



## Hardware References

---

- [Serial Interface, on page 1](#)
- [Ethernet Interfaces \(NICs\), on page 1](#)
- [Allocating a Virtual NIC to a Physical NIC Interface, on page 1](#)

### Serial Interface

A VM Expressway has no physical serial interface; the serial interface is accessible through the console tab of the VM guest.

You can use CTRL+ALT to exit from the Console window (this is identified in the bottom right corner of the vSphereClient window).

### Ethernet Interfaces (NICs)

In VM Expressway the LAN interfaces are Virtual NICs. Appropriate drivers are set up as VM Expressway is installed; configuration of IP addresses is carried out through the standard Expressway interface.

VM Expressway allocates 3 virtual NICs:

- the first is used for the standard LAN 1 interface
- the second is used if Dual Network interfaces is enabled (LAN 2)
- the third is reserved for future use

### Allocating a Virtual NIC to a Physical NIC Interface

Virtual NICs can be assigned to physical interfaces as follows:

---

- Step 1** Ensure that the physical NIC on the VM host is connected and operational.
- Step 2** Set up or check that there are Virtual Switches (vNetwork Distributed Switches) for each physical NIC. (Select the host on which the VM Expressway will run, select the **Configuration** tab and select **Networking**.)
- Step 3** Ensure that there is at least one Virtual Machine Port Group (with associated VLAN IDs) set up for each physical NIC.

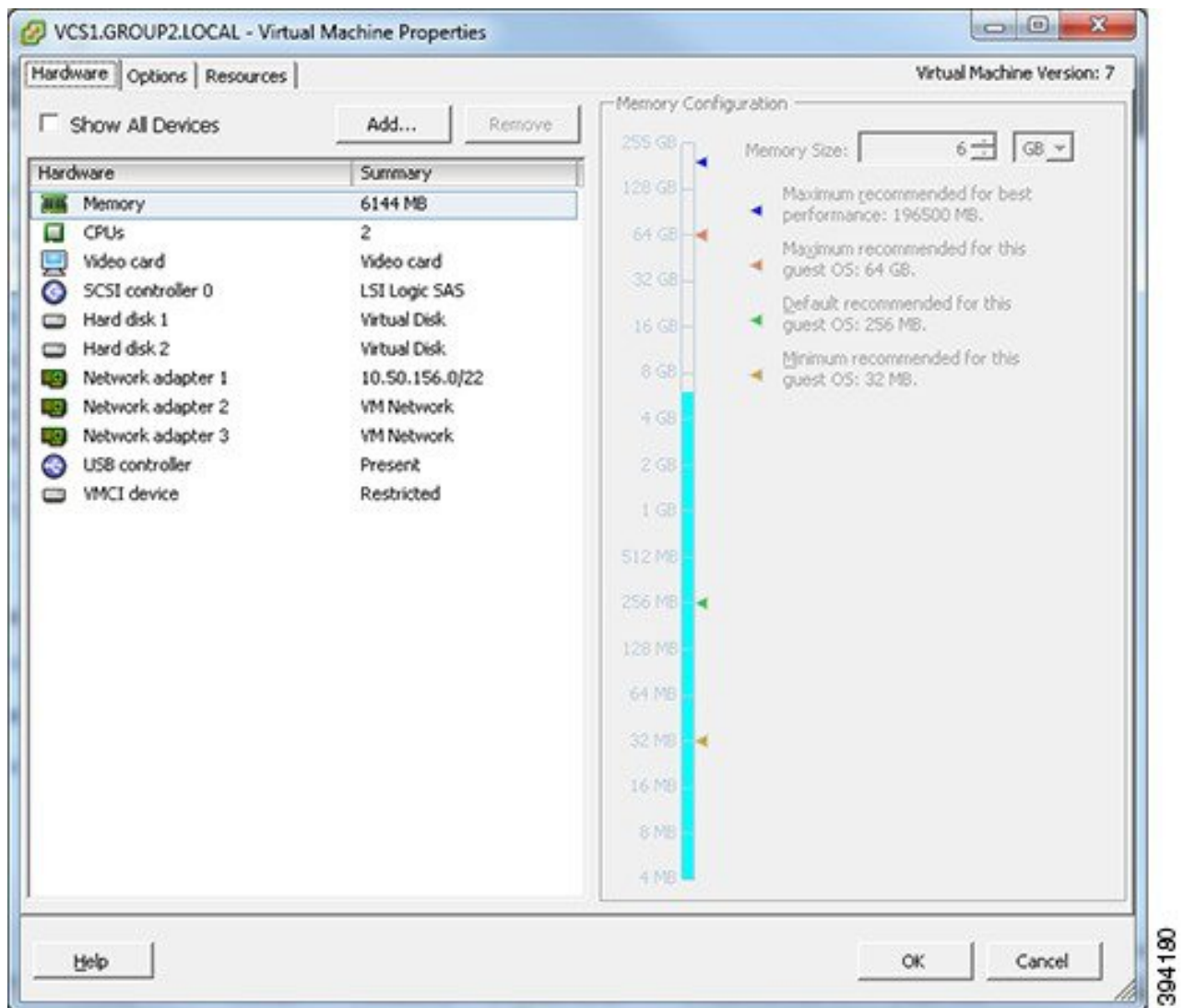
## Allocating a Virtual NIC to a Physical NIC Interface

- a) To add a new Virtual Machine Port Group, click **Properties** on the appropriate Virtual Switch or vNetwork Distributed Switch.
- b) Follow the network wizard.

**Step 4** Note the name of a Virtual Machine Port Group connecting to the required NIC.

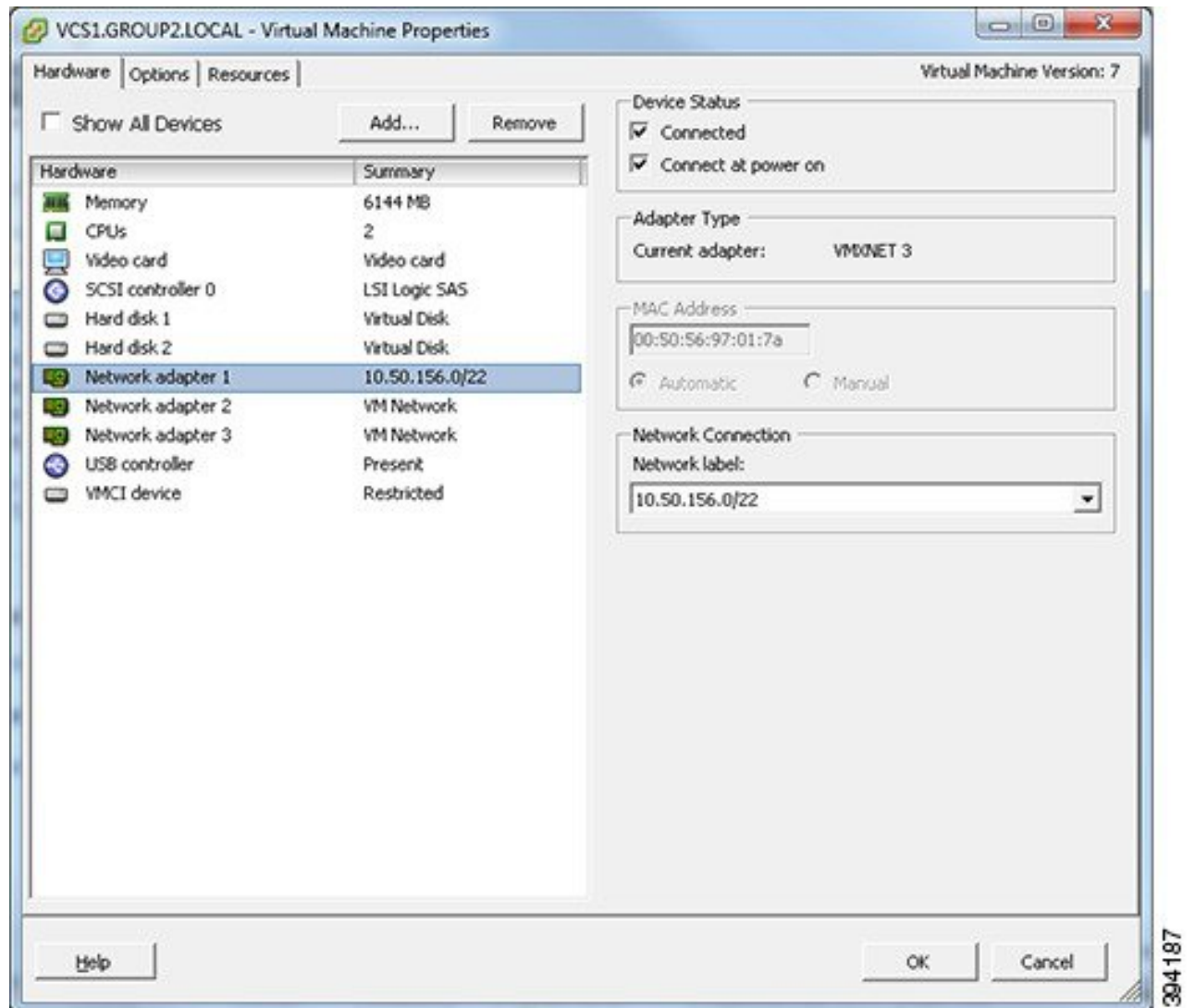
**Step 5** Select the VM guest; right click it and select **Edit settings...**

*Figure 1: Edit Settings*



**Step 6** Select the required network adaptor (Network adaptor 1 = LAN 1, Network adaptor 2 = LAN 2).

Figure 2: Select Network Adaptor



**Step 7** Select the appropriate Network label (Virtual Machine Port Group) to associate the Expressway LAN interface with the required physical NIC.

**Step 8** After a few seconds the Expressway will be able to communicate over the physical interface.

