

# WAP121和WAP321接入點上的安裝嚮導配置

## 目標

安裝嚮導是一個內建功能，用於幫助WAP裝置的初始配置。安裝嚮導使配置設定非常簡單。安裝嚮導的逐步過程將引導您完成運行WAP裝置所需的所有基本設定。

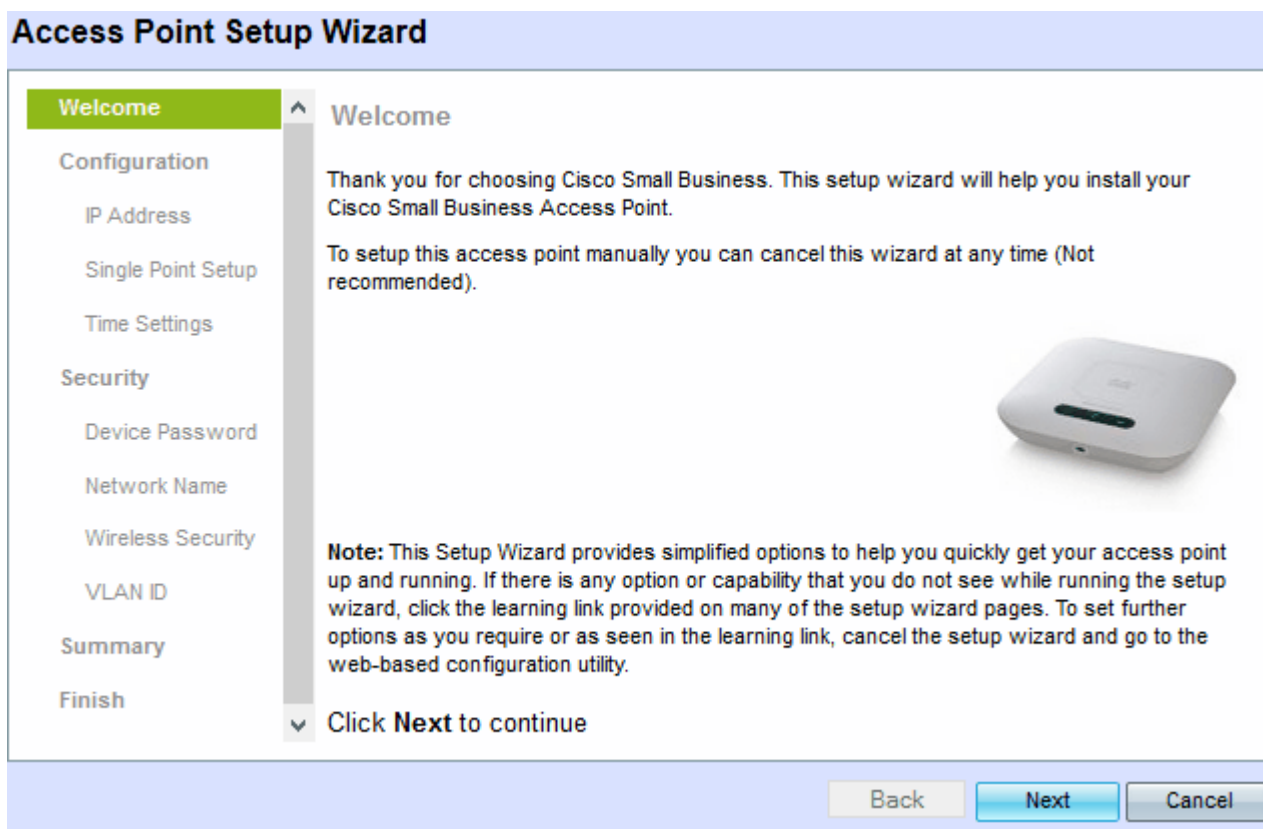
本文說明如何使用安裝嚮導配置WAP121和WAP321裝置。

## 適用裝置 | 韌體版本

- WAP121 | 1.0.3.4(下載[最新版](#))
- WAP321 | 1.0.3.4(下載[最新版](#))

## 安裝嚮導

步驟1.登入到Access Point Configuration Utility，然後選擇Run Setup Wizard。出現「Access Point Setup Wizard」視窗：



步驟2.按一下下一步繼續。出現Configure Device - IP Address 視窗。

## Access Point Setup Wizard

**Welcome**

**Configuration**

- IP Address
- Single Point Setup
- Time Settings

**Security**

- Device Password
- Network Name
- Wireless Security
- VLAN ID

**Summary**

**Finish**

### Configure Device - IP Address

Select either Dynamic or Static IP address for your device.

Dynamic IP Address (DHCP) (Recommended)

Static IP Address

Static IP Address:  .  .  .

Subnet Mask:  .  .  .

Default Gateway:  .  .  .

DNS:  .  .  .

Secondary DNS (optional):  .  .  .

[? Learn more about the different connection types](#)

Click **Next** to continue

Back Next Cancel

步驟3.點選與要用於確定WAP IP地址的方法對應的單選按鈕。

- 動態IP地址(DHCP) (推薦) — WAP的IP地址由DCHP伺服器分配。
- 靜態IP地址 — 允許您為WAP建立固定 (靜態) IP地址。靜態IP地址不變。

附註：如果按一下了動態IP地址，請跳至步驟9。

## Access Point Setup Wizard

**Welcome**

**Configuration**

- IP Address
- Single Point Setup
- Time Settings

**Security**

- Device Password
- Network Name
- Wireless Security
- VLAN ID

**Summary**

**Finish**

### Configure Device - IP Address

Select either Dynamic or Static IP address for your device.

Dynamic IP Address (DHCP) (Recommended)

Static IP Address

Static IP Address:  .  .  .

Subnet Mask:  .  .  .

Default Gateway:  .  .  .

DNS:  .  .  .

Secondary DNS (optional):  .  .  .

[? Learn more about the different connection types](#)

Click **Next** to continue

Back Next Cancel

步驟4.在Static IP Address欄位中輸入WAP的IP地址。此IP地址由您建立，不應由網路中的其他裝置使用。

步驟5.在Subnet Mask欄位中輸入IP地址的子網掩碼。

步驟6.在Default Gateway欄位中輸入WAP的預設網關的IP地址。預設網關通常是分配給路由器的專用IP地址。

步驟7. (可選) 如果要訪問網路外的網頁，請在DNS欄位中輸入主域名系統(DNS)的IP地址，DNS伺服器的IP地址應由您的網際網路服務提供商(ISP)提供。

步驟8. (可選) 在輔助DNS欄位中，輸入輔助DNS的IP地址。

步驟9.按一下**Next**。出現「Single Point Setup - Set A Cluster」視窗。

**Access Point Setup Wizard**

**Single Point Setup -- Set A Cluster**

A cluster provides a single point of administration and lets you view, deploy, configure, and secure the wireless network as a single entity, rather than as a series of separate wireless devices.

Create a New Cluster  
Recommended for a new deployment environment.  
New Cluster Name:   
AP Location:

Join an Existing Cluster  
Recommended for adding new wireless access points to the existing deployment environment.  
Existing Cluster Name:   
AP Location:

Do not Enable Single Point Setup  
Recommended for single device deployments or if you prefer to configure each device individually.

Click **Next** to continue

Back Next Cancel

步驟10.按一下您要使用的單選按鈕。選項包括：

- 建立新集群 — 用於建立新集群以將無線網路作為一個實體進行保護。
  - 新群集名稱 — 在新群集名稱欄位中輸入群集的名稱。
  - AP位置 — 在「AP位置」欄位中輸入AP的位置。
- 加入現有群集 — 用於將新裝置新增到現有群集。
  - 現有群集名稱 — 在「現有群集名稱」欄位中輸入已建立的群集的名稱。
  - AP位置 — 在「AP位置」欄位中輸入AP的位置。
- 不啟用單點設定 — 用於禁用集群設定並單獨配置所有裝置。

步驟11.按一下**Next**繼續。出現 *Configure Device - Set System Date And Time* 視窗。

## Access Point Setup Wizard

**Welcome**

**Configuration**

- ✓ IP Address
- ✓ Single Point Setup

**Time Settings**

**Security**

- Device Password
- Network Name
- Wireless Security
- VLAN ID

**Summary**

**Finish**

**Configure Device - Set System Date And Time**

Enter the time zone, date and time.

Time Zone: USA (Pacific)

Set System Time:  Network Time Protocol (NTP)  
 Manually

NTP Server: 0. .pool.ntp.org

[? Learn more about time settings](#)

Click **Next** to continue

Back Next Cancel

步驟12.從Time Zone下拉選單中選擇時區。

步驟13.點選與您要用於設定WAP時間的方法對應的單選按鈕。

- 網路時間協定(NTP)- WAP從NTP伺服器獲取時間。
- 手動 — 時間手動輸入到WAP中。

**附註：**如果按一下「Manually (手動)」，請跳至步驟15。

步驟14.在「NTP伺服器」欄位中輸入提供日期和時間的NTP伺服器的域名。

## Access Point Setup Wizard

**Welcome**

**Configuration**

- ✓ IP Address
- ✓ Single Point Setup
- Time Settings**

**Security**

- Device Password
- Network Name
- Wireless Security
- VLAN ID

**Summary**

**Finish**

### Configure Device - Set System Date And Time

Enter the time zone, date and time.

Time Zone:

Set System Time:  Network Time Protocol (NTP)  
 Manually

System Date:

System Time:  :

[? Learn more about time settings](#)

Click **Next** to continue

步驟15.如果選擇「人工」，則從「系統日期」下拉選單中，分別選擇年、月和日。

步驟16.如果選擇「手動」，則從「系統時間」下拉選單中選擇小時和分鐘。

步驟17.按一下「Next」。出現 *Enable Security - Set Password* 視窗。

## Access Point Setup Wizard

**Welcome**

**Configuration**

- ✓ IP Address
- ✓ Single Point Setup
- ✓ Time Settings
- Security**

**Device Password**

- Network Name
- Wireless Security
- VLAN ID

**Summary**

**Finish**

### Enable Security - Set Password

The administrative password protects your access point from unauthorized access. For security reasons, you should change the access point password from its default settings. Please write this password down for future reference.

Enter a new device password:

New password needs at least 8 characters composed of lower and upper case letters as well as numbers/symbols by default.

New Password:

Confirm Password:

Password Strength Meter:  Below Minimum

Password Complexity:  Enable

[? Learn more about passwords](#)

Click **Next** to continue

步驟18.在New Password欄位中輸入在WAP上進行管理訪問所需的新密碼。

步驟19.在Confirm Password欄位中重新輸入相同的密碼。

「密碼強度計」欄位顯示輸入密碼時變化的豎線。可用選項包括：

- 紅色 — 不符合最低密碼複雜性要求。
- 橙色 — 滿足最低密碼複雜性要求，但密碼強度較弱。
- 綠色 — 滿足最低密碼複雜性要求，並且密碼強度很強。

步驟20。(可選)要啟用密碼複雜性，請選中**Enable** 覈取方塊。這要求密碼長度至少為8個字元，並且由大寫字母和數字/符號組成。

步驟21.按一下**Next**繼續。出現*Enable Security - Name Your Wireless Network* 視窗。

**Access Point Setup Wizard**

**Welcome**

**Configuration**

- ✓ IP Address
- ✓ Single Point Setup
- ✓ Time Settings

**Security**

- ✓ Device Password

**Network Name**

Wireless Security

VLAN ID

Summary

Finish

**Enable Security - Name Your Wireless Network**

The name of your wireless network, known as an SSID, identifies your network so that wireless devices can find it.

Enter a name for your wireless network:

Network Name (SSID):

For example: MyNetwork

[? Learn more about network names](#)

Click **Next** to continue

Back Next Cancel

步驟22.在Network Name(SSID)欄位中輸入無線網路的服務集識別符號(SSID)。SSID是無線區域網的名稱。

步驟23.按一下「**Next**」。出現*Enable Security - Secure Your Wireless Network* 視窗。

### Access Point Setup Wizard

**Welcome**

**Configuration**

- ✓ IP Address
- ✓ Single Point Setup
- ✓ Time Settings

**Security**

- ✓ Device Password
- ✓ Network Name
- Wireless Security**
- VLAN ID

**Summary**

**Finish**

#### Enable Security - Secure Your Wireless Network

Select your network security strength.

**Best Security (WPA2 Personal - AES)**  
Recommended for new wireless computers and devices that support this option.  
Older wireless devices might not support this option.

**Better Security (WPA Personal - TKIP/AES)**  
Recommended for older wireless computers and devices that might not support WPA2.

**No Security (Not recommended)**

Enter a security key with 8-63 characters.

Below Minimum

Show Key as Clear Text

[? Learn more about your network security options](#)

Click **Next** to continue

步驟24.點選與要應用於無線網路的網路安全對應的單選按鈕。

- 最佳安全性 ( WPA2個人 — AES ) — 提供最佳安全性，如果您的無線裝置支援此選項，建議使用此選項。WPA2個人版在客戶端之間使用高級加密標準(AES)和預共用金鑰(PSK)。它為每個會話使用新的加密金鑰，因此難以破解。
- 更好的安全性(WPA Personal - TKIP/AES) — 當存在不支援WPA2的較舊無線裝置時提供安全性。WPA Personal使用高級加密標準(AES)和臨時金鑰完整性協定(TKIP)。它採用IEEE 802.11i Wi-Fi標準。
- 無安全性 ( 不推薦 ) — 無線網路不需要密碼，任何人都可以訪問。

**附註：**如果按一下「No Security ( 無安全性 )」，請跳至步驟27。

步驟25.在「安全金鑰」欄位中輸入網路的密碼。緊挨著的強度表顯示輸入的密碼的強度。更強的密碼可提供高安全性。

步驟26。( 可選 ) 要在鍵入時檢視密碼，請選中**Show Key as Clear Text**覈取方塊。

步驟27.按一下「**Next**」。出現*Enable Security - Assign The VLAN ID For Your Wireless Network*視窗。

## Access Point Setup Wizard

**Welcome**

**Configuration**

- ✓ IP Address
- ✓ Single Point Setup
- ✓ Time Settings

**Security**

- ✓ Device Password
- ✓ Network Name
- ✓ Wireless Security

**VLAN ID**

**Summary**

**Finish**

### Enable Security - Assign The VLAN ID For Your Wireless Network

By default, the VLAN ID assigned to the management interface for your access point is 1, which is also the default untagged VLAN ID. If the management VLAN ID is the same as the VLAN ID assigned to your wireless network, then the wireless clients associated with this specific wireless network can administer this device. If needed, an access control list (ACL) can be created to disable administration from wireless clients.

Enter a VLAN ID for your wireless network:

VLAN ID:  (Range: 1 - 4094)

[Learn more about vlan ids](#)

Click **Next** to continue

Back Next Cancel

步驟28. 在VLAN ID欄位中輸入網路的VLAN ID。如果管理VLAN與分配給無線網路的VLAN相同，則您可以管理裝置。您也可以使用存取控制清單(ACL)來停用無線使用者端的管理。

步驟29. 按一下「Next」。出現「Summary - Confirm Your Settings」視窗。

## Access Point Setup Wizard

**Welcome**

**Configuration**

- ✓ IP Address
- ✓ Single Point Setup
- ✓ Time Settings

**Security**

- ✓ Device Password
- ✓ Network Name
- ✓ Wireless Security
- ✓ VLAN ID

**Summary**

**Finish**

### Summary - Confirm Your Settings

Please review the following settings and ensure the data is correct.

Network Name (SSID):	networkname
Network Security Type:	WPA2 Personal - AES
Security Key:	*****
VLAN ID:	45

Note: The AP Radio will be enabled after clicking Submit.

Click **Submit** to enable settings on your Cisco Small Business Access Point

Back Submit Cancel

步驟30. (可選) 如果要編輯所做的設定，請按一下上一步。

步驟31. (可選) 如果要退出安裝嚮導並撤消所做的所有更改，請按一下取消。

步驟32. 檢查網路設定。按一下Submit以啟用WAP上的設定。當WAP啟用您的設定時，將出現一個



載入欄。WAP完成後，將出現*Device Setup Complete*視窗。


### Access Point Setup Wizard

- Welcome
- Configuration
  - ✓ IP Address
  - ✓ Single Point Setup
  - ✓ Time Settings
- Security
  - ✓ Device Password
  - ✓ Network Name
  - ✓ Wireless Security
  - ✓ VLAN ID
- Summary
- Finish**

#### Device Setup Complete

✓ Congratulations, your access point has been set up successfully. We strongly recommend that you save these settings by writing them down or by copying and pasting them into a text document. You will need these settings later when you add other wireless computers or devices to your network.

Cluster Name:	New
Network Name (SSID):	networkname
Network Security Type:	WPA2 Personal - AES
Security Key:	*****



Note: To configure WPS, Click "Run WPS" on the Getting Started page, under Initial Setup.

Click **Finish** to close this wizard.

Back Finish Cancel

步驟33.按一下**完成**退出安裝嚮導。