

思科企業移動應用的零日配置

目標

本文檔旨在向您展示如何配置思科企業移動應用的零日設定。

適用軟體 | 版本

- 思科商務行動應用程式 | 1.0.24([指向Apple App Store的連結](#))

簡介

思科企業移動應用使客戶能夠部署和管理受支援的思科企業裝置。該移動應用旨在幫助客戶設定其交換機和無線網路，並從單一設定點管理其基礎設施。

零日配置將引導您使用移動應用完成裝置的初始配置。

關於思科商務移動應用，您應該熟悉的一些術語：

- Greenfield Network — 尚未配置的新網路
- Brownfield Network — 已配置的現有網路
- 第0天 — 初始配置
- 第2天 — 更改或更新現有配置

目前，移動應用僅支援綠地網路部署。不會發現或管理具有現有配置的裝置。

如果你已準備好使用移動應用進行配置，讓我們開始設定！

思科企業移動應用的系統要求

運行iOS 13.0及更高版本的Apple iOS裝置支援思科企業移動應用。

以下思科業務裝置可由思科業務移動應用管理：

- 思科商務220系列智慧型交換器
- 思科商務250系列智慧型交換器
- 思科商務350系列託管交換器
- 思科商務100系列存取點
- 思科商務100系列網狀延伸器
- 思科商務200系列存取點

目錄

- [思科企業移動應用的配置](#)
- [新增站點](#)
- [站點配置](#)
- [新增裝置](#)

思科企業移動應用的配置

新增站點

目前只有運行iOS 13.0及更高版本的Apple iOS裝置支援思科企業移動應用。

步驟1

從Apple裝置 (iPhone或iPad) 上的應用商店下載思科商務移動應用。

該應用已針對iPhone上的顯示進行了最佳化。如果你使用iPad，你會看到應用側面有黑色條紋，因為iPad的長寬比不同。

步驟2

點選思科企業移動應用。



步驟3

要建立網路位置，請按一下**+新增站點**。

All Sites

+ Add Site



Create Your First Site

A site is a physical location you are going to deploy your network in. You can see all your sites here.



All Sites



Help



More

步驟4

按一下**Get Started**。

< All Sites

Add Site



Add Site

Name and physically locate the site that will contain the devices you are about to configure.

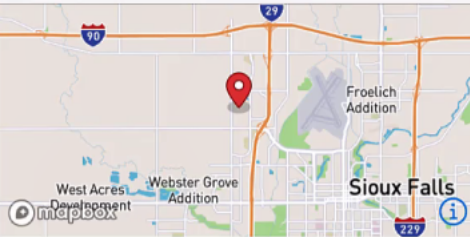
Get Started

Don't show this to me again

步驟5

配置站點名稱、地址、國家/地區，然後按一下下一步。

[← Add Site](#) **Add Site**



What do you want to name your site? **1**

Lab

Ex: San Jose or Central Station

What is the full address? **2**

N Vincent Ave, Sioux Falls, SD, United States

Ex: 123 Main St, Newark, NJ 02341

Country **3**

United States ▼

4

Next

步驟6

輸入站點的使用者名稱和密碼，然後按一下下一步。

[← Add Site](#) **Add Site**

Site Credentials

Create a username and password for this site.
These credentials will be used to access all devices added to this site

Username

admin **1**

Password

Enter password **2**

Confirm Password

Enter password again **3**

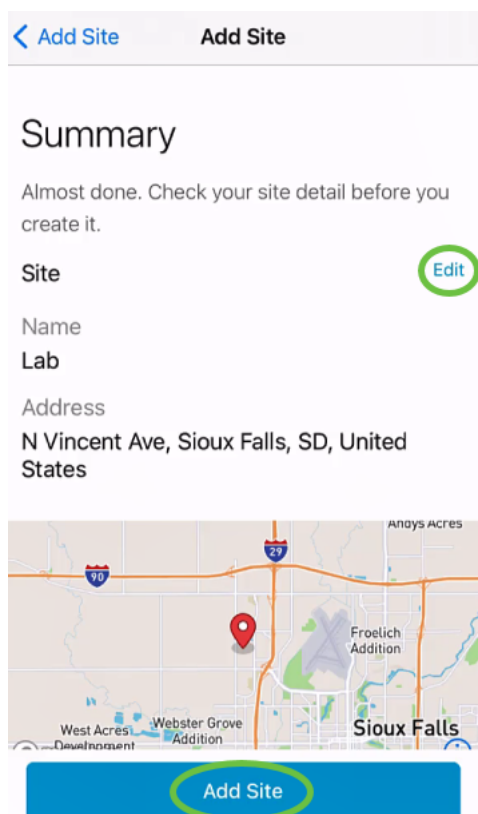
4

Next

憑據將用於訪問此站點上的裝置。

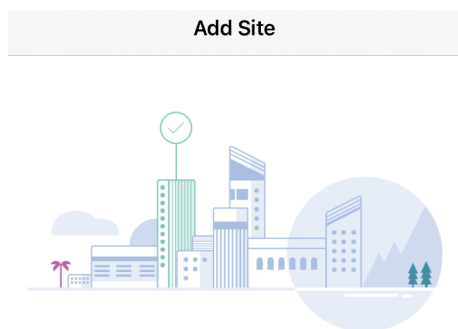
第7步

您將看到 *Summary* 螢幕。要進行更改，請按一下 *編輯*。如果您已設定，請按一下 *Add Site*。



步驟8

按一下「完成」。

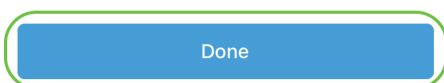


Done! The site "Lab" has been created

You will be able to use this site to manage your network, all networking hardware and guest devices.

Here's what you should do Next?

[Configure the Network for this Site](#)



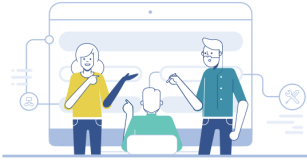
站點配置

要配置站點，請執行以下步驟：

步驟1

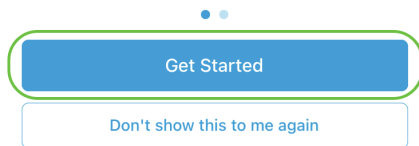
按一下**Get Started**。

[< Add Site](#) Site Configuration



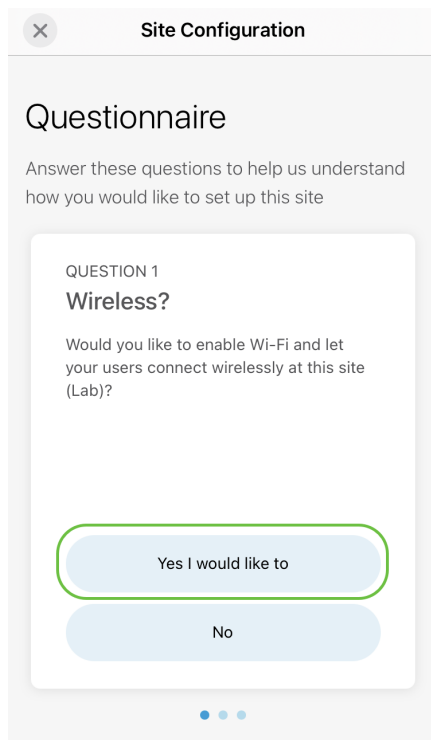
Tell us about your Site

Answer some questions about your preferences on how you would like to configure your site - Segmentation, Wireless preferences, advanced configuration etc.



步驟2

選擇一個選項以配置網路中的無線設定。在本例中，選擇「是」。



步驟3

如果有多個網路，您可以選擇配置它們。在此示例中，選擇了「Just 1 is fine」(僅1為有效)。

The screenshot shows a mobile application interface titled "Site Configuration" with a close button (X) in the top left. Below the title is a "Questionnaire" section with the instruction: "Answer these questions to help us understand how you would like to set up this site". The main question is "Multiple Networks?". Below the question, it asks "Would you like to create multiple Networks at this site (Lab)?". A sub-note states: "Some business create multiple networks for different departments or based on who is going to using them." Two examples are provided: "Example 1: Internal, Guest" and "Example 2: IT, Finance, Business". There is a checkbox labeled "Create separate Wi-Fi for each network" which is currently unchecked. At the bottom of the question card, there are two buttons: "Yes I would like to" and "Just 1 is fine". The "Just 1 is fine" button is highlighted with a green border. Below the question card are three blue dots, with the first one being filled, indicating the current step in the questionnaire.

步驟4

您可以手動或自動配置高級設定。在此示例中，**Do it automatically**處於選中狀態。按一下「**Continue**」（繼續）。

The screenshot shows the next step in the "Site Configuration" questionnaire. The title "Questionnaire" is followed by the same instruction: "Answer these questions to help us understand how you would like to set up this site". The question is "QUESTION 3 Advanced Settings". It asks: "Would you like to do the advanced configuration on your own or have us do them for you automatically?". A sub-note explains: "Advanced configuration lets you configure DNS, NTP and DHCP Server settings." There are two buttons: "I will do them on my own" and "Do it automatically". The "Do it automatically" button is highlighted with a green border and has a green circle with the number "1" next to it. Below the question card, there is a blue button labeled "Continue" with a green circle and the number "2" next to it, indicating the next step.

步驟5

輸入**Network Name**並按一下**Next**。

Networks

Name the network at Lab. You can also add multiple networks if you like

+ Add a network

▼ Lab

Network Name

Lab 1

Network ID

1

2

Next

如果要新增更多網路，請按一下+新增網路。

步驟6

輸入網路的密碼，然後按一下下一步。

▼ Lab

WiFi Network Name

Lab

Associated Wired Network Name

Lab ▼

Radio Frequency

2.4 GHz 5 GHz

Type

Employee

Authentication

WPA2 Personal ▼

Password 1

Re-enter Password 2

3

Next

第7步

按一下下一步繼續。

Wireless

Choose the Management WiFi Network at Lab.

We need to know which WiFi Network you would like us to use to perform maintenance actions and network configuration changes.

Management WiFi
Lab

The Management Wi-Fi is usually the one which is the most secure and is only used by known users within your organization. (Can only be Employee type with network ID 1 and the authentication cannot be Open)

Next

步驟8

檢查 *Summary* 螢幕中的詳細資訊。按一下 **Confirm Site Configurations** 按鈕完成設定。

Summary

Almost done. Check your Site detail before you create it.

Network Segmentation [Edit](#)

NETWORK 1

Network Name	Lab
Network ID	1

Wireless [Edit](#)

WIRELESS 1 M

SSID	Lab
2.4 GHz	enable
5 GHz	enable

Guest Network No

Confirm Site Configurations

步驟9

按一下「完成」。



Done! The site configurations for "Lab" has been created

You can edit your configurations later if needed from the sites homepage

Here's what you should do Next?

[Add Devices to this Site](#)

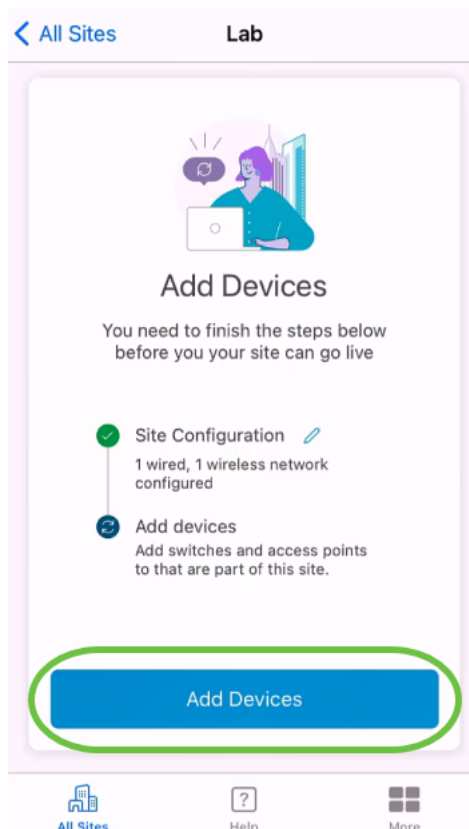
Done

新增裝置

要新增裝置，請執行以下步驟：

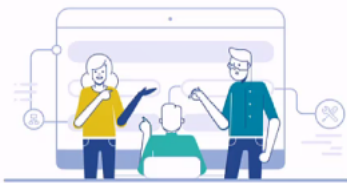
步驟1

按一下Add Devices。



步驟2

按一下Get Started。



Connect your devices

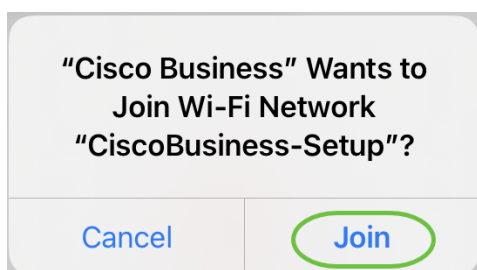
Before we proceed, please make sure that all the devices you want to add to Lab have been plugged in.

Get Started

Don't show this to me again

步驟3

按一下**Join**以加入預設的 *CiscoBusiness-Setup* SSID。



確保無線接入點已完全啟動，並且處於出廠預設設定。

步驟4

檢測到連線後，按一下**Done**。

< Back

Connect Result

Setting Up for the first time?

Before we begin lets get you connected to the setup wireless network.



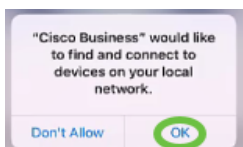
Network Available

The **CiscoBusiness-Setup** WiFi network was detected and we are ready to connect.

Done

步驟5

按一下「OK」，允許思科企業網路尋找並連線到思科企業裝置。



步驟6

將檢測到接入點。在本示例中，它是Cisco Business Wireless 145AC接入點。按一下「Add Cisco Business Wireless 145AC」。

Found a new device

We automatically discovered a new device via the CiscoBusiness-Setup wireless network.



Cisco Business Wireless 145AC

Type: Access Point

Should we go ahead and add this device to your network?

Add Cisco Business Wireless 145AC

Cancel

第7步

將顯示裝置和設定的摘要。按一下**Confirm Add Device**。

Summary

Almost done. Make sure you check the device and the settings to be applied to it.

▼ Devices To Be Added

Model Cisco Business Wireless 145AC

▼ Site Settings to be applied

The following settings will be applied to the device.

View Site Settings



Confirm Add Device

Cancel

螢幕上將顯示一個螢幕，顯示新增裝置的進度。

Adding Device

Adding Device

About 9 minutes remaining

Cisco Business Wireless 145AC

Type: Access Point

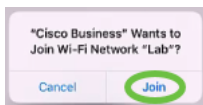


Initializing device... 3%

⚠ Adding device. Do not quit or minimize the app till it's done

步驟8

按一下**Join**以允許接入點加入您建立的網路。



步驟9

您將看到裝置已成功部署的螢幕。您可以選擇*Add more devices*或按一下*Done*。在此示例中，選擇了**Done**。

✕ Adding Device

Device deployed



Cisco Business Wireless 145AC
Type: Access Point
Serial No: FGL2418L85F

✓ Cisco Business Wireless 145AC has been successfully setup is broadcasting WiFi network.

The access point is now live and added to Lab.
We can now use it to add and discover other devices to your network.


Add more devices

Done

步驟10

按一下**Done**繼續。

Add Devices



Done! Your Device has been Deployed.

AP6C71.0D54.064C has been added to your Lab site.

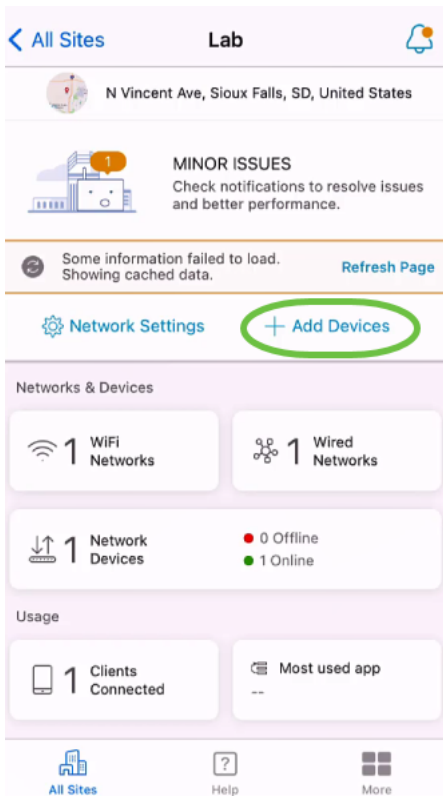
What's Next?

[Add other Devices](#)

Done

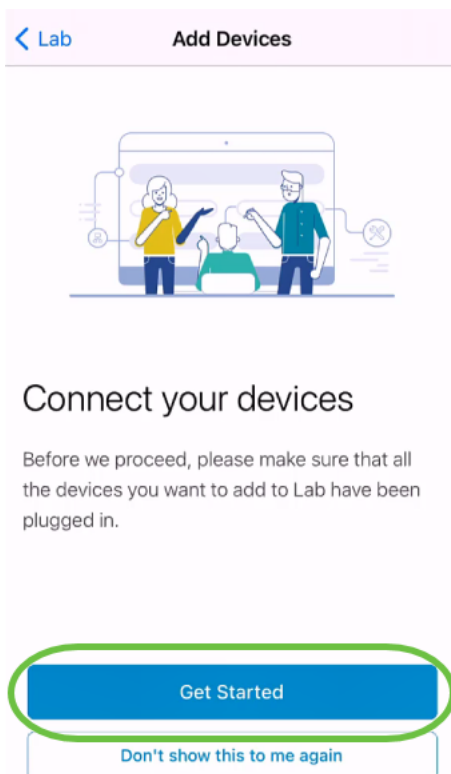
步驟11

您將導覽至首頁。如果要新增更多裝置，請按一下+ **Add Devices**。



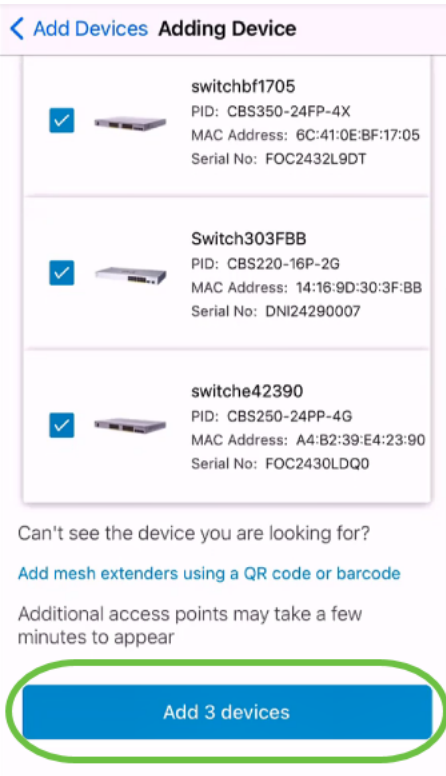
步驟12

選擇Get Started選項。



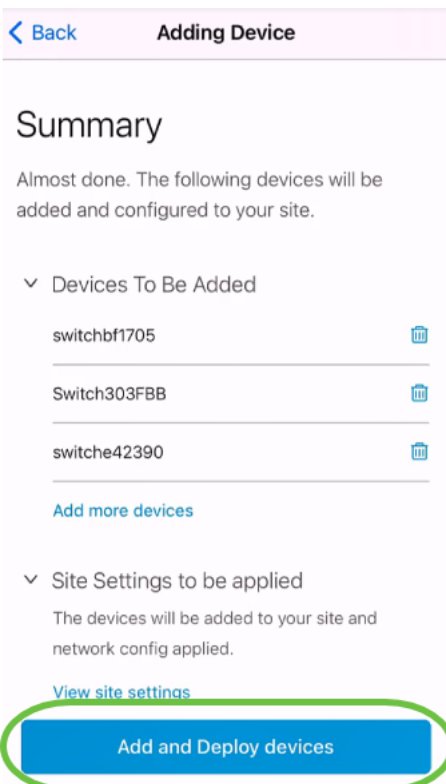
步驟13

將顯示檢測到的裝置。在此範例中，偵測到三個裝置。按一下Add 3 devices按鈕。



步驟14

將會顯示要新增的裝置的摘要。按一下**Add and Deploy devices**。






將配置和新增裝置。

Adding Device

Adding Devices

About 20 seconds remaining

 switchbf1705 Serial No. FOC2432L9DT	100%
✓ Device Added	
 Switch303FBB Serial No. DNI24290007	43%
Enabling Trunk Vlans...	
 switche42390 Serial No. FOC2430LDQ0	100%
✓ Device Added	




Adding devices. Do not quit or minimize the app till it's done

將在裝置上執行零天初始配置。在此過程中請勿關閉應用。

步驟15

按一下「完成」。

Add Devices



Done! Your Devices have been Deployed.

Good news! You've successfully deployed your devices.

What's Next?

[See list of added devices](#)

Done

結論

你拿到了！現在，您已成功配置思科企業移動應用的零日設定。現在，您可以輕鬆管理您的網路。

現在，您知道從何處獲取更多資訊或提供反饋！

是否想瞭解有關思科企業移動應用的更多文章？別看了！按一下以下任意標籤以直接進入該主題。好好享受！

[概觀](#) [疑難排解](#) [裝置管理](#) [幫助頁面](#) [升級韌體](#) [重新啟動裝置](#) [調試日誌](#)