

åæ¨å...æœ%0CUCMçš,,IPé»»è©±ä,Šé...ç½®LSC

ç»®éœ,,

[ç°jää»](#)

[åj...è!æçä»¶](#)

[éœœæ±,](#)

[æžç””å...fä»¶](#)

[èfœæ™-è³†è”š](#)

[MICè^†LSC](#)

[è”å@š](#)

[ç¶²è-æ<“æ”²](#)

[é©—è%0](#)

[ç-‘é>æž’èšf](#)

[æ²’æœ%0æœ%0æ^çš,,CAPFä¼°æœæ”å™”](#)

[LSC¼šéœœçššâ±æ—](#)

[LSC¼šâ±æ—](#)

[LSC¼šæ“ä½œæž”èµ:](#)

[ç>é—œè³†è”š](#)

ç°jää»

æœ-æ-†è^{aa}æžâ!,ä¼°åœ”Cisco Internet Protocolé»»è©±¼^Cisco
IPé»»è©±¼%0ä,Šâ®%0èfæœ-åœ°æœ%0æ^è%0æ>(LSC)ãœ,

åj...è!æçä»¶

éœœæ±,

æœçš’å»è°æ,,çžèšfä»¥ä,ä,»éjœi¼š

- Cisco Unified Communications Manager(CUCM)é>†ç¾¼åâ®%0å...”æ”jå¼éé,é ...
- X.509æ†’è%0
- èf½éœ å®%0èšè%0æ>(MIC)
- LSC
- è%0æ>ç”ç™¼æ©ÿæš<ä>æç†åšÿèf½(CAPF)è%0æ>æ”ä½œ
- éè”å®%0å...”æœš(SBD)
- å^åš<äjää»æ>...å-®(ITL)æ”æj^

æžç””å...fä»¶

æœ-æ-†æ””å,çš,,è³†è”šäÿ°æ-¼æ”-æ”SBDçš,,CUCMç%0^æœ-i¼œå³CUCM
8.0(1)åššæ’è«ç%0^æœ-ãœ,

Listi¼CEç,,¶ã¾CEé◆èjCEãŠYèf½á ±á'Si¼šé ◆è"á®%á... æ€šã€,

ææ¬æ¬ã,çš,,è³è"Šæ¬æ ¹æ"šç%áá®šá¬lé©—á®çç'°áçfá...šçš,,èf◆ç½®æ%á»°ç««ã€,æ¬ã,ä½ç" á^°çš,,æ

èfCEæ™-è³è"Š

MICè^LSC

á!,æžææ,"á°◆802.1Xæ^—Anyconnecté»è©±VPNä½ç" áY°æ¬¼è%áæ,çš,,è°«ä»½é©—è%oi¼CEçžèš£MIC

æ¬◆éf"æ€◆çš'é»è©±á†°á» æ™,éf½é ◆èf◆ä°†MICã€,æææ†'è%ç"±á...¶ä,ä,€ã€<Ciscoèf½é€ CAæ†'è
SHA2ã€◆CAP-RTP-001æ^—CAP-RTP-

002æ†'è%ã€,ç•¶lé»è©±æ◆◆ä¾¼ææè%áæ,æ™,i¼CEæœfè%áæ~žá®fæ¬æœ%áæ^çš,,æ€◆çš'é»è©±

á◆|ä,€æ¬1é◆ç¼CELSCç"±ç®jç◆†á"jæœ%áæ,,á®%èf◆áœ"é»è©±ä,Ši¼CEä,|ç"±CUCMç™¼ä½^è€.
VPNé...◆ç½®ç,°áf...äj;ä»»ç"±á²çY¥CAPFè%áæ,é'ç™¼æ©Yæš<é'ç™¼çš,,LSCã€,áY°æ¬¼LSCè€CEä,◆æ¬

è"á®š

ç¶²è¬æ<"æ'²

ææ¬æ¬ãæ"á½çç"á°†ä»¶ä, <CUCMá¬lé©—á¼°æœ◆á™"i¼š

- ao115pub - 10.122.138.102 - CUCM Publisherá'ETFTPä¼°æœ◆á™"
- ao115sub - 10.122.138.103 - CUCMä½çç"è€...á'ETFTPä¼°æœ◆á™"

çç°èª◆CAPFè%áæ,á°šæœªé◆žæœYi¼CEä,|ä,"áœ"èç'æœYá...šä,◆æœfé◆žæœYã€,á°žè|½è†³Cisco
Unified OS Administration > Security > Certificate Managementi¼CEç,,¶ã¾CEá°žè½èè³Find
Certificate Listi¼CEá...¶ä,Certificateæ£á¥½æ¬CAPFi¼CEá!,ä, <áœ¬æ%œçç°ã€,

Certificate List

https://10.122.138.102/cmplatform/certificateFindList.do

Cisco Unified Operating System Administration
For Cisco Unified Communications Solutions

administrator

Show Settings Security Software Upgrades Services Help

Certificate List

Generate Self-signed Upload Certificate/Certificate chain Generate CSR

Status

1 records found

Certificate List (1 - 1 of 1)

Find Certificate List where Certificate is exactly CAPF Find Clear Filter + -

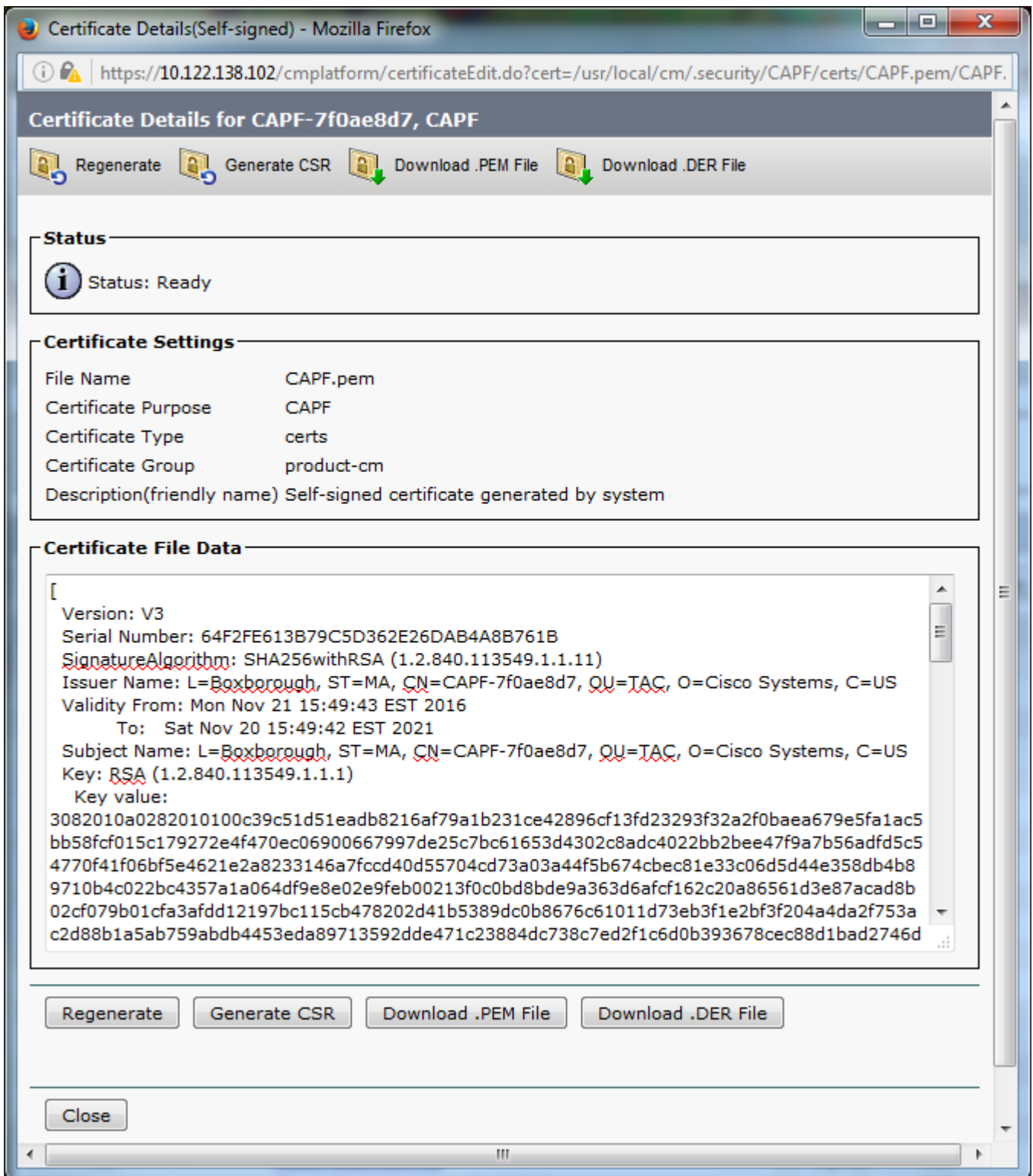
Certificate	Common Name	Type	Key Type	Distribution	Issued By	Expiration	
CAPF	CAPF-7f0ae8d7	Self-signed	RSA	ao115pub	CAPF-7f0ae8d7	11/20/2021	Self-sign

Generate Self-signed Upload Certificate/Certificate chain Generate CSR

æE%ä, €ä, &ã€€Common Nameã€ä»¥é-ã•ÿã€€Certificate

Detailsã€é€ é€ çã€, æªçæÿ¥Certificate File Dataçª—æ ¼ä, çš,, Validity

From¼šâ'€To¼šæ—¥æœÿi¼€ä»¥ççª@šè%œ», ä^œÿæÿæ™, é-¼€ä, ä, <ãœ-æ%œçªã€,



å!,æžœCAPFè%œ,å.²éŽæœÿæ^-å³å°†éŽæœÿi¼CEè««é†æ-°ç"ÿæ^è©²è%œ,ã€,è««å¿½¿ç""å
åCEæ"£i¼CEå!,æžœæ,"éœ€è|ç"±ç¬¬ä,%œ-¹è%œ,é'ç™¼æ©ÿæ§ç°½ç½²æ,"çš,,CAPFè%œ,i¼CE

è!å'Si¼šå!,æžœåœ"CAPFæœå™å•ÿç""å'CEå•ÿå•æ™,é†æ-°ç"ÿæ^CAPFè%œ,æ^-åCE-å..
[CSCue55353 â€”](#)
[åœ"é†æ-°ç"ÿæ^é»è©±é†ç½®çš,,TVS/CCM/CAPFè%œ,æ™,æ-°åçžè!åš](#)

æ³æ, i¼šål, æžææ, çš, CUCMç%ææ-æ”æ SBDi¼CEå%ç, jè«æ, çš, CUCMç¾æé†æ~å
8.0(1)å Šæ’ é«ç%ææ-çš, ä, éf” â†tã€, åæ” é™ä°ç%ææ-çš, CUCMä, i¼CEITLæ”æ; â

åæ” CUCMçš, æ—©ææÿç%ææ-ä, i¼CEéæ€èé... ç½®æ·å æ” jå¼ çš, ç¾æé†ä»¥æ” æ
VPNå Çæ” çç” è«ä»½é©—è%çš, é»è©±è«ä»½è%æ, çš, éšœç™ã€,

åæ” CUCMç¾æé†ä, çš, æ%ææ% TFTPä¼ææ” ä, Šé è; Cshow
itlå ‘½ä»ã€, è«æ”æ, i¼CEITLæ”æ; çç°å” | åCE...å «CAPFè%æ, ä€,

ä¾å, i¼CEä, çæ”å” | é©—CUCM Subscriber ao115subçš, show itlè¼, åçš, æ”è”ã€,

è»i¼šææ”æ; ææ%ä, €å€ITLè”éCE, æçç»i¼CEå... çŠÿè½ç, °CAPFã€,

è»i¼šål, æžæITLæ”æ; æ²ææ% CAPFæçç»i¼CEè«ç™»å... ¥å° CUCMç™¼ä½èè... ä, çç°èª
**Unified Serviceability > Tools > Service Activation > CUCM Publisher >
Security**i¼CEç, ç¾æå•ÿç” Cisco Certificate Authority Proxy Function
Serviceã€, å, æžæææ”å”å²åœç””i¼CEè€CEæ, ”å%å%å•ÿç”” ä°†è²ææ”å”i¼CEè«åž
**Unified Serviceability > Tools > Control Center - Feature Services > Server > CM
Services**i¼CEç, ç¾æåæ” CUCMé†ç¾æä, çš, æ%ææ% TFTPä¼ææ” ä, Šé çæ-°å•ÿå•Cisco
TFTPææ”å”æ»¥é†æ-°ç”ÿæ”ITLæ”æ; ä€, æåå-i¼CEè«çç°ä; ææå½ä, CiscoéCE”èª
[CSCuj78330](#)ã€,

è»i¼šå@CEæ”å¾CEi¼CEåæ” CUCMé†ç¾æä, çš, æ%ææ% TFTPä¼ææ” ä, Šé è; Csh
itlå ‘½ä»ã¼CEä»¥é©—è%çç¾æ% CUCMç™¼ä½èè... CAPFè%æ, çç¾æåæ”æ”å” | åCE...å«.

<#root>

ITL Record #:1

BYTEPOS TAG LENGTH VALUE

1 RECORDLENGTH 2 727

2 DNSNAME 2

3 SUBJECTNAME 64 CN=CAPF-7f0ae8d7;OU=TAC;O=Cisco Systems;L=Boxborough;ST=MA;C=US

4 FUNCTION 2 CAPF

5 ISSUERNAME 64 CN=CAPF-7f0ae8d7;OU=TAC;O=Cisco Systems;L=Boxborough;ST=MA;C=US

6 SERIALNUMBER 16 64:F2:FE:61:3B:79:C5:D3:62:E2:6D:AB:4A:8B:76:1B

7 PUBLICKEY 270

8 SIGNATURE 256

11 CERTHASH 20 C3 E6 97 D0 8A E1 0B F2 31 EC ED 20 EC C5 BC 0F 83 BC BC 5E

12 HASH ALGORITHM 1 null

ITL Record #:2

BYTEPOS TAG LENGTH VALUE

1 RECORDLENGTH 2 717

2 DNSNAME 2

3 SUBJECTNAME 59 CN=ao115pub;OU=TAC;O=Cisco Systems;L=Boxborough;ST=MA;C=US

4 FUNCTION 2 TVS

5 ISSUERNAME 59 CN=ao115pub;OU=TAC;O=Cisco Systems;L=Boxborough;ST=MA;C=US

6 SERIALNUMBER 16 6B:99:31:15:D1:55:5E:75:9C:42:8A:CE:F2:7E:EA:E8

7 PUBLICKEY 270

8 SIGNATURE 256

11 CERTHASH 20 05 9A DE 20 14 55 23 2D 08 20 31 4E B5 9C E9 FE BD 2D 55 87

12 HASH ALGORITHM 1 null

ITL Record #:3

BYTEPOS TAG LENGTH VALUE

1 RECORDLENGTH 2 1680

2 DNSNAME 2

3 SUBJECTNAME 71 CN=ITLRECOVERY_ao115pub;OU=TAC;O=Cisco Systems;L=Boxborough;ST=MA;C=US

4 FUNCTION 2 System Administrator Security Token

5 ISSUERNAME 71 CN=ITLRECOVERY_ao115pub;OU=TAC;O=Cisco Systems;L=Boxborough;ST=MA;C=US

6 SERIALNUMBER 16 51:BB:2F:1C:EE:80:02:16:62:69:51:9A:14:F6:03:7E

7 PUBLICKEY 270

8 SIGNATURE 256

9 CERTIFICATE 963 DF 98 C1 DB E0 61 02 1C 10 18 D8 BA F7 1B 2C AB 4C F8 C9 D5 (SHA1 Hash HEX)

This etoken was not used to sign the ITL file.

ITL Record #:4

BYTEPOS TAG LENGTH VALUE

1 RECORDLENGTH 2 717

2 DNSNAME 2

3 SUBJECTNAME 59 CN=ao115sub;OU=TAC;O=Cisco Systems;L=Boxborough;ST=MA;C=US
4 FUNCTION 2 TVS
5 ISSUERNAME 59 CN=ao115sub;OU=TAC;O=Cisco Systems;L=Boxborough;ST=MA;C=US
6 SERIALNUMBER 16 65:E5:10:72:E7:F8:77:DA:F1:34:D5:E3:5A:E0:17:41
7 PUBLICKEY 270
8 SIGNATURE 256
11 CERTHASH 20 00 44 54 42 B4 8B 26 24 F3 64 3E 57 8D 0E 5F B0 8B 79 3B BF
12 HASH ALGORITHM 1 null

ITL Record #:5

BYTEPOS TAG LENGTH VALUE

1 RECORDLENGTH 2 1652
2 DNSNAME 2
3 SUBJECTNAME 59 CN=ao115sub;OU=TAC;O=Cisco Systems;L=Boxborough;ST=MA;C=US
4 FUNCTION 2 System Administrator Security Token
5 ISSUERNAME 59 CN=ao115sub;OU=TAC;O=Cisco Systems;L=Boxborough;ST=MA;C=US
6 SERIALNUMBER 16 48:F7:D2:F3:A2:66:37:F2:DD:DF:C4:7C:E6:B9:CD:44
7 PUBLICKEY 270
8 SIGNATURE 256
9 CERTIFICATE 959 20 BD 40 75 51 C0 61 5C 14 0D 6C DB 79 E5 9E 5A DF DC 6D 8B (SHA1 Hash HEX)
This etoken was used to sign the ITL file.

ITL Record #:6

BYTEPOS TAG LENGTH VALUE

1 RECORDLENGTH 2 1652
2 DNSNAME 2
3 SUBJECTNAME 59 CN=ao115sub;OU=TAC;O=Cisco Systems;L=Boxborough;ST=MA;C=US
4 FUNCTION 2 TFTP
5 ISSUERNAME 59 CN=ao115sub;OU=TAC;O=Cisco Systems;L=Boxborough;ST=MA;C=US
6 SERIALNUMBER 16 48:F7:D2:F3:A2:66:37:F2:DD:DF:C4:7C:E6:B9:CD:44
7 PUBLICKEY 270
8 SIGNATURE 256
9 CERTIFICATE 959 20 BD 40 75 51 C0 61 5C 14 0D 6C DB 79 E5 9E 5A DF DC 6D 8B (SHA1 Hash HEX)

ITL Record #:7

BYTEPOS TAG LENGTH VALUE

1 RECORDLENGTH 2 1031
2 DNSNAME 9 ao115sub
3 SUBJECTNAME 62 CN=ao115sub-EC;OU=TAC;O=Cisco Systems;L=Boxborough;ST=MA;C=US
4 FUNCTION 2 TFTP
5 ISSUERNAME 62 CN=ao115sub-EC;OU=TAC;O=Cisco Systems;L=Boxborough;ST=MA;C=US
6 SERIALNUMBER 16 53:CC:1D:87:BA:6A:28:BD:DA:22:B2:49:56:8B:51:6C
7 PUBLICKEY 97
8 SIGNATURE 103
9 CERTIFICATE 651 E0 CF 8A B3 4F 79 CE 93 03 72 C3 7A 3F CF AE C3 3E DE 64 C5 (SHA1 Hash HEX)

The ITL file was verified successfully.

åö`CAPFæçç®èç«çç°èªç,°ITLæççç®çš,,æf...æ³ä,¼i¼Ææ,,`ä`ä»¥åö`é»è©±ä,Šå®Ææ^è%
Stringè«ä»½é©—è%å®è£ç2048ä½çRSAè%æ,ã€,

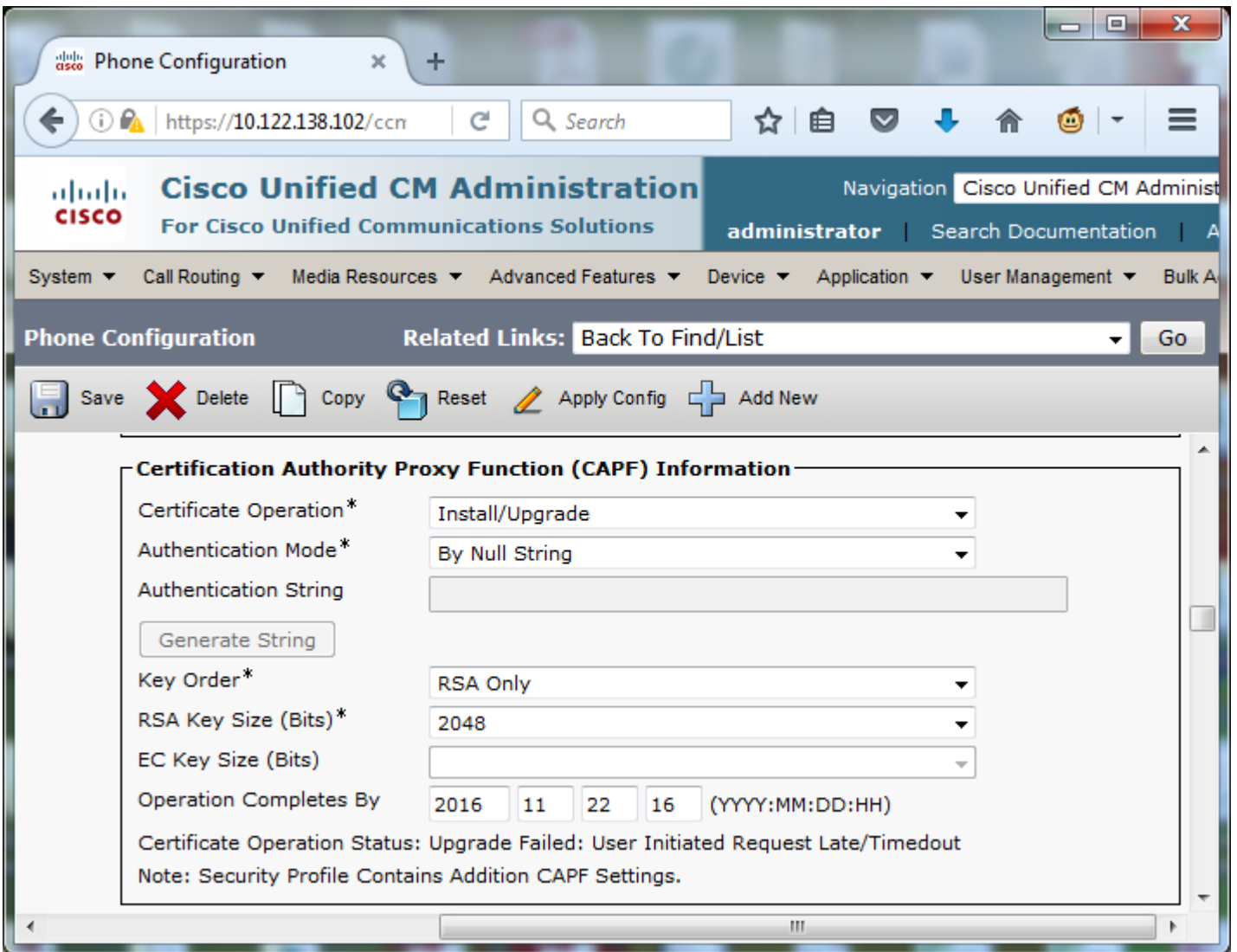
åö`é»è©±ä,Š¼¼Æçç°èªç°šææªå®è£çLSC¼¼Æå!¼,ä,«åö—æ%œçç°ã€æ,ã¼¼å!¼¼Æåö`79XXç³»å^—é»
4 å€” å®%å...`é...ç½ç> 4 - LSCã€,



é-â•ÿé»è©±çš,,é»è©±é... ½®é ã€‚,â°žè^â^°Cisco Unified
CMç;ç†>è£½®>é»è©±ã€‚,

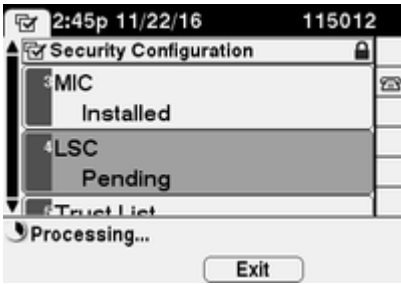
âœ°é»è©±é... ½®çš„CAPFè³†èŠšéfˆâˆ†è¼‚,â...¥â»¥â,è©³ç°è³†èŠšĩ¼CEâ!,â,âœ-æ%œçœ°ĩ¼š

- â°æ-¼è%œ>æ"ä½œi¼CEè«é,æ"†â®%è£/â†çš
- â°æ-¼è«â»½é©—è%œˆ jâ¼i¼CEé,æ"†By Null String
- âœ°œœ-çœ°â¼<â,i¼CEâ°†Key OrderâœRSA Key Size(Bits)âœEC Key Size(Bits)èˆâ®šç,ç³»çµ±é èˆâ€¼ã€‚,
- â°æ-¼ã€‚CEâ.¥â°âœCEæ^æ™,é-“ã€‚i¼CEè¼‚,â...¥è†³â°æ~â»¥â¼CEä,€â°æ™,çš„æ-¥æœœ

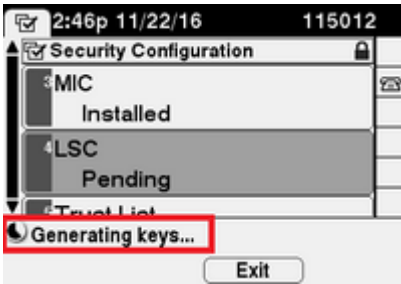


â,,âœ°é... ½®æ'æ"i¼CEç„¶â¼CEæ†%œç”é... ½®ã€‚,

é»»è©±ä,Ššš,,LSCç<€æ...<æ'æ"1ç,°ã€EPendingã i¼CEå |,ä,ãœ-æ%œçç°ã€,



é»»è©±ä°çš"Ÿæ^ã |,ãœ-æ%œçç°çš,,æCE%œé μã€,

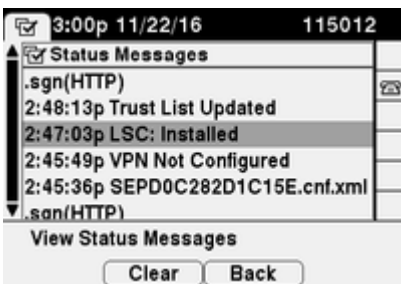


é»»è©±ä°çš i¼CEé ç½®ã®CEæ^ã¾CEi¼CEé»»è©±LSCç<€æ...ã°æ'æ"1ç,°ã€CEã²ã®%œèEã€ i¼



é€™ä1Ÿæœfé;çç°ãœ"é»»è©±çš,,ã€CEStatus

Messagesi¼^ç<€æ...<æ"æ i¼%ã€ã, i¼CEå |,ä,ãœ-æ%œçç°ã€,



é©—è%œ

ã½çç"æœçç°€ã...šã®i¼CEçç°èæ, çš,,çμ,,æ...<æ~ã |æEã,,éã½œã€,

è é©—è%œãššã€<é»»è©±ä,Ššš,,LSCè%œæ,ã®%œèE i¼CEè«ãfé-±Cisco Unified Communications

Managerç%œ^æœ-11.0(1)ã®%œã...æCEã—çš,,ç"Ÿæ^CAPFã ±ãŠššé"ã†ã€æ^-è€...i¼CEä1Ÿæ^ã»¥ã½çç"æ

è!


```
admin:utils itl reset localkey
Enter CCM Administrator password :
```

Locating active Tftp servers in the cluster.....

Unable to determine the active and running TFTP nodes in the cluster
Ensure that the DB replication is working on all nodes and the correct Password has been entered
Then retry the command

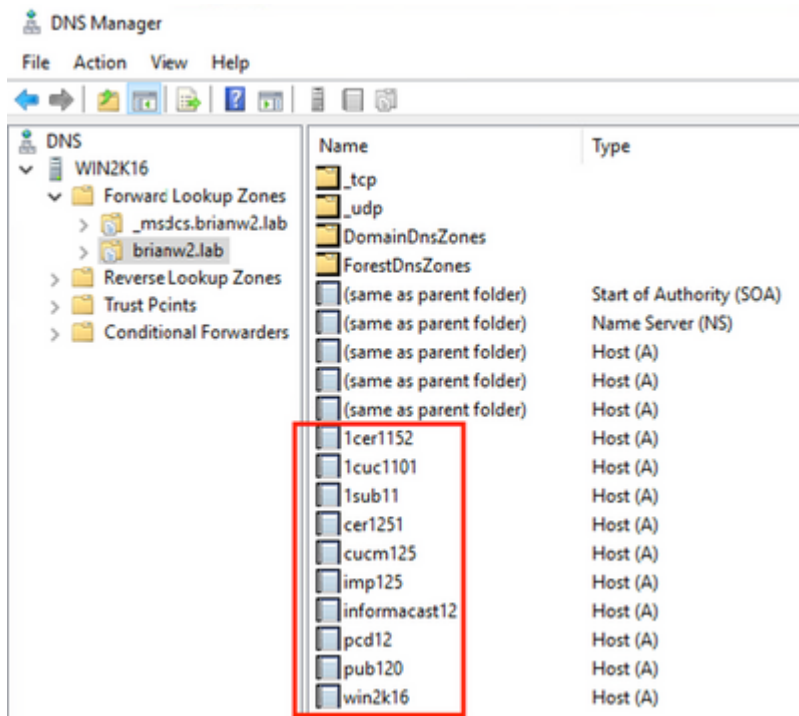
Executed command unsuccessfully
chmod: changing permissions of /var/log/active/cm/trace/dbl/sdi/replication_scripts_output

- ç”±æ-¼TVSæ...éšœi¼Eé»è©±ç,,jæ³•é©—è%æ-°LSCã€,
- é»è©±ä½ç”MICè%æ»i¼Eä½†ã€Eé»è©±é...ç½®ã€é é é çä,Šçš,,ã€Eè%æ»é 'ç™¼æ©ÿæš
- é»è©±ç,,jæ³•èššæž CUCMçš,,FQDNã€,

ãœ”æœ€ã¼Eä, €ã€ã æ™-ä,i¼Eä½†é©—ã®çç’ãœfè”ã®šç, °æ”jæ“-é»è©±ç,,jæ³•èššæž CUCMçš,,FQDNæ™,æ

- é çèjE11.5.1.15038-2ç%oo^çš,,CUCMç™¼ä½†è€...ã’Eè” ,é-±è€...
- Windows 2016 Serverè”ã®šç, °æ^çš,,DNSä¼°æœ çã™”

ã çæ-¼æ,-è©¼i¼Eæ²æœ%ooç, °PUB11 CUCMä¼°æœ çã™” é... ç½®çš,,DNSæç ç®ã€,



ã.²ã~—è©¼ã°†LSCæž”éœ çã”ã” | é©—ã®çä,çš,,æÿ çã€é»è©±(8845)ã€,è«æ³” æ,, ç¼Eã®fä» éj çç°ã
Operation Status: Operation
Pendingi¼^è%æ»æ” çã½œçç€æ...i¼šæ” çã½œæž>èµ·i¼%oã€ çã€,

Certification Authority Proxy Function (CAPF) Information

Certificate Operation*

Authentication Mode*


Authentication String

Key Order*

RSA Key Size (Bits)*

EC Key Size (Bits)

Operation Completes By (YYYY:MM:DD:HH)

Certificate Operation Status: Operation Pending 

Note: Security Profile Contains Addition CAPF Settings.

åö·é»»è©±æŽšâ¶æª-æ—ŸèªEä,i¼Eæªçè!-é»»è©±ã~è©!æŸŸè©çã...¶æœ-åœ°ã¿«ã❖-(127.0.0.1)ï¼Eç,,¶ã³¼C

```
0475 INF Mar 12 15:07:53.686410 dnsmasq[12864]: query[A] PUB11.brianw2.lab from 127.0.0.1
0476 INF Mar 12 15:07:53.686450 dnsmasq[12864]: forwarded PUB11.brianw2.lab to X.X.X.X
0477 INF Mar 12 15:07:53.694909 dnsmasq[12864]: forwarded PUB11.brianw2.lab to X.X.X.X
0478 INF Mar 12 15:07:53.695263 dnsmasq[12864]: reply PUB11.brianw2.lab is NXDOMAIN-IPv4
0479 INF Mar 12 15:07:53.695833 dnsmasq[12864]: query[A] PUB11.brianw2.lab from 127.0.0.1
0480 INF Mar 12 15:07:53.695865 dnsmasq[12864]: cached PUB11.brianw2.lab is NXDOMAIN-IPv4
0481 WRN Mar 12 15:07:53.697091 (12905:13036) JAVA-configmgr MQThread|NetUtil.traceIPv4DNSErrors:? - DNS
```

++ However, we see that the phone is not able to resolve the FQDN of the CUCM Publisher. This is because

```
0482 ERR Mar 12 15:07:53.697267 (12905:13036) JAVA-configmgr MQThread|cip.sec.TvsProperty:? - Failed to
```

++ Afterwards, we see the CAPF operation fail. This is expected because we do not have a DNS mapping for

```
0632 NOT Mar 12 15:07:55.760715 (12905:13036) JAVA-configmgr MQThread|cip.sec.CertificateProperty:? - Ce
0633 NOT Mar 12 15:07:55.761649 (322:17812) SECUREAPP-RCAPF_START_MODE: Start CAPF - mode:[1]([NULL_STR]
0634 NOT Mar 12 15:07:55.761749 (322:17812) SECUREAPP-CAPF_CLNT_INIT:CAPF clnt initialized
0635 NOT Mar 12 15:07:55.761808 (322:17812) SECUREAPP-CAPFClnt: SetDelayTimer - set with value <0>
0636 ERR Mar 12 15:07:55.761903 (322:17812) SECUREAPP-Sec create BIO - invalid parameter.
0637 ERR Mar 12 15:07:55.761984 (322:17812) SECUREAPP-SEC_CAPF_BIO_F: CAPF create bio failed
0638 ERR Mar 12 15:07:55.762040 (322:17812) SECUREAPP-SEC_CAPF_OP_F: CAPF operation failed, ret -7
0639 CRT Mar 12 15:07:55.863826 (12905:13036) JAVA-configmgr MQThread|cip.sec.CertificateProperty$1:? -
```

++ What we would expect to see is something similar to the following where DNS replies with the IP address

```
4288 INF Mar 12 16:34:06.162666 dnsmasq[12864]: query[A] PUB11.brianw2.lab from 127.0.0.1
4289 INF Mar 12 16:34:06.162826 dnsmasq[12864]: forwarded PUB11.brianw2.lab to X.X.X.X
4290 INF Mar 12 16:34:06.164908 dnsmasq[12864]: reply PUB11.brianw2.lab is X.X.X.X
4291 NOT Mar 12 16:34:06.165024 (12905:13036) JAVA-configmgr MQThread|cip.sec.TvsProperty:? - Resolve Tr
```

è««ã❖fé-±ä,é❖ççš,,é»»è©±ç<ææ...è³†è·Ši¼EæE†ã†°é»»è©±ç,,¶æ³·èšÆæž❖PUB11.brianw2.labã€,,éš·

Status messages

Cisco IP Phone CP-8845 (SEP682C7B5C2342)

[14:05:42 03/15/21] DNS unknown IPv4 host PUB11.brianw2.lab
[14:05:44 03/15/21] VPN not configured
[14:05:44 03/15/21] DNS unknown IPv4 host PUB11.brianw2.lab
[11:13:25 03/16/21] SEP682C7B5C2342.cnf.xml.sgn(HTTP)
[11:13:25 03/16/21] DNS unknown IPv4 host PUB11.brianw2.lab
[11:13:27 03/16/21] VPN not configured
[11:13:27 03/16/21] DNS unknown IPv4 host PUB11.brianw2.lab
[11:13:27 03/16/21] LSC: Connection failed
[11:13:50 03/16/21] LSC: Connection failed
[11:14:10 03/16/21] LSC: Connection failed

èl⚡è€fæ...@çš,,ç¼°é™·i¼š

æ€⚡çš'é€¯èªID [CSCub6243](#) -

LSCâ@%øè£⚡é-“æ†æ€šâ±æ•—i¼€ç,,¶¼€â†⚡çµ⚡CAPFä¼°æœ⚡â™”

èl⚡è€fæ...@çš,,âçžâ¼·ç¼°é™·i¼š

æ€⚡çš'é€¯èªID [CSCuz18034](#) â€” éœ€œ⚡â ±âšLSCâ@%øè£⚡çš,,çµ,ç«¯â»¥â⚡šâ°æœÿç<€æ...<

ç> ,é—œè³†èš

é€™ä°>æªª;^æ⚡⚡ä¾æœ%øé—œâœ”ç””æ-¼AnyConnect

VPNâ@çæ^¶ç«¯è°«â»½é©—è%øâ'€802.1Xè°«â»½é©—è%øçš,,ä,šä,æ-†ä,ä½¼ç””LSCçš,,è©³ç'°è³†èššä

- [AnyConnect VPNé»è©± â€” IPé»è©±â⚡ASAâ'€CUCMæ•...éšœæž'é™ª](#)
- [âÿ°æ-¼è°«â»½çš,,ç¶è·æœ⚡â<™i¼šâ·ÿç””IEEE 802.1Xçš,,ç¶è·ä,çš,,IPé»è©±éƒ”ç½²â'€é...⚡ç½@æ€†â⚡—](#)

é,,æœ%øä,€ç”@é<çšž<â¥çš,,LSCé...⚡ç½@i¼€â...¶ä,LSCè%øæ,ç”±ç¬â,æ-¹è%øæ,é'ç™¼æ©ÿæš<ç>

æœ%øé—œè©³ç'°è³†èšš¼€è«â⚡fé-±i¼šCUCMç¬â,æ-¹CAç°¼â⚡⚡çš,,LSCç”ÿæ^â'€â€¯â...¥é...⚡ç

- [æš€èj“æ”æè^†æ-†â»¶ - Cisco Systems](#)

關於此翻譯

思科已使用電腦和人工技術翻譯本文件，讓全世界的使用者能夠以自己的語言理解支援內容。請注意，即使是最佳機器翻譯，也不如專業譯者翻譯的內容準確。Cisco Systems, Inc. 對這些翻譯的準確度概不負責，並建議一律查看原始英文文件（提供連結）。