

配置UCCX智慧許可 — 直接型號

目錄

[簡介](#)

[必要條件](#)

[需求](#)

[採用元件](#)

[背景資訊](#)

[智慧許可概述](#)

[部署型別](#)

[設定](#)

[組態](#)

[直接連線](#)

[身份驗證令牌生成](#)

[使用智慧帳戶註冊](#)

[驗證](#)

[疑難排解](#)

簡介

本文檔介紹在Contact center express上啟用智慧許可的配置。

必要條件

需求

思科建議您瞭解以下主題：

Cisco整合客服中心Express(UCCX)版本12.5

採用元件

Cisco整合客服中心Express(UCCX)版本12.5

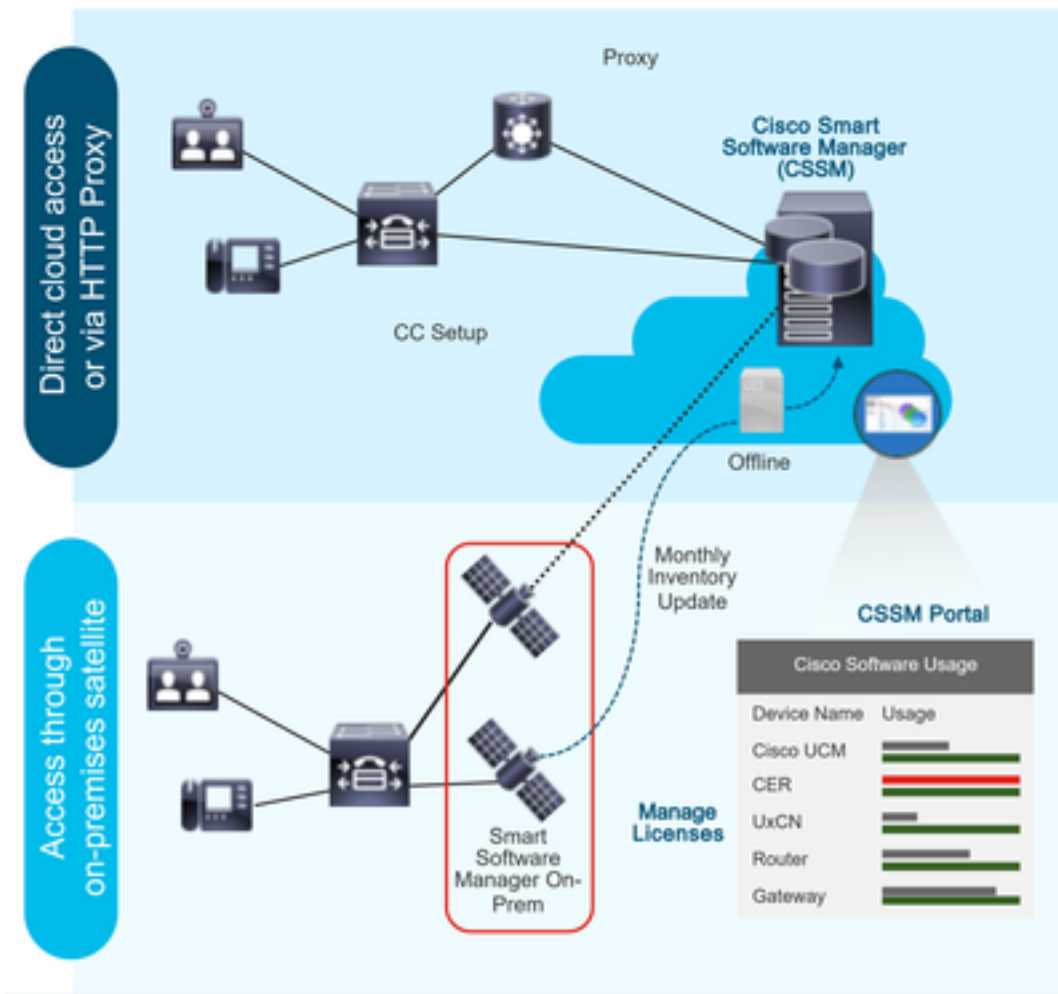
本文中的資訊是根據特定實驗室環境內的裝置所建立。文中使用到的所有裝置皆從已清除（預設）的組態來啟動。如果您的網路運作中，請確保您瞭解任何指令可能造成的影響。

背景資訊

智慧許可概述

思科智慧軟體許可是一種考慮許可的新方法。它可以簡化整個企業的許可體驗，使購買、部署、跟蹤和續訂思科軟體更加輕鬆。它通過單一、簡單的使用者介面提供對許可證所有權和使用量的可視

性。



您在Cisco Commerce上下訂單並且訂單與智慧帳戶相關聯，此資訊將填充到思科網站上的智慧軟體管理器中。現在，您可以全面瞭解您已訂購和購買的內容。

已啟用智慧許可的產品（通過CLI或GUI）註冊到CSSM，然後向CSSM報告許可證使用情況。

部署型別

存在兩種模型來報告使用情況：

直接模型 — 在裝置可以直接與Internet通訊或可以通過HTTPS代理連線到Internet的環境中使用此模型。與CSSM的通訊是透過HTTPS，因此所有流量會在傳輸過程中加密。如果流量是通過HTTPS代理或傳輸網關傳送的，則在需要應用其他檢查或安全策略時，裝置與CSSM之間的所有通訊都將通過集中位置進行通道化。

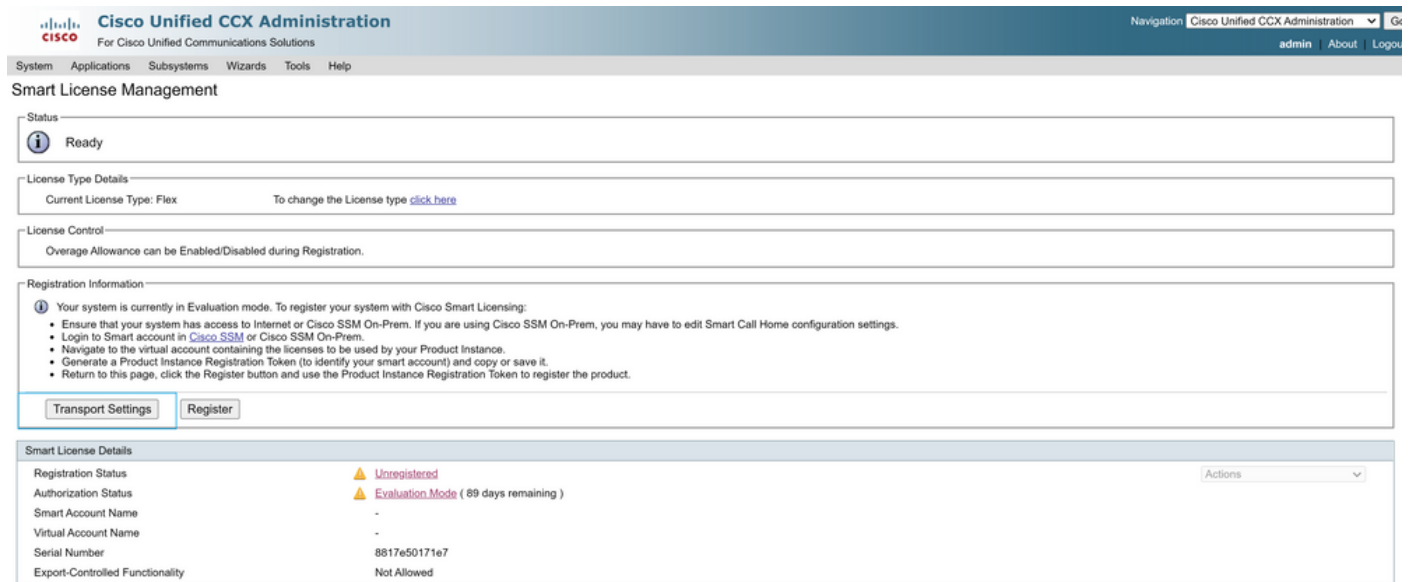
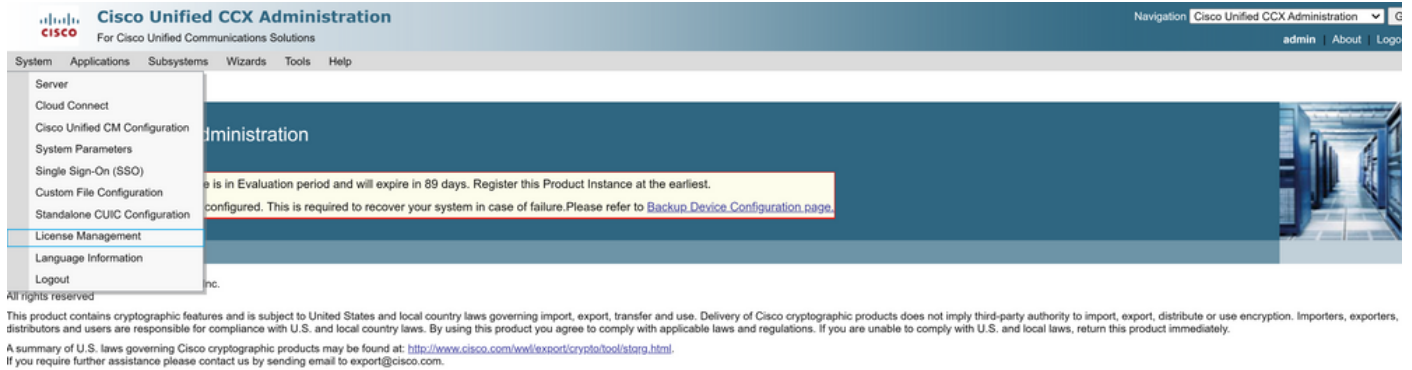
中介部署模型 — 在裝置沒有任何形式連線到Internet因而無法訪問CSSM的網路中使用此模型。此部署模式要求您在本地安裝CSSM衛星虛擬機器，然後所有內部主機都可以訪問該虛擬機器。本地衛星可以按每月、每週與CSSM同步的連線模式部署，或者可以完全斷開的配置（需要手動上傳和下載檔案以保持衛星同步）部署。建議至少每30天進行一次同步。

設定

組態

直接連線

在UCCX管理員頁面下，導航到System > Licensing > License Management > Transport設定，選擇直接連線選項，然後選擇測試連線選項。測試連線成功後，選擇儲存選項。




Transport Settings

Status

 Ready

Configure how the product will communicate with Cisco. Note that this setting is shared with Smart Call Home, so any changes made here will apply to other features using this service.

- Direct** - product communicates directly with Cisco's licensing servers.
URL: "https://tools.cisco.com/its/service/oddce/services/DDCEService"
- Transport gateway** - proxy data via Transport Gateway or Cisco SSM On-Prem
URL:
- HTTP/HTTPS proxy** - send data via an intermediate HTTP or HTTPS proxy
Host Name:
Port:

 Successful

身份驗證令牌生成

1. 使用您的使用者名稱和密碼登入<https://software.cisco.com/>。
2. 在「智慧軟體許可」下選擇庫存
3. 選擇新令牌
4. 輸入說明、使用後到期和使用編號
5. 選擇建立令牌選項
6. 複製生成的令牌

Virtual Account: UCCX_TAC ▾

General Licenses Product Instances Event Log

Local Virtual Account

Description

Default Local Virtual Account: No

Product Instance Registration Tokens

The registration tokens below can be used to register new product instances to this Local Virtual Account. For products which support Smart Transport you must configure the "license smart url" on the product to use the [Smart Transport Registration URL](#). For legacy products which still use Smart Call Home, you must configure "destination address http" on the product to use the [Smart Call Home Registration URL](#). The recommended method is Smart Transport. Please consult your Products Configuration Guide for setting the destination URL value.

Create Registration Token



This dialog will generate the token required to register your product instances with your Alpha Account.

| | |
|---------------------|--|
| Virtual Account | UCCX_TAC |
| Description | <input type="text" value="UCCX"/> |
| Expire After | <input type="text" value="30"/> Days <i>Enter the value between 1 and 365, but Cisco recommends a maximum of 30 days</i> |
| Max. Number of Uses | <input type="text" value="5"/> <i>The token will be expired when either the expiration or the maximum uses is reached</i> |

Allow export-controlled functionality on the products registered with this token

Create Token

Cancel

Registration Token



```
NTU5ODM5MDktMWEwOS00NjNjLThhNWEtMGI1MjY0MzEzYTBhLT  
E2NTA1MDU0%0ANTU0MzB8VVM5OXU4cFpUaU9jRUtWTVdtaUpL  
N3N6U0F4M2RZUmdTY0pOMCtx%0Ab0NMRT0%3D%0A
```

Press ctrl + c to copy selected text to clipboard

使用智慧帳戶註冊

1. 選擇智慧許可管理中的註冊選項
2. 貼上複製的註冊令牌
3. 選擇暫存器選項

Smart License Management

| | | | | | | | | | | | | | | | | | | | |
|---------------------------------|--|---------------------|--------------|---------|----------------------|---------------------------------------|--|--------------------|---|--|----------------------|---|--|---------------|--------------|--|---------------------------------|-------------|--|
| Status | Ready | | | | | | | | | | | | | | | | | | |
| License Type Details | Current License Type: Flex To change the License type click here | | | | | | | | | | | | | | | | | | |
| License Control | Overage Allowance can be Enabled/Disabled during Registration. | | | | | | | | | | | | | | | | | | |
| Registration Information | Your system is currently in Evaluation mode. To register your system with Cisco Smart Licensing: <ul style="list-style-type: none">• Ensure that your system has access to Internet or Cisco SSM On-Prem. If you are using Cisco SSM On-Prem, you may have to edit Smart Call Home configuration settings.• Login to Smart account in Cisco SSM or Cisco SSM On-Prem.• Navigate to the virtual account containing the licenses to be used by your Product Instance.• Generate a Product Instance Registration Token (to identify your smart account) and copy or save it.• Return to this page, click the Register button and use the Product Instance Registration Token to register the product. | | | | | | | | | | | | | | | | | | |
| Transport Settings | <input type="button" value="Register"/> | | | | | | | | | | | | | | | | | | |
| Smart License Details | <table><tr><td>Registration Status</td><td> Unregistered</td><td>Actions </td></tr><tr><td>Authorization Status</td><td> Evaluation Mode (89 days remaining)</td><td></td></tr><tr><td>Smart Account Name</td><td>-</td><td></td></tr><tr><td>Virtual Account Name</td><td>-</td><td></td></tr><tr><td>Serial Number</td><td>8817e50171e7</td><td></td></tr><tr><td>Export-Controlled Functionality</td><td>Not Allowed</td><td></td></tr></table> | Registration Status | Unregistered | Actions | Authorization Status | Evaluation Mode (89 days remaining) | | Smart Account Name | - | | Virtual Account Name | - | | Serial Number | 8817e50171e7 | | Export-Controlled Functionality | Not Allowed | |
| Registration Status | Unregistered | Actions | | | | | | | | | | | | | | | | | |
| Authorization Status | Evaluation Mode (89 days remaining) | | | | | | | | | | | | | | | | | | |
| Smart Account Name | - | | | | | | | | | | | | | | | | | | |
| Virtual Account Name | - | | | | | | | | | | | | | | | | | | |
| Serial Number | 8817e50171e7 | | | | | | | | | | | | | | | | | | |
| Export-Controlled Functionality | Not Allowed | | | | | | | | | | | | | | | | | | |

Smart Licensing Product Registration

Status

 Ready

- Ensure that you have connectivity to the URL specified in your Smart Call Home settings. By default this requires internet access. See the online help for registering to a Cisco SSM On-Prem.
- To register the product instance, copy the Product Instance Registration Token generated from [Cisco SSM](#) or your Cisco SSM On-Prem.

Product Instance Registration Token

```
NTU5ODM5MDktMWEwOS00NjNlThhNWetMGI1MjY0MzEzYTBlTE2NTA1MDU0
%0ANTU0MzB8VVM5OXU4cFpUaU9jRUIWTVdtaUpLN3N6U0F4M2RZUmdTY0pOM
Cbc%0Ab0NMRT0%3D%0A]
```

Reregister this product instance if it is already registered

License Control

Current License Type: Flex

Overage Allowance: Enable Disable

Number of Standard Seats*

Number of Premium Seats*

 * - indicates required item.

已知缺陷：[CSCwa92591](#) 由於證書更新，智慧許可「通訊傳送錯誤」

驗證

智慧許可管理頁面上的註冊狀態從「未註冊」更改為「已註冊」，授權狀態從「評估模式」更改為「已授權」。

疑難排解

1. 對於直接部署，需要在防火牆上開啟埠80和443
2. 收集具有預設lib_license級別的群集檢視守護程式和管理員日誌，以進一步進行故障排除
3. 對於許可證計算，將LIB_LICENSE和SS_RM啟用到CCX引擎的調試級別。
4. 「可維護性」頁下的「Cisco Unified CCX集群檢視守護程式」服務必須為「非服務」