

将思科企业移动应用与CBW150系列配合使用

目标

本文档的目标是向您展示如何将Cisco Business Mobile应用与Cisco Business 150系列接入点配合使用。

适用软件 | version

- 思科企业移动应用 | 1.2 ([在Apple App Store上下载](#)) ([在Google Play上获取](#))
- CBW150AX | 10.2.2.0
- CBW151AXM | 10.2.2.0

简介

Cisco Business Mobile应用使客户能够部署和管理受支持的思科业务设备。该移动应用旨在帮助客户设置其交换机和无线网络，并从单一设置点管理其基础设施。

Note:

CBW 15x系列设备与CBW 14x/240系列设备不兼容，不支持在同一LAN上共存。

关于思科企业移动应用，需要熟悉的一些术语：

- Greenfield Network — 尚未配置的新网络
- Brownfield Network — 已配置的现有网络
- 第0天 — 初始配置
- 第2天 — 更改或更新现有配置

📘 Note:

目前，移动应用仅支持绿地网络部署。具有现有配置的设备不会被发现或管理。

如果您已准备好使用移动应用进行配置，让我们开始进行设置！

系统要求

Cisco Business Mobile App 1.2支持CBW150AX和CBW151AXM。

目录

- [思科企业移动应用的配置](#)
- [添加站点](#)
- [站点配置](#)
- [添加设备](#)

思科企业移动应用的配置

添加站点

第 1 步

从Apple设备（iPhone或iPad）上的应用商店下载思科商务移动应用。

📘 Note:

该应用经过优化，可在iPhone上显示。如果你使用iPad，你会看到应用侧面有黑

色条纹，因为iPad的长宽比不同。

步骤 2

点击Cisco Business Mobile应用。



步骤 3

要创建网络位置，请点击+添加站点。

All Sites

+ Add Site



Create Your First Site

A site is a physical location you are going to deploy your network in. You can see all your sites here.

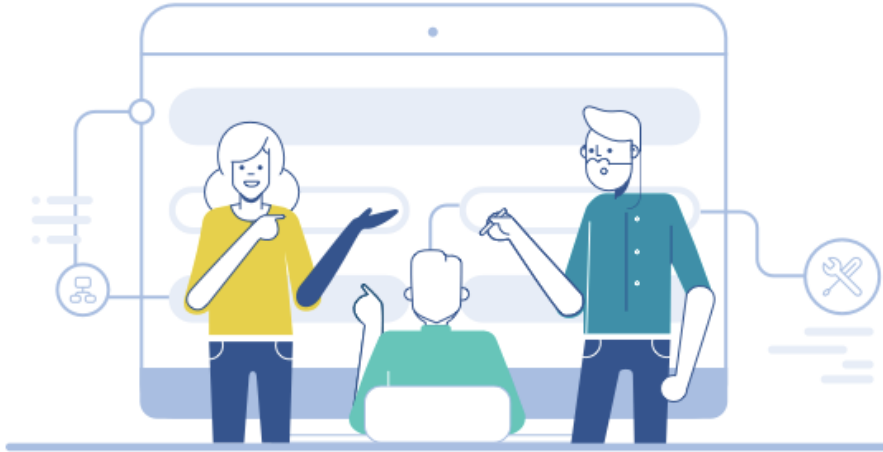


步骤 4

单击Get Started。

[< All Sites](#)

Add Site



Add Site

Name and physically locate the site that will contain the devices you are about to configure.

[Get Started](#)

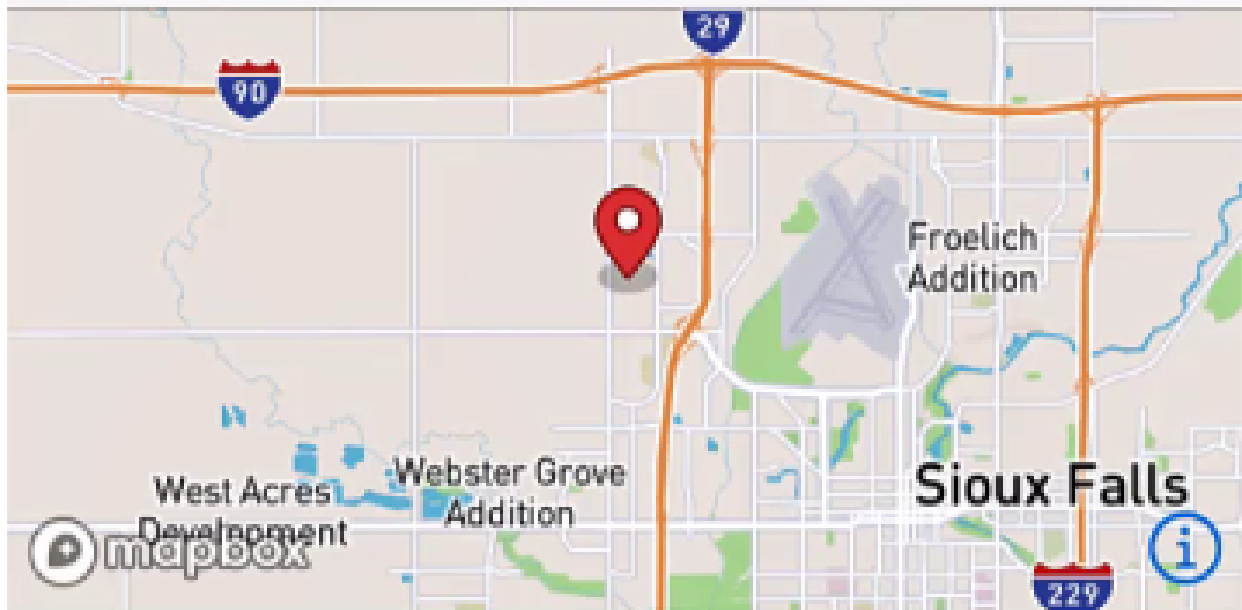
[Don't show this to me again](#)

步骤 5

配置站点名称、地址、国家/地区，然后点击下一步。

[← Add Site](#)

Add Site



What do you want to name your site?

1

Lab

Ex: San Jose or Central Station

What is the full address?

2

N Vincent Ave, Sioux Falls, SD, United States

Ex: 123 Main St, Newark, NJ 02341

Country

3

United States



4

Next

步骤 6

输入站点的Username和Password，然后单击Next。

Site Credentials

Create a username and password for this site.
These credentials will be used to access all
devices added to this site

Username

admin

1

Password

Enter password

2

Confirm Password

Enter password again

3

4

Next

① Note:

凭据将用于访问此站点上的设备。

步骤 7

您将看到Summary屏幕。要进行任何更改，请点击编辑。如果您已设置，请单击Add Site。

Summary

Almost done. Check your site detail before you create it.

Site

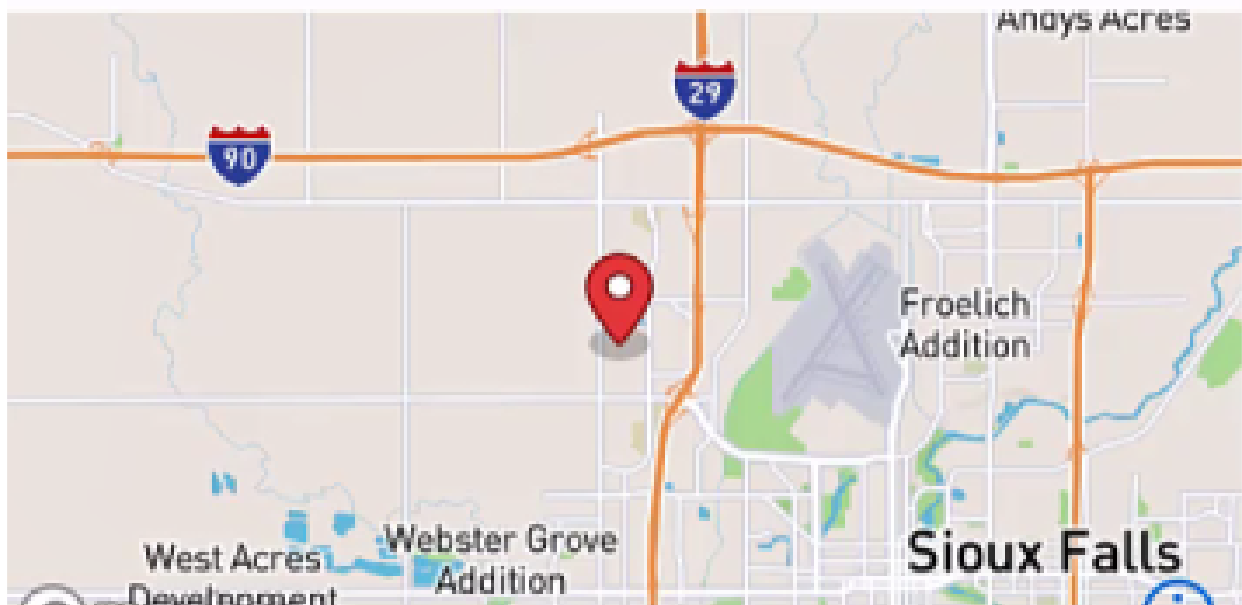


Name

Lab

Address

N Vincent Ave, Sioux Falls, SD, United States



步骤 8

单击Done。

Add Site



Done! The site "Lab" has been created

You will be able to use this site to manage your network, all networking hardware and guest devices.

Here's what you should do Next?

[Configure the Network for this Site](#)

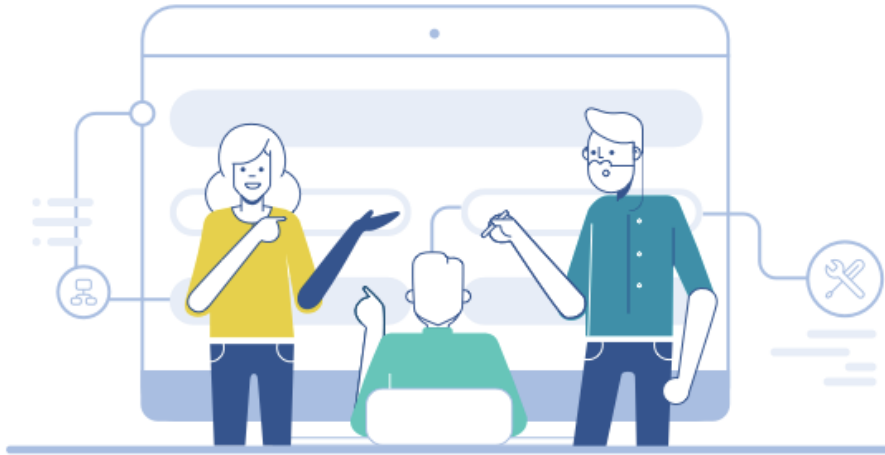
Done

站点配置

要配置站点，请执行以下步骤：

第 1 步

单击Get Started。



Tell us about your Site

Answer some questions about your preferences on how you would like to configure your site - Segmentation, Wireless preferences, advanced configuration etc.



Get Started

Don't show this to me again

步骤 2

选择一个选项以配置网络中的无线设置。在本例中，选择Yes I would to (是)。



Site Configuration

Questionnaire

Answer these questions to help us understand how you would like to set up this site

QUESTION 1

Wireless?

Would you like to enable Wi-Fi and let your users connect wirelessly at this site (Lab)?

Yes I would like to

No



步骤 3

如果有多个网络，您可以选择配置它们。在本例中,选择Just 1 is fine。



Site Configuration

Questionnaire

Answer these questions to help us understand how you would like to set up this site

Multiple Networks?

Would you like to create multiple Networks at this site (Lab)?

Some business create multiple networks for different departments or based on who is going to using them.

Example 1: Internal, Guest

Example 2: IT, Finance, Business

Create separate Wi-Fi for each network

Yes I would like to

Just 1 is fine

步骤 4

您可以手动或自动配置Advanced Settings。在本示例中，Do it automatically被选中。单击 Continue。



Site Configuration

Questionnaire

Answer these questions to help us understand how you would like to set up this site

QUESTION 3

Advanced Settings

Would you like to do the advanced configuration on your own or have us do them for you automatically?

Advanced configuration lets you configure DNS, NTP and DHCP Server settings.

I will do them on my own

1

Do it automatically

2

Continue

步骤 5

输入Network Name并单击Next。

Networks

Name the network at Lab. You can also add multiple networks if you like



Add a network

▼ Lab

Network Name

Lab

1

Network ID

1

2

Next

① Note:

如果要添加更多网络，请点击+添加网络。

步骤 6

输入网络的密码，然后单击下一步。

▼ Lab

WiFi Network Name

Lab

Associated Wired Network Name

Lab

Radio Frequency

2.4 GHz 5 GHz

Type

Employee

Authentication

WPA2 Personal

Password

1

Re-enter Password

2

3

Next

步骤 7

单击 Next (下一步) 继续。

Wireless

Choose the Management WiFi Network at Lab.

We need to know which WiFi Network you would like us to use to perform maintenance actions and network configuration changes.

Management WiFi

Lab ▼

The Management Wi-Fi is usually the one which is the most secure and is only used by known users within your organization. (Can only be Employee type with network ID 1 and the authentication cannot be Open)

Next

步骤 8

检查Summary屏幕中的详细信息。单击Confirm Site Configurations按钮完成设置。

Summary

Almost done. Check your Site detail before you create it.

∨ Network Segmentation [Edit](#)

NETWORK 1

Network Name	Lab
Network ID	1

∨ Wireless [Edit](#)

WIRELESS 1 M

SSID	Lab
2.4 GHz	enable
5 GHz	enable
Guest Network	No

[Confirm Site Configurations](#)

步骤 9

单击完成。



Done! The site configurations for "Lab" has been created

You can edit your configurations later if needed from the sites homepage

Here's what you should do Next?

[Add Devices to this Site](#)

Done

添加设备

要添加设备，请执行以下步骤：



第 1 步

单击Add Devices。



Add Devices

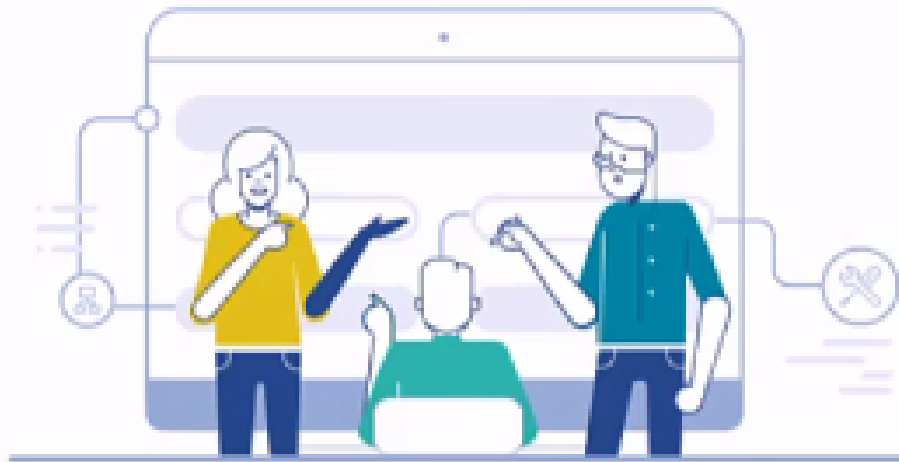
You need to finish the steps below before you your site can go live

-  **Site Configuration** 
1 wired, 1 wireless network configured
-  **Add devices**
Add switches and access points to that are part of this site.

Add Devices

步骤 2

单击Get Started。



Connect your devices

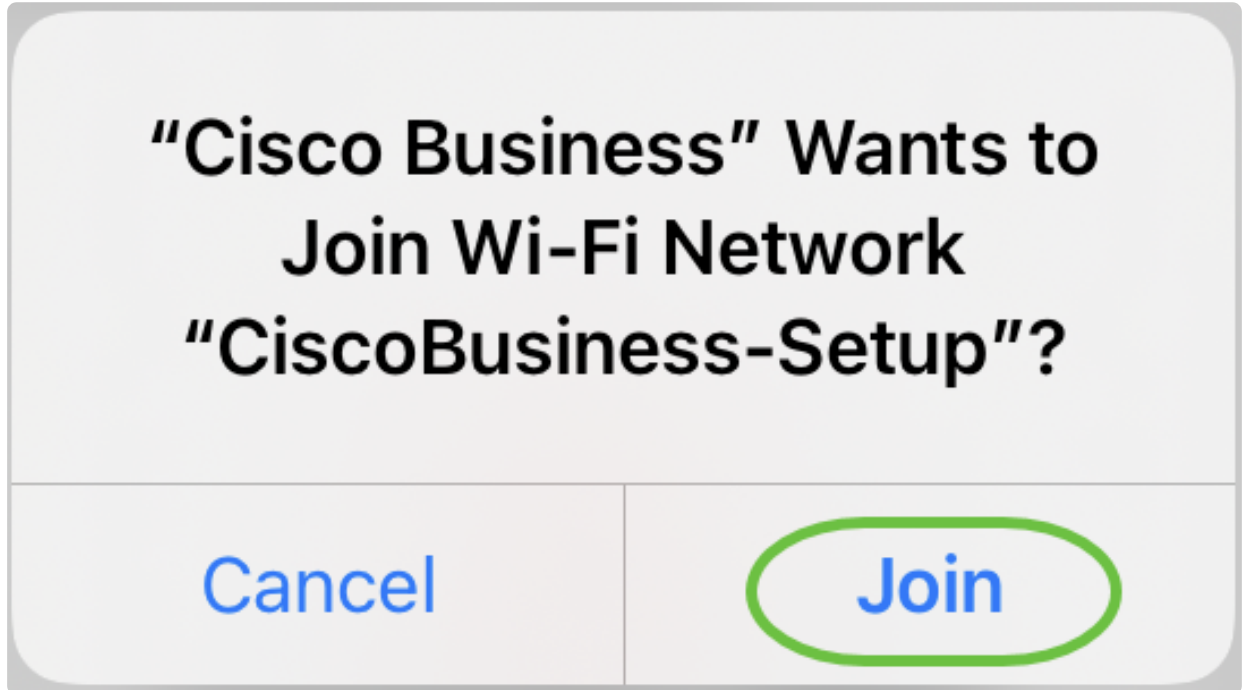
Before we proceed, please make sure that all the devices you want to add to Lab have been plugged in.

[Get Started](#)

[Don't show this to me again](#)

步骤 3

单击Join加入默认CiscoBusiness-Setup SSID。



Note:

确保无线接入点已完全启动，并且处于出厂默认设置。

步骤 4


检测到连接后，单击Done。

Setting Up for the first time?

Before we begin lets get you connected to the setup wireless network.



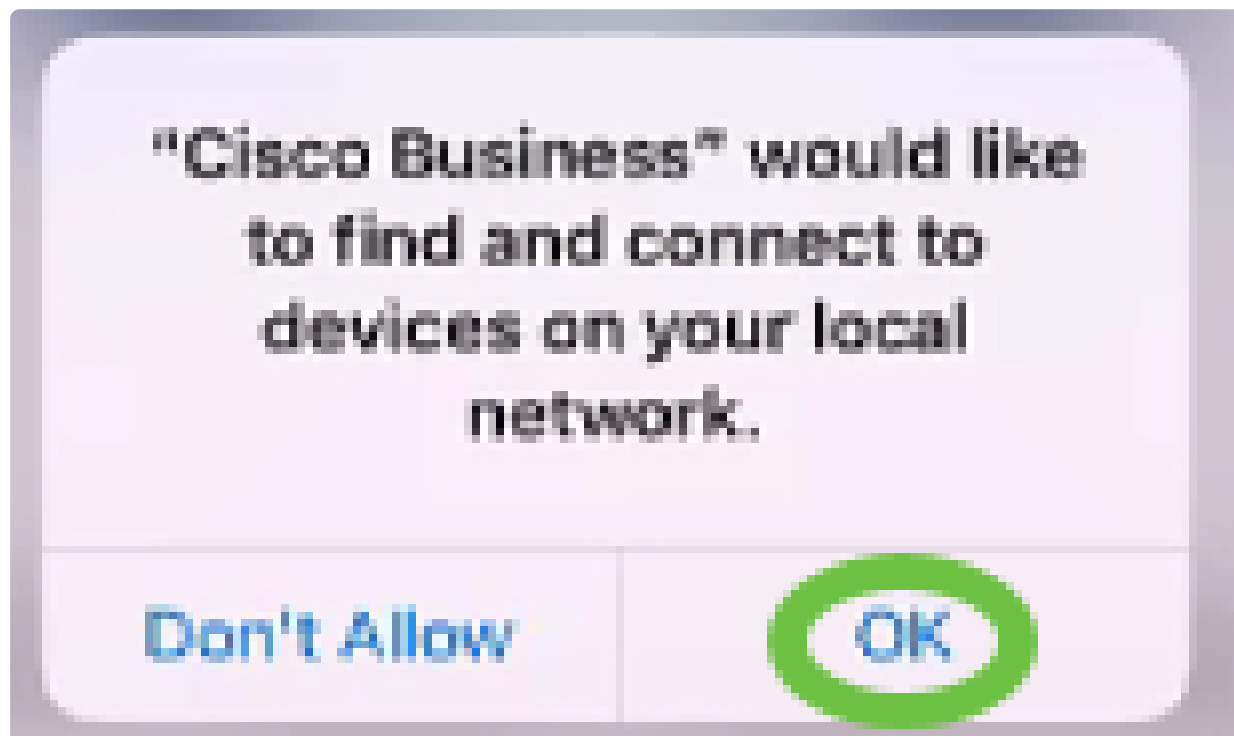
Network Available

The  **CiscoBusiness-Setup** WiFi network was detected and we are ready to connect.

Done

步骤 5

单击OK以允许思科企业网络查找并连接到思科企业设备。



步骤 6

将会检测到接入点。在本例中，它是思科企业无线接入点。单击Add Cisco Business Wireless。

Found a new device

We automatically discovered a new device via the CiscoBusiness-Setup wireless network.



Cisco Business Wireless 1 [redacted]

Type: Access Point

Should we go ahead and add this device to your network?

Add Cisco Business Wireless 1 [redacted]

Cancel

步骤 7

将会显示设备和设置的摘要。点击确认添加设备。

Summary

Almost done. Make sure you check the device and the settings to be applied to it.

∨ **Devices To Be Added**

Model Cisco Business Wireless 1

∨ **Site Settings to be applied**

The following settings will be applied to the device.

[View Site Settings](#)



Confirm Add Device

[Cancel](#)

屏幕将显示添加设备的进度。

Adding Device

Adding Device

About 9 minutes remaining

Cisco Business Wireless 1 

Type: Access Point



 Initializing device...

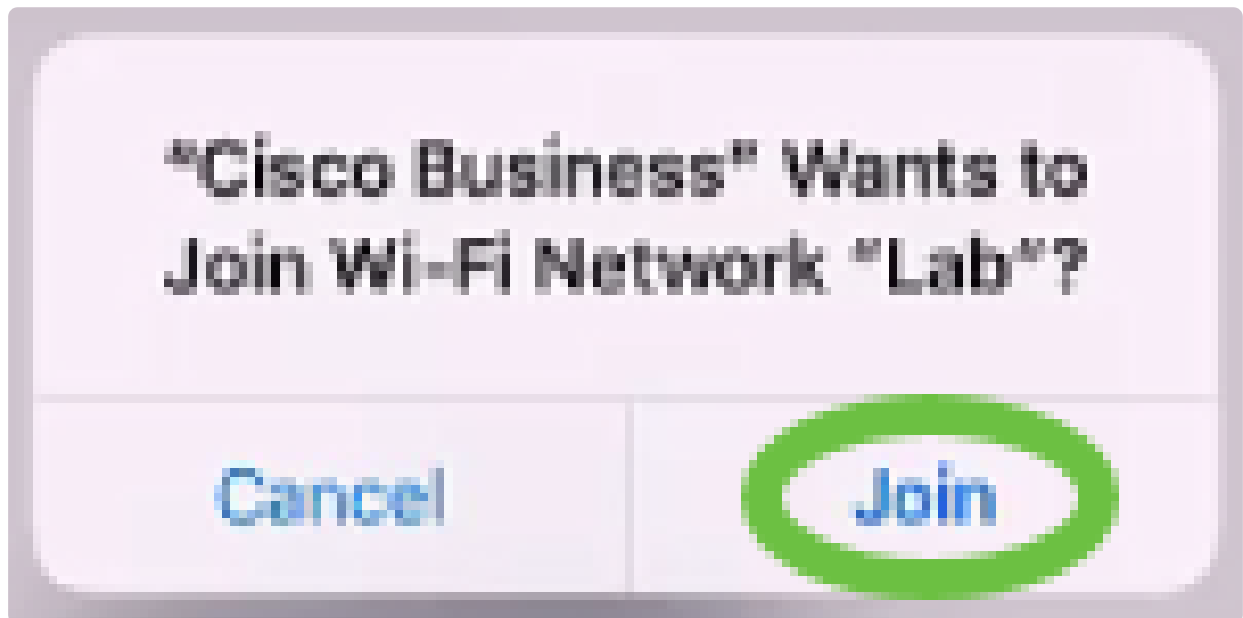
3%



Adding device. Do not quit or minimize the app till it's done

步骤 8

单击Join以允许接入点加入您创建的网络。



步骤 9

您将看到设备已成功部署的屏幕。您可以选择Add more devices或单击Done。在本示例中，选择Done。



Adding Device

Device deployed



Cisco Business Wireless 1 [redacted]

Type: Access Point

Serial No: FC [redacted] F



Cisco Business Wireless 1 [redacted] has been successfully setup is broadcasting WiFi network.

The access point is now live and added to Lab. We can now use it to add and discover other devices to your network.

Add more devices

Done

步骤 10

单击完成导航到主页。

Add Devices



Done! Your Device has
been Deployed.

AP6C71.0D54.064C has been added to your
Lab site.

What's Next?

[Add other Devices](#)

Done

结论

就这么简单！现在，您已成功使用思科企业移动应用部署CBW 150系列接入点。现在，您可以轻松管理您的网络。

现在，您知道从何处获取更多信息或提供反馈！

想了解更多有关思科企业移动应用的文章？别看了！点击以下任意标签可直接进入该主题。好好享受！

[概述](#) [故障排除](#) [设备管理](#) [帮助页面](#) [升级固件](#) [重新启动设备](#) [调试日志](#)

关于此翻译

思科采用人工翻译与机器翻译相结合的方式将此文档翻译成不同语言，希望全球的用户都能通过各自的语言得到支持性的内容。

请注意：即使是最好的机器翻译，其准确度也不及专业翻译人员的水平。

Cisco Systems, Inc. 对于翻译的准确性不承担任何责任，并建议您总是参考英文原始文档（已提供链接）。