

# ä½ç”CUCMåœ”IPç”µ ä,Šé...ç½®LSC

ç»®å½

ç»®ä»»

å...^å†³æ»ä»¶

è»æ±,

ä½ç”çš„ç»„ä»¶

èfEæ™-ä½jæ»

MICä,ŽLSC

é...ç½®

ç½”ç»œæ«œ%œ

éªEè»

æ...éšœæŽ’ é™œ

æ— æœ%œ^ CAPF æœ» äŠjå™”

LSCi¼šè;žæŽŸå±è ¥

LSCi¼šå±è ¥

LSCi¼šæ“ ä½œæE,èµ:

ç»„å...³ä½jæ»

ç»®ä»»

æœ-æ-†æjæ»ç»» ä½, ä½•åœ” æœçš’ä’è” ç½”å» è»®ç”µè” i¼^æœçš’IPç”µè” i¼%œ,Šå®%œE

å...^å†³æ»ä»¶

è»æ±,

Cisco å»°è»æ, ”å†èššæ»Ÿä, <ä, >éç”i¼š

- Cisco Unified Communications Manager(CUCM)é†ç¾åå®%å...”æ”i¼»éœ%œéj¹
- X.509è»ä¹
- å¶œæ å®%œèš...è»ä¹(MIC)
- LSCs
- è»ä¹|éç»å»æœœæŽ„ä»Eç»†åŠŸèf½(CAPF)è»ä¹|æ”ä½œ
- é»è»å®å®%å...”æœš(SBD)
- å»åšçä½jæ»»å^—èj”(ITL)æ-†æ»¶

ä½ç”çš„ç»„ä»¶

æœ-æ-†æjæ»çš„,ä½jæ»-åŸ°ä°žæ”æE»SBDçš„CUCMç%œ^æœ-i¼Eå»³CUCM

8.0(1)å»Šæ’è«ç%œ^æœ-äœ,

Listi¼CEç,,¶ā Žèç è;CEå...³ä°ŽāŠÿèf½i¼šè»~è®¼å®%å...`çš,,æŠŸāŠã€,

æœ-æ-†æ;fä,çš,,äç;æ-éf½æ-äÿ°ä°Žç%å¹å®šå®žéªCEå®¼Ž-äçfä,çš,,è®¾å¼å¼ç¼-å†™çš,,ã€,æœ-æ-†æ

èfCEæ™-äç;æ-

MICä,ŽLSC

ål,æžœæ,,å-1802.1Xæ^-Anyconnectç”-VPNä½ç””äÿ°ä°Žè-ä¹|çš,,è°«ä»½éªCEè-i¼CEä°†èš£MICå’CEL

æ-éf”æ€çšç”µè-ä†°äŽ,æ-¶éf½éç,,è£...ä°†MICå€,æ¼è-ä¹|ç”±å...¶ä,ä,€ä,ªæ€çš’å^¶é€ CAè-  
SHA2ã€CAP-RTP-001æ^-CAP-RTP-

002è-ä¹|ç¾¾ç½²ã€,å½”ç”µè-æ-ä¾»æ¼è-ä¹|æ-¶i¼CEä¼šè-æ~Žå®fæ-æœ%åæ^çš,,Cisco

å-ä,€æ-¹éç¼CELSCç”±ç®çç†å~æœ%åæ,,å®%åè£...åœ”ç”µè-ä,š¼CEå¹¶ç”±CUCMå’å,fæœ-  
VPNé...ç½®ä,°ä»...äç;ä»»ç”±å²çŸŸCAPFè-ä¹|éç-å’æœ°æž,,éç-å’çš,,LSCã€,åÿ°ä°ŽLSCè€CEä,ç

é...ç½®

ç½’ç»œæ<“æ%”

æœ-æ-†æ;fä½ç””ä°†ä»Ÿä, <CUCMå®žéªCEæœ-åŠjå™”i¼š

- ao115pub - 10.122.138.102 - CUCMå’å,fæœ-åŠjå™”å’GETFTPæœ-åŠjå™”
- ao115sub - 10.122.138.103 - CUCMç””æ^å’GETFTPæœ-åŠjå™”

ç;®è®¼CAPFè-ä¹|å°šæœªèçæœÿi¼CEå¹¶ä,”åœ”èçæœÿä,ä¼šèçæœÿã€,å¼è^å°Cisco  
Unified OS Administration > Security > Certificate Managementi¼CEç,,¶ā Žä¼è^å°Find  
Certificate Listi¼CEå...¶ä,è-ä¹|æ£åŸ½æ-CAPFi¼CEål,å¾¾æ%åçœ°ã€,

Certificate List

https://10.122.138.102/cmplatform/certificateFindList.do

**Cisco Unified Operating System Administration**  
For Cisco Unified Communications Solutions

administrator

Show Settings Security Software Upgrades Services Help

Certificate List

Generate Self-signed Upload Certificate/Certificate chain Generate CSR

Status

1 records found

Certificate List (1 - 1 of 1)

Find Certificate List where Certificate is exactly CAPF Find Clear Filter

Certificate	Common Name	Type	Key Type	Distribution	Issued By	Expiration	
CAPF	<a href="#">CAPF-7f0ae8d7</a>	Self-signed	RSA	ao115pub	CAPF-7f0ae8d7	11/20/2021	Self-sign

Generate Self-signed Upload Certificate/Certificate chain Generate CSR

Common Name Certificate Details Certificate File Data

Validity From To Validity

Certificate Details(Self-signed) - Mozilla Firefox

https://10.122.138.102/cmplatform/certificateEdit.do?cert=/usr/local/cm/.security/CAPF/certs/CAPF.pem/CAPF.

### Certificate Details for CAPF-7f0ae8d7, CAPF

Regenerate
 Generate CSR
 Download .PEM File
 Download .DER File

**Status**

Status: Ready

**Certificate Settings**

File Name	CAPF.pem
Certificate Purpose	CAPF
Certificate Type	certs
Certificate Group	product-cm
Description(friendly name)	Self-signed certificate generated by system

**Certificate File Data**

```
[
Version: V3
Serial Number: 64F2FE613B79C5D362E26DAB4A8B761B
Signature Algorithm: SHA256withRSA (1.2.840.113549.1.1.11)
Issuer Name: L=Boxborough, ST=MA, CN=CAPF-7f0ae8d7, OU=TAC, O=Cisco Systems, C=US
Validity From: Mon Nov 21 15:49:43 EST 2016
          To: Sat Nov 20 15:49:42 EST 2021
Subject Name: L=Boxborough, ST=MA, CN=CAPF-7f0ae8d7, OU=TAC, O=Cisco Systems, C=US
Key: RSA (1.2.840.113549.1.1.1)
Key value:
3082010a0282010100c39c51d51eadb8216af79a1b231ce42896cf13fd23293f32a2f0baea679e5fa1ac5
bb58fcf015c179272e4f470ec06900667997de25c7bc61653d4302c8adc4022bb2bee47f9a7b56adfd5c5
4770f41f06bf5e4621e2a8233146a7fccd40d55704cd73a03a44f5b674cbec81e33c06d5d44e358db4b8
9710b4c022bc4357a1a064df9e8e02e9feb00213f0c0bd8bde9a363d6afcf162c20a86561d3e87acad8b
02cf079b01cfa3afdd12197bc115cb478202d41b5389dc0b8676c61011d73eb3f1e2bf3f204a4da2f753a
c2d88b1a5ab759abdb4453eda89713592dde471c23884dc738c7ed2f1c6d0b393678cec88d1bad2746d
]
```

al,æžœCAPFè-ä¹|å²è¿†æœÿæ^-å³å°†è¿†æœÿi¼CEè·é†æ-°ç"ÿæ^è-¥è-ä¹|ã€è·å¿½¿ç"å  
 åCEæ·i¼CEå|,æžœæ,éœèè|èè®©ç¬¬ä,%æ-¹è-ä¹|éçåå'æœ°æž,,ç¾¿½²CAPFè-ä¹|i¼CEå^™

è!å'Si¼šå!,æžœåœ"CAPFæœåš;æ¿æ»å'CEå-åš"æ—¶é†æ-°ç"ÿæ^CAPFè-ä¹|æ^-å  
 Bug ID [CSCue55353 å€"](#)  
[é†æ-°ç"ÿæ^çµè-é†ç¾¿@çš,,TVS/CCM/CAPFè-ä¹|æ—¶æ»åš è!åš](#)

æ³æ, i¼šål, æžœCUCMç%œæ¬æ¬æCE SBDi¼CEâ™æ— è®œ, çš, CUCM é†ç¼¼æ~å | è  
8.0(1)ç%œâ Šæ›é«~ç%œæœ¬çš, ä, éf¨ â†ã€ , åœ¨ è¿™äºç%œæœ¬çš, CUCM ä, i¼CEITLæ¬æ:

åœ¨CUCMçš, æ—œæÿç%œæœ¬ä, i¼CEå¿...é¿é... ç½®æ·å ^æ¨jå¼çš, é†ç¼¼ä»¥æ¬æCE  
VPNå®çæ¬ç«è«ä»½éªCEè çš, ç"µèè«ä»½è ä¹çš, éšœçç ä€ ,

åœ¨CUCM é†ç¼¼ä, çš, æ%œæœ¬œ%œTFTPæœ äŠjå™¨ ä, Šè¿ è¿Eshow  
itlâ½ä»ä€ , è¬æ³æ, i¼CEITLæ¬æ»ç¿®åžžåCE...â«CAPFè ä¹ | ä€ ,

ä¼å¿, i¼CEä, çæ¬¬å®žªCECUCM Subscriber ao115subçš, show itlè¼"â¿çš, æ¬å½ª€ ,

æ³i¼šææ¬æ¬ä»ç, æœ%œä, €ä, ITLè®å½ªæç¿®i¼CEå...çŠÿè½ä, CAPFä€,

æ³i¼šål, æžœITLæ¬æ»ç²¿æœ%œCAPFæç¿®i¼CEè¬ç™»å½ªå^œCUCMå'ä, fè€...â¹ç¿®è®ä  
**Unified Serviceability > Tools > Service Activation > CUCM Publisher >  
Securityi¼CEç, çäžæ¿æ»Cisco Certificate Authority Proxy Function  
Serviceä€, å, æžœæœ äŠjå²äœç"¨ ä, æ,¨ åšåšæ¿æ'»i¼CEè¬å¼èªå^œCisco Unified  
Serviceability > Tools > Control Center - Feature Services > Server > CM  
Servicesi¼CEç, çäžæœ CUCM é†ç¼¼ä, çš, æ%œæœ¬œ%œTFTPæœ äŠjå™¨ ä, Šé¿æ¬å¬äŠ  
TFTPæœ äŠjå»¥é¿æ¬ç"ÿæ^ITLæ¬æ»ç, æ, æªª¬i¼CEè¬ç¿®ä¿æ, æœªæœ%œCisco  
Bug ID [CSCuj78330](#)ä€ ,**

æ³i¼šå®CEæ^å Ži¼CEåœ¨CUCM é†ç¼¼ä, çš, æ%œæœ¬œ%œTFTPæœ äŠjå™¨ ä, Šè¿ è¿Esh  
itlâ½ä»i¼CEä»¥ªCEè å½ª"å%œçš, CUCMå'ä, fæœ äŠjå™¨ CAPFè ä¹ | çžªœ¨å²åCE...

<#root>

ITL Record #:1

----

BYTEPOS TAG LENGTH VALUE

-----

1 RECORDLENGTH 2 727

2 DNSNAME 2

3 SUBJECTNAME 64 CN=CAPF-7f0ae8d7;OU=TAC;O=Cisco Systems;L=Boxborough;ST=MA;C=US

4 FUNCTION 2 CAPF

5 ISSUERNAME 64 CN=CAPF-7f0ae8d7;OU=TAC;O=Cisco Systems;L=Boxborough;ST=MA;C=US

6 SERIALNUMBER 16 64:F2:FE:61:3B:79:C5:D3:62:E2:6D:AB:4A:8B:76:1B

7 PUBLICKEY 270

8 SIGNATURE 256

11 CERTHASH 20 C3 E6 97 D0 8A E1 0B F2 31 EC ED 20 EC C5 BC 0F 83 BC BC 5E

12 HASH ALGORITHM 1 null

ITL Record #:2

----

BYTEPOS TAG LENGTH VALUE

-----

1 RECORDLENGTH 2 717

2 DNSNAME 2

3 SUBJECTNAME 59 CN=ao115pub;OU=TAC;O=Cisco Systems;L=Boxborough;ST=MA;C=US

4 FUNCTION 2 TVS

5 ISSUERNAME 59 CN=ao115pub;OU=TAC;O=Cisco Systems;L=Boxborough;ST=MA;C=US

6 SERIALNUMBER 16 6B:99:31:15:D1:55:5E:75:9C:42:8A:CE:F2:7E:EA:E8

7 PUBLICKEY 270

8 SIGNATURE 256

11 CERTHASH 20 05 9A DE 20 14 55 23 2D 08 20 31 4E B5 9C E9 FE BD 2D 55 87

12 HASH ALGORITHM 1 null

ITL Record #:3

----

BYTEPOS TAG LENGTH VALUE

-----

1 RECORDLENGTH 2 1680

2 DNSNAME 2

3 SUBJECTNAME 71 CN=ITLRECOVERY\_ao115pub;OU=TAC;O=Cisco Systems;L=Boxborough;ST=MA;C=US

4 FUNCTION 2 System Administrator Security Token

5 ISSUERNAME 71 CN=ITLRECOVERY\_ao115pub;OU=TAC;O=Cisco Systems;L=Boxborough;ST=MA;C=US

6 SERIALNUMBER 16 51:BB:2F:1C:EE:80:02:16:62:69:51:9A:14:F6:03:7E

7 PUBLICKEY 270

8 SIGNATURE 256

9 CERTIFICATE 963 DF 98 C1 DB E0 61 02 1C 10 18 D8 BA F7 1B 2C AB 4C F8 C9 D5 (SHA1 Hash HEX)

This etoken was not used to sign the ITL file.

ITL Record #:4

----

BYTEPOS TAG LENGTH VALUE

-----

1 RECORDLENGTH 2 717

2 DNSNAME 2

3 SUBJECTNAME 59 CN=ao115sub;OU=TAC;O=Cisco Systems;L=Boxborough;ST=MA;C=US  
4 FUNCTION 2 TVS  
5 ISSUENAME 59 CN=ao115sub;OU=TAC;O=Cisco Systems;L=Boxborough;ST=MA;C=US  
6 SERIALNUMBER 16 65:E5:10:72:E7:F8:77:DA:F1:34:D5:E3:5A:E0:17:41  
7 PUBLICKEY 270  
8 SIGNATURE 256  
11 CERTHASH 20 00 44 54 42 B4 8B 26 24 F3 64 3E 57 8D 0E 5F B0 8B 79 3B BF  
12 HASH ALGORITHM 1 null

ITL Record #:5

----

BYTEPOS TAG LENGTH VALUE

-----

1 RECORDLENGTH 2 1652  
2 DNSNAME 2  
3 SUBJECTNAME 59 CN=ao115sub;OU=TAC;O=Cisco Systems;L=Boxborough;ST=MA;C=US  
4 FUNCTION 2 System Administrator Security Token  
5 ISSUENAME 59 CN=ao115sub;OU=TAC;O=Cisco Systems;L=Boxborough;ST=MA;C=US  
6 SERIALNUMBER 16 48:F7:D2:F3:A2:66:37:F2:DD:DF:C4:7C:E6:B9:CD:44  
7 PUBLICKEY 270  
8 SIGNATURE 256  
9 CERTIFICATE 959 20 BD 40 75 51 C0 61 5C 14 0D 6C DB 79 E5 9E 5A DF DC 6D 8B (SHA1 Hash HEX)  
This etoken was used to sign the ITL file.

ITL Record #:6

----

BYTEPOS TAG LENGTH VALUE

-----

1 RECORDLENGTH 2 1652  
2 DNSNAME 2  
3 SUBJECTNAME 59 CN=ao115sub;OU=TAC;O=Cisco Systems;L=Boxborough;ST=MA;C=US  
4 FUNCTION 2 TFTP  
5 ISSUENAME 59 CN=ao115sub;OU=TAC;O=Cisco Systems;L=Boxborough;ST=MA;C=US  
6 SERIALNUMBER 16 48:F7:D2:F3:A2:66:37:F2:DD:DF:C4:7C:E6:B9:CD:44  
7 PUBLICKEY 270  
8 SIGNATURE 256  
9 CERTIFICATE 959 20 BD 40 75 51 C0 61 5C 14 0D 6C DB 79 E5 9E 5A DF DC 6D 8B (SHA1 Hash HEX)

ITL Record #:7

----

BYTEPOS TAG LENGTH VALUE

-----

1 RECORDLENGTH 2 1031  
2 DNSNAME 9 ao115sub  
3 SUBJECTNAME 62 CN=ao115sub-EC;OU=TAC;O=Cisco Systems;L=Boxborough;ST=MA;C=US  
4 FUNCTION 2 TFTP  
5 ISSUENAME 62 CN=ao115sub-EC;OU=TAC;O=Cisco Systems;L=Boxborough;ST=MA;C=US  
6 SERIALNUMBER 16 53:CC:1D:87:BA:6A:28:BD:DA:22:B2:49:56:8B:51:6C  
7 PUBLICKEY 97  
8 SIGNATURE 103  
9 CERTIFICATE 651 E0 CF 8A B3 4F 79 CE 93 03 72 C3 7A 3F CF AE C3 3E DE 64 C5 (SHA1 Hash HEX)

The ITL file was verified successfully.

åö"CAPFæ;ç>®èç«ç;®è®²ä,°ITLæ;ç>®åŽi¼Œæ,"å"ä»¥åœ"ç"µè"ä,Šå®Œæ^è"ä¹|æ"ä  
Stringè"ä»½éªŒè"å®%è£...2048ä½ŒRSAè"ä¹|ã€,

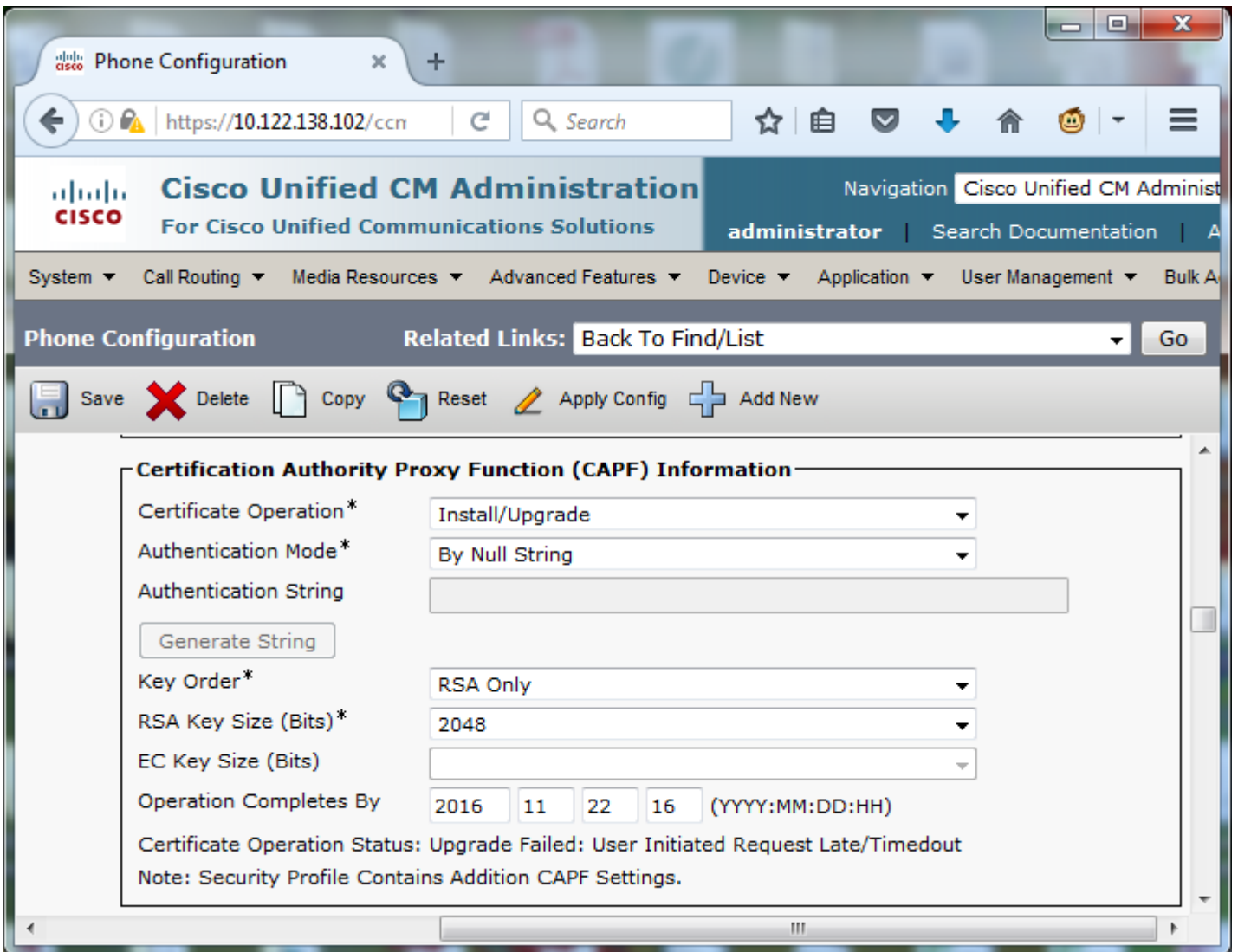
åö"ç"µ"ä,Ši¼ŒéªŒè"æ~"å|,å"šæœªå®%è£...LSCi¼Œå|,å¾æ%œç²ªã€,"ä¾¼<å|,i¼Œæœ"79XXç³»ä  
4 â€" å®%å...é...ç½®> 4 - LSCã€,



æ%“â¼€ç”â ¢çš,,ç”µè ¢é...¢½@éjµé ¢çã€„â¼è^â^ Cisco Unified  
 CMç@;ç¢†>è@¾â¤#>ç”µè ¢ã€„

â°†ç;™ä°>è-!ç»†ä;æ ¢è¾¼â...¥â^ç”µè ¢é...¢½@çš,,CAPF  
 Informationéf” â^†i¼CEâ |,â¾æ%œç¤°i¼š

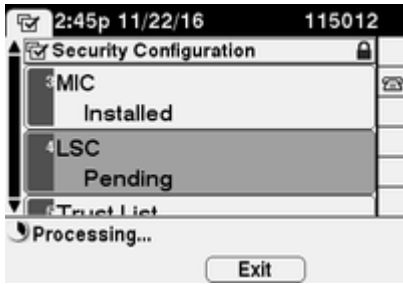
- â¼â°Žè ¢â¼ |æ” ¢ä½œi¼CEè ¢é€%œœ©â@%è£.../â ¢†ç°š
- â¼â°Žè«â»½éªCEè ¢æ” jâ¼¢i¼CEé€%œœ©By Null String
- âœ”æœ-â¾¼<â j¼CEâ°†Key Orderâ€¢RSA Key Size(Bits)â¼CEC Key  
 Size(Bits)è@¾ç½@â,°ç³»ç»Ýé»~è@¤â€¼ã€„
- â¼â°Žâ€œâ¥â ¢â@CEæ ¢æ—¶é—â€¢i¼CEè ¢è¾¼â...¥è†¾â°âœ”â,€â° ¢æ—¶â¼â ¢Žçš,,æ—¥œ



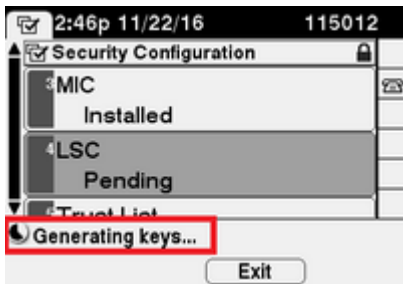


Apply Config

Processing...



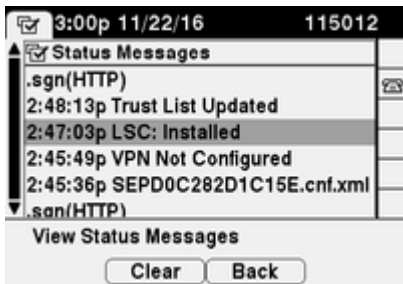
Generating keys...



Select Security Setting



Status Messages



é<sup>a</sup>CEè

æFâ, èç èjCEã

Cisco Unified Communications

Managerç%o^æœ-11.0(1)â@%oâ...æCE†â çš,ç”ÿæ^CAPFæŠ¥âŠéf^â†ã€,æ^-è€...i¼CEæ,“â»¥ä½ç”

èl❖èž·â❖-ç"µè-❖ä,â®%è£...çš,,LSCè-❖ä¹|çš,,â%o-æœ-i¼Œè-·â❖,é~...â!,â½·â»ŽCisco  
IPç"â-❖æfçç'cè-❖ä¹|æ-†ç«ã€,

## æ•...ésœæŽ'é™α

æœ-éf·â^†æ❖❖ä¾â°tâ❖-ç"·"·â°žâ¹é...❖ç½®èç;èjŒæ•...ésœæŽ'é™αçš,,äçjæ❖-ã€,

## æ— æœ%œ^ CAPF æœ❖âšjâ™"

LSCâ®%è£...â±±è ¥ã€,ç'â❖çš,,Status Messagesæ~¾ç±°No valid CAPF  
serverã€,èç™èj"·æ~ŽITLæ-†â»¶â,æ²jæœ%CAPFæ❖jç>®ã€,æfçéè³ŒCAPFæœ❖âšjæ~â❖|â²æç€æ'»i¼Œçç

## LSCi¼šèçžæŽ¥â±±è ¥

LSCâ®%è£...â±±è ¥ã€,ç'â❖çš,,çš¶æ€❖æ¶^æ❖-æ~¾ç±°LSCi¼šèçžæŽ¥â±±è ¥ã€,èç™æ❖-èf½èj"·ç±°â»¶

- ITLæ-†â»¶â,çš,,CAPFè-❖ä¹|ä,žâ½"â%o❖è-❖ä¹|ä,❖âŒ¹é...❖i¼ŒŒCAPFæœ❖âšjæfâœ"·â½çç"·ä,â
- CAPFæœ❖âšjâ²â❖œæçæ^-â❖œçç"·ã€,
- ç"â❖æ— æ³·éçšèçç½çç»œè®çé—®CAPFæœ❖âšjã€,

é³Œè-❖CAPFæœ❖âšjæ~â❖|â²æç€æ'»i¼ŒŒèççæ-°â❖-âš"·CAPFæœ❖âšj¼ŒŒèççæ-°â❖-âš"·TFTP

## LSCi¼šâ±±è ¥

LSCâ®%è£...â±±è ¥ã€,ç'â❖çš,,çš¶æ€❖æ¶^æ❖-æ~¾ç±°LSCi¼šâ±±è ¥ã€,âœççâ❖é...❖ç½®â€❖ç½éç

## LSCi¼šæ"❖â½œæŒ,èµ·

LSCâ®%è£...â±±è ¥ã€,ç'â❖çš,,çš¶æ€❖æ¶^æ❖-æ~¾ç±°LSCi¼šèçžæŽ¥â±±è ¥ã€,âœççâ❖é...❖ç½®â€

- ç"â❖❖ä,šçš,,ITLä,žæ·æ❖,TFTPæœ❖âšjâ™"·ä,šâ½"â%o❖â½çç"·çš,,ITLä,❖â❖Œã€,
- ITLæ❖ÿâ❖❖çš,,é—®éç~ã€,â❖'ç"·ÿèç™çš❖æf...â†µæ—¶i¼ŒŒè®¾â±±âž»â...¶â❖—äçjâ»  
reset  
localkeyâ½â»¶¼ŒŒâ¼â^¶ç"·â❖çž°âœ"·â½çç"·ITLRecoveryè-❖ä¹|ã€,â¹|,æžœé†ç¾â±±,,â°žæ·â❖  
ctl reset  
localkeyã€,æžÿä,æ❖¶i¼ŒŒæ,·â°†çœçâ^°ä,çä,çç±°â¾i¼ŒŒè-æ~žæ,·â°❖è·â»žCUCMçš,,CLiæÿçç  
itl reset  
localkeyâ½â»æ—¶â†çž°é"™è-¼ŒŒâ½†æ,·çœçâ^°ç-â°Œä,æ"™è-¼ŒŒâ^™èç™â❖-èf½æ~æ€❖çš'â  
[CSCus33755çš,,ç¼°é™](#).ã€,çj®è®CUCMçš,,ç%o^æœ-æ~â❖|â❖—â^°â½±â"❖ã€,

```
admin:show itl
Length of ITL file: 0
ITL File not found. To generate an ITL file, activate or restart the Cisco TFTP service as this
servers.
Error parsing the ITL File.
```

```
admin:utils itl reset localkey
Enter CCM Administrator password :
```

Locating active Tftp servers in the cluster.....

Unable to determine the active and running TFTP nodes in the cluster
Ensure that the DB replication is working on all nodes and the correct Password has been entered
Then retry the command

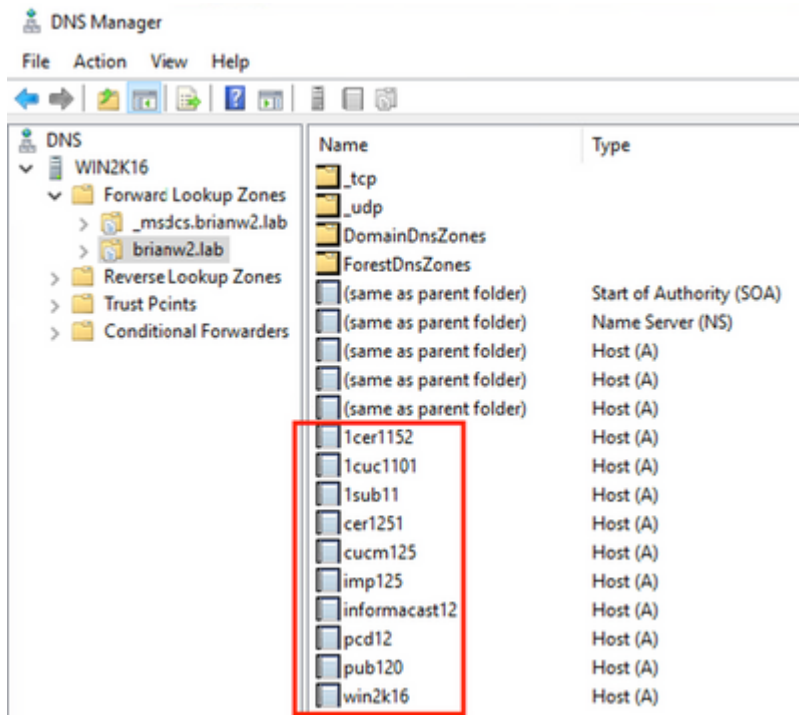
Executed command unsuccessfully
chmod: changing permissions of /var/log/active/cm/trace/dbl/sdi/replication\_scripts\_output

- 1cer1152
- 1cuc1101
- 1sub11
- cer1251
- cucm125
- imp125
- informacast12
- pcd12
- pub120
- win2k16

Operation Status: Operation Pending

- 1cer1152
- 1cuc1101
- 1sub11
- cer1251
- cucm125
- imp125
- informacast12
- pcd12
- pub120
- win2k16

Operation Status: Operation Pending



Operation Status: Operation Pending

**Certification Authority Proxy Function (CAPF) Information**

Certificate Operation\*

Authentication Mode\*


Authentication String

Key Order\*

RSA Key Size (Bits)\*

EC Key Size (Bits)

Operation Completes By     (YYYY:MM:DD:HH)

Certificate Operation Status: Operation Pending 

Note: Security Profile Contains Addition CAPF Settings.

åœ·ç”p̄æžšâ^¶â°æ—¥âç—ä,ï¼Œæœ¨·â°†æÿÿè-çè½-ââ^â²é...ç½@çš,,DNSæœæšjâ™”âœ°â

```
0475 INF Mar 12 15:07:53.686410 dnsmasq[12864]: query[A] PUB11.brianw2.lab from 127.0.0.1
0476 INF Mar 12 15:07:53.686450 dnsmasq[12864]: forwarded PUB11.brianw2.lab to X.X.X.X
0477 INF Mar 12 15:07:53.694909 dnsmasq[12864]: forwarded PUB11.brianw2.lab to X.X.X.X
0478 INF Mar 12 15:07:53.695263 dnsmasq[12864]: reply PUB11.brianw2.lab is NXDOMAIN-IPv4
0479 INF Mar 12 15:07:53.695833 dnsmasq[12864]: query[A] PUB11.brianw2.lab from 127.0.0.1
0480 INF Mar 12 15:07:53.695865 dnsmasq[12864]: cached PUB11.brianw2.lab is NXDOMAIN-IPv4
0481 WRN Mar 12 15:07:53.697091 (12905:13036) JAVA-configmgr MQThread|NetUtil.traceIPv4DNSErrors:? - DNS
```

++ However, we see that the phone is not able to resolve the FQDN of the CUCM Publisher. This is because

```
0482 ERR Mar 12 15:07:53.697267 (12905:13036) JAVA-configmgr MQThread|cip.sec.TvsProperty:? - Failed to
```

++ Afterwards, we see the CAPF operation fail. This is expected because we do not have a DNS mapping for

```
0632 NOT Mar 12 15:07:55.760715 (12905:13036) JAVA-configmgr MQThread|cip.sec.CertificateProperty:? - Ce
0633 NOT Mar 12 15:07:55.761649 (322:17812) SECUREAPP-RCAPF_START_MODE: Start CAPF - mode:[1]([NULL_STR]
0634 NOT Mar 12 15:07:55.761749 (322:17812) SECUREAPP-CAPF_CLNT_INIT:CAPF clnt initialized
0635 NOT Mar 12 15:07:55.761808 (322:17812) SECUREAPP-CAPFClnt: SetDelayTimer - set with value <0>
0636 ERR Mar 12 15:07:55.761903 (322:17812) SECUREAPP-Sec create BIO - invalid parameter.
0637 ERR Mar 12 15:07:55.761984 (322:17812) SECUREAPP-SEC_CAPF_BIO_F: CAPF create bio failed
0638 ERR Mar 12 15:07:55.762040 (322:17812) SECUREAPP-SEC_CAPF_OP_F: CAPF operation failed, ret -7
0639 CRT Mar 12 15:07:55.863826 (12905:13036) JAVA-configmgr MQThread|cip.sec.CertificateProperty$1:? -
```

++ What we would expect to see is something similar to the following where DNS replies with the IP address

```
4288 INF Mar 12 16:34:06.162666 dnsmasq[12864]: query[A] PUB11.brianw2.lab from 127.0.0.1
4289 INF Mar 12 16:34:06.162826 dnsmasq[12864]: forwarded PUB11.brianw2.lab to X.X.X.X
4290 INF Mar 12 16:34:06.164908 dnsmasq[12864]: reply PUB11.brianw2.lab is X.X.X.X
4291 NOT Mar 12 16:34:06.165024 (12905:13036) JAVA-configmgr MQThread|cip.sec.TvsProperty:? - Resolve Tv
```

è·âé...ä,éçš,ç”µèçš¶æ€æ¶^æ-ï¼Œè-æžç”µèæ—æ³·èš£æžPUB11.brianw2.lab

# Status messages

Cisco IP Phone CP-8845 ( SEP682C7B5C2342 )

[14:05:42 03/15/21] DNS unknown IPv4 host PUB11.brianw2.lab  
[14:05:44 03/15/21] VPN not configured  
[14:05:44 03/15/21] DNS unknown IPv4 host PUB11.brianw2.lab  
[11:13:25 03/16/21] SEP682C7B5C2342.cnf.xml.sgn(HTTP)  
[11:13:25 03/16/21] DNS unknown IPv4 host PUB11.brianw2.lab  
[11:13:27 03/16/21] VPN not configured  
**[11:13:27 03/16/21] DNS unknown IPv4 host PUB11.brianw2.lab**  
**[11:13:27 03/16/21] LSC: Connection failed**  
[11:13:50 03/16/21] LSC: Connection failed  
[11:14:10 03/16/21] LSC: Connection failed

è|èè€fè™'çš,,ç¼°é™·i¼š

Cisco Bug ID [CSCub62243](#) - LSCâ®%èè£...é—'æ‡æ€šâ±è ¥i¼€ç,,¶âžžâ†»ç»"CAPFæœèâš;â™"

è|èè€fè™'çš,,âçžâ¼°ç¼°é™·i¼š

æ€çš'æ¼æžID [CSCuz18034](#) â€"

éœ€èèæš¥â'šLSCâ®%èè£...çš,,ç»^ç«̄â»¥âšâ°æœÿçš¶æ€è

ç>â...³ä;æ

è;™â°æ-‡æ;ææä¼âä°tæœ%â...³âœ AnyConnect

VPNâ®çæ^ç«̄è°«â»½éª€èâ'€802.1Xè°«â»½éª€èçš,,âššâ,æ-‡â,â½ç" LSCçš,,è|ç»tâ;ææã

- [AnyConnect VPNç"â€â€ IPç"µèâ€ASAâ'€CUCMæ•...éšœæž'é™ª](#)
- [âÿ°âžžè«â»½çš,,ç½'ç»œæèâš;¼šâç" IEEE 802.1Xçš,,ç½'ç»œæçš,,IPç"µèéç" ç½²â'€é...ç½@æ€‡â—](#)

è;æœ%â, €çšèèç°šç±»âžçš,,LSCé...ç½®i¼€â...¶â,LSCèâ¹|ç"±ç¬â,‰œ-¹èâ¹|éçâæœ°

æœ%â...³è|ç»tâ;æi¼€è·â,é...CUCMç¬â,‰œ-¹CAç³âçš,,LSCç"ÿæ^â'€â¼â...¥é...ç½®ç

- [æš€æœæ"æâ'€æ-‡æ;æ - Cisco Systems](#)

## 关于此翻译

思科采用人工翻译与机器翻译相结合的方式将此文档翻译成不同语言，希望全球的用户都能通过各自的语言得到支持性的内容。

请注意：即使是最好的机器翻译，其准确度也不及专业翻译人员的水平。

Cisco Systems, Inc. 对于翻译的准确性不承担任何责任，并建议您总是参考英文原始文档（已提供链接）。