

Hoe u RADIUS-verificatie voor VPDN's configureren

Inhoud

[Inleiding](#)

[Voorwaarden](#)

[Vereisten](#)

[Gebruikte componenten](#)

[Conventies](#)

[Achtergrondinformatie](#)

[Configureren](#)

[Netwerkdigram](#)

[Serverconfiguraties](#)

[Routerconfiguratie](#)

[Verifiëren](#)

[Problemen oplossen](#)

[Opdrachten voor probleemoplossing](#)

[Debug Uitvoer](#)

[Gerelateerde informatie](#)

[Inleiding](#)

Een Virtual Private Dial-up Network (VPDN) stelt een netwerknop in service beschikbaar om over te slaan naar externe toegangsservers (gedefinieerd als de L2TP Access Concentrator [LAC]). Wanneer een Point-to-Point Protocol (PPP)-client in een LAC inbelt, bepaalt de LAC dat deze PPP-sessie naar een L2TP-netwerkserver (LNS) voor die client wordt doorgestuurd, die vervolgens de gebruiker voor verificatie vastlegt en de PPP-onderhandeling start. Zodra PPP de instelling is voltooid, worden alle frames via de LAC naar de client en de LNS verzonden.

Deze voorbeeldconfiguratie stelt u in staat om RADIUS-verificatie met VPDN's te gebruiken. De LAC vraagt de RADIUS-server, bepaalt welke LNS de gebruiker door te sturen en stelt de juiste tunnel in.

Voor meer informatie over VPDN's raadpleegt u het [begrip van VPDN](#).

[Voorwaarden](#)

[Vereisten](#)

Er zijn geen specifieke vereisten van toepassing op dit document.

[Gebruikte componenten](#)

De informatie in dit document is gebaseerd op de volgende software- en hardware-versies:

- Cisco Secure ACS UNIX versie 2.x.x en hoger of Merit RADIUS
- Cisco IOS® software release 11.2 en hoger

De informatie in dit document is gebaseerd op de apparaten in een specifieke laboratoriumomgeving. Alle apparaten die in dit document worden beschreven, hadden een opgeschoonde (standaard)configuratie. Als uw netwerk live is, moet u de potentiële impact van elke opdracht begrijpen.

[Conventies](#)

Raadpleeg voor meer informatie over documentconventies de [technische Tips](#) van [Cisco](#).

[Achtergrondinformatie](#)

In dit voorbeeld is de gebruiker "jsmith@hp.com" met het wachtwoord "test". Wanneer de "jsmith@hp.com" toetsen in de ISP-router, verstuurt de ISP-router "hp.com"-gebruikersnaam naar de RADIUS-server van de ISP. De ISP-server vindt de "hp.com"-gebruiker en verstuurt zijn tunnel-id ("isp"), het IP-adres van de HGW-router (10.31.1.50), het NAS-wachtwoord (Network Access Server) ("hallo") en het wachtwoord voor de gateway ("alweer") naar de ISP-router.

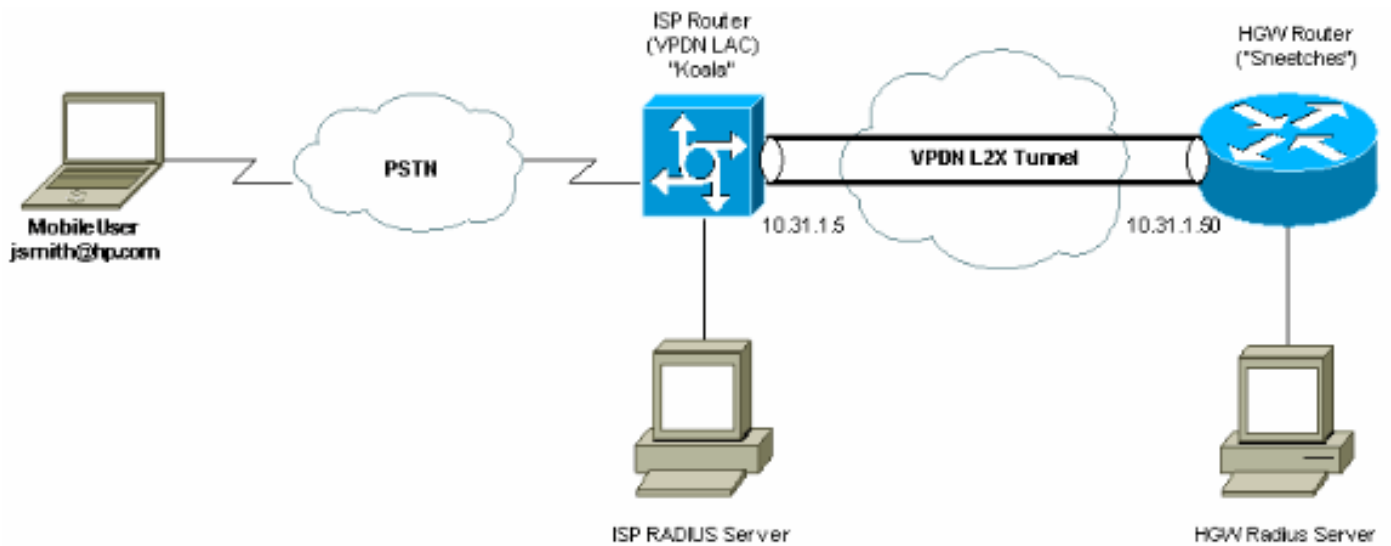
De ISP-router initieert een tunnel en sluit zich aan op de 10.31.1.50 HGW-router, die voor het eerst de "hp-gw"-gebruiker lokaal authentiek maakt en het wachtwoord voor de gebruiker "isp" ("hallo") doorstuurt naar de HGW RADIUS-server. Zodra de tunnels zijn geïnstalleerd, stuurt de ISP-router naar de HGW-router en wordt de gebruikersnaam ("jsmith@hp.com") en het wachtwoord ("test") van het gebruikersvenster in deze gebruiker geauthentiseerd op de HGW-server. In dit voorbeeld wordt de ISP router "Koala" genoemd en wordt de HGW router "nieetsen" genoemd.

[Configureren](#)

Deze sectie bevat informatie over het configureren van de functies die in dit document worden beschreven.

[Netwerkdigram](#)

Dit document gebruikt de netwerkinstellingen die in dit diagram worden weergegeven.



Serverconfiguratie

RADIUS-configuratie

```
!--- The RADIUS Server must support Cisco av-pairs. !--- This user is on the ISP RADIUS server.
hp.com Password = "cisco" Service-Type = Outbound-User, cisco-avpair = "vpdn:tunnel-id=isp",
cisco-avpair = "vpdn:ip-addresses=10.31.1.50", cisco-avpair = "vpdn:nas-password=hello", cisco-
avpair = "vpdn:gw-password=there" !--- The next two users are on the HGW Server. isp Password =
"hello", Service-Type = Framed, Framed-Protocol = PPP jsmith@hp.com Password = "test", Service-
Type = Framed, Framed-Protocol = PPP
```

Cisco Secure ACS UNIX 2.x.x configuratie

```
!--- This user is on the ISP server. # ./ViewProfile -p 9900 -u hp.com User Profile Information
user = hp.com{ profile_id = 86 profile_cycle = 1 RADIUS=Cisco { check_items= { 2="cisco" }
reply_attributes= { 9,1="vpdn:tunnel-id=isp" 9,1="vpdn:ip-addresses=10.31.1.50" 9,1="vpdn:NAS-
password=hello" 9,1="vpdn:gw-password=there" } } } !--- The next two users are on the HGW
Server. # ./ViewProfile -p 9900 -u isp User Profile Information user = isp{ profile_id = 70
profile_cycle = 1 RADIUS=Cisco { check_items= { 2="hello" } reply_attributes= { 6=2 7=1 } } } #
./ViewProfile -p 9900 -u jsmith@hp.com User Profile Information user = jsmith@hp.com{ profile_id
= 84 profile_cycle = 1 RADIUS=Cisco { check_items= { 2="test" } reply_attributes= { 6=2 7=1 } }
}
```

Routerconfiguratie

Configuratie van IP-router

```
koala#show running config

Building configuration...

Current configuration:
!
version 11.3
no service password-encryption
service udp-small-servers
service tcp-small-servers
```

```

!
hostname koala
!
aaa new-model
aaa authentication ppp default if-needed RADIUS
aaa authorization network default RADIUS
aaa accounting network default start-stop RADIUS
enable password ww
!
vpdn enable
!--- VPDN is enabled. ! interface Ethernet0 ip address
10.31.1.5 255.255.255.0 ! interface Serial0 shutdown !
interface Serial1 shutdown ! interface Async1 ip
unnumbered Ethernet0 encapsulation ppp async mode
dedicated no peer default ip address no cdp enable ppp
authentication chap ! ip default-gateway 10.31.1.1 no ip
classless ip route 0.0.0.0 0.0.0.0 10.31.1.1 logging
trap debugging logging 171.68.118.101 snmp-server
community public RW snmp-server enable traps config
snmp-server host 171.68.118.105 traps public RADIUS-
server host 171.68.120.194 auth-port 1645 acct-port 1646
RADIUS-server key cisco
!--- Specify RADIUS server information on the NAS. !
line con 0 password WW line 1 password WW autoselect ppp
modem InOut transport input all stopbits 1 speed 115200
flowcontrol hardware line 2 16 autoselect during-login
line aux 0 line vty 0 4 exec-timeout 0 0 password WW !
end

```

HGW-routerconfiguratie

```

Sneetches#show running config
Building configuration...

Current configuration:
!
version 11.3
no service password-encryption
service udp-small-servers
service tcp-small-servers
!
hostname Sneetches
!
aaa new-model
aaa authentication ppp default RADIUS local
aaa authorization network default RADIUS local
aaa accounting network default start-stop RADIUS
!
username hp-gw password 0 there
username isp password 0 hello
vpdn enable
!--- Enable VPDN. vpdn incoming isp hp-gw virtual-
template 1
!--- Specify the remote host (the network access server)
!--- the local name (the home gateway) to use for
authenticating !--- and the virtual template to use. !
interface Ethernet0 ip address 10.31.1.50 255.255.255.0
! interface Ethernet1 no ip address shutdown ! interface
Virtual-Template1
!--- Create a virtual template interface. ip unnumbered
Ethernet0
!--- Un-number the Virtual interface to an available LAN
interface. peer default ip address pool async

```

```
!--- Use the pool "async" to assign the IP address for
incoming connections. ppp authentication chap
!--- Use CHAP authentication for the incoming
connection. ! interface Serial0 shutdown ! interface
Serial1 shutdown ! ip local pool async 1.1.1.1 1.1.1.6
ip default-gateway 10.31.1.1 no ip classless ip route
0.0.0.0 0.0.0.0 10.31.1.1 RADIUS-server host
171.68.118.101 auth-port 1645 acct-port 1646
RADIUS-server timeout 20
RADIUS-server key cisco
!--- Specify RADIUS server information on the NAS. !
line con 0 exec-timeout 3600 0 line aux 0 line vty 0 4
password WW ! end
```

Verifiëren

Er is momenteel geen verificatieprocedure beschikbaar voor deze configuratie.

Problemen oplossen

Deze sectie bevat informatie waarmee u problemen met de configuratie kunt oplossen.

Opdrachten voor probleemoplossing

Bepaalde opdrachten worden ondersteund door het gereedschap Uitvoertolk, waarmee u een analyse van de opdrachtoutput kunt bekijken.

Opmerking: Voordat u **debug**-opdrachten afgeeft, raadpleegt u [Belangrijke informatie over debug-opdrachten](#).

- **debug van verificatie**—informatie over AAA/Terminal Access Control System Plus (TACACS+)-verificatie.
- **debug van autorisatie**—informatie over AAA/TACACS+ autorisatie wordt weergegeven.
- **debug PPP onderhandeling**-displays PPP-pakketten die tijdens PPP-opstarten worden verzonden, waar PPP-opties worden onderhandeld.
- **debug RADIUS**-displays gedetailleerde zuiveringsinformatie gekoppeld aan RADIUS.
- **debug VPDN fouten**-displays die verhinderen dat een PPP-tunnel wordt aangelegd of fouten die veroorzaken dat een ingestelde tunnel wordt gesloten.
- **debug VPDN gebeurtenissen**-displays over gebeurtenissen die deel uitmaken van de normale PPP-tunnelvestiging of shutdown.
- **debug vpdn l2f-fouten**—Hiermee wordt Layer 2-protocolfouten weergegeven die een Layer 2-instelling voorkomen of de normale werking ervan voorkomen.
- **debug vpdn l2f-gebeurtenissen**-displays over gebeurtenissen die deel uitmaken van de normale PPP-tunnelvestiging of shutdown voor Layer 2.
- **debug vpdn l2f-pakketten**-displays over Layer 2 het doorsturen van protocolkoppen en -status.
- **debug VPDN-pakketten**—Layer 2 Tunnel Protocol-fouten en gebeurtenissen die een onderdeel zijn van de normale tunnelinstelling of shutdown voor VPDN's.
- **debug Vsjabloon**-Hier wordt informatie over klonen voor een virtuele toegangsinterface weergegeven vanaf het moment dat het geluid van een virtuele sjabloon wordt gekloond tot het moment dat de virtuele toegangsinterface afloopt wanneer de oproep stopt.

Debug Uitvoer

IPS-router - goede debug

koala#show debug

General OS:

AAA Authentication debugging is on

AAA Authorization debugging is on

AAA Accounting debugging is on

VPN:

VPN events debugging is on

VPN errors debugging is on

RADIUS protocol debugging is on

koala#

%LINK-3-UPDOWN: Interface Async1, changed state to up

17:28:19: VPDN: Looking for tunnel -- hp.com --

17:28:19: AAA/AUTHEN: create_user (0x15D28C) user='hp.com' ruser='' port='Async1' rem_addr='' authn_type=NONE service=LOGIN priv=0

17:28:19: AAA/AUTHOR/VPDN (982041598): Port='Async1' list='default' service=NET

17:28:19: AAA/AUTHOR/VPDN: (982041598) user='hp.com'

17:28:19: AAA/AUTHOR/VPDN: (982041598) send AV service=ppp

17:28:19: AAA/AUTHOR/VPDN: (982041598) send AV protocol=vpdn

17:28:19: AAA/AUTHOR/VPDN (982041598) found list "default"

17:28:19: AAA/AUTHOR/VPDN: (982041598) Method=RADIUS

17:28:19: RADIUS: authenticating to get author data

17:28:19: RADIUS: Computed extended port value 0:1:

17:28:19: RADIUS: Initial Transmit id 62 171.68.120.194:1645, Access-Request, len 70

17:28:19: Attribute 4 6 0A1F0105

17:28:19: Attribute 5 6 00000001

17:28:19: Attribute 61 6 00000000

17:28:19: Attribute 1 8 68702E63

17:28:19: Attribute 2 18 8070079C

17:28:19: Attribute 6 6 00000005

17:28:19: RADIUS: Received from id 62 171.68.120.194:1645, Access-Accept, len 143

17:28:19: Attribute 26 26 0000000901147670

17:28:19: Attribute 26 36 00000009011E7670

17:28:19: Attribute 26 31 0000000901197670

17:28:19: Attribute 26 30 0000000901187670

!--- These messages can be decrypted using the OI tool. !--- As of Cisco IOS Software Release

12.2(11)T, !--- the output was changed to be readable. 17:28:19: RADIUS: saved authorization

data for user 15D28C at 10EE74 17:28:19: RADIUS: cisco AVPair "vpdn:tunnel-id=isp" 17:28:19:

RADIUS: cisco AVPair "vpdn:ip-addresses=10.31.1.50" 17:28:19: RADIUS: cisco AVPair "vpdn:nas-

password=hello" 17:28:19: RADIUS: cisco AVPair "vpdn:gw-password=there" 17:28:19: AAA/AUTHOR

(982041598): Post authorization status = PASS_ADD **17:28:19: AAA/AUTHOR/VPDN: Processing AV**

service=ppp

17:28:19: AAA/AUTHOR/VPDN: Processing AV protocol=vpdn

17:28:19: AAA/AUTHOR/VPDN: Processing AV tunnel-id=isp

17:28:19: AAA/AUTHOR/VPDN: Processing AV ip-addresses=10.31.1.50

17:28:19: AAA/AUTHOR/VPDN: Processing AV nas-password=hello

17:28:19: AAA/AUTHOR/VPDN: Processing AV gw-password=there

17:28:19: VPDN: Get tunnel info with NAS isp GW hp.com, IP 10.31.1.50

!--- The RADIUS server returns the attributes the !--- NAS should use for the tunnel. !---

Tunnel-id is "ISP" and the IP address of HGW is 10.31.1.50. 17:28:19: AAA/AUTHEN: free_user

(0x15D28C) user='hp.com' ruser='' port='Async1' rem_addr='' authn_type=NONE service=LOGIN

priv=0 17:28:19: VPDN: Forward to address 10.31.1.50 17:28:19: As1 VPDN: Forwarding... 17:28:19:

AAA/AUTHEN: create_user (0x15D334) user='jsmith@hp.com' ruser='' port='Async1' rem_addr='async'

authn_type=CHAP service=PPP priv=1 17:28:19: As1 VPDN: Bind interface direction=1 17:28:19: As1

VPDN: jsmith@hp.com is forwarded 17:28:19: AAA/ACCT/NET/START User jsmith@hp.com, Port Async1,

List "" 17:28:19: AAA/ACCT/NET: Found list "default" 17:28:19: RADIUS: Computed extended port

value 0:1: 17:28:19: RADIUS: Initial Transmit id 63 171.68.120.194:1646, Accounting-Request, len

93 17:28:19: Attribute 4 6 0A1F0105 17:28:19: Attribute 5 6 00000001 17:28:19: Attribute 61 6

```
00000000 17:28:19: Attribute 1 15 6A736D69 17:28:19: Attribute 40 6 00000001 17:28:19: Attribute
45 6 00000002 17:28:19: Attribute 6 6 00000002 17:28:19: Attribute 44 10 30303030 17:28:19:
Attribute 7 6 7670646E 17:28:19: Attribute 41 6 00000000 17:28:19: RADIUS: Received from id 63
171.68.120.194:1646, Accounting-response, len 20 %LINEPROTO-5-UPDOWN: Line protocol on Interface
Async1, changed state to up koala# !--- The user finishes and disconnects. %LINEPROTO-5-UPDOWN:
Line protocol on Interface Async1, changed state to down %LINK-5-CHANGED: Interface Async1,
changed state to reset 17:28:48: As1 VPDN: Cleanup 17:28:48: As1 VPDN: Reset 17:28:48: As1 VPDN:
Reset 17:28:48: As1 VPDN: Unbind interface 17:28:48: AAA/ACCT/NET/STOP User jsmith@hp.com, Port
Async1: task_id=20 start_time=900759730 timezone=UTC service=vpdn disc-cause=2 disc-cause-
ext=1011 pre-bytes-in=-226131998 pre-bytes-out=-1034130241 pre-paks-in=-63570 pre-paks-out=-
64410 bytes_in=1999 bytes_out=364 paks_in=29 paks_out=12 pre-session-time=5 elapsed_time=29
data-rate=0 xmit-rate=0 17:28:48: RADIUS: Computed extended port value 0:1: 17:28:48: RADIUS:
Initial Transmit id 64 171.68.120.194:1646, Accounting-Request, len 129 17:28:48: Attribute 4 6
0A1F0105 17:28:48: Attribute 5 6 00000001 17:28:48: Attribute 61 6 00000000 17:28:48: Attribute
1 15 6A736D69 17:28:48: Attribute 40 6 00000002 17:28:48: Attribute 45 6 00000002 17:28:48:
Attribute 6 6 00000002 17:28:48: Attribute 44 10 30303030 17:28:48: Attribute 7 6 7670646E
17:28:48: Attribute 49 6 00000002 17:28:48: Attribute 42 6 000007CF 17:28:48: Attribute 43 6
0000016C 17:28:48: Attribute 47 6 0000001D 17:28:48: Attribute 48 6 0000000C 17:28:48: Attribute
46 6 0000001D 17:28:48: Attribute 41 6 00000000 17:28:48: RADIUS: Received from id 64
171.68.120.194:1646, Accounting-response, len 20 %LINK-3-UPDOWN: Interface Async1, changed state
to down 17:28:51: AAA/AUTHEN: free_user (0x15D334) user='jsmith@hp.com' ruser='' port='Async1'
rem_addr='async' authen_type=CHAP service=PPP priv=1 koala#
```

[HGW-router - goed defect](#)

Sneetches#**show debug**

General OS:

AAA Authentication debugging is on

AAA Authorization debugging is on

AAA Accounting debugging is on

VPN:

VPN events debugging is on

VPN errors debugging is on

RADIUS protocol debugging is on

Sneetches#

```
17:28:21: AAA/AUTHEN: create_user (0x14A914) user='hp-gw' ruser='' port=''
rem_addr='' authen_type=CHAP service=PPP priv=1
```

```
17:28:21: AAA/AUTHEN/START (496523999): port='' list='default'
action=SENDAUTH service=PPP
```

```
17:28:21: AAA/AUTHEN/START (496523999): found list default
```

```
17:28:21: AAA/AUTHEN/START (496523999): Method=RADIUS
```

```
17:28:21: RADIUS: SENDPASS not supported (action=4)
```

```
17:28:21: AAA/AUTHEN (496523999): status = ERROR
```

```
17:28:21: AAA/AUTHEN/START (496523999): Method=LOCAL
```

```
17:28:21: AAA/AUTHEN (496523999): status = PASS
```

```
17:28:21: AAA/AUTHEN: free_user (0x14A914) user='hp-gw' ruser='' port=''
rem_addr='' authen_type=CHAP service=PPP priv=1
```

```
17:28:21: AAA/AUTHEN: create_user (0x14A914) user='isp' ruser='' port=''
rem_addr='' authen_type=CHAP service=PPP priv=1
```

```
17:28:21: AAA/AUTHEN/START (3095573082): port='' list='default'
action=SENDAUTH service=PPP
```

```
17:28:21: AAA/AUTHEN/START (3095573082): found list default
```

```
17:28:21: AAA/AUTHEN/START (3095573082): Method=RADIUS
```

```
17:28:21: RADIUS: SENDPASS not supported (action=4)
```

```
17:28:21: AAA/AUTHEN (3095573082): status = ERROR
```

```
17:28:21: AAA/AUTHEN/START (3095573082): Method=LOCAL
```

```
17:28:21: AAA/AUTHEN (3095573082): status = PASS
```

```
17:28:21: AAA/AUTHEN: free_user (0x14A914) user='isp' ruser='' port=''
rem_addr='' authen_type=CHAP service=PPP priv=1
```

```
17:28:21: AAA/AUTHEN: create_user (0x14ADB4) user='isp' ruser='' port=''
rem_addr='' authen_type=CHAP service=PPP priv=1
```

```
17:28:21: AAA/AUTHEN/START (3506257139): port='' list='default'
action=LOGIN service=PPP
```

17:28:21: AAA/AUTHEN/START (3506257139): found list default
17:28:21: AAA/AUTHEN/START (3506257139): Method=RADIUS
17:28:21: RADIUS: Initial Transmit id 53 171.68.118.101:1645, Access-Request, len 68
17:28:21: Attribute 4 6 0A1F0132
17:28:21: Attribute 61 6 00000000
17:28:21: Attribute 1 5 69737003
17:28:21: Attribute 3 19 10C82B7A
17:28:21: Attribute 6 6 00000002
17:28:21: Attribute 7 6 00000001
17:28:21: RADIUS: Received from id 53 171.68.118.101:1645, Access-Accept, len 32
17:28:21: Attribute 6 6 00000002
17:28:21: Attribute 7 6 00000001
17:28:21: AAA/AUTHEN (3506257139): status = PASS
17:28:21: VPDN: Chap authentication succeeded for isp
17:28:21: AAA/AUTHEN: free_user (0x14ADB4) user='isp' ruser='' port='' rem_addr=''
authen_type=CHAP service=PPP priv=1
17:28:21: Vi1 VPDN: Virtual interface created for jsmith@hp.com
17:28:21: Vi1 VPDN: Set to Async interface
17:28:21: Vi1 VPDN: Clone from Vtemplate 1 filterPPP=0 blocking
%LINK-3-UPDOWN: Interface Virtual-Access1, changed state to up
17:28:23: Vi1 VPDN: Bind interface direction=2
17:28:23: Vi1 VPDN: PPP LCP accepted sent & rcv CONFACK
17:28:23: AAA/AUTHEN: create_user (0x143368) user='jsmith@hp.com' ruser=''
port='Virtual-Access1' rem_addr='async' authen_type=CHAP service=PPP priv=1
17:28:23: AAA/AUTHEN/START (637397616): port='Virtual-Access1' list=''
action=LOGIN service=PPP
17:28:23: AAA/AUTHEN/START (637397616): using "default" list
17:28:23: AAA/AUTHEN/START (637397616): Method=RADIUS
17:28:23: RADIUS: Computed extended port value 0:60100:
17:28:23: RADIUS: Initial Transmit id 54 171.68.118.101:1645, Access-Request, len 78
17:28:23: Attribute 4 6 0A1F0132
17:28:23: Attribute 5 6 0000EAC4
17:28:23: Attribute 1 15 6A736D69
17:28:23: Attribute 3 19 186C2AC9
17:28:23: Attribute 6 6 00000002
17:28:23: Attribute 7 6 00000001
17:28:23: RADIUS: Received from id 54 171.68.118.101:1645, Access-Accept, len 32
17:28:23: Attribute 6 6 00000002
17:28:23: Attribute 7 6 00000001
17:28:23: AAA/AUTHEN (637397616): status = PASS
17:28:23: AAA/AUTHOR/LCP Vi1: Authorize LCP
17:28:23: AAA/AUTHOR/LCP Vi1 (1528831370): Port='Virtual-Access1' list=''
service=NET
17:28:23: AAA/AUTHOR/LCP: Vi1 (1528831370) user='jsmith@hp.com'
17:28:23: AAA/AUTHOR/LCP: Vi1 (1528831370) send AV service=ppp
17:28:23: AAA/AUTHOR/LCP: Vi1 (1528831370) send AV protocol=lcp
17:28:23: AAA/AUTHOR/LCP (1528831370) found list "default"
17:28:23: AAA/AUTHOR/LCP: Vi1 (1528831370) Method=RADIUS
17:28:23: AAA/AUTHOR (1528831370): Post authorization status = PASS_REPL
17:28:23: AAA/AUTHOR/LCP Vi1: Processing AV service=ppp
17:28:23: AAA/ACCT/NET/START User jsmith@hp.com, Port Virtual-Access1, List ""
17:28:23: AAA/ACCT/NET: Found list "default"
17:28:23: AAA/AUTHOR/FSM Vi1: (0): Can we start IPCP?
17:28:23: AAA/AUTHOR/FSM Vi1 (4249637449): Port='Virtual-Access1' list=''
service=NET
17:28:23: AAA/AUTHOR/FSM: Vi1 (4249637449) user='jsmith@hp.com'
17:28:23: AAA/AUTHOR/FSM: Vi1 (4249637449) send AV service=ppp
17:28:23: AAA/AUTHOR/FSM: Vi1 (4249637449) send AV protocol=ip
17:28:23: AAA/AUTHOR/FSM (4249637449) found list "default"
17:28:23: AAA/AUTHOR/FSM: Vi1 (4249637449) Method=RADIUS
17:28:23: AAA/AUTHOR (4249637449): Post authorization status = PASS_REPL
17:28:23: AAA/AUTHOR/FSM Vi1: We can start IPCP
17:28:23: RADIUS: Computed extended port value 0:60100:
17:28:23: RADIUS: Initial Transmit id 55 171.68.118.101:1646, Accounting-Request,


```

len 87
17:28:23: Attribute 4 6 0A1F0132
17:28:23: Attribute 5 6 0000EAC4
17:28:23: Attribute 1 15 6A736D69
17:28:23: Attribute 40 6 00000001
17:28:23: Attribute 45 6 00000001
17:28:23: Attribute 6 6 00000002
17:28:23: Attribute 44 10 30303030
17:28:23: Attribute 7 6 00000001
17:28:23: Attribute 41 6 00000000
17:28:23: RADIUS: Received from id 55 171.68.118.101:1646, Accounting-response,
len 20
17:28:23: AAA/AUTHOR/IPCP Vi1: Start. Her address 0.0.0.0, we want 0.0.0.0
17:28:23: AAA/AUTHOR/IPCP Vi1: Processing AV service=ppp
17:28:23: AAA/AUTHOR/IPCP Vi1: Authorization succeeded
17:28:23: AAA/AUTHOR/IPCP Vi1: Done. Her address 0.0.0.0, we want 0.0.0.0
17:28:23: AAA/AUTHOR/IPCP Vi1: Start. Her address 0.0.0.0, we want 1.1.1.1
17:28:23: AAA/AUTHOR/IPCP Vi1: Processing AV service=ppp
17:28:23: AAA/AUTHOR/IPCP Vi1: Authorization succeeded
17:28:23: AAA/AUTHOR/IPCP Vi1: Done. Her address 0.0.0.0, we want 1.1.1.1
17:28:24: AAA/AUTHOR/IPCP Vi1: Start. Her address 1.1.1.1, we want 1.1.1.1
17:28:24: AAA/AUTHOR/IPCP Vi1 (923857566): Port='Virtual-Access1' list=''
service=NET
17:28:24: AAA/AUTHOR/IPCP: Vi1 (923857566) user='jsmith@hp.com'
17:28:24: AAA/AUTHOR/IPCP: Vi1 (923857566) send AV service=ppp
17:28:24: AAA/AUTHOR/IPCP: Vi1 (923857566) send AV protocol=ip
17:28:24: AAA/AUTHOR/IPCP: Vi1 (923857566) send AV addr*1.1.1.1
17:28:24: AAA/AUTHOR/IPCP (923857566) found list "default"
17:28:24: AAA/AUTHOR/IPCP: Vi1 (923857566) Method=RADIUS
17:28:24: AAA/AUTHOR (923857566): Post authorization status = PASS_REPL
17:28:24: AAA/AUTHOR/IPCP Vi1: Reject 1.1.1.1, using 1.1.1.1
17:28:24: AAA/AUTHOR/IPCP Vi1: Processing AV service=ppp
17:28:24: AAA/AUTHOR/IPCP Vi1: Processing AV addr*1.1.1.1
17:28:24: AAA/AUTHOR/IPCP Vi1: Authorization succeeded
17:28:24: AAA/AUTHOR/IPCP Vi1: Done. Her address 1.1.1.1, we want 1.1.1.1
%LINEPROTO-5-UPDOWN: Line protocol on Interface Virtual-Access1, changed state to up
Sneetches#
!--- The user finishes and disconnects. Sneetches# 17:28:50: Vi1 VPDN: Reset 17:28:50: Vi1
VPDN: Reset %LINK-3-UPDOWN: Interface Virtual-Access1, changed state to down 17:28:50: Vi1 VPDN:
Cleanup 17:28:50: Vi1 VPDN: Reset 17:28:50: Vi1 VPDN: Reset 17:28:50: Vi1 VPDN: Unbind interface
17:28:50: Vi1 VPDN: Reset 17:28:50: Vi1 VPDN: Reset 17:28:50: AAA/ACCT/NET/STOP User
jsmith@hp.com, Port Virtual-Access1: task_id=14 start_time=900759731 timezone=UTC service=ppp
protocol=ip addr=1.1.1.1 disc-cause=2 disc-cause-ext=1011 pre-bytes-in=0 pre-bytes-out=42 pre-
paks-in=0 pre-paks-out=2 bytes_in=882 bytes_out=356 paks_in=17 paks_out=11 pre-session-time=0
elapsed_time=27 data-rate=0 xmit-rate=0 17:28:50: RADIUS: Computed extended port value 0:60100:
17:28:50: RADIUS: Initial Transmit id 56 171.68.118.101:1646, Accounting-Request, len 129
17:28:50: Attribute 4 6 0A1F0132 17:28:50: Attribute 5 6 0000EAC4 17:28:50: Attribute 1 15
6A736D69 17:28:50: Attribute 40 6 00000002 17:28:50: Attribute 45 6 00000001 17:28:50: Attribute
6 6 00000002 17:28:50: Attribute 44 10 30303030 17:28:50: Attribute 7 6 00000001 17:28:50:
Attribute 8 6 01010101 17:28:50: Attribute 49 6 00000002 17:28:50: Attribute 42 6 00000372
17:28:50: Attribute 43 6 00000164 17:28:50: Attribute 47 6 00000011 17:28:50: Attribute 48 6
0000000B 17:28:50: Attribute 46 6 0000001B 17:28:50: Attribute 41 6 00000000 17:28:50: RADIUS:
Received from id 56 171.68.118.101:1646, Accounting-response, len 20 17:28:50: AAA/AUTHEN:
free_user (0x143368) user='jsmith@hp.com' ruser='' port='Virtual-Access1' rem_addr='async'
authen_type=CHAP service=PPP priv=1 %LINEPROTO-5-UPDOWN: Line protocol on Interface Virtual-
Access1, changed state to down Sneetches#

```

[Debugs voor mislukte verbinding met ISP-router](#)

```
koala#show debug
```

```
General OS:
```

```
AAA Authentication debugging is on
```

```
AAA Authorization debugging is on
```

```

AAA Accounting debugging is on
VPN:
VPN events debugging is on
VPN errors debugging is on
RADIUS protocol debugging is on
koala#
!--- Problem 1: !--- User hp.com is not in the ISP server: !--- There is no output on HGW router
because the call has not gone that far.

RADIUS: Received from id 83 171.68.120.194:1645, Access-Reject, len 20 18:43:18:
AAA/AUTHEN (4063976505): status = FAIL
!--- Problem 2: !--- User hp.com is not in the ISP server. !--- There is no output on HGW router
because !--- the call has not gone that far.

RADIUS: Received from id 83 171.68.120.194:1645, Access-Reject, len 20 18:43:18:
AAA/AUTHEN (4063976505): status = FAIL
!--- Problem 3: !--- Problem in tunnel definition on HGW router; in HGW configuration !--- vpdn
incoming hp-gw isp virtual-template 1 is inserted !--- instead of vpdn incoming isp hp-gw
virtual-template 1.

%VPDN-5-UNREACH: L2F HGW 10.31.1.50 is unreachable
VPDN: Timeout opening tunnel to 10.31.1.50
VPDN: Free busy address 10.31.1.50
!--- Problem 4: !--- User "isp" or "hp-gw" is removed from HGW router.

%VPDN-6-AUTHENFAIL: L2F NAS koala, authentication failure for tunnel hp-gw;
Invalid key
!--- Problem 5: !--- User "isp" is not in the HGW server.

%VPDN-6-AUTHENFAIL: L2F HGW , AAA authentication failure for tunnel hp-gw
!--- Problem 6: !--- User jsmith@hp.com is not in the HGW server.

%VPDN-6-AUTHENFAIL: L2F HGW hp-gw, AAA authentication failure for As1
user jsmith@hp.com; Authentication failure

```

Debugs voor mislukte verbindingen op HGW router

```

Sneetches#show debug
General OS:
AAA Authentication debugging is on
AAA Authorization debugging is on
AAA Accounting debugging is on
VPN:
VPN events debugging is on
VPN errors debugging is on
RADIUS protocol debugging is on
Sneetches#
!--- Problem 1: !--- Problem in tunnel definition on the HGW router; in HGW configuration !---
vpdn incoming hp-gw isp virtual-template 1 is inserted !--- instead of vpdn incoming isp hp-gw
virtual-template 1 !--- debug vpdn l2f-errors display.

19:25:27: L2F: Couldn't find tunnel named isp
19:25:30: L2F: Couldn't find tunnel named isp
!--- Problem 2: !--- User "isp" is removed from the HGW router.

AAA/AUTHEN (3372073334): SENDAUTH no password for isp
AAA/AUTHEN (3372073334): status = ERROR
AAA/AUTHEN/START (3372073334): no methods left to try
AAA/AUTHEN (3372073334): status = ERROR
AAA/AUTHEN/START (3372073334): failed to authenticate
!--- Problem 3: !--- User "hp-gw" is removed from the HGW router.

AAA/AUTHEN (3999868118): SENDAUTH no password for hp-gw

```

```
AAA/AUTHEN (3999868118): status = ERROR
AAA/AUTHEN/START (3999868118): no methods left to try
AAA/AUTHEN (3999868118): status = ERROR
AAA/AUTHEN/START (3999868118): failed to authenticate
!--- Problem 4: !--- User "isp" is removed from HGW RADIUS server.

RADIUS: Received from id 107 171.68.118.101:1645, Access-Reject, len 46
Attribute 18 26 41757468
AAA/AUTHEN (2759462034): status = FAIL
VPDN: Chap authentication failed for isp
%VPDN-6-AUTHENFAIL: L2F HGW , AAA authentication failure for tunnel isp
!--- Problem 5: !--- User "jsmith@hp.com" is not in the HGW server.

RADIUS: Received from id 109 171.68.118.101:1645, Access-Reject, len 46
Attribute 18 26 41757468
AAA/AUTHEN (2765235576): status = FAIL
%VPDN-6-AUTHENFAIL: L2F HGW hp-gw, AAA authentication failure for Vil
user jsmith@hp.com; Authentication failure
```

[Gerelateerde informatie](#)

- [Ondersteuning voor RADIUS-technologie](#)
- [Verzoeken om opmerkingen \(RFC's\)](#)
- [Cisco Secure UNIX-productondersteuningspagina](#)
- [Technische ondersteuning - Cisco-systemen](#)