

백업 인터페이스를 사용하는 BRI ISDN 백업

목차

[소개](#)

[사전 요구 사항](#)

[요구 사항](#)

[사용되는 구성 요소](#)

[표기 규칙](#)

[구성](#)

[네트워크 다이어그램](#)

[구성](#)

[다음을 확인합니다.](#)

[문제 해결](#)

[문제 해결 명령](#)

[관련 정보](#)

[소개](#)

이 문서에서는 ISDN 백업을 위한 샘플 컨피그레이션을 제공하며 이 유형의 컨피그레이션에 대한 기본 트러블슈팅 정보를 제공합니다.

ISDN 백업의 가장 일반적인 구현 및 비교 방법에 대한 자세한 내용은 다음 문서를 참조하십시오. [DDR 백업을 위한 백업 인터페이스, 부동 고정 경로 및 다이얼러 감시 평가](#)

[사전 요구 사항](#)

[요구 사항](#)

이 문서에 대한 특정 요건이 없습니다.

[사용되는 구성 요소](#)

이 문서의 정보는 아래 소프트웨어 및 하드웨어 버전을 기반으로 합니다.

- Cisco IOS® Software 릴리스 12.2(3) 및 12.2(5)를 실행하는 Cisco 2500 라우터(Frame Relay data terminal equipment [DTE]) 2개
- Frame Relay 스위치 역할을 하는 Cisco 4500 라우터 1대

이 문서의 정보는 특정 랩 환경의 디바이스를 토대로 작성되었습니다. 이 문서에 사용된 모든 디바이스는 초기화된(기본) 컨피그레이션으로 시작되었습니다. 라이브 네트워크에서 작업하는 경우, 사용하기 전에 모든 명령의 잠재적인 영향을 이해해야 합니다.

표기 규칙

문서 규칙에 대한 자세한 내용은 [Cisco 기술 팁 표기 규칙](#)을 참조하십시오.

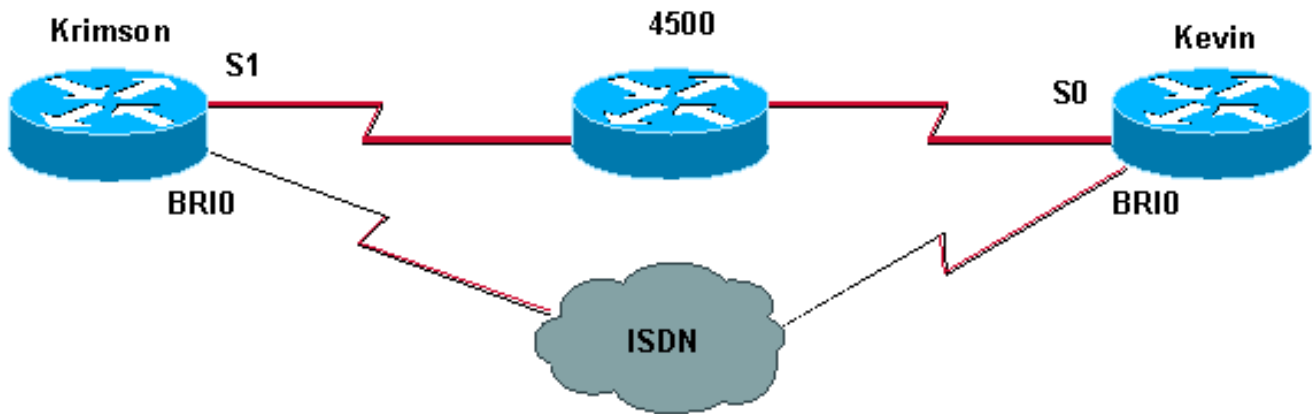
구성

이 섹션에는 이 문서에서 설명하는 기능을 구성하기 위한 정보가 표시됩니다.

참고: 이 문서에 사용된 명령에 대한 추가 정보를 찾으려면 [명령 조회 도구](#)([등록된](#) 고객만 해당)를 사용합니다.

네트워크 다이어그램

이 문서에서는 아래 다이어그램에 표시된 네트워크 설정을 사용합니다.



구성

이 문서에서는 아래 표시된 구성을 사용합니다.

krimson(Cisco 2500 라우터)

```
krimson#show running-config
Building configuration...

!
version 12.2
service timestamps debug datetime msec
service timestamps log datetime msec
!
hostname krimson
!
!
username kevin password 0 <password> !
isdn switch-type basic-net3
!
!
interface Loopback0
ip address 10.7.7.1 255.255.255.0
ip ospf network point-to-point
```

```
!  
interface Ethernet0  
ip address 10.200.16.30 255.255.255.0  
!  
interface Serial1  
bandwidth 64  
no ip address  
encapsulation frame-relay  
no ip route-cache  
no ip mroute-cache  
!  
interface Serial1.1 point-to-point  
backup interface Dialer0  
ip address 10.5.5.2 255.255.255.0  
no ip route-cache  
frame-relay interface-dlci 20  
!  
interface BRI0  
description Testanschluss ISDN(intern), Nr. 4420038  
no ip address  
encapsulation ppp  
no ip route-cache  
no ip mroute-cache  
load-interval 30  
no keepalive  
dialer pool-member 1  
isdn switch-type basic-net3  
no fair-queue  
no cdp enable  
ppp authentication chap  
!  
interface Dialer0  
ip address 10.9.9.1 255.255.255.0  
encapsulation ppp  
no ip route-cache  
no ip mroute-cache  
dialer pool 1  
dialer remote-name kevin  
dialer string 6120  
dialer-group 1  
no cdp enable  
ppp authentication chap  
!  
router ospf 10  
log-adjacency-changes  
network 10.5.5.0 0.0.0.255 area 0  
network 10.7.7.0 0.0.0.255 area 0  
network 10.9.9.0 0.0.0.255 area 0  
!  
ip default-gateway 10.200.16.1  
no ip classless  
no ip http server  
!  
access-list 105 permit ip any host 10.7.7.1  
access-list 105 permit ip any host 10.8.8.1  
access-list 105 permit ip any any  
dialer-list 1 protocol ip permit  
!  
line con 0  
exec-timeout 0 0  
privilege level 15  
line aux 0  
transport input all  
line vty 0 4
```

```
exec-timeout 0 0
password <password> login
!
end
```

kevin(Cisco 2500 라우터)

```
kevin#show running-config
Building configuration...

version 12.2
service timestamps debug datetime msec
service timestamps log datetime msec
!
hostname kevin
!
!
username krimson password 0 <password> !
isdn switch-type basic-net3
!
!
interface Loopback0
ip address 10.8.8.1 255.255.255.0
ip ospf network point-to-point
!
interface Loopback1
ip address 172.19.0.1 255.255.255.255
!
interface Ethernet0
ip address 10.200.16.26 255.255.255.0
!
interface Serial0
no ip address
encapsulation frame-relay
!
interface Serial0.1 point-to-point
ip address 10.5.5.1 255.255.255.0
no cdp enable
frame-relay interface-dlci 20
!
interface BRI0
no ip address
encapsulation ppp
dialer pool-member 1
isdn switch-type basic-net3
no cdp enable
ppp authentication chap
!
interface Dialer0
ip address 10.9.9.2 255.255.255.0
encapsulation ppp
dialer pool 1
dialer remote-name krimson
dialer-group 1
no cdp enable
ppp authentication chap
!
router ospf 10
log-adjacency-changes
network 10.5.5.0 0.0.0.255 area 0
network 10.8.8.0 0.0.0.255 area 0
network 10.9.9.0 0.0.0.255 area 0
!
```

```

ip default-gateway 10.200.16.1
ip classless
!
dialer-list 1 protocol ip permit
no cdp run
!
line con 0
exec-timeout 0 0
line aux 0
modem InOut
line vty 0 4
exec-timeout 0 0
password <password> login
!
ntp clock-period 17180102
ntp server 10.200.20.134
end

```

다음을 확인합니다.

이 섹션에서는 컨피그레이션이 제대로 작동하는지 확인하는 데 사용할 수 있는 정보를 제공합니다.

다음 명령을 사용하여 컨피그레이션을 확인합니다.

특정 **show** 명령은 [출력 인터프리터 도구](#)에서 지원되므로 **show** 명령 출력의 분석을 볼 수 있습니다.

- **show interfaces serial** - DLCI(multicast data-link connection identifier), 인터페이스에서 사용되는 DLCI 및 LMI(Local Management Interface)에 사용되는 DLCI에 대한 정보를 표시합니다.
- **show interface dialer** - 다이얼러 인터페이스에 대한 정보를 표시합니다.
- **show ip route** - IP 라우팅 테이블 항목을 표시합니다.

```
krimson#show interface serial 1.1
```

```
! --- The initial state before the simulated Frame Relay network failure. ! --- The primary link
is up and functional. Serial1.1 is up, line protocol is up Hardware is HD64570 Internet address
is 10.5.5.2/24 Backup interface Dialer0, failure delay 0 sec, secondary disable delay 0 sec MTU
1500 bytes, BW 64 Kbit, DLY 20000 usec, reliability 255/255, txload 1/255, rxload 1/255
Encapsulation FRAME-RELAY krimson#show int dialer 0
```

```
! --- Initial state. The backup interface is in standby mode and inactive. Dialer0 is standby
mode (spoofing), line protocol is down (spoofing) Hardware is Unknown Internet address is
10.9.9.1/24 MTU 1500 bytes, BW 56 Kbit, DLY 20000 usec, reliability 255/255, txload 1/255,
rxload 1/255 Encapsulation PPP, loopback not set DTR is pulsed for 1 seconds on reset Last input
1w6d, output never, output hang never Last clearing of "show interface" counters 6w4d Input
queue: 0/75/0/0 (size/max/drops/flushes); Total output drops: 0 Queueing strategy: weighted fair
Output queue: 0/1000/64/0 (size/max total/threshold/drops) Conversations 0/1/16 (active/max
active/max total) Reserved Conversations 0/0 (allocated/max allocated) Available Bandwidth 42
kilobits/sec 5 minute input rate 0 bits/sec, 0 packets/sec 5 minute output rate 0 bits/sec, 0
packets/sec 596 packets input, 48924 bytes 600 packets output, 49280 bytes krimson#show ip route
```

```
Codes: C - connected, S - static, I - IGRP, R - RIP, M - mobile, B - BGP
D - EIGRP, EX - EIGRP external, O - OSPF, IA - OSPF inter area
N1 - OSPF NSSA external type 1, N2 - OSPF NSSA external type 2
E1 - OSPF external type 1, E2 - OSPF external type 2, E - EGP
i - IS-IS, L1 - IS-IS level-1, L2 - IS-IS level-2, ia - IS-IS inter area
* - candidate default, U - per-user static route, o - ODR
P - periodic downloaded static route
```

```
Gateway of last resort is 10.200.16.1 to network 0.0.0.0
```

```
192.168.64.0/30 is subnetted, 1 subnets
```

```
C 192.168.64.0 is directly connected, Dialer4
10.0.0.0/24 is subnetted, 6 subnets
O 10.9.9.0 [110/3347] via 10.5.5.1, 00:03:34, Serial1.1
O 10.8.8.0 [110/1563] via 10.5.5.1, 00:03:34, Serial1.1
! --- The route to the tested destination network points to the ! --- still-active primary link.
C 10.5.5.0 is directly connected, Serial1.1 C 10.7.7.0 is directly connected, Loopback0 C
10.9.8.0 is directly connected, Dialer1 C 10.200.16.0 is directly connected, Ethernet0 S*
0.0.0.0/0 [1/0] via 10.200.16.1
```

여기에서는 프레임 릴레이 인터페이스가 다운되는 것을 확인할 수 있습니다.

```
krimson#
*Apr 16 23:56:47.840: %LINK-3-UPDOWN: Interface Serial1,
changed state to down
*Apr 16 23:56:47.848: OSPF: Interface Serial1.1 going Down
! --- Here we have simulated a failure within the Frame Relay network. ! --- We can see what was
conducted to the Frame Relay DTE router, ! --- and the subinterface going down. *Apr 16
23:56:47.852: %OSPF-5-ADJCHG: Process 10, Nbr 172.19.0.1 on Serial1.1 from FULL to DOWN,
Neighbor Down: Interface down or detached *Apr 16 23:56:48.736: BACKUP(Serial1.1): event =
primary went down *Apr 16 23:56:48.740: BACKUP(Serial1.1): changed state to "waiting to backup"
*Apr 16 23:56:48.744: BACKUP(Serial1.1): event = timer expired *Apr 16 23:56:48.748: Di0 DDR is
shutdown, could not clear interface. *Apr 16 23:56:48.752: BACKUP(Serial1.1): secondary
interface (Dialer0) made active ! --- The configured backup interface is active. *Apr 16
23:56:48.752: BACKUP(Serial1.1): changed state to "backup mode" *Apr 16 23:56:48.756: OSPF:
Interface Dialer0 going Up *Apr 16 23:56:48.760: BR0 DDR: rotor dialout [priority] *Apr 16
23:56:48.764: BR0 DDR: Dialing cause ip (s=10.9.9.1, d=224.0.0.5) ! --- OSPF packets trigger the
call. *Apr 16 23:56:48.768: BR0 DDR: Attempting to dial 6120 *Apr 16 23:56:48.784: ISDN BR0: TX
-> SETUP pd = 8 callref = 0x3E *Apr 16 23:56:48.792: Bearer Capability i = 0x8890 *Apr 16
23:56:48.796: Channel ID i = 0x83 *Apr 16 23:56:48.804: Called Party Number i = 0x80, '6120',
Plan:Unknown, Type:Unknown *Apr 16 23:56:48.844: %LINEPROTO-5-UPDOWN: Line protocol on Interface
Serial1, changed state to down *Apr 16 23:56:48.884: ISDN BR0: RX <- CALL_PROC pd = 8 callref =
0xBE *Apr 16 23:56:48.892: Channel ID i = 0x89 *Apr 16 23:56:49.144: ISDN BR0: RX <- CONNECT pd
= 8 callref = 0xBE *Apr 16 23:56:49.160: %LINK-3-UPDOWN: Interface BRI0:1, changed state to up
*Apr 16 23:56:49.168: %DIALER-6-BIND: Interface BR0:1 bound to profile Di0 *Apr 16 23:56:49.176:
BR0:1 PPP: Treating connection as a callout *Apr 16 23:56:49.180: BR0:1 PPP: Phase is
ESTABLISHING, Active Open [0 sess, 0 load] *Apr 16 23:56:49.184: BR0:1 LCP: O CONFREQ [Closed]
id 49 len 15 *Apr 16 23:56:49.188: BR0:1 LCP: AuthProto CHAP (0x0305C22305) *Apr 16
23:56:49.188: BR0:1 LCP: MagicNumber 0xF2143EDB (0x0506F2143EDB) *Apr 16 23:56:49.196: ISDN BR0:
TX -> CONNECT_ACK pd = 8 callref = 0x3E *Apr 16 23:56:49.224: BR0:1 LCP: I CONFREQ [REQsent] id
83 len 15 *Apr 16 23:56:49.228: BR0:1 LCP: AuthProto CHAP (0x0305C22305) *Apr 16 23:56:49.232:
BR0:1 LCP: MagicNumber 0x9ADACD69 (0x05069ADACD69) *Apr 16 23:56:49.236: BR0:1 LCP: O CONFACK
[REQsent] id 83 len 15 *Apr 16 23:56:49.236: BR0:1 LCP: AuthProto CHAP (0x0305C22305) *Apr 16
23:56:49.240: BR0:1 LCP: MagicNumber 0x9ADACD69 (0x05069ADACD69) *Apr 16 23:56:49.244: BR0:1
LCP: I CONFACK [ACKsent] id 49 len 15 *Apr 16 23:56:49.248: BR0:1 LCP: AuthProto CHAP
(0x0305C22305) *Apr 16 23:56:49.252: BR0:1 LCP: MagicNumber 0xF2143EDB (0x0506F2143EDB) *Apr 16
23:56:49.252: BR0:1 LCP: State is Open *Apr 16 23:56:49.256: BR0:1 PPP: Phase is AUTHENTICATING,
by both [0 sess, 0 load] *Apr 16 23:56:49.260: BR0:1 CHAP: O CHALLENGE id 49 len 28 from
"krimson" *Apr 16 23:56:49.276: BR0:1 CHAP: I CHALLENGE id 51 len 26 from "kevin" *Apr 16
23:56:49.284: BR0:1 CHAP: O RESPONSE id 51 len 28 from "krimson" *Apr 16 23:56:49.332: BR0:1
CHAP: I SUCCESS id 51 len 4 *Apr 16 23:56:49.344: BR0:1 CHAP: I RESPONSE id 49 len 26 from
"kevin" *Apr 16 23:56:49.352: BR0:1 CHAP: O SUCCESS id 49 len 4 *Apr 16 23:56:49.356: BR0:1 PPP:
Phase is UP [0 sess, 0 load] *Apr 16 23:56:49.360: BR0:1 IPCP: O CONFREQ [Not negotiated] id 41
len 10 *Apr 16 23:56:49.364: BR0:1 IPCP: Address 10.9.9.1 (0x03060A090901) *Apr 16 23:56:49.376:
BR0:1 IPCP: I CONFREQ [REQsent] id 29 len 10 *Apr 16 23:56:49.380: BR0:1 IPCP: Address 10.9.9.2
(0x03060A090902) *Apr 16 23:56:49.384: BR0:1 IPCP: O CONFACK [REQsent] id 29 len 10 *Apr 16
23:56:49.388: BR0:1 IPCP: Address 10.9.9.2 (0x03060A090902) *Apr 16 23:56:49.396: BR0:1 IPCP: I
CONFACK [ACKsent] id 41 len 10 *Apr 16 23:56:49.400: BR0:1 IPCP: Address 10.9.9.1
(0x03060A090901) *Apr 16 23:56:49.400: BR0:1 IPCP: State is Open *Apr 16 23:56:49.408: BR0:1
DDR: dialer protocol up *Apr 16 23:56:49.416: Di0 IPCP: Install route to 10.9.9.2 *Apr 16
23:56:49.960: OSPF: Rcv hello from 172.19.0.1 area 0 from Dialer0 10.9.9.2 *Apr 16 23:56:49.964:
OSPF: End of hello processing *Apr 16 23:56:50.356: %LINEPROTO-5-UPDOWN: Line protocol on
Interface BRI0:1, changed state to up *Apr 16 23:56:50.748: %LINK-3-UPDOWN: Interface Dialer0,
changed state to up *Apr 16 23:56:50.752: Di0 LCP: Not allowed on a Dialer Profile *Apr 16
```

```
23:56:50.752: BACKUP(Dialer0): event = primary came up *Apr 16 23:56:55.176: %ISDN-6-CONNECT:
Interface BRI0:1 is now connected to 6120 kevin *Apr 16 23:56:58.804: OSPF: Rcv DBD from
172.19.0.1 on Dialer0 seq 0x988 opt 0x42 flag 0x7 len 32 mtu 1500 state INIT *Apr 16
23:56:58.808: OSPF: 2 Way Communication to 172.19.0.1 on Dialer0, state 2WAY krimson#show
```

interface serial 1.1

```
Serial1.1 is down, line protocol is down
```

```
! --- The primary link is down. Hardware is HD64570 Internet address is 10.5.5.2/24 Backup
interface Dialer0, failure delay 0 sec, secondary disable delay 0 sec MTU 1500 bytes, BW 64
Kbit, DLY 20000 usec, reliability 255/255, txload 1/255, rxload 1/255 Encapsulation FRAME-RELAY
krimson#show interface dialer 0
```

```
Dialer0 is up, line protocol is up (spoofing)
```

```
! --- The backup interface is active and bearing traffic. Hardware is Unknown Internet address
is 10.9.9.1/24 MTU 1500 bytes, BW 56 Kbit, DLY 20000 usec, reliability 255/255, txload 1/255,
rxload 1/255 Encapsulation PPP, loopback not set DTR is pulsed for 1 seconds on reset Interface
is bound to BR0:1 Last input 1w6d, output never, output hang never Last clearing of "show
interface" counters 6w4d Input queue: 0/75/0/0 (size/max/drops/flushes); Total output drops: 0
Queueing strategy: weighted fair Output queue: 0/1000/64/0 (size/max total/threshold/drops)
Conversations 0/1/16 (active/max active/max total) Reserved Conversations 0/0 (allocated/max
allocated) Available Bandwidth 42 kilobits/sec 5 minute input rate 0 bits/sec, 0 packets/sec 5
minute output rate 0 bits/sec, 0 packets/sec 614 packets input, 50240 bytes 618 packets output,
50584 bytes Bound to: BRI0:1 is up, line protocol is up Hardware is BRI MTU 1500 bytes, BW 64
Kbit, DLY 20000 usec, reliability 255/255, txload 1/255, rxload 1/255 Encapsulation PPP,
loopback not set Keepalive not set DTR is pulsed for 1 seconds on reset Time to interface
disconnect: idle 00:01:57 Interface is bound to Di0 (Encapsulation PPP) LCP Open Open: IPCP Last
input 00:00:01, output 00:00:02, output hang never Last clearing of "show interface" counters
never Queueing strategy: fifo Output queue 0/40, 0 drops; input queue 0/75, 0 drops 30 second
input rate 0 bits/sec, 0 packets/sec 30 second output rate 0 bits/sec, 0 packets/sec 3910
packets input, 394443 bytes, 0 no buffer Received 0 broadcasts, 0 runts, 0 giants, 0 throttles
29 input errors, 18 CRC, 0 frame, 0 overrun, 0 ignored, 11 abort 3613 packets output, 222417
bytes, 0 underruns 0 output errors, 0 collisions, 27 interface resets 0 output buffer failures,
0 output buffers swapped out 607 carrier transitions krimson#show ip route
```

```
Codes: C - connected, S - static, I - IGRP, R - RIP, M - mobile, B - BGP
D - EIGRP, EX - EIGRP external, O - OSPF, IA - OSPF inter area
N1 - OSPF NSSA external type 1, N2 - OSPF NSSA external type 2
E1 - OSPF external type 1, E2 - OSPF external type 2, E - EGP
i - IS-IS, L1 - IS-IS level-1, L2 - IS-IS level-2, ia - IS-IS inter area
* - candidate default, U - per-user static route, o - ODR
P - periodic downloaded static route
```

```
Gateway of last resort is 10.200.16.1 to network 0.0.0.0
```

```
192.168.64.0/30 is subnetted, 1 subnets
```

```
C 192.168.64.0 is directly connected, Dialer4
```

```
10.0.0.0/8 is variably subnetted, 6 subnets, 2 masks
```

```
C 10.9.9.2/32 is directly connected, Dialer0
```

```
O 10.8.8.0/24 [110/1786] via 10.9.9.2, 00:00:53, Dialer0
```

```
! --- The route entry to the destination network is now pointing to ! --- the backup
interface as a next hop. C 10.9.9.0/24 is directly connected, Dialer0 C 10.7.7.0/24 is directly
connected, Loopback0 C 10.9.8.0/24 is directly connected, Dialer1 C 10.200.16.0/24 is directly
connected, Ethernet0 S* 0.0.0.0/0 [1/0] via 10.200.16.1 krimson#ping 10.8.8.1
```

```
Type escape sequence to abort.
```

```
Sending 5, 100-byte ICMP Echos to 10.8.8.1, timeout is 2 seconds:
```

```
!!!!
```

```
Success rate is 100 percent (5/5), round-trip min/avg/max = 36/36/40 ms
```

여기서는 프레임 릴레이 네트워크의 장애가 지워지면 시스템이 초기 상태로 되돌아가는 것을 확인할 수 있습니다.

```
krimson#show interface serial 1.1
```

```
Serial1.1 is up, line protocol is up
```

```
Hardware is HD64570
```

```
Internet address is 10.5.5.2/24
Backup interface Dialer0, failure delay 0 sec,
secondary disable delay 0 sec
MTU 1500 bytes, BW 64 Kbit, DLY 20000 usec,
reliability 255/255, txload 1/255, rxload 1/255
Encapsulation FRAME-RELAY
```

```
krimson#show interface dialer 0
```

```
Dialer0 is standby mode (spoofing), line protocol is down (spoofing)
Hardware is Unknown
Internet address is 10.9.9.1/24
MTU 1500 bytes, BW 56 Kbit, DLY 20000 usec,
reliability 255/255, txload 1/255, rxload 1/255
Encapsulation PPP, loopback not set
DTR is pulsed for 1 seconds on reset
Last input 1w6d, output never, output hang never
Last clearing of "show interface" counters 6w5d
Input queue: 0/75/0/0 (size/max/drops/flushes); Total output drops: 0
Queueing strategy: weighted fair
Output queue: 0/1000/64/0 (size/max total/threshold/drops)
Conversations 0/1/16 (active/max active/max total)
Reserved Conversations 0/0 (allocated/max allocated)
Available Bandwidth 42 kilobits/sec
5 minute input rate 0 bits/sec, 0 packets/sec
5 minute output rate 0 bits/sec, 0 packets/sec
665 packets input, 54008 bytes
671 packets output, 54548 bytes
```

```
krimson#show ip route
```

```
Codes: C - connected, S - static, I - IGRP, R - RIP, M - mobile, B - BGP
D - EIGRP, EX - EIGRP external, O - OSPF, IA - OSPF inter area
N1 - OSPF NSSA external type 1, N2 - OSPF NSSA external type 2
E1 - OSPF external type 1, E2 - OSPF external type 2, E - EGP
i - IS-IS, L1 - IS-IS level-1, L2 - IS-IS level-2, ia - IS-IS inter area
* - candidate default, U - per-user static route, o - ODR
P - periodic downloaded static route
Gateway of last resort is 10.200.16.1 to network 0.0.0.0
192.168.64.0/30 is subnetted, 1 subnets
C 192.168.64.0 is directly connected, Dialer4
10.0.0.0/24 is subnetted, 6 subnets
O 10.9.9.0 [110/3347] via 10.5.5.1, 00:08:39, Serial1.1
O 10.8.8.0 [110/1563] via 10.5.5.1, 00:08:39, Serial1.1
C 10.5.5.0 is directly connected, Serial1.1
C 10.7.7.0 is directly connected, Loopback0
C 10.9.8.0 is directly connected, Dialer1
C 10.200.16.0 is directly connected, Ethernet0
S* 0.0.0.0/0 [1/0] via 10.200.16.1
krimson#
```

참고: 호출된 측면에는 특정 구성이 필요하지 않습니다.

정상 작업 중에 기록된 동일한 show 출력에는 다음 정보가 포함됩니다.

```
kevin#show interface serial 0.1
```

```
Serial0.1 is up, line protocol is up
! --- The primary interface is up and running. Hardware is HD64570 Internet address is
10.5.5.1/24 MTU 1500 bytes, BW 1544 Kbit, DLY 20000 usec, reliability 255/255, txload 1/255,
rxload 1/255 Encapsulation FRAME-RELAY kevin#show interface dialer 0
Dialer0 is up (spoofing), line protocol is up (spoofing)
! --- Note: On the called side, the dialer interface is active ! --- and not in standby mode.
Hardware is Unknown Internet address is 10.9.9.2/24 MTU 1500 bytes, BW 56 Kbit, DLY 20000 usec,
```


reliability 255/255, txload 1/255, rxload 1/255 Encapsulation PPP, loopback not set DTR is pulsed for 1 seconds on reset Last input 1w6d, output never, output hang never Last clearing of "show interface" counters 4w2d Input queue: 0/75/0/0 (size/max/drops/flushes); Total output drops: 0 Queueing strategy: weighted fair Output queue: 0/1000/64/0 (size/max total/threshold/drops) Conversations 0/1/16 (active/max active/max total) Reserved Conversations 0/0 (allocated/max allocated) Available Bandwidth 42 kilobits/sec 5 minute input rate 0 bits/sec, 0 packets/sec 5 minute output rate 0 bits/sec, 0 packets/sec 598 packets input, 49252 bytes 596 packets output, 48924 bytes kevin#**show ip route**

Codes: C - connected, S - static, I - IGRP, R - RIP, M - mobile, B - BGP
D - EIGRP, EX - EIGRP external, O - OSPF, IA - OSPF inter area
N1 - OSPF NSSA external type 1, N2 - OSPF NSSA external type 2
E1 - OSPF external type 1, E2 - OSPF external type 2, E - EGP
i - IS-IS, L1 - IS-IS level-1, L2 - IS-IS level-2, ia - IS-IS inter area
* - candidate default, U - per-user static route, o - ODR
P - periodic downloaded static route

Gateway of last resort is 10.200.16.1 to network 0.0.0.0

172.17.0.0/32 is subnetted, 1 subnets
S 172.17.247.195 [1/0] via 10.200.16.1
172.19.0.0/32 is subnetted, 1 subnets
C 172.19.0.1 is directly connected, Loopback1
10.0.0.0/24 is subnetted, 5 subnets
C 10.5.5.0 is directly connected, Serial0.1
O 10.7.7.0 [110/65] via 10.5.5.2, 00:04:27, Serial0.1
C 10.9.9.0 is directly connected, Dialer0
C 10.8.8.0 is directly connected, Loopback0
C 10.200.16.0 is directly connected, Ethernet0
S* 0.0.0.0/0 [1/0] via 10.200.16.1

다음은 장애 시 기록된 것과 동일한 정보입니다.

kevin#**show interface serial 0.1**

Serial0.1 is down, line protocol is down
Hardware is HD64570
Internet address is 10.5.5.1/24
MTU 1500 bytes, BW 1544 Kbit, DLY 20000 usec,
reliability 255/255, txload 1/255, rxload 1/255
Encapsulation FRAME-RELAY

kevin#**show interface dialer 0**

Dialer0 is up, line protocol is up (spoofing)
Hardware is Unknown
Internet address is 10.9.9.2/24
MTU 1500 bytes, BW 56 Kbit, DLY 20000 usec,
reliability 255/255, txload 1/255, rxload 1/255
Encapsulation PPP, loopback not set
DTR is pulsed for 1 seconds on reset
Interface is bound to BR0:1
Last input 1w6d, output never, output hang never
Last clearing of "show interface" counters 4w2d
Input queue: 0/75/0/0 (size/max/drops/flushes); Total output drops: 0
Queueing strategy: weighted fair
Output queue: 0/1000/64/0 (size/max total/threshold/drops)
Conversations 0/1/16 (active/max active/max total)
Reserved Conversations 0/0 (allocated/max allocated)
Available Bandwidth 42 kilobits/sec
5 minute input rate 0 bits/sec, 0 packets/sec
5 minute output rate 0 bits/sec, 0 packets/sec
618 packets input, 50700 bytes
616 packets output, 50384 bytes
Bound to:

```
BRI0:1 is up, line protocol is up
Hardware is BRI
MTU 1500 bytes, BW 64 Kbit, DLY 20000 usec,
reliability 255/255, txload 1/255, rxload 1/255
Encapsulation PPP, loopback not set
Keepalive set (10 sec)
DTR is pulsed for 1 seconds on reset
Time to interface disconnect: idle 00:01:57
Interface is bound to Di0 (Encapsulation PPP)
LCP Open
Open: IPCP
Last input 00:00:03, output 00:00:02, output hang never
Last clearing of "show interface" counters never
Queueing strategy: fifo
Output queue 0/40, 0 drops; input queue 0/75, 0 drops
5 minute input rate 0 bits/sec, 0 packets/sec
5 minute output rate 0 bits/sec, 0 packets/sec
1280 packets input, 138077 bytes, 0 no buffer
Received 0 broadcasts, 0 runts, 0 giants, 0 throttles
9789 input errors, 9789 CRC, 0 frame, 0 overrun, 0 ignored, 0 abort
1309 packets output, 138487 bytes, 0 underruns
0 output errors, 0 collisions, 15 interface resets
0 output buffer failures, 0 output buffers swapped out
351 carrier transitions
```

```
kevin#show ip route
```

```
Codes: C - connected, S - static, I - IGRP, R - RIP, M - mobile, B - BGP
D - EIGRP, EX - EIGRP external, O - OSPF, IA - OSPF inter area
N1 - OSPF NSSA external type 1, N2 - OSPF NSSA external type 2
E1 - OSPF external type 1, E2 - OSPF external type 2, E - EGP
i - IS-IS, L1 - IS-IS level-1, L2 - IS-IS level-2, ia - IS-IS inter area
* - candidate default, U - per-user static route, o - ODR
P - periodic downloaded static route
Gateway of last resort is 10.200.16.1 to network 0.0.0.0
172.17.0.0/32 is subnetted, 1 subnets
S 172.17.247.195 [1/0] via 10.200.16.1
172.19.0.0/32 is subnetted, 1 subnets
C 172.19.0.1 is directly connected, Loopback1
10.0.0.0/8 is variably subnetted, 5 subnets, 2 masks
O 10.7.7.0/24 [110/1786] via 10.9.9.1, 00:01:21, Dialer0
C 10.9.9.0/24 is directly connected, Dialer0
C 10.8.8.0/24 is directly connected, Loopback0
C 10.9.9.1/32 is directly connected, Dialer0
C 10.200.16.0/24 is directly connected, Ethernet0
S* 0.0.0.0/0 [1/0] via 10.200.16.1
```

문제 해결

이 섹션에서는 컨피그레이션 문제를 해결하는 데 사용할 수 있는 정보를 제공합니다.

여기서 사용되는 라우팅 프로토콜로서 포인트-투-포인트 하위 인터페이스와 OSPF(Open Shortest Path First)가 포함된 프레임 릴레이 컨피그레이션은 이 설정에 따라 다릅니다. 그러나 표시되는 문제 해결 단계는 보다 일반적이며 사용되는 라우팅 프로토콜에 관계없이 프레임 릴레이 포인트-투-멀티포인트 또는 HDLC(High-Level Data Link Control) 또는 PPP(Point-to-Point Protocol) 캡슐화가 포함된 기본 링크와 같은 다른 컨피그레이션과 함께 사용할 수 있습니다.

백업 기능을 확인하기 위해 Frame Relay 스위치로 작동하는 Cisco 4500 라우터의 인터페이스 중 하나가 프레임 릴레이 네트워크 내에서 문제를 시뮬레이션하기 위해 종료 상태로 설정되었습니다. 따라서 Frame Relay 네트워크를 통해 DTE 라우터에 실행되는 PVC 비활성 상태 및 Frame Relay

하위 인터페이스 다운 이벤트가 발생합니다. 이렇게 하면 백업 인터페이스가 활성화됩니다.

문제 해결 명령

참고: debug 명령을 실행하기 전에 [디버그 명령에 대한 중요 정보를 참조하십시오](#).

- 디버그 isdn q931
- 디버그 백업 - 백업 이벤트를 디버깅합니다.
- debug dialer - 다이얼러 인터페이스의 패킷 또는 이벤트에 대한 디버깅 정보를 표시합니다.
- debug ppp negotiation - debug ppp ppp 명령이 PPP 시작 중에 전송된 PPP 패킷을 표시하도록 합니다. 여기서 PPP 옵션은 협상됩니다.
- debug ppp authentication - debug ppp 명령이 CHAP(Challenge Authentication Protocol) 패킷 교환 및 PAP>Password Authentication Protocol) 교환을 비롯한 인증 프로토콜 메시지를 표시하도록 합니다.
- debug ip ospf events - 인접성, 플러딩 정보, 지정된 라우터 선택, SPF(shortest path first) 계산 등 OSPF 관련 이벤트에 대한 정보를 표시합니다.
- debug frame-relay events - 멀티캐스트 채널을 지원하고 동적 주소 지정을 사용하는 네트워크에서 프레임 릴레이 ARP 회신에 대한 디버깅 정보를 표시합니다.

관련 정보

- [액세스 다이얼 기술 지원 페이지](#)
- [Technical Support - Cisco Systems](#)