

# WindowsマシンからCiscoルータへのPPPoEセッションの設定

## 内容

[概要](#)

[前提条件](#)

[要件](#)

[使用するコンポーネント](#)

[設定](#)

[ネットワーク図](#)

[設定](#)

[BRASの設定](#)

[Windowsマシンの設定](#)

[確認](#)

[トラブルシューティング](#)

[関連情報](#)

## 概要

このドキュメントでは、Windowsマシン ( PPPoEクライアントとして機能する ) と PPPoEサーバとして機能するCiscoルータの間にPoint-to-Point Connection over Ethernet(PPPoE)を設定する手順について説明します。

## 前提条件

### 要件

エンドツーエンドのレイヤ1接続がユーザプライオリティ(UP)であることを理解しておくことをお勧めします。

### 使用するコンポーネント

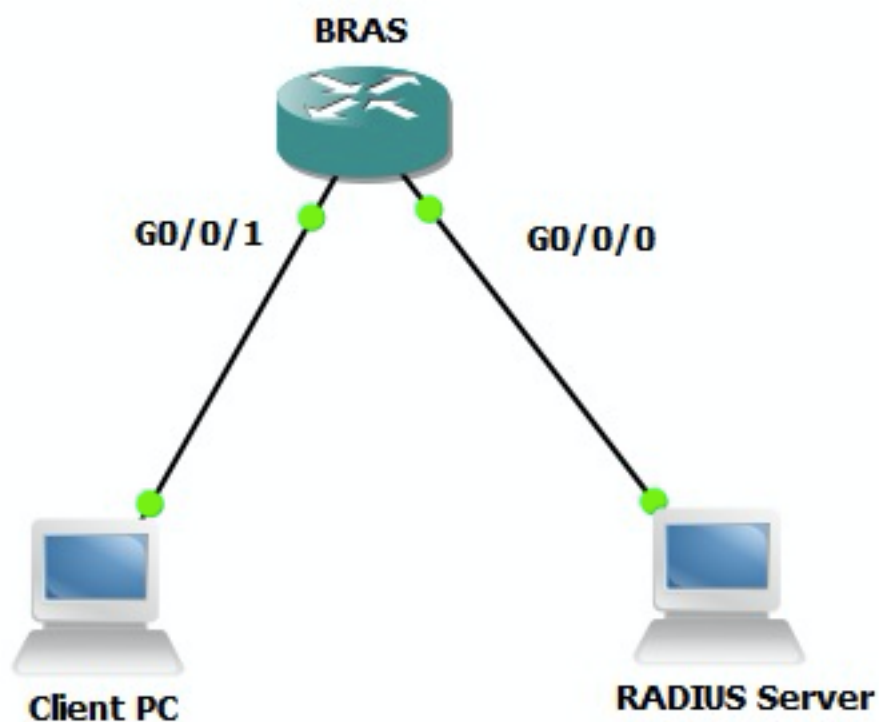
このドキュメントの内容は、特定のソフトウェアやハードウェアのバージョンに限定されるものではありません。

このドキュメントの情報は、特定のラボ環境にあるデバイスに基づいて作成されました。このドキュメントで使用するすべてのデバイスは、初期 ( デフォルト ) 設定の状態から起動しています。対象のネットワークが実稼働中である場合には、どのようなコマンドについても、その潜在的な影響について確実に理解しておく必要があります。

## 設定

## ネットワーク図

このドキュメントでは、次の図に示すネットワーク設定を使用しています。



## 設定

### BRASの設定

```
aaa new-model

! Enabling AAA on router

!

aaa authentication ppp PPPOE-METD group PPPOE-RADIUS

! Defining AAA method list for PPP Authentication

aaa authorization network PPPOE-AUTHOR-METD group PPPOE-RADIUS

! Defining AAA method list for PPP Authorization

aaa accounting network PPPOE-ACCT-METD start-stop group PPPOE-RADIUS

! Defining AAA method list for PPP Accounting

!

aaa group server radius PPPOE-RADIUS

! Defining AAA Server Group named PPPOE-RADIUS
server-private 10.106.39.253 key cisco
ip radius source-interface GigabitEthernet0/0/0

!
```

```
bba-group pppoe BBA-TEST
virtual-template 10

!

interface GigabitEthernet0/0/1.47
encapsulation dot1Q 1 native
pppoe enable group BBA-TEST
end

!

interface Virtual-Template10
ip unnumbered Loopback10
peer default ip address pool local

! Calling three named AAA Method lists configured above under this Virtual Template
ppp authentication pap chap PPPOE-METD
ppp authorization PPPOE-AUTHOR-METD
ppp accounting PPPOE-ACCT-METD
end

!

ip local pool local 192.168.1.2 192.168.1.10

!

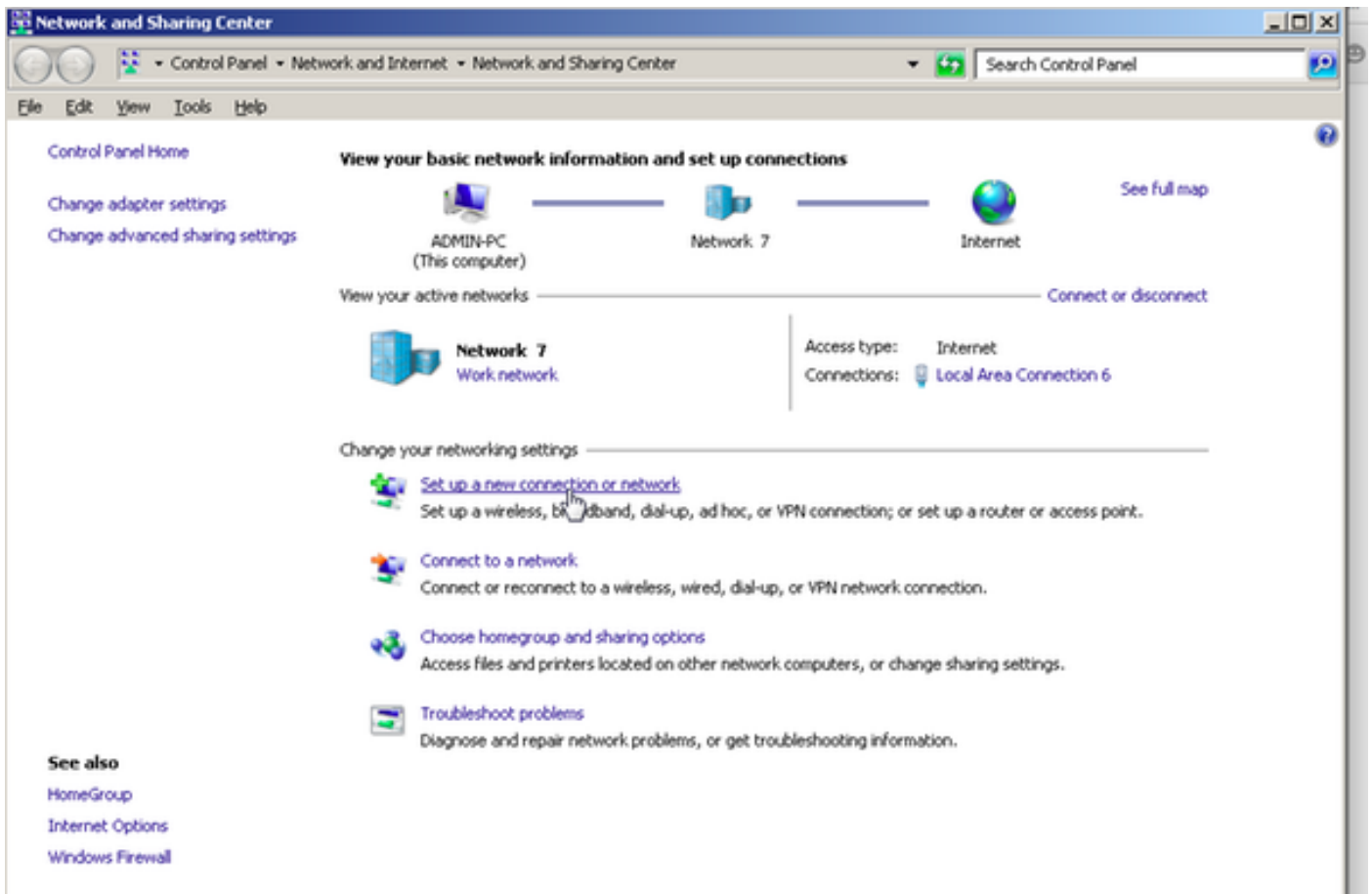
interface Loopback10
ip address 192.168.1.1 255.255.255.255
end

!
```

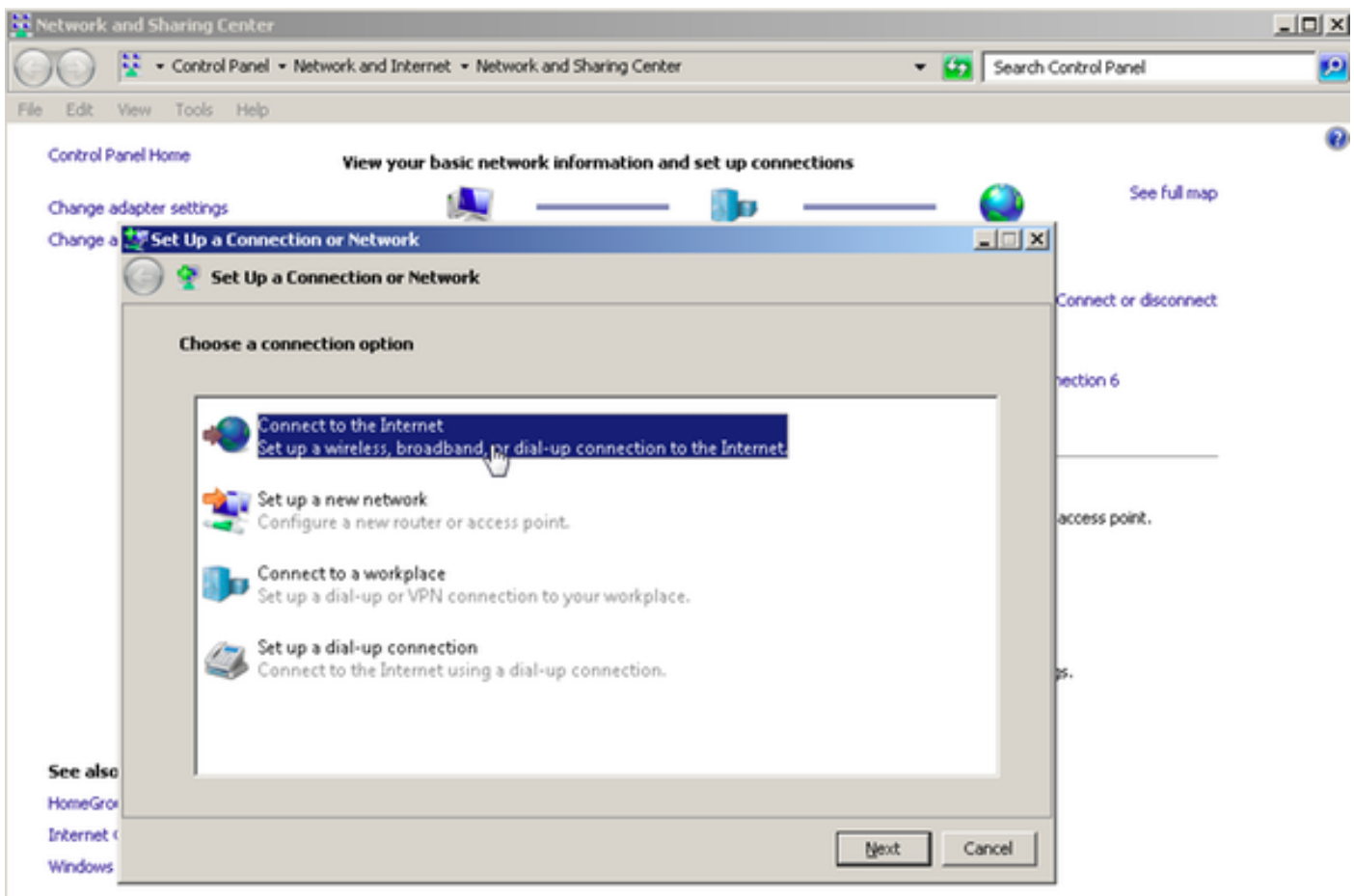
## Windowsマシンの設定

PPPoEクライアントとして機能するWindowsマシンからPPPoEセッションを開始するには、次の手順を実行します。

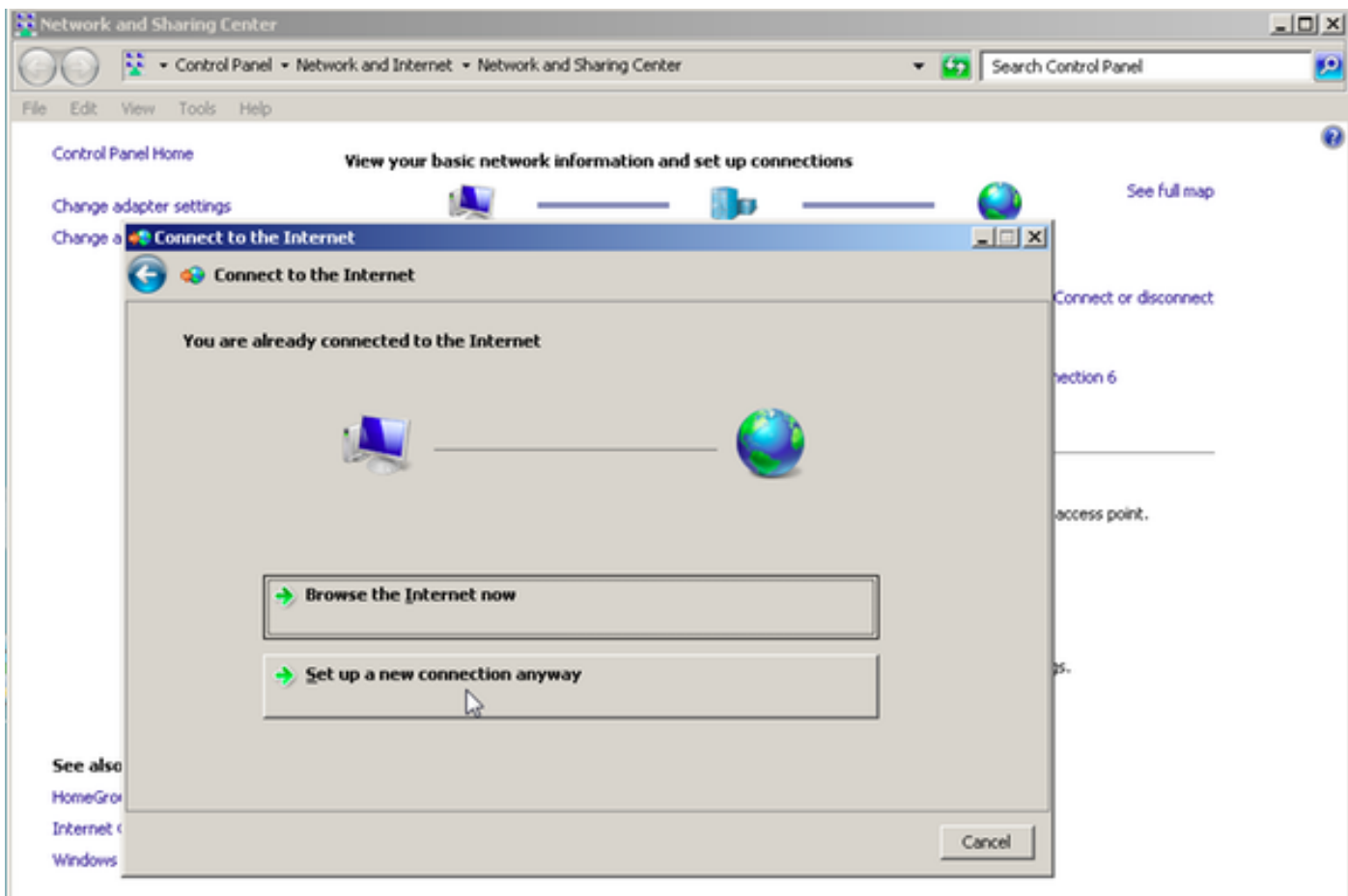
ステップ1：図に示すように、[Network and Sharing Center]を開き、[Set up a new connection or network]をクリックします。



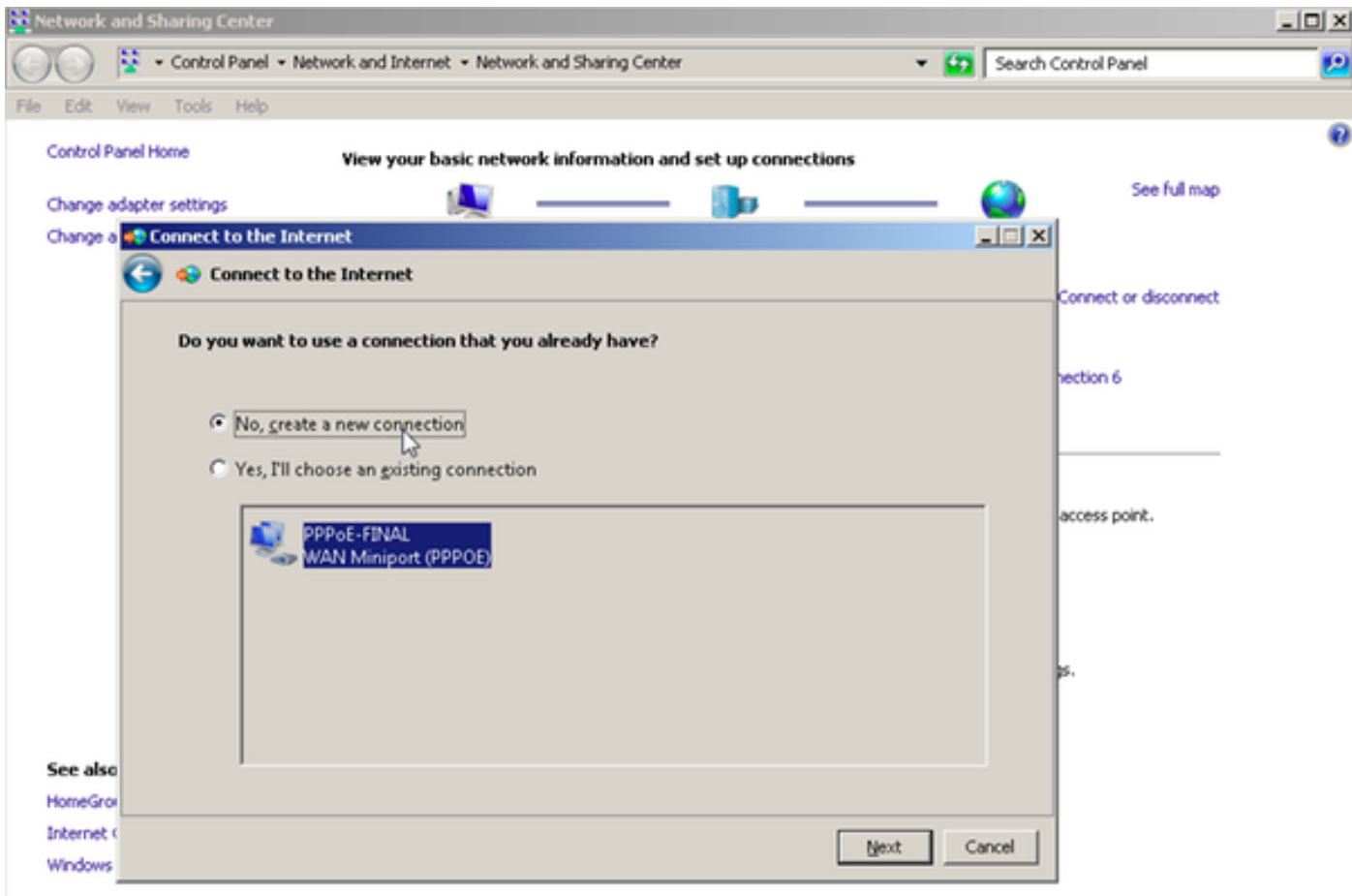
ステップ2 : 図に示すように、[Connect to the Internet]を選択し、[Next]をクリックします。



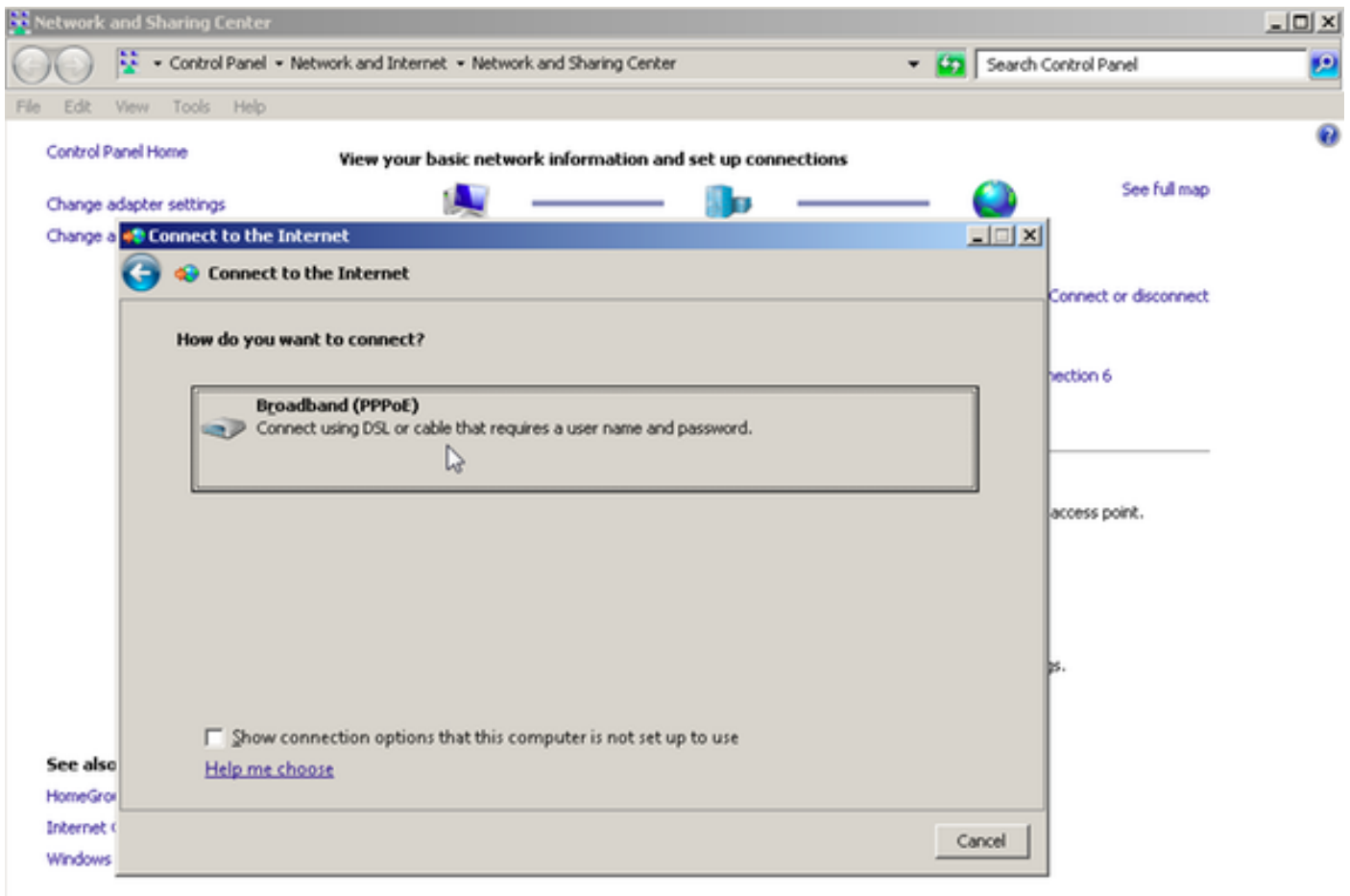
ステップ3 : 図に示すように、[Set up a new connection anyway]を選択します。



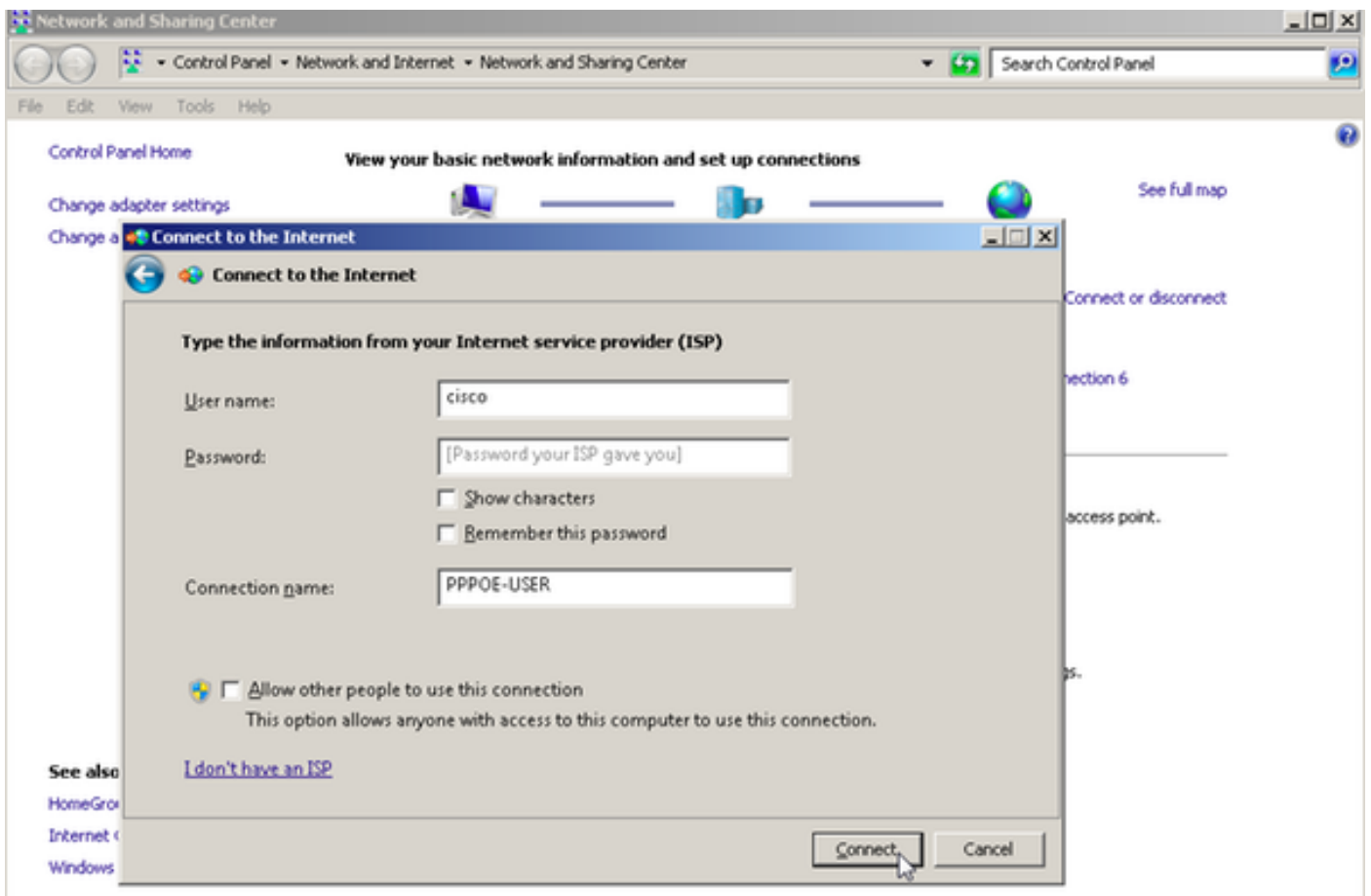
ステップ4 : 図に示すように、[No, create a new connection:]を選択します。



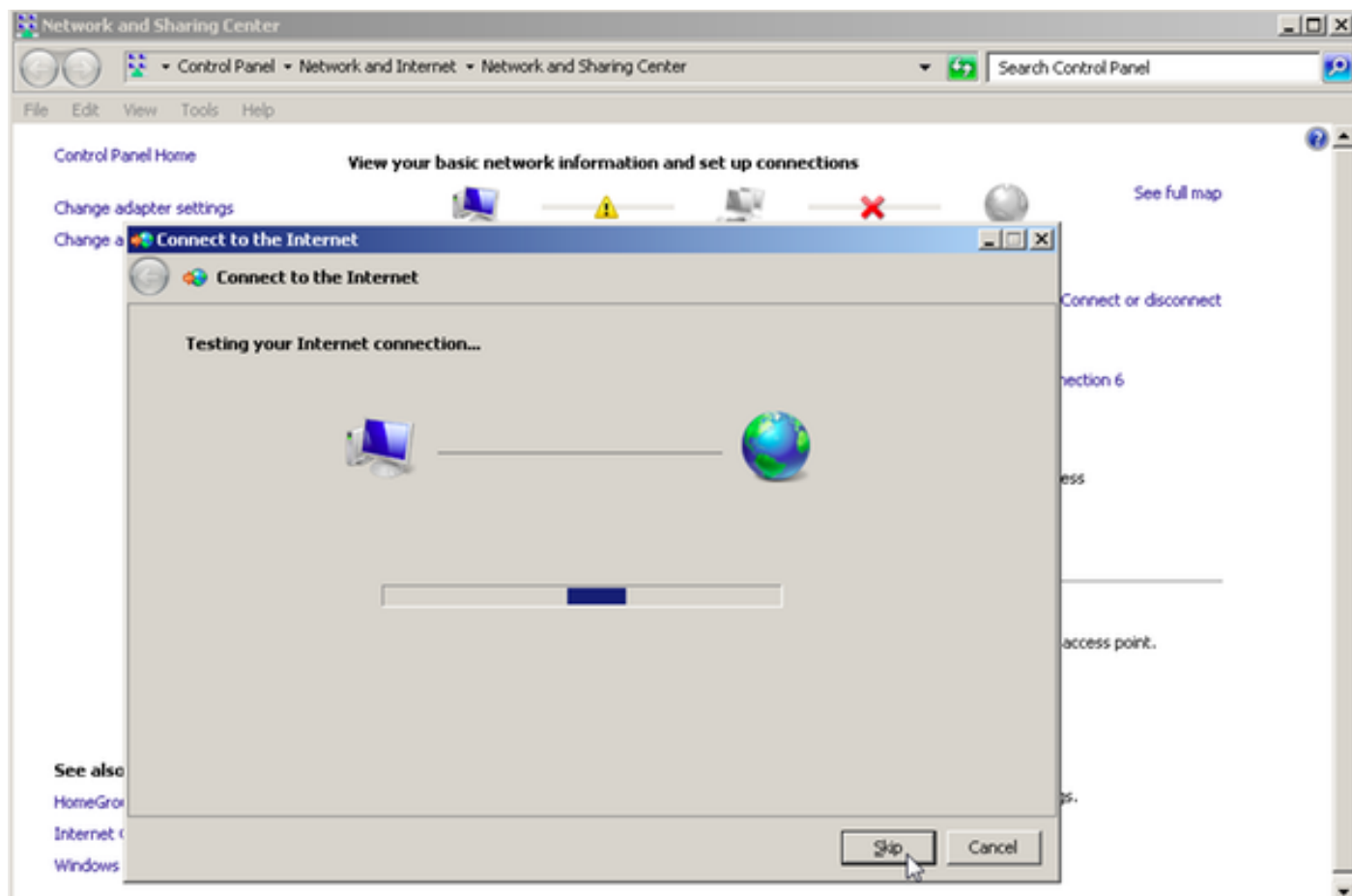
ステップ5 : 図に示すように、[Broadband (PPPoE)]をクリックします。



ステップ6 : 図に示すように、[User name]、[Password]、および[Connection name]を入力し、をクリックします **Connect**.



これにより、サーバへのPPPoEセッションが開始されます。図に示すように、確認セクションを確認します。



## 確認

ステップ1:[Networks] タブを再び開き、ネットワーク（この例ではPPPOE-USERという名前）を選択し、ステータスを確認します。[Connect] をクリックして、ユーザ名とパスワードを入力した後でセッションを開始します（図を参照）。

Network and Sharing Center

Control Panel > Network and Internet > Network and Sharing Center

File Edit View Tools Help

Control Panel Home

Change adapter settings  
Change advanced sharing settings

**View your basic network information and set up connections**

ADMIN-PC (This computer) — Network 7 — Internet [See full map](#)

View your active networks [Connect or disconnect](#)

**Network 7**  
Work network

Access type: Internet  
Connections: Local Area Connection 6

Change your networking settings

- Set up a new connection or network  
Set up a wireless, broadband, dial-up, ad hoc, or VPN connection; or set up a router or access point.
- Connect to a network  
Connect or reconnect to a wireless, wired, dial-up, or VPN network connection.
- Choose homegroup and sharing options  
Access files and printers located on other network computers, or change sharing options.
- Troubleshoot problems  
Diagnose and repair network problems, or get troubleshooting information.

**See also**

- HomeGroup
- Internet Options
- Windows Firewall

Currently connected to: **Network 7** Internet access

Dial-up and VPN

PPPOE-USER [Connect](#)

PPPoE-FINAL

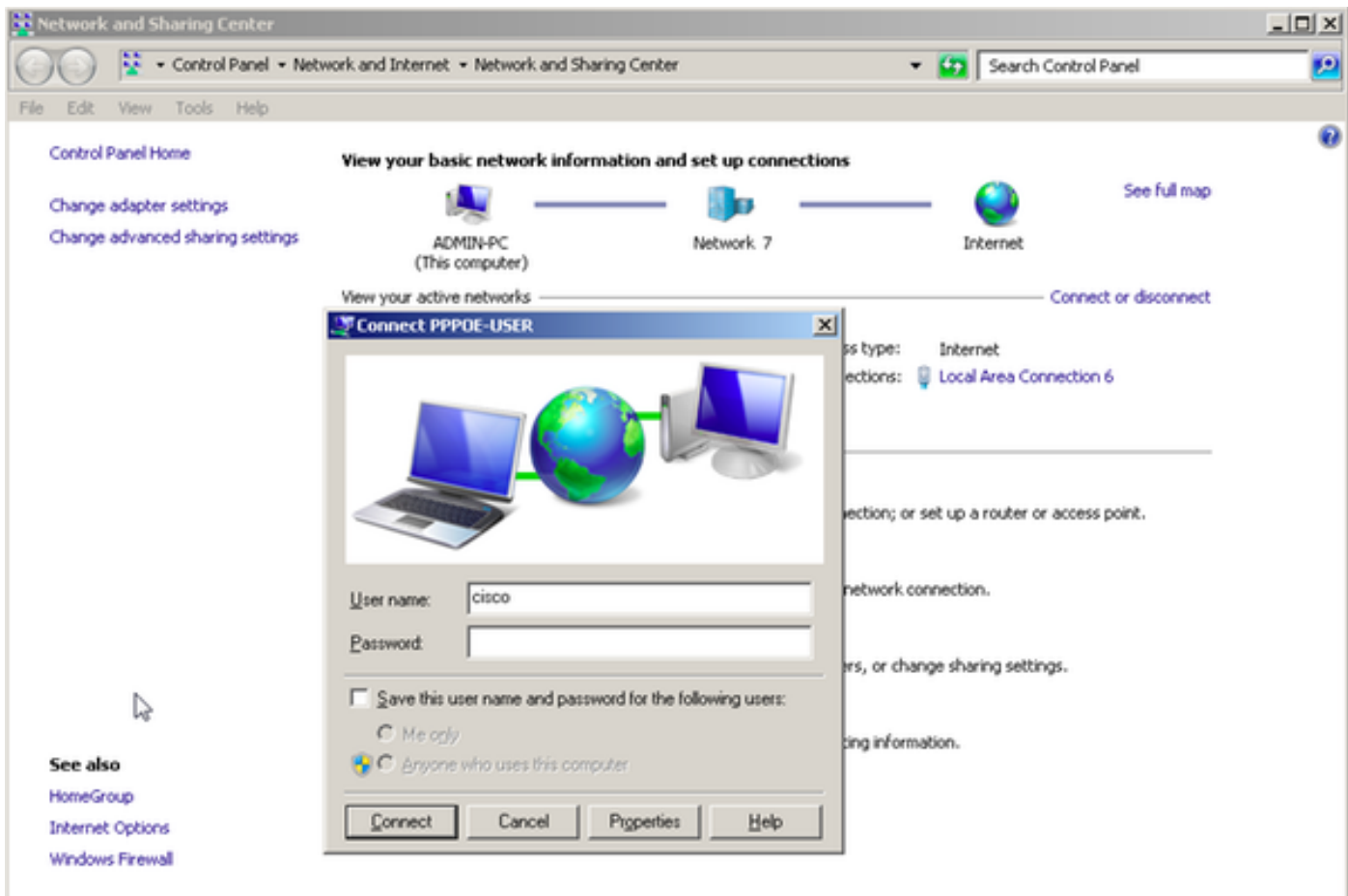
PPP-1

pppoe

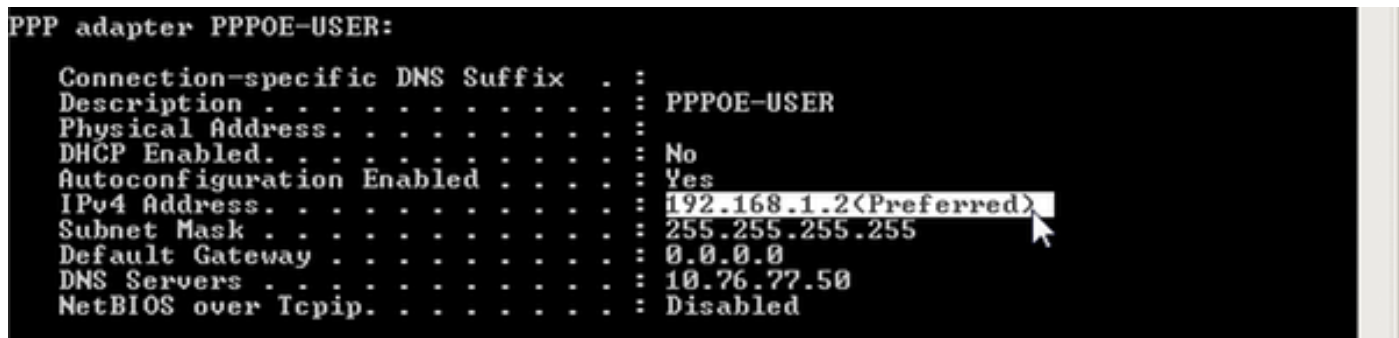
(non  
10.76  
\\10.1  
tftp

Open Network and Sharing Center





ステップ2 : コマンドプロンプトを開き、`ipconfig /all`コマンドを実行して、ネゴシエートされたIPアドレスを確認します ( 図を参照 )。



ステップ3: PPPoEセッションの確立をチェックするために、`debug pppoe event`、`debug pppoe error`、および`debug ppp negotiation`を有効にします。 `debug radius`を有効にして、Radiusサーバと交換されたメッセージを表示することもできます。

```
BRAS#show debugging
```

```

PPP:
PPP protocol negotiation debugging is on
PPPoE:
PPPoE protocol events debugging is on
PPPoE protocol errors debugging is on
  
```

```
Radius protocol debugging is on
```

Radius packet protocol debugging is on

Debug snippet:

BRAS#

\*Sep 19 18:44:14.531: PPPoE 0: I PADI R:0050.56ad.7206 L:ffff.ffff.ffff Gi0/0/1.47

! Receiving PPPoE Active Discovery Initiation (PADI) broadcast packet from Windows Machine (MAC 0050.56ad.7206) on Router interface Gi0/0/1.47

\*Sep 19 18:44:14.531: Service tag: NULL Tag

\*Sep 19 18:44:14.531: PPPoE 0: O PADO, R:d867.d99f.6601 L:0050.56ad.7206 Gi0/0/1.47

! Sending PPPoE Active Discovery Offer (PADO) unicast packet from Router interface Gi0/0/1.47 (MAC d867.d99f.6601 ) to Windows Machine (MAC 0050.56ad.7206)

\*Sep 19 18:44:14.531: Service tag: NULL Tag

\*Sep 19 18:44:14.533: PPPoE 0: I PADR R:0050.56ad.7206 L:d867.d99f.6601 Gi0/0/1.47

! Receiving PPPoE Active Discovery Request (PADR) unicast packet from Windows Machine (MAC 0050.56ad.7206) on Router interface Gi0/0/1.47

\*Sep 19 18:44:14.533: Service tag: NULL Tag

\*Sep 19 18:44:14.533: PPPoE : encap string prepared

\*Sep 19 18:44:14.533: [76]PPPoE 63: Access IE handle allocated

\*Sep 19 18:44:14.533: [76]PPPoE 63: AAA get retrieved attrs

\*Sep 19 18:44:14.533: [76]PPPoE 63: AAA get nas port details

\*Sep 19 18:44:14.533: [76]PPPoE 63: Error adjusting nas port format did

\*Sep 19 18:44:14.533: [76]PPPoE 63: AAA get dynamic attrs

\*Sep 19 18:44:14.533: [76]PPPoE 63: AAA unique ID 88 allocated

\*Sep 19 18:44:14.533: [76]PPPoE 63: No AAA accounting method list

\*Sep 19 18:44:14.534: [76]PPPoE 63: Service request sent to SSS

\*Sep 19 18:44:14.534: [76]PPPoE 63: Created, Service: None R:d867.d99f.6601 L:0050.56ad.7206 Gi0/0/1.47

\*Sep 19 18:44:14.534: [76]PPPoE 63: State NAS\_PORT\_POLICY\_INQUIRY Event SSS MORE KEYS

\*Sep 19 18:44:14.534: PPP: Alloc Context [7FE79EC0D8C8]

\*Sep 19 18:44:14.534: ppp76 PPP: Phase is ESTABLISHING

\*Sep 19 18:44:14.534: [76]PPPoE 63: data path set to PPP

\*Sep 19 18:44:14.534: [76]PPPoE 63: Segment (SSS class): PROVISION

! We can also enable 'debug sss events' and 'debug sss error' to debug this stage

\*Sep 19 18:44:14.534: [76]PPPoE 63: State PROVISION\_PPP Event SSM PROVISIONED

\*Sep 19 18:44:14.534: [76]PPPoE 63: O PADS R:0050.56ad.7206 L:d867.d99f.6601 Gi0/0/1.47

! Sending PPPoE Active Discovery Session Confirmation (PADS) unicast packets from Router interface Gi0/0/1.47 (MAC d867.d99f.6601 ) to Windows Machine (MAC 0050.56ad.7206)

\*Sep 19 18:44:14.534: [76]PPPoE 63: Unable to Add ANCP Line attributes to the PPPoE Authen attributes

! Access Node Control Protocol (ANCP) is configured between the Digital Subscriber Line Access Concentrator (DSLAM) and Broadband Remote Access Server (BRAS), which is used to aggregate traffic from multiple subscribers and deliver information for any application independently. More information related to ANCP could be found here. It is expected for the IOS to print this message even if ANCP is not enabled.

```
*Sep 19 18:44:14.534: ppp76 PPP: Using vpn set call direction
*Sep 19 18:44:14.534: ppp76 PPP: Treating connection as a callin
*Sep 19 18:44:14.534: ppp76 PPP: Session handle[8800004C] Session id[76]
*Sep 19 18:44:14.534: ppp76 LCP: Event[OPEN] State[Initial to Starting]
*Sep 19 18:44:14.534: ppp76 PPP LCP: Enter passive mode, state[Stopped]
*Sep 19 18:44:14.539: ppp76 LCP: I CONFREQ [Stopped] id 0 len 21
*Sep 19 18:44:14.539: ppp76 LCP: MRU 1480 (0x010405C8)
*Sep 19 18:44:14.539: ppp76 LCP: MagicNumber 0x61EB5A46 (0x050661EB5A46)
*Sep 19 18:44:14.539: ppp76 LCP: PFC (0x0702)
*Sep 19 18:44:14.539: ppp76 LCP: ACFC (0x0802)
*Sep 19 18:44:14.539: ppp76 LCP: Callback 6 (0x0D0306)
*Sep 19 18:44:14.539: ppp76 LCP: O CONFREQ [Stopped] id 1 len 18
*Sep 19 18:44:14.539: ppp76 LCP: MRU 1492 (0x010405D4)
*Sep 19 18:44:14.539: ppp76 LCP: AuthProto PAP (0x0304C023)
*Sep 19 18:44:14.539: ppp76 LCP: MagicNumber 0x7B063BEA (0x05067B063BEA)
*Sep 19 18:44:14.539: ppp76 LCP: O CONFREQ [Stopped] id 0 len 7
*Sep 19 18:44:14.539: ppp76 LCP: Callback 6 (0x0D0306)
*Sep 19 18:44:14.539: ppp76 LCP: Event[Receive ConfReq-] State[Stopped to REQsent]
*Sep 19 18:44:14.540: ppp76 LCP: I CONFACK [REQsent] id 1 len 18
*Sep 19 18:44:14.540: ppp76 LCP: MRU 1492 (0x010405D4)
*Sep 19 18:44:14.540: ppp76 LCP: AuthProto PAP (0x0304C023)
*Sep 19 18:44:14.540: ppp76 LCP: MagicNumber 0x7B063BEA (0x05067B063BEA)
*Sep 19 18:44:14.540: ppp76 LCP: Event[Receive ConfAck] State[REQsent to ACKrcvd]
*Sep 19 18:44:14.540: ppp76 LCP: I CONFREQ [ACKrcvd] id 1 len 18
*Sep 19 18:44:14.540: ppp76 LCP: MRU 1480 (0x010405C8)
*Sep 19 18:44:14.540: ppp76 LCP: MagicNumber 0x61EB5A46 (0x050661EB5A46)
*Sep 19 18:44:14.540: ppp76 LCP: PFC (0x0702)
*Sep 19 18:44:14.540: ppp76 LCP: ACFC (0x0802)
*Sep 19 18:44:14.540: ppp76 LCP: O CONFACK [ACKrcvd] id 1 len 18
*Sep 19 18:44:14.540: ppp76 LCP: MRU 1480 (0x010405C8)
*Sep 19 18:44:14.540: ppp76 LCP: MagicNumber 0x61EB5A46 (0x050661EB5A46)
*Sep 19 18:44:14.540: ppp76 LCP: PFC (0x0702)
*Sep 19 18:44:14.540: ppp76 LCP: ACFC (0x0802)
*Sep 19 18:44:14.540: ppp76 LCP: Event[Receive ConfReq+] State[ACKrcvd to Open]
*Sep 19 18:44:14.541: ppp76 LCP: I IDENTIFY [Open] id 2 len 18 magic 0x61EB5A46MSRASV5.20
*Sep 19 18:44:14.541: ppp76 LCP: I IDENTIFY [Open] id 3 len 24 magic 0x61EB5A46MSRAS-0-ADMIN-PC
*Sep 19 18:44:14.541: ppp76 LCP: I IDENTIFY [Open] id 4 len 24 magic 0x61EB5A46sPPY.X`I?Z5SWE}}
*Sep 19 18:44:14.541: ppp76 PPP: Queue PAP code[1] id[78]
*Sep 19 18:44:14.563: ppp76 PPP: Phase is AUTHENTICATING, by this end
*Sep 19 18:44:14.564: ppp76 PAP: Redirect packet to ppp76
*Sep 19 18:44:14.564: ppp76 PAP: I AUTH-REQ id 78 len 11 from "cisco"
```

! Incoming Authentication Request from Windows Machine using User name "cisco"

```
*Sep 19 18:44:14.564: ppp76 PAP: Authenticating peer cisco
*Sep 19 18:44:14.564: ppp76 PPP: Phase is FORWARDING, Attempting Forward
```

```
*Sep 19 18:44:14.564: ppp76 LCP: State is Open
*Sep 19 18:44:14.564: ppp76 PPP: Phase is AUTHENTICATING, Unauthenticated User
*Sep 19 18:44:14.564: RADIUS/ENCODE(00000088):Orig. component type = PPPoE
*Sep 19 18:44:14.564: RADIUS: DSL line rate attributes successfully added
*Sep 19 18:44:14.564: RADIUS/ENCODE: Skip encoding 0 length AAA Cisco vsa password
*Sep 19 18:44:14.564: RADIUS(00000088): Config NAS IP: 10.106.39.212
*Sep 19 18:44:14.564: RADIUS(00000088): Config NAS IPv6: ::
*Sep 19 18:44:14.564: RADIUS/ENCODE: No idb found! Framed IP Addr might not be included
*Sep 19 18:44:14.564: RADIUS/ENCODE(00000088): acct_session_id: 125
*Sep 19 18:44:14.564: RADIUS(00000088): Config NAS IP: 10.106.39.212
*Sep 19 18:44:14.564: RADIUS(00000088): sending
*Sep 19 18:44:14.564: RADIUS(00000088): Send Access-Request to 10.106.39.253:1645 id 1645/106,
len 147
```

! Sending an Access-Request to Radius Server at 10.106.39.253 on port 1645.

```
*Sep 19 18:44:14.564: RADIUS: authenticator C1 5B AA 62 1D E1 31 6C - 16 A5 CE 92 D6 9C 12 E7
*Sep 19 18:44:14.564: RADIUS: Framed-Protocol [7] 6 PPP [1]
*Sep 19 18:44:14.564: RADIUS: User-Name [1] 7 "cisco"
*Sep 19 18:44:14.564: RADIUS: User-Password [2] 18 *
*Sep 19 18:44:14.564: RADIUS: NAS-Port-Type [61] 6 Virtual [5]
*Sep 19 18:44:14.564: RADIUS: NAS-Port [5] 6 0
*Sep 19 18:44:14.564: RADIUS: NAS-Port-Id [87] 9 "0/0/1/1"
*Sep 19 18:44:14.564: RADIUS: Vendor, Cisco [26] 41
*Sep 19 18:44:14.564: RADIUS: Cisco AVpair [1] 35 "client-mac-address=0050.56ad.7206"
*Sep 19 18:44:14.564: RADIUS: Service-Type [6] 6 Framed [2]
*Sep 19 18:44:14.564: RADIUS: NAS-IP-Address [4] 6 10.106.39.212
*Sep 19 18:44:14.564: RADIUS: Acct-Session-Id [44] 10 "0000007D"
*Sep 19 18:44:14.564: RADIUS: Nas-Identifier [32] 12 "BRAS"
*Sep 19 18:44:14.564: RADIUS(00000088): Sending a IPv4 Radius Packet
*Sep 19 18:44:14.564: RADIUS(00000088): Started 5 sec timeout
*Sep 19 18:44:14.566: RADIUS: Received from id 1645/106 10.106.39.253:1645, Access-Accept, len
52
```

! Receiving an Access-Accep from Radius Server

```
*Sep 19 18:44:14.566: RADIUS: authenticator C0 0D 6C 33 F1 A3 04 27 - F0 C2 76 F5 54 FD E2 42
*Sep 19 18:44:14.566: RADIUS: Class [25] 32
*Sep 19 18:44:14.566: RADIUS: 4A 83 05 60 00 00 01 37 00 01 0A 6A 27 FD 01 D2 12 2E 98 D0 4F B0
00 00 00 00 00 00 14 [ J`7j'.O]
*Sep 19 18:44:14.566: RADIUS(00000088): Received from id 1645/106
*Sep 19 18:44:14.566: ppp76 PPP: Phase is FORWARDING, Attempting Forward
*Sep 19 18:44:14.568: [76]PPPoE 63: State LCP_NEGOTIATION Event SSS CONNECT LOCAL
*Sep 19 18:44:14.568: [76]PPPoE 63: Segment (SSS class): UPDATED
*Sep 19 18:44:14.568: [76]PPPoE 63: Segment (SSS class): BOUND
*Sep 19 18:44:14.568: [76]PPPoE 63: data path set to Virtual Access
*Sep 19 18:44:14.569: [76]PPPoE 63: State LCP_NEGOTIATION Event SSM UPDATED
*Sep 19 18:44:14.569: Vi2.1 PPP: Phase is AUTHENTICATING, Authenticated User
*Sep 19 18:44:14.569: Vi2.1 PAP: O AUTH-ACK id 78 len 5
*Sep 19 18:44:14.569: Vi2.1 PPP: Reducing MTU to peer's MRU
*Sep 19 18:44:14.569: [76]PPPoE 63: AAA get dynamic attrs
*Sep 19 18:44:14.569: Vi2.1 PPP: Phase is UP
*Sep 19 18:44:14.569: Vi2.1 IPCP: Protocol configured, start CP. state[Initial]
*Sep 19 18:44:14.569: Vi2.1 IPCP: Event[OPEN] State[Initial to Starting]
*Sep 19 18:44:14.569: Vi2.1 IPCP: O CONFREQ [Starting] id 1 len 10
*Sep 19 18:44:14.569: Vi2.1 IPCP: Address 192.168.1.1 (0x0306C0A80101)
*Sep 19 18:44:14.569: Vi2.1 IPCP: Event[UP] State[Starting to REQsent]
*Sep 19 18:44:14.569: [76]PPPoE 63: State PTA_BINDING Event STATIC BIND RESPONSE
```

```
*Sep 19 18:44:14.569: [76]PPPoE 63: Connected PTA
<snip>
*Sep 19 18:44:14.572: Vi2.1 IPCP: Event[Receive ConfReq+] State[ACKrcvd to Open]
*Sep 19 18:44:14.595: Vi2.1 IPCP: State is Open
*Sep 19 18:44:14.595: PPPoE : ipfib_encapstr prepared
*Sep 19 18:44:14.596: Vi2.1 Added to neighbor route AVL tree: topoid 0, address 192.168.1.2
*Sep 19 18:44:14.596: Vi2.1 IPCP: Install route to 192.168.1.2
```

```
! Installing route to PPPoE client
```

```
BRAS#sh pppoe sess
```

```
 1 session in LOCALLY_TERMINATED (PTA) State
 1 session total
```

Uniq ID	PPPoE SID	RemMAC LocMAC	Port	VT	VA VA-st	State Type
76	63	0050.56ad. d867.d99f.6601	Gi0/0/1.47	10	Vi2.1 UP	PTA

```
BRAS#
```

```
BRAS#sh caller ip
```

```
Line User IP Address Local Number Remote Number <->
```

```
Vi2.1 cisco 192.168.1.2 - - in
```

```
BRAS# ping 192.168.1.2
```

```
Type escape sequence to abort.
```

```
Sending 5, 100-byte ICMP Echos to 192.168.1.2, timeout is 2 seconds:
```

```
!!!!!
```

```
Success rate is 100 percent (5/5), round-trip min/avg/max = 1/1/1 ms
```

## トラブルシューティング

現在、この設定に関する特定のトラブルシューティング情報はありません。ただし、PPPおよびPPPoEに関連する標準的なトラブルシューティングテクニックは、関連するデバッグを使用して適用できます。

## 関連情報

- [テクニカル サポートとドキュメント – Cisco Systems](#)