

# VoIP con IVR

## Sommario

[Introduzione](#)

[Prerequisiti](#)

[Requisiti](#)

[Componenti usati](#)

[Convenzioni](#)

[Configurazione](#)

[Esempio di rete](#)

[Configurazioni](#)

[Verifica](#)

[Uscita Raleigh5300A](#)

[Uscita SanJose 5300A](#)

[Uscita Raleigh3600A](#)

[Uscita SanJose 3640A](#)

[Risoluzione dei problemi](#)

[Comandi per la risoluzione dei problemi](#)

[Informazioni correlate](#)

## [Introduzione](#)

Questo documento mostra come configurare e risolvere i problemi relativi alle funzionalità di base di risposta vocale interattiva (IVR) in una rete VoIP con gateway. IVR è un termine utilizzato per descrivere sistemi che forniscono informazioni sotto forma di messaggi registrati su linee telefoniche in risposta all'input dell'utente sotto forma di parole pronunciate o di segnalazione multifrequenza a doppio tono (DTMF) (più comune). Sono esempi di banche che consentono di controllare il saldo da qualsiasi telefono e sistema automatico di quotazione delle azioni.

## [Prerequisiti](#)

### [Requisiti](#)

Nessun requisito specifico previsto per questo documento.

### [Componenti usati](#)

Le informazioni fornite in questo documento si basano sulle seguenti versioni software e hardware:

- Software Cisco IOS® versione 12.1(1) in esecuzione nei router.

Le informazioni discusse in questo documento fanno riferimento a dispositivi usati in uno specifico ambiente di emulazione. Su tutti i dispositivi menzionati nel documento la configurazione è stata ripristinata ai valori predefiniti. Se la rete è operativa, valutare attentamente eventuali conseguenze derivanti dall'uso dei comandi.

## Convenzioni

Per ulteriori informazioni sulle convenzioni usate, consultare il documento [Cisco sulle convenzioni nei suggerimenti tecnici](#).

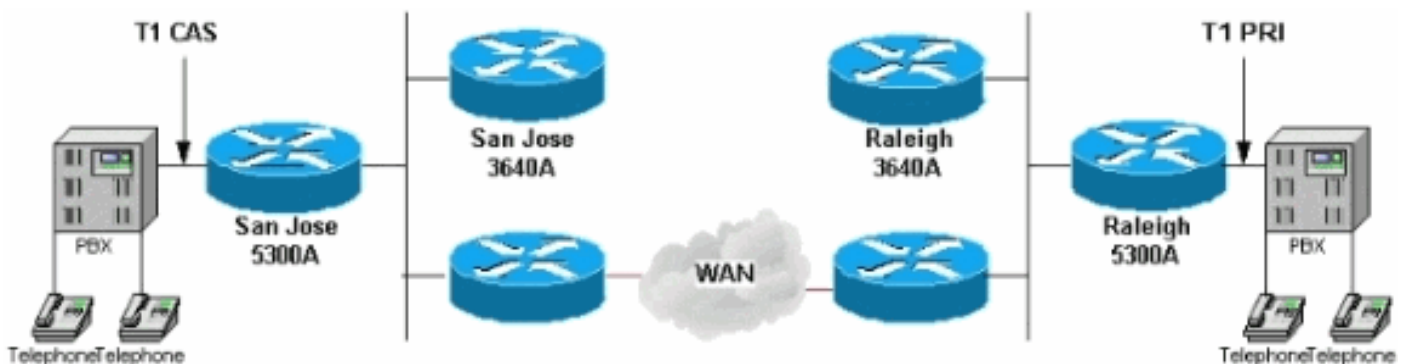
## Configurazione

In questa sezione vengono presentate le informazioni necessarie per configurare le funzionalità descritte più avanti nel documento.

**Nota:** per ulteriori informazioni sui comandi menzionati in questo documento, usare lo [strumento di ricerca](#) dei comandi (solo utenti [registrati](#)).

## Esempio di rete

Nel documento viene usata l'impostazione di rete mostrata nel diagramma:



Il Raleigh5300 di questo diagramma di rete esegue IVR utilizzando lo script interno **clid\_authen\_collect**. Questo script analizza l'ANI (Automatic Number Identification) di una chiamata in ingresso. Questa opzione consente alla chiamata che riceve i dispositivi di identificare il numero del chiamante e del servizio di identificazione del numero composto (DNIS, Dialed Number Identification Service) e il numero chiamato per raggiungere un determinato dispositivo. Quindi cerca di far corrispondere questi con un nome utente e una password. Se, come in questo caso, lo script non corrisponde a un nome utente e a una password, utilizza i prompt vocali per ottenere il numero di account e la password (spesso indicati come "PIN"). Quando un chiamante immette il nome utente e la password e viene autenticato, lo script richiede un numero di destinazione da chiamare.

La configurazione dell'IVR è molto semplice. In un ambiente reale, il nome utente e la password vengono archiviati in un server RADIUS (Remote Authentication Dial-In User Service). L'accesso con autenticazione, autorizzazione e accounting (AAA) H.323 punta a RADIUS e non a un account locale. A tale scopo, usare il comando **aaa authentication login h323 group radius** nella configurazione del router con IVR.

L'applicazione IVR è configurata con il comando **dial-peer voice 1**. In questo caso, punta allo script **clid\_auto\_collect**. Nel software sono disponibili varie configurazioni per IVR. Immettere il comando

exec [show call application voice \[summary\]](#) per verificare questa condizione. per ulteriori informazioni, fare riferimento a [Configurazione della risposta vocale interattiva per le piattaforme Cisco Access](#).

## [Configurazioni](#)

Nel documento vengono usate queste configurazioni:

- [Raleigh 5300A](#)
- [Raleigh 3640A](#)
- [San Jose 5300A](#)
- [San Jose 3640A](#)

### Raleigh 5300A

```
Raleigh5300A#show run
Building configuration...

Current configuration:
!
! Last configuration change at 00:42:21 UTC Tue Mar 28
2000
! NVRAM config last updated at 00:42:22 UTC Tue Mar 28
2000
!
version 12.1
service timestamps debug datetime msec
service timestamps log datetime msec
no service password-encryption
!
hostname Raleigh5300A
!
logging buffered 50000 debugging
AAA new-model
AAA authentication login default none
AAA authentication login h323 local
enable secret password !--- Choose a strong password
with at least one capital letter, !--- one number, and
one special character. ! username 1234 password 0 5678
spe 1/0 1/7 firmware location
system:/ucode/mica_port_firmware ! ! resource-pool
disable ! ! ! ! ! clock calendar-valid ip subnet-zero !
isdn switch-type primary-5ess isdn voice-call-failure 0
mta receive maximum-recipients 0 ! ! controller T1 0
framing esf clock source line primary linecode b8zs pri-
group timeslots 1-24 ! controller T1 1 clock source line
secondary 1 ! controller T1 2 ! controller T1 3 ! !
voice-port 0:D ! ! dial-peer voice 1 pots application
clid_authen_collect incoming called-number 4085556400
answer-address 9195552001 destination-pattern
919#9195552... port 0:D prefix 919 ! dial-peer voice 2
voip destination-pattern 4085556400 tech-prefix 408#
session target ras ! num-exp 6... 4085556... !--- This
command is used to configure a Cisco IOS® gateway to
route the calls coming to a main direct inward dial
(DID) number to an AutoAttendant. gateway ! interface
Ethernet0 no ip address shutdown ! interface Serial0:23
no ip address ip mroute-cache isdn switch-type primary-
```

```
5ess isdn incoming-voice modem fair-queue 64 256 0 no
cdp enable ! interface FastEthernet0 ip address
172.16.120.2 255.255.255.0 duplex auto speed auto h323-
gateway voip interface h323-gateway voip id RALgk1
ipaddr 172.16.120.1 1718 h323-gateway voip h323-id
RAL5300A@cisco.com h323-gateway voip tech-prefix 919# !
ip classless ip route 172.16.110.0 255.255.255.0
172.16.120.10 no ip http server ! line con 0 transport
input none line 1 48 transport output lat pad telnet
rlogin udptn v120 lapb-ta line aux 0 line vty 0 4
password cisco ! ntp clock-period 17179842 ntp server
172.16.110.10 end
```

## Raleigh 3640A

```
Raleigh3640A#show run
Building configuration...
```

Current configuration:

```
!
version 12.1
service timestamps debug datetime msec
service timestamps log datetime msec
no service password-encryption
!
hostname Raleigh3640A
!
logging buffered 50000 debugging
enable secret password
!--- Choose a strong password with at least one capital
letter, !--- one number, and one special character. !!
!!! ip subnet-zero ! ip dvmrp route-limit 20000 !!!
!! interface Ethernet1/0 ip address 172.16.120.1
255.255.255.0 ! interface Serial1/0 no ip address no ip
mroute-cache no fair-queue ! interface TokenRing1/0 no
ip address shutdown ring-speed 16 ! ip classless ip
route 172.16.110.0 255.255.255.0 172.16.120.10 no ip
http server !! gatekeeper zone local RALgk1 cisco.com
zone remote SJgk1 cisco.com 172.16.110.1 1719 zone
prefix SJgk1 408..... gw-type-prefix 408#* no shutdown
!! line con 0 transport input none line aux 0 line vty
0 4 password cisco login ! ntp clock-period 17179856 ntp
server 172.16.110.10 end
```

## San Jose 5300A

```
SanJose5300A#show run
Building configuration...
```

Current configuration:

```
!
! Last configuration change at 00:15:49 UTC Tue Mar 28
2000
! NVRAM config last updated at 00:15:50 UTC Tue Mar 28
2000
!
version 12.1
service timestamps debug datetime msec
service timestamps log datetime msec
no service password-encryption
!
```

```
hostname SanJose5300A
!
logging buffered 50000 debugging
enable secret password
!--- Choose a strong password with at least one capital
letter, !--- one number, and one special character. !!
! resource-pool disable ! ! ! ! ! ip subnet-zero ! isdn
voice-call-failure 0 mta receive maximum-recipients 0 !
! controller T1 0 framing esf clock source line primary
linecode b8zs ds0-group 1 timeslots 1-4 type e&m-
immediate-start ! controller T1 1 clock source line
secondary 1 ! controller T1 2 ! controller T1 3 ! !
voice-port 0:1 ! ! dial-peer voice 1 pots answer-address
4085556001 destination-pattern 408#4085556... direct-
inward-dial port 0:1 prefix 6 ! dial-peer voice 2 voip
destination-pattern 9195552... tech-prefix 919# session
target ras ! num-exp 2... 9195552... gateway ! interface
Ethernet0 no ip address ! interface FastEthernet0 ip
address 172.16.110.2 255.255.255.0 duplex auto speed
auto h323-gateway voip interface h323-gateway voip id
SJgk1 ipaddr 172.16.110.1 1718 h323-gateway voip h323-id
SJ5300A@cisco.com h323-gateway voip tech-prefix 408# !
ip classless ip route 172.16.120.0 255.255.255.0
172.16.110.10 no ip http server ! ! ! line con 0
transport input none line aux 0 line vty 0 4 password
cisco login ! ntp clock-period 17179924 ntp server
172.16.110.10 end
```

## San Jose 3640A

```
SanJose3640A#show run
Building configuration...

Current configuration:
!
! NVRAM config last updated at 00:05:33 UTC Tue Mar 28
2000
!
version 12.1
service timestamps debug datetime msec
service timestamps log datetime msec
no service password-encryption
!
hostname SanJose3640A
!
boot system flash c3640-ix-mz.120-7.T
logging buffered 50000 debugging
enable secret password !--- Choose a strong password
with at least one capital letter, !--- one number, and
one special character. ! ! ! ! ! ip subnet-zero ! ip
dvmrp route-limit 20000 ! ! interface Ethernet1/0 ip
address 172.16.110.1 255.255.255.0 ! interface Serial1/0
no ip address no ip mroute-cache shutdown no fair-queue
! interface Ethernet1/1 no ip address shutdown ! ip
classless ip route 172.16.120.0 255.255.255.0
172.16.110.10 no ip http server ! tftp-server
flash:c3640-ix-mz.121-1.bin ! gatekeeper zone local
SJgk1 cisco.com zone remote RALgk1 cisco.com
172.16.120.1 1719 zone prefix RALgk1 919..... gw-type-
prefix 919#* no shutdown ! ! line con 0 transport input
none line aux 0 line vty 0 4 password cisco login ! ntp
clock-period 17179867 ntp server 172.16.110.10 end
```

## Verifica

Le informazioni contenute in questa sezione permettono di verificare che la configurazione funzioni correttamente.

Lo [strumento Output Interpreter](#) (solo utenti [registrati](#)) (OIT) supporta alcuni comandi **show**. Usare l'OIT per visualizzare un'analisi dell'output del comando **show**.

- [show gateway](#): visualizza lo stato corrente del gateway.
- [show gatekeeper call](#): visualizza lo stato di ciascuna chiamata in corso rilevata da un gatekeeper.
- [show gatekeeper gw-type-prefix](#): visualizza la tabella dei prefissi della tecnologia gateway.
- [show flash](#) - Visualizza il contenuto della memoria flash.
- [show call application voice clid auto collect](#): visualizza un elenco di applicazioni voce configurate.
- [show gatekeeper endpoints](#): visualizza lo stato di tutti gli endpoint registrati per un gatekeeper.
- [show log](#): visualizza l'output del comando **debug** dal buffer di registrazione quando i comandi di **debug** sono abilitati.
- [show call active voice \[brief\]](#): visualizza lo stato della chiamata per tutte le porte voce.
- [show debugging](#): visualizza i comandi di **debug** abilitati in un determinato momento.

Dopo aver immesso nei router le configurazioni mostrate in questo documento, verificare che la rete funzioni correttamente. Questi comandi e il rispettivo output mostrano la corretta implementazione delle configurazioni descritte in questo documento.

I problemi più comuni di IVR includono:

- L'applicazione non è configurata correttamente nel dial-peer POTS (Plain Old Telephone Service). Verificare che la chiamata di telefonia in ingresso corrisponda al dial-peer POTS con l'applicazione. Il dial-peer POTS corrisponde al primo dial-peer con il comando port corrispondente nella configurazione o se il numero chiamato corrisponde al sottocomando dial-peer **incoming call-number<number>**. Verificare che l'applicazione esista effettivamente tramite il comando [show call application voice \[summary\]](#). Verificare che il nome dell'applicazione non contenga un errore di sintassi.
- Accertarsi che la connessione diretta verso l'interno non sia configurata sulle porte del dial-peer.
- Accertatevi che i file audio appropriati siano caricati in Flash.
- Verificare che l'autenticazione con nome utente e password sia configurata correttamente.

## Uscita Raleigh5300A

```
Raleigh5300A#show gateway
Gateway  RAL5300A@cisco.com  is registered to Gatekeeper RALgk1
```

```
Alias list (CLI configured)
H323-ID  RAL5300A@cisco.com
Alias list (last RCF)
H323-ID  RAL5300A@cisco.com
```

H323 resource thresholding is Disabled

Raleigh5300A#**show flash**

System flash directory:

| File | Length  | Name/status           |
|------|---------|-----------------------|
| 1    | 7084904 | c5300-is-mz.121-1.bin |
| 2    | 23186   | enter_account.au      |
| 3    | 38087   | enter_destination.au  |
| 4    | 20414   | enter_pin.au          |
| 5    | 17513   | auth_failed.au        |

[7184432 bytes used, 1204176 available, 8388608 total]  
8192K bytes of processor board System flash (Read/Write)

Raleigh5300A#**show call application voice clid\_authen\_collect**

Idle call list has 1 calls on it.

Application clid\_authen\_collect

The script is compiled into the image

It has 0 calls active.

The TCL Script is:

```
-----  
# clid_authen_collect.tcl  
#-----  
# September 1998, David Ramsthaller  
#  
# Copyright (c) 1998, 1999 by cisco Systems, Inc.  
# All rights reserved.  
#-----  
# Mimic the clid_authen_collect script in the SP1.0 release.  
#  
# It authenticates using (ani, dnis) for (account, password). If  
# that fails, it collects account and pin number, then authenticates  
# using (account, pin).  
#  
# If authentication passes, it collects the destination number and  
# places the call.  
#  
# The main routine is at the bottom. Start reading the script there.  
#
```

```
proc do_get_account {} {  
    global state  
    global account  
  
    set prompt(url) flash:enter_account.au  
    set prompt(interrupt) true  
    set prompt(abortKey) *  
    set prompt(terminationKey) #  
    set patterns(account) .+  
    set event [promptAndCollect prompt info patterns ]  
  
    if {$event == "collect success"} {  
        set state get_pin  
        set account $info(digits)  
        return 0  
    }  
}
```

```

if {$event == "collect aborted"} {
    set state get_account
    return 0
}

if {$event == "collect fail" || $event == "collect timeout"} {
    set state get_account
    return 0
}
set state end
return 0
}

proc do_get_pin {} {
    global state
    global pin

    set prompt(url) flash:enter_pin.au
    set prompt(interrupt) true
    set prompt(abortKey) *
    set prompt(terminationKey) #
    set patterns(account) .+
    set event [promptAndCollect prompt info patterns ]

    if {$event == "collect success"} {
        set state authenticate
        set pin $info(digits)
        return 0
    }

    if {$event == "collect aborted"} {
        set state get_account
        return 0
    }

    if {$event == "collect fail" || $event == "collect timeout"} {
        # timeout
        if {$info(code) == 102} {
            set state get_pin
            return 0
        }

        # invalid number
        if {$info(code) == 28} {
            set state get_pin
            return 0
        }
    }

    set state end
    return 0
}

proc do_authenticate {} {
    global state

```



```

global pin
global account

set event [authenticate $account $pin info]

if { $event == "authenticated" } {
    set state authen_pass
    return 0
}

if {$event == "authentication failed"} {
    set state authen_fail
    return 0
}

set state end
return 0
}

proc do_get_dest {} {
    global state
    global destination

    set prompt(url) flash:enter_destination.au
    set prompt(interrupt) true
    set prompt(abortKey) *
    set prompt(terminationKey) #
    set prompt(dialPlan) true

    set event [promptAndCollect prompt info ]

    if {$event == "collect success"} {
        set state place_call
        set destination $info(digits)
        return 0
    }

    if {$event == "collect aborted"} {
        set state get_dest
        return 0
    }

    if {$event == "collect fail" || $event == "collect timeout"} {
        set state get_dest
        return 0
    }
    set state end
    return 0
}

proc do_authen_pass {} {
    global state
    global destination

```

```

set dnislen [string len [dnis]]

if { [did] && $dnislen } {
    set destination [dnis]
    set state place_call
} else {
    set state get_dest
}
return 0
}

proc do_place_call {} {
    global state
    global destination

    set event [placeCall $destination callInfo info]

    if {$event == "active"} {
        set state active
        return 0
    }
    if {$event == "call fail"} {
        set state place_fail
        return 0
    }

    set state end
    return 0
}

proc do_active_notimer {} {
    global state

    set event [waitEvent]
    while { $event == "digit" } {
        set event [waitEvent]
    }
    set state end
    return 0
}

proc do_active_last_timer {} {
    global state

    set event [startTimer [creditTimeLeft] info]
    while { $event == "digit" } {
        set event [startTimer $info(timeLeft) info]
    }
    if { $event == "timeout" } {
        clearOutgoingLeg retInfo
        set state out_of_time
    } else {
        set state end
    }
}

```

```

    return 0
}

proc do_active_timer {} {
    global state

    if { [creditTimeLeft] < 10 } {
        do_active_last_timer
        return 0
    }
    set delay [expr [creditTimeLeft] - 10]
    set event [startTimer $delay info]
    while { $event == "digit" } {
        set event [startTimer $info(timeLeft) info]
    }
    if { $event == "timeout" } {
        insertMessage flash:beep.au retInfo
        do_active_last_timer
    } else {
        set state end
    }

    return 0
}

proc do_active {} {
    global state

    if { ( [creditTimeLeft] == "unlimited") ||
        ([creditTimeLeft] == "uninitialized") } {
        do_active_notimer
    } else {
        do_active_timer
    }
    return 0
}

proc do_out_of_time {} {
    global state

    set prompt(url) flash:out_of_time.au
    set prompt(playComplete) true
    set event [promptAndCollect prompt info ]
    set state end
    return 0
}

proc do_authen_fail {} {
    global state

    set prompt(url) flash:auth_failed.au
    set prompt(playComplete) true
    set event [promptAndCollect prompt info ]

```

```

    set state end
    return 0
}

proc do_place_fail {} {
    global state

    playFailureTone 5 retInfo
    set state end
    return 0
}

#-----
# And here is the main loop
#

acceptCall

set event [authenticate [ani] [dnis] info]

if {$event != "authenticated"} {
    set state get_account
} else {
    set state authen_pass
}

while {$state != "end"} {
    puts "cid([callID]) running state $state"
    if {$state == "get_account"} {
        do_get_account
    } elseif {$state == "get_pin"} {
        do_get_pin
    } elseif {$state == "authenticate"} {
        do_authenticate
    } elseif {$state == "get_dest"} {
        do_get_dest
    } elseif {$state == "place_call"} {
        do_place_call
    } elseif {$state == "active"} {
        do_active
    } elseif {$state == "authen_fail" } {
        do_authen_fail
    } elseif {$state == "authen_pass" } {
        do_authen_pass
    } elseif {$state == "place_fail"} {
        do_place_fail
    } elseif {$state == "out_of_time"} {
        do_out_of_time
    } else {
        break
    }
}
}

```

Sul router Raleigh sono abilitati alcuni comandi di **debug**. Il comando **show debug** visualizza

quanto segue:

Raleigh5300A#**show debug**

```
General OS: AAA Authentication debugging is on
ISDN: ISDN Q931 packets debugging is on
ISDN Q931 packets debug DSLs. (On/Off/No DSL:1/0/-) DSL 0 --> 7 1 - - - - -
- -
H.323 RAS: H.323 RAS Messages debugging is on
voip AAA: voip AAA debugging is on
voip: voip ccAPI function enter/exit debugging is on
ivr: ivr state transitions debugging is on
```

Si supponga che venga effettuata una chiamata mentre è abilitata la visualizzazione dei debug. Questo è l'output che si verifica con una chiamata di questo tipo:

Raleigh5300A#**show log**

```
Syslog logging: enabled (0 messages dropped, 0 flushes, 0 overruns)
  Console logging: level debugging, 5422 messages logged
  Monitor logging: level debugging, 0 messages logged
  Buffer logging: level debugging, 5422 messages logged
  Trap logging: level informational, 230 message lines logged
```

Log Buffer (50000 bytes):

```
Mar 28 00:44:50.741: RASLib::ras_sendto: msg length 76
                    from 172.16.120.2:49831 to 172.16.120.1:1719
Mar 28 00:44:50.741: RASLib::RASSendRRQ: RRQ (seq# 12164)
                    sent to 172.16.120.1
Mar 28 00:44:50.745: RASLib::RASRecvData: successfully
                    rcvd message of length 52 from 172.16.120.1:1719
Mar 28 00:44:50.745: RASLib::RASRecvData: RCF (seq# 12164)
                    rcvd from [172.16.120.1:1719] on sock [0x6179E6A4]
Mar 28 00:45:18.433: ISDN Se0:23: RX <- SETUP pd = 8 callref = 0x02
Mar 28 00:45:18.433: Bearer Capability i = 0x8090A2
Mar 28 00:45:18.433: Channel ID i = 0xA98393
Mar 28 00:45:18.433: Calling Party Number i = 0x2180,
                    '9195552010', Plan:ISDN, Type:National
Mar 28 00:45:18.433: Called Party Number i = 0xA1,
                    '4085556400', Plan:ISDN, Type:National
Mar 28 00:45:18.437: ISDN Se0:23: TX -> CALL_PROC pd = 8 callref = 0x8002
Mar 28 00:45:18.437: Channel ID i = 0xA98393
Mar 28 00:45:18.437: ISDN Se0:23: TX -> ALERTING pd = 8 callref = 0x8002
Mar 28 00:45:18.437: cc_api_call_setup_ind (vdbPtr=0x61B9ADAC,
                    callInfo={called=4085556400,
                    calling=9195552010, fdest=0 peer_tag=1}, callID=0x61A088C4)
Mar 28 00:45:18.441: start_h323_accounting:
Mar 28 00:45:18.441: start_h323_ccapi_accounting: Error: Null userp
Mar 28 00:45:18.441: cc_process_call_setup_ind (event=0x61BB59E8)
                    handed call to app "clid_authen_collect"
Mar 28 00:45:18.441: App clid_authen_collect: Handling callID 52
Mar 28 00:45:18.441: callingNumber=9195552010, calledNumber=4085556400,
                    redirectNumber=
Mar 28 00:45:18.441: accountNumber=, finalDestFlag=0,
                    guid=1acb.27d8.98f4.006b.0000.0000.2071.a5e8
Mar 28 00:45:18.441: peer_tag=1
Mar 28 00:45:18.441: ccCallHandoff (callID=0x34)
Mar 28 00:45:18.445: ./acceptCall/
Mar 28 00:45:18.445: Accepting CallID=52
Mar 28 00:45:18.445: ccCallSetupAck (callID=0x34)
```

```
Mar 28 00:45:18.445: ccCallProceeding (callID=0x34, prog_ind=0x0)
Mar 28 00:45:18.445: ccCallConnect (callID=0x34)
Mar 28 00:45:18.445: :/ani/
Mar 28 00:45:18.445: :/dnis/
Mar 28 00:45:18.445: :[authenticate]
Mar 28 00:45:18.445: authenticate
Mar 28 00:45:18.445:     account=9195552010
Mar 28 00:45:18.445:     password=4085556400
Mar 28 00:45:18.445: start_authentication service: ivr tcl authentication
Mar 28 00:45:18.445: AAA: parse name= idb type=-1 tty=-1
Mar 28 00:45:18.445: AAA/MEMORY: create_user (0x61EBED14) user='9195552010'
    ruser='' port='' rem_addr=''
    authen_type=ASCII service=LOGIN priv=0
Mar 28 00:45:18.445: AAA/AUTHEN/START (2776990538):
    port='' list='h323' action=LOGIN service=LOGIN
Mar 28 00:45:18.445: AAA/AUTHEN/START (2776990538): found list h323
Mar 28 00:45:18.445: AAA/AUTHEN/START (2776990538): Method=LOCAL
Mar 28 00:45:18.445: AAA/AUTHEN (2776990538): User not found, end of method list
Mar 28 00:45:18.445: AAA/AUTHEN (2776990538): status = FAIL
Mar 28 00:45:18.445: voip_authenticate: Authentication server ERROR: server MSG:
Mar 28 00:45:18.445: AAA/MEMORY: free_user (0x61EBED14)
    user='9195552010' ruser='' port=''
    rem_addr='' authen_type=ASCII service=LOGIN priv=0
Mar 28 00:45:18.449: ISDN Se0:23: TX -> CONNECT pd = 8 callref = 0x8002
Mar 28 00:45:18.449: cid(52) ta_get_event returning authentication failed
Mar 28 00:45:18.449: :[callID]
Mar 28 00:45:18.449: :/puts/
Mar 28 00:45:18.449: cid( 52) running state get_account
Mar 28 00:45:18.453: TA_PromptCmd. CallID=52

Mar 28 00:45:18.453: ccCallApp (callID=0x34)
Mar 28 00:45:18.453: prompt and collect app got callID 52
Mar 28 00:45:18.453:     Playing prompt enter_account.au
Mar 28 00:45:18.453:     Prompt interrupt enabled
Mar 28 00:45:18.453:     No return on play complete
Mar 28 00:45:18.453:     Not matching against dial plan
Mar 28 00:45:18.453:     Abort key is * Termination key is #
Mar 28 00:45:18.453:     Matching against 1 patterns.
Mar 28 00:45:18.453:     Pattern .+
Mar 28 00:45:18.453: ccCallSetContext (callID=0x34, context=0x61A3AAA4)
Mar 28 00:45:18.453: ms_create() Iniz ply_timer
Mar 28 00:45:18.453: ccAssociateStream (callID=0x34 coder=5
    vad=0 recordFunc=0x0 evQ=0x61BE4420)
Mar 28 00:45:18.453: cc_API_call_associated (vdbPtr=0x61B9ADAC,
    callID=0x34, disp=0)
Mar 28 00:45:18.453: ms_associateDone(): xmitFunc = playFunc 0x60B8B358
Mar 28 00:45:18.453: ms_associateDone(): CallID 52 First Buf Play
    at 6d07h of enter_account.au
Mar 28 00:45:18.453: ms_associateDone() 6d07h, Tstart(ply: iSndDly 1000, pSnce 0)
Mar 28 00:45:18.545: ISDN Se0:23: RX <- CONNECT_ACK pd = 8 callref = 0x02
Mar 28 00:45:18.545: ISDN Se0:23: CALL_PROGRESS: CALL_CONNECTED
    call id 0x1B, bchan -1, dsl 0
Mar 28 00:45:19.453: $ $ms_process() >>ms_start_play()
Mar 28 00:45:19.453: ms_start_play() 6d07h mgdTstop(ply)
Mar 28 00:45:20.241: cc_api_call_digit_begin (vdbPtr=0x61B9ADAC,
    callID=0x34, digit=1,
    flags=0x1, timestamp=0xDB1154A6, expiration=0x0)
Mar 28 00:45:20.245: pcapp CallID 52 event CC_EV_CALL_DIGIT_BEGIN ignored
Mar 28 00:45:20.353: cc_api_call_digit (vdbPtr=0x61B9ADAC,
    callID=0x34, digit=1, duration=160) digit=1
Mar 28 00:45:20.353: ms_stop_play() call 52 mgdTstop at 6d07h
Mar 28 00:45:20.353: ms_stop_play(): Play Stopped at 6d07h
Mar 28 00:45:20.353: ccDisassociateStream (callID=0x34)
```

```
Mar 28 00:45:20.521: cc_api_call_digit_begin (vdbPtr=0x61B9ADAC,
      callID=0x34, digit=2,
      flags=0x1, timestamp=0xDB1154A6, expiration=0x0)
Mar 28 00:45:20.525: pcapp CallID 52 event CC_EV_CALL_DIGIT_BEGIN ignored
Mar 28 00:45:20.593: cc_api_call_digit (vdbPtr=0x61B9ADAC,
      callID=0x34, digit=2, duration=120) digit=2
Mar 28 00:45:20.781: cc_api_call_digit_begin (vdbPtr=0x61B9ADAC,
      callID=0x34, digit=3,
      flags=0x1, timestamp=0xDB1154A6, expiration=0x0)
Mar 28 00:45:20.785: pcapp CallID 52 event CC_EV_CALL_DIGIT_BEGIN ignored
Mar 28 00:45:20.853: cc_api_call_digit (vdbPtr=0x61B9ADAC,
      callID=0x34, digit=3, duration=120) digit=3
Mar 28 00:45:21.101: cc_api_call_digit_begin (vdbPtr=0x61B9ADAC,
      callID=0x34, digit=4,
      flags=0x1, timestamp=0xDB1154A6, expiration=0x0)
Mar 28 00:45:21.105: pcapp CallID 52 event CC_EV_CALL_DIGIT_BEGIN ignored
Mar 28 00:45:21.193: cc_api_call_digit (vdbPtr=0x61B9ADAC,
      callID=0x34, digit=4, duration=140) digit=4
Mar 28 00:45:21.553: cc_api_call_digit_begin (vdbPtr=0x61B9ADAC,
      callID=0x34, digit=#,
      flags=0x1, timestamp=0xDB1154A6, expiration=0x0)
Mar 28 00:45:21.553: pcapp CallID 52 event CC_EV_CALL_DIGIT_BEGIN ignored
Mar 28 00:45:21.673: cc_api_call_digit (vdbPtr=0x61B9ADAC,
      callID=0x34, digit=#, duration=170) digit=#
Mar 28 00:45:21.673: pcapp CallID 52 returning PCAPP_MATCHED. string=1234
Mar 28 00:45:21.673: ccCallAppReturn (callID=0x34)
Mar 28 00:45:21.673: ms_delete() invoking ms_stop_play() for just in case...
Mar 28 00:45:21.673: ms_stop_play() call 52 mgdTstop at 6d07h
Mar 28 00:45:21.673: ms_delete(): mc_delete_dynamicS() mc_delete_read()
Mar 28 00:45:21.673: cid(52) ta_get_event returning collect success
Mar 28 00:45:21.677: :[callID]
Mar 28 00:45:21.677: :/puts/
Mar 28 00:45:21.677: cid( 52) running state get_pin
Mar 28 00:45:21.677: ta_PromptCmd. CallID=52

Mar 28 00:45:21.677: ccCallApp (callID=0x34)
Mar 28 00:45:21.681: prompt and collect app got callID 52
Mar 28 00:45:21.681:     Playing prompt enter_pin.au
Mar 28 00:45:21.681:     Prompt interrupt enabled
Mar 28 00:45:21.681:     No return on play complete
Mar 28 00:45:21.681:     Not matching against dial plan
Mar 28 00:45:21.681:     Abort key is *     Termination key is #
Mar 28 00:45:21.681:     Matching against 1 patterns.
Mar 28 00:45:21.681:     Pattern .+
Mar 28 00:45:21.681: ccCallSetContext (callID=0x34, context=0x61A986B0)
Mar 28 00:45:21.681: ms_create() Iniz ply_timer
Mar 28 00:45:21.681: ccAssociateStream (callID=0x34 coder=5 vad=0
      recordFunc=0x0 evQ=0x61BE4420)
Mar 28 00:45:21.681: cc_api_call_associated (vdbPtr=0x61B9ADAC,
      callID=0x34, disp=0)
Mar 28 00:45:21.681: ms_associateDone(): xmitFunc = playFunc 0x60B8B358
Mar 28 00:45:21.681: ms_associateDone(): CallID 52 First Buf
      Play at 6d07h of enter_pin.au
Mar 28 00:45:21.681: ms_associateDone() 6d07h, Tstart(ply:
      iSndDly 1000, pSnce 0)
Mar 28 00:45:22.681: $ $ms_process() >>ms_start_play()
Mar 28 00:45:22.681: ms_start_play() 6d07h mgdTstop(ply)
Mar 28 00:45:23.433: cc_api_call_digit_begin (vdbPtr=0x61B9ADAC, callID=0x34,
      digit=5, flags=0x1, timestamp=0xDB1154A6, expiration=0x0)
Mar 28 00:45:23.433: pcapp CallID 52 event CC_EV_CALL_DIGIT_BEGIN ignored
Mar 28 00:45:23.533: cc_api_call_digit (vdbPtr=0x61B9ADAC,
      callID=0x34, digit=5, duration=150) digit=5
Mar 28 00:45:23.533: ms_stop_play() call 52 mgdTstop at 6d07h
```

```
Mar 28 00:45:23.533: ms_stop_play(): Play Stopped at 6d07h
Mar 28 00:45:23.533: ccDisassociateStream (callID=0x34)
Mar 28 00:45:23.693: cc_api_call_digit_begin (vdbPtr=0x61B9ADAC,
      callID=0x34, digit=6,
      flags=0x1, timestamp=0xDB1154A6, expiration=0x0)
Mar 28 00:45:23.693: pcapp CallID 52 event CC_EV_CALL_DIGIT_BEGIN ignored
Mar 28 00:45:23.793: cc_api_call_digit (vdbPtr=0x61B9ADAC,
      callID=0x34, digit=6, duration=150) digit=6
Mar 28 00:45:24.041: cc_api_call_digit_begin (vdbPtr=0x61B9ADAC,
      callID=0x34, digit=7, flags=0x1,
      timestamp=0xDB1154A6, expiration=0x0)
Mar 28 00:45:24.045: pcapp CallID 52 event CC_EV_CALL_DIGIT_BEGIN ignored
Mar 28 00:45:24.121: cc_api_call_digit (vdbPtr=0x61B9ADAC,
      callID=0x34, digit=7, duration=130) digit=7
Mar 28 00:45:24.321: cc_api_call_digit_begin (vdbPtr=0x61B9ADAC,
      callID=0x34, digit=8,
      flags=0x1, timestamp=0xDB1154A6, expiration=0x0)
Mar 28 00:45:24.325: pcapp CallID 52 event CC_EV_CALL_DIGIT_BEGIN ignored
Mar 28 00:45:24.421: cc_api_call_digit (vdbPtr=0x61B9ADAC,
      callID=0x34, digit=8, duration=150) digit=8
Mar 28 00:45:24.653: cc_api_call_digit_begin (vdbPtr=0x61B9ADAC,
      callID=0x34, digit=#,
      flags=0x1, timestamp=0xDB1154A6, expiration=0x0)
Mar 28 00:45:24.653: pcapp CallID 52 event CC_EV_CALL_DIGIT_BEGIN ignored
Mar 28 00:45:24.741: cc_api_call_digit (vdbPtr=0x61B9ADAC,
      callID=0x34, digit=#, duration=140) digit=#
Mar 28 00:45:24.745: pcapp CallID 52 returning PCAPP_MATCHED. string=5678
Mar 28 00:45:24.745: ccCallAppReturn (callID=0x34)
Mar 28 00:45:24.745: ms_delete() invoking ms_stop_play() for just in case...
Mar 28 00:45:24.745: ms_stop_play() call 52 mgdTstop at 6d07h
Mar 28 00:45:24.745: ms_delete(): mc_delete_dynamicS() mc_delete_read()
Mar 28 00:45:24.745: cid(52) ta_get_event returning collect success
Mar 28 00:45:24.745: :[callID]
Mar 28 00:45:24.745: :/puts/
Mar 28 00:45:24.745: cid( 52) running state authenticate
Mar 28 00:45:24.749: :[authenticate]
Mar 28 00:45:24.749: authenticate
Mar 28 00:45:24.749:     account=1234
Mar 28 00:45:24.749:     password=5678
Mar 28 00:45:24.749: start_authetication service: ivr tcl authentication
Mar 28 00:45:24.749: AAA: parse name= idb type=-1 tty=-1
Mar 28 00:45:24.749: AAA/MEMORY: create_user (0x61B0354C) user='1234' ruser=''
      port='' rem_addr='' authen_type=ASCII service=LOGIN priv=0
Mar 28 00:45:24.749: AAA/AUTHEN/START (3238629809): port=''
      list='h323' action=LOGIN service=LOGIN
Mar 28 00:45:24.749: AAA/AUTHEN/START (3238629809): found list h323
Mar 28 00:45:24.749: AAA/AUTHEN/START (3238629809): Method=LOCAL
Mar 28 00:45:24.749: AAA/AUTHEN (3238629809): status = GETPASS
Mar 28 00:45:24.749: AAA/AUTHEN/CONT (3238629809): continue_login (user='1234')
Mar 28 00:45:24.749: AAA/AUTHEN (3238629809): status = GETPASS
Mar 28 00:45:24.749: AAA/AUTHEN/CONT (3238629809): Method=LOCAL
Mar 28 00:45:24.749: AAA/AUTHEN (3238629809): status = PASS
Mar 28 00:45:24.749: AAA/MEMORY: free_user (0x61B0354C) user='1234' ruser=''
      port='' rem_addr='' authen_type=ASCII service=LOGIN priv=0
Mar 28 00:45:24.749: cid(52) ta_get_event returning authenticated
Mar 28 00:45:24.753: :[callID]
Mar 28 00:45:24.753: :/puts/
Mar 28 00:45:24.753: cid( 52) running state authen_pass
Mar 28 00:45:24.753: :/dnis/
Mar 28 00:45:24.753: :/did/
Mar 28 00:45:24.757: :[callID]
Mar 28 00:45:24.757: :/puts/
Mar 28 00:45:24.757: cid( 52) running state get_dest
Mar 28 00:45:24.757: ta_PromptCmd. CallID=52
```



```
Mar 28 00:45:24.757: ccCallApp (callID=0x34)
Mar 28 00:45:24.757: prompt and collect app got callID 52
Mar 28 00:45:24.757:     Playing prompt enter_destination.au
Mar 28 00:45:24.757:     Prompt interrupt enabled
Mar 28 00:45:24.757:     No return on play complete
Mar 28 00:45:24.757:     Matching against dial plan
Mar 28 00:45:24.757:     Abort key is *   Termination key is #
Mar 28 00:45:24.757:     Matching against 0 patterns.
Mar 28 00:45:24.757: ccCallSetContext (callID=0x34, context=0x61A3AAA4)
Mar 28 00:45:24.761: ms_create() Iniz ply_timer
Mar 28 00:45:24.761: ccAssociateStream (callID=0x34 coder=5 vad=0
    recordFunc=0x0 evQ=0x61BE4420)
Mar 28 00:45:24.761: cc_api_call_associated (vdbPtr=0x61B9ADAC,
    callID=0x34, disp=0)
Mar 28 00:45:24.761: ms_associateDone(): xmitFunc = playFunc 0x60B8B358
Mar 28 00:45:24.761: ms_associateDone(): CallID 52 First Buf Play
    at 6d07h of enter_destination.au
Mar 28 00:45:24.761: ms_associateDone() 6d07h, Tstart(ply: iSndDly 1000, pSnce 0)
Mar 28 00:45:25.761: $ $ms_process() >>ms_start_play()
Mar 28 00:45:25.761: ms_start_play() 6d07h mgdTstop(ply)
Mar 28 00:45:29.393: cc_api_call_digit_begin (vdbPtr=0x61B9ADAC,
    callID=0x34, digit=6,
    flags=0x1, timestamp=0xDB1154A6, expiration=0x0)
Mar 28 00:45:29.393: pcapp CallID 52 event CC_EV_CALL_DIGIT_BEGIN ignored
Mar 28 00:45:29.573: cc_api_call_digit (vdbPtr=0x61B9ADAC,
    callID=0x34, digit=6, duration=230) digit=6
Mar 28 00:45:29.573: ms_stop_play() call 52 mgdTstop at 6d07h
Mar 28 00:45:29.573: ms_stop_play(): Play Stopped at 6d07h
Mar 28 00:45:29.573: ccDisassociateStream (callID=0x34)
Mar 28 00:45:29.801: cc_api_call_digit_begin (vdbPtr=0x61B9ADAC,
    callID=0x34, digit=4,
    flags=0x1, timestamp=0xDB1154A6, expiration=0x0)
Mar 28 00:45:29.805: pcapp CallID 52 event CC_EV_CALL_DIGIT_BEGIN ignored
Mar 28 00:45:29.921: cc_api_call_digit (vdbPtr=0x61B9ADAC, callID=0x34,
    digit=4, duration=170) digit=4
Mar 28 00:45:30.181: cc_api_call_digit_begin (vdbPtr=0x61B9ADAC,
    callID=0x34, digit=0,
    flags=0x1, timestamp=0xDB1154A6, expiration=0x0)
Mar 28 00:45:30.185: pcapp CallID 52 event CC_EV_CALL_DIGIT_BEGIN ignored
Mar 28 00:45:30.281: cc_api_call_digit (vdbPtr=0x61B9ADAC, callID=0x34,
    digit=0, duration=150) digit=0
Mar 28 00:45:30.533: cc_api_call_digit_begin (vdbPtr=0x61B9ADAC,
    callID=0x34, digit=0,
    flags=0x1, timestamp=0xDB1154A6, expiration=0x0)
Mar 28 00:45:30.533: pcapp CallID 52 event CC_EV_CALL_DIGIT_BEGIN ignored
Mar 28 00:45:30.673: cc_api_call_digit (vdbPtr=0x61B9ADAC, callID=0x34,
    digit=0, duration=190) digit=0
Mar 28 00:45:30.673: pcapp CallID 52 returning PCAPP_MATCHED. string=6400
Mar 28 00:45:30.673: ccCallAppReturn (callID=0x34)
Mar 28 00:45:30.673: ms_delete() invoking ms_stop_play() for just in case...
Mar 28 00:45:30.673: ms_stop_play() call 52 mgdTstop at 6d07h
Mar 28 00:45:30.673: ms_delete(): mc_delete_dynamicS() mc_delete_read()
Mar 28 00:45:30.673: cid(52) ta_get_event returning collect success
Mar 28 00:45:30.677: :[callID]
Mar 28 00:45:30.677: :/puts/
Mar 28 00:45:30.677: cid( 52) running state place_call
Mar 28 00:45:30.677: :[placeCall]
Mar 28 00:45:30.677: Placing call for callID 52 to destination=6400
Mar 28 00:45:30.677: ccCallApp (callID=0x34)
Mar 28 00:45:30.681: placecall CallID 52 got event CC_EV_CALL_HANDOFF
Mar 28 00:45:30.681: ccCallSetContext (callID=0x34, context=0x61EBED14)
Mar 28 00:45:30.681: Matched peers(1)
```

Mar 28 00:45:30.681: placecall pc\_setupPeer cid(52), destPat(4085556400), matched(10),  
prefix(), peer(61C088AC)  
Mar 28 00:45:30.681: ccCallSetupRequest (Inbound call = 0x34, outbound peer =2, dest=,  
params=0x61A650F8 mode=0, \*callID=0x61BC6EF0)  
Mar 28 00:45:30.681: callingNumber=9195552010, calledNumber=4085556400, redirectNumber=  
Mar 28 00:45:30.681: accountNumber=1234, finalDestFlag=0,  
guid=1acb.27d8.98f4.006b.0000.0000.2071.a5e8  
Mar 28 00:45:30.681: peer\_tag=2  
Mar 28 00:45:30.681: ccIFCallSetupRequest: (vdbPtr=0x6174EC64, dest=,  
callParams={called=4085556400,  
calling=9195552010, fdest=0, voice\_peer\_tag=2}, mode=0x0)  
Mar 28 00:45:30.681: ccCallSetContext (callID=0x35, context=0x61C72B0C)  
Mar 28 00:45:30.681: placecall cid(52) state change PC\_CS\_INIT to PC\_CS\_CALL\_SETTING  
Mar 28 00:45:30.681: RASLib::ras\_sendto: msg length 115 from 172.16.120.2:49831  
to 172.16.120.1:1719  
Mar 28 00:45:30.685: RASLib::RASSendARQ: ARQ (seq# 12165) sent to 172.16.120.1  
Mar 28 00:45:30.685: start\_h323\_accounting:  
Mar 28 00:45:30.685: start\_h323\_ccapi\_accounting: Error: Null userp  
Mar 28 00:45:30.689: RASLib::RASRecvData: successfully rcvd message  
of length 7 from 172.16.120.1:1719  
Mar 28 00:45:30.689: RASLib::RASRecvData: RIP (seq# 12165) rcvd  
from [172.16.120.1:1719] on sock[6179E6A4]  
Mar 28 00:45:30.705: RASLib::RASRecvData: successfully rcvd message  
of length 24 from 172.16.120.1:1719  
Mar 28 00:45:30.705: RASLib::RASRecvData: ACF (seq# 12165) rcvd from  
[172.16.120.1:1719] on sock [0x6179E6A4]  
Mar 28 00:45:31.713: cc\_api\_call\_alert (vdbPtr=0x6174EC64, callID=0x35,  
prog\_ind=0x8, sig\_ind=0x1)  
Mar 28 00:45:31.713: placecall CallID 53 got event CC\_EV\_CALL\_ALERT  
Mar 28 00:45:31.713: ccConferenceCreate (confID=0x61BC6F40, callID1=0x34,  
callID2=0x35, tag=0x0)  
Mar 28 00:45:31.713: cc\_api\_bridge\_done (confID=0x14, srcIF=0x6174EC64, srcCallID=0x35,  
dstCallID=0x34, disposition=0, tag=0x0)  
Mar 28 00:45:31.713: placecall cid(52) state change PC\_CS\_CALL\_SETTING to  
PC\_CS\_CONFERENCING\_ALERT  
Mar 28 00:45:31.713: cc\_api\_bridge\_done (confID=0x14, srcIF=0x61B9ADAC, srcCallID=0x34,  
dstCallID=0x35, disposition=0, tag=0x0)  
Mar 28 00:45:31.713: cc\_api\_caps\_ind (dstVdbPtr=0x6174EC64, dstCallId=0x35,  
srcCallId=0x34, caps={codec=0xEBF7, fax\_rate=0xFF,  
vad=0x3, modem=0x3 codec\_bytes=48, signal\_type=2})  
Mar 28 00:45:31.717: placecall CallID 52 got event CC\_EV\_CONF\_CREATE\_DONE  
Mar 28 00:45:31.717: placecall cid(52) state change PC\_CS\_CONFERENCING\_ALERT  
to PC\_CS\_CONFERENCE\_ALERT  
Mar 28 00:45:32.321: cc\_api\_caps\_ind (dstVdbPtr=0x61B9ADAC, dstCallId=0x34,  
srcCallId=0x35, caps={codec=0x4, fax\_rate=0x2, vad=0x2, modem=0x1  
codec\_bytes=20, signal\_type=0})  
Mar 28 00:45:32.321: cc\_api\_caps\_ack (dstVdbPtr=0x61B9ADAC, dstCallId=0x34,  
srcCallId=0x35, caps={codec=0x4, fax\_rate=0x2, vad=0x2, modem=0x1  
codec\_bytes=20, signal\_type=0})  
Mar 28 00:45:32.325: cc\_api\_caps\_ack (dstVdbPtr=0x6174EC64, dstCallId=0x35,  
srcCallId=0x34, caps={codec=0x4, fax\_rate=0x2, vad=0x2, modem=0x1  
codec\_bytes=20, signal\_type=0})  
Mar 28 00:45:35.745: RASLib::ras\_sendto: msg length 76 from 172.16.120.2:49831  
to 172.16.120.1:1719  
Mar 28 00:45:35.745: RASLib::RASSendRRQ: RRQ (seq# 12166) sent to 172.16.120.1  
Mar 28 00:45:35.749: RASLib::RASRecvData: successfully rcvd message of  
length 52 from 172.16.120.1:1719  
Mar 28 00:45:35.749: RASLib::RASRecvData: RCF (seq# 12166) rcvd from  
[172.16.120.1:1719] on sock [0x6179E6A4]  
Mar 28 00:45:40.673: cc\_api\_call\_digit (vdbPtr=0x61B9ADAC, callID=0x34,  
digit=T, duration=0)  
Mar 28 00:45:40.673: placecall CallID 52 got event CC\_EV\_CALL\_DIGIT  
Mar 28 00:45:43.845: cc\_api\_call\_connected (vdbPtr=0x6174EC64, callID=0x35)  
Mar 28 00:45:43.845: placecall CallID 53 got event CC\_EV\_CALL\_CONNECTED

Mar 28 00:45:43.845: placecall CallID 52 returning PLACECALL\_ACTIVE.  
Mar 28 00:45:43.845: ccCallAppReturn (callID=0x34)  
Mar 28 00:45:43.845: pCall(0x61B00C24), settlement\_credit\_time=0  
Mar 28 00:45:43.845: ccCallSetContext (callID=0x35, context=0x61B00C24)  
Mar 28 00:45:43.845: cid(52) ta\_get\_event returning active  
Mar 28 00:45:43.845: :[callID]  
Mar 28 00:45:43.845: :/puts/  
Mar 28 00:45:43.845: cid( 52) running state active  
Mar 28 00:45:43.849: :/creditTimeLeft/  
Mar 28 00:45:43.849: :[waitEvent]  
Mar 28 00:45:43.849: Waiting Event for callID 52  
Mar 28 00:45:51.269: cc\_api\_call\_disconnected(vdbPtr=0x6174EC64, callID=0x35, cause=0x10)  
Mar 28 00:45:51.273: ccConferenceDestroy (confID=0x14, tag=0x0)  
Mar 28 00:45:51.273: cc\_api\_bridge\_drop\_done (confID=0x14, srcIF=0x6174EC64,  
srcCallID=0x35, dstCallID=0x34, disposition=0 tag=0x0)  
Mar 28 00:45:51.273: cc\_api\_bridge\_drop\_done (confID=0x14, srcIF=0x61B9ADAC,  
srcCallID=0x34,  
dstCallID=0x35, disposition=0 tag=0x0)  
Mar 28 00:45:51.273: ccCallDisconnect (callID=0x35, cause=0x10 tag=0x0)  
Mar 28 00:45:51.273: RASLib::ras\_sendto: msg length 76 from 172.16.120.2:49831  
to 172.16.120.1:1719  
Mar 28 00:45:51.273: RASLib::RASSendDRQ: DRQ (seq# 12167) sent to 172.16.120.1  
Mar 28 00:45:51.277: RASLib::RASRecvData: successfully rcvd message of length  
3 from 172.16.120.1:1719  
Mar 28 00:45:51.277: RASLib::RASRecvData: DCF (seq# 12167) rcvd from  
[172.16.120.1:1719] on sock [0x6179E6A4]  
Mar 28 00:45:51.277: stop\_h323\_ccapi\_accounting: Error: Null userp  
Mar 28 00:45:51.281: cc\_api\_call\_disconnect\_done(vdbPtr=0x6174EC64,  
callID=0x35, disp=0, tag=0x0)  
Mar 28 00:45:51.281: cid(53) outgoing disconnected  
Mar 28 00:45:51.281: cid(52) ta\_get\_event returning outgoing disconnected  
Mar 28 00:45:51.281: ta\_WaitEventCmd(): ta\_get\_event(event [outgoing disconnected])  
Mar 28 00:45:51.281: TCL script eval for callID 52 completed. code=OK  
Mar 28 00:45:51.281: ccCallDisconnect (callID=0x34, cause=0x10 tag=0x0)  
Mar 28 00:45:51.297: stop\_h323\_ccapi\_accounting: Error: Null userp  
Mar 28 00:45:51.297: cc\_api\_call\_disconnect\_done(vdbPtr=0x61B9ADAC,  
callID=0x34, disp=0, tag=0x0)  
Mar 28 00:45:51.305: %ISDN-6-DISCONNECT: Interface Serial0:18 disconnected  
from 9195552010 , call lasted 32 seconds  
Mar 28 00:45:51.305: ISDN Se0:23: TX -> DISCONNECT pd = 8 callref = 0x8002  
Mar 28 00:45:51.305: Cause i = 0x8090 - Normal call clearing  
Mar 28 00:45:51.353: ISDN Se0:23: RX <- RELEASE pd = 8 callref = 0x02  
Mar 28 00:45:51.353: ISDN Se0:23: TX -> RELEASE\_COMP pd = 8 callref = 0x8002  
Mar 28 00:45:51.365: %LINK-3-UPDOWN: Interface Serial0:18, changed state to down  
Mar 28 00:46:20.748: RASLib::ras\_sendto: msg length 76 from 172.16.120.2:49831  
to 172.16.120.1:1719  
Mar 28 00:46:20.748: RASLib::RASSendRRQ: RRQ (seq# 12168) sent to 172.16.120.1  
Mar 28 00:46:20.752: RASLib::RASRecvData: successfully rcvd message of  
length 52 from 172.16.120.1:1719  
Mar 28 00:46:20.752: RASLib::RASRecvData: RCF (seq# 12168) rcvd from  
[172.16.120.1:1719] on sock [0x6179E6A4]

Raleigh5300A#

Raleigh5300A#

Raleigh5300A#**show call active voice**

GENERIC:

SetupTime=54456184 ms

Index=1

PeerAddress=9195552010

PeerSubAddress=

PeerId=1

PeerIfIndex=56

LogicalIfIndex=26

ConnectTime=54456185  
CallDuration=00:00:44  
CallState=4  
CallOrigin=2  
ChargedUnits=0  
InfoType=2  
TransmitPackets=1475  
TransmitBytes=75244  
ReceivePackets=318  
ReceiveBytes=10176  
TELE:  
ConnectionId=[0x1ACB27D8 0x98F4006F 0x0 0x20755AB8]  
TxDuration=29800 ms  
VoiceTxDuration=6360 ms  
FaxTxDuration=0 ms  
CoderTypeRate=g729r8  
NoiseLevel=-55  
ACOMLevel=0  
OutSignalLevel=-42  
InSignalLevel=-56  
InfoActivity=2  
ERLLevel=15  
SessionTarget=  
ImgPages=0  
GENERIC:  
SetupTime=54457502 ms  
Index=1  
PeerAddress=4085556400  
PeerSubAddress=  
PeerId=2  
PeerIfIndex=57  
LogicalIfIndex=0  
ConnectTime=54458807  
CallDuration=00:00:18  
CallState=4  
CallOrigin=1  
ChargedUnits=0  
InfoType=2  
TransmitPackets=318  
TransmitBytes=6360  
ReceivePackets=1121  
ReceiveBytes=22420  
VOIP:  
ConnectionId[0x1ACB27D8 0x98F4006F 0x0 0x20755AB8]  
RemoteIPAddress=172.16.110.2  
RemoteUDPPort=17942  
RoundTripDelay=2 ms  
SelectedQoS=best-effort  
tx\_DtmfRelay=inband-voice  
SessionProtocol=cisco  
SessionTarget=ras  
OnTimeRvPayout=15900  
GapFillWithSilence=0 ms  
GapFillWithPrediction=0 ms  
GapFillWithInterpolation=0 ms  
GapFillWithRedundancy=0 ms  
HiWaterPayoutDelay=70 ms  
LoWaterPayoutDelay=50 ms  
ReceiveDelay=50 ms  
LostPackets=0  
EarlyPackets=0  
LatePackets=0  
VAD = enabled  
CoderTypeRate=g729r8

CodecBytes=20  
SignalingType=cas  
Raleigh5300A#

Raleigh5300A#**show call active voice brief**

<ID>: <start>hs.<index> +<connect> pid:<peer\_id> <dir> <addr> <state>  
dur hh:mm:ss tx:<packets>/<bytes> rx:<packets>/<bytes> <state>  
IP <ip>:<udp> rtt:<time>ms pl:<play>/<gap>ms lost:<lost>/<early>/<late>  
delay:<last>/<min>/<max>ms <codec>  
FR <protocol><y/n><y/n><y/n><on/off> [int dlci cid] vad: dtmf: seq:  
sig: <codec> (payload size)  
Tele <int>: tx:<tot>/<v>/<fax>ms <codec> noise:<l> acom:<l> i/o:<l>/<l> dBm

6F : 54456184hs.1 +1 pid:1 Answer 9195552010 active  
dur 00:00:40 tx:1279/73076 rx:172/5504  
Tele 0:D:54: tx:25890/3440/0ms g729r8 noise:-55 acom:0 i/0:-55/-41 dBm

6F : 54457502hs.1 +1305 pid:2 Originate 4085556400 active  
dur 00:00:14 tx:172/3440 rx:925/18500  
IP 172.16.110.2:17942 rtt:2ms pl:15900/0ms lost:0/0/0 delay:50/50/70ms g729r8

## Uscita SanJose 5300A

SanJose5300A#**show gateway**

Gateway SJ5300A@cisco.com is registered to Gatekeeper SJgk1

Alias list (CLI configured)

H323-ID SJ5300A@cisco.com

Alias list (last RCF)

H323-ID SJ5300A@cisco.com

H323 resource thresholding is Disabled

SanJose5300A#**show log**

Syslog logging: enabled (0 messages dropped, 0 flushes, 0 overruns)

Console logging: level debugging, 1787 messages logged

Monitor logging: level debugging, 0 messages logged

Buffer logging: level debugging, 1787 messages logged

Trap logging: level informational, 97 message lines logged

Log Buffer (50000 bytes):

Mar 28 00:45:25.585: RASLib::ras\_sendto: msg length 74 from  
172.16.110.2:52521 to 172.16.110.1:1719  
Mar 28 00:45:25.585: RASLib::RASSendRRQ: RRQ (seq# 12137) sent to 172.16.110.1  
Mar 28 00:45:25.589: RASLib::RASRecvData: successfully rcvd message of  
length 52 from 172.16.110.1:1719  
Mar 28 00:45:25.589: RASLib::RASRecvData: RCF (seq# 12137) rcvd from  
[172.16.110.1:1719] on sock [0x61752218]  
Mar 28 00:45:30.705: RASLib::ras\_sendto: msg length 122 from  
172.16.110.2:52521 to 172.16.110.1:1719  
Mar 28 00:45:30.705: RASLib::RASSendARQ: ARQ (seq# 12138) sent to 172.16.110.1  
Mar 28 00:45:30.709: RASLib::RASRecvData: successfully rcvd message  
of length 24 from 172.16.110.1:1719  
Mar 28 00:45:30.713: RASLib::RASRecvData: ACF (seq# 12138) rcvd from  
[172.16.110.1:1719] on sock [0x61752218]  
Mar 28 00:45:30.713: cc\_api\_call\_setup\_ind (vdbPtr=0x616F8D2C,

```
                callInfo={called=408#4085556400,
                calling=9195552010, fdest=1 peer_tag=2}, callID=0x6199B54C)
Mar 28 00:45:30.713: cc_process_call_setup_ind (event=0x619B2D6C) handed
                call to app "SESSION"
Mar 28 00:45:30.713: sess_appl: ev(23=CC_EV_CALL_SETUP_IND), cid(39), disp(0)
Mar 28 00:45:30.713: ccCallSetContext (callID=0x27, context=0x61A60F64)
Mar 28 00:45:30.713: ssaCallSetupInd finalDest cllng(9195552010),
                cllcd(408#4085556400)
Mar 28 00:45:30.713: ssaSetupPeer cid(39) peer list: tag(1) called
                number (408#4085556400)
Mar 28 00:45:30.713: ssaSetupPeer cid(39), destPat(408#4085556400),
                matched(11), prefix(6), peer(61A03B88)
Mar 28 00:45:30.713: ccCallProceeding (callID=0x27, prog_ind=0x0)
Mar 28 00:45:30.713: ccCallSetupRequest (Inbound call = 0x27, outbound peer =1, dest=,
                params=0x61A60F78 mode=0, *callID=0x619BB9F0)
Mar 28 00:45:30.713: callingNumber=9195552010, calledNumber=408#4085556400,
                redirectNumber=
Mar 28 00:45:30.713: accountNumber=, finalDestFlag=1,
                guid=1acb.27d8.98f4.006b.0000.0000.2071.a5e8
Mar 28 00:45:30.713: peer_tag=1
Mar 28 00:45:30.713: ccIFCallSetupRequest: (vdbPtr=0x619AC884, dest=,
                callParams={called=408#4085556400,
                calling=9195552010, fdest=1, voice_peer_tag=1}, mode=0x0)
Mar 28 00:45:30.717: ccCallSetContext (callID=0x28, context=0x6194F3AC)
Mar 28 00:45:30.717: cc_api_call_proceeding(vdbPtr=0x619AC884, callID=0x28,
                prog_ind=0x0)
Mar 28 00:45:30.717: sess_appl: ev(20=CC_EV_CALL_PROCEEDING), cid(40), disp(0)
Mar 28 00:45:30.717: ssaTraceSct: cid(40)st(1)oldst(0)cfid(-1)csz(0)
                in(0)fDest(0)-cid2(39)st2(1)oldst2(0)
Mar 28 00:45:30.717: ssaIgnore cid(40), st(1),oldst(1), ev(20)
Mar 28 00:45:31.701: cc_api_call_alert(vdbPtr=0x619AC884, callID=0x28,
                prog_ind=0x8, sig_ind=0x1)
Mar 28 00:45:31.701: sess_appl: ev(7=CC_EV_CALL_ALERT), cid(40), disp(0)
Mar 28 00:45:31.701: ssaTraceSct: cid(40)st(1)oldst(1)cfid(-1)csz(0)
                in(0)fDest(0)-cid2(39)st2(1)oldst2(0)
Mar 28 00:45:31.701: ccCallAlert (callID=0x27, prog_ind=0x8, sig_ind=0x1)
Mar 28 00:45:31.701: ccConferenceCreate (confID=0x619BBA38, callID1=0x27,
                callID2=0x28, tag=0x0)
Mar 28 00:45:31.701: cc_api_bridge_done (confID=0x14, srcIF=0x616F8D2C, srcCallID=0x27,
                dstCallID=0x28, disposition=0, tag=0x0)
Mar 28 00:45:31.705: cc_api_bridge_done (confID=0x14, srcIF=0x619AC884, srcCallID=0x28,
                dstCallID=0x27, disposition=0, tag=0x0)
Mar 28 00:45:31.705: cc_api_caps_ind (dstVdbPtr=0x616F8D2C, dstCallId=0x27,
                srcCallId=0x28,caps={codec=0xEBF7, fax_rate=0xFF,
                vad=0x3, modem=0x3 codec_bytes=1637472312, signal_type=2})
Mar 28 00:45:31.705: sess_appl: ev(28=CC_EV_CONF_CREATE_DONE), cid(39), disp(0)
Mar 28 00:45:31.705: ssaTraceSct: cid(39)st(3)oldst(0)cfid(20)csz(0)
                in(1)fDest(1)-cid2(40)st2(3)oldst2(1)
Mar 28 00:45:32.517: cc_api_caps_ind (dstVdbPtr=0x619AC884, dstCallId=0x28,
                srcCallId=0x27,caps={codec=0x4, fax_rate=0x2, vad=0x2, modem=0x1
                codec_bytes=20, signal_type=0})
Mar 28 00:45:32.517: cc_api_caps_ack (dstVdbPtr=0x619AC884, dstCallId=0x28,
                srcCallId=0x27, caps={codec=0x4, fax_rate=0x2, vad=0x2, modem=0x1
                codec_bytes=20, signal_type=0})
Mar 28 00:45:32.521: cc_api_caps_ack (dstVdbPtr=0x616F8D2C, dstCallId=0x27,
                srcCallId=0x28,caps={codec=0x4, fax_rate=0x2, vad=0x2, modem=0x1
                codec_bytes=20, signal_type=0})
Mar 28 00:45:43.834: cc_api_call_connected(vdbPtr=0x619AC884, callID=0x28)
Mar 28 00:45:43.834: sess_appl: ev(8=CC_EV_CALL_CONNECTED), cid(40), disp(0)
Mar 28 00:45:43.834: ssaTraceSct: cid(40)st(4)oldst(1)cfid(20)csz(0)
                in(0)fDest(0)-cid2(39)st2(4)oldst2(3)
Mar 28 00:45:43.834: ccCallConnect (callID=0x27)
Mar 28 00:45:43.834: ssaFlushPeerTagQueue cid(39) peer list: (empty)
Mar 28 00:45:51.258: cc_api_call_disconnected(vdbPtr=0x619AC884,
```

callID=0x28, cause=0x10)

Mar 28 00:45:51.258: sess\_appl: ev(12=CC\_EV\_CALL\_DISCONNECTED), cid(40), disp(0)

Mar 28 00:45:51.258: ssaTraceSct: cid(40)st(5)oldst(4)cfid(20)csz(0)  
in(0)fDest(0)-cid2(39)st2(5)oldst2(3)

Mar 28 00:45:51.258: ssa: Disconnected cid(40) state(5) cause(0x10)

Mar 28 00:45:51.258: ccConferenceDestroy (confID=0x14, tag=0x0)

Mar 28 00:45:51.258: cc\_api\_bridge\_drop\_done (confID=0x14, srcIF=0x616F8D2C,  
srcCallID=0x27, dstCallID=0x28, disposition=0 tag=0x0)

Mar 28 00:45:51.258: cc\_api\_bridge\_drop\_done (confID=0x14, srcIF=0x619AC884,  
srcCallID=0x28, dstCallID=0x27, disposition=0 tag=0x0)

Mar 28 00:45:51.258: sess\_appl: ev(29=CC\_EV\_CONF\_DESTROY\_DONE), cid(39), disp(0)

Mar 28 00:45:51.258: ssaTraceSct: cid(39)st(6)oldst(3)cfid(20)csz(0)  
in(1)fDest(1)-cid2(40)st2(6)oldst2(5)

Mar 28 00:45:51.258: ccCallDisconnect (callID=0x27, cause=0x10 tag=0x0)

Mar 28 00:45:51.258: ccCallDisconnect (callID=0x28, cause=0x10 tag=0x0)

Mar 28 00:45:51.262: RASLib::ras\_sendto: msg length 76 from 172.16.110.2:52521  
to 172.16.110.1:1719

Mar 28 00:45:51.262: RASLib::RASSendDRQ: DRQ (seq# 12139) sent to 172.16.110.1

Mar 28 00:45:51.266: RASLib::RASRecvData: successfully rcvd message of  
length 3 from 172.16.110.1:1719

Mar 28 00:45:51.266: RASLib::RASRecvData: DCF (seq# 12139) rcvd from  
[172.16.110.1:1719] on sock [0x61752218]

Mar 28 00:45:51.266: cc\_api\_call\_disconnect\_done(vdbPtr=0x0,  
callID=0x27, disp=0, tag=0x0)

Mar 28 00:45:51.270: sess\_appl: ev(13=CC\_EV\_CALL\_DISCONNECT\_DONE), cid(39), disp(0)

Mar 28 00:45:51.270: ssaTraceSct: cid(39)st(7)oldst(6)cfid(-1)csz(0)  
in(1)fDest(1)-cid2(40)st2(7)oldst2(5)

Mar 28 00:45:51.278: cc\_api\_call\_disconnect\_done(vdbPtr=0x619AC884,  
callID=0x28, disp=0, tag=0x61726DDC)

Mar 28 00:45:51.278: sess\_appl: ev(13=CC\_EV\_CALL\_DISCONNECT\_DONE), cid(40), disp(0)

Mar 28 00:45:51.278: ssaTraceSct: cid(40)st(7)oldst(5)cfid(-1)csz(1)in(0)fDest(0)

Mar 28 00:46:10.590: RASLib::ras\_sendto: msg length 74 from 172.16.110.2:52521  
to 172.16.110.1:1719

Mar 28 00:46:10.590: RASLib::RASSendRRQ: RRQ (seq# 12140) sent to 172.16.110.1

Mar 28 00:46:10.594: RASLib::RASRecvData: successfully rcvd message of  
length 52 from 172.16.110.1:1719

Mar 28 00:46:10.594: RASLib::RASRecvData: RCF (seq# 12140) rcvd from  
[172.16.110.1:1719] on sock [0x61752218]

Mar 28 00:46:55.595: RASLib::ras\_sendto: msg length 74 from  
172.16.110.2:52521 to 172.16.110.1:1719

Mar 28 00:46:55.595: RASLib::RASSendRRQ: RRQ (seq# 12141) sent to 172.16.110.1

Mar 28 00:46:55.599: RASLib::RASRecvData: successfully rcvd  
message of length 52 from 172.16.110.1:1719

Mar 28 00:46:55.599: RASLib::RASRecvData: RCF (seq# 12141) rcvd  
from [172.16.110.1:1719] on sock [0x61752218]

Mar 28 00:47:40.600: RASLib::ras\_sendto: msg length 74 from  
172.16.110.2:52521 to 172.16.110.1:1719

Mar 28 00:47:40.600: RASLib::RASSendRRQ: RRQ (seq# 12142) sent to 172.16.110.1

Mar 28 00:47:40.604: RASLib::RASRecvData: successfully rcvd  
message of length 52 from 172.16.110.1:1719

Mar 28 00:47:40.604: RASLib::RASRecvData: RCF (seq# 12142) rcvd  
from [172.16.110.1:1719] on sock [0x61752218]

Mar 28 00:48:25.604: RASLib::ras\_sendto: msg length 74 from 172.16.110.2:52521  
to 172.16.110.1:1719

Mar 28 00:48:25.604: RASLib::RASSendRRQ: RRQ (seq# 12143) sent to 172.16.110.1

Mar 28 00:48:25.608: RASLib::RASRecvData: successfully rcvd message  
of length 52 from 172.16.110.1:1719

Mar 28 00:48:25.608: RASLib::RASRecvData: RCF (seq# 12143) rcvd from  
[172.16.110.1:1719] on sock [0x61752218]

SanJose5300A#

SanJose5300A#

SanJose5300A#

SanJose5300A#**show call active voice brief**

<ID>: <start>hs.<index> +<connect> pid:<peer\_id> <dir> <addr> <state>  
dur hh:mm:ss tx:<packets>/<bytes> rx:<packets>/<bytes> <state>  
IP <ip>:<udp> rtt:<time>ms pl:<play>/<gap>ms lost:<lost>/<early>/<late>  
delay:<last>/<min>/<max>ms <codec>  
FR <protocol><y/n><y/n><y/n><on/off> [int dlci cid] vad: dtmf: seq:  
sig: <codec> (payload size)  
Tele <int>: tx:<tot>/<v>/<fax>ms <codec> noise:<l> acom:<l> i/o:<l>/<l> dBm

6F : 54422877hs.1 +1301 pid:2 Answer 9195552010 active  
dur 00:00:38 tx:2122/42440 rx:836/16720  
IP 172.16.120.2:16938 rtt:2ms pl:16720/0ms lost:0/0/0 delay:30/30/70ms g729r8

6F : 54422895hs.1 +1283 pid:1 Originate 408#4085556400 active  
dur 00:00:38 tx:836/-8996 rx:2143/68576  
Tele 0:1 (42): tx:50050/42860/0ms g729r8 noise:-66 acom:0 i/o:-40/-71 dBm

SanJose5300A#**show call active voice**

GENERIC:  
SetupTime=54422877 ms  
Index=1  
PeerAddress=9195552010  
PeerSubAddress=  
PeerId=2  
PeerIfIndex=17  
LogicalIfIndex=0  
ConnectTime=54424178  
CallDuration=00:00:44  
CallState=4  
CallOrigin=2  
ChargedUnits=0  
InfoType=2  
TransmitPackets=2414  
TransmitBytes=48280  
ReceivePackets=836  
ReceiveBytes=16720  
VOIP:  
ConnectionId[0x1ACB27D8 0x98F4006F 0x0 0x20755AB8]  
RemoteIPAddress=172.16.120.2  
RemoteUDPPort=16938  
RoundTripDelay=2 ms  
SelectedQoS=best-effort  
tx\_DtmfRelay=inband-voice  
SessionProtocol=cisco  
SessionTarget=  
OnTimeRvPlayout=16720  
GapFillWithSilence=0 ms  
GapFillWithPrediction=0 ms  
GapFillWithInterpolation=0 ms  
GapFillWithRedundancy=0 ms  
HiWaterPlayoutDelay=70 ms  
LoWaterPlayoutDelay=30 ms  
ReceiveDelay=30 ms  
LostPackets=0  
EarlyPackets=0  
LatePackets=0  
VAD = enabled  
CoderTypeRate=g729r8  
CodecBytes=20  
SignalingType=cas  
GENERIC:



SetupTime=54422895 ms  
Index=1  
PeerAddress=408#4085556400  
PeerSubAddress=  
PeerId=1  
PeerIfIndex=16  
LogicalIfIndex=13  
ConnectTime=54424178  
CallDuration=00:00:44  
CallState=4  
CallOrigin=1  
ChargedUnits=0  
InfoType=2  
TransmitPackets=836  
TransmitBytes=-12488  
ReceivePackets=2434  
ReceiveBytes=77888  
TELE:  
ConnectionId=[0x1ACB27D8 0x98F4006F 0x0 0x20755AB8]  
TxDuration=55880 ms  
VoiceTxDuration=48690 ms  
FaxTxDuration=0 ms  
CoderTypeRate=g729r8  
NoiseLevel=-66  
ACOMLevel=0  
OutSignalLevel=-70  
InSignalLevel=-42  
InfoActivity=2  
ERLLevel=15  
SessionTarget=  
ImgPages=0  
SanJose5300A#

## Uscita Raleigh3600A

Raleigh3640A#**show debug**

H.323 RAS:

H.323 RAS Messages debugging is on

Raleigh3640A#und all

Raleigh3640A#**show gatekeeper endpoint**

GATEKEEPER ENDPOINT REGISTRATION

=====

| CallSignalAddr | Port | RASSignalAddr | Port  | Zone Name | Type    | F |
|----------------|------|---------------|-------|-----------|---------|---|
| 172.16.120.2   | 1720 | 172.16.120.2  | 49831 | RALgk1    | VOIP-GW |   |

H323-ID: RAL5300A@cisco.com

Total number of active registrations = 1

Raleigh3640A#**show gatekeeper gw-type-prefix**

GATEWAY TYPE PREFIX TABLE

=====

Prefix: 408#\*

Prefix: 919#\*

Zone RALgk1 master gateway list:

172.16.120.2:1720 RAL5300A

Raleigh3640A#**show log**

Syslog logging: enabled (0 messages dropped, 0 flushes, 0 overruns)

Console logging: level debugging, 277 messages logged

Monitor logging: level debugging, 0 messages logged  
Buffer logging: level debugging, 277 messages logged  
Trap logging: level informational, 107 message lines logged

Log Buffer (50000 bytes):

```
Mar 28 00:44:50.742: RASLib::RASRecvData: successfully rcvd
message of length 76 from 172.16.120.2:49831
Mar 28 00:44:50.742: RASLib::RASRecvData: RRQ (seq# 12164)
rcvd from [172.16.120.2:49831] on sock [0x60F2F9A0]
Mar 28 00:44:50.746: RASLib::ras_sendto: msg length 52
from 172.16.120.1:1719 to 172.16.120.2:49831
Mar 28 00:44:50.746: RASLib::RASSendRCF: RCF (seq# 12164)
sent to 172.16.120.2
Mar 28 00:45:30.682: RASLib::RASRecvData: successfully
rcvd message of length 115 from 172.16.120.2:49831
Mar 28 00:45:30.686: RASLib::RASRecvData: ARQ (seq# 12165)
rcvd from [172.16.120.2:49831] on sock [0x60F2F9A0]
RASLib::parse_arq_nonstd: ARQ Nonstd
decode succeeded, remlen = 0
Mar 28 00:45:30.686: RASLib::ras_sendto: msg length 7 from
172.16.120.1:1719 to 172.16.120.2:49831
Mar 28 00:45:30.686: RASLib::RASSendRIP: RIP (seq# 12165) sent to 172.16.120.2
Mar 28 00:45:30.686: RASLib::RAS_WK_TInit: ipsock [0x60F0ED1C] setup successful
Mar 28 00:45:30.690: RASLib::ras_sendto: msg length 79
from 172.16.120.1:55415 to 172.16.110.1:1719
Mar 28 00:45:30.690: RASLib::RASSendLRQ: LRQ (seq# 28) sent to 172.16.110.1
Mar 28 00:45:30.698: RASLib::RASRecvData: successfully
rcvd message of length 128 from 172.16.110.1:1719
Mar 28 00:45:30.698: RASLib::RASRecvData: LCF (seq# 28)
rcvd from [172.16.110.1:1719] on sock [0x60F0ED1C]
RASLib::parse_lcf_nonstd: LCF Nonstd
decode succeeded, remlen = 0
Mar 28 00:45:30.702: RASLib::ras_sendto: msg length 24 from
172.16.120.1:1719 to 172.16.120.2:49831
Mar 28 00:45:30.702: RASLib::RASSendACF: ACF (seq# 12165) sent to 172.16.120.2
Mar 28 00:45:35.746: RASLib::RASRecvData: successfully rcvd message of
length 76 from 172.16.120.2:49831
Mar 28 00:45:35.746: RASLib::RASRecvData: RRQ (seq# 12166) rcvd
from [172.16.120.2:49831] on sock [0x60F2F9A0]
Mar 28 00:45:35.750: RASLib::ras_sendto: msg length 52 from
172.16.120.1:1719 to 172.16.120.2:49831
Mar 28 00:45:35.750: RASLib::RASSendRCF: RCF (seq# 12166) sent to 172.16.120.2
Mar 28 00:45:51.274: RASLib::RASRecvData: successfully rcvd
message of length 76 from 172.16.120.2:49831
Mar 28 00:45:51.274: RASLib::RASRecvData: DRQ (seq# 12167)
rcvd from [172.16.120.2:49831] on sock [0x60F2F9A0]
Mar 28 00:45:51.274: RASLib::ras_sendto: msg length 3
from 172.16.120.1:1719 to 172.16.120.2:49831
Mar 28 00:45:51.278: RASLib::RASSendDCF: DCF (seq# 12167)
sent to 172.16.120.2
Mar 28 00:46:20.750: RASLib::RASRecvData: successfully
rcvd message of length 76 from 172.16.120.2:49831
Mar 28 00:46:20.750: RASLib::RASRecvData: RRQ (seq# 12168)
rcvd from [172.16.120.2:49831] on sock [0x60F2F9A0]
Mar 28 00:46:20.750: RASLib::ras_sendto: msg length 52 from
172.16.120.1:1719 to 172.16.120.2:49831
Mar 28 00:46:20.754: RASLib::RASSendRCF: RCF (seq# 12168)
sent to 172.16.120.2
Mar 28 00:47:05.750: RASLib::RASRecvData: successfully
rcvd message of length 76 from 172.16.120.2:49831
Mar 28 00:47:05.754: RASLib::RASRecvData: RRQ (seq# 12169)
```

```

rcvd from [172.16.120.2:49831] on sock [0x60F2F9A0]
Mar 28 00:47:05.754: RASLib::ras_sendto: msg length 52
                        from 172.16.120.1:1719 to 172.16.120.2:49831
Mar 28 00:47:05.758: RASLib::RASSendRCF: RCF (seq# 12169)
                        sent to 172.16.120.2
Mar 28 00:47:50.754: RASLib::RASRecvData: successfully
                        rcvd message of length 76 from 172.16.120.2:49831
Mar 28 00:47:50.758: RASLib::RASRecvData: RRQ (seq# 12170)
                        rcvd from [172.16.120.2:49831] on sock [0x60F2F9A0]
Mar 28 00:47:50.758: RASLib::ras_sendto: msg length 52
                        from 172.16.120.1:1719 to 172.16.120.2:49831
Mar 28 00:47:50.758: RASLib::RASSendRCF: RCF (seq# 12170) sent to 172.16.120.2
Raleigh3640A#

```

Raleigh3640A#

Raleigh3640A#**show gatekeeper call**

Total number of active calls = 1.

GATEKEEPER CALL INFO

=====

| LocalCallID      | Age(secs)     | BW             |      |               |       |
|------------------|---------------|----------------|------|---------------|-------|
| 24-6872          | 45            | 64 (Kbps)      |      |               |       |
| Endpt(s): Alias  | E.164Addr     | CallSignalAddr | Port | RASSignalAddr | Port  |
| src EP: RAL5300A | 9195552010    | 172.16.120.2   | 1720 | 172.16.120.2  | 49831 |
| dst EP:          | 408#408555640 | 172.16.110.2   | 1720 | 172.16.110.2  | 1720  |

Raleigh3640A#

## [Uscita SanJose 3640A](#)

SanJose3640A#**show debug**

H.323 RAS:

H.323 RAS Messages debugging is on

SanJose3640A#**show gatekeeper endpoint**

GATEKEEPER ENDPOINT REGISTRATION

=====

| CallSignalAddr | Port | RASSignalAddr | Port  | Zone Name | Type    | F |
|----------------|------|---------------|-------|-----------|---------|---|
| 172.16.110.2   | 1720 | 172.16.110.2  | 52521 | SJgk1     | VOIP-GW |   |

H323-ID: SJ5300A@cisco.com

Total number of active registrations = 1

SanJose3640A#**show gatekeeper gw-type-prefix**

GATEWAY TYPE PREFIX TABLE

=====

Prefix: 919#\*

Prefix: 408#\*

Zone SJgk1 master gateway list:

172.16.110.2:1720 SJ5300A

SanJose3640A#**show log**

Syslog logging: enabled (0 messages dropped, 0 flushes, 0 overruns)

Console logging: level debugging, 1301 messages logged

Monitor logging: level debugging, 0 messages logged

Buffer logging: level debugging, 1293 messages logged

Trap logging: level informational, 103 message lines logged

Log Buffer (50000 bytes):

Mar 28 00:45:25.592: RASLib::RASRecvData: successfully rcvd  
message of length 74 from 172.16.110.2:52521  
Mar 28 00:45:25.592: RASLib::RASRecvData: RRQ (seq# 12137) rcvd  
from [172.16.110.2:52521] on sock [0x60FE9B04]  
Mar 28 00:45:25.596: RASLib::ras\_sendto: msg length 52 from  
172.16.110.1:1719 to 172.16.110.2:52521  
Mar 28 00:45:25.596: RASLib::RASSendRCF: RCF (seq# 12137) sent to 172.16.110.2  
Mar 28 00:45:30.692: RASLib::RASRecvData: successfully rcvd message  
of length 79 from 172.16.120.1:55415  
Mar 28 00:45:30.692: RASLib::RASRecvData: LRQ (seq# 28) rcvd from  
[172.16.120.1:55415] on sock [0x60FE9B04]  
RASLib::parse\_lrq\_nonstd: LRQ Nonstd decode succeeded, remlen = 0  
Mar 28 00:45:30.696: RASLib::ras\_sendto: msg length 128 from  
172.16.110.1:1719 to 172.16.120.1:55415  
Mar 28 00:45:30.696: RASLib::RASSendLCF: LCF (seq# 28) sent to 172.16.120.1  
Mar 28 00:45:30.712: RASLib::RASRecvData: successfully rcvd message  
of length 122 from 172.16.110.2:52521  
Mar 28 00:45:30.712: RASLib::RASRecvData: ARQ (seq# 12138) rcvd from  
[172.16.110.2:52521] on sock [0x60FE9B04]  
RASLib::parse\_arq\_nonstd: ARQ Nonstd decode succeeded, remlen = 0  
Mar 28 00:45:30.716: RASLib::ras\_sendto: msg length 24 from 172.16.110.1:1719  
to 172.16.110.2:52521  
Mar 28 00:45:30.716: RASLib::RASSendACF: ACF (seq# 12138) sent to 172.16.110.2  
Mar 28 00:45:51.268: RASLib::RASRecvData: successfully rcvd message  
of length 76 from 172.16.110.2:52521  
Mar 28 00:45:51.268: RASLib::RASRecvData: DRQ (seq# 12139) rcvd  
from [172.16.110.2:52521] on sock [0x60FE9B04]  
Mar 28 00:45:51.268: RASLib::ras\_sendto: msg length 3 from  
172.16.110.1:1719 to 172.16.110.2:52521  
Mar 28 00:45:51.268: RASLib::RASSendDCF: DCF (seq# 12139) sent to 172.16.110.2  
Mar 28 00:46:10.596: RASLib::RASRecvData: successfully rcvd message of  
length 74 from 172.16.110.2:52521  
Mar 28 00:46:10.596: RASLib::RASRecvData: RRQ (seq# 12140) rcvd  
from [172.16.110.2:52521] on sock [0x60FE9B04]  
Mar 28 00:46:10.600: RASLib::ras\_sendto: msg length 52 from 172.16.110.1:1719  
to 172.16.110.2:52521  
Mar 28 00:46:10.600: RASLib::RASSendRCF: RCF (seq# 12140) sent to 172.16.110.2  
Mar 28 00:46:55.600: RASLib::RASRecvData: successfully rcvd message of  
length 74 from 172.16.110.2:52521  
Mar 28 00:46:55.600: RASLib::RASRecvData: RRQ (seq# 12141) rcvd from  
[172.16.110.2:52521] on sock [0x60FE9B04]  
Mar 28 00:46:55.604: RASLib::ras\_sendto: msg length 52 from 172.16.110.1:1719  
to 172.16.110.2:52521  
Mar 28 00:46:55.604: RASLib::RASSendRCF: RCF (seq# 12141) sent to 172.16.110.2  
Mar 28 00:47:40.604: RASLib::RASRecvData: successfully rcvd message of  
length 74 from 172.16.110.2:52521  
Mar 28 00:47:40.608: RASLib::RASRecvData: RRQ (seq# 12142) rcvd from  
[172.16.110.2:52521] on sock [0x60FE9B04]  
Mar 28 00:47:40.608: RASLib::ras\_sendto: msg length 52 from 172.16.110.1:1719  
to 172.16.110.2:52521  
Mar 28 00:47:40.608: RASLib::RASSendRCF: RCF (seq# 12142) sent to 172.16.110.2  
Mar 28 00:48:25.608: RASLib::RASRecvData: successfully rcvd message of  
length 74 from 172.16.110.2:52521  
Mar 28 00:48:25.612: RASLib::RASRecvData: RRQ (seq# 12143) rcvd from  
[172.16.110.2:52521] on sock [0x60FE9B04]  
Mar 28 00:48:25.612: RASLib::ras\_sendto: msg length 52 from 172.16.110.1:1719  
to 172.16.110.2:52521  
Mar 28 00:48:25.612: RASLib::RASSendRCF: RCF (seq# 12143) sent to 172.16.110.2  
SanJose3640A#

SanJose3640A#

SanJose3640A#**show gatekeeper calls**

Total number of active calls = 1.

GATEKEEPER CALL INFO

=====

| LocalCallID     | Age (secs)    | BW             |      |               |       |  |
|-----------------|---------------|----------------|------|---------------|-------|--|
| 21-6872         | 63            | 64 (Kbps)      |      |               |       |  |
| Endpt(s): Alias | E.164Addr     | CallSignalAddr | Port | RASSignalAddr | Port  |  |
| src EP:         | 9195552010    |                |      |               |       |  |
| dst EP: SJ5300A | 408#408555640 | 172.16.110.2   | 1720 | 172.16.110.2  | 52521 |  |

## [Risoluzione dei problemi](#)

Le informazioni contenute in questa sezione permettono di risolvere i problemi relativi alla configurazione.

### [Comandi per la risoluzione dei problemi](#)

Lo [strumento Output Interpreter](#) (solo utenti [registrati](#)) (OIT) supporta alcuni comandi **show**. Usare l'OIT per visualizzare un'analisi dell'output del comando **show**.

**Nota:** consultare le [informazioni importanti sui comandi di debug](#) prima di usare i comandi di **debug**.

- [debug voip aaa](#): abilita l'output dei messaggi di debug per il gateway aaa sulla console di sistema.
- [debug isdn q931](#): visualizza le informazioni sulla configurazione delle chiamate e sul ripristino delle connessioni di rete ISDN (livello 3) tra il router locale (lato utente) e la rete.
- [debug voip capi inout](#): esegue il debug dell'API di controllo delle chiamate.
- [debug voip ivr](#): esegue il debug dell'applicazione IVR.
- [debug ras](#): visualizza i tipi e gli indirizzi dei messaggi RAS (Registration, Admission and Status Protocol) inviati e ricevuti.

## [Informazioni correlate](#)

- [Guida per programmatori TCL IVR API versione 1.0](#)
- [Configurazione di Interactive Voice Response per le piattaforme Cisco Access](#)
- [Miglioramenti sicurezza e accounting gateway Cisco H.323](#)
- [Supporto alla tecnologia vocale](#)
- [Supporto ai prodotti voce e Unified Communications](#)
- [Risoluzione dei problemi di Cisco IP Telephony](#)
- [Documentazione e supporto tecnico – Cisco Systems](#)