

Connessione di QuickVPN con WRV210 su Windows 7

Obiettivo

QuickVPN è un modo semplice per configurare il software VPN su un computer remoto o su un notebook con un nome utente e una password semplici. Ciò consente di accedere in modo sicuro alle reti in base al dispositivo utilizzato. Questo articolo spiega come collegare correttamente QuickVPN su Windows 7 con un router WRV210 Wireless-G VPN.

Nota: Verificare che il software QuickVPN sia installato in Windows.

Dispositivi interessati

WRV210

Configurazione QuickVPN








Passaggio 1. In Windows 7 scegliere **Start > Pannello di controllo > Sistema e sicurezza > Firewall**. Viene visualizzata la pagina *Firewall*:

Help protect your computer with Windows Firewall

Windows Firewall can help prevent hackers or malicious software from gaining access to your computer through the Internet or a network.

[How does a firewall help protect my computer?](#)

[What are network locations?](#)

 	Home or work (private) networks	Not Connected 
 	Public networks	Connected 
Networks in public places such as airports or coffee shops		
Windows Firewall state:	On	
Incoming connections:	Block all connections to programs that are not on the list of allowed programs	
Active public networks:	 wushock	
Notification state:	Notify me when Windows Firewall blocks a new program	

Control Panel Home

- Allow a program or feature through Windows Firewall
- Change notification settings
- Turn Windows Firewall on or off**
- Restore defaults
- Advanced settings
- Troubleshoot my network

Help protect your computer with Windows Firewall

Windows Firewall can help prevent hackers or malicious software from gaining access to your computer through the Internet or a network.

[How does a firewall help protect my computer?](#)

[What are network locations?](#)

Update your Firewall settings

Windows Firewall is not using the recommended settings to protect your computer. [Use recommended settings](#)

[What are the recommended settings?](#)

	Home or work (private) networks	Not Connected
	Public networks	Connected

Networks in public places such as airports or coffee shops

Windows Firewall state:	Off
Incoming connections:	Block all connections to programs that are not on the list of allowed programs
Active public networks:	wushock
Notification state:	Notify me when Windows Firewall blocks a new program

Passaggio 2. Se Windows Firewall è disattivato, fare clic su **Attiva o disattiva Windows Firewall** e viene visualizzata la pagina *Personalizzazione firewall*:

Customize settings for each type of network

You can modify the firewall settings for each type of network location that you use.

[What are network locations?](#)

Home or work (private) network location settings

- Turn on Windows Firewall**
 - Block all incoming connections, including those in the list of allowed programs
 - Notify me when Windows Firewall blocks a new program
- Turn off Windows Firewall (not recommended)

Public network location settings

- Turn on Windows Firewall**
 - Block all incoming connections, including those in the list of allowed programs
 - Notify me when Windows Firewall blocks a new program
- Turn off Windows Firewall (not recommended)

Passaggio 3. Fare clic su **Attiva Windows Firewall** nell'area delle impostazioni di rete e fare clic su **OK**.

Help protect your computer with Windows Firewall

Windows Firewall can help prevent hackers or malicious software from gaining access to your computer through the Internet or a network.

[How does a firewall help protect my computer?](#)

[What are network locations?](#)

	Home or work (private) networks	Not Connected
	Public networks	Connected
Networks in public places such as airports or coffee shops		
Windows Firewall state:	On	
Incoming connections:	Block all connections to programs that are not on the list of allowed programs	
Active public networks:	wushock	
Notification state:	Notify me when Windows Firewall blocks a new program	

Nota: Il campo di stato di Windows Firewall nella pagina *Firewall* verrà visualizzato su Attivato.

Passaggio 4. In Windows 7 scegliere **Start > Pannello di controllo > Sistema e sicurezza > Windows Update**. Verrà visualizzata la pagina *Windows Update*:

Windows Update

	No important updates available
1 optional update is available	No updates are currently selected.

Most recent check for updates: Today at 10:52 AM

Updates were installed: Today at 3:00 AM. [View update history](#)

You receive updates: For Windows and other products from Microsoft Update

Find out more about free software from Microsoft Update. [Click here for details.](#)

Passaggio 5. Verificare che Windows sia aggiornato. In caso contrario, aggiornare Windows.

Programs (5)

- Services**
- Component Services
- Octoshape Streaming Services
- services

Control Panel (5)

- View local services
- Manage Information Cards that are used to log on to online ser...
- Windows CardSpace
- Allow remote access to your computer

Passaggio 6. Immettere **Services** nella casella di ricerca disponibile nel menu **Start**.

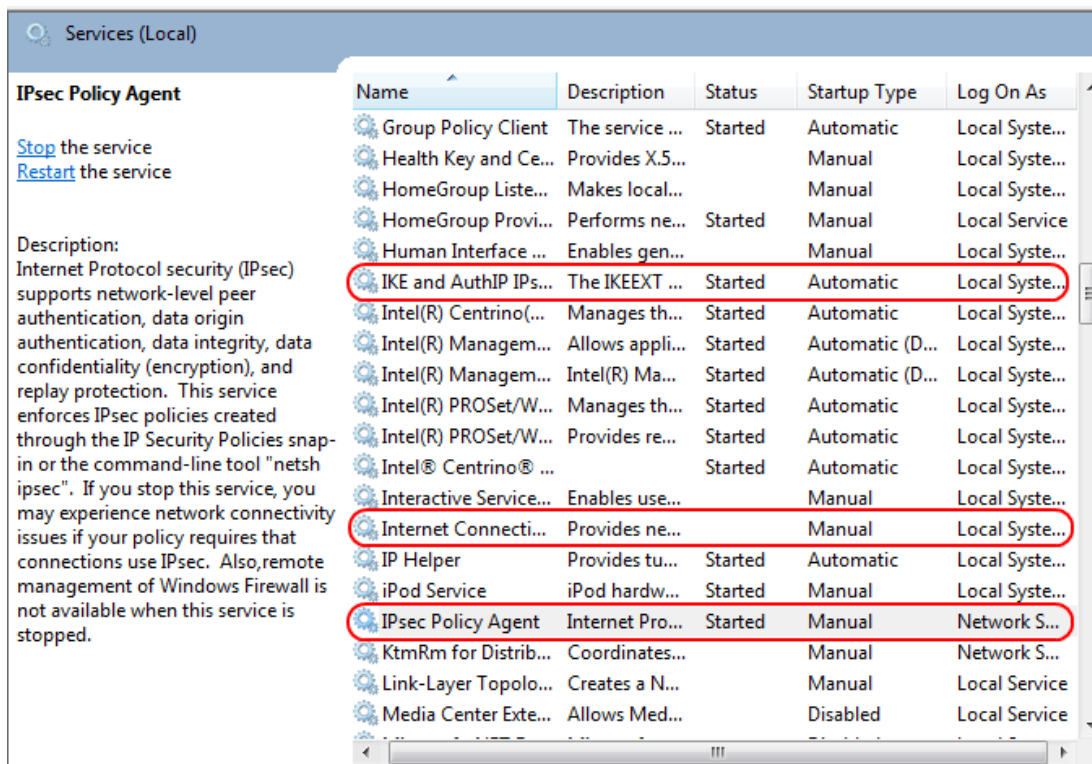
Passaggio 7. Fare clic su **Servizi** per aprire la finestra *Servizi*:

IPsec Policy Agent

[Stop](#) the service
[Restart](#) the service

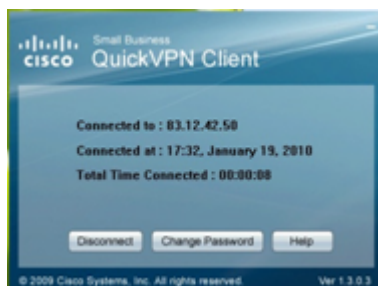
Description:
Internet Protocol security (IPsec) supports network-level peer authentication, data origin confidentiality (encryption), and replay protection. This service enforces IPsec policies created through the IP Security Policies snap-in or the command-line tool "netsh ipsec". If you stop this service, you may experience network connectivity issues if your policy requires that connections use IPsec. Also, remote management of Windows Firewall is not available when this service is stopped.

Name	Description	Status	Startup Type	Log On As
Group Policy Client	The service ...	Started	Automatic	Local Syste...
Health Key and Ce...	Provides X.5...		Manual	Local Syste...
HomeGroup Liste...	Makes local...		Manual	Local Syste...
HomeGroup Provi...	Performs ne...	Started	Manual	Local Service
Human Interface ...	Enables gen...		Manual	Local Syste...
IKE and AuthIP IPs...	The IKEEXT ...	Started	Automatic	Local Syste...
Intel(R) Centrino(...	Manages th...	Started	Automatic	Local Syste...
Intel(R) Managem...	Allows appli...	Started	Automatic (D...	Local Syste...
Intel(R) Managem...	Intel(R) Ma...	Started	Automatic (D...	Local Syste...
Intel(R) PROSet/W...	Manages th...	Started	Automatic	Local Syste...
Intel(R) PROSet/W...	Provides re...	Started	Automatic	Local Syste...
Intel® Centrino® ...		Started	Automatic	Local Syste...
Interactive Service...	Enables use...		Manual	Local Syste...
Internet Connecti...	Provides ne...		Manual	Local Syste...
IP Helper	Provides tu...	Started	Automatic	Local Syste...
iPod Service	iPod hardw...	Started	Manual	Local Syste...
IPsec Policy Agent	Internet Pro...	Started	Manual	Network S...
KtmRm for Distrib...	Coordinates...		Manual	Network S...
Link-Layer Topolo...	Creates a N...		Manual	Local Service
Media Center Ext...	Allows Med...		Disabled	Local Service



Passaggio 8. Fare clic con il pulsante destro del mouse sui servizi appropriati e scegliere **Avvia** o **Arresta** per avviare o terminare il servizio dalla finestra *Servizi*.

Passaggio 9. Connettersi con il client **QuickVPN**.



Passaggio 10. Viene visualizzata la finestra popup di QuickVPN Client con le seguenti informazioni:

- Connesso a - Specificare l'IP di destinazione a cui è connesso QuickVPN.
- Connected at (Connesso) - Specifica l'ora e la data in cui QuickVPN è connessa al router.
- Total Time Connected (Tempo totale connesso): specifica il tempo totale trascorso connesso a QuickVPN.

Nota: Nell'esempio corrente del router WRV210, l'IP di destinazione è 83.12.42.50. L'IP di destinazione può essere diverso a seconda dell'utente.