

# Come applicare gli elenchi degli accessi alle interfacce di composizione con un server TACACS+

## Sommario

[Introduzione](#)

[Prerequisiti](#)

[Requisiti](#)

[Componenti usati](#)

[Convenzioni](#)

[Configurazione](#)

[Esempio di rete](#)

[Configurazioni](#)

[Definizione degli elenchi degli accessi numerati sul router](#)

[Definizione degli elenchi degli accessi sul server](#)

[Verifica](#)

[Risoluzione dei problemi](#)

[Comandi per la risoluzione dei problemi](#)

[Informazioni correlate](#)

## [Introduzione](#)

Questo documento mostra come applicare gli elenchi degli accessi alle interfacce di composizione con un server TACACS+. Esistono due metodi:

- Definire l'elenco degli accessi numerato sul router e fare riferimento all'elenco degli accessi numerato sul server. Questa funzionalità è supportata nella maggior parte delle versioni del software Cisco IOS®.
- Definire l'intero elenco degli accessi sul server. Per questo metodo **per utente** è richiesto il software Cisco IOS versione 11.3 o successive.

**Nota:** per le connessioni ISDN, è necessario utilizzare il metodo **per utente** e configurare i profili virtuali sul router.

## [Prerequisiti](#)

### [Requisiti](#)

Nessun requisito specifico previsto per questo documento.

## Componenti usati

Le informazioni fornite in questo documento si basano sulle seguenti versioni software e hardware:

- Software Cisco IOS versione 11.1 o successive (definire gli elenchi degli accessi sul router)Software Cisco IOS versione 11.3 o successive (definire gli elenchi degli accessi sul server)
- Cisco Secure ACS per UNIXCisco Secure ACS per Windows 2.x e versioni successiveFreeware TACACS+

**Nota:** in questo documento si presume che l'accesso dial sia stato configurato in precedenza. In questo documento non vengono illustrati i dettagli della configurazione della composizione. Per informazioni su come configurare un server di accesso alla rete (NAS) per la composizione, consultare il documento sulla [configurazione del NAS per l'accesso di base](#).

Le informazioni discusse in questo documento fanno riferimento a dispositivi usati in uno specifico ambiente di emulazione. Su tutti i dispositivi menzionati nel documento la configurazione è stata ripristinata ai valori predefiniti. Se la rete è operativa, valutare attentamente eventuali conseguenze derivanti dall'uso dei comandi.

## Convenzioni

Per ulteriori informazioni sulle convenzioni usate, consultare il documento [Cisco sulle convenzioni nei suggerimenti tecnici](#).

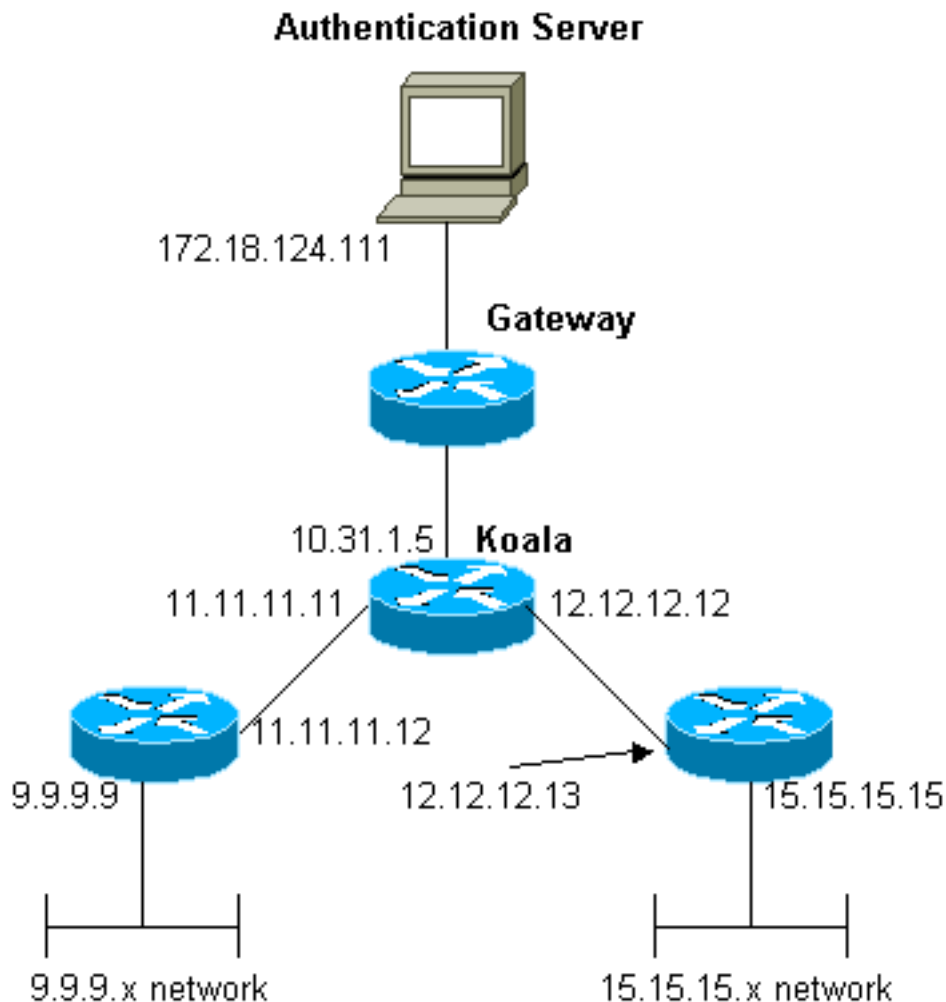
## Configurazione

In questa sezione vengono presentate le informazioni necessarie per configurare le funzionalità descritte più avanti nel documento.

**Nota:** per ulteriori informazioni sui comandi menzionati in questo documento, usare lo [strumento di ricerca](#) dei comandi (solo utenti [registrati](#)).

## Esempio di rete

Nel documento viene usata questa impostazione di rete:



**Nota:** le configurazioni consentono all'utente che riceve un indirizzo 1.1.1.x da "mypool" a ping (traffico ICMP) rete 9.9.9.x e Telnet (traffico TCP) rete 15.15.15.x. Non consente di eseguire il ping tra la rete 15.15.15.x o Telnet e la rete 9.9.9.x.

## Configurazioni

Nel documento vengono usate queste configurazioni.

- [Cisco serie 2500 Router con software Cisco IOS versione 12.0\(5\)T](#)
- [Cisco Secure ACS per UNIX 2.3](#)
- [Cisco Secure ACS per Windows 3.2](#)

## Definizione degli elenchi degli accessi numerati sul router

### Cisco serie 2500 Router con software Cisco IOS versione 12.0(5)T

```
Current configuration:
!
version 12.0
service timestamps debug uptime
service timestamps log uptime
no service password-encryption
!
hostname koala
```

```

!
aaa new-model
!
!--- These three lines of the configuration !--- are
specific to Cisco IOS Software Release 12.0.5.T and
later. !--- See the Commands for Other Cisco IOS
Releases section for commands !--- for other Cisco IOS
releases. ! aaa authentication login default local group
tacacs+
aaa authentication ppp default if-needed group tacacs+
aaa authorization network default group tacacs+
enable secret 5 $1$mnZQ$g6XdsgVnnYjEa.17v.Pijl
enable password ww
!
username john password 0 doe
!
ip subnet-zero
!
cns event-service server
!
interface Ethernet0
ip address 10.31.1.5 255.255.255.0
no ip directed-broadcast
no mop enabled
!
interface Serial0
ip address 11.11.11.11 255.255.255.0
no ip directed-broadcast
no ip mroute-cache
no fair-queue
!
interface Serial1
ip address 12.12.12.12 255.255.255.0
no ip directed-broadcast
!
interface Async1
ip unnumbered Ethernet0
no ip directed-broadcast
encapsulation ppp
no ip route-cache
no ip mroute-cache
async mode dedicated
peer default ip address pool mypool
fair-queue 64 16 0
no cdp enable
ppp authentication chap
!
ip local pool mypool 1.1.1.1 1.1.1.5
ip classless
ip route 0.0.0.0 0.0.0.0 10.31.1.1
ip route 9.9.9.0 255.255.255.0 11.11.11.12
ip route 15.15.15.0 255.255.255.0 12.12.12.13
no ip http server
!
!--- Access list 101 is defined on the NAS. access-list
101 permit icmp 1.1.1.0 0.0.0.255 9.9.9.0 0.0.0.255
access-list 101 permit tcp 1.1.1.0 0.0.0.255 15.15.15.0
0.0.0.255
dialer-list 1 protocol ip permit
dialer-list 1 protocol ipx permit
!
!--- Specify TACACS+ server host and key. tacacs-server
host 172.18.124.111
tacacs-server key cisco

```

```
!  
line con 0  
transport input none  
line 1  
modem InOut  
transport input all  
stopbits 1  
speed 115200  
flowcontrol hardware  
line 2 16  
line aux 0  
line vty 0 4  
password ww  
!  
end
```

## [Comandi per altre versioni di Cisco IOS](#)

**Nota:** per utilizzare questi comandi, rimuovere i comandi in grassetto dalla configurazione del [router Cisco serie 2500](#) e incollarli, come richiesto dalla versione software Cisco IOS in uso.

### **Software Cisco IOS release 11.3.3.T - 12.0.5.T**

```
aaa authentication login default tacacs+ local  
aaa authentication ppp default if-needed tacacs+ local  
aaa authorization network default tacacs+
```

### **Software Cisco IOS release 11.1-11.3.3.T**

```
aaa authentication login default tacacs+  
aaa authentication ppp default if-needed tacacs+  
aaa authorization network tacacs+
```

## [Configurazione server - TACACS+ Freeware](#)

```
user = chaprtr {  
chap = cleartext chaprtr  
service = ppp protocol = ip {  
inacl=101  
}  
}
```

## [Configurazione server - Cisco Secure UNIX - TACACS+](#)

```
rtp-berry# ./ViewProfile -p 9900 -u chaprtr  
User Profile Information  
user = chaprtr{  
profile_id = 182  
set server current-failed-logins = 1  
profile_cycle = 2  
service=ppp {  
protocol=lcp {  
}  
}  
protocol=ip {  
set inacl=101  
}  
}
```

```
password = chap "chaptr"
}
```

## [Configurazione server - Cisco Secure ACS per Windows 2.x e versioni successive - TACACS+](#)

Completare la procedura descritta di seguito per configurare Cisco Secure ACS per Windows in modo da specificare gli ACL da applicare al server NAS.

1. Fare clic su **Imposta gruppo**, selezionare il gruppo a cui appartiene l'utente e fare clic su **Modifica impostazioni**.
2. Fare clic sulle caselle di controllo **PPP IP**, **In access control list** e **PPP LCP** nella sezione TACACS+ Settings. Specificare il numero ACL da applicare (in questo caso 101) nella casella 'Nell'elenco di controllo di accesso'.
3. Per abilitare le opzioni **PPP IP** e **PPP LCP**, selezionare **Enabled** (Abilitato).

**CISCO SYSTEMS** Group Setup

Jump To: Access Restrictions

**Downloadable ACLs**

Assign IP ACL: -ACL DB EMPTY-

**TACACS+ Settings**

**PPP IP**

In access control list: 101

Out access control list:

Route:

Routing:  Enabled

**PPP LCP**

Callback line:

Callback rotary:

No callback verify:  Enabled

**Shell (exec)**

Access control list:

Auto command:

Submit Submit + Restart Cancel

[Debug del router di esempio](#)

```
koala#show debug
General OS:
TACACS access control debugging is on
AAA Authentication debugging is on
AAA Authorization debugging is on
koala#show ip access-lists
Extended IP access list 101
permit icmp 1.1.1.0 0.0.0.255 9.9.9.0 0.0.0.255 log (2 matches)
permit tcp 1.1.1.0 0.0.0.255 15.15.15.0 0.0.0.255 log (11 matches)
koala#
4d05h: As1 AAA/AUTHOR/FSM: (0): LCP succeeds trivially
4d05h: %LINK-3-UPDOWN: Interface Async1, changed state to up
4d05h: AAA: parse name=Async1 idb type=10 tty=1
4d05h: AAA: name=Async1 flags=0x11 type=4 shelf=0 slot=0
adapter=0 port=1 channel=0
4d05h: AAA/MEMORY: create_user (0x54F934) user='chaptr'
ruser='' port='Async1' rem_addr='async' authen_type=CHAP
service=PPP priv=1
4d05h: AAA/AUTHEN/START (1203050692): port='Async1' list=''
action=LOGIN service=PPP
4d05h: AAA/AUTHEN/START (1203050692): using "default" list
4d05h: AAA/AUTHEN (1203050692): status = UNKNOWN
4d05h: AAA/AUTHEN/START (1203050692): Method=tacacs+ (tacacs+)
4d05h: TAC+: send AUTHEN/START packet ver=193 id=1203050692
4d05h: TAC+: Using default tacacs server-group "tacacs+" list.
4d05h: TAC+: Opening TCP/IP to 172.18.124.111/49 timeout=5
4d05h: TAC+: Opened TCP/IP handle 0x538778 to 172.18.124.111/49
4d05h: TAC+: 172.18.124.111 (1203050692) AUTHEN/START/LOGIN/CHAP queued
4d05h: TAC+: (1203050692) AUTHEN/START/LOGIN/CHAP processed
4d05h: TAC+: ver=192 id=1203050692 received AUTHEN status = GETPASS
4d05h: TAC+: Closing TCP/IP 0x538778 connection to 172.18.124.111/49
4d05h: TAC+: Opening TCP/IP to 172.18.124.111/49 timeout=5
4d05h: TAC+: Opened TCP/IP handle 0x538BBC to 172.18.124.111/49
4d05h: TAC+: Opened 172.18.124.111 index=1
4d05h: AAA: parse name=Async1 idb type=-1 tty=-1
4d05h: AAA: name=Async1 flags=0x11 type=4 shelf=0 slot=0 adapter=0
port=1 channel=0
4d05h: AAA/MEMORY: create_user (0x19FCF8) user='chaptr' ruser=''
port='Async1' rem_addr='async' authen_type=CHAP service=PPP priv=1
4d05h: TAC+: rev0 inbound chap for id=1203050692 using id=2966879003
4d05h: TAC+: 172.18.124.111 (2966879003) AUTHEN/START/SENDPASS/CHAP queued
4d05h: TAC+: (2966879003) AUTHEN/START/SENDPASS/CHAP processed
4d05h: TAC+: ver=192 id=2966879003 received AUTHEN status = PASS
4d05h: TAC+: rev0 inbound chap SENDPASS status=PASS for id=1203050692
4d05h: TAC+: rev0 inbound chap MD5 compare OK
4d05h: AAA/MEMORY: free_user (0x19FCF8) user='chaptr' ruser=''
port='Async1' rem_addr='async' authen_type=CHAP service=PPP priv=1
4d05h: TAC+: Closing TCP/IP 0x538BBC connection to 172.18.124.111/49
4d05h: AAA/AUTHEN (1203050692): status = PASS
4d05h: As1 AAA/AUTHOR/LCP: Authorize LCP
4d05h: As1 AAA/AUTHOR/LCP (3002156107): Port='Async1' list='' service=NET
4d05h: AAA/AUTHOR/LCP: As1 (3002156107) user='chaptr'
4d05h: As1 AAA/AUTHOR/LCP (3002156107): send AV service=ppp
4d05h: As1 AAA/AUTHOR/LCP (3002156107): send AV protocol=lcp
4d05h: As1 AAA/AUTHOR/LCP (3002156107): found list "default"
4d05h: As1 AAA/AUTHOR/LCP (3002156107): Method=tacacs+ (tacacs+)
4d05h: AAA/AUTHOR/TAC+: (3002156107): user=chaptr
4d05h: AAA/AUTHOR/TAC+: (3002156107): send AV service=ppp
4d05h: AAA/AUTHOR/TAC+: (3002156107): send AV protocol=lcp
4d05h: TAC+: using previously set server 172.18.124.111 from group tacacs+
4d05h: TAC+: Opening TCP/IP to 172.18.124.111/49 timeout=5
4d05h: TAC+: Opened TCP/IP handle 0x539000 to 172.18.124.111/49
```

```
4d05h: TAC+: Opened 172.18.124.111 index=1
4d05h: TAC+: 172.18.124.111 (3002156107) AUTHOR/START queued
4d05h: TAC+: (3002156107) AUTHOR/START processed
4d05h: TAC+: (3002156107): received author response status = PASS_ADD
4d05h: TAC+: Closing TCP/IP 0x539000 connection to 172.18.124.111/49
4d05h: As1 AAA/AUTHOR (3002156107): Post authorization status = PASS_ADD
4d05h: As1 AAA/AUTHOR/FSM: (0): Can we start IPCP?
4d05h: As1 AAA/AUTHOR/FSM (1577158668): Port='Async1' list='' service=NET
4d05h: AAA/AUTHOR/FSM: As1 (1577158668) user='chaptrtr'
4d05h: As1 AAA/AUTHOR/FSM (1577158668): send AV service=ppp
4d05h: As1 AAA/AUTHOR/FSM (1577158668): send AV protocol=ip
4d05h: As1 AAA/AUTHOR/FSM (1577158668): found list "default"
4d05h: As1 AAA/AUTHOR/FSM (1577158668): Method=tacacs+ (tacacs+)
4d05h: AAA/AUTHOR/TAC+: (1577158668): user=chaptrtr
4d05h: AAA/AUTHOR/TAC+: (1577158668): send AV service=ppp
4d05h: AAA/AUTHOR/TAC+: (1577158668): send AV protocol=ip
4d05h: TAC+: using previously set server 172.18.124.111 from group tacacs+
4d05h: TAC+: Opening TCP/IP to 172.18.124.111/49 timeout=5
4d05h: TAC+: Opened TCP/IP handle 0x539444 to 172.18.124.111/49
4d05h: TAC+: Opened 172.18.124.111 index=1
4d05h: TAC+: 172.18.124.111 (1577158668) AUTHOR/START queued
4d05h: TAC+: (1577158668) AUTHOR/START processed
4d05h: TAC+: (1577158668): received author response status = PASS_ADD
4d05h: TAC+: Closing TCP/IP 0x539444 connection to 172.18.124.111/49
4d05h: As1 AAA/AUTHOR (1577158668): Post authorization status = PASS_ADD
4d05h: As1 AAA/AUTHOR/FSM: We can start IPCP
4d05h: %LINEPROTO-5-UPDOWN: Line protocol on Interface Async1,
changed state to up
4d05h: As1 AAA/AUTHOR/IPCP: Start. Her address 0.0.0.0, we want 0.0.0.0
4d05h: As1 AAA/AUTHOR/IPCP: Processing AV service=ppp
4d05h: As1 AAA/AUTHOR/IPCP: Processing AV protocol=ip
4d05h: As1 AAA/AUTHOR/IPCP: Processing AV inacl=101
4d05h: As1 AAA/AUTHOR/IPCP: Authorization succeeded
4d05h: As1 AAA/AUTHOR/IPCP: Done. Her address 0.0.0.0, we want 0.0.0.0
4d05h: As1 AAA/AUTHOR/IPCP: Start. Her address 0.0.0.0, we want 1.1.1.2
4d05h: As1 AAA/AUTHOR/IPCP: Processing AV service=ppp
4d05h: As1 AAA/AUTHOR/IPCP: Processing AV protocol=ip
  !--- Apply ACL 101 in the inbound direction. 4d05h: As1 AAA/AUTHOR/IPCP: Processing AV
inacl=101
4d05h: As1 AAA/AUTHOR/IPCP: Authorization succeeded
4d05h: As1 AAA/AUTHOR/IPCP: Done. Her address 0.0.0.0, we want 1.1.1.2
4d05h: As1 AAA/AUTHOR/IPCP: Start. Her address 1.1.1.2, we want 1.1.1.2
4d05h: As1 AAA/AUTHOR/IPCP (1659098608): Port='Async1' list=''
service=NET
4d05h: AAA/AUTHOR/IPCP: As1 (1659098608) user='chaptrtr'
4d05h: As1 AAA/AUTHOR/IPCP (1659098608): send AV service=ppp
4d05h: As1 AAA/AUTHOR/IPCP (1659098608): send AV protocol=ip
4d05h: As1 AAA/AUTHOR/IPCP (1659098608): send AV addr*1.1.1.2
4d05h: As1 AAA/AUTHOR/IPCP (1659098608): found list "default"
4d05h: As1 AAA/AUTHOR/IPCP (1659098608): Method=tacacs+ (tacacs+)
4d05h: AAA/AUTHOR/TAC+: (1659098608): user=chaptrtr
4d05h: AAA/AUTHOR/TAC+: (1659098608): send AV service=ppp
4d05h: AAA/AUTHOR/TAC+: (1659098608): send AV protocol=ip
4d05h: AAA/AUTHOR/TAC+: (1659098608): send AV addr*1.1.1.2
4d05h: TAC+: using previously set server 172.18.124.111 from
group tacacs+
4d05h: TAC+: Opening TCP/IP to 172.18.124.111/49 timeout=5
4d05h: TAC+: Opened TCP/IP handle 0x538BBC to 172.18.124.111/49
4d05h: TAC+: Opened 172.18.124.111 index=1
4d05h: TAC+: 172.18.124.111 (1659098608) AUTHOR/START queued
4d05h: TAC+: (1659098608) AUTHOR/START processed
4d05h: TAC+: (1659098608): received author response status = PASS_REPL
4d05h: TAC+: Closing TCP/IP 0x538BBC connection to 172.18.124.111/49
4d05h: As1 AAA/AUTHOR (1659098608): Post authorization status = PASS_REPL
```



```

4d05h: As1 AAA/AUTHOR/IPCP: Reject 1.1.1.2, using 1.1.1.2
4d05h: As1 AAA/AUTHOR/IPCP: Processing AV service=ppp
4d05h: As1 AAA/AUTHOR/IPCP: Processing AV protocol=ip
4d05h: As1 AAA/AUTHOR/IPCP: Processing AV inacl=101
4d05h: As1 AAA/AUTHOR/IPCP: Processing AV addr*1.1.1.2
4d05h: As1 AAA/AUTHOR/IPCP: Authorization succeeded
4d05h: As1 AAA/AUTHOR/IPCP: Done. Her address 1.1.1.2, we want 1.1.1.2
4d05h: %SEC-6-IPACCESSLOGDP: list 101 permitted icmp 1.1.1.2 ->
9.9.9.9 (0/0), 3 packets
koala#show ip access-lists
Extended IP access list 101
permit icmp 1.1.1.0 0.0.0.255 9.9.9.0 0.0.0.255 log (5 matches)
permit tcp 1.1.1.0 0.0.0.255 15.15.15.0 0.0.0.255 log (11 matches)
koala#

```

## Definizione degli elenchi degli accessi sul server

**Nota:** non è necessario passare le istruzioni route dal server al router. L'utente che effettua la connessione telefonica in genere sceglie i percorsi dal router. La presenza delle istruzioni di routing sul router dipende dal fatto che le route vengano passate dal server o prelevate dal router:

```

ip route 9.9.9.0 255.255.255.0 11.11.11.12
ip route 15.15.15.0 255.255.255.0 12.12.12.13

```

In questa configurazione di esempio, il passaggio delle route dal server ha solo scopo illustrativo.

### Configurazione router

```

Current configuration:
!
version 12.0
service timestamps debug uptime
service timestamps log uptime
no service password-encryption
!
hostname koala
!
aaa new-model
!
!--- These three lines of the configuration !--- are
specific to Cisco IOS Software Release 12.0.5.T and
later. !--- See the Commands for Other IOS Releases
section for !--- commands for other Cisco IOS Software
releases. !
aaa authentication login default group
tacacs+ none
aaa authentication ppp default if-needed group tacacs+
aaa authorization network default group tacacs+
enable secret 5 $1$mnZQ$g6XdsgVnnYjEa.l7v.Pijl
enable password ww
!
username john password 0 doe
!
ip subnet-zero
!
cns event-service server
!
interface Ethernet0
ip address 10.31.1.5 255.255.255.0
no ip directed-broadcast
no mop enabled
!

```

```

interface Serial0
ip address 11.11.11.11 255.255.255.0
no ip directed-broadcast
no ip mroute-cache
no fair-queue
!
interface Serial1
ip address 12.12.12.12 255.255.255.0
no ip directed-broadcast
!
interface Async1
ip unnumbered Ethernet0
no ip directed-broadcast
encapsulation ppp
no ip route-cache
no ip mroute-cache
async mode dedicated
peer default ip address pool mypool
fair-queue 64 16 0
no cdp enable
ppp authentication chap
!
ip local pool mypool 1.1.1.1 1.1.1.5
ip classless
ip route 0.0.0.0 0.0.0.0 10.31.1.1
ip route 172.17.192.0 255.255.255.0 10.31.1.1
ip route 172.18.124.0 255.255.255.0 10.31.1.1
ip route 172.18.125.0 255.255.255.0 10.31.1.1
no ip http server
!
dialer-list 1 protocol ip permit
dialer-list 1 protocol ipx permit
!
tacacs-server host 172.18.124.111
tacacs-server key cisco
!
line con 0
transport input none
line 1
autoselect during-login
autoselect ppp
modem InOut
transport input all
stopbits 1
speed 115200
flowcontrol hardware
line 2 16
line aux 0
line vty 0 4
password ww
!
end

```

### [Comandi per altre versioni di Cisco IOS](#)

**Nota:** per utilizzare questi comandi, rimuovere i comandi in grassetto dalla configurazione del [router](#) e incollarli, come richiesto dalla versione software Cisco IOS in uso.

**Software Cisco IOS release 11.3.3.T - 12.0.5.T**

```
aaa authentication login default tacacs+ local
aaa authentication ppp default if-needed tacacs+ local
aaa authorization network default tacacs+
```

## Software Cisco IOS release 11.3-11.3.3.T

```
aaa authentication login default tacacs+
aaa authentication ppp default if-needed tacacs+
aaa authorization network tacacs+
```

### [Configurazione server - TACACS+ Freeware](#)

```
user = chaprtr {
chap = cleartext chaprtr
service = ppp protocol = ip {
route#1 = "9.9.9.9 255.255.255.255 11.11.11.12"
route#2 = "15.15.15.15 255.255.255.255 12.12.12.13"
route#3 = "15.15.15.16 255.255.255.255 12.12.12.13"
inacl#1 = "permit icmp 1.1.1.0 0.0.0.255 9.9.9.0 0.0.0.255"
inacl#2 = "permit tcp 1.1.1.0 0.0.0.255 15.15.15.0 0.0.0.255"
}
}
```

### [Configurazione server - Cisco Secure UNIX - TACACS+](#)

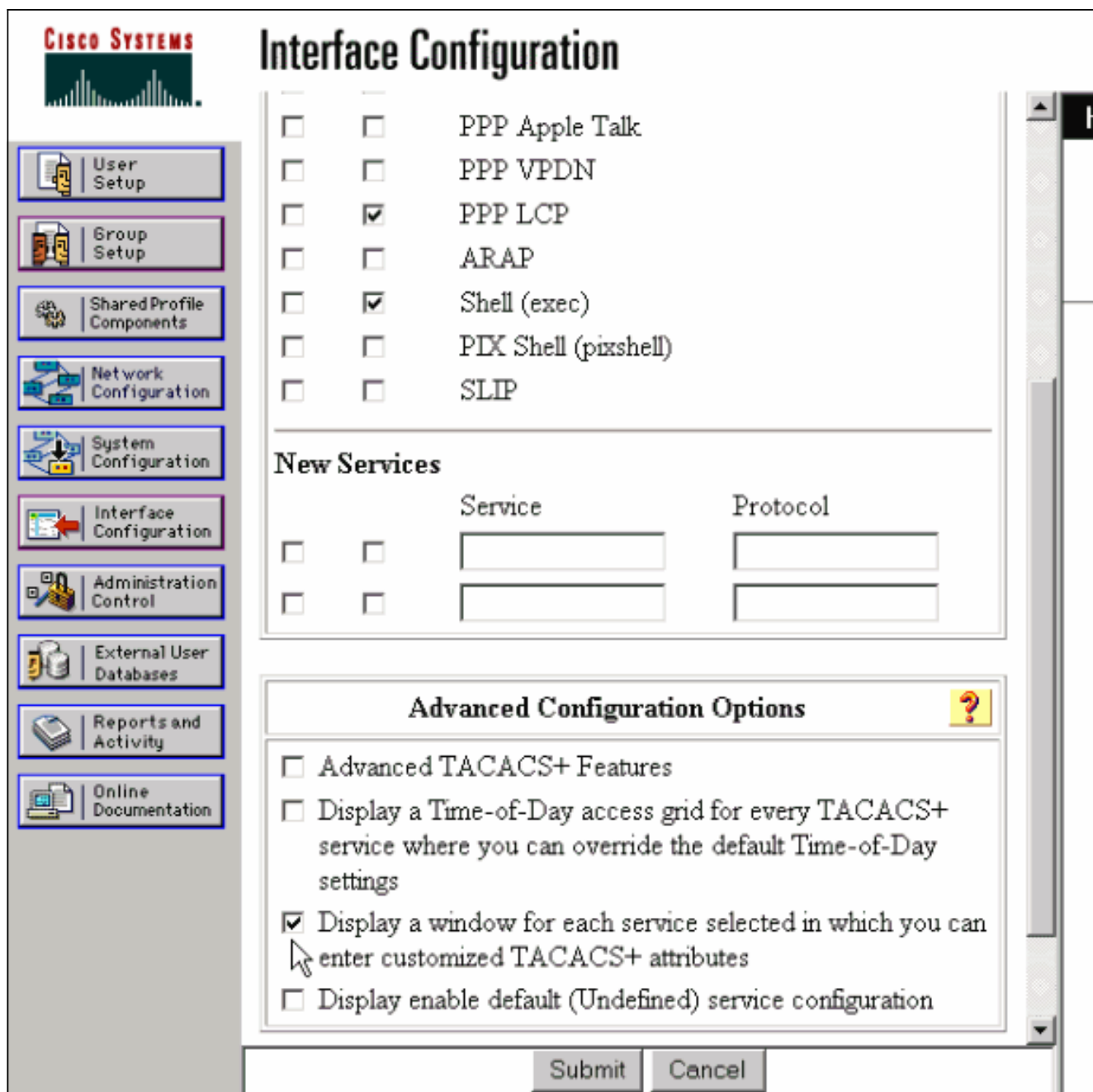
```
rtp-berry# ./ViewProfile -p 9900 -u chaprtr
User Profile Information
user = chaprtr{
profile_id = 183
set server current-failed-logins = 1
profile_cycle = 4
service=ppp {
protocol=lcp {
}
protocol=ip {
set route#1="9.9.9.9 255.255.255.255 11.11.11.12"
set route#2="15.15.15.15 255.255.255.255 12.12.12.13"
set route#3="15.15.15.16 255.255.255.255 12.12.12.13"
set inacl#1="permit icmp 1.1.1.0 0.0.0.255 9.9.9.0 0.0.0.255"
set inacl#2="permit tcp 1.1.1.0 0.0.0.255 15.15.15.0 0.0.0.255"
}
}

password = chap "chaprtr"
}
```

### [Configurazione server - Cisco Secure Windows 2.x - TACACS+](#)

Completare questa procedura per configurare Cisco Secure for Windows in modo da passare gli ACL al server NAS.

1. Fare clic su **Interface Configuration** (Configurazione interfaccia) e selezionare **TACACS+ Cisco**.
2. Selezionare **Display a window for each service selected in cui è possibile immettere gli attributi TACACS+ personalizzati** nella sezione 'Advanced Configuration Options' e fare clic su **Submit**.



3. Fare clic su **Imposta gruppo**, selezionare il gruppo a cui appartiene l'utente e fare clic su **Modifica impostazioni**.
4. Andare alla sezione PPP IP e fare clic sulle caselle di controllo **PPP IP, Attributi personalizzati** e **Abilita** in Impostazioni TACACS+. Immettere il testo visualizzato nella casella Attributi personalizzati e fare clic su **Invia**.

```

route#1=9.9.9.9 255.255.255.255 11.11.11.12
route#2=15.15.15.15 255.255.255.255 12.12.12.13
route#3=15.15.15.16 255.255.255.255 12.12.12.13
inacl#1=permit icmp 1.1.1.0 0.0.0.255 9.9.9.0 0.0.0.255
inacl#2=permit tcp 1.1.1.0 0.0.0.255 15.15.15.0 0.0.0.255

```

## [Debug del router di esempio](#)

Questo profilo utente è stato utilizzato per creare l'output di debug.

```

chaptr
{
login = cleartext cisco
chap = cleartext
chaptr service = ppp
protocol = ip
{
route#1 = "9.9.9.9 255.255.255.255 11.11.11.12"
route#2 = "15.15.15.15 255.255.255.255 12.12.12.13"
route#3 = "15.15.15.16 255.255.255.255 12.12.12.13"
inacl#1 = "permit icmp 1.1.1.0 0.0.0.255 9.9.9.0 0.0.0.255"
inacl#2 = "permit tcp 1.1.1.0 0.0.0.255 15.15.15.0 0.0.0.255"
}
}

```

koala#

```
*Mar 1 01:22:39.963: As1 LCP: I CONFREQ [Closed] id 0 len 23
*Mar 1 01:22:39.967: As1 LCP: ACCM 0x00000000 (0x020600000000)
*Mar 1 01:22:39.971: As1 LCP: MagicNumber 0x000034BD (0x0506000034BD)
*Mar 1 01:22:39.971: As1 LCP: PFC (0x0702)
*Mar 1 01:22:39.975: As1 LCP: ACFC (0x0802)
*Mar 1 01:22:39.975: As1 LCP: Callback 6 (0x0D0306)
*Mar 1 01:22:39.979: As1 LCP: Lower layer not up, Fast Starting
*Mar 1 01:22:39.983: As1 PPP: Treating connection as a dedicated line
*Mar 1 01:22:39.983: As1 PPP: Phase is ESTABLISHING, Active Open [0 sess, 0 load]
*Mar 1 01:22:39.987: As1 AAA/AUTHOR/FSM: (0): LCP succeeds trivially
*Mar 1 01:22:39.991: As1 LCP: O CONFREQ [Closed] id 30 len 25
*Mar 1 01:22:39.995: As1 LCP: ACCM 0x000A0000 (0x0206000A0000)
*Mar 1 01:22:39.999: As1 LCP: AuthProto CHAP (0x0305C22305)
*Mar 1 01:22:40.003: As1 LCP: MagicNumber 0xE069F1B8 (0x0506E069F1B8)
*Mar 1 01:22:40.003: As1 LCP: PFC (0x0702)
*Mar 1 01:22:40.007: As1 LCP: ACFC (0x0802)
*Mar 1 01:22:40.011: As1 LCP: O CONFREQ [REQsent] id 0 len 7
*Mar 1 01:22:40.011: As1 LCP: Callback 6 (0x0D0306)
01:22:40: %LINK-3-UPDOWN: Interface Async1, changed state to up
*Mar 1 01:22:40.139: As1 LCP: I CONFACK [REQsent] id 30 len 25
*Mar 1 01:22:40.143: As1 LCP: ACCM 0x000A0000 (0x0206000A0000)
*Mar 1 01:22:40.143: As1 LCP: AuthProto CHAP (0x0305C22305)
*Mar 1 01:22:40.147: As1 LCP: MagicNumber 0xE069F1B8 (0x0506E069F1B8)
*Mar 1 01:22:40.151: As1 LCP: PFC (0x0702)
*Mar 1 01:22:40.151: As1 LCP: ACFC (0x0802)
*Mar 1 01:22:40.155: As1 LCP: I CONFREQ [ACKrcvd] id 1 len 20
*Mar 1 01:22:40.159: As1 LCP: ACCM 0x00000000 (0x020600000000)
*Mar 1 01:22:40.163: As1 LCP: MagicNumber 0x000034BD (0x0506000034BD)
*Mar 1 01:22:40.163: As1 LCP: PFC (0x0702)
*Mar 1 01:22:40.167: As1 LCP: ACFC (0x0802)
*Mar 1 01:22:40.171: As1 LCP: O CONFACK [ACKrcvd] id 1 len 20
*Mar 1 01:22:40.171: As1 LCP: ACCM 0x00000000 (0x020600000000)
*Mar 1 01:22:40.175: As1 LCP: MagicNumber 0x000034BD (0x0506000034BD)
*Mar 1 01:22:40.179: As1 LCP: PFC (0x0702)
*Mar 1 01:22:40.179: As1 LCP: ACFC (0x0802)
*Mar 1 01:22:40.183: As1 LCP: State is Open
*Mar 1 01:22:40.183: As1 PPP: Phase is AUTHENTICATING, by this end
[0 sess, 1 load]
*Mar 1 01:22:40.187: As1 CHAP: O CHALLENGE id 10 len 26 from "koala"
*Mar 1 01:22:40.295: As1 LCP: I IDENTIFY [Open] id 2 len 18 magic
0x000034BD MSRASV4.00
*Mar 1 01:22:40.307: As1 LCP: I IDENTIFY [Open] id 3 len 21 magic
0x000034BD MSRAS-1-ZEKIE
*Mar 1 01:22:40.315: As1 CHAP: I RESPONSE id 10 len 28 from "chaptrtr"
*Mar 1 01:22:40.323: AAA: parse name=Async1 idb type=10 tty=1
*Mar 1 01:22:40.323: AAA: name=Async1 flags=0x11 type=4 shelf=0 slot=0
adapter=0 port=1 channel=0
*Mar 1 01:22:40.327: AAA/MEMORY: create_user (0x4ED58C) user='chaptrtr'
ruser='' port='Async1' rem_addr='async' authen_type=CHAP service=PPP
priv=1
*Mar 1 01:22:40.331: AAA/AUTHEN/START (2439833946): port='Async1'
list='' action=LOGIN service=PPP
*Mar 1 01:22:40.335: AAA/AUTHEN/START (2439833946): using "default" list
*Mar 1 01:22:40.339: AAA/AUTHEN (2439833946): status = UNKNOWN
*Mar 1 01:22:40.339: AAA/AUTHEN/START (2439833946): Method=tacacs+ (tacacs+)
*Mar 1 01:22:40.343: TAC+: send AUTHEN/START packet ver=193 id=2439833946
*Mar 1 01:22:40.347: TAC+: Using default tacacs server-group "tacacs+" list.
*Mar 1 01:22:40.347: TAC+: Opening TCP/IP to 172.18.124.111/49 timeout=5
*Mar 1 01:22:40.359: TAC+: Opened TCP/IP handle 0x4EDDF8 to 172.18.124.111/49
*Mar 1 01:22:40.367: TAC+: 172.18.124.111 (2439833946)
AUTHEN/START/LOGIN/CHAP queued
*Mar 1 01:22:40.667: TAC+: (2439833946) AUTHEN/START/LOGIN/CHAP processed
*Mar 1 01:22:40.671: TAC+: ver=192 id=2439833946 received AUTHEN
```

```
status = GETPASS
*Mar 1 01:22:40.675: TAC+: Closing TCP/IP 0x4EDDF8 connection to
172.18.124.111/49
*Mar 1 01:22:40.679: TAC+: Opening TCP/IP to 172.18.124.111/49 timeout=5
*Mar 1 01:22:40.695: TAC+: Opened TCP/IP handle 0x4EE23C to 172.18.124.111/49
*Mar 1 01:22:40.695: TAC+: Opened 172.18.124.111 index=1
*Mar 1 01:22:40.699: AAA: parse name=Async1 idb type=-1 tty=-1
*Mar 1 01:22:40.703: AAA: name=Async1 flags=0x11 type=4 shelf=0 slot=0
adapter=0 port=1 channel=0
*Mar 1 01:22:40.707: AAA/MEMORY: create_user (0x4EC300) user='chaptrtr'
ruser='' port='Async1' rem_addr='async' authen_type=CHAP service=PPP priv=1
*Mar 1 01:22:40.711: TAC+: rev0 inbound chap for id=2439833946 using
id=1730351499
*Mar 1 01:22:40.715: TAC+: 172.18.124.111 (1730351499)
AUTHEN/START/SENDPASS/CHAP queued
*Mar 1 01:22:40.915: TAC+: (1730351499) AUTHEN/START/SENDPASS/CHAP processed
*Mar 1 01:22:40.919: TAC+: ver=192 id=1730351499 received AUTHEN
status = PASS
*Mar 1 01:22:40.923: TAC+: rev0 inbound chap SENDPASS status=PASS
for id=2439833946
*Mar 1 01:22:40.927: TAC+: rev0 inbound chap MD5 compare OK
*Mar 1 01:22:40.927: AAA/MEMORY: free_user (0x4EC300) user='chaptrtr'
ruser='' port='Async1' rem_addr='async' authen_type=CHAP service=PPP
priv=1
*Mar 1 01:22:40.935: TAC+: Closing TCP/IP 0x4EE23C connection to
172.18.124.111/49
*Mar 1 01:22:40.939: AAA/AUTHEN (2439833946): status = PASS
*Mar 1 01:22:40.943: As1 AAA/AUTHOR/LCP: Authorize LCP
*Mar 1 01:22:40.947: As1 AAA/AUTHOR/LCP (4250537500): Port='Async1'
list='' service=NET
*Mar 1 01:22:40.947: AAA/AUTHOR/LCP: As1 (4250537500) user='chaptrtr'
*Mar 1 01:22:40.951: As1 AAA/AUTHOR/LCP (4250537500): send AV service=ppp
*Mar 1 01:22:40.955: As1 AAA/AUTHOR/LCP (4250537500): send AV protocol=lcp
*Mar 1 01:22:40.955: As1 AAA/AUTHOR/LCP (4250537500): found list "default"
*Mar 1 01:22:40.959: As1 AAA/AUTHOR/LCP (4250537500):
Method=tacacs+ (tacacs+)
*Mar 1 01:22:40.963: AAA/AUTHOR/TAC+: (4250537500): user=chaptrtr
*Mar 1 01:22:40.963: AAA/AUTHOR/TAC+: (4250537500): send AV service=ppp
*Mar 1 01:22:40.967: AAA/AUTHOR/TAC+: (4250537500): send AV protocol=lcp
*Mar 1 01:22:40.971: TAC+: using previously set server 172.18.124.111
from group tacacs+
*Mar 1 01:22:40.971: TAC+: Opening TCP/IP to 172.18.124.111/49 timeout=5
*Mar 1 01:22:40.987: TAC+: Opened TCP/IP handle 0x4EE680 to 172.18.124.111/49
*Mar 1 01:22:40.991: TAC+: Opened 172.18.124.111 index=1
*Mar 1 01:22:40.999: TAC+: 172.18.124.111 (4250537500) AUTHOR/START queued
*Mar 1 01:22:41.195: TAC+: (4250537500) AUTHOR/START processed
*Mar 1 01:22:41.199: TAC+: (4250537500): received author response
status = PASS_ADD
*Mar 1 01:22:41.203: TAC+: Closing TCP/IP 0x4EE680 connection to
172.18.124.111/49
*Mar 1 01:22:41.207: As1 AAA/AUTHOR (4250537500): Post authorization
status = PASS_ADD
*Mar 1 01:22:41.215: As1 CHAP: 0 SUCCESS id 10 len 4
*Mar 1 01:22:41.219: As1 PPP: Phase is UP [0 sess, 0 load]
*Mar 1 01:22:41.223: As1 AAA/AUTHOR/FSM: (0): Can we start IPCP?
*Mar 1 01:22:41.223: As1 AAA/AUTHOR/FSM (2403262371): Port='Async1'
list='' service=NET
*Mar 1 01:22:41.227: AAA/AUTHOR/FSM: As1 (2403262371) user='chaptrtr'
*Mar 1 01:22:41.231: As1 AAA/AUTHOR/FSM (2403262371): send AV service=ppp
*Mar 1 01:22:41.231: As1 AAA/AUTHOR/FSM (2403262371): send AV protocol=ip
*Mar 1 01:22:41.235: As1 AAA/AUTHOR/FSM (2403262371): found list "default"
*Mar 1 01:22:41.239: As1 AAA/AUTHOR/FSM (2403262371):
Method=tacacs+ (tacacs+)
*Mar 1 01:22:41.239: AAA/AUTHOR/TAC+: (2403262371): user=chaptrtr
```

```
*Mar 1 01:22:41.243: AAA/AUTHOR/TAC+: (2403262371): send AV service=ppp
*Mar 1 01:22:41.243: AAA/AUTHOR/TAC+: (2403262371): send AV protocol=ip
*Mar 1 01:22:41.247: TAC+: using previously set server 172.18.124.111
from group tacacs+
*Mar 1 01:22:41.251: TAC+: Opening TCP/IP to 172.18.124.111/49 timeout=5
*Mar 1 01:22:41.263: TAC+: Opened TCP/IP handle 0x4EEAC4 to
172.18.124.111/49
*Mar 1 01:22:41.267: TAC+: Opened 172.18.124.111 index=1
*Mar 1 01:22:41.275: TAC+: 172.18.124.111 (2403262371) AUTHOR/START queued
*Mar 1 01:22:41.323: As1 CCP: I CONFREQ [Not negotiated] id 4 len 12
*Mar 1 01:22:41.327: As1 CCP: OUI (0x0002)
*Mar 1 01:22:41.327: As1 CCP: MS-PPC supported bits 0x00007080
(0x120600007080)
*Mar 1 01:22:41.335: As1 LCP: O PROTREQ [Open] id 31 len 18 protocol CCP
(0x80FD0104000C0002120600007080)
*Mar 1 01:22:41.339: As1 IPCP: I CONFREQ [Closed] id 5 len 40
*Mar 1 01:22:41.343: As1 IPCP: CompressType VJ 15 slots CompressSlotID
(0x0206002D0F01)
*Mar 1 01:22:41.347: As1 IPCP: Address 0.0.0.0 (0x030600000000)
*Mar 1 01:22:41.351: As1 IPCP: PrimaryDNS 0.0.0.0 (0x810600000000)
*Mar 1 01:22:41.355: As1 IPCP: PrimaryWINS 0.0.0.0 (0x820600000000)
*Mar 1 01:22:41.359: As1 IPCP: SecondaryDNS 0.0.0.0 (0x830600000000)
*Mar 1 01:22:41.363: As1 IPCP: SecondaryWINS 0.0.0.0 (0x840600000000)
*Mar 1 01:22:41.607: TAC+: (2403262371) AUTHOR/START processed
*Mar 1 01:22:41.623: TAC+: (2403262371): received author response
status = PASS_ADD
*Mar 1 01:22:41.627: TAC+: Closing TCP/IP 0x4EEAC4 connection to
172.18.124.111/49
*Mar 1 01:22:41.635: As1 AAA/AUTHOR (2403262371): Post authorization
status = PASS_ADD
*Mar 1 01:22:41.647: As1 AAA/AUTHOR/FSM: We can start IPCP
*Mar 1 01:22:41.651: As1 IPCP: O CONFREQ [Closed] id 7 len 10
*Mar 1 01:22:41.655: As1 IPCP: Address 10.31.1.5 (0x03060A1F0105)
*Mar 1 01:22:41.659: As1 AAA/AUTHOR/FSM: (0): Can we start CDPCP?
*Mar 1 01:22:41.663: As1 AAA/AUTHOR/FSM (840307497): Port='Async1'
list='' service=NET
*Mar 1 01:22:41.667: AAA/AUTHOR/FSM: As1 (840307497) user='chaptrtr'
*Mar 1 01:22:41.671: As1 AAA/AUTHOR/FSM (840307497): send AV service=ppp
*Mar 1 01:22:41.671: As1 AAA/AUTHOR/FSM (840307497): send AV protocol=cdp
*Mar 1 01:22:41.675: As1 AAA/AUTHOR/FSM (840307497): found list "default"
*Mar 1 01:22:41.675: As1 AAA/AUTHOR/FSM (840307497): Method=tacacs+
(tacacs+)
*Mar 1 01:22:41.679: AAA/AUTHOR/TAC+: (840307497): user=chaptrtr
*Mar 1 01:22:41.683: AAA/AUTHOR/TAC+: (840307497): send AV service=ppp
*Mar 1 01:22:41.683: AAA/AUTHOR/TAC+: (840307497): send AV protocol=cdp
*Mar 1 01:22:41.687: TAC+: using previously set server 172.18.124.111
from group tacacs+
*Mar 1 01:22:41.691: TAC+: Opening TCP/IP to 172.18.124.111/49 timeout=5
*Mar 1 01:22:41.703: TAC+: Opened TCP/IP handle 0x4EE23C to
172.18.124.111/49
*Mar 1 01:22:41.707: TAC+: Opened 172.18.124.111 index=1
*Mar 1 01:22:41.715: TAC+: 172.18.124.111 (840307497) AUTHOR/START queued
*Mar 1 01:22:41.759: As1 IPCP: I CONFACK [REQsent] id 7 len 10
*Mar 1 01:22:41.763: As1 IPCP: Address 10.31.1.5 (0x03060A1F0105)
*Mar 1 01:22:41.915: TAC+: (840307497) AUTHOR/START processed
*Mar 1 01:22:41.923: TAC+: (840307497): received author response
status = FAIL
*Mar 1 01:22:41.927: TAC+: Closing TCP/IP 0x4EE23C connection to
172.18.124.111/49
*Mar 1 01:22:41.931: As1 AAA/AUTHOR (840307497): Post authorization
status = FAIL
*Mar 1 01:22:41.935: As1 AAA/AUTHOR/FSM: We cannot start CDPCP
*Mar 1 01:22:41.935: As1 CDPCP: State is Closed
01:22:42: %LINEPROTO-5-UPDOWN: Line protocol on Interface Async1,
```



changed state to up

```
*Mar 1 01:22:42.359: As1 PPP: Outbound cdp packet dropped,
CDPCP is Closed [starting negotiations]
*Mar 1 01:22:42.359: As1 CDPCP: State is Closed
*Mar 1 01:22:42.499: As1 PPP: Outbound cdp packet dropped,
CDPCP is Closed [starting negotiations]
*Mar 1 01:22:42.503: As1 CDPCP: State is Closed
*Mar 1 01:22:42.639: As1 PPP: Outbound cdp packet dropped,
CDPCP is Closed [starting negotiations]
*Mar 1 01:22:42.643: As1 CDPCP: State is Closed
*Mar 1 01:22:42.795: As1 PPP: Outbound cdp packet dropped,
CDPCP is Closed [starting negotiations]
*Mar 1 01:22:42.799: As1 CDPCP: State is Closed
*Mar 1 01:22:43.147: As1 CDPCP: TIMEout: State Closed
*Mar 1 01:22:43.151: As1 CDPCP: State is Listen
*Mar 1 01:22:43.155: As1 IPCP: I CONFREQ [ACKrcvd] id 5 len 40
*Mar 1 01:22:43.159: As1 IPCP: CompressType VJ 15 slots
CompressSlotID (0x0206002D0F01)
*Mar 1 01:22:43.163: As1 IPCP: Address 0.0.0.0 (0x030600000000)
*Mar 1 01:22:43.167: As1 IPCP: PrimaryDNS 0.0.0.0 (0x810600000000)
*Mar 1 01:22:43.171: As1 IPCP: PrimaryWINS 0.0.0.0 (0x820600000000)
*Mar 1 01:22:43.171: As1 IPCP: SecondaryDNS 0.0.0.0 (0x830600000000)
*Mar 1 01:22:43.175: As1 IPCP: SecondaryWINS 0.0.0.0 (0x840600000000)
*Mar 1 01:22:43.179: As1 AAA/AUTHOR/IPCP: Start. Her address 0.0.0.0,
we want 0.0.0.0
*Mar 1 01:22:43.183: As1 AAA/AUTHOR/IPCP: Processing AV service=ppp
*Mar 1 01:22:43.187: As1 AAA/AUTHOR/IPCP: Processing AV protocol=ip
!--- The NAS received the route statements and ACLs !--- from the ACS device. *Mar 1
01:22:43.187: As1 AAA/AUTHOR/IPCP: Processing AV route#1=
9.9.9.9 255.255.255.255 11.11.11.12
*Mar 1 01:22:43.191: As1 AAA/AUTHOR/IPCP: Processing AV route#2=
15.15.15.15 255.255.255.255 12.12.12.13
*Mar 1 01:22:43.195: As1 AAA/AUTHOR/IPCP: Processing AV route#3=
15.15.15.16 255.255.255.255 12.12.12.13
*Mar 1 01:22:43.199: As1 AAA/AUTHOR/IPCP: Processing AV inacl#1=
permit icmp 1.1.1.0 0.0.0.255 9.9.9.0 0.0.0.255
*Mar 1 01:22:43.199: As1 AAA/AUTHOR/IPCP: Processing AV inacl#2=
permit tcp 1.1.1.0 0.0.0.255 15.15.15.0 0.0.0.255
*Mar 1 01:22:43.203: As1 AAA/AUTHOR/IPCP: Authorization succeeded
*Mar 1 01:22:43.207: As1 AAA/AUTHOR/IPCP: Done. Her address 0.0.0.0,
we want 0.0.0.0
*Mar 1 01:22:43.211: As1 IPCP: Pool returned 1.1.1.1
*Mar 1 01:22:43.215: As1 IPCP: O CONFREQ [ACKrcvd] id 5 len 28
*Mar 1 01:22:43.219: As1 IPCP: CompressType VJ 15 slots
CompressSlotID (0x0206002D0F01)
*Mar 1 01:22:43.223: As1 IPCP: PrimaryWINS 0.0.0.0 (0x820600000000)
*Mar 1 01:22:43.227: As1 IPCP: SecondaryDNS 0.0.0.0 (0x830600000000)
*Mar 1 01:22:43.231: As1 IPCP: SecondaryWINS 0.0.0.0 (0x840600000000)
*Mar 1 01:22:43.339: As1 IPCP: I CONFREQ [ACKrcvd] id 6 len 16
*Mar 1 01:22:43.343: As1 IPCP: Address 0.0.0.0 (0x030600000000)
*Mar 1 01:22:43.347: As1 IPCP: PrimaryDNS 0.0.0.0 (0x810600000000)
*Mar 1 01:22:43.351: As1 AAA/AUTHOR/IPCP: Start. Her address 0.0.0.0,
we want 1.1.1.1
*Mar 1 01:22:43.355: As1 AAA/AUTHOR/IPCP: Processing AV service=ppp
*Mar 1 01:22:43.355: As1 AAA/AUTHOR/IPCP: Processing AV protocol=ip
!--- The NAS applies the route statements and ACLs. *Mar 1 01:22:43.359: As1 AAA/AUTHOR/IPCP:
Processing AV route#1=
9.9.9.9 255.255.255.255 11.11.11.12
*Mar 1 01:22:43.363: As1 AAA/AUTHOR/IPCP: Processing AV route#2=
15.15.15.15 255.255.255.255 12.12.12.13
*Mar 1 01:22:43.363: As1 AAA/AUTHOR/IPCP: Processing AV route#3=
15.15.15.16 255.255.255.255 12.12.12.13
*Mar 1 01:22:43.367: As1 AAA/AUTHOR/IPCP: Processing AV inacl#1=
permit icmp 1.1.1.0 0.0.0.255 9.9.9.0 0.0.0.255
```

```
*Mar 1 01:22:43.371: As1 AAA/AUTHOR/IPCP: Processing AV inacl#2=
permit tcp 1.1.1.0 0.0.0.255 15.15.15.0 0.0.0.255
*Mar 1 01:22:43.375: As1 AAA/AUTHOR/IPCP: Authorization succeeded
*Mar 1 01:22:43.375: As1 AAA/AUTHOR/IPCP: Done. Her address 0.0.0.0,
we want 1.1.1.1
*Mar 1 01:22:43.383: As1 IPCP: O CONFNAK [ACKrcvd] id 6 len 16
*Mar 1 01:22:43.387: As1 IPCP: Address 1.1.1.1 (0x030601010101)
*Mar 1 01:22:43.391: As1 IPCP: PrimaryDNS 172.18.125.3 (0x8106AC127D03)
*Mar 1 01:22:43.499: As1 IPCP: I CONFREQ [ACKrcvd] id 7 len 16
*Mar 1 01:22:43.503: As1 IPCP: Address 1.1.1.1 (0x030601010101)
*Mar 1 01:22:43.507: As1 IPCP: PrimaryDNS 172.18.125.3 (0x8106AC127D03)
*Mar 1 01:22:43.511: As1 AAA/AUTHOR/IPCP: Start. Her address 1.1.1.1,
we want 1.1.1.1
*Mar 1 01:22:43.519: As1 AAA/AUTHOR/IPCP (2646570182): Port='Async1'
list='' service=NET
*Mar 1 01:22:43.519: AAA/AUTHOR/IPCP: As1 (2646570182) user='chaprtr'
*Mar 1 01:22:43.523: As1 AAA/AUTHOR/IPCP (2646570182): send AV service=ppp
*Mar 1 01:22:43.523: As1 AAA/AUTHOR/IPCP (2646570182): send AV protocol=ip
*Mar 1 01:22:43.527: As1 AAA/AUTHOR/IPCP (2646570182): send AV addr*1.1.1.1
*Mar 1 01:22:43.531: As1 AAA/AUTHOR/IPCP (2646570182): found list "default"
*Mar 1 01:22:43.535: As1 AAA/AUTHOR/IPCP (2646570182): Method=tacacs+ (tacacs+)
*Mar 1 01:22:43.539: AAA/AUTHOR/TAC+: (2646570182): user=chaprtr
*Mar 1 01:22:43.539: AAA/AUTHOR/TAC+: (2646570182): send AV service=ppp
*Mar 1 01:22:43.543: AAA/AUTHOR/TAC+: (2646570182): send AV protocol=ip
*Mar 1 01:22:43.543: AAA/AUTHOR/TAC+: (2646570182): send AV addr*1.1.1.1
*Mar 1 01:22:43.547: TAC+: using previously set server 172.18.124.111 from
group tacacs+
*Mar 1 01:22:43.551: TAC+: Opening TCP/IP to 172.18.124.111/49 timeout=5
*Mar 1 01:22:43.563: TAC+: Opened TCP/IP handle 0x4EE23C to 172.18.124.111/49
*Mar 1 01:22:43.567: TAC+: Opened 172.18.124.111 index=1
*Mar 1 01:22:43.575: TAC+: 172.18.124.111 (2646570182) AUTHOR/START queued
*Mar 1 01:22:43.875: TAC+: (2646570182) AUTHOR/START processed
*Mar 1 01:22:43.887: TAC+: (2646570182): received author response
status = PASS_REPL
*Mar 1 01:22:43.891: TAC+: Closing TCP/IP 0x4EE23C connection to
172.18.124.111/49
*Mar 1 01:22:43.899: As1 AAA/AUTHOR (2646570182): Post authorization
status = PASS_REPL
*Mar 1 01:22:43.911: As1 AAA/AUTHOR/IPCP: Reject 1.1.1.1, using 1.1.1.1
*Mar 1 01:22:43.915: As1 AAA/AUTHOR/IPCP: Processing AV service=ppp
*Mar 1 01:22:43.919: As1 AAA/AUTHOR/IPCP: Processing AV protocol=ip
*Mar 1 01:22:43.923: As1 AAA/AUTHOR/IPCP: Processing AV route#1=
9.9.9.9 255.255.255.255 11.11.11.12
*Mar 1 01:22:43.923: As1 AAA/AUTHOR/IPCP: Processing AV route#2=
15.15.15.15 255.255.255.255 12.12.12.13
*Mar 1 01:22:43.927: As1 AAA/AUTHOR/IPCP: Processing AV route#3=
15.15.15.16 255.255.255.255 12.12.12.13
*Mar 1 01:22:43.931: As1 AAA/AUTHOR/IPCP: Processing AV inacl#1=
permit icmp 1.1.1.0 0.0.0.255 9.9.9.0 0.0.0.255
*Mar 1 01:22:43.935: As1 AAA/AUTHOR/IPCP: Processing AV inacl#2=
permit tcp 1.1.1.0 0.0.0.255 15.15.15.0 0.0.0.255
*Mar 1 01:22:43.939: As1 AAA/AUTHOR/IPCP: Processing AV addr*1.1.1.1
*Mar 1 01:22:43.939: As1 AAA/AUTHOR/IPCP: Authorization succeeded
*Mar 1 01:22:43.943: As1 AAA/AUTHOR/IPCP: Done. Her address 1.1.1.1,
we want 1.1.1.1
*Mar 1 01:22:43.947: As1 IPCP: O CONFACK [ACKrcvd] id 7 len 16
*Mar 1 01:22:43.951: As1 IPCP: Address 1.1.1.1 (0x030601010101)
*Mar 1 01:22:43.955: As1 IPCP: PrimaryDNS 172.18.125.3
(0x8106AC127D03)
*Mar 1 01:22:43.959: As1 IPCP: State is Open
*Mar 1 01:22:44.483: As1 IPCP: Install route to 1.1.1.1
koala#
koala#
```

## Verifica

Attualmente non è disponibile una procedura di verifica per questa configurazione.

## Risoluzione dei problemi

Le informazioni contenute in questa sezione permettono di risolvere i problemi relativi alla configurazione.

### Comandi per la risoluzione dei problemi

Lo [strumento Output Interpreter](#) (solo utenti [registrati](#)) (OIT) supporta alcuni comandi **show**. Usare l'OIT per visualizzare un'analisi dell'output del comando **show**.

**Nota:** consultare le [informazioni importanti sui comandi di debug](#) prima di usare i comandi di **debug**.

- **debug aaa authentication:** visualizza le informazioni sull'autenticazione AAA/TACACS+.
- **debug aaa authorization:** visualizza le informazioni sull'autorizzazione AAA/TACACS+.
- **debug aaa per utente:** visualizza le informazioni sulle impostazioni di configurazione per utente sul router o sui server di accesso inviati da un server AAA.
- **debug tacacs+:** visualizza informazioni di debug dettagliate associate a TACACS+.
- **debug ppp negotiation:** visualizza i pacchetti PPP trasmessi durante l'avvio del protocollo PPP, in cui le opzioni PPP vengono negoziate.

Per informazioni sulla risoluzione dei problemi, consultare il documento sulla [risoluzione dei problemi relativi agli elenchi degli accessi sulle interfacce di composizione](#).

## Informazioni correlate

- [Cisco Secure Access Control Server per UNIX](#)
- [Cisco Secure Access Control Server per Windows](#)