

Configurazione di un server di accesso con PRI per le chiamate Multilink Async e ISDN in arrivo

Sommario

[Introduzione](#)

[Prerequisiti](#)

[Requisiti](#)

[Componenti usati](#)

[Prodotti correlati](#)

[Convenzioni](#)

[Configurazione](#)

[Esempio di rete](#)

[Configurazioni](#)

[Verifica](#)

[Output di esempio](#)

[Risoluzione dei problemi](#)

[Risorse per la risoluzione dei problemi](#)

[Comandi per la risoluzione dei problemi](#)

[Output di esempio del comando debug](#)

[Informazioni correlate](#)

[Introduzione](#)

In molti ambienti è necessario configurare un server di accesso in grado di accettare chiamate in arrivo da utenti sia Async che ISDN. Questi utenti possono quindi connettersi alla rete senza problemi come se fossero fisicamente presenti. Tale configurazione viene in genere utilizzata per fornire connettività di rete agli utenti che viaggiano e sono telelavoratori, nonché per i siti di piccole aziende (SOHO, Small Office-Home Office).

In questo documento viene descritto come configurare un server di accesso in modo che accetti chiamate Async e ISDN in arrivo sui circuiti PRI ISDN T1. La configurazione fornisce la configurazione minima necessaria al server di accesso alla rete (NAS) per accettare la chiamata. È possibile aggiungere ulteriori funzionalità alla configurazione in base alle proprie esigenze.

[Prerequisiti](#)

[Requisiti](#)

Nessun requisito specifico previsto per questo documento.

[Componenti usati](#)

Le informazioni fornite in questo documento si basano sulle seguenti versioni software e hardware:

- Cisco AS5300 con 192 modem MICA e otto porte T1 con software Cisco IOS® versione 12.2(5).
- Due PRI T1.
- Un PC con Microsoft Windows. Il PC è dotato di modem analogico e di connessione telefonica alla rete telefonica pubblica con interruttore. Il PC compone il T1 PRI collegato all'AS5300.
- Cisco serie 800 e 1600 router con circuiti ISDN BRI. Questi router sono i client di chiamata ISDN. Viene fornita la configurazione per Cisco 1600. È possibile applicare questa configurazione client a qualsiasi router con interfaccia BRI.
- Autenticazione, autorizzazione e accounting locali (AAA). Se si dispone di un server AAA Radius o Tacacs+, è possibile utilizzarli per fornire il server AAA per le chiamate in arrivo.

Nota: la configurazione del router Cisco 800 è simile a quella del router Cisco 1600 e non è inclusa in questo documento.

Le informazioni discusse in questo documento fanno riferimento a dispositivi usati in uno specifico ambiente di emulazione. Su tutti i dispositivi menzionati nel documento la configurazione è stata ripristinata ai valori predefiniti. Se la rete è operativa, valutare attentamente eventuali conseguenze derivanti dall'uso dei comandi.

[Prodotti correlati](#)

È possibile utilizzare questa configurazione con qualsiasi router dotato di schede T1 o PRI e modem digitali interni (ad esempio, MICA, NextPort o Microcom). Qualsiasi router serie AS5xxx con scheda T1 o PRI e modem digitali può utilizzare i concetti di questa configurazione.

I router Cisco serie 2600 non supportano modem digitali interni. È possibile configurare i router Cisco serie 2600 in modo che accettino solo chiamate ISDN, a condizione che il router abbia un T1 o PRI WIC o un modulo di rete.

I router Cisco serie 3600 possono supportare sia le chiamate ISDN che le chiamate modem. Tuttavia, i router Cisco serie 3600 richiedono un T1 o PRI WIC o un modulo di rete e il modulo di rete modem digitale NM-xDM.

È inoltre possibile apportare modifiche per utilizzare questa configurazione con le porte E1 o PRI. Configurare il controller E1 con la codifica lineare, il framing e altre caratteristiche fisiche fornite dalla Telco. La configurazione del canale D (interfaccia Serial x:15 per E1) è simile a quella mostrata in questo documento.

[Convenzioni](#)

Per ulteriori informazioni sulle convenzioni usate, consultare il documento [Cisco sulle convenzioni nei suggerimenti tecnici](#).

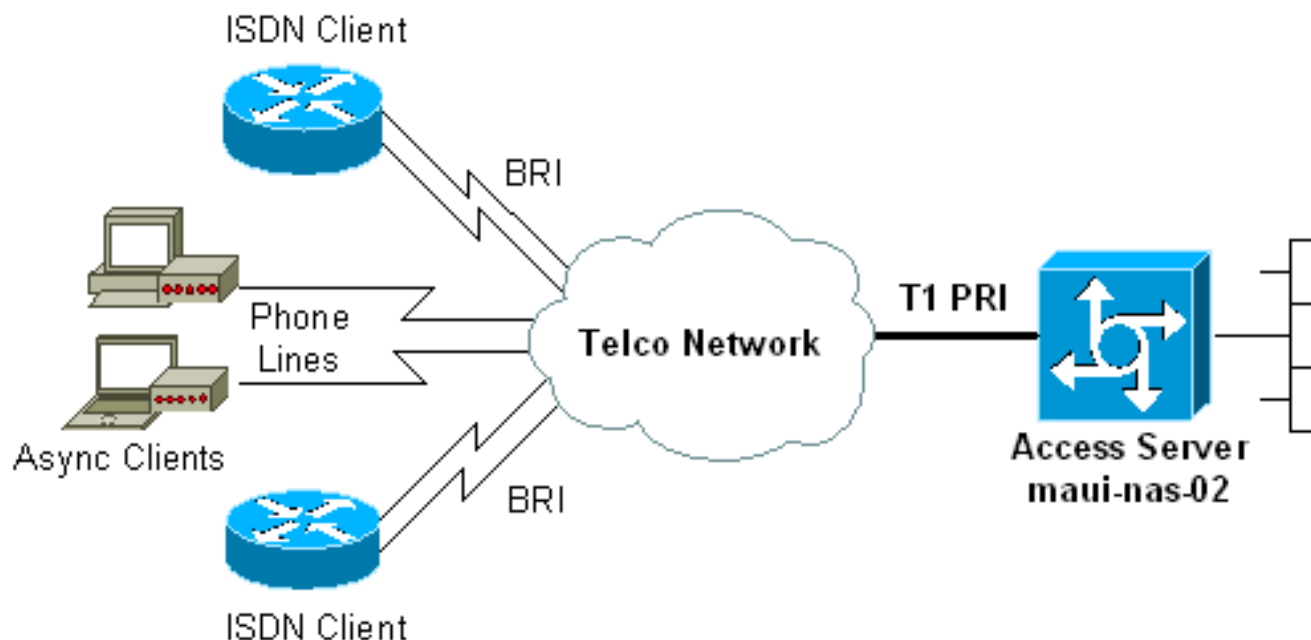
[Configurazione](#)

In questa sezione vengono presentate le informazioni necessarie per configurare le funzionalità descritte più avanti nel documento.

Nota: per ulteriori informazioni sui comandi menzionati in questo documento, usare lo [strumento di ricerca dei comandi](#) (solo utenti [registrati](#)).

Esempio di rete

Nel documento viene usata questa impostazione di rete:



Configurazioni

Nel documento vengono usate queste configurazioni:

- [maui-nas-02 \(5300\)](#)
- [maui-soho-01 \(1600\)](#)

maui-nas-02 (5300)

```
maui-nas-02#show running-config
Building configuration...

Current configuration : 3671 bytes
!
! No configuration change since last restart
!
version 12.2
service timestamps debug datetime msec
service timestamps log datetime msec
service password-encryption
!
hostname maui-nas-02
!
boot system flash:c5300-i-mz.122-5.bin
aaa new-model
aaa authentication login default local
aaa authentication login NO_AUTHEN none
aaa authentication ppp default local
aaa authorization network default local
```

```

!--- PPP authentication and network authorization are
local. !--- Replace local with radius or tacacs if you
use an AAA server.

enable secret 5 <deleted>
!
username admin password 7 <deleted>
username async_user password 7 <deleted>
username travis_isdn password 7 <deleted>
username austin_isdn password 7 <deleted>
!--- Usernames for local authentication of the call.
!--- The client presents the username/password and the
NAS !--- authenticates the peer. spe 1/0 1/8 firmware
location mica-modem-pw.2.7.3.0.bin spe 2/0 2/7 firmware
location mica-modem-pw.2.7.3.0.bin ! ip subnet-zero ip
domain-name maui-onions.com !--- Tells the NAS how to
qualify DNS lookups. !--- In this example, maui-
onions.com is appended to the end of each !--- looked-up
name. ip name-server 172.22.53.210 !--- Specifies the
primary name server. ! async-bootp dns-server
172.22.53.210 !--- Specifies (for async clients) the IP
address of domain name servers. isdn switch-type
primary-ni !--- Switch-type for this NAS. Obtain this
information from the Telco. ! controller T1 0 !--- First
T1 PRI framing esf !--- Framing for this T1 is Extended
Super Frame (ESF). !--- Obtain this information from the
Telco. clock source line primary !--- T1 0 is the
primary clock source for this NAS. !--- Clock source
must be specified for the timing and synchronization !--
- of the T1 carrier. linecode b8zs !--- Linecoding for
this T1. Obtain this information from the Telco. pri-
group timeslots 1-24 !--- For T1 PRI scenarios, all 24
T1 timeslots are assigned as !--- ISDN PRI channels. The
router now automatically creates the !--- corresponding
D-channel: interface Serial 0:23.

!
controller T1 1
!--- Second T1 PRI. framing esf !--- Framing for this
T1 is Extended Super Frame (ESF). !--- Obtain this
information from the Telco. clock source line secondary
1 !--- T1 1 is the first secondary clock source for this
NAS. !--- If the primary clock fails, this secondary
clock takes over. linecode b8zs !--- Linecoding for this
T1. Obtain this information from the Telco. pri-group
timeslots 1-24 !--- For T1 PRI scenarios, all 24 T1
timeslots are assigned as ISDN !--- PRI channels. The
router now automatically creates the !--- corresponding
D-channel: interface Serial 1:23.

!
controller T1 2
!--- This T1 is unused. framing sf clock source line
secondary 2 linecode ami ! !--- Unused interface
configuration is omitted here. ! interface Loopback0 ip
address 172.22.60.1 255.255.255.0 !--- The IP pool for
async users is in this subnet. !--- The routes for all
async clients are summarized and !--- propagated to the
backbone instead of 254 routes. ! interface Loopback1 ip
address 172.22.61.1 255.255.255.0 !--- The IP pool for
ISDN users is in this subnet. !--- The routes for all
ISDN clients are summarized and !--- propagated to the
backbone instead of 254 routes. ! interface Ethernet0 ip
address 172.22.53.140 255.255.255.0 ! !--- Unused

```

```
interface configuration is omitted here. ! interface
Serial0:23 !--- D-channel configuration for T1 0. no ip
address encapsulation ppp !--- PPP encapsulation on this
interface. dialer rotary-group 10 !--- T1 0 is a member
of rotary group 10. !--- The rotary group configuration
is in interface Dialer 10. isdn switch-type primary-ni
isdn incoming-voice modem !--- All incoming voice calls
on this T1 are sent to the modems. !--- This command is
required if this T1 is to accept async calls. no cdp
enable ppp authentication chap ppp multilink ! interface
Serial1:23 !--- D-channel configuration for T1 1. no ip
address encapsulation ppp !--- PPP encapsulation on this
interface. dialer rotary-group 10 !--- T1 1 is a member
of rotary group 10. !--- The rotary group configuration
is in interface Dialer 10. isdn switch-type primary-ni
isdn incoming-voice modem !--- All incoming voice calls
on this T1 are sent to the modems. !--- This command is
required if this T1 is to accept async calls. no cdp
enable ppp authentication chap ppp multilink ! interface
Group-Async0 !--- This group-async interface is the
configuration template for all modems. !--- You need not
configure individual async interfaces because you can !-
-- clone the interfaces from one managed copy. ip
unnumbered Loopback0 !--- A Loopback interface is always
up/up. So, unnumber the loopback interface !--- for
stability. encapsulation ppp dialer in-band dialer idle-
timeout 900 dialer-group 5 !--- Interesting traffic is
defined in dialer-list 5. !--- Note: The specified
dialer-group number must be the same as the !--- dialer-
list number. In this example, the number is defined as
"5".
```

```
async mode interactive
```

```
!--- Users can dial in and get to a shell or PPP
session on that line. !--- You can use this command in
conjunction with autoselect ppp !--- under the line
configuration to automatically detect the connection
type.
```

```
peer default ip address pool ASYNC
!--- Clients are assigned addresses from the IP address
pool named ASYNC. no fair-queue ppp authentication chap
!--- Use CHAP authentication. ppp multilink group-range
1 192 !--- Modems 1 through 192 are members of this
group async interface. ! interface Dialer10 !---
Configuration for rotary group 10. !--- The Dialer
interface number (10) must exactly match rotary !---
group number configured on the physical interfaces. ip
unnumbered Loopback1 !--- A Loopback interface is always
up/up. So, unnumber the loopback interface !--- for
stability. encapsulation ppp dialer in-band !--- Enable
V.25bis on this interface. dialer idle-timeout 900 !---
Idle timeout for incoming calls is 900 seconds (15
mins). dialer-group 5 !--- Apply interesting traffic
definition from dialer-list 5. !--- Note: The specified
dialer-group number must be the same !--- as the dialer-
list number. !--- In this example, the number is defined
as "5".
```

```
peer default ip address pool ISDN
!--- Clients are assigned addresses from the IP
address pool named ISDN. ppp authentication chap ppp
multilink ! router eigrp 69 network 172.22.0.0 auto-
summary no eigrp log-neighbor-changes ! ip local pool
```

```
ASYNC 172.22.60.2 172.22.60.254 ip local pool ISDN
172.22.61.2 172.22.61.254 !--- IP address pools for
dialin clients. ip classless no ip http server ! access-
list 101 remark Interesting Traffic Definition to be
used in dialer-list 5 access-list 101 deny eigrp any any
access-list 101 permit ip any any dialer-list 5 protocol
ip list 101 !--- Access-list 101 defines interesting
traffic. This definition is applied !--- to interface
Dialer 10 and Group-Async 0 through dialer-group 5. !---
Note: The specified dialer-list number must be the same
as the !--- dialer-group number. In this example, the
number is defined as "5".
```

```
!
line con 0
  exec-timeout 0 0
  login authentication NO_AUTHEN
  !--- Apply AAA list NO_AUTHEN configured previously.
!--- That list has method "none". !--- There is no
authentication on the console port. line 1 192 modem
InOut !--- Support incoming and outgoing modem calls.
transport input all autoselect during-login ! ---
Displays the username:password prompt after modems
connect. autoselect ppp !--- Automatically launches PPP
if the router detects incoming PPP packets. !--- Without
this command the dialin client must manually !--- launch
PPP (from Exec mode). line aux 0 line vty 0 4 ! ntp
clock-period 17180107 ntp server 172.22.53.1 end
```

maui-soho-01 (1600)

```
maui-soho-01#show running-config
Building configuration...

Current configuration : 1609 bytes
!
version 12.1
no service single-slot-reload-enable
service timestamps debug datetime msec
service timestamps log datetime msec
service password-encryption
!
hostname maui-soho-01
!
logging rate-limit console 10 except errors
!
username admin password 7 <deleted>
ip subnet-zero
no ip finger
!
isdn switch-type basic-ni
  !--- Switch-type for the BRI circuit. Obtain this
information from the Telco. ! interface Ethernet0 ip
address 10.0.0.1 255.255.255.0 no keepalive ! interface
Serial0 no ip address shutdown ! interface BRI0 !--- BRI
physical interface configuration. no ip address !--- An
IP address is not required on the physical BRI interface
because !--- this is a dialer pool. !--- The IP
addressing functionality is in interface Dialer 1
(dialer pool). encapsulation ppp dialer pool-member 1 !--
-- Places the interface into dialer pool 1 from which
Dialer interfaces !--- can draw channels as needed. !---
Links the physical interface with the logical dialer
```

```
interfaces. !--- Dialer Pool 1 is defined in interface
Dialer 1. isdn switch-type basic-ni isdn spid1
51255511110101 5551111 isdn spid2 51255511120101 5551112
!--- Service Profile IDentifiers (SPIDs) are found
primarily in North America. !--- SPIDs are not required
for certain switch types. Confirm with your Telco. !---
If the Telco informs you that you do not need SPIDs, do
not use these !--- two SPID commands. ppp authentication
chap callin !--- Perform one way CHAP authentication.
ppp multilink !--- Permit multilink on this BRI
interface. ! interface Dialer1 !--- This dialer is the
logical interface for the dialer pool. ip address
negotiated !--- IP address for this interface is
obtained from the NAS during !--- IPCP negotiation.
Alternatively, you can also unnumber this interface !---
to a working interface (example, ethernet 0).
encapsulation ppp dialer pool 1 !--- Defines Dialer pool
1. !--- BRI 0 is a member of this pool. dialer idle-
timeout 900 !--- Idle-timout for this link is 900
seconds (15 minutes). !--- The link is disconnected if
there is no interesting traffic for 900 secs. dialer
string 81560 class 56k !--- Dial 81560 and use the map-
class named "56k". dialer load-threshold 1 outbound !---
Sets the outbound load level for traffic at which !---
additional connections are added to the MP bundle load
level. !--- Values range from 1 (unloaded) to 255 (fully
loaded). !--- With a threshold of 1, the additional
links are immediately !--- brought up and added to the
bundle. dialer-group 1 !--- Apply interesting traffic
definition from dialer-list 1. ppp authentication chap
callin !--- Use one way PPP CHAP authentication. ppp
chap hostname austin_isdn !--- Use the CHAP username
austin_isdn to authenticate to the other router. ppp
chap password 7 <deleted> !--- Use this CHAP password to
authenticate to the other router. ppp multilink !---
Allow multilink for the dialer profile. !--- Without
this command multilink is NOT negotiated. ! ! ip
classless ip route 0.0.0.0 0.0.0.0 Dialer1 !--- Set the
default route to be interface Dialer 1 (the dialer
pool). !--- Traffic sent to int Dialer1 causes the
dialer pool member (int BRI 0) !--- to be dialed. no ip
http server ! ! map-class dialer 56k !--- Map-class
named "56k" that you used with the dialer string in int
Dialer1. dialer isdn speed 56 !--- Set the speed of the
call to be 56k (the default speed is 64k). !--- This
setting is optional for your connection. !--- Consult
your Telco to find out if you need to configure the dial
!--- speed to 56k. access-list 101 remark Interesting
traffic for dialer-list 1 access-list 101 deny udp any
any eq ntp access-list 101 permit ip any any !--- Define
NTP traffic as NOT interesting to prevent periodic NTP
traffic !--- from keeping the link up indefinitely. !---
All other IP traffic is interesting. !--- Change this
depending on your traffic needs. dialer-list 1 protocol
ip list 101 !--- Access-list 101 defines interesting
traffic. !--- Apply this to interface Dialer 1 through
the command dialer-group 1. !--- Note: The specified
dialer-list number must be the same as the !--- dialer-
group number. In this example, the number is defined as
"1"

!
line con 0
transport input none
```

```
line vty 0 4
 login
!
ntp clock-period 17042429
ntp server 172.22.53.1
end
```

Verifica

Le informazioni contenute in questa sezione permettono di verificare che la configurazione funzioni correttamente.

Alcuni comandi **show** sono supportati dallo [strumento Output Interpreter \(solo utenti registrati\)](#); lo strumento permette di visualizzare un'analisi dell'output del comando **show**.

- **show isdn status**: assicura che il router comunichi correttamente con lo switch ISDN. Nell'output, verificate che lo stato del livello 1 sia `ACTIVE` e che venga visualizzato lo stato del livello 2 = `MULTIPLE_FRAME_DEFINED`. Questo comando visualizza anche il numero di chiamate attive. Per ulteriori informazioni, fare riferimento a [Uso del comando show isdn status per la risoluzione dei problemi BRI](#).
- **show ppp multilink**: visualizza le informazioni sui fasci di connessione multipla attivi. Utilizzare questo comando per verificare la connessione multipla.
- **show dialer [interface *type number*]**: visualizza informazioni di diagnostica generali per le interfacce configurate per il DDR. Se la connessione telefonica viene visualizzata correttamente, è necessario che venga visualizzato il messaggio `Stato connessione dati`. Se appare il livello fisico verso l'alto, l'implicazione è che il protocollo di linea è comparso, ma il Network Control Protocol (NCP) non lo ha fatto. Gli indirizzi di origine e di destinazione del pacchetto da cui è stata avviata la composizione sono visualizzati nella riga `Motivo composizione`. Questo comando **show** visualizza anche la configurazione del timer e il tempo che deve trascorrere prima del timeout della connessione.
- **show caller user *username detail***: visualizza i parametri per l'utente specifico, ad esempio l'indirizzo IP assegnato e i parametri del bundle PPP e PPP. Se la versione in uso del software Cisco IOS non supporta questo comando, usare il comando **show user**.
- **show dialer map**: visualizza le mappe dialer dinamiche e statiche configurate. È possibile utilizzare questo comando per verificare se è stata creata una mappa dialer dinamica. Impossibile instradare pacchetti senza una mappa dialer.

Output di esempio

Di seguito sono riportati alcuni output del comando **show** per le chiamate riuscite. Fare attenzione alle sezioni in grassetto e ai commenti forniti nell'output. Confrontare l'output ottenuto con i risultati mostrati di seguito.

Vista generale

```
maui-nas-02#show users
Line      User      Host(s)      Idle      Location
* 0 con 0      idle      00:00:00
  97 tty 97    async_user Async interface 00:06:36  PPP: 172.22.60.2
```



```

!--- Async User. The IP address of the peer is indicated. Interface User Mode Idle Peer Address
Vi1      austin_isd Virtual PPP (Bundle) 00:03:35 172.22.61.2
  Vi2      travis_isd Virtual PPP (Bundle) 00:00:20 172.22.61.3
!--- Virtual-Access Interface for the two multilink PPP users. Se0:1      austin_isd Sync PPP
- Bundle: Vi1
  Se0:2      austin_isd Sync PPP          - Bundle: Vi1
!--- User austin_isdn is connected through two B-channels(Multilink PPP). !--- Interface
Virtual-Access 1 (Vi1) controls the two B-channels. Se0:3      travis_isd Sync PPP
- Bundle: Vi2
  Se0:4      travis_isd Sync PPP          - Bundle: Vi2
!--- User travis_isdn is connected through two B-channels (Multilink PPP). !--- Interface
Virtual-Access 2 (Vi2) controls the two B-channels. maui-nas-02#show dialer map
!--- Observe the Dynamic Dialer Maps created for each dialin client. Dynamic dialer map ip
172.22.60.2 name async_user () on As97 Dynamic dialer map ip 172.22.61.2 name austin_isdn () on
Di10 Dynamic dialer map ip 172.22.61.3 name travis_isdn () on Di10

```

maui-nas-02#show users

| Line | User | Host(s) | Idle | Location |
|-----------|------------|-----------------|----------|------------------|
| * 0 con 0 | | idle | 00:00:00 | |
| 97 tty 97 | async_user | Async interface | 00:06:36 | PPP: 172.22.60.2 |

```

!--- Async User. The IP address of the peer is indicated. Interface User Mode Idle Peer Address
Vi1      austin_isd Virtual PPP (Bundle) 00:03:35 172.22.61.2
  Vi2      travis_isd Virtual PPP (Bundle) 00:00:20 172.22.61.3
!--- Virtual-Access Interface for the two multilink PPP users. Se0:1      austin_isd Sync PPP
- Bundle: Vi1
  Se0:2      austin_isd Sync PPP          - Bundle: Vi1
!--- User austin_isdn is connected through two B-channels(Multilink PPP). !--- Interface
Virtual-Access 1 (Vi1) controls the two B-channels. Se0:3      travis_isd Sync PPP
- Bundle: Vi2
  Se0:4      travis_isd Sync PPP          - Bundle: Vi2

```

```

!--- User travis_isdn is connected through two B-channels (Multilink PPP). !--- Interface
Virtual-Access 2 (Vi2) controls the two B-channels. maui-nas-02#show dialer map
!--- Observe the Dynamic Dialer Maps created for each dialin client. Dynamic dialer map ip
172.22.60.2 name async_user () on As97 Dynamic dialer map ip 172.22.61.2 name austin_isdn () on
Di10 Dynamic dialer map ip 172.22.61.3 name travis_isdn () on Di10

```

maui-nas-02#show users

| Line | User | Host(s) | Idle | Location |
|-----------|------------|-----------------|----------|------------------|
| * 0 con 0 | | idle | 00:00:00 | |
| 97 tty 97 | async_user | Async interface | 00:06:36 | PPP: 172.22.60.2 |

```

!--- Async User. The IP address of the peer is indicated. Interface User Mode Idle Peer Address
Vi1      austin_isd Virtual PPP (Bundle) 00:03:35 172.22.61.2
  Vi2      travis_isd Virtual PPP (Bundle) 00:00:20 172.22.61.3
!--- Virtual-Access Interface for the two multilink PPP users. Se0:1      austin_isd Sync
PPP
- Bundle: Vi1
  Se0:2      austin_isd Sync PPP          - Bundle: Vi1
!--- User austin_isdn is connected through two B-channels(Multilink PPP). !--- Interface
Virtual-Access 1 (Vi1) controls the two B-channels. Se0:3      travis_isd Sync PPP
- Bundle: Vi2
  Se0:4      travis_isd Sync PPP          - Bundle: Vi2
!--- User travis_isdn is connected through two B-channels (Multilink PPP). !--- Interface
Virtual-Access 2 (Vi2) controls the two B-channels. maui-nas-02#show dialer map
!--- Observe the Dynamic Dialer Maps created for each dialin client. Dynamic dialer map ip
172.22.60.2 name async_user () on As97 Dynamic dialer map ip 172.22.61.2 name austin_isdn () on
Di10 Dynamic dialer map ip 172.22.61.3 name travis_isdn () on Di10

```

Per una chiamata analogica

maui-nas-02#show caller user async_user detail

User: async_user, line tty 97, service Async

```

!--- Shows hardware-level settings for the user named async_user. Active time 00:00:34,
Idle time 00:00:16 Timeouts: Absolute Idle Idle Session Exec Limits: - - 00:10:00 Disconnect in:
- - - TTY: Line 97, running PPP on As97
!--- The call is terminated on interface Async 97. !--- This interface is included in the
Group-Async configuration. Location: PPP: 172.22.60.2
!--- IP address for the peer. This address is obtained from the IP pool "ASYNC". DS0:
(slot/unit/channel)=0/0/2
!--- T1 channel on which the call arrived. !--- The call arrived on channel 0 in T1 0.
Line: Baud rate (TX/RX) is 115200/115200, no parity, 1 stopbits, 8 databits Status: Ready,
Active, No Exit Banner, Async Interface Active HW PPP Support Active Capabilities: Hardware
Flowcontrol In, Hardware Flowcontrol Out Modem Callout, Modem RI is CD, Line usable as async
interface, Integrated Modem Modem State: Ready User: async_user, line As97, service PPP
!--- PPP setting for the user named async_user. !--- Notice that the call is terminated on
int Async97. Active time 00:00:32, Idle time 00:00:30 Timeouts: Absolute Idle Limits: - 00:15:00
Disconnect in: - 00:14:28 PPP: LCP Open, multilink Closed, CHAP (<- AAA), IPCP
!--- LCP state is OPEN. If LCP state is not OPEN, !--- use debug ppp negotiation to
isolate LCP issues.

LCP: -> peer, ACCM, AuthProto, MagicNumber, PCompression, ACCompression
      <- peer, ACCM, MagicNumber, PCompression, ACCompression
NCP: Open IPCP
!--- IPCP state is open. If IPCP state is not OPEN, !--- use debug ppp negotiation to
isolate IPCP issues.

IPCP: <- peer, Address
      -> peer, Address
Dialer: Connected, inbound
        Idle timer 900 secs, idle 31 secs
        Type is IN-BAND ASYNC, group As97
IP: Local 172.22.60.1, remote 172.22.60.2
!--- NAS IP address and the IP address assigned to the peer. Counts: 27 packets input, 1545
bytes, 0 no buffer
        1 input errors, 1 CRC, 0 frame, 0 overrun
        14 packets output, 347 bytes, 0 underruns
        0 output errors, 0 collisions, 0 interface resets
!--- Packets pass through the connection.

```

Per una chiamata ISDN

```

maui-nas-02#show caller user austin_isdn detail
!--- The user named austin_isdn has two PPP links, !--- and one virtual interface bundle.
User: austin_isdn, line Se0:3, service PPP
!--- Shows PPP layer settings for the first channel !--- that belongs to the user named
austin_isdn. Active time 00:04:01, Idle time 00:00:00 Timeouts: Absolute Idle Limits: - -
Disconnect in: - - PPP: LCP Open, multilink Open, CHAP (<- AAA)
!--- LCP state is OPEN. If LCP state is not OPEN, !--- use debug ppp negotiation to
isolate LCP issues.

LCP: -> peer, AuthProto, MagicNumber, MRRU, EndpointDisc
      <- peer, MagicNumber, MRRU, EndpointDisc
Dialer: Connected, inbound
        Type is ISDN, group Di10
!--- Incoming call used rotary group of int Dialer 10. IP: Local 172.22.61.1
!--- IP address of the int Loopback 1. !--- Remember that int Dialer 1 was unnumbered to
Loop 1. !--- The remote IP address is indicated under the virtual-interface. Bundle: Member of
austin_isdn, last input 00:00:00 Counts: 55 packets input, 1635 bytes, 0 no buffer 0 input
errors, 0 CRC, 0 frame, 0 overrun 82 packets output, 3479 bytes, 0 underruns 0 output errors, 0
collisions, 0 interface resets User: austin_isdn, line Se0:4, service PPP
!--- Shows PPP layer settings for the second channel !--- that belongs to the user named
austin_isdn. Active time 00:03:59, Idle time 00:00:00 Timeouts: Absolute Idle Limits: - -
Disconnect in: - - PPP: LCP Open, multilink Open, CHAP (<- AAA) LCP: -> peer, AuthProto,
MagicNumber, MRRU, EndpointDisc <- peer, MagicNumber, MRRU, EndpointDisc Dialer: Connected to ,
inbound Type is ISDN, group Di10 IP: Local 172.22.61.1 Bundle: Member of austin_isdn, last input

```

```
00:00:00 Counts: 50 packets input, 1589 bytes, 0 no buffer 0 input errors, 0 CRC, 0 frame, 0
overrun 77 packets output, 3429 bytes, 0 underruns 0 output errors, 0 collisions, 0 interface
resets User: austin_isdn, line Vi1, service PPP Bundle
    !--- Shows Virtual-Access Interface Bundle that controls the connections. Active time
00:04:02, Idle time 00:04:01 Timeouts: Absolute Idle Limits: - 00:15:00 Disconnect in: -
00:10:58 PPP: LCP Open, multilink Open, IPCP, CDPCP LCP: -> peer, MagicNumber, MRRU,
EndpointDisc <- peer NCP: Open IPCP, CDPCP
    !--- IPCP State is open. If IPCP state is not OPEN, !--- use debug ppp negotiation to
isolate IPCP issues.
```

```
IPCP: <- peer, Address
      -> peer, Address
Dialer: Connected, inbound
        Idle timer 900 secs, idle 1 secs
        Type is IN-BAND SYNC, group Di10
IP: Local 172.22.61.1, remote 172.22.61.2
```

```
!--- Dialer interface (Local) IP address !--- and the IP address assigned to the peer.
```

```
Bundle: First link of austin_isdn, 2 links, last input 00:00:01 Counts: 12 packets input, 1712
bytes, 0 no buffer 0 input errors, 0 CRC, 0 frame, 0 overrun 67 packets output, 5030 bytes, 0
underruns 0 output errors, 0 collisions, 0 interface resets
```

Risoluzione dei problemi

Le informazioni contenute in questa sezione permettono di risolvere i problemi relativi alla configurazione.

Risorse per la risoluzione dei problemi

Utilizzare le seguenti risorse come richiesto:

- [Risoluzione dei problemi relativi alle chiamate modem in ingresso](#): utilizzare questo documento per risolvere i problemi relativi alle chiamate analogiche non riuscite.
- [PRI Async Modem Callin](#): utilizzare questo documento per ulteriori informazioni sulla risoluzione dei problemi relativi alle chiamate analogiche non riuscite.
- [Risoluzione dei problemi relativi alle chiamate ISDN in arrivo](#): utilizzare questo documento per risolvere i problemi relativi alle chiamate ISDN non riuscite.
- [PRI ISDN Callin](#): utilizzare questo documento per ulteriori informazioni sulla risoluzione dei problemi relativi alle chiamate ISDN non riuscite.
- [Diagramma di flusso per la risoluzione dei problemi T1](#) - Utilizzare questo diagramma di flusso se si sospetta che il circuito T1 non funzioni correttamente.
- [Test di loopback per linee T1/56K](#): utilizzare questo documento per verificare che la porta T1 sul router funzioni correttamente.

Comandi per la risoluzione dei problemi

Alcuni comandi **show** sono supportati dallo [strumento Output Interpreter \(solo utenti registrati\)](#); lo strumento permette di visualizzare un'analisi dell'output del comando **show**.

Nota: prima di usare i comandi di **debug**, consultare le [informazioni importanti sui comandi di debug](#).

- **debug dialer**: visualizza le informazioni di debug DDR sui pacchetti ricevuti su un'interfaccia dialer. Queste informazioni possono contribuire a verificare la presenza di traffico interessante che utilizza l'interfaccia di composizione.

- **debug isdn q931**: visualizza la configurazione delle chiamate e la disattivazione della connessione di rete ISDN (livello 3).
- **debug modem**: visualizza l'attività della linea del modem su un server di accesso. L'output viene visualizzato quando lo stato della linea del modem cambia.
- **debug modem csm**: consente di risolvere i problemi relativi al modulo CSM (Call Switching Module) sui router con modem digitali interni. Con questo comando è possibile tracciare la sequenza completa delle chiamate in entrata e in uscita.
- **debug ppp negotiation**: visualizza le informazioni sul traffico e gli scambi PPP e negozia il protocollo LCP (Link Control Protocol), l'autenticazione e il protocollo NCP (Network Control Protocol). Una negoziazione PPP riuscita apre innanzitutto lo stato LCP, quindi autentica e infine negozia NCP. Durante la negoziazione LCP vengono stabiliti parametri di connessione multipla, ad esempio Unità massima di ricezione ricostruita (MRRU).
- **debug ppp authentication**: visualizza i messaggi del protocollo di autenticazione PPP, inclusi gli scambi di pacchetti CHAP e gli scambi del protocollo PAP (Password Authentication Protocol).
- **debug ppp error**: visualizza gli errori di protocollo e le statistiche sugli errori associate alla negoziazione e al funzionamento della connessione PPP.

Output di esempio del comando debug

Di seguito sono riportati alcuni output del comando **debug** per le chiamate riuscite. Fare attenzione alle sezioni in grassetto e ai commenti forniti negli output. Confrontare l'output ottenuto con il risultato mostrato di seguito.

Per una chiamata analogica

```
maui-nas-02#debug isdn q931
  ISDN Q931 packets debugging is on
maui-nas-02#debug modem
  Modem control/process activation debugging is on
maui-nas-02#debug modem csm
  Modem Management Call Switching Module debugging is on
maui-nas-02#debug ppp negotiation
  PPP protocol negotiation debugging is on
maui-nas-02#debug ppp authentication
  PPP authentication debugging is on

maui-nas-02#
Sep 28 13:13:28.369: ISDN Se0:23: RX <-  SETUP pd = 8  callref = 0x5285

  !--- Incoming Q.931 SETUP message. This indicates an incoming call. !--- For more
  information on Q.931 refer to !--- Troubleshooting ISDN BRI Layer 3 using the debug isdn q931
  Command.

Sep 28 13:13:28.369:  Bearer Capability i = 0x9090A2
Sep 28 13:13:28.369:  Channel ID i = 0xA18383
Sep 28 13:13:28.369:  Progress Ind i = 0x8183 - Origination address is non-ISDN
Sep 28 13:13:28.369:  Called Party Number i = 0xA1, '81560', Plan:ISDN, Type:National
Sep 28 13:13:28.373: VDEV_ALLOCATE: 2/0 is allocated
  !--- The Call Switch Module (CSM) is informed about the call. !--- The CSM allocates modem
  2/0 to the incoming call. Sep 28 13:13:28.373: EVENT_FROM_ISDN::dchan_idb=0x618569F4,
  call_id=0x28, ces=0x0 bchan=0x2, event=0x1, cause=0x0 Sep 28 13:13:28.373: dev in call to isdn :
  set dnis_collected & fap_notify Sep 28 13:13:28.373: EVENT_FROM_ISDN:(0028): DEV_INCALL at slot
  2 and port 0 Sep 28 13:13:28.373: EVENT_FROM_ISDN: decode:calling 0ct3 0x0, called oct3 0xA1,
```

oct3a 0x0,mask 0x3C Sep 28 13:13:28.373: EVENT_FROM_ISDN: csm_call_info:calling Oct3 0x0, called oct3 0xA1, oct3a 0x0,mask 0x3C Sep 28 13:13:28.377: CSM_PROC_IDLE: CSM_EVENT_ISDN_CALL at slot 2, port 0 Sep 28 13:13:28.377: Mica Modem(2/0): Configure(0x1 = 0x0) Sep 28 13:13:28.377: Mica Modem(2/0): Configure(0x23 = 0x0) Sep 28 13:13:28.377: **Mica Modem(2/0): Call Setup**

!--- CSM sends the Call Setup Message to Modem 2/0. !--- The modem must now go off-hook. Sep 28 13:13:28.377: csm_connect_pri_vdev: TS allocated at bp_stream 0, bp_Ch 0, vdev_common 0x6141BB68 Sep 28 13:13:28.377: ISDN Se0:23: **TX -> CALL_PROC** pd = 8 callref = 0xD285

Sep 28 13:13:28.377: Channel ID i = 0xA98383

!--- The Call Proceeding Message is sent through the D-channel. Sep 28 13:13:28.377: ISDN Se0:23: **TX -> ALERTING** pd = 8 callref = 0xD285 Sep 28 13:13:28.445: **Mica Modem(2/0): State Transition to Call Setup**

!--- Modem transitions to state Call Setup. !--- For more information on MICA Modem States refer to [MICA Modem States](#). Sep 28 13:13:28.445: **Mica Modem(2/0): Went offhook**

!--- Modem informs the CSM that it went offhook. Sep 28 13:13:28.445: CSM_PROC_IC2_RING: CSM_EVENT_MODEM_OFFHOOK at slot 2, port 0 Sep 28 13:13:28.445: ISDN Se0:23: **TX -> CONNECT** pd = 8 callref = 0xD285

!--- D-channel transmits a CONNECT. Sep 28 13:13:28.461: ISDN Se0:23: **RX <- CONNECT_ACK** pd = 8 callref = 0x5285

!--- The Q.931 CONNECT_ACK message is received. Sep 28 13:13:28.461: ISDN Se0:23: CALL_PROGRESS: CALL_CONNECTED call id 0x28, bchan 2, dsl 0 Sep 28 13:13:28.461: EVENT_FROM_ISDN::dchan_idb=0x618569F4, call_id=0x28, ces=0x0 bchan=0x2, event=0x4, cause=0x0 Sep 28 13:13:28.461: EVENT_FROM_ISDN:(0028): DEV_CONNECTED at slot 2 and port 0 Sep 28 13:13:28.461: CSM_PROC_IC6_WAIT_FOR_CONNECT: CSM_EVENT_ISDN_CONNECTED at slot 2, port 0 Sep 28 13:13:28.465: **Mica Modem(2/0): Link Initiate**

!--- When the Q.931 CONNECT_ACK message is received, the Link initiate message !--- is sent to the MICA modem, and negotiation with remote modem occurs. Sep 28 13:13:28.465: %ISDN-CONNECT: Interface Serial0:2 is now connected to N/A N/A Sep 28 13:13:29.557: **Mica Modem(2/0): State Transition to Connect**

!--- Modem moves to the Connect state. Sep 28 13:13:34.073: Mica Modem(2/0): State Transition to Link Sep 28 13:13:45.478: Mica Modem(2/0): State Transition to Trainup Sep 28 13:13:53.642: Mica Modem(2/0): State Transition to EC Negotiating Sep 28 13:13:54.122: **Mica Modem(2/0): State Transition to Steady State**

!--- Modem transitions to the Steady state. Sep 28 13:13:54.266: TTY97: DSR came up *!--- Indicates that the modem trainup is complete.* Sep 28 13:13:54.266: tty97: Modem: IDLE->(unknown) Sep 28 13:13:54.266: TTY97: EXEC creation Sep 28 13:13:54.266: TTY97: set timer type 10, 30 seconds Sep 28 13:13:57.202: TTY97: Autoselect(2) sample 7E Sep 28 13:13:57.202: TTY97: Autoselect(2) sample 7EFF Sep 28 13:13:57.202: TTY97: Autoselect(2) sample 7EFF7D Sep 28 13:13:57.202: TTY97: Autoselect(2) sample 7EFF7D23 Sep 28 13:13:57.202: TTY97 Autoselect cmd: ppp negotiate *!--- The router detects PPP packets and automatically launches PPP.* Sep 28 13:13:57.206: TTY97: EXEC creation Sep 28 13:13:57.206: TTY97: create timer type 1, 600 seconds Sep 28 13:13:57.334: TTY97: destroy timer type 1 Sep 28 13:13:57.334: TTY97: no timer type 0 to destroy Sep 28 13:13:57.334: As97 IPCP: Install route to 172.22.60.2 Sep 28 13:13:59.334: %LINK-3-UPDOWN: Interface Async97, changed state to up Sep 28 13:13:59.334: As97 PPP: Treating connection as a callin Sep 28 13:13:59.334: As97 PPP: Phase is ESTABLISHING, Passive Open [0 sess, 0 load] Sep 28 13:13:59.334: As97 LCP: State is Listen *!--- LCP negotiation begins.* Sep 28 13:14:00.214: As97 LCP: I CONFREQ [Listen] id 3 len 23 *!--- Incoming LCP CONFREQ. !--- For more information on how to interpret PPP debugs, refer to !--- [Dialup Technology: Troubleshooting Techniques](#).* Sep 28 13:14:00.214: As97 LCP: ACCM 0x000A0000 (0x0206000A0000) Sep 28 13:14:00.214: As97 LCP: MagicNumber 0x0F7CD34A (0x05060F7CD34A) Sep 28 13:14:00.214: As97 LCP: PFC (0x0702) Sep 28 13:14:00.214: As97 LCP: ACFC (0x0802) Sep 28 13:14:00.214: As97 LCP: Callback 6 (0x0D0306) Sep 28 13:14:00.214: Unthrottle 97 Sep 28 13:14:00.214: As97 LCP: O CONFREQ [Listen] id 1 len 43 Sep 28 13:14:00.214: As97 LCP: ACCM 0x000A0000 (0x0206000A0000) Sep 28 13:14:00.214: As97 LCP: AuthProto CHAP (0x0305C22305) Sep 28 13:14:00.214: As97 LCP: MagicNumber 0x3090DE31 (0x05063090DE31) Sep 28 13:14:00.214: As97 LCP: PFC (0x0702) Sep 28 13:14:00.214: As97 LCP: ACFC (0x0802) Sep 28 13:14:00.214: As97 LCP: MRRU 1524 (0x110405F4) Sep 28 13:14:00.214: As97 LCP: EndpointDisc 1 Local (0x130E016D6175692D6E61732D3032) Sep 28 13:14:00.214: As97 LCP: O CONFREQ [Listen] id 3 len 7 Sep 28 13:14:00.214: As97 LCP: Callback 6 (0x0D0306) Sep 28 13:14:00.342: As97 LCP: I CONFREQ [REQsent] id 4 len 20 Sep 28 13:14:00.342: As97 LCP: ACCM 0x000A0000 (0x0206000A0000) Sep 28 13:14:00.342: As97 LCP: MagicNumber 0x0F7CD34A (0x05060F7CD34A) Sep 28 13:14:00.342: As97 LCP: PFC (0x0702) Sep 28 13:14:00.342: As97 LCP: ACFC (0x0802) Sep 28 13:14:00.342: As97 LCP: O CONFACK [REQsent] id 4 len 20 Sep 28 13:14:00.342: As97 LCP: ACCM 0x000A0000 (0x0206000A0000) Sep 28 13:14:00.342: As97 LCP: MagicNumber 0x0F7CD34A (0x05060F7CD34A) Sep 28 13:14:00.342: As97 LCP: PFC (0x0702) Sep 28 13:14:00.342: As97 LCP: ACFC (0x0802) Sep 28 13:14:02.214: As97 LCP: TIMEOUT: State ACKsent Sep 28 13:14:02.214: As97 LCP: O

CONFREQ [ACKsent] id 2 len 43 Sep 28 13:14:02.214: As97 LCP: ACCM 0x000A0000 (0x0206000A0000)
Sep 28 13:14:02.214: As97 LCP: AuthProto CHAP (0x0305C22305) Sep 28 13:14:02.214: As97 LCP:
MagicNumber 0x3090DE31 (0x05063090DE31) Sep 28 13:14:02.214: As97 LCP: PFC (0x0702) Sep 28
13:14:02.214: As97 LCP: ACFC (0x0802) Sep 28 13:14:02.214: As97 LCP: MRRU 1524 (0x110405F4) Sep
28 13:14:02.214: As97 LCP: EndpointDisc 1 Local (0x130E016D6175692D6E61732D3032) Sep 28
13:14:02.326: As97 LCP: I CONFREQ [ACKsent] id 2 len 22 Sep 28 13:14:02.326: As97 LCP: MRRU 1524
(0x110405F4) Sep 28 13:14:02.326: As97 LCP: EndpointDisc 1 Local
(0x130E016D6175692D6E61732D3032) Sep 28 13:14:02.326: As97 LCP: O CONFREQ [ACKsent] id 3 len 25
Sep 28 13:14:02.326: As97 LCP: ACCM 0x000A0000 (0x0206000A0000) Sep 28 13:14:02.326: As97 LCP:
AuthProto CHAP (0x0305C22305) Sep 28 13:14:02.326: As97 LCP: MagicNumber 0x3090DE31
(0x05063090DE31) Sep 28 13:14:02.326: As97 LCP: PFC (0x0702) Sep 28 13:14:02.326: As97 LCP: ACFC
(0x0802) Sep 28 13:14:02.518: As97 LCP: I CONFACK [ACKsent] id 3 len 25 Sep 28 13:14:02.518:
As97 LCP: ACCM 0x000A0000 (0x0206000A0000) Sep 28 13:14:02.518: As97 LCP: AuthProto CHAP
(0x0305C22305) Sep 28 13:14:02.518: As97 LCP: MagicNumber 0x3090DE31 (0x05063090DE31) Sep 28
13:14:02.518: As97 LCP: PFC (0x0702) Sep 28 13:14:02.518: As97 LCP: ACFC (0x0802) Sep 28
13:14:02.518: **As97 LCP: State is Open**

!--- LCP negotiation is complete. Sep 28 13:14:02.518: As97 PPP: Phase is AUTHENTICATING,
by this end [0 sess, 0 load] Sep 28 13:14:02.518: As97 CHAP: O CHALLENGE id 1 len 32 from "maui-
nas-02" Sep 28 13:14:02.646: As97 CHAP: I RESPONSE id 1 len 31 from "async_user" Sep 28
13:14:02.646: As97 AUTH: Started process 0 pid 34 Sep 28 13:14:02.650: **As97 CHAP: O SUCCESS** id 1
len 4

*!--- CHAP authentication is successful. !--- If authentication fails, check the username
and password. !--- Refer to [Dialup Technology: Troubleshooting Techniques](#) .* Sep 28 13:14:02.650:
As97 PPP: Phase is UP [0 sess, 0 load] Sep 28 13:14:02.650: As97 **IPCP: O CONFREQ** [Closed] id 1
len 10

!--- IPCP negotiation begins. Sep 28 13:14:02.650: As97 IPCP: Address 172.22.60.1
(0x0306AC163C01) Sep 28 13:14:02.758: As97 IPCP: I CONFREQ [REQsent] id 1 len 40 Sep 28
13:14:02.758: As97 IPCP: CompressType VJ 15 slots CompressSlotID (0x0206002D0F01) Sep 28
13:14:02.758: As97 IPCP: Address 0.0.0.0 (0x030600000000) Sep 28 13:14:02.758: As97 IPCP:
PrimaryDNS 172.22.53.210 (0x8106AC1635D2) Sep 28 13:14:02.758: As97 IPCP: PrimaryWINS 0.0.0.0
(0x820600000000) Sep 28 13:14:02.758: As97 IPCP: SecondaryDNS 0.0.0.0 (0x830600000000) Sep 28
13:14:02.758: As97 IPCP: SecondaryWINS 0.0.0.0 (0x840600000000) Sep 28 13:14:02.758: As97
AAA/AUTHOR/IPCP: Start. Her address 0.0.0.0, we want 172.22.60.2 Sep 28 13:14:02.758: As97
AAA/AUTHOR/IPCP: Done.

Her address 0.0.0.0, we want 172.22.60.2

!--- Address is obtained from the Address Pool named "Async". Sep 28 13:14:02.758: As97
IPCP: O CONFREQ [REQsent] id 1 len 28 Sep 28 13:14:02.758: As97 IPCP: CompressType VJ 15 slots
CompressSlotID (0x0206002D0F01) Sep 28 13:14:02.758: As97 IPCP: PrimaryWINS 0.0.0.0
(0x820600000000) Sep 28 13:14:02.758: As97 IPCP: SecondaryDNS 0.0.0.0 (0x830600000000) Sep 28
13:14:02.758: As97 IPCP: SecondaryWINS 0.0.0.0 (0x840600000000) Sep 28 13:14:02.802: As97 CCP: I
CONFREQ [Not negotiated] id 1 len 15 Sep 28 13:14:02.802: As97 CCP: MS-PPC supported bits
0x00000001 (0x120600000001) Sep 28 13:14:02.802: As97 CCP: Stacker history 1 check mode EXTENDED
(0x1105000104) Sep 28 13:14:02.802: As97 LCP: O PROTREQ [Open] id 4 len 21 protocol CCP Sep 28
13:14:02.802: As97 LCP: (0x80FD0101000F12060000000111050001) Sep 28 13:14:02.802: As97 LCP:
(0x04) Sep 28 13:14:02.802: As97 IPCP: I CONFACK [REQsent] id 1 len 10 Sep 28 13:14:02.802: As97
IPCP: Address 172.22.60.1 (0x0306AC163C01) Sep 28 13:14:04.650: As97 IPCP: TIMEOUT: State
ACKrcvd Sep 28 13:14:04.650: As97 IPCP: O CONFREQ [ACKrcvd] id 2 len 10 Sep 28 13:14:04.650:
As97 IPCP: Address 172.22.60.1 (0x0306AC163C01) Sep 28 13:14:04.758: As97 IPCP: I CONFACK
[REQsent] id 2 len 10 Sep 28 13:14:04.758: As97 IPCP: Address 172.22.60.1 (0x0306AC163C01) Sep
28 13:14:05.750: As97 IPCP: I CONFREQ [ACKrcvd] id 2 len 34 Sep 28 13:14:05.750: As97 IPCP:
Address 0.0.0.0 (0x030600000000) Sep 28 13:14:05.750: As97 IPCP: PrimaryDNS 172.22.53.210
(0x8106AC1635D2) Sep 28 13:14:05.750: As97 IPCP: PrimaryWINS 0.0.0.0 (0x820600000000) Sep 28
13:14:05.750: As97 IPCP: SecondaryDNS 0.0.0.0 (0x830600000000) Sep 28 13:14:05.750: As97 IPCP:
SecondaryWINS 0.0.0.0 (0x840600000000) Sep 28 13:14:05.750: As97 AAA/AUTHOR/IPCP: Start. Her
address 0.0.0.0, we want 172.22.60.2 Sep 28 13:14:05.750: As97 AAA/AUTHOR/IPCP: Done. Her
address 0.0.0.0, we want 172.22.60.2 Sep 28 13:14:05.750: As97 IPCP: O CONFREQ [ACKrcvd] id 2
len 22 Sep 28 13:14:05.750: As97 IPCP: PrimaryWINS 0.0.0.0 (0x820600000000) Sep 28 13:14:05.754:
As97 IPCP: SecondaryDNS 0.0.0.0 (0x830600000000) Sep 28 13:14:05.754: As97 IPCP: SecondaryWINS
0.0.0.0 (0x840600000000) Sep 28 13:14:05.878: As97 IPCP: I CONFREQ [ACKrcvd] id 3 len 16 Sep 28
13:14:05.878: As97 IPCP: Address 0.0.0.0 (0x030600000000) Sep 28 13:14:05.878: As97 IPCP:
PrimaryDNS 172.22.53.210 (0x8106AC1635D2) Sep 28 13:14:05.878: As97 AAA/AUTHOR/IPCP: Start. Her
address 0.0.0.0, we want 172.22.60.2 Sep 28 13:14:05.878: As97 AAA/AUTHOR/IPCP: Done. Her
address 0.0.0.0, we want 172.22.60.2 Sep 28 13:14:05.878: As97 IPCP: O CONFNAK [ACKrcvd] id 3
len 10 Sep 28 13:14:05.878: As97 IPCP: Address 172.22.60.2 (0x0306AC163C02) Sep 28 13:14:05.990:

As97 IPCP: I CONFREQ [ACKrcvd] id 4 len 16 Sep 28 13:14:05.990: As97 IPCP: Address 172.22.60.2 (0x0306AC163C02) Sep 28 13:14:05.990: As97 IPCP: PrimaryDNS 172.22.53.210 (0x8106AC1635D2) Sep 28 13:14:05.990: As97 AAA/AUTHOR/IPCP: Start. Her address 172.22.60.2, we want 172.22.60.2 Sep 28 13:14:05.990: As97 AAA/AUTHOR/IPCP: Reject 172.22.60.2, using 172.22.60.2 Sep 28 13:14:05.990: As97 AAA/AUTHOR/IPCP: Done. Her address 172.22.60.2, we want 172.22.60.2 Sep 28 13:14:05.994: As97 IPCP: O CONFACK [ACKrcvd] id 4 len 16 Sep 28 13:14:05.994: As97 IPCP: Address 172.22.60.2 (0x0306AC163C02) Sep 28 13:14:05.994: As97 IPCP: PrimaryDNS 172.22.53.210 (0x8106AC1635D2) Sep 28 13:14:05.994: **As97 IPCP: State is Open**
!--- IPCP negotiation is complete. The user is now connected.

Per una chiamata ISDN

maui-nas-02#**debug isdn q931**

ISDN Q931 packets debugging is on

maui-nas-02#**debug ppp negotiation**

PPP protocol negotiation debugging is on

maui-nas-02#**debug ppp authentication**

PPP authentication debugging is on

Sep 28 13:25:02.630: ISDN Se0:23: **RX <- SETUP** pd = 8 callref = 0x5346

!--- Incoming Q.931 Setup message. Sep 28 13:25:02.630: Bearer Capability i = 0x8890218F
Sep 28 13:25:02.630: Channel ID i = 0xA18384 Sep 28 13:25:02.630: Called Party Number i = 0xA1, '81560', Plan:ISDN, Type:National Sep 28 13:25:02.634: %LINK-3-UPDOWN: Interface Serial0:3, changed state to up Sep 28 13:25:02.638: Se0:3 PPP: Treating connection as a callin Sep 28 13:25:02.638: Se0:3 PPP: Phase is ESTABLISHING, Passive Open [0 sess, 1 load] Sep 28 13:25:02.638: Se0:3 LCP: State is Listen Sep 28 13:25:02.638: ISDN Se0:23: TX -> CALL_PROC pd = 8 callref = 0xD346 Sep 28 13:25:02.638: Channel ID i = 0xA98384 Sep 28 13:25:02.638: ISDN Se0:23: TX -> CONNECT pd = 8 callref = 0xD346 Sep 28 13:25:02.638: Channel ID i = 0xA98384 Sep 28 13:25:02.658: ISDN Se0:23: RX <- CONNECT_ACK pd = 8 callref = 0x5346 Sep 28 13:25:02.658: ISDN Se0:23: CALL_PROGRESS: **CALL_CONNECTED** call id 0x2B, bchan 3, dsl 0

!--- Call is connected. Sep 28 13:25:02.886: Se0:3 LCP: I CONFREQ [Listen] id 61 len 28 Sep 28 13:25:02.886: Se0:3 LCP: MagicNumber 0x1EB88B1C (0x05061EB88B1C) Sep 28 13:25:02.886: Se0:3 LCP: MRRU 1524 (0x110405F4) Sep 28 13:25:02.886: Se0:3 LCP: EndpointDisc 1 Local (0x130E0161757374696E5F6973646E) Sep 28 13:25:02.886: Se0:3 LCP: O CONFREQ [Listen] id 1 len 33 Sep 28 13:25:02.886: Se0:3 LCP: AuthProto CHAP (0x0305C22305) Sep 28 13:25:02.886: Se0:3 LCP: MagicNumber 0x309AFABD (0x0506309AFABD) Sep 28 13:25:02.886: Se0:3 LCP: MRRU 1524 (0x110405F4) Sep 28 13:25:02.886: Se0:3 LCP: EndpointDisc 1 Local (0x130E016D6175692D6E61732D3032) Sep 28 13:25:02.886: Se0:3 LCP: O CONFACK [Listen] id 61 len 28 Sep 28 13:25:02.886: Se0:3 LCP: MagicNumber 0x1EB88B1C (0x05061EB88B1C) Sep 28 13:25:02.886: Se0:3 LCP: MRRU 1524 (0x110405F4) Sep 28 13:25:02.886: Se0:3 LCP: EndpointDisc 1 Local (0x130E0161757374696E5F6973646E) Sep 28 13:25:02.922: Se0:3 LCP: I CONFACK [ACKsent] id 1 len 33 Sep 28 13:25:02.922: Se0:3 LCP: AuthProto CHAP (0x0305C22305) Sep 28 13:25:02.922: Se0:3 LCP: MagicNumber 0x309AFABD (0x0506309AFABD) Sep 28 13:25:02.922: Se0:3 LCP: MRRU 1524 (0x110405F4) Sep 28 13:25:02.922: Se0:3 LCP: EndpointDisc 1 Local (0x130E016D6175692D6E61732D3032) Sep 28 13:25:02.922: Se0:3 **LCP: State is Open**

!--- LCP negotiation is complete. Sep 28 13:25:02.922: Se0:3 PPP: Phase is AUTHENTICATING, by this end [0 sess, 1 load] Sep 28 13:25:02.922: Se0:3 CHAP: O CHALLENGE id 1 len 32 from "maui-nas-02" Sep 28 13:25:02.954: Se0:3 CHAP: I RESPONSE id 1 len 32 from "austin_isdn" Sep 28 13:25:02.954: Se0:3 **CHAP: O SUCCESS** id 1 len 4

!--- PPP CHAP authentication is successful. Sep 28 13:25:02.958: Se0:3 PPP: Phase is VIRTUALIZED [0 sess, 1 load] Sep 28 13:25:02.958: Vi1 PPP: Phase is DOWN, Setup [0 sess, 1 load] Sep 28 13:25:02.982: Vi1 PPP: Phase is DOWN, Setup [0 sess, 1 load] Sep 28 13:25:02.982: Se0:3 IPCP: Packet buffered while building MLP bundle interface Sep 28 13:25:02.986: %LINK-3-UPDOWN: **Interface Virtual-Access1, changed state to up**

!--- Virtual-Access Interface is up. !--- This interface controls the incoming call. Sep 28 13:25:02.986: Vi1 PPP: Treating connection as a callin Sep 28 13:25:02.986: Vi1 PPP: Phase is ESTABLISHING, Passive Open [0 sess, 1 load] Sep 28 13:25:02.986: Vi1 LCP: State is Listen Sep 28 13:25:02.986: Vi1 PPP: Phase is UP [0 sess, 1 load] Sep 28 13:25:02.986: Vi1 IPCP: O CONFREQ [Closed] id 1 len 10 Sep 28 13:25:02.986: Vi1 IPCP: Address 172.22.61.1 (0x0306AC163D01) Sep 28 13:25:02.990: Vi1 MLP: Added first link Se0:3 to bundle austin_isdn Sep 28 13:25:02.990: Vi1 PPP: Pending ncpQ size is 1 Sep 28 13:25:02.990: Se0:3 IPCP: Redirect packet to Vi1 Sep 28 13:25:02.990: Vi1 IPCP: I CONFREQ [REQsent] id 45 len 10 Sep 28 13:25:02.990: Vi1 IPCP: Address

10.0.0.1 (0x03060A000001) Sep 28 13:25:02.990: Vi1 AAA/AUTHOR/IPCP: Start. Her address 10.0.0.1, we want 0.0.0.0 Sep 28 13:25:02.990: Vi1 AAA/AUTHOR/IPCP: Reject 10.0.0.1, using 0.0.0.0 Sep 28 13:25:02.990: Vi1 AAA/AUTHOR/IPCP: Done. Her address 10.0.0.1, we want 0.0.0.0 Sep 28 13:25:02.990: Vi1 IPCP: O CONFNAK [REQsent] id 45 len 10 Sep 28 13:25:02.990: Vi1 IPCP: **Address 172.22.61.2** (0x0306AC163D02)

!--- Peer IP address is assigned from IP Pool named "ISDN". Sep 28 13:25:02.990: Se0:3 CDPCP: MLP bundle interface is built, process packets now Sep 28 13:25:02.990: Se0:3 CDPCP: Redirect packet to Vi1 Sep 28 13:25:02.990: Vi1 CDPCP: I CONFREQ [Not negotiated] id 23 len 4 Sep 28 13:25:02.990: Vi1 LCP: O PROTREJ [Open] id 1 len 10 protocol CDPCP (0x820701170004) Sep 28 13:25:03.010: Vi1 IPCP: I CONFACK [REQsent] id 1 len 10 Sep 28 13:25:03.010: Vi1 IPCP: Address 172.22.61.1 (0x0306AC163D01) Sep 28 13:25:03.010: Vi1 IPCP: I CONFREQ [ACKrcvd] id 46 len 4 Sep 28 13:25:03.010: Vi1 IPCP: O CONFACK [ACKrcvd] id 46 len 4 Sep 28 13:25:03.010: **Vi1 IPCP: State is Open**

!--- IPCP negotiation is complete. The call is now connected. Sep 28 13:25:03.014: Di10 IPCP: Install route to 172.22.61.2 Sep 28 13:25:03.958: %LINEPROTO-5-UPDOWN: Line protocol on Interface Serial0:3, changed state to up Sep 28 13:25:03.986: %LINEPROTO-5-UPDOWN: Line protocol on Interface Virtual-Access1, changed state to up Sep 28 13:25:04.146: ISDN Se0:23: **RX <- SETUP** pd = 8 callref = 0x5409

!--- The second link in the multilink connection arrives. Sep 28 13:25:04.150: Bearer Capability i = 0x8890218F Sep 28 13:25:04.150: Channel ID i = 0xA18385 Sep 28 13:25:04.150: Called Party Number i = 0xA1, '81560', Plan:ISDN, Type:National Sep 28 13:25:04.154: %LINK-3-UPDOWN: Interface Serial0:4, changed state to up Sep 28 13:25:04.154: %ISDN-6-CONNECT: Interface Serial0:3 is now connected to austin_isdn Sep 28 13:25:04.154: Se0:4 PPP: Treating connection as a callin Sep 28 13:25:04.154: Se0:4 PPP: Phase is ESTABLISHING, Passive Open [0 sess, 1 load] Sep 28 13:25:04.154: Se0:4 LCP: State is Listen Sep 28 13:25:04.158: ISDN Se0:23: TX -> CALL_PROC pd = 8 callref = 0xD409 Sep 28 13:25:04.158: Channel ID i = 0xA98385 Sep 28 13:25:04.158: ISDN Se0:23: TX -> CONNECT pd = 8 callref = 0xD409 Sep 28 13:25:04.158: Channel ID i = 0xA98385 Sep 28 13:25:04.178: ISDN Se0:23: RX <- CONNECT_ACK pd = 8 callref = 0x5409 Sep 28 13:25:04.178: ISDN Se0:23: CALL_PROGRESS: CALL_CONNECTED call id 0x2C, bchan 4, dsl 0 Sep 28 13:25:04.394: Se0:4 LCP: I CONFREQ [Listen] id 51 len 28 Sep 28 13:25:04.394: Se0:4 LCP: MagicNumber 0x1EB8910D (0x05061EB8910D) Sep 28 13:25:04.394: Se0:4 LCP: MRRU 1524 (0x110405F4) Sep 28 13:25:04.394: Se0:4 LCP: EndpointDisc 1 Local (0x130E0161757374696E5F6973646E) Sep 28 13:25:04.394: Se0:4 LCP: O CONFREQ [Listen] id 1 len 33 Sep 28 13:25:04.394: Se0:4 LCP: AuthProto CHAP (0x0305C22305) Sep 28 13:25:04.394: Se0:4 LCP: MagicNumber 0x309B00A6 (0x0506309B00A6) Sep 28 13:25:04.394: Se0:4 LCP: MRRU 1524 (0x110405F4) Sep 28 13:25:04.394: Se0:4 LCP: EndpointDisc 1 Local (0x130E016D6175692D6E61732D3032) Sep 28 13:25:04.394: Se0:4 LCP: O CONFACK [Listen] id 51 len 28 Sep 28 13:25:04.394: Se0:4 LCP: MagicNumber 0x1EB8910D (0x05061EB8910D) Sep 28 13:25:04.394: Se0:4 LCP: MRRU 1524 (0x110405F4) Sep 28 13:25:04.394: Se0:4 LCP: EndpointDisc 1 Local (0x130E0161757374696E5F6973646E) Sep 28 13:25:04.430: Se0:4 LCP: I CONFACK [ACKsent] id 1 len 33 Sep 28 13:25:04.430: Se0:4 LCP: AuthProto CHAP (0x0305C22305) Sep 28 13:25:04.430: Se0:4 LCP: MagicNumber 0x309B00A6 (0x0506309B00A6) Sep 28 13:25:04.430: Se0:4 LCP: MRRU 1524 (0x110405F4) Sep 28 13:25:04.430: Se0:4 LCP: EndpointDisc 1 Local (0x130E016D6175692D6E61732D3032) Sep 28 13:25:04.430: Se0:4 LCP: State is Open Sep 28 13:25:04.430: Se0:4 PPP: Phase is AUTHENTICATING, by this end [0 sess, 1 load] Sep 28 13:25:04.430: Se0:4 CHAP: O CHALLENGE id 1 len 32 from "maui-nas-02" Sep 28 13:25:04.462: Se0:4 CHAP: I RESPONSE id 1 len 32 from "austin_isdn" Sep 28 13:25:04.466: Se0:4 CHAP: O SUCCESS id 1 len 4 Sep 28 13:25:04.466: Se0:4 PPP: Phase is VIRTUALIZED [0 sess, 1 load] Sep 28 13:25:04.466: **Vi1 MLP: Added link Se0:4 to bundle austin_isdn**

!--- An additional Link is now added to exiting Virtual Interface Bundle. Sep 28 13:25:05.466: %LINEPROTO-5-UPDOWN: Line protocol on Interface Serial0:4, changed state to up Sep 28 13:25:10.154: **%ISDN-6-CONNECT:**

Interface Serial0:4 is now connected to austin_isdn

!--- The second call is connected. The multilink Bundle is complete. maui-nas-02#

Informazioni correlate

- [Pagine di supporto per la tecnologia di composizione e accesso](#)
- [Documentazione e supporto tecnico – Cisco Systems](#)