

Configuration du tunnel L2TP entre un ordinateur Windows et un routeur Cisco

Contenu

[Introduction](#)

[Conditions préalables](#)

[Conditions requises](#)

[Components Used](#)

[Configuration](#)

[Diagramme du réseau](#)

[Configurations](#)

[Vérification](#)

[Dépannage](#)

[Informations connexes](#)

Introduction

Ce document décrit comment configurer un tunnel L2TP (Layer 2 Tunneling Protocol) entre une machine Windows et un routeur Cisco.

Conditions préalables

Conditions requises

Cisco recommande que vous sachiez que la machine windows peut envoyer une requête ping à l'adresse IP de l'interface physique sur le routeur.

Components Used

Ce document n'est pas limité à des versions de matériel et de logiciel spécifiques.

The information in this document was created from the devices in a specific lab environment. All of the devices used in this document started with a cleared (default) configuration. If your network is live, make sure that you understand the potential impact of any command.

Configuration

Diagramme du réseau

Ce document utilise la configuration réseau suivante :



Configurations

Configuration de l'agrégateur :

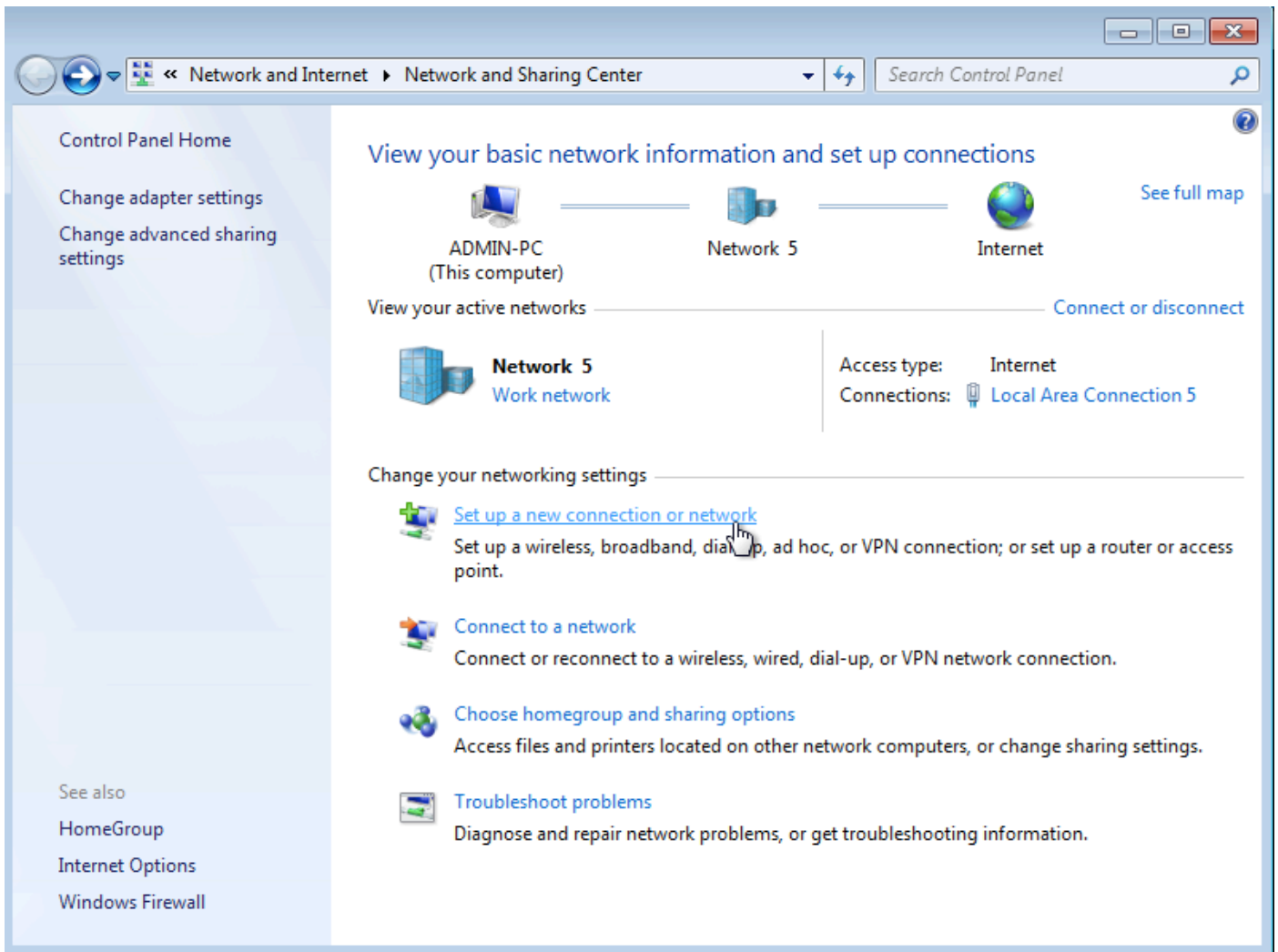
Un exemple de configuration sur l'agrégateur est illustré :

```
interface GigabitEthernet0/0/1
 ip address 192.168.1.1 255.255.255.0
 negotiation auto
end
interface Loopback100
 ip address 172.16.1.1 255.255.255.255
end
vpdn enable
vpdn-group 1
 ! Default L2TP VPDN group
 accept-dialin
 protocol l2tp
 virtual-template 1
no l2tp tunnel authentication
interface Virtual-Template1
 ip unnumbered Loopback100
 peer default ip address pool test
 ppp authentication chap callout
 ppp ipcp dns 4.2.2.1 4.2.2.2
end
ip local pool test 10.1.1.2 10.1.1.100
```

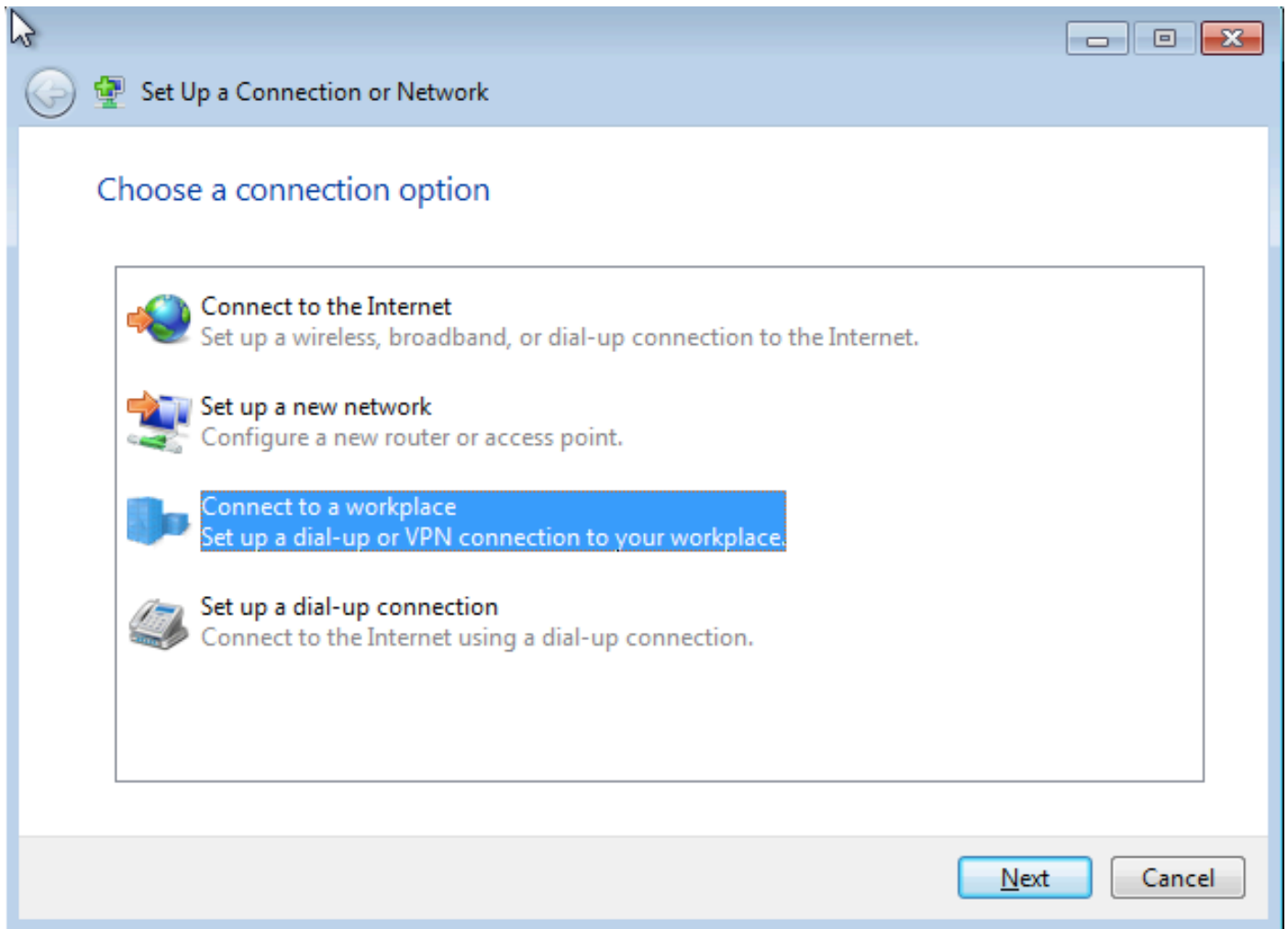
Configurations et paramètres Windows Machine

Procédez comme suit :

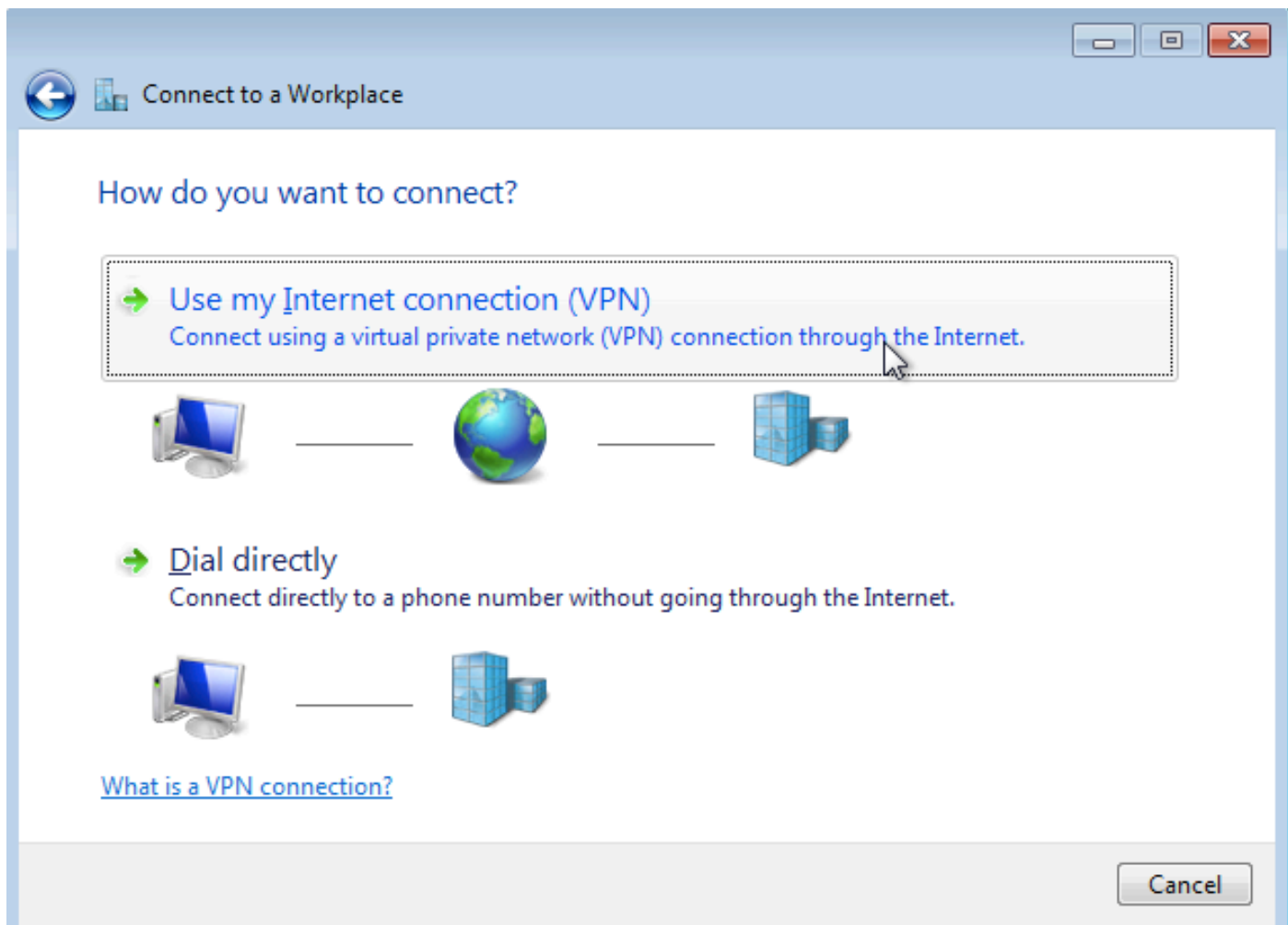
Étape 1. Ouvrez **Centre Réseau et partage** et cliquez sur **Configurer une nouvelle connexion ou un nouveau réseau** comme indiqué dans cette image.



Étape 2. Sélectionnez **Se connecter à un lieu de travail** et cliquez sur **Suivant**



Étape 3. Sélectionnez **Utiliser ma connexion Internet (VPN)**



Étape 4. Entrez l'adresse IP de l'agrégateur (dans ce cas, 192.168.1.1), attribuez un nom à la connexion (dans ce cas, donnez le nom VPDN) et cliquez sur **Suivant**.

Connect to a Workplace

Type the Internet address to connect to

Your network administrator can give you this address.

Internet address: 192.168.1.1

Destination name: VPDN

Use a smart card

Allow other people to use this connection
This option allows anyone with access to this computer to use this connection.

Don't connect now; just set it up so I can connect later

Next Cancel

Étape 5. Entrez le nom d'utilisateur et le mot de passe, puis cliquez sur **Connect**

Connect to a Workplace

Type your user name and password

User name: cisco

Password: ●●●●●

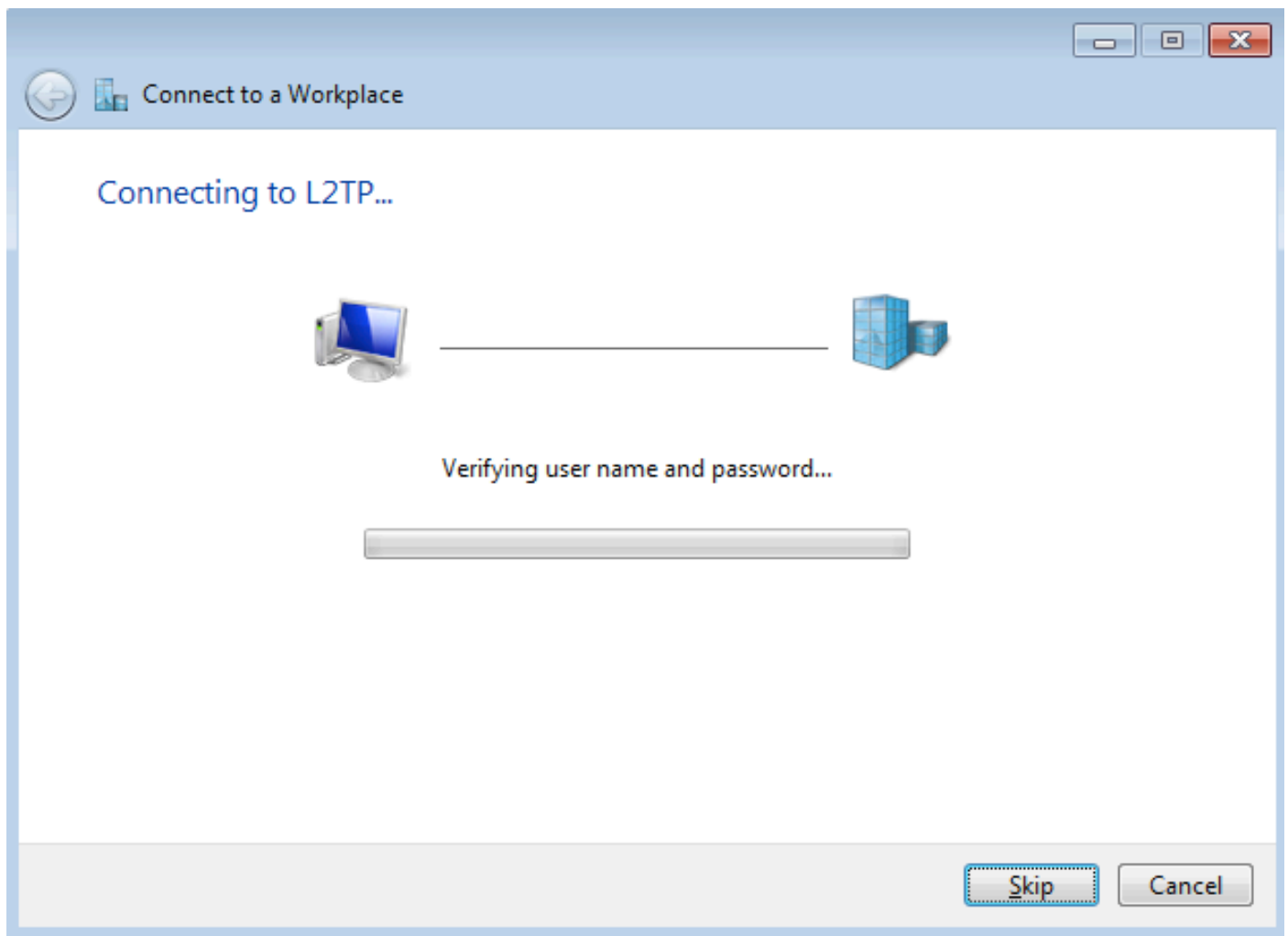
Show characters

Remember this password

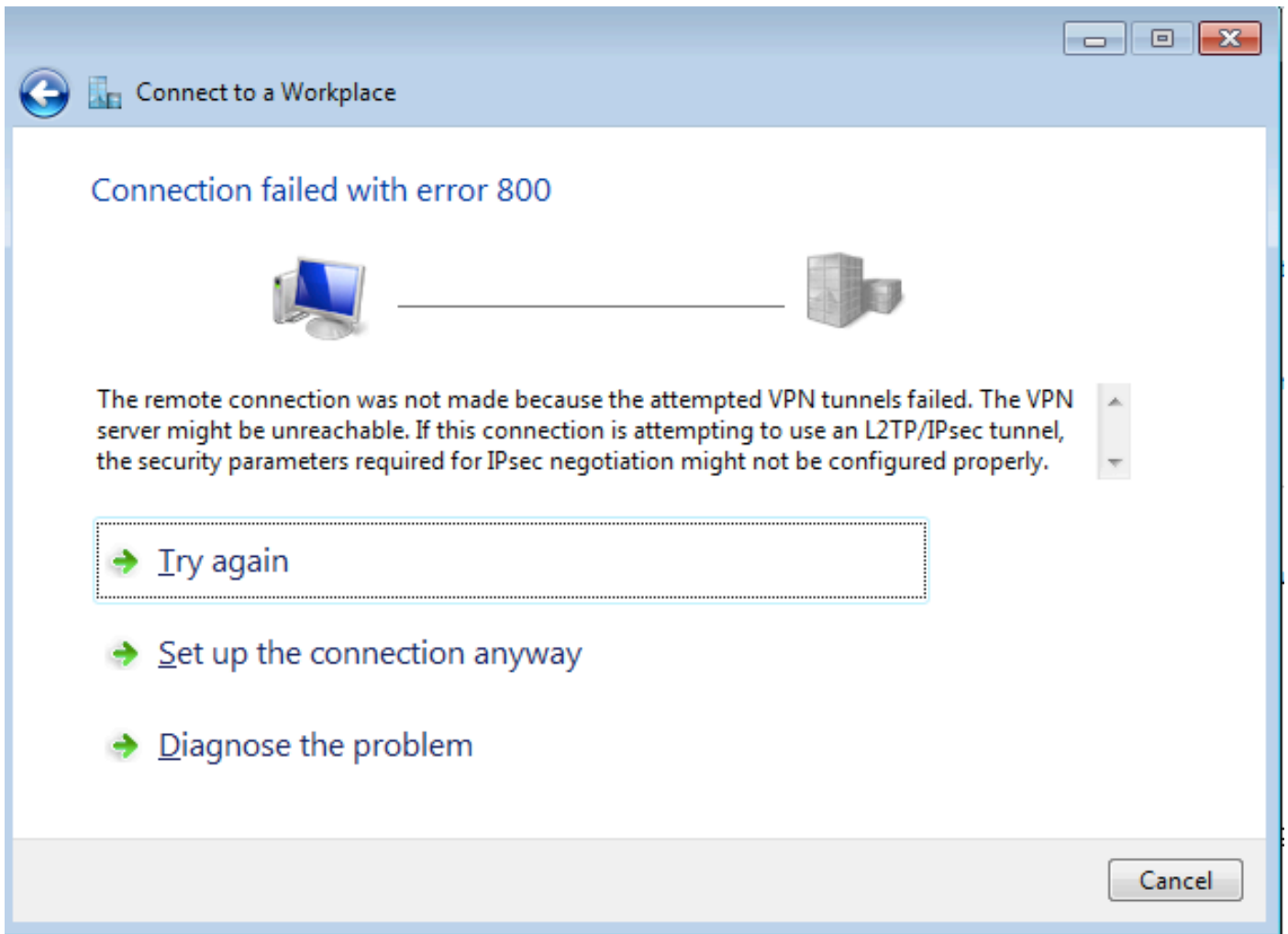
Domain (optional):

Connect Cancel

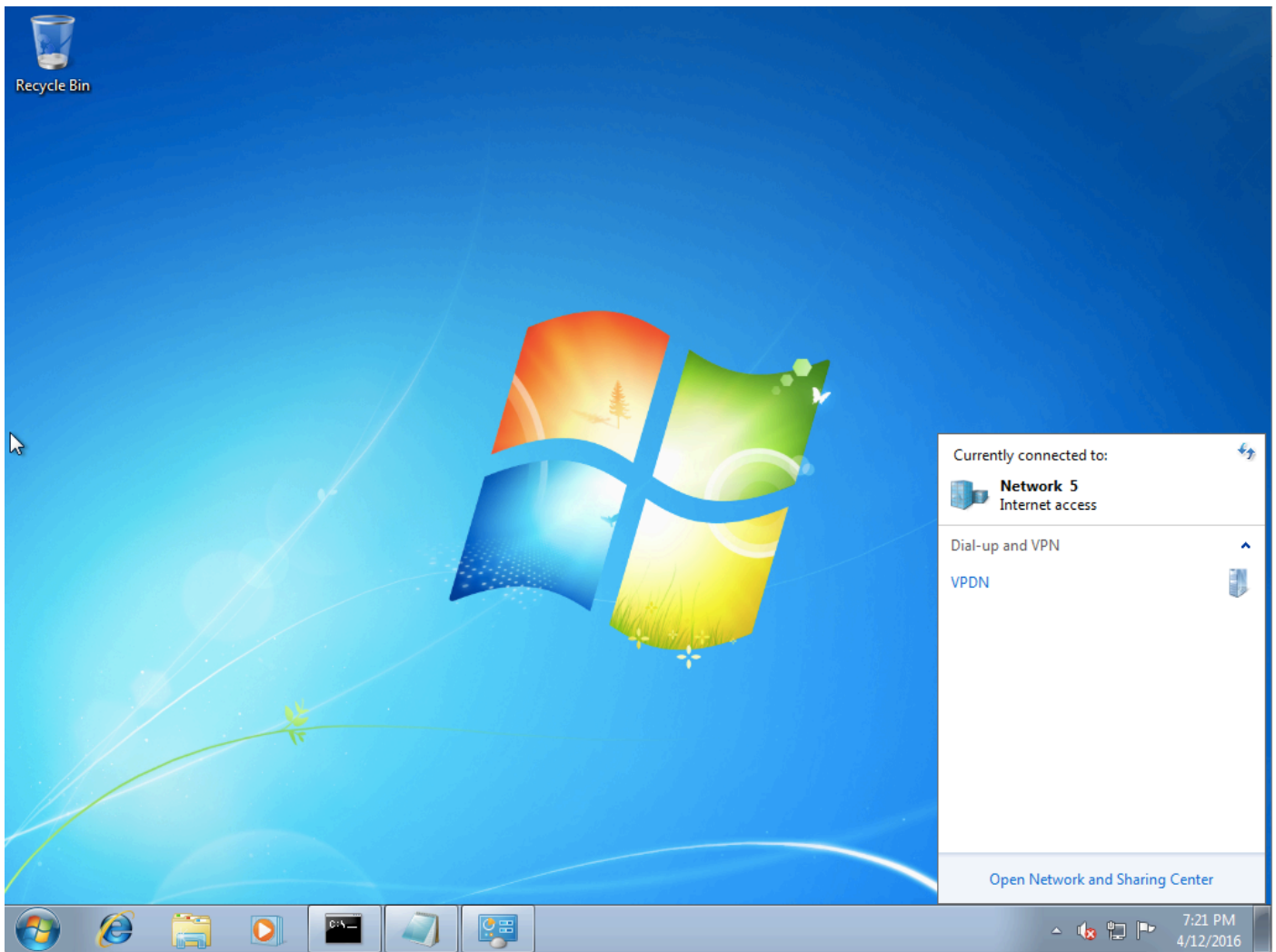
Étape 6. Vérifier le nom d'utilisateur et le mot de passe



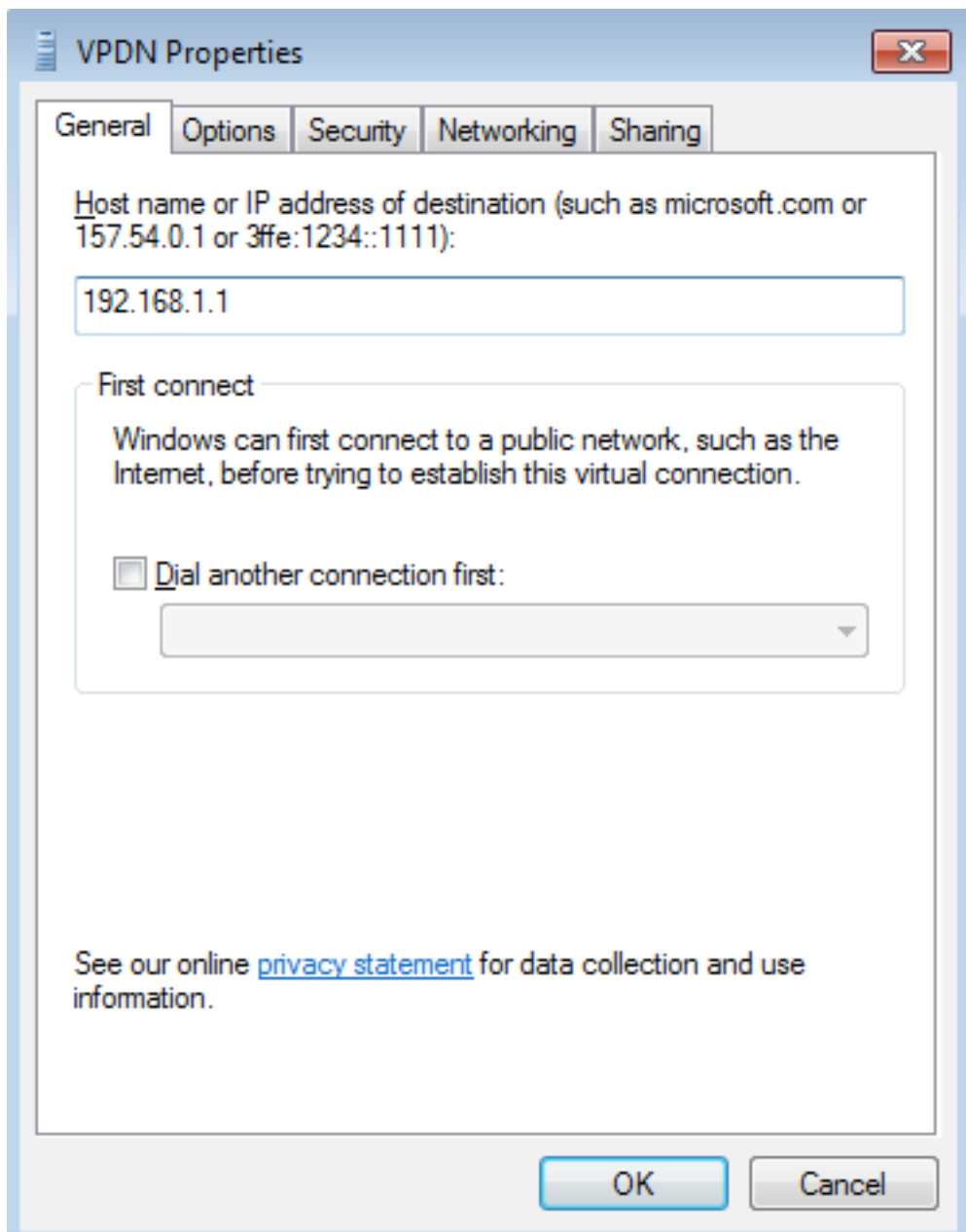
Étape 7. Il peut échouer pour la première fois, comme le montre cette image.



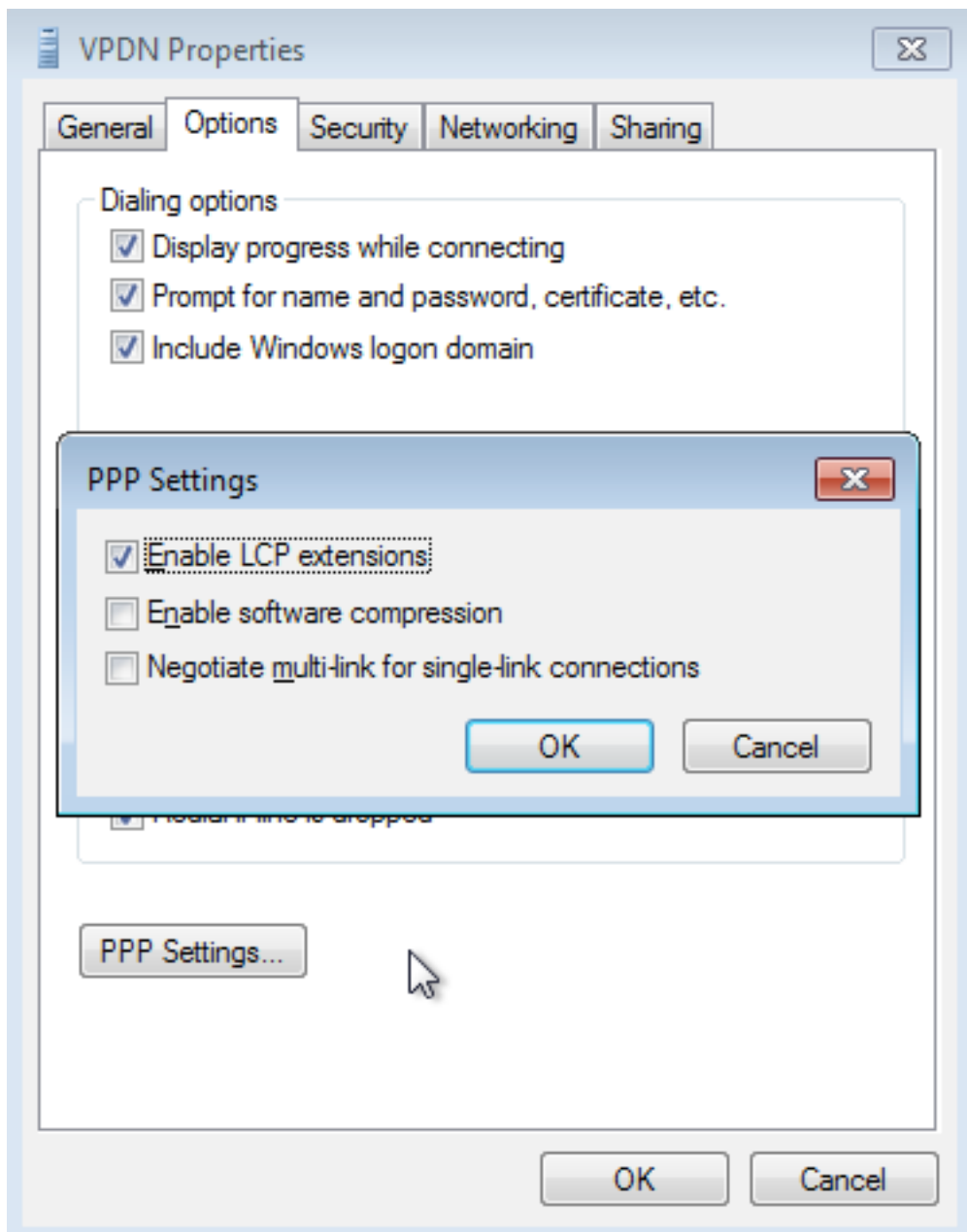
Étape 8. Cliquez sur **Configurer la connexion de toute façon** et ouvrez l'onglet **Réseaux**.



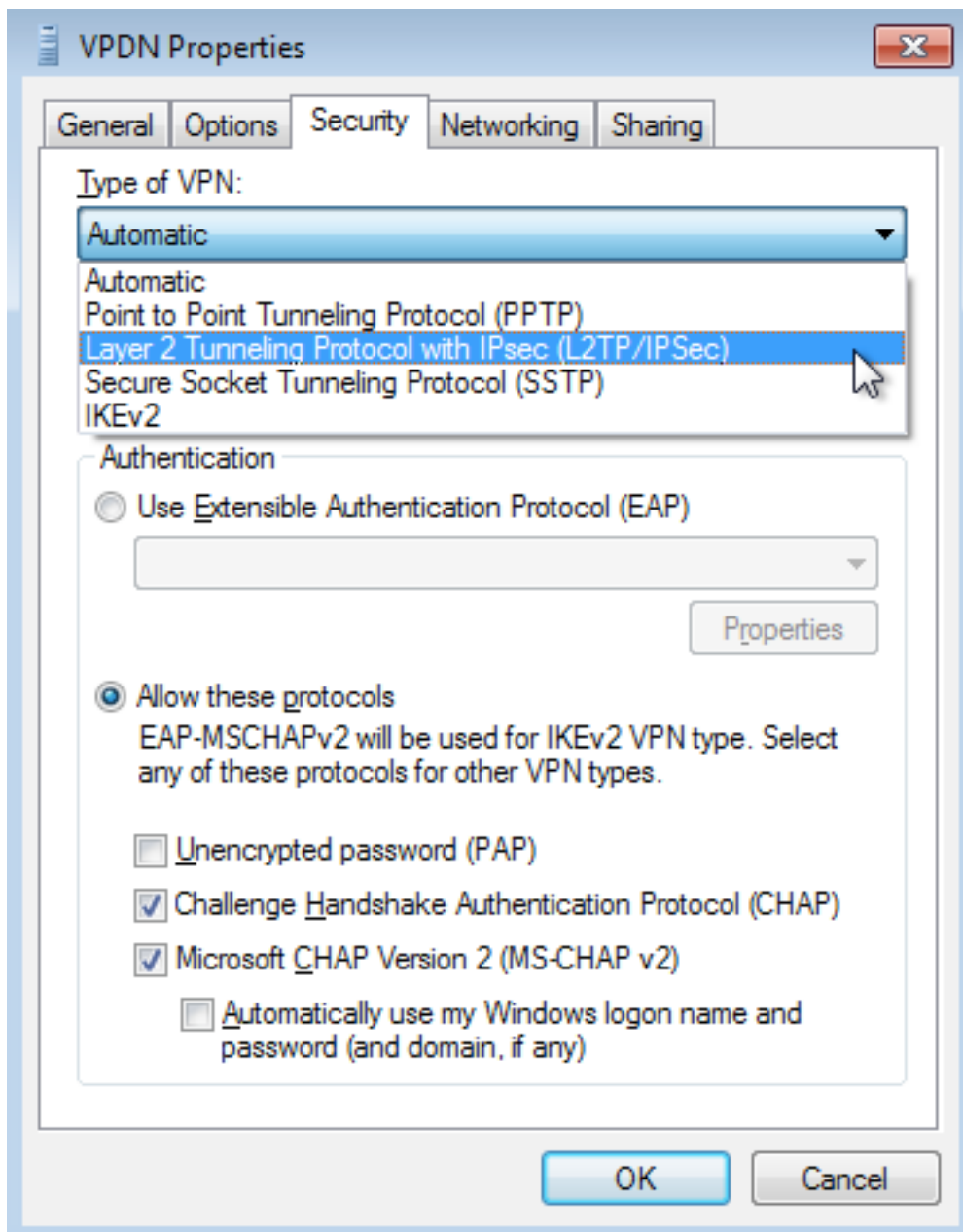
Étape 9. Cliquez avec le bouton droit sur la connexion (ici VPDN) et cliquez sur **Propriétés**.
Vérifiez l'adresse IP de l'agrégateur (ici 192.168.1.1)



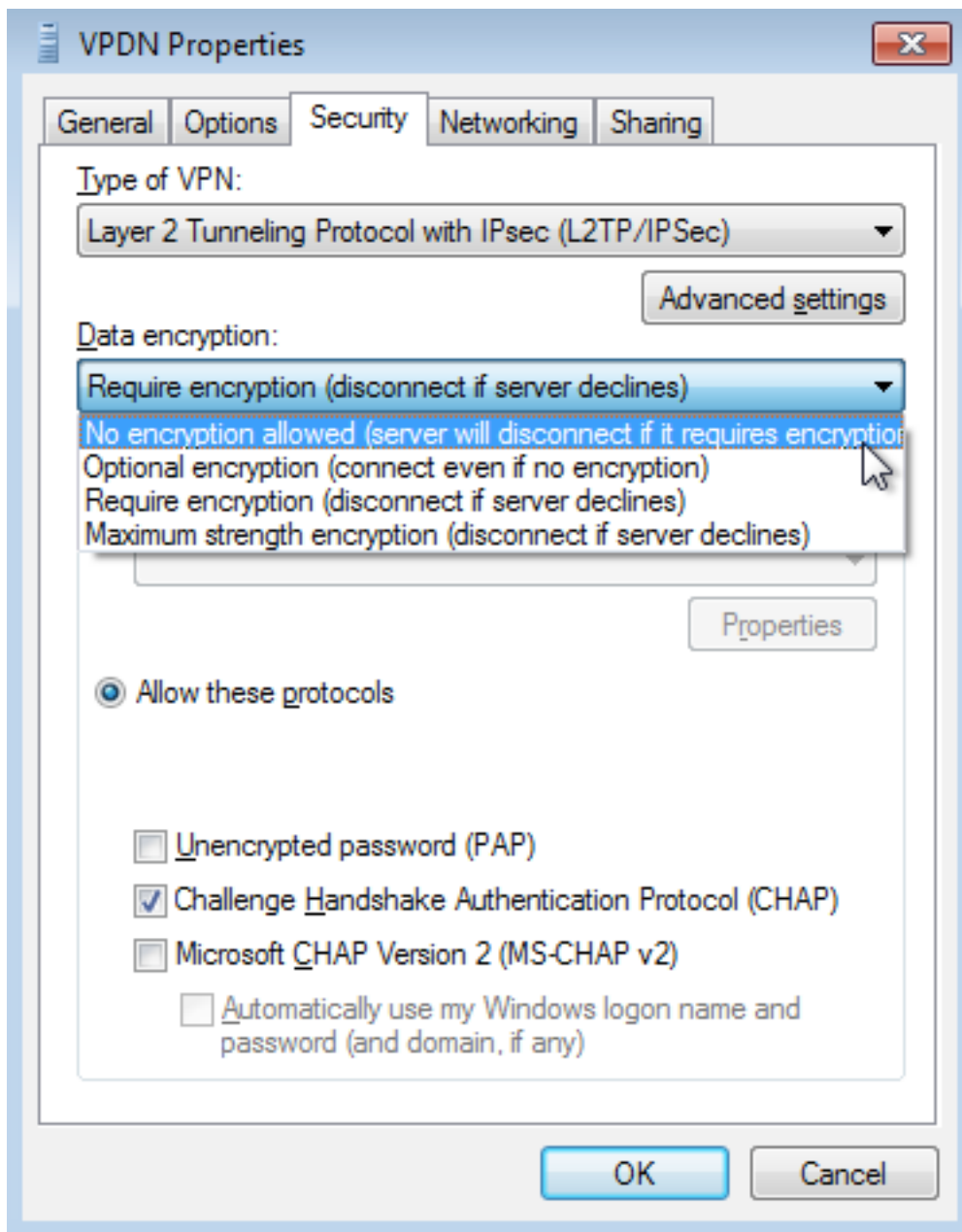
Étape 10. Accédez à **Options>PPP Settings** et vérifiez les paramètres, comme indiqué dans cette image.



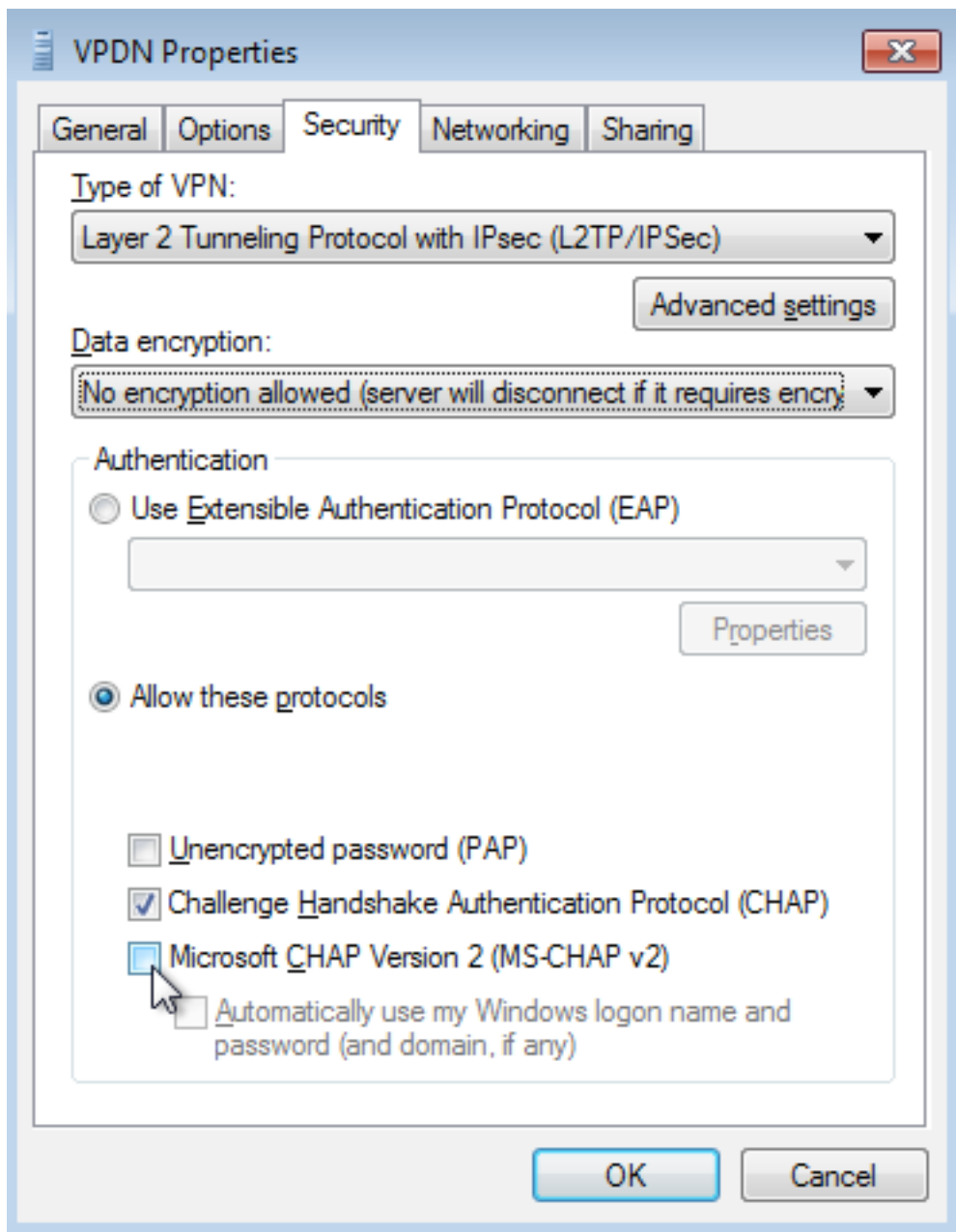
Étape 11. Accédez à **Security >Type of VPN >Layer 2 Tunneling Protocol with IPsec**, comme illustré dans cette image.



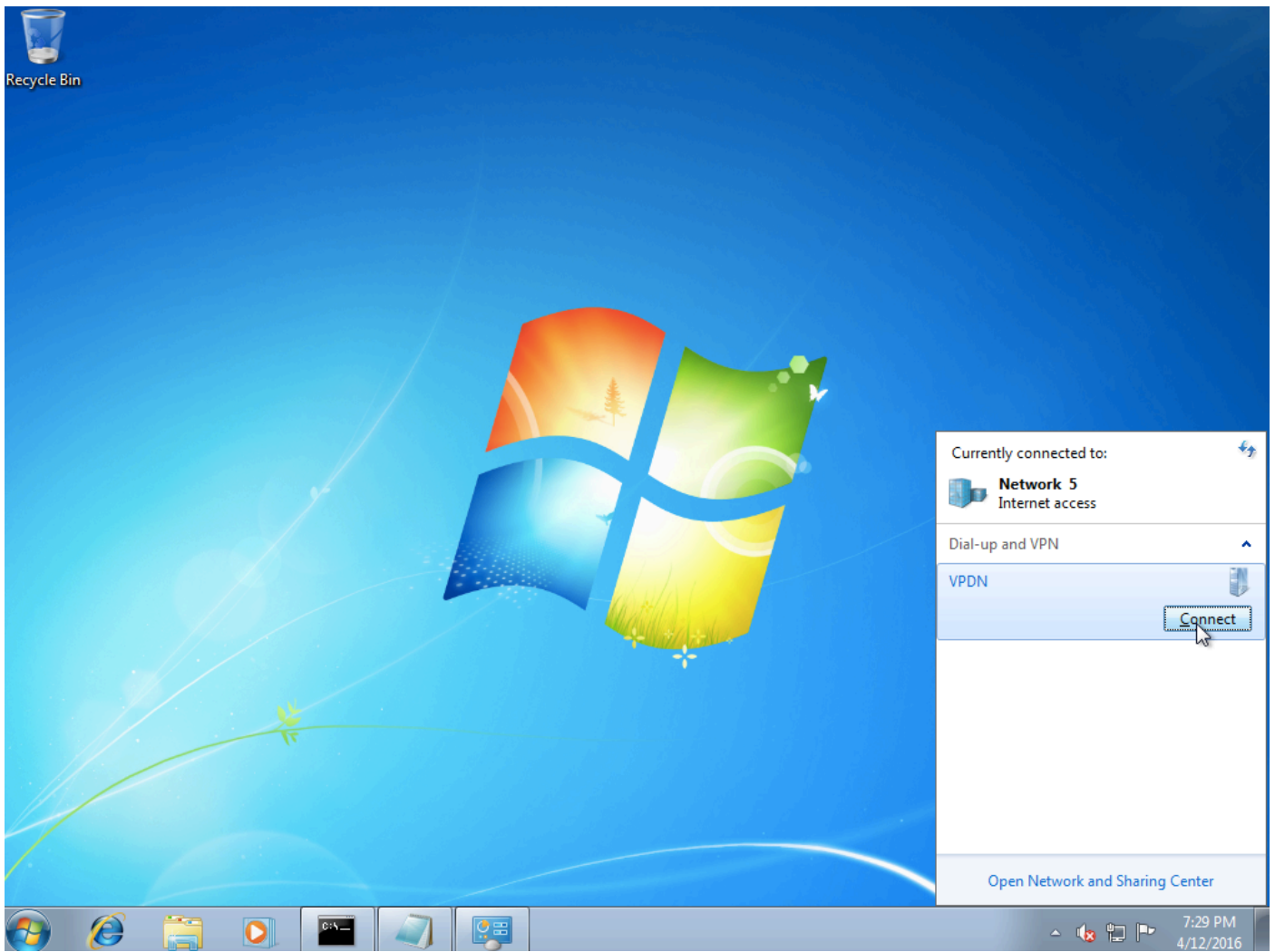
Étape 12. Sélectionnez **No encryption allowed** option dans le menu déroulant Data encryption :



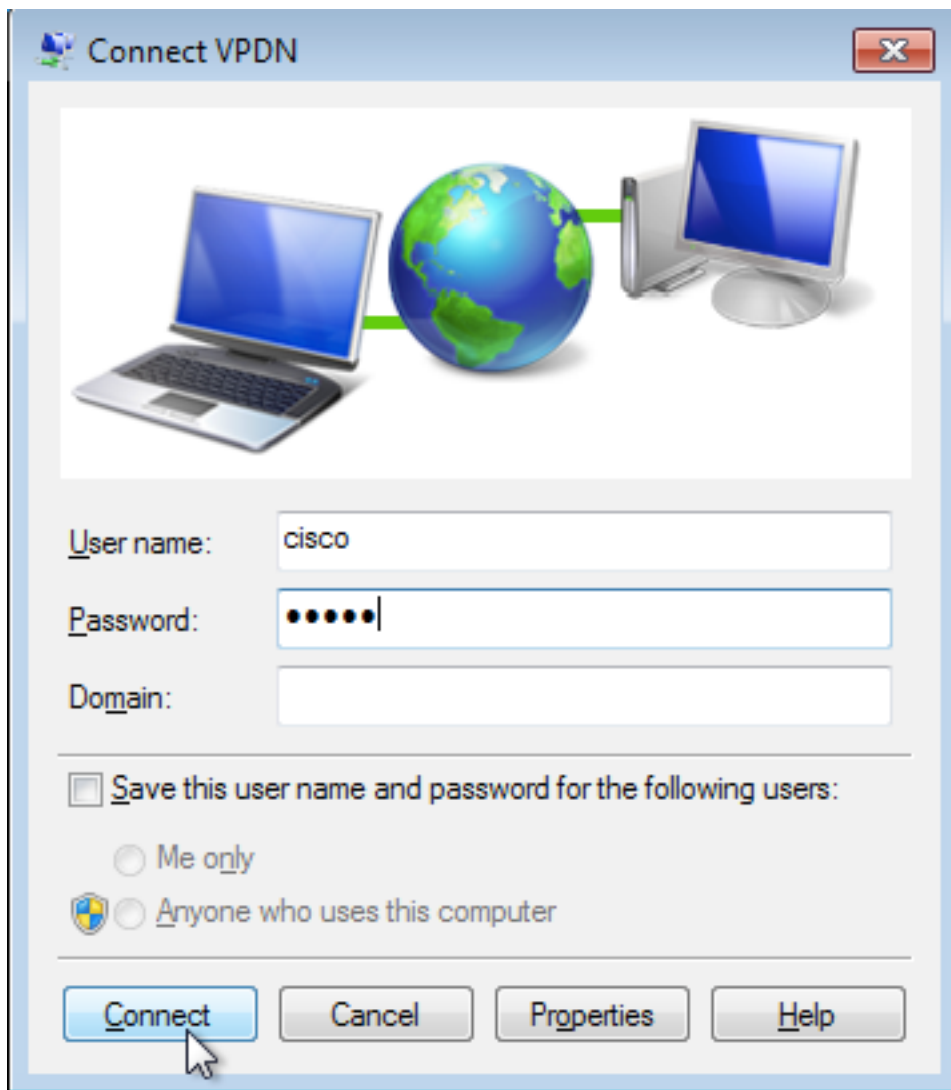
Étape 13. Désélectionnez **Microsoft CHAP Version 2** et cliquez sur **OK**.



Étape 14. Ouvrez le réseau (ici VPDN) et cliquez sur **Connect**.

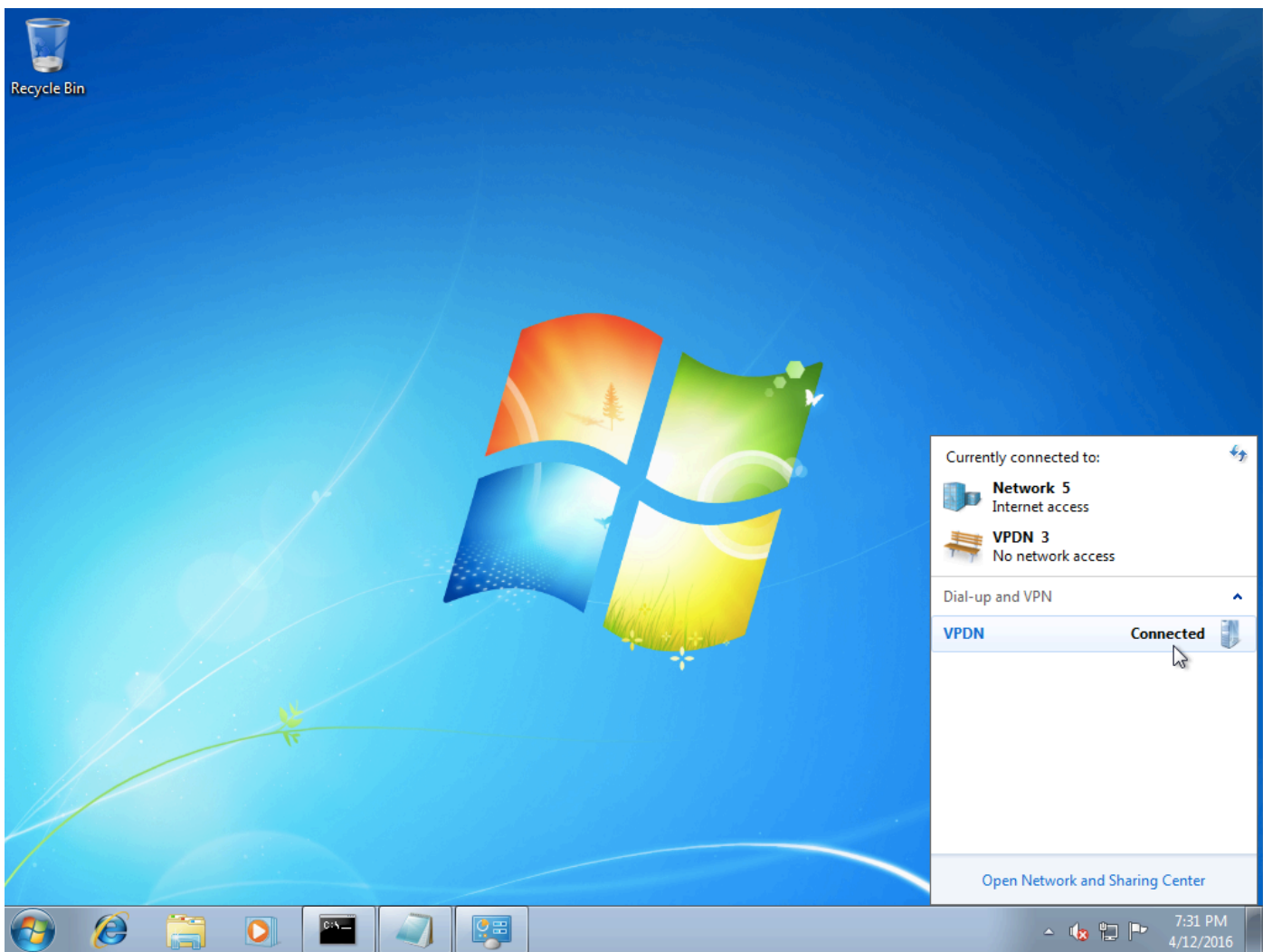


Étape 15. Saisissez le nom d'utilisateur et le mot de passe, puis cliquez sur **Connect**



Vérification

Étape 1. Ouvrez à nouveau l'onglet **Réseaux**, sélectionnez le réseau (nommé VPDN dans cet exemple) et vérifiez que l'état est Connecté.



Étape 2. Ouvrez l'invite de commandes et exécutez la commande **ipconfig /all**.

```
PPP adapter UPDN:

Connection-specific DNS Suffix . . . . . : UPDN
Description . . . . . : 
Physical Address . . . . . : 
DHCP Enabled. . . . . : No
Autoconfiguration Enabled . . . . . : Yes
IPv4 Address. . . . . : 10.1.1.9(Preferred)
Subnet Mask . . . . . : 255.255.255.255
Default Gateway . . . . . : 0.0.0.0
DNS Servers . . . . . : 4.2.2.1
                       4.2.2.2
NetBIOS over Tcpip. . . . . : Enabled
```

L'adresse IPv4 et le serveur de noms de domaine (DNS) sont attribués par l'agrégateur après avoir terminé la phase PPP IPCP (Internet Protocol Control Protocol).

Étape 3. Exécutez la commande **debug ppp negotiation** et les autres commandes show sur Aggregator :

```
Aggregator#
*Apr 12 06:17:38.148: PPP: Alloc Context [38726D0C]
*Apr 12 06:17:38.148: ppp11 PPP: Phase is ESTABLISHING
*Apr 12 06:17:38.148: ppp11 PPP: Using vpn set call direction
```

```
*Apr 12 06:17:38.148: ppp11 PPP: Treating connection as a callin
*Apr 12 06:17:38.148: ppp11 PPP: Session handle[A600000B] Session id[11]
*Apr 12 06:17:38.148: ppp11 LCP: Event[OPEN] State[Initial to Starting]
*Apr 12 06:17:38.148: ppp11 PPP: No remote authentication for call-in
*Apr 12 06:17:38.148: ppp11 PPP LCP: Enter passive mode, state[Stopped]
*Apr 12 06:17:38.607: ppp11 LCP: I CONFREQ [Stopped] id 0 len 21
*Apr 12 06:17:38.607: ppp11 LCP: MRU 1400 (0x01040578)
*Apr 12 06:17:38.607: ppp11 LCP: MagicNumber 0x795C7CD1 (0x0506795C7CD1)
*Apr 12 06:17:38.607: ppp11 LCP: PFC (0x0702)
*Apr 12 06:17:38.607: ppp11 LCP: ACFC (0x0802)
*Apr 12 06:17:38.607: ppp11 LCP: Callback 6 (0x0D0306)
*Apr 12 06:17:38.608: ppp11 LCP: O CONFREQ [Stopped] id 1 len 10
*Apr 12 06:17:38.608: ppp11 LCP: MagicNumber 0xF7C3D2B9 (0x0506F7C3D2B9)
*Apr 12 06:17:38.608: ppp11 LCP: O CONFREQ [Stopped] id 0 len 7
*Apr 12 06:17:38.608: ppp11 LCP: Callback 6 (0x0D0306)
*Apr 12 06:17:38.608: ppp11 LCP: Event[Receive ConfReq-] State[Stopped to REQsent]
*Apr 12 06:17:38.615: ppp11 LCP: I CONFACK [REQsent] id 1 len 10
*Apr 12 06:17:38.615: ppp11 LCP: MagicNumber 0xF7C3D2B9 (0x0506F7C3D2B9)
*Apr 12 06:17:38.615: ppp11 LCP: Event[Receive ConfAck] State[REQsent to ACKrcvd]
*Apr 12 06:17:38.615: ppp11 LCP: I CONFREQ [ACKrcvd] id 1 len 18
*Apr 12 06:17:38.615: ppp11 LCP: MRU 1400 (0x01040578)
*Apr 12 06:17:38.615: ppp11 LCP: MagicNumber 0x795C7CD1 (0x0506795C7CD1)
*Apr 12 06:17:38.616: ppp11 LCP: PFC (0x0702)
*Apr 12 06:17:38.616: ppp11 LCP: ACFC (0x0802)
*Apr 12 06:17:38.616: ppp11 LCP: O CONFNAK [ACKrcvd] id 1 len 8
*Apr 12 06:17:38.616: ppp11 LCP: MRU 1500 (0x010405DC)
*Apr 12 06:17:38.616: ppp11 LCP: Event[Receive ConfReq-] State[ACKrcvd to ACKrcvd]
*Apr 12 06:17:38.617: ppp11 LCP: I CONFREQ [ACKrcvd] id 2 len 18
*Apr 12 06:17:38.617: ppp11 LCP: MRU 1400 (0x01040578)
*Apr 12 06:17:38.617: ppp11 LCP: MagicNumber 0x795C7CD1 (0x0506795C7CD1)
*Apr 12 06:17:38.617: ppp11 LCP: PFC (0x0702)
*Apr 12 06:17:38.617: ppp11 LCP: ACFC (0x0802)
*Apr 12 06:17:38.617: ppp11 LCP: O CONFNAK [ACKrcvd] id 2 len 8
*Apr 12 06:17:38.617: ppp11 LCP: MRU 1500 (0x010405DC)
*Apr 12 06:17:38.617: ppp11 LCP: Event[Receive ConfReq-] State[ACKrcvd to ACKrcvd]
*Apr 12 06:17:38.618: ppp11 LCP: I CONFREQ [ACKrcvd] id 3 len 18
*Apr 12 06:17:38.618: ppp11 LCP: MRU 1500 (0x010405DC)
*Apr 12 06:17:38.618: ppp11 LCP: MagicNumber 0x795C7CD1 (0x0506795C7CD1)
*Apr 12 06:17:38.618: ppp11 LCP: PFC (0x0702)
*Apr 12 06:17:38.618: ppp11 LCP: ACFC (0x0802)
*Apr 12 06:17:38.618: ppp11 LCP: O CONFACK [ACKrcvd] id 3 len 18
*Apr 12 06:17:38.618: ppp11 LCP: MRU 1500 (0x010405DC)
*Apr 12 06:17:38.618: ppp11 LCP: MagicNumber 0x795C7CD1 (0x0506795C7CD1)
*Apr 12 06:17:38.618: ppp11 LCP: PFC (0x0702)
*Apr 12 06:17:38.619: ppp11 LCP: ACFC (0x0802)
*Apr 12 06:17:38.619: ppp11 LCP: Event[Receive ConfReq+] State[ACKrcvd to Open]
*Apr 12 06:17:38.621: ppp11 LCP: I IDENTIFY [Open] id 4 len 18 magic 0x795C7CD1MSRASV5.20
*Apr 12 06:17:38.621: ppp11 LCP: I IDENTIFY [Open] id 5 len 24 magic 0x795C7CD1MSRAS-0-ADMIN-PC
*Apr 12 06:17:38.621: ppp11 LCP: I IDENTIFY [Open] id 6 len 24 magic 0x795C7CD1Z80f(U3G.cIwR<#!
*Apr 12 06:17:38.626: ppp11 PPP: Queue IPV6CP code[1] id[7]
*Apr 12 06:17:38.626: ppp11 PPP: Queue IPCP code[1] id[8]
*Apr 12 06:17:38.640: ppp11 PPP: Phase is FORWARDING, Attempting Forward
*Apr 12 06:17:38.640: ppp11 LCP: State is Open
*Apr 12 06:17:38.657: Vi3.1 PPP: Phase is ESTABLISHING, Finish LCP
*Apr 12 06:17:38.657: Vi3.1 PPP: Phase is UP
*Apr 12 06:17:38.657: Vi3.1 IPCP: Protocol configured, start CP. state[Initial]
*Apr 12 06:17:38.657: Vi3.1 IPCP: Event[OPEN] State[Initial to Starting]
*Apr 12 06:17:38.657: Vi3.1 IPCP: O CONFREQ [Starting] id 1 len 10
*Apr 12 06:17:38.657: Vi3.1 IPCP: Address 172.16.1.1 (0x0306AC100101)
*Apr 12 06:17:38.657: Vi3.1 IPCP: Event[UP] State[Starting to REQsent]
*Apr 12 06:17:38.657: Vi3.1 PPP: Process pending ncp packets
*Apr 12 06:17:38.657: Vi3.1 IPCP: Redirect packet to Vi3.1
*Apr 12 06:17:38.657: Vi3.1 IPCP: I CONFREQ [REQsent] id 8 len 34
*Apr 12 06:17:38.657: Vi3.1 IPCP: Address 0.0.0.0 (0x030600000000)
```

```

*Apr 12 06:17:38.657: Vi3.1 IPCP: PrimaryDNS 0.0.0.0 (0x810600000000)
*Apr 12 06:17:38.657: Vi3.1 IPCP: PrimaryWINS 0.0.0.0 (0x820600000000)
*Apr 12 06:17:38.657: Vi3.1 IPCP: SecondaryDNS 0.0.0.0 (0x830600000000)
*Apr 12 06:17:38.657: Vi3.1 IPCP: SecondaryWINS 0.0.0.0 (0x840600000000)
*Apr 12 06:17:38.657: Vi3.1 IPCP AUTHOR: Done. Her address 0.0.0.0, we want 0.0.0.0
*Apr 12 06:17:38.657: Vi3.1 IPCP: Pool returned 10.1.1.9
*Apr 12 06:17:38.657: Vi3.1 IPCP: O CONFREQ [REQsent] id 8 len 16
*Apr 12 06:17:38.658: Vi3.1 IPCP: PrimaryWINS 0.0.0.0 (0x820600000000)
*Apr 12 06:17:38.658: Vi3.1 IPCP: SecondaryWINS 0.0.0.0 (0x840600000000)
*Apr 12 06:17:38.658: Vi3.1 IPCP: Event[Receive ConfReq-] State[REQsent to REQsent]
*Apr 12 06:17:38.658: Vi3.1 IPV6CP: Redirect packet to Vi3.1
*Apr 12 06:17:38.658: Vi3.1 IPV6CP: I CONFREQ [UNKNOWN] id 7 len 14
*Apr 12 06:17:38.658: Vi3.1 IPV6CP: Interface-Id F0AA:D7A4:5750:D93E (0x010AF0AAD7A45750D93E)
*Apr 12 06:17:38.658: Vi3.1 LCP: O PROTREQ [Open] id 2 len 20 protocol IPV6CP
(0x0107000E010AF0AAD7A45750D93E)
*Apr 12 06:17:38.672: Vi3.1 IPCP: I CONFACK [REQsent] id 1 len 10
*Apr 12 06:17:38.672: Vi3.1 IPCP: Address 172.16.1.1 (0x0306AC100101)
*Apr 12 06:17:38.672: Vi3.1 IPCP: Event[Receive ConfAck] State[REQsent to ACKrcvd]
*Apr 12 06:17:38.672: Vi3.1 IPCP: I CONFREQ [ACKrcvd] id 9 len 22
*Apr 12 06:17:38.672: Vi3.1 IPCP: Address 0.0.0.0 (0x030600000000)
*Apr 12 06:17:38.672: Vi3.1 IPCP: PrimaryDNS 0.0.0.0 (0x810600000000)
*Apr 12 06:17:38.672: Vi3.1 IPCP: SecondaryDNS 0.0.0.0 (0x830600000000)
*Apr 12 06:17:38.672: Vi3.1 IPCP: O CONFNAK [ACKrcvd] id 9 len 22
*Apr 12 06:17:38.672: Vi3.1 IPCP: Address 10.1.1.9 (0x03060A010109)
*Apr 12 06:17:38.672: Vi3.1 IPCP: PrimaryDNS 4.2.2.1 (0x810604020201)
*Apr 12 06:17:38.672: Vi3.1 IPCP: SecondaryDNS 4.2.2.2 (0x830604020202)
*Apr 12 06:17:38.672: Vi3.1 IPCP: Event[Receive ConfReq-] State[ACKrcvd to ACKrcvd]
*Apr 12 06:17:38.747: Vi3.1 IPCP: I CONFREQ [ACKrcvd] id 10 len 22
*Apr 12 06:17:38.747: Vi3.1 IPCP: Address 10.1.1.9 (0x03060A010109)
*Apr 12 06:17:38.747: Vi3.1 IPCP: PrimaryDNS 4.2.2.1 (0x810604020201)
*Apr 12 06:17:38.747: Vi3.1 IPCP: SecondaryDNS 4.2.2.2 (0x830604020202)
*Apr 12 06:17:38.747: Vi3.1 IPCP: O CONFACK [ACKrcvd] id 10 len 22
*Apr 12 06:17:38.748: Vi3.1 IPCP: Address 10.1.1.9 (0x03060A010109)
*Apr 12 06:17:38.748: Vi3.1 IPCP: PrimaryDNS 4.2.2.1 (0x810604020201)
*Apr 12 06:17:38.748: Vi3.1 IPCP: SecondaryDNS 4.2.2.2 (0x830604020202)
*Apr 12 06:17:38.748: Vi3.1 IPCP: Event[Receive ConfReq+] State[ACKrcvd to Open]
*Apr 12 06:17:38.768: Vi3.1 IPCP: State is Open
*Apr 12 06:17:38.769: Vi3.1 Added to neighbor route AVL tree: topoid 0, address 10.1.1.9
*Apr 12 06:17:38.769: Vi3.1 IPCP: Install route to 10.1.1.9

```

```
Aggregator#show caller ip
```

Line	User	IP Address	Local Number	Remote Number	<->
Vi3.1	-	10.1.1.9	-	-	in

```
Aggregator#show ip interface brief | exclude un
```

Interface	IP-Address	OK?	Method	Status	Protocol
GigabitEthernet0/0/1	192.168.1.1	YES	manual	up	up
Loopback100	172.16.1.1	YES	manual	up	up

Étape 4. Vérifiez si l'ordinateur Windows peut atteindre le réseau distant derrière Aggregator (dans ce cas, l'interface de bouclage 100)

```
C:\Users\admin>ping 172.16.1.1

Pinging 172.16.1.1 with 32 bytes of data:
Reply from 172.16.1.1: bytes=32 time=1ms TTL=255
Reply from 172.16.1.1: bytes=32 time<1ms TTL=255
Reply from 172.16.1.1: bytes=32 time<1ms TTL=255
Reply from 172.16.1.1: bytes=32 time<1ms TTL=255

Ping statistics for 172.16.1.1:
    Packets: Sent = 4, Received = 4, Lost = 0 (0% loss),
    Approximate round trip times in milli-seconds:
        Minimum = 0ms, Maximum = 1ms, Average = 0ms
```

Dépannage

Il n'existe actuellement aucune information de dépannage spécifique pour cette configuration.

Informations connexes

- [Présentation de VPDN](#)
- [TSupport technique et documentation - Cisco Systems](#)