

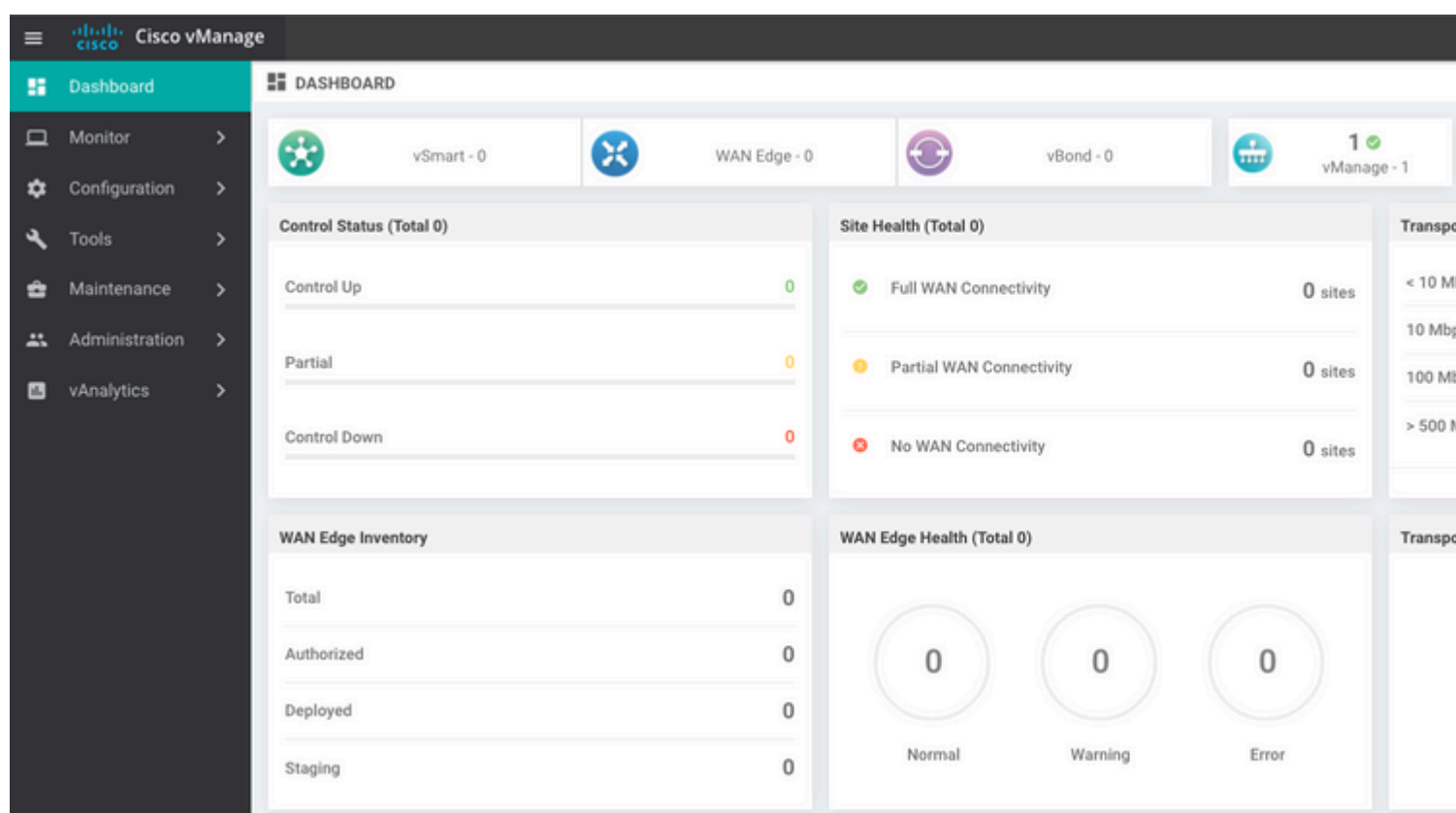


# Recuperar vManage

Simule un desastre mediante un restablecimiento de vManage mediante el comando:

```
vManage_rcdn01# request software reset
```

Ahora que tiene un vManage nuevo que se parece al que se muestra, es recomendable adherirse al proceso de recuperación en la secuencia correcta antes de restaurar la copia de seguridad.



## Paso 1. Configuración mínima en vManage

```
system
 host-name          vManage_rcdn01
 system-ip          xx.xx.xx.xx
 site-id            100
 organization-name  ****.cisco
 vbond vbond.list
 !
 !
 vpn 0
 host vbond.list ip 10.2.3.4 10.2.3.5
 interface eth0
```

```
ip address 10.1.3.8/24
tunnel-interface
no shutdown
!
ip route 0.0.0.0/0 10.1.3.1
!
vpn 512
interface eth1
ip address 10.11.3.8/24
no shutdown
!
ip route 0.0.0.0/0 10.1.3.1
!
```

## Paso 2. Copiar configuración de copia de seguridad y certificado raíz

<#root>

```
vManage_rcdn01:~$ scp am****@xx.xx.xx.xx://home/ftpuser/ftp/am****/05_08_20_configdb.tar.gz .
am****@xx.xx.xx.xx's password:
05_08_20_configdb.tar.gz                                100% 484KB 76.6MB/s 00:00
```

### Verify

```
vManage_rcdn01:~$ ls -lh
total 492K
-rw-r--r-- 1 admin admin 394 May 8 15:20 archive_id_rsa.pub
-rwxr-xr-x 1 admin admin 485K May 8 15:39 05_08_20_configdb.tar.gz
```

### Copy root certificate from other controller:

```
vManage_rcdn01:~$ scp admin@vbond://home/admin/root.crt .
viptela 18.4.4
admin@vbond's password:
root.crt                                                100% 1380 2.8MB/s 00:00
```

## Paso 3. Instalar certificado raíz

```
vManage_rcdn01# request root-cert-chain install /home/admin/root.crt
Uploading root-ca-cert-chain via VPN 0
Copying ... /home/admin/root.crt via VPN 0
Updating the root certificate chain..
Successfully installed the root certificate chain
```

## Paso 4. Actualizar información básica

Desplácese hasta **Administration > Settings** y configure la información básica de la IP de vBond, el nombre de la organización y el certificado.

The screenshot shows the Cisco vManage Administration | SETTINGS page. The left sidebar contains navigation options: Dashboard, Monitor, Configuration, Tools, Maintenance, Administration (selected), Settings, Manage Users, Cluster Management, Integration Management, and vAnalytics. The main content area displays the following settings:

Organization Name	amanagment.cisco
vBond	vbond.amanagment : 12346
Email Notifications	Disabled
Controller Certificate Authorization	Enterprise
WAN Edge Cloud Certificate Authorization	Automated
Web Server Certificate	12 Jul 2024 5:30:30 PM
Enforce Software Version (ZTP)	
Banner	Disabled
Reverse Proxy	Disabled
Statistics Setting	

## Paso 5. Instalar certificado de vManage

Use el comando `root.crt` que se instala en el paso 2.

The screenshot shows the Cisco vManage CONFIGURATION | CERTIFICATES page. The left sidebar contains navigation options: Dashboard, Monitor, Configuration (selected), Devices, Certificates, Network Design, Templates, Policies, Security, Cloud onRamp for SaaS, Cloud onRamp, Network Hub, Tools, Maintenance, Administration, and vAnalytics. The main content area displays the following table:

Operation Status	Controller Type	Hostname	System IP	Site ID	Certificate Serial	Expiration Date
CSR Generated	vManage	vManage_rcrdn01	1.11.11.11	100	No certificate installed	-

A modal window titled 'CSR' is open, displaying the IP Address: 1.11.11.11 and a download button for the CSR file. The modal also contains a 'Close' button and a 'Download' link.

**Cisco vManage**

- Dashboard
- Monitor
- Configuration**
- Devices
- Certificates**
- Network Design
- Templates
- Policies
- Security
- Cloud onRamp for SaaS
- Cloud onRamp
- Network Hub
- Tools
- Maintenance
- Administration
- vAnalytics

**CONFIGURATION | CERTIFICATES**

WAN Edge List    **Controllers**

Send to vBond

No file chosen

Search Options

Operation Status	Controller Type	Hostname	System IP	Site ID	Certificate Serial	Expiration Date
CSR Generated	vManage	vManage_rcdn01	1.11.11.11	100	No certificate installed	-

**Install Certificate** ✕

Certificate Text Select a file

```

---BEGIN CERTIFICATE---
MIIEQjCCAyqgAwIBAgITwjqFHbasy@wDQYJKoZIhvcNAQELBQAwbDElMAkGA1UE
BhMCVVMxMzA1BgNVBAGTAIRYMQ0wCwYDVQQHEwRSQ0R0MRowFQYDVQQKEw5hbWF1
Z3VzdC5jaXNjbzEXMBUGA1UECxA0YV1hdWd1c3QyY2IzY28xMzA1MDg4NjE0MDA1
b3RDQTAeFw0yMDA1MDg4NjE0MDA1MDg4NjE0MDA1MDg4NjE0MDA1MDg4NjE0MDA1
EwJVUzETMBEGA1UECBMKQ2FsaWZvcmluZS55TERMA8GA1UEBmMlU2FuZEpvc2Ux
BgNVBAsTDmFYXVndXN0LmNpc2NvMRQwEgYDVQQKEw12SVB0ZWxhIEUyZDMEEG
A1UEAxM6dm1hbmFnZS05MjMmMmU3Ny1jMDVjLTQ2MmE1YTcxNy01ZjA1MzIzMW01
MmYtMjM0ZWxhLmNvbTElMCAGCSqGSIb3DQEJARYTc3VwcG9yYEBzX0Z0ZWxh
LmNvbTCCASlwdQYJKoZIhvcNAQEBBQADggEPADCCAQoCggEBBAKeHM8FhKmbqX0E
tZnLicP5bGjZTTBihm+kXwWynupv/JTdsy4AEx28gamKl/+d7dNg9PrfAsBc
5rVoP6kyeT2MGX0Fdot1MNVy8asLncJhIRarEn6mnd5Y0H5Nz6jPS/Wx2IAnIZB
Z/W46TM7kyqD11tus4R1vj3H7ASkeAHucVZ4NmPoAJSh1Uzx9pIPB1oG2bwmErJP
17zpn8WBVhqt2r0z0Az3Jb246IPd7d8sm8XcBkF51FY+nXepDhrQz3XZUcTogm/

```

Install
Cancel

**Cisco vManage**

- Dashboard
- Monitor
- Configuration**
- Devices
- Certificates
- Network Design
- Templates
- Policies
- Security
- Cloud onRamp for SaaS
- Cloud onRamp
- Network Hub
- Tools
- Maintenance
- Administration

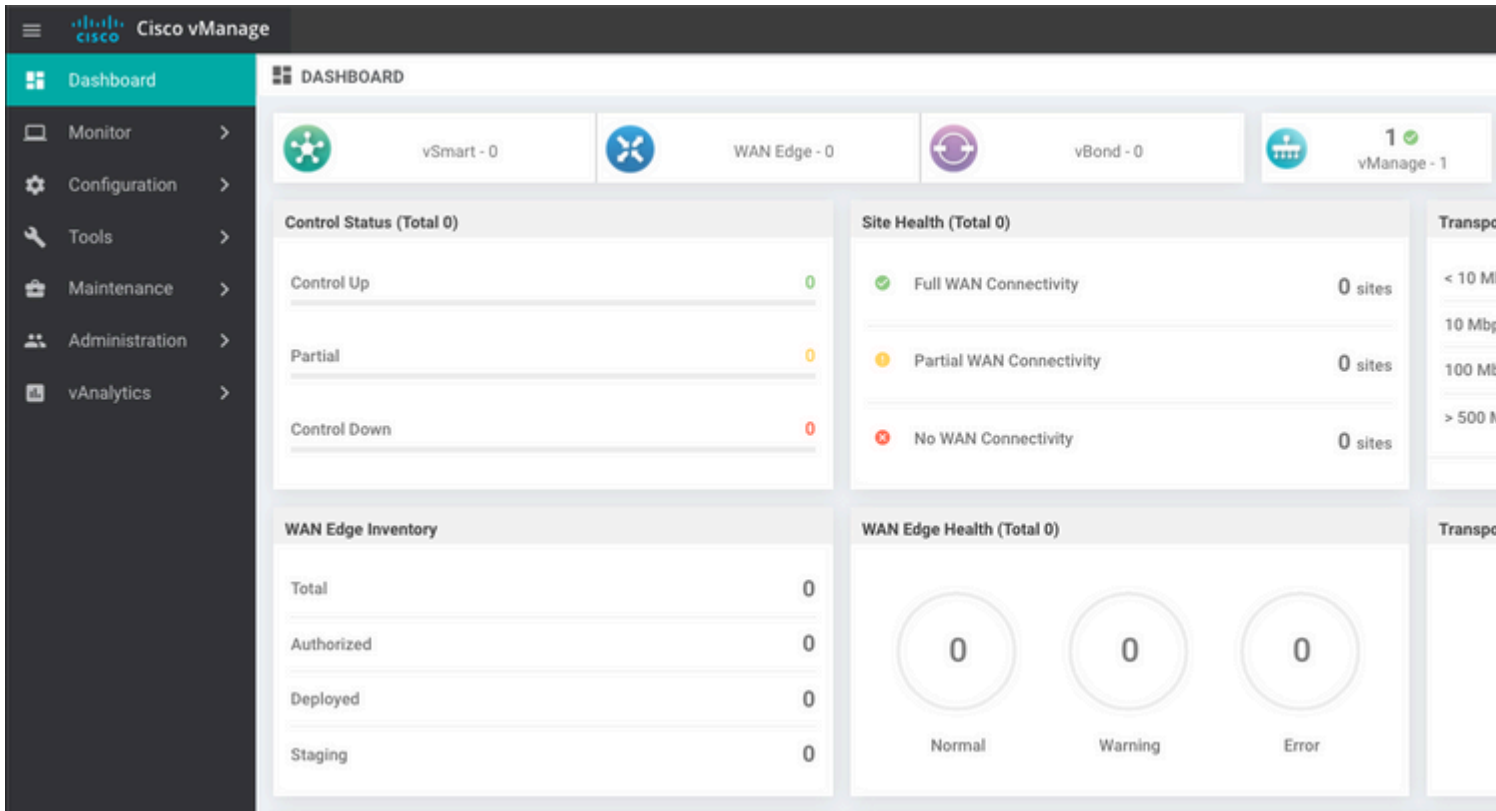
**TASK VIEW**

**Install Certificate**

Total Task: 1 | Success: 1

Search Options

Status	Message	Device Type	Device IP
Success	Successfully synced vEdge list on vManage-9...	vManage	92302e77-c05c-462a-a717-5f013b31d52f
[8-May-2020 16:15:06 UTC]	Install Certificate, on device 92302e77-c05c-462a-a717-5f013b31d52f, started by user "admin" from IP address "169.		
[8-May-2020 16:15:06 UTC]	Pushing serial list to vManage-92302e77-c05c-462a-a717-5f013b31d52f (vManage_rcdn01)		
[8-May-2020 16:15:06 UTC]	Started processing serial list file on vManage-92302e77-c05c-462a-a717-5f013b31d52f (vManage_rcdn01)		
[8-May-2020 16:15:07 UTC]	Completed processing serial list file on vManage-92302e77-c05c-462a-a717-5f013b31d52f (vManage_rcdn01)		
[8-May-2020 16:15:07 UTC]	Done - Push vSmart List for vManage-92302e77-c05c-462a-a717-5f013b31d52f (vManage_rcdn01)		
[8-May-2020 16:15:07 UTC]	Pushed serial list to vManage-92302e77-c05c-462a-a717-5f013b31d52f (vManage_rcdn01)		
[8-May-2020 16:15:07 UTC]	Updated controllers with new certificate serial number of vManage-92302e77-c05c-462a-a717-5f013b31d52f		



## Paso 6. Restaurar La Base De Datos

<#root>

```
vManage_rcdn01# request nms configuration-db restore path /home/admin/05_08_20_configdb.tar.gz
```

```
Configuration database is running in a standalone mode
0 [main] INFO com.viptela.vmanage.server.deployment.cluster.ClusterConfigurationFileHandler - Trying to
4 [main] INFO com.viptela.vmanage.server.deployment.cluster.ClusterConfigurationFileHandler - Working o
Successfully saved cluster configuration for localhost
Starting DB backup from: localhost
Creating directory: local
cmd to backup db: sh /usr/bin/vconfd_script_nms_neo4jwrapper.sh backup localhost /opt/data/backup/local
Finished DB backup from: localhost
Stopping NMS application server on localhost
Stopping NMS configuration database on localhost
Reseting NMS configuration database on localhost
Restoring from DB backup: /opt/data/backup/staging/graph.db-backup
cmd to restore db: sh /usr/bin/vconfd_script_nms_neo4jwrapper.sh restore /opt/data/backup/staging/graph
Successfully restored DB backup: /opt/data/backup/staging/graph.db-backup
Starting NMS configuration database on localhost
Waiting for 10s before starting other instances...
Polling neo4j at: localhost
NMS configuration database on localhost has started.
Updating DB with the saved cluster configuration data
Successfully reinserted cluster meta information
Starting NMS application-server on localhost
Waiting for 120s for the instance to start...
Removed old database directory: /opt/data/backup/local/graph.db-backup
Successfully restored database
```

Este paso toma más tiempo y depende de la copia de seguridad.

Puede verificar el proceso mediante `tail` los registros en vShell.

```
<#root>
```

```
vManage_rcdn01:~$
```

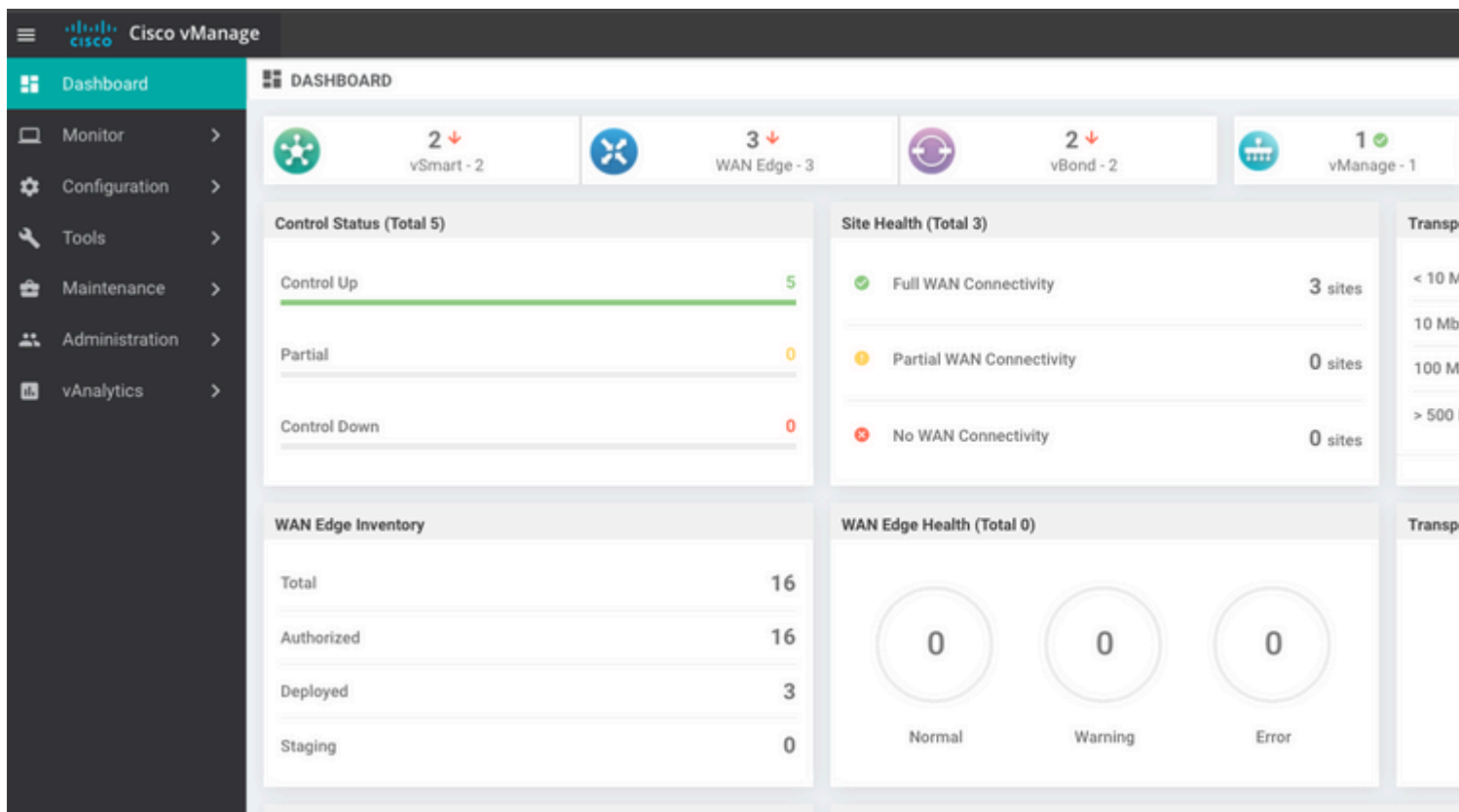
```
tail -fq /var/log/nms/vmanage-server.log /var/log/nms/neo4j-out.log
```

## Paso 7. Comprobar servicios

```
vManage_rcdn01# request nms all status
```

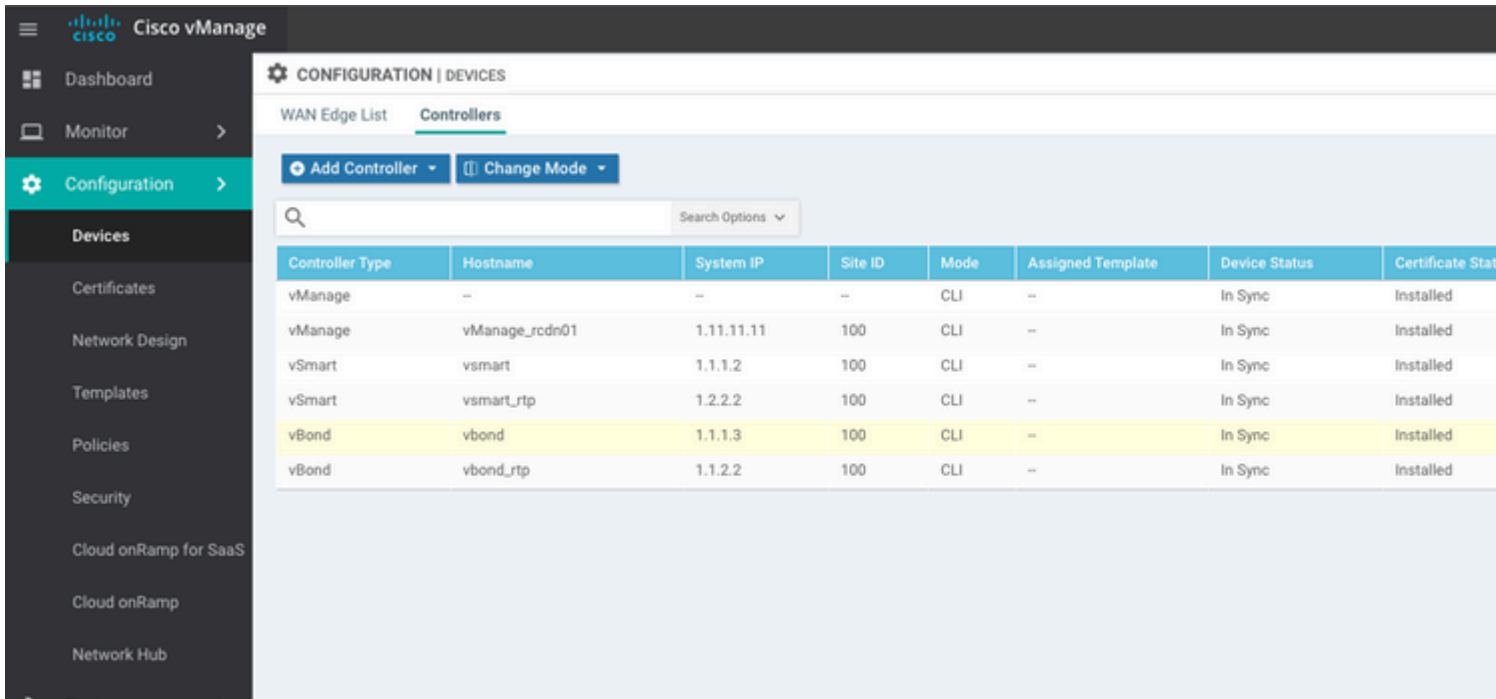
## Paso 8. Reautenticar controladores

Actualmente, puede observar que todas las políticas, plantillas y configuraciones se han cargado en vManage, pero todos los controladores están inactivos.

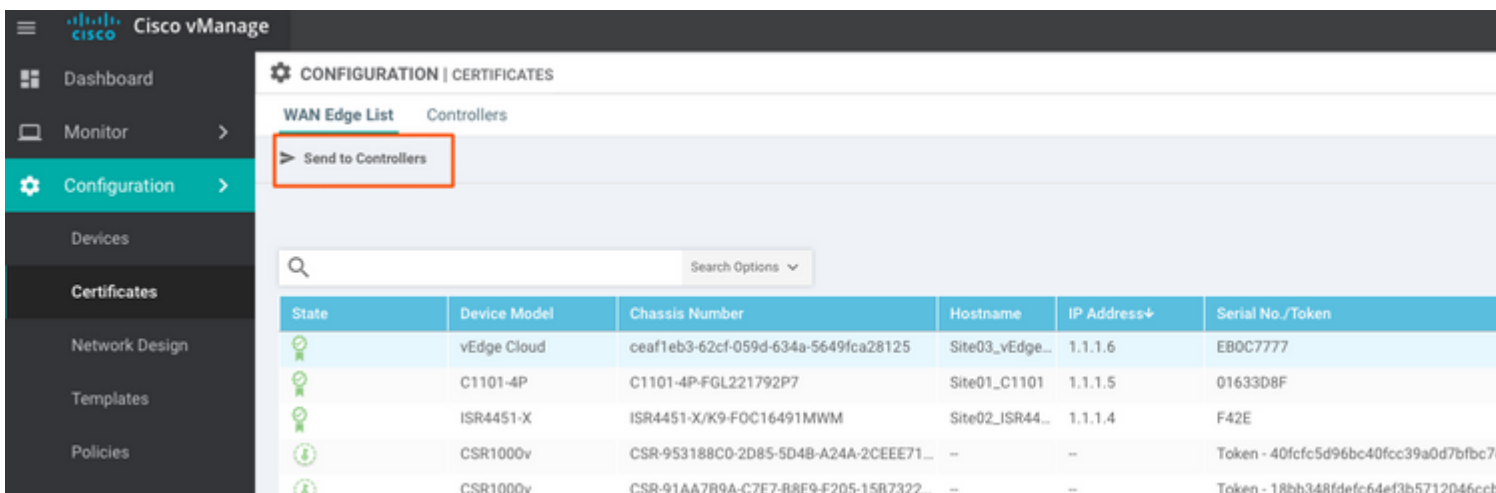
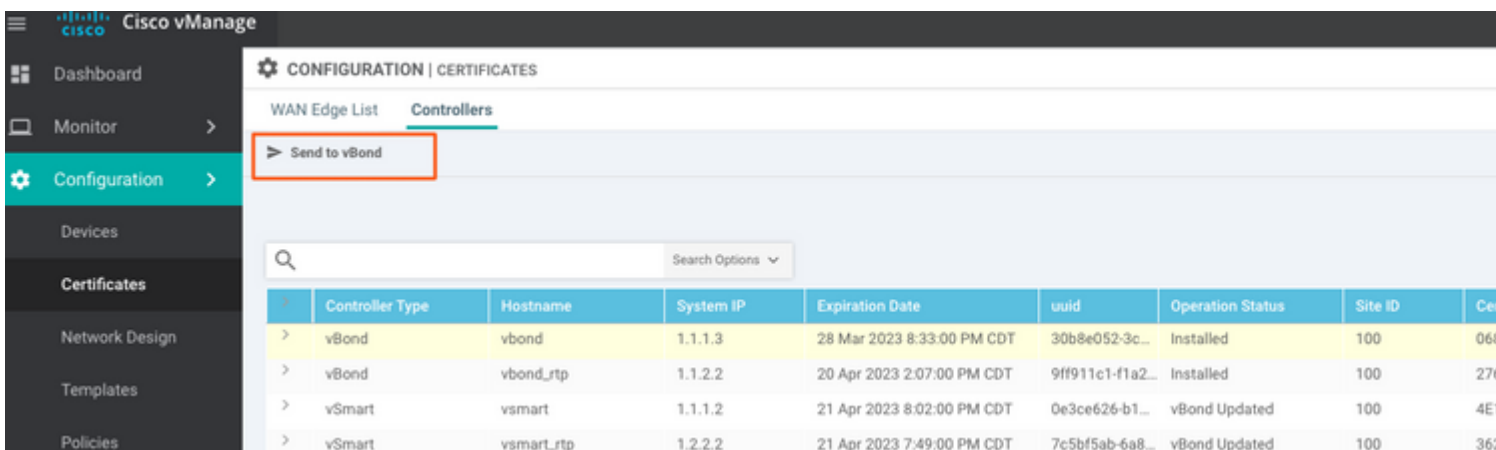


Debe volver a autenticar todos los controladores.

Desplácese hasta `Configuration > Devices`. Edite cada controlador y rellene la dirección IP de administración (la dirección IP de administración se puede encontrar en la configuración local) nombre de usuario y contraseña.



## Paso 9. Enviar actualizaciones a controladores



Ahora, verá que todos los dispositivos se pueden gestionar mediante vManage.



**Cisco vManage**

**DASHBOARD**

2 ↑ vSmart - 2    3 ↑ WAN Edge - 3    2 ↑ vBond - 2    1 vManage - 1

**Control Status (Total 4)**

Control Up	4
Partial	0
Control Down	0

**Site Health (Total 2)**

Full WAN Connectivity	2 sites
Partial WAN Connectivity	0 sites
No WAN Connectivity	0 sites

**WAN Edge Inventory**

Total	15
Authorized	15
Deployed	3
Staging	0

**WAN Edge Health (Total 2)**

Normal	2
Warning	0
Error	0

**Top Applications**

No data to display

**Application-Aware Routing**

Tunnel Endpoints	Avg. Latency (ms)	Avg. ...
Site02_ISR4451:default-Site03_vEdge_Cloud...	50.5	0.0
Site01_C1101:default-Site02_ISR4451:default	32.167	0.0
Site02_ISR4451:default-Site01_C1101:default	32	0
Site01_C1101:default-Site03_vEdge_Cloud.d...	25.917	0

**Cisco vManage**

**CONFIGURATION | TEMPLATES**

Device    Feature

**Add Template**

Template Type: Non-Default    Search Options

Name	Description	Type	Device Model	Device Templates	Devices Attached
vEdge_VPN_0	Default Transport VPN tem...	WAN Edge VPN	C1111-4PLTEEA C1117-4P...	0	0
Default_AAA	Default AAA template settin...	AAA	C1111-4PLTEEA C1117-4P...	1	1
cEdge_VPN_0	Default Transport VPN tem...	WAN Edge VPN	C1111-4PLTEEA C1117-4P...	1	1
vEdge_VPN_512_Interface	VPN 512 interface config	WAN Edge Interface	C1111-4PLTEEA C1117-4P...	0	0
vEdge_VPN_0_Interface	VPN 0 interface config	WAN Edge Interface	C1111-4PLTEEA C1117-4P...	0	0
Default_Banner	Banner for amaugust.cisco	Banner	ISR4451-X C1101-4P vEd...	1	1
vEdge_VPN_512	VPN 512 add default route	WAN Edge VPN	C1111-4PLTEEA C1117-4P...	0	0
cEdge_VPN_0_Interface	VPN 0 interface config	WAN Edge Interface	C1111-4PLTEEA C1117-4P...	1	1
cEdge_VPN_512	VPN 512 add default route	WAN Edge VPN	C1111-4PLTEEA C1117-4P...	1	1
cEdge_VPN_512_Interface	VPN 512 interface config	WAN Edge Interface	C1111-4PLTEEA C1117-4P...	1	1

## Acerca de esta traducción

Cisco ha traducido este documento combinando la traducción automática y los recursos humanos a fin de ofrecer a nuestros usuarios en todo el mundo contenido en su propio idioma.

Tenga en cuenta que incluso la mejor traducción automática podría no ser tan precisa como la proporcionada por un traductor profesional.

Cisco Systems, Inc. no asume ninguna responsabilidad por la precisión de estas traducciones y recomienda remitirse siempre al documento original escrito en inglés (insertar vínculo URL).