



CHAPTER 41

Configuring VRF-lite

Virtual Private Networks (VPNs) provide a secure way for customers to share bandwidth over an ISP backbone network. A VPN is a collection of sites sharing a common routing table. A customer site is connected to the service provider network by one or more interfaces, and the service provider associates each interface with a VPN routing table. A VPN routing table is called a VPN routing/forwarding (VRF) table.

With the VRF-lite feature, the Catalyst 4500 series switch supports multiple VPN routing/forwarding instances in customer edge devices. (VRF-lite is also termed multi-VRF CE, or multi-VRF Customer Edge Device). VRF-lite allows a service provider to support two or more VPNs with overlapping IP addresses using one interface.

This document addresses both IPv4 and IPv6 VRF-lite.



Note

Starting with Cisco IOS Release 12.2(52)SG, the Catalyst 4500 switch supports VRF-lite NSF support with routing protocols OSPF/EIGRP/BGP.



Note

The switch does not use Multiprotocol Label Switching (MPLS) to support VPNs. For information about MPLS VRF, refer to the *Cisco IOS Switching Services Configuration Guide* at:

http://www.cisco.com/en/US/docs/ios/mpls/configuration/guide/mp_vpn_ipv4_ipv6_ps6922_TSD_Products_Configuration_Guide_Chapter.html

This chapter includes these topics:

- [About VRF-lite, page 41-2](#)
- [VRF-lite Configuration Guidelines, page 41-3](#)
- [Configuring VRF-lite for IPv4, page 41-5](#)
- [Configuring VRF-lite for IPv6, page 41-15](#)
- [VPN Co-existence Between IPv4 and IPv6, page 41-28](#)
- [Migrating from the Old to New CLI Scheme, page 41-28](#)



Note

For complete syntax and usage information for the switch commands used in this chapter, see the *Cisco Catalyst 4500 Series Switch Command Reference* and related publications at this location:

<http://www.cisco.com/en/US/products/hw/switches/ps4324/index.html>

If a command is not in the *Catalyst 4500 Series Switch Command Reference*, you can locate it in the Cisco IOS library. See related publications at this location:
<http://www.cisco.com/en/US/products/ps6350/index.html>

About VRF-lite

VRF-lite is a feature that enables a service provider to support two or more VPNs, where IP addresses can be overlapped among the VPNs. VRF-lite uses input interfaces to distinguish routes for different VPNs and forms virtual packet-forwarding tables by associating one or more Layer 3 interfaces with each VRF. Interfaces in a VRF can be either physical, such as Ethernet ports, or logical, such as VLAN SVIs, but a Layer 3 interface cannot belong to more than one VRF at any time.

**Note**

VRF-lite interfaces must be Layer 3 interfaces.

VRF-lite includes these devices:

- Customer edge (CE) devices provide customer access to the service provider network over a data link to one or more provider edge routers. The CE device advertises the site's local routes to the provider edge router and learns the remote VPN routes from it. A Catalyst 4500 series switch can be a CE.
- Provider edge (PE) routers exchange routing information with CE devices by using static routing or a routing protocol such as BGP, RIPv1, or RIPv2.

The PE is only required to maintain VPN routes for those VPNs to which it is directly attached, eliminating the need for the PE to maintain all of the service provider VPN routes. Each PE router maintains a VRF for each of its directly connected sites. Multiple interfaces on a PE router can be associated with a single VRF if all of these sites participate in the same VPN. Each VPN is mapped to a specified VRF. After learning local VPN routes from CEs, a PE router exchanges VPN routing information with other PE routers by using internal BGP (iBGP).

- Provider routers (or core routers) are any routers in the service provider network that do not attach to CE devices.

With VRF-lite, multiple customers can share one CE, and only one physical link is used between the CE and the PE. The shared CE maintains separate VRF tables for each customer and switches or routes packets for each customer based on its own routing table. VRF-lite extends limited PE functionality to a CE device, giving it the ability to maintain separate VRF tables to extend the privacy and security of a VPN to the branch office.

Figure 41-1 shows a configuration where each Catalyst 4500 series switch acts as multiple virtual CEs. Because VRF-lite is a Layer 3 feature, each interface in a VRF must be a Layer 3 interface.

Figure 41-1 Catalyst 4500 Series Switches Acting as Multiple Virtual CEs

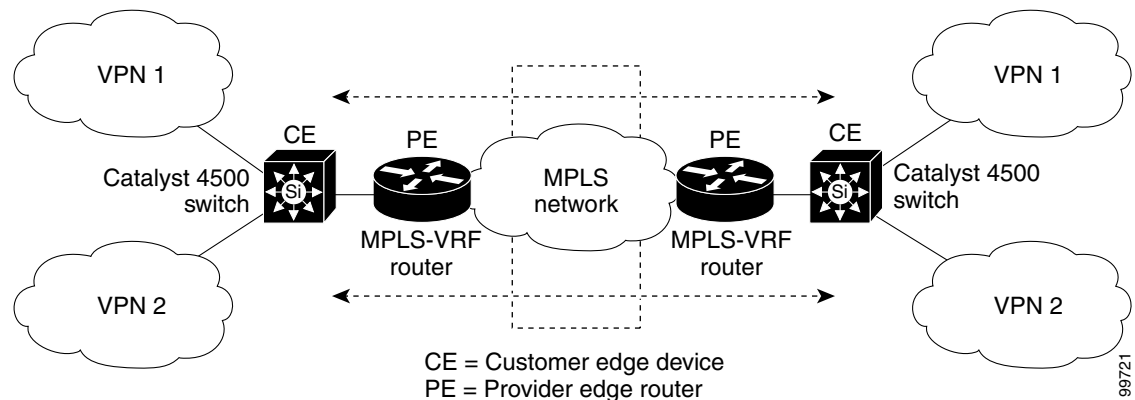


Figure 41-1 illustrates the packet-forwarding process in a VRF-lite CE-enabled network.

- When the CE receives a packet from a VPN, it looks up the routing table based on the input interface. When a route is found, the CE forwards the packet to the PE.
- When the ingress PE receives a packet from the CE, it performs a VRF lookup. When a route is found, the router adds a corresponding MPLS label to the packet and sends it to the MPLS network.
- When an egress PE receives a packet from the network, it strips the label and uses the label to identify the correct VPN routing table. The egress PE then performs the normal route lookup. When a route is found, it forwards the packet to the correct adjacency.
- When a CE receives a packet from an egress PE, it uses the input interface to look up the correct VPN routing table. If a route is found, the CE forwards the packet within the VPN.

To configure VRF, create a VRF table and specify the Layer 3 interface associated with the VRF. You then configure the routing protocols in the VPN and between the CE and the PE. BGP is the preferred routing protocol used to distribute VPN routing information across the providers' backbone. The VRF-lite network has three major components:

- VPN route target communities—Lists all other members of a VPN community. You need to configure VPN route targets for each VPN community member.
- Multiprotocol BGP peering of VPN community PE routers—Propagates VRF reachability information to all members of a VPN community. You need to configure BGP peering in all PE routers within a VPN community.
- VPN forwarding—Transports all traffic between all VPN community members across a VPN service-provider network.

VRF-lite Configuration Guidelines

IPv4 and IPv6

- A switch with VRF-lite is shared by multiple customers, and all customers have their own routing tables.
- Because customers use different VRF tables, you can reuse the same IP addresses. Overlapped IP addresses are allowed in different VPNs.

- VRF-lite lets multiple customers share the same physical link between the PE and the CE. Trunk ports with multiple VLANs separate packets among customers. All customers have their own VLANs.
- VRF-lite does not support all MPLS-VRF functionality: label exchange, LDP adjacency, or labeled packets.
- For the PE router, there is no difference between using VRF-lite or using multiple CEs. In [Figure 41-1](#), multiple virtual Layer 3 interfaces are connected to the VRF-lite device.
- The Catalyst 4500 series switch supports configuring VRF by using physical ports, VLAN SVIs, or a combination of both. You can connect SVIs through an access port or a trunk port.
- A customer can use multiple VLANs as long as they do not overlap with those of other customers. A customer's VLANs are mapped to a specific routing table ID that is used to identify the appropriate routing tables stored on the switch.
- The Layer 3 TCAM resource is shared between all VRFs. To ensure that any one VRF has sufficient CAM space, use the **maximum routes** command.
- A Catalyst 4500 series switch using VRF can support one global network and up to 64 VRFs. The total number of routes supported is limited by the size of the TCAM.
- A single VRF can be configured for both IPv4 and IPv6.
- PBR and VRF cannot be configured on the same interface. Similarly, WCCP, Etherchannel and MEC cannot be configured on the same interface with VRF.
- If an incoming packet's destination address is not found in the vrf table, the packet is dropped. Also, if insufficient TCAM space exists for a VRF route, hardware switching for that VRF is disabled and the corresponding data packets are sent to software for processing.

IPv4 Specific

- You can use most routing protocols (BGP, OSPF, EIGRP, RIP and static routing) between the CE and the PE. However, we recommend using external BGP (EBGP) for these reasons:
 - BGP does not require multiple algorithms to communicate with multiple CEs.
 - BGP is designed for passing routing information between systems run by different administrations.
 - BGP makes simplifies passing attributes of the routes to the CE.
- VRF-lite does not support IGRP and ISIS.
- Beginning with Cisco IOS Release 12.2(50)SG, Multicast and VRF can be configured together on a Layer 3 interface.
- The Catalyst 4500 series switch supports all the PIM protocols (PIM-SM, PIM-DM, PIM-SSM, PIM BiDIR).
- The **capability vrf-lite** subcommand under **router ospf** should be used when configuring OSPF as the routing protocol between the PE and the CE.

IPv6 specific

- VRF-aware OSPFv3, BGPv6, EIGRPv6, and IPv6 static routing are supported.
- VRF aware ISISv6, RIPng, IPv6 Multicast Routing(MVRF), and PIMv6 are not supported.
- VRF-aware IPv6 route applications include: ping, telnet, ssh, tftp, ftp and traceroute. (This list does not include the Mgt interface, which is handled differently even though you can configure both IPv4 or IPv6 VRF under it.)

Configuring VRF-lite for IPv4

Configuring VRFs

To configure one or more VRFs, perform this task:

| | Command | Purpose |
|---------|---|--|
| Step 1 | Switch# configure terminal | Enters global configuration mode. |
| Step 2 | Switch(config)# ip routing | Enables IP routing. |
| Step 3 | Switch(config)# ip vrf vrf-name | Names the VRF and enters VRF configuration mode. |
| Step 4 | Switch(config-vrf)# rd route-distinguisher | Creates a VRF table by specifying a route distinguisher. Enter either an AS number and an arbitrary number (xxx:y) or an IP address and arbitrary number (A.B.C.D:y). |
| Step 5 | Switch(config-vrf)# route-target {export import both} route-target-ext-community | Creates a list of import, export, or import and export route target communities for the specified VRF. Enter either an AS system number and an arbitrary number (xxx:y) or an IP address and an arbitrary number (A.B.C.D:y). Note This command is effective only if BGP is running. |
| Step 6 | Switch(config-vrf)# import map route-map | (Optional) Associates a route map with the VRF. |
| Step 7 | Switch(config-vrf)# interface interface-id | Enters interface configuration mode and specify the Layer 3 interface to be associated with the VRF. The interface can be a routed port or SVI. |
| Step 8 | Switch(config-if)# ip vrf forwarding vrf-name | Associates the VRF with the Layer 3 interface. |
| Step 9 | Switch(config-if)# end | Returns to privileged EXEC mode. |
| Step 10 | Switch# show ip vrf [brief detail interfaces] [vrf-name] | Verifies the configuration. Displays information about the configured VRFs. |
| Step 11 | Switch# copy running-config startup-config | (Optional) Saves your entries in the configuration file. |



Note

For complete syntax and usage information for the following commands, see the switch command reference for this release and see the *Cisco IOS Switching Services Command Reference* at: http://www.cisco.com/en/US/docs/ios/ipswitch/command/reference/isw_book.html

Use the **no ip vrf vrf-name** global configuration command to delete a VRF and to remove all interfaces from it. Use the **no ip vrf forwarding** interface configuration command to remove an interface from the VRF.

Configuring VRF-Aware Services

IP services can be configured on global interfaces and within the global routing instance. IP services are enhanced to run on multiple routing instances; they are VRF-aware. Any configured VRF in the system can be specified for a VRF-aware service.

VRF-aware services are implemented in platform-independent modules. VRF provides multiple routing instances in Cisco IOS. Each platform has its own limit on the number of VRFs it supports.

VRF-aware services have the following characteristics:

- The user can ping a host in a user-specified VRF.
- ARP entries are learned in separate VRFs. The user can display Address Resolution Protocol (ARP) entries for specific VRFs.

Configuring the User Interface for ARP

To configure VRF-aware services for ARP, perform this task:

| Command | Purpose |
|--|---|
| Switch# show ip arp vrf <i>vrf-name</i> | Displays the ARP table (static and dynamic entries) in the specified VRF. |
| Switch(config)# arp vrf <i>vrf-name</i> <i>ip-address mac-address ARPA</i> | Creates a static ARP entry in the specified VRF. |

Configuring Per-VRF for TACACS+ Servers

The per-VRF for TACACS+ servers feature enables you to configure per-virtual route forwarding (per-VRF) authentication, authorization, and accounting (AAA) on TACACS+ servers.

Before configuring per-VRF on a TACACS+ server, you must have configured AAA and a server group.

You can create the VRF routing table (shown in Steps 3 and 4) and configure the interface (Steps 6, 7, and 8). The actual configuration of per-VRF on a TACACS+ server is done in Steps 10 through 13.

| | Command or Action | Purpose |
|---------------|--|---|
| Step 1 | Switch> enable | Enables privileged EXEC mode. Enter your password if prompted. |
| Step 2 | Switch# configure terminal | Enters global configuration mode. |
| Step 3 | Switch(config)# ip vrf <i>vrf-name</i> | Configures a VRF table and enters VRF configuration mode. |
| Step 4 | Switch (config-vrf)# rd <i>route-distinguisher</i> | Creates routing and forwarding tables for a VRF instance. |
| Step 5 | Switch (config-vrf)# exit | Exits VRF configuration mode. |
| Step 6 | Switch (config)# interface <i>interface-name</i> | Configures an interface and enters interface configuration mode. |
| Step 7 | Switch (config-if)# ip vrf forwarding <i>vrf-name</i> | Configures a VRF for the interface. |
| Step 8 | Switch (config-if)# ip address <i>ip-address mask</i> [secondary] | Sets a primary or secondary IP address for an interface. |
| Step 9 | Switch (config-if)# exit | Exits interface configuration mode. |

| | Command or Action | Purpose |
|---------|--|--|
| Step 10 | <code>aaa group server tacacs+ group-name</code> Example: Switch (config)# <code>aaa group server tacacs+ tacacs1</code> | Groups different TACACS+ server hosts into distinct lists and distinct methods and enters server-group configuration mode. |
| Step 11 | <code>server-private {ip-address name} [nat] [single-connection] [port port-number] [timeout seconds] [key [0 7] string]</code> Example: Switch (config-sg-tacacs+)# <code>server-private 10.1.1.1 port 19 key cisco</code> | Configures the IP address of the private TACACS+ server for the group server. |
| Step 12 | Switch (config-sg-tacacs+)# <code>ip vrf forwarding vrf-name</code> | Configures the VRF reference of a AAA TACACS+ server group. |
| Step 13 | Switch (config-sg-tacacs+)# <code>ip tacacs source-interface subinterface-name</code> | Uses the IP address of a specified interface for all outgoing TACACS+ packets. |
| Step 14 | Switch (config-sg-tacacs)# <code>exit</code> | Exits server-group configuration mode. |

The following example lists all the steps to configure per-VRF TACACS+:

```
Switch> enable
Switch# configure terminal
Switch (config)# ip vrf cisco
Switch (config-vrf)# rd 100:1
Switch (config-vrf)# exit
Switch (config)# interface Loopback0
Switch (config-if)# ip vrf forwarding cisco
Switch (config-if)# ip address 10.0.0.2 255.0.0.0
Switch (config-if)# exit
Switch (config-sg-tacacs+)# ip vrf forwarding cisco
Switch (config-sg-tacacs+)# ip tacacs source-interface Loopback0
Switch (config-sg-tacacs)# exit
```

For more information about configuring per-VRF for TACACS+ server,

http://www.cisco.com/en/US/docs/ios/sec_user_services/configuration/guide/sec_vrf_tacas_svrs.pdf

Configuring Multicast VRFs

To configure multicast within a VRF table, perform this task:

| | Command | Purpose |
|--------|--|--|
| Step 1 | Switch# <code>configure terminal</code> | Enters global configuration mode. |
| Step 2 | Switch(config)# <code>ip routing</code> | Enables IP routing. |
| Step 3 | Switch(config)# <code>ip vrf vrf-name</code> | Names the VRF and enters VRF configuration mode. |
| Step 4 | Switch(config-vrf)# <code>ip multicast-routing vrf vrf-name</code> | (Optional) Enables global multicast routing for VRF table. |

| | Command | Purpose |
|---------|---|--|
| Step 5 | Switch(config-vrf)# rd <i>route-distinguisher</i> | Creates a VRF table by specifying a route distinguisher. Enter either an AS number and an arbitrary number (xxx:y) or an IP address and arbitrary number (A.B.C.D:y). |
| Step 6 | Switch(config-vrf)# route-target { export import both } <i>route-target-ext-community</i> | Creates a list of import, export, or import and export route target communities for the specified VRF. Enter either an AS system number and an arbitrary number (xxx:y) or an IP address and an arbitrary number (A.B.C.D:y). The <i>route-target-ext-community</i> value should be the same as the <i>route-distinguisher</i> value entered in Step 4. |
| Step 7 | Switch(config-vrf)# import map <i>route-map</i> | (Optional) Associates a route map with the VRF. |
| Step 8 | Switch(config-vrf)# interface <i>interface-id</i> | Enters interface configuration mode and specifies the Layer 3 interface to be associated with the VRF. The interface can be a routed port or a SVI. |
| Step 9 | Switch(config-if)# ip vrf forwarding <i>vrf-name</i> | Associates the VRF with the Layer 3 interface. |
| Step 10 | Switch(config-if)# ip address <i>ip-address mask</i> | Configures IP address for the Layer 3 interface. |
| Step 11 | Switch(config-if)# ip pim [sparse-dense mode dense-mode sparse-mode] | Enables PIM on the VRF-associated Layer 3 interface. |
| Step 12 | Switch(config-if)# end | Returns to privileged EXEC mode. |
| Step 13 | Switch# show ip vrf [brief detail interfaces] [<i>vrf-name</i>] | Verifies the configuration. Display information about the configured VRFs. |
| Step 14 | Switch# copy running-config startup-config | (Optional) Saves your entries in the configuration file. |

The following example shows how to configure multicast within a VRF table:

```
Switch(config)# ip routing
Switch(config)# ip vrf multiVrfA
Switch(config-vrf)# ip multicast-routing vrf multiVrfA
Switch(config-vrf)# interface GigabitEthernet3/1/0
Switch(config-if)# ip vrf forwarding multiVrfA
Switch(config-if)# ip address 172.21.200.203 255.255.255.0
Switch(config-if)# ip pim sparse-mode
```

For more information about configuring a multicast within a Multi-VRF CE, see the *Cisco IOS IP Multicast Configuration Guide, Release 12.4*.

Use the **no ip vrf vrf-name** global configuration command to delete a VRF and to remove all interfaces from it. Use the **no ip vrf forwarding** interface configuration command to remove an interface from the VRF.

Configuring a VPN Routing Session

Routing within the VPN can be configured with any supported routing protocol (RIP, OSPF, or BGP) or with static routing. The configuration shown here is for OSPF, but the process is the same for other protocols.

To configure OSPF in the VPN, perform this task:

| | Command | Purpose |
|--------|---|---|
| Step 1 | Switch# configure terminal | Enters global configuration mode. |
| Step 2 | Switch(config)# router ospf <i>process-id vrf vrf-name</i> | Enables OSPF routing, specifies a VPN forwarding table, and enters router configuration mode. |
| Step 3 | Switch(config-router)# log-adjacency-changes | (Optional) Logs changes in the adjacency state (the default state). |
| Step 4 | Switch(config-router)# redistribute bgp autonomous-system-number subnets | Sets the switch to redistribute information from the BGP network to the OSPF network. |
| Step 5 | Switch(config-router)# network <i>network-number area area-id</i> | Defines a network address and mask on which OSPF runs and the area ID for that network address. |
| Step 6 | Switch(config-router)# end | Returns to privileged EXEC mode. |
| Step 7 | Switch# show ip ospf <i>process-id</i> | Verifies the configuration of the OSPF network. |
| Step 8 | Switch# copy running-config startup-config | (Optional) Saves your entries in the configuration file. |

Use the **no router ospf process-id vrf vrf-name** global configuration command to disassociate the VPN forwarding table from the OSPF routing process.

The following example shows how to configure a single VRF named VRF-RED:

```
Switch(config)# ip vrf VRF-RED
Switch(config-vrf)# rd 1:1
Switch(config-vrf)# exit
Switch(config)# router eigrp virtual-name
Switch(config-router)# address-family ipv4 vrf VRF-RED autonomous-system 1
Switch(config-router-af)# network 10.0.0.0 0.0.0.255
Switch(config-router-af)# topology base
Switch(config-router-topology)# default-metric 10000 100 255 1 1500
Switch(config-router-topology)# exit-af-topology
Switch(config-router-af)# exit-address-family
```

Configuring BGP PE to CE Routing Sessions

To configure a BGP PE to CE routing session, perform this task:

| | Command | Purpose |
|--------|---|---|
| Step 1 | Switch# configure terminal | Enters global configuration mode. |
| Step 2 | Switch(config)# router bgp <i>autonomous-system-number</i> | Configures the BGP routing process with the AS number passed to other BGP routers and enters router configuration mode. |
| Step 3 | Switch(config-router)# network <i>network-number mask network-mask</i> | Specifies a network and mask to announce using BGP. |
| Step 4 | Switch(config-router)# redistribute ospf process-id match internal | Sets the switch to redistribute OSPF internal routes. |
| Step 5 | Switch(config-router)# network <i>network-number area area-id</i> | Defines a network address and mask on which OSPF runs and the area ID for that network address. |

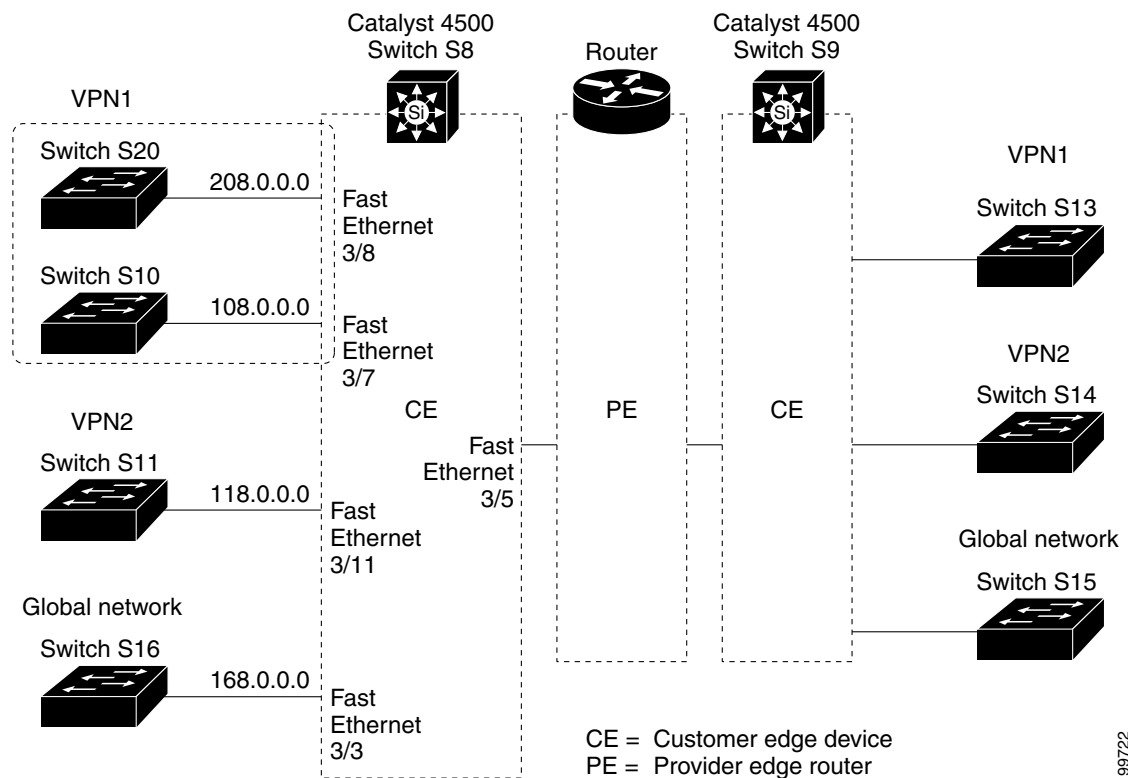
| | Command | Purpose |
|---------|---|--|
| Step 6 | Switch(config-router-af)# address-family ipv4 vrf vrf-name | Defines BGP parameters for PE to CE routing sessions and enters VRF address-family mode. |
| Step 7 | Switch(config-router-af)# neighbor <i>address remote-as as-number</i> | Defines a BGP session between PE and CE routers. |
| Step 8 | Switch(config-router-af)# neighbor <i>address activate</i> | Activates the advertisement of the IPv4 address family. |
| Step 9 | Switch(config-router-af)# end | Returns to privileged EXEC mode. |
| Step 10 | Switch# show ip bgp [ipv4] [neighbors] | Verifies BGP configuration. |
| Step 11 | Switch# copy running-config startup-config | (Optional) Saves your entries in the configuration file. |

Use the **no router bgp autonomous-system-number** global configuration command to delete the BGP routing process. Use the command with keywords to delete routing characteristics.

VRF-lite Configuration Example

Figure 41-2 is a simplified example of the physical connections in a network similar to that in Figure 41-1. OSPF is the protocol used in VPN1, VPN2, and the global network. BGP is used in the CE to PE connections. The example commands show how to configure the CE switch S8 and include the VRF configuration for switches S20 and S11 and the PE router commands related to traffic with switch S8. Commands for configuring the other switches are not included but would be similar.

Figure 41-2 VRF-lite Configuration Example



99722

Configuring Switch S8

On switch S8, enable routing and configure VRF.

```
Switch# configure terminal
Enter configuration commands, one per line. End with CNTL/Z.
Switch(config)# ip routing
Switch(config)# ip vrf v11
Switch(config-vrf)# rd 800:1
Switch(config-vrf)# route-target export 800:1
Switch(config-vrf)# route-target import 800:1
Switch(config-vrf)# exit
Switch(config)# ip vrf v12
Switch(config-vrf)# rd 800:2
Switch(config-vrf)# route-target export 800:2
Switch(config-vrf)# route-target import 800:2
Switch(config-vrf)# exit
```

Configure the loopback and physical interfaces on switch S8. Fast Ethernet interface 3/5 is a trunk connection to the PE. Interfaces 3/7 and 3/11 connect to VPNs:

```
Switch(config)# interface loopback1
Switch(config-if)# ip vrf forwarding v11
Switch(config-if)# ip address 8.8.1.8 255.255.255.0
Switch(config-if)# exit

Switch(config)# interface loopback2
Switch(config-if)# ip vrf forwarding v12
Switch(config-if)# ip address 8.8.2.8 255.255.255.0
Switch(config-if)# exit

Switch(config)# interface FastEthernet3/5
Switch(config-if)# switchport trunk encapsulation dot1q
Switch(config-if)# switchport mode trunk
Switch(config-if)# no ip address
Switch(config-if)# exit

Switch(config)# interface FastEthernet3/8
Switch(config-if)# switchport access vlan 208
Switch(config-if)# no ip address
Switch(config-if)# exit

Switch(config)# interface FastEthernet3/11
Switch(config-if)# switchport trunk encapsulation dot1q
Switch(config-if)# switchport mode trunk
Switch(config-if)# no ip address
Switch(config-if)# exit
```

Configure the VLANs used on switch S8. VLAN 10 is used by VRF 11 between the CE and the PE. VLAN 20 is used by VRF 12 between the CE and the PE. VLANs 118 and 208 are used for VRF for the VPNs that include switch S11 and switch S20, respectively:

```
Switch(config)# interface Vlan10
Switch(config-if)# ip vrf forwarding v11
Switch(config-if)# ip address 38.0.0.8 255.255.255.0
Switch(config-if)# exit
```

```
Switch(config)# interface Vlan20
Switch(config-if)# ip vrf forwarding v12
Switch(config-if)# ip address 83.0.0.8 255.255.255.0
Switch(config-if)# exit

Switch(config)# interface Vlan118
Switch(config-if)# ip vrf forwarding v12
Switch(config-if)# ip address 118.0.0.8 255.255.255.0
Switch(config-if)# exit

Switch(config)# interface Vlan208
Switch(config-if)# ip vrf forwarding v11
Switch(config-if)# ip address 208.0.0.8 255.255.255.0
Switch(config-if)# exit
```

Configure OSPF routing in VPN1 and VPN2:

```
Switch(config)# router ospf 1 vrf v11
Switch(config-router)# redistribute bgp 800 subnets
Switch(config-router)# network 208.0.0.0 0.0.0.255 area 0
Switch(config-router)# exit
Switch(config)# router ospf 2 vrf v12
Switch(config-router)# redistribute bgp 800 subnets
Switch(config-router)# network 118.0.0.0 0.0.0.255 area 0
Switch(config-router)# exit
```

Configure BGP for CE to PE routing:

```
Switch(config)# router bgp 800
Switch(config-router)# address-family ipv4 vrf v12
Switch(config-router-af)# redistribute ospf 2 match internal
Switch(config-router-af)# neighbor 83.0.0.3 remote-as 100
Switch(config-router-af)# neighbor 83.0.0.3 activate
Switch(config-router-af)# network 8.8.2.0 mask 255.255.255.0
Switch(config-router-af)# exit

Switch(config-router)# address-family ipv4 vrf v11
Switch(config-router-af)# redistribute ospf 1 match internal
Switch(config-router-af)# neighbor 38.0.0.3 remote-as 100
Switch(config-router-af)# neighbor 38.0.0.3 activate
Switch(config-router-af)# network 8.8.1.0 mask 255.255.255.0
Switch(config-router-af)# end
```

Configuring Switch S20

Configure S20 to connect to CE:

```
Switch# configure terminal
Enter configuration commands, one per line. End with CNTL/Z.
Switch(config)# ip routing
Switch(config)# interface Fast Ethernet 0/7
Switch(config-if)# no switchport
Switch(config-if)# ip address 208.0.0.20 255.255.255.0
Switch(config-if)# exit

Switch(config)# router ospf 101
Switch(config-router)# network 208.0.0.0 0.0.0.255 area 0
Switch(config-router)# end
```

Configuring Switch S11

Configure S11 to connect to CE:

```

Switch# configure terminal
Enter configuration commands, one per line.  End with CNTL/Z.
Switch(config)# ip routing
Switch(config)# interface Gigabit Ethernet 0/3
Switch(config-if)# switchport trunk encapsulation dot1q
Switch(config-if)# switchport mode trunk
Switch(config-if)# no ip address
Switch(config-if)# exit

Switch(config)# interface Vlan118
Switch(config-if)# ip address 118.0.0.11 255.255.255.0
Switch(config-if)# exit

Switch(config)# router ospf 101
Switch(config-router)# network 118.0.0.0 0.0.0.255 area 0
Switch(config-router)# end

```

Configuring the PE Switch S3

On switch S3 (the router), these commands configure only the connections to switch S8:

```

Router# configure terminal
Enter configuration commands, one per line.  End with CNTL/Z.
Router(config)# ip vrf v1
Router(config-vrf)# rd 100:1
Router(config-vrf)# route-target export 100:1
Router(config-vrf)# route-target import 100:1
Router(config-vrf)# exit

Router(config)# ip vrf v2
Router(config-vrf)# rd 100:2
Router(config-vrf)# route-target export 100:2
Router(config-vrf)# route-target import 100:2
Router(config-vrf)# exit

Router(config)# ip cef
Router(config)# interface Loopback1
Router(config-if)# ip vrf forwarding v1
Router(config-if)# ip address 3.3.1.3 255.255.255.0
Router(config-if)# exit

Router(config)# interface Loopback2
Router(config-if)# ip vrf forwarding v2
Router(config-if)# ip address 3.3.2.3 255.255.255.0
Router(config-if)# exit

Router(config)# interface Fast Ethernet3/0.10
Router(config-if)# encapsulation dot1q 10
Router(config-if)# ip vrf forwarding v1
Router(config-if)# ip address 38.0.0.3 255.255.255.0
Router(config-if)# exit

Router(config)# interface Fast Ethernet3/0.20
Router(config-if)# encapsulation dot1q 20
Router(config-if)# ip vrf forwarding v2
Router(config-if)# ip address 83.0.0.3 255.255.255.0
Router(config-if)# exit

Router(config)# router bgp 100
Router(config-router)# address-family ipv4 vrf v2
Router(config-router-af)# neighbor 83.0.0.8 remote-as 800
Router(config-router-af)# neighbor 83.0.0.8 activate
Router(config-router-af)# network 3.3.2.0 mask 255.255.255.0

```

```

Router(config-router-af)# exit
Router(config-router)# address-family ipv4 vrf v1
Router(config-router-af)# neighbor 83.0.0.8 remote-as 800
Router(config-router-af)# neighbor 83.0.0.8 activate
Router(config-router-af)# network 3.3.1.0 mask 255.255.255.0
Router(config-router-af)# end

```

Displaying VRF-lite Status

To display information about VRF-lite configuration and status, perform one of the following tasks:

| Command | Purpose |
|---|--|
| Switch# show ip protocols vrf <i>vrf-name</i> | Displays routing protocol information associated with a VRF. |
| Switch# show ip route vrf <i>vrf-name</i> [connected] [<i>protocol</i> [<i>as-number</i>]] [list] [mobile] [odr] [profile] [static] [summary] [supernets-only] | Displays IP routing table information associated with a VRF. |
| Switch# show ip vrf [brief detail interfaces] [<i>vrf-name</i>] | Displays information about the defined VRF instances. |
| Switch# show ip mroute vrf <i>instance-name a.b.c.d</i> active bidirectional count dense interface proxy pruned sparse ssm static summary | Displays information about the defined VRF instances. |

This example shows how to display multicast route table information within a VRF instance:

```

Switch# show ip mroute vrf mcast2 234.34.10.18
IP Multicast Routing Table
Flags: D - Dense, S - Sparse, B - Bidir Group, s - SSM Group, C - Connected,
       L - Local, P - Pruned, R - RP-bit set, F - Register flag,
       T - SPT-bit set, J - Join SPT, M - MSDP created entry,
       X - Proxy Join Timer Running, A - Candidate for MSDP Advertisement,
       U - URD, I - Received Source Specific Host Report,
       Z - Multicast Tunnel, z - MDT-data group sender,
       Y - Joined MDT-data group, y - Sending to MDT-data group
       V - RD & Vector, v - Vector
Outgoing interface flags: H - Hardware switched, A - Assert winner
Timers: Uptime/Expires
Interface state: Interface, Next-Hop or VCD, State/Mode

(*, 234.34.10.18), 13:39:21/00:02:58, RP 1.1.1.1, flags: BC
Bidir-Upstream: Vlan134, RPF nbr 172.16.34.1
Outgoing interface list:
  Vlan45, Forward/Sparse-Dense, 00:00:02/00:02:57, H
  Vlan134, Bidir-Upstream/Sparse-Dense, 13:35:54/00:00:00, H

```



Note

For more information about the information in the displays, refer to the *Cisco IOS Switching Services Command Reference* at:

http://www.cisco.com/en/US/docs/ios/ipswitch/command/reference/isw_book.html

Configuring VRF-lite for IPv6

Configuring VRF-Aware Services

IP services can be configured on global interfaces and within the global routing instance. IP services are enhanced to run on multiple routing instances; they are VRF-aware. Any configured VRF in the system can be specified for a VRF-aware service.

VRF-aware services are implemented in platform-independent modules. VRF provides multiple routing instances in Cisco IOS. Each platform has its own limit on the number of VRFs it supports.

VRF-aware services have the following characteristics:

- The user can ping a host in a user-specified VRF.
- ARP entries are learned in separate VRFs. The user can display Address Resolution Protocol (ARP) entries for specific VRFs.

These services are VRF-aware:

- Ping
- Unicast Reverse Path Forwarding (uRPF)
- Traceroute
- FTP and TFTP
- Telnet and SSH
- NTP

Configuring the User Interface for ARP

To configure VRF-aware services for ARP, perform this task:

| Command | Purpose |
|--|---|
| Switch# show ip arp vrf <i>vrf-name</i> | Displays the ARP table (static and dynamic entries) in the specified VRF. |
| Switch(config)# arp vrf <i>vrf-name</i> <i>ip-address mac-address ARPA</i> | Creates a static ARP entry in the specified VRF. |

Configuring the User Interface for PING

To perform a VRF-aware ping, perform this task:

| Command | Purpose |
|---|---|
| Switch# ping vrf <i>vrf-name ip-host</i> | Pings an IP host or address in the specified VRF. |

Configuring the User Interface for uRPF

You can configure uRPF on an interface assigned to a VRF. Source lookup is performed in the VRF table.

To configure VRF-aware services for uRPF, perform this task:

| | Command | Purpose |
|--------|---|---|
| Step 1 | Switch# configure terminal | Enters global configuration mode. |
| Step 2 | Switch(config)# interface <i>interface-id</i> | Enters interface configuration mode and specifies the Layer 3 interface to configure. |
| Step 3 | Switch(config-if)# no switchport | Removes the interface from Layer 2 configuration mode if it is a physical interface. |
| Step 4 | Switch(config-if)# ip vrf forwarding <i>vrf-name</i> | Configures VRF on the interface. |
| Step 5 | Switch(config-if-vrf)# ip address <i>ip-address subnet-mask</i> | Enters the IP address for the interface. |
| Step 6 | Switch(config-if-vrf)# ip verify unicast source reachable-via rx allow-default | Enables uRPF on the interface. |
| Step 7 | Switch(config-if-vrf)# end | Returns to privileged EXEC mode. |

Configuring the User Interface for Traceroute

To configure VRF-aware services for traceroute, perform this task:

| | Command | Purpose |
|--|---|---|
| | traceroute vrf <i>vrf-name ipaddress</i> | Specifies the name of a VPN VRF in which to find the destination address. |

Configuring the User Interface for FTP and TFTP

You must configure some FTP and TFTP CLIs in order for FTP and TFTP to be VRF-aware. For example, if you want to use a VRF table that is attached to an interface (for example, E1/0), you need to configure the **ip [t]ftp source-interface E1/0** command to inform [t]ftp to use a specific routing table. In this example, the VRF table is used to look up the destination IP address. These changes are backward-compatible and do not affect existing behavior. You can use the source-interface CLI to send packets out a particular interface even if no VRF is configured on that interface.

To specify the source IP address for FTP connections, use the **ip ftp source-interface** show mode command. To use the address of the interface where the connection is made, use the **no** form of this command.

To configure the user interface for FTP and TFTP, perform this task:

| | Command | Purpose |
|--------|-----------------------------------|-----------------------------------|
| Step 1 | Switch# configure terminal | Enters global configuration mode. |

| | Command | Purpose |
|--------|---|--|
| Step 2 | Switch(config)# ip ftp source-interface <i>interface-type</i> <i>interface-number</i> | Specifies the source IP address for FTP connections. |
| Step 3 | Switch(config)# end | Returns to privileged EXEC mode. |

To specify the IP address of an interface as the source address for TFTP connections, use the **ip tftp source-interface** show mode command. To return to the default, use the **no** form of this command.

| | Command | Purpose |
|--------|--|---|
| Step 1 | Switch# configure terminal | Enters global configuration mode. |
| Step 2 | Switch(config)# ip tftp source-interface <i>interface-type</i> <i>interface-number</i> | Specifies the source IP address for TFTP connections. |
| Step 3 | Switch(config)# end | Returns to privileged EXEC mode. |

Configuring the User Interface for Telnet and SSH

To configure VRF-aware for using Telnet and SSH, perform this task:

| Command | Purpose |
|---|--|
| Switch# telnet <i>ip-address/vrf</i> <i>vrf-name</i> | Connects through Telnet to an IP host or address in the specified VRF. |
| Switch# ssh -l <i>username -vrf</i> <i>vrf-name ip-host</i> | Connects through SSH to an IP host or address in the specified VRF. |

Configuring the User Interface for NTP

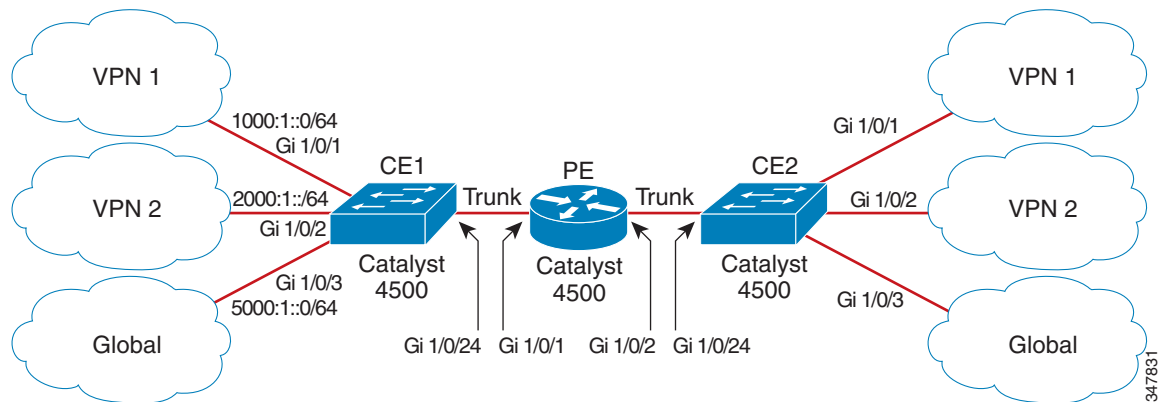
To configure VRF-aware for NTP, perform this task:

| Command | Purpose |
|---|--|
| Switch# ntp server vrf <i>vrf-name</i> ip-host | Configure the NTP server in the specified VRF. |
| Switch# ntp peer vrf <i>vrf-name</i> ip-host | Configure the NTP peer in the specified VRF. |

VRF-lite Configuration Example

The following topology illustrates how to use OSPFv3 for CE-PE routing.

Figure 41-3 VRF-lite Configuration Example



Configuring CE1 Switch

```

ipv6 unicast-routing
vrf definition v1
 rd 100:1
 !
address-family ipv6
 exit-address-family
!

vrf definition v2
 rd 200:1
 !
address-family ipv6
 exit-address-family
!

interface Vlan100
 vrf forwarding v1
 no ip address
 ipv6 address 1000:1::1/64
 ospfv3 100 ipv6 area 0
!

interface Vlan200
 vrf forwarding v2
 no ip address
 ipv6 address 2000:1::1/64
 ospfv3 200 ipv6 area 0
!

interface GigabitEthernet 1/0/1
 switchport access vlan 100
 end

interface GigabitEthernet 1/0/2
 switchport access vlan 200
 end

interface GigabitEthernet 1/0/24
 switchport trunk encapsulation dot1q

switchport mode trunk
 no ip address

```

```

end

router ospfv3 100
router-id 10.10.10.10
!
address-family ipv6 unicast vrf v1
redistribute connected
area 0 normal
exit-address-family
!

router ospfv3 200
router-id 20.20.20.20
!
address-family ipv6 unicast vrf v2
redistribute connected
area 0 normal
exit-address-family
!

```

Configuring PE Switch

```

ipv6 unicast-routing

vrf definition v1
rd 100:1
!
address-family ipv6
exit-address-family
!

vrf definition v2
rd 200:1
!
address-family ipv6
exit-address-family
!

interface Vlan600
vrf forwarding v1
no ip address
ipv6 address 1000:1::2/64
ospfv3 100 ipv6 area 0
!

interface Vlan700
vrf forwarding v2
no ip address
ipv6 address 2000:1::2/64
ospfv3 200 ipv6 area 0
!

interface Vlan800
vrf forwarding v1
no ip address
ipv6 address 3000:1::7/64
ospfv3 100 ipv6 area 0
!

interface Vlan900
vrf forwarding v2
no ip address
ipv6 address 4000:1::7/64
ospfv3 200 ipv6 area 0
!

```

```

interface GigabitEthernet 1/0/1
  switchport trunk encapsulation dot1q
  switchport mode trunk
  no ip address
  exit

interface GigabitEthernet 1/0/2
  switchport trunk encapsulation dot1q

switchport mode trunk
  no ip address
  exit

router ospfv3 100
  router-id 30.30.30.30
  !
  address-family ipv6 unicast vrf v1
    redistribute connected
    area 0 normal
  exit-address-family
  !
  address-family ipv6 unicast vrf v2
    redistribute connected
    area 0 normal
  exit-address-family
  !

```

Configuring CE2 Switch

```

ipv6 unicast-routing

vrf definition v1
  rd 100:1
  !
  address-family ipv6
    exit-address-family
  !

vrf definition v2
  rd 200:1
  !
  address-family ipv6
    exit-address-family
  !

interface Vlan100
  vrf forwarding v1
  no ip address

ipv6 address 1000:1::3/64
  ospfv3 100 ipv6 area 0
  !

interface Vlan200
  vrf forwarding v2
  no ip address
  ipv6 address 2000:1::3/64
  ospfv3 200 ipv6 area 0
  !

interface GigabitEthernet 1/0/1
  switchport access vlan 100

```

```
end

interface GigabitEthernet 1/0/2
switchport access vlan 200
end

interface GigabitEthernet 1/0/24
switchport trunk encapsulation dot1q
switchport mode trunk
end

router ospfv3 100
router-id 40.40.40.40
!
address-family ipv6 unicast vrf v1
redistribute connected
area 0 normal
exit-address-family
!

router ospfv3 200
router-id 50.50.50.50
!
address-family ipv6 unicast vrf v2
redistribute connected

area 0 normal
exit-address-family
!
```

Displaying VRF-lite Status

To display information about VRF-lite configuration and status, perform one of the following tasks:

**Note**

For more information about the information in the displays, refer to the *Cisco IOS Switching Services Command Reference* at:

http://www.cisco.com/en/US/docs/ios/ipswitch/command/reference/isw_book.html

To display information about VRF-lite configuration and status, perform one of the following tasks:

| Command | Purpose |
|---|--|
| <pre>Switch# show ipv6 route vrf a [X:X:X:X::X/<0-128>] [bgp] [connected] [eigrp] [interface] [isis] [local] [nd] [nsf] [ospf] [repair] [rip] [shortcut] [static] [summary] [tag] [updated] [watch]</pre> | <p>Displays routing protocol information associated with a VRF.</p> <pre>X:X:X:X::X/<0-128> IPv6 prefix bgp BGP routes connected Connected routes eigrp EIGRP routes interface interface specific routes isis IS-IS routes local Local routes nd ND routes nsf non stop forwarding state ospf OSPFv3 routes repair Routes with Repair paths rip RIPng routes shortcut Routes with Shortcut paths static Static routes summary Summary display tag Route Tag updated Show routes with timestamps watch route watchers</pre> |
| <pre>Switch# show ipv6 vrf [brief detail interfaces] [vrf-name]</pre> | <p>Displays information about the defined VRF instances.</p> <pre>brief Brief VPN Routing/Forwarding instance information detail Detailed VPN Routing/Forwarding instance information interfaces Show VPN Routing/Forwarding interface information</pre> |

When you configure VRF table “a” with the IPv6 address family and attach the VRF to the interface with IPv6 address 1::2/64, the **show ipv6 route vrf a** command displays the following output:

```
Switch# show ipv6 route vrf a
IPv6 Routing Table - a - 3 entries
Codes: C - Connected, L - Local, S - Static, U - Per-user Static route
        B - BGP, R - RIP, I1 - ISIS L1, I2 - ISIS L2
        IA - ISIS interarea, IS - ISIS summary, D - EIGRP, EX - EIGRP external
        ND - ND Default, NDp - ND Prefix, DCE - Destination, NDr - Redirect
        O - OSPF Intra, OI - OSPF Inter, OE1 - OSPF ext 1, OE2 - OSPF ext 2
        ON1 - OSPF NSSA ext 1, ON2 - OSPF NSSA ext 2
C 1::/64 [0/0]
   via GigabitEthernet7/1, directly connected
L 1::2/128 [0/0]
   via GigabitEthernet7/1, receive
L FF00::/8 [0/0]
   via Null0, receive
Switch#
```

For further examples, refer to

http://www.cisco.com/en/US/docs/ios/ipv6/command/reference/ipv6_16.html

Configuring IPv6 VRF-lite

Beginning with Release IOS XE 3.5.0E and IOS 15.2(1)E, to support IPv6 VRF-lite, we transition from the **ip vrf** command to the “new” **vrf definition** command.

Configure VRFs

To configure one or more VRFs, perform this task:

| | Command | Purpose |
|---------|---|---|
| Step 1 | Switch# configure terminal | Enters global configuration mode. |
| Step 2 | Switch(config)# ipv6 routing | Enables IPv6 routing. |
| Step 3 | Switch(config)# vrf definition <i>vrf-name</i> | Names the VRF and enters VRF configuration mode. |
| Step 4 | Switch(config-vrf)# address-family <i>ipv4 ipv6</i> | (Optional) IPv4 by default. Configuration MUST for ipv6. |
| Step 5 | Switch(config-vrf)# rd <i>route-distinguisher</i> | (Optional) Creates a VRF table by specifying a route distinguisher. Enter either an Autonomous System number and an arbitrary number (xxx:y) or an IP address and arbitrary number (A.B.C.D:y). |
| Step 6 | Switch(config-vrf)# route-target { export import both } <i>route-target-ext-community</i> | (Optional) Creates a list of import, export, or import and export route target communities for the specified VRF. Enter either an AS system number and an arbitrary number (xxx:y) or an IP address and an arbitrary number (A.B.C.D:y). Note This command is effective only if BGP is running. |
| Step 7 | Switch(config-vrf)# import map <i>route-map</i> | (Optional) Associates a route map with the VRF. |
| Step 8 | Switch(config-vrf)# interface <i>interface-id</i> | Enters interface configuration mode and specify the Layer 3 interface to be associated with the VRF. The interface can be a routed port or SVI. |
| Step 9 | Switch(config-if)# ip vrf forwarding <i>vrf-name</i> | Associates the VRF with the Layer 3 interface. |
| Step 10 | Switch(config-if)# end | Returns to privileged EXEC mode. |
| Step 11 | Switch# show ip vrf [brief detail interfaces] [<i>vrf-name</i>] | Verifies the configuration. Displays information about the configured VRFs. |
| Step 12 | Switch# copy running-config startup-config | (Optional) Saves your entries in the configuration file. |

This example shows how to configure VRFs:

```
Switch(config)# vrf definition red
Switch(config-vrf)# rd 100:1
Switch(config-vrf)# address family ipv6
Switch(config-vrf-af)# route-target both 200:1
Switch(config-vrf)# exit-address-family
Switch(config-vrf)# interface Ethernet0/1
Switch(config-if)# vrf forwarding red
Switch(config-if)# ipv6 address 5000::72B/64
```

Associate Interfaces to the Defined VRFs

To associate interface to the defined VRFs, perform this task:

| | Command | Purpose |
|--------|--|---|
| Step 1 | Switch(config)# vrf configuration | Enters vrf configuration mode. |
| Step 1 | Switch(config-vrf)# interface <i>interface-id</i> | Enters interface configuration mode and specifies the Layer 3 interface to be associated with the VRF. The interface can be a routed port or SVI. |
| Step 2 | Switch(config-if)# vrf forwarding <i>vrf-name</i> | Associates the VRF with the Layer 3 interface. |
| Step 3 | Switch(config-if)# end | Returns to privileged EXEC mode. |
| Step 4 | Switch# show ipv6 vrf [brief detail interfaces] [<i>vrf-name</i>] | Verifies the configuration. Displays information about the configured VRFs. |
| Step 5 | Switch# copy running-config startup-config | (Optional) Saves your entries in the configuration file. |

This example shows how to associate an interface to VRFs:

```
Switch(config-vrf)# interface ethernet0/1
Switch(config-if)# vrf forwarding red
Switch(config-if)# ipv6 address 5000::72B/64
```

Populate VRF with Routes via Routing Protocols

Static Route

| | Command | Purpose |
|--------|---|---|
| Step 1 | ipv6 route [vrf vrf-name] ipv6-prefix/prefix-length { <i>ipv6-address</i> interface-type <i>interface-number</i> [<i>ipv6-address</i>]} | To configure static routes specific to VRF. |

This example shows how to populate VRF with a static route:

```
Switch(config)# ipv6 route vrf v6a 7000::/64 TenGigabitEthernet3/2 4000::2
```


Routing Protocols

OSPFv3

To configure the OSPFv3 router process and the IPv6 address family in OSPFv3, perform the following steps:

| | Command | Purpose |
|--------|--|--|
| Step 1 | Switch> enable | Enters privileged EXEC mode. Enter your password if prompted. |
| Step 2 | Switch# configure terminal | Enters global configuration mode. |
| Step 3 | Switch(config)# router ospfv3 <i>process-id</i> | Enables OSPFv3 router configuration mode for the IPv4 or IPv6 address family. |
| Step 4 | Switch(config-router)# area <i>area-ID</i> [default-cot nssa stub] | Configures the OSPFv3 area. |
| Step 5 | Switch(config-router)# router-id <i>router-id</i> | Use a fixed router ID. |
| Step 6 | Switch(config-router)# address-family ipv6 unicast vrf <i>vrf-name</i> <i>Or</i> Switch(config-router)# address-family ipv4 unicast | Enters IPv6 address family configuration mode for OSPFv3 in VRF <i>vrf-name</i> or Enters IPv4 address family configuration mode for OSPFv3. |
| Step 7 | Switch(config-router)# redistribute source-protocol [<i>process-id</i>] options | Redistributes IPv6 and IPv4 routes from one routing domain into another routing domain. |
| Step 8 | Switch(config-router)# end | Returns to privileged EXEC mode. |

This example shows how configure the OSPFv3 router process:

```
Switch(config-router)# router ospfv3 1
Switch(config-router)# router-id 1.1.1.1
Switch(config-router)# address-family ipv6 unicast
Switch(config-router-af)# exit-address-family
```

To enable OSPFv3 on an interface, do the following:

| | Command | Purpose |
|--------|--|--|
| Step 1 | Switch> enable | Enters privileged EXEC mode. Enter your password if prompted. |
| Step 2 | Switch# configure terminal | Enters global configuration mode. |
| Step 3 | Switch(config)# interface <i>type-number</i> | Specifies an interface type and number, and places the switch in interface configuration mode. |

| | Command | Purpose |
|--------|--|--|
| Step 4 | Switch(config-if)# ospfv3 <i>process-id</i> area <i>area-ID</i> { ipv4 ipv6 } [instance <i>instance-id</i>] | Enables OSPFv3 on an interface with the IPv4 or IPv6 AF. |
| | <i>Or</i> | or |
| | Switch(config-if)# ipv6 ospf process-id area <i>area-ID</i> [instance <i>instance-id</i>] | Enables OSPFv3 on an interface. |
| Step 5 | Switch(config-if)# end | Returns to privileged EXEC mode. |

This example show how to enable OSPFv3 on an interface:

```
Switch(config)# interface GigabitEthernet2/1
Switch(config-if)# no switchport
Switch(config-if)# ipv6 address 4000::2/64
Switch(config-if)# ipv6 enable
Switch(config-if)# ipv6 ospf 1 area 0
Switch(config-if)# end
```

EIGRP

To configure an EIGRPv6 routing process, perform the following steps:

| | Command | Purpose |
|--------|---|--|
| Step 1 | Switch> enable | Enters privileged EXEC mode. Enter your password if prompted. |
| Step 2 | Switch# configure terminal | Enters global configuration mode. |
| Step 3 | Switch(config)# router eigrp <i>virtual-instance-name</i> | Configures the EIGRP routing process and enters router configuration mode. |
| Step 4 | Switch(config-router)# address-family ipv6 vrf <i>vrf-name</i> autonomous-system <i>autonomous-system-number</i> | Enables EIGRP IPv6 VRF-Lite and enters address family configuration mode. |
| Step 5 | Switch(config-router-af)# topology { base topology-name tid number | Configures an EIGRP process to route IP traffic under the specified topology instance and enters address family topology configuration mode. |
| Step 6 | Switch(config-router-af-topology)# exit-af-topology | Exits address family topology configuration mode. |
| Step 7 | Switch(config-router)# eigrp router-id <i>ip-address</i> | Enables the use of a fixed router-id. |
| Step 8 | Switch(config-router)# end | Exits router configuration mode. |

This example shows how to configure an EIGRP routing process:

```
Switch(config)# router eigrp test
Switch(config-router)# address-family ipv6 unicast vrf b1 autonomous-system 10
Switch(config-router-af)# topology base
Switch(config-router-af-topology)# exit-af-topology
Switch(config-router)# eigrp router-id 2.3.4.5
Switch(config-router)# exit-address-family
```

EBGPv6

To configure EBGPv6, do the following:

| | Command | Purpose |
|--------|--|--|
| Step 1 | Switch> enable | Enters privileged EXEC mode. Enter your password if prompted. |
| Step 2 | Switch# configure terminal | Enters global configuration mode. |
| Step 3 | Switch(config)# router bgp <i>as-number</i> | Enters router configuration mode for the specified routing process. |
| Step 4 | Switch(config-router)# neighbor <i>peer-group-name peer-group</i> | Creates a multiprotocol BGP peer group. |
| Step 5 | Switch(config-router)# neighbor { <i>ip-address</i> <i>ipv6-address</i> [%] <i>peer-group-name</i> } remote-as <i>autonomous-system-number</i> [alternate-as <i>autonomous-system-number</i> ...] | Adds the IPv6 address of the neighbor in the specified autonomous system to the IPv6 multiprotocol BGP neighbor table of the local router. |
| Step 6 | Switch(config-router)# address-family ipv6 [vrf <i>vrf-name</i>] [unicast multicast vpnv6] | Specifies the IPv6 address family, and enters address family configuration mode. <ul style="list-style-type: none"> The unicast keyword specifies the IPv6 unicast address family. By default, the switch is placed in configuration mode for the IPv6 unicast address family if the unicast keyword is not specified with the address-family ipv6 command. The multicast keyword specifies IPv6 multicast address prefixes. |
| Step 7 | Switch(config-router-af)# neighbor <i>ipv6-address peer-group</i> <i>peer-group-name</i> | Assigns the IPv6 address of a BGP neighbor to a peer group. |
| Step 8 | Switch(config-router-af)# neighbor { <i>ip-address</i> <i>peer-group-name</i> <i>ipv6-address</i> [%]} route-map <i>map-name</i> { in out } | Applies a route map to incoming or outgoing routes. <ul style="list-style-type: none"> Changes to the route map will not take effect for existing peers until the peering is reset or a soft reset is performed. Using the clear bgp ipv6 command with the soft and in keywords will perform a soft reset. |
| Step 9 | Switch(config-router-af)# exit | Exits address family configuration mode, and returns the router to router configuration mode. |

This example shows how to configure EBRPv6:

```
Switch(config)# router bgp 2
Switch(config-router)# bgp router-id 2.2.2.2
Switch(config-router)# bgp log-neighbor-changes
Switch(config-router)# no bgp default ipv4-unicast
Switch(config-router)# neighbor 2500::1 remote-as 1
Switch(config-router)# neighbor 4000::2 remote-as 3
Switch(config-router)# address-family ipv6 vrf b1
Switch(config-router-af)# network 2500::/64
Switch(config-router-af)# network 4000::/64
Switch(config-router-af)# neighbor 2500::1 remote-as 1
Switch(config-router-af)# neighbor 2500::1 activate
Switch(config-router-af)# neighbor 4000::2 remote-as 3
```

```
Switch(config-router-af)# neighbor 4000::2 activate
Switch(config-router-af)# exit-address-family
```

VPN Co-existence Between IPv4 and IPv6

With Release IOS XE 3.5.0E and IOS 15.2(1)E, we provide backward compatibility between the “older” CLI for configuring IPv4 and the “new” CLI for IPv6. This means that a configuration might contain both CLI. The IPv4 CLI retains the ability to have on the same interface, an IP address defined within a VRF as well as an IPv6 address defined in the global routing table.

For example:

```
vrf definition red
rd 100:1
address family ipv6
route-target both 200:1
exit-address-family
!
ip vrf blue
rd 200:1
route-target both 200:1
!
interface Ethernet0/0
vrf forwarding red
ip address 50.1.1.2 255.255.255.0
ipv6 address 4000::72B/64
!
interface Ethernet0/1
ip vrf forwarding blue
ip address 60.1.1.2 255.255.255.0
ipv6 address 5000::72B/64
```

In this example, all addresses (v4 and v6) defined for Ethernet0/0 refer to VRF red whereas for Ethernet0/1, the IP address refers to VRF blue but the ipv6 address refers to the global IPv6 routing table.

Migrating from the Old to New CLI Scheme

Prior to Release IOS XE 3.5.0E and IOS 15.2(1)E, you used the **ip vrf** command to configure vrf. With Release IOS XE 3.5.0E and IOS 15.2(1)E, you use the new **vrf definition** command.

Henceforward, to incorporate IPv6 VRF configurations in addition to IPv4 configurations, you must *migrate* from the prior VRF CLI scheme using the following command:

```
Switch(config)# vrf upgrade-cli multi-af-mode {common-policies | non-common-policies} [vrf
name]
```

This command forces migration from *old* CLI for IPv4 VRF to the *new* VRF multi-AF CLI. It is not nvgen'd because the effect is “one-time” only (see BGP similar command " bgp upgrade-cli ").