



Release Notes for the Cisco ASA Device Package Software, Version 1.2(1) for ACI

Released: June 15, 2015

Revised: September 18, 2015

This document contains release information for the Cisco ASA Device Package software, Version 1.2(1) for ACI, and includes the following sections:

- [Supported ASA Models, page 1](#)
- [New Features, page 2](#)
- [Model Changes Between 1.1\(1\) and 1.2\(1\), page 3](#)
- [Important Notes, page 3](#)
- [Installing the Software, page 3](#)
- [Open Caveats, page 3](#)
- [Resolved Caveats, page 4](#)
- [Related Documentation, page 4](#)
- [Obtaining Documentation and Submitting a Service Request, page 5](#)

Supported ASA Models

The following table lists the supported ASA models.

ASA Model	Software Version
ASA 5500-X (5512 through 5555)	ASA software Version 8.4(x) and later
ASA 5585-X (SSP 10 through SSP 60)	
ASAv	



Americas Headquarters:
Cisco Systems, Inc., 170 West Tasman Drive, San Jose, CA 95134-1706 USA

New Features

We have added support for the following:

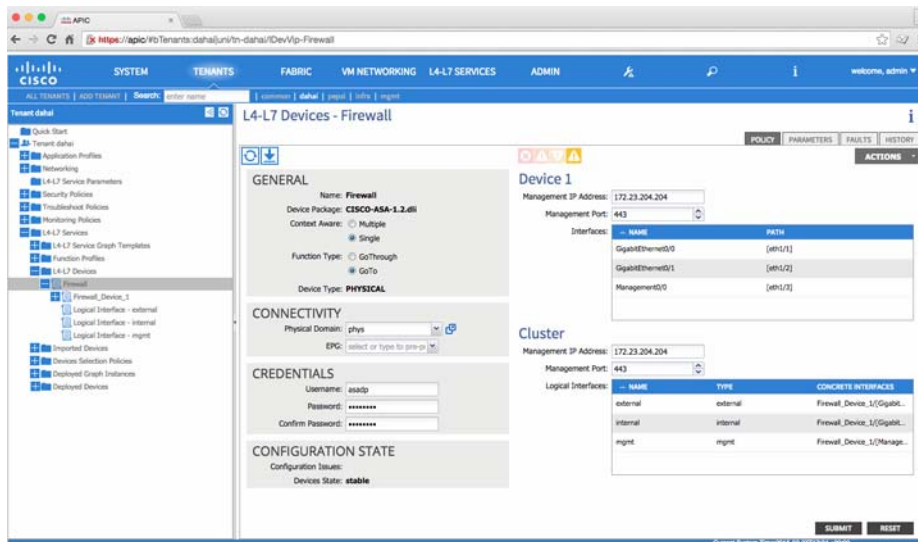
- Dynamic routing (as supported by the APIC)
 - BGP (IPv4 and IPv6)
 - OSPF (OSPFv2 and OSPFv3)
- Multiple contexts
- Configuring **same-security-traffic-permit inter-interface**
- Configuring direct failover links that do not use the ACI fabric
- NAT **net-to-net** option
- Redirecting ASA traffic to the ASA FirePOWER module using the **sfr** command



Note

OSPFv3 requires ASA release 9.0(1) or above
 BGP (IPv4) requires ASA release 9.2(1) or above
 BGP (IPv6) requires ASA release 9.3(2) or above

The following figure shows the how to set up the APIC to access the ASA. For an ASA in multi-context mode, the management IP address of the cluster should be that of the admin context of the ASA, and the management IP address of Device 1 should be that of the target user context. (The admin context can be the target user context as well.)



Each context must be defined as its own APIC cluster. Multiple contexts within an ASA cannot be represented under a single cluster.

Model Changes Between 1.1(1) and 1.2(1)

- We changed the ipv4_address and ipv6_address parameters to folders in the BridgeGroupIntf folder.
- We changed the ipv4_address and ipv6_link_local_address parameters to folders in the InterfaceConfig folder.
- We moved the PortChannelMember and LACPMaxBundle folders from device configuration to cluster configuration.
- We removed all the parameters named rate_status under the BasicThreatDetection folder.
- We removed the status parameter in the ScanningThreatRate folder.
- We removed the statistics parameter in the AdvancedThreatDetection folder.

Important Notes

- In a scenario where there are two identical graphs (identical interfaces) that have one BD with multiple EPGs, it is not possible to support NAT because NAT cannot differentiate between interfaces.
- When you delete NAT on one of the graphs or delete one of the graph instances, the ASA Device Package cannot determine which one you want to delete, and it removes both.
- The ASAv does not support multiple context mode.

Installing the Software

To install the ASA Device Package software, see the *Cisco ASA Integration with the APIC Quick Start Guide* for instructions, at:

<http://www.cisco.com/c/en/us/support/cloud-systems-management/application-policy-infrastructure-controller-apic/tsd-products-support-series-home.html>

Downloading the Software from Cisco.com

If you have a Cisco.com login, you can obtain the ASA Device Package image from the following website:

<https://software.cisco.com/download/release.html?i=!y&mdfid=286119613&softwareid=286279676&release=1.1.1.2&os=>

Open Caveats

If you are a registered Cisco.com user, view more information about each caveat using Bug Search at the following website:

<https://tools.cisco.com/bugsearch>

The following table contains open caveats in *ASA Device Package Version 1.2(1)*:

Caveat	Description
CSCuu40212	Extra configuration when changing OSPF Router-ID with active process

Resolved Caveats

If you are a registered Cisco.com user, view more information about each caveat using Bug Search at the following website:

<https://tools.cisco.com/bugsearch>

The following table contains resolved caveats in *ASA Device Package Version 1.2(1)*:

Caveat	Description
CSCur81074	Network misspelled in numerous display labels
CSCur97279	ASA rules are not updated after ACE renumbering in SG
CSCur97303	ASA dev pkg missing standby keyword on data interfaces
CSCur97335	ASA dev pkg only program partial functions in SG
CSCur97527	Included function profiles apply ACL to internal interface
CSCus28951	ASAv vnsDevProf missing interface
CSCus95368	vnsMFolder spelling error
CSCut08755	Support failover LAN & stateful failover link on same interface
CSCut16659	Mgmt_standby_ip should use device context label
CSCut16741	VLAN didn't get updated on the ASA after recreating the service graph
CSCuu06448	Failover fault when changing unit or interface hold time

Related Documentation

For additional information about the ASA, see *Navigating the Cisco ASA Series Documentation*:

<http://www.cisco.com/go/asadocs>

For additional information about the APIC, see the Cisco APIC solution website:

<http://www.cisco.com/c/en/us/solutions/enterprise-networks/application-centric-infrastructure-security/index.html>

Obtaining Documentation and Submitting a Service Request

For information on obtaining documentation, using the Cisco Bug Search Tool (BST), submitting a service request, and gathering additional information, see *What's New in Cisco Product Documentation* at: <http://www.cisco.com/c/en/us/td/docs/general/whatsnew/whatsnew.html>.

Subscribe to *What's New in Cisco Product Documentation*, which lists all new and revised Cisco technical documentation as an RSS feed and delivers content directly to your desktop using a reader application. The RSS feeds are a free service.

This document is to be used in conjunction with the documents listed in the “[Related Documentation](#)” section.

Cisco and the Cisco logo are trademarks or registered trademarks of Cisco and/or its affiliates in the U.S. and other countries. To view a list of Cisco trademarks, go to this URL: www.cisco.com/go/trademarks. Third-party trademarks mentioned are the property of their respective owners. The use of the word partner does not imply a partnership relationship between Cisco and any other company. (1110R)

Any Internet Protocol (IP) addresses used in this document are not intended to be actual addresses. Any examples, command display output, and figures included in the document are shown for illustrative purposes only. Any use of actual IP addresses in illustrative content is unintentional and coincidental.

©2015 Cisco Systems, Inc. All rights reserved.

