



Wide-Area Networking Configuration Guide: Overlay Transport Virtualization, Cisco IOS XE Fuji 16.8.x

Americas Headquarters

Cisco Systems, Inc.
170 West Tasman Drive
San Jose, CA 95134-1706
USA
<http://www.cisco.com>
Tel: 408 526-4000
800 553-NETS (6387)
Fax: 408 527-0883

THE SPECIFICATIONS AND INFORMATION REGARDING THE PRODUCTS IN THIS MANUAL ARE SUBJECT TO CHANGE WITHOUT NOTICE. ALL STATEMENTS, INFORMATION, AND RECOMMENDATIONS IN THIS MANUAL ARE BELIEVED TO BE ACCURATE BUT ARE PRESENTED WITHOUT WARRANTY OF ANY KIND, EXPRESS OR IMPLIED. USERS MUST TAKE FULL RESPONSIBILITY FOR THEIR APPLICATION OF ANY PRODUCTS.

THE SOFTWARE LICENSE AND LIMITED WARRANTY FOR THE ACCOMPANYING PRODUCT ARE SET FORTH IN THE INFORMATION PACKET THAT SHIPPED WITH THE PRODUCT AND ARE INCORPORATED HEREIN BY THIS REFERENCE. IF YOU ARE UNABLE TO LOCATE THE SOFTWARE LICENSE OR LIMITED WARRANTY, CONTACT YOUR CISCO REPRESENTATIVE FOR A COPY.

The Cisco implementation of TCP header compression is an adaptation of a program developed by the University of California, Berkeley (UCB) as part of UCB's public domain version of the UNIX operating system. All rights reserved. Copyright © 1981, Regents of the University of California.

NOTWITHSTANDING ANY OTHER WARRANTY HEREIN, ALL DOCUMENT FILES AND SOFTWARE OF THESE SUPPLIERS ARE PROVIDED "AS IS" WITH ALL FAULTS. CISCO AND THE ABOVE-NAMED SUPPLIERS DISCLAIM ALL WARRANTIES, EXPRESSED OR IMPLIED, INCLUDING, WITHOUT LIMITATION, THOSE OF MERCHANTABILITY, FITNESS FOR A PARTICULAR PURPOSE AND NON-INFRINGEMENT OR ARISING FROM A COURSE OF DEALING, USAGE, OR TRADE PRACTICE.

IN NO EVENT SHALL CISCO OR ITS SUPPLIERS BE LIABLE FOR ANY INDIRECT, SPECIAL, CONSEQUENTIAL, OR INCIDENTAL DAMAGES, INCLUDING, WITHOUT LIMITATION, LOST PROFITS OR LOSS OR DAMAGE TO DATA ARISING OUT OF THE USE OR INABILITY TO USE THIS MANUAL, EVEN IF CISCO OR ITS SUPPLIERS HAVE BEEN ADVISED OF THE POSSIBILITY OF SUCH DAMAGES.

Any Internet Protocol (IP) addresses and phone numbers used in this document are not intended to be actual addresses and phone numbers. Any examples, command display output, network topology diagrams, and other figures included in the document are shown for illustrative purposes only. Any use of actual IP addresses or phone numbers in illustrative content is unintentional and coincidental.

Cisco and the Cisco logo are trademarks or registered trademarks of Cisco and/or its affiliates in the U.S. and other countries. To view a list of Cisco trademarks, go to this URL: <https://www.cisco.com/go/trademarks>. Third-party trademarks mentioned are the property of their respective owners. The use of the word partner does not imply a partnership relationship between Cisco and any other company. (1721R)

© 2018 Cisco Systems, Inc. All rights reserved.



CONTENTS

CHAPTER 1

Read Me First 1

CHAPTER 2

Configuring Overlay Transport Virtualization 3

Finding Feature Information 4

Prerequisites for OTV 4

Restrictions for OTV 4

Information About OTV 5

Functions of OTV 5

OTV Terms 5

OTV Overlay Network 7

Edge Devices 8

Site-to-Site Connectivity 8

Overlay Networks Mapping to Multicast Groups 8

OTV Packet Flow 9

Mobility 10

Sample OTV Topologies 11

Single-Homed Network 11

Multiple Overlay Networks 11

Multihomed Sites and Load Balancing 12

Dual Site Adjacency 12

OTV Features 13

Overlay Interface 13

MAC Address Learning 14

MAC Address Reachability Updates 14

Multicast Group Addresses and IGMP Snooping 14

ARP Cache 14

High Availability 14

OTV IS-IS 15

OTV IS-IS Instances	15
OTV IS-IS MLRIB Interactions	15
How to Configure OTV	16
Creating an Overlay Interface	16
Associating an Overlay Interface with a Physical Interface	17
Configuring a Multicast Group Address	18
Configuring a VLAN over an Overlay Interface	20
Configuring the Site Bridge Domain and the Site Identifier	21
Configuring Authentication for OTV IS-IS Hellos	23
Configuring Authentication for OTV IS-IS PDUs	25
Disabling ARP Caching	26
Tuning OTV Parameters	27
Configuration Examples for OTV Features	29
Example: Configuring Overlay Interface and VLANs	29
Verifying the OTV Configuration	36
Additional References	37
Feature Information for OTV	38

CHAPTER 3**OTV Adjacency Server 43**

Finding Feature Information	43
Restrictions for OTV Adjacency Server	44
Information About OTV Adjacency Server	44
Overview of a Unicast-Core Network	44
Adjacency Servers	44
Overview of an Adjacency Server	44
Functions of an Adjacency Server	45
Unicast-Only Edge Devices	45
Unicast Replication List	45
How Adjacency Servers and Edge Devices Work	45
Exclusivity Between Multicast- and Unicast-Core Networks	46
How to Configure an OTV Adjacency Server	46
Configuring an OTV Adjacency Server	46
Configuring an OTV Edge Device in a Unicast-Core Network	48
Configuration Examples for OTV Adjacency Server	49
Example: Configuring an OTV Adjacency Server	49

Example: Configuring an OTV Edge Device in a Unicast-Core Network 49

Additional References for OTV Adjacency Server 50

Feature Information for OTV Adjacency Server 50



Read Me First

Important Information about Cisco IOS XE 16

Effective Cisco IOS XE Release 3.7.0E (for Catalyst Switching) and Cisco IOS XE Release 3.17S (for Access and Edge Routing) the two releases evolve (merge) into a single version of converged release—the Cisco IOS XE 16—providing one release covering the extensive range of access and edge products in the Switching and Routing portfolio.

Feature Information

Use [Cisco Feature Navigator](#) to find information about feature support, platform support, and Cisco software image support. An account on Cisco.com is not required.

Related References

- [Cisco IOS Command References, All Releases](#)

Obtaining Documentation and Submitting a Service Request

For information on obtaining documentation, using the Cisco Bug Search Tool (BST), submitting a service request, and gathering additional information, see [What's New in Cisco Product Documentation](#).

To receive new and revised Cisco technical content directly to your desktop, you can subscribe to the [What's New in Cisco Product Documentation RSS feed](#). RSS feeds are a free service.



CHAPTER 2

Configuring Overlay Transport Virtualization

Overlay Transport Virtualization (OTV) is a MAC-in-IP method that extends Layer 2 connectivity across a transport network infrastructure. OTV provides Layer 2 connectivity between remote network sites by using MAC-address-based routing and IP-encapsulated forwarding across a transport network to provide support for applications that require Layer 2 adjacency.

The OTV application (also known as OTV) is one of the modules of the OTV architecture in Cisco software. OTV interacts with the following other modules of the OTV architecture in Cisco IOS software:

- Layer 2 Intermediate System-to-Intermediate System (IS-IS)
- Ethernet infrastructure
- IP tunnel infrastructure
- Layer 2 Forwarding Information Base (L2FIB)
- Multilayer Routing Information Base (MLRIB)
- Ethernet Operation, Administration, and Maintenance (OAM)
- Internet Group Management Protocol (IGMP)
- Address Resolution Protocol (ARP)

You deploy OTV on edge devices in each site. OTV requires no other changes to the sites or to the transport network.

- [Finding Feature Information, page 4](#)
- [Prerequisites for OTV, page 4](#)
- [Restrictions for OTV, page 4](#)
- [Information About OTV, page 5](#)
- [How to Configure OTV, page 16](#)
- [Configuration Examples for OTV Features, page 29](#)
- [Verifying the OTV Configuration, page 36](#)
- [Additional References, page 37](#)
- [Feature Information for OTV, page 38](#)

Finding Feature Information

Your software release may not support all the features documented in this module. For the latest caveats and feature information, see [Bug Search Tool](#) and the release notes for your platform and software release. To find information about the features documented in this module, and to see a list of the releases in which each feature is supported, see the feature information table.

Use Cisco Feature Navigator to find information about platform support and Cisco software image support. To access Cisco Feature Navigator, go to www.cisco.com/go/cfn. An account on Cisco.com is not required.

Prerequisites for OTV

You must have basic understanding of routing, switching, and multicast concepts.

Restrictions for OTV

- Configure the join interface and all Layer 3 interfaces that face the IP core between the OTV edge devices with the highest maximum transmission unit (MTU) size supported by the IP core. OTV sets the Don't Fragment (DF) bit in the IP header for all OTV control and data packets so that the core cannot fragment these packets.
- Ensure that PIM is not enabled on the join interface; enable only passive PIM on the join interface. Configure SSM for the OTV data group multicast address range by using the **ip pim passive** command.
- Ensure that a site identifier is configured and is the same for all edge devices in a same site. OTV brings down all overlays and generates a system message when it detects a mismatched site identifier from a neighbor edge device.
- Only one internal interface (site-facing interface) can be configured on an edge device for all the overlays, multiple internal interface's are not supported.
- Only physical interfaces/sub-interfaces/port-channel can be used as join-interfaces, GRE tunnels and loopback interfaces are not supported.
- OTV is compatible only with a transport network configured for IPv4. IPv6 is not supported.
- OTV cannot be configured on the same router on which Multiprotocol Label Switching (MPLS) is configured. If you try to configure an overlay interface on a router where MPLS is already configured, OTV creation will fail. Similarly, if you try to create an MPLS on a router where OTV is configured, MPLS creation will fail. You can remove a failed overlay interface configuration by using the **no interface overlay x** command.
- The transport network must support the Protocol Independent Multicast (PIM) sparse mode (Any Source Multicast [ASM]) for the provider multicast group and Source Specific Multicast (SSM) for the delivery group.
- If the device is not configured with OTV, the show bridge-domain command does not display any output.
- Overlay Transport Virtualization (OTV) and Cisco Unified Border Element (Cisco UBE) cannot interoperate with each other on Cisco IOS XE software.

Information About OTV

Functions of OTV

- Maintains a list of overlays
- Maintains a list of configured overlay parameters such as name, multicast address, encapsulation type, authentication, and OTV feature sets
- Maintains the state of the overlay interface
- Maintains the status of OTV VLAN membership from Ethernet infrastructure and the state of the authoritative edge device (AED) from IS-IS
- Maintains a database of overlay adjacencies as reported by IS-IS
- Maintains IP tunnel information and manages the encapsulation for data sent on the overlay network
- Manages delivery groups (DGs) for each overlay by snooping multicast traffic and monitoring traffic streams for active DGs
- Configures, starts, and stops the OTV IS-IS instance
- Interfaces with IP multicast to join provider multicast groups for each overlay

OTV Terms

Table 1: OTV Terms

Term	Description
Edge device	A device that performs typical Layer 2 learning and forwarding on its internal interface (site-facing interface) and IP-based virtualization on transport-facing interfaces. OTV functionality occurs only in an edge device. You can configure multiple overlay interfaces on an edge device. You can also have multiple edge devices in the same site.
Authoritative edge device (AED)	An elected edge device that serves as the forwarder. OTV elects a forwarding device per site for each VLAN and designates the forwarding device as an AED. OTV provides loop-free multihoming by using this AED. The edge devices in a site communicate with each other through internal interfaces to elect an AED.

Term	Description
Transport network	<p>A network that connects OTV sites.</p> <p>A transport network can be managed by customers or provided by a service provider or be a mix of both. OTV is compatible only with a transport network configured for IPv4. IPv6 is not supported.</p>
Join interface	<p>An uplink interface of an edge device.</p> <p>A join interface is a point-to-point routed interface. An edge device joins an overlay network through this interface. The IP address of this interface is used to advertise the reachability of a MAC address in a site.</p> <p>Both Ethernet and Packet over SONET (POS) interfaces are supported as join interfaces.</p> <p>The join interface connects the edge device to the transport network and it should be a Layer-3 interface.</p>
Internal interface (site-facing interface)	<p>A Layer 2 interface on an edge device that connects to the VLANs that are to be extended.</p> <p>These VLANs typically form a Layer 2 domain known as a site and can contain site-based switches or site-based routers. An internal interface is a Layer 2 access interface or a trunk interface regardless of whether the internal interface connects to a switch or a router.</p>
MAC-in-IP Routing	<p>The type of routing that associates the destination MAC address of the Layer 2 traffic with the join interface IP address of an edge device.</p> <p>The OTV control-plane protocol advertises the MAC-in-IP association to edge devices. In MAC routing, MAC addresses are reachable in an overlay network through the IP address of a remote edge device. Layer 2 traffic that is destined to a MAC address is encapsulated in an IP packet based on the MAC-in-IP mapping stored in the MAC table.</p>
Overlay interface	<p>A logical, multiaccess, multicast-capable interface.</p> <p>An overlay interface encapsulates Layer 2 frames in IP unicast or multicast headers.</p>
Overlay network	<p>A logical network that interconnects remote sites for MAC routing of Layer 2 traffic.</p> <p>An overlay network comprises multiple edge devices.</p>

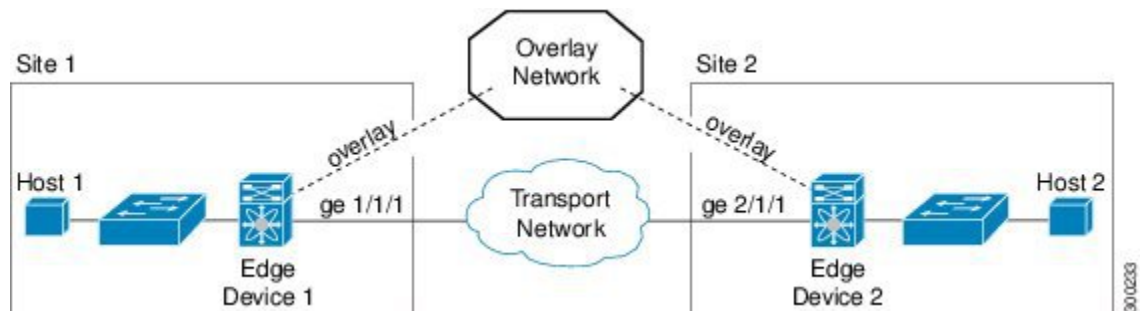
Term	Description
Site	<p>A Layer 2 network that may be single-homed or multihomed to the transport network and the OTV overlay network.</p> <p>Edge devices that operate in an overlay network provide Layer 2 connectivity between sites. Layer 2 sites are physically separated from each other by the transport network.</p>
Site VLAN	<p>A dedicated VLAN on which an internal adjacency is established.</p> <p>OTV sends local hello messages on the site VLAN to detect other OTV edge devices in the same site. OTV also uses the site VLAN to determine the AED within edge devices in the same site.</p> <p>We recommend that you use a dedicated VLAN as a site VLAN. You should also ensure the following:</p> <ul style="list-style-type: none"> • Site VLAN should be active on the internal interface of the edge device. • Site VLAN is not extended across the overlay.

OTV Overlay Network

An OTV overlay network provides Layer 2 connectivity between remote sites over a transport network. An overlay network consists of one or more edge devices in each site. The sites are interconnected using a control-plane protocol across the transport network.

The figure below shows two sites connected through edge devices to a transport network to create a virtual overlay network.

Figure 1: OTV Overlay Network



An overlay network maps MAC addresses of the hosts at a site to their respective edge devices IP addresses. After OTV identifies the edge device to which a Layer 2 frame is to be sent, OTV encapsulates the frame and sends the resulting IP packet by using the transport network routing protocols.

OTV can support more than one overlay network running IPv4 unicast forwarding or multicast flooding. Each overlay network can support more than one unique VLAN.

**Note**

OTV does not extend Spanning Tree Protocol (STP) across sites. Each site runs its own STP instead of all sites being included in a large STP domain. This per-site STP topology allows the use of different STP modes, such as Per-VLAN Spanning Tree (PVST), Rapid-PVST, or Multiple Spanning Tree (MST), in each site.

Edge Devices

Each site consists of one or more edge devices and other internal routers, switches, or servers. OTV is configured only on an edge device. The OTV configuration is completely transparent to the rest of the site. For example, information about MAC learning, STP root bridge placement, and STP mode is transparent. An edge device has an internal interface that is part of the Layer 2 network and an external interface that is reachable through IP in the transport network.

An edge device performs typical Layer 2 learning and forwarding on its internal interface and transmits and receives encapsulated Layer 2 traffic on its join interface through the transport network. An edge device sends and receives control-plane traffic through the join interface. The control-plane traffic exchanges reachability information between remote sites to build up a table that maps MAC addresses to the join interface IP address of the edge device that is local to that site.

Site-to-Site Connectivity

OTV builds Layer 2 reachability information by communicating between edge devices with the overlay protocol. The overlay protocol forms adjacencies with all edge devices. After each edge device is adjacent with all its peers in an overlay network, the edge devices share MAC address reachability information with other edge devices that participate in the same overlay network.

OTV discovers edge devices through dynamic neighbor detection, which leverages the multicast support of the core.

Overlay Networks Mapping to Multicast Groups

For transport networks that support IP multicast, one multicast address (the control-group address) is used to encapsulate and exchange OTV control-plane protocol updates. Each edge device that participates in a particular overlay network shares the same control-group address with all other edge devices of the same overlay network. As soon as a control-group, data-group address and a join interface are configured on an edge device, the edge device sends an IGMP report message to join the control group. Edge devices act as hosts in the multicast network and send multicast IGMP report messages to the assigned multicast group address.

As in traditional link-state routing protocols, edge devices exchange OTV control-plane hellos to build adjacencies with other edge devices in the overlay network. After adjacencies are established, OTV control-plane link-state packets (LSPs) communicate MAC-to-IP mappings to adjacent edge devices. These LSPs contain the IP address of the remote edge device, VLAN IDs, and the learned MAC addresses that are reachable through that edge device.

Edge devices participate in data-plane learning on internal interfaces to build up the list of MAC addresses that are reachable within their site. OTV sends these locally learned MAC addresses in the OTV control-plane updates.

OTV Packet Flow

When an edge device receives a Layer 2 frame on an internal interface, OTV performs the MAC table lookup based on the destination address of the Layer 2 frame. If the frame is destined to a MAC address that is reachable locally, the frame is internally forwarded to that device. OTV performs no other actions and the processing of the frame is complete.

If the frame is destined to a MAC address learned over an overlay network, OTV performs the following tasks:

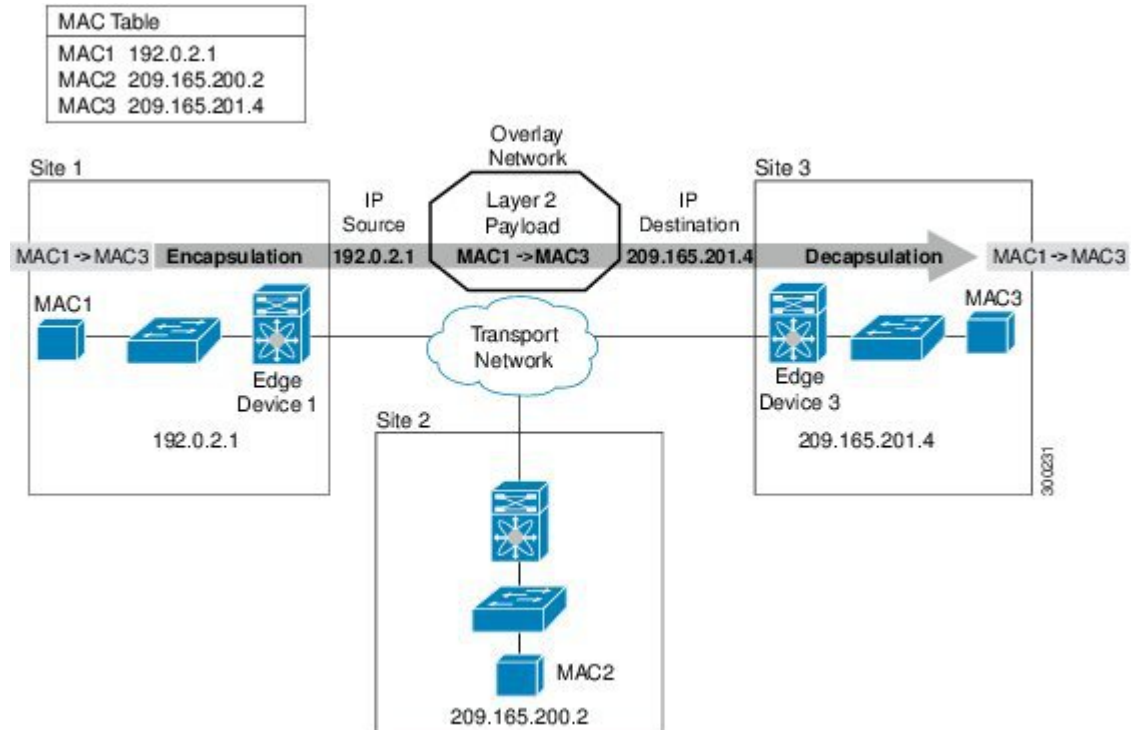
- 1 Strips the preamble and frame check sequence (FCS) from the Layer 2 frame.
- 2 Adds an OTV header to the Layer 2 frame and copies the 802.1Q information into the OTV header.
- 3 Adds the IP address to the packet based on the initial MAC address table lookup. This IP address is used as the destination address for the IP packet that is sent over the transport network.

OTV traffic appears as IP traffic to the transport network.

At the destination site, the edge device performs the reverse operation and presents the original Layer 2 frame to the local site. The edge device, based on the local MAC address table forwards the frame on its internal interface.

The figure below shows the encapsulation and decapsulation of a MAC-routed packet across an overlay network.

Figure 2: MAC Routing



In the figure above, Site 1 communicates with Site 3 over the overlay network. Edge Device 1 receives the Layer 2 frame from MAC1 and looks up the destination MAC address, MAC3, in the MAC table. The edge device encapsulates the Layer 2 frame in an IP packet with the IP destination address set for Edge Device 3 (209.165.201.4). When Edge Device 3 receives the IP packet, the edge device strips off the IP header and sends the original Layer 2 frame over its internal interface to reach the host having MAC address MAC3.

Mobility

OTV uses a metric value to support seamless MAC mobility.

When an AED learns a new MAC address, the AED advertises the new address in OTV control-plane updates with a metric value of one if no other edge device has advertised that MAC address before.

In the case of a mobile MAC address, an AED advertises the newly learned, local MAC address with a metric value of zero. This metric value signals the remote edge device to stop advertising that MAC address. After the remote edge device stops advertising the moved MAC address, the AED that contains the new MAC address changes the metric value to one.

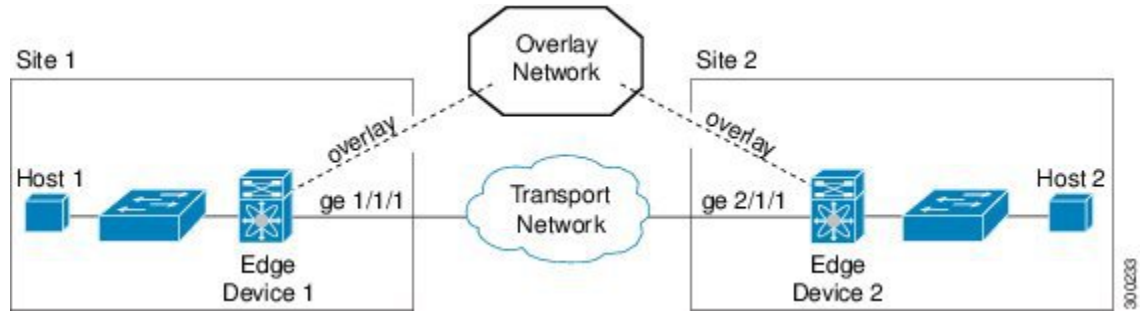
Virtual machine (VM) mobility is one common example of MAC mobility. VM mobility occurs when the virtual machine moves from one site to another. OTV detects this change based on the changed advertisement of the mobile MAC address.

Sample OTV Topologies

You can use OTV to connect remote sites in multiple topologies.

Single-Homed Network

Figure 3: Basic Two-Site OTV Topology

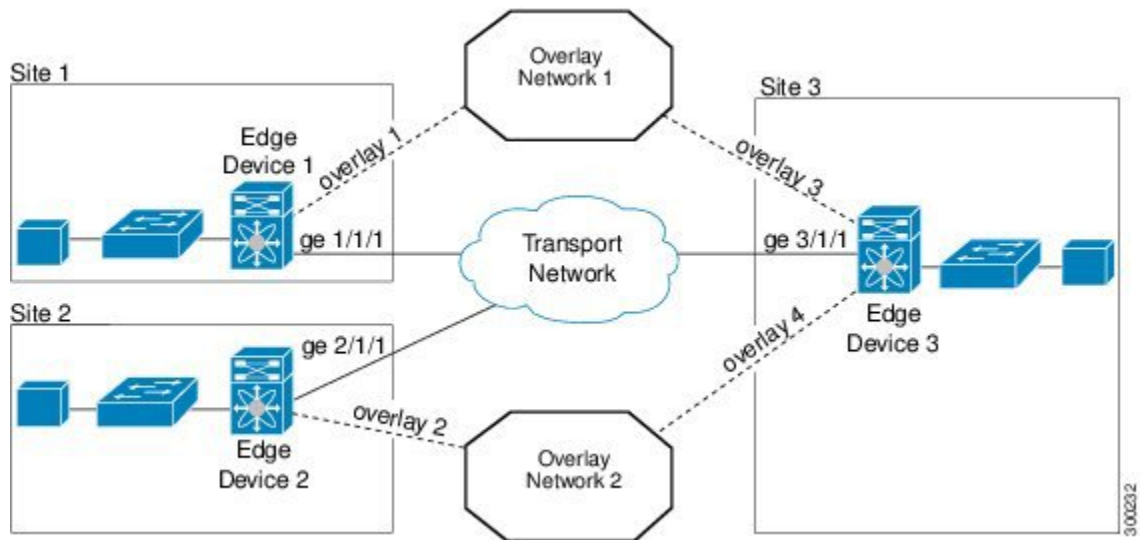


In this sample topology, both sites are connected over a common transport network. The edge devices in both the sites have an overlay interface configured (interface overlay 1 and interface overlay 2) with the same control-group address, which makes both the edge devices join a common overlay network.

Multiple Overlay Networks

You can configure an edge device in more than one overlay network. Each overlay network use different control and data group multicast addresses.

Figure 4: Two Overlay Networks



In the figure above, Site 3 connects to Site 1 over Overlay Network 1 through overlay interface 3 on Edge Device 3. Site 3 also connects to Site 2 over Overlay Network 2 through overlay interface 4 on Edge Device 3. Each overlay network has different control-group and data-group addresses.



Note The VLAN's extended across different overlay network's should be unique.

Site 3 uses Edge Device 3 to connect to both the overlay networks—Overlay Network 1 and Overlay Network 2. Edge Device 3 associates the same physical interface for both the overlay networks.

Multihomed Sites and Load Balancing

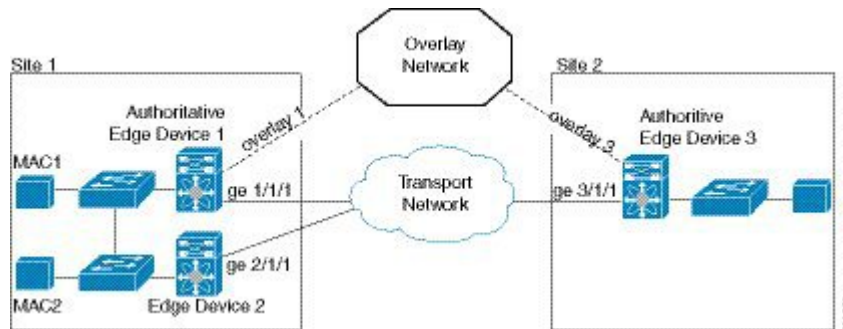
For resiliency and load balancing, a site can have multiple edge devices.

When more than one edge device exists in a site and both participate in the same overlay network, the site is considered multihomed. For the VLANs that are extended using OTV, one edge device is elected as an AED on a per-VLAN basis. OTV leverages a local VLAN to establish an adjacency between edge devices on their internal interfaces. The local VLAN that is shared by the internal interfaces is the site VLAN. The adjacency establishment over the site VLAN determines which edge device is authoritative for what VLANs.

Load balancing is achieved because each edge device is authoritative for a subset of all VLANs that are transported over the overlay. Link utilization to and from the transport is optimized.

The figure below shows the AED that is selected for a multihomed site in an overlay network.

Figure 5: Multihomed Site



In the figure above, Site 1 is a multihomed site with two physical interfaces connected to the transport network.

Dual Site Adjacency

Dual site adjacency includes adjacency discovery over the overlay network and in the existing site VLAN. Dual site adjacency introduces additional resiliency and loop prevention. Loops may be caused by site VLAN partition or misconfiguration. Dual site adjacency also uses forwarding readiness notifications to detect when neighbor edge devices in the same site experience a change such as local failures (for example, the site VLAN or extended VLANs going down or the join interface going down). These forwarding readiness notifications trigger an immediate AED election for the site.

OTV sends forwarding readiness notifications to all neighbors of an edge device in the following isolation states:

- Site isolation: All extended VLANs on an edge device go down.

- Core isolation: All overlay adjacencies go down.

The dual site adjacency state results from the most recent adjacency state for either the overlay or the site VLAN adjacency. OTV determines AED election based on active dual site adjacencies only. An inactive dual site adjacency is ignored for AED election.

You must configure the same site identifier for all edge devices in a site. OTV advertises this site identifier in the IS-IS hello packets sent over the overlay network and on the local site VLAN. The combination of the IS-IS system ID and site identifier uniquely identifies the edge devices in a site.

OTV Features

The OTV control-plane creates adjacencies between remote sites to provide Layer 2 connectivity over a transport network. An OTV network performs the following functions:

- Discovers remote sites and builds a control-protocol adjacency
- Shares MAC routing information across an overlay network

An overlay network consists of one or more logical overlay interfaces that are configured on an edge device in each remote site that connects to the physical transport network. You associate the logical overlay interface with a physical interface (join-interface) that connects to the transport network. The OTV control plane is responsible for discovering edge devices in remote sites, creating control-protocol adjacencies to these sites, and establishing protocol adjacencies among the sites. The OTV control-plane protocol uses the IS-IS protocol to establish adjacencies and exchange MAC reachability across an overlay network.

**Note**

You do not need to configure IS-IS to use OTV. IS-IS is enabled in the background after OTV is enabled.

The OTV control-plane protocol also sends and receives MAC routing updates between remote sites and updates the Routing Information Base (RIB) with these MAC-to-IP address pairs.

Overlay Interface

An overlay interface is a logical interface that connects to remote edge devices in an overlay network through an associated physical interface (join interface) on the transport network. From the perspective of MAC-based forwarding in a site, an overlay interface is simply another bridged interface. As a bridged interface, unicast MAC addresses are associated with an overlay interface. An overlay interface is eligible for inclusion in the Outbound Interface List (OIL) for different multicast groups. However, no STP packets are forwarded over an overlay interface. Unknown unicast packets are also not flooded on an overlay interface. From the perspective of IP transport, an overlay interface is not visible.

OTV encapsulates Layer 2 frames in IP packets and transmits them over the transport network via the join interface.

The following commands must be configured for an overlay interface to be in the up state:

- **no shutdown**
- **otv control-group**
- **otv data-group**
- **otv join-interface**

MAC Address Learning

OTV learns MAC-to-IP address pairs from the following:

- MAC address learning on internal interface
- OTV control-plane updates over an overlay network
- Multicast address learning through IGMP snooping

OTV edge devices snoop IGMP traffic and issue a Group Membership-link-state packet (GM-LSP) to advertise the presence of receivers to remote edge devices. The remote edge devices include the overlay interface in the Outbound Interface List (OIL) for the corresponding multicast group. OTV does not program multicast MAC addresses in the forwarding tables but rather updates the OIL state as necessary.

All learned MAC addresses are stored in the RIB with the associated remote IP addresses.

MAC Address Reachability Updates

The OTV control plane uses IS-IS link-state packets (LSPs) to propagate MAC address to IP address mappings to all edge devices in an overlay network. These address mappings contain the MAC address, VLAN ID, and the associated IP address of the edge device that the MAC address is reachable from.

An AED uses IGMP snooping to learn all multicast IP addresses in the local site. OTV includes these IP addresses in a special GM-LSP that is sent to remote edge devices in an overlay network.

Multicast Group Addresses and IGMP Snooping

OTV uses the control-group multicast address that is assigned from the transport network to create a unique multicast group between remote sites on an overlay network. Each edge device in an overlay network acts as a multicast host and sends an IGMP report message to join the control-group multicast address. OTV sends encapsulated OTV control-plane hello messages and MAC routing updates across this multicast group.

OTV uses IGMP snooping and group membership advertisements (GM-LSPs) to learn all multicast group members from remote sites. OTV also uses IGMP snooping to detect all multicast groups in a local site.

ARP Cache

OTV can suppress unnecessary ARP messages from being sent over an overlay network. OTV builds a local Layer 3-to-Layer 2 mapping for remote hosts. Any ARP requests from local hosts are served by this ARP cache.

High Availability

OTV supports stateless switchovers. A stateful switchover occurs when the active supervisor switches to the standby supervisor. There may be a few seconds of traffic loss while the OTV tunnel is recreated following a switchover.

OTV IS-IS

OTV uses the IS-IS protocol for control-plane learning of MAC entries. The OTV IS-IS component is responsible for transporting MAC information across all VPN sites. It carries unicast and multicast MAC information encoded in type, length, values (TLVs).

On the internal interface, OTV IS-IS is responsible for sending IS-IS hello (IIH) packets on the site VLAN by using a multicast MAC destination address. Using a multicast MAC address ensures that all Layer 2 switches in a site forward the packet and that the packet reaches all other OTV edge devices. Each site has a configured site ID. The site ID is advertised by each edge device in these IS-IS hello messages. The site ID is used to identify all edge devices belonging to the same site. IS-IS assigns an AED for each VLAN. The AED for a VLAN is the edge device responsible for announcing local MACs for a given VLAN to remote sites and accepting packets destined for that VLAN.

On the overlay interface, OTV IS-IS is responsible for sending out IIH packets with site ID TLV on the multicast control-group. Using the control-group multicast ensures that all remote sites participating in the overlay network are automatically discovered and an adjacency is formed among all edge devices belonging to the same overlay network. OTV IS-IS also informs OTV whenever a new neighbor is discovered.

OTV IS-IS also handles fast MAC moves between remote sites and the local site and guards against fast oscillations in the event of misconfigurations where the same MAC address is used in multiple sites.

OTV IS-IS Instances

The creation of an overlay interface triggers the creation of an OTV IS-IS instance. OTV IS-IS supports multiple overlays. There is a one-to-one relationship between an OTV IS-IS instance and an overlay interface. OTV IS-IS discovers neighbors, forms adjacencies, and exchanges unicast MAC and multicast group information per overlay. All IS-IS databases, such as the adjacency database and the LSP database, are maintained per overlay.

OTV IS-IS forms only level-1 adjacencies. It advertises the primary IP address of the join interface in its hellos and protocol data units (PDUs). This address along with the system ID of the neighbor is added to OTV, which stores this information in its overlay adjacency database.

OTV IS-IS MLRIB Interactions

OTV IS-IS is a client of Multilayer Routing Information Base (MLRIB) for Layer 2. OTV IS-IS registers with MLRIB to get notifications for all local Layer 2 unicast and multicast address additions or deletions. Unicast MAC address information is put in OTV IS-IS LSPs, while multicast address information is put in OTV IS-IS multicast group PDUs for flooding to all remote sites.

Based on neighbor LSP advertisements, OTV IS-IS adds MAC reachability information for remote unicast and multicast group addresses to MLRIB. When OTV is disabled on a VLAN (the VLAN is removed from the list of OTV-advertised VLANs), OTV IS-IS withdraws the remote reachability information from MLRIB.

How to Configure OTV

Creating an Overlay Interface

An overlay interface is a logical interface that connects to remote edge devices in an overlay network through an associated physical or port-channel interface (join-interface) on the transport network. After creating an overlay interface, you must associate the overlay interface with a join interface and configure control and data-group multicast addresses. For more information, see the “Associating an Overlay Interface with a Join Interface” and “Configuring a Multicast Group Address” sections.

SUMMARY STEPS

1. **enable**
2. **configure terminal**
3. **interface overlay *interface***
4. **no shutdown**
5. **otv vpn-name *name***
6. **description *string***
7. **end**

DETAILED STEPS

	Command or Action	Purpose
Step 1	enable Example: Device> enable	Enables privileged EXEC mode. • Enter your password if prompted.
Step 2	configure terminal Example: Device# configure terminal	Enters global configuration mode.
Step 3	interface overlay <i>interface</i> Example: Device(config)# interface overlay 1	Creates an OTV overlay interface and enters interface configuration mode. • The range is from 0 to 512.
Step 4	no shutdown Example: Device(config-if)# no shutdown	Brings up the OTV overlay interface.
Step 5	otv vpn-name <i>name</i>	(Optional) Creates an alias for the OTV overlay interface name.

	Command or Action	Purpose
	Example: Device(config-if)# otn vpn-name overlay1	<ul style="list-style-type: none"> The alias name is case-sensitive and must be no more than 20 alphanumeric characters in length.
Step 6	description <i>string</i> Example: Device(config-if)# description site4	(Optional) Adds a description for the overlay network. <ul style="list-style-type: none"> The description string can be up to 200 characters in length.
Step 7	end Example: Device(config-if)# end	Exits interface configuration mode and returns to privileged EXEC mode.

Associating an Overlay Interface with a Physical Interface

Before you associate an overlay interface with a physical interface, ensure that IGMP Version 3 (IGMPv3) is configured on the physical Layer 3 interface that you configure as the join interface.

After creating an overlay interface, perform this task to associate the overlay interface with a join interface. Define a physical Layer 3 interface as the join interface for the overlay interface, and associate the same with the overlay interface.

SUMMARY STEPS

1. **enable**
2. **configure terminal**
3. **interface overlay** *interface*
4. **otn join-interface** *type number*
5. **end**

DETAILED STEPS

	Command or Action	Purpose
Step 1	enable Example: Device> enable	Enables privileged EXEC mode. <ul style="list-style-type: none"> Enter your password if prompted.
Step 2	configure terminal Example: Device# configure terminal	Enters global configuration mode.

	Command or Action	Purpose
Step 3	interface overlay <i>interface</i> Example: Device(config)# interface overlay 1	Creates an OTV overlay interface and enters interface configuration mode. <ul style="list-style-type: none"> • The range is from 0 to 512.
Step 4	otv join-interface <i>type number</i> Example: Device(config-if)# otv join-interface gigabitethernet 0/0/2	Joins the OTV overlay interface with a physical Layer 3 interface. <ul style="list-style-type: none"> • You must configure an IP address on the physical interface. • You can specify only one join interface per overlay. • A single join interface on a edge device is shared across all overlays.
Step 5	end Example: Device(config-if)# end	Exits interface configuration mode and returns to privileged EXEC mode.

What to Do Next

To enable unicast and multicast IP forwarding on a join interface, perform the following tasks after creating the join interface:

- Configure the IP address and mask for the join interface by using the **ip address** command.
- Configure the join interface to operate in Protocol Independent Multicast (PIM) passive mode by using the **ip pim passive** command.
- Enable IP multicast routing by using the **ip multicast-routing distributed** command.
- Configure IGMPv3 on the join interface by using the **ip igmp version 3** command.
- The following commands are also necessary to be added globally to ensure multicast forwarding happens - these commands enable IGMP snooping on the internal interface:

ip igmp snooping querier version 3

ip igmp snooping querier

Configuring a Multicast Group Address

Perform this task to configure a unique multicast group address for each overlay network.

SUMMARY STEPS

1. **enable**
2. **configure terminal**
3. **interface overlay *interface***
4. **otv control-group *multicast-address***
5. **otv data-group *multicast-address/mask***
6. **end**

DETAILED STEPS

	Command or Action	Purpose
Step 1	enable Example: Device> enable	Enables privileged EXEC mode. <ul style="list-style-type: none"> • Enter your password if prompted.
Step 2	configure terminal Example: Device# configure terminal	Enters global configuration mode.
Step 3	interface overlay <i>interface</i> Example: Device(config)# interface overlay 1	Creates an OTV overlay interface and enters interface configuration mode. <ul style="list-style-type: none"> • The range is from 0 to 512.
Step 4	otv control-group <i>multicast-address</i> Example: Device(config-if)# otv control-group 239.1.1.1	Configures a multicast group address used by the OTV control plane for this OTV overlay network. <ul style="list-style-type: none"> • The multicast group address is an IPv4 address in dotted decimal notation.
Step 5	otv data-group <i>multicast-address/mask</i> Example: Device(config-if)# otv data-group 232.1.1.0/28	Configures one or more ranges of local IPv4 multicast data-group prefixes used for multicast data traffic. <ul style="list-style-type: none"> • Use SSM multicast groups 232.0.0.0/8. • Enable SSM for the groups by using the ip pim ssm command in global configuration mode. • The multicast group address is an IPv4 address in dotted decimal notation. • A subnet mask is used to indicate ranges of addresses. • You can define up to 8 data-group ranges.

	Command or Action	Purpose
Step 6	end Example: Device(config-if)# end	Exits interface configuration mode and returns to privileged EXEC mode.

Configuring a VLAN over an Overlay Interface

Before configuring a VLAN over an overlay interface, ensure that there is connectivity for VLANs to be extended to the OTV edge device.

Ethernet service instances are configured with VLAN encapsulation on an overlay interface to define the VLANs that are part of an overlay network. MAC addresses learned on the service instances' bridge domains are advertised to other edge devices on the overlay along with the service instances' VLAN.

SUMMARY STEPS

1. **enable**
2. **configure terminal**
3. **interface overlay *interface***
4. **service instance *interface* ethernet**
5. **encapsulation dot1q *vlan-ID***
6. **bridge-domain *bridge-domain-ID***
7. **end**

DETAILED STEPS

	Command or Action	Purpose
Step 1	enable Example: Device> enable	Enables privileged EXEC mode. <ul style="list-style-type: none"> • Enter your password if prompted.
Step 2	configure terminal Example: Device# configure terminal	Enters global configuration mode.
Step 3	interface overlay <i>interface</i> Example: Device(config)# interface overlay 1	Creates an OTV overlay interface and enters interface configuration mode. <ul style="list-style-type: none"> • The range is from 0 to 512.

	Command or Action	Purpose
Step 4	service instance <i>interface ethernet</i> Example: Device(config-if)# service instance 20 ethernet	Configures an Ethernet service instance on the overlay interface being configured and enters service instance configuration mode. <ul style="list-style-type: none"> • The service instance identifier range is from 1 to 8000.
Step 5	encapsulation dot1q <i>vlan-ID</i> Example: Device(config-if-srv)# encapsulation dot1q 20	Defines the VLAN encapsulation format as IEEE 802.1Q and specifies the VLAN identifier.
Step 6	bridge-domain <i>bridge-domain-ID</i> Example: Device(config-if-srv)# bridge-domain 20	Binds the specified bridge domain to a service instance.
Step 7	end Example: Device(config-if-srv)# end	Exits service instance configuration mode and returns to privileged EXEC mode.

Configuring the Site Bridge Domain and the Site Identifier

A site bridge domain is used by OTV to identify the service instance where local hello messages should be sent. There should be an Ethernet service instance configured with the site bridge domain on the internal interface. OTV uses the configured VLAN encapsulation (if any) from this service instance to encapsulate local hello messages before sending out a message from the local interface.

A site identifier is advertised by each edge device in an overlay network and is used to identify all edge devices belonging to the same site. All edge devices in the same site should be configured with the same site identifier.

SUMMARY STEPS

1. **enable**
2. **configure terminal**
3. **otv site bridge-domain** *bridge-domain-ID*
4. **exit**
5. **otv site-identifier** *site-ID*
6. **end**

DETAILED STEPS

	Command or Action	Purpose
Step 1	enable Example: Device> enable	Enables privileged EXEC mode. <ul style="list-style-type: none"> • Enter your password if prompted.
Step 2	configure terminal Example: Device# configure terminal	Enters global configuration mode.
Step 3	otv site bridge-domain <i>bridge-domain-ID</i> Example: Device(config)# otv site bridge-domain 10	Configures the site bridge domain for sending IS-IS hellos over site interfaces and enters OTV site configuration mode. <ul style="list-style-type: none"> • The <i>bridge-domain-ID</i> range is from 1 to 4096. • One Ethernet service instance should be configured on the internal interface with the same bridge domain ID.
Step 4	exit Example: Device(config-otv-site)# exit	Exits OTV site configuration mode and returns to global configuration mode.
Step 5	otv site-identifier <i>site-ID</i> Example: Device(config)# otv site-identifier 0000.0000.0001	Configures the site identifier. <ul style="list-style-type: none"> • The same site identifier on all OTV edge devices should be configured belonging to the same site. • The site identifier should be unique across different sites. • The range is from 0x1 to 0xFFFFFFFF. The format is either hexadecimal or MAC address format.
Step 6	end Example: Device(config)# end	Exits global configuration mode and returns to privileged EXEC mode.

Example

The following sample output shows the configuration of overlay interface 1:

```
Device#show running-config interface gigabitEthernet 0/0/2
!
interface GigabitEthernet0/0/2
description "Join Interface"
ip address 209.165.201.1 255.255.255.224
ip pim passive
ip igmp version 3
negotiation auto
```

```

end

Device#
Device#show running-config interface GigabitEthernet0/0/0
!
interface GigabitEthernet0/0/0
description "Internal Interface"
no ip address
negotiation auto
service instance 10 ethernet
  encapsulation dot1q 10
  bridge-domain 10
!
service instance 20 ethernet
  encapsulation dot1q 20
  bridge-domain 20
!
Device#
Device#show otv overlay1
Overlay Interface Overlay1
  VPN name           : overlay1
  VPN ID             : 1
  State              : UP
  Fwd-capable        : Yes
  Fwd-ready          : Yes
  AED-Server         : Yes
  Backup AED-Server  : No
  AED Capable        : Yes
  IPv4 control group : 239.1.1.1
  Mcast data group range(s): 232.1.1.0/28
  Join interface(s)  : GigabitEthernet0/0/2
  Join IPv4 address  : 209.165.201.1
  Tunnel interface(s) : Tunnel0
  Encapsulation format : GRE/IPv4
  Site Bridge-Domain : 10
  Capability          : Multicast-reachable
  Is Adjacency Server : No
  Adj Server Configured : No
  Prim/Sec Adj Svr(s) : None

Device#
Device#show otv overlay 1 vlan

Overlay 1 VLAN Configuration Information
  Inst VLAN BD   Auth ED           State           Site If(s)
  0    20 20 *Device           active           Gi0/0/0:SI20
  Total VLAN(s): 1

Device#

```

Configuring Authentication for OTV IS-IS Hellos

You can configure authentication for OTV IS-IS hello messages. OTV uses hello authentication to authenticate a remote site before OTV creates an adjacency to that remote site. Each overlay network uses a unique authentication key. An edge device creates an adjacency only with a remote site that shares the same authentication key and authentication method.

OTV supports the following authentication methods:

- Clear text
- Message digest algorithm 5 (MD5)

SUMMARY STEPS

1. **enable**
2. **configure terminal**
3. **interface overlay *interface***
4. **otv isis authentication mode {md5 | text}**
5. **otv isis authentication key-chain *key-chain-name***
6. **end**

DETAILED STEPS

	Command or Action	Purpose
Step 1	enable Example: Device> enable	Enables privileged EXEC mode. • Enter your password if prompted.
Step 2	configure terminal Example: Device# configure terminal	Enters global configuration mode.
Step 3	interface overlay <i>interface</i> Example: Device(config)# interface overlay 1	Creates an OTV overlay interface and enters interface configuration mode. • The range is from 0 to 512.
Step 4	otv isis authentication mode {md5 text} Example: Device(config-if)# otv isis authentication mode md5	Configures the authentication method.
Step 5	otv isis authentication key-chain <i>key-chain-name</i> Example: Device(config-if)# otv isis authentication key-chain OTVkey	Configures an authentication key chain for edge device authentication. • The key-chain name is case-sensitive. Note The key-chain should be already configured on the edge device.
Step 6	end Example: Device(config-if)# end	Exits interface configuration mode and returns to privileged EXEC mode.

Configuring Authentication for OTV IS-IS PDUs

Configure OTV to authenticate all incoming OTV IS-IS PDUs.

SUMMARY STEPS

1. **enable**
2. **configure terminal**
3. **otv isis overlay** *overlay-interface*
4. **authentication mode** {md5 | text}
5. **authentication key-chain** *key-chain-name*
6. **end**

DETAILED STEPS

	Command or Action	Purpose
Step 1	enable Example: Device> enable	Enables privileged EXEC mode. • Enter your password if prompted.
Step 2	configure terminal Example: Device# configure terminal	Enters global configuration mode.
Step 3	otv isis overlay <i>overlay-interface</i> Example: Device(config)# otv isis overlay 1	Creates an OTV IS-IS instance and enters OTV IS-IS configuration mode. • The range is from 0 to 512.
Step 4	authentication mode {md5 text} Example: Device(config-otv-isis)# authentication mode md5	Configures the authentication method.
Step 5	authentication key-chain <i>key-chain-name</i> Example: Device(config-otv-isis)# authentication key-chain OTVkey	Configures the authentication key chain for PDU authentication. • The key-chain name is case-sensitive. Note The key-chain should be already configured on the edge device.
Step 6	end Example: Device(config-otv-isis)# end	Exits OTV IS-IS configuration mode and returns to privileged EXEC mode.

Disabling ARP Caching

An ARP cache is maintained by every OTV edge device and is populated by snooping ARP replies. Initial ARP requests are broadcast to all sites, but subsequent ARP requests are suppressed at the edge device and answered locally. OTV edge devices respond to ARP requests on behalf of remote hosts. Perform this task to allow ARP requests over an overlay network and to disable ARP caching on OTV edge devices.

SUMMARY STEPS

1. **enable**
2. **configure terminal**
3. **interface overlay *interface***
4. **no otv suppress arp-nd**
5. **end**
6. **show otv [*overlay overlay-interface*] arp-nd-cache**

DETAILED STEPS

	Command or Action	Purpose
Step 1	enable Example: Device> enable	Enables privileged EXEC mode. • Enter your password if prompted.
Step 2	configure terminal Example: Device# configure terminal	Enters global configuration mode.
Step 3	interface overlay <i>interface</i> Example: Device(config)# interface overlay 1	Creates an OTV overlay interface and enters interface configuration mode. • The range is from 0 to 512.
Step 4	no otv suppress arp-nd Example: Device(config-if)# no otv suppress arp-nd	Allows ARP requests over an overlay network and disables ARP caching on edge devices. • This command does not support IPv6.
Step 5	end Example: Device(config-if)# end	Exits interface configuration mode and returns to privileged EXEC mode.

	Command or Action	Purpose
Step 6	show otv [overlay <i>overlay-interface</i>] arp-nd-cache Example: Device# show otv arp-nd-cache	(Optional) Displays the OTV Layer 2 to Layer 3 address mapping cache used for ARP suppression.

Tuning OTV Parameters

You can tune parameters for the overlay routing protocol.



Note

We recommend that only experienced users of OTV perform these configurations.

SUMMARY STEPS

1. **enable**
2. **configure terminal**
3. **interface overlay *interface***
4. **otv isis csnp-interval *seconds***
5. **otv isis hello-interval [*seconds* | **minimal**]**
6. **otv isis hello-multiplier *multiplier***
7. **no otv isis hello padding**
8. **otv isis lsp-interval *milliseconds***
9. **otv isis metric {*metric* | **maximum**} [*delay-metric* | *expense-metric* | *error-metric*]**
10. **otv isis priority *value***
11. **end**

DETAILED STEPS

	Command or Action	Purpose
Step 1	enable Example: Device> enable	Enables privileged EXEC mode. <ul style="list-style-type: none"> • Enter your password if prompted.
Step 2	configure terminal Example: Device# configure terminal	Enters global configuration mode.

	Command or Action	Purpose
Step 3	interface overlay <i>interface</i> Example: Device(config)# interface overlay 1	Creates an OTV overlay interface and enters interface configuration mode.
Step 4	otv isis csnp-interval <i>seconds</i> Example: Device(config-if)# otv isis csnp-interval 100	(Optional) Specifies the interval between complete sequence number PDUs (CSNPs) sent on an interface. Default interval value is 10.
Step 5	otv isis hello-interval [<i>seconds</i> minimal] Example: Device(config-if)# otv isis hello-interval 30	(Optional) Specifies the interval between hello PDUs on an interface. Default interval value is 10.
Step 6	otv isis hello-multiplier <i>multiplier</i> Example: Device(config-if)# otv isis hello-multiplier 30	(Optional) Specifies the multiplier that is used to calculate the interval within which hello PDUs must be received to keep the OTV adjacency up. Default multiplier value is 3.
Step 7	no otv isis hello padding Example: Device(config-if)# no otv isis hello padding	(Optional) Pads OTV hello PDUs to the full MTU length. It is enabled by default.
Step 8	otv isis lsp-interval <i>milliseconds</i> Example: Device(config-if)# otv isis lsp-interval 30	(Optional) Specifies the interval between LSP PDUs on an interface during flooding. Default interval value is 33.
Step 9	otv isis metric { <i>metric</i> maximum } [<i>delay-metric</i> <i>expense-metric</i> <i>error-metric</i>] Example: Device(config-if)# otv isis metric 25	(Optional) Configures the OTV metric on an interface. Default value is 10.
Step 10	otv isis priority <i>value</i> Example: Device(config-if)# otv isis priority 6	(Optional) Configures the OTV priority for the designated router election. Default value is 64.
Step 11	end Example: Device(config-if)# end	Exits interface configuration mode and returns to privileged EXEC mode.

Configuration Examples for OTV Features

Example: Configuring Overlay Interface and VLANs

Virtual Machine (VM1) should be reachable to the edge device 1. In this example, the MAC Address of VM1 is 000b.45b7.82c0.

The following example shows how to configure an edge device 1:

```
Device# 10:52 AM
ip multicast-routing distributed
!
ip igmp snooping querier version 3
ip igmp snooping querier
!
otv site bridge-domain 10
otv site-identifier 0000.0000.0001
!
interface overlay 1
 no shutdown
 otv vpn-name overlay1_sitel
 otv control-group 239.1.1.1
 otv data-group 232.1.1.0/28
 otv join-interface GigabitEthernet 0/0/2
!
 service instance 20 ethernet
  encapsulation dot1q 20
  bridge-domain 20
!

interface GigabitEthernet 0/0/2
 description "Join Interface"
 ip address 209.165.201.1 255.255.255.224
 ip pim passive
 ip igmp version 3
!
interface GigabitEthernet 0/0/0
 description "Internal Interface"
!
 service instance 10 ethernet
  encapsulation dot1q 10
  bridge-domain 10
!
 service instance 20 ethernet
  encapsulation dot1q 20
  bridge-domain 20
!
ip pim ssm default
```

The following example shows how to configure a Switch 1:

```
SW1#show running-config interface GigabitEthernet 0/0
!
interface GigabitEthernet0/0
 description "Connected to Edge Device-1"
 switchport
 switchport trunk encapsulation dot1q
 switchport mode trunk
 mtu 9216
 no ip address
end

SW1#

SW1#show running-config interface GigabitEthernet 0/1
!
interface GigabitEthernet0/1
```

```

description "Connected to VM1"
switchport
switchport access vlan 20
switchport mode access
mtu 9216
no ip address
end

```

SW1#

Virtual Machine (VM2) should be reachable to the edge device 2. In this example, the MAC Address of VM2 is 0013.5f1c.6ec0.

The following example shows how to configure an edge device 2:

```

ip multicast-routing distributed
!
ip igmp snooping querier version 3
ip igmp snooping querier
!
otv site bridge-domain 11
otv site-identifier 0000.0000.0002
!
interface overlay 1
no shutdown
otv vpn-name overlay1_site2
otv control-group 239.1.1.1
otv data-group 232.1.1.0/28
otv join-interface GigabitEthernet 0/0/2
!
service instance 20 ethernet
encapsulation dot1q 20
bridge-domain 20
!

interface GigabitEthernet 0/0/2
description "Join Interface"
ip address 209.165.201.2 255.255.255.224
ip pim passive
ip igmp version 3
!
interface GigabitEthernet 0/0/0
description "Internal Interface"
!
service instance 11 ethernet
encapsulation dot1q 11
bridge-domain 11
!
service instance 20 ethernet
encapsulation dot1q 20
bridge-domain 20
!
ip pim ssm default

```

The following example shows how to configure a Switch 2:

```

SW2#show running-config interface GigabitEthernet 0/0
!
interface GigabitEthernet0/0
description "Connected to Edge Device-2"
switchport
switchport trunk encapsulation dot1q
switchport mode trunk
mtu 9216
no ip address
end

SW2#

SW2#show running-config interface GigabitEthernet 0/1
!
interface GigabitEthernet0/1
description "Connected to VM2"
switchport

```

```

switchport access vlan 20
switchport mode access
mtu 9216
no ip address
end

```

SW2#

The following example shows how to configure OTV using multicast.

```

ip multicast-routing distributed

ip igmp snooping querier version 3
ip igmp snooping querier

otv site bridge-domain 11
otv site-identifier 0000.0000.0002

interface GigabitEthernet0/0/0
description "ACCESS / INTERNAL INTERFACE"
no shutdown
negotiation auto
service instance 11 ethernet
encapsulation dot1q 11
bridge-domain 11
!
service instance 20 ethernet
encapsulation dot1q 20
bridge-domain 20

interface GigabitEthernet0/0/1
no ip address
no shutdown
negotiation auto

router ospf 14
router-id 14.14.14.1

interface GigabitEthernet0/0/2
description "JOIN INTERFACE"
encapsulation dot1q 11
ip address 209.165.201.1 255.255.255.224
ip pim passive
ip igmp version 3
ip ospf 14 area 14

interface Overlay1
no ip address
no shutdown
otv control-group 239.1.1.1
otv data-group 232.1.1.0/28
otv join-interface GigabitEthernet0/0/2
service instance 11 ethernet
encapsulation dot1q 11
bridge-domain 11

CORE:

ip multicast-routing distributed

router ospf 14
router-id 14.14.14.2

interface Loopback14
ip address 14.14.14.14 255.255.255.255
ip ospf 14 area 14

ip pim rp-address 14.14.14.14

interface GigabitEthernet0/0/0
no ip address
no shutdown
negotiation auto

```

```

interface GigabitEthernet0/0/2
  description "CORE INTERFACE CONNECTED TO ED1"
  encapsulation dot1Q 14
  ip address 209.165.201.1 255.255.255.224
  ip pim sparse-mode
  ip igmp version 3
  ip ospf 14 area 14

interface GigabitEthernet0/0/0
  no ip address
  no shutdown
  negotiation auto

interface GigabitEthernet0/0/1
  description "CORE INTERFACE CONNECTED TO ED2"
  encapsulation dot1Q 11
  ip address 209.165.201.1 255.255.255.224
  ip pim sparse-mode
  ip igmp version 3
  ip ospf 14 area 14

ED2:

ip multicast-routing distributed

ip igmp snooping querier version 3
ip igmp snooping querier

otv site bridge-domain 12
otv site-identifier 0000.0000.0003

interface GigabitEthernet0/0/0
  description "ACCESS / INTERNAL INTERFACE"
  no shutdown
  negotiation auto
  service instance 11 ethernet
    encapsulation dot1q 11
    bridge-domain 11
  !
  service instance 12 ethernet
    encapsulation dot1q 12
    bridge-domain 12

interface GigabitEthernet0/0/3
  no ip address
  no shutdown
  negotiation auto

router ospf 14
  router-id 14.14.14.3

interface GigabitEthernet0/0/4
  description "JOIN INTERFACE"
  encapsulation dot1Q 11
  ip address 209.165.201.1 255.255.255.224
  ip pim passive
  ip igmp version 3
  ip ospf 14 area 14

interface Overlay11
  no ip address
  no shutdown
  otv control-group 239.1.1.1
  otv data-group 232.1.1.0/28
  otv join-interface GigabitEthernet0/0/4
  service instance 11 ethernet
    encapsulation dot1q 11
    bridge-domain 11

```

The following is sample output from the **show otv** command:

```
Edge-Device-1#show otv overlay1
Overlay Interface Overlay1
  VPN name           : overlay1_sitel
  VPN ID             : 1
  State              : UP
  Fwd-capable        : Yes
  Fwd-ready          : Yes
  AED-Server         : Yes
  Backup AED-Server  : No
  AED Capable        : Yes
  IPv4 control group : 239.1.1.1
  Mcast data group range(s): 232.1.1.0/28
  Join interface(s)  : GigabitEthernet0/0/2
  Join IPv4 address  : 209.165.201.1
  Tunnel interface(s): Tunnel0
  Encapsulation format : GRE/IPv4
  Site Bridge-Domain : 10
  Capability          : Multicast-reachable
  Is Adjacency Server : No
  Adj Server Configured : No
  Prim/Sec Adj Svr(s) : None
```

Edge-Device-1#

The following sample output from the **show otv adjacency** command shows the OTV overlay adjacency status:

```
Edge-Device-1#show otv overlay 1 adjacency
Overlay Adjacency Database for overlay 1
  Hostname           System-ID           Dest Addr           Site-ID           Up Time           State
Edge-Device-2      e4aa.5d0f.9b00 209.165.201.2      0000.0000.0002 01:15:13         UP
```

Edge-Device-1#

The following sample output from the **show otv vlan** command shows the OTV VLAN AED status:

```
Edge-Device-1#show otv overlay 1 vlan
Overlay 1 VLAN Configuration Information
  Inst VLAN BD   Auth ED           State           Site If(s)
  0 20 20 *Device           active          Gi0/0/0:SI20
Total VLAN(s): 1
```

Edge-Device-1#

The following sample output from the **show otv route** command shows the OTV unicast routing table:

```
Edge-Device-1#show otv overlay 1 route

Codes: BD - Bridge-Domain, AD - Admin-Distance,
       SI - Service Instance, * - Backup Route

OTV Unicast MAC Routing Table for Overlay1

  Inst VLAN BD   MAC Address      AD   Owner  Next Hops(s)
-----
  0 20 20 000b.45b7.82c0 40   BD Eng Gi0/0/0:SI20
  0 20 20 0013.5f1c.6ec0 50   ISIS  Edge-Device-2
```

2 unicast routes displayed in Overlay1

2 Total Unicast Routes Displayed

Edge-Device-1#

The following sample output from the **show otv mroute** command shows the OTV multicast routing table:

```
Device# show otv mroute
OTV Multicast Routing Table for Overlay1
```

```

Bridge-Domain = 2, s = *, g = *
  Outgoing interface list:
    Default, NoRedist
  Incoming interface count = 0, Outgoing interface count = 1

Bridge-Domain = 3, s = *, g = *
  Outgoing interface list:
    Default, NoRedist
  Incoming interface count = 0, Outgoing interface count = 1

Bridge-Domain = 4, s = *, g = *
  Outgoing interface list:
    Default, NoRedist
  Incoming interface count = 0, Outgoing interface count = 1

Bridge-Domain = 10, s = *, g = 224.0.1.40
  Outgoing interface list:
    Overlay1, ED3
  Incoming interface count = 0, Outgoing interface count = 1

Bridge-Domain = 11, s = *, g = *
  Outgoing interface list:
    Default, NoRedist
  Incoming interface count = 0, Outgoing interface count = 1
5 multicast routes displayed in Overlay1

```

5 Total Multicast Routes Displayed

The following sample output from the **show otv data-group** command shows the OTV data group multicast address mappings:

Device# **show otv data-group**

```

Flags:  D - Local active source dynamically detected
        S - Local active source statically configured
        J - Data group has been joined in the core
        U - Data group has not been joined in the core

```

Remote Active Sources for Overlay1

BD	Active-Source	Active-Group	Delivery-Source	Delivery-Group	Flags
1	10.0.1.1	232.0.0.1	209.165.201.10	232.5.0.0	U
2	10.0.2.1	232.0.0.1	209.165.201.10	232.5.0.1	U
3	10.0.3.1	232.0.0.1	209.165.201.10	232.5.0.2	U
4	10.0.4.1	232.0.0.1	209.165.201.10	232.5.0.3	U
5	10.0.5.1	232.0.0.1	209.165.201.10	232.5.0.4	J
6	10.0.6.1	232.0.0.1	209.165.201.10	232.5.0.5	J

Displayed 6 remote data-group mappings

Local Active Sources for Overlay1

BD	Active-Source	Active-Group	Delivery-Source	Delivery-Group	Flags
1	10.0.1.1	232.0.0.1	209.165.201.10	232.5.0.0	D
2	10.0.2.1	232.0.0.1	209.165.201.10	232.5.0.1	D
3	10.0.3.1	232.0.0.1	209.165.201.10	232.5.0.2	D
4	10.0.4.1	232.0.0.1	209.165.201.10	232.5.0.3	D
5	10.0.5.1	232.0.0.1	209.165.201.10	232.5.0.4	D
6	10.0.6.1	232.0.0.1	209.165.201.10	232.5.0.5	D
7	10.0.7.1	232.0.0.1	209.165.201.10	232.5.0.6	D
8	10.0.8.1	232.0.0.1	209.165.201.10	232.5.0.7	D
9	10.0.9.1	232.0.0.1	209.165.201.10	232.5.0.8	D

Displayed 9 local data-group mappings

The following is sample output for configuring OTV using multicast.

```

ED2#show otv
Overlay Interface Overlay1
  VPN name      : overlay1_site1
  VPN ID       : 1
  State        : UP
  AED Capable  : Yes
  IPv4 control group : 239.1.1.1
  Mcast data group range(s) : 232.1.1.0/28
  Join interface(s) : GigabitEthernet0/0/2

```



```

Join IPv4 address      : 209.165.201.1
Tunnel interface(s)   : Tunnel0
Encapsulation format   : GRE/IPv4
Site Bridge-Domain    : 10
Capability            : Multicast-reachable
Is Adjacency Server   : No
Adj Server Configured : No
Prim/Sec Adj Svr(s)   : None
    
```

ED2#

MAC updates related to both VM1 and VM2:

ED2#show otv isis rib mac

```

Tag Overlay1:
MAC local rib for Overlay1 (Total 1)
  L2 Topology ID      Mac Address
  14                  000C.295E.EA91 --> MAC address VM1
                    [50/1] via 209.165.201.1(Overlay1), LSP[3/2]
ED2#
    
```

The below MAC addresses is sent to the other ED's [these MAC addresses are sent from ED2 to ED1]:

ED2#show otv isis rib redistribution mac

```

Tag Overlay1:
MAC redistribution local rib for Overlay1 (Total 3)
  L2 Topology ID      Mac Address
  14                  000C.297E.8CD5
  State: Up/Best/Advertised Metric: 1
  14                  000C.2980.1494 --> MAC address VM2
  State: Up/Best/Advertised Metric: 1
  14                  0050.56BF.4129
  State: Up/Best/Advertised Metric: 1
ED2#
    
```

The below command is the one using which OTV does ARP suppression:

```

ED2#show otv arp-nd-cache
Overlay150 ARP/ND L3->L2 Address Mapping Cache
BD      MAC          Layer-3 Address  Age (HH:MM:SS)  Local/Remote
14      000c.295e.ea91 172.16.11.20   00:01:24        Remote
    
```

ED2#

Finally, the packet is routed out using the below table.

ED2#show otv route

Codes: BD - Bridge-Domain, AD - Admin-Distance,
SI - Service Instance, * - Backup Route

OTV Unicast MAC Routing Table for Overlay150

Inst	VLAN	BD	MAC Address	AD	Owner	Next Hops(s)
0	14	14	000c.295e.ea91	50	ISIS	ED1
0	14	14	000c.297e.8cd5	40	BD Eng	Gi0/0/1:SI14
0	14	14	000c.2980.1494	40	BD Eng	Gi0/0/1:SI14
0	14	14	0050.56bf.4129	40	BD Eng	Gi0/0/1:SI14

4 unicast routes displayed in Overlay1

4 Total Unicast Routes Displayed

ED2#

Verifying the OTV Configuration

Use the following commands to display the required OTV configuration information. You can use one or more commands, as required, in any order.

SUMMARY STEPS

1. **show otv [overlay overlay-interface]**
2. **show otv [overlay overlay-interface] arp-nd-cache**
3. **show otv data-group [local | remote] [detail]**
4. **show otv log {event | error}**
5. **show otv [overlay overlay-interface] adjacency**
6. **show otv [overlay overlay-interface] vlan [authoritative]**
7. **show otv [overlay overlay-interface] site**
8. **show otv route**
9. **show otv mroute**

DETAILED STEPS

Step 1 **show otv [overlay overlay-interface]**
Use this command to display the overlay status and parameters.

Example:

```
Device# show otv
```

Step 2 **show otv [overlay overlay-interface] arp-nd-cache**
Use this command to display the Layer 3 to Layer 2 address mapping cache that is used for ARP suppression.

Example:

```
Device# show otv arp-nd-cache
```

Step 3 **show otv data-group [local | remote] [detail]**
Use this command to display the advertised multicast groups.

Example:

```
Device# show otv data-group
```

Step 4 **show otv log {event | error}**
Use this command to display the OTV debug log of events or errors.

Example:

```
Device# show otv log event
```

Step 5 **show otv [overlay overlay-interface] adjacency**
Use this command to display information about neighbors in an overlay network.

Example:

```
Device# show otv adjacency
```

Step 6 **show otv [overlay *overlay-interface*] vlan [authoritative]**

Use this command to display information about the enabled OTV VLANs.

Example:

```
Device# show otv vlan
```

Step 7 **show otv [overlay *overlay-interface*] site**

Use this command to display OTV site information such as the site VLAN and neighbors within the site.

Example:

```
Device# show otv site
```

Step 8 **show otv route**

Use this command to display unicast OTV MAC routes from the MLRIB route database.

Example:

```
Device# show otv route
```

Step 9 **show otv mroute**

Use this command to display OTV multicast routes from the MLRIB route database.

Example:

```
Device# show otv mroute
```

Additional References

Related Documents

Related Topic	Document Title
Cisco IOS commands	Cisco IOS Master Command List, All Releases
Wide-area networking commands: complete command syntax, command mode, defaults, usage guidelines, and examples	Cisco IOS Wide-Area Networking Command Reference

Technical Assistance

Description	Link
The Cisco Support and Documentation website provides online resources to download documentation, software, and tools. Use these resources to install and configure the software and to troubleshoot and resolve technical issues with Cisco products and technologies. Access to most tools on the Cisco Support and Documentation website requires a Cisco.com user ID and password.	http://www.cisco.com/cisco/web/support/index.html

Feature Information for OTV

The following table provides release information about the feature or features described in this module. This table lists only the software release that introduced support for a given feature in a given software release train. Unless noted otherwise, subsequent releases of that software release train also support that feature.

Use Cisco Feature Navigator to find information about platform support and Cisco software image support. To access Cisco Feature Navigator, go to www.cisco.com/go/cfn. An account on Cisco.com is not required.

Table 2: Feature Information for OTV

Feature Name	Releases	Feature Information
OTV—Overlay Transport Virtualization	Cisco IOS XE Release 3.5S	

Feature Name	Releases	Feature Information
		<p>OTV provides Layer 2 connectivity between remote network sites by using MAC-address-based routing and IP-encapsulated forwarding across a transport network to provide support for applications that require Layer 2 adjacency.</p> <p>The following commands were introduced or modified:</p> <p>authentication key-chain (OTV), authentication mode (OTV), authentication send-only (OTV), clear otv arp-nd, clear otv isis, clear otv isis lspfull, clear otv isis neighbors, clear otv isis rib, debug l2fib, debug mlrib common, debug mlrib layer2, debug otv, debug otv isis, debug platform software l2fib, debug platform software otv, debug platform hardware qfp feature otv client, debug platform hardware qfp feature otv datapath, hostname dynamic (OTV), interface overlay, log-adjacency-changes (OTV), lsp-gen-interval (OTV), lsp-mtu (OTV), lsp-refresh-interval (OTV), max-lsp-lifetime (OTV), nsf (OTV), otv active-source, otv control-group, otv data-group, otv filter-fhrp, otv fragmentation, otv isis authentication, otv isis csnp-interval, otv isis hello-interval, otv isis hello-multiplier, otv isis hello padding, otv isis lsp-interval, otv isis metric, otv isis overlay, otv isis priority, otv isis retransmit-interval, otv isis retransmit-throttle-interval, otv isis site otv join-interface, otv mac flood, otv site bridge-domain, otv site-identifier, otv suppress arp-nd, otv vpn-name, pre-interval (OTV), show l2fib, show mlrib common log, show</p>

Feature Name	Releases	Feature Information
		mlrib layer2 log, show otv, show otv adjacency, show otv arp-nd-cache, show otv data-group, show otv isis database, show otv isis hostname, show otv isis lsp-log, show otv isis neighbors, show otv isis nsf, show otv isis protocol, show otv isis rib, show otv isis spf-log, show otv isis vlan-database, show otv log, show otv mroute, show otv route, show otv site, show otv statistics, show otv summary, show otv vlan, show platform hardware qfp feature otv client interface, show platform software l2fib fp, show platform software l2fib rp, show platform software otv fp, skeptical interval (OTV), spf-interval (OTV).



OTV Adjacency Server

The OTV Adjacency Server feature enables you to provide unicast-only transport between edge devices when IP multicast is not available in the core network over which Overlay Transport Virtualization (OTV) runs. The OTV control plane over a unicast-only transport works exactly the same way as OTV with multicast core, except that in a unicast-core network, each OTV edge device needs to create multiple copies of each control plane packet and unicast them to each remote edge device in the same logical overlay. Because of this head-end replication behavior, the OTV Adjacency Server feature is not recommended for deployment when IP multicast is available in the core network. At the same time, the operational simplification of the unicast-only model makes this deployment option appealing in scenarios where LAN extension connectivity is required only between a few (two or three) data centers.

To use the OTV Adjacency Server feature, you configure one OTV edge device as a primary adjacency server and you can optionally configure another edge device as a secondary adjacency server as a backup. The remaining edge devices in the overlay network are configured to register to these adjacency servers.

This module describes how to configure an OTV adjacency server and edge devices in a unicast-core network.

- [Finding Feature Information, page 43](#)
- [Restrictions for OTV Adjacency Server, page 44](#)
- [Information About OTV Adjacency Server, page 44](#)
- [How to Configure an OTV Adjacency Server, page 46](#)
- [Configuration Examples for OTV Adjacency Server, page 49](#)
- [Additional References for OTV Adjacency Server, page 50](#)
- [Feature Information for OTV Adjacency Server, page 50](#)

Finding Feature Information

Your software release may not support all the features documented in this module. For the latest caveats and feature information, see [Bug Search Tool](#) and the release notes for your platform and software release. To find information about the features documented in this module, and to see a list of the releases in which each feature is supported, see the feature information table.

Use Cisco Feature Navigator to find information about platform support and Cisco software image support. To access Cisco Feature Navigator, go to www.cisco.com/go/cfn. An account on Cisco.com is not required.

Restrictions for OTV Adjacency Server

- Overlay Transport Virtualization (OTV) does not support a hybrid overlay networks where some edge devices are multicast-capable and others are not.
- OTV adjacency is formed between sites having the same overlay interface number only.
- In a unicast-only core network where an adjacency server has been configured, OTV does not perform the following tasks:
 - Map the configured internal site multicast group to a multicast group in the core.
 - Generate Internet Group Management Protocol (IGMP) and Protocol Independent Multicast (PIM) join interfaces to connect to the core network.
 - Add the control group to the Layer 2 Forwarding Information Base (L2FIB) for forwarding default broadcast and link-local packets. Instead, in a unicast-core network, OTV adds active unicast replication list (URL) entries so that broadcast and link-local packets are unicast replicated to remote edge devices.

Information About OTV Adjacency Server

Overview of a Unicast-Core Network

Each Overlay Transport Virtualization (OTV) node provides multicast-send capability by replicating multicast packets at the head-end. In other words, each OTV node that sends a multicast packet on a nonmulticast-capable network, unicast replicates the packet. During unicast replication, a copy of a multicast packet, which is originated in the upper layers of the overlay network, is created and sent to each OTV neighbor that is interested in the multicast packet.

To be able to unicast replicate, each OTV node needs to know a list of neighbors to which to replicate multicast packets. Instead of configuring the list of neighbors on each OTV node, a more dynamic mechanism that supports unicast replication list (URL) is used. In this mechanism, no replication server is used for replicating the multicast packets. Therefore, there are no choke points or path delays because of the lack of multicast capability. The multicast data packets, even though they are sent as a unicast message, travel on the same path from the source OTV edge device to each interested party. The only difference from a multicast-core network is that in this case, multiple copies are sent from the OTV edge device source.

Adjacency Servers

Overview of an Adjacency Server

Overlay Transport Virtualization (OTV) provides support for nonmulticast-capable, unicast-only core networks through the OTV Adjacency Server feature. An edge device is configured as an adjacency server (primary or secondary). All other edge devices are configured with the IPv4 addresses of the primary and secondary

adjacency servers, after which the edge devices communicate their reachability and capability information to the primary and secondary adjacency servers.

You can configure more than one adjacency server per overlay network. An adjacency server can serve multiple overlay networks.

Functions of an Adjacency Server

An adjacency server is responsible for informing all the other existing edge devices if there is any addition or loss of an edge device. Based on the reachability information, an edge device can further communicate directly with another edge device by using the unicast data path.

An adjacency server distributes the unicast replication list (URL) of all edge device addresses to the members of the overlay network. Each edge device then uses this list to encapsulate multicast packets in a unicast IP header destined for the unicast IP address of each remote edge device.

Unicast-Only Edge Devices

When an Overlay Transport Virtualization (OTV) edge device is configured with primary and secondary adjacency server addresses, the edge device sends Intermediate System-to-Intermediate System (IS-IS) hello (IIH) messages to both the adjacency servers. When these adjacency servers are configured, the edge devices are immediately added to the unicast replication list (URL). An edge device does not process an alternate server's type, length, value (TLV) until it detects that the primary adjacency server has timed out. Primary and secondary adjacency servers are configured on each edge device.

When a site is added to a unicast-core OTV network, you need to configure only that OTV edge device with the adjacency server addresses. No other site in the overlay network or other overlay networks need additional configuration.

If you configure an edge device as unicast-only, the following restrictions apply:

- The **otv control-group** command should not be configured.
- The **otv data-group** command should not be configured.
- Because no multicast **otv data-group** command is configured, the **show otv data-group** command does not display any data group mappings.

Unicast Replication List

Overlay Transport Virtualization (OTV) maintains the unicast IP address of each remote edge device in the overlay network in a unicast replication list (URL). One URL is maintained per overlay network. OTV marks each address in the URL as active or inactive depending on the local and remote edge devices' unicast-only status. The addresses that are marked as active are added to the forwarding path so that multicast traffic can be unicast replicated to those addresses. Inactive addresses are not added to the forwarding path.

How Adjacency Servers and Edge Devices Work

An adjacency server includes a new Intermediate System-to-Intermediate System (IS-IS) hello (IIH) type, length, value (TLV) in its IIH messages. At first, an adjacency server has no information about other edge devices because its unicast replication list (URL) is empty. After other Overlay Transport Virtualization (OTV)

edge devices start sending IIH messages to the adjacency server, the adjacency server builds up its URL. The contents of the URL are the IP addresses of the edge devices that sent IIH messages. The contents of the URL are advertised in the new IIH TLV and sent to each member of the URL. IS-IS itself does not do the replication. The lower layers perform that task so that the overlay network appears as a multiaccess, multicast-capable logical LAN to the upper layers.

OTV edge devices that receive the new IIH TLV discover other OTV edge devices in that overlay network. The IPv4 addresses of other OTV edge devices are added to the local URL. Then, when subsequent IIH messages are sent by IS-IS, they are unicast replicated at the lower layers to each address in the URL. This allows all OTV edge devices in the network to find each other and bring up IS-IS adjacencies with each other. The rest of the IS-IS protocol runs on the overlay interface as if the overlay interface is a multiaccess, multicast-capable LAN.

Exclusivity Between Multicast- and Unicast-Core Networks

The configuration of multicast-core-specific commands and unicast-core-specific adjacency server commands is mutually exclusive. Therefore, if the **otv control-group** command or the **otv data-group** command is configured, the adjacency server commands are not allowed until the previous commands are un-configured. Similarly, after an adjacency server command is configured, the **otv control-group** and **otv data-group** commands return errors until the adjacency server commands are configured.



Note

An edge device can support a combination of unicast and multicast overlays, but an overlay network can be either unicast or multicast.

In multicast- and unicast-core networks, point-to-point or point-to-multipoint generic routing encapsulation (GRE) tunnels are established among the edge devices for forwarding both unicast and multicast traffic.

How to Configure an OTV Adjacency Server

Configuring an OTV Adjacency Server

Perform this task to configure an Overlay Transport Virtualization (OTV) edge device as an adjacency server in a network where the provider core does not support multicast capability.

SUMMARY STEPS

1. **enable**
2. **configure terminal**
3. **interface overlay *interface***
4. **otv adjacency-server unicast-only**
5. **end**

DETAILED STEPS

	Command or Action	Purpose
Step 1	enable Example: Device> enable	Enables privileged EXEC mode. • Enter your password if prompted.
Step 2	configure terminal Example: Device# configure terminal	Enters global configuration mode.
Step 3	interface overlay interface Example: Device(config)# interface overlay 1	Creates an OTV overlay interface and enters interface configuration mode. • The range is from 0 to 512.
Step 4	otv adjacency-server unicast-only Example: Device(config-if)# otv adjacency-server unicast-only	Configures an OTV edge device as an adjacency server.
Step 5	end Example: Device(config-if)# end	Exits interface configuration mode and returns to privileged EXEC mode.

The following is sample output from the **show otv** command in a unicast-core network when an OTV edge device is configured as a primary adjacency server:

```
Device# show otv overlay 3

Overlay Interface Overlay3
  VPN name           : otv_3
  VPN ID             : 1
  State              : UP
  AED Capable        : Yes
  Join interface(s)  : GigabitEthernet0/1/1
  Join IPv4 address  : 10.0.2.8
  Tunnel interface(s): Tunnel0
  Encapsulation format : GRE/IPv4
  Site Bridge-Domain : 2
  Capability          : Unicast-only
  Is Adjacency Server : Yes
  Adj Server Configured : No
  Prim/Sec Adj Svr(s) : None
```

The following is sample output from the **show otv** command in a unicast-core network when another OTV edge device is configured as a secondary adjacency server:

```
Device# show otv overlay 3

Overlay Interface Overlay3
  VPN name           : otv_3
  VPN ID             : 1
  State              : UP
  AED Capable        : Yes
```

```

Join interface(s)       : GigabitEthernet0/3/3
Join IPv4 address      : 172.16.1.8
Tunnel interface(s)    : Tunnel0
Encapsulation format   : GRE/IPv4
Site Bridge-Domain     : 2
Capability              : Unicast-only
Is Adjacency Server    : Yes
Adj Server Configured  : Yes
Prim/Sec Adj Svr(s)   : 10.0.2.8

```

Configuring an OTV Edge Device in a Unicast-Core Network

SUMMARY STEPS

1. **enable**
2. **configure terminal**
3. **interface overlay *interface***
4. **otv use-adjacency-server *primary-address* [*secondary-address*] unicast-only**
5. **end**

DETAILED STEPS

	Command or Action	Purpose
Step 1	enable Example: Device> enable	Enables privileged EXEC mode. • Enter your password if prompted.
Step 2	configure terminal Example: Device# configure terminal	Enters global configuration mode.
Step 3	interface overlay <i>interface</i> Example: Device(config)# interface overlay 2	Creates an OTV overlay interface and enters interface configuration mode. • The range is from 0 to 512.
Step 4	otv use-adjacency-server <i>primary-address</i> [<i>secondary-address</i>] unicast-only Example: Device(config-if)# otv use-adjacency-server 10.10.2.2 unicast-only	Configures an OTV edge device to register to an adjacency server.
Step 5	end Example: Device(config-if)# end	Exits interface configuration mode and returns to privileged EXEC mode.

The following is sample output from the **show otv adjacency-server replication-list** command:

```
Device# show otv adjacency-server replication-list
```

```
OTV Overlay Replication List
Overlay Destination Address Capability
1 10.15.87.91 Unicast-only
1 10.99.60.99 Multicast-capable
5 10.66.32.49 Unicast-only
```

The following is sample output from the **show otv** command when an OTV edge device is configured to use primary and secondary adjacency servers:

```
Device# show otv overlay 3
```

```
Overlay Interface Overlay3
VPN name : otv_3
VPN ID : 1
State : UP
AED Capable : Yes
Join interface(s) : GigabitEthernet0/1/1
Join IPv4 address : 192.168.1.5
Tunnel interface(s) : Tunnell
Encapsulation format : GRE/IPv4
Site Bridge-Domain : 2
Capability : Unicast-only
Is Adjacency Server : No
Adj Server Configured : Yes
Prim/Sec Adj Svr(s) : 10.0.2.8/172.16.1.8
```

Configuration Examples for OTV Adjacency Server

Example: Configuring an OTV Adjacency Server

The following example shows how to configure an edge device as an adjacency server:

```
Device> enable
Device# configure terminal
Device(config)# interface overlay 1
Device(config-if)# otv adjacency-server unicast-only
Device(config-if)# end
```

Example: Configuring an OTV Edge Device in a Unicast-Core Network

The following example shows how to configure an edge device to register to an adjacency server in a unicast-core network:

```
Device> enable
Device# configure terminal
Device(config)# interface overlay 1
Device(config-if)# otv use-adjacency-server 10.10.1.2 unicast-only
Device(config-if)# end
```

Additional References for OTV Adjacency Server

Related Documents

Related Topic	Document Title
Cisco IOS commands	Cisco IOS Master Command List, All Releases
Wide-area networking commands: complete command syntax, command mode, defaults, usage guidelines, and examples	Cisco IOS Wide-Area Networking Command Reference
Unicast-Only Transport Infrastructure	OTV Technology Introduction and Deployment Considerations
Configuring OTV Adjacency Servers	<i>Cisco Nexus 7000 Series NX-OS OTV Configuration Guide</i>

Technical Assistance

Description	Link
<p>The Cisco Support website provides extensive online resources, including documentation and tools for troubleshooting and resolving technical issues with Cisco products and technologies.</p> <p>To receive security and technical information about your products, you can subscribe to various services, such as the Product Alert Tool (accessed from Field Notices), the Cisco Technical Services Newsletter, and Really Simple Syndication (RSS) Feeds.</p> <p>Access to most tools on the Cisco Support website requires a Cisco.com user ID and password.</p>	http://www.cisco.com/support

Feature Information for OTV Adjacency Server

The following table provides release information about the feature or features described in this module. This table lists only the software release that introduced support for a given feature in a given software release train. Unless noted otherwise, subsequent releases of that software release train also support that feature.

Use Cisco Feature Navigator to find information about platform support and Cisco software image support. To access Cisco Feature Navigator, go to www.cisco.com/go/cfn. An account on Cisco.com is not required.

Table 3: Feature Information for OTV Adjacency Server

Feature Name	Releases	Feature Information
OTV Adjacency Server	Cisco IOS XE Release 3.9S	<p>The OTV Adjacency Server feature enables you to provide unicast-only transport between edge devices when IP multicast is not available in the core network over which Overlay Transport Virtualization (OTV) runs. To use the OTV Adjacency Server feature, you configure one OTV edge device as a primary adjacency server and you can optionally configure another edge device as a secondary adjacency server as a backup. The remaining edge devices in the overlay network are configured to register to these adjacency servers.</p> <p>In Cisco IOS XE Release 3.9S, support was added for the Cisco ASR 1000 Series Routers and Cisco CSR 1000V Series Routers.</p> <p>The following commands were introduced or modified: otv adjacency-server unicast-only, otv use-adjacency-server unicast-only, show otv adjacency-server replication-list.</p>

