



## SRTP-RTP Interworking

The Cisco Unified Border Element (CUBE) Support for SRTP-RTP Interworking feature allows secure network to non-secure network calls and provides operational enhancements for Session Initiation Protocol (SIP) trunks from Cisco Unified Call Manager and Cisco Unified Call Manager Express. Support for Secure Real-Time Transport Protocol (SRTP) to Real-Time Transport Protocol (RTP) interworking in a network is enabled for SIP-SIP audio calls.

- [Feature Information for SRTP-RTP Interworking, on page 1](#)
- [Prerequisites for SRTP-RTP Interworking, on page 2](#)
- [Restrictions for SRTP-RTP Interworking, on page 2](#)
- [Information About SRTP-RTP Interworking, on page 2](#)
- [How to Configure Support for SRTP-RTP Interworking, on page 6](#)
- [Configuration Examples for SRTP-RTP Interworking, on page 14](#)

## Feature Information for SRTP-RTP Interworking

The following table provides release information about the feature or features described in this module. This table lists only the software release that introduced support for a given feature in a given software release train. Unless noted otherwise, subsequent releases of that software release train also support that feature.

Use Cisco Feature Navigator to find information about platform support and Cisco software image support. To access Cisco Feature Navigator, go to <https://cfng.cisco.com/>. An account on Cisco.com is not required.

**Table 1: Feature Information for SRTP-RTP Interworking**

| Feature Name   | Releases                                   | Feature Information  |
|--|--|--|
| Cisco Unified Border Element Support for SRTP-RTP Interworking | 12.4(22)YB , 15.0(1)M<br>Cisco IOS XE 3.1S | This feature allows secure to non-secure enterprise calls. Support for SRTP-RTP interworking between one or multiple Cisco Unified Border Elements is enabled for SIP-SIP audio calls. |
| Supplementary Services Support on CUBE for SRTP-RTP Calls      | Cisco IOS 15.2(1)T<br>Cisco IOS XE 3.7S    | The SRTP-RTP Interworking feature was enhanced to support supplementary services for SRTP-RTP calls.   |

| Feature Name  | Releases                     | Feature Information  |
|---|------------------------------|--|
| Support for AEAD_AES_GCM_256 and AEAD_AES_GCM_128 crypto-suites | Cisco IOS XE Everest 16.5.1b | AEAD_AES_GCM_256 and AEAD_AES_GCM_128 crypto suites were added to support SRTP-RTP interworking. |

## Prerequisites for SRTP-RTP Interworking

- SRTP-RTP interworking is supported with Cisco Unified CallManager 7.0 and later releases.
- DSP resources are required for platforms running on Cisco IOS Releases. For more information on configuring DSP resources, see [Transcoding](#)
- Platforms running on Cisco IOS XE Releases do not require DSP resources.

## Restrictions for SRTP-RTP Interworking

- Asymmetric SRTP fallback configuration is not supported on the Cisco Integrated Services Router Generation 2 platform.
- Dial peer hunting to H323 or TDM is not supported.
- Video calls are not supported on platforms running on Cisco IOS Releases.
- More than one video m-line is not supported.
- DTMF interworking is not supported on ISR G2 (2900, 3900) series routers. It is supported only on platforms running on Cisco IOS XE Releases.
- GCM ciphers with extension header are not supported.

## Information About SRTP-RTP Interworking

To configure support for SRTP-RTP interworking, you should understand the following concepts:

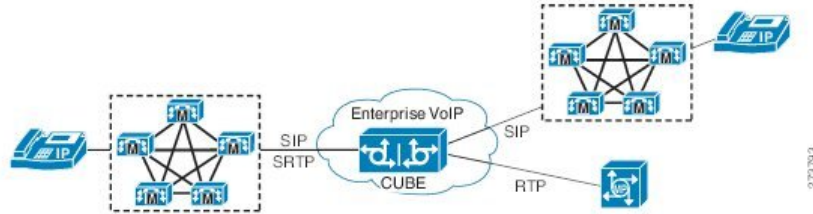
### Support for SRTP-RTP Interworking

The Cisco Unified Border Element Support for SRTP-RTP Interworking feature connects SRTP Cisco Unified Call Manager domains with the following:

- RTP Cisco Unified Call Manager domains. Domains that do not support SRTP or have not been configured for SRTP, as shown in the figure below.
- RTP Cisco applications or servers. For example, Cisco Unified MeetingPlace, Cisco WebEx, or Cisco Unity, which do not support SRTP, or have not been configured for SRTP, or are resident in a secure data center, as shown in the figure below.

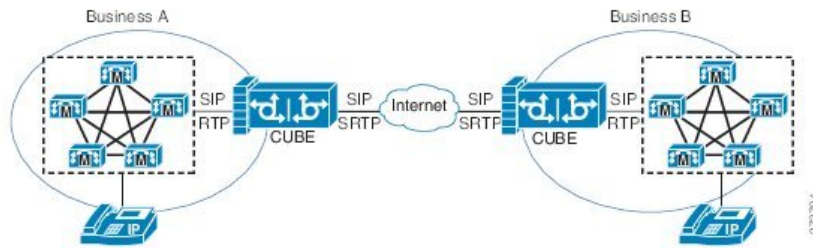
- RTP to third-party equipment. For example, IP trunks to PBXs or virtual machines, which do not support SRTP.

**Figure 1: SRTP Domain Connections**



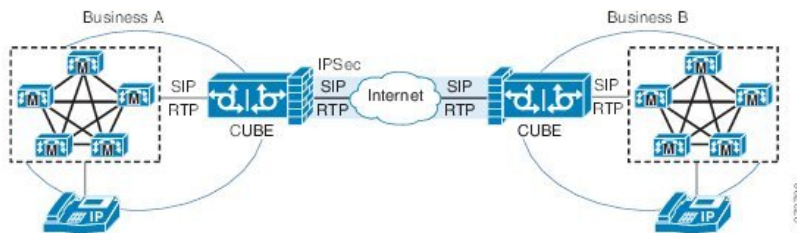
The Cisco Unified Border Element Support for SRTP-RTP Interworking feature connects SRTP enterprise domains to RTP SIP provider SIP trunks. SRTP-RTP interworking connects RTP enterprise networks with SRTP over an external network between businesses. This provides flexible secure business-to-business communications without the need for static IPsec tunnels or the need to deploy SRTP within the enterprise, as shown in the figure below.

**Figure 2: Secure Business-to-Business Communications**



SRTP-RTP interworking also connects SRTP enterprise networks with static IPsec over external networks, as shown in the figure below.

**Figure 3: SRTP Enterprise Network Connections**



SRTP-RTP interworking on the CUBE in a network topology uses single-pair key generation. Existing audio and dual-tone multifrequency (DTMF) transcoding is used to support voice calls. SRTP-RTP interworking support is provided in both flow-through and high-density mode. There is no impact on SRTP-SRTP pass-through calls.

SRTP is configured on one dial peer using the `srtp` and `srtp fallback` commands. RTP is configured on the other dial peer. The dial peer configuration takes precedence over the global configuration on the CUBE.

Fallback handling occurs if one of the call endpoints does not support SRTP. The call can fall back to RTP-RTP, or the call can fail, depending on the configuration. Fallback takes place only if the `srtp fallback` command is configured on the respective dial peer.

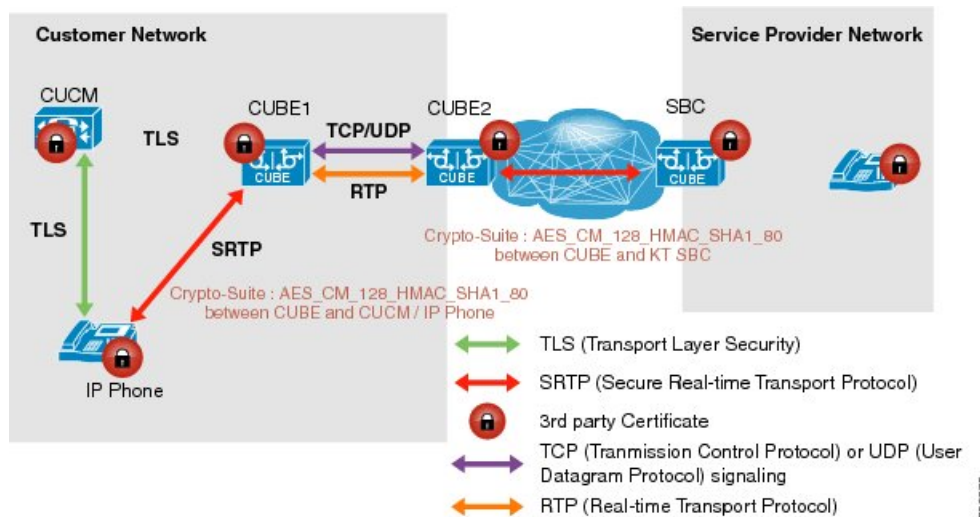
## Using SRTP-RTP Chain for Interworking Between AES\_CM\_128\_HMAC\_SHA1\_32 and AES\_CM\_128\_HMAC\_SHA1\_80 Crypto Suites

A single Cisco Unified Call Manager (CUCM) device cannot terminate a Secure Real-time Transport Protocol (SRTP) connection with an IP Phone using the AES\_CM\_128\_HMAC\_SHA1\_32 crypto suite and initiate an SRTP connection with an external CUBE device with the AES\_CM\_128\_HMAC\_SHA1\_80 crypto suite at the same time.

For Cisco Unified Call Manager (Unified Communications Manager) and IP Phone devices that support only AES\_CM\_128\_HMAC\_SHA1\_32 crypto suite, the interim SRTP-RTP interworking solution that is described below can be implemented.

- CUCM or IP Phone side:
  - An SRTP connection using the AES\_CM\_128\_HMAC\_SHA1\_32 crypto suite exists between the IP Phone and CUBE1.
  - An RTP connection exists between CUBE1 and CUBE2.
- SIP trunk side—An SRTP connection using the AES\_CM\_128\_HMAC\_SHA1\_80 crypto suite is initiated by CUBE2 here. In the image below, CUBE2 is the border element on the Customer Network and SBC is the border element on the Service Provider Network.

**Figure 4: SRTP-RTP Interworking Supporting AES\_CM\_128\_HMAC\_SHA1\_32 crypto suite**



### Note

- AES\_CM\_128\_HMAC\_SHA1\_32 to AES\_CM\_128\_HMAC\_SHA1\_80 interworking is not supported upto Cisco IOS 15.5(3)M Release and Cisco IOS XE Everest 16.4.1 Release.
- From Cisco IOS XE Everest 16.5.1b Release onwards, SRTP-SRTP interworking is supported and therefore SRTP-RTP chain is not required.

## Supplementary Services Support

The following supplementary services are supported:

- Midcall codec change with voice class codec configuration
- Reinvite-based call hold and resume.
- Music on hold (MoH) invoked from the Cisco Unified Communications Manager (Cisco UCM), where the call leg changes between SRTP and RTP for an MoH source.
- Reinvite-based call forward and call transfer.
- Call transfer based on a REFER message, with local consumption or pass-through of the REFER message on the CUBE
- Call forward based on a 302 message, with local consumption or pass-through of the 302 message on the CUBE.
- T.38 fax switchover
- Fax pass-through switchover

For call transfers involving REFER and 302 messages (messages that are locally consumed on CUBE), end-to-end media renegotiation is initiated from CUBE only when you configure the **supplementary-service media-renegotiate** command in voice service VoIP configuration mode.



---

**Note** Any call-flow wherein there is a switchover from RTP to SRTP on the same SIP call-leg requires the **supplementary-service media-renegotiate** command that is enabled in global or voice service VoIP configuration mode to ensure that there is 2-way audio.

Example call-flows:

- RTP-RTP flow switching to SRTP-RTP.
- Nonsecure MOH being played during secure call hold or resume.
- RTP-SRTP flow switching to SRTP- SRTP.

---

When supplementary services are invoked from the endpoints, the call can switch between SRTP and RTP during the call duration. Hence, Cisco recommends that you configure such SIP trunks for SRTP fallback. For information on configuring SRTP fallback, refer [Enabling SRTP Fallback](#).

# How to Configure Support for SRTP-RTP Interworking

## Configuring SRTP-RTP Interworking Support



---

**Note** From Cisco IOS XE Everest Release 16.5.1b onwards, the following crypto suites are enabled by default on the SRTP leg:

- AEAD\_AES\_256\_GCM
- AEAD\_AES\_128\_GCM
- AES\_CM\_128\_HMAC\_SHA1\_80
- AES\_CM\_128\_HMAC\_SHA1\_32

Use the following procedure for changing the default preference list.

---

Perform the task in this section to enable SRTP-RTP interworking support between one or multiple Cisco Unified Border Elements for SIP-SIP audio calls. In this task, RTP is configured on the incoming call leg and SRTP is configured on the outgoing call leg.



---

**Note** This feature is available only on Cisco IOS images with security package.

---

### SUMMARY STEPS

1. **enable**
2. **configure terminal**
3. **dial-peer voice tag voip**
4. **destination-pattern string**
5. **session protocol sipv2**
6. **session target ipv4: destination-address**
7. **incoming called-number string**
8. **codec codec**
9. **end**
10. **dial-peer voice tag voip**
11. Repeat Steps 4, 5, 6, and 7 to configure a second dial peer.
12. **srtp**
13. **codec codec**
14. **exit**

## DETAILED STEPS

## Procedure

|        | Command or Action  | Purpose  |
|--------|--|--|
| Step 1 | <b>enable</b><br><b>Example:</b><br>Device> <b>enable</b>  | Enables privileged EXEC mode. <ul style="list-style-type: none"> <li>• Enter your password if prompted.</li> </ul>   |
| Step 2 | <b>configure terminal</b><br><b>Example:</b><br>Device# <b>configure terminal</b>  | Enters global configuration mode.  |
| Step 3 | <b>dial-peer voice tag voip</b><br><b>Example:</b><br>Device(config)# <b>dial-peer voice 201 voip</b>                                    | Defines a particular dial peer, to specify the method of voice encapsulation, and enters dial peer voice configuration mode. <ul style="list-style-type: none"> <li>• In the example, the following parameters are set:               <ul style="list-style-type: none"> <li>• Dial peer 201 is defined.</li> <li>• VoIP is shown as the method of encapsulation.</li> </ul> </li> </ul> |
| Step 4 | <b>destination-pattern string</b><br><b>Example:</b><br>Device(config-dial-peer)# <b>destination-pattern 5550111</b>                     | Specifies either the prefix or the full E.164 telephone number to be used for a dial peer string. <ul style="list-style-type: none"> <li>• In the example, 5550111 is specified as the pattern for the telephone number.</li> </ul>  |
| Step 5 | <b>session protocol sipv2</b><br><b>Example:</b><br>Device(config-dial-peer)# <b>session protocol sipv2</b>                              | Specifies a session protocol for calls between local and remote routers using the packet network. <ul style="list-style-type: none"> <li>• In the example, the <b>sipv2</b> keyword is configured so that the dial peer uses the SIP protocol.</li> </ul>  |
| Step 6 | <b>session target ipv4: destination-address</b><br><b>Example:</b><br>Device(config-dial-peer)# <b>session target ipv4:10.13.25.102.</b> | Designates an IPv4 destination address where calls will be sent. <ul style="list-style-type: none"> <li>• In the example, calls matching this outbound dial-peer will be sent to 10.13.25.102.</li> </ul>  |
| Step 7 | <b>incoming called-number string</b><br><b>Example:</b><br>Device(config-dial-peer)# <b>incoming called-number 5550111</b>               | Specifies a digit string that can be matched by an incoming call to associate the call with a dial peer. <ul style="list-style-type: none"> <li>• In the example, 5550111 is specified as the pattern for the E.164 or private dialing plan telephone number.</li> </ul>   |

|                | Command or Action  | Purpose  |
|----------------|--|--|
| <b>Step 8</b>  | <b>codec</b> <i>codec</i><br><b>Example:</b><br>Device(config-dial-peer)# <b>codec g711ulaw</b>              | Specifies the voice coder rate of speech for the dial peer. <ul style="list-style-type: none"> <li>In the example, G.711 mu-law at 64,000 bps, is specified as the voice coder rate for speech.</li> </ul>   |
| <b>Step 9</b>  | <b>end</b><br><b>Example:</b><br>Device(config-dial-peer)# <b>end</b>  | Exits dial peer voice configuration mode.  |
| <b>Step 10</b> | <b>dial-peer voice</b> <i>tag voip</i><br><b>Example:</b><br>Device(config)# <b>dial-peer voice 200 voip</b> | Defines a particular dial peer, to specify the method of voice encapsulation, and enters dial peer voice configuration mode. <ul style="list-style-type: none"> <li>In the example, the following parameters are set:               <ul style="list-style-type: none"> <li>Dial peer 200 is defined.</li> <li>VoIP is shown as the method of encapsulation.</li> </ul> </li> </ul> |
| <b>Step 11</b> | Repeat Steps 4, 5, 6, and 7 to configure a second dial peer.   | --   |
| <b>Step 12</b> | <b>srtp</b><br><b>Example:</b><br>Device(config-dial-peer)# <b>srtp</b>                                      | Specifies that SRTP is used to enable secure calls for the dial peer.  |
| <b>Step 13</b> | <b>codec</b> <i>codec</i><br><b>Example:</b><br>Device(config-dial-peer)# <b>codec g711ulaw</b>              | Specifies the voice coder rate of speech for the dial peer. <ul style="list-style-type: none"> <li>In the example, G.711 mu-law at 64,000 bps, is specified as the voice coder rate for speech.</li> </ul>   |
| <b>Step 14</b> | <b>exit</b><br><b>Example:</b><br>Device(config-dial-peer)# <b>exit</b>                                      | Exits dial peer voice configuration mode.  |

## Configuring Crypto Authentication



**Note** Effective Cisco IOS XE Everest Releases 16.5.1b, **srtp-auth** command is deprecated. Although this command is still available in Cisco IOS XE Everest software, executing this command does not cause any configuration changes. Use **voice class srtp-crypto** command to configure the preferred cipher-suites for the SRTP call leg (connection). For more information, see SRTP-SRTP Interworking.



**SUMMARY STEPS**

1. **enable**
2. **configure terminal**
3. Execute the commands based on your configuration mode
  - In dial-peer configuration mode:
 

```
dial-peer voice tag voip
```

```
voice-class sip srtp-auth {sha1-32 | sha1-80 | system}
```
  - In global VoIP SIP configuration mode:
 

```
voice service voip
```

```
sip
```

```
srtp-auth {sha1-32 | sha1-80}
```
4. **end**

**DETAILED STEPS****Procedure**

|               | <b>Command or Action</b>   | <b>Purpose</b>   |
|---------------|--|--|
| <b>Step 1</b> | <b>enable</b><br><b>Example:</b><br>Device> enable   | Enables privileged EXEC mode. <ul style="list-style-type: none"> <li>• Enter your password if prompted.</li> </ul>   |
| <b>Step 2</b> | <b>configure terminal</b><br><b>Example:</b><br>Device# configure terminal   | Enters global configuration mode.  |
| <b>Step 3</b> | Execute the commands based on your configuration mode <ul style="list-style-type: none"> <li>• In dial-peer configuration mode:               <pre><b>dial-peer voice tag voip</b></pre> <pre><b>voice-class sip srtp-auth {sha1-32   sha1-80   system}</b></pre> </li> <li>• In global VoIP SIP configuration mode:               <pre><b>voice service voip</b></pre> <pre><b>sip</b></pre> <pre><b>srtp-auth {sha1-32   sha1-80}</b></pre> </li> </ul> <b>Example:</b><br>Device(config)# dial-peer voice 15 voip | Configures an SRTP connection on CUBE using the preferred crypto suite. <ul style="list-style-type: none"> <li>• The default value is <b>sha1-32</b>.</li> </ul> |

|               | Command or Action   | Purpose   |
|---------------|---|---|
|               | <pre>Device(config-dial-peer)# voice-class sip srtp-auth   sha1-80</pre> <p><b>Example:</b></p> <pre>Device(config)# voice service voip Device(conf-voi-serv)# sip Device(conf-serv-sip)# srtp-auth sha1-80</pre> |   |
| <b>Step 4</b> | <p><b>end</b></p> <p><b>Example:</b></p> <pre>Device(conf-serv-sip)# end</pre>  | Ends the current configuration session and returns to privileged EXEC mode. |

## Enabling SRTP Fallback

You can configure SRTP with the fallback option so that a call can fall back to RTP if SRTP is not supported by the other call end. Enabling SRTP fallback is required for supporting nonsecure supplementary services such as MoH, call forward, and call transfer.

### SUMMARY STEPS

- enable**
- configure terminal**
- Enter one of the following commands:
  - In dial-peer configuration mode
 

```
dial-peer
voice
tag
voip

srtp
fallback (for interworking with devices other than Cisco Unified Communications Manager)

or

voice-class sip srtp
negotiate cisco (Enable this CLI along with srtp fallback command to support SRTP fallback with Cisco Unified Communications Manager )
```
  - In global VoIP SIP configuration mode
 

```
voice service voip

sip

srtp
fallback(for interworking with devices other than Cisco Unified Communications Manager)

or
```

**srtp negotiate cisco** (Enable this CLI along with **srtp fallback** command to support SRTP fallback with Cisco Unified Communications Manager )

4. exit

**DETAILED STEPS**

**Procedure**

|               | <b>Command or Action</b>   | <b>Purpose</b>  |
|---------------|--|---|
| <b>Step 1</b> | <p><b>enable</b></p> <p><b>Example:</b></p> <p>Device&gt; <b>enable</b></p>  | <p>Enables privileged EXEC mode.</p> <ul style="list-style-type: none"> <li>• Enter your password if prompted.</li> </ul> |
| <b>Step 2</b> | <p><b>configure terminal</b></p> <p><b>Example:</b></p> <p>Device# <b>configure terminal</b></p>   | <p>Enters global configuration mode.</p>  |
| <b>Step 3</b> | <p>Enter one of the following commands:</p> <ul style="list-style-type: none"> <li>• In dial-peer configuration mode</li> </ul> <p><b>dial-peer</b><br/><b>voice</b><br/><i>tag</i><br/><b>voip</b></p> <p><b>srtp</b><br/><b>fallback</b> (for interworking with devices other than Cisco Unified Communications Manager)</p> <p>or</p> <p><b>voice-class sip srtp</b><br/><b>negotiate cisco</b> (Enable this CLI along with <b>srtp fallback</b> command to support SRTP fallback with Cisco Unified Communications Manager )</p> <li>• In global VoIP SIP configuration mode</li> <p><b>voice service voip</b></p> <p><b>sip</b></p> <p><b>srtp</b><br/><b>fallback</b>(for interworking with devices other than Cisco Unified Communications Manager)</p> <p>or</p> | <p>Enables call fallback to nonsecure mode.</p>   |

|               | Command or Action  | Purpose   |
|---------------|--|---|
|               | <p><b>srtp negotiate cisco</b> (Enable this CLI along with <b>srtp fallback</b> command to support SRTP fallback with Cisco Unified Communications Manager )</p> <p><b>Example:</b></p> <pre>Device(config)# dial-peer voice 10 voip Device(config-dial-peer)# srtp fallback</pre> <p><b>Example:</b></p> <pre>Device(config)# dial-peer voice 10 voip Device(config-dial-peer)# voice-class sip srtp negotiate Cisco</pre> <p><b>Example:</b></p> <pre>Device(config)# voice service voip Device(config)# sip Device(conf-voi-serv)# srtp fallback</pre> <p><b>Example:</b></p> <pre>Device(config)# voice service voip Device(config)# sip Device(conf-voi-serv)# srtp negotiate cisco</pre> |   |
| <b>Step 4</b> | <p><b>exit</b></p> <p><b>Example:</b></p> <pre>Device(conf-voi-serv)# exit</pre>   | Exits present configuration mode and enters privileged EXEC mode. |

## Troubleshooting Tips

The following commands help in troubleshooting SRTP-RTP supplementary services support:

- **debug ccsip all**
- **debug voip ccapi inout**

## Verifying SRTP-RTP Supplementary Services Support

Perform this task to verify the configuration for SRTP-RTP supplementary services support.

### SUMMARY STEPS

1. **enable**
2. **show call active voice brief**

## DETAILED STEPS

### Procedure

#### Step 1 enable

Enables privileged EXEC mode.

##### Example:

```
Device> enable
```

#### Step 2 show call active voice brief

Displays call information for voice calls in progress.

##### Example:

```
Device# show call active voice brief
Telephony call-legs: 0
SIP call-legs: 2
H323 call-legs: 0
Call agent controlled call-legs: 0
SCCP call-legs: 2
ulticast call-legs: 0
Total call-legs: 4
0    : 1 12:49:45.256 IST Fri Jun 3 2011.1 +29060 pid:1 Answer 10008001 connected
dur 00:01:19 tx:1653/271092 rx:2831/464284 dscp:0 media:0
IP 10.45.40.40:7892 SRTP: on rtt:0ms pl:0/0ms lost:0/0/0 delay:0/0/0ms g711ulaw TextRelay: off
media inactive detected:n media contrl rcvd:n/a timestamp:n/a
long duration call detected:n long duration call duration:n/a timestamp:n/a

0    : 2 12:49:45.256 IST Fri Jun 3 2011.2 +29060 pid:22 Originate 20009001 connected
dur 00:01:19 tx:2831/452960 rx:1653/264480 dscp:0 media:0
IP 10.45.40.40:7893 SRTP: off rtt:0ms pl:0/0ms lost:0/0/0 delay:0/0/0ms g711ulaw TextRelay: off
media inactive detected:n media contrl rcvd:n/a timestamp:n/a
long duration call detected:n long duration call duration:n/a timestamp:n/a

0    : 3 12:50:14.326 IST Fri Jun 3 2011.1 +0 pid:0 Originate connecting
dur 00:01:19 tx:2831/452960 rx:1653/264480 dscp:0 media:0
IP 10.45.34.252:2000 SRTP: off rtt:0ms pl:0/0ms lost:0/0/0 delay:0/0/0ms g711ulaw TextRelay: off
media inactive detected:n media contrl rcvd:n/a timestamp:n/a
long duration call detected:n long duration call duration:n/a timestamp:n/a

0    : 5 12:50:14.326 IST Fri Jun 3 2011.2 +0 pid:0 Originate connecting
dur 00:01:19 tx:1653/271092 rx:2831/464284 dscp:0 media:0
IP 10.45.34.252:2000 SRTP: on rtt:0ms pl:0/0ms lost:0/0/0 delay:0/0/0ms g711ulaw TextRelay: off
media inactive detected:n media contrl rcvd:n/a timestamp:n/a
long duration call detected:n long duration call duration:n/a timestamp:n/a
```

# Configuration Examples for SRTP-RTP Interworking

## Example: SRTP-RTP Interworking

The following example shows how to configure support for SRTP-RTP interworking. In this example, the incoming call leg is RTP and the outgoing call leg is SRTP.

```
%SYS-5-CONFIG_I: Configured from console by console
dial-peer voice 201 voip
 destination-pattern 5550111
 session protocol sipv2
 session target ipv4:10.13.25.102
 incoming called-number 5550112
 codec g711ulaw
!
dial-peer voice 200 voip
 destination-pattern 5550112
 session protocol sipv2
 session target ipv4:10.13.2.51
 incoming called-number 5550111
 srtp
 codec g711ulaw
```

## Example: Configuring Crypto Authentication




---

**Note** Effective Cisco IOS XE Everest Releases 16.5.1b, **srtp-auth** command is deprecated. Although this command is still available in Cisco IOS XE Everest software, executing this command does not cause any configuration changes. Use **voice class srtp-crypto** command to configure the preferred cipher-suites for the SRTP call leg (connection). For more information, see SRTP-SRTP Interworking.

---

## Example: Configuring Crypto Authentication (Dial Peer Level)

The following example shows how to configure Cisco UBE to support an SRTP connection using the AES\_CM\_128\_HMAC\_SHA1\_80 crypto suite at the dial peer level:

```
Device> enable
Device# configure terminal
Device(config)# dial-peer voice 15 voip
Device(config-dial-peer)# voice-class sip srtp-auth sha1-80
Device(config-dial-peer)# end
```

## Example: Configuring Crypto Authentication (Global Level)

The following example shows how to configure Cisco UBE to support an SRTP connection using the AES\_CM\_128\_HMAC\_SHA1\_80 crypto suite at the global level:

```
Device> enable
Device# configure terminal
Device(config)# voice service voip
Device(conf-voi-serv)# sip
Device(conf-serv-sip)# srtp-auth sha1-80
Device(conf-serv-sip)# end
```

