



Implementing NAT-PT for IPv6

Last Updated: August 1, 2012

Network Address Translation--Protocol Translation (NAT-PT) is an IPv6 to IPv4 translation mechanism, as defined in RFC 2765 and RFC 2766, allowing IPv6-only devices to communicate with IPv4-only devices and vice versa.

- [Finding Feature Information, page 1](#)
- [Prerequisites for Implementing NAT-PT for IPv6, page 1](#)
- [Restrictions for Implementing NAT-PT for IPv6, page 1](#)
- [Information About Implementing NAT-PT for IPv6, page 2](#)
- [How to Implement NAT-PT for IPv6, page 5](#)
- [Configuration Examples for NAT-PT for IPv6, page 19](#)
- [Additional References, page 20](#)
- [Feature Information for Implementing NAT-PT for IPv6, page 22](#)

Finding Feature Information

Your software release may not support all the features documented in this module. For the latest caveats and feature information, see [Bug Search Tool](#) and the release notes for your platform and software release. To find information about the features documented in this module, and to see a list of the releases in which each feature is supported, see the feature information table at the end of this module.

Use Cisco Feature Navigator to find information about platform support and Cisco software image support. To access Cisco Feature Navigator, go to www.cisco.com/go/cfn. An account on Cisco.com is not required.

Prerequisites for Implementing NAT-PT for IPv6

Before implementing NAT-PT, you must configure IPv4 and IPv6 on the router interfaces that need to communicate between IPv4-only and IPv6-only networks.

Restrictions for Implementing NAT-PT for IPv6



Americas Headquarters:
Cisco Systems, Inc., 170 West Tasman Drive, San Jose, CA 95134-1706 USA

- NAT-PT is not supported in Cisco Express Forwarding.
- NAT-PT provides limited Application Layer Gateway (ALG) support--ALG support for Internet Control Message Protocol (ICMP), File Transfer Protocol (FTP), and Domain Naming System (DNS).
- NAT-PT has the same restrictions that apply to IPv4 NAT where NAT-PT does not provide end-to-end security and the NAT-PT router can be a single point of failure in the network.
- Users must decide whether to use Static NAT-PT operation, Dynamic NAT-PT operation, Port Address Translation (PAT), or IPv4-mapped operation. Deciding which operation to use determines how a user will configure and operate NAT-PT.
- Bridge-Group Virtual interfaces (BVI) in IPv6 are not supported with NAT-PT and wireless interfaces Dot11Radio.

Information About Implementing NAT-PT for IPv6

Users can configure NAT-PT using one of the following operations--static NAT-PT, dynamic NAT-PT, Port Address Translation (PAT), or IPv4-mapped operation--which are described in the following sections:

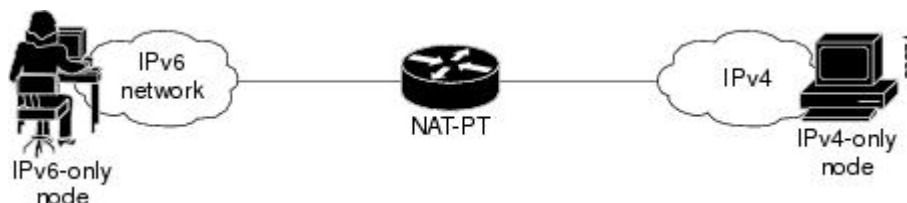
- [NAT-PT Overview, page 2](#)
- [Static NAT-PT Operation, page 3](#)
- [Dynamic NAT-PT Operation, page 3](#)
- [Port Address Translation or Overload, page 4](#)
- [IPv4-Mapped Operation, page 5](#)

NAT-PT Overview

NAT-PT for Cisco software was designed using RFC 2766 and RFC 2765 as a migration tool to help customers transition their IPv4 networks to IPv6 networks. Using a protocol translator between IPv6 and IPv4 allows direct communication between hosts speaking a different network protocol. Users can use either static definitions or IPv4-mapped definitions for NAT-PT operation.

The figure below shows that NAT-PT runs on a router between an IPv6 network and an IPv4 network to connect an IPv6-only node with an IPv4-only node.

Figure 1 NAT-PT Basic Operation



Although IPv6 solves addressing issues for customers, a long transition period is likely before customers move to an exclusive IPv6 network environment. During the transition period, any new IPv6-only networks will need to continue to communicate with existing IPv4 networks. NAT-PT is designed to be deployed to allow direct communication between IPv6-only networks and IPv4-only networks. For a service provider customer, an example could be an IPv6-only client trying to access an IPv4-only web server. Enterprise customers will also migrate to IPv6 in stages, and many of their IPv4-only networks will be operational for several years. Dual-stack networks may have some IPv6-only hosts configured to take advantage of the IPv6 autoconfiguration, global addressing, and simpler management, and these hosts can use NAT-PT to communicate with existing IPv4-only networks in the same organization.

One of the benefits of NAT-PT is that no changes are required to existing hosts, because all the NAT-PT configurations are performed at the NAT-PT router. Customers with existing stable IPv4 networks can introduce an IPv6 network and use NAT-PT to allow communication without disrupting the existing network. To further illustrate the seamless transition, File Transfer Protocol (FTP) can be used between IPv4 and IPv6 networks, just as within an IPv4 network. Packet fragmentation is enabled by default when IPv6 is configured, allowing IPv6 and IPv4 networks to resolve fragmentation problems between the networks. Without the ability to resolve fragmentation, connectivity could become intermittent when fragmented packets might be dropped or improperly interpreted.

Cisco has developed other transition techniques including dual stack, IPv6 over MPLS, and tunneling. NAT-PT should not be used when other native communication techniques exist. If a host is configured as a dual-stack host with both IPv4 and IPv6, we do not recommend using NAT-PT to communicate between the dual-stack host and an IPv6-only or IPv4-only host. NAT-PT is not recommended for a scenario in which an IPv6-only network is trying to communicate to another IPv6-only network via an IPv4 backbone or vice versa, because NAT-PT would require a double translation to be performed. In this scenario, tunneling techniques are recommended.

The following sections describe the operations that may be used to configure NAT-PT. Users have the option to use one of the following operations for NAT-PT operation, but not all four.

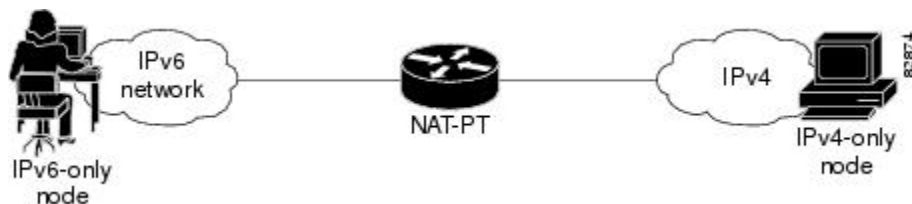
Static NAT-PT Operation

Static NAT-PT uses static translation rules to map one IPv6 address to one IPv4 address. IPv6 network nodes communicate with IPv4 network nodes using an IPv6 mapping of the IPv4 address configured on the NAT-PT router.

The figure below shows how the IPv6-only node named A can communicate with the IPv4-only node named C using NAT-PT. The NAT-PT device is configured to map the source IPv6 address for node A of 2001:DB8:bbbb:1::1 to the IPv4 address 192.168.99.2. NAT-PT is also configured to map the source address of IPv4 node C, 192.168.30.1 to 2001:DB8::a. When packets with a source IPv6 address of node A are received at the NAT-PT router, they are translated to have a destination address to match node C in the IPv4-only network. NAT-PT can also be configured to match a source IPv4 address and translate the packet to an IPv6 destination address to allow an IPv4-only host communicate with an IPv6-only host.

If you have multiple IPv6-only or IPv4-only hosts that need to communicate, you may need to configure many static NAT-PT mappings. Static NAT-PT is useful when applications or servers require access to a stable IPv4 address, such as accessing an external IPv4 DNS server.

Figure 2 **Static NAT-PT Operation**



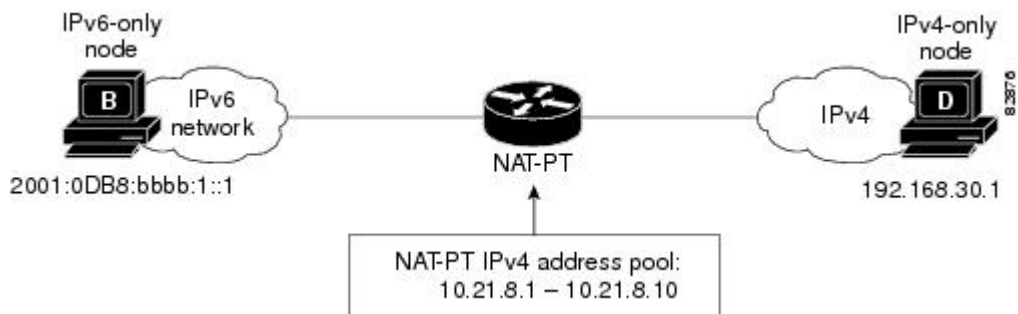
Dynamic NAT-PT Operation

Dynamic NAT-PT allows multiple NAT-PT mappings by allocating addresses from a pool. NAT-PT is configured with a pool of IPv6 and/or IPv4 addresses. At the start of a NAT-PT session a temporary address is dynamically allocated from the pool. The number of addresses available in the address pool

determines the maximum number of concurrent sessions. The NAT-PT device records each mapping between addresses in a dynamic state table.

The figure below shows how dynamic NAT-PT operates. The IPv6-only node B can communicate with the IPv4-only node D using dynamic NAT-PT. The NAT-PT device is configured with an IPv6 access list, prefix list, or route map to determine which packets are to be translated by NAT-PT. A pool of IPv4 addresses--10.21.8.1 to 10.21.8.10 in the figure -- is also configured. When an IPv6 packet to be translated is identified, NAT-PT uses the configured mapping rules and assigns a temporary IPv4 address from the configured pool of IPv4 addresses.

Figure 3 Dynamic NAT-PT Operation



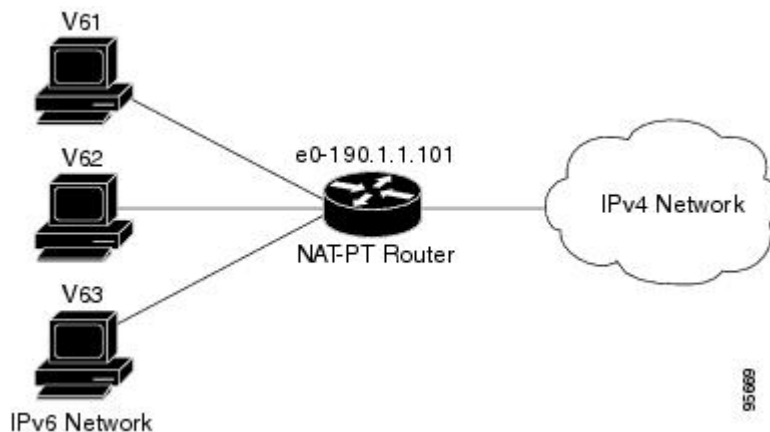
Dynamic NAT-PT translation operation requires at least one static mapping for the IPv4 DNS server.

After the IPv6 to IPv4 connection is established, the reply packets going from IPv4 to IPv6 take advantage of the previously established dynamic mapping to translate back from IPv4 to IPv6. If the connection is initiated by an IPv4-only host, then the explanation is reversed.

Port Address Translation or Overload

Port Address Translation (PAT), also known as Overload, allows a single IPv4 address to be used among multiple sessions by multiplexing on the port number to associate several IPv6 users with a single IPv4 address. PAT can be accomplished through a specific interface or through a pool of addresses. The figure below shows multiple IPv6 addresses from the IPv6 network linked to a single IPv4 interface into the IPv4 network.

Figure 4 Port Address Translation



IPv4-Mapped Operation

Customers can also send traffic from their IPv6 network to an IPv4 network without configuring IPv6 destination address mapping. A packet arriving at an interface is checked to discover if it has a NAT-PT prefix that was configured with the **ipv6 nat prefix v4-mapped** command. If the prefix matches, then an access-list check is performed to discover if the source address matches the access list or prefix list. If the prefix does not match, the packet is dropped.

If the prefix matches, source address translation is performed. If a rule has been configured for the source address translation, the last 32 bits of the destination IPv6 address is used as the IPv4 destination and a flow entry is created.

With an IPv4-mapping configuration on the router, when the DNS ALG IPv4 address is converted to an IPv6 address, the IPv6 address is processed and the DNS packets from IPv4 network get their ALGs translated into the IPv6 network.

How to Implement NAT-PT for IPv6

- [Configuring Basic IPv6 to IPv4 Connectivity for NAT-PT for IPv6, page 5](#)
- [Configuring IPv4-Mapped NAT-PT, page 7](#)
- [Configuring Mappings for IPv6 Hosts Accessing IPv4 Hosts, page 8](#)
- [Configuring Mappings for IPv4 Hosts Accessing IPv6 Hosts, page 12](#)
- [Configuring PAT for IPv6 to IPv4 Address Mappings, page 13](#)
- [Verifying NAT-PT Configuration and Operation, page 16](#)

Configuring Basic IPv6 to IPv4 Connectivity for NAT-PT for IPv6

Perform this task to configure basic IPv6 to IPv4 connectivity for NAT-PT, which consists of configuring the NAT-PT prefix globally, and enable NAT-PT on an interface. For NAT-PT to be operational, NAT-PT must be enabled on both the incoming and outgoing interfaces.

An IPv6 prefix with a prefix length of 96 must be specified for NAT-PT to use. The IPv6 prefix can be a unique local unicast prefix, a subnet of your allocated IPv6 prefix, or even an extra prefix obtained from your Internet service provider (ISP). The NAT-PT prefix is used to match a destination address of an IPv6 packet. If the match is successful, NAT-PT will use the configured address mapping rules to translate the IPv6 packet to an IPv4 packet. The NAT-PT prefix can be configured globally or with different IPv6 prefixes on individual interfaces. Using a different NAT-PT prefix on several interfaces allows the NAT-PT router to support an IPv6 network with multiple exit points to IPv4 networks.

SUMMARY STEPS

1. **enable**
2. **configure terminal**
3. **ipv6 nat prefix *ipv6-prefix / prefix-length***
4. **interface *type number***
5. **ipv6 address *ipv6-address {/prefix-length | link-local}***
6. **ipv6 nat**
7. **exit**
8. **interface *type number***
9. **ip address *ip-address mask [secondary]***
10. **ipv6 nat**

DETAILED STEPS

	Command or Action	Purpose
Step 1	enable Example: Router> enable	Enables privileged EXEC mode. <ul style="list-style-type: none"> • Enter your password if prompted.
Step 2	configure terminal Example: Router# configure terminal	Enters global configuration mode.
Step 3	ipv6 nat prefix <i>ipv6-prefix / prefix-length</i> Example: Router# ipv6 nat prefix 2001:DB8::/96	Assigns an IPv6 prefix as a global NAT-PT prefix. <ul style="list-style-type: none"> • Matching destination prefixes in IPv6 packets are translated by NAT-PT. • The only prefix length supported is 96.
Step 4	interface <i>type number</i> Example: Router(config)# interface gigabitethernet 3/1/1	Specifies an interface type and number, and places the router in interface configuration mode.
Step 5	ipv6 address <i>ipv6-address {/prefix-length link-local}</i> Example: Router(config-if)# ipv6 address 2001:DB8:yyyy:1::9/64	Specifies an IPv6 address assigned to the interface and enables IPv6 processing on the interface.

	Command or Action	Purpose
Step 6	ipv6 nat Example: Router(config-if)# ipv6 nat	Enables NAT-PT on the interface.
Step 7	exit Example: Router(config-if)# exit	Exits interface configuration mode, and returns the router to global configuration mode.
Step 8	interface type number Example: Router(config)# interface gigabitethernet 3/3/1	Specifies an interface type and number, and places the router in interface configuration mode.
Step 9	ip address ip-address mask [secondary] Example: Router(config-if)# ip address 192.168.30.9 255.255.255.0	Specifies an IP address and mask assigned to the interface and enables IP processing on the interface.
Step 10	ipv6 nat Example: Router(config-if)# ipv6 nat	Enables NAT-PT on the interface.

Configuring IPv4-Mapped NAT-PT

Perform this task to enable customers to send traffic from their IPv6 network to an IPv4 network without configuring IPv6 destination address mapping. This task shows the **ipv6 nat prefix v4-mapped** command configured on a specified interface, but the command could alternatively be configured globally:

SUMMARY STEPS

1. **enable**
2. **configure terminal**
3. **interface type number**
4. **ipv6 nat prefix ipv6-prefix v4-mapped {access-list-name | ipv6-prefix}**

DETAILED STEPS

Command or Action	Purpose
<p>Step 1 <code>enable</code></p> <p>Example:</p> <pre>Router> enable</pre>	<p>Enables privileged EXEC mode.</p> <ul style="list-style-type: none"> Enter your password if prompted.
<p>Step 2 <code>configure terminal</code></p> <p>Example:</p> <pre>Router# configure terminal</pre>	<p>Enters global configuration mode.</p>
<p>Step 3 <code>interface type number</code></p> <p>Example:</p> <pre>Router(config)# interface gigabitethernet 3/1/1</pre>	<p>Specifies an interface type and number, and places the router in interface configuration mode.</p>
<p>Step 4 <code>ipv6 nat prefix ipv6-prefix v4-mapped {access-list-name ipv6-prefix}</code></p> <p>Example:</p> <pre>Router(config-if)# ipv6 nat prefix 2001::/96 v4-mapped v4mapacl</pre>	<p>Enables customers to send traffic from their IPv6 network to an IPv4 network without configuring IPv6 destination address mapping.</p>

Configuring Mappings for IPv6 Hosts Accessing IPv4 Hosts

Perform this task to configure static or dynamic IPv6 to IPv4 address mappings. The dynamic address mappings include assigning a pool of IPv4 addresses and using an access list, prefix list, or route map to define which packets are to be translated.

SUMMARY STEPS

1. enable
2. configure terminal
3. Do one of the following:
 - `ipv6 nat v6v4 source ipv6-address ipv4-address`
 - `ipv6 nat v6v4 source {list access-list-name | route-map map-name} pool name`
4. `ipv6 nat v6v4 pool name start-ipv4 end-ipv4 prefix-length prefix-length`
5. `ipv6 nat translation [max-entries number] {timeout | udp-timeout | dns-timeout| tcp-timeout| finrst-timeout| icmp-timeout} {seconds| never}`
6. `ipv6 access-list access-list-name`
7. `permit protocol {source-ipv6-prefix / prefix-length| any| host source-ipv6-address}[operator [port-number]] [destination-ipv6-prefix / prefix-length| any| host destination-ipv6-address]`
8. exit
9. `show ipv6 nat translations [icmp| tcp| udp] [verbose]`
10. `show ipv6 nat statistics`

DETAILED STEPS

	Command or Action	Purpose
Step 1	<p><code>enable</code></p> <p>Example:</p> <pre>Router> enable</pre>	<p>Enables privileged EXEC mode.</p> <ul style="list-style-type: none"> • Enter your password if prompted.
Step 2	<p><code>configure terminal</code></p> <p>Example:</p> <pre>Router# configure terminal</pre>	<p>Enters global configuration mode.</p>

Command or Action	Purpose
<p>Step 3 Do one of the following:</p> <ul style="list-style-type: none"> • ipv6 nat v6v4 source <i>ipv6-address ipv4-address</i> • ipv6 nat v6v4 source {<i>list access-list-name</i> <i>route-map map-name</i>} pool name <p>Example:</p> <pre>Router(config)# ipv6 nat v6v4 source 2001:DB8:yyyy:1::1 10.21.8.10</pre> <p>Example:</p> <pre>Router(config)# ipv6 nat v6v4 source list pt-list1 pool v4pool</pre>	<p>Enables a static IPv6 to IPv4 address mapping using NAT-PT.</p> <p>or</p> <p>Enables a dynamic IPv6 to IPv4 address mapping using NAT-PT.</p> <ul style="list-style-type: none"> • Use the list or route-map keyword to specify a prefix list, access list, or a route map to define which packets are translated. • Use the pool keyword to specify the name of a pool of addresses, created by the ipv6 nat v6v4 pool command, to be used in dynamic NAT-PT address mapping.
<p>Step 4 ipv6 nat v6v4 pool name start-ipv4 end-ipv4 prefix-length prefix-length</p> <p>Example:</p> <pre>Router(config)# ipv6 nat v6v4 pool v4pool 10.21.8.1 10.21.8.10 prefix- length 24</pre>	<p>Specifies a pool of IPv4 addresses to be used by NAT-PT for dynamic address mapping.</p>
<p>Step 5 ipv6 nat translation [max-entries number] {timeout udp-timeout dns-timeout tcp-timeout finrst-timeout icmp-timeout} {seconds never}</p> <p>Example:</p> <pre>Router(config)# ipv6 nat translation udp- timeout 600</pre>	<p>(Optional) Specifies the time after which NAT-PT translations time out.</p>
<p>Step 6 ipv6 access-list access-list-name</p> <p>Example:</p> <pre>Router(config)# ipv6 access-list pt-list1</pre>	<p>(Optional) Defines an IPv6 access list and enters IPv6 access list configuration mode. The router prompt changes to Router(config-ipv6-acl)#.</p> <ul style="list-style-type: none"> • The <i>access-list name</i> argument specifies the name of the IPv6 access control list (ACL). IPv6 ACL names cannot contain a space or quotation mark, or begin with a numeral.

Command or Action	Purpose
<p>Step 7 <code>permit protocol {source-ipv6-prefix / prefix-length} [any] host source-ipv6-address [operator [port-number]] {destination-ipv6-prefix / prefix-length} [any] host destination-ipv6-address</code></p> <p>Example:</p> <pre>Router(config-ipv6-acl)# permit ipv6 2001:DB8:bbbb:1::/64 any</pre>	<p>(Optional) Specifies permit conditions for an IPv6 ACL.</p> <ul style="list-style-type: none"> The <i>protocol</i> argument specifies the name or number of an Internet protocol. It can be one of the keywords ahp, esp, icmp, ipv6, pcp, sctp, tcp, or udp, or an integer in the range from 0 to 255 representing an IPv6 protocol number. The <i>source-ipv6-prefix / prefix-length</i> and <i>destination-ipv6-prefix / prefix-length</i> arguments specify the source and destination IPv6 network or class of networks about which to set permit conditions. These arguments must be in the form documented in RFC 2373 where the address is specified in hexadecimal using 16-bit values between colons. The any keyword is an abbreviation for the IPv6 prefix <code>::/0</code>. The host source-ipv6-address keyword and argument combination specifies the source IPv6 host address about which to set permit conditions. The <i>source-ipv6-address</i> argument must be in the form documented in RFC 2373 where the address is specified in hexadecimal using 16-bit values between colons. Only the arguments and keywords relevant to this task are specified here. Refer to the permit command in the <i>IPv6 for Cisco IOS Command Reference</i> document for information on supported arguments and keywords.
<p>Step 8 <code>exit</code></p> <p>Example:</p> <pre>Router(config-if)# exit</pre>	<p>Exits access list configuration mode, and returns the router to global configuration mode. Enter the exit command twice to return to privileged EXEC mode.</p>
<p>Step 9 <code>show ipv6 nat translations [icmp tcp udp] [verbose]</code></p> <p>Example:</p> <pre>Router# show ipv6 nat translations verbose</pre>	<p>(Optional) Displays active NAT-PT translations.</p> <ul style="list-style-type: none"> Use the optional icmp, tcp, and udp keywords to display detailed information about the NAT-PT translation events for the specified protocol. Use the optional verbose keyword to display more detailed information about the active translations.
<p>Step 10 <code>show ipv6 nat statistics</code></p> <p>Example:</p> <pre>Router# show ipv6 nat statistics</pre>	<p>(Optional) Displays NAT-PT statistics.</p>

Configuring Mappings for IPv4 Hosts Accessing IPv6 Hosts

Perform this optional task to configure static or dynamic IPv4 to IPv6 address mappings. The dynamic address mappings include assigning a pool of IPv6 addresses and using an access list, prefix list, or route map to define which packets are to be translated.

SUMMARY STEPS

1. **enable**
2. **configure terminal**
3. Do one of the following:
 - `ipv6 nat v4v6 source ipv6-address ipv4-address`
 -
 - `ipv6 nat v4v6 source list {access-list-number | name} pool name`
4. `ipv6 nat v4v6 pool name start-ipv6 end-ipv6 prefix-length prefix-length`
5. `access-list {access-list-name| number} {deny| permit} [source source-wildcard] [log]`

DETAILED STEPS

Command or Action	Purpose
Step 1 enable Example: <pre>Router> enable</pre>	Enables privileged EXEC mode. <ul style="list-style-type: none"> • Enter your password if prompted.
Step 2 configure terminal Example: <pre>Router# configure terminal</pre>	Enters global configuration mode.

Command or Action	Purpose
<p>Step 3 Do one of the following:</p> <ul style="list-style-type: none"> • ipv6 nat v4v6 source <i>ipv6-address ipv4-address</i> • ipv6 nat v4v6 source list {<i>access-list-number</i> <i>name</i>} pool <i>name</i> <p>Example:</p> <pre>Router(config)# ipv6 nat v4v6 source 10.21.8.11 2001:DB8:yyyy::2</pre> <p>Example:</p> <pre>Router(config)# ipv6 nat v4v6 source list 1 pool v6pool</pre> <p>Example:</p> <pre>Router(config)# ipv6 nat v4v6 source list 1 pool v6pool</pre>	<p>Enables a static IPv4 to IPv6 address mapping using NAT-PT.</p> <p>or</p> <p>Enables a dynamic IPv4 to IPv6 address mapping using NAT-PT.</p> <ul style="list-style-type: none"> • Use the list keyword to specify an access list to define which packets are translated. • Use the pool keyword to specify the name of a pool of addresses, created by the ipv6 nat v4v6 pool command, to be used in dynamic NAT-PT address mapping.
<p>Step 4 ipv6 nat v4v6 pool <i>name start-ipv6 end-ipv6 prefix-length prefix-length</i></p> <p>Example:</p> <pre>Router(config)# ipv6 nat v4v6 pool v6pool 2001:DB8:yyyy::1 2001:DB8:yyyy::2 prefix-length 128</pre>	<p>Specifies a pool of IPv6 addresses to be used by NAT-PT for dynamic address mapping.</p>
<p>Step 5 access-list {<i>access-list-name</i> <i>number</i>} {deny permit} [<i>source source-wildcard</i>] [log]</p> <p>Example:</p> <pre>Router(config)# access-list 1 permit 192.168.30.0 0.0.0.255</pre>	<p>Specifies an entry in a standard IPv4 access list.</p>

Configuring PAT for IPv6 to IPv4 Address Mappings

Perform this task to configure PAT for IPv6 to IPv4 address mappings. Multiple IPv6 addresses are mapped to a single IPv4 address or to a pool of IPv4 addresses and using an access list, prefix list, or route map to define which packets are to be translated.

SUMMARY STEPS

1. **enable**
2. **configure terminal**
3. Do one of the following:
 - **ipv6 nat v6v4 source** {list *access-list-name* | route-map *map-name*} **pool** *name* *overload*
 -
 - **ipv6 nat v6v4 source** {list *access-list-name* | route-map *map-name*} **interface** *interface name* **overload**
4. **ipv6 nat v6v4 pool** *name* *start-ipv4* *end-ipv4* **prefix-length** *prefix-length*
5. **ipv6 nat translation** [**max-entries** *number*] {**timeout** | **udp-timeout** | **dns-timeout**| **tcp-timeout**| **finrst-timeout**| **icmp-timeout**} {*seconds*| **never**}
6. **ipv6 access-list** *access-list-name*
7. **permit** *protocol* {*source-ipv6-prefix / prefix-length*| **any**| **host** *source-ipv6-address*}[*operator* [*port-number*]] {*destination-ipv6-prefix / prefix-length*| **any**| **host** *destination-ipv6-address*}

DETAILED STEPS

	Command or Action	Purpose
Step 1	enable Example: Router> enable	Enables privileged EXEC mode. <ul style="list-style-type: none"> • Enter your password if prompted.
Step 2	configure terminal Example: Router# configure terminal	Enters global configuration mode.

Command or Action	Purpose
<p>Step 3 Do one of the following:</p> <ul style="list-style-type: none"> • ipv6 nat v6v4 source {<i>list access-list-name</i> <i>route-map map-name</i>} pool <i>name</i> <i>overload</i> • ipv6 nat v6v4 source {<i>list access-list-name</i> <i>route-map map-name</i>} interface <i>interface name</i> <i>overload</i> <p>Example:</p> <pre>Router(config)# ipv6 nat v6v4 source 2001:DB8:yyy:1::1 10.21.8.10</pre> <p>Example:</p> <pre>Router(config)# ipv6 nat v6v4 source list pt-list1 pool v4pool overload</pre>	<p>Enables a dynamic IPv6 to IPv4 address overload mapping using a pool address.</p> <p>or</p> <p>Enables a dynamic IPv6 to IPv4 address overload mapping using an interface address.</p> <ul style="list-style-type: none"> • Use the list or route-map keyword to specify a prefix list, access list, or a route map to define which packets are translated. • Use the pool keyword to specify the name of a pool of addresses, created by the ipv6 nat v6v4 pool command, to be used in dynamic NAT-PT address mapping. • Use the interface keyword to specify the interface address to be used for overload.
<p>Step 4 ipv6 nat v6v4 pool <i>name</i> <i>start-ipv4 end-ipv4 prefix-length prefix-length</i></p> <p>Example:</p> <pre>Router(config)# ipv6 nat v6v4 pool v4pool 10.21.8.1 10.21.8.10 prefix-length 24</pre>	<p>Specifies a pool of IPv4 addresses to be used by NAT-PT for dynamic address mapping.</p>
<p>Step 5 ipv6 nat translation [<i>max-entries number</i>] {<i>timeout</i> <i>udp-timeout</i> <i>dns-timeout</i> <i>tcp-timeout</i> <i>finrst-timeout</i> <i>icmp-timeout</i>} {<i>seconds</i> <i>never</i>}</p> <p>Example:</p> <pre>Router(config)# ipv6 nat translation udp- timeout 600</pre>	<p>(Optional) Specifies the time after which NAT-PT translations time out.</p>

Command or Action	Purpose
<p>Step 6 <code>ipv6 access-list <i>access-list-name</i></code></p> <p>Example:</p> <pre>Router(config)# ipv6 access-list pt-list1</pre>	<p>(Optional) Defines an IPv6 access list and enters IPv6 access list configuration mode. The router prompt changes to Router(config-ipv6-acl)#.</p> <ul style="list-style-type: none"> The <i>access-list name</i> argument specifies the name of the IPv6 access control list (ACL). IPv6 ACL names cannot contain a space or quotation mark, or begin with a numeral.
<p>Step 7 <code>permit <i>protocol</i> [<i>source-ipv6-prefix</i> / <i>prefix-length</i>] any host <i>source-ipv6-address</i>] [<i>operator</i> [<i>port-number</i>]] [<i>destination-ipv6-prefix</i> / <i>prefix-length</i>] any host <i>destination-ipv6-address</i>}</code></p> <p>Example:</p> <pre>Router(config-ipv6-acl)# permit ipv6 2001:DB8:bbbb:1::/64 any</pre>	<p>(Optional) Specifies permit conditions for an IPv6 ACL.</p> <ul style="list-style-type: none"> The <i>protocol</i> argument specifies the name or number of an Internet protocol. It can be one of the keywords ahp, esp, icmp, ipv6, pcp, sctp, tcp, or udp, or an integer in the range from 0 to 255 representing an IPv6 protocol number. The <i>source-ipv6-prefix / prefix-length</i> and <i>destination-ipv6-prefix / prefix-length</i> arguments specify the source and destination IPv6 network or class of networks about which to set permit conditions. These arguments must be in the form documented in RFC 2373 where the address is specified in hexadecimal using 16-bit values between colons. The any keyword is an abbreviation for the IPv6 prefix ::/0. The host <i>source-ipv6-address</i> keyword and argument combination specifies the source IPv6 host address about which to set permit conditions. The <i>source-ipv6-address</i> argument must be in the form documented in RFC 2373 where the address is specified in hexadecimal using 16-bit values between colons.

Verifying NAT-PT Configuration and Operation

SUMMARY STEPS

1. `clear ipv6 nat translation *`
2. `enable`
3. `debug ipv6 nat [detailed] port]`

DETAILED STEPS

Command or Action	Purpose
<p>Step 1 <code>clear ipv6 nat translation *</code></p> <p>Example:</p> <pre>Router> clear ipv6 nat translation *</pre>	<p>(Optional) Clears dynamic NAT-PT translations from the dynamic translation state table.</p> <ul style="list-style-type: none"> Use the * keyword to clear all dynamic NAT-PT translations. <p>Note Static translation configuration is not affected by this command.</p>

Command or Action	Purpose
Step 2 <code>enable</code> Example: Router> <code>enable</code>	Enables higher privilege levels, such as privileged EXEC mode. <ul style="list-style-type: none"> Enter your password if prompted.
Step 3 <code>debug ipv6 nat [detailed port]</code> Example: Router# <code>debug ipv6 nat detail</code>	Displays debugging messages for NAT-PT translation events.

- [Examples, page 17](#)

Examples

Sample Output from the `show ipv6 nat translations` Command

In the following example, output information about active NAT-PT translations is displayed using the `show ipv6 nat translations` command:

```
Router# show ipv6 nat translations
Prot  IPv4 source      IPv6 source
      IPv4 destination  IPv6 destination
---
      192.168.123.2      2001:DB8::2
---
      192.168.122.10      2001:DB8::10
tcp   192.168.124.8,11047    2001:DB8:3::8,11047
      192.168.123.2,23    2001:DB8::2,23
udp   192.168.124.8,52922    2001:DB8:3::8,52922
      192.168.123.2,69     2001::2,69
udp   192.168.124.8,52922    2001:DB8:3::8,52922
      192.168.123.2,52922  2001:DB8::2,52922
---
      192.168.124.8      2001:DB8:3::8
      192.168.123.2      2001:DB8::2
---
      192.168.124.8      2001:DB8:3::8
---
      192.168.121.4      2001:DB8:5::4
---
```

In the following example, detailed output information about active NAT-PT translations is displayed using the `show ipv6 nat translations` command with the `verbose` keyword:

```
Router# show ipv6 nat translations verbose
Prot  IPv4 source      IPv6 source
      IPv4 destination  IPv6 destination
---
      192.168.123.2      2001:DB8::2
      create 00:04:24, use 00:03:24,
---
      192.168.122.10      2001:DB8::10
      create 00:04:24, use 00:04:24,
tcp   192.168.124.8,11047    2001:DB8:3::8,11047
      192.168.123.2,23    2001:DB8::2,23
      create 00:03:24, use 00:03:20, left 00:16:39,
```

```

udp 192.168.124.8,52922      2001:DB8:3::8,52922
    192.168.123.2,69        2001:DB8::2,69
    create 00:02:51, use 00:02:37, left 00:17:22,
udp 192.168.124.8,52922      2001:DB8:3::8,52922
    192.168.123.2,52922     2001:DB8::2,52922
    create 00:02:48, use 00:02:30, left 00:17:29,
--- 192.168.124.8           2001:DB8:3::8
    192.168.123.2           2001:DB8::2
    create 00:03:24, use 00:02:34, left 00:17:25,
--- 192.168.124.8           2001:DB8:3::8
    ---
    create 00:04:24, use 00:03:24,
--- 192.168.121.4           2001:DB8:5::4
    ---
    create 00:04:25, use 00:04:25,

```

Sample Output from the show ipv6 nat statistics Command

In the following example, output information about NAT-PT statistics is displayed using the **show ipv6 nat statistics** command:

```

Router# show ipv6 nat statistics
Total active translations: 4 (4 static, 0 dynamic; 0 extended)
NAT-PT interfaces:
  Ethernet3/1, Ethernet3/3
Hits: 0 Misses: 0
Expired translations: 0

```

Sample Output from the clear ipv6 nat translation Command

In the following example, all dynamic NAT-PT translations are cleared from the dynamic translation state table using the **clear ipv6 nat translation** command with the * keyword. When the output information about active NAT-PT translations is then displayed using the **show ipv6 nat translations** command, only the static translation configurations remain. Compare this **show** command output with the output from the **show ipv6 nat translations** command in Step 1.

```

Router# clear ipv6 nat translation *
Router# show ipv6 nat translations
Prot  IPv4 source          IPv6 source
     IPv4 destination    IPv6 destination
---  ---
     192.168.123.2      2001:DB8::2
     ---
     192.168.122.10    2001:DB8::10
---  192.168.124.8      2001:DB8:3::8
     ---
     192.168.121.4    2001:DB8:5::4
     ---

```

Sample Output from the debug ipv6 nat Command

In the following example, debugging messages for NAT-PT translation events are displayed using the **debug ipv6 nat** command:

```

Router# debug ipv6 nat
00:06:06: IPv6 NAT: icmp src (2001:DB8:3002::8) -> (192.168.124.8), dst
(2001:DB8:2001::2) -> (192.168.123.2)
00:06:06: IPv6 NAT: icmp src (192.168.123.2) -> (2001:DB8:2001::2), dst (192.168.124.8) -
-> (2001:DB8:3002::8)
00:06:06: IPv6 NAT: icmp src (2001:DB8:3002::8) -> (192.168.124.8), dst
(2001:DB8:2001::2) -> (192.168.123.2)
00:06:06: IPv6 NAT: icmp src (192.168.123.2) -> (2001:DB8:2001::2), dst (192.168.124.8) -
-> (2001:DB8:3002::8)
00:06:06: IPv6 NAT: tcp src (2001:DB8:3002::8) -> (192.168.124.8), dst (2001:DB8:2001::2)
-> (192.168.123.2)
00:06:06: IPv6 NAT: tcp src (192.168.123.2) -> (2001:DB8:2001::2), dst (192.168.124.8) ->

```

```
(2001:DB8:3002::8)
00:06:06: IPv6 NAT: tcp src (2001:DB8:3002::8) -> (192.168.124.8), dst (2001:DB8:2001::2)
-> (192.168.123.2)
00:06:06: IPv6 NAT: tcp src (2001:DB8:3002::8) -> (192.168.124.8), dst (2001:DB8:2001::2)
-> (192.168.123.2)
00:06:06: IPv6 NAT: tcp src (2001:DB8:3002::8) -> (192.168.124.8), dst (2001:DB8:2001::2)
-> (192.168.123.2)
00:06:06: IPv6 NAT: tcp src (192.168.123.2) -> (2001:DB8:2001::2), dst (192.168.124.8) ->
(2001:DB8:3002::8)
```

Configuration Examples for NAT-PT for IPv6

- [Example: Static NAT-PT Configuration, page 19](#)
- [Example: Enabling Traffic to be Sent from an IPv6 Network to an IPv4 Network, page 19](#)
- [Example: Dynamic NAT-PT Configuration for IPv6 Hosts Accessing IPv4 Hosts, page 19](#)
- [Example: Dynamic NAT-PT Configuration for IPv4 Hosts Accessing IPv6 Hosts, page 20](#)

Example: Static NAT-PT Configuration

The following example configures the NAT-PT prefix globally, enables NAT-PT on two interfaces, and configures two static NAT-PT mappings. Ethernet interface 3/1 is configured as IPv6 only, and Ethernet interface 3/3 is configured as IPv4 only.

```
interface Ethernet3/1
  ipv6 address 2001:DB8:3002::9/64
  ipv6 enable
  ipv6 nat
!
interface Ethernet3/3
  ip address 192.168.30.9 255.255.255.0
  ipv6 nat
!
ipv6 nat v4v6 source 192.168.30.1 2001:DB8:0::2
ipv6 nat v6v4 source 2001:DB8:bbbb:1::1 10.21.8.10
ipv6 nat prefix 2001:DB8:0::/96
```

Example: Enabling Traffic to be Sent from an IPv6 Network to an IPv4 Network

In the following example, the access list permits any IPv6 source address with the prefix 2001::/96 to go to the destination with a 2000::/96 prefix. The destination is then translated to the last 32 bit of its IPv6 address; for example: source address = 2001::1, destination address = 2000::192.168.1.1. The destination then becomes 192.168.1.1 in the IPv4 network:

```
ipv6 nat prefix 2000::/96 v4-mapped v4map_acl
ipv6 access-list v4map_acl
  permit ipv6 2001::/96 2000::/96
```

Example: Dynamic NAT-PT Configuration for IPv6 Hosts Accessing IPv4 Hosts

The following example configures the NAT-PT prefix globally, enables NAT-PT on two interfaces, and configures one static NAT-PT mapping (used, for example, to access a DNS server). A dynamic NAT-PT mapping is also configured to map IPv6 addresses to IPv4 addresses using a pool of IPv4 addresses named

v4pool. The packets to be translated by NAT-PT are filtered using an IPv6 access list named pt-list1. The User Datagram Protocol (UDP) translation entries are configured to time out after 10 minutes. Ethernet interface 3/1 is configured as IPv6 only, and Ethernet interface 3/3 is configured as IPv4 only.

```
interface Ethernet3/1
  ipv6 address 2001:DB8:bbbb:1::9/64
  ipv6 enable
  ipv6 nat
!
interface Ethernet3/3
  ip address 192.168.30.9 255.255.255.0
  ipv6 nat
!
ipv6 nat v4v6 source 192.168.30.1 2001:DB8:0::2
ipv6 nat v6v4 source list pt-list1 pool v4pool
ipv6 nat v6v4 pool v4pool 10.21.8.1 10.21.8.10 prefix-length 24
ipv6 nat translation udp-timeout 600
ipv6 nat prefix 2001:DB8:1::/96
!
ipv6 access-list pt-list1
  permit ipv6 2001:DB8:bbbb:1::/64 any
```

Example: Dynamic NAT-PT Configuration for IPv4 Hosts Accessing IPv6 Hosts

The following example configures the NAT-PT prefix globally, enables NAT-PT on two interfaces, and configures one static NAT-PT mapping (used, for example, to access a DNS server). A dynamic NAT-PT mapping is also configured to map IPv4 addresses to IPv6 addresses using a pool of IPv6 addresses named v6pool. The packets to be translated by NAT-PT are filtered using an access list named pt-list2. Ethernet interface 3/1 is configured as IPv6 only, and Ethernet interface 3/3 is configured as IPv4 only.

```
interface Ethernet3/1
  ipv6 address 2001:DB8:bbbb:1::9/64
  ipv6 enable
  ipv6 nat
!
interface Ethernet3/3
  ip address 192.168.30.9 255.255.255.0
  ipv6 nat
!
ipv6 nat v4v6 source list 72 pool v6pool
ipv6 nat v4v6 pool v6pool 2001:DB8:0::1 2001:DB8:0::2 prefix-length 128
ipv6 nat v6v4 source 2001:DB8:bbbb:1::1 10.21.8.0
ipv6 nat prefix 2001:DB8:0::/96
!
access-list 72 permit 192.168.30.0 0.0.0.255
```

Additional References

Related Documents

Related Topic	Document Title
IPv6 supported feature list	"Start Here: Cisco IOS Software Release Specifics for IPv6 Features," <i>Cisco IOS IPv6 Configuration Guide</i>

Related Topic	Document Title
IPv6 commands: complete command syntax, command mode, defaults, usage guidelines, and examples	<i>Cisco IOS IPv6 Command Reference</i>
IPv6 addressing and IPv6 addressing services	Implementing IPv6 Addressing and Basic Connectivity
IPv4 addressing services commands	<i>Cisco IOS IP Addressing Services Command Reference</i>

Standards

Standards	Title
No new or modified standards are supported by this feature, and support for existing standards has not been modified by this feature.	--

MIBs

MIBs	MIBs Link
None	To locate and download MIBs for selected platforms, Cisco software releases, and feature sets, use Cisco MIB Locator found at the following URL: http://www.cisco.com/go/mibs

RFCs

RFCs	Title
RFC 2765	<i>Stateless IP/ICMP Translation Algorithm (SIIT)</i>
RFC 2766	<i>Network Address Translation - Protocol Translation (NAT-PT)</i>

Technical Assistance

Description	Link
The Cisco Support and Documentation website provides online resources to download documentation, software, and tools. Use these resources to install and configure the software and to troubleshoot and resolve technical issues with Cisco products and technologies. Access to most tools on the Cisco Support and Documentation website requires a Cisco.com user ID and password.	http://www.cisco.com/cisco/web/support/index.html

Feature Information for Implementing NAT-PT for IPv6

The following table provides release information about the feature or features described in this module. This table lists only the software release that introduced support for a given feature in a given software release train. Unless noted otherwise, subsequent releases of that software release train also support that feature.

Use Cisco Feature Navigator to find information about platform support and Cisco software image support. To access Cisco Feature Navigator, go to www.cisco.com/go/cfn. An account on Cisco.com is not required.

Table 1 *Feature Information for Implementing NAT-PT for IPv6*

Feature Name	Releases	Feature Information
NAT Protocol Translation	12.2(13)T 12.3 12.3(2)T 12.4	NAT-PT is an IPv6-IPv4 translation mechanism that allows IPv6-only devices to communicate with IPv4-only devices and vice versa. NAT-PT is not supported in Cisco Express Forwarding.
NAT-PT--Support for DNS ALG	12.2(13)T 12.3 12.3(2)T 12.4	IPv6 provides DNS ALG support.
NAT-PT--Support for FTP ALG	12.3(2)T 12.4 12.4(2)T	IPv6 provides FTP ALG support.
NAT-PT--Support for Fragmentation	12.3(2)T 12.4 12.4(2)T	Packet fragmentation is enabled by default when IPv6 is configured, allowing IPv6 and IPv4 networks to resolve fragmentation problems between the networks.

Feature Name	Releases	Feature Information
NAT-PT--Support for Overload (PAT)	12.3(2)T 12.4 12.4(2)T	PAT, also known as Overload, allows a single IPv4 address to be used among multiple sessions by multiplexing on the port number to associate several IPv6 users with a single IPv4 address.

Cisco and the Cisco logo are trademarks or registered trademarks of Cisco and/or its affiliates in the U.S. and other countries. To view a list of Cisco trademarks, go to this URL: www.cisco.com/go/trademarks. Third-party trademarks mentioned are the property of their respective owners. The use of the word partner does not imply a partnership relationship between Cisco and any other company. (1110R)

Any Internet Protocol (IP) addresses and phone numbers used in this document are not intended to be actual addresses and phone numbers. Any examples, command display output, network topology diagrams, and other figures included in the document are shown for illustrative purposes only. Any use of actual IP addresses or phone numbers in illustrative content is unintentional and coincidental.

© 2012 Cisco Systems, Inc. All rights reserved.