



## LISP Shared Model Virtualization

---

This guide describes how to configure Locator ID Separation Protocol (LISP) shared model virtualization using Software on all LISP-related devices, including the Egress Tunnel Router, Ingress Tunnel Router (ITR), Proxy ETR (PETR), Proxy ITR (PITR), Map Resolver (MR), and Map Server (MS).

LISP implements a new routing architecture that utilizes a "level of indirection" to separate an IP address into two namespaces: Endpoint Identifiers (EIDs), which are assigned to end-hosts, and Routing Locators (RLOCs), which are assigned to devices (primarily routers) that make up the global routing system. Splitting EID and RLOC functions yields several advantages including: improved routing system scalability, multihoming with ingress traffic engineering; efficient IPv6 Transition support; high-scale virtualization/multitenancy support; data center/VM-mobility support, including session persistence across mobility events; and seamless mobile node support.

- [Finding Feature Information, page 1](#)
- [Information About LISP Shared Model Virtualization, page 2](#)
- [How to Configure LISP Shared Model Virtualization, page 7](#)
- [Configuration Examples for LISP Shared Model Virtualization, page 38](#)
- [Additional References, page 39](#)
- [Feature Information for LISP Shared Model Virtualization, page 40](#)

## Finding Feature Information

Your software release may not support all the features documented in this module. For the latest caveats and feature information, see [Bug Search Tool](#) and the release notes for your platform and software release. To find information about the features documented in this module, and to see a list of the releases in which each feature is supported, see the feature information table.

Use Cisco Feature Navigator to find information about platform support and Cisco software image support. To access Cisco Feature Navigator, go to [www.cisco.com/go/cfn](http://www.cisco.com/go/cfn). An account on Cisco.com is not required.

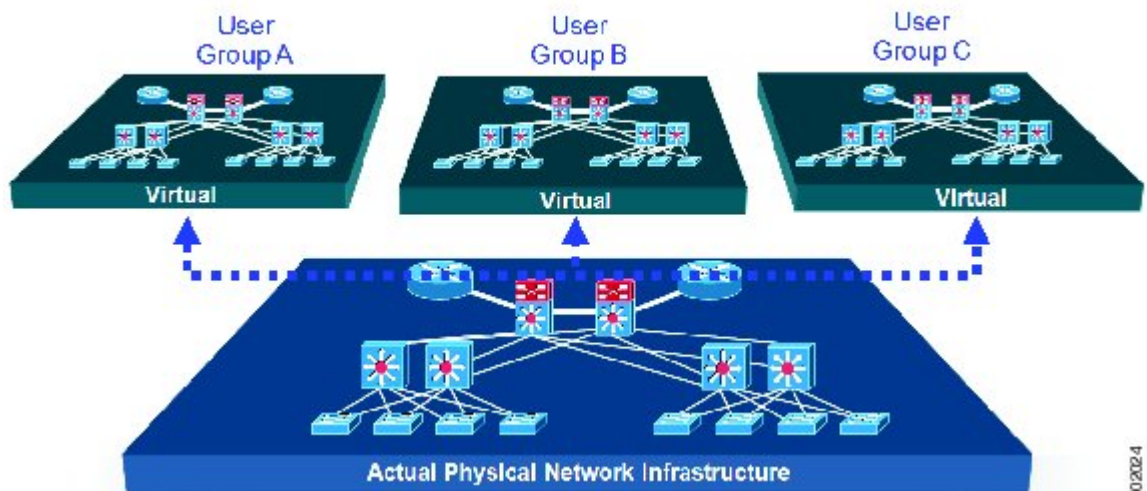
# Information About LISP Shared Model Virtualization

## Overview of LISP Virtualization

Deploying physical network infrastructure requires both capital investments for hardware, as well as manpower investments for installation and operational management support. When distinct user groups within an organization desire to control their own networks, it rarely makes economic sense for these user groups to deploy and manage separate physical networks. Physical plants are rarely utilized to their fullest, resulting in stranded capacity (bandwidth, processor, memory, etc.). In addition, the power, rack space, and cooling needs to physical plants do not satisfy modern “green” requirements. Network virtualization offers the opportunity to satisfy organizational needs, while efficiently utilizing physical assets.

The purpose of network virtualization, as shown in the figure below, is to create multiple, logically separated topologies across one common physical infrastructure.

**Figure 1: LISP Deployment Environment**



When considering the deployment of a virtualized network environment, take into account both the device and the path level.

### Device Level Virtualization

Virtualization at the device level entails the use of the virtual routing and forwarding (VRF) to create multiple instances of Layer 3 routing tables, as illustrated in the figure below. VRFs provide segmentation across IP addresses, allowing for overlapped address space and traffic separation. Separate routing, QoS, security, and management policies can be applied to each VRF instance. An IGP or EGP routing process is typically enabled

within a VFR, just as it would be in the global (default) routing table. As described in detail below, LISP binds VRFs to instance IDs for similar purposes.

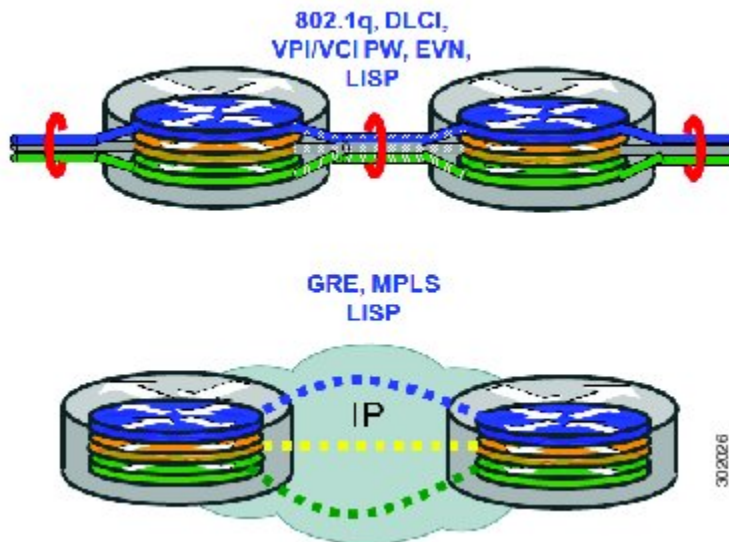
**Figure 2: Device Level Virtualization**



**Path Level Virtualization**

VRF table separation is maintained across network paths using any number of traditional mechanisms, as illustrated in the figure below. Single-hop path segmentation (hop-by-hop) is typically accomplished by techniques such as 802.1q VLANs, VPI/VCI PW, or EVN. LISP can also be used. Traditional multi-hop mechanisms include MPLS and GRE tunnels. As described in detail below, LISP binds VRFs to instance IDs (IIDs), and then these IIDs are included in the LISP header to provide data plane (traffic flow) separation for single or multihop needs.

**Figure 3: Path Level Virtualization**



### LISP Virtualization at the Device Level

Recalling that LISP implements Locator ID separation and, in so doing, creates two namespaces (EIDs and RLOCs), it is easy to see that LISP virtualization can consider both EID and RLOC namespaces for virtualization. That is, either or both can be virtualized.

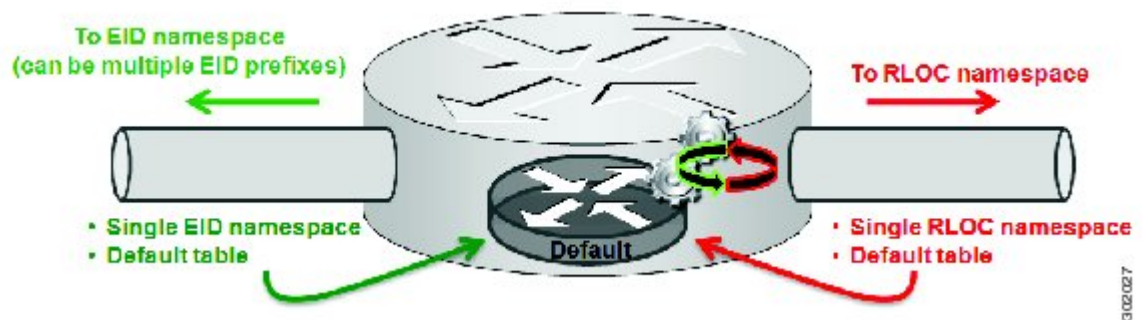
- EID virtualization—Enabled by binding a LISP instance ID to an EID VRF. Instance IDs are numerical tags defined in the LISP canonical address format (LCAF) draft, and are used to maintain address space segmentation in both the control plane and data plane.
- RLOC virtualization—Tying locator addresses and associated mapping services to the specific VRF within which they are reachable enables RLOC virtualization.

Because LISP considers virtualization of both EID and RLOC namespaces, two models of operation are defined: shared model and parallel model. For completeness, the discussions below begin first with a review of the default (non-virtualized) model of LISP, and then cover the details of shared and parallel models.

### Default (Non-Virtualized) LISP Model

By default, LISP is not virtualized in either EID space or RLOC space. That is, unless otherwise configured, both EID and RLOC addresses are resolved in the default (global) routing table. This concept is illustrated in the figure below.

**Figure 4: Default (Non-Virtualized) LISP Model (Resolves Both EID and RLOC Addresses in the Default (Global) Routing Table).**

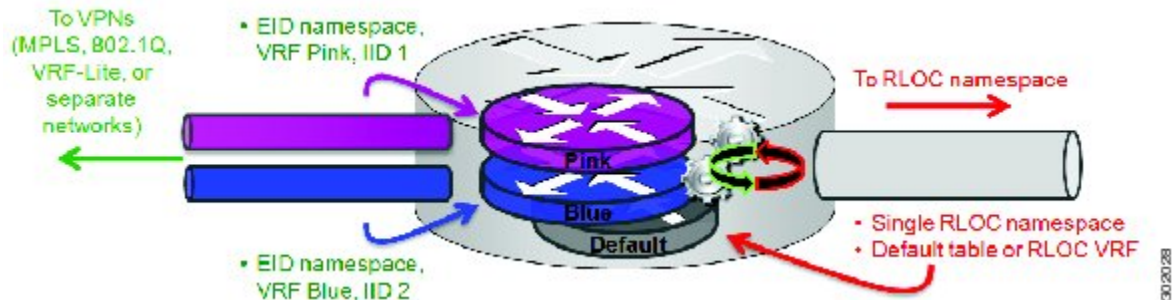


As shown in the figure above, both EID and RLOC addresses are resolved in the default table. The mapping system must also be reachable via the default table. This default model can be thought of as a single instantiation of the parallel model of LISP virtualization where EID and RLOC addresses are within the same namespace such as is the case in this default table.

## LISP Shared Model Virtualization

LISP shared model virtualized EID space is created by binding VRFs associated with an EID space to Instance IDs. A common, shared locator space is used by all virtualized EIDs. This concept is illustrated in the figure below.

**Figure 5: LISP shared model virtualization resolves EIDs within VRFs tied to Instance IDs. RLOC addresses are resolved in a common (shared) address space. The default (global) routing table is shown as the shared space.**



As shown in the figure above, EID space is virtualized through its association with VRFs, and these VRFs are tied to LISP Instance IDs to segment the control plane and data plane in LISP. A common, shared locator space, the default (global) table as shown in the figure above, is used to resolve RLOC addresses for all virtualized EIDs. The mapping system must also be reachable via the common locator space.

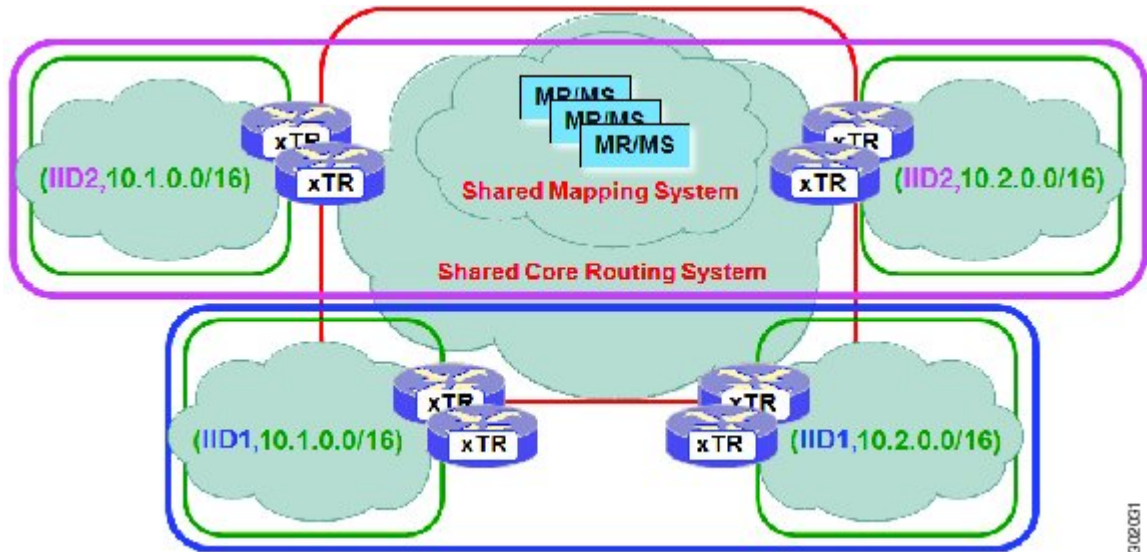
## LISP Shared Model Virtualization Architecture

Architecturally, LISP shared model virtualization can be deployed in single or multitenancy configurations. In the shared model single tenancy case, xTRs are dedicated to a customer but share infrastructure with other



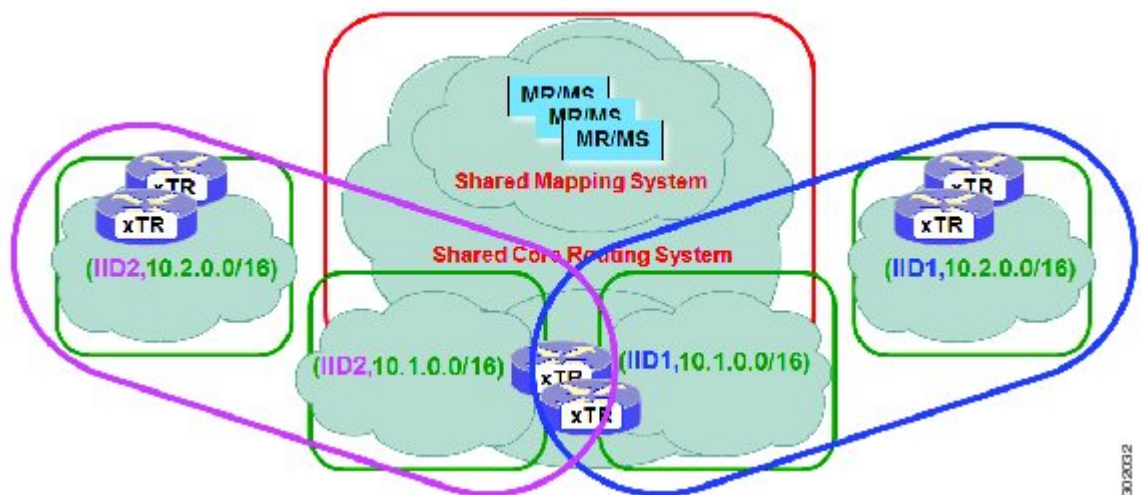
customers. Each customer and all sites associated with it use the same instance ID and are part of a VPN using their own EID namespace as shown in the figure below.

**Figure 6:** In a LISP shared model single tenancy use case, customers use their own xTRs and a shared common core network and mapping system. LISP instance IDs segment the LISP data plane and control plane.



In the shared model multitenancy case, a set of xTRs is shared (virtualized) among multiple customers. These customers also share a common infrastructure with other single and multitenant customers. Each customer and all sites associated with it use the same instance ID and are part of a VPN using their own EID namespace as shown in the figure below.

**Figure 7:** In a LISP shared model multitenancy use case, customer's use shared xTRs and a shared common core network and mapping system. LISP instance IDs segment the LISP data plane and control plane.



## LISP Shared Model Virtualization Implementation Considerations and Caveats

When LISP Shared Model is implemented, several important considerations and caveats are important. Instance IDs must be unique to an EID VRF. Review the example below:

```
xTR-1(config)# vrf definition alpha
xTR-1(config-vrf)# address-family ipv4
xTR-1(config-vrf-af)# exit
xTR-1(config)# vrf definition beta
xTR-1(config-vrf)# address-family ipv4
xTR-1(config-vrf-af)# exit
xTR-1(config-vrf)# exit
xTR-1(config)# router lisp
xTR-1(config-router-lisp)# eid-table vrf alpha instance-id 101
xTR-1(config-router-lisp-eid-table)# exit
xTR-1(config-router-lisp)# eid-table vrf beta instance-id 101
Instance ID 101 is bound to the vrf alpha EID table.
```

In the above example, two EID VRFs are created: alpha and beta. Under the **router lisp** command, an EID table VRF named alpha is specified and associated with the instance ID 101. Next, an EID table VRF named beta is specified and also associated with the instance ID 101. As indicated by the router, this is not permissible since instance ID 101 is already associated with the EID VRF named alpha. That is, you cannot connect the same instance-id to more than one EID VRF.

## How to Configure LISP Shared Model Virtualization

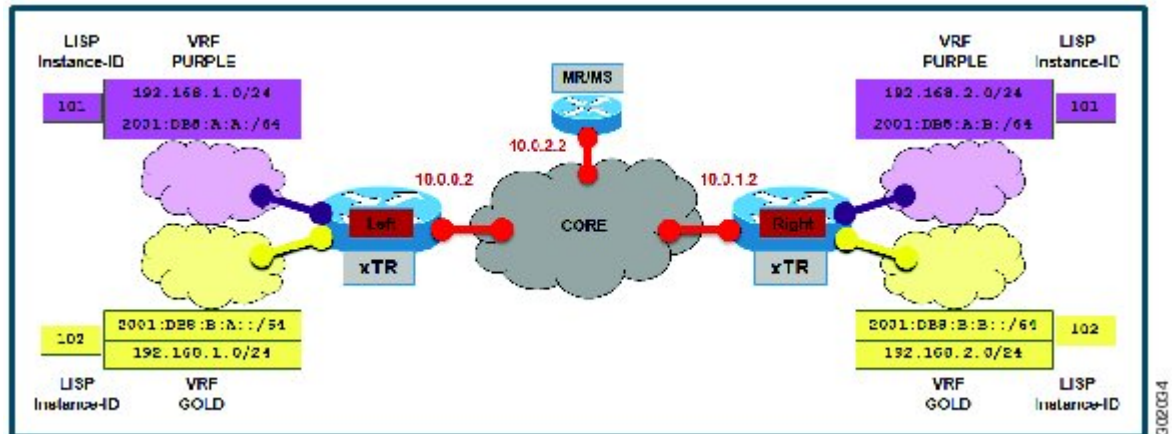
### Configure Simple LISP Shared Model Virtualization

Perform this task to enable and configure LISP ITR/ETR (xTR) functionality with LISP map server and map resolver to implement LISP shared model virtualization. This LISP shared model reference configuration is for a very simple two-site LISP topology, including xTRs and an MS/MR.

The configuration implemented in this task and illustrated in the figure below shows a basic LISP shared model virtualization solution. In this example, two LISP sites are deployed, each containing two VRFs:

PURPLE and GOLD. LISP is used to provide virtualized connectivity between these two sites across a common IPv4 core, while maintaining address separation between the two VRFs.

**Figure 8: Simple LISP Site with virtualized IPv4 and IPv6 EIDs and a shared IPv4 core**



Each LISP Site uses a single edge router configured as both an ITR and ETR (xTR), with a single connection to its upstream provider. The RLOC is IPv4, and IPv4 and IPv6 EID prefixes are configured. Each LISP site registers to a map server/map resolver (MS/MR) device located in the network core within the shared RLOC address space. The topology used in this most basic LISP configuration is shown in the figure above.

The components illustrated in the topology shown in the figure above are described below:

- **LISP site:**

- The CPE functions as a LISP ITR and ETR (xTR).
- Both LISP xTRs have two VRFs: GOLD and PURPLE, with each VRF containing both IPv4 and IPv6 EID-prefixes, as shown in the figure above. Note the overlapping prefixes, used for illustration purposes. A LISP instance-id is used to maintain separation between two VRFs. Note that in this example, the share key is configured "per-site" and not "per-VRF." (Case 2 illustrates a configuration where the shared key is per-VPN.)
- Each LISP xTR has a single RLOC connection to a shared IPv4 core network.

- **Mapping system:**

- One map server/map resolver system is shown in the figure above and assumed available for the LISP xTR to register to. The MS/MR has an IPv4 RLOC address of 10.0.2.2, within the shared IPv4 core.
- The map server site configurations are virtualized using LISP instance-ids to maintain separation between the two VRFs.

Perform the steps in this task (once through for each xTR in the LISP site) to enable and configure LISP ITR and ETR (xTR) functionality when using a LISP map-server and map-resolver for mapping services. The example configurations at the end of this task show the full configuration for two xTRs (xTR1 and xTR2).



## Before You Begin

The configuration below assumes that the referenced VRFs were created using the **vrf definition** command.

## SUMMARY STEPS

1. **configure terminal**
2. **router lisp**
3. **eid-table vrfvrf-name instance-id instance-id**
4. Do one of the following:
  - **database-mapping EID-prefix/prefix-length locator priority priority weight weight**
  - **database-mapping EID-prefix/prefix-length locator priority priority weight weight**
5. Repeat Step 4 until all EID-to-RLOC mappings for the LISP site are configured.
6. **exit**
7. **ipv4 itr**
8. **ipv4 etr**
9. **ipv4 itr map-resolver map-resolver-address**
10. **ipv4 etr map-server map-server-address key key-type authentication-key**
11. **ipv6 itr**
12. **ipv6 etr**
13. **ipv6 itr map-resolver map-resolver-address**
14. **ipv6 etr map-server map-server-address key key-type authentication-key**
15. **exit**
16. **ip route ipv4-prefix next-hop**
17. **exit**

## DETAILED STEPS

	Command or Action	Purpose
<b>Step 1</b>	<b>configure terminal</b>  <b>Example:</b> Router# configure terminal	Enters global configuration mode.
<b>Step 2</b>	<b>router lisp</b>  <b>Example:</b> Router(config)# router lisp	Enters LISP configuration mode ( software only).

	Command or Action	Purpose
<b>Step 3</b>	<p><b>eid-table vrf</b> <i>vrf-name</i> <b>instance-id</b> <i>instance-id</i></p> <p><b>Example:</b></p> <pre>Router(config-router-lisp)# eid-table vrf GOLD instance-id 102</pre>	<p>Configures an association between a VRF table and a LISP instance ID, and enters <code>eid-table</code> configuration submode.</p> <ul style="list-style-type: none"> <li>In this example, the VRF table GOLD and instance-id 102 are associated together.</li> </ul>
<b>Step 4</b>	<p>Do one of the following:</p> <ul style="list-style-type: none"> <li><b>database-mapping</b> <i>EID-prefix/prefix-length locator</i> <b>priority</b> <i>priority weight</i> <b>weight</b></li> <li><b>database-mapping</b> <i>EID-prefix/prefix-length locator</i> <b>priority</b> <i>priority weight</i> <b>weight</b></li> </ul> <p><b>Example:</b></p> <pre>Router(config-router-lisp-eid-table)# database-mapping 192.168.1.0/24 10.0.0.2 priority 1 weight 100</pre> <p><b>Example:</b></p> <pre>Router(config-router-lisp-eid-table)# database-mapping 192.168.1.0/24 ipv4-interface Ethernet0/0 priority 1 weight 100</pre>	<p>Configures an EID-to-RLOC mapping relationship and its associated traffic policy for this LISP site.</p> <ul style="list-style-type: none"> <li>In the first example, a single IPv4 EID prefix, 192.168.1.0/24, is being associated with the single IPv4 RLOC 10.0.0.2.</li> <li>In the second example, the alternative configuration shows the use of the dynamic interface form of the <b>database-mapping</b> command. This form is useful when the RLOC address is obtained dynamically, such as via DHCP.</li> </ul>
<b>Step 5</b>	<p>Repeat Step 4 until all EID-to-RLOC mappings for the LISP site are configured.</p> <p><b>Example:</b></p> <pre>Router(config-router-lisp-eid-table)# database-mapping 2001:db8:b:a::/64 10.0.0.2 priority 1 weight 100</pre>	<p>Configures an EID-to-RLOC mapping relationship and its associated traffic policy for this LISP site.</p>
<b>Step 6</b>	<p><b>exit</b></p> <p><b>Example:</b></p> <pre>Router(config-router-lisp-eid-table)# exit</pre>	<p>Exits <code>eid-table</code> configuration submode and returns to LISP configuration mode.</p>
<b>Step 7</b>	<p><b>ipv4 itr</b></p> <p><b>Example:</b></p> <pre>Router(config-router-lisp)# ipv4 itr</pre>	<p>Enables LISP ITR functionality for the IPv4 address family.</p>

	Command or Action	Purpose
<b>Step 8</b>	<b>ipv4 etr</b>  <b>Example:</b> <pre>Router(config-router-lisp)# ipv4 etr</pre>	Enables LISP ETR functionality for the IPv4 address family.
<b>Step 9</b>	<b>ipv4 itr map-resolver map-resolver-address</b>  <b>Example:</b> <pre>Router(config-router-lisp)# ipv4 itr map-resolver 10.0.2.2</pre>	Configures a locator address for the LISP map resolver to which this router will send map request messages for IPv4 EID-to-RLOC mapping resolutions. <ul style="list-style-type: none"> <li>The locator address of the map resolver may be an IPv4 or IPv6 address. In this example, because each xTR has only IPv4 RLOC connectivity, the map resolver is reachable using its IPv4 locator address. (See the <i>LISP Command Reference Guide</i> for more details.)</li> </ul> <p><b>Note</b> Up to two map resolvers may be configured if multiple map resolvers are available. (See the <i>LISP Command Reference Guide</i> for more details.)</p>
<b>Step 10</b>	<b>ipv4 etr map-server map-server-address key key-type authentication-key</b>  <b>Example:</b> <pre>Router(config-router-lisp)# ipv4 etr map-server 10.0.2.2 key 0 Left-key</pre>	Configures a locator address for the LISP map server and an authentication key for which this router, acting as an IPv4 LISP ETR, will use to register with the LISP mapping system. <ul style="list-style-type: none"> <li>The map server must be configured with EID prefixes and instance IDs matching those configured on this ETR and with an identical authentication key.</li> </ul> <p><b>Note</b> The locator address of the map server may be an IPv4 or IPv6 address. In this example, because each xTR has only IPv4 RLOC connectivity, the map-server is reachable using its IPv4 locator addresses. (See the <i>LISP Command Reference Guide</i> for more details.)</p>
<b>Step 11</b>	<b>ipv6 itr</b>  <b>Example:</b> <pre>Router(config-router-lisp)# ipv6 itr</pre>	Enables LISP ITR functionality for the IPv6 address family.
<b>Step 12</b>	<b>ipv6 etr</b>  <b>Example:</b> <pre>Router(config-router-lisp)# ipv6 etr</pre>	Enables LISP ETR functionality for the IPv6 address family.
<b>Step 13</b>	<b>ipv6 itr map-resolver map-resolver-address</b>  <b>Example:</b> <pre>Router(config-router-lisp)# ipv6 itr map-resolver 10.0.2.2</pre>	Configures a locator address for the LISP map resolver to which this router will send map request messages for IPv6 EID-to-RLOC mapping resolutions. <ul style="list-style-type: none"> <li>The locator address of the map resolver may be an IPv4 or IPv6 address. In this example, because each xTR has only IPv4 RLOC connectivity, the map-resolver is reachable using its IPv4 locator</li> </ul>

	Command or Action	Purpose
		<p>addresses. (See the <i>LISP Command Reference Guide</i> for more details.)</p> <p><b>Note</b> Up to two map resolvers may be configured if multiple map resolvers are available. (See the <i>LISP Command Reference Guide</i> for more details.)</p>
<b>Step 14</b>	<p><b>ipv6 etr map-server map-server-address key key-type authentication-key</b></p> <p><b>Example:</b></p> <pre>Router(config-router-lisp)# ipv6 etr map-server 10.0.2.2 key 0 Left-key</pre>	<p>Configures a locator address for the LISP map-server and an authentication key that this router, acting as an IPv6 LISP ETR, will use to register to the LISP mapping system.</p> <ul style="list-style-type: none"> <li>The map-server must be configured with EID prefixes and instance IDs matching those configured on this ETR and with an identical authentication key.</li> </ul> <p><b>Note</b> The locator address of the map-server may be an IPv4 or IPv6 address. In this example, because each xTR has only IPv4 RLOC connectivity, the map-server is reachable using its IPv4 locator addresses. (See the <i>LISP Command Reference Guide</i> for more details.)</p>
<b>Step 15</b>	<p><b>exit</b></p> <p><b>Example:</b></p> <pre>Router(config-router-lisp)# exit</pre>	<p>Exits LISP configuration mode and returns to global configuration mode.</p>
<b>Step 16</b>	<p><b>ip route ipv4-prefix next-hop</b></p> <p><b>Example:</b></p> <pre>Router(config)# ip route 0.0.0.0 0.0.0.0 10.0.0.1</pre>	<p>Configures a default route to the upstream next hop for all IPv4 destinations.</p> <ul style="list-style-type: none"> <li>All IPv4 EID-sourced packets destined to both LISP and non-LISP sites are forwarded in one of two ways: <ul style="list-style-type: none"> <li>LISP-encapsulated to a LISP site when traffic is LISP-to-LISP</li> <li>natively forwarded when traffic is LISP-to-non-LISP</li> </ul> </li> <li>Packets are deemed to be a candidate for LISP encapsulation when they are sourced from a LISP EID and the destination matches one of the following entries: <ul style="list-style-type: none"> <li>a current map-cache entry</li> <li>a default route with a legitimate next-hop</li> <li>no route at all</li> </ul> </li> </ul> <p>In this configuration example, because the xTR has IPv4 RLOC connectivity, a default route to the upstream SP is used for all IPv4 packets to support LISP processing.</p>

	Command or Action	Purpose
Step 17	<b>exit</b>  <b>Example:</b> Router(config)# exit	Exits global configuration mode.

**Example:**

The examples below show the complete configuration for the LISP topology illustrated in the figure shown above the task steps and follows the examples in the steps in this task. On the xTRs, the VRFs and EID prefixes are assumed to be attached to VLANs configured on the devices.

Example configuration for the Left xTR:

```

hostname Left-xTR
!
ipv6 unicast-routing
!
vrf definition PURPLE
 address-family ipv4
 exit
 address-family ipv6
 exit
!
vrf definition GOLD
 address-family ipv4
 exit
 address-family ipv6
 exit
!
interface Ethernet0/0
 ip address 10.0.0.2 255.255.255.0
!
interface Ethernet1/0.1
 encapsulation dot1q 101
 vrf forwarding PURPLE
 ip address 192.168.1.1 255.255.255.0
 ipv6 address 2001:DB8:A:A::1/64
!
interface Ethernet1/0.2
 encapsulation dot1q 102
 vrf forwarding GOLD
 ip address 192.168.1.1 255.255.255.0
 ipv6 address 2001:DB8:B:A::1/64
!
router lisp
 eid-table vrf PURPLE instance-id 101
  database-mapping 192.168.1.0/24 10.0.0.2 priority 1 weight 1
  database-mapping 2001:DB8:A:A::/64 10.0.0.2 priority 1 weight 1
 eid-table vrf GOLD instance-id 102
  database-mapping 192.168.1.0/24 10.0.0.2 priority 1 weight 1
  database-mapping 2001:DB8:B:A::/64 10.0.0.2 priority 1 weight 1
 exit
!
ipv4 itr map-resolver 10.0.2.2
ipv4 itr
ipv4 etr map-server 10.0.2.2 key Left-key
ipv4 etr
ipv6 itr map-resolver 10.0.2.2
ipv6 itr
ipv6 etr map-server 10.0.2.2 key Left-key

```

```

    ipv6 etr
    exit
    !
ip route 0.0.0.0 0.0.0.0 10.0.0.1
    !

```

Example configuration for Right xTR:

```

hostname Right-xTR
    !
ipv6 unicast-routing
    !
vrf definition PURPLE
    address-family ipv4
    exit
    address-family ipv6
    exit
    !
vrf definition GOLD
    address-family ipv4
    exit
    address-family ipv6
    exit
    !
interface Ethernet0/0
    ip address 10.0.1.2 255.255.255.0
    !
interface Ethernet1/0.1
    encapsulation dot1q 101
    vrf forwarding PURPLE
    ip address 192.168.2.1 255.255.255.0
    ipv6 address 2001:DB8:A:B::1/64
    !
interface Ethernet1/0.2
    encapsulation dot1q 102
    vrf forwarding GOLD
    ip address 192.168.2.1 255.255.255.0
    ipv6 address 2001:DB8:B:B::1/64
    !
router lisp
    eid-table vrf PURPLE instance-id 101
        database-mapping 192.168.2.0/24 10.0.1.2 priority 1 weight 1
        database-mapping 2001:DB8:A:B::/64 10.0.1.2 priority 1 weight 1
    eid-table vrf GOLD instance-id 102
        database-mapping 192.168.2.0/24 10.0.1.2 priority 1 weight 1
        database-mapping 2001:DB8:B:B::/64 10.0.1.2 priority 1 weight 1
    exit
    !
    ipv4 itr map-resolver 10.0.2.2
    ipv4 itr
    ipv4 etr map-server 10.0.2.2 key Right-key
    ipv4 etr
    ipv6 itr map-resolver 10.0.2.2
    ipv6 itr
    ipv6 etr map-server 10.0.2.2 key Right-key
    ipv6 etr
    exit
    !
ip route 0.0.0.0 0.0.0.0 10.0.1.1
    !

```

## Configuring a Private LISP Mapping System for LISP Shared Model Virtualization

Perform this task to configure and enable standalone LISP map server/map resolver functionality for LISP shared model virtualization. In this task, a Cisco router is configured as a standalone map server/map resolver (MR/MS) for a private LISP mapping system. Because the MR/MS is configured as a stand-alone device, it has no need for LISP Alternate Logical Topology (ALT) connectivity. All relevant LISP sites must be



configured to register with this map server so that this map server has full knowledge of all registered EID Prefixes within the (assumed) private LISP system.

## SUMMARY STEPS

1. **enable**
2. **configure terminal**
3. **router lisp**
4. **site *site-name***
5. **authentication-key [*key-type*] *authentication-key***
6. **eid-prefix *instance-id* *EID-prefix***
7. **eid-prefix *instance-id* *EID-prefix***
8. **exit**
9. **ipv4 map-resolver**
10. **ipv4 map-server**
11. **ipv6 map-resolver**
12. **ipv6 map-server**
13. **end**

## DETAILED STEPS

	Command or Action	Purpose
<b>Step 1</b>	<b>enable</b>  <b>Example:</b> Router> enable	Enables privileged EXEC mode. <ul style="list-style-type: none"> <li>• Enter your password if prompted.</li> </ul>
<b>Step 2</b>	<b>configure terminal</b>  <b>Example:</b> Router# configure terminal	Enters global configuration mode.
<b>Step 3</b>	<b>router lisp</b>  <b>Example:</b> Router(config)# router lisp	Enters LISP configuration mode (IOS only).
<b>Step 4</b>	<b>site <i>site-name</i></b>  <b>Example:</b> Router(config-router-lisp)# site Left	Specifies a LISP site named Left and enters LISP site configuration mode. <p><b>Note</b> A LISP site name is locally significant to the map server on which it is configured. It has no relevance anywhere else. This name is used solely as an administrative means of associating EID-prefix or prefixes with an authentication key and other site-related mechanisms.</p>

	Command or Action	Purpose
<b>Step 5</b>	<p><b>authentication-key</b> <i>[key-type]</i> <i>authentication-key</i></p> <p><b>Example:</b></p> <pre>Router(config-router-lisp-site)# authentication-key 0 Left-key</pre>	<p>Configures the password used to create the SHA-2 HMAC hash for authenticating the map register messages sent by an ETR when registering to the map server.</p> <p><b>Note</b> The LISP ETR must be configured with an identical authentication key as well as matching EID prefixes and instance IDs.</p>
<b>Step 6</b>	<p><b>eid-prefix instance-id</b> <i>instance-id EID-prefix</i></p> <p><b>Example:</b></p> <pre>Router(config-router-lisp-site)# eid-prefix instance-id 102 192.168.1.0/24</pre>	<p>Configures an EID prefix and instance ID that are allowed in a map register message sent by an ETR when registering to this map server. Repeat this step as necessary to configure additional EID prefixes under this LISP site.</p> <ul style="list-style-type: none"> <li>In this example, the IPv4 EID prefix 192.168.1.0/24 and instance ID 102 are associated together. To complete this task, an IPv6 EID prefix is required.</li> </ul>
<b>Step 7</b>	<p><b>eid-prefix instance-id</b> <i>instance-id EID-prefix</i></p> <p><b>Example:</b></p> <pre>Router(config-router-lisp-site)# eid-prefix instance-id 102 2001:db8:a:b::/64</pre>	<p>Configures an EID prefix and instance ID that are allowed in a map register message sent by an ETR when registering to this map server.</p> <ul style="list-style-type: none"> <li>In this example, the IPv6 EID prefix 2001:db8:a:b::/64 and instance ID 102 are associated together.</li> </ul>
<b>Step 8</b>	<p><b>exit</b></p> <p><b>Example:</b></p> <pre>Router(config-router-lisp-site)# exit</pre>	<p>Exits LISP site configuration mode and returns to LISP configuration mode.</p>
<b>Step 9</b>	<p><b>ipv4 map-resolver</b></p> <p><b>Example:</b></p> <pre>Router(config-router-lisp)# ipv4 map-resolver</pre>	<p>Enables LISP map resolver functionality for EIDs in the IPv4 address family.</p>
<b>Step 10</b>	<p><b>ipv4 map-server</b></p> <p><b>Example:</b></p> <pre>Router(config-router-lisp)# ipv4 map-server</pre>	<p>Enables LISP map server functionality for EIDs in the IPv4 address family.</p>
<b>Step 11</b>	<p><b>ipv6 map-resolver</b></p> <p><b>Example:</b></p> <pre>Router(config-router-lisp)# ipv6 map-resolver</pre>	<p>Enables LISP map resolver functionality for EIDs in the IPv6 address family.</p>

	Command or Action	Purpose
<b>Step 12</b>	<b>ipv6 map-server</b>  <b>Example:</b> Router(config-router-lisp)# ipv6 map-server	Enables LISP map server functionality for EIDs in the IPv6 address family.
<b>Step 13</b>	<b>end</b>  <b>Example:</b> Router(config-router-lisp)# end	Exits LISP configuration mode and returns to privileged EXEC mode.

**Example:**

Example configuration for the map server/map resolver.

```

hostname MSMR
!
interface Ethernet0/0
 ip address 10.0.2.2 255.255.255.0
!
router lisp
!
site Left
 authentication-key Left-key
 eid-prefix instance-id 101 192.168.1.0/24
 eid-prefix instance-id 101 2001:DB8:A:A::/64
 eid-prefix instance-id 102 192.168.1.0/24
 eid-prefix instance-id 102 2001:DB8:B:A::/64
 exit
!
site Right
 authentication-key Right-key
 eid-prefix instance-id 101 192.168.2.0/24
 eid-prefix instance-id 101 2001:DB8:A:B::/64
 eid-prefix instance-id 102 192.168.2.0/24
 eid-prefix instance-id 102 2001:DB8:B:B::/64
 exit
!
ipv4 map-server
ipv4 map-resolver
ipv6 map-server
ipv6 map-resolver
exit
!
ip route 0.0.0.0 0.0.0.0 10.0.2.1

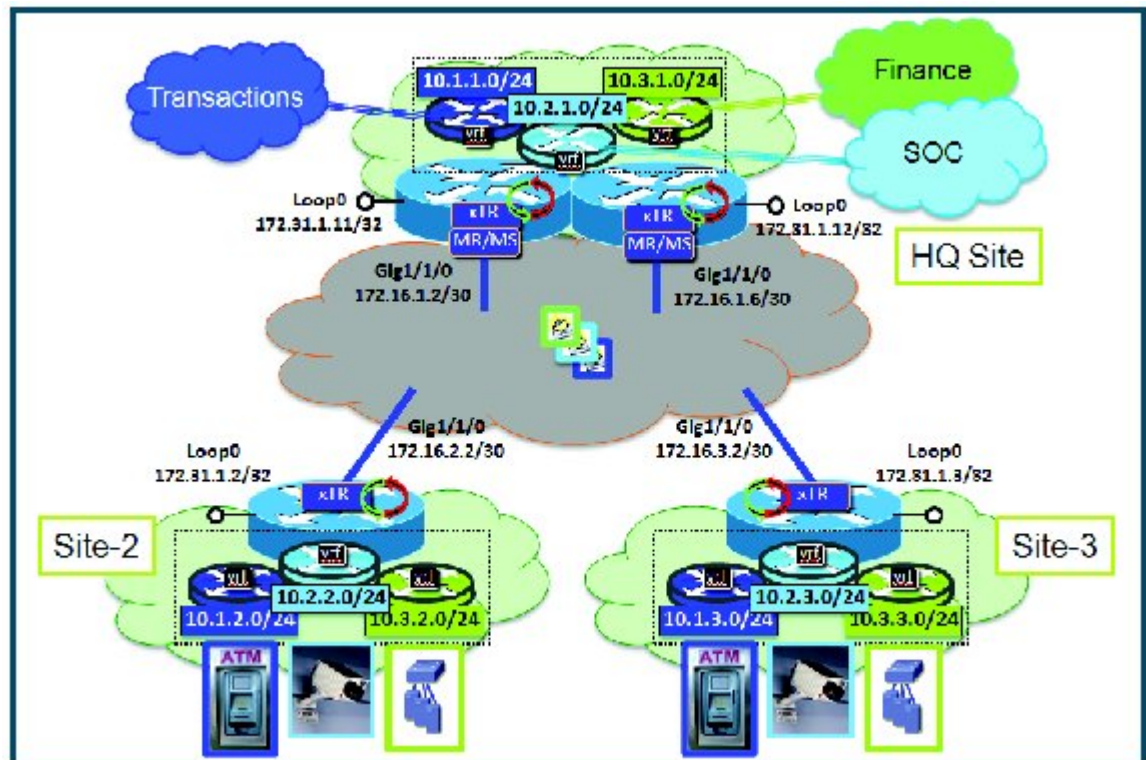
```

## Configure Large-Scale LISP Shared Model Virtualization

Perform this task to enable and configure LISP ITR/ETR (xTR) functionality with LISP map server and map resolver to implement LISP shared model virtualization. This LISP shared model reference configuration is for a large-scale, multiple-site LISP topology, including xTRs and multiple MS/MRs.

The configuration demonstrated in this task shows a more complex, larger scale LISP virtualization solution. In this task, an enterprise is deploying LISP Shared Model where EID space is virtualized over a shared, common core network. A subset of their entire network is illustrated in Figure 12. In this figure, three sites are shown: a multihomed "Headquarters" (HQ) site, and two remote office sites. The HQ site routers are deployed as xTRs and also as map resolver/map servers. The remote site routers only act as xTRs, and use the MS/MRs at the HQ site for LISP control plane support.

**Figure 9: Large Scale LISP Site with Virtualized IPv4 EIDs and a Shared IPv4 Core**



The components illustrated in the topology shown in the figure above are described below:

- **LISP site:**

- Each CPE router functions as a LISP ITR and ETR (xTR), as well as a Map-Server/Map-Resolver (MS/MR).
- Both LISP xTRs have three VRFs: TRANS (for transactions), SOC (for security operations), and FIN (for financials). Each VRF contains only IPv4 EID-prefixes. Note that no overlapping prefixes are used, but segmentation between each VRF by LISP instance-ids makes this possible. Also note that in this example, the separate authentication key is configured "per-vrf" and not "per-site." This affects both the xTR and MS configurations.
- The HQ LISP Site is multi-homed to the shared IPv4 core, but each xTR at the HQ site has a single RLOC.
- Each CPE also functions as an MS/MR to which the HQ and Remote LISP sites can register.
- The map server site configurations are virtualized using LISP instance IDs to maintain separation between the three VRFs.

- **LISP remote sites:**

- Each remote site CPE router functions as a LISP ITR and ETR (xTR).
- Each LISP xTRs has the same three VRFs as the HQ Site: TRANS, SOC, and FIN. Each VRF contains only IPv4 EID-prefixes.
- Each remote site LISP xTR has a single RLOC connection to a shared IPv4 core network.

### Before You Begin

The configuration below assumes that the referenced VRFs were created using the **vrf definition** command.

### SUMMARY STEPS

1. **configure terminal**
2. **router lisp**
3. **site** *site-name*
4. **authentication-key** [*key-type*] *authentication-key*
5. **eid-prefix instance-id** *instance-id* *EID-prefix/prefix-length* **accept-more-specifics**
6. **exit**
7. Repeat steps 3 through 6 for each LISP site to be configured.
8. **ipv4 map-resolver**
9. **ipv4 map-server**
10. **eid-table** *vrfvrf-name* **instance-id** *instance-id*
11. **database-mapping** *EID-prefix/prefix-length* *locator* **priority** *priority* **weight** *weight*
12. Repeat Step 11 until all EID-to-RLOC mappings within this eid-table vrf and instance ID for the LISP site are configured.
13. **ipv4 etr map-server** *map-server-address* **key** *key-type* *authentication-key*
14. Repeat Step 13 to configure another locator address for the same LISP map server
15. **exit**
16. **ipv4 itr map-resolver** *map-resolver-address*
17. Repeat Step 16 to configure another locator address for the LISP map resolver
18. **ipv4 itr**
19. **ipv4 etr**
20. **exit**
21. **ip route** *ipv4-prefix* *next-hop*
22. **exit**

## DETAILED STEPS

	Command or Action	Purpose
<b>Step 1</b>	<b>configure terminal</b>  <b>Example:</b> Router# configure terminal	Enters global configuration mode.
<b>Step 2</b>	<b>router lisp</b>  <b>Example:</b> Router(config)# router lisp	Enters LISP configuration mode ( software only).
<b>Step 3</b>	<b>site <i>site-name</i></b>  <b>Example:</b> Router(config-router-lisp)# site TRANS	Specifies a LISP site named TRANS and enters LISP site configuration mode.  <b>Note</b> A LISP site name is locally significant to the map server on which it is configured. It has no relevance anywhere else. This name is used solely as an administrative means of associating EID-prefix or prefixes with an authentication key and other site-related mechanisms.
<b>Step 4</b>	<b>authentication-key [<i>key-type</i>]</b> <i>authentication-key</i>  <b>Example:</b> Router(config-router-lisp-site)# authentication-key 0 TRANS-key	Configures the password used to create the SHA-2 HMAC hash for authenticating the map register messages sent by an ETR when registering to the map server.  <b>Note</b> The LISP ETR must be configured with an identical authentication key as well as matching EID prefixes and instance IDs.
<b>Step 5</b>	<b>eid-prefix instance-id <i>instance-id</i></b> <i>EID-prefix/prefix-length</i> <b>accept-more-specifics</b>  <b>Example:</b> Router(config-router-lisp-site)# eid-prefix instance-id 1 10.1.0.0/16 accept-more-specifics	Configures an EID prefix and instance ID that are allowed in a map register message sent by an ETR when registering to this map server. Repeat this step as necessary to configure additional EID prefixes under this LISP site.  <ul style="list-style-type: none"> <li>In the example, EID-prefix 10.1.0.0/16 and instance-id 1 are associated together. The EID-prefix 10.1.0.0/16 is assumed to be an aggregate covering all TRANS EID-prefixes at all LISP Sites. The keyword <b>accept-more-specifics</b> is needed in this case to allow each site to register its more-specific EID-prefix contained within that aggregate. If aggregation is not possible, simply enter all EID-prefixes integrated within instance-id 1.</li> </ul>
<b>Step 6</b>	<b>exit</b>  <b>Example:</b> Router(config-router-lisp-site)# exit	Exits LISP site configuration mode and returns to LISP configuration mode.



	Command or Action	Purpose
<b>Step 7</b>	Repeat steps 3 through 6 for each LISP site to be configured.	In this example, steps 3 through 6 would be repeated for the site SOC and FIN as illustrated in the complete configuration example at the end of this task.
<b>Step 8</b>	<b>ipv4 map-resolver</b>  <b>Example:</b> <pre>Router(config-router-lisp)# ipv4 map-resolver</pre>	Enables LISP map resolver functionality for EIDs in the IPv4 address family.
<b>Step 9</b>	<b>ipv4 map-server</b>  <b>Example:</b> <pre>Router(config-router-lisp)# ipv4 map-server</pre>	Enables LISP map server functionality for EIDs in the IPv4 address family.
<b>Step 10</b>	<b>eid-table vrfvrf-name instance-id instance-id</b>  <b>Example:</b> <pre>Router(config-router-lisp)# eid-table vrf TRANS instance-id 1</pre>	Configures an association between a VRF table and a LISP instance ID, and enters eid-table configuration submode. <ul style="list-style-type: none"> <li>In this example, the VRF table TRANS and instance-id 1 are associated together.</li> </ul>
<b>Step 11</b>	<b>database-mapping EID-prefix/prefix-length locator priority priority weight weight</b>  <b>Example:</b> <pre>Router(config-router-lisp-eid-table)# database-mapping 10.1.1.0/24 172.16.1.2 priority 1 weight 100</pre>	Configures an EID-to-RLOC mapping relationship and its associated traffic policy for this LISP site. <ul style="list-style-type: none"> <li>In this example, the EID prefix 10.1.1.0/24 within instance-id 1 at this site is associated with the local IPv4 RLOC 172.16.1.2, as well as with the neighbor xTR RLOC 172.6.1.6.</li> </ul>
<b>Step 12</b>	Repeat Step 11 until all EID-to-RLOC mappings within this eid-table vrf and instance ID for the LISP site are configured.  <b>Example:</b> <pre>Router(config-router-lisp-eid-table)# database-mapping 10.1.1.0/24 172.16.1.6 priority 1 weight 100</pre>	Configures an EID-to-RLOC mapping relationship and its associated traffic policy for this LISP site.
<b>Step 13</b>	<b>ipv4 etr map-server map-server-address key key-type authentication-key</b>  <b>Example:</b> <pre>Router(config-router-lisp-eid-table)# ipv4 etr map-server 172.16.1.2 key 0 TRANS-key</pre>	Configures a locator address for the LISP map server and an authentication key for which this router, acting as an IPv4 LISP ETR, will use to register with the LISP mapping system. <ul style="list-style-type: none"> <li>In this example, the map server and authentication-key are specified here, within the eid-table subcommand mode, so that the authentication key is associated only with this instance ID, within this VPN.</li> </ul>

	Command or Action	Purpose
		<p><b>Note</b> The map server must be configured with EID prefixes and instance-ids matching the one(s) configured on this ETR, as well as an identical authentication key.</p> <p><b>Note</b> The locator address of the map server may be an IPv4 or IPv6 address. In this example, because each xTR has only IPv4 RLOC connectivity, the map server is reachable using its IPv4 locator addresses. (See the <i>LISP Command Reference Guide</i> for more details.)</p>
<b>Step 14</b>	<p>Repeat Step 13 to configure another locator address for the same LISP map server</p> <p><b>Example:</b></p> <pre>Router(config-router-lisp-eid-table)#   ipv4 etr map-server 172.16.1.6 key   0 TRANS-key</pre>	<p>Configures a locator address for the LISP map server and an authentication key for which this router, acting as an IPv4 LISP ETR, will use to register with the LISP mapping system.</p> <ul style="list-style-type: none"> <li>In this example, a redundant map server is configured. (Because the MS is co-located with the xTRs in this case, this command indicates that this xTR is pointing to itself for registration (and its neighbor xTR/MS/MR at the same site).)</li> </ul>
<b>Step 15</b>	<p><b>exit</b></p> <p><b>Example:</b></p> <pre>Router(config-router-lisp-eid-table)#   exit</pre>	<p>Exits eid-table configuration submode and returns to LISP configuration mode.</p>
<b>Step 16</b>	<p><b>ipv4 itr map-resolver map-resolver-address</b></p> <p><b>Example:</b></p> <pre>Router(config-router-lisp)# ipv4 itr   map-resolver 172.16.1.2</pre>	<p>Configures a locator address for the LISP map resolver to which this router will send map request messages for IPv4 EID-to-RLOC mapping resolutions.</p> <ul style="list-style-type: none"> <li>In this example, the map resolver is specified within router lisp configuration mode and inherited into all eid-table instances since nothing is related to any single instance ID. In addition, redundant map resolvers are configured. (Because the MR is co-located with the xTRs in this case, this command indicates that this xTR is pointing to itself for mapping resolution (and its neighbor xTR/MS/MR at the same site).)</li> <li>The locator address of the map resolver may be an IPv4 or IPv6 address. In this example, because each xTR has only IPv4 RLOC connectivity, the map resolver is reachable using its IPv4 locator address. (See the <i>LISP Command Reference Guide</i> for more details.)</li> </ul> <p><b>Note</b> Up to two map resolvers may be configured if multiple map resolvers are available. (See the <i>LISP Command Reference Guide</i> for more details.)</p>
<b>Step 17</b>	<p>Repeat Step 16 to configure another locator address for the LISP map resolver</p> <p><b>Example:</b></p> <pre>Router(config-router-lisp)# ipv4 itr   map-resolver 172.16.1.6</pre>	<p>Configures a locator address for the LISP map resolver to which this router will send map request messages for IPv4 EID-to-RLOC mapping resolutions.</p> <ul style="list-style-type: none"> <li>In this example, a redundant map resolver is configured. (Because the MR is co-located with the xTRs in this case, this command indicates that this xTR is pointing to itself for mapping resolution (and its neighbor xTR/MS/MR at the same site).)</li> </ul>

	Command or Action	Purpose
		<ul style="list-style-type: none"> <li>The locator address of the map resolver may be an IPv4 or IPv6 address. In this example, because each xTR has only IPv4 RLOC connectivity, the map resolver is reachable using its IPv4 locator address. (See the <i>LISP Command Reference Guide</i> for more details.)</li> </ul> <p><b>Note</b> Up to two map resolvers may be configured if multiple map resolvers are available. (See the <i>LISP Command Reference Guide</i> for more details.)</p>
<b>Step 18</b>	<b>ipv4 itr</b>  <b>Example:</b> <pre>Router(config-router-lisp)# ipv4 itr</pre>	Enables LISP ITR functionality for the IPv4 address family.
<b>Step 19</b>	<b>ipv4 etr</b>  <b>Example:</b> <pre>Router(config-router-lisp)# ipv4 etr</pre>	Enables LISP ETR functionality for the IPv4 address family.
<b>Step 20</b>	<b>exit</b>  <b>Example:</b> <pre>Router(config-router-lisp)# exit</pre>	Exits LISP configuration mode and returns to global configuration mode.
<b>Step 21</b>	<b>ip route <i>ipv4-prefix next-hop</i></b>  <b>Example:</b> <pre>Router(config)# ip route 0.0.0.0 0.0.0.0 172.16.1.1</pre>	<p>Configures a default route to the upstream next hop for all IPv4 destinations.</p> <ul style="list-style-type: none"> <li>All IPv4 EID-sourced packets destined to both LISP and non-LISP sites are forwarded in one of two ways: <ul style="list-style-type: none"> <li>LISP-encapsulated to a LISP site when traffic is LISP-to-LISP</li> <li>natively forwarded when traffic is LISP-to-non-LISP</li> </ul> </li> <li>Packets are deemed to be a candidate for LISP encapsulation when they are sourced from a LISP EID and the destination matches one of the following entries: <ul style="list-style-type: none"> <li>a current map-cache entry</li> <li>a default route with a legitimate next-hop</li> <li>no route at all</li> </ul> </li> </ul> <p>In this configuration example, because the xTR has IPv4 RLOC connectivity, a default route to the upstream SP is used for all IPv4 packets to support LISP processing.</p>

	Command or Action	Purpose
<b>Step 22</b>	<b>exit</b>  <b>Example:</b> Router(config)# exit	Exits global configuration mode.

**Example:**

The examples below show the complete configuration for the HQ-RTR-1 and HQ-RTR-2 (xTR/MS/MR located at the HQ Site), and Site2-xTR LISP devices illustrated in the figure above and in this task. Note that both HQ-RTR-1 and HQ-RTR-2 are provided in order to illustrate the proper method for configuring a LISP multihomed site.

Example configuration for HQ-RTR-1 with an xTR, a map server and a map resolver:

```

hostname HQ-RTR-1
!
vrf definition TRANS
 address-family ipv4
 exit
!
vrf definition SOC
 address-family ipv4
 exit
!
vrf definition FIN
 address-family ipv4
 exit
!
interface Loopback0
 description Management Loopback (in default space)
 ip address 172.31.1.11 255.255.255.255
!
interface GigabitEthernet0/0/0
 description WAN Link to IPv4 Core
 ip address 172.16.1.2 255.255.255.252
 negotiation auto
!
interface GigabitEthernet0/0/1
 vrf forwarding TRANS
 ip address 10.1.1.1 255.255.255.0
 negotiation auto
!
interface GigabitEthernet0/0/2
 vrf forwarding SOC
 ip address 10.2.1.1 255.255.255.0
 negotiation auto
!
interface GigabitEthernet0/0/3
 vrf forwarding FIN
 ip address 10.3.1.1 255.255.255.0
 negotiation auto
!
router lisp
 eid-table default instance-id 0
 database-mapping 172.31.1.11/32 172.16.1.2 priority 1 weight 50
 database-mapping 172.31.1.11/32 172.16.1.6 priority 1 weight 50
 ipv4 etr map-server 172.16.1.2 key DEFAULT-key
 ipv4 etr map-server 172.16.1.6 key DEFAULT-key
 exit

```

```

!
eid-table vrf TRANS instance-id 1
  database-mapping 10.1.1.0/24 172.16.1.2 priority 1 weight 50
  database-mapping 10.1.1.0/24 172.16.1.6 priority 1 weight 50
  ipv4 etr map-server 172.16.1.2 key TRANS-key
  ipv4 etr map-server 172.16.1.6 key TRANS-key
  exit
!
eid-table vrf SOC instance-id 2
  database-mapping 10.2.1.0/24 172.16.1.2 priority 1 weight 50
  database-mapping 10.2.1.0/24 172.16.1.6 priority 1 weight 50
  ipv4 etr map-server 172.16.1.2 key SOC-key
  ipv4 etr map-server 172.16.1.6 key SOC-key
  exit
!
eid-table vrf FIN instance-id 3
  database-mapping 10.3.1.0/24 172.16.1.2 priority 1 weight 50
  database-mapping 10.3.1.0/24 172.16.1.6 priority 1 weight 50
  ipv4 etr map-server 172.16.1.2 key FIN-key
  ipv4 etr map-server 172.16.1.6 key FIN-key
  exit
!
site DEFAULT
  authentication-key DEFAULT-key
  eid-prefix 172.31.1.0/24 accept-more-specifics
  exit
!
site TRANS
  authentication-key TRANS-key
  eid-prefix instance-id 1 10.1.0.0/16 accept-more-specifics
  exit
!
site SOC
  authentication-key SOC-key
  eid-prefix instance-id 2 10.2.0.0/16 accept-more-specifics
  exit
!
site FIN
  authentication-key FIN-key
  eid-prefix instance-id 3 10.3.0.0/16 accept-more-specifics
  exit
!
ipv4 map-server
ipv4 map-resolver
ipv4 itr map-resolver 172.16.1.2
ipv4 itr map-resolver 172.16.1.6
ipv4 itr
ipv4 etr
  exit
!
ip route 0.0.0.0 0.0.0.0 172.16.1.1

```

Example configuration for HQ-RTR-2 with an xTR, a map server and a map resolver:

```

hostname HQ-RTR-2
!
vrf definition TRANS
  address-family ipv4
  exit
!
vrf definition SOC
  address-family ipv4
  exit
!
vrf definition FIN
  address-family ipv4
  exit
!
interface Loopback0
  description Management Loopback (in default space)
  ip address 172.31.1.12 255.255.255.255
!
interface GigabitEthernet0/0/0

```

```

description WAN Link to IPv4 Core
ip address 172.16.1.6 255.255.255.252
negotiation auto
!
interface GigabitEthernet0/0/1
vrf forwarding TRANS
ip address 10.1.1.2 255.255.255.0
negotiation auto
!
interface GigabitEthernet0/0/2
vrf forwarding SOC
ip address 10.2.1.2 255.255.255.0
negotiation auto
!
interface GigabitEthernet0/0/3
vrf forwarding FIN
ip address 10.3.1.2 255.255.255.0
negotiation auto
!
router lisp
eid-table default instance-id 0
  database-mapping 172.31.1.12/32 172.16.1.2 priority 1 weight 50
  database-mapping 172.31.1.12/32 172.16.1.6 priority 1 weight 50
  ipv4 etr map-server 172.16.1.2 key DEFAULT-key
  ipv4 etr map-server 172.16.1.6 key DEFAULT-key
  exit
!
eid-table vrf TRANS instance-id 1
  database-mapping 10.1.1.0/24 172.16.1.2 priority 1 weight 50
  database-mapping 10.1.1.0/24 172.16.1.6 priority 1 weight 50
  ipv4 etr map-server 172.16.1.2 key TRANS-key
  ipv4 etr map-server 172.16.1.6 key TRANS-key
  exit
!
eid-table vrf SOC instance-id 2
  database-mapping 10.2.1.0/24 172.16.1.2 priority 1 weight 50
  database-mapping 10.2.1.0/24 172.16.1.6 priority 1 weight 50
  ipv4 etr map-server 172.16.1.2 key SOC-key
  ipv4 etr map-server 172.16.1.6 key SOC-key
  exit
!
eid-table vrf FIN instance-id 3
  database-mapping 10.3.1.0/24 172.16.1.2 priority 1 weight 50
  database-mapping 10.3.1.0/24 172.16.1.6 priority 1 weight 50
  ipv4 etr map-server 172.16.1.2 key FIN-key
  ipv4 etr map-server 172.16.1.6 key FIN-key
  exit
!
site DEFAULT
  authentication-key DEFAULT-key
  eid-prefix 172.31.1.0/24 accept-more-specifics
  exit
!
site TRANS
  authentication-key TRANS-key
  eid-prefix instance-id 1 10.1.0.0/16 accept-more-specifics
  exit
!
site SOC
  authentication-key SOC-key
  eid-prefix instance-id 2 10.2.0.0/16 accept-more-specifics
  exit
!
site FIN
  authentication-key FIN-key
  eid-prefix instance-id 3 10.3.0.0/16 accept-more-specifics
  exit
!
ipv4 map-server
ipv4 map-resolver
ipv4 itr map-resolver 172.16.1.2
ipv4 itr map-resolver 172.16.1.6
ipv4 itr

```



```

ipv4 etr
exit
!
ip route 0.0.0.0 0.0.0.0 172.16.1.5

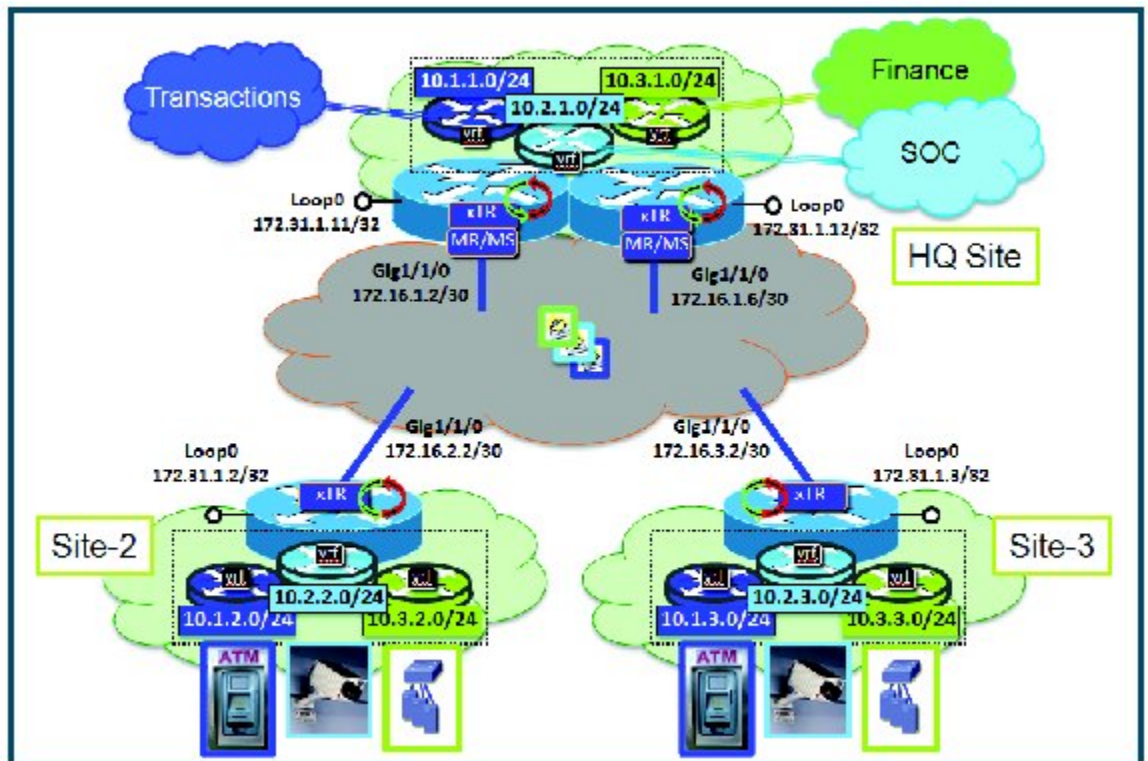
```

## Configure a Remote Site for Large-Scale LISP Shared Model Virtualization

Perform this task to enable and configure LISP ITR/ETR (xTR) functionality at a remote site to implement LISP shared model virtualization as part of a large-scale, multiple-site LISP topology.

The configuration demonstrated in this task is part of a more complex, larger scale LISP virtualization solution. In this task, the configuration applies to one of the remote sites shown in the figure below. In this task, the remote site routers only act as xTRs, and use the MS/MRs at the HQ site for LISP control plane support.

**Figure 10: Large Scale LISP Site with Virtualized IPv4 EIDs and a Shared IPv4 Core**



The components illustrated in the topology shown in the figure above are described below:

- **LISP remote sites:**
  - Each remote site CPE router functions as a LISP ITR and ETR (xTR).
  - Each LISP xTRs has the same three VRFs as the HQ Site: TRANS, SOC, and FIN. Each VRF contains only IPv4 EID-prefixes.
  - Each remote site LISP xTR has a single RLOC connection to a shared IPv4 core network.

## Before You Begin

The configuration below assumes that the referenced VRFs were created using the **vrf definition** command and that the Configure a Large-Scale LISP Shared Model Virtualization task has been performed at one or more central (headquarters) sites.

## SUMMARY STEPS

1. **configure terminal**
2. **router lisp**
3. **eid-table vrf***vrf-name* **instance-id** *instance-id*
4. **database-mapping** *EID-prefix/prefix-length locator* **priority** *priority* **weight** *weight*
5. **ipv4 etr map-server** *map-server-address* **key** *key-type* *authentication-key*
6. Repeat Step 13 to configure another locator address for the same LISP map server
7. **exit**
8. **ipv4 itr map-resolver** *map-resolver-address*
9. Repeat Step 16 to configure another locator address for the LISP map resolver
10. **ipv4 itr**
11. **ipv4 etr**
12. **exit**
13. **ip route** *ipv4-prefix* *next-hop*
14. **exit**

## DETAILED STEPS

	Command or Action	Purpose
<b>Step 1</b>	<b>configure terminal</b>  <b>Example:</b> Router# configure terminal	Enters global configuration mode.
<b>Step 2</b>	<b>router lisp</b>  <b>Example:</b> Router(config)# router lisp	Enters LISP configuration mode ( software only).
<b>Step 3</b>	<b>eid-table vrf</b> <i>vrf-name</i> <b>instance-id</b> <i>instance-id</i>  <b>Example:</b> Router(config-router-lisp)# eid-table vrf TRANS instance-id 1	Configures an association between a VRF table and a LISP instance ID, and enters eid-table configuration submenu.  • In this example, the VRF table TRANS and instance-id 1 are associated together.
<b>Step 4</b>	<b>database-mapping</b> <i>EID-prefix/prefix-length locator</i> <b>priority</b> <i>priority</i> <b>weight</b> <i>weight</i>	Configures an EID-to-RLOC mapping relationship and its associated traffic policy for this LISP site.

	Command or Action	Purpose
	<p><b>Example:</b></p> <pre>Router(config-router-lisp-eid-table)# database-mapping 10.1.2.0/24 172.16.2.2 priority 1 weight 100</pre>	<ul style="list-style-type: none"> <li>In this example, the EID prefix 10.1.2.0/24 within instance-id 1 at this site is associated with the local IPv4 RLOC 172.16.2.2.</li> </ul> <p><b>Note</b> Repeat this step until all EID-to-RLOC mappings within this eid-table vrf and instance ID for the LISP site are configured.</p>
<b>Step 5</b>	<p><b>ipv4 etr map-server map-server-address key key-type authentication-key</b></p> <p><b>Example:</b></p> <pre>Router(config-router-lisp-eid-table)# ipv4 etr map-server 172.16.1.2 key 0 TRANS-key</pre>	<p>Configures a locator address for the LISP map server and an authentication key for which this router, acting as an IPv4 LISP ETR, will use to register with the LISP mapping system.</p> <ul style="list-style-type: none"> <li>In this example, the map server and authentication-key are specified here, within the eid-table subcommand mode, so that the authentication key is associated only with this instance ID, within this VPN.</li> </ul> <p><b>Note</b> The map server must be configured with EID prefixes and instance-ids matching the one(s) configured on this ETR, as well as an identical authentication key.</p> <p><b>Note</b> The locator address of the map server may be an IPv4 or IPv6 address. In this example, because each xTR has only IPv4 RLOC connectivity, the map server is reachable using its IPv4 locator addresses. (See the <i>LISP Command Reference Guide</i> for more details.)</p>
<b>Step 6</b>	<p>Repeat Step 13 to configure another locator address for the same LISP map server</p> <p><b>Example:</b></p> <pre>Router(config-router-lisp-eid-table)# ipv4 etr map-server 172.16.1.6 key 0 TRANS-key</pre>	<p>Configures a locator address for the LISP map server and an authentication key for which this router, acting as an IPv4 LISP ETR, will use to register with the LISP mapping system.</p> <ul style="list-style-type: none"> <li>In this example, a redundant map server is configured. (Because the MS is co-located with the xTRs in this case, this command indicates that this xTR is pointing to itself for registration (and its neighbor xTR/MS/MR at the same site).)</li> </ul>
<b>Step 7</b>	<p><b>exit</b></p> <p><b>Example:</b></p> <pre>Router(config-router-lisp-eid-table)# exit</pre>	<p>Exits eid-table configuration submode and returns to LISP configuration mode.</p>
<b>Step 8</b>	<p><b>ipv4 itr map-resolver map-resolver-address</b></p> <p><b>Example:</b></p> <pre>Router(config-router-lisp)# ipv4 itr map-resolver 172.16.1.2</pre>	<p>Configures a locator address for the LISP map resolver to which this router will send map request messages for IPv4 EID-to-RLOC mapping resolutions.</p> <ul style="list-style-type: none"> <li>In this example, the map resolver is specified within router lisp configuration mode and inherited into all eid-table instances since nothing is related to any single instance ID. In addition, redundant map resolvers are configured. (Because the MR is co-located with the xTRs in this case, this command indicates that this xTR is pointing to itself for mapping resolution (and its neighbor xTR/MS/MR at the same site).)</li> <li>The locator address of the map resolver may be an IPv4 or IPv6 address. In this example, because each xTR has only IPv4 RLOC connectivity,</li> </ul>

	Command or Action	Purpose
		<p>the map resolver is reachable using its IPv4 locator address. (See the <i>LISP Command Reference Guide</i> for more details.)</p> <p><b>Note</b> Up to two map resolvers may be configured if multiple map resolvers are available. (See the <i>LISP Command Reference Guide</i> for more details.)</p>
<b>Step 9</b>	<p>Repeat Step 16 to configure another locator address for the LISP map resolver</p> <p><b>Example:</b></p> <pre>Router(config-router-lisp)# ipv4 itr map-resolver 172.16.1.6</pre>	<p>Configures a locator address for the LISP map resolver to which this router will send map request messages for IPv4 EID-to-RLOC mapping resolutions.</p> <ul style="list-style-type: none"> <li>• In this example, a redundant map resolver is configured. (Because the MR is co-located with the xTRs in this case, this command indicates that this xTR is pointing to itself for mapping resolution (and its neighbor xTR/MS/MR at the same site).</li> <li>• The locator address of the map resolver may be an IPv4 or IPv6 address. In this example, because each xTR has only IPv4 RLOC connectivity, the map resolver is reachable using its IPv4 locator address. (See the <i>LISP Command Reference Guide</i> for more details.)</li> </ul> <p><b>Note</b> Up to two map resolvers may be configured if multiple map resolvers are available. (See the <i>LISP Command Reference Guide</i> for more details.)</p>
<b>Step 10</b>	<p><b>ipv4 itr</b></p> <p><b>Example:</b></p> <pre>Router(config-router-lisp)# ipv4 itr</pre>	Enables LISP ITR functionality for the IPv4 address family.
<b>Step 11</b>	<p><b>ipv4 etr</b></p> <p><b>Example:</b></p> <pre>Router(config-router-lisp)# ipv4 etr</pre>	Enables LISP ETR functionality for the IPv4 address family.
<b>Step 12</b>	<p><b>exit</b></p> <p><b>Example:</b></p> <pre>Router(config-router-lisp)# exit</pre>	Exits LISP configuration mode and returns to global configuration mode.
<b>Step 13</b>	<p><b>ip route <i>ipv4-prefix next-hop</i></b></p> <p><b>Example:</b></p> <pre>Router(config)# ip route 0.0.0.0 0.0.0.0 172.16.2.1</pre>	<p>Configures a default route to the upstream next hop for all IPv4 destinations.</p> <ul style="list-style-type: none"> <li>• All IPv4 EID-sourced packets destined to both LISP and non-LISP sites are forwarded in one of two ways: <ul style="list-style-type: none"> <li>• LISP-encapsulated to a LISP site when traffic is LISP-to-LISP</li> <li>• natively forwarded when traffic is LISP-to-non-LISP</li> </ul> </li> </ul>

	Command or Action	Purpose
		<ul style="list-style-type: none"> <li>• Packets are deemed to be a candidate for LISP encapsulation when they are sourced from a LISP EID and the destination matches one of the following entries: <ul style="list-style-type: none"> <li>• a current map-cache entry</li> <li>• a default route with a legitimate next-hop</li> <li>• no route at all</li> </ul> </li> </ul> <p>In this configuration example, because the xTR has IPv4 RLOC connectivity, a default route to the upstream SP is used for all IPv4 packets to support LISP processing.</p>
<b>Step 14</b>	<b>exit</b>  <b>Example:</b>  Router(config)# exit	Exits global configuration mode.

**Example:**

The example below show the complete configuration for the remote site device illustrated in the figure above and in this task. Note that only one remote site configuration is shown here.

Example configuration for Site 2 with an xTR, and using the map server and a map resolver from the HQ site:

```

hostname Site2-xTR
!
vrf definition TRANS
address-family ipv4
exit
!
vrf definition SOC
address-family ipv4
exit
!
vrf definition FIN
address-family ipv4
exit
!
interface Loopback0
description Management Loopback (in default space)
ip address 172.31.1.2 255.255.255.255
!
interface GigabitEthernet0/0/0
description WAN Link to IPv4 Core
ip address 172.16.2.2 255.255.255.252
negotiation auto
!
interface GigabitEthernet0/0/1
vrf forwarding TRANS
ip address 10.1.2.1 255.255.255.0
negotiation auto
!
interface GigabitEthernet0/0/2
vrf forwarding SOC

```

```

ip address 10.2.2.1 255.255.255.0
negotiation auto
!
interface GigabitEthernet0/0/3
vrf forwarding FIN
ip address 10.3.2.1 255.255.255.0
negotiation auto
!
router lisp
eid-table default instance-id 0
  database-mapping 172.31.1.2/32 172.16.2.2 priority 1 weight 100
  ipv4 etr map-server 172.16.1.2 key DEFAULT-key
  ipv4 etr map-server 172.16.1.6 key DEFAULT-key
  exit
!
eid-table vrf TRANS instance-id 1
  database-mapping 10.1.2.0/24 172.16.2.2 priority 1 weight 100
  ipv4 etr map-server 172.16.1.2 key TRANS-key
  ipv4 etr map-server 172.16.1.6 key TRANS-key
  exit
!
eid-table vrf SOC instance-id 2
  database-mapping 10.2.2.0/24 172.16.2.2 priority 1 weight 100
  ipv4 etr map-server 172.16.1.2 key SOC-key
  ipv4 etr map-server 172.16.1.6 key SOC-key
  exit
!
eid-table vrf FIN instance-id 3
  database-mapping 10.3.2.0/24 172.16.2.2 priority 1 weight 100
  ipv4 etr map-server 172.16.1.2 key FIN-key
  ipv4 etr map-server 172.16.1.6 key FIN-key
  exit
!
ipv4 itr map-resolver 172.16.1.2
ipv4 itr map-resolver 172.16.1.6
ipv4 itr
ipv4 etr
exit
!
ip route 0.0.0.0 0.0.0.0 172.16.2.1

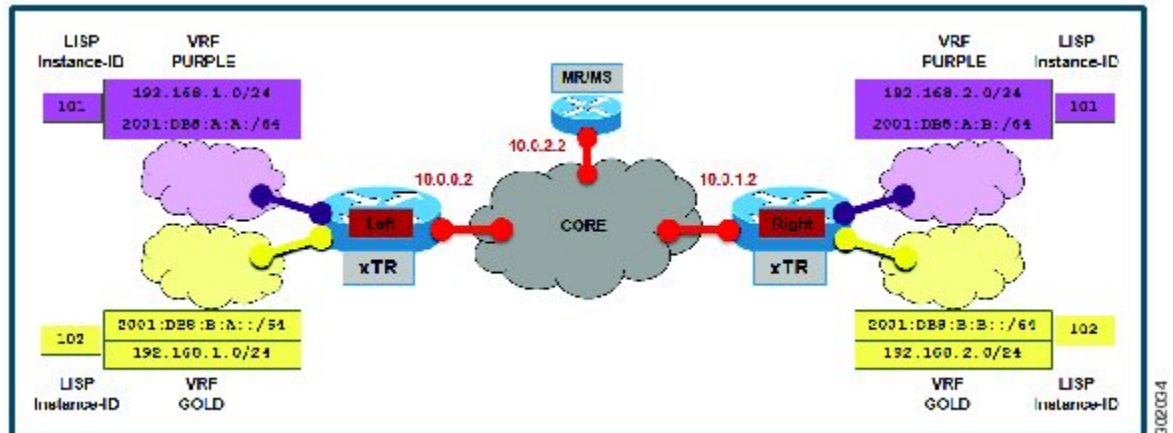
```

## Verifying and Troubleshooting LISP Virtualization

After configuring LISP, verifying and troubleshooting LISP configuration and operations may be performed by following the optional steps described below. Note that certain verification and troubleshooting steps may only apply to certain types of LISP devices.

In this task, the topology is shown in the figure below and the configuration is from the “Configure Simple LISP Shared Model Virtualization” task, but the commands are applicable to both LISP shared and parallel model virtualization.

Figure 11: Simple LISP Site with Virtualized IPv4 and IPv6 EIDs and a Shared IPv4 Core



#### Note

The following examples do not show every available command and every available output display. Refer to the *Cisco IOS LISP Command Reference* for detailed explanations of each command.

## SUMMARY STEPS

1. **enable**
2. **show running-config | section router lisp**
3. **show [ip | ipv6] lisp**
4. **show [ip | ipv6] lisp map-cache**
5. **show [ip | ipv6] lisp database [eid-table vrf vrf-name]**
6. **show lisp site [name site-name]**
7. **lig {[self {ipv4 | ipv6}] | {hostname | destination-EID}}**
8. **ping {hostname | destination-EID}**
9. **clear [ip | ipv6] lisp map-cache**

## DETAILED STEPS

### Step 1

#### enable

Enables privileged EXEC mode. Enter your password if prompted.

**Example:**

```
Router> enable
```

**Step 2** **show running-config | section router lisp**

The **show running-config | section router lisp** command is useful for quickly verifying the LISP configuration on the device. This command applies to any LISP device. The following is sample output from the **show running-config | section router lisp** command when a simple LISP site is configured with virtualized IPv4 and IPv6 EID prefixes and a shared IPv4 core:

**Example:**

```
Router# show running-config | section router lisp

router lisp
  eid-table vrf PURPLE instance-id 101
    database-mapping 192.168.1.0/24 10.0.0.2 priority 1 weight 1
    database-mapping 2001:DB8:A:A::/64 10.0.0.2 priority 1 weight 1
  eid-table vrf GOLD instance-id 102
    database-mapping 192.168.1.0/24 10.0.0.2 priority 1 weight 1
    database-mapping 2001:DB8:B:A::/64 10.0.0.2 priority 1 weight 1
  exit
!
  ipv4 itr map-resolver 10.0.2.2
  ipv4 itr
  ipv4 etr map-server 10.0.2.2 key Left-key
  ipv4 etr
  ipv6 itr map-resolver 10.0.2.2
  ipv6 itr
  ipv6 etr map-server 10.0.2.2 key Left-key
  ipv6 etr
  exit
```

**Step 3** **show [ip | ipv6] lisp**

The **show ip lisp** and **show ipv6 lisp** commands are useful for quickly verifying the operational status of LISP as configured on the device, as applicable to the IPv4 and IPv6 address families respectively. This command applies to any LISP device.

**Example:**

The first example shows a summary of LISP operational status and IPv6 address family information by EID table:

```
Router# show ipv6 lisp eid-table summary

Instance count: 2
Key: DB - Local EID Database entry count (@ - RLOC check pending
      * - RLOC consistency problem),
      DB no route - Local EID DB entries with no matching RIB route,
      Cache - Remote EID mapping cache size, IID - Instance ID,
      Role - Configured Role

EID VRF name      Interface      DB  DB no  Cache Incom  Cache
                  (.IID)    size route size plete  Idle Role
PURPLE            LISP0.101    1   0      1  0.0%  0.0% ITR-ETR
GOLD              LISP0.102    1   0      1  0.0%  0.0% ITR-ETR
```

**Example:**

The second example shows LISP operational status and IPv6 address family information for the VRF named PURPLE:

```
Router# show ipv6 lisp eid-table vrf PURPLE
```



```

Instance ID:                101
Router-lisp ID:             0
Locator table:              default
EID table:                  PURPLE
Ingress Tunnel Router (ITR): enabled
Egress Tunnel Router (ETR): enabled
Proxy-ITR Router (PITR):   disabled
Proxy-ETR Router (PETR):   disabled
Map Server (MS):           disabled
Map Resolver (MR):         disabled
Map-Request source:        2001:DB8:A:A::1
ITR Map-Resolver(s):       10.0.2.2
ETR Map-Server(s):         10.0.2.2 (00:00:24)
ITR use proxy ETR RLOC(s): none

```

**Example:**

The third example shows LISP operational status and IPv6 address family information for the instance ID of 101:

```

Router# show ipv6 lisp instance-id 101

Instance ID:                101
Ingress Tunnel Router (ITR): enabled
Egress Tunnel Router (ETR): enabled
Proxy-ITR Router (PITR):   disabled
Proxy-ETR Router (PETR):   disabled
Map Server (MS):           disabled
Map Resolver (MR):         disabled
Map-Request source:        2001:DB8:A:A::1
ITR Map-Resolver(s):       10.0.2.2
ETR Map-Server(s):         10.0.2.2 (00:00:11)
ITR Solicit Map Request (SMR): accept and process
  Max SMRs per map-cache entry: 8 more specifics
  Multiple SMR suppression time: 60 secs
ETR accept mapping data:   disabled, verify disabled
ETR map-cache TTL:         1d00h

```

**Step 4** `show [ip | ipv6] lisp map-cache`

The `show ip lisp map-cache` and `show ipv6 lisp map-cache` commands are useful for quickly verifying the operational status of the map cache on a device configured as an ITR or PITR, as applicable to the IPv4 and IPv6 address families respectively.

**Example:**

The following example shows IPv6 mapping cache information based on a configuration when a simple LISP site is configured with virtualized IPv4 and IPv6 EID prefixes and a shared IPv4 core. This example output assumes that a map-cache entry has been received for another site with the IPv6 EID prefix 2001:db8:b:b::/64.

```

Router# show ip lisp map-cache eid-table vrf GOLD

LISP IPv6 Mapping Cache for EID-table vrf GOLD (IID 102), 2 entries

::/0, uptime: 01:09:52, expires: never, via static send map-request
  Negative cache entry, action: send-map-request
2001:DB8:B:B::/64, uptime: 00:00:10, expires: 23:59:42, via map-reply, complete
Locator  Uptime  State  Pri/Wgt
10.0.1.2 00:00:10 up      1/1

```

**Step 5** `show [ip | ipv6] lisp database [eid-table vrf vrf-name]`

The `show ip lisp database` and `show ipv6 lisp database` commands are useful for quickly verifying the operational status of the database mapping on a device configured as an ETR, as applicable to the IPv4 and IPv6 address families respectively.

**Example:**

The following example shows IPv6 mapping database information for the VRF named GOLD.

```
Router# show ipv6 lisp database eid-table vrf GOLD
LISP ETR IPv6 Mapping Database for EID-table vrf GOLD (IID 102), LSBs: 0x1, 1 entries
EID-prefix: 2001:DB8:B:A::/64
  10.0.0.2, priority: 1, weight: 1, state: site-self, reachable
```

**Step 6****show lisp site [name site-name]**

The **show lisp site** command is useful for quickly verifying the operational status of LISP sites, as configured on a map server. This command only applies to a device configured as a map server. The following example output is based on a configuration when a simple LISP site is configured with virtualized IPv4 and IPv6 EID prefixes and shows the information for the instance ID of 101.

**Example:**

```
Router# show lisp site instance-id 101
LISP Site Registration Information

Site Name      Last      Up      Who Last      Inst      EID Prefix
Register      Registered
Left           00:00:36 yes    10.0.0.2     101       192.168.1.0/24
              00:00:43 yes    10.0.0.2     101       2001:DB8:A:A::/64
Right          00:00:31 yes    10.0.1.2     101       192.168.2.0/24
              00:00:02 yes    10.0.1.2     101       2001:DB8:A:B::/64
```

**Example:**

This second example shows LISP site information for the IPv6 EID prefix of 2001:db8:a:a/64 and instance ID of 101.

```
Router# show lisp site 2001:db8:a:a:/64 instance-id 101
LISP Site Registration Information

Site name: Left
Allowed configured locators: any
Requested EID-prefix:
EID-prefix: 2001:DB8:A:A::/64 instance-id 101
  First registered:      02:41:55
  Routing table tag:    0
  Origin:                Configuration
Registration errors:
  Authentication failures: 4
  Allowed locators mismatch: 0
ETR 10.0.0.2, last registered 00:00:22, no proxy-reply, no map-notify
  TTL 1d00h
  Locator  Local State  Pri/Wgt
  10.0.0.2 yes    up      1/1
```

**Step 7****lig {[self {ipv4 | ipv6}] | {hostname | destination-EID}}**

The LISP Internet Groper (**lig**) command is useful for testing the LISP control plane. The **lig** command can be used to query for the indicated destination hostname or EID, or the routers local EID-prefix. This command provides a simple means of testing whether a destination EID exists in the LISP mapping database system, or your site is registered with the mapping database system. This command is applicable for both the IPv4 and IPv6 address families and applies to any LISP device that maintains a map cache (for example, if configured as an ITR or PITR). The following example output is based on a configuration when a simple LISP site is configured with virtualized IPv4 and IPv6 EID prefixes and shows the information for the instance ID of 101 and the IPv4 EID prefix of 192.168.2.1.

**Example:**

```
Router# lig instance-id 101 192.168.2.1

Mapping information for EID 192.168.2.1 from 10.0.1.2 with RTT 12 msec
192.168.2.0/24, uptime: 00:00:00, expires: 23:59:52, via map-reply, complete
  Locator  Uptime    State      Pri/Wgt
  10.0.1.2 00:00:00  up         1/1
```

**Example:**

This second example output shows information about the VRF named PURPLE:

```
Router# lig eid-table vrf PURPLE self

Mapping information for EID 192.168.1.0 from 10.0.0.1 with RTT 20 msec
192.168.1.0/24, uptime: 00:00:00, expires: 23:59:52, via map-reply, self
  Locator  Uptime    State      Pri/Wgt
  10.0.0.1 00:00:00  up, self   1/1
```

**Step 8**

**ping** {hostname | destination-EID}

The **ping** command is useful for testing basic network connectivity and reachability and/or liveness of a destination EID or RLOC address. When using **ping** it is important to be aware that because LISP uses an encapsulation, you should always specify a source address; never allow the **ping** application to assign its own default source address. This is because there are four possible ways to use **ping**, and without explicitly indicating the source address, the wrong one may be used by the application leading to erroneous results that complicate operational verification or troubleshooting. The four possible uses of **ping** include:

- RLOC-to-RLOC—Sends “echo□?” packets out natively (no LISP encap) and receive the “echo-reply□?” back natively. This can be used to test the underlying network connectivity between locators of various devices, such as xTR to Map-Server or Map-Resolver.
- EID-to-EID—Sends “echo□?” packets out LISP-encaped and receive the “echo-reply□?” back LISP-encaped. This can be used to test the LISP data plane (encapsulation) between LISP sites.
- EID-to-RLOC—Sends “echo□?” packets out natively (no LISP encap) and receive the "echo-reply" back LISP-encaped through a PITR mechanism. This can be used to test the PITR infrastructure.
- RLOC-to-EID - Sends “echo□?” packets out LISP-encaped and receive the “echo-reply□?” back natively. This can be used to test PETR capabilities.

The **ping** command is applicable to the IPv4 and IPv6 address families respectively, and can be used on any LISP device in some manner. (The ability to do LISP encapsulation, for example, requires the device to be configured as an ITR or PITR.)

The following example output from the **ping** command is based on a configuration when a simple LISP site is configured with virtualized IPv4 and IPv6 EID prefixes. (Note that ping is not a LISP command and does not know about an EID table or an instance ID. When virtualization is included, output limiters can only be specified by VRF.)

**Example:**

```
Router# ping vrf PURPLE 2001:DB8:a:b::1 source 2001:DB8:a:a::1 rep 100

Type escape sequence to abort.
Sending 100, 100-byte ICMP Echos to 2001:DB8:A:B::1, timeout is 2 seconds:
Packet sent with a source address of 2001:DB8:A:A::1%PURPLE
!!!!!!!!!!!!!!!!!!!!!!!!!!!!!!!!!!!!!!!!!!!!!!!!!!!!!!!!!!!!!!!!!!!!!!!!!!!!
Success rate is 100 percent (100/100), round-trip min/avg/max = 0/0/1 ms
```

**Example:**

```

Router# ping vrf GOLD

Protocol [ip]: ipv6
Target IPv6 address: 2001:db8:b:b::1
Repeat count [5]:
Datagram size [100]:
Timeout in seconds [2]:
Extended commands? [no]: y
Source address or interface: 2001:db8:b:a::1
.
.
.
Type escape sequence to abort.
Sending 5, 100-byte ICMP Echos to 2001:DB8:B:B::1, timeout is 2 seconds:
Packet sent with a source address of 2001:DB8:B:A::1%GOLD
!!!!
Success rate is 100 percent (5/5), round-trip min/avg/max = 0/0/0 ms

```

**Step 9****clear [ip | ipv6] lisp map-cache**

The **clear ip lisp map-cache** and **clear ipv6 lisp map-cache** commands remove all IPv4 or IPv6 dynamic LISP map-cache entries stored by the router. This can be useful trying to quickly verify the operational status of the LISP control plane. This command applies to a LISP device that maintains a map cache (for example, if configured as an ITR or PITR).

**Example:**

The following example displays IPv4 mapping cache information for instance ID 101, shows the command used to clear the mapping cache for instance ID 101, and displays the show information after clearing the cache.

```

Router# show ip lisp map-cache instance-id 101

LISP IPv4 Mapping Cache for EID-table vrf PURPLE (IID 101), 2 entries

0.0.0.0/0, uptime: 00:25:17, expires: never, via static send map-request
  Negative cache entry, action: send-map-request
192.168.2.0/24, uptime: 00:20:13, expires: 23:39:39, via map-reply, complete
Locator  Uptime  State      Pri/Wgt
10.0.1.2  00:20:13  up        1/1

Router# clear ip lisp map-cache instance-id 101

Router# show ip lisp map-cache instance-id 101

LISP IPv4 Mapping Cache, 1 entries

0.0.0.0/0, uptime: 00:00:02, expires: never, via static send map-request
  Negative cache entry, action: send-map-request

```

## Configuration Examples for LISP Shared Model Virtualization

Complete configuration examples are available within each task under the “How to Configure LISP Shared Model Virtualization” section.

# Additional References

## Related Documents

Document Title	Location
Cisco IOS IP Routing: LISP Command Reference	<a href="http://www.cisco.com/en/US/docs/ios-xml/ios/iproute_lisp/command/ip-lisp-cr-book.html">http://www.cisco.com/en/US/docs/ios-xml/ios/iproute_lisp/command/ip-lisp-cr-book.html</a>
Enterprise IPv6 Transitions Strategy Using the Locator/ID Separation Protocol	<a href="#">Cisco LISP Software Image Download Page</a>
Cisco IOS LISP0 Virtual Interface, Application Note, Version 1.0	<a href="#">Cisco LISP Software Image Download Page</a>
Cross-Platform Release Notes for Cisco IOS Release 15.2M&T	<a href="http://www.cisco.com/en/US/docs/ios/15_2m_and_t/release/notes/15_2m_and_t.html">http://www.cisco.com/en/US/docs/ios/15_2m_and_t/release/notes/15_2m_and_t.html</a>

## Standards

Standard	Title
IANA Address Family Numbers	<a href="http://www.iana.org/assignments/address-family-numbers/address-family-numbers.xml">http://www.iana.org/assignments/address-family-numbers/address-family-numbers.xml</a>

## MIBs

MIB	MIBs Link
None	To locate and download MIBs for selected platforms, Cisco IOS software releases, and feature sets, use Cisco MIB Locator found at the following URL: <a href="http://www.cisco.com/go/mibs">http://www.cisco.com/go/mibs</a>

## RFCs

RFC	Title
draft-ietf-lisp-22	Locator/ID Separation Protocol (LISP) <a href="http://tools.ietf.org/html/draft-ietf-lisp-22">http://tools.ietf.org/html/draft-ietf-lisp-22</a>
draft-ietf-lisp-ms-16	LISP Map Server <a href="http://tools.ietf.org/html/draft-ietf-lisp-ms-16">http://tools.ietf.org/html/draft-ietf-lisp-ms-16</a>

RFC	Title
draft-ietf-lisp-alt-10	LISP Alternative Topology (LISP+ALT) <a href="http://tools.ietf.org/html/draft-ietf-lisp-alt-10">http://tools.ietf.org/html/draft-ietf-lisp-alt-10</a>
draft-ietf-lisp-LCAF-06	LISP Canonical Address Format (LCAF) <a href="http://tools.ietf.org/wg/lisp/">http://tools.ietf.org/wg/lisp/</a>
draft-ietf-lisp-interworking-06	Interworking LISP with IPv4 and IPv6 <a href="http://tools.ietf.org/html/draft-ietf-lisp-interworking-06">http://tools.ietf.org/html/draft-ietf-lisp-interworking-06</a>
draft-ietf-lisp-lig-06	LISP Internet Groper (LIG) <a href="http://tools.ietf.org/html/draft-ietf-lisp-lig-06">http://tools.ietf.org/html/draft-ietf-lisp-lig-06</a>
draft-ietf-lisp-mib-03	LISP MIB <a href="http://tools.ietf.org/wg/lisp/draft-ietf-lisp-mib/">http://tools.ietf.org/wg/lisp/draft-ietf-lisp-mib/</a>

#### Technical Assistance

Description	Link
The Cisco Support and Documentation website provides online resources to download documentation, software, and tools. Use these resources to install and configure the software and to troubleshoot and resolve technical issues with Cisco products and technologies. Access to most tools on the Cisco Support and Documentation website requires a Cisco.com user ID and password.	<a href="http://www.cisco.com/cisco/web/support/index.html">http://www.cisco.com/cisco/web/support/index.html</a>

## Feature Information for LISP Shared Model Virtualization

The following table provides release information about the feature or features described in this module. This table lists only the software release that introduced support for a given feature in a given software release train. Unless noted otherwise, subsequent releases of that software release train also support that feature.

Use Cisco Feature Navigator to find information about platform support and Cisco software image support. To access Cisco Feature Navigator, go to [www.cisco.com/go/cfn](http://www.cisco.com/go/cfn). An account on Cisco.com is not required.

**Table 1: Feature Information for LISP Shared Model Virtualization**

<b>Feature Name</b>	<b>Releases</b>	<b>Feature Information</b>
LISP Shared Model Virtualization	15.2(2)T 15.1(1)SY1	LISP Shared Model Virtualization feature uses Endpoint Identifier (EID) spaces that are created by binding VRFs associated with an EID space to Instance IDs. A common, “shared” locator space is used by all virtualized EIDs.

