



Deploying in VMware ESX

- [Prerequisites and Guidelines](#), on page 1
- [Deploying Nexus Dashboard Using VMware vCenter](#), on page 5
- [Deploying Nexus Dashboard Directly in VMware ESXi](#), on page 14

Prerequisites and Guidelines

Before you proceed with deploying the Nexus Dashboard cluster in VMware ESX, you must:

- Ensure that the ESX form factor supports your scale and services requirements.

Scale and services support and co-hosting vary based on the cluster form factor and the specific services you plan to deploy. You can use the [Nexus Dashboard Capacity Planning](#) tool to verify that the virtual form factor satisfies your deployment requirements.



Note Some services (such as Nexus Dashboard Fabric Controller) may require only a single ESX virtual node for one or more specific use cases. In that case, the capacity planning tool will indicate the requirement and you can simply skip the additional node deployment step in the following section.

- Review and complete the general prerequisites described in [Deployment Overview and Requirements](#).
Note that this document describes how to initially deploy the base Nexus Dashboard cluster. If you want to expand an existing cluster with additional nodes (such as `worker` or `standby`), see the "Infrastructure Management" chapter of the *Cisco Nexus Dashboard User Guide* instead, which is available from the Nexus Dashboard UI or online at [Cisco Nexus Dashboard User Guide](#)
- Review and complete any additional prerequisites described in the *Release Notes* for the services you plan to deploy.
- When deploying in VMware ESX, you can deploy two types of nodes:
 - Data Node—node profile designed for data-intensive applications, such as Nexus Dashboard Insights
 - App Node—node profile designed for non-data-intensive applications, such as Nexus Dashboard Orchestrator



Note If you plan to add worker nodes to your cluster:

- For NDFC, both the initial cluster and worker nodes can be App nodes.

Detailed scale information is available in the [Verified Scalability Guide for Cisco Nexus Dashboard Fabric Controller](#) for your release.

- For all other services or co-hosting scenarios, the initial cluster must be deployed using Data nodes.

Ensure you have enough system resources:

Table 1: Deployment Requirements

Nexus Dashboard Version	Data Node Requirements	App Node Requirements
Release 2.3.x		<ul style="list-style-type: none"> • VMware ESXi 7.0, 7.0.1, 7.0.2, 7.0.3 • VMware vCenter 7.0.1, 7.0.2 if deploying using vCenter • Each VM requires the following: <ul style="list-style-type: none"> • 16 vCPUs with physical reservation of at least 2.2GHz • 64GB of RAM with physical reservation • 500GB HDD or SSD storage for the data volume and an additional 50GB for the system volume <p>Some services require <small>App</small> nodes to be deployed on faster SSD storage while other services support HDD. Check the Nexus Dashboard Capacity Planning tool to ensure that you use the correct type of storage.</p> • We recommend that each Nexus Dashboard node is deployed in a different ESXi server.

Nexus Dashboard Version	Data Node Requirements	App Node Requirements
	<ul style="list-style-type: none"> • VMware ESXi 7.0, 7.0.1, 7.0.2, 7.0.3 • VMware vCenter 7.0.1, 7.0.2 if deploying using vCenter • Each VM requires the following: <ul style="list-style-type: none"> • 32 vCPUs with physical reservation of at least 2.2GHz • 128GB of RAM with physical reservation • 3TB SSD storage for the data volume and an additional 50GB for the system volume <p>Data nodes must be deployed on storage with the following minimum performance requirements:</p> <ul style="list-style-type: none"> • The SSD must be attached to the data store directly or in JBOD mode if using a RAID Host Bus Adapter (HBA) • The SSDs must be optimized for Mixed Use/Application (not Read-Optimized) • 4K Random Read IOPS: 93000 • 4K Random Write IOPS: 31000 • We recommend that each Nexus Dashboard node is deployed in a different ESXi server. 	

- After each node's VM is deployed, ensure that the VMware Tools' periodic time synchronization is disabled as described in the deployment procedure in the next section.
- VMware vMotion is not supported for Nexus Dashboard cluster nodes.
- VMware Distributed Resource Scheduler (DRS) is not supported for Nexus Dashboard cluster nodes.
- Because Nexus Dashboard is a platform infrastructure, it is not possible to bring down all services. In other words, if you want to take a snapshot of the virtual machine (such as for debugging purposes), the snapshot must have all Nexus Dashboard services running.
- You can choose to deploy the nodes directly in ESXi or using vCenter.

If you want to deploy using vCenter, following the steps described in [Deploying Nexus Dashboard Using VMware vCenter, on page 5](#).

If you want to deploy directly in ESXi, following the steps described in [Deploying Nexus Dashboard Directly in VMware ESXi, on page 14](#).

Deploying Nexus Dashboard Using VMware vCenter

This section describes how to deploy Cisco Nexus Dashboard cluster using VMware vCenter. If you prefer to deploy directly in ESXi, follow the steps described in [Deploying Nexus Dashboard Directly in VMware ESXi, on page 14](#) instead.

Before you begin

- Ensure that you meet the requirements and guidelines described in [Prerequisites and Guidelines, on page 1](#).

Step 1 Obtain the Cisco Nexus Dashboard OVA image.

a) Browse to the Software Download page.

<https://software.cisco.com/download/home/286327743/type/286328258/>

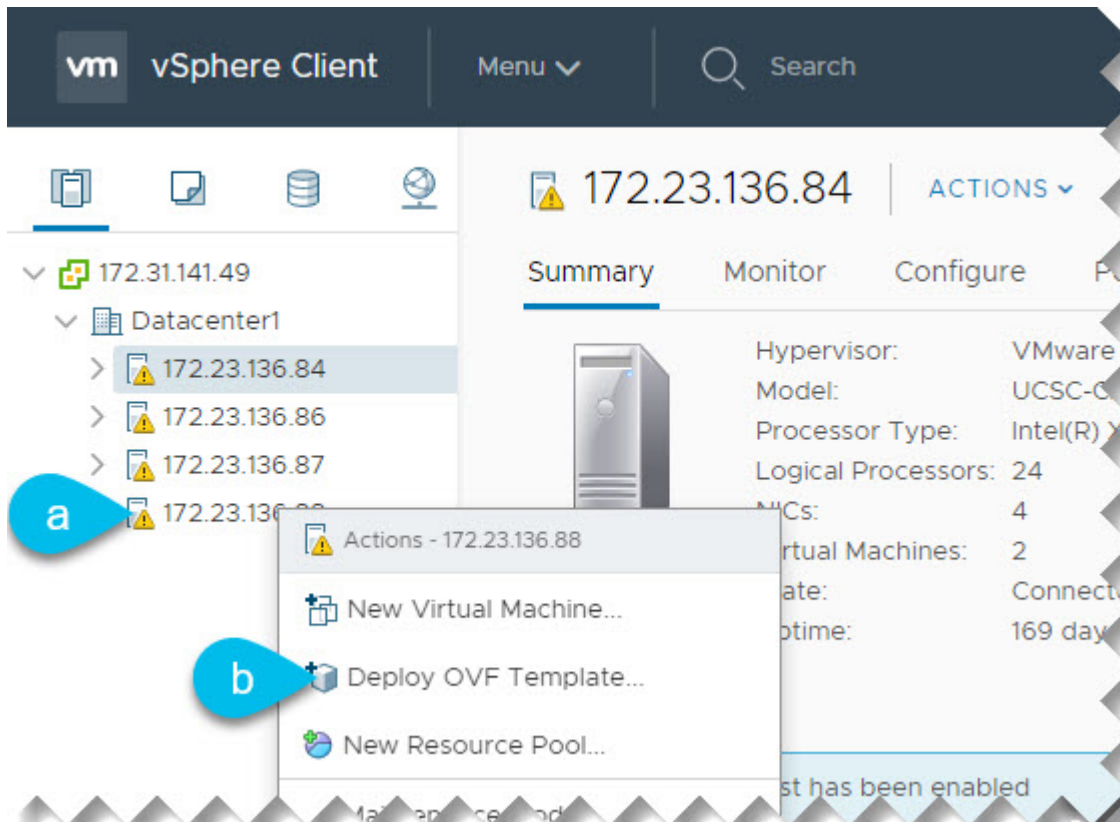
b) Choose the Nexus Dashboard release version you want to download.

c) Click the **Download** icon next to the Nexus Dashboard OVA image (`nd-dk9.<version>.ova`).

Step 2 Log in to your VMware vCenter.

Depending on the version of your vSphere client, the location and order of configuration screens may differ slightly. The following steps provide deployment details using VMware vSphere Client 6.7.

Step 3 Start the new VM deployment.

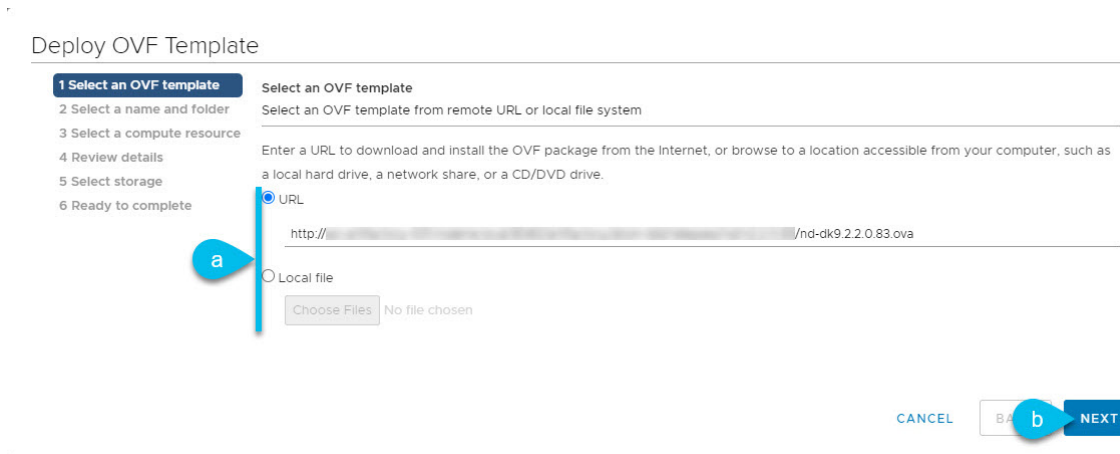


- a) Right-click the ESX host where you want to deploy.
- b) Then select **Deploy OVF Template...**

The **Deploy OVF Template** wizard appears.

Step 4

In the **Select an OVF template** screen, provide the OVA image.



- a) Provide the image.

If you hosted the image on a web server in your environment, select **URL** and provide the URL to the image as shown in the above screenshot.

If your image is local, select **Local file** and click **Choose Files** to select the OVA file you downloaded.

b) Click **Next** to continue.

Step 5

In the **Select a name and folder** screen, provide a name and location for the VM.

Deploy OVF Template

1 Select an OVF template
 2 Select a name and folder
 3 Select a compute resource
 4 Review details
 5 Select storage
 6 Ready to complete

Select a name and folder
Specify a unique name and target location

Virtual machine name:

Select a location for the virtual machine.

- 172.31.141.49
- Datacenter1**

CANCEL

a) Provide the name for the virtual machine.

b) Select the location for the virtual machine.

c) Click **Next** to continue

Step 6

In the **Select a compute resource** screen, select the ESX host.

Deploy OVF Template

1 Select an OVF template
 2 Select a name and folder
 3 Select a compute resource
 4 Review details
 5 Select storage
 6 Ready to complete

Select a compute resource
Select the destination compute resource for this operation

- Datacenter1
 - 172.23.136.84
 - 172.23.136.86
 - 172.23.136.87
 - 172.23.136.88**

Compatibility

✓ Compatibility checks succeeded.

CANCEL

a) Select the vCenter data center and the ESX host for the virtual machine.

b) Click **Next** to continue

Step 7

In the **Review details** screen, click **Next** to continue.

Step 8

In the **Configuration** screen, select the node profile you want to deploy.

Deploy OVF Template

1 Select an OVF template
 2 Select a name and folder
 3 Select a compute resource
 4 Review details
 5 Configuration
 6 Select storage
 7 Select networks
 8 Customize template
 9 Ready to complete

Configuration
Select a deployment configuration

App
 Data

Description
Use this deployment profile to configure an App OVA with 16vCPUs, 64GB RAM, and 500GB Disk.

2 Items

CANCEL **BA** **NEXT**

a) Select either **App** or **Data** node profile based on your use case requirements.

For more information about the node profiles, see [Prerequisites and Guidelines](#), on page 1.

b) Click **Next** to continue

Step 9

In the **Select storage** screen, provide the storage information.

Deploy OVF Template

1 Select an OVF template
 2 Select a name and folder
 3 Select a compute resource
 4 Review details
 5 Configuration
 6 Select storage
 7 Select networks
 8 Customize template
 9 Ready to complete

Select storage
Select the storage for the configuration and disk files

Encrypt this virtual machine (Requires Key Management Server)

Select virtual disk format:
 Thick Provision Lazy Zeroed

VM Storage Policy:

Name	Capacity	Provisioned	Free	Type	Cluster
datastore1 (3)	925.25 GB	225.74 GB	707.7 GB	VMFS 5	

Compatibility
 Compatibility checks succeeded.

CANCEL **BA** **NEXT**

a) From the **Select virtual disk format** drop-down, select **Thick Provision Lazy Zeroed**.

b) Select the datastore for the virtual machine.

We recommend a unique datastore for each node.

c) Click **Next** to continue

Step 10

In the **Select networks** screen, choose the VM network for the Nexus Dashboard's Management and Data networks and click **Next** to continue.

There are two networks required by the Nexus Dashboard cluster:

- **fabric0** is used for the Nexus Dashboard cluster's Data Network
- **mgmt0** is used for the Nexus Dashboard cluster's Management Network.

For more information about these networks, see [Prerequisites and Guidelines](#) in the "Deployment Overview and Requirements" chapter.

Step 11 In the **Customize template** screen, provide the required information.

Deploy OVF Template

✓ 1 Select an OVF template
 ✓ 2 Select a name and folder
 ✓ 3 Select a compute resource
 ✓ 4 Review details
 ✓ 5 Configuration
 ✓ 6 Select storage
 ✓ 7 Select networks
 8 **Customize template**
 9 Ready to complete

Customize template
 Customize the deployment properties of this software solution.

✓ All properties have valid values

Configuration Group	Number of Settings
Resource Configuration	1 settings
1. Data Disk Size (GB)	Data disk size (min 500GB, max 1536GB (1.5TB)) 500
Node Configuration	3 settings
1. Password	Local "rescue-user" password Password: Confirm Password:
2. Management Network Address and subnet	Management network address. Enter IP/subnet 172.31.140.46/24
3. Management Gateway IP	Management network gateway IP address. Enter IP only 172.31.140.

CANCEL BACK NEXT

a) Provide the size for the node's data volume.

We recommend using the default values for the required data volume.

The default values will be pre-populated based on the type of node you are deploying, with App node having a single 500GB disk and Data node having a single 3TB disk.

Note that in addition to the data volume, a second 50GB system volume will also be configured but cannot be customized.

b) Provide and confirm the **Password**.

This password is used for the `rescue-user` account on each node.

Note You must provide the same password for all nodes or the cluster creation will fail.

c) Provide the **Management Network** IP address and netmask.

d) Provide the **Management Network** IP gateway.

e) Click **Next** to continue.

Step 12 In the **Ready to complete** screen, verify that all information is accurate and click **Finish** to begin deploying the first node.

Step 13 Repeat previous steps to deploy the second and third nodes.

Note If you are deploying a single-node cluster, you can skip this step.

You do not need to wait for the first node's VM deployment to complete, you can begin deploying the other two nodes simultaneously. The steps to deploy the second and third nodes are identical to the first node's.

Step 14 Wait for the VM(s) to finish deploying.

Step 15 Ensure that the VMware Tools periodic time synchronization is disabled, then start the VMs.

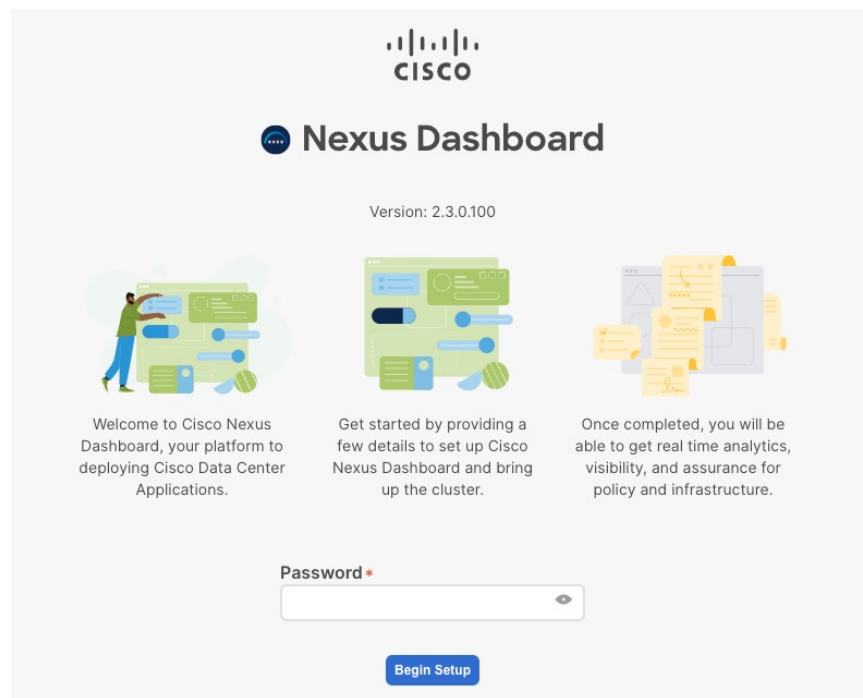
To disable time synchronization:

- Right-click the node's VM and select **Edit Settings**.
- In the **Edit Settings** window, select the **VM Options** tab.
- Expand the **VMware Tools** category and uncheck the **Synchronize guest time with host** option.

Step 16 Open your browser and navigate to `https://<node-mgmt-ip>` to open the GUI.

The rest of the configuration workflow takes place from one of the node's GUI. You can choose any one of the nodes you deployed to begin the bootstrap process and you do not need to log in to or configure the other two nodes directly.

Enter the password you provided in a previous step and click **Begin Setup**



Step 17 Provide the **Cluster Details**.

In the **Cluster Details** screen of the initial setup wizard, provide the following information:

- Provide the **Cluster Name** for this Nexus Dashboard cluster.
- Click **+Add NTP Host** to add one or more NTP servers.

You must provide an IP address, fully qualified domain name (FQDN) are not supported.

After you enter the IP address, click the green checkmark icon to save it.

- Click **+Add DNS Provider** to add one or more DNS servers.

After you enter the IP address, click the green checkmark icon to save it.

- Provide a **Proxy Server**.

For clusters that do not have direct connectivity to Cisco cloud, we recommend configuring a proxy server to establish the connectivity, which will allow you to mitigate risk from exposure to non-conformant hardware and software in your fabrics.

If you want to skip proxy configuration, click the information (i) icon next to the field, then click **Skip**.

- e) (Optional) If your proxy server required authentication, change **Authentication required for Proxy** to `Yes` and provide the login credentials.
- f) (Optional) Expand the **Advanced Settings** category and change the settings if required.

Under advanced settings, you can configure the following:

- Provide one or more search domains by clicking **+Add DNS Search Domain**.

After you enter the IP address, click the green checkmark icon to save it.

- Provide custom **App Network** and **Service Network**.

The application overlay network defines the address space used by the application's services running in the Nexus Dashboard. The field is pre-populated with the default `172.17.0.1/16` value.

The services network is an internal network used by the Nexus Dashboard and its processes. The field is pre-populated with the default `100.80.0.0/16` value.

Application and Services networks are described in the [Prerequisites and Guidelines](#) section earlier in this document.

- g) Click **Next** to continue.

Step 18

In the **Node Details** screen, provide the node's information.

- a) Click the **Edit** button next to the first node.
- b) In the **Password** field, enter the password for this node and click **Validate**.

This will auto-populate the **Serial Number** and **Management Network** information for the node.

- c) Provide the node's **Name**.
- d) Provide the node's **Data Network** information.

The **Management Network** information is already pre-populated with the information you provided for the first node.

You must provide the data network IP address/netmask (for example, `172.31.140.58/24`) and gateway (for example, `172.31.140.1`). Optionally, you can also provide the VLAN ID for the network. For most deployments, you can leave the VLAN ID field blank.

- e) (Optional) Provide IPv6 addresses for the management and data networks.

Nexus Dashboard supports either IPv4 or dual stack IPv4/IPv6 for the management and data networks.

Note If you want to provide IPv6 information, you must do that now during cluster bootstrap process. If you deploy the cluster using only IPv4 stack and want to add IPv6 information later, you would need to redeploy the cluster.

All nodes in the cluster must be configured with either only IPv4 or dual IPv4/IPv6 stack.

- f) (Optional) If required, **Enable BGP** for the data network.

BGP configuration is required for the Persistent IPs feature required by some services, such as Nexus Dashboard Insights with NDFC fabrics. This feature is described in detail in the "Persistent IP Addresses" sections of the *Nexus Dashboard User's Guide*.

Note You can enable BGP at this time or in the Nexus Dashboard GUI after the cluster is deployed.

When you enable BGP, you must also provide the following information:

- **ASN** (BGP Autonomous System Number) of this node.
You can configure the same ASN for all nodes or a different ASN per node.
- **BGP Peer Details**, which includes the peer's IPv4 or IPv6 address and peer's ASN.

g) Click **Save** to save the changes.

Step 19

In the **Node Details** screen, click **Add Node** to add the second node to the cluster.

Note If you are deploying a single-node cluster, you can skip this step and proceed with Step 21.

The **Node Details** window opens.

a) In the **Deployment Details** section, provide the node's **Management IP Address** and **Password** for the `rescue-user` you configured when deploying the node's VM, then click **Verify**.

This will auto-populate the **Serial Number** and **Management Network** information for the node.

- b) Provide the node's **Name**.
c) Provide the node's **Data Network** IP address and gateway.

The **Management Network** information will be pre-populated with the information pulled from the node based on the management IP address and credentials you provided in the previous sub-step.

You must provide the data network IP address/netmask (for example, `172.31.141.58/24`) and gateway (for example, `172.31.141.1`). Optionally, you can also provide the VLAN ID for the network. For most deployments, you can leave the VLAN ID field blank.

d) (Optional) Provide IPv6 information for the management and data networks.

Nexus Dashboard supports either IPv4 or dual stack IPv4/IPv6 for the management and data networks.

Note If you want to provide IPv6 information, you must do it during cluster bootstrap process. If you deploy the cluster using only IPv4 stack and want to add IPv6 information later, you would need to redeploy the cluster.

All nodes in the cluster must be configured with either only IPv4 or dual IPv4/IPv6 stack.

e) (Optional) If required, **Enable BGP** for the data network.

f) Click **Save** to save the changes.

Step 20

Repeat the previous step to add the 3rd node.

Note If you are deploying a single-node cluster, you can skip this step and proceed with Step 21.

Step 21

In the **Node Details** screen, click **Next** to continue.

After you've provided the information for all 3 nodes in the cluster, continue to the next screen of the bootstrap process.

Node Details

Provide the necessary node details to set up Nexus Dashboard and bring up the User Interface.

General

Serial Number	Name	Management Network	Data Network		
EA986C528737	node-ova-app1	IPv4/mask: 172.31.140.46/24 IPv4 Gateway: 172.31.140.1 IPv6/mask: - IPv6 Gateway: -	IPv4/mask: 172.31.141.58/24 IPv4 Gateway: 172.31.141.1 IPv6/mask: - IPv6 Gateway: - VLAN: -	/	🗑️
B734BC2033AD	node-ova-app2	IPv4/mask: 172.31.140.60/24 IPv4 Gateway: 172.31.140.1 IPv6/mask: - IPv6 Gateway: -	IPv4/mask: 172.31.141.68/24 IPv4 Gateway: 172.31.141.1 IPv6/mask: - IPv6 Gateway: - VLAN: -	/	🗑️
AED5046A16E2	node-ova-app3	IPv4/mask: 172.31.140.70/24 IPv4 Gateway: 172.31.140.1 IPv6/mask: - IPv6 Gateway: -	IPv4/mask: 172.31.141.72/24 IPv4 Gateway: 172.31.141.1 IPv6/mask: - IPv6 Gateway: - VLAN: -	/	🗑️

Previous Next

Step 22 In the **Confirmation** screen, review and verify the configuration information and click **Configure** to create the cluster.

During the node bootstrap and cluster bring-up, the overall progress as well as each node's individual progress will be displayed in the UI. If you do not see the bootstrap progress advance, manually refresh the page in your browser to update the status.

It may take up to 30 minutes for the cluster to form and all the services to start. When cluster configuration is complete, the page will reload to the Nexus Dashboard GUI.

Step 23 Verify that the cluster is healthy.

It may take up to 30 minutes for the cluster to form and all the services to start.

After all three nodes are ready, you can log in to any one node via SSH and run the following command to verify cluster health:

a) Verify that the cluster is up and running.

You can check the current status of cluster deployment by logging in to any of the nodes and running the `acs health` command.

While the cluster is converging, you may see the following outputs:

```
$ acs health
k8s install is in-progress
```

```
$ acs health
k8s services not in desired state - [...]
```

```
$ acs health
k8s: Etcd cluster is not ready
```

When the cluster is up and running, the following output will be displayed:

```
$ acs health
All components are healthy
```

- b) Log in to the Nexus Dashboard GUI.

After the cluster becomes available, you can access it by browsing to any one of your nodes' management IP addresses. The default password for the `admin` user is the same as the `rescue-user` password you chose for the first node of the Nexus Dashboard cluster.

Step 24 Configure the **Network Scale** parameters for your cluster.

This is described in the **Infrastructure Management > Cluster Configuration** section of the *Cisco Nexus Dashboard User Guide*, which is also available directly from your Nexus Dashboard's Help Center.

Deploying Nexus Dashboard Directly in VMware ESXi

This section describes how to deploy Cisco Nexus Dashboard cluster directly in VMware ESXi. If you prefer to deploy using vCenter, follow the steps described in [Deploying Nexus Dashboard Directly in VMware ESXi, on page 14](#) instead.

Before you begin

- Ensure that you meet the requirements and guidelines described in [Prerequisites and Guidelines, on page 1](#).

Step 1 Obtain the Cisco Nexus Dashboard OVA image.

- a) Browse to the Software Download page.

<https://software.cisco.com/download/home/286327743/type/286328258/>

- b) Choose the Nexus Dashboard release version you want to download.
c) Click the **Download** icon next to the Nexus Dashboard OVA image (`nd-dk9.<version>.ova`).

Step 2 Log in to your VMware ESXi.

Depending on the version of your ESXi server, the location and order of configuration screens may differ slightly. The following steps provide deployment details using VMware ESXi 6.7.

Step 3 Right-click the host and select **Create/Register VM**.

Step 4 In the **Select creation type** screen, choose `Deploy a virtual machine from an OVF or OVA file`, then click **Next**.

Step 5 In the **Select OVF and VMDK files** screen, provide the virtual machine name (for example, `nd-node1`) and the OVA image you downloaded in the first step, then click **Next**.

Step 6 In the **Select storage** screen, choose the datastore for the VM, then click **Next**.

Step 7 In the **Select OVF and VMDK files** screen, provide the virtual machine name (for example, `nd-node1`) and the OVA image you downloaded in the first step, then click **Next**.

Step 8 In the **Deployment options** screen, choose `Disk Provisioning: Thick`, uncheck the `Power on automatically` option, then click **Next** to continue.

There are two networks, **fabric0** is used for the data network and **mgmt0** is used for the management network.

Step 9 In the **Ready to complete** screen, verify that all information is accurate and click **Finish** to begin deploying the first node.

Step 10 Repeat previous steps to deploy the second and third nodes.

Note If you are deploying a single-node cluster, you can skip this step.

You do not need to wait for the first node deployment to complete, you can begin deploying the other two nodes simultaneously.

Step 11 Wait for the VM(s) to finish deploying.

Step 12 Ensure that the VMware Tools periodic time synchronization is disabled, then start the VMs.

To disable time synchronization:

- a) Right-click the node's VM and select **Edit Settings**.
- b) In the **Edit Settings** window, select the **VM Options** tab.
- c) Expand the **VMware Tools** category and uncheck the **Synchronize guest time with host** option.

Step 13 Open one of the node's console and configure the node's basic information.

- a) Begin initial setup.

You will be prompted to run the first-time setup utility:

```
[ OK ] Started atomix-boot-setup.
      Starting Initial cloud-init job (pre-networking)...
      Starting logrotate...
      Starting logwatch...
      Starting keyhole...
[ OK ] Started keyhole.
[ OK ] Started logrotate.
[ OK ] Started logwatch.
```

Press any key to run first-boot setup on this console...

- b) Enter and confirm the `admin` password

This password will be used for the `rescue-user` SSH login as well as the initial GUI password.

Note You must provide the same password for all nodes or the cluster creation will fail.

```
Admin Password:
Reenter Admin Password:
```

- c) Enter the management network information.

```
Management Network:
  IP Address/Mask: 192.168.9.172/24
  Gateway: 192.168.9.1
```

- d) For the first node only, designate it as the "Cluster Leader".

You will log into the cluster leader node to finish configuration and complete cluster creation.

```
Is this the cluster leader?: y
```

- e) Review and confirm the entered information.

You will be asked if you want to change the entered information. If all the fields are correct, choose `n` to proceed. If you want to change any of the entered information, enter `y` to re-start the basic configuration script.

```

Please review the config
Management network:
  Gateway: 192.168.9.1
  IP Address/Mask: 192.168.9.172/24
Cluster leader: no

Re-enter config? (y/N): n

```

Step 14 Repeat previous step to configure the initial information for the second and third nodes.

You do not need to wait for the first node configuration to complete, you can begin configuring the other two nodes simultaneously.

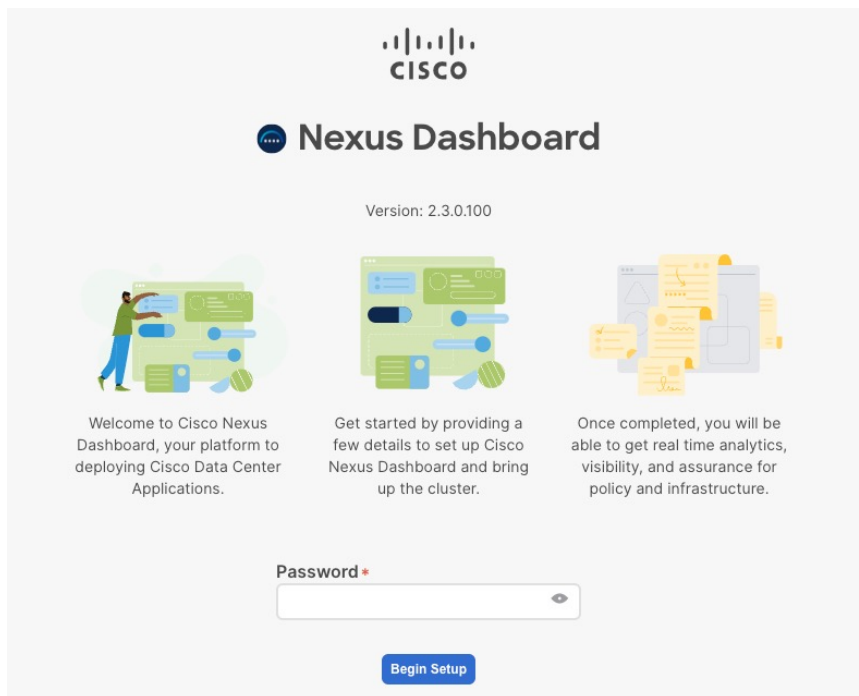
Note You must provide the same password for all nodes or the cluster creation will fail.

The steps to deploy the second and third nodes are identical with the only exception being that you must indicate that they are not the **Cluster Leader**.

Step 15 Open your browser and navigate to `https://<node-mgmt-ip>` to open the GUI.

The rest of the configuration workflow takes place from one of the node's GUI. You can choose any one of the nodes you deployed to begin the bootstrap process and you do not need to log in to or configure the other two nodes directly.

Enter the password you provided in a previous step and click **Begin Setup**



Step 16 Provide the **Cluster Details**.

In the **Cluster Details** screen of the initial setup wizard, provide the following information:

- Provide the **Cluster Name** for this Nexus Dashboard cluster.
- Click **+Add NTP Host** to add one or more NTP servers.

You must provide an IP address, fully qualified domain name (FQDN) are not supported.

After you enter the IP address, click the green checkmark icon to save it.

- c) Click **+Add DNS Provider** to add one or more DNS servers.

After you enter the IP address, click the green checkmark icon to save it.

- d) Provide a **Proxy Server**.

For clusters that do not have direct connectivity to Cisco cloud, we recommend configuring a proxy server to establish the connectivity, which will allow you to mitigate risk from exposure to non-conformant hardware and software in your fabrics.

If you want to skip proxy configuration, click the information (i) icon next to the field, then click **Skip**.

- e) (Optional) If your proxy server required authentication, change **Authentication required for Proxy** to **Yes** and provide the login credentials.
- f) (Optional) Expand the **Advanced Settings** category and change the settings if required.

Under advanced settings, you can configure the following:

- Provide one or more search domains by clicking **+Add DNS Search Domain**.

After you enter the IP address, click the green checkmark icon to save it.

- Provide custom **App Network** and **Service Network**.

The application overlay network defines the address space used by the application's services running in the Nexus Dashboard. The field is pre-populated with the default `172.17.0.1/16` value.

The services network is an internal network used by the Nexus Dashboard and its processes. The field is pre-populated with the default `100.80.0.0/16` value.

Application and Services networks are described in the [Prerequisites and Guidelines](#) section earlier in this document.

- g) Click **Next** to continue.

Step 17

In the **Node Details** screen, provide the node's information.

- a) Click the **Edit** button next to the first node.
- b) In the **Password** field, enter the password for this node and click **Validate**.

This will auto-populate the **Serial Number** and **Management Network** information for the node.

- c) Provide the node's **Name**.
- d) Provide the node's **Data Network** information.

The **Management Network** information is already pre-populated with the information you provided for the first node.

You must provide the data network IP address/netmask (for example, `172.31.140.58/24`) and gateway (for example, `172.31.140.1`). Optionally, you can also provide the VLAN ID for the network. For most deployments, you can leave the VLAN ID field blank.

- e) (Optional) Provide IPv6 addresses for the management and data networks.

Nexus Dashboard supports either IPv4 or dual stack IPv4/IPv6 for the management and data networks.

Note If you want to provide IPv6 information, you must do that now during cluster bootstrap process. If you deploy the cluster using only IPv4 stack and want to add IPv6 information later, you would need to redeploy the cluster.

All nodes in the cluster must be configured with either only IPv4 or dual IPv4/IPv6 stack.

- f) (Optional) If required, **Enable BGP** for the data network.

BGP configuration is required for the Persistent IPs feature required by some services, such as Nexus Dashboard Insights with NDFC fabrics. This feature is described in detail in the "Persistent IP Addresses" sections of the *Nexus Dashboard User's Guide*.

Note You can enable BGP at this time or in the Nexus Dashboard GUI after the cluster is deployed.

When you enable BGP, you must also provide the following information:

- **ASN** (BGP Autonomous System Number) of this node.
You can configure the same ASN for all nodes or a different ASN per node.
- **BGP Peer Details**, which includes the peer's IPv4 or IPv6 address and peer's ASN.

- g) Click **Save** to save the changes.

Step 18

In the **Node Details** screen, click **Add Node** to add the second node to the cluster.

Note If you are deploying a single-node cluster, you can skip this step.

The **Node Details** window opens.

- a) In the **Deployment Details** section, provide the node's **Management IP Address** and **Password** for the `rescue-user` you configured when deploying the node's VM, then click **Verify**.

This will auto-populate the **Serial Number** and **Management Network** information for the node.

- b) Provide the node's **Name**.
c) Provide the node's **Data Network** IP address and gateway.

The **Management Network** information will be pre-populated with the information pulled from the node based on the management IP address and credentials you provided in the previous sub-step.

You must provide the data network IP address/netmask (for example, `172.31.141.58/24`) and gateway (for example, `172.31.141.1`). Optionally, you can also provide the VLAN ID for the network. For most deployments, you can leave the VLAN ID field blank.

- d) (Optional) Provide IPv6 information for the management and data networks.

Nexus Dashboard supports either IPv4 or dual stack IPv4/IPv6 for the management and data networks.

Note If you want to provide IPv6 information, you must do it during cluster bootstrap process. If you deploy the cluster using only IPv4 stack and want to add IPv6 information later, you would need to redeploy the cluster.

All nodes in the cluster must be configured with either only IPv4 or dual IPv4/IPv6 stack.

- e) (Optional) If required, **Enable BGP** for the data network.
f) Click **Save** to save the changes.

Step 19

Repeat the previous step to add the 3rd node.

Note If you are deploying a single-node cluster, you can skip this step.

Step 20

In the **Node Details** screen, click **Next** to continue.

After you've provided the information for all 3 nodes in the cluster, continue to the next screen of the bootstrap process.

Node Details

Provide the necessary node details to set up Nexus Dashboard and bring up the User Interface.

The diagram shows three sites connected to a central Data Network (L2/L3). Each site has a Fabric 0/1 interface connected to the Data Network and a Mgmt 0/1 interface connected to a Management Network (MN).

General

Serial Number	Name	Management Network	Data Network	
EA986C528737	node-ova-app1	IPv4/mask: 172.31.140.46/24 IPv4 Gateway: 172.31.140.1 IPv6/mask: - IPv6 Gateway: -	IPv4/mask: 172.31.141.58/24 IPv4 Gateway: 172.31.141.1 IPv6/mask: - IPv6 Gateway: - VLAN: -	
B734BC2033AD	node-ova-app2	IPv4/mask: 172.31.140.60/24 IPv4 Gateway: 172.31.140.1 IPv6/mask: - IPv6 Gateway: -	IPv4/mask: 172.31.141.68/24 IPv4 Gateway: 172.31.141.1 IPv6/mask: - IPv6 Gateway: - VLAN: -	
AED5046A16E2	node-ova-app3	IPv4/mask: 172.31.140.70/24 IPv4 Gateway: 172.31.140.1 IPv6/mask: - IPv6 Gateway: -	IPv4/mask: 172.31.141.72/24 IPv4 Gateway: 172.31.141.1 IPv6/mask: - IPv6 Gateway: - VLAN: -	

Previous Next

Step 21 In the **Confirmation** screen, review and verify the configuration information and click **Configure** to create the cluster.

During the node bootstrap and cluster bring-up, the overall progress as well as each node's individual progress will be displayed in the UI. If you do not see the bootstrap progress advance, manually refresh the page in your browser to update the status.

It may take up to 30 minutes for the cluster to form and all the services to start. When cluster configuration is complete, the page will reload to the Nexus Dashboard GUI.

Step 22 Verify that the cluster is healthy.

It may take up to 30 minutes for the cluster to form and all the services to start.

After all three nodes are ready, you can log in to any one node via SSH and run the following command to verify cluster health:

a) Verify that the cluster is up and running.

You can check the current status of cluster deployment by logging in to any of the nodes and running the `acs health` command.

While the cluster is converging, you may see the following outputs:

```
$ acs health
k8s install is in-progress
```

```
$ acs health
k8s services not in desired state - [...]
```

```
$ acs health
k8s: Etcd cluster is not ready
```

When the cluster is up and running, the following output will be displayed:

```
$ acs health  
All components are healthy
```

- b) Log in to the Nexus Dashboard GUI.

After the cluster becomes available, you can access it by browsing to any one of your nodes' management IP addresses. The default password for the `admin` user is the same as the `rescue-user` password you chose for the first node of the Nexus Dashboard cluster.

Note There may be an issue during the bootstrap process on 3-node vND (ESX) clusters which can cause the 'acs health' command to show the following error: 'k8s: services not in desired state - aaamgr,cisco-intersightdc,eventmonitoring,infra-kafka,kafka,mongodb,sm,statscollect'

Contact Cisco TAC and open a case referring to open Bug ID [CSCwf65557](#) requesting `root` access to run the workaround command on each node.

Step 23 Configure the **Network Scale** parameters for your cluster.

This is described in the **Infrastructure Management > Cluster Configuration** section of the [Cisco Nexus Dashboard User Guide](#), which is also available directly from your Nexus Dashboard's Help Center.
