



Cisco Crosswork Planning 7.0 Installation Guide

First Published: 2024-08-30

Americas Headquarters

Cisco Systems, Inc.
170 West Tasman Drive
San Jose, CA 95134-1706
USA
<http://www.cisco.com>
Tel: 408 526-4000
800 553-NETS (6387)
Fax: 408 527-0883

THE SPECIFICATIONS AND INFORMATION REGARDING THE PRODUCTS IN THIS MANUAL ARE SUBJECT TO CHANGE WITHOUT NOTICE. ALL STATEMENTS, INFORMATION, AND RECOMMENDATIONS IN THIS MANUAL ARE BELIEVED TO BE ACCURATE BUT ARE PRESENTED WITHOUT WARRANTY OF ANY KIND, EXPRESS OR IMPLIED. USERS MUST TAKE FULL RESPONSIBILITY FOR THEIR APPLICATION OF ANY PRODUCTS.

THE SOFTWARE LICENSE AND LIMITED WARRANTY FOR THE ACCOMPANYING PRODUCT ARE SET FORTH IN THE INFORMATION PACKET THAT SHIPPED WITH THE PRODUCT AND ARE INCORPORATED HEREIN BY THIS REFERENCE. IF YOU ARE UNABLE TO LOCATE THE SOFTWARE LICENSE OR LIMITED WARRANTY, CONTACT YOUR CISCO REPRESENTATIVE FOR A COPY.

The Cisco implementation of TCP header compression is an adaptation of a program developed by the University of California, Berkeley (UCB) as part of UCB's public domain version of the UNIX operating system. All rights reserved. Copyright © 1981, Regents of the University of California.

NOTWITHSTANDING ANY OTHER WARRANTY HEREIN, ALL DOCUMENT FILES AND SOFTWARE OF THESE SUPPLIERS ARE PROVIDED "AS IS" WITH ALL FAULTS. CISCO AND THE ABOVE-NAMED SUPPLIERS DISCLAIM ALL WARRANTIES, EXPRESSED OR IMPLIED, INCLUDING, WITHOUT LIMITATION, THOSE OF MERCHANTABILITY, FITNESS FOR A PARTICULAR PURPOSE AND NON-INFRINGEMENT OR ARISING FROM A COURSE OF DEALING, USAGE, OR TRADE PRACTICE.

IN NO EVENT SHALL CISCO OR ITS SUPPLIERS BE LIABLE FOR ANY INDIRECT, SPECIAL, CONSEQUENTIAL, OR INCIDENTAL DAMAGES, INCLUDING, WITHOUT LIMITATION, LOST PROFITS OR LOSS OR DAMAGE TO DATA ARISING OUT OF THE USE OR INABILITY TO USE THIS MANUAL, EVEN IF CISCO OR ITS SUPPLIERS HAVE BEEN ADVISED OF THE POSSIBILITY OF SUCH DAMAGES.

Any Internet Protocol (IP) addresses and phone numbers used in this document are not intended to be actual addresses and phone numbers. Any examples, command display output, network topology diagrams, and other figures included in the document are shown for illustrative purposes only. Any use of actual IP addresses or phone numbers in illustrative content is unintentional and coincidental.

All printed copies and duplicate soft copies of this document are considered uncontrolled. See the current online version for the latest version.

Cisco has more than 200 offices worldwide. Addresses and phone numbers are listed on the Cisco website at www.cisco.com/go/offices.

Cisco and the Cisco logo are trademarks or registered trademarks of Cisco and/or its affiliates in the U.S. and other countries. To view a list of Cisco trademarks, go to this URL: <https://www.cisco.com/c/en/us/about/legal/trademarks.html>. Third-party trademarks mentioned are the property of their respective owners. The use of the word partner does not imply a partnership relationship between Cisco and any other company. (1721R)

© 2024 Cisco Systems, Inc. All rights reserved.



CONTENTS

CHAPTER 1	Overview	1
	Audience	1
	Introducing Cisco Crosswork Planning	1
	Cisco Crosswork Planning Applications	2

CHAPTER 2	Installation Requirements	3
	Profile Specifications	3
	VMware Settings	4
	Cisco Crosswork Planning VM Requirements	5
	IOS XR Version Support	6
	Supported Web Browsers	7
	Port Requirements	7

CHAPTER 3	Install Cisco Crosswork Planning	11
	Installation Overview	11
	Installation Parameters	12
	Install Cisco Crosswork Planning Using the vCenter vSphere UI	16
	Install Cisco Crosswork Planning via the OVF Tool	22
	Install Cisco Crosswork Planning Using the Docker Installer Tool	25
	Sample Manifest Template	28
	Migrate Collector Configurations	30
	Migrate Collector Configuration from Cisco WAE	30
	Migrate Collector Configuration between Cisco Crosswork Planning Instances	32

CHAPTER 4	Next Steps	35
	Log in to Cisco Crosswork Planning UI	35

Install Smart License 36

Network Model Creation 36

CHAPTER 5

Uninstall Cisco Crosswork Planning 39

Delete the VM using the vSphere UI 39

Uninstall Cisco Crosswork Planning Applications 39



CHAPTER 1

Overview

This guide explains the requirements and processes to install Cisco Crosswork Planning. For detailed information on how to use the Cisco Crosswork Planning Design and Cisco Crosswork Planning Collector applications, see the *Cisco Crosswork Planning Design 7.0 User Guide* and *Cisco Crosswork Planning 7.0 Collection Setup and Administration*.

This section contains the following topics:

- [Audience](#) , on page 1
- [Introducing Cisco Crosswork Planning](#) , on page 1
- [Cisco Crosswork Planning Applications](#), on page 2

Audience

This guide is for experienced network users and operators who want to install Cisco Crosswork Planning in their network. This guide assumes that you are familiar with the following:

- Using a Docker container
- Running scripts in Python
- Deploying OVF templates using VMware vCenter
- Deploying using OVF tool

Introducing Cisco Crosswork Planning

Cisco Crosswork Planning runs on the Cisco Crosswork infrastructure and is part of the Cisco Crosswork Network Automation suite of products.

Cisco Crosswork Planning provides tools to create and maintain a model of the current network through the continual monitoring and analysis of the network, and the traffic demands that are placed on it. At a given time, this network model contains all relevant information about a network, including topology, configuration, and traffic information. You can use this information as a basis for analyzing the impact on the network due to changes in traffic demands, paths, node and link failures, network optimizations, or other changes.

Some of the important features of Cisco Crosswork Planning are:

- Traffic engineering and network optimization—Compute TE LSP configuration to meet service level requirements, perform capacity management, and perform local or global optimization to maximize efficiency of deployed network resources.
- Demand engineering—Examine the impact on network traffic flow of adding, removing, or modifying traffic demands on the network.
- Topology and predictive analysis—Observe the impact to network performance of changes in the network topology, which is driven either by design or by network failures.
- TE tunnel programming—Examine the impact of modifying tunnel parameters, such as the tunnel path and reserved bandwidth.
- Class of service (CoS)-aware bandwidth on demand—Examine existing network traffic and demands, and admit a set of service-class-specific demands between routers.

Cisco Crosswork Planning Applications

Cisco Crosswork Planning comprises the following two components. These components run independently of each other and you can enable/disable them based on your requirements.

- **Cisco Crosswork Planning Collector**

Cisco Crosswork Planning Collector consists of a set of services that create, maintain, and archive a model of the current network through continual monitoring and analysis of the network and the traffic demands that are placed on it. For more information on this application, see *Cisco Crosswork Planning 7.0 Collection Setup and Administration*.

- **Cisco Crosswork Planning Design**

Cisco Crosswork Planning Design is a network design and planning tool that helps network engineers and operators predict growth in their network, simulate failures, and optimize design to meet performance objectives while minimizing cost. For more information on this application, see *Cisco Crosswork Planning Design 7.0 User Guide*.



CHAPTER 2

Installation Requirements

This section contains the following topics:

- [Profile Specifications, on page 3](#)
- [VMware Settings, on page 4](#)
- [Cisco Crosswork Planning VM Requirements, on page 5](#)
- [IOS XR Version Support, on page 6](#)
- [Supported Web Browsers, on page 7](#)
- [Port Requirements, on page 7](#)

Profile Specifications

This table provides an overview of the scale support for various features and the hardware specifications for each profile in Cisco Crosswork Planning.

Table 1: Profile Specifications

Parameters	Profile 1	Profile 2	Profile 3
Scale Support			
Total number of network devices	1000	3000	6000
Total number of interfaces	10000	25000	50000
Total number of demands	50000	100000	500000
Total number of policies (SR and RSVP)	2000	5000	10000
Total number of VPNs	4	4	8
	Endpoints per VPN service: 30	Endpoints per VPN service: 60	Endpoints per VPN service: 60
Hardware Requirements			
Number of VMs	1	2	2

Parameters	Profile 1	Profile 2	Profile 3
CPU	16 vCPU	16 vCPU	24 vCPU
Memory	128 GB	128 GB	256 GB
Disk space	1 TB	1 TB	2 TB



Note There is no provision to tune the resource usage settings for individual services.

VMware Settings

If your vCenter data center does not meet these requirements, the Virtual Machine (VMs) has to be deployed individually. For more information on manual installation, see [Install Cisco Crosswork Planning Using the vCenter vSphere UI, on page 16](#).

- Hypervisor and vCenter supported:
 - VMware vCenter Server 8.0 (U2c or later) and ESXi 8.0 (U2b or later)
 - VMware vCenter Server 7.0 (U3p or later) and ESXi 7.0 (U3p or later)
- The machine where you run the installer must have high speed network connectivity to the vCenter data center where you plan to install Cisco Crosswork Planning.
- Cisco Crosswork Planning VM must be hosted on hardware with Hyper Threading disabled.
- Ensure that profile-driven storage is enabled by the vCenter admin user. Query permissions for the vCenter user at the root level (for all resources) of the vCenter.
- The networks required for the Crosswork Management and Data networks need to be built and configured in the data centers, and must allow low latency L2 communication (latency with RTT <= 10 ms).
- Ensure the user account you use for accessing vCenter has the following privileges:
 - VM (Provisioning): Clone VM on the VM you are cloning.
 - VM (Provisioning): Customize on the VM or VM folder if you are customizing the guest operating system.
 - VM (Inventory): Create from the existing VM on the data center or VM folder.
 - VM (Configuration): Add new disk on the data center or VM folder.
 - Resource: Assign a VM to resource pool on the destination host or resource pool.
 - Datastore: Allocate space on the destination datastore or datastore folder.
 - Network: Assign the network to which the VM will be assigned.
 - Profile-driven storage (Query): This permission setting needs to be allowed at the root of the data center tree level.

- We also recommend you to enable vCenter storage control.

Cisco Crosswork Planning VM Requirements

This section explains the resource requirements per VM to deploy Cisco Crosswork Planning.

Table 2: Network Requirements

Requirement	Description
Network Connections	<p>For production deployments, we recommend that you use dual interfaces, one for the Management network and one for the Data network.</p> <p>For optimal performance, the Management and Data networks should use links configured at a minimum of 10 Gbps with a latency of less than 10 milliseconds.</p>
IP Addresses	<p>Four IPv4 or IPv6 addresses: A management and data IP address for the Cisco Crosswork Planning node being deployed and two additional IP addresses to be used as the Virtual IP (VIP) address (one for the Management network and one for the Data network).</p> <p>Note</p> <ul style="list-style-type: none"> • Cisco Crosswork Planning does not support dual-stack configurations. Therefore, all addresses for the environment must be either IPv4 or IPv6. • The IP addresses must be able to reach the gateway address for the network, or the installation will fail. • When deploying with IPv6, the installation needs to run on an IPv6 enabled container/VM. • At this time, your IP allocation is permanent and cannot be changed without re-deployment. For more information, contact the Cisco Customer Experience team.
Interfaces	<p>Cisco Crosswork Planning is deployed on a single VM with two interfaces.</p> <ul style="list-style-type: none"> • No. of NICs: 2 • vNIC0: Management Traffic (for accessing the interactive console and passing the Control/Data information between servers). • vNIC1: Device Access Traffic (for device access and data collection).
NTP Server	<p>The IPv4 or IPv6 addresses or host names of the NTP server you plan to use. If you want to enter multiple NTP servers, separate them with spaces. These should be the same NTP servers you use to synchronize the Cisco Crosswork Planning VM clock, devices, clients, and servers across your network.</p> <p>Ensure that the NTP servers are reachable on the network before attempting installation. The installation will fail if the servers cannot be reached.</p>

Requirement	Description
DNS Servers	<p>The IPv4 or IPv6 addresses of the DNS servers you plan to use. These should be the same DNS servers you use to resolve host names across your network.</p> <p>Ensure that the DNS servers are reachable on the network before attempting installation. The installation will fail if the servers cannot be reached.</p>
DNS Search Domain	<p>The search domain you want to use with the DNS servers, for example, cisco.com. You can have only one search domain.</p>
Backup Server	<p>Cisco Crosswork Planning will back up the configuration of the system to an external server using SCP. The SCP server storage requirements will vary slightly but you must have at least 25 GB of storage.</p>
FQDN (Optional)	<p>The installation process supports using either a VIP (Virtual IP address) or an FQDN (Fully Qualified Domain Name) to access the VM.</p> <p>If you choose to use the FQDN, you will need one for the Management and one for the Data network.</p> <p>Cisco Crosswork Planning deployed on a single VM does not support dual-stack configurations. Therefore, all FQDN addresses configured for the deployment environment must be either IPv4 or IPv6.</p> <p>Note If you choose to supply the FQDNs during the initial installation, the DNS server must be populated with them before the VM is powered on; otherwise, the installation script will fail to complete the environment setup.</p>

IOS XR Version Support

Cisco Crosswork Planning supports the following Cisco IOS XR software versions.

Table 3: IOS XR Version Support

Device	Tested with version
SR-PCE	7.7.2, 7.11.2, 24.1.2, 24.2.1
XRv 9000	7.7.2, 7.11.2, 24.1.2, 24.2.1
ASR 9000	7.7.2, 7.11.2, 24.1.2, 24.2.1
NCS 5500	7.7.2, 7.11.2, 24.1.2, 24.2.1
NCS 540	7.7.2, 7.11.2, 24.1.2, 24.2.1
Cisco 8000 series routers	7.7.2, 7.11.2, 24.1.2, 24.2.1

Supported Web Browsers

The following table lists the supported browser versions for Cisco Crosswork Planning:

Browser	Version
Google Chrome	127 or later
Mozilla Firefox	128 or later

Port Requirements

The following TCP/UDP port numbers need to be allowed through any external firewall or access-list rules deployed by the data center administrator.

Table 4: Internal Ports Used by Cisco Crosswork Planning Deployment

Port	Protocol	Used for
111	TCP/UDP	GlusterFS (port mapper)
279	TCP	Calico BGP (Kubernetes)
500	UDP	IPSec
2379/2380	TCP	Kubernetes etcd
4500	UDP	IPSec
6443	TCP	kube-apiserver (Kubernetes)
9100	TCP	Kubernetes metamonitoring
10250	TCP	kubelet (Kubernetes)
24007	TCP	GlusterFS
30606	TCP	Docker Registry
30742	TCP	WAE Modeling Daemon (WMD)
30744	TCP	OPM/RPC
31210	UDP	NetFlow packets
49152:49370	TCP	GlusterFS

Table 5: Ports Used by Cisco Crosswork Planning Deployment on the Management Network

Port	Protocol	Used for	Direction
30602	TCP	Monitoring the installation (Cisco Crosswork Planning)	Inbound
30603	TCP	Cisco Crosswork Planning Web user interface (NGINX server listens for secure connections on port 443)	Inbound
7	TCP/UDP	Discovering endpoints using ICMP	Outbound
22	TCP	Initiating SSH connections with managed devices	Outbound
22	TCP	Remote SSH connection	Inbound
53	TCP/UDP	Connecting to DNS	Outbound
123	UDP	Network Time Protocol (NTP)	Outbound
830	TCP	Initiating NETCONF	Outbound

Table 6: Ports Used by Cisco Crosswork Planning Deployment on the Device Network

Port	Protocol	Used for	Direction
31062 Accepted range of ports is 30160–31560	UDP	SNMP Collector	Outbound
30621	TCP	FTP (available on data interface only). The additional ports used for file transfer are 31121 (TCP), 31122 (TCP), and 31123 (TCP). This port is available only when the supported application is installed on Cisco Crosswork and the FTP settings are enabled.	Inbound

Port	Protocol	Used for	Direction
30622	TCP	SFTP (available on data interface only) This port is available only when the supported application is installed on Cisco Crosswork and the SFTP settings are enabled.	Inbound



CHAPTER 3

Install Cisco Crosswork Planning

This chapter explains the processes to install Cisco Crosswork Planning on a single VM or node. In a single VM-based solution, the Cisco Crosswork Platform Infrastructure, Cisco Crosswork Planning infrastructure, and Cisco Crosswork Planning Design and Cisco Crosswork Planning Collector applications are bundled together in a single OVA image. Once you complete the installation procedure, all these components are installed on your machine by default.

- The Cisco Crosswork Platform Infrastructure is a microservices-based platform and is the foundation required for running Crosswork applications.
- Cisco Crosswork Planning Collector provides a set of microservices to create, maintain, and archive a model of the current network.
- Cisco Crosswork Planning Design provides a set of microservices for network planning, designing, and visualization.
- Cisco Crosswork Planning Infrastructure provides a set of microservices to manage Smart Licensing and Archive services.

This section contains the following topics:

- [Installation Overview, on page 11](#)
- [Installation Parameters, on page 12](#)
- [Install Cisco Crosswork Planning Using the vCenter vSphere UI, on page 16](#)
- [Install Cisco Crosswork Planning via the OVF Tool, on page 22](#)
- [Install Cisco Crosswork Planning Using the Docker Installer Tool, on page 25](#)
- [Migrate Collector Configurations, on page 30](#)

Installation Overview

Cisco Crosswork Planning can be installed via:

- vCenter vSphere UI—For details, see [Install Cisco Crosswork Planning Using the vCenter vSphere UI, on page 16](#).
- OVF tool—For details, see [Install Cisco Crosswork Planning via the OVF Tool, on page 22](#).
- Docker installer tool—For details, see [Install Cisco Crosswork Planning Using the Docker Installer Tool, on page 25](#).



Note This method is less recommended compared to using the vCenter UI or the OVF tool for installation.

Installation Parameters

This section explains the important parameters that must be specified while installing Cisco Crosswork Planning. Ensure that you have relevant information to provide for each of the parameters mentioned in the table.



Attention Use the latest template file that comes with the Cisco Crosswork Planning build file.

Table 7: General Parameters

Parameter Name	Description
Cw_VM_Image	The name of Crosswork VM image in vCenter. This value is set as an option when running the installer tool and does not need to be set in the template file.
ClusterIPStack	The IP stack protocol: IPv4 or IPv6
vm_sizes	Create a custom profile as per your requirement. The following two profiles are supported in Cisco Crosswork Planning: <pre>vm_sizes = { "Small" = { vcpus = 16, cpu_reservation = 24000, memory = 128000 }, "Large" = { vcpus = 24, cpu_reservation = 32000, memory = 256000 } }</pre>
vcpus	The number of virtual CPU instances allocated for virtual machine.
cpu_reservation	The guaranteed minimum CPU resource allocation for virtual machine.
memory	The amount of memory allocation for virtual machine.
ManagementVIP	The Management Virtual IP for the Crosswork VM.

Parameter Name	Description
ManagementVIPName	Name of the Management Virtual IP for the Crosswork VM. This is an optional parameter used to reach Crosswork Management VIP via DNS name. If this parameter is used, the corresponding DNS record must exist in the DNS server.
ManagementIPNetmask	The Management IP subnet in dotted decimal format (IPv4 or IPv6).
ManagementIPGateway	The Gateway IP on the Management Network (IPv4 or IPv6). The address must be reachable, otherwise the installation will fail.
DataVIP	The Data Virtual IP for the Crosswork VM.
DataVIPName	Name of the Data Virtual IP for the Crosswork VM. This is an optional parameter used to reach Crosswork Data VIP via DNS name. If this parameter is used, the corresponding DNS record must exist in the DNS server.
DataIPNetmask	The Data IP subnet in dotted decimal format (IPv4 or IPv6).
DataIPGateway	The Gateway IP on the Data Network (IPv4 or IPv6). The address must be reachable, otherwise the installation will fail.
DNS	The IP address of the DNS server (IPv4 or IPv6). The address must be reachable, otherwise the installation will fail.
DomainName	The domain name used for the VM.
K8sServiceNetwork	The network address for the kubernetes service network. By default, the CIDR range is fixed to '/16'.
K8sPodNetwork	The network address for the kubernetes pod network. By default, the CIDR range is fixed to '/16'.
CWPassword	<p>Password to log into Cisco Crosswork.</p> <p>Use a strong VM Password (8 characters long, including upper & lower case letters, numbers, and at least one special character). Avoid using passwords similar to dictionary words (for example, "Pa55w0rd!") or relatable words (for example, C!sco123 or Cwork321!). While they satisfy the criteria, such passwords are weak and will be rejected resulting in failure to setup the VM.</p>
VMSize	VM size. You can choose <code>Small</code> or <code>Large</code> in accordance with the desired profile.
NTP	NTP server address or name. The address must be reachable, otherwise the installation will fail.

Parameter Name	Description
SchemaVersion	<p>The configuration Manifest schema version. This indicates the version of the installer to use with this template.</p> <p>Schema version should map to the version packaged with the sample template in the installer tool on cisco.com. You should always build a new template from the default template provided with the release you are deploying, as template requirements may change from one release to the next.</p>
ManagerDataFsSize	<p>Refers to the data disk size for the Crosswork node (in GB). This is an optional parameter and the default value is 450 (valid range is from 450 to 8000), if not explicitly specified.</p> <p>Please use the default value unless recommended otherwise.</p>
ThinProvisioned	Set to "false" for production deployments.
LogFsSize	<p>Log partition size (in Giga Bytes). Minimum value is 20 GB and Maximum value is 1000 GB.</p> <p>If left blank, the default value (20 GB) is selected.</p>
BackupMinPercent	<p>Minimum percentage of the data disk space to be used for the size of the backup partition. The default value is 50 (valid range is from 1 to 80).</p> <p>Please use the default value unless recommended otherwise.</p> <p>Note The final backup partition size will be calculated dynamically. This parameter defines the minimum.</p>
EnableHardReservations	<p>Determines the enforcement of VM CPU and Memory profile reservations. This is an optional parameter and the default value is <code>true</code>, if not explicitly specified.</p> <p>If set as <code>true</code>, the VM's resources are provided exclusively. In this state, the installation will fail if there are insufficient CPU cores, memory or CPU cycles.</p> <p>If set as <code>false</code> (only set for lab installations), the VM's resources are provided on best efforts. In this state, insufficient CPU cores can impact performance or cause installation failure.</p>
RamDiskSize	<p>Size of the RAM disk.</p> <p>This parameter is only used for lab installations (value must be at least 2). When a non-zero value is provided for <code>RamDiskSize</code>, the <code>HSDatastore</code> value is not used.</p>
EnableSkipAutoInstallFeature	<p>It is mandatory for this to be set to "True" for successful installation. This ensures that unnecessary Infrastructure services for Cisco Crosswork Planning are not installed automatically, which could lead to resource allocation problems.</p> <p>If left blank, the default value ("False") is selected.</p>

Parameter Name	Description
EnforcePodReservations	Enforces minimum resource reservations for the pod. If left blank, the default value ("True") is selected.
Timezone	Enter the timezone. Input is a standard IANA time zone (for example, "America/Chicago"). If left blank, the default value (UTC) is selected. This is an optional parameter.
DefaultApplicationResourceProfile	The default application resource profile. This can be left blank ("").
DefaultInfraResourceProfile	Resource profile for infra pods. If left blank, resource profile defaults to the deployment's VM profile (recommended option).
IgnoreDiagnosticsCheckFailure	Set to "true".

Table 8: VM Parameters

Parameter Name	Description
VMName	Name of the VM
NodeType	Indicates the type of VM. Choose "Hybrid".
ManagementIPAddress	The Management IP address of the VM (IPv4 or IPv6).
DataIPAddress	The Data IP address of the VM (IPv4 or IPv6).

Table 9: VMware Template Parameters

Parameter Name	Description
VCenterAddress	The vCenter IP or host name.
VCenterUser	The username needed to log into vCenter.
VCenterPassword	The password needed to log into vCenter.
DCname	The name of the Data Center resource to use. Example: DCname = "cp"
MgmtNetworkName	The name of the vCenter network to attach to the VM's Management interface. This network must already exist in VMware or the installation will fail.
DataNetworkName	The name of the vCenter network to attach to the VM's Data interface. This network must already exist in VMware or the installation will fail. However, if this is a single NIC installation using only the Management interface, then you need to specify DataNetworkName = "".

Parameter Name	Description
HostedCwVMs	The ID of the VM to be hosted by the ESXi host or resource.
Host	<p>The ESXi host, or ONLY the vCenter VM/resource group name where the VM is to be deployed.</p> <p>The primary option is to use the host IP or name (all the hosts should be under the data center). If the hosts are under a VM in the data center, only provide the VM name (all hosts within the VM will be picked up).</p> <p>The subsequent option is to use a resource group. In this case, a full path should be provided.</p> <p>Example: Host = "Main infrastructure/Resources/00_trial"</p>
Datastore	<p>The datastore name available to be used by this host or resource group.</p> <p>The primary option is to use host IP or name. The subsequent option is to use a resource group.</p> <p>Example: Datastore = "SDRS-DCNSOL-prodexsi/bru-netapp-01_FC_Prodesx_ds_15"</p>
HSDatastore	<p>The high speed datastore available for this host or resource group.</p> <p>If the vCenter server has a separate high-speed datastore, then this should be set to the name of that high-speed data store. If the vCenter server uses only a high-speed datastore, then both Datastore and HSDatastore can be set to the same name.</p> <p>Note: The use of high-speed datastore is mandatory for Cisco Crosswork Planning.</p>

Install Cisco Crosswork Planning Using the vCenter vSphere UI

This topic explains how to deploy Cisco Crosswork Planning on a single VM using the vCenter user interface.

This is the recommended method for installing Cisco Crosswork Planning on a single VM.

Procedure

-
- Step 1** Download the latest available Cisco Crosswork Planning image file (*.ova) to your system.
- Step 2** With VMware ESXi running, log in to the VMware vSphere Web Client. On the left navigation pane, choose the ESXi host where you want to deploy the VM.
- Step 3** In the vSphere UI, go to **Host > Configure > Networking > Virtual Switches** and select the virtual switch for the Management Network that will be used to access the UI of the VM. In the virtual switch, select **Edit > Security**, and configure the following DVS port group properties:
- Set **Promiscuous mode** as *Reject*

- Set **MAC address changes** as *Reject*

Confirm the settings and repeat the process for the virtual switch that will be used for the Data Network.

Step 4

Review and confirm that your network settings meet the requirements.

Ensure that the networks that you plan to use for Management network and Data network are connected to the host. Contact your Cisco Experience team for assistance.

Step 5

Choose **Actions > Deploy OVF Template**.

Caution The default VMware vCenter deployment timeout is 15 minutes. If vCenter times out during deployment, the resulting VM will not be bootable. To prevent this, we recommend that you document the choices (such as IP address, gateway, DNS server, etc.) so that you can enter the information quickly and avoid any issues with the VMware configuration.

Step 6

The VMware **Deploy OVF Template** window appears, with the first step, **1 - Select an OVF template**, highlighted. Click **Choose Files** to navigate to the location where you downloaded the OVA image file and select it. Once selected, the file name is displayed in the window.

Step 7

Click **Next**. The **Deploy OVF Template** window is refreshed, with **2 - Select a name and folder** now highlighted. Enter a name and select the respective data center for the Cisco Crosswork Planning VM you are creating.

We recommend that you include the Cisco Crosswork Planning version and build number in the name, for example: Cisco Crosswork Planning 7.0 Build 152.

Step 8

Click **Next**. The **Deploy OVF Template** window is refreshed, with **3 - Select a compute resource** highlighted. Select the host for your Cisco Crosswork Planning VM.

Step 9

Click **Next**. The VMware vCenter Server validates the OVA. Network speed will determine how long validation takes. After the validation is complete, the **Deploy OVF Template** window is refreshed, with **4 - Review details** highlighted.

Step 10

Review the OVF template that you are deploying. Note that this information is gathered from the OVF, and cannot be modified.

Note Even though the **Product** field displays as "Cisco Crosswork Network Automation", once the installation procedure completes, the product name is displayed as "Cisco Crosswork Planning" in the application UI. The term "Cisco Crosswork Network Automation" is used universally for all the products under Crosswork portfolio.

Note You may see alerts regarding the OVF package containing advanced configuration options and/or about trusted certificates. These are common and you can safely select the "Ignore" option.

Step 11

Click **Next**. The **Deploy OVF Template** window is refreshed, with **5 - License agreements** highlighted. Review the End User License Agreement and if you agree, click the **I accept all license agreements** checkbox. Otherwise, contact your Cisco Experience team for assistance.

Step 12

Click **Next**. The **Deploy OVF Template** window is refreshed, with **6 - Configuration** highlighted. Choose the desired deployment configuration.

Important For single VM deployment, the supported configurations are **IPv4 Network** and **IPv6 Network** using two NICs.

Figure 1: Select a deployment configuration

6. Configuration

Select a deployment configuration

<input checked="" type="radio"/> IPv4 Network	Description Use IPv4 network stack for management and data traffic.
<input type="radio"/> IPv6 Network	
<input type="radio"/> Dual Stack Network	
<input type="radio"/> IPv4 Network on a Single Interface	
<input type="radio"/> IPv6 Network on a Single Interface	
<input type="radio"/> IPv4 Network on Four Interfaces	
<input type="radio"/> IPv6 Network on Four Interfaces	

CANCEL BACK NEXT

Step 13

Click **Next**. The **Deploy OVF Template** window is refreshed, with **7 - Select Storage** highlighted. Choose the relevant option from the **Select virtual disk format** drop-down list. From the table, choose the datastore you want to use, and review its properties to ensure there is enough available storage.

Figure 2: Select Storage

Deploy OVF Template

- ✓ 1 Select an OVF template
- ✓ 2 Select a name and folder
- ✓ 3 Select a compute resource
- ✓ 4 Review details
- ✓ 5 License agreements
- ✓ 6 Configuration
- 7 Select storage**
- 8 Select networks
- 9 Customize template
- 10 Ready to complete

Select storage
Select the storage for the configuration and disk files.

Encrypt this virtual machine (Requires Key Management Server)

Select virtual disk format: Thin Provision

VM Storage Policy: Datastore Default

Name	Capacity	Provisioned	Free	Type	Cluster
datastore62	2.17 TB	1.66 GB	2.17 TB	VMFS 5	
datastore62-hdd-1	1.64 TB	1.43 GB	1.63 TB	VMFS 6	
datastore62-ssd-1	1.09 TB	1.42 GB	1.09 TB	VMFS 6	
datastore62-ssd-2	371.5 GB	1.41 GB	370.09 GB	VMFS 6	

Compatibility

✓ Compatibility checks succeeded.

CANCEL BACK NEXT

Note

For production deployment, choose the **Thick Provision Eager Zeroed** option because this will preallocate disk space and provide the best performance. For lab purposes, we recommend the **Thin Provision** option because it saves disk space.

Step 14

Click **Next**. The **Deploy OVF Template** window is refreshed, with **8 - Select networks** highlighted. From the **Destination Network** drop-down list, select the proper networks for the Management Network and the Data Network.

Figure 3: Select a deployment configuration

8. Select networks

Select a destination network for each source network.

Source Network	Destination Network
Management Network	VM Network
Data Network	DPortGroup10
Admin Network	VM Network
NBI Network	VM Network

IP Allocation Settings

CANCEL BACK NEXT

Important

Keep Admin Network and NBI Network at default values.

Step 15

Click **Next**. The **Deploy OVF Template** window is refreshed, with **9 - Customize template** highlighted.

- Expand the **Management Network** settings. Provide information for the IPv4 or IPv6 deployment (as per your selection).
- Expand the **Data Network** settings. Provide information for the IPv4 or IPv6 deployment (as per your selection).

Figure 4: Customize template settings

Deploy OVF Template

4 properties have invalid values

1 Select an OVF template
 2 Select a name and folder
 3 Select a compute resource
 4 Review details
 5 License agreements
 6 Configuration
 7 Select storage
 8 Select networks
 9 **Customize template**
 10 Ready to complete

Management Network	3 settings
Management IPv4 Address	Please enter the VM's IPv4 management address. 10.10.100.101
Management IPv4 Netmask	Please enter the VM's IPv4 management netmask. 255.255.255.0
Management IPv4 Gateway	Please enter the VM's IPv4 management gateway. 10.10.100.1
Data Network	3 settings
Data IPv4 Address	Please enter the VM's IPv4 data address. 10.10.200.101
Data IPv4 Netmask	Please enter the VM's IPv4 data netmask. 255.255.255.0
Data IPv4 Gateway	Please enter the VM's IPv4 data gateway. 10.10.200.1
Deployment Credentials	2 settings
Original VM Username	Default custom administrator username: csw-admin

CANCEL BACK NEXT

- c) Expand the **Deployment Credentials** settings. Enter relevant values for the VM Username and Password.

Note Use a strong VM Password (8 characters long, including upper & lower case letters, numbers, and at least one special character). Avoid using passwords similar to dictionary words (for example, "Pa55w0rd!") or relatable words. While they satisfy the criteria, such passwords are weak and will be rejected resulting in failure to setup the VM.

- d) Expand the **DNS and NTP Servers** settings. According to your deployment configuration (IPv4 or IPv6), the fields that are displayed are different. Provide information in the following three fields:
- **DNS IP Address:** The IP addresses of the DNS servers you want the Cisco Crosswork server to use. Separate multiple IP addresses with spaces.
 - **DNS Search Domain:** The name of the DNS search domain.
 - **NTP Servers:** The IP addresses or host names of the NTP servers you want to use. Separate multiple IPs or host names with spaces.

Deploy OVF Template

<ul style="list-style-type: none"> ✓ 1 Select an OVF template ✓ 2 Select a name and folder ✓ 3 Select a compute resource ✓ 4 Review details ✓ 5 License agreements ✓ 6 Configuration ✓ 7 Select storage ✓ 8 Select networks <li style="background-color: #005596; color: white; padding: 2px;">9 Customize template 10 Ready to complete 	<div style="border: 1px solid #ccc; padding: 5px;"> <div style="background-color: #e6f2ff; padding: 2px; margin-bottom: 5px;"> ▼ Deployment Credentials 2 settings </div> <div style="padding: 5px;"> <p>Original VM Username Default system administrator username: cw-admin</p> <p><input type="text" value="cw-admin"/></p> </div> <hr/> <div style="padding: 5px;"> <p>VM Password Password for the default system administrator account</p> <p>Password <input type="password" value="....."/></p> <p>Confirm Password <input type="password" value="....."/></p> </div> </div> <div style="background-color: #e6f2ff; padding: 2px; margin-bottom: 5px;"> ▼ DNS and NTP Servers 3 settings </div> <div style="padding: 5px;"> <p>DNS IPv4 Address Please enter the DNS server's IPv4 address. Multiple DNS server IPs can be provided space separated.</p> <p><input type="text" value="8.8.8.8.8.4.4"/></p> </div> <hr/> <div style="padding: 5px;"> <p>NTP Servers Please enter NTP server hostname. Multiple NTP servers can be provided space separated.</p> <p><input type="text" value="ntp.crosswork.com"/></p> </div> <hr/> <div style="padding: 5px;"> <p>DNS Search Domain Please enter the DNS search domain.</p> <p><input type="text" value="crosswork.com"/></p> </div>
--	--

▼ Disk Configuration 5 settings

Logfs Disk Size Please enter the size of the logfs disk in GB.

Note The DNS and NTP servers must be reachable using the network interfaces you have mapped on the host. Otherwise, the configuration of the VM will fail.

- e) The default **Disk Configuration** settings should work for most environments. Change the settings only if you are instructed to by the Cisco Customer Experience team.
- f) Expand **Crosswork Configuration** and enter your legal disclaimer text (users will see this text if they log into the CLI).
- g) Expand **Crosswork Cluster Configuration**. Provide relevant values for the following fields:
 - **VM Type**: Choose **Hybrid**.
 - **Cluster Seed node**: Choose **True**.
 - **Crosswork Management Cluster Virtual IP**: Enter the Management Virtual IP address and Management Virtual IP DNS name.
 - **Crosswork Data Cluster Virtual IP**: Enter the Data Virtual IP address. and the Data Virtual IP DNS name.
 - **Initial node count**: Set to 1.
 - **Initial leader node count**: Set to 1.
 - **Location of VM**: Enter the location of VM.
 - **Installation type**: Not applicable to single VM deployment. Do not select any checkbox.
 - **Enable Skip Auto Install Feature**: Set to **True**.
 - **Ignore Diagnose Failure?**: Use the default value (False).
 - **Enable Diagnostics Script Check Run?**: Use the default value (False).

- **Default Application Resource Profile:** Use the default value (Empty).
- **Default Infra Resource Profile:** Use the default value (Empty).
- **Auto Action Manifest Definition:** Use the default value (Empty).

- Step 16** Click **Next**. The **Deploy OVF Template** window is refreshed, with **10 - Ready to Complete** highlighted.
- Step 17** Review your settings and then click **Finish** if you are ready to begin deployment. Wait for the deployment to finish before continuing. To check the deployment status:
- Open a VMware vCenter client.
 - In the **Recent Tasks** tab of the host VM, view the status of the **Deploy OVF template** and **Import OVF package** jobs.
- Step 18** Once the deployment is completed, right-click on the VM and select **Edit Settings**. The **Edit Settings** dialog box is displayed. Under the **Virtual Hardware** tab, update these attributes based on your profile requirement.
- **CPU:** change to **16** (for small profile) or **24** (for large profile)
 - **Memory:** change to **128 GB** (for small profile) or **256 GB** (for large profile)
- Click **OK** to save the changes.
- Step 19** Power on the Cisco Crosswork Planning VM. To power on, expand the host's entry, click the Cisco Crosswork Planning VM, and then choose **Actions > Power > Power On**.
- The time taken to create the VM can vary based on the size of your deployment profile and the performance characteristics of your hardware.

Install Cisco Crosswork Planning via the OVF Tool

This topic explains how to deploy Cisco Crosswork Planning on a single VM using the OVF tool. You must modify the list of mandatory and optional parameters in the script as per your requirements and run the OVF tool.



Note The file names mentioned in this topic are sample names and may differ from the actual file names on *cisco.com*.

Follow these steps to log in to the Cisco Crosswork Planning VM from SSH:

Before you begin

- In your vCenter data center, go to **Host > Configure > Networking > Virtual Switches** and select the virtual switch. In the virtual switch, select **Edit > Security**, and ensure that the following DVS port group properties are as shown:
 - Set **Promiscuous mode** as **Reject**
 - Set **MAC address changes** as **Reject**

Confirm the settings and repeat the process for each virtual switch used by Cisco Crosswork Planning.

- Ensure you are using the OVF tool version 4.4 or higher.

Procedure

- Step 1** On the machine where you have the OVF tool installed, use the following command to confirm that you have OVF tool version 4.4:

```
ovftool --version
```

- Step 2** Create the script file (see example below) and provide relevant information as per your target environment (such as IP addresses, gateway, netmask, password, and VCENTER_PATH, etc.).

```
cat cp_install.sh
#!/usr/bin/env bash
Host="X.X.X.X"
DM="thick"
DS="DS36"
Deployment="cw_ipv4"
DNSv4="10.10.0.99"
NTP="ntp.cisco.com"
Timezone="US/Pacific"
EnforcePodReservations="True"
EnableSkipAutoInstallFeature="False"
Domain="cisco.com"
Disclaimer="ACCESS IS MONITORED"
VM_NAME="cp"
DataNetwork="DataNet"
ManagementNetwork="MgmtNet"
DataIPv4Address="x.x.x.x"
DataIPv4Gateway="x.x.x.x"
DataIPv4Netmask="x.x.x.x"
ManagementIPv4Address="x.x.x.x"
ManagementIPv4Gateway="x.x.x.x"
ManagementIPv4Netmask="x.x.x.x"
K8sServiceNetworkV4="10.75.0.0"
K8sPodNetworkV4="10.225.0.0"
Password="CLI Password"
Username="cw-admin"
ManagementVIP="x.x.x.x"
DataVIP="x.x.x.x"
VMType="Hybrid"
IsSeed="True"
InitNodeCount="1"
InitMasterCount="1"

CP_OVA_PATH=$1

VCENTER_LOGIN="Administrator%40vsphere%2Elocal:password%40123%21@vCenter_IP"
VCENTER_PATH="DC1/host"

ovftool --version
ovftool --acceptAllEulas --skipManifestCheck --X:injectOvfEnv -ds=$DS \
--numberOfCpus:"*" =24 --viCpuResource=:32000: \
--memorySize:"*" =256000 --viMemoryResource=:256000: \
--diskMode=$DM --overwrite --powerOffTarget --powerOn --noSSLVerify \
--allowExtraConfig \
--deploymentOption=$Deployment \
--prop:"DNSv4=${DNSv4}" \
--prop:"NTP=${NTP}" \
--prop:"Timezone=${Timezone}" \
```

```

--prop:"EnforcePodReservations=${EnforcePodReservations}" \
--prop:"EnableSkipAutoInstallFeature=${EnableSkipAutoInstallFeature}" \
--prop:"Domain=${Domain}" \
--prop:"Disclaimer=${Disclaimer}" \
--name=$VM_NAME \
--net:"Data Network=${DataNetwork}" \
--net:"Management Network=${ManagementNetwork}" \
--prop:"DataIPv4Address=${DataIPv4Address}" \
--prop:"DataIPv4Gateway=${DataIPv4Gateway}" \
--prop:"DataIPv4Netmask=${DataIPv4Netmask}" \
--prop:"ManagementIPv4Address=${ManagementIPv4Address}" \
--prop:"ManagementIPv4Gateway=${ManagementIPv4Gateway}" \
--prop:"ManagementIPv4Netmask=${ManagementIPv4Netmask}" \
--prop:"K8sServiceNetworkV4=${K8sServiceNetworkV4}" \
--prop:"K8sPodNetworkV4=${K8sPodNetworkV4}" \
--prop:"CWPassword=${Password}" \
--prop:"CWUsername=${Username}" \
--prop:"ManagementVIP=${ManagementVIP}" \
--prop:"DataVIP=${DataVIP}" \
--prop:"VMType=${VMType}" \
--prop:"IsSeed=${IsSeed}" \
--prop:"InitNodeCount=${InitNodeCount}" \
--prop:"InitMasterCount=${InitMasterCount}" \
$CP_OVA_PATH \
vi://$VCENTER_LOGIN/$VCENTER_PATH/$Host

```

Note The recommended CPU parameters for Small and Large profiles are as follows:

- Small profile:

```

--numberOfCpus:"*"=16 --viCpuResource=:24000: \
--memorySize:"*"=128000 --viMemoryResource=:128000: \

```

- Large profile:

```

--numberOfCpus:"*"=24 --viCpuResource=:32000: \
--memorySize:"*"=256000 --viMemoryResource=:256000: \

```

Step 3 Download the OVA and install scripts from [cisco.com](https://www.cisco.com). For the purpose of these instructions, we use the file name as **signed-cw-na-planning-7.0.0-85-release700-240823**.

Use the following command to extract the files from the tar bundle:

```
tar -xvzf signed-cw-na-planning-7.0.0-85-release700-240823.ova
```

The OVA is extracted:

```

cp]# ls -al
-rw-r--r--  1 root root 15416145920 Mar 28 11:12 signed-cw-na-planning-7.0.0-85-
release700-240823.ova
-rwxr-xr-x  1 root root           2324 Apr  2 14:06 cp_install.sh

```

Step 4 Use the following command to make the scripts executable:

```
chmod +x {filename}
```

For example:

```
chmod +x cp_install.sh
```

Step 5 Execute the script with the OVA file name as parameter:

```

cp]# ./cp_install.sh signed-cw-na-planning-7.0.0-85-release700-240823.ova
VMware ovftool 4.4.0 (build-16360108)
Opening OVA source: signed-cw-na-planning-7.0.0-85-release700-240823.ova

```

```
<Removed some output >  
Completed successfully
```

The time taken to create the VM can vary based on the size of your deployment profile and the performance characteristics of your hardware.

Install Cisco Crosswork Planning Using the Docker Installer Tool

This section explains the procedure to install Cisco Crosswork Planning on a single VM using the docker installer tool. This method is less recommended compared to using the vCenter UI or the OVF tool for installation.

Before you begin

- Make sure that your environment meets all the vCenter requirements specified in [VMware Settings, on page 4](#).
- The edited template in the `/data` directory contains sensitive information (VM passwords and the vCenter password). The operator needs to manage access to this content. Store the templates used for your install in a secure environment or edit them to remove the passwords.
- The `install.log`, `install_tf.log`, and `.tfstate` files will be created during the install and stored in the `/data` directory. If you encounter any trouble with the installation, provide these files to the Cisco Customer Experience team when opening a case.
- The install script is safe to run multiple times. Upon error, input parameters can be corrected and re-run. You must remove the `install.log`, `install_tf.log`, and `tfstate` files before each re-run. Running the installer tool multiple times may result in the deletion and re-creation of VMs.
- In case you are using the same installer tool for multiple Cisco Crosswork Planning installations, it is important to run the tool from different local directories, allowing for the deployment state files to be independent. The simplest way for doing so is to create a local directory for each deployment on the host machine and map each one to the container accordingly.
- Docker version 19 or higher is required while using the installer tool. For more information on Docker, see <https://docs.docker.com/get-docker/>.
- To change the install parameters or to correct the parameters following the installation errors, it is important to distinguish whether the installation has managed to deploy the VM or not. Deployed VM is evidenced by the output of the installer similar to:

```
vsphere_virtual_machine.crosswork-IPv4-vm["1"]: Creation complete after 2m50s  
[id=4214a520-c53f-f29c-80b3-25916e6c297f]
```

Known limitations:

- The vCenter host VMs defined must use the same network names (vSwitch) across all hosts in the data center.
- The vCenter storage folders or datastores organized under a virtual folder structure, are not supported currently. Ensure that the datastores referenced are not grouped under a folder.

Procedure

Step 1 In your Docker capable machine, create a directory where you will store everything you will use during this installation.

Note If you are using a Mac, ensure that the directory name is in lower case.

Step 2 Download the installer bundle (.tar.gz file) and the OVA file from cisco.com to the directory you created previously. For the purpose of these instructions, we will use the file name as **signed-cw-na-planning-installer-7.0.0-85-release700-240823.tar.gz** and **signed-cw-na-planning-7.0.0-85-release700-240823.ova**.

Attention The file names mentioned in this topic are sample names and may differ from the actual file names on *cisco.com*.

Step 3 Use the following command to unzip the installer bundle:

```
tar -xvf signed-cw-na-planning-installer-7.0.0-85-release700-240823.tar.gz
```

The contents of the installer bundle is unzipped to a new directory (for example, `signed-cw-na-planning-installer-7.0.0-85-release700`). This new directory will contain the installer image (**cw-na-planning-installer-7.0.0-85-release700-240823.tar.gz**) and files necessary to validate the image.

Step 4 Review the contents of the README file to understand everything that is in the package and how it will be validated in the following steps.

Step 5 Use the following command to verify the signature of the installer image:

Note Use `python --version` to find out the version of python on your machine.

If you are using Python 2.x, use the following command to validate the file:

```
python cisco_x509_verify_release.py -e <.cer file> -i <.tar.gz file> -s
<.tar.gz.signature file> -v dgst -sha512
```

If you are using Python 3.x, use the following command to validate the file:

```
python3 cisco_x509_verify_release.py3 -e <.cer file> -i <.tar.gz file> -s
<.tar.gz.signature file> -v dgst -sha512
```

Note If you do not have Python installed, go to python.org and download the version of Python that is appropriate for your work station.

Step 6 Use the following command to load the installer image file into your Docker environment.

```
docker load -i <.tar.gz file>
```

For example:

```
docker load -i cw-na-planning-installer-7.0.0-85-release700-240823.tar.gz
```

Step 7 Run the `docker image list` or `docker images` command to get the "image ID" (which is needed in the next step).

For example:

```
docker images
```

The result will be similar to the following: (section we will need is underlined for clarity)

```
My Machine% docker images
REPOSITORY                TAG                IMAGE ID           CREATED           SIZE
dockerhub.cisco.com/cw-installer  cw-na-planning-7.0.0-85-
                           release700-240823  316c53341bde     7 days ago      280MB
```

Note Pay attention to the "CREATED" time stamp in the table presented when you run `docker images`, as you might have other images present from the installation of prior releases. If you wish to remove these, the `docker image rm {image id}` command can be used.

Step 8

Launch the Docker container using the following command:

```
docker run --rm -it -v `pwd`::/data {image id of the installer container}
```

To run the image loaded in our example, use the following command:

```
docker run --rm -it -v `pwd`::/data 316c53341bde
```

- Note**
- You do not have to enter that full value. In this case, `docker run --rm -it -v `pwd`::/data 316` was adequate. Docker requires enough of the image ID to uniquely identify the image you want to use for the installation.
 - In the above command, we are using the backtick (```). Do not use the single quote or apostrophe (`'`) as the meaning to the shell is very different. By using the backtick (recommended), the template file and OVA will be stored in the directory where you are on your local disk when you run the commands, instead of inside the container.
 - When deploying a IPv6 setup, the installer needs to run on an IPv6 enabled container/VM. This requires additionally configuring the Docker daemon before running the installer, using the following method:
 - Linux hosts (ONLY):** Run the Docker container in host networking mode by adding the `--network host` flag to the Docker run command line.


```
docker run --network host <remainder of docker run options>
```
 - Centos/RHEL hosts, by default, enforce a strict SELinux policy which does not allow the installer container to read from or write to the mounted data volume. On such hosts, run the Docker volume command with the `Z` option as shown below:


```
docker run --rm -it -v `pwd`::/data:Z <remainder of docker options>
```

Note The Docker command provided will use the current directory to read the template and the ova files, and to write the log files used during the install. If you encounter either of the following errors you should move the files to a directory where the path is in lowercase (all lowercase, no spaces or other special characters). Then navigate to that directory and rerun the installer.

Error 1:

```
% docker run --rm -it -v `pwd`::/data 316
docker: invalid reference format: repository name must be lowercase.
See 'docker run --help'
```

Error 2:

```
docker: Error response from daemon: Mounts denied: approving /Users/Desktop:
file does not exist
ERRO[0000] error waiting for container: context canceled
```

Step 9

Navigate to the directory with the VMware template.

```
cd /opt/installer/deployments/7.0.0/vcentre
```

Step 10 Copy the template file found under `/opt/installer/deployments/7.0.0/vcentre/deployment_template_tfvars` to the `/data` folder using a different name.

For example, `cp deployment_template_tfvars /data/deployment.tfvars`

For the rest of this procedure, we will use `deployment.tfvars` in all the examples.

Step 11 Edit the template file located in the `/data` directory in a text editor, to match your planned deployment (for reference, see [Sample Manifest Template, on page 28](#)). The `<sample manifest template>` includes an example that you can reference for proper formatting. The example is more compact due to the removal of descriptive comments.

Step 12 From the `/opt/installer` directory, run the installer.

```
./cw-installer.sh install -m /data/<template file name> -o /data/<.ova file>
```

For example:

```
./cw-installer.sh install -m /data/deployment.tfvars -o /data/cw-na-planning-7.0.0-85-release700-240823.ova
```

Step 13 Read, and then enter "yes" if you accept the End User License Agreement (EULA). Otherwise, exit the installer and contact your Cisco representative.

Step 14 Enter "yes" when prompted to confirm the operation.

Note It is not uncommon to see some warnings like the following during the install:

```
Warning: Line 119: No space left for device '8' on parent controller '3'.
Warning: Line 114: Unable to parse 'enableMPTSupport' for attribute 'key' on element 'Config'.
```

If the install process proceeds to a successful conclusion (see sample output below), these warnings can be ignored.

Sample output:

```
cw_vms = <sensitive>
INFO: Copying day 0 state inventory to CW
INFO: Waiting for deployment status server to startup on 10.90.147.66.
Elapsed time 0s, retrying in 30s
Crosswork deployment status available at http://{VIP}:30602/d/NK1bwVxGk/crosswork-
deployment-readiness?orgId=1&refresh=10s&theme=dark
Once deployment is complete login to Crosswork via: https://{VIP}:30603/#/logincontroller
INFO: Cw Installer operation complete.
```

Note If the installer fails for any reason (for example, mistyped IP address), correct the error and rerun the install script.

If the installation fails, open a case with Cisco and provide the `.log` files that were created in the `/data` directory (and the local directory where you launched the installer Docker container), to Cisco for review. The two most common reasons for the install to fail are: (a) password that is not adequately complex, and (b) errors in the template file. If the installer fails for any errors in the template (for example, mistyped IP address), correct the error and rerun the install script.

Sample Manifest Template

This section presents the manifest template example for deploying Cisco Crosswork Planning on a single VM.



Note Ensure that the `vm_sizes` parameter is set in accordance with your deployment profile. The following two profiles are supported in Cisco Crosswork Planning:

```
vm_sizes = {
  "Small" = {
    vcpus = 16,
    cpu_reservation = 24000,
    memory = 128000
  },
  "Large" = {
    vcpus = 24,
    cpu_reservation = 32000,
    memory = 256000
  }
}
```

```
Cw_VM_Image = "cw-na-planning-7.0.0-85-release700-240823" # Line added automatically by
installer.
ClusterIPStack = "IPv4"
ManagementVIP = "172.20.118.86"
ManagementIPNetmask = "255.255.255.0"
ManagementIPGateway = "172.20.118.1"
DataVIP = "172.20.118.87"
DataIPNetmask = "255.255.255.0"
DataIPGateway = "172.20.118.1"
DNS = "172.24.97.250"
DomainName = "cisco.com"
CWPassword = "*****!"
VMSize = "Small"
NTP = "ntp.esl.cisco.com"
Timezone = "Asia/Calcutta"
DefaultApplicationResourceProfile = "small"
EnableSkipAutoInstallFeature = "True"
# VM size definitions
vm_sizes = {
  "Small" = {
    vcpus = 16,
    cpu_reservation = 32000,
    memory = 128000
  }
}
EnforcePodReservations = "False"
ThinProvisioned = "true"
ManagerDataFsSize = "2000"
BackupMinPercent = "5"
SchemaVersion = "7.0.0"

CwVMs = {
  "0" = {
    VMName = "vm1",
    ManagementIPAddress = "172.20.118.88",
    DataIPAddress = "172.20.118.89",
    NodeType = "Hybrid"
  }
}

VCentreDC = {
  VCentreAddress = "172.20.118.84",
  VCentreUser = "<your-username>",
  VCentrePassword = "*****",
```

```

DCname = "cp",
MgmtNetworkName = "VM Network",
DataNetworkName = "cwdata-group",
VMS = [
  {
    HostedCwVMs = ["0"],
    Host = "172.20.118.81",
    Datastore = "datastore1 (2)",
    HSDatastore = "datastore1 (2)"
  }
]
}
SchemaVersion = "7.0.0"

```

Migrate Collector Configurations

In Cisco Crosswork Planning, you can migrate the collector configurations from Cisco WAE 7.5.x/7.6.x, as well as from one Cisco Crosswork Planning instance to the other.



Note When using collectors that have file upload options, ensure to upload the correct files after importing the collector configuration. This is necessary because, after importing the configuration, the server restores only the file name and not the actual file. If the correct file is not used, then the collection fails.

Migrate Collector Configuration from Cisco WAE

Follow these steps to migrate the collector configurations from Cisco WAE 7.5.x/7.6.x to Cisco Crosswork Planning.

Before you begin

- Download the upgrade script from [Cisco Download Software](#) site.

Procedure

Step 1 If you have not backed up the configuration, use the following steps to back up and migrate it to a configuration compatible with Cisco Crosswork Planning:

- Log in to the machine where Cisco WAE 7.x is installed.
- Enter the following command:

```
# ./wae_upgrade --export --install-dir <WAE_7.x_INSTALL_DIR> --cfg-dir
<dir_to_save_exported_config>
```

Where:

```

--install-dir  indicates the directory where 7.x WAE is installed
--cfg-dir      indicates the folder where the backup of 7.x configuration
               must reside

```

Step 2 If you already have the backed-up configuration, use the following steps to convert the file into a format compatible with Cisco Crosswork Planning:

- a) Log in to the machine where the Cisco WAE 7.x configuration is backed up.
- b) Enter the following command:

```
# ./wae_upgrade --migrate --cfg-dir <dir_containing_7.x_config>
```

Where:

```
--cfg-dir      indicates the folder where the 7.x configuration is backed up.
                This configuration will be migrated to Cisco Crosswork Planning
                compatible configuration.
```

Step 3 Import the Cisco Crosswork Planning compatible configuration file to Cisco Crosswork Planning using the following steps:

Note Before migration, ensure that configurations are backed up using the upgrade scripts. Otherwise, the migration will fail.

- a) Log in to the Cisco Crosswork Planning UI.
- b) From the main menu, choose **Collector > Migration**.
- c) Click **Actions** and choose **Configuration migration**.

The Import configuration file window appears.

Figure 5: Import Configuration File Window

- d) From the **Import type** drop-down, choose **WAN Automation Engine**.
- e) Click **Browse** and select the Cisco WAE collector configuration file which is compatible with Cisco Crosswork Planning compatible.
- f) (Optional) If you want to overwrite the existing collector configuration, check the **Overwrite the existing data** check box.
- g) Click **Import** to import the collector configuration file.

You can monitor status of the import in the Migration page (**Collector > Migration**). Once the import is successful, the **Import status** column displays the status of the task as **Success**.



Note After migrating from Cisco WAE to Cisco Crosswork Planning, the Telnet and SSH settings are not preserved. You need to manually verify and update these settings, if required.

Migrate Collector Configuration between Cisco Crosswork Planning Instances



Note If you are using the SR-PCE collector in your configurations, ensure to update the **SR-PCE host** and **Backup SR-PCE host** fields manually after migration. This is necessary because, these fields are not updated while migrating the collector configurations between Cisco Crosswork Planning instances.

Follow these steps to migrate the collector configuration from one Cisco Crosswork Planning instance (source) to the other (target).

Procedure

Step 1 Download the collector configuration file from the source machine you want to migrate the configuration from:

- a) Log into the Cisco Crosswork Planning instance from which you want to migrate the configuration.
- b) From the main menu, choose **Collector > Migration**.
- c) Click **Actions** and choose **Configuration backup**.

The collector configuration file is downloaded to your local machine.

Step 2 Import the collector configuration file to the target machine where you want to migrate it to:

- a) Log into the Cisco Crosswork Planning instance to which you want to migrate the configuration.
- b) From the main menu, choose **Collector > Migration**.
- c) Click **Actions** and choose **Configuration migration**.

The Import configuration file window appears.

Figure 6: Import Configuration File Window

Import Configuration File

Import type
Crosswork Planning

File
[Empty text input field] **Browse**

Supported file types .cfg or .json

Overwrite the existing data

Cancel **Import**

- d) From the **Import type** drop-down, choose **Crosswork planning**.
- e) Click **Browse** and select the collector configuration file that you downloaded in the Step 1 (c).
- f) (Optional) If you want to overwrite the existing collector configuration, check the **Overwrite the existing data** check box.
- g) Click **Import** to import the collector configuration file.

You can monitor status of the import in the Migration page (**Collector > Migration**). Once the import is successful, the **Import status** column displays the status of the task as **Success**.



Note In case of traffic collection, if the traffic poller agent status is displayed as down on the Agent page after migration, even though traffic collection has run successfully, follow these steps on the Collections (**Collector** > **Collections**) page:

1. Select **Edit collection** for the collection corresponding to the agent.
2. In the Traffic collection configuration page, uncheck the **Traffic collection** check box and save the configuration.
3. Re-enable the **Traffic collection** checkbox and save the configuration again.

The screenshot displays the configuration interface for traffic collection. The 'Traffic collection' checkbox is highlighted with a red box, indicating it should be unchecked according to the instructions. The interface includes a sidebar for navigation, a main configuration area with various checkboxes and dropdown menus, and a progress indicator at the top.



CHAPTER 4

Next Steps

The following topics describe the next steps you perform to get started with Cisco Crosswork Planning. You access the Cisco Crosswork Planning UI to perform operations. For detailed information, see the *Cisco Crosswork Planning Design 7.0 User Guide* and *Cisco Crosswork Planning 7.0 Collection Setup and Administration*.

- [Log in to Cisco Crosswork Planning UI, on page 35](#)
- [Install Smart License, on page 36](#)
- [Network Model Creation, on page 36](#)

Log in to Cisco Crosswork Planning UI

After installing Cisco Crosswork Planning, you can access the Cisco Crosswork Planning UI by using the following steps.

Cisco Crosswork Planning is a browser-based application. For the supported browser versions, see [Supported Web Browsers, on page 7](#).

Procedure

Step 1 Open a web browser and enter:

```
https://<Crosswork Management Network Virtual IP (IPv4)>:30603/
```

When you access Cisco Crosswork Planning from your browser for the first time, some browsers display a warning that the site is untrusted. When this happens, follow the prompts to add a security exception and download the self-signed certificate from the server. After you do this, the browser accepts the Cisco Crosswork Planning server as a trusted site in all subsequent logins.

Step 2 The Cisco Crosswork Planning browser-based user interface displays the login window. Enter your username and password. The default administrator user name and password is **admin**. This account is created automatically at installation. The initial password for this account must be changed during installation verification. Cisco strongly recommends that you keep the default administrator credential secure, and never use it for routine logins. Instead, create new user roles with appropriate privileges and assign new users to those roles. At least one of the users you create should be assigned the "administrator" role.

Step 3 Click **Login**.

Install Smart License

A license is required to use all the features in Cisco Crosswork Planning. If you have questions about obtaining a license, contact your Cisco support representative or system administrator.

Cisco Crosswork Planning supports Smart Licensing, which enables you to monitor Cisco Crosswork Planning software licenses and endpoint license consumption easily and efficiently through a simple registration and license consumption reporting process instead of having to install node-locked license files. Details of all licenses that you have purchased are maintained in a centralized database called the Cisco Smart Software Manager (CSSM). For more information, refer to the [Cisco Smart Licensing Overview](#) on Cisco.com.

To install Smart Licensing, follow the steps outlined in the “*Workflow: Smart Licensing Configuration*” section in the “*Manage Licenses*” chapter of the *Cisco Crosswork Planning 7.0 Collection Setup and Administration*.

Network Model Creation

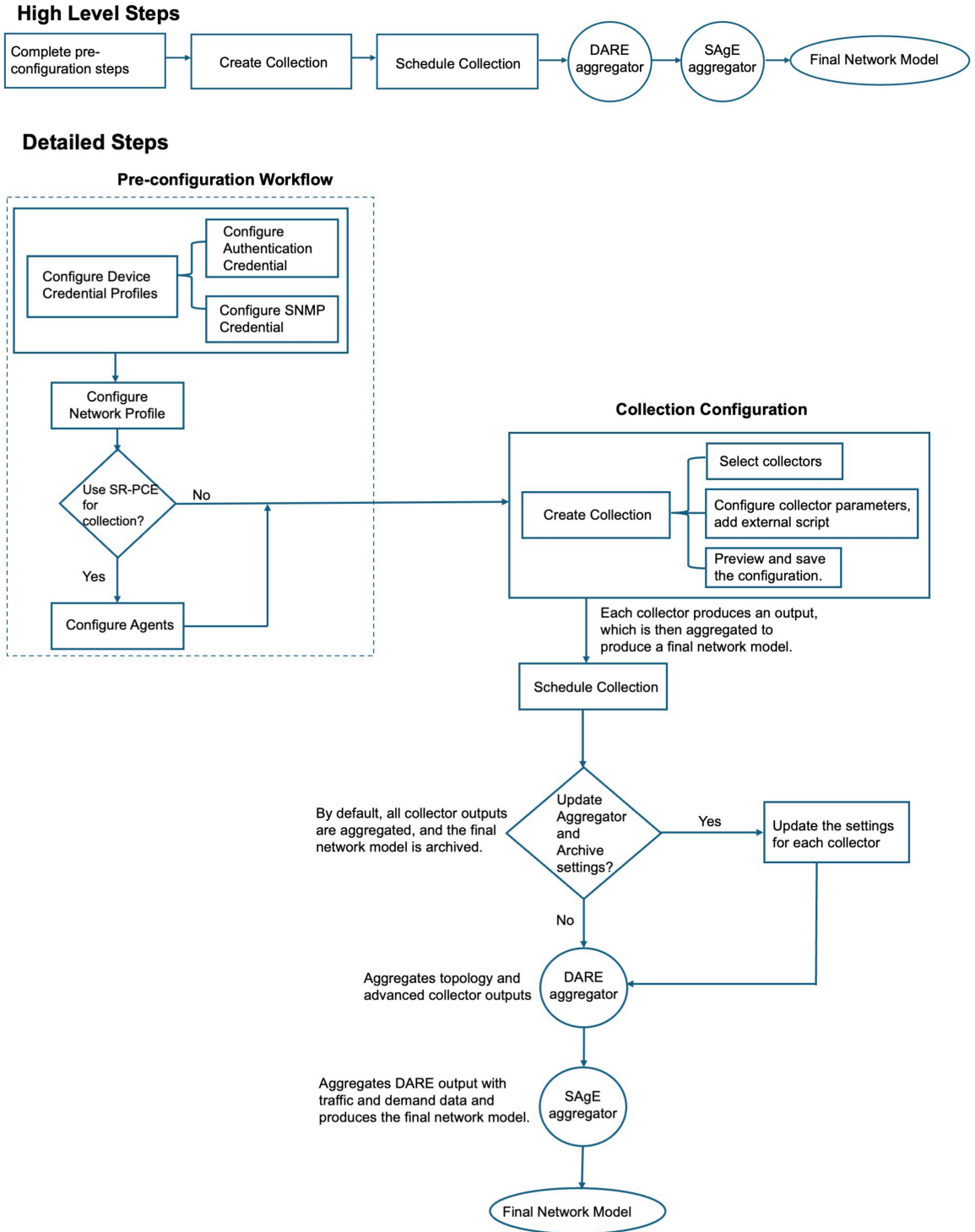
The Cisco Crosswork Planning UI provides an easy-to-use interface that hides the complexity of creating a model building chain for a network. It combines the configuration of multiple data collectors under one network (collection) and can produce a single plan file that contains the consolidated data.

Use the Cisco Crosswork Planning UI for device and network access configuration, network model creation, user management, agent configuration, and so on.

The following is a high-level description of tasks that are necessary to build a network model. For more detailed information, see the *Cisco Crosswork Planning 7.0 Collection Setup and Administration*.

1. Configure device auth groups, SNMP groups, and network profile access.
2. (Optional) Configure agents. This step is required only for collecting SR-PCE or NetFlow information.
3. Configure the collections (basic and advanced collections).
4. Schedule when to run collections.
5. (Optional) Manage the aggregation and archive of network model as per your requirement.
6. View or download the plan files in the Cisco Crosswork Planning Design application.

Figure 7: Network Model Creation Workflow





CHAPTER 5

Uninstall Cisco Crosswork Planning

This section contains the following topics:

- [Delete the VM using the vSphere UI, on page 39](#)
- [Uninstall Cisco Crosswork Planning Applications, on page 39](#)

Delete the VM using the vSphere UI

Follow these steps to delete a Cisco Crosswork Planning VM from vCenter.



Note Be aware that this procedure deletes all your app data.

Procedure

-
- Step 1** Log into the VMware vSphere Web Client.
- Step 2** In the **Navigator** pane, right-click the app VM that you want to remove and choose **Power > Power Off**.
- Step 3** Once the VM is powered off, right-click the VM again and choose **Delete from Disk**.
- The VM is deleted.
-

Uninstall Cisco Crosswork Planning Applications

This procedure describes how to uninstall a Cisco Crosswork Planning application from the UI. The **Uninstall** option removes the application, application-specific menus, and associated data.



Caution Do not uninstall **Crosswork Platform Infrastructure** and **Crosswork Planning Infra**, as this will disrupt the product's functionality. You can only uninstall the Design and Collector applications.

Procedure

Step 1 From the main menu, choose **Administration > Crosswork Manager**, and select the **Application Management** tab. The Crosswork Platform Infrastructure and any Cisco Crosswork Planning applications that were added during installation are displayed here as tiles.


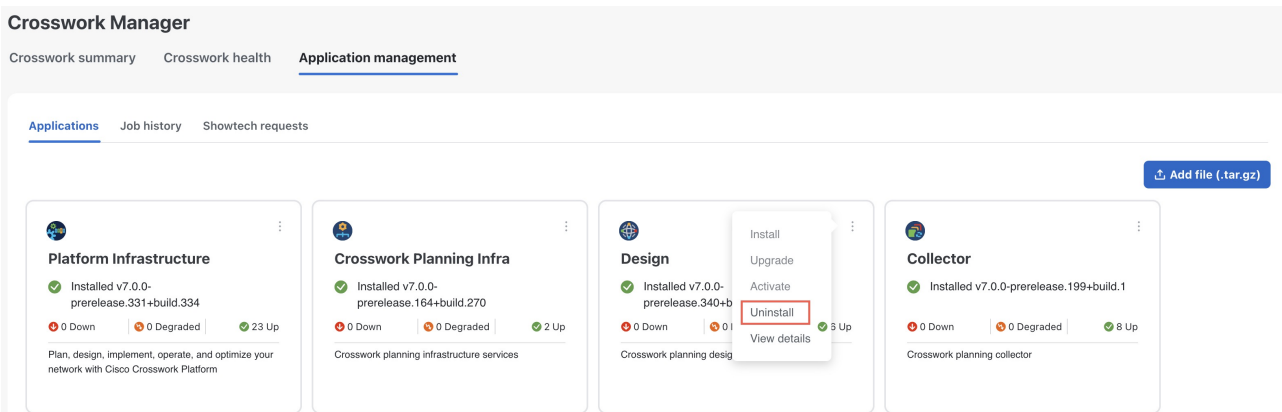
Step 2 Click  on the application tile that you want to uninstall, and select the **Uninstall** option.

Figure 8: Uninstall Applications



Step 3 Click **Uninstall** to confirm when prompted.

The selected application is uninstalled and the application tile is modified to reflect the same.

You can also view the progress of uninstallation in the Job History window (**Application Management > Job History**). If the uninstall fails, you can reattempt using the relevant options in the Job History window.

Note The uninstall operation does not remove the application file (CAPP) from the repository. The CAPP file will remain visible in the Crosswork UI, in case you want to install the application in future.