



Cisco Vision Administration Guide

Dynamic Signage Director (StadiumVision Director)

Release 6.0

First Published: 2017-11-15

THE SPECIFICATIONS AND INFORMATION REGARDING THE PRODUCTS IN THIS MANUAL ARE SUBJECT TO CHANGE WITHOUT NOTICE. ALL STATEMENTS, INFORMATION, AND RECOMMENDATIONS IN THIS MANUAL ARE BELIEVED TO BE ACCURATE BUT ARE PRESENTED WITHOUT WARRANTY OF ANY KIND, EXPRESS OR IMPLIED. USERS MUST TAKE FULL RESPONSIBILITY FOR THEIR APPLICATION OF ANY PRODUCTS.

THE SOFTWARE LICENSE AND LIMITED WARRANTY FOR THE ACCOMPANYING PRODUCT ARE INCORPORATED HEREIN BY THIS REFERENCE. IF YOU ARE UNABLE TO LOCATE THE SOFTWARE LICENSE OR LIMITED WARRANTY, CONTACT YOUR CISCO REPRESENTATIVE FOR A COPY.

The Cisco implementation of TCP header compression is an adaptation of a program developed by the University of California, Berkeley (UCB) as part of UCB's public domain version of the UNIX operating system. All rights reserved. Copyright © 1981, Regents of the University of California.

NOTWITHSTANDING ANY OTHER WARRANTY HEREIN, ALL DOCUMENT FILES AND SOFTWARE OF THESE SUPPLIERS ARE PROVIDED "AS IS" WITH ALL FAULTS. CISCO AND THE ABOVE-NAMED SUPPLIERS DISCLAIM ALL WARRANTIES, EXPRESSED OR IMPLIED, INCLUDING, WITHOUT LIMITATION, THOSE OF MERCHANTABILITY, FITNESS FOR A PARTICULAR PURPOSE AND NONINFRINGEMENT OR ARISING FROM A COURSE OF DEALING, USAGE, OR TRADE PRACTICE.

IN NO EVENT SHALL CISCO OR ITS SUPPLIERS BE LIABLE FOR ANY INDIRECT, SPECIAL, CONSEQUENTIAL, OR INCIDENTAL DAMAGES, INCLUDING, WITHOUT LIMITATION, LOST PROFITS OR LOSS OR DAMAGE TO DATA ARISING OUT OF THE USE OR INABILITY TO USE THIS MANUAL, EVEN IF CISCO OR ITS SUPPLIERS HAVE BEEN ADVISED OF THE POSSIBILITY OF SUCH DAMAGES.

Any Internet Protocol (IP) addresses and phone numbers used in this document are not intended to be actual addresses and phone numbers. Any examples, command display output, network topology diagrams, and other figures included in the document are shown for illustrative purposes only. Any use of actual IP addresses or phone numbers in illustrative content is unintentional and coincidental.

All printed copies and duplicate soft copies are considered un-Controlled copies and the original on-line version should be referred to for latest version.

Cisco has more than 200 offices worldwide. Addresses, phone numbers, and fax numbers are listed on the Cisco website at www.cisco.com/go/offices.

Cisco and the Cisco logo are trademarks or registered trademarks of Cisco and/or its affiliates in the U.S. and other countries. To view a list of Cisco trademarks, go to this URL: www.cisco.com/go/trademarks. Third-party trademarks mentioned are the property of their respective owners. The use of the word partner does not imply a partnership relationship between Cisco and any other company. (1721R)

© 2017 Cisco Systems, Inc. All rights reserved.



Contents

About This Guide	1
Document Revision History	1
Document Organization	1
Related Documentation and Resources	3
Cisco Vision Dynamic Signage Director On-Premise Architecture Overview	5
Standard Cisco Vision Dynamic Signage Director Network Architecture	5
Cisco Vision Dynamic Signage Director Server Redundancy	6
Centralized Cisco Vision Dynamic Signage Director Network Architecture	8
Hierarchical Management	8
Server Platforms	9
Virtual Server Support	9
Configuring the Cisco Vision Dynamic Signage Director Server System Settings	11
Contents	11
Prerequisites for Configuring Cisco Vision Dynamic Signage Director Server System Settings	11
How to Configure Cisco Vision Dynamic Signage Director Server System Settings	12
Completing Initial Configuration of System Settings After a Full ISO Installation	12
Configuring the Cisco Vision Dynamic Signage Director Server Network Interface	12
Editing the Hosts File	15
Restarting the Network Service on the Server	16
Generating the SSL Certificate	16
Configuring NTP on Cisco Vision Dynamic Signage Director Servers and DMPs	16
Prerequisites for Configuring NTP on Cisco Vision Dynamic Signage Director Servers and DMPs	17
Configuring the System Date and Time Using NTP on Cisco Vision Dynamic Signage Director Servers	18
Restarting the Cisco Vision Dynamic Signage Director Software	21
Configuring the Date and Time Manually	22
Configuring NTP and PTP on the Series 2 and Series 3 Media Players	22
Configuring Multicast Ports for Cisco Vision Dynamic Signage Director	27
Information about Multicast Support in Cisco Vision Dynamic Signage Director	27
Prerequisites for Configuring Multicast Ports in Cisco Vision Dynamic Signage Director	31
How to Configure Multicast Ports in Cisco Vision Dynamic Signage Director	31
What To Do Next	33

Configuring Cisco Vision Dynamic Signage Director for Multiple Venue Support	35
Contents	35
Prerequisites for Configuring Multiple Venue Support	35
Restrictions for Configuring Multiple Venue Support	35
Information About Configuring Multiple Venue Support	36
Role-Based Access Control for Hierarchical Management of Multiple Venues	36
Administrator	37
Content Manager	37
Venue Administrator	37
Venue Operator	37
Other Legacy RBAC Roles	38
Understanding Venue Association	38
Understanding Scripts and Staging Behavior in a Multi-Venue Environment	38
Script Best Practices	38
Script Staging Behavior	39
How to Configure Multiple Venue Support	39
Enabling Multiple Venue Support in Cisco Vision Dynamic Signage Director	39
Adding Venues to Cisco Vision Dynamic Signage Director	40
Associating Venues with Cisco Vision Dynamic Signage Director Objects	41
Guidelines for Associating Venues	41
Venue Association Procedure	41
Troubleshooting Venue Association Conflicts	42
Removing Venues From Cisco Vision Dynamic Signage Director	43
Selecting Venue Scope	44
Monitoring Venues From the Management Dashboard	44
How to Migrate Deployed Devices From a Single Venue to a Multiple Venue System	45
Prerequisites	45
Exporting a Device List for the Original System Configuration	46
Creating New Venues	47
Removing All Locations From Existing Groups	47
Removing Locations From Existing Suites	47
Associating Initial Locations to Venues	48
Completing Venue-Specific Information and Association of Locations Using BAT	48
Populating Group Information in the New Device List	48
System Accounts on the Cisco Vision Dynamic Signage Director Servers	51
Contents	51
Information About System Accounts	51
Common System Accounts	52
Other System Accounts	52
How to Change System Account Passwords	53
User Management in Cisco Vision Dynamic Signage Director	55

Information About User Management	55
Administrator Role Overview	55
RBAC Roles Overview	56
Access Summary by Role	59
Backing Up and Restoring Cisco Vision Dynamic Signage Director Servers	63
Contents	63
Prerequisites for Backing Up and Restoring Cisco Vision Dynamic Signage Director Servers	63
Restrictions for Backing Up and Restoring Cisco Vision Dynamic Signage Director Servers	64
Information About Backing Up and Restoring Cisco Vision Dynamic Signage Director Servers	64
Backup Environment	64
What Cisco Vision Dynamic Signage Director Data is Backed Up	65
Disk Storage and Maintenance	65
Restore Environment	65
How to Backup a Cisco Vision Dynamic Signage Director Server	65
Enabling the Backup Account on the Secondary Server	66
Setting Up the Primary Server for Automatic Backup and Restore	66
Scheduling a Regular Backup	68
Starting a Backup Manually for Immediate Execution	69
Verifying Backup Completion	70
Verifying That a Backup File Exists	70
Finding Backup Errors in the Log File	70
Modifying the Number of Backup Files to Retain	71
How to Restore a Cisco Vision Dynamic Signage Director Server	72
Starting a Restore Manually for Immediate Execution	72
Restarting the Cisco Vision Dynamic Signage Director Software	73
Configuring Failover Between Redundant Cisco Vision Dynamic Signage Director Servers	75
Contents	75
Prerequisites for Configuring Failover Between Redundant Cisco Vision Dynamic Signage Director Servers	75
Restrictions for Configuring Failover Between Redundant Cisco Vision Dynamic Signage Director Servers	76
Information About Failover Between Redundant Cisco Vision Dynamic Signage Director Servers	76
How to Promote a Standby Secondary Server to the Active Server	77
Starting and Configuring the Services on the Secondary Server	78
Restoring the Secondary Server with System Data From a Backup File	78
Stopping Services and Auto-Restart, and Shutting Down the Primary Server	79
Shutting Down Services on the Secondary Server	79
Changing the IP Address on the Secondary Server	79
Prerequisites	79
Procedure	80

Restarting the Network Service on the Secondary Server	80
Verifying Network Connectivity to the Secondary Server	81
Clearing the ARP Cache on the Switch	81
Restarting Cisco Vision Dynamic Signage Director on the Secondary Server	82
Verifying the Cisco Vision Dynamic Signage Director Configuration on the Secondary Server	82
How to Restore the Primary Server to Active	82
Prerequisites	83
Stopping Services and Auto-Restart on the Secondary Server	83
Changing the IP Address on the Secondary Server	83
Prerequisites	83
Procedure	84
Verifying Network Connectivity on the Secondary Server	84
Starting and Configuring the Services on the Original Primary Server	85
Verifying Network Connectivity to the Primary Server	85
Restoring the Original Primary Server with System Data From a Backup File	86
Restarting the Cisco Vision Dynamic Signage Director Software	86
Verifying the Cisco Vision Dynamic Signage Director Configuration on the Original Primary Server	86
86	
Upgrading the Primary Server Software	87
Reconfiguring the Backup Environment After Upgrades	87
Cisco Vision Dynamic Signage Director Server Text Utility Interface	89
Contents	89
Information About the TUI	89
Overview of the TUI Menus	90
Working with the TUI Interface	92
Menu Navigation	92
File Editor	92
How to Use the TUI	93
Logging Into the TUI	93
Displaying System Information	94
Exiting the TUI	94
Related Documentation	95
System State Reports	97
Information About System State Reports	97
How to Run a System State Report	98
Running a System State Report Manually	99
Scheduling a System State Report	99
Viewing Reports	99
Viewing Scheduled Reports and Previous Reports	100
Viewing the Contents of the Zip File	100



About This Guide

This document describes the tasks involved in setting up and maintaining the Cisco Vision Dynamic Signage Director system.

The content is intended for Cisco Vision system administrators and technical field engineers who are responsible for designing and deploying Cisco Vision solutions. It is expected that readers of this document are familiar with basic IP networking and Linux.

Document Revision History

Table 1 lists the technical changes made to this document since it was first published.

Table 1 Document Revision History

Date	Change Summary
2017-11-15	First release of this document for Cisco Vision Dynamic Signage Director Release 6.0.

Document Organization

Chapter	Description
Cisco Vision Dynamic Signage Director On-Premise Architecture Overview, page 5	Describes the network architectures supported in Cisco Vision Dynamic Signage Director, including the centralized Cisco Vision Dynamic Signage Director network architecture, and the server platforms used to implement the solution.
Configuring the Cisco Vision Dynamic Signage Director Server System Settings, page 11	Describes how to configure the initial setup of the Cisco Vision Dynamic Signage Director server.
Configuring Cisco Vision Dynamic Signage Director for Multiple Venue Support, page 35	Describes how to enable and manage multiple venue support.
System Accounts on the Cisco Vision Dynamic Signage Director Servers, page 51	Describes the default system accounts implemented by Cisco Vision Dynamic Signage Director for access and control of certain server functions. Aside from the admin account, these system accounts are generally separate from the user accounts that secure access to the Cisco Vision Dynamic Signage Director feature configuration and operation.
User Management in Cisco Vision Dynamic Signage Director, page 55	Describes the Role-Based Access Control (RBAC) function in Cisco Vision Dynamic Signage Director to control user access to only the portions of the system for which they are trained and authorized to use.
Backing Up and Restoring Cisco Vision Dynamic Signage Director Servers, page 63	Describes how to setup and schedule backups between a primary and secondary server and restore data between them.

Chapter	Description
Configuring Failover Between Redundant Cisco Vision Dynamic Signage Director Servers, page 75	Describes the warm standby environment between two servers that run the Cisco Vision Dynamic Signage Director software, where one of the servers operates as the primary active server and the other server operates as a secondary backup server. This module explains how you can configure the backup server to become the active server if a failure occurs and also how to restore the primary server.
Cisco Vision Dynamic Signage Director Server Text Utility Interface, page 89	Provides an overview of the Text Utility Interface (TUI). The TUI provides a console-based interface for use by system installers, administrators, and troubleshooting personnel to perform routine system tasks such as modifying system configurations, changing passwords, and checking system logs.
System State Reports, page 97	Provides information about the System State Report feature that enables easy capture and export of system state data for Cisco Vision Dynamic Signage Director servers. This information can be sent to a remote support engineer to help troubleshoot any issues that occur with the system.

Related Documentation and Resources

For more information about Cisco Vision hardware and software installation, configuration, and operation, see the Cisco Vision documentation available on Cisco.com at:

www.cisco.com/go/stadiumvisiondocs

For more details, see the “Related Documentation and Resources” topic in the [Release Notes for Cisco Vision Dynamic Signage Director Release 6.0](#).



Cisco Vision Dynamic Signage Director On-Premise Architecture Overview

First Published: 2017-11-15

In its most basic design, the Cisco Vision Dynamic Signage Director on-premise architecture consists of all components of the solution implemented at a single site or venue. The basic Cisco Vision Dynamic Signage Director design can be extended to a multi-venue architecture.

In a multi-venue design, a Cisco Vision Dynamic Signage Director server installed at a central location can be used to manage and control content for multiple sites. DMPs can be installed at remote venues but still controlled by the central Cisco Vision Dynamic Signage Director server.

This module describes the standard on-premise architectures associated with Cisco Vision Dynamic Signage Director standard and multi-venue designs. It includes the following topics:

- [Standard Cisco Vision Dynamic Signage Director Network Architecture, page 5](#)
- [Centralized Cisco Vision Dynamic Signage Director Network Architecture, page 8](#)
- [Server Platforms, page 9](#)

Standard Cisco Vision Dynamic Signage Director Network Architecture

The three primary areas of the standard Cisco Vision Dynamic Signage Director network architecture include:

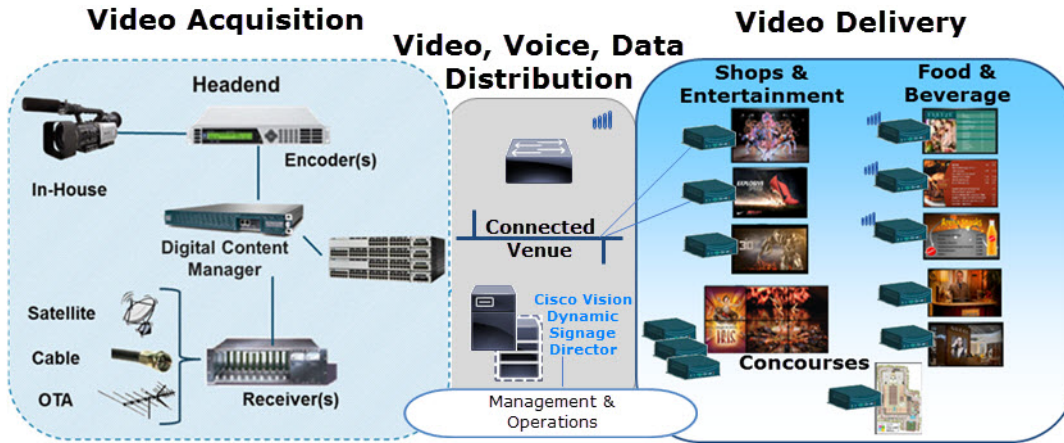
- Headend for video acquisition

The Cisco Vision Dynamic Signage Director headend is designed to acquire, process, and encode the video content used in the Cisco Vision solution.

- IP network (Connected Venue)
- Endpoints (Digital Media Players)

Figure 1 on page 6 shows the basic network architecture for a Cisco Vision Dynamic Signage Director network.

Figure 1 Basic Cisco Vision Dynamic Signage Director Architecture



Cisco Vision Dynamic Signage Director Server Redundancy

Cisco Vision Dynamic Signage Director supports an environment of two servers that run the Cisco Vision Dynamic Signage Director software, where one of the servers operates as the primary active server and the other server operates as a secondary backup server. If a failure occurs, you can configure the backup server to become the active server, but the failover process is not automatic.

Cisco Vision Dynamic Signage Director supports two, physical Platform 3 servers or a dual virtual server environment. Figure 2 on page 6 shows two virtual servers running Cisco Vision Dynamic Signage Director installed on a single subnet.

Figure 2 Cisco Vision Dynamic Signage Director Redundancy



Figure 3 on page 7 shows the architecture of Cisco Vision Dynamic Signage Director server redundancy under normal network conditions and operation. The primary and secondary servers are addressed as independent hosts with two different IP addresses on the same subnet in the Cisco Connected Venue (Connected Stadium) network.

While the secondary server is still connected to the network, notice that communication and control only occurs between the primary Cisco Vision Dynamic Signage Director server and the rest of the network, including the Digital Media Players (DMPs) and any wireless access point.

The secondary server is only connected to the network to be made available as a backup to the primary should a failure occur. In addition, the secondary server can (and should) be configured to be backed up with data from the primary server on a scheduled basis so that it can be ready as a warm standby.

Figure 3 Cisco Vision Dynamic Signage Director Redundancy Under Normal Operation

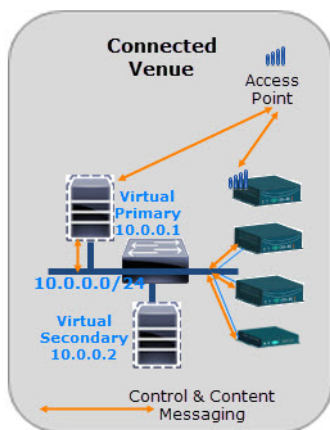
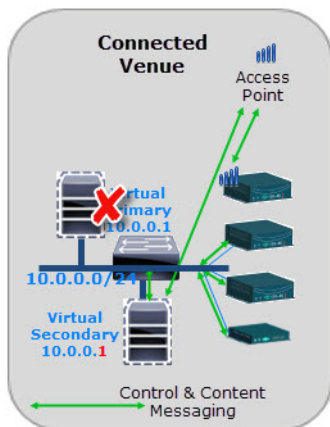


Figure 4 on page 7 shows the redundancy environment when connectivity from the primary Cisco Vision Dynamic Signage Director server fails. When the primary server fails, a manual process must take place to restore the secondary server from a backup, shut down the primary server, and activate the secondary server.

Figure 4 Cisco Vision Dynamic Signage Director Redundancy Under Manual Failover



Notice that the secondary server must be reconfigured to use the same IP address the original primary server. In this example, the secondary server IP address is changed to 10.0.0.1 (from 10.0.0.2) to match the primary server address. When the process is complete, communication and control only occurs between the newly activated secondary server and the rest of the network.

Note: The word “failover” does not mean automatic activation of a secondary server. The failover process is manual with the secondary server acting as a warm standby.

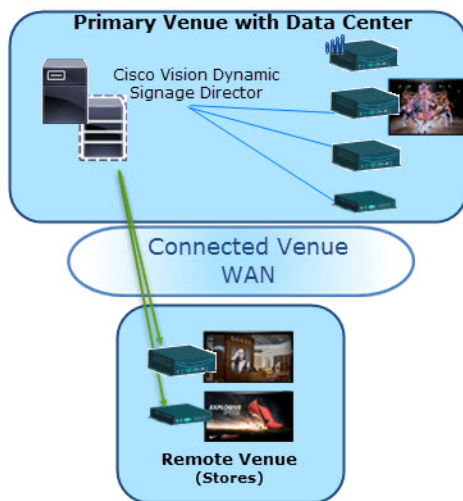
For more information about how to perform the failover process, see [Configuring Failover Between Redundant Cisco Vision Dynamic Signage Director Servers, page 75](#).

Centralized Cisco Vision Dynamic Signage Director Network Architecture

Figure 5 on page 8 shows a central Cisco Vision Dynamic Signage Director server (that is connected to the headend), with network connections over the Cisco Connected Venue WAN to multiple remote sites.

The remote venue uses only DMPs that are remotely located from primary venue, but control is retained by the central Cisco Vision Dynamic Signage Director server.

Figure 5 Centralized Cisco Vision Dynamic Signage Director with Remote Sites



Hierarchical Management

The centralized Cisco Vision Dynamic Signage Director architecture implements control of multiple venues using Hierarchical Management, which includes the following areas of functionality:

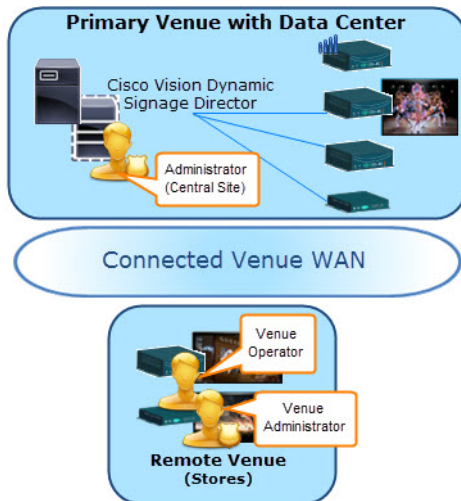
- Organization of Venue Administrator, Venue Operator, location, playlist, and script objects into site-specific groups by the Central Administrator role using venue association to manage access and control.
- Use of the Venue Operator role to limit access and control of event operation at one or more assigned remote sites.
- Use of the Venue Administrator role (introduced in Release 5.0) to provide additional administrative, but limited permissions at the venues authorized by the Central Administrator for that user, for the following areas of Cisco Vision Dynamic Signage Director:
 - Control Panel—Content, Control (Script control and Staging), and Schedule.
 - Management Dashboard—Read-only access with limited command support.
 - Command Center Monitoring—Read-only access.
 - Setup—Devices (Display specifications only); Read-only access to Zones & Groups, Channels, and Luxury Suites.

Note: External content, channels, and Dynamic Menu Board (DMB) content are global to all venues. Therefore, these global content items also can be deleted by a Venue Administrator.

Figure 6 on page 9 shows the use of Hierarchical Management in Cisco Vision Dynamic Signage Director, where a central site user with administrator role-based access control (RBAC) permissions is located at the central site data center where the primary Cisco Vision Dynamic Signage Director server resides.

The remote venues can have venue operators and venue administrators, assigned by the primary administrator.

Figure 6 Hierarchical Management in Centralized Cisco Vision Dynamic Signage Director



The Primary Administrator can perform all venue-related functions, including assigning Venue Administrators, Venue Operators, content and scripts into their corresponding venue-specific scopes of control. At the remote venues, the remote Venue Operators can control the scripts associated to their assigned venue scope-of-control.

For more information, see the following modules of this guide:

- For a description of the supported user roles in Cisco Vision Dynamic Signage Director, see [User Management in Cisco Vision Dynamic Signage Director, page 55](#).
- For information about configuring remote venues in a centralized Cisco Vision Dynamic Signage Director network architecture, see [Configuring Cisco Vision Dynamic Signage Director for Multiple Venue Support, page 35](#).

Server Platforms

Note: The Platform 3 server has reached end-of-sale (EOS). Release 5.0 is the last release to support upgrades on the Platform 3 server hardware. Future releases of Cisco Vision Dynamic Signage Director will be supported in a virtual server environment only.

The Cisco Vision Dynamic Signage Director Release 5.0 software is supported as an upgrade on existing Platform 3 physical, Cisco UCS C220 M3 rack servers, or on a virtual server platform.

New installations of Cisco Vision Dynamic Signage Director Release 5.0 are supported in a virtual server environment using Cisco Systems or other third-party hardware.

Virtual Server Support

For information about virtual server requirements and installation in Cisco Vision Dynamic Signage Director, see:

Server Platforms

- [Release Notes for Cisco Vision Dynamic Signage Director Release 6.0](#)
- [Cisco Vision Software Installation and Upgrade Guide: Dynamic Signage Director Release 6.0](#)



Configuring the Cisco Vision Dynamic Signage Director Server System Settings

First Published: 2017-11-15

This document is intended for Cisco Vision Dynamic Signage Director administrators and describes how to configure the initial setup of the Cisco Vision Dynamic Signage Director server.

Contents

- [Prerequisites for Configuring Cisco Vision Dynamic Signage Director Server System Settings, page 11](#)
- [How to Configure Cisco Vision Dynamic Signage Director Server System Settings, page 12](#)
- [What To Do Next, page 33](#)

Prerequisites for Configuring Cisco Vision Dynamic Signage Director Server System Settings

Before you configure Cisco Vision Dynamic Signage Director servers, meet the following requirements:

- The Cisco Vision Dynamic Signage Director server hardware and software is installed. For more information, see [Cisco Vision Software Installation and Upgrade Guide: Dynamic Signage Director Release 6.0](#).
- The Cisco Vision Dynamic Signage Director server is installed and you know the IP address.
- You have a supported browser version for Cisco Vision Dynamic Signage Director. For more information about the latest supported browsers, see [Cisco Vision Software Installation and Upgrade Guide: Dynamic Signage Director Release 6.0](#).

- You have either physical console access or an SSH client such as PuTTY to log into the Cisco Vision Dynamic Signage Director server.
- You know the installer account credentials on the Cisco Vision Dynamic Signage Director server.
- You understand how to use the Text Utility Interface (TUI). For more information, see [Cisco Vision Dynamic Signage Director Server Text Utility Interface, page 89](#). For simplicity in these tasks, the instruction to “select” a particular menu item implies that you type the character that corresponds to the menu option and press **Enter**.
- For NTP configuration requirements, see [Prerequisites for Configuring NTP on Cisco Vision Dynamic Signage Director Servers and DMPs, page 17](#).
- For multicast configuration requirements, see [Prerequisites for Configuring Multicast Ports in Cisco Vision Dynamic Signage Director, page 31](#).

How to Configure Cisco Vision Dynamic Signage Director Server System Settings

This section includes the following tasks:

- [Completing Initial Configuration of System Settings After a Full ISO Installation, page 12](#) (required)
- [Configuring the Cisco Vision Dynamic Signage Director Server Network Interface, page 12](#) (as required)
- [Editing the Hosts File, page 15](#) (as required)
- [Restarting the Network Service on the Server, page 16](#) (as required)
- [Generating the SSL Certificate, page 16](#) (required)
- [Configuring NTP on Cisco Vision Dynamic Signage Director Servers and DMPs, page 16](#) (required)
- [Configuring Multicast Ports for Cisco Vision Dynamic Signage Director, page 27](#) (required)

Completing Initial Configuration of System Settings After a Full ISO Installation

When you install a full ISO, you configure certain network settings in the Linux interface as part of the ISO installation such as the server IP address and DNS configuration.

If the network configuration is successfully completed as part of the installation, then generate the SSL certificate, set the date and time options on the server (NTP and PTP), and restart the Cisco Vision Dynamic Signage Director software.

For detailed information about how to configure the date and time options, see [Configuring NTP on Cisco Vision Dynamic Signage Director Servers and DMPs, page 16](#).

Note: If you were unable to complete the Linux network configuration as part of the ISO installation, complete all of the tasks in this module.

Configuring the Cisco Vision Dynamic Signage Director Server Network Interface

Note: If you were unable to complete the Linux network configuration as part of the full ISO installation, then complete this task.

This task describes how to access the Linux menus from the TUI to configure the Cisco Vision Dynamic Signage Director server network interface.

To configure the Cisco Vision Dynamic Signage Director server network interface:

1. Log into the TUI as installer using a directly-connected console or SSH client.

The TUI Main Menu is displayed.

2. From the Main Menu, go to **System Settings > Network Settings > Setup Network Information**.

Tip: To navigate through the TUI menus you must type the character that corresponds to the menu area where you want to go (a, b, c, and so on) and press Enter. To return to other menus, you must back out of the hierarchy of menus using one of the indicated keys to return you to prior menus.

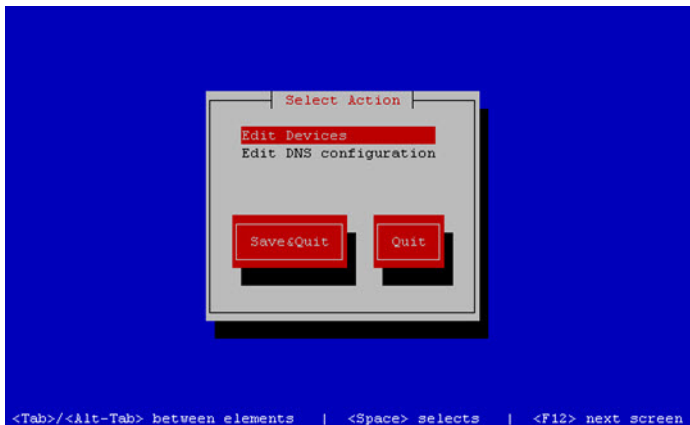
3. At the Configure Network confirmation screen, press any key to continue to enter the Linux network configuration interface.

The Select Action Linux screen is displayed with the **Edit Devices** option selected.

Tip: If you notice what appears to be stray characters in the Linux interface, verify that your SSH client is using the UTF-8 character set translation.

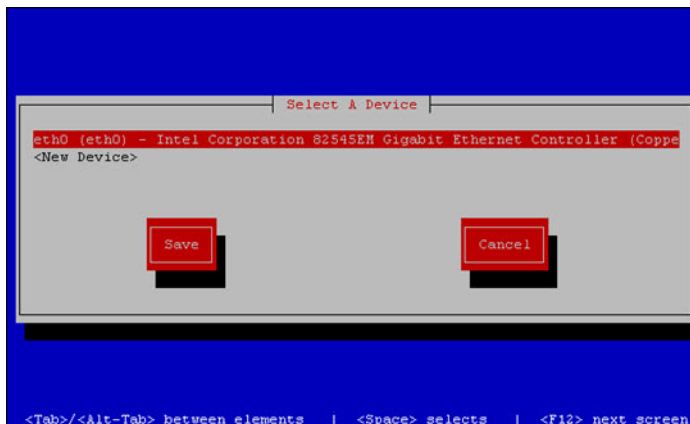
4. In the Select Action screen, select **Edit Devices** and press **Enter** (Figure 1 on page 13).

Figure 1 Select Action Screen



5. In the Select a Device screen, select **eth0** and press **Enter** (Figure 2 on page 14).

Figure 2 Select a Device Screen

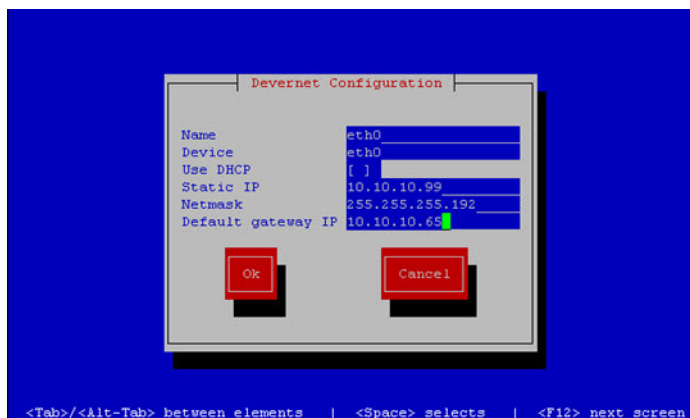


The Ethernet Configuration screen is displayed (Figure 3 on page 14).

6. In the Ethernet Configuration screen, do the following:

Note: The Linux screen is mislabeled “Devernet Configuration.”

Figure 3 Devernet Configuration Screen



- a. Press the Tab key until the cursor is positioned on the Static IP address line.
 - b. Press the backspace key to go to the beginning of the line and type in the IPv4 address of the Cisco Vision Dynamic Signage Director server.

Note: If installing on a Platform 3 server, this should be a different IP address than what you configured for the CIMC interface.
 - c. Press the tab key to go to the Netmask line. Type the network mask for the IPv4 address.
 - d. (Optional) In the Default gateway IP line, type the address of the default gateway of your network.
7. When configuration of all options is complete, press the Tab key until the **Ok** button is selected and press **Enter**.
You return to the Select a Device screen.
 8. Press the Tab key until the **Save** button is highlighted and press **Enter**.
You return to the Select Action screen.

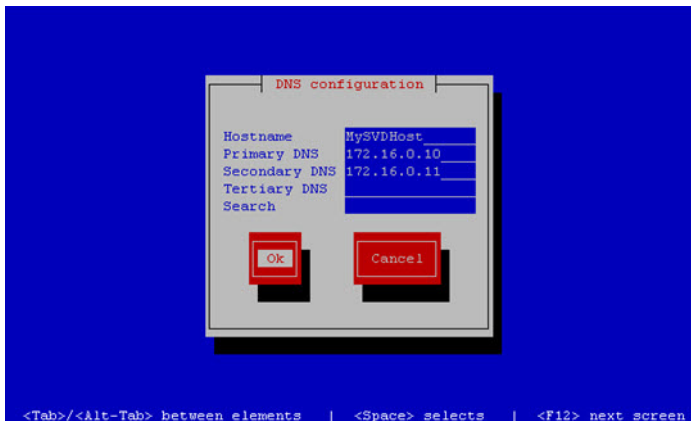
9. Press the down arrow key to select the **Edit DNS configuration** option and press **Enter**.

The DNS configuration screen is displayed.

10. In the DNS configuration screen (Figure 4 on page 15), select and configure the Hostname and one or more DNS Server IP addresses.

Note: Do not use hostnames that contain periods “.” within the name.

Figure 4 DNS Configuration Screen



11. Press the Tab key until the **Ok** button is selected and press **Enter**.

You return to the Select Action screen.

12. In the Select Action screen, press the Tab key until the **Save&Quit** button is selected and press **Enter**.

You return to the TUI Configure Network menu.

Editing the Hosts File

Note: If for some reason you were unable to complete the Linux network configuration as part of the full ISO installation, then complete this task.

Before you begin, be sure that you know how to use the vi editor. For more information, see [Cisco Vision Dynamic Signage Director Server Text Utility Interface, page 89](#).

To edit the hosts file, complete the following steps:

1. From the TUI Network Settings menu, select the **Edit hosts file** option.
2. At the confirmation prompt, press any key to open the /etc/hosts file for editing.
3. Change the line with IP address “10.10.10.10” to a comment (insert a # character at the beginning of the line) as shown in the following example:

```
#10.10.10.10
```

4. Change the line for the IPv6 localhost entry “::1” to a comment as shown in the following example:

```
#: :1
```

5. Add a line for the server IP address and hostname as shown in the following example, where x.x.x.x is the IPv4 address of the Cisco Vision Dynamic Signage Director server, and *hostname* is the name to identify the server:

x.x.x.x hostname

Note: Do not use hostnames that contain periods “.” within the name.

6. Press **Esc** to enter vi command mode.
7. Save the changes to the file by typing the following command:

`:wq`

8. Press any key to return to the Network Settings menu.

Restarting the Network Service on the Server

Note: If for some reason you were unable to complete the Linux network configuration as part of the full ISO installation, then complete this task.

After you complete the network configuration on the Cisco Vision Dynamic Signage Director server, restart the network service to apply the network configuration.

1. Log into the TUI as installer on the server using a directly-connected console or SSH client.
The TUI Main Menu is displayed.
2. From the Main Menu, go to **Services Control > Networking > Restart networking**.
The network interface eth0 is restarted.
3. Confirm that the command completed successfully.
4. Press any key to return to the Networking menu.
5. Return to the Main Menu.

Generating the SSL Certificate

Note: Generation of a new SSL certificate also is required after initial upgrade to Release 6.0.

To generate the SSL certificate, complete the following steps:

1. From the Main Menu, go to **System Settings > Network Settings**.
2. Select the **Generate certificate file** option.
3. When the confirmation warning prompt appears, type **Y** to continue and generate a new SSL certificate.
To cancel without generating a new certificate, type **N**.
4. Press any key to return to the Network Settings menu.

Configuring NTP on Cisco Vision Dynamic Signage Director Servers and DMPs

Network Time Protocol (NTP) service is required in Cisco Vision Dynamic Signage Director on the following devices:

- Cisco Vision Dynamic Signage Director servers
- Series 2 and Series 3 Precision Time Protocol (PTP) master device

NTP provides reliable clocking for your Cisco Vision network and helps ensure synchronicity between redundant servers.

Note: For optimized synchronization on the Series 2 and Series 3 media players, PTP is used. Only the PTP masters derive a clock using NTP.

You should verify the NTP configuration for your Cisco Vision Dynamic Signage Director servers, since the default NTP source is a Red Hat Linux public pool and might not be the NTP server source that you want to use for your venue.

Configuration of the DMP NTP source is done within the Cisco Vision Dynamic Signage Director Management Dashboard. As a best practice, the Cisco Vision Dynamic Signage Director server is already set as the NTP host by default for all media players. This does not need to be changed unless the venue requires a different NTP source.

Caution: The Cisco Vision Dynamic Signage Director server is itself enabled as an NTP host to provide timing to the media players only. Do not use Cisco Vision Dynamic Signage Director as an NTP host for other devices in your network.

This section includes the following tasks:

- [Prerequisites for Configuring NTP on Cisco Vision Dynamic Signage Director Servers and DMPs, page 17](#) (required)
- [Configuring the System Date and Time Using NTP on Cisco Vision Dynamic Signage Director Servers, page 18](#) (required)
- [Configuring NTP and PTP on the Series 2 and Series 3 Media Players, page 22](#) (required)

Prerequisites for Configuring NTP on Cisco Vision Dynamic Signage Director Servers and DMPs

Caution: If you are running Cisco Vision Dynamic Signage Director on a virtual server, then you should reference a reliable NTP server running on a bare metal server, rather than relying on a clock from a VM environment that can drift and is not accurate.

Before configuring NTP on Cisco Vision Dynamic Signage Director servers and DMPs, be sure that the following requirements are met:

- You understand how to use vi editor commands.
- You understand the NTP host requirements for your Cisco Vision Dynamic Signage Director servers:
 - If you do not want to use the default public pool of NTP servers for the Cisco Vision Dynamic Signage Director servers, you have the IP address or DNS name of the NTP host for your network.
 - If you plan to use a public pool of NTP servers, be sure that the servers are reachable from the Cisco Vision Dynamic Signage Director network. By default, the ntp.conf file on Cisco Vision Dynamic Signage Director servers has configured the following Red Hat Linux public pool of servers:

```
server 0.rhel.pool.ntp.org
server 1.rhel.pool.ntp.org
server 2.rhel.pool.ntp.org
```

Tip: For more information about using NTP pool servers see the Network Time Protocol website.

- If you plan to change the default best practice of using the Cisco Vision Dynamic Signage Director server as the NTP source for DMPs, be sure that the following requirements are met:
 - You have configured the NTP host for the Cisco Vision Dynamic Signage Director server first.
 - You have upgraded the DMP firmware.

For more information about how to upgrade the DMP firmware, see the [Cisco Vision Software Installation and Upgrade Guide: Dynamic Signage Director](#) for your release.

How to Configure Cisco Vision Dynamic Signage Director Server System Settings

- For optimal synchronization, use the same NTP server that is configured for the Cisco Vision Dynamic Signage Director server. However, it is not required.
- The DMP must not reference an NTP server pool. If the Cisco Vision Dynamic Signage Director server references an NTP server pool (the default), then select a specific server from that same pool as the NTP server for the DMPs.
- Only IPv4 is supported for the NTP server address on the DMPs.
- The NTP server for the DMPs must not be a load-balanced server.
- The Cisco Vision Dynamic Signage Director network is configured to allow bidirectional transmission of UDP messages on port 123 for NTP messages.

UDP port 123 is used for communication between the Cisco Vision Dynamic Signage Director servers and NTP hosts, and the DMPs and NTP host (by default, this is the Cisco Vision Dynamic Signage Director server).

For a complete port reference for Cisco Vision Dynamic Signage Director servers, see the “Port Reference” module of the [Cisco Vision Software Installation and Upgrade Guide: Dynamic Signage Director](#) for your release.

Configuring the System Date and Time Using NTP on Cisco Vision Dynamic Signage Director Servers

When you install or upgrade the Cisco Vision Dynamic Signage Director, you need to configure the system date and time in the TUI. You also need to configure the time zone.

Note: Although you can manually configure the system date and time on your servers when necessary, this should be avoided for your production network.

- [Setting Up the NTP Source on Cisco Vision Dynamic Signage Director Servers, page 18](#) (required)
- [Configuring the Time Zone, page 19](#) (required)
- [Restarting the Cisco Vision Dynamic Signage Director Software, page 21](#) (required)
- [Configuring the Date and Time Manually, page 22](#) (if necessary)

Setting Up the NTP Source on Cisco Vision Dynamic Signage Director Servers

Note: Complete this task only if you do not want to use the default public pool of servers.

Standard NTP server configuration uses the word “server” followed by the Domain Name System (DNS) name or IP address of an NTP server. By default, the `ntp.conf` file on Cisco Vision Dynamic Signage Director servers has configured the following Red Hat Linux public pool of servers:

```
server 0.rhel.pool.ntp.org
server 1.rhel.pool.ntp.org
server 2.rhel.pool.ntp.org
```

For these servers to be used as a reference clock, they must be reachable from the Cisco Vision Dynamic Signage Director network.

If you want to use your own server, be sure to add it and comment out these default pool servers in the `ntp.conf` file. Otherwise, you do not need to do any further editing of the `ntp.conf` file in this task.

To set up the NTP host on Cisco Vision Dynamic Signage Director servers, complete the following steps:

1. From the TUI Main Menu, go to **System Settings > Date and Time Settings > Setup NTP Source**.

A confirmation screen to Configure NTP and edit the `ntp.conf` file is displayed.

2. To open the `ntp.conf` file for edit, press any key.

The `ntp.conf` file opens in the vi editor and the cursor is positioned at the end of the last configured NTP server line. If this is not the case, navigate to the server configuration section.

3. To enter INSERT line editing mode, type `i`.

The vi editor changes to INSERT mode.

4. If you have a server that you want to use as the reference clock source at your site, do the following:

- Add a line and type “**server** *ip-address*” or “**server** *dns-name*,” where *ip-address* or *dns-name* is replaced by the IP address or name of the NTP server that you want to configure.
- Go to the lines where the pool servers are configured and add a “#” sign in front to comment them out of the configuration as shown below:

```
#server 0.rhel.pool.ntp.org
#server 1.rhel.pool.ntp.org
#server 2.rhel.pool.ntp.org
```

5. To exit INSERT mode and return to vi command mode, press **Esc**.

6. To save your changes, type `:wq`.

The configuration is saved and the `ntpd` service is restarted. Verify that you see the “OK” confirmation that the `ntpd` has started.

7. To return to the Date and Time Settings menu, press any key.

Configuring the Time Zone

Configuring the time zone is required for the Cisco Vision Dynamic Signage Director server.

Note: Although there is an option to set the time zone in the Venues interface of the Control Panel on the Cisco Vision Dynamic Signage Director server, this option is informational only and is also used for proof-of-play reporting.

This section includes the following tasks:

- [Finding the Time Zone Code for System Configuration, page 19](#) (optional)
- [Configuring the System Time Zone, page 20](#) (required)

Finding the Time Zone Code for System Configuration

Use this task if you need to find out the time zone code to configure the server’s time zone information.

Note: This task provides information only and does not actually configure the time zone.

To find the time zone code for system configuration, complete the following steps:

- a. From the Date and Time Settings menu, do the following:
- b. Select **Change Timezone**.
- c. Type the number that corresponds to the applicable continent or ocean for the location of the server.
- d. Type the number that corresponds to the country.
- e. Type the number for the time zone (as applicable).
- f. When the confirmation of the time zone information that you configured is displayed, type **1** (for Yes) to accept your settings, or **2** (for No) to cancel ([Figure 5 on page 20](#)).

Figure 5 Time Zone Confirmation Prompt

```
The following information has been given:

    United States
    Pacific Time

Therefore TZ='America/Los_Angeles' will be used.
Local time is now:      Mon Feb 18 16:42:55 PST 2013.
Universal Time is now: Tue Feb 19 00:42:55 UTC 2013.
Is the above information OK?
1) Yes
2) No
#?
```

- g. After confirming Yes at the prompt, note the time zone string that is provided.

[Figure 6 on page 20](#) shows a sample time zone code for America/Los_Angeles.

Figure 6 Sample Time Zone Code

```
The following information has been given:

    United States
    Pacific Time

Therefore TZ='America/Los_Angeles' will be used.
Local time is now:      Mon Feb 18 16:56:47 PST 2013.
Universal Time is now: Tue Feb 19 00:56:47 UTC 2013.
Is the above information OK?
1) Yes
2) No
#? 1

You can make this change permanent for yourself by appending the line
    TZ='America/Los_Angeles'; export TZ
to the file '.profile' in your home directory; then log out and log in again.

Here is that TZ value again, this time on standard output so that you
can use the /usr/bin/tzselect command in shell scripts:
America/Los_Angeles
Press any key to return to the menu.
█
```

8. Press any key to return to the Date and Time Settings menu.
9. Configure the system time zone using the appropriate code for the server location. See [Configuring the System Time Zone, page 20](#).

Configuring the System Time Zone

Prerequisites

Before you configure the system time zone, you should know the following information:

- How to use vi editor commands.
- The time zone code for the server location. If you need to look up the time zone code, see [Finding the Time Zone Code for System Configuration, page 19](#).

Procedure

To configure the system time zone so that it persists after restart of the server, complete the following steps:

1. From the TUI Main Menu on the server, go to **System Settings > Date and Time Settings > Change System Timezone**.

Configuring the Date and Time Manually

Note: This task is provided as a precaution if you should find it necessary to manually set the system date and time. Manual date and time configuration should be avoided on a production system and NTP service used instead.

To configure the date and time manually, complete the following steps:

1. From the TUI Main Menu on the server, go to **System Settings > Date and Time Settings > Change Date and Time**.
2. At the confirmation prompt, type **Y** to continue.
3. Type the new date and time in the format: MMDDhhmm[[CC] YY] [.ss], where:
 - MMDDhhmm is required (MM is month, DD is day, hh is hour, and mm is minutes).
 - CC is the century (first 2 digits of the year) and is optional for use with YY. For example “20” in the year 2013.
 - YY is the last 2 digits of the year and is optional. For example “13” in the year 2013.
 - .ss is seconds and is optional.
4. Press any key to return to the Date and Time Settings menu.

Configuring NTP and PTP on the Series 2 and Series 3 Media Players

By default, both NTP and PTP services are automatically enabled for Series 2 and Series 3 media players. The Series 2 and Series 3 media players use PTP to achieve optimal synchronization. However, an NTP source also must be used to provide initial clocking to the devices that are elected PTP masters in the network.

This section provides information about the default settings and how to modify them. It includes the following tasks:

- [Restrictions for NTP and PTP on the Series 2 and Series 3 Media Players, page 22](#)
- [Guidelines for NTP and PTP on the Series 2 and Series 3 Media Players, page 23](#)
- [Modifying the Standard NTP and PTP Configuration on All Series 2 and Series 3s in the System, page 24](#) (optional)
- [Verifying PTP Operation for the Series 2 and Series 3 Media Player, page 26](#)

Restrictions for NTP and PTP on the Series 2 and Series 3 Media Players

Before you configure PTP on the Series 2 and Series 3 media players, consider the following restrictions:

- By default, PTP messages will not cross VLANs and PTP master candidates need to be identified for each VLAN and configured in the Management Dashboard.
- The system supports a configurable Precision Time Protocol (PTP) Time To Live (TTL) setting in the Management Dashboard. The PTP TTL specifies the number of VLANs that can be crossed for selection of a PTP master. The default value of 1 (recommended) means that each VLAN will elect its own PTP master.

Note: For ease of configuration for venues with multiple VLANs, the system is configured by default to list all Series 2 and Series 3 devices as eligible PTP master candidates. However, be aware that although this simplifies configuration, the time that it takes for the devices to arbitrate a master device in each network will vary, and depends on the number of eligible devices in each network.

- Content synchronization for video playback on the Series 2 and Series 3 media player relies on precise time across DMPs using PTP. If SV-4K devices are playing video and one of the devices reboots, the rebooting unit will restart video playback from the beginning and will only synchronize with the other players when the next item in the playlist is rendered.

- If Series 2 and Series 3 devices are participating in zone-based content synchronization for video walls, with some enhanced synchronization capability, the rebooting unit will synchronize with the current item being played by the device leader in the video wall. For more information, see “Working with Video Walls” in [Cisco StadiumVision Director Operations Guide](#).

Guidelines for NTP and PTP on the Series 2 and Series 3 Media Players

Before you configure NTP and PTP on the Series 2 and Series 3 media players, consider the following guidelines:

- For new installations of Cisco Vision Dynamic Signage Director, PTP is the default time source for the Series 2 and Series 3 media players, with NTP as the default time source for the elected PTP master.

NTP Guidelines

- Each Series 2 and Series 3 media player designated as PTP master (per VLAN) will use NTP as its time source. The other devices in the network operate using a PTP reference clock from the elected PTP master.
- When PTP is disabled (not recommended), all Series 2 and Series 3 devices use NTP to set their local clock.
Note: For synchronized video playback, NTP alone cannot be relied upon for Series 2 and Series 3 devices and PTP must be used.
- The default NTP synchronization interval with the host time server is one hour and is configurable.
- An NTP source must be configured in Cisco Vision Dynamic Signage Director. By default, the Cisco Vision Dynamic Signage Director server is configured as the Series 2 and Series 3 NTP host.

PTP Guidelines

- PTP version 2 is supported only for the Series 2 and Series 3 media players and applies globally to all devices in the Cisco Vision Dynamic Signage Director network when configured.
- PTP configuration includes a PTP domain and a set of master candidates:
 - PTP domain—Default is 0.
Be sure that this domain does not conflict with any other PTP domain (and multicast addressing) in use in your network, and revise as needed. See table “Global SV-4K and DMP-2K Settings—PTP Property Values” for more information.
 - PTP master candidates—Default is *.
This specifies that all Series 2 and Series 3 devices in the network are eligible as master candidates and will go through arbitration to designate a master for their respective subnets.
- If you revise the default PTP master candidates configuration, you must configure one or more Series 2 and Series 3 devices as master candidates in a semicolon-separated list of IP addresses for each VLAN.
A minimum of two master candidates per network is recommended.
- If there is an in-house PTP master for your network, leave the “PTP master candidates” property value blank. However, this configuration is only supported for venues without multiple subnets.

Modifying the Standard NTP and PTP Configuration on All Series 2 and Series 3s in the System

By default the NTP and PTP services are automatically enabled and configured for Series 2 and Series 3 media players. Use this task if you need to modify the default settings described in [Table 1 on page 24](#) and [Table 2 on page 25](#).

Table 1 Global SV-4K and DMP-2K Settings–PTP Property Values

Property (Registry key)	Description	Values
PTP domain (Globaldmpsetting.common.init.ptp.domain)	Domain number for the PTP network, which defines the multicast address for PTP communication.	For IEEE-1588 PTP, possible values are: 0 –(Default) 224.0.1.129 1 –224.0.1.130 2 –224.0.1.131 3 –224.0.1.132
PTP master candidates (Globaldmpsetting.common.init.ptp.master.host)	Eligible Series 2 and Series 3 devices for master candidate selection.	Possible values are: <ul style="list-style-type: none"> ■ *(Default). Wildcard pattern that specifies all Series 2 and Series 3 devices in the network as eligible PTP master candidates. ■ Semicolon-separated IPv4 addresses of Series 2 and Series 3 devices for each subnet. <p>Example: 10.0.0.3;10.0.0.4;192.168.0.5;192.168.0.6</p> <ul style="list-style-type: none"> ■ blank–Specifies that a PTP master source external to Cisco Vision Dynamic Signage Director is used. This configuration is only valid for a venue without devices in multiple subnets.
PTP time-to-live (Globaldmpsetting.common.init.ptp.ttl)	Number of VLANs that can be crossed for selection of a PTP master.	1 (Default) Note: Best practice is to retain the default value of 1 for election of a PTP master per video wall. With a TTL > 1, degradation in local video synchronization can occur.

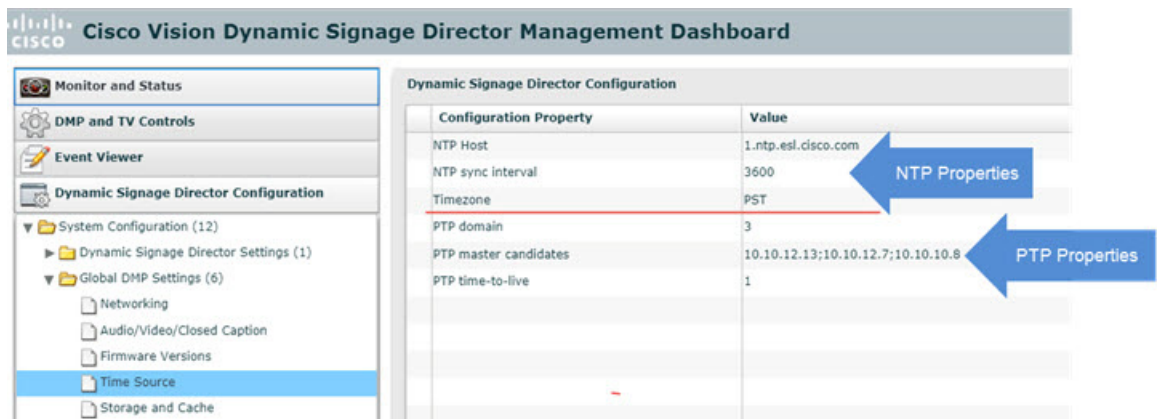
Table 2 Global SV-4K and DMP-2K Settings–NTP Property Values

Property (Registry Key)	Description	Values
NTP Host (Globaldmpsetting.common.deploy.ntpc.hostname)	IPv4 address of the NTP server.	Default–IP address of the Cisco Vision Dynamic Signage Director server.
NTP sync interval (Globaldmpsetting.common.deploy.ntpc.interval)	Number of seconds that the Series 2 and Series 3 waits before trying to synchronize its time with the configured NTP host.	3600 (Default)
Timezone (Globaldmpsetting.common.deploy.ntpc.timezone)	Code for the timezone to be used.	GMT (Default)

To modify the standard NTP and PTP configuration on all Series 2 and Series 3s, complete the following steps:

1. Log into the Cisco Vision Dynamic Signage Director server as an administrator.
2. Go to the **Management Dashboard**.
3. Go to **Dynamic Signage Director Configuration > System Configuration > Global DMP Settings > Time Source** (Figure 8 on page 25).

Figure 8 Global DMP Settings for NTP and PTP on the Series 2 and Series 3



4. (Optional) Change the global PTP properties as required for your network. Refer to Table 1 on page 24.
5. (Optional) Change the global NTP properties as required for your environment. Refer to Table 2 on page 25.
6. Click the disk icon to Save changes.
7. Reboot the Series 2 and Series 3 devices.

Verifying PTP Operation for the Series 2 and Series 3 Media Player

This section describes how to verify the PTP configuration and also the operation of PTP for your Series 2 and Series 3 devices.

To verify the PTP operation for the Series 2 and Series 3 media player, complete the following steps:

1. Open your browser and navigate to one of the DMPs:

`http://sv4k-ip-address/ptp.html`

2. Identify the PTP master by finding the unit that has an "offsetFromMaster" value of 0.0.

[Figure 9 on page 27](#) highlights the PTP master and shows a network where PTP is operating successfully with 12 members.

Figure 9 Successful PTP Clock Operation

PTP clock status

```

Status from local PTP:
sending: GET CURRENT_DATA_SET
90ac3f.ffe.038649-0 seq 0 RESPONSE MANAGMENT CURRENT_DATA_SET
  stepsRemoved 0
  offsetFromMaster 0.0 ←
  meanPathDelay 0.0

Status from remote PTP devices:
sending: GET CURRENT_DATA_SET
90ac3f.ffe.03863d-1 seq 0 RESPONSE MANAGMENT CURRENT_DATA_SET
  stepsRemoved 1
  offsetFromMaster 333.0
  meanPathDelay 12613.0
90ac3f.ffe.03863b-1 seq 0 RESPONSE MANAGMENT CURRENT_DATA_SET
  stepsRemoved 1
  offsetFromMaster -597.0
  meanPathDelay 13332.0
90ac3f.ffe.03863c-1 seq 0 RESPONSE MANAGMENT CURRENT_DATA_SET
  stepsRemoved 1
  offsetFromMaster -366.0
  meanPathDelay 13741.0
90ac3f.ffe.03863f-1 seq 0 RESPONSE MANAGMENT CURRENT_DATA_SET
  stepsRemoved 1
  offsetFromMaster 334.0
  meanPathDelay 12543.0
90ac3f.ffe.03863e-1 seq 0 RESPONSE MANAGMENT CURRENT_DATA_SET
  stepsRemoved 1
  offsetFromMaster 849.0
  meanPathDelay 13017.0
90ac3f.ffe.038641-1 seq 0 RESPONSE MANAGMENT CURRENT_DATA_SET
  stepsRemoved 1
  offsetFromMaster -323.0
  meanPathDelay 13228.0
90ac3f.ffe.03864f-1 seq 0 RESPONSE MANAGMENT CURRENT_DATA_SET
  stepsRemoved 1
  offsetFromMaster 239.0
  meanPathDelay 12560.0
90ac3f.ffe.038645-1 seq 0 RESPONSE MANAGMENT CURRENT_DATA_SET
  stepsRemoved 1
  offsetFromMaster 90.0
  meanPathDelay 12642.0
90ac3f.ffe.038647-1 seq 0 RESPONSE MANAGMENT CURRENT_DATA_SET
  stepsRemoved 1
  offsetFromMaster 1328.0
  meanPathDelay 13542.0
90ac3f.ffe.03863a-1 seq 0 RESPONSE MANAGMENT CURRENT_DATA_SET
  stepsRemoved 1
  offsetFromMaster 33.0
  meanPathDelay 14068.0
90ac3f.ffe.038646-1 seq 0 RESPONSE MANAGMENT CURRENT_DATA_SET
  stepsRemoved 1
  offsetFromMaster -1768.0
  meanPathDelay 14699.0

```

Configuring Multicast Ports for Cisco Vision Dynamic Signage Director

This section includes the following topics:

- [Information about Multicast Support in Cisco Vision Dynamic Signage Director, page 27](#)
- [Prerequisites for Configuring Multicast Ports in Cisco Vision Dynamic Signage Director, page 31](#)
- [How to Configure Multicast Ports in Cisco Vision Dynamic Signage Director, page 31](#)

Information about Multicast Support in Cisco Vision Dynamic Signage Director

This section includes the following topics:

- [HDMI-In Encoding on the SV-4K and CV-UHD Media Players to Stream Video as a Channel, page 28](#)
- [Per-Script Multicast Optimization, page 28](#)

- [Multicast Registry Keys in Cisco Vision Dynamic Signage Director, page 29](#)

HDMI-In Encoding on the SV-4K and CV-UHD Media Players to Stream Video as a Channel

In Release 4.1 and later releases, Cisco Vision Dynamic Signage Director supports streaming video from a laptop or other supported device connected to the HDMI-In port on the SV-4K or CV-UHD media players to be played as a multicast-based channel in Cisco Vision Dynamic Signage Director.

The allowable multicast range to use for this feature in the Connected Venue (Connected Stadium) network is 239.193.20.0/24.

Note: If you want to maintain privacy of channels, create a DMP-encoded channel per suite with a unique multicast address (from 239.193.20.0/24 range), and create a separate channel guide per suite. For example, if you have 10 suites—create 10 separate DMP-encoded channels with unique multicast addresses, create 10 different channel guides for each DMP-encoded channel, and assign each suite to a different channel guide.

For more information about configuring this feature, see the [Cisco Vision Director Operations Guide](#).

Per-Script Multicast Optimization

In Cisco StadiumVision Director Release 3.2 and later releases, the original Multicast Optimization introduced in Release 3.1 is replaced by Per-Script Multicast Optimization (for up to 20 different scripts) to reduce the number of multicast messages that each DMP must process.

Per-Script Multicast Optimization is designed to reduce the load on DMPs when the following conditions are present in Cisco Vision Director:

- More than one event script is run simultaneously in a venue.

The scripts can be running across multiple venues or scripts running in a single venue.

- The External Content Integration feature is used, which sends multiple messages to the DMPs in a script.

[Table 3 on page 28](#) provides a summary of the two different multicast optimization features supported in Cisco Vision Dynamic Signage Director.

Table 3 Summary of Multicast Optimization Features in Cisco Vision Dynamic Signage Director

Feature Name	Release	Scope	Remote Servers Required	Default
Multicast Optimization ¹	3.1 only	Per Site	Yes	Automatic when multi-venue support is enabled.
Per-Script Multicast Optimization	3.2 and later	Per Script (20 maximum) ²	No	Disabled.

1. For information about per-site multicast optimization in Cisco StadiumVision Director Release 3.1, see the “Multicast Optimization for Remote Venues” topic in the “[Configuring Cisco StadiumVision Director for Multiple Venue Support](#)” module of the [Cisco StadiumVision Director Server Administration Guide, Release 3.1](#).
2. If you are running more than 20 scripts, then the first 20 scripts operate using per-script multicast channels, and the additional scripts are run over the global multicast host port.

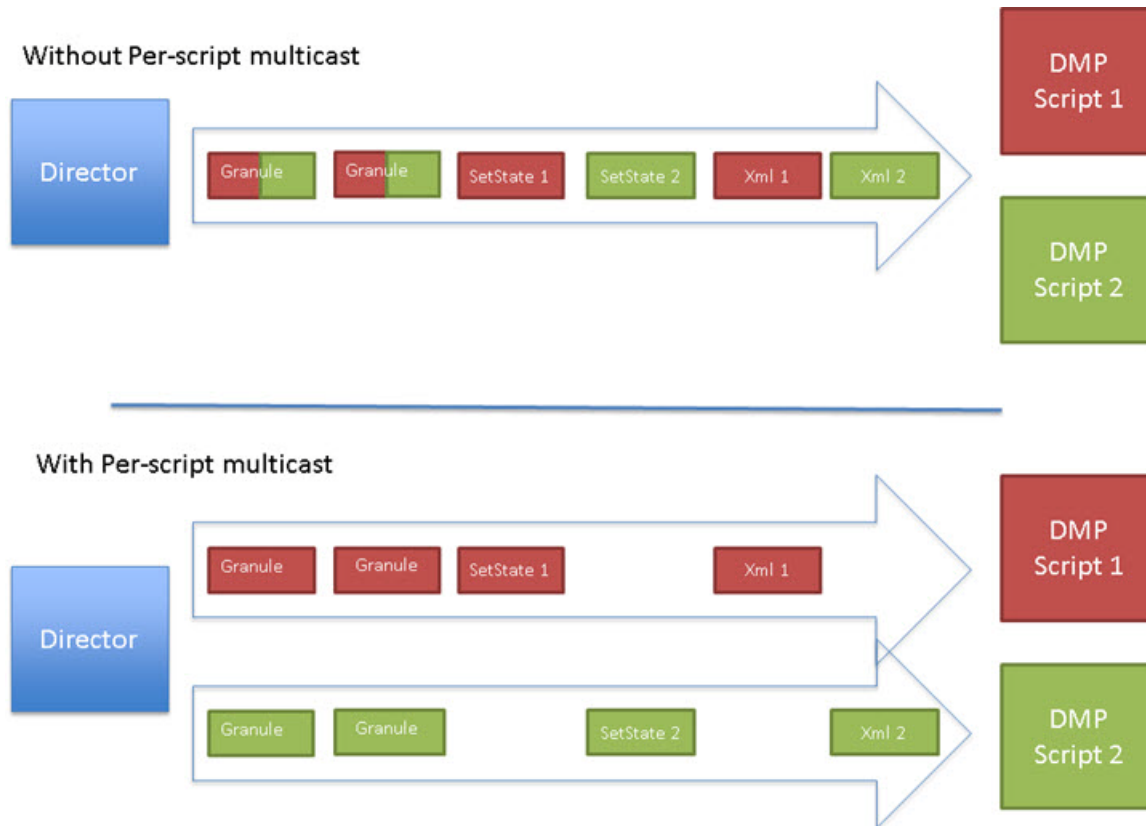
Benefits of Per-Script Multicast

In releases of Cisco StadiumVision Director 3.1 and earlier, the server uses a single multicast channel for all DMPs. In Release 3.2 and later, you can configure multiple multicast channels, over which the server sends only the multicast messages needed for a particular event script for up to 20 scripts.

If you are running more than 20 scripts, then the first 20 scripts operate using per-script multicast channels, and the additional scripts are run over the global multicast host port.

Figure 10 on page 29 shows this message separation. Each DMP goes from seeing four packets to seeing two. More importantly, each DMP now only has to process one XML payload, which is important when the XML payloads are sizeable.

Figure 10 Multicast Messaging With and Without Per-Script Multicast Optimization



All DMPs, including those associated with a remote site, listen on these per-script multicast channels.

For messages that apply to multiple event scripts, the message is duplicated and sent to each multicast channel. Therefore, this feature can increase the load on Cisco Vision Dynamic Signage Director servers (increasing the number of messages sent and copying of messages) as a tradeoff for reducing the number of messages seen and processed by DMPs. However, this load is expected to be negligible.

Multicast Registry Keys in Cisco Vision Dynamic Signage Director

Cisco Vision Dynamic Signage Director uses multicast messages for DMP control-plane operation. Cisco Connected Venue (Connected Stadium) network design assigns the following multicast group addresses for use by Cisco Vision Dynamic Signage Director:

- 239.193.0.0/24—For control communication
- 239.192.0.0/24—For video communication (This network should be avoided for the multicast configuration described in this module.)

Multicast addressing is configured using registry keys from the Cisco Vision Dynamic Signage Director Management Dashboard.

Table 4 on page 30 describes the registry keys in Cisco Vision Dynamic Signage Director that control the multicast configuration.

Note: The default PTP domain 0 uses multicast address 224.0.1.129. For more information, see Table 1 on page 24.

Table 4 Multicast Registry keys in Cisco Vision Dynamic Signage Director

Registry Key	Default Value	Description
Globaldmpsetting.sv4k.init.dmpsync.multicast.address	239.193.0.253	Sets the global multicast address used for zone-based synchronization on the Series 2 and Series 3.
Globaldmpsetting.sv4k.init.dmpsync.multicast.port	50001 Note: The system automatically uses an additional port based on this default (default + 1) for secondary video. In the case of the 50001 default, 50002 is also reserved for secondary video use.	Sets the default port for the primary video for zone-based synchronization multicast address on the Series 2 and Series 3.
MulticastHostPort	239.192.0.254:50001 Caution: This default multicast address should be changed after installation to use the 239.193.0.0/24 address range, or the network that is configured in your Cisco Connected Stadium network for Cisco Vision Dynamic Signage Director control.	Sets the global multicast address and port for Cisco Vision Dynamic Signage Director.
transport.dynamic.enable	<ul style="list-style-type: none"> ■ False (for upgraded servers) Per-Script Multicast Optimization is disabled and the Cisco Vision Dynamic Signage Director server sends all communication over the MulticastHostPort address directly to all DMPs, including all remote DMPs. <ul style="list-style-type: none"> ■ True (for new installations) 	Enables and disables Per-Script Multicast optimization.
transport.dynamic.send_range	50080-50099 If the MulticastHostPort registry key is 239.193.0.254:50001, then 239.193.0.254:50080-239.193.0.254:50099 is used as the range of Global hostports for the running scripts.	Specifies the range of ports for Per-Script Multicast Optimization. These ports are used with the network specified in the MulticastHostPort registry key, to define a range of additional global hostports to be assigned for running scripts.

Prerequisites for Configuring Multicast Ports in Cisco Vision Dynamic Signage Director

Before you configure multicast ports, be sure that the following requirements are met:

- Be sure that you understand the multicast addressing in use for all areas of your Cisco Vision Dynamic Signage Director network, including Cisco Connected Venue and Cisco Vision Mobile networks. Confirm that there are not any multicast address/port overlaps.

Caution: Because of the large number of ports that per-script multicast configuration requires, and the possibility for hard-to-diagnose failures if video is routed to a DMP's control channel (which can occur when the port numbers are the same and even if the group/host portion is different), it is critical to verify that the port ranges you plan to use are not used by any other source of multicast in the network.
 - For more information about the recommended multicast addressing for the Cisco Connected Venue network, see the *Cisco Connected Stadium Design Implementation Guide* available to authorized partners and from your Cisco Systems representative.
- The network is properly configured to route the global multicast host port to be visible for all DMPs in the Cisco Vision Dynamic Signage Director network, including those at remote venues and associated to venues in a multi-venue environment.

How to Configure Multicast Ports in Cisco Vision Dynamic Signage Director

This section includes the following tasks:

- [Configuring the Global Multicast Host Port in Cisco Vision Dynamic Signage Director, page 31](#) (required)
- [Configuring Per-Script Multicast in Cisco Vision Dynamic Signage Director, page 31](#) (recommended)
- [Configuring Multicast Support for Zone-Based Content Synchronization for the Series 2 and Series 3, page 33](#) (optional)

Configuring the Global Multicast Host Port in Cisco Vision Dynamic Signage Director

The global multicast host port is used by Cisco Vision Dynamic Signage Director to send messages to DMPs when they are not part of a script, when per-script multicast is disabled, or when the number of scripts running exceeds to configured maximum of per-script multicast ports.

It is configured in the “MulticastHostPort” registry key in the Management Dashboard.

Note: The default value currently uses the address 239.192.0.254:50001 and should be changed to a network address in the range 239.193.0.0/24.

To verify or configure the multicast addressing for Cisco Vision Dynamic Signage Director, complete the following steps:

1. From the Management Dashboard, select **Tools > Advanced > Registry**.
2. Scroll to the “MulticastHostPort” registry key in the Parameters list and confirm the entry for the registry.
3. Click on the value field and specify a multicast address in the range 239.193.0.0/24 and port number.

Note: Be sure to use the value that is configured in your Cisco Connected Venue network for Cisco Vision Dynamic Signage Director control messages and include the :port. The recommended default is :50001.

4. Click **Apply**.

Configuring Per-Script Multicast in Cisco Vision Dynamic Signage Director

By default, Per-Script Multicast Optimization is disabled and the Cisco Vision Dynamic Signage Director server sends all communication over the MulticastHostPort address directly to all DMPs, including all remote DMPs.

To configure per-script multicast, complete the following steps:

1. From the Management Dashboard, select **Tools > Advanced > Registry**.
2. To enable per-script multicast, change the values of the following registry keys:
 - **transport.dynamic.enable**—Specify a value of **true**.
 - **transport.dynamic.send_range**—(As Required) Change the range of ports to comply with your network configuration. The default is 50080-50099.

Note: Be sure that these ports do not overlap with other multicast ports in use on your network.
3. Click **Apply**.
4. Reload the Flash template on all DMPs:
 - a. From the DMP and TV Controls dashboard drawer, navigate to and select the following command: **DMP and TV Controls > DMP Install > Stage Template**.
 - b. Select all of the DMP devices where the command should be applied.
 - c. Click the Play button to run the command on the selected devices.
5. To verify the configuration:
 - a. Start and stop event scripts and change states.
 - b. Verify that the multicast port that the DMP is listening on is one of the per-script ports (50080-50099 by default), rather than the global multicast hostport (50001).

If the scripts do not start and stop, see [Troubleshooting Per-Script Multicast Configuration, page 32](#).

Troubleshooting Per-Script Multicast Configuration

This section includes information about troubleshooting the following behaviors when per-script multicast optimization is enabled:

- [Scripts Unable to Start or Stop, page 32](#)
- [DMPs Rebooting, page 33](#)

Scripts Unable to Start or Stop

Verify that the multicast packets are reaching the DMPs using any or all of the following methods:

- Look at the `sv_msg_mcast_trace.log` available from the Troubleshooting menu of the TUI for Cisco Vision Dynamic Signage Director in the Control logs.
- Use a packet sniffer device at Cisco Vision Dynamic Signage Director and/or at the DMP.
- Inspect the multicast configuration of the Cisco Connected Venue switch by turning on debug for multicast group subscriptions.

Tip: It is valuable to know the multicast group/port that a specific DMP should be listening on. This can be validated using the `dmpconfig` debug feature, by going to the URL:

http://svd-ip:8080/StadiumVision/dmpconfig/000000000000?ipaddr=*x.x.x.x*,

where *x.x.x.x* is the IP address of the DMP to be debugged. In the XML output provided, you will see the multicast IP address and port in use.

What To Do Next

DMPs Rebooting

DMPs rebooting or becoming unresponsive while per-script multicast is enabled is most likely due to some multicast video port overlap with the ports used for multicast control.

To diagnose this condition:

- Inspect all multicast port numbers in the configuration to investigate any multicast group/port overlaps.
- Using a packet sniffer, inspect network traffic on a separate box and via port span rather than on a DMP.

Configuring Multicast Support for Zone-Based Content Synchronization for the Series 2 and Series 3

Zone-based content synchronization provides enhanced recovery for video walls if an Series 2 and Series 3 reboots during the running of a playlist. Zone-based video wall synchronization is an alternative form of synchronization available for devices participating in a video wall. It makes use of a mechanism native to the devices that helps a group of media players stay in content sync with a leader device over multicast.

The general guideline is to use zone-based video wall synchronization for dedicated video walls that are playing video content longer than 15 minutes. While you can use this form of synchronization for all video walls, the synchronization benefit is best seen with longer-playing video wall content.

The default multicast address and ports are automatically configured to support zone-based content synchronization for the Series 2 and Series 3 upon installation of the Cisco Vision Dynamic Signage Director software; however, the feature is not enabled by default.

Use this task to change the default multicast values as needed, when you assess your system-wide multicast addressing needs.

Note: By default, zone-based content synchronization is not enabled. For more information, see the “Working with Video Walls” section of the [Cisco Vision Director Operations Guide](#).

To configure multicast support for zone-based content synchronization for the Series 2 and Series 3, complete the following steps:

1. From the Management Dashboard, go to **Dynamic Signage Director Configuration > System Configuration > Global DMP Settings > Networking**.
2. Verify that the following default values for the following properties are compatible for your network, and change as required:
 - **Content sync multicast address**—239.193.0.253
 - **Content sync multicast port**—50001
3. Save your changes.

What To Do Next

After you have configured the system settings for your Cisco Vision Dynamic Signage Director servers, do the following:

- Configure the backup environment between your primary and secondary servers. For more information, see [Backing Up and Restoring Cisco Vision Dynamic Signage Director Servers, page 63](#).
- For more information about configuring Cisco Vision Dynamic Signage Director to support multiple venues, see [Configuring Cisco Vision Dynamic Signage Director for Multiple Venue Support, page 35](#).

What To Do Next



Configuring Cisco Vision Dynamic Signage Director for Multiple Venue Support

First Published: 2017-11-15

A centralized server site can be deployed with multiple remote sites in a multi-venue architecture. This document is intended for Cisco Vision Dynamic Signage Director administrators and describes how to enable and manage multiple venue support.

Contents

- [Prerequisites for Configuring Multiple Venue Support, page 35](#)
- [Restrictions for Configuring Multiple Venue Support, page 35](#)
- [Information About Configuring Multiple Venue Support, page 36](#)
- [How to Configure Multiple Venue Support, page 39](#)
- [How to Migrate Deployed Devices From a Single Venue to a Multiple Venue System, page 45](#)

Prerequisites for Configuring Multiple Venue Support

Before you configure multiple venue support, be sure that the following requirements are met:

- You have read [Cisco Vision Dynamic Signage Director On-Premise Architecture Overview, page 5](#).
- You understand the deployment of zones, groups and locations and the use of playlists and scripts in Cisco Vision Dynamic Signage Director.
- The centralized Cisco Vision Dynamic Signage Director server is installed with a minimum of Release 3.1.
- You have planned the configuration for any new or changes to existing Locations. For existing Locations be sure that you are aware of current group/zone associations that will be disabled once you reassign an existing Location to a specific venue.

Restrictions for Configuring Multiple Venue Support

Before you configure Cisco Vision Dynamic Signage Director for multiple venue support, be sure that you consider the following restrictions:

- Any remotely-located DMPs are controlled by the central Cisco Vision Dynamic Signage Director server.
- The PTP master for DMP time service must be co-located with those remote DMPs and on the same VLAN.
- Venue objects (such as locations, playlists, and scripts) are limited to a single-venue association, except for users who are assigned to the role of Venue Operator.

Caution: Once an existing Location is reassigned to a specific venue, any previous group/zone associations will be disabled and the Location will need to be reassigned to groups/zones.

- Only Venue Administrators or Venue Operators can be associated to one or more venues.
- Only certain areas of the Cisco Vision Dynamic Signage Director software are *venue aware*, which means that certain roles can apply venue-specific scope of control using the venue selector. These areas include:
 - Command Center Monitoring
 - Control Panel > Control
 - Control Panel > Content

Note: External content, channels, and Dynamic Menu Board (DMB) content items are global to all venues. Therefore, these global content items also can be deleted by a venue administrator.

- Control Panel > Schedule
- Management Dashboard

For information about specific access allowed by user role, see [Table 2 on page 60](#).

Note: The following areas of the Control Panel > Setup are not directly venue-aware using the venue selector, but objects defined there can have a venue-specific relationship:

- Users—You can define all Users under Control Panel > Setup, but you can only associate venues to Venue Administrators or Venue Operators under the Venues tab. Therefore, the Users interface is not venue aware.
- Zones & Groups—Zones and groups inherit their venue association through the Location. Locations are associated to venues under the Venues tab by the administrator.
- Triggers—Triggers can be applied to venue-associated scripts, but the Triggers interface itself is not venue aware, and all defined triggers in Cisco Vision Dynamic Signage Director are global in scope.
- Playlists imported using the Media Planner Import API need to be manually assigned to venues after import into Cisco Vision Dynamic Signage Director.

Caution: Cisco Vision Dynamic Signage Director does not support disabling of multiple venue support (set the “Multiple Venue Enabled?” property to false) after you have enabled it and associated objects.

Information About Configuring Multiple Venue Support

This section includes the following topics:

- [Role-Based Access Control for Hierarchical Management of Multiple Venues, page 36](#)
- [Understanding Venue Association, page 38](#)
- [Understanding Scripts and Staging Behavior in a Multi-Venue Environment, page 38](#)

Role-Based Access Control for Hierarchical Management of Multiple Venues

Cisco Vision Dynamic Signage Director Release 5.0 introduces a new role of Venue Administrator.

For more information about user management and Role-Based Access Control (RBAC), see [User Management in Cisco Vision Dynamic Signage Director, page 55](#).

Administrator

The Cisco Vision Dynamic Signage Director administrator can perform all functions related to venue management.

Most of the configuration management for multiple venue support resides only with the Cisco Vision Dynamic Signage Director administrator role, which includes the addition of the following functions:

- Enabling Cisco Vision Dynamic Signage Director for multiple venue support.
- Creating venues in Cisco Vision Dynamic Signage Director.
- Creating users with role of Venue Administrator and Venue Operator.
- Capability for associating any venues to users, locations, content, playlists, and scripts.

Content Manager

In a multi-venue architecture a Content Manager can perform all of the same functions as within a standard Cisco Vision Dynamic Signage Director environment, with the addition of the following capabilities:

- Selecting the venue scope from the Content and Schedule screens in Control Panel.
- Importing content to be associated with one or more venues by using venue tags.
- Creating playlists and scripts to be associated with the currently selected venue scope or all venues.

Note: Content Managers can only create new objects with venue assignment based on the currently selected venue in the venue selector. To reassign an object to a different venue, the Content Manager must remove the object and add again.

Venue Administrator

The Venue Administrator role was introduced in Cisco Vision Dynamic Signage Director Release 5.0 and provides limited permissions at the venues authorized by the central Administrator for that user, for the following areas of Cisco Vision Dynamic Signage Director:

- Command Center Monitoring
- Control Panel—Content, Control (Script control and Staging), Schedule.
- Management Dashboard—Read-only access with limited command support.
- Setup—Devices (Display specifications only); Read-only access to Zones & Groups, Channels, Luxury Suites.

Venue Operator

The Venue Operator role is based on a subset of Event Operator and Help Desk roles, with the added functionality of venue-specific scope of control. The Venue Operator role supports the following capabilities:

- Changing the user password in Control Panel.
- Selecting venue scope for the venues for which permissions are granted.
- Viewing and monitoring information on the Management Dashboard with read-only access to the venues for which permissions are granted.
- Executing scripts and related state functions during an event at the venues for which permissions are granted.
- Running CCM.

Other Legacy RBAC Roles

Legacy RBAC roles (roles that were available in releases prior to Cisco StadiumVision Director Release 3.1) can perform all of the same functions as within earlier Cisco Vision Dynamic Signage Director software releases.

Note: In a multi-venue architecture an Event Operator can perform all of the same functions as within a standard Cisco Vision Dynamic Signage Director environment. The Event Operator role is not venue aware. To support venue-specific scope of control for scripts, use the new Venue Operator role.

Understanding Venue Association

A centralized Cisco Vision Dynamic Signage Director site with multiple remote sites (venues) supports the following functionality:

- Association of venues to Users, Locations, Playlists, and Scripts (referred to collectively as *venue objects*).
- Inheritance of venue association from Locations for Groups, Zones, and Luxury Suites.

Tip: You can use the Bulk Administration Tool (BAT) to associate multiple locations to a venue.

Understanding Scripts and Staging Behavior in a Multi-Venue Environment

This section provides information about scripts that you should be aware of when implementing them in a multi-venue environment.

Script Best Practices

When configuring scripts in a multi-venue environment, consider the following best practices:

- Configure scripts to control only a single venue.
- When creating venue-specific scripts, use the following process:
 - a. Create the script first without any actions—Name it and save it.
 - b. Assign the script to the venue.
 - c. Edit the script to assign it to zones/groups.
 - d. Use playlists that belong to the same venue.
 - e. Edit the script to further define states.
- Be sure that scripts that are intended to run at a remote site are not also being run on any non-site DMPs.
- For optimal operation, avoid running multiple event scripts to the same DMPs at a site.

Note: If you move a script assignment from one venue to another, be aware that the zones/groups/playlists might still be associated with the old venue until they are manually reassigned. If a script is part of one venue and zones/groups/playlists are part of another venue, then the script will not start.

Script Staging Behavior

In Cisco Vision Dynamic Signage Director, script staging is always serialized. For example, if a manual staging job is running, a script-initiated staging job will begin after the manual staging has completed. The scripts will not start at the same time.

In the case of content replacement, content staging happens right away. If current staging is going on, content replacement staging will go into the queue. The DMP will play old content until confirmation of successful staging occurs, so there could be some time delay.

How to Configure Multiple Venue Support

This section includes the following tasks:

- [Enabling Multiple Venue Support in Cisco Vision Dynamic Signage Director, page 39](#) (required)
- [Adding Venues to Cisco Vision Dynamic Signage Director, page 40](#) (required)
- [Associating Venues with Cisco Vision Dynamic Signage Director Objects, page 41](#) (required)
- [Removing Venues From Cisco Vision Dynamic Signage Director, page 43](#) (optional)
- [Selecting Venue Scope, page 44](#) (optional)
- [Monitoring Venues From the Management Dashboard, page 44](#) (optional)

Enabling Multiple Venue Support in Cisco Vision Dynamic Signage Director

By default, Cisco Vision Dynamic Signage Director is not configured for multi-venue deployment. To support Cisco Vision Dynamic Signage Director with a centralized server and remote sites, you must configure the Multiple Venue Configuration property, which will set the corresponding registry key. Once this registry key is set, it will be preserved during an upgrade.

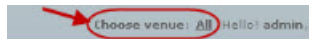
Caution: Cisco Vision Director does not support disabling of multiple venue support (set the “Multiple Venue Enabled?” property to false) after you have previously enabled it and associated objects. In other words, do not toggle between enabling multiple venue support and disabling it.

To enable multiple venue support in Cisco Vision Dynamic Signage Director:

1. Log into Cisco Vision Dynamic Signage Director as an administrator.
2. From the main menu, click **Management Dashboard**.
3. Go to **Dynamic Signage Director Configuration > Multiple Venue Configuration**.
4. Set the **Multiple Venue Enabled?** property value to “true.”
5. Click the Refresh icon to update property values.

The multiple venue management functions are enabled in Cisco Vision Dynamic Signage Director and the registry key named “**multiVenueDeployment**.”

6. Click **Save**.
7. Confirm that the “**Choose venue:**” control appears in the upper right corner of the Management Dashboard window.



8. Go to **Control Panel > Setup** and confirm that the Venues tab is available.

Tip: If you already had the Control Panel open before enabling multiple venue support, refresh the browser to display the Venues tab.

Adding Venues to Cisco Vision Dynamic Signage Director

After you enable multiple venue support in Cisco Vision Dynamic Signage Director, you can add remote sites as venues in the Control Panel.

To add venues in Cisco Vision Dynamic Signage Director:

1. Log into Cisco Vision Dynamic Signage Director as an administrator.
2. From the main menu, click the **Event Management > Control Panel**.
3. Go to **Setup > Venues**.
4. Click the plus (+) icon (Figure 1 on page 40).

Figure 1 New Venue Intro Panel

5. (Required) In the Name box, type a unique and identifiable name for the venue. “new venue” is the default.

6. (Required) In the Time zone box, click the arrow to open the drop-down box and select the time zone for the remote site.

Note: This option is informational only and for proof-of-play reporting.

7. Set Default Content URL (landscape).

8. Set Default Content URL (portrait).

Associating Venues with Cisco Vision Dynamic Signage Director Objects

You can associate venues with Locations, Playlists, Scripts, and Users in Cisco Vision Dynamic Signage Director. Only the administrator can perform associations for all of these objects for all venues using the Venues tab in the Control Panel Setup screen.

After the initial multiple venue configuration and association is completed by the Cisco Vision Dynamic Signage Director administrator, other roles (Content Manager, Venue Administrator, and Venue Operator) can use the venue selector in Cisco Vision Dynamic Signage Director for their authorized functional areas of the interface to select their venue scope of control. Any related tasks will be based on that selected venue scope (All Venues or a specific venue).

This section includes the following topics:

- [Guidelines for Associating Venues, page 41](#)
- [Venue Association Procedure, page 41](#)
- [Troubleshooting Venue Association Conflicts, page 42](#)

Guidelines for Associating Venues

Before you associate venues in Cisco Vision Dynamic Signage Director, be sure that you understand the following guidelines:

- Each object is limited to a single-venue association, except for users.
- Only users with the assigned role of Venue Administrator or Venue Operator can be assigned to one or more venues by the administrator.
- Only the following roles can see the venue selector in the Cisco Vision Dynamic Signage Director interface and use it to select the venue scope of control for their authorized areas:
 - Administrator
 - Content Manager
 - Event Operator
 - Venue Administrator
 - Venue Operator

Caution: If a location is already in a group/zone configuration, it will be forcibly removed from those groups and zones when you either associate or disassociate the location from a venue. Scripts might fail to start on those endpoints because they are not part of the group anymore.

- Refer to [Script Best Practices, page 38](#) for guidelines on script creation and association.

Venue Association Procedure

To associate venues with Cisco Vision Dynamic Signage Director objects:

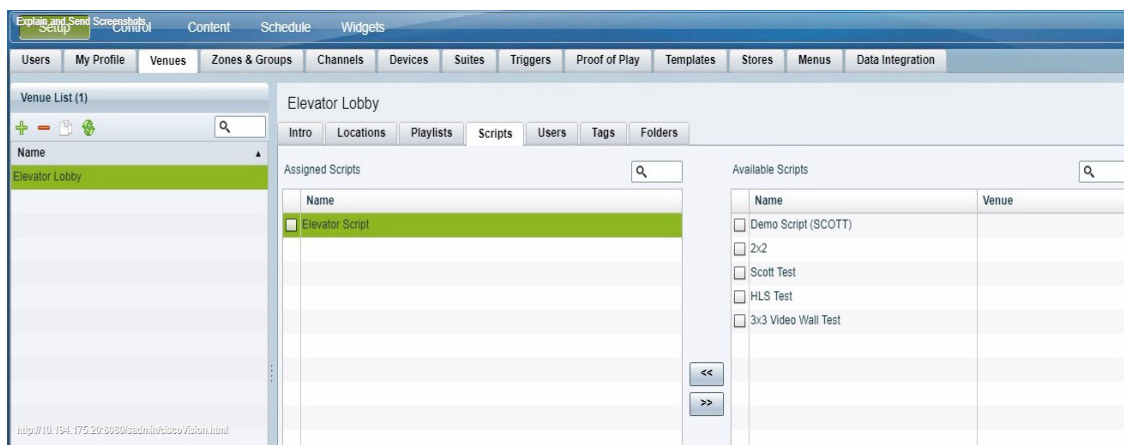
1. Log into Cisco Vision Dynamic Signage Director as an administrator.
2. From the main menu, click **Control Panel**.
3. Go to **Setup > Venues**.
4. In the Venue list, click the name of the venue that you want to associate.

How to Configure Multiple Venue Support

5. Do the following to assign object types to the selected venue:
 - a. Click **Locations, Playlists, Scripts, Users, Tags, or Folders**.
 - b. In the “Available” box, select the name of the location, playlist, script, user, tag, or folder that you want to associate.

Tip: You can multi-select objects. Click the checkbox and Ctrl+Click to select additional objects.
 - c. Click the << button.

The object name is added to the Assigned box.
 - d. Repeat from Step a. on page 42 or Step b. on page 42 for as many objects as you need to associate.

Figure 2 Associate Scripts to Venue Example

6. (Optional) To remove an assigned object, select the name of the object in the “Assigned” box and click the >> button.
7. When associations are complete, click **Save**.

Troubleshooting Venue Association Conflicts

When you attempt to associate objects to venues, certain conditions can cause the system to provide you with a warning about objects that are not optimally configured to be associated to the venue, such as a Location already being associated to a group or zone in another venue. The warning message identifies the objects, which allows you to do one of two things:

- Click **Close** to go back to the Cisco Vision Dynamic Signage Director configuration to confirm that the object best follows venue association guidelines and note or change the configuration.
- Click **Force** to permit the system to attempt to make the requested association for the objects in conflict.

Note: The Force button might not work for all associations. It is important to understand that an attempt is made by the system to force the specified user action but several factors influence its success. For best results, read the error message and see what objects are identified as being in conflict with the requested action and take corrective steps to avoid the conflict within Cisco Vision Dynamic Signage Director.

Figure 3 on page 43 shows an example of an error message that can appear when you attempt to associate venue objects and there are conflicts within the Cisco Vision Dynamic Signage Director configuration. Any other objects not in conflict will be associated to the venue as requested.

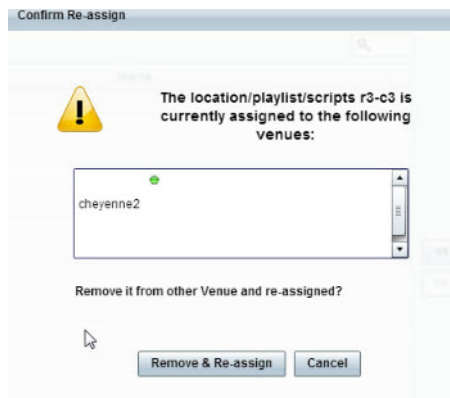
Figure 3 Venue Association Conflict Message Example



Figure 4 on page 43 shows an example of a venue assignment conflict message where the location, playlist, or script that you tried to assign to a venue is identified as already assigned to another venue. The original venue assignment is displayed in the message (“Cheyenne2” in this example). You can do one of two things:

- Click **Remove & Re-assign** to proceed with the new venue assignment and remove the specified object from its current venue assignment.
- Click **Cancel** to retain the original venue assignment and return to Cisco Vision Dynamic Signage Director.

Figure 4 Confirm Object Reassignment Message Example



Removing Venues From Cisco Vision Dynamic Signage Director

To remove a venue from Cisco Vision Dynamic Signage Director:

1. Log into Cisco Vision Dynamic Signage Director as an administrator.
2. From the main menu, click **Control Panel**.
3. Go to **Setup > Venues**.
4. Remove association from all objects that are linked to the venue that you want to remove.
5. In the Venue List box, select the venue that you want to remove.
6. Click the delete icon (red dash).

Selecting Venue Scope

You can select venue scope in the Control Panel and in the Management Dashboard. However only certain areas of the Control Panel interface are venue aware. Once you have enabled the software for multiple venue support and added new venues in the Control Panel, you can use the venue selector in those areas that are venue aware.

Venue status is indicated in the venue selector using a radio button that is colored red to indicate that the venue is disabled and green to show that the venue is online.

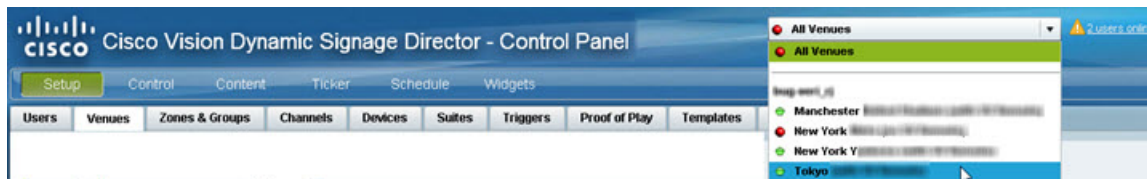
Caution: Take note that the venue selector will show the last venue that you selected, but the scope will not be limited to the selected venue if you are not in a venue-aware area of the interface. The global scope will apply (All Venues). For more information, see [Understanding Venue Association, page 38](#).

To select venue scope:

1. Log into Cisco Vision Dynamic Signage Director as an administrator, content manager, venue administrator, or venue operator.
2. Go to the Control Panel (or Management Dashboard, as allowed by your role).
3. At the top of the window, look for the venue selector drop-down box.

Figure 5 on page 44 shows an example of the venue selector in the Cisco Vision Dynamic Signage Director Control Panel.

Figure 5 Venue Selector Drop-Down Box in the Control Panel



4. Do one of the following:
 - To apply the scope of operation to a specific venue, select the name of the venue in the drop-down box.
 - To apply the scope of operation to all venues, select All Venues.
5. Continue to the Control Panel area that you want to configure.

Monitoring Venues From the Management Dashboard

You can monitor the status of remote devices for selected venues from the Management Dashboard.

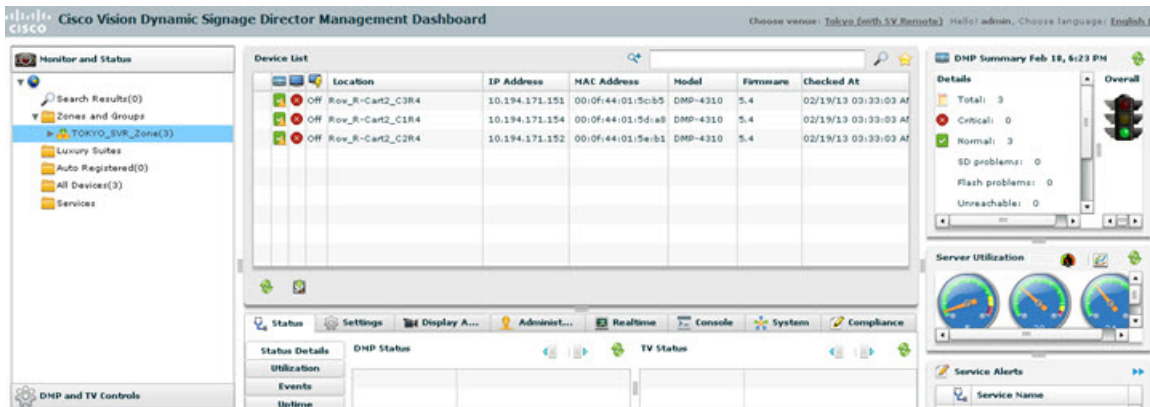
Traffic monitoring of remote DMPs in the Management Dashboard is performed using unicast messaging, so multicast optimization does not apply.

To monitor venues from the Management Dashboard:

1. Log into the Cisco Vision Dynamic Signage Director server as an administrator.
2. Go to the Management Dashboard.
3. At the top of the window, select the venue whose devices you want to monitor.
4. Click **Monitor and Status**.
5. Select the area that you want to get information about.

Figure 6 on page 45 shows information about zones in the Tokyo venue.

Figure 6 Monitoring Devices for a Specific Venue in the Management Dashboard



How to Migrate Deployed Devices From a Single Venue to a Multiple Venue System

This section describes the best practices for migrating a large number of deployed devices and locations from a single venue to a multiple venue system using the Bulk Administration Tool (BAT).

For more information about the tasks referenced here for exporting, editing, and importing TSV files using BAT, see the [Cisco Vision Director Bulk Administration Tool](#) guide.

This section includes the following tasks:

- [Prerequisites, page 45](#) (required)
- [Exporting a Device List for the Original System Configuration, page 46](#) (required)
- [Creating New Venues, page 47](#) (required)
- [Removing All Locations From Existing Groups, page 47](#) (required)
- [Removing Locations From Existing Suites, page 47](#) (only required if DMPs are in suites)
- [Associating Initial Locations to Venues, page 48](#) (required)
- [Completing Venue-Specific Information and Association of Locations Using BAT, page 48](#) (required)
- [Populating Group Information in the New Device List, page 48](#) (required)

Prerequisites

Before you migrate deployed devices from Cisco Vision Dynamic Signage Director, be sure that the following requirements are met:

Caution: Cisco Vision Dynamic Signage Director does not support disabling of multiple venue support (set the “Multiple Venue Enabled?” property to false) after you have previously enabled it and associated objects. In other words, do not toggle between enabling multiple venue support and disabling it.

- You must be sure that the following object types are configured to be unique per venue:

How to Migrate Deployed Devices From a Single Venue to a Multiple Venue System

Groups, zones, locations, scripts, suites, and playlists.

- A recommended best practice is to use a naming convention that easily identifies the venue to which an object is associated by assigning a prefix to the object name. This can make it easier to find and track related objects.

For example, to name scripts, playlists, and locations that belong to a venue called “WEST-SIDE-VENUE” you could use the prefix “WE” such as WE-Script1, WE-Script2, WE-Playlist1, WE-Location1, and so on.

- If you have existing DMPs in a group that are targeted to be in multiple venues, they need to be split up so that each group contains DMPs *only for a single venue*.

For example, if there is a group (ALL-DMPs) that consists of all of the DMPs in Cisco Vision Dynamic Signage Director, then the group needs to be sub-divided into smaller groups of DMPs by venue, such as “ALL-DMPs-Venue1,” “All-DMPs-Venue2,” “ALL-DMPs-No-Venue” and so on.

This same rule applies to other objects like zones, scripts, suites, and locations. If any of these have objects that are targeted to be in different venues or to be global (that is, objects that are not part of any venues) then they need to be sub-divided on a per-venue basis.

- (For DMPs in suites only) All suites must have a suite controller attached.

Tip: You can easily verify whether or not a controller is defined for a suite by looking at the original exported device list (See [Exporting a Device List for the Original System Configuration, page 46.](#)) If Column N (Suite Name) has a value and Column M (Suite Control Type) does not have a corresponding value in the same row, then you know that the Suite named in Column N does not have a device list attached to it.

If a suite controller is not attached, then you must assign a suite controller to it. If there are not any available suite controllers, you can create an artificial one and assign it to the suite. These fake controllers can be deleted after the migration process has completed successfully:

- Go to **Control Panel > Setup > Devices > IP Phones**.
- Create artificial IP phone entries with fake, non-pingable IP addresses.
- Go to **Suites**.
- Select the suite that does not have a suite controller.
- Click the **Phone & Remote** tab on the right panel that has suite properties.
- Assign the artificial IP phone that you created to the suite by selecting the checkbox.

Exporting a Device List for the Original System Configuration

This task should be done to preserve initial single venue system configuration information and to aid re-population of that information to the new multi-venue device list created later.

For more information, see the “Exporting and Downloading a TSV File for Locations and DMPs” topic in the [Cisco Vision Director Bulk Administration Tool](#) guide.

To export a device list for the original system configuration:

- Go to **Control Panel > Setup > Devices > Locations & DMPs**.
- Click **Export**.
- When the Export box displays, click **Download**.
- When the “Select location for download” window appears, type the name of the .txt file that you want to save, or accept the default name and click **Save**.
- Be sure to save a master copy** of the originally exported device list.

Creating New Venues

This task describes how to create a new venue with basic information, which will be further updated in a later task using BAT.

To create new venues:

1. Go to **Control Panel > Setup > Venues**.
2. Specify the Name and Timezone for the venue.
3. Click **Save**.

Removing All Locations From Existing Groups

Note: Before you remove locations from existing groups, be sure that you have completed the requirements in the Prerequisites section to place all objects in unique groups per venue.

Before associating Locations to the new venues, you need to remove them from existing groups.

To remove all Locations from Groups:

1. Go to **Control Panel > Setup > Zones & Groups > Location<->Group**.
2. Click **Groups**.
3. Select an individual group.
4. In the Locations panel on the right, select all Locations for the selected group.
5. You can use Ctrl+Click or Shift+Click key sequences to multi-select the Locations.
6. Click **Remove From Groups**.
7. Repeat from Step 3. on page 47 for all groups that need locations removed.
8. Refresh the browser to reload the UI so that the changes are updated.

Removing Locations From Existing Suites

To associate locations to a venue, they need to be removed from any existing suites. These locations will be added back to the configuration using the BAT tool using the original Device list that was exported.

To remove Locations from existing suites:

1. Go to **Control Panel > Setup > Suites**.
2. Select any suites that contain locations that are targeted to be moved to venues.
3. Select each location and click the red '-' button on the top to delete it from the suite.
Tip: Click the red '-' button rapidly to delete DMPs quickly from the suite.
4. After all DMPs are removed from the suite, be sure to click **Save**.
5. Repeat from Step 2. on page 47 for each suite from which you need to remove locations.

Associating Initial Locations to Venues

To establish the venue-specific fields when you export the new multi-venue device list, you need to associate at least one Location to each new venue that you created.

For more information, see [Associating Venues with Cisco Vision Dynamic Signage Director Objects, page 41](#).

Completing Venue-Specific Information and Association of Locations Using BAT

This task is performed to more easily complete configuration of any remaining venue-specific information and association of locations using BAT.

To complete venue-specific information and association of Locations:

1. Export a new device list.

After the association of at least one Location per venue, the newly exported device list file now contains the venue-specific field entries that can now be more easily populated with the remaining required configuration information.

The venue-specific field entries in the BAT file are:

- Venue Name
- Venue Timezone
- Venue JMX Password—The JMX password is saved in the venue information only when the system is disabled for global credentials.

Note: The Venue JMX Username field is always ignored.

2. To complete association of Locations to venues, edit the TSV file using a spreadsheet application such as Microsoft Excel to:

- a. Complete the venue-specific information.
- b. Copy (or auto-fill) to add rows for new Locations that you want to add to the venues.

3. Import the device list.

For more information, see the “Importing a TSV File” topic in the [Cisco Vision Director Bulk Administration Tool](#) guide.

4. Go to **Control Panel > Setup > Venues** and confirm that the Locations are properly associated to their venues.

Populating Group Information in the New Device List

This step allows you to more easily re-populate the original system’s Group information to the new multi-venue device list.

To populate Group and other information from the original device list:

1. Export a new device list and open the file in your spreadsheet application.
2. Excluding the first row, select all rows and columns.
3. Sort the spreadsheet by the Name field (column E).
4. Obtain the copy of the master device list that you exported in in [Step 1](#). Also sort the master spreadsheet by the Name field.
5. From the original master file, copy the columns that have Group information (Z, AA, AB, AC, and so on) and paste them appropriately into your new device list.

How to Migrate Deployed Devices From a Single Venue to a Multiple Venue System

Tip: When working with certain rows and columns in Microsoft Excel, the hide/unhide columns or rows feature and freeze/unfreeze feature can be used to efficiently do this job. For information about these features, see the Microsoft support site.

6. From the original master file, also copy columns that have Suites and Suite Controller information (J-Y).
7. Save the new device list.
8. Import the new device list into Cisco Vision Dynamic Signage Director.
9. After the import is complete, refresh the browser.



System Accounts on the Cisco Vision Dynamic Signage Director Servers

First Published: 2017-11-15

This module describes the default system accounts implemented by Cisco Vision Dynamic Signage Director for access and control of certain server functions. Aside from the admin account, these system accounts are generally separate from the user accounts that secure access to the Cisco Vision Dynamic Signage Director feature configuration and operation.

In addition, only a few of these accounts are intended for general modification after installation of the server. Other system accounts are reserved for special services or technical support and should not be modified unless you are instructed to do so, or you otherwise understand the impact to your server installation.

For information about user accounts and Role-Based Access Control (RBAC) in Cisco Vision Dynamic Signage Director, see [User Management in Cisco Vision Dynamic Signage Director, page 55](#).

Contents

- [Information About System Accounts, page 51](#)
- [How to Change System Account Passwords, page 53](#)

Information About System Accounts

All of the system accounts are automatically implemented upon installation of the Dynamic Signage Director software.

This section provides an overview of the default system accounts in Cisco Vision Dynamic Signage Director:

- [Common System Accounts, page 52](#)
- [Other System Accounts, page 52](#)

Common System Accounts

[Table 1 on page 52](#) describes the common system accounts for Cisco Vision Dynamic Signage Director that are intended for you to modify after deployment of your server, and on which server platform they are supported. These common system accounts are automatically implemented upon installation of the Dynamic Signage Director software.

Table 1 Description of Common System Accounts

Account	Purpose	Server Platform
Admin	<p>Cisco Vision Dynamic Signage Director</p> <p>Account that provides access to the administrator RBAC functions in the Cisco Vision Dynamic Signage Director user interface(UI).¹ It is automatically implemented upon installation of the Dynamic Signage Director software.</p> <p>The username is: admin</p> <p>The default password is: admin</p> <p>Using the Text Utility Interface (TUI) to change the admin account password allows an installer to recover access to the Cisco Vision Dynamic Signage Director UI. The password for the admin user account can also be changed in the Cisco Vision Dynamic Signage Director Control Panel Setup or by setting the option to force a password change upon initial login with the admin account.</p>	Cisco Vision Dynamic Signage Director
Installer	<p>Account that provides access to the TUI using a directly-connected console or SSH client.</p> <p>The username is: installer</p> <p>The default password is: cisco!123.²</p>	Cisco Vision Dynamic Signage Director

1. For more information on the administrator role in Cisco Vision Dynamic Signage Director, see [User Management in Cisco Vision Dynamic Signage Director, page 55](#).
2. For more information about the TUI, see [Cisco Vision Dynamic Signage Director Server Text Utility Interface, page 89](#).

Other System Accounts

[Table 2](#) describes some other default system accounts that are reserved for use in Cisco Vision troubleshooting or other specialized access.

Table 2 Description of Reserved System Accounts

Account	Purpose	Server Platform
admgr	Reserved for use by special agreement with Cisco Systems to support the Media Planner Import API. ¹	Cisco Vision Dynamic Signage Director
MySQL	Reserved for internal use only to access the MySQL database account.	Cisco Vision Dynamic Signage Director
TAC user	Reserved for troubleshooting with remote shell access. This account should remain disabled and only activated when instructed by Cisco Technical Support for troubleshooting.	Cisco Vision Dynamic Signage Director

1. For more information about the Media Planner Import API and other API support in Cisco Vision Dynamic Signage Director, see the *Cisco Vision Director Operation Guide*.

How to Change System Account Passwords

You can change system account passwords from the defaults in Cisco Vision Dynamic Signage Director using the TUI.

Note: To navigate through the TUI menus you must type the character that corresponds to the menu area where you want to go (a, b, c, and so on) and press Enter. To return to other menus, you must back out of the hierarchy of menus using one of the indicated keys to return you to prior menus.

To change system account passwords:

1. On the Cisco Vision Dynamic Signage Director, log into the TUI by doing the following:
 - a. Use a directly connected console, or use an SSH client from a laptop computer that is connected to the Cisco Vision Dynamic Signage Director network to run a secure login to the primary Cisco Vision Dynamic Signage Director server using the IP address for your server.
 - b. When the login prompt appears, enter the **installer** userid followed by the installer password at the password prompt.
2. From the Main Menu, go to **System Accounts**.
3. Select the system account whose password you want to change.
4. At the prompt, type the new password.
5. When prompted to confirm, retype the password.
6. Press any key to return to the System Accounts menu.
7. Return to the Main Menu and exit the TUI.

How to Change System Account Passwords



User Management in Cisco Vision Dynamic Signage Director

First Published: 2017-11-15

Cisco Vision Dynamic Signage Director deployments normally have a team of people who are responsible for different aspects of the site setup and event operation. For example, in addition to a system administrator, there is usually an event operator, a content manager, and a technical support person, among other personnel. Each person has different skills and needs for working with the Cisco Vision Dynamic Signage Director software.

The Cisco Vision Dynamic Signage Director software implements Role-Based Access Control (RBAC) to control permissions and user access to only the portions of the system for which they are trained and authorized to use. More than one user can be assigned to the same role in the software. However, only a single role can be assigned to each username.

For more details about RBAC in a multi-venue environment, see [Role-Based Access Control for Hierarchical Management of Multiple Venues, page 36](#).

Information About User Management

This section includes the following topics:

- [Administrator Role Overview, page 55](#)
- [RBAC Roles Overview, page 56](#)
- [Access Summary by Role, page 59](#)

Administrator Role Overview

Note: This section describes the primary (or central) Administrator role in a Cisco Vision Dynamic Signage Director system. In Release 5.0, an additional administrative role called the *Venue Administrator* is introduced. A Venue Administrator has a subset of administrative permissions that are authorized on a per-venue basis. See [Table 2 on page 60](#).

The primary Administrator role has unrestricted access to the Cisco Vision Dynamic Signage Director software, and is the only role that can add users and assign RBAC privileges to them. The Administrator role is pre-configured in Cisco Vision Dynamic Signage Director and cannot be deleted. However, you can change the password. You also can have more than one user assigned with Administrator privileges.

The Cisco Vision Dynamic Signage Director administrator is the person who is responsible for deploying the Cisco Vision solution throughout the venue.

The primary administrator has sufficient permissions to do the following functions:

- Installing, upgrading, backing up, and restoring Cisco Vision Dynamic Signage Director servers.
- Associating objects (including Venue Operators and Venue Administrators) to venues.

Information About User Management

Note: Users assigned to the Administrator role have *global* access to all venues in a multi-venue environment. Venue Administrators only have access to those venues for which they are authorized by a primary Cisco Vision Dynamic Signage Director administrator.

- Creating additional users and assigning roles.
- Adding devices to Cisco Vision Director.
- Staging content.
- Configuring the channel lineup (Content Managers can also configure this area).
- Configuring local control areas such as luxury suites, back offices, and bars.
- Configuring Point of Sale (POS).
- Generating Proof of Play (PoP).
- Configuring the Dynamic Menu Board application.
- Configuring the TV Off custom application.
- Configuring Command Center Monitoring (CCM), including rebooting DMPs and controlling TVs.

RBAC Roles Overview

[Table 1 on page 57](#) provides an overview of the roles that can be assigned by the Administrator in Cisco Vision Dynamic Signage Director. For a complete mapping of permissions by role, see [Table 2 on page 60](#).

Table 1 Cisco Vision Dynamic Signage Director Roles

Role	Overview
Concessionaire	<p>Concessionaires have access only to the Dynamic Menu Board application, which allows modification of certain text-based and graphics items, and the background graphic on menus.</p> <ul style="list-style-type: none"> ■ All content uploaded by the concessionaire is available to all users that have sufficient permissions based on the roles assigned to them. ■ The concessionaire role does not have permissions in the Control Panel or the Management Dashboard, and they can only see the DMB themes that they create.
Content Manager	<p>Content Managers are responsible for uploading content and ads provided by the creative services team.</p> <ul style="list-style-type: none"> ■ They create event scripts so that the correct content displays in the proper area of the venue and the proper area of the TV screen according to the specified schedule. ■ The content manager role has permissions in Cisco Vision Dynamic Signage Director to configure event states/scripts, zones, groups, screen templates, playlists, and tickers. ■ Content managers also can assign gadgets for custom menus and create playlists for those menus.
Event Operator	<p>Event Operators run the Cisco Vision Director event scripts during an event. The event operator role has permissions to start and stop scripts and modify their states.</p> <ul style="list-style-type: none"> ■ They can change the transition of an event state from time-based to manual, move an event into one of the three ad hoc states (Inside Emergency, Outside Emergency, or Delay), and approve ticker content (legacy version). ■ Additionally, the event operator keeps track of which break states have played and is responsible for performing the pre-game walk-through.
Facility Operator	<p>Facility Operators have access only to the TV Off application.</p> <ul style="list-style-type: none"> ■ The facility operator must access this application directly using the <code>http://ipaddress:9090/web/sv/home</code>, where <i>ipaddress</i> is the IP Address of the Cisco Vision Dynamic Signage Director server.
Help Desk	<p>Help Desk users have read-only permissions to view and monitor information on the Management Dashboard and to use CCM. This role does not have permissions in the Control Panel, except to change their own password.</p> <p>For more information on the tasks performed by the help desk role, see the StadiumVision Director Management Dashboard Guide.</p>

Table 1 Cisco Vision Dynamic Signage Director Roles (continued)

Role	Overview
Support	<p>Support users are responsible for first-level technical support.</p> <ul style="list-style-type: none"> ■ They have limited access to the Management Dashboard to monitor DMP status, troubleshoot, and manage the DMPs on the Cisco Vision network. They also have access to CCM. ■ The support role does not have permissions in the Control Panel, except to change their own password. <p>For more information on the tasks performed by the help desk role, see the StadiumVision Director Management Dashboard Guide.</p>
Venue Administrator	<p>(Release 5.0 and later) Venue Administrators have limited permissions at the venues authorized by the central Administrator for that user, for the following areas of Cisco Vision Dynamic Signage Director:</p> <p>Note: New Management Dashboard and CCM functionality is added for the Venue Administrator beginning in Release 5.0.0-526 (SP2).</p> <ul style="list-style-type: none"> ■ Control Panel—Content, Control (Script control and Staging), Schedule. ■ Management Dashboard: <ul style="list-style-type: none"> – Release 5.0.0-526 (SP2) and later releases—The Venue Administrator can issue all DMP and TV commands. – Release 5.0.0-421 (SP1) and earlier releases—Read-only access with limited command support. ■ Command Center Monitoring: <ul style="list-style-type: none"> – Release 5.0.0-526 (SP2) and later releases—The Venue Administrator can run the Reboot Device command from CCM to restart DMPs. – Release 5.0.0-421 (SP1) and earlier releases—Read-only access. ■ Setup—Devices (Display specifications only); Read-only access to Zones & Groups, Channels, Luxury Suites.
Venue Operator	<p>(Release 3.1 and later). Venue Operators have script control only, and only for venues authorized by the central Administrator for that user.</p> <ul style="list-style-type: none"> ■ In the Management Dashboard, venue operators can view and monitor information on the Management Dashboard with read-only access to the venues for which permissions are granted. ■ They also have access to CCM. <p>Note: Venue Operators and Venue Administrators are the only roles that have venue-specific permissions. For more information, see the Configuring Cisco Vision Dynamic Signage Director for Multiple Venue Support, page 35</p>

Access Summary by Role

[Table 2 on page 60](#) provides a summary of the areas of access in the Cisco Vision Dynamic Signage Director software by each user role.

Note: “Yes” indicates that the user role has access to the corresponding functional area, and “–” means that the role does not have authorization there.

Table 2 Role Access Summary by Functional Area of Cisco Vision Dynamic Signage Director

Functional Area	Admin	Concessionaire	Content Manager	Event Operator	Facility Operator	Help Desk	Support	Venue Admin	Venue Operator
Command Center Monitoring (CCM)	Yes	–	–	–	–	Read only	Read only	Yes	Read only
Control Panel/ Setup									
Channels	Yes	–	Yes	–	–	–	–	Read only	–
Data Integration	Yes	–	Yes	–	–	–	–	–	–
Devices	Yes	–	–	–	–	–	–	Limited¹	–
Menus	Yes	–	Yes	–	–	–	–	–	–
My Profile	–	Yes	Yes	Yes	Yes	Yes	Yes	Yes	Yes
Proof of Play	Yes	–	–	–	–	–	–	–	–
Stores	Yes	–	–	–	–	–	–	–	–
Suites	Yes	–	–	–	–	–	Limited²	Read only	–
Templates	Yes	–	Yes	–	–	–	–	–	–
Triggers	Yes	–	–	–	–	–	–	–	–
Users	Yes	–	–	–	–	–	–	–	–
Venues	Yes	–	–	–	–	–	–	–	–
Zones & Groups	Yes	–	Yes	Yes	–	–	–	Read only	–
Control Panel									
Content	Yes	–	Yes	–	–	–	–	Limited³	–
Control	Yes	–	–	Yes	–	–	–	Limited⁴	Limited⁵
Control /Staging	Yes	–	–	Yes	–	–	–	Yes	–
Schedule	Yes	–	Yes	–	–	–	–	Yes	–
Widgets	Yes	–	Yes	–	–	–	–	–	–
Dynamic Menu Boards	Yes	Yes	Yes	–	–	–	–	–	–
Management Dashboard	Yes	–	–	–	–	Limited⁵	Yes⁶	Limited⁷	Limited⁸
Scheduler Application	Yes	–	–	Yes	–	–	–	–	–
Software Manager	Yes	–	–	–	–	–	–	–	–
System State Reports	Yes	–	–	–	–	–	–	–	–
TV Off Application	Yes	–	–	Yes	Yes	–	–	–	–

1. Venue Administrators can only edit the Display Specifications panel.

Information About User Management

2. Support users can set up TV control PINs and channel guides for suites.
3. Venue Administrators can delete content associated (tagged) to the venues for which that venue admin is authorized. External content, channels, and Dynamic Menu Board (DMB) content items are global to all venues. Therefore, these global content items also can be deleted by the venue admin.
4. Venue Administrators and Venue Operators have script control only, and only for venues authorized by the Administrator for that user.
5. Help Desk users can view and monitor information on the Management Dashboard with read-only access. They also can run Get Status, Ping, Display IP, and Ping Test commands for DMPs in the Management Dashboard.
6. Support users can run Get Status, Ping, Display IP, Ping Test, TV On/Off, Set Display Input, Set Display Banner, Set Closed Captions, Set Video Channel, Cabling Test using TDR, and Show TDR Test Results commands.
7. Venue Administrators can view and monitor information on the Management Dashboard with read-only access to the venues for which permissions are granted. They also can run Get Status, Ping, Display IP, and Ping Test commands in the Management Dashboard for the DMPs in the venues at which that Venue Administrator is authorized. Beginning in Release 5.0.0-526 (SP2), Venue Administrators can run all DMP and TV commands.
8. Venue Operators can view and monitor information on the Management Dashboard with read-only access to the venues for which permissions are granted. They also can run Get Status, Ping, Display IP, and Query Syslog commands in the Management Dashboard for the DMPs in the venues at which that Venue Operator is authorized.



Backing Up and Restoring Cisco Vision Dynamic Signage Director Servers

First Published: 2017-11-15

This module describes how to setup and schedule backups between a primary and secondary server, and restore data between them.

Contents

- [Prerequisites for Backing Up and Restoring Cisco Vision Dynamic Signage Director Servers, page 63](#)
- [Restrictions for Backing Up and Restoring Cisco Vision Dynamic Signage Director Servers, page 64](#)
- [Information About Backing Up and Restoring Cisco Vision Dynamic Signage Director Servers, page 64](#)
- [How to Backup a Cisco Vision Dynamic Signage Director Server, page 65](#)
- [How to Restore a Cisco Vision Dynamic Signage Director Server, page 72](#)

Prerequisites for Backing Up and Restoring Cisco Vision Dynamic Signage Director Servers

Before you backup or restore Cisco Vision Dynamic Signage Director servers, be sure that the following requirements are met:

CAUTION: For any release 4.1 systems or releases prior to 5.0 SP2, imported logos as channel icons are not backed up (the channel icons will disappear during the upgrade procedure of backing up the primary and restoring to secondary if the icons are not already on the secondary server). A maintenance patch (SV-DIRECTOR-HOTFIX-CSCvd35309) is needed on both the primary and secondary servers before you run any backup and restore operations as part of an upgrade from any 4.1 release, or to Release 5.0 SP2. Otherwise, you will need to re-import the logos after upgrading to Release 5.0 SP2.

- You are familiar with using the Text Utility Interface (TUI) in Cisco Vision Dynamic Signage Director.
For more information, see [Cisco Vision Dynamic Signage Director Server Text Utility Interface, page 89](#).
- You have a directly-connected console or an SSH client to access the primary active and secondary servers.
- You have the IP addresses of the active and secondary servers.
- You know the installer account credentials on the Cisco Vision Dynamic Signage Director active and secondary servers.

- The IP address of the secondary server must be reachable on the network from the active server or the TUI backup configuration will fail.
- You have determined an appropriate time on the network to schedule automatic backups and restores.

Restrictions for Backing Up and Restoring Cisco Vision Dynamic Signage Director Servers

Consider the following restrictions when backing up and restoring Cisco Vision Dynamic Signage Director servers:

CAUTION: The tasks described in this document apply only to a redundant server environment where *both* servers are running Cisco Vision Dynamic Signage Director software.

- If you have to fail over to your secondary Cisco Vision Dynamic Signage Director server due to a problem on the primary, then your original backup configuration will be invalid.

Be aware that your scheduled backup process cannot fully operate by automatically transferring a copy of the backup to the secondary server until you use the TUI automatic backup configuration again to reset the backup configuration between the primary and secondary servers. However, a backup will continue to be saved on the primary server.
- When you fail back to the original primary server and are now using the original IP addressing configuration, you still will need to use the TUI automatic backup configuration again so that the backup directory can be re-established on the secondary server.

Information About Backing Up and Restoring Cisco Vision Dynamic Signage Director Servers

This section includes the following topics:

- [Backup Environment, page 64](#)
- [What Cisco Vision Dynamic Signage Director Data is Backed Up, page 65](#)
- [Disk Storage and Maintenance, page 65](#)
- [Restore Environment, page 65](#)

Backup Environment

While you can run a backup for a network environment where there is only a single Cisco Vision Dynamic Signage Director server, the recommended environment that is described in this document is a redundant environment for either Platform 2 or Platform 3 servers or a virtualized environment. In a redundant environment, you are running Cisco Vision Dynamic Signage Director on a primary server, with a secondary server connected to the same subnet where the backup data from the primary server is saved.

The backup process can be scheduled and also run manually. When a backup is completed, the CMS is automatically restarted.

In Cisco StadiumVision Director Release 4.1 and later releases, the backup task can run even while an event script is running. As part of this change, the database is no longer optimized or repaired during the backup process—a new TUI option is added to run database maintenance manually if needed.

Although it is not expected that database maintenance should be needed on a regular basis, a possible symptom could be slow performance indicating a need to run database maintenance.

Tip: You can look at the backup log (`/var/log/svd-config/backup-YYMMddHHMMSSz.log`) to see if the table updates are “OK” and up-to-date. If not, then use the TUI option to run database maintenance. For more information, see the “Running Database Maintenance” topic in the [Cisco Vision Director Operations Guide](#).

What Cisco Vision Dynamic Signage Director Data is Backed Up

There are several areas of Cisco Vision Dynamic Signage Director that need to be backed up. The backup process backs up the following areas of the Cisco Vision Dynamic Signage Director server:

- Uploaded fonts
- Cisco Vision Dynamic Signage Director Content Management System (CMS)
- Cisco Vision Dynamic Signage Director database
- Cisco Vision Dynamic Signage Director system configuration files
- Content Integration data
- Dynamic Menu Board data (including GAR files)
- Proof of play report data in the `/var/sv/pofp/data` directory

Caution: The proof of play raw data in the `/var/sv/pofp/raw` directory is *not* backed up.

Disk Storage and Maintenance

Note: To be sure that your system has enough disk space, Release 4.0 and later releases only retain one backup file by default.

For more information, see the “Managing Server Resources in Cisco Vision Director” module of the [Cisco Vision Director Operations Guide](#).

Restore Environment

As with backups, you can schedule the restore process or run it manually. When the manual restore screen is displayed, it lists backups from both the backup and restore directories, concatenated together. This allows you to run a manual restore on either the primary or the secondary server. An automated restore always uses the most recent backup file in the restore directory.

Also, the schedule of tasks to run in the primary database and the secondary database will be different, due to the existence of the backup and restore tasks. Therefore, the schedule itself is not automatically restored.

How to Backup a Cisco Vision Dynamic Signage Director Server

This section includes the following tasks:

- [Enabling the Backup Account on the Secondary Server, page 66](#) (required)
- [Setting Up the Primary Server for Automatic Backup and Restore, page 66](#) (required)
- [Scheduling a Regular Backup, page 68](#) (required)
- [Starting a Backup Manually for Immediate Execution, page 69](#) (optional)
- [Verifying Backup Completion, page 70](#) (optional)

- [Modifying the Number of Backup Files to Retain, page 71](#) (optional)

Enabling the Backup Account on the Secondary Server

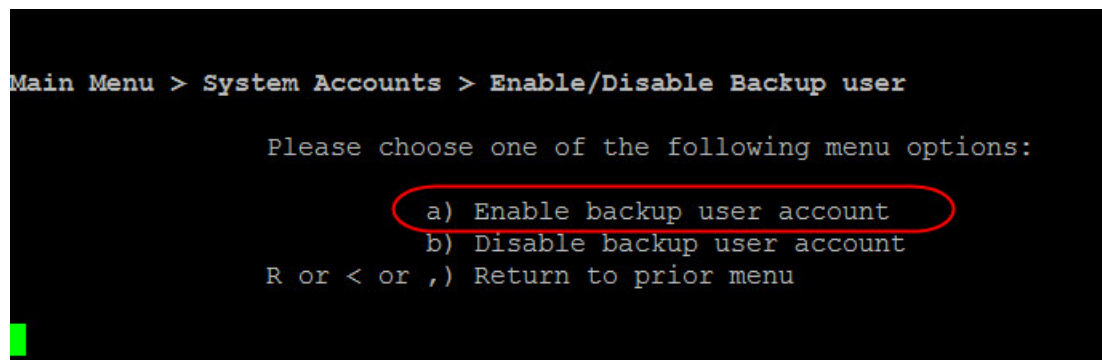
Before you set up the primary Cisco Vision Dynamic Signage Director server for automatic backup and restore with a redundant secondary server, you need to enable the backup account on the secondary server using the TUI.

For more information about using the TUI, see [Cisco Vision Dynamic Signage Director Server Text Utility Interface, page 89](#).

To enable the backup account on the secondary server:

1. On the secondary server, log into the TUI by doing the following:
 - a. Use a directly connected console, or use an SSH client from a laptop computer that is connected to the Cisco Vision Dynamic Signage Director server network to run a secure login to the secondary Cisco Vision Dynamic Signage Director server using the IP address for your server.
 - b. When the login prompt appears, enter the **installer** userid followed by the installer password at the password prompt.
2. From the Main Menu, go to the **System Accounts > Enable/Disable Backup User** menu ([Figure 1 on page 66](#)).

Figure 1 Enable/Disable Backup User Menu



```
Main Menu > System Accounts > Enable/Disable Backup user

Please choose one of the following menu options:

  a) Enable backup user account
  b) Disable backup user account
R or < or ,) Return to prior menu
```

1. Select **Enable backup user account**.

Tip: To navigate through the TUI menus you must type the character that corresponds to the menu area where you want to go (a, b, c, and so on) and press Enter. To return to other menus, you must back out of the hierarchy of menus using one of the indicated keys to return you to prior menus.

When successfully created, the following messages are displayed:

```
Backup user has been enabled.
You must set up the backup user key from the primary system to use it.
```

2. Press any key to return to the Enable/Disable Backup user menu.
3. Continue to return to the Main Menu and exit the TUI.

Setting Up the Primary Server for Automatic Backup and Restore

The configuration of the backup accounts and directories between the primary and backup server is automated using a TUI menu option. You need to use the TUI to setup the Cisco Vision Dynamic Signage Director Server environment to be able to run the backup and restore processes.

Note: The TUI is only used to configure the backup environment. You need to use the Management Dashboard to schedule or run any manual backups. For more information, see [Scheduling a Regular Backup, page 68](#) and [Starting a Backup Manually for Immediate Execution, page 69](#).

To set up the primary server for automatic backup and restore:

1. On the primary server, log into the TUI by doing the following:
 - a. Use a directly connected console, or use an SSH client from a laptop computer that is connected to the Cisco Vision Dynamic Signage Director Server network to run a secure login to the primary Cisco Vision Dynamic Signage Director server using the IP address for your server.
 - b. When the login prompt appears, enter the **installer** userid followed by the installer password at the password prompt.
2. From the Main Menu, go to **Cisco Vision Server Administration > Setup automatic backup and restore**.

Figure 2 Setup Automatic Backup and Restore Menu Option

```
Main Menu > Cisco Vision Server Administration

Please choose one of the following menu options:

a) Display Software Version
b) Upgrade Server
c) Restart Cisco Vision Dynamic Signage Director software
d) Shutdown Cisco Vision dynamic Signage Director software
e) Setup automatic backup and restore
f) Re-Run CiscoVision initial configuration
g) Retention Policy
h) Database Maintenance
i) Failover
j) Reboot
k) Power Off
R or < or ,) Return to prior menu
```

3. At the prompt type the IP address or hostname of your secondary server as shown in the example in [Figure 3 on page 67](#):

Figure 3 Secondary Server IP Address Configuration

```
-----
Please enter the IP address of the currently inactive SVD server
Enter hostname (or press <ENTER> to cancel): 10.194.171.62
```

4. At the prompt, type the password for the installer account on the secondary backup server.
5. When accepted, the system generates the RSA keys and the public key is copied to the secondary server. Confirm that the keys are created without errors as shown in [\(Figure 4 on page 68\)](#):

Figure 4 Generation of RSA Keys

```

Please enter the IP address of the currently inactive SVD server
Enter hostname (or press <ENTER> to cancel): 10.194.171.62
Please enter the password for installer @ 10.194.171.62:
Generating public/private rsa key pair.
Your identification has been saved in /root/.ssh/id_rsa.
Your public key has been saved in /root/.ssh/id_rsa.pub.
The key fingerprint is:
01:79:b0:1f:e4:c3:34:07:9a:38:3a:69:2e:65:98:0b root@gatemp34
The key's randomart image is:
+--[ RSA 2048]-----+
  . +..
   O.o
  .o*
  o=* o
  o o .S .
E o B
  * .
  o .
  .
-----+
Press any key to return to the menu.

```

6. Wait until the “Press any key” message appears (there can be a short delay before it is displayed).
7. Then, press any key to return to the Cisco Vision Server Administration menu.
8. Continue to return to the Main Menu and exit the TUI.

Scheduling a Regular Backup

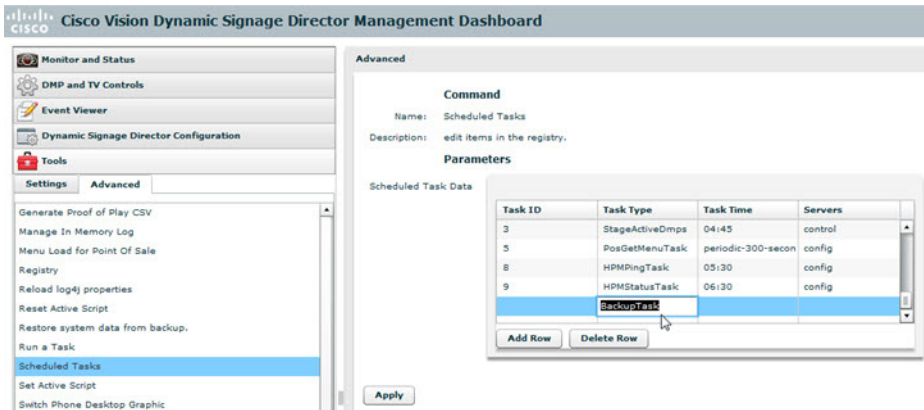
After you have configured the servers to support the backup process, you need to schedule backups using the Management Dashboard in the Cisco Vision Dynamic Signage Director software.

To configure a backup to run on a regular schedule:

1. Log into the primary Cisco Vision Dynamic Signage Director server as an administrator.
2. From the Cisco Vision Dynamic Signage Director main menu, click **Management Dashboard**.
The Cisco Vision Dynamic Signage Director Management Dashboard opens in a new window.
3. Select **Tools > Advanced > Scheduled Tasks**.
4. Click **Add Row** and scroll to the new blank line.
5. Click in the Task Type column and type **BackupTask** (Figure 5 on page 69).

Note: Be sure to type the name of the task exactly as shown with upper and lowercase characters.

Figure 5 Adding a Backup Task to Run on a Regular Schedule



6. Click in the Task Time column and specify the time (in 24:00 format) when you want the backup to run.
7. Click in the Servers column and type **config**.
8. Click **Apply**.

Starting a Backup Manually for Immediate Execution

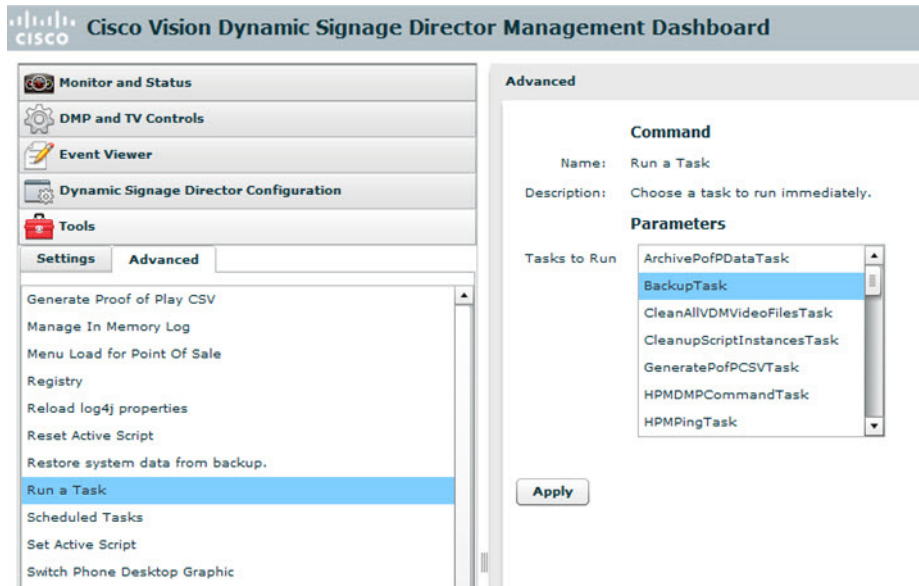
If you want to start a backup other than at the regularly scheduled time, you can run a backup manually.

To start a backup manually for immediate execution:

1. Log into Cisco Vision Dynamic Signage Director as an administrator.
2. From the Cisco Vision Dynamic Signage Director main menu, click **Management Dashboard**.

The Cisco Vision Dynamic Signage Director Management Dashboard is opened in a new window.

3. Select **Tools > Advanced > Run a Task**.
4. In the Tasks to Run box, select the **BackupTask** (Figure 6 on page 70).

Figure 6 Running a Scheduled Backup Task Manually**5. Click Apply.**

The backup begins immediately. When completed, the CMS is automatically restarted.

Note: The “success” message that appears means that the backup task has started. It does not mean that the backup has completed.

Verifying Backup Completion

To verify backup completion, you should confirm that a backup file exists and also that no errors appear in the log file.

Verifying That a Backup File Exists

Note: Verifying the existence of a backup file only tells you that a backup was attempted, but not necessarily if there were any errors.

To verify that a backup file exists:

1. Log into Cisco Vision Dynamic Signage Director as an administrator.
2. From the Cisco Vision Dynamic Signage Director main menu, click **Management Dashboard**.

The Cisco Vision Dynamic Signage Director Management Dashboard is opened in a new window.

3. Select **Tools > Advanced > Restore system data from backup**.
4. Verify that backup files with dates and times appear.

Finding Backup Errors in the Log File

Note: Be aware that the messages “Starting backup” and “Backup completed” will always appear in the log regardless of success.

To find backup errors in the log file:

1. Open the `/opt/sv/servers/config/logs/sv_dev_debug.log` file.

How to Backup a Cisco Vision Dynamic Signage Director Server

Tip: You can access log files from the TUI, or by running a System State Report from the Cisco Vision Dynamic Signage Director main menu.

2. In the `sv_dev_debug.log` file, find messages that include the string “com.cisco.sv.backup.”
These are the backup process messages.
3. Find the “Starting backup” message.
4. After the “Starting backup” message (but before the “Backup completed” message), look for a “com.cisco.sv.backup” message that also includes “ERROR” in the string.

If you find this error, the backup did not complete successfully.

Modifying the Number of Backup Files to Retain

To reduce the amount of disk storage required in your system, the default backup retention policy is to keep one backup file. This retention policy can be modified to retain 2, 5, 7, or 10 backup files.

CAUTION: Be aware of your overall disk utilization and the size of your backup content to be sure that the number of backup files that you want to keep can be supported by your system resources.

Note: This task must be run on both the primary server and secondary backup server.

To modify the number of backup files to retain:

1. Log into the TUI by doing the following:
 - a. Use a directly connected console, or use an SSH client from a laptop computer that is connected to the Cisco Vision Dynamic Signage Director server network to run a secure login to the primary Cisco Vision Dynamic Signage Director server using the IP address for your server.
 - b. When the login prompt appears, enter the **installer** userid followed by the installer password at the password prompt.
2. From the Main Menu, go to **Cisco Vision Server Administration > Retention Policy > Backup/restore Files**.

A menu of policy options is displayed (Figure 7 on page 71), where you can choose to retain 1 (the default), 2, 5, 7, or 10 backup files.

Figure 7 Backup Retention Policy Menu

```
Main Menu > Cisco Vision Server Administration > Retention Policy > Backup/restore
Files

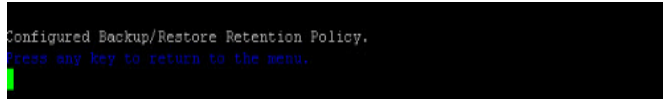
Please choose one of the following menu options:

a) Retain 1 backup
b) Retain 2 backups
c) Retain 5 backups
d) Retain 7 backups
e) Retain 10 backups
R or < or ,) Return to prior menu
```

3. Type the letter that corresponds to the number of days that you want to retain files and press **Enter**.

4. When the change of policy confirmation message displays, press any key to return to the Cisco Vision Server Administration menu.

Figure 8 Confirmation of Policy Change



5. Continue to return to the Main Menu and exit the TUI.

How to Restore a Cisco Vision Dynamic Signage Director Server

The Cisco Vision Dynamic Signage Director software automatically copies backup files between the primary and secondary servers and when the restore process starts, verifies the MD5 checksum.

If you need to failover to the secondary server and do a restore, follow the procedures in [Configuring Failover Between Redundant Cisco Vision Dynamic Signage Director Servers, page 75](#).

Note: If for some reason you need to manually copy files between the servers, be sure that you copy both the .tar and .chksum files because the restore process automatically uses both files to verify the MD5 signature.

This section includes the following tasks:

- [Starting a Restore Manually for Immediate Execution, page 72](#) (optional)
- [Restarting the Cisco Vision Dynamic Signage Director Software, page 73](#) (required after restore run)

Starting a Restore Manually for Immediate Execution

If you want to start a restore other than at the regularly scheduled time, the Cisco Vision Dynamic Signage Director software also allows you to run a restore from backup to begin immediately.

CAUTION: You cannot successfully run the restore process while an event script is running. In addition, if your venue was running any script when the backup took place, then those scripts will begin running after the restore.

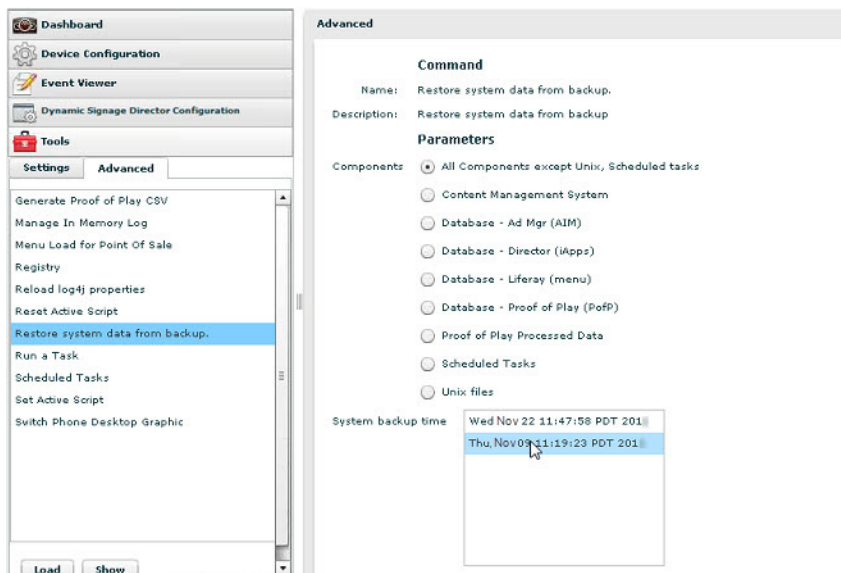
To start a restore manually for immediate execution:

1. Log into Cisco Vision Dynamic Signage Director as an administrator.
2. From the Cisco Vision Dynamic Signage Director main menu, click **Management Dashboard**.

The Cisco Vision Dynamic Signage Director Management Dashboard is opened in a new window.

3. Select **Tools > Advanced > Restore system data from backup**.
4. For Components, select **All components except Scheduled tasks** ([Figure 9 on page 73](#)).

Figure 9 Running a Restore Task Manually



5. (Optional) If you do not want to restore the latest backup (the default), then in the System backup time box, select the date and time of the backup file that you want to restore (Figure 9 on page 73).

6. Click **Apply**.

The restore begins immediately.

Note: If you need to also restore the scheduled tasks, you can rerun the Restore system data from backup and for Components, select **Scheduled Tasks**.

Restarting the Cisco Vision Dynamic Signage Director Software

After you perform any restore on a Cisco Vision Dynamic Signage Director server, you must restart the Cisco Vision Dynamic Signage Director software to resume normal operation of the services.

To restart the Cisco Vision Dynamic Signage Director software:

1. On the primary server, log into the TUI by doing the following:
 - a. Use a directly connected console, or use an SSH client from a laptop computer that is connected to the Cisco Vision Dynamic Signage Director server network to run a secure login to the primary Cisco Vision Dynamic Signage Director server using the IP address for your server.
 - b. When the login prompt appears, enter the **installer** userid followed by the installer password at the password prompt.
2. From the Main Menu, go to **Cisco Vision Server Administration > Restart Cisco Vision Dynamic Signage Director Software**.
3. Return to the Main Menu and exit the TUI.



Configuring Failover Between Redundant Cisco Vision Dynamic Signage Director Servers

First Published: 2017-11-15

Cisco Vision Dynamic Signage Director supports an environment best described as *warm standby* between two servers that run the Cisco Vision Dynamic Signage Director software—one of the servers operates as the primary active server and the other server operates as a secondary backup server. If a failure occurs, you can configure the backup server to become the active server, but the failover process is not automatic.

Contents

- [Prerequisites for Configuring Failover Between Redundant Cisco Vision Dynamic Signage Director Servers, page 75](#)
- [Restrictions for Configuring Failover Between Redundant Cisco Vision Dynamic Signage Director Servers, page 76](#)
- [Information About Failover Between Redundant Cisco Vision Dynamic Signage Director Servers, page 76](#)
- [How to Promote a Standby Secondary Server to the Active Server, page 77](#)
- [How to Restore the Primary Server to Active, page 82](#)

Note: Restoring the primary server after failover to secondary requires a service interruption and should only be conducted during scheduled downtime. Be aware that until you change the IP address of the primary server to remove the addressing conflict with the newly active secondary server, you will be unable to schedule backups between the two servers. You will also need to reconfigure the backup/restore environment using the Text Utility Interface (TUI) after the restore. For more information, see [Backing Up and Restoring Cisco Vision Dynamic Signage Director Servers, page 63](#).

Prerequisites for Configuring Failover Between Redundant Cisco Vision Dynamic Signage Director Servers

Before you promote a secondary server to become the primary active server, be sure that the following requirements are met:

- You have either physical console access or an SSH client such as PuTTY to log into both Cisco Vision Dynamic Signage Director servers.
- You understand how to use the Text Utility Interface (TUI). For more information, see [Cisco Vision Dynamic Signage Director Server Text Utility Interface, page 89](#). For simplicity in these tasks, the instruction to “select” a particular menu item implies that you type the character that corresponds to the menu option and press **Enter**.
- Verify that you have a successful backup of the primary server on the secondary server. For more information, see [Backing Up and Restoring Cisco Vision Dynamic Signage Director Servers, page 63](#).

Restrictions for Configuring Failover Between Redundant Cisco Vision Dynamic Signage Director Servers

- The Cisco Vision Dynamic Signage Director backup server is on the same subnet as the primary server.
- The servers are using the Eth0 interface for connection to the network.
- You have the IP addresses of the primary and secondary servers.

Tip: The IP address for the server is displayed on the screen when you log into the TUI. You also can view the `/etc/hosts` information on each server using the **TUI System Settings > System Information** menu option.

Restrictions for Configuring Failover Between Redundant Cisco Vision Dynamic Signage Director Servers

The Cisco Vision Dynamic Signage Director server redundancy architecture has the following restrictions:

- The Cisco Vision Dynamic Signage Director server architecture does not support automatic failover when a failure occurs on the active server.
- Depending on your environment, 30 minutes or more is needed to complete the manual failover process.
- In addition, after the manual failover process is completed, a script push will be required if you are in an active event, which depending on your deployment and content size, can take anywhere from minutes to an hour. When pushing the script again, there will be a service interruption.

Information About Failover Between Redundant Cisco Vision Dynamic Signage Director Servers

[Figure 1 on page 77](#) shows the architecture of Cisco Vision Dynamic Signage Director server redundancy under normal network conditions and operation. The primary and secondary servers are addressed as independent hosts with two different IP addresses on the same subnet in the Cisco Connected Venue (Connected Stadium) network.

While the secondary server is still connected to the network, notice that communication and control only occurs between the primary Cisco Vision Dynamic Signage Director server and the rest of the network, including the DMPs.

The secondary server is only connected to the network to be made available as a backup to the primary should a failure occur. In addition, the secondary server can (and should) be configured to be backed up with data from the primary server on a scheduled basis.

Figure 1 Cisco Vision Dynamic Signage Director Redundancy Under Normal Operation

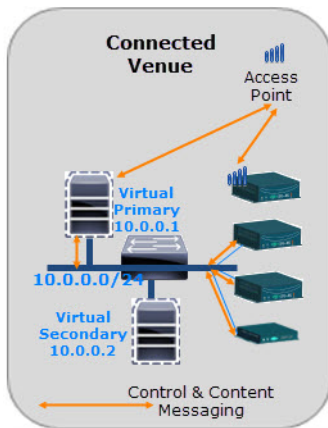
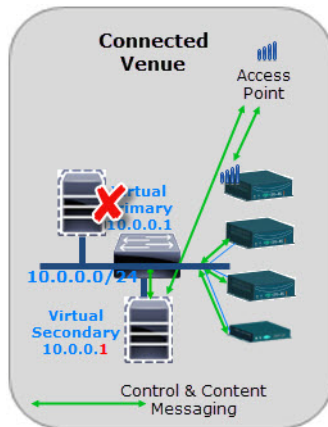


Figure 2 on page 77 shows the redundancy environment when connectivity from the primary Cisco Vision Dynamic Signage Director server fails. When the primary server fails, a manual process must take place to restore the secondary server from a backup, shut down the primary server, and activate the secondary server as the primary.

Notice that the secondary server must be reconfigured to use the same IP address the original primary server. In this example, the secondary server IP address is changed to 10.0.0.1 (from 10.0.0.2) to match the primary server address. When the process is complete, communication and control only occurs between the newly activated secondary server and the rest of the network.

Note: The word “failover” does not mean automatic activation of a secondary server. The failover process is manual.

Figure 2 Cisco Vision Dynamic Signage Director Redundancy Under Failover Operation



How to Promote a Standby Secondary Server to the Active Server

This section describes the related tasks to perform when a primary Cisco Vision Dynamic Signage Director server fails in a redundant server environment, or if you need to perform an upgrade of your Cisco Vision Dynamic Signage Director software. It includes tasks to activate the secondary server to replace the functionality of the primary server for Cisco Vision Dynamic Signage Director operation.

Note: For simplicity in these tasks, any instruction to *go to* or *select* a particular TUI menu item implies that you type the character that corresponds to the menu option and press **Enter**.

How to Promote a Standby Secondary Server to the Active Server

This section includes the following tasks:

- [Starting and Configuring the Services on the Secondary Server, page 78](#) (required)
- [Restoring the Secondary Server with System Data From a Backup File, page 78](#) (required)
- [Stopping Services and Auto-Restart, and Shutting Down the Primary Server, page 78](#) (required)
- [Shutting Down Services on the Secondary Server, page 79](#) (required)
- [Changing the IP Address on the Secondary Server, page 79](#) (required)
- [Restarting the Network Service on the Secondary Server, page 80](#) (required)
- [Verifying Network Connectivity to the Secondary Server, page 81](#) (required)
- [Clearing the ARP Cache on the Switch, page 81](#) (optional)
- [Restarting Cisco Vision Dynamic Signage Director on the Secondary Server, page 81](#) (required)
- [Verifying the Cisco Vision Dynamic Signage Director Configuration on the Secondary Server, page 82](#) (required)

Starting and Configuring the Services on the Secondary Server

To start and configure the services on the secondary server:

1. Log into the TUI as installer on the *secondary* server using a directly-connected console or SSH client.

The TUI Main Menu is displayed.

2. Go to the **Cisco Vision Server Administration > Failover** sub-menu.
3. Select the **Promote as Primary/Active** option.

The Cisco Vision Dynamic Signage Director services are started and also configured to start automatically when a reboot occurs.

Restoring the Secondary Server with System Data From a Backup File

To restore the secondary server with system data from a backup file:

1. Log into Cisco Vision Dynamic Signage Director on the *secondary* server using an administrator account.
2. From the Cisco Vision Dynamic Signage Director main menu, click **Management Dashboard**.
3. From the Dashboard Drawers, select **Tools > Advanced > Restore system data from backup**.
4. Select the components that you want to restore, and select the date of the backup file to use for the restore.
5. Click **Apply**.

The restore begins. A dialog box appears notifying you when the restore process has successfully completed.

6. When the restore is complete, look around the system to verify that everything looks as expected.

Stopping Services and Auto-Restart, and Shutting Down the Primary Server

Note: If the primary server has become unavailable for this task, be sure that you power down the server so that it will not conflict with the newly active secondary server.

How to Promote a Standby Secondary Server to the Active Server

To stop services and auto-restart, and shut down the primary server:

1. Log into the TUI as installer on the *primary* server using a directly-connected console or SSH client.

The TUI Main Menu is displayed.

2. Go to the **Cisco Vision Server Administration > Failover** sub-menu.
3. Select the **Configure as Secondary/Inactive** option.
4. Press any key to return to the Failover sub-menu.
5. Return to the **Cisco Vision Server Administration** menu by typing **R** and pressing **Enter**.
6. Select the **Power Off** option.

The primary server is shut down.

Shutting Down Services on the Secondary Server

To shut down services on the secondary server:

1. Log into the TUI as installer on the *secondary* server using a directly-connected console or SSH client.

The TUI Main Menu is displayed.

2. Go to the **Cisco Vision Server Administration** sub-menu.
3. Select the **Shutdown Cisco Vision Dynamic Signage Director software** option.

All Cisco Vision Dynamic Signage Director services are stopped.

4. Return to the Main Menu by typing **R** and pressing **Enter**.

Changing the IP Address on the Secondary Server

Prerequisites

Before you change the IP address on the secondary server, be sure that the following requirements are met:

- You have the IP address of the primary server.
- You understand how to use the vi editor. For information about using the vi editor, see [Cisco Vision Dynamic Signage Director Server Text Utility Interface, page 89](#).

Note: The system will run if the localhost entry exists but the hostname entry is missing in the `/etc/hosts` file. However, when the secondary hostname exists, the IP address of the secondary server must be changed to match the IP address of the primary server.

Procedure

To change the IP address on the secondary server:

1. From the TUI Main Menu on the secondary server, go to the **System Settings** menu.
2. Select the **Network Settings** option.

The Network Settings sub-menu is displayed.

How to Promote a Standby Secondary Server to the Active Server

3. Select the **Setup Network Information** option.
4. At the Configure Network confirmation screen, press any key to continue.
The Select Action screen is displayed with the “Edit Devices” option highlighted.
5. Press **Enter** to select.
The Select a Device screen is displayed with the “eth0” network interface highlighted.
6. Press **Enter** to select.
The Ethernet Configuration screen is displayed.
Note: The Linux screen is misspelled “Devernet Configuration.”
7. Press the tab key until the cursor is positioned on the Static IP address line.
8. Press the backspace key to go to the beginning of the line and type in the IP address of the primary server.
In our example from [Figure 2 on page 77](#), this would be 10.0.0.1. Be sure to use the actual IP address of your primary server.
9. Press the tab key until the **Ok** button is highlighted and press **Enter**.
You return to the Select a Device screen.
10. Press the tab key until the **Save** button is highlighted and press **Enter**.
You return to the Select Action screen.
11. Press the tab key until the **Save&Quit** button is highlighted and press **Enter**.
You return to the TUI Configure Network screen.
12. Press any key to return to the Network Settings sub-menu.
13. Select the **Edit hosts file** option.
14. Press any key to enter edit mode.
15. Replace this server’s IP address with the IP address of the primary server.
16. Save the configuration and exit vi using the following command:

```
:wq
```

Restarting the Network Service on the Secondary Server

To restart the network service on the secondary server:

1. From the TUI Main Menu on the secondary server, go to the **Services Control** sub-menu.
2. Select the **Networking** option.
The Networking sub-menu is displayed.
3. Select the **Restart networking** option.
The network daemon is restarted and the IP address change is put into effect on the secondary server.

Note: If you are connected to the server through the network using SSH, your session is disconnected and you will need to reconnect using the IP address of the primary server.

Verifying Network Connectivity to the Secondary Server

To verify network connectivity to the secondary server:

1. From the TUI Main Menu on the secondary server, go to the **Troubleshooting** sub-menu.
2. Select the **Ping a host** option.
3. At the “Enter hostname” prompt, type the hostname or IP address of the secondary server and press **Enter**.
4. Look for successful transmission and receipt of PING packets.

Note: If you cannot reach the secondary server, go to [Clearing the ARP Cache on the Switch, page 81](#).

5. Press **Ctrl-C** to stop sending PING packets.
6. Press any key to return to the Troubleshooting menu.

Clearing the ARP Cache on the Switch

This task is optional, as the ARP cache on the switch will refresh in 5-10 minutes. However, if you cannot access the secondary server after changing its IP address, you can clear the ARP cache for that IP address on the switch using the **clear ip arp** privileged EXEC command.

To clear the ARP cache on the switch:

1. Use a directly-connected console, or if you know the IP address of the switch, use Telnet to access the switch as shown in the following example, where *ip-address* is the address of your switch:

```
telnet ip-address
```

2. At the corresponding prompts, enter your login information as shown in the following example, where *yourname* and *yourpass* are your username and password:

```
Username: yourname  
Password: yourpass  
switch>
```

3. Enter privileged EXEC mode using the **enable** command and corresponding password:

```
switch> enable  
Password: enablepassword  
switch#
```

4. To clear the ARP cache of the newly-assigned IP address now used by the secondary server, use the **clear ip arp** command as shown in the following example:

```
clear ip arp 10.0.0.1
```

Restarting Cisco Vision Dynamic Signage Director on the Secondary Server

To restart Cisco Vision Dynamic Signage Director on the secondary server:

1. Do one of the following on the *secondary* server:
 - If still logged into the TUI, go to the Main Menu.
 - If not still logged into the TUI as installer on the secondary server, use the new IP address and log in again using a directly-connected console or SSH client.

How to Restore the Primary Server to Active

The TUI Main Menu is displayed.

2. Go to the **Cisco Vision Server Administration** sub-menu.
3. Select the **Restart Cisco Vision Dynamic Signage Director software** option.
All Cisco Vision Dynamic Signage Director services are started.
4. Press any key to return to the Cisco Vision Server Administration sub-menu.
5. Press **R** and **Enter** until you return to the Main menu.
6. Press **X** to exit the TUI.

Verifying the Cisco Vision Dynamic Signage Director Configuration on the Secondary Server

To verify the Cisco Vision Dynamic Signage Director configuration on the secondary server:

1. Log into Cisco Vision Dynamic Signage Director on the *secondary* server using an administrator account.
2. From the Cisco Vision Dynamic Signage Director main menu, click **Management Dashboard**.
3. From the Dashboard Drawers, select **DMP and TV Controls > Monitoring > Get Status**.
Confirm that you have successful communication between the DMPs and Cisco Vision Dynamic Signage Director.
4. Verify that all of the content is on this server.
5. To establish control of the DMPs, start a script without any content and with the No Staging radio button selected. This should only require less than 10 minutes.

Note: You can push a script with content, but this will result in a longer period of downtime.

How to Restore the Primary Server to Active

Note: This task requires a service interruption.

At a scheduled downtime, you should restore the primary server as the active server to re-establish your normal operating environment to clean up the original primary server from a failure or prepare to do a software upgrade, make IP addressing changes, and have regularly scheduled backups again between the two servers.

Note: For simplicity in these tasks, any instruction to *go to* or *select* a particular TUI menu item implies that you type the character that corresponds to the menu option and press **Enter**.

This section includes the following tasks:

- [Prerequisites, page 83](#)
- [Stopping Services and Auto-Restart on the Secondary Server, page 83](#) (required)
- [Changing the IP Address on the Secondary Server, page 83](#) (required)
- [Verifying Network Connectivity on the Secondary Server, page 84](#) (required)
- [Starting and Configuring the Services on the Original Primary Server, page 85](#) (required)

How to Restore the Primary Server to Active

- [Verifying Network Connectivity to the Primary Server, page 85](#) (required)
- [Restoring the Original Primary Server with System Data From a Backup File, page 85](#) (as required)
- [Restarting the Cisco Vision Dynamic Signage Director Software, page 86](#) (required after restore run)
- [Verifying the Cisco Vision Dynamic Signage Director Configuration on the Original Primary Server, page 86](#) (required)
- [Upgrading the Primary Server Software, page 86](#) (as required)
- [Reconfiguring the Backup Environment After Upgrades, page 87](#) (as required)

Prerequisites

If you have made any administrative changes on the active secondary server, be sure that a successful backup has been run.

While the secondary server is still active, re-configure the backup environment and run a manual backup from the Management Dashboard. The latest backup will then be copied to the primary (inactive) server. For more information, see [Backing Up and Restoring Cisco Vision Dynamic Signage Director Servers, page 63](#).

Stopping Services and Auto-Restart on the Secondary Server

To stop services and auto-restart of them on the secondary server:

1. Log into the TUI as installer on the *secondary* server using a directly-connected console or SSH client.
The TUI Main Menu is displayed.
2. Go to the **Cisco Vision Server Administration > Failover** sub-menu.
3. Select the **Configure as Secondary/Inactive** option.
4. Press any key to return to the Failover sub-menu.
5. Return to the **Cisco Vision Server Administration** menu by typing **R** and pressing **Enter**.
6. Select the **Shutdown Cisco Vision Dynamic Signage Director software** option.

Changing the IP Address on the Secondary Server

Prerequisites

Before you change the IP address on the secondary server, be sure that the following requirements are met:

- You have the IP address of the secondary server.
- You understand how to use the vi editor. For information about using the vi editor, see [Cisco Vision Dynamic Signage Director Server Text Utility Interface, page 89](#).

Procedure

To change the IP address on the secondary server:

1. From the TUI Main Menu on the *secondary* server, go to the **System Settings** menu.
2. Select the **Network Settings** option.

How to Restore the Primary Server to Active

The Network Settings sub-menu is displayed.

3. Select the **Setup Network Information** option.
4. At the Configure Network confirmation screen, press any key to continue.

The Select Action screen is displayed with the “Edit Devices” option highlighted.

5. Press **Enter** to select.

The Select a Device screen is displayed with the “eth0” network interface highlighted.

6. Press **Enter** to select.

The Ethernet Configuration screen is displayed.

Note: The Linux screen is misspelled “Devernet Configuration.”

7. Press the tab key until the cursor is positioned on the Static IP address line.
8. Press the backspace key to go to the beginning of the line and type in the IP address of the secondary server.

In our example from [Figure 1 on page 77](#), this would be 10.0.0.2. Be sure to use the actual IP address of your secondary server.

9. Press the tab key until the **Ok** button is highlighted and press **Enter**.

You return to the Select a Device screen.

10. Press the tab key until the **Save** button is highlighted and press **Enter**.

You return to the Select Action screen.

11. Press the tab key until the **Save&Quit** button is highlighted and press **Enter**.

You return to the TUI Configure Network screen.

12. Press any key to return to the Network Settings sub-menu.

13. Select the **Edit hosts file** option.

14. Press any key to enter edit mode.

15. Replace this server’s IP address with the IP address of the secondary server.

16. Save the configuration and exit vi using the following command:

```
:wq
```

Verifying Network Connectivity on the Secondary Server

To verify network connectivity to the secondary server:

1. From the TUI Main Menu on the *secondary* server, go to the **Troubleshooting** sub-menu.
2. Select the **Ping a host** option.
3. At the “Enter hostname” prompt, type the hostname or IP address of the secondary server and press **Enter**.
4. Look for successful transmission and receipt of PING packets.

Note: If you cannot reach the secondary server, go to [Clearing the ARP Cache on the Switch, page 81](#).

How to Restore the Primary Server to Active

5. Press **Ctrl-C** to stop sending PING packets.
6. Press any key to return to the Troubleshooting menu.

Starting and Configuring the Services on the Original Primary Server

To start and configure the services on the original primary server:

1. Power on the original *primary* server.

Note: It might take a few minutes for SSH to be available as the server boots.

2. Log into the TUI as installer on the original *primary* server using a directly-connected console or SSH client.

The TUI Main Menu is displayed.

3. Go to the **Cisco Vision Server Administration > Failover** sub-menu.

4. Select the **Promote as Primary/Active** option.

The Cisco Vision Dynamic Signage Director services are started and also configured to start automatically when a reboot occurs.

5. Press any key to return to the Failover sub-menu.

6. Depending on the state of the server when it went down and what was done while the server was down, a script might be running on the original primary Cisco Vision Dynamic Signage Director server. If a script is running, end the script in the Cisco Vision Dynamic Signage Director software.

Verifying Network Connectivity to the Primary Server

To verify network connectivity to the primary server:

1. From the TUI Main Menu on the original *primary* server, go to the **Troubleshooting** sub-menu.
2. Select the **Ping a host** option.
3. At the “Enter hostname” prompt, type the hostname or IP address of the primary server and press **Enter**.
4. Look for successful transmission and receipt of PING packets.

Note: If you cannot reach the secondary server, go to [Clearing the ARP Cache on the Switch, page 81](#).

5. Press **Ctrl-C** to stop sending PING packets.
6. Press any key to return to the Troubleshooting menu.
7. Press **R** and **Enter** until you return to the Main menu.
8. Press **X** to exit the TUI.

Restoring the Original Primary Server with System Data From a Backup File

If any administrative changes were made to the system while in failover to the other server, you should restore the backup from the secondary.

Note: This step requires that a backup was run from the secondary server to the primary before reactivating the primary server.

How to Restore the Primary Server to Active

To restore the original primary server with system data from a backup file:

1. Log into Cisco Vision Dynamic Signage Director on the original *primary* server using an administrator account.
2. From the Cisco Vision Dynamic Signage Director main menu, click **Management Dashboard**.
3. From the Dashboard Drawers, select **Tools > Advanced > Restore system data from backup**.
4. Select the components that you want to restore, and select the date of the backup file to use for the restore.
5. Click **Apply**.

The restore begins.

Restarting the Cisco Vision Dynamic Signage Director Software

After you perform any restore on a Cisco Vision Dynamic Signage Director server, you must restart the Cisco Vision Dynamic Signage Director software to resume normal operation of the services.

To restart the Cisco Vision Dynamic Signage Director software:

1. Log into the TUI as installer on the original *primary* server using a directly-connected console or SSH client.

The TUI Main Menu is displayed.

2. Go to **Cisco Vision Server Administration > Restart Cisco Vision Dynamic Signage Director Software**.
3. Press **R** and **Enter** until you return to the Main menu.
4. Press **X** to exit the TUI.

Verifying the Cisco Vision Dynamic Signage Director Configuration on the Original Primary Server

To verify the Cisco Vision Director configuration on the original primary server:

1. Log into Cisco Vision Dynamic Signage Director on the original *primary* server using an administrator account.
2. From the Cisco Vision Dynamic Signage Director main menu, click **Management Dashboard**.
3. From the Dashboard Drawers, select **DMP and TV Controls > Monitoring > Get Status**.

Confirm that you have successful communication between the DMPs and Cisco Vision Dynamic Signage Director.

4. Verify that all of the content is on this server.
5. Test the system by looking at the status in the Management Dashboard and by running test scripts to verify operation of the system.

Upgrading the Primary Server Software

Note: This task is only necessary when performing a software upgrade on redundant servers according to the instructions in [Cisco Vision Software Installation and Upgrade Guide: Dynamic Signage Director Release 6.0](#).

After you complete the process of restoring the original primary server to active status after an upgrade of the software on the secondary server, you are ready to upgrade the primary server software.

Reconfiguring the Backup Environment After Upgrades

After you complete software upgrades for both the secondary and primary servers, you need to reconfigure the backup environment to re-enable the backup account on the secondary server and to configure the primary server for automatic backup and restore. For more information, see [Backing Up and Restoring Cisco Vision Dynamic Signage Director Servers](#), page 63.

How to Restore the Primary Server to Active



Cisco Vision Dynamic Signage Director Server Text Utility Interface

First Published: 2017-11-15

The Text Utility Interface (TUI) provides a console-based interface for use by system installers, administrators, and troubleshooting personnel. The TUI replaces the requirement for any low-level system command line (shell) access and can be used to perform routine system tasks such as modifying system configurations, changing passwords, and checking system logs. Remote TAC access and troubleshooting can both be facilitated from the TUI in the event of an outage or failure.

Contents

- [Information About the TUI, page 89](#)
- [How to Use the TUI, page 93](#)
- [Related Documentation, page 95](#)

Information About the TUI

This section includes the following topics:

- [Overview of the TUI Menus, page 90](#)
- [Working with the TUI Interface, page 92](#)

Overview of the TUI Menus

The TUI is a nested structure of menus with options that allow you to drill down to specific system tasks to be performed on the server. The primary menus are:

- Main Menu
- System Settings
- System Accounts
- Services Control
- Cisco Vision Server Administration
- Troubleshooting

[Table 1 on page 90](#) provides a description of the primary menus included in the Cisco Vision Dynamic Signage Director TUI.

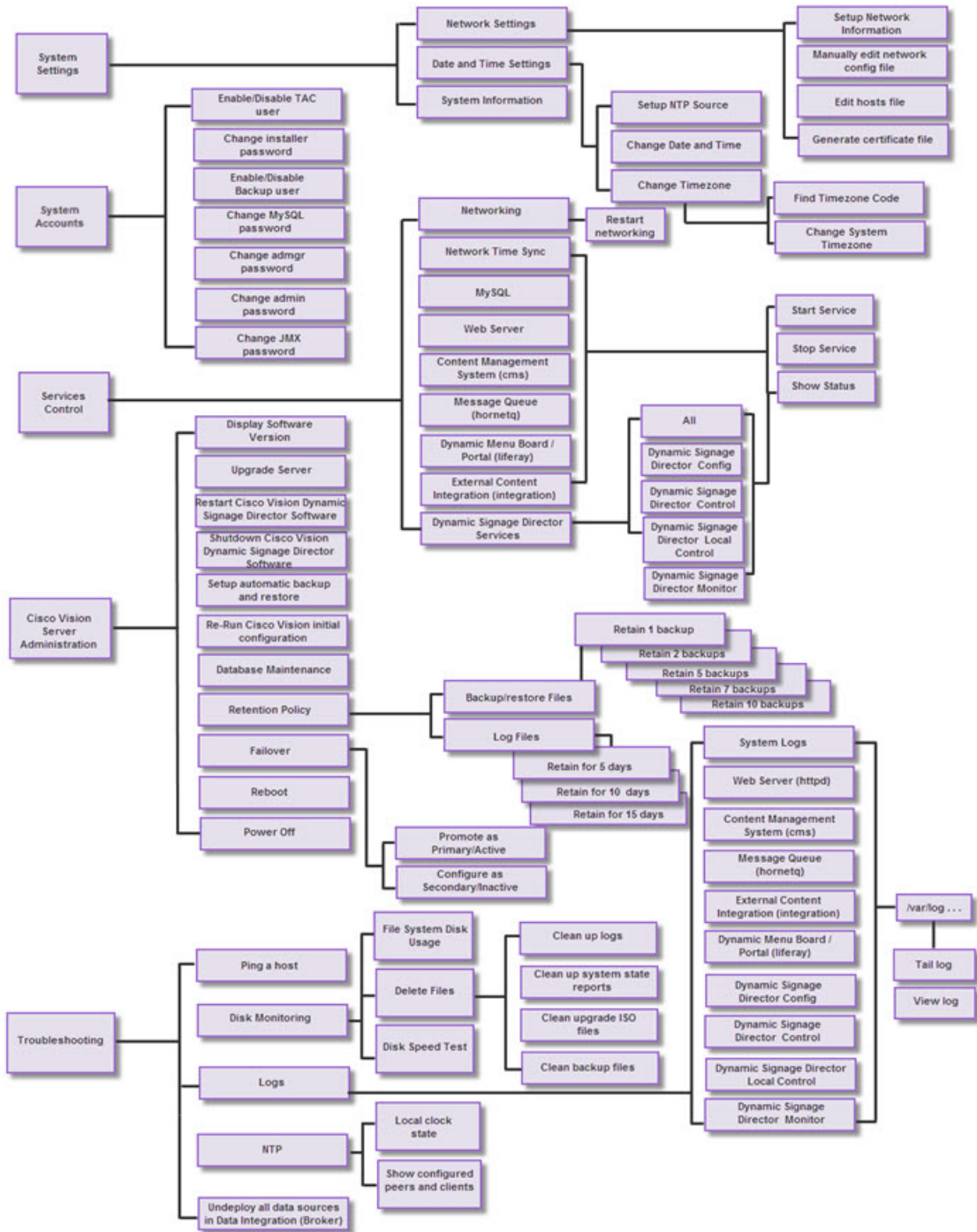
Table 1 Description of the Primary TUI Menus

Menu Name	Use this menu to . . .
Main Menu	Access all other menus or exit the TUI.
System Settings	Change server network configuration, system date/time, or display system information.
System Accounts	Manage default system passwords. For more information about system accounts and modifying them, see System Accounts on the Cisco Vision Dynamic Signage Director Servers, page 51 .
Services Control	Access services running on the server to start, stop, or show status.
Cisco Vision Server Administration	Manage the operation and software configuration of the server.
Troubleshooting	Run a ping command, monitor disk space usage, clean up files to free up disk space, test disk speed, display system logging information, or get NTP information.

[Figure 1 on page 90](#) shows a map of the new Cisco Vision Dynamic Signage Director TUI menu system and options.

Figure 1 TUI Map for Cisco Vision Dynamic Signage Director Servers

Information About the TUI



Working with the TUI Interface

This section includes the following topics:

- [Menu Navigation, page 92](#)
- [File Editor, page 92](#)

Menu Navigation

The Main Menu is displayed when you log in. To navigate through the menus you must type the character that corresponds to the menu area where you want to go (**a**, **b**, **c**, and so on) and press **Enter**.

To return to other menus, you must back out of the hierarchy of menus using one of the indicated keys to return you to prior menus.

CAUTION: Avoid pressing **Ctrl-c** from the TUI. This immediately terminates the TUI session and if services were started during the session they might stop running. Use the TUI menu system to exit the interface.

File Editor

Several of the TUI options open server system files for you to modify using the Unix system vi editor. The following configuration files are editable from the TUI:

- DNS information—/etc/resolv.conf
- NTP server information—/etc/ntp.conf
- Server host information—/etc/hosts

Before modifying configuration files, you should be familiar with the simple editing techniques used within the vi editor. [Table 2 on page 92](#) describes some of the more common vi Editor commands.

Table 2 Common vi Editor Commands

Command	Description
ZZ or :wq	Exit vi and save changes.
:q!	Exit vi without saving changes.
Esc key	Exit current mode and enter vi command mode.
Cursor Movement	
h	Move left (backspace).
j	Move down.
k	Move up.
l	Move right.
Enter key	Move to the beginning of the next line.
Inserting	
a	Append character after cursor.
i	Insert character before cursor. Enters INSERT mode.
r	Replace character under cursor with next character typed.
R	Keep replacing character until [Esc] is pressed.
Deleting	

Table 2 Common vi Editor Commands (continued)

Command	Description
db	Delete word before cursor.
dd	Delete line under cursor.
dw	Delete word under cursor.
x	Delete character under cursor.
Put	
P	Undo deletion of characters, words, or lines before cursor.
p	Undo deletion of characters, words, or lines after cursor.

How to Use the TUI

This section provides information about how to use some of the areas of the TUI interface. It includes the following topics:

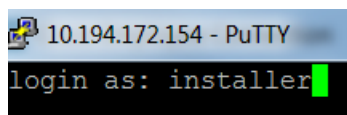
- [Logging Into the TUI, page 93](#)
- [Displaying System Information, page 94](#)
- [Exiting the TUI, page 94](#)

Logging Into the TUI

To access the TUI, you need either physical console access or an SSH client such as PuTTY.

To log into the TUI:

1. Do one of the following:
 - Access the server using a directly-attached console.
 - In the SSH client software, specify the IP address of the server that you want to access.
2. When the “login as:” prompt appears, type **installer** and press **Enter** ([Figure 2 on page 93](#)):

Figure 2 TUI Login Prompt

3. At the password prompt, type the installer password and press **Enter**.

Note: In a PuTTY terminal, the keystrokes for your password entry are not shown.

When the login is successful, the Main Menu is displayed along with some basic system information at the top of the screen (Figure 3 on page 94).

Figure 3 Cisco Vision Dynamic Signage Director TUI Main Menu

```
Cisco Vision Dynamic Signage Director Configuration Menu
Hostname:          cv-director
IP address:        10.194.170.141
Software version: 5.0.0 build 320
-----
Main Menu

Please choose one of the following menu options:

a) System Settings
b) System Accounts
c) Services Control
d) Cisco Vision Server Administration
e) Troubleshooting
X) Exit
```

Note: Once logged in, you can change the installer password from the **System Accounts > Change installer password** menu option.

Displaying System Information

The **System Settings > System Information** option allows you to obtain information about the current network configuration, hosts file, DNS configuration, NTP server, system date and time, and UUID for the server.

To display system information:

1. Go to the TUI Main Menu.
2. Type **a** (for System Settings) and press **Enter**.
3. From the System Settings menu, type the letter corresponding to the System Information option and press **Enter**.

The system information is displayed on your screen.

4. To return to the System Settings menu, press any key.

Exiting the TUI

Caution: Avoid pressing **Ctrl-c** from the TUI. This immediately terminates the TUI session and if services were started during the session they might stop running. Use the TUI menu system to exit the interface.

To exit the TUI:

1. Go to the TUI Main Menu.

Note: If you are in a TUI submenu, you will have to type **R** or **<** or **,** and press **Enter** to navigate back to the Main Menu.

2. Type **X** and press **Enter**.

Related Documentation

The following documents provide details about using some of the specific areas of the TUI:

- Other modules in this Cisco Vision Dynamic Signage Director Server Administration Guide.
- [Cisco Vision Software Installation and Upgrade Guide: Dynamic Signage Director Release 6.0](#)

Related Documentation



System State Reports

First Published: 2017-11-15

The System State Report application enables easy capture and export of system state data for Cisco Vision Dynamic Signage Director servers. This information can be sent to a remote support engineer to help troubleshoot any issues that occur with the system.

Information About System State Reports

[Figure 1 on page 97](#) shows the System State Report screen.

Figure 1 System State Report Screen

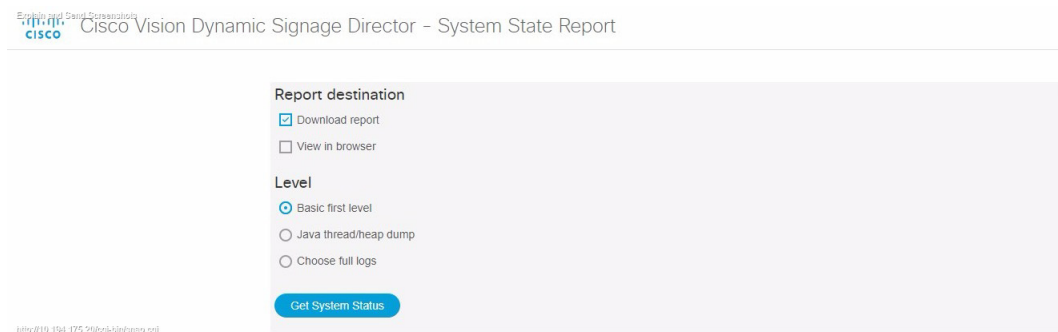


Table 1 on page 98 describes the options provided on the System State Report screen.

Table 1 System State Report Screen Description

Category	Description
Report Destination	<p>Allows you to choose whether you want to download the report or view it in your browser window. If you check Download report, your browser will download the resulting report when the system state report is ready. You can save this file on your computer, view its contents, and mail it to support personnel.</p> <p>If you check View in browser, the resulting report is available for immediate viewing online via the link provided.</p>
Level	<p>Selects the level of detail you want in the report.</p> <ul style="list-style-type: none"> ■ Basic First Level: Provides detailed information of the system state, including information on configuration and current performance of the hardware, the operating system, the database, the Java VM, and the SV application. ■ Java Heap Dump: Displays a report indicating the internal activities of the selected Java Virtual Machine (JVM). Before running the report, you will see a selection screen showing the process ID, the name of the JVM, and its command line. Select one of the JVMs that you wish to get the head dump for, then click Get Heap Dump. The heap dump report will generate. <p>Exercise care in taking a heap dump, because while this is running, it can affect system performance.</p> <ul style="list-style-type: none"> ■ Full SVD Logs: Displays a list of system log files available for retrieving from the server and copying to your local drive or sending to Cisco Support. If you select View in Browser, then you can view the logs online as well.
Previous Reports	<p>Lists up to 15 of the most recent exports of the system state reports that were collected. The reports may have been collected from someone accessing this request page, or from a system scheduled task.</p> <p>You can select one of the links to download to your local drive to view or email to Cisco support.</p>

How to Run a System State Report

This section includes the following tasks:

- [Running a System State Report Manually, page 99](#)
- [Scheduling a System State Report, page 99](#)
- [Viewing Reports, page 99](#)

Running a System State Report Manually

To run a system state report manually:

1. From the Cisco Vision Dynamic Signage Director server Main Menu, click the gear icon. Select **System State Report**.
2. Select one or both report destination types, **Download report** and/or **View in browser**.
3. Under Level, select the type of report that you want to run.
4. Click **Get System Status**.

A status bar is displayed while the report is generating.

Scheduling a System State Report

You can extract the system state data on a periodic basis through the **Tools > Advanced > Scheduled Tasks** function in the Management Dashboard. The reports generated can be viewed under **Previous Reports** on the main System State Report page.

To create a scheduled task:

1. Open the Dashboard and select **Tools > Advanced > Scheduled Tasks**.
2. Click **Add Row** and add a row with the task type being **SystemStateExtractorTask**.
3. Enter a task time as desired.
4. Click **Apply**.

The reports generated can be viewed under **Previous Reports** on the main System State Report page.

Viewing Reports

After manually running a report, the screen displays “Report is ready” as shown in [Figure 2 on page 99](#).

Figure 2 Report is Ready

Explain and Send Screenshots
 Cisco Vision Dynamic Signage Director - System State Report

Report is ready. Please click on a link to re-download.

[Download report 2017-08-29-074452.zip](#)

Duration: 30

Depending on the option(s) that you selected before running the report, you can view the report in your browser by selecting the link provided.

If you downloaded the report, then depending on your browser and its settings, you will get a dialog box to save the report on your local machine. If the automatic download does not work, you can click on the link after the word **Download** to download the file again. The report is downloaded as a compressed file (.zip) containing multiple parts to the report.

Note: The heap dump report type is a compressed report file which you can save to your local drive and forward to support personnel for troubleshooting, and is packaged like the Basic Level report.

Viewing Scheduled Reports and Previous Reports

Scheduled reports can be viewed under **Previous Reports** on the System State Report screen. The format of the file name is the date and time that the report was run.

Click one of the timestamps under **Previous Reports** to download the report that ran at the scheduled time. You may get a dialog box to save the report on your local machine. If so, save it as desired. This is a compressed file containing multiple parts to the report.

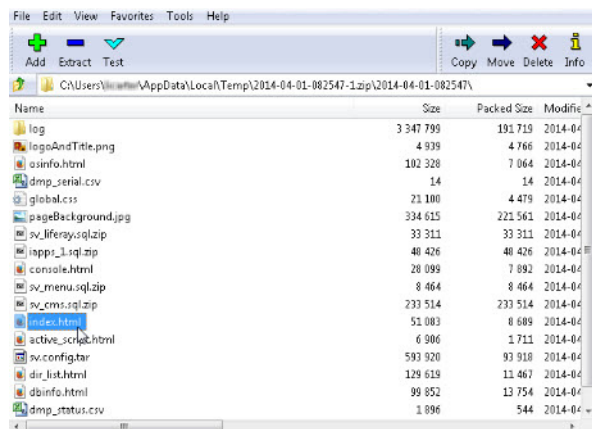
Viewing the Contents of the Zip File

Once you have downloaded the report file to your PC, you will have a .zip file. You can email it to Cisco support as is.

To view the contents of a downloaded file:

1. Double-click the file to open the .zip file archive manager. The contents of this file depends on the file compression software program installed on your PC. [Figure 3 on page 100](#) shows an example of a common Microsoft Windows compression file manager, where the .zip file has been opened to view the contents.

Figure 3 Windows Compression File Manager Example



2. Click **Extract** and load all of the files in the archive to a new directory on your local drive.
3. Navigate to the directory that you just created and locate a file named **index.html**. Double-click the file and it will open in your internet browser.
4. Click links from the browser page to view the rest of the report.

Tip: In the case of the heap dump and log file reports, there is not an “index.html” file. Simply navigate down the levels of folders until you see the log files of interest.