

# Unified Communications Manager Express 7.x GUI Errors

Document ID: 110984

## Contents

### Introduction

#### Prerequisites

- Requirements
- Components Used
- Conventions

#### **Error: Configuration change failed.**

- Problem
- Solution

#### **Error: Unable to login as administrator to the Cisco CallManagerExpress at site 'local'.**

- Problem
- Solution

#### **Error: login to callmanager express failed with the new values**

- Problem
- Solution

#### **CME GUI Displays a Blank Screen**

- Problem
- Solution

#### **Error: Login to CallManager Express as administrator failed.**

- Problem
- Solution

#### **Error: LOGIN FAILED, System is not Initialized**

- Problem
- Solution

### Related Information

## Introduction

This document describes the steps required to resolve the Cisco Unified Communications Manager Express (CME) GUI error messages.

## Prerequisites

## Requirements

There are no specific requirements for this document.

## Components Used

The information in this document is based on Cisco Unified Communications Manager Express Version 7.x.

The information in this document was created from the devices in a specific lab environment. All of the devices used in this document started with a cleared (default) configuration. If your network is live, make sure that you understand the potential impact of any command.

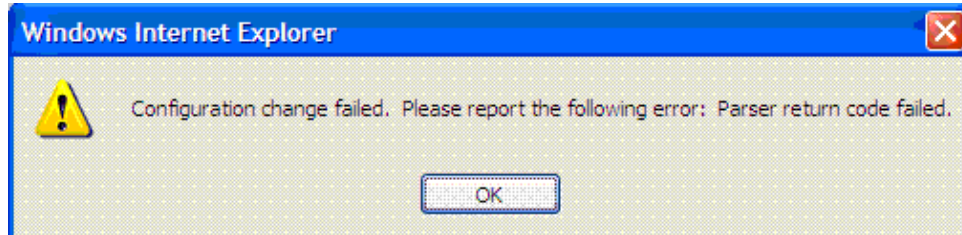
## Conventions

Refer to Cisco Technical Tips Conventions for more information on document conventions.

## Error: Configuration change failed.

### Problem

When you attempt to modify the Cisco Unified CME configuration through the GUI, this error message appears: Configuration change failed. Please report the following error: Parser return code failed.



### Solution

This issue occurs when the user is not present in the AAA database.

In order to resolve this issue, disable AAA authorization of configuration commands using the **no aaa authorization config-commands** command in the global configuration mode on the Cisco Unified CME. By default, AAA authorization is disabled.

Use the **no aaa authorization config-commands** command in order to stop the network access server from attempting configuration command authorization.

When you log in to the graphical user interface of the Cisco Unified CME as an end user to change the settings on the phone, the system checks for the user credentials in the AAA configuration. If the user credentials are not configured in the AAA configuration, it will not allow you to make the changes. Use the **no aaa authorization config-commands** command in order to allow only users configured under AAA the permission to make changes to the configuration.

This command presents no real security risks. The device log in remains restricted, so only people that have access to the device are able to log in and make changes. The users of your phone system that have access to the GUI, do not have access to the routers CLI with their credentials, so there is no chance that the configuration might obtain errors by disabling **aaa authorization config-commands**.

Another alternate solution is to add the user to the AAA database. If you add the user to the AAA database, they can configure Cisco Unified CME through the GUI, and the error message does not appear.

## Error: Unable to login as administrator to the Cisco CallManagerExpress at site 'local'.

### Problem

After you log in to Cisco Unified CME server, this error message appears when you select **Configure > Phone** or **Configure > Extensions** using the Web GUI:

```
Site Name: local
Error: Unable to login as administrator to the Cisco CallManagerExpress at site 'local'.
Details: CME login failed
```

**Note:** When you select **Configure > Users**, it works without issue.

## Solution

In order to resolve this issue, add this command under the Cisco Unified CME configuration:

```
configure terminal
ip http authentication enable
```

This issue can also occur if Cisco Unified CME is not able to synchronize with the information on CUE GUI. Make sure that the web admin password and the host name are correctly configured in the Call Manager Express parameters under CUE GUI.

## Error: login to callmanager express failed with the new values

### Problem

You receive this error when you log in to Cisco Unified CME via Cisco Unity Express (CUE):

```
Error: login to callmanager express failed with the new values. check the
new call manager express configuration and enter correct values.
```

Or

```
Error: Unable to login as administrator to the Cisco CallManagerExpress at
site 'local'.
Details: Login failed. Hostname not configured.
```

### Solution

In order to resolve this issue, loading the GUI files to the GUI folder in flash.

## CME GUI Displays a Blank Screen

### Problem

In a CME/CUE environment, CUE functions fine. However, when you use the CUE GUI to configure the phones or extensions, the screen appears gray with *view window* displayed in the left corner.

### Solution

This issue can occur in the **directory entry name** command under **telephony-service**, the *name* value is entered with quotation marks. Remove the quotation marks from the directory entry name to resolve the issue.

**Note:** The value for the *name* field in the command **directory entry name** should be configured in the following way: 1 to 24 alphanumeric characters, including spaces. Name cannot include opening or closing quotation marks (`, ', ", or ").

**Note:** Also, make sure that the GUI files are loaded into the flash.

## Error: Login to CallManager Express as administrator failed.

### Problem

The Cisco Unified CME/CUE GUI does not open, or you are unable to log in to the Cisco Unified CME/CUE GUI, and you receive this error:

```
Login to CallManager Express as administrator failed.  
Check your CallManager Express configuration. Connection refused.
```

### Solution

Verify these items in order to resolve this issue:

- Check the Cisco Unified CME GUI files to make sure the versions are correct. If they are incorrect, download the correct versions, and copy the files over to the flash.
- Make sure the firewall or ACLs or NAT configuration are not blocking any relevant traffic.
- Check if the browser is configured with the correct security settings and uses the latest version of Java.
- Make sure the file names use the correct case. The file system is case sensitive; that is, the file system considers *readme.txt* and *README.TXT* as two different files.
- Make sure there is route between Cisco Unified CME and CUE; if required, you must add a static route.
- Make sure that the **ip http server** and **ip http path flash:** commands are configured in the CME.

## Error: LOGIN FAILED, System is not Initialized

### Problem

You are unable to log in to CUE GUI, and you receive this error message: `LOGIN FAILED, System is not Initialized`. Only Administrator logins are allowed.

### Solution

Make sure the admin user is part of Administrator group. You can create the user account admin and assign to the Administrator group.

## Related Information

- [Cisco Unified Communications Manager Express Troubleshooting TechNotes](#)
- [Voice Technology Support](#)
- [Voice and Unified Communications Product Support](#)
- [Technical Support & Documentation – Cisco Systems](#)

---

[Contacts & Feedback](#) | [Help](#) | [Site Map](#)

© 2014 – 2015 Cisco Systems, Inc. All rights reserved. [Terms & Conditions](#) | [Privacy Statement](#) | [Cookie Policy](#) | [Trademarks of Cisco Systems, Inc.](#)

