

Unity Connection Media Convergence Server (MCS) 7835 I Series Indicator Light Problem Diagnosis

Contents

[Introduction](#)

[Problem](#)

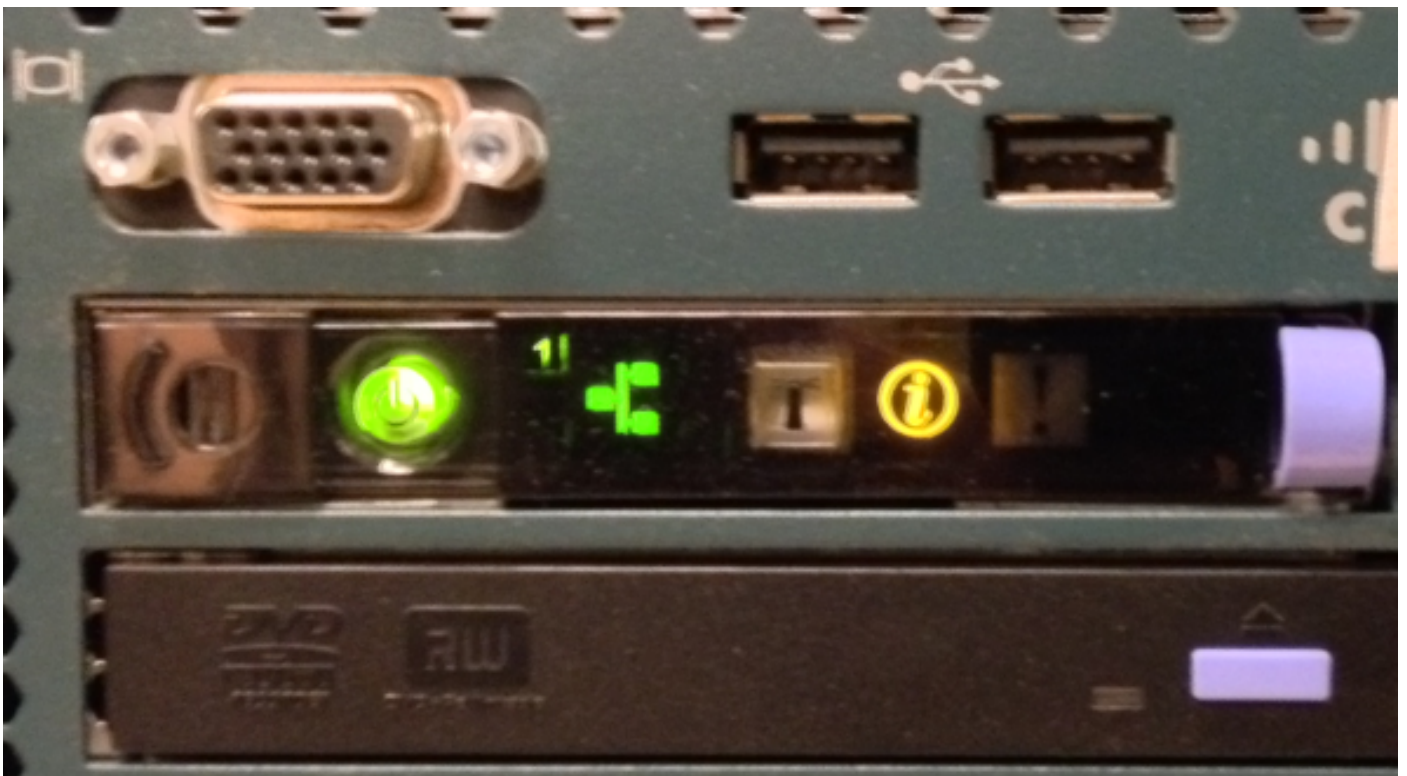
[Solution](#)

Introduction

This document describes how to diagnose a problem with the indicator light on Cisco Unity Connection Media Convergence Server (MCS) 7835 I series.

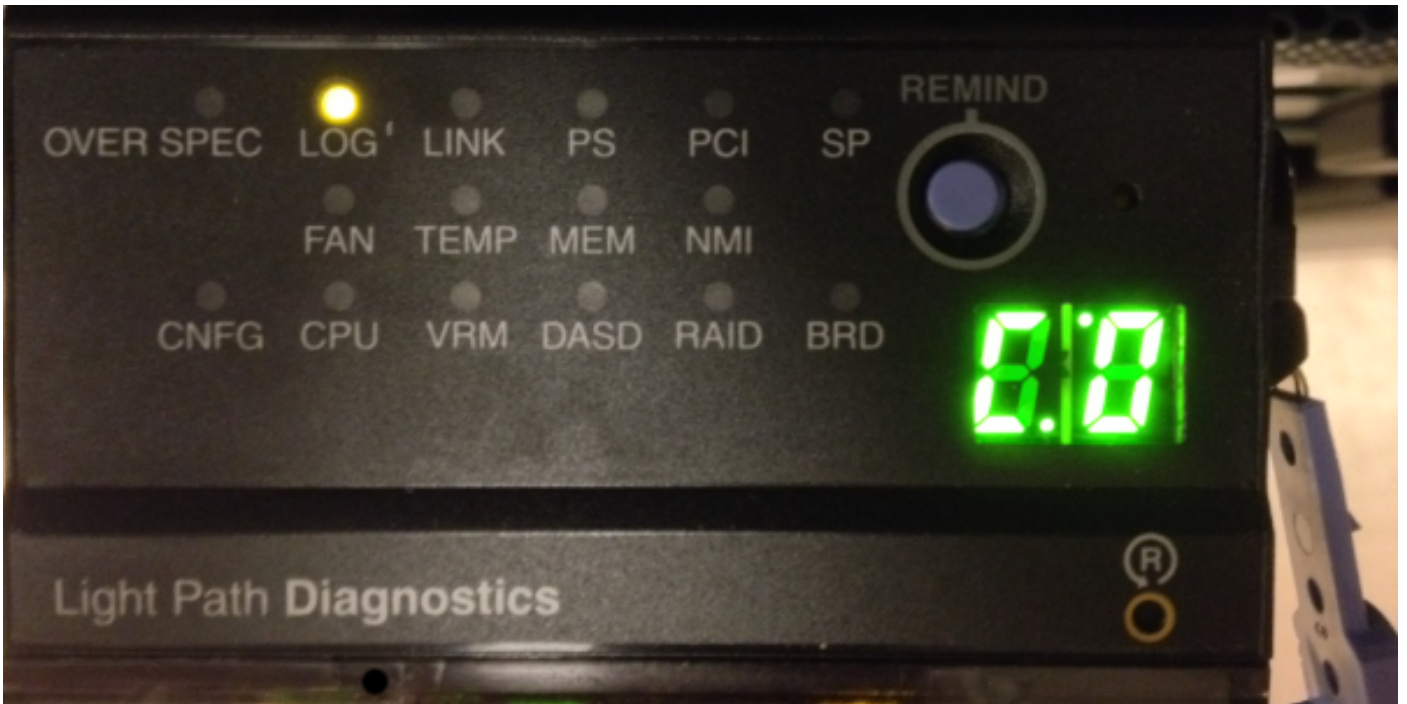
Problem

On MCS 7835 I series, a yellow indicator light is turned on as shown in this image:



You can see an indicator light turned on when you pull out the panel. In this case, the light is turned on because the system event log is full.

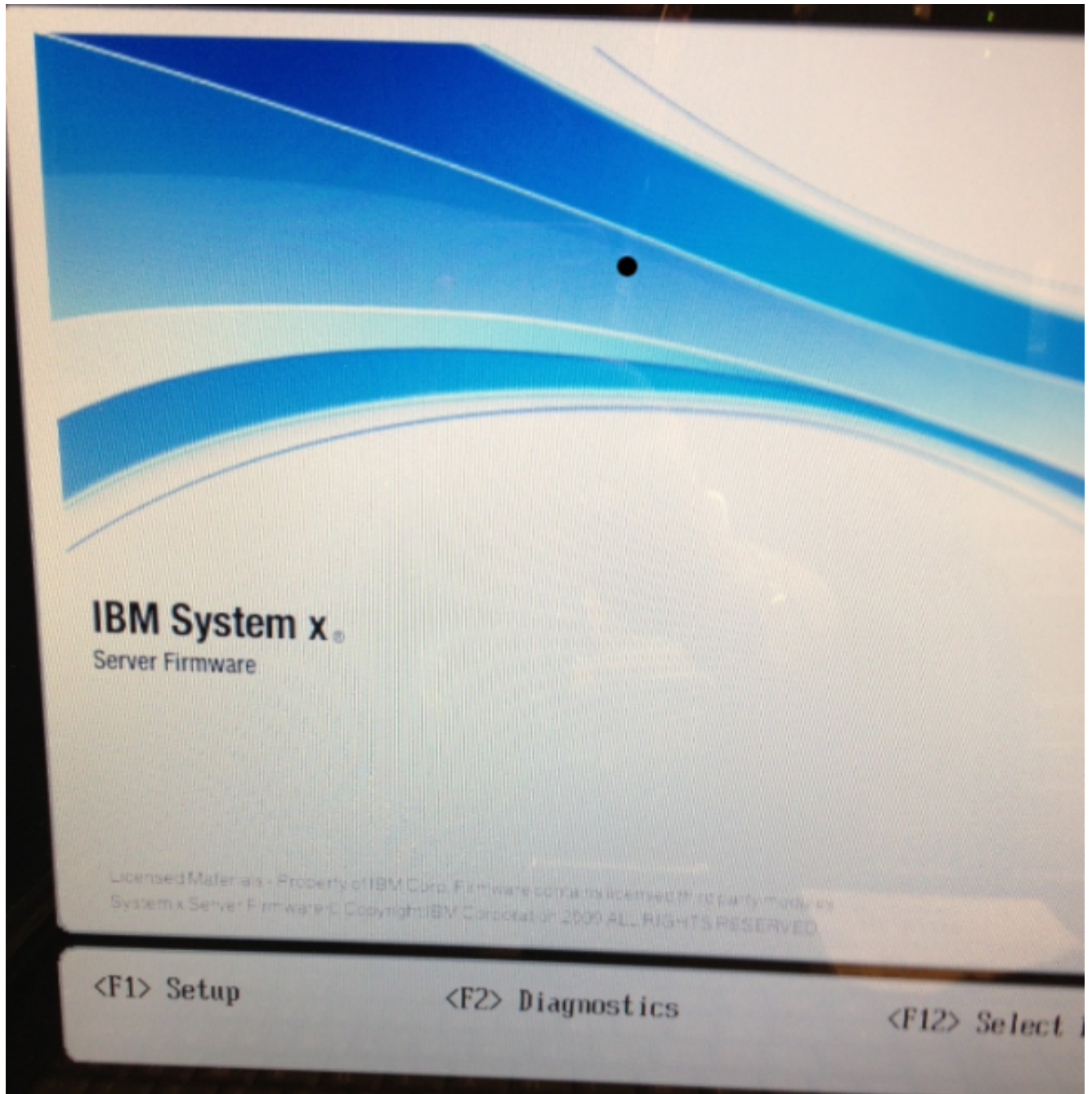
Note: IBM has confirmed that the light is turned on when the system event log is full.



Solution

As mentioned earlier, an indicator light is turned on because the system event logs are full. Complete these steps in order to clear the system event logs:

1. During the boot process, press **F1** when this screen appears to enter BIOS:



2. Once you press F1, choose **System Event Logs**:

System Configuration and Boot Management

System Information

System Settings

Date and Time

Start Options

Boot Manager

System Event Logs

User Security

Save Settings

Restore Settings

Load Default Settings

Exit Setup

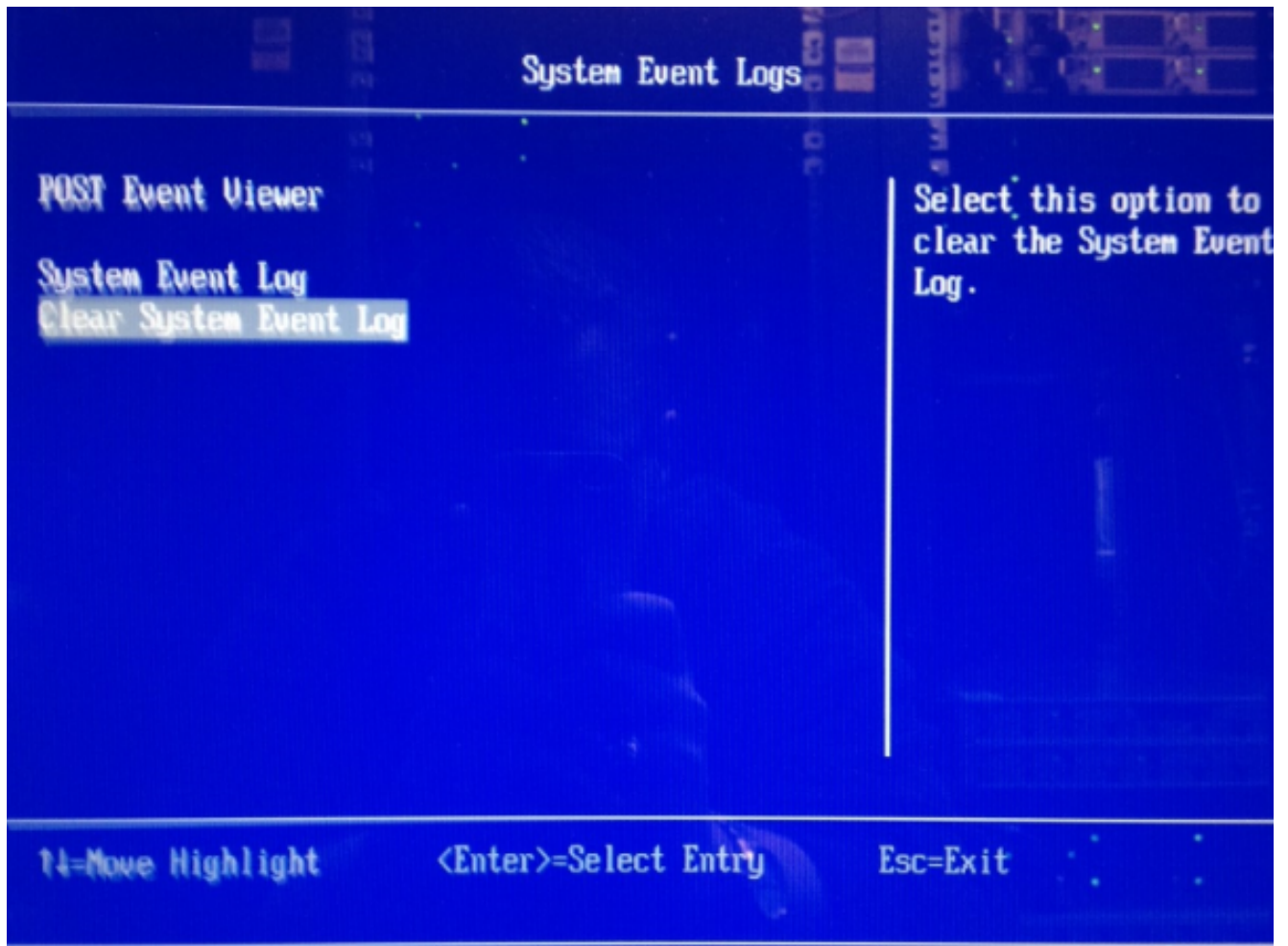
Select
view of
System

↑↓=Move Highlight

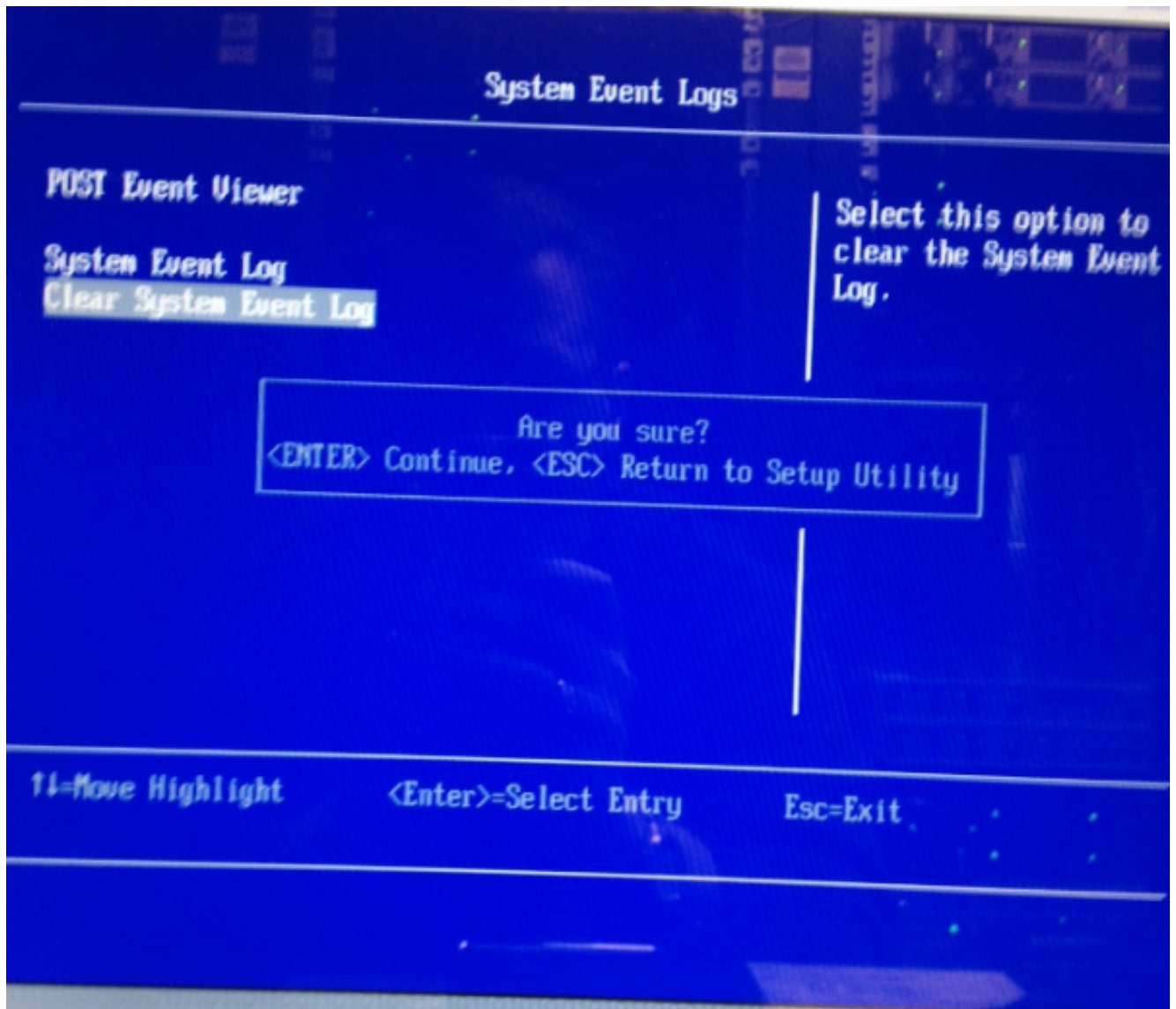
<Enter>=Select Entry

<ESC>=Exit

3. Choose the **Clear System Event Log** option in order to clear the system event log from this screen:



4. Press **Enter** when it prompts you to confirm the delete request:



5. Press **Esc** in order to go back to the main BIOS screen.
6. Press **Esc** again to exit the BIOS. The system continues its boot process.