

Setup Wizard Configuration on the WAP121 and WAP321 Access Points

Objective

The Setup Wizard is a built-in feature that is used to help with the initial configuration of the WAP device. The setup wizard makes it very simple to configure settings. The step-by-step process of the setup wizard guides you through the configuration all the basic settings necessary to run the WAP device.

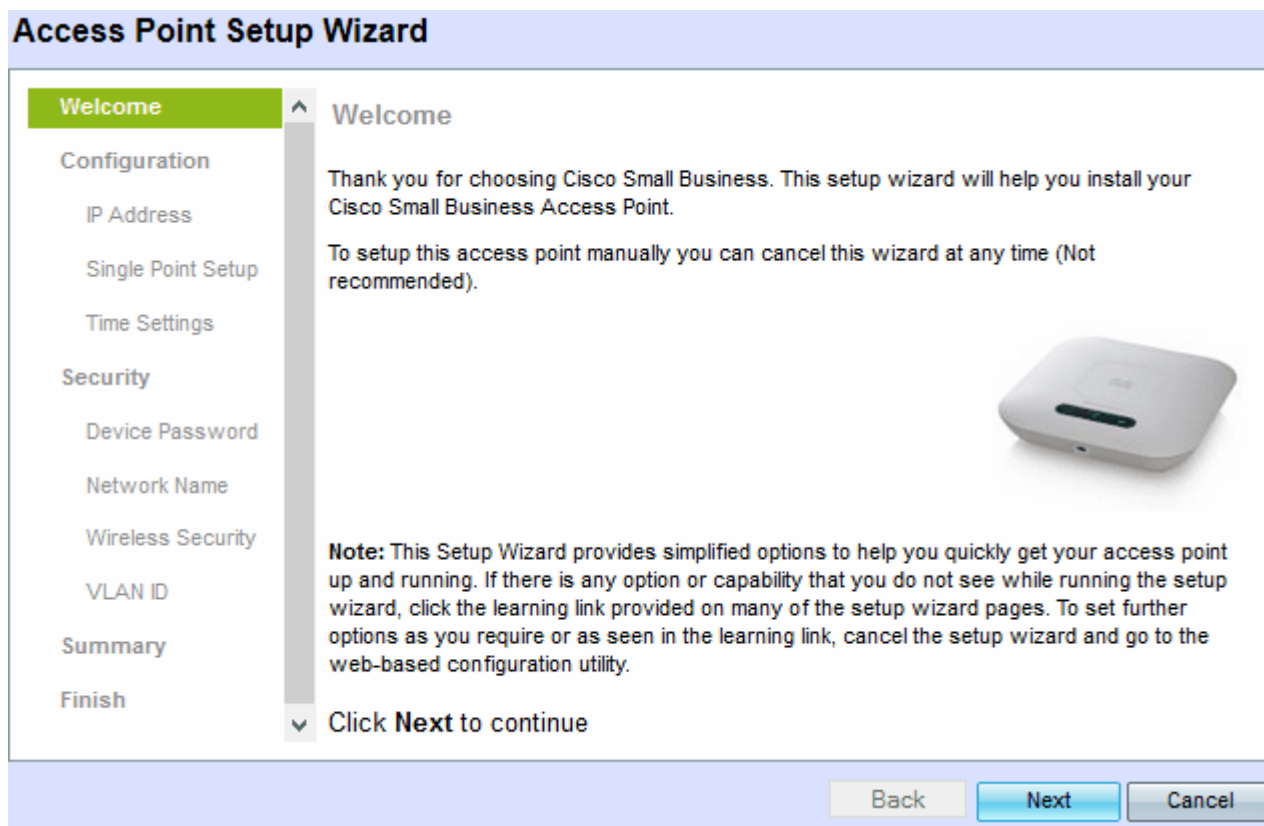
This article explains how to configure WAP121 and WAP321 device with Setup Wizard.

Applicable Devices | Firmware Version

- WAP121 | 1.0.3.4 ([Download latest](#))
- WAP321 | 1.0.3.4 ([Download latest](#))

Setup Wizard

Step 1. Log in to the Access Point Configuration Utility and choose **Run Setup Wizard**. The *Access Point Setup Wizard* window appears:



Step 2. Click **Next** to continue. The *Configure Device - IP Address* window appears.

Access Point Setup Wizard

Welcome

Configuration

IP Address

Single Point Setup

Time Settings

Security

Device Password

Network Name

Wireless Security

VLAN ID

Summary

Finish

Configure Device - IP Address

Select either Dynamic or Static IP address for your device.

Dynamic IP Address (DHCP) (Recommended)

Static IP Address

Static IP Address: . . .

Subnet Mask: . . .

Default Gateway: . . .

DNS: . . .

Secondary DNS (optional): . . .

[? Learn more about the different connection types](#)

Click **Next** to continue

Back Next Cancel

Step 3. Click the radio button that corresponds to the method you want to use to determine the IP address of the WAP.

- Dynamic IP Address (DHCP) (Recommended) - The IP address of the WAP is assigned by a DHCP server.
- Static IP Address - Allows you to create a fixed (static) IP address for the WAP. A static IP address does not change.

Note: If Dynamic IP Address is clicked then, skip to Step 9.

Access Point Setup Wizard

Welcome

Configuration

IP Address

Single Point Setup

Time Settings

Security

Device Password

Network Name

Wireless Security

VLAN ID

Summary

Finish

Configure Device - IP Address

Select either Dynamic or Static IP address for your device.

Dynamic IP Address (DHCP) (Recommended)

Static IP Address

Static IP Address: . . .

Subnet Mask: . . .

Default Gateway: . . .

DNS: . . .

Secondary DNS (optional): . . .

[? Learn more about the different connection types](#)

Click **Next** to continue

Step 4. Enter the IP address of the WAP in the Static IP Address field. This IP address is created by you and should not be used by another device in the network.

Step 5. Enter the subnet mask of the IP address in the Subnet Mask field.

Step 6. Enter the IP address of the default gateway for the WAP in the Default Gateway field. The default gateway is usually the private IP address assigned to your router.

Step 7. (Optional) If you want to access web pages outside of your network enter the IP address of the primary domain name system (DNS) in the DNS field, the IP address of the DNS server should be given by your Internet service provider (ISP).

Step 8. (Optional) In the Secondary DNS field, enter the IP address of the secondary DNS.

Step 9. Click **Next**. The *Single Point Setup -- Set A Cluster* window appears.

Access Point Setup Wizard

Welcome

Configuration

✓ IP Address

Single Point Setup

Time Settings

Security

Device Password

Network Name

Wireless Security

VLAN ID

Summary

Finish

Single Point Setup -- Set A Cluster

A cluster provides a single point of administration and lets you view, deploy, configure, and secure the wireless network as a single entity, rather than as a series of separate wireless devices.

Create a New Cluster
Recommended for a new deployment environment.

New Cluster Name:

AP Location:

Join an Existing Cluster
Recommended for adding new wireless access points to the existing deployment environment.

Existing Cluster Name:

AP Location:

Do not Enable Single Point Setup
Recommended for single device deployments or if you prefer to configure each device individually.

Click **Next** to continue

Back Next Cancel

Step 10. Click the desired radio button you wish to use. The options are:

- **Create a New Cluster** – Used to create a new cluster to secure the wireless network as a single entity.
 - New Cluster Name - Enter the name of the cluster in the New Cluster Name field.
 - AP Location – Enter the location of the AP in the AP Location field.
- **Join an Existing Cluster** - Used to add a new device to an existing cluster.
 - Existing Cluster Name - Enter the name of the cluster that is already created in the Existing Cluster Name field.
 - AP Location - Enter the location of the AP in the AP Location field.
- **Do not Enable Single Point Setup** - Used to disable the cluster setup and configure all the devices individually.

Step 11. Click **Next** to continue. The *Configure Device - Set System Date And Time* window appears.

Access Point Setup Wizard

Welcome

Configuration

- ✓ IP Address
- ✓ Single Point Setup
- Time Settings**

Security

- Device Password
- Network Name
- Wireless Security
- VLAN ID

Summary

Finish

Configure Device - Set System Date And Time

Enter the time zone, date and time.

Time Zone:

Set System Time: Network Time Protocol (NTP) Manually

NTP Server:

[? Learn more about time settings](#)

Click **Next** to continue

Step 12. Choose a time zone from the Time Zone drop-down list.

Step 13. Click the radio button that corresponds with the method you wish to use to set the time of the WAP.

- Network Time Protocol (NTP) - The WAP gets the time from a NTP server.
- Manually- The time is manually entered into the WAP.

Note: If Manually is clicked then, skip to Step 15.

Step 14. Enter the domain name of the NTP server that provides the date and time in the NTP Server field.

Access Point Setup Wizard

Welcome

Configuration

- ✓ IP Address
- ✓ Single Point Setup
- Time Settings**

Security

- Device Password
- Network Name
- Wireless Security
- VLAN ID

Summary

Finish

Configure Device - Set System Date And Time

Enter the time zone, date and time.

Time Zone:

Set System Time: Network Time Protocol (NTP)
 Manually

System Date:

System Time: :

[? Learn more about time settings](#)

Click **Next** to continue

Step 15. If Manually is chosen, then from the System Date drop-down lists, choose the month, day, and year respectively.

Step 16. If Manually is chosen, choose the hour and minutes respectively from the System Time drop-down lists.

Step 17. Click **Next**. The *Enable Security - Set Password* window appears.

Access Point Setup Wizard

Welcome

Configuration

- ✓ IP Address
- ✓ Single Point Setup
- ✓ Time Settings
- Device Password**

Security

- Network Name
- Wireless Security
- VLAN ID

Summary

Finish

Enable Security - Set Password

The administrative password protects your access point from unauthorized access. For security reasons, you should change the access point password from its default settings. Please write this password down for future reference.

Enter a new device password:

New password needs at least 8 characters composed of lower and upper case letters as well as numbers/symbols by default.

New Password:

Confirm Password:

Password Strength Meter: Below Minimum

Password Complexity: Enable

[? Learn more about passwords](#)

Click **Next** to continue

Step 18. Enter a new password that is required for administrative access on the WAP in the New

Password field.

Step 19. Re-enter the same password in the Confirm Password field.

The Password Strength Meter field displays vertical bars that change as you enter the password. The available options are:

- Red - The minimum password complexity requirement is not met.
- Orange - The minimum password complexity requirement is met, but the strength of password is weak.
- Green - The minimum password complexity requirement is met, and the strength of password is strong.

Step 20. (Optional) To enable password complexity, check the **Enable** check box. This requires that the password is at least 8 characters long and composed of lower and upper case letters and number/symbols.

Step 21. Click **Next** to continue. The *Enable Security - Name Your Wireless Network* window appears.

The screenshot shows the 'Access Point Setup Wizard' window. On the left is a navigation pane with sections: Welcome, Configuration (with sub-items IP Address, Single Point Setup, Time Settings), Security (with sub-item Device Password), Network Name (highlighted), Wireless Security, VLAN ID, Summary, and Finish. The main content area is titled 'Enable Security - Name Your Wireless Network'. It contains the text: 'The name of your wireless network, known as an SSID, identifies your network so that wireless devices can find it.' Below this is the instruction 'Enter a name for your wireless network:' followed by a text input field labeled 'Network Name (SSID):' containing the text 'networkname'. A note below the field says 'For example: MyNetwork'. There is a blue link with a question mark icon: '? Learn more about network names'. At the bottom of the main area, it says 'Click **Next** to continue'. At the bottom right of the window are three buttons: 'Back', 'Next' (highlighted in blue), and 'Cancel'.

Step 22. Enter the Service Set Identifier (SSID) of the wireless network in the Network Name (SSID) field. The SSID is the name of the wireless local area network.

Step 23. Click **Next**. The *Enable Security - Secure Your Wireless Network* window appears.

Access Point Setup Wizard

Welcome

Configuration

- ✓ IP Address
- ✓ Single Point Setup
- ✓ Time Settings

Security

- ✓ Device Password
- ✓ Network Name
- Wireless Security
- VLAN ID

Summary

Finish

Enable Security - Secure Your Wireless Network

Select your network security strength.

Best Security (WPA2 Personal - AES)
Recommended for new wireless computers and devices that support this option. Older wireless devices might not support this option.

Better Security (WPA Personal - TKIP/AES)
Recommended for older wireless computers and devices that might not support WPA2.

No Security (Not recommended)

Enter a security key with 8-63 characters.


Below Minimum

Show Key as Clear Text

[? Learn more about your network security options](#)

Click **Next** to continue

Back
Next
Cancel

Step 24. Click the radio button that corresponds with the network security you would like to apply to your wireless network.

- **Best Security (WPA2 Personal - AES)** - Provides the best security and is recommended if your wireless devices support this option. The WPA2 Personal uses Advanced Encryption Standard (AES) and a Pre-Shared Key (PSK) among the clients. It uses a new encryption key for each session which makes it difficult to crack.
- **Better Security (WPA Personal - TKIP/AES)** - Provides security when there are older wireless devices that do not support WPA2. The WPA Personal uses Advanced Encryption Standard (AES) and Temporal Key Integrity Protocol (TKIP). It uses IEEE 802.11i Wi-Fi Standard.
- **No Security (Not recommended)** - Wireless network does not require a password and can be accessed by anyone.

Note: If No Security is clicked then, skip to step 27.

Step 25. Enter the password for your network in the Security Key field. Adjacent, a strength meter shows the strength of the entered password. Stronger password provides the high security.

Step 26. (Optional) To see the password as you type, check the **Show Key as Clear Text** check box.

Step 27. Click **Next**. The *Enable Security - Assign The VLAN ID For Your Wireless Network* window appears.

Access Point Setup Wizard

Welcome

Configuration

- ✓ IP Address
- ✓ Single Point Setup
- ✓ Time Settings

Security

- ✓ Device Password
- ✓ Network Name
- ✓ Wireless Security

VLAN ID

Summary

Finish

Enable Security - Assign The VLAN ID For Your Wireless Network

By default, the VLAN ID assigned to the management interface for your access point is 1, which is also the default untagged VLAN ID. If the management VLAN ID is the same as the VLAN ID assigned to your wireless network, then the wireless clients associated with this specific wireless network can administer this device. If needed, an access control list (ACL) can be created to disable administration from wireless clients.

Enter a VLAN ID for your wireless network:

VLAN ID: (Range: 1 - 4094)

[Learn more about vlan ids](#)

Click **Next** to continue

Back Next Cancel

Step 28. Enter the VLAN ID for the network in the VLAN ID field. If the management VLAN is same as the VLAN assigned to the wireless network, you can administer the device. You can also use Access Control Lists (ACL) to disable the administration from wireless clients.

Step 29. Click **Next**. The *Summary - Confirm Your Settings* window appears.

Access Point Setup Wizard

Welcome

Configuration

- ✓ IP Address
- ✓ Single Point Setup
- ✓ Time Settings

Security

- ✓ Device Password
- ✓ Network Name
- ✓ Wireless Security
- ✓ VLAN ID

Summary

Finish

Summary - Confirm Your Settings

Please review the following settings and ensure the data is correct.

Network Name (SSID):	networkname
Network Security Type:	WPA2 Personal - AES
Security Key:	*****
VLAN ID:	45

Note: The AP Radio will be enabled after clicking Submit.

Click **Submit** to enable settings on your Cisco Small Business Access Point

Back Submit Cancel

Step 30. (Optional) If you would like to edit a setting you made, click **Back**.

Step 31. (Optional) If you would like to exit the Setup Wizard and undo all the changes you made,

click **Cancel**.

Step 32. Review the network settings. Click **Submit** to enable the settings on the WAP. A loading bar will appear as the WAP enables your settings. When the WAP is finished, the *Device Setup Complete* window appears.

The screenshot shows the 'Access Point Setup Wizard' interface. On the left is a vertical navigation pane with sections: Welcome, Configuration, Security, and Summary. Under 'Configuration', 'IP Address', 'Single Point Setup', and 'Time Settings' are checked. Under 'Security', 'Device Password', 'Network Name', 'Wireless Security', and 'VLAN ID' are checked. The 'Finish' option at the bottom is highlighted in green. The main content area is titled 'Device Setup Complete' and features a green checkmark icon followed by a congratulatory message: 'Congratulations, your access point has been set up successfully. We strongly recommend that you save these settings by writing them down or by copying and pasting them into a text document. You will need these settings later when you add other wireless computers or devices to your network.' Below this is a table of settings: Cluster Name: New; Network Name (SSID): networkname; Network Security Type: WPA2 Personal - AES; Security Key: *****. To the right of the table is an image of a white wireless access point. A note below the table reads: 'Note: To configure WPS, Click "Run WPS" on the Getting Started page, under Initial Setup.' At the bottom of the wizard, there are three buttons: 'Back', 'Finish' (highlighted in blue), and 'Cancel'.

Cluster Name:	New
Network Name (SSID):	networkname
Network Security Type:	WPA2 Personal - AES
Security Key:	*****

Step 33. Click **Finish** to exit the Setup Wizard.