

# Smartport Best Practices for Sx250, Sx350, SG350X, and Sx550X Series Switches

## Objective:

The objective of this document is to explain some best practices when dealing with Smartports on Sx250, Sx350, SG350X, and Sx550X series switches.

## Applicable Devices | Software Version

- Sx250 Series | 2.5.7 ([download latest](#))
- Sx350 Series | 2.5.7 ([download latest](#))
- SG350X Series | 2.5.7 ([download latest](#))
- Sx550X Series | 2.5.7 ([download latest](#))

## Introduction

Let's talk about the Smartport feature and if it is right for you!

As you may know, Smartports apply a preconfigured setup to a switch port based on the type of device that you connect. Auto Smartport lets the switch apply these configurations to interfaces automatically when it detects the device.

Smartports have preset configurations for a printer, desktop, guest, server, host, IP camera, IP phone, switch, router, and wireless access points.

Smartports are beneficial if you aren't setting up VLANs and you aren't sure what device you will be putting into the ports. That being said, if you are setting up VLANs and you know what devices will go into the ports, you may run into problems with the Smartport feature and you may want to [disable Smartport globally](#).

In many other situations, the Smartport feature can be a huge time-saver in a network. However, there may be times, even in a simple network, that it causes issues and makes things more complicated. We will sort through some options so you can configure the Smartport feature most effectively on your network.

For many of you, this feature was enabled on your switch by default. Keep reading to learn more.

## How to know if your Smartport feature is enabled

### Check your firmware version

If you have firmware version 2.5.5.47 and earlier, the Smartport feature is **enabled** by

default. So, unless you changed this setting, it is enabled.

If you have a 2.4.5.47 (or earlier) firmware version and you upgrade to the latest (released February 2021) 2.5.7 version (or later when available), the default setting will remain with the Smartport feature enabled.

If you purchase a router that has the 2.5.7 firmware version (or later), the firmware will have the Smartport feature **disabled** by default. This change was made because some customers didn't necessarily want to use the Smartport feature or it was causing an issue with connectivity and customers didn't realize it was enabled.

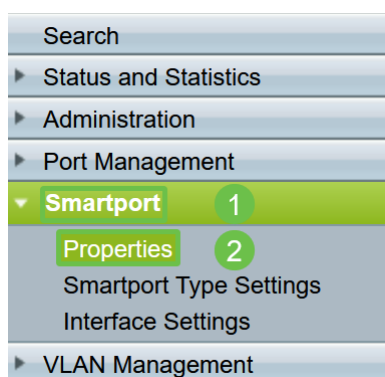
If you would like detailed steps for upgrading firmware, check out [Upgrade Firmware on a Switch](#).

## Manually check to see if the Smartport feature is enabled

If you aren't sure if you have the feature enabled, you can check.

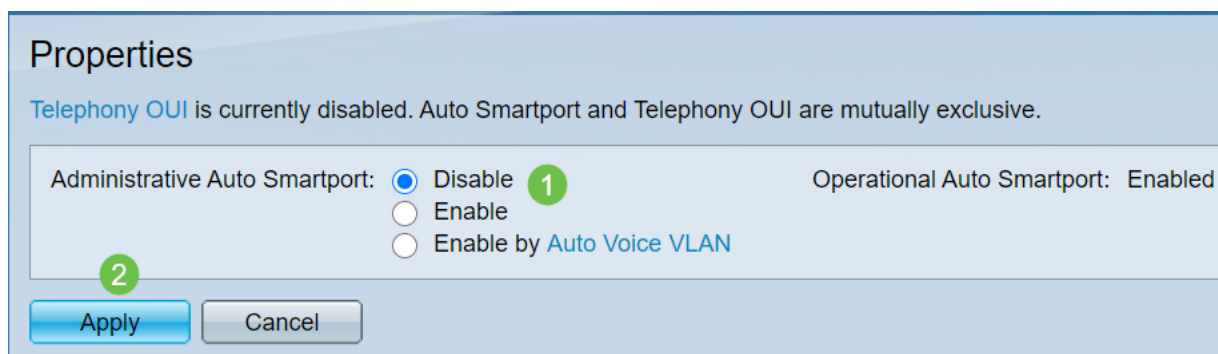
### Step 1

Navigate to **Smartport > Properties**.



### Step 2

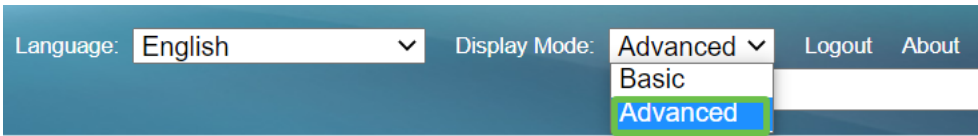
At this location, you can view the Smartport settings or simply [disable the feature](#) if you choose.



### Step 3 (Optional)

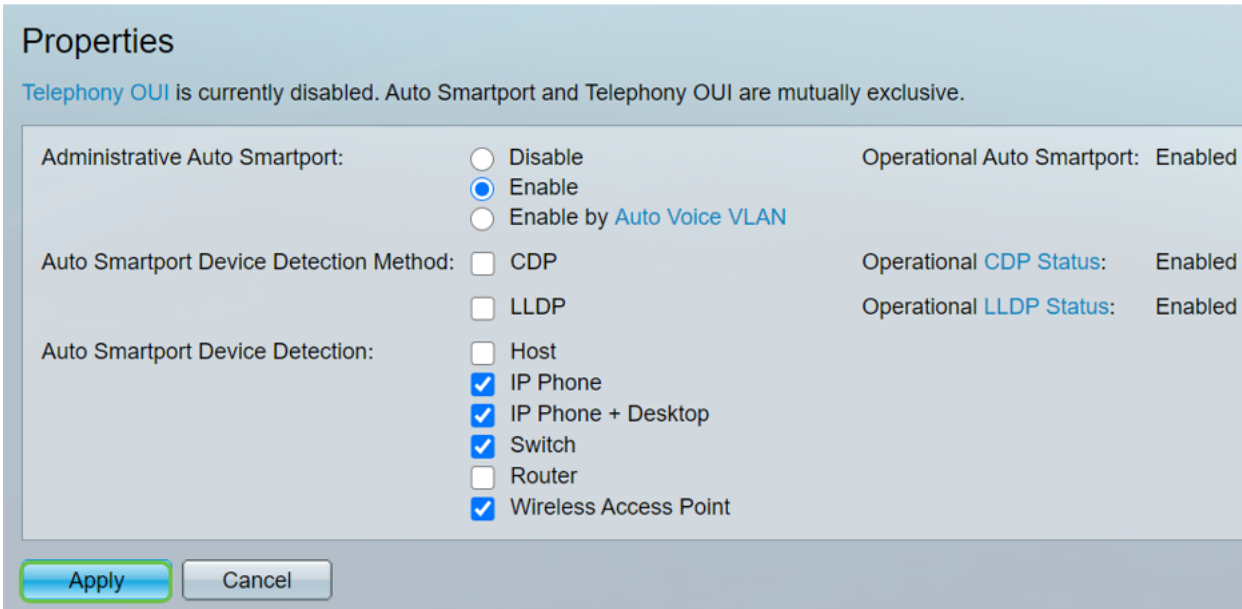
For more options, change Display Mode from *Basic* to *Advanced*. This is located in the

top-right corner of your screen.



#### Step 4 (Optional)

Make adjustments that best fit your network. Click **Apply**.



#### Step 5

To permanently save your configurations, click **Save** on the top right of your screen.



## Options for the Smartport feature

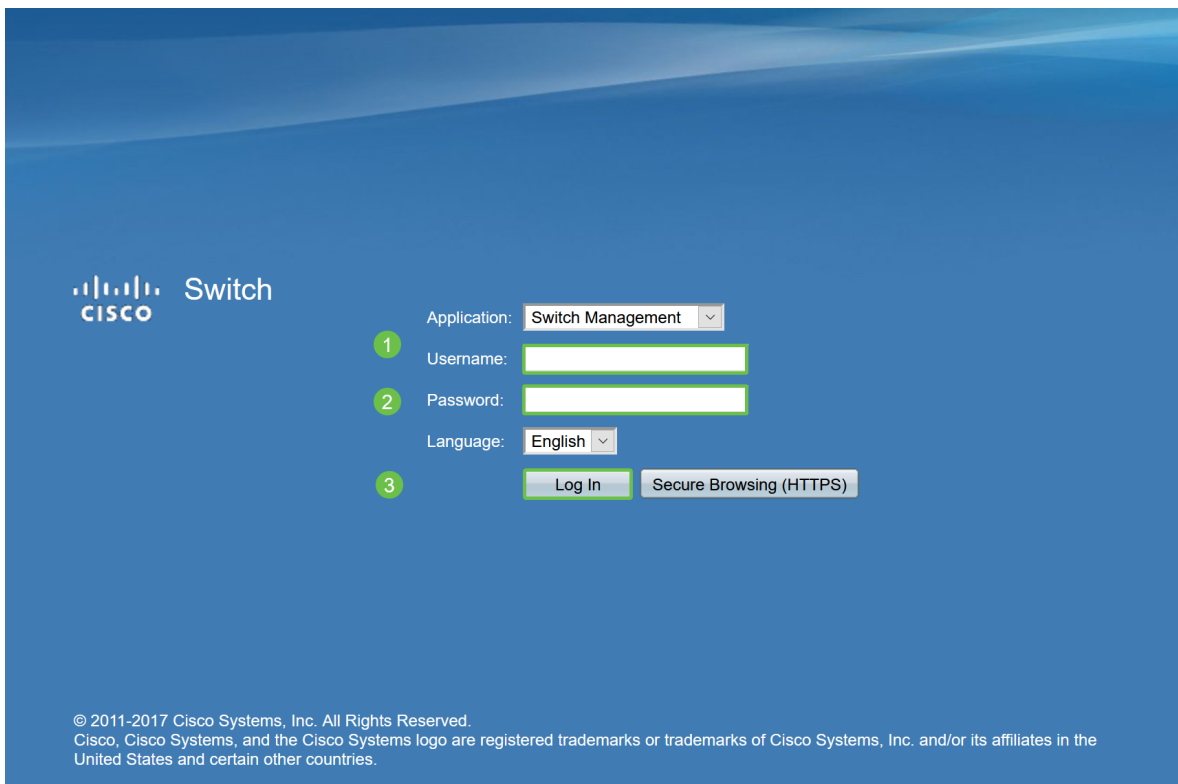
If you are unaware of what devices will be connected to switch or unaware of the network topology, as in what devices will be in the network, Smartport may be an effective option. In order to increase the efficacy of Smartport, you can enable or disable it by individual port, or globally for all ports.

### Configuring by port

If you are unaware of what device will be connected, identify which port the device will be connected to and configure the port.

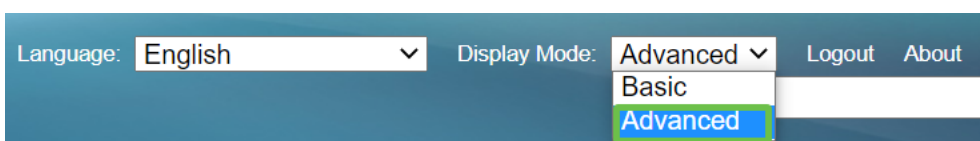
#### Step 1

Log into the Switch.



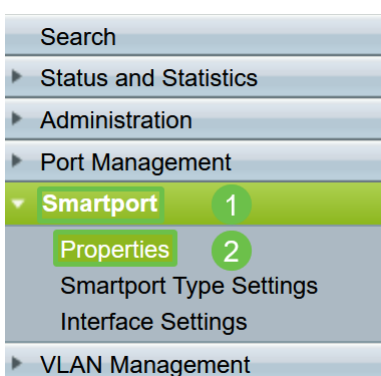
## Step 2

Once in the Web User Interface (UI), change Display Mode from *Basic* to *Advanced*. This is located in the top-right corner of your screen.



## Step 3

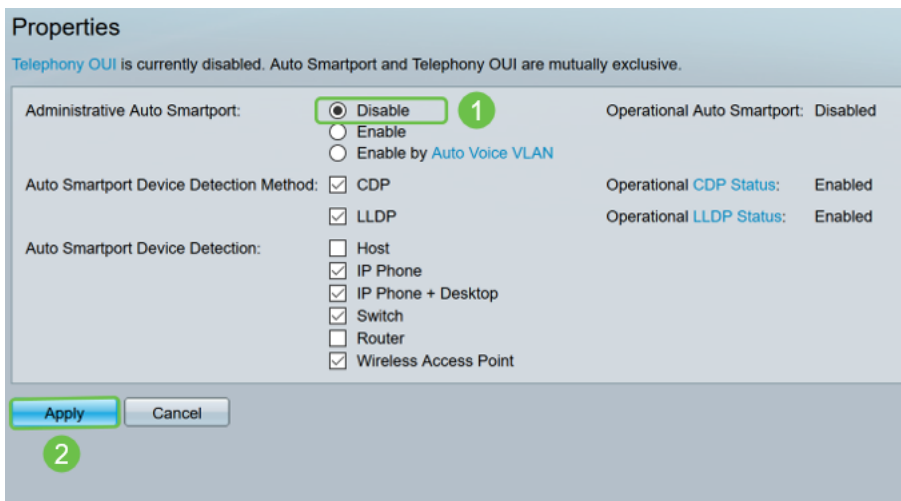
Choose **Smartport > Properties**.



## Step 4

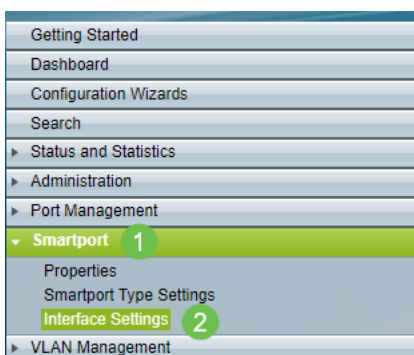
Select *Disable* next to *Administrative Auto Smartport*, to disable the Smartport globally on the switch. Click **Apply**.

This will disable the Smartport on all interfaces but will not affect manual VLAN configurations.



## Step 5

Go to **Smartport > Interface Settings**.



## Step 6

Once on Smartport interface settings, choose a port and click **Edit**.



## Step 7

Choose Auto Smartport on that interface if you are unaware of what type of device may be connected and that port will not be part of a VLAN.

Interface:  Unit 1  Port GE1  LAG 1

Smartport Type: IP Phone

Smartport Application: Auto Smartport **1**

Smartport Application Method: Static

Persistent Status:  Enable

**Macro Parameters**

Parameter 1 Name: \$max\_hosts

Parameter 1 Value: 10

Parameter 1 Description: The maximum number of allowed devices on the port

Parameter 2 Name: \$native\_vlan

Parameter 2 Value: 1

Parameter 2 Description: The untag VLAN which will be configured on the port

Parameter 3 Name: \$voice\_vlan

Parameter 3 Value: 1

Parameter 3 Description: The voice VLAN ID **2**

Apply Close Reset

## Step 8

To permanently save your configurations, click **Save** on the top right of your screen.



## Enable or disable the Smartport feature on all ports

### Step 1

Choose **Smartport > Properties**.

Search	
▶ Status and Statistics	
▶ Administration	
▶ Port Management	
▼ <b>Smartport</b> <b>1</b>	
<b>Properties</b> <b>2</b>	
Smartport Type Settings	
Interface Settings	
▶ VLAN Management	

### Step 2

Make sure you are in *Advanced* mode. This is located in the top-right corner of your screen.

Language: English	Display Mode: <b>Advanced</b>	Logout	About
	Basic		
	<b>Advanced</b>		

### Step 3

Select *Enable* or *Disable* next to *Administrative Auto Smartport*, to enable or disable the Smartport globally on the switch. Click the **Apply** button.

This will enable or disable the Smartport feature on all interfaces. If you choose to enable the feature, this may affect manual VLAN configurations.

Properties

Telephony OUI is currently disabled. Auto Smartport and Telephony OUI are mutually exclusive.

Administrative Auto Smartport:  Disable  Enable  Enable by Auto Voice VLAN

Operational Auto Smartport: Enabled

Auto Smartport Device Detection Method:  CDP  LLDP

Operational CDP Status: Enabled

Operational LLDP Status: Enabled

Auto Smartport Device Detection:  Host  IP Phone  IP Phone + Desktop  Switch  Router  Wireless Access Point

Apply Cancel

#### Step 4

To permanently save your configurations, click **Save** on the top right of your screen.



#### Conclusion

Smartport can be very convenient and can eliminate a lot of guesswork on unknown networks. This guide went over the best ways to configure Smartport in case it may be efficient for your network. If you encounter problems with your Smartports, check out [Troubleshoot Smartports on your Sx250, Sx350, SG350X, or Sx550X Series Switch](#).