

Get to Know the RV340W Dual WAN Gigabit VPN Router with Wireless



Introduction

The RV340W Dual WAN Gigabit VPN Router with Wireless is part of the RV34x Series and is the wireless counterpart of the RV340. It is easy-to-use, flexible, high-performance, and durable which makes this well suited for small businesses. Now with several added security features such as Web Filtering, Application Control, and IP Source Guard, the RV340W delivers highly secure, broadband, wired and wireless connectivity to small offices and remote employees. These new security features also provide the ease of fine-tuning permitted activity on the network.

This article aims to showcase the features and benefits of the RV340W Dual WAN Gigabit VPN Router with Wireless.

Product Features

- Wireless connectivity with four external radio antennas with dual-band.
- Application control to secure your network through sets of application policies.
- Web filtering to guard against malicious or non-work related websites. Filtering more than 27 billion URLs.
- Content filtering to restrict access to certain websites.
- Teleworker Client for the on-the-go worker.
- IP Security (IPsec) site-to-site VPN helps enables secure connectivity for remote employees and multiple offices.
- Strong security with proven stateful packet inspection (SPI) firewall and hardware encryption.

- Dual WAN ports
- Dual USB ports for backup and restore, and for 3G/4G modem failover or alternative primary connectivity.
- High-performance Gigabit Ethernet ports, enabling large file transfers and multiple users.
- Simple installation and intuitive web-based utility
- FindIT Network Management Support

Package Contents



a)



b)



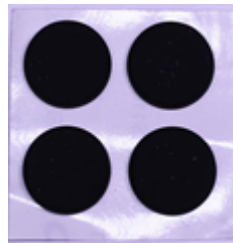
c)



d)



e)



f)

- a) RV340W Dual-WAN Gigabit VPN Router with Wireless
- b) Ethernet cable
- c) Quick Start Guide
- d) Power Adapter
- e) Console Cable
- f) 4 Foam Pads

Minimum Requirements

- A switch or router that has PoE support, PoE injector, or AC power adapter
- Java-enabled web browser for the web-based configuration

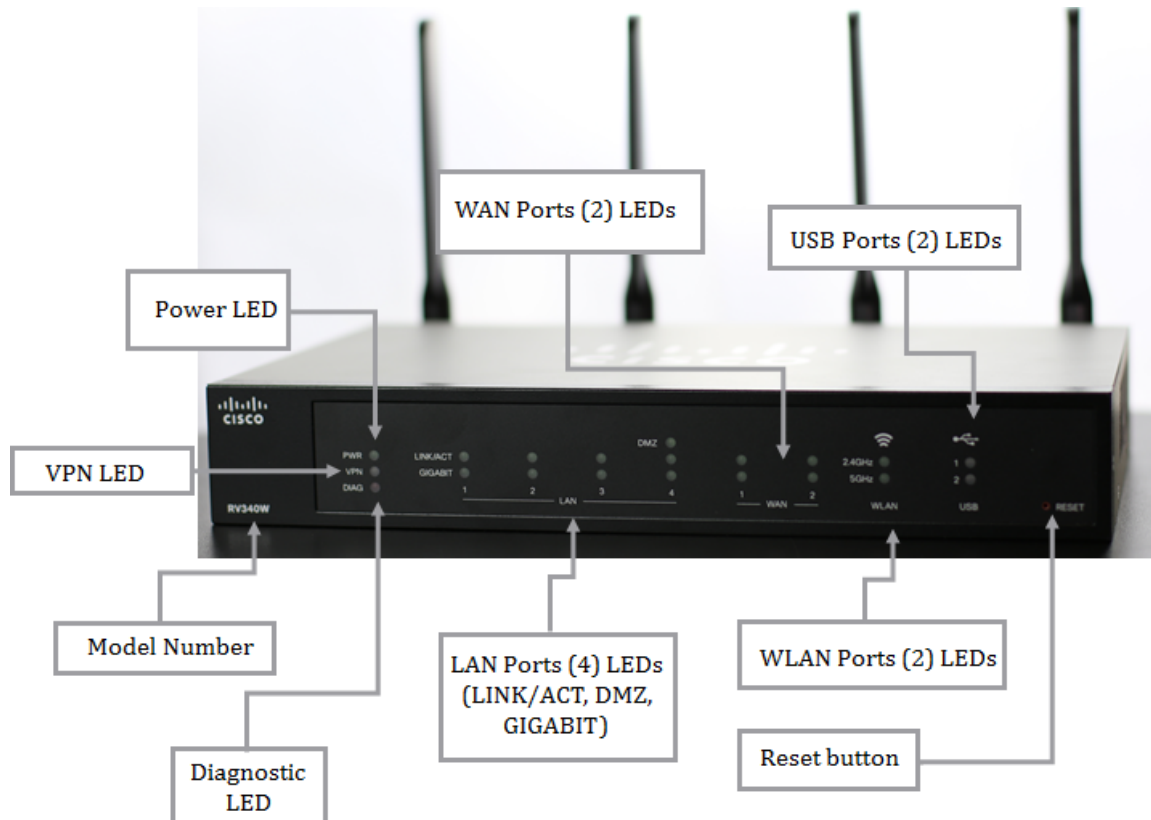
Default Settings

Username	cisco
Password	cisco
LAN IP Address	192.168.1.1
Fallback LAN IP	192.168.1.1
Subnetwork Mask	255.255.255.0

Product Views

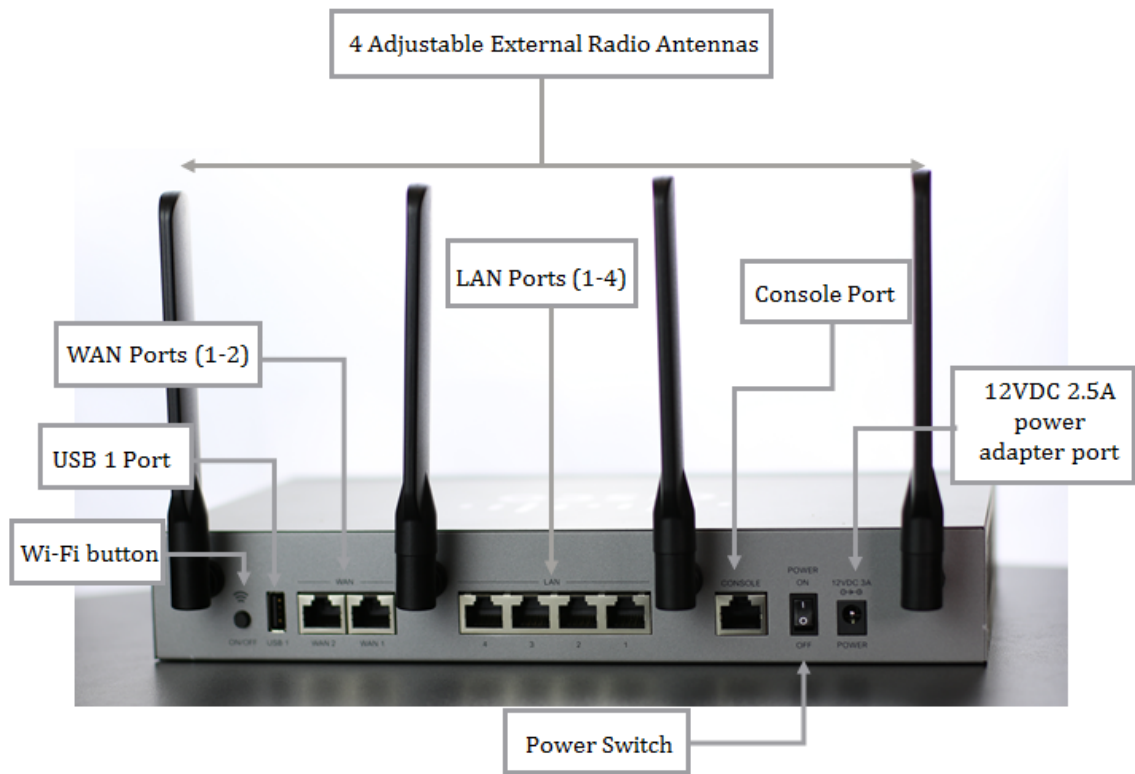
Front Panel View

The front panel shows the model number, the Reset button and several LEDs for Power, VPN, Diagnostics, LAN, WAN, WLAN, and USB.



Back Panel View

The back panel shows the Wi-Fi button, USB 1 port, WAN ports 1 and 2, LAN ports 1 to 4, console port, On and Off Switch, 12VDC 2.5A power adapter port, and the 4 adjustable external radio antennas.



Right Side Panel View



Technical Detail

Status LEDs

This LED indicates the status of the device depending on what state it is in.

Function	LED Name	LED Behavior
LINK/ACT and Speed	Top LED LAN1-4	GREEN <ul style="list-style-type: none"> • OFF – No link is detected • Blinking – Link is detected, Rx/Tx Data
GIGABIT	Bottom LED LAN1-4	GREEN <ul style="list-style-type: none"> • OFF – 10 M/100 M link is detected or no link

		<ul style="list-style-type: none"> • Solid – 1000 M link is detected
Power	PWR	<p>GREEN</p> <ul style="list-style-type: none"> • OFF – Device is powered OFF. • Solid – Powered ON and booted. • Blinking – Booting
DMZ	DMZ	<p>GREEN</p> <ul style="list-style-type: none"> • OFF – Device is OFF or DMZ is disabled. • Solid – DMZ is enabled.
VPN	VPN LED	<p>GREEN</p> <ul style="list-style-type: none"> • OFF – No power or no VPN tunnel has been defined or all VPN tunnels have been disabled. • Solid – At least one VPN tunnel is up. • Blinking – Rx/Tx Data <p>Amber</p> <ul style="list-style-type: none"> • Solid – No enabled VPN is up.
Diagnostic	DIAG	<p>RED</p> <ul style="list-style-type: none"> • OFF – No power or about to boot. • Slow blinking – Firmware is upgrading. • Fast blinking – The firmware upgrading is failing. • Solid – System has failed to boot with both active and inactive firmware images or in rescue mode.
USB	USB 1 and USB 2	<p>GREEN</p> <ul style="list-style-type: none"> • OFF – No power or no USB detected, or USB connected but not recognized. • Solid – USB is connected to the ISP and USB is recognized. • Blinking – Rx/Tx Data
WAN	WAN 1 and WAN 2	<p>GREEN</p> <ul style="list-style-type: none"> • OFF – 10 M / 100 M link is detected or no link • Solid – 1000 M link is detected
WLAN	2.4 GHz and 5 GHz	<p>GREEN</p> <ul style="list-style-type: none"> • OFF – Not broadcasting • Solid – Rx/Tx Data

Note: To know more about the product specifications of the RV340W, click [here](#).

Related Contents

- [Configure Web Filtering on the RV34x Series Router](#)
- [Configure Application Control on the RV34x Series Router](#)
- [Configure Content Filtering on the RV34x Series Router](#)
- [Configure IP Source Guard on the RV34x Series Router](#)
- [Configure a Virtual Local Area Network \(VLAN\) Settings on an RV34x Series Router](#)
- [Manage Schedules on the RV34x Series Router](#)
- [Perform a Diagnostic Evaluation on an RV34x Series Router](#)