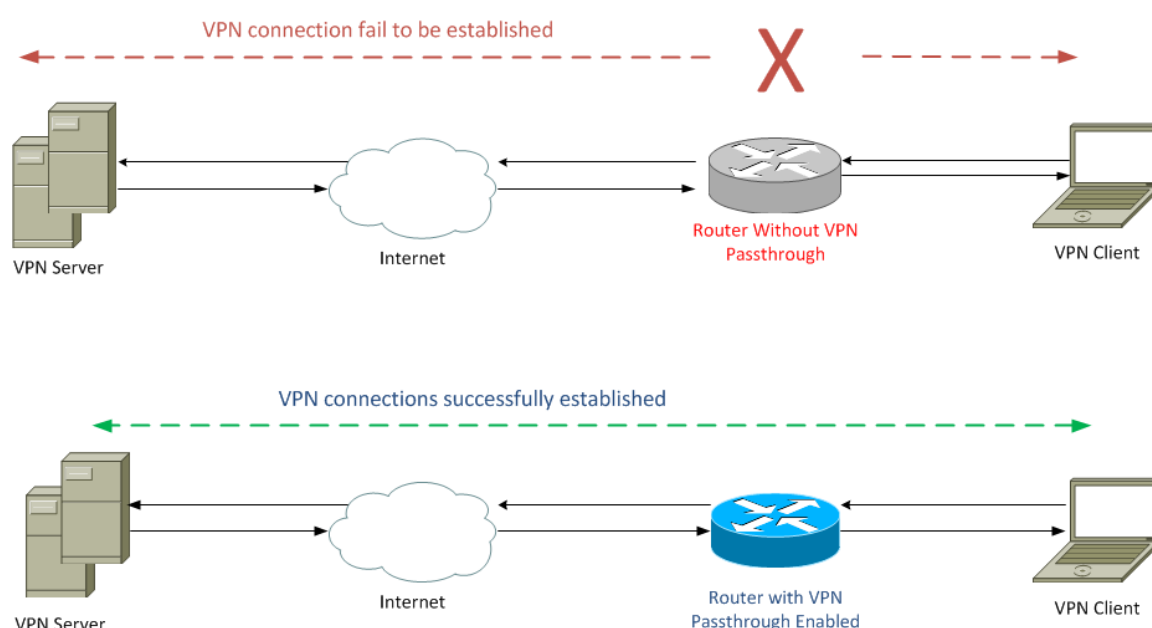


Configuration of Virtual Private Network (VPN) Passthrough on the RV130 and RV130W Routers

Objective

A VPN Passthrough allows VPN traffic to pass through a device and allow clients to connect to the VPN server. VPN Passthrough is required for a VPN connection to be successful, since the RV130 and RV130W use NAT (Network Address Translation).

Before configuring VPN Passthrough, a VPN must already be set up on your device. To learn how to configure a VPN, refer to the article [Basic VPN Setup on RV130 and RV130W](#).



The objective of this document is to show you how to enable or disable VPN Passthrough on the RV130 and RV130W Routers.

Applicable Devices

- RV130
- RV130W

Software Version

- v1.0.1.3

Enable or Disable VPN Passthrough

Step 1. Log into the web configuration utility and choose **VPN > VPN Passthrough**. The *VPN Passthrough* page opens:

The image shows a configuration window titled "VPN Passthrough". It contains three rows of settings, each with a label and a checked checkbox followed by the word "Enable":
IPSec Passthrough: Enable
PPTP Passthrough: Enable
L2TP Passthrough: Enable
At the bottom of the window are two buttons: "Save" and "Cancel".

Step 2. In the *IPSec Passthrough* field, the **Enable** check box is checked by default. IPSec (Internet Protocol Security) is a suite of protocols that allows secure exchange of packets. If you do not want any IPSec traffic to pass through the device, uncheck this check box.

This image is identical to the first one, but the checkbox for "IPSec Passthrough" is circled in red to highlight it.

Step 3. In the *PPTP Passthrough* field, the **Enable** check box is checked by default. PPTP (Point-to-Point Tunneling Protocol) is a way to transmit PPP (Point-to-Point Protocol) packets over a VPN. If you do not want any PPTP traffic to pass through the device, uncheck this box.

This image is identical to the first one, but the checkbox for "PPTP Passthrough" is circled in red to highlight it.

Step 4. In the *L2TP Passthrough* field, the **Enable** check box is checked by default. L2TP (Layer 2 Tunneling Protocol) is a tunneling protocol used to transmit PPP packets in VPNs. If you do not want any L2TP traffic to pass through the device, uncheck this box.

VPN Passthrough

IPSec Passthrough: Enable

PPTP Passthrough: Enable

L2TP Passthrough: Enable

Save

Cancel

Step 5. Click **Save** to save any changes made on *VPN Passthrough* page.

VPN Passthrough

IPSec Passthrough: Enable

PPTP Passthrough: Enable

L2TP Passthrough: Enable

Save

Cancel