

Setup a PPTP VPN Connection on a Windows PC with RV016, RV042, RV042G and RV082 VPN Routers

Objective

A Virtual Private Network (VPN) establishes a private network that can send data securely through the Internet. For this, a tunnel can be made between two computers or networks that use encryption and authentication techniques. It can be either Site to Site (VPN router at one office connects to a VPN router at a remotely located office) or Remote Access (computer with VPN client software connects to a VPN router). The Point-to-Point Tunneling Protocol (PPTP) is a method for implementing virtual private networks. PPTP uses a control channel over Transmission Control Protocol (TCP) and a Generic Routing Encapsulation (GRE) tunnel operating to encapsulate Point-to-Point Protocol (PPP) packet. This protocol is used to provide security levels and remote access levels comparable with typical VPN products.

This article explains how to set up a PPTP VPN connection on any computer that uses a Windows OS.

Applicable Devices

- RV016
- RV042
- RV042G
- RV082

Software version

- v4.2.1.02

Setup a PPTP VPN Connection

Step 1. Log into the web configuration utility and choose **VPN > PPTP Server**. The *PPTP Server* page opens:

PPTP Server

Enable PPTP Server

IP Address Range

Range Start :

Range End :

PPTP Server

Username :

New Password :

Confirm New Password :

Connection List

Username	Remote Address	PPTP IP Address
----------	----------------	-----------------

Step 2. Check the **Enable PPTP Server** check box to allow PPTP VPN tunnel.

PPTP Server

Enable PPTP Server

IP Address Range

Range Start :

Range End :

PPTP Server

Username :

New Password :

Confirm New Password :

Connection List

Username	Remote Address	PPTP IP Address
----------	----------------	-----------------

Step 3. In the Range Start field, enter the start range of LAN addresses to assign to the PPTP VPN clients. The default value is 192.168.1.200.

PPTP Server

Enable PPTP Server

IP Address Range

Range Start :

Range End :

PPTP Server

Username :

New Password :

Confirm New Password :

Connection List

Username	Remote Address	PPTP IP Address
----------	----------------	-----------------

Step 4. In the Range End field, enter the end range of LAN addresses to assign to the PPTP VPN clients. The default value is 192.168.1.204.

PPTP Server

Enable PPTP Server

IP Address Range

Range Start :

Range End :

PPTP Server

Username :

New Password :

Confirm New Password :

Step 5. In the Username field, enter a name for the PPTP VPN user.

Step 6. In the New Password field, enter the password for the currently configured user.

Step 7. In the Confirm New Password field, re-enter the password for the currently configured user.

PPTP Server

Enable PPTP Server

IP Address Range

Range Start :

Range End :

PPTP Server

Username :

New Password :

Confirm New Password :

Step 8. Click **Add to list** to add the currently configured user to the PPTP VPN user list.

PPTP Server

Enable PPTP Server

IP Address Range

Range Start :

Range End :

PPTP Server

Username :

New Password :

Confirm New Password :

user1

Connection List

Username	Remote Address	PPTP IP Address
----------	----------------	-----------------

Step 9. Click **Save** to save your settings.

Step 10. (Optional) To add a new user to your PPTP server, click **Add New** and repeat Steps 5 to 7.

PPTP Server

Enable PPTP Server

IP Address Range

Range Start :

Range End :

PPTP Server

Username :

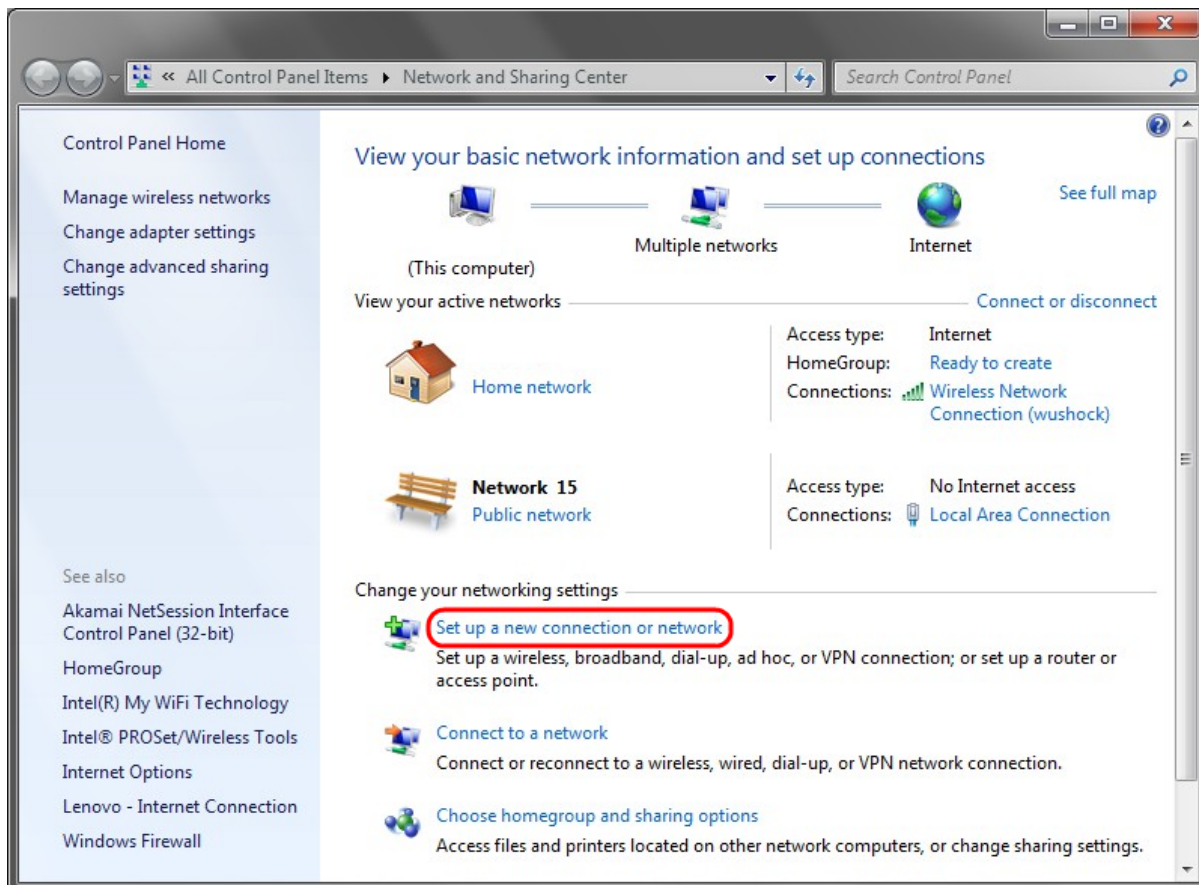
New Password :

Confirm New Password :

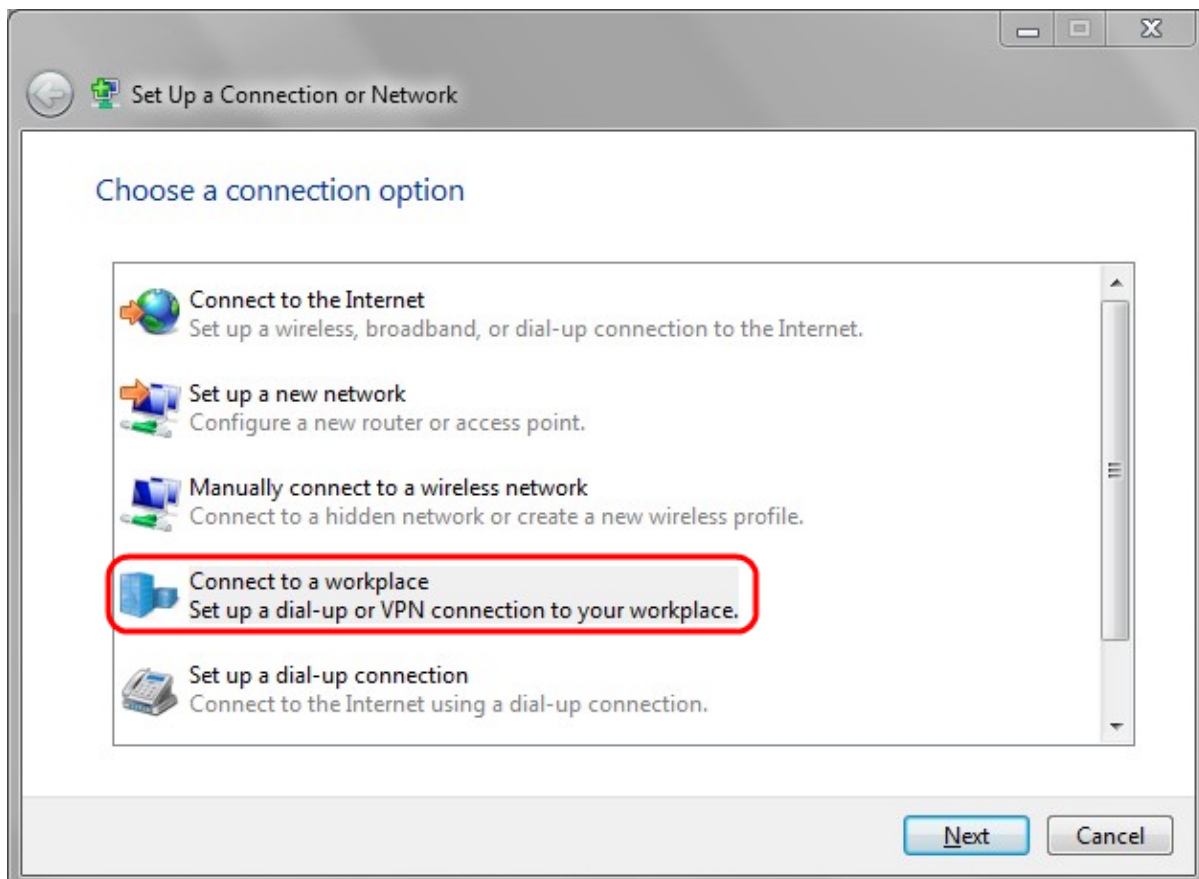
user1

Step 11. (Optional) To delete a user, choose the user and click **Delete**.

Step 12. On your Windows PC, choose **Control Panel > Network and Sharing Center**.

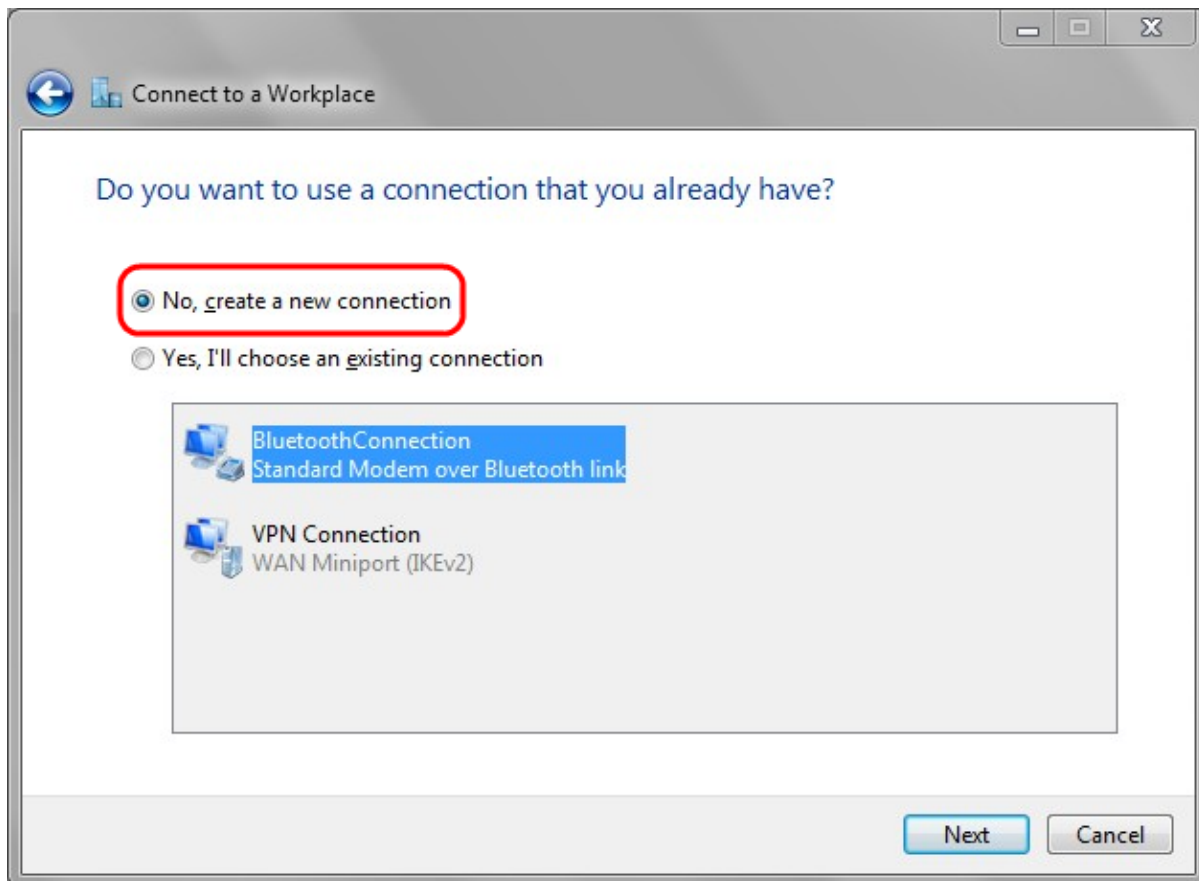


Step 13. Click **Set up a new connection or network** to set up the VPN connection.



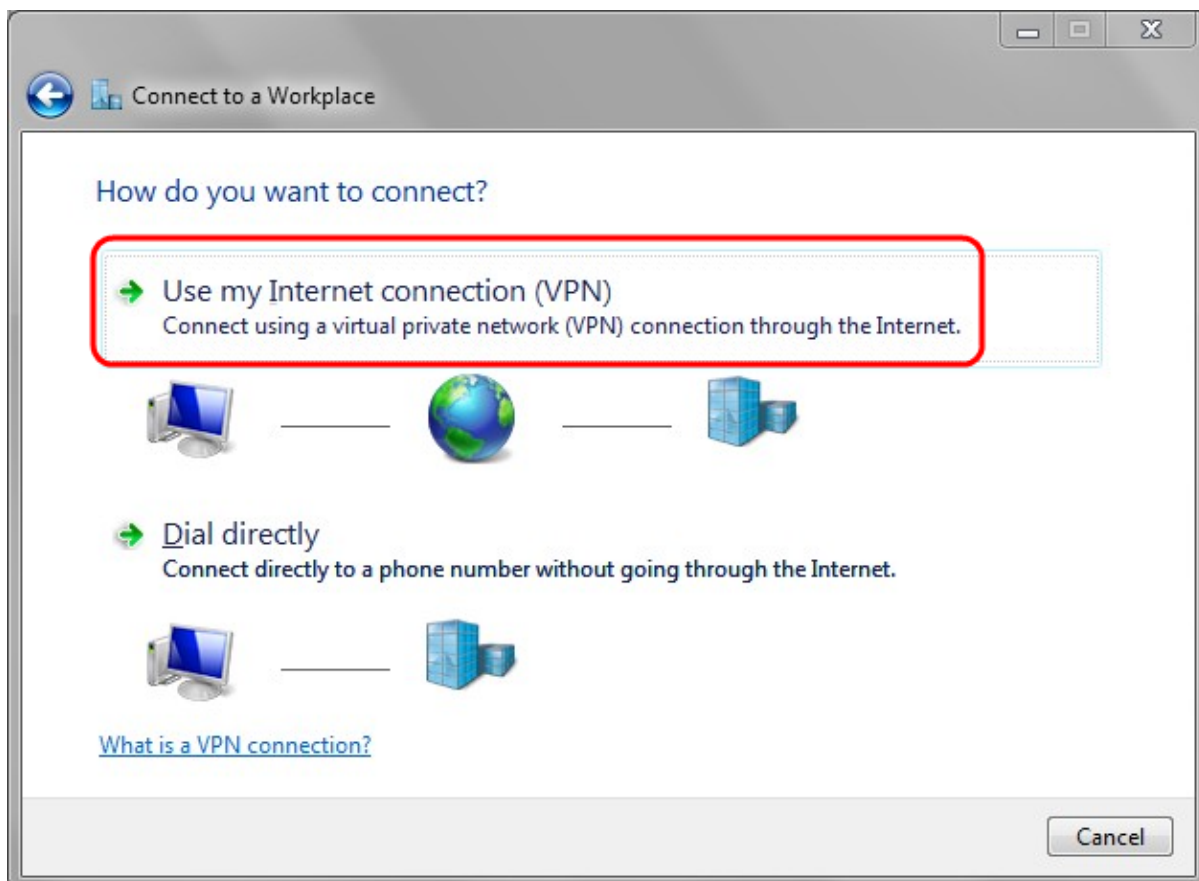
Step 14. Choose **Connect to a workplace** from the Choose a Connection Option list.

Step 15. Click **Next** to continue.

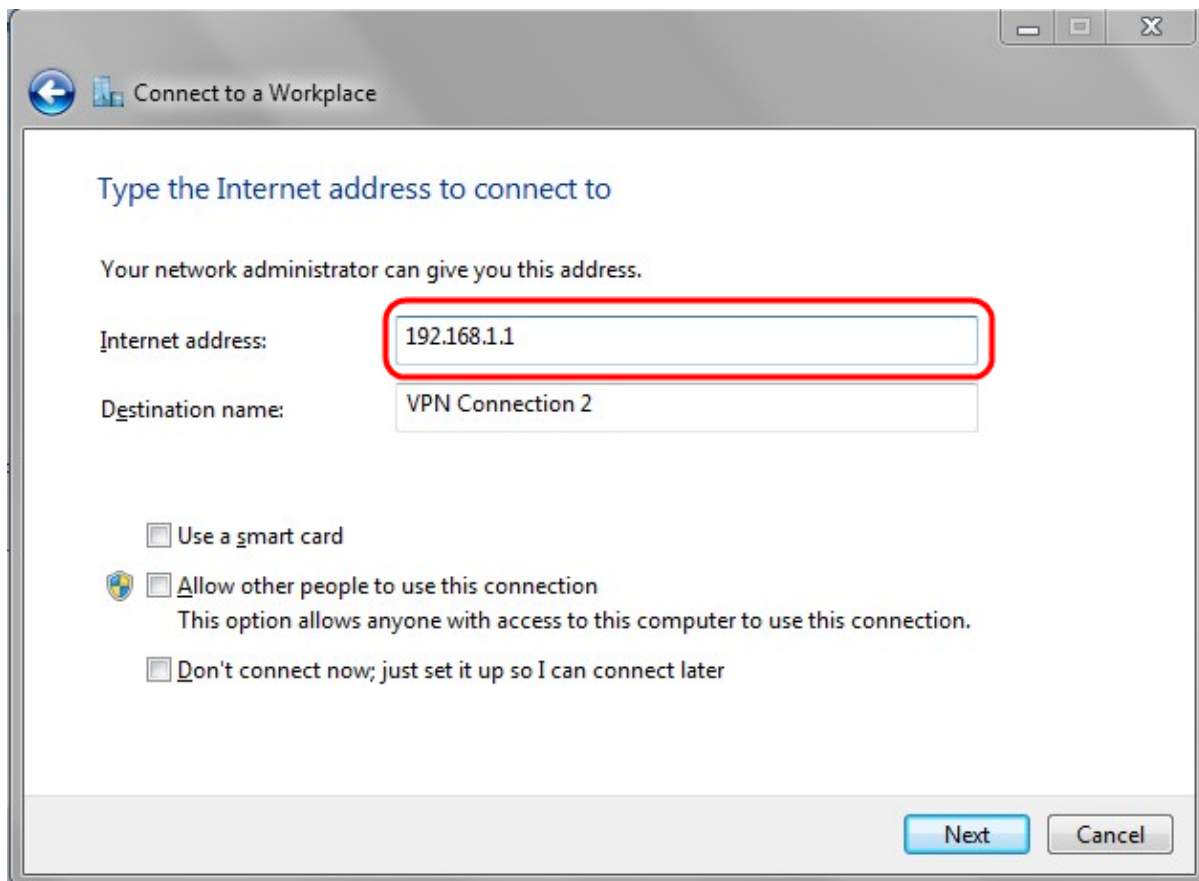


Step 16. Click **No, create a new connection**.

Step 17. Click **Next** to continue.



Step 18. Click **Use my Internet connection (VPN)** from the How do you want to connect option list.



Step 19. In the Internet address field, enter the host name or public IP address of the VPN router.

Step 20. Click **Next** to continue.

Connect to a Workplace

Type your user name and password

User name: user1

Password: ●●●●●●

Show characters

Remember this password

Domain (optional): 192.168.1.1

Connect Cancel

Step 21. In the User name field, enter the username that you have configured in the router.

Step 22. In the Password field, enter the password that you have configured in the router.

Step 23. Click **Connect** to establish VPN connection. A status is displayed confirming the VPN connection.