

Install and Configure FindIT Network Manager and FindIT Network Probe on Microsoft Hyper-V Manager

Objective

The Cisco FindIT Network Management provides tools that help you easily monitor, manage, and configure your Cisco 100 to 500 Series network devices such as switches, routers, and wireless access points (WAPs) using your web browser. It also notifies you about device and Cisco Support notifications such as the availability of new firmware, device status, network settings updates, and any connected Cisco-devices that are no longer under warranty or covered by a support contract.

FindIT Network Management is a distributed application which is comprised of two separate components or interfaces: one or more Probes referred to as FindIT Network Probe and a single Manager called FindIT Network Manager.

An instance of FindIT Network Probe installed at each site in the network performs network discovery, and communicates directly with each Cisco device. In a single site network, you may choose to run a standalone instance of FindIT Network Probe. However, if your network is composed of multiple sites, you may install FindIT Network Manager at a convenient location and associate each Probe with the Manager. From the Manager interface, you can get a high-level view of the status of all the sites in your network, and connect to the Probe installed at a particular site when you wish to view a detailed information for that site.

This article provides instructions on how to install and configure FindIT Network Manager and FindIT Network Probe on Microsoft Hyper-V Manager.

Install FindIT Network Manager on Microsoft Hyper-V Manager

Install Virtual Switch on Microsoft Hyper-V Manager

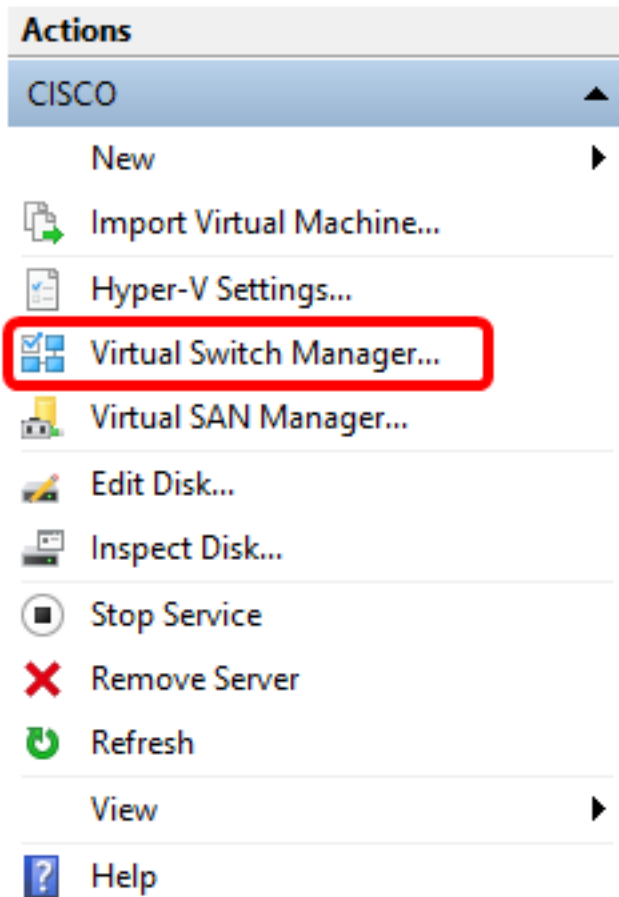
Follow these steps to deploy the Virtual Hard Disk (VHD) Virtual Machine (VM) image to Microsoft Hyper-V Manager.

Step 1. Launch the Hyper-V Manager on your Windows Server or computer.




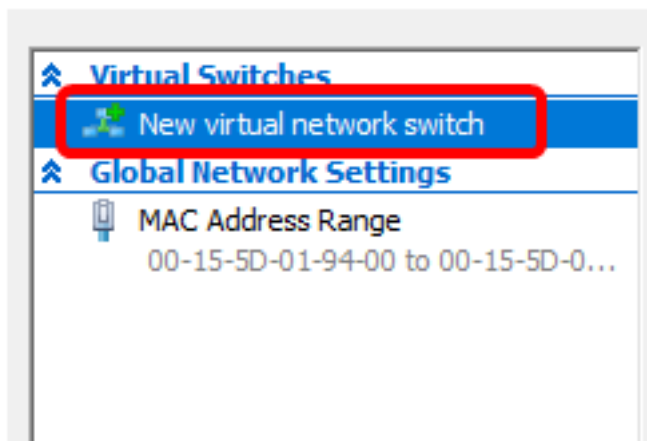
Note: In this example, Windows 10 is used.

Step 2. Choose **Virtual Switch Manager**.



Step 3. Under the Virtual Switches area, click **New virtual network switch** to add a virtual switch.

 Virtual Switch Manager for CISCO



Step 4. On the left side of the window, enter the name of the virtual switch in the *Name* field.

Virtual Switch Properties

Name:
Intel Virtual Switch

Notes:

Note: In this example, Intel Virtual Switch is used.

Step 5. Click **External network** then choose an adapter from the drop-down list.

Connection type

What do you want to connect this virtual switch to?

External network:
Intel(R) 82579LM Gigabit Network Connection

Allow management operating system to share this network adapter

Internal network

Private network

Note: In this example, Intel(R) 82579LM Gigabit Network Connection is chosen.

Step 6. Make sure the **Allow management operating system to share this network adapter** check box is checked. This means that the management operating system will have access to the chosen physical network adapter.

Connection type

What do you want to connect this virtual switch to?


External network:
Intel(R) 82579LM Gigabit Network Connection

Allow management operating system to share this network adapter

Internal network

Private network

Step 7. Click **Apply** then click **OK**.

 Virtual Switch Properties

Name:
Intel(R) 82579LM - Virtual Switch

Notes:

Connection type
What do you want to connect this virtual switch to?

External network:
Intel(R) 82579LM Gigabit Network Connection

Allow management operating system to share this network adapter

Internal network

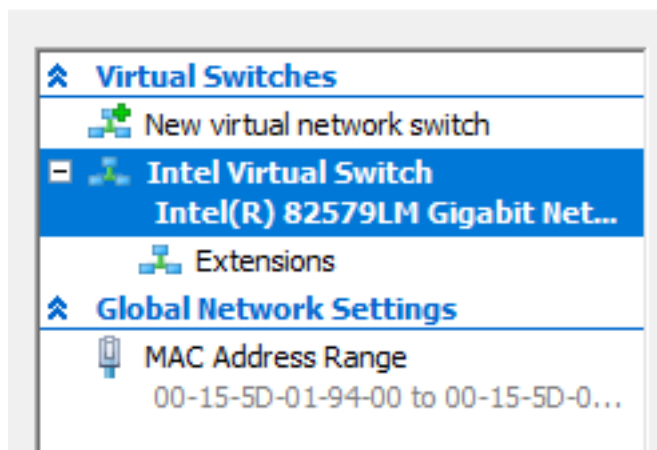
Private network

VLAN ID
 Enable virtual LAN identification for management operating system

The VLAN identifier specifies the virtual LAN that the management operating system will use for all network communications through this network adapter. This setting does not affect virtual machine networking.

The new virtual switch should be displayed under the Virtual Switches area.

Virtual Switch Manager for CISCO

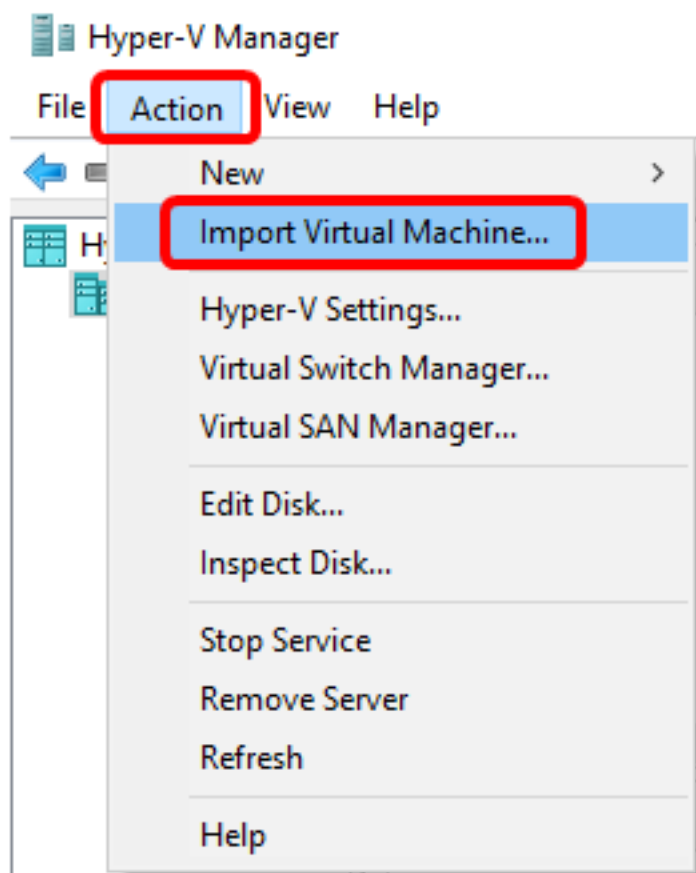


Install FindIT Network Manager using Microsoft Hyper-V Manager

Follow these steps to deploy the Virtual Hard Disk (VHD) Virtual Machine (VM) image to Microsoft Hyper-V Manager.

Step 1. Download the FindIT Network Manager VHD VM image from the [Cisco Small Business Site](#), then extract on your preferred location.

Step 2. On your Hyper-V Manager, click **Action > Import Virtual Machine**.






Step 3. Click **Browse** and locate the downloaded VHD file in Step 1.

Specify the folder containing the virtual machine to import.

Folder:

Browse...

Step 4. Browse through the FindITNetworkManager folder then click **Select Folder**.

Name	Date modified	Type
 Snapshots	8/28/2016 7:33 PM	File folder
 Virtual Hard Disks	10/7/2016 11:52 AM	File folder
 Virtual Machines	10/7/2016 11:53 AM	File folder

<

er:

Step 5. Click **Next**.

Specify the folder containing the virtual machine to import.

Folder:

Step 6. Click **Next** again.

Select the virtual machine to import:

Name	Date Created
FindITNetworkManager	8/26/2016 3:28:19 PM

< Previous

Next >

Finish

Cancel

Step 7. Click **Copy the virtual machine (create a new unique ID)** then click **Next**.

Choose the type of import to perform:

- Register the virtual machine in-place (use the existing unique ID)
- Restore the virtual machine (use the existing unique ID)
- Copy the virtual machine (create a new unique ID)

< Previous **Next >** Finish Cancel

Step 8. Click **Next** to store the VM in the specified location.

Note: Alternatively, you can check the **Store the virtual machine in a different location** check box to change the specified location.

You can specify new or existing folders to store the virtual machine files. Otherwise, the wizard imports the files to default Hyper-V folders on this computer, or to folders specified in the virtual machine configuration.

Store the virtual machine in a different location

Virtual machine configuration folder:

C:\ProgramData\Microsoft\Windows\Hyper-V\

Browse...

Checkpoint store:

C:\ProgramData\Microsoft\Windows\Hyper-V\

Browse...

Smart Paging folder:

C:\ProgramData\Microsoft\Windows\Hyper-V\

Browse...

< Previous

Next >

Finish

Cancel

Step 9. Click **Next** again.

Where do you want to store the imported virtual hard disks for this virtual machine?

Location:

Step 10. Review the Description then click **Finish**.

You are about to perform the following operation.

Description:

Virtual Machine:	FindITNetworkManager
Import file:	C:\Users\CISCO\Documents\FindIT\CentOS68-FindITManager-
Import Type:	Copy (generate new ID)
Virtual machine configuration folder:	C:\ProgramData\Microsoft\Windows\Hyper-V\
Checkpoint folder:	C:\ProgramData\Microsoft\Windows\Hyper-V\
Smart Paging file store:	C:\ProgramData\Microsoft\Windows\Hyper-V\
Virtual hard disk destination folder:	C:\Users\Public\Documents\Hyper-V\Virtual Hard Disks\

To complete the import and close this wizard, click Finish.

< Previous

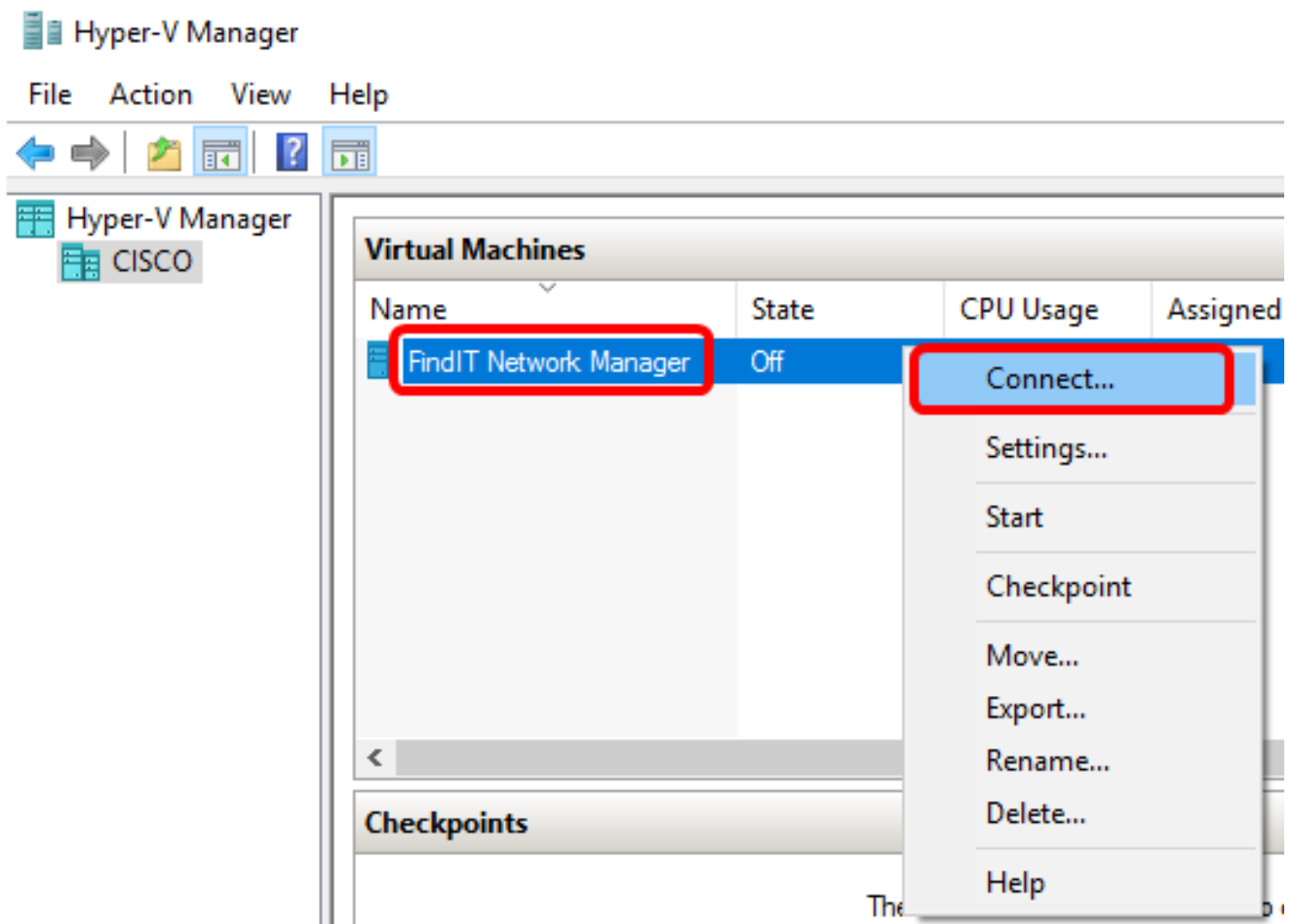
Next >

Finish

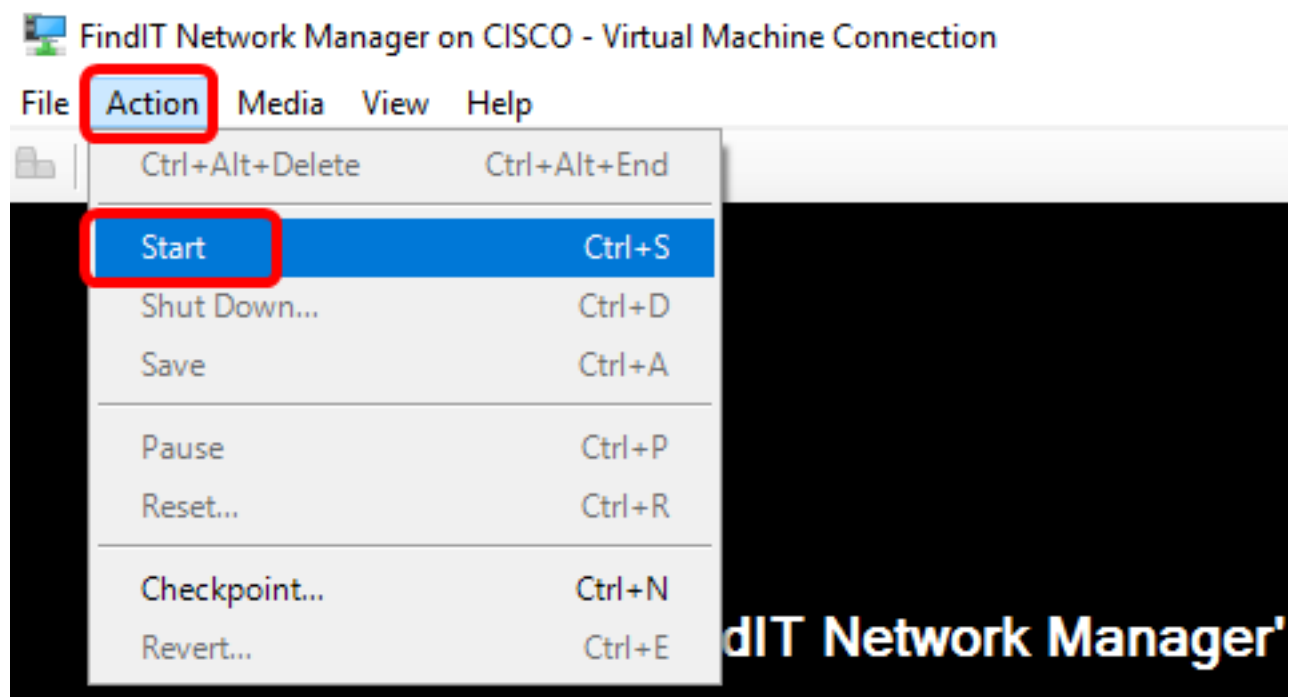
Cancel

Note: The FindIT Network Manager will be displayed in the list of virtual machines once it has been successfully deployed.

Step 11. Right-click on the VM, then click **Connect** to open the VM console.



Step 12. Click on the new VM, then click **Action > Start** to power the VM on.



You should now have deployed the FindIT Network Manager VM on the Microsoft Hyper-V Manager.

Configure the Deployed FindIT Network Manager

Once deployment of the FindIT Network Manager is completed using your preferred virtual

machine, follow the steps below to configure the VM.

Step 1. Log in to the console using the default username and password: cisco/cisco.

```
FindITManager login: cisco
Password: cisco
```

Step 2. Once you are prompted to change the password for the cisco account, enter the current password.

```
CentOS release 6.8 (Final)
Kernel 2.6.32-642.3.1.el6.x86_64 on an x86_64

FindITManager login: cisco
Password:
You are required to change your password immediately (root enforced)
Changing password for cisco.
(current) UNIX password:
```

Step 3. Enter and retype the new password for the cisco account.

```
CentOS release 6.8 (Final)
Kernel 2.6.32-642.3.1.el6.x86_64 on an x86_64

FindITManager login: cisco
Password:
You are required to change your password immediately (root enforced)
Changing password for cisco.
(current) UNIX password:
New password:
Retype new password: _
```

The DHCP IP Address and Administration GUI address will be displayed.

```
CentOS release 6.8 (Final)
Kernel 2.6.32-642.3.1.el6.x86_64 on an x86_64

FindITManager login: cisco
Password:
You are required to change your password immediately (root enforced)
Changing password for cisco.
(current) UNIX password:
New password:
Retype new password:

-----
FindIT Manager (1.0.0.20160928-beta)
Powered by CentOS release 6.8 (Final)

IP Address: 192.168.1.101      Administration GUI: https://192.168.1.101
Enter 'sudo config_vm' to change platform settings and set a static IP a
-----
[cisco@FindITManager ~]$ _
```

Note: In this example, the IP Address of FindIT Network Manager is 192.168.1.101 and the Administration GUI address is <https://192.168.1.101>.

Step 4. Enter the **sudo config_vm** command to start the initial setup wizard.

```
[cisco@FindITManager cisco]$ sudo config_vm
```

Step 5. Enter the password for sudo. The default password is cisco. If you changed it, enter the new password.

```
[cisco@FindITManager ~]$ cd /opt/cisco
[cisco@FindITManager cisco]$ sudo config_vm
[sudo] password for cisco:
```

Step 6. Enter **y** for Yes or **n** for No in the setup wizard to configure the Hostname, Network, NTP server, and Time Zone.

```
Config a hostname ? (y/n) : y
```

Step 7. (Optional) If DHCP is specified when configuring network, enter the **ifconfig** command to check the assigned IP address and remember it. A static IP can also be configured.

```
[cisco@FindITManager cisco]$ ifconfig
```

You should now have completed the FindIT Network Manager installation on your VM.

To learn how to access and configure the initial settings of the FindIT Network Manager, click [here](#) for instructions.

Install FindIT Network Probe on Microsoft Hyper-V Manager

Install FindIT Network Probe

Follow these steps to deploy the VHD VM image to Microsoft Hyper-V Manager.

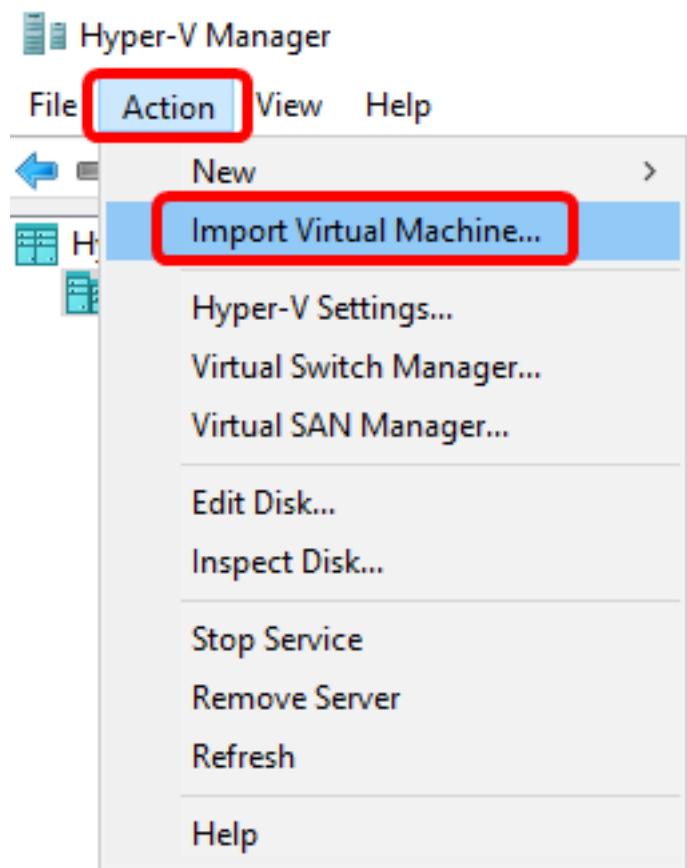
Step 1. Download the FindIT Network Probe VHD VM image from the [Cisco Small Business Site](#).

Step 2. Start the Hyper-V Manager on your Windows Server or computer.



Note: In this example, Windows 10 is used.

Step 3. On your Hyper-V Manager, click **Action > Import Virtual Machine**.






Step 4. Click **Browse** and locate the downloaded VHD file in Step 1.

Specify the folder containing the virtual machine to import.

Folder:

Browse...

Step 5. Browse through the FindITNetworkProb folder then click **Select Folder**.

Name	Date modified	Type
 Snapshots	8/28/2016 7:33 PM	File folder
 Virtual Hard Disks	10/7/2016 4:25 PM	File folder
 Virtual Machines	10/7/2016 4:26 PM	File folder

<

Step 6. Click **Next**.

Specify the folder containing the virtual machine to import.

Folder:

< Previous **Next >** Finish Cancel

Step 7. Click **Next** again.

Select the virtual machine to import:

Name	Date Created
FindITNetworkProb	8/29/2016 10:32:54 AM

< Previous

Next >

Finish

Cancel

Step 8. Click **Copy the virtual machine (create a new unique ID)** then click **Next**.

Choose the type of import to perform:

- Register the virtual machine in-place (use the existing unique ID)
- Restore the virtual machine (use the existing unique ID)
- Copy the virtual machine (create a new unique ID)

< Previous **Next >** Finish Cancel

Step 9. Click **Next** to store the VM in the specified location.

Note: Alternatively, you can check the **Store the virtual machine in a different location** check box to change the specified location.

You can specify new or existing folders to store the virtual machine files. Otherwise, the wizard imports the files to default Hyper-V folders on this computer, or to folders specified in the virtual machine configuration.

Store the virtual machine in a different location

Virtual machine configuration folder:

C:\ProgramData\Microsoft\Windows\Hyper-V\

Browse...

Checkpoint store:

C:\ProgramData\Microsoft\Windows\Hyper-V\

Browse...

Smart Paging folder:

C:\ProgramData\Microsoft\Windows\Hyper-V\

Browse...

< Previous

Next >

Finish

Cancel

Step 10. Click **Next** again.

Where do you want to store the imported virtual hard disks for this virtual machine?

Location:

C:\Users\Public\Documents\Hyper-V\Virtual Hard Disks\

Browse...

< Previous

Next >

Finish

Cancel

Step 11. Review the Description then click **Finish**.

You are about to perform the following operation.

Description:

Virtual Machine:	FindITNetworkProb
Import file:	C:\Users\CISCO\Documents\FindIT\OpenWRT-FindITProbe-1.0
Import Type:	Copy (generate new ID)
Virtual machine configuration folder:	C:\ProgramData\Microsoft\Windows\Hyper-V\
Checkpoint folder:	C:\ProgramData\Microsoft\Windows\Hyper-V\
Smart Paging file store:	C:\ProgramData\Microsoft\Windows\Hyper-V\
Virtual hard disk destination folder:	C:\Users\Public\Documents\Hyper-V\Virtual Hard Disks\

To complete the import and close this wizard, click Finish.

< Previous

Next >

Finish

Cancel

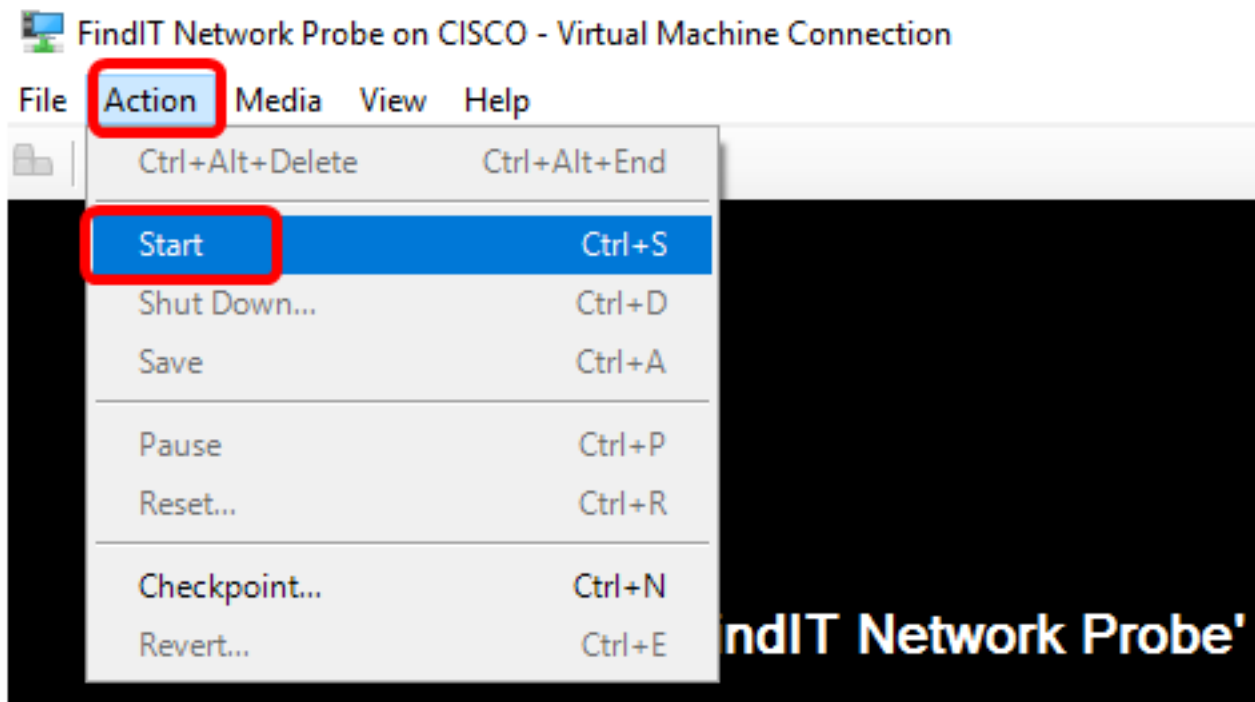
Step 12. Right-click on the VM, then click **Connect** to open the VM console.

The screenshot shows the 'Virtual Machines' console with a table of VMs. The 'FindIT Network Probe' VM is selected, and a context menu is open over it. The 'Connect...' option is highlighted in the menu.

Name	State	CPU Usage	Assigned Memory	Uptime
FindIT Network Probe	Off			
FindIT Network Manager	Running			00:05:42

- Connect...
- Settings...
- Start
- Checkpoint
- Move...
- Export...
- Rename...
- Delete...
- Help

Step 13. Click on the new VM, then click **Action > Start** to power the VM on.



Configure the Deployed FindIT Network Probe

Once deployment is finished, follow the steps below to configure the VM.

Step 1. Log in to the console using the default username and password: cisco/cisco.

FindITProbe login: cisco
Password: cisco

You will be prompted to change the password for the cisco account. The DHCP IP Address and Administration GUI address will be displayed.

```
BusyBox v1.23.2 (2016-09-02 17:15:18 CST) built-in shell (ash)
-----
FindIT Probe (1.0.1.16301)
Powered by OpenWrt CHAOS CALMER (15.05, r47955)

IP Address: 192.168.1.102    Administration GUI: https://192.
Enter 'config_vm' to change platform settings and set a stati
-----
Changing password for cisco
New password: _
```

Note: In this example, the IP Address of FindIT Network Probe is 192.168.1.102.

Step 2. Enter and retype the new password for the cisco account.


```
Changing password for cisco
New password:
Retype password:
Password for cisco changed by cisco
cisco@FindITProbe:~# _
```

Step 3. (Optional) Enter the **ifconfig** command to find the IP address of FindIT Network Probe.

```
cisco@FindITProbe:~# ifconfig
eth0      Link encap:Ethernet  HWaddr 00:0C:29:6F:2E:DD
          inet addr:192.168.1.102  Bcast:192.168.1.255  Mask:
          inet6 addr: fe80::20c:29ff:fe6f:2edd/64 Scope:Link
          inet6 addr: fec0::20c:29ff:fe6f:2edd/64 Scope:Site
          UP BROADCAST RUNNING MULTICAST  MTU:1500  Metric:1
          RX packets:149596 errors:0 dropped:0 overruns:0 fra
          TX packets:205206 errors:0 dropped:0 overruns:0 car
          collisions:0 txqueuelen:1000
          RX bytes:26494354 (25.2 MiB)  TX bytes:183876308 (1
lo        Link encap:Local Loopback
          inet addr:127.0.0.1  Mask:255.0.0.0
          inet6 addr: ::1/128 Scope:Host
          UP LOOPBACK RUNNING  MTU:65536  Metric:1
          RX packets:73994 errors:0 dropped:0 overruns:0 fram
          TX packets:73994 errors:0 dropped:0 overruns:0 carr
          collisions:0 txqueuelen:0
          RX bytes:33273411 (31.7 MiB)  TX bytes:33273411 (31
```

You should now have configured FindIT Network Probe on your machine.

To learn how to access and configure the initial settings of the FindIT Network Probe, click [here](#) for instructions. To learn how to associate the FindIT Network Probe to the FindIT Network Manager, click [here](#) for instructions.