

Device Management using Cisco Business Mobile App

Objective

The objective of this document is to show you how to add, delete, or edit a device in your network using the Cisco Business Mobile app.

Introduction

The Cisco Business Mobile app enables customers to deploy and manage supported Cisco Business devices. The mobile app is intended to help customers set up their switches and wireless networks and to manage their infrastructure from a single point of setup.

Using the Cisco Business Mobile app, you can easily add devices, delete devices, or edit device settings in your network.

To find out more, keep reading!

Applicable Software | Version

- Cisco Business Mobile App | 1.0.24 ([link to the App](#))

System Requirements for Cisco Business Mobile app

The Cisco Business Mobile app is supported on Apple iOS-based devices running iOS version 13.0 and above.

The following Cisco Business devices can be managed by the Cisco Business Mobile app:

- Cisco Business 220 Series Smart Switches
- Cisco Business 250 Series Smart Switches
- Cisco Business 350 Series Managed Switches
- Cisco Business 100 Series Access Points
- Cisco Business 100 Series Mesh Extenders
- Cisco Business 200 Series Access Points

Table of Contents

- [Add a device](#)
- [Delete a device](#)
- [Edit Device Details](#)

Add a device

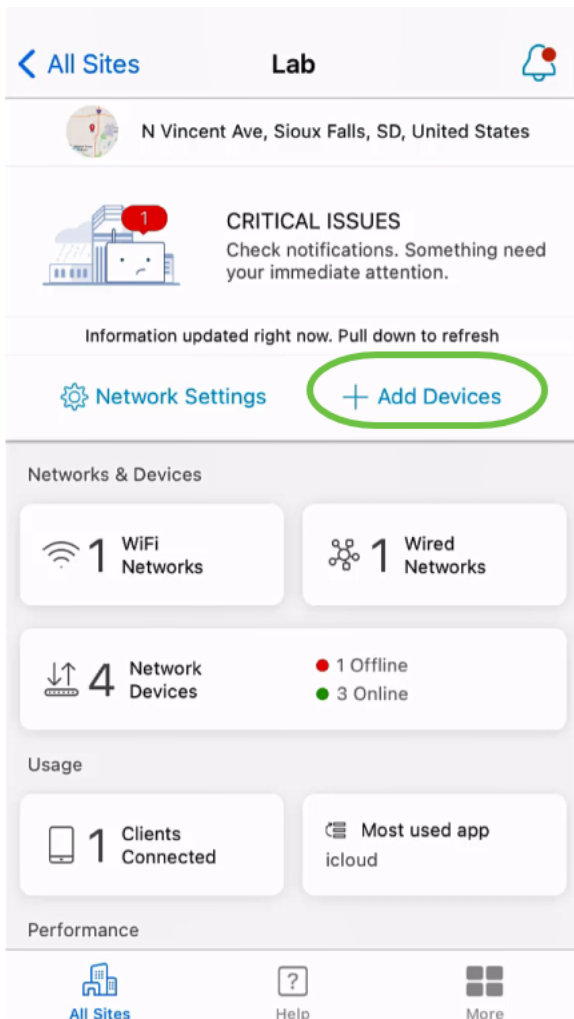
Step 1

Open the Cisco Business Mobile app.

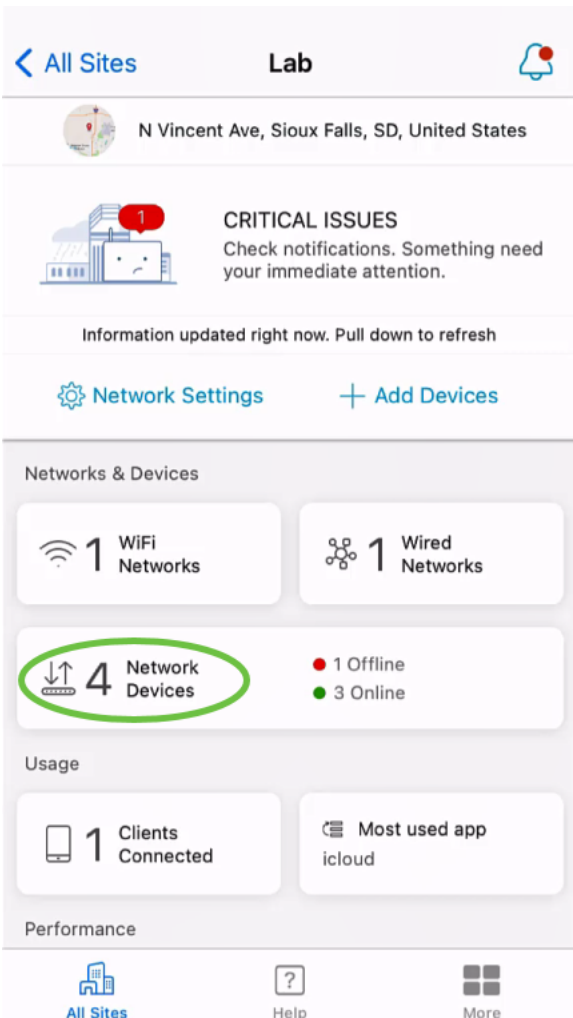


Step 2

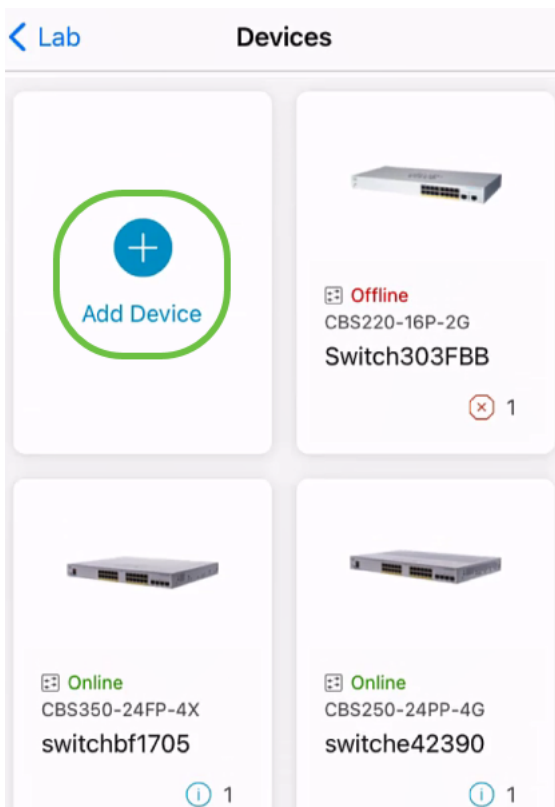
There are two ways you can add a new device. On the Site page, click on **+ Add Devices**.



Alternatively, navigate to **Network Devices** section.



Tap on **Add Device**.



Step 3

Click on **Get Started**.



Connect your devices

Before we proceed, please make sure that all the devices you want to add to Lab have been plugged in.

Get Started

Don't show this to me again

Step 4

In this example, a mesh extender will be added using the QR code. Click on **Add mesh extenders using a QR code or barcode**.

Found 0 device

We automatically discovered the following list of devices. Ensure the checkbox is selected for each device you would like to add to your site (Lab).

DISCOVERED DEVICES



Can't see the device you are looking for?

Add mesh extenders using a QR code or barcode

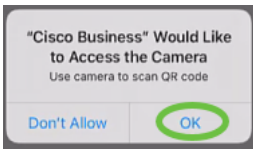
Additional access points may take a few minutes to appear

Add 0 device

The camera on your device will be used for this process.

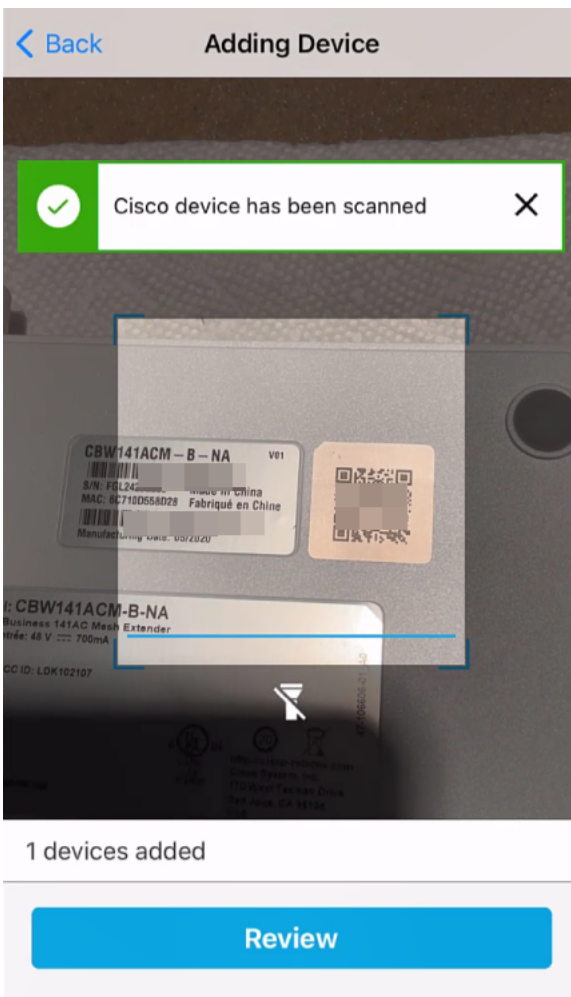
Step 5

Click **OK** to allow access to the camera.



Step 6

Scan the *QR code* of the device using the camera. You will see a notification once the device has been scanned successfully. Click on **Review** to proceed.



Step 7

Ensure that the checkbox is selected for the device. Click on **Add 1 device**.

Found 0 device

We automatically discovered the following list of devices. Ensure the checkbox is selected for each device you would like to add to your site (Lab).

DISCOVERED DEVICES



ADDED MANUALLY



Mesh 4
PID: CBW141ACM-B-NA
MAC Address: 6C:71:0D:55:8D:28
Serial No: FGL2420L25J

Can't see the device you are looking for?

[Add mesh extenders using a QR code or barcode](#)

Additional access points may take a few minutes to appear

Add 1 device

Step 8

Click on **Add and Deploy devices** to continue.

Summary

Almost done. The following devices will be added and configured to your site.

∨ Devices To Be Added

Mesh 4



[Add more devices](#)

∨ Site Settings to be applied

The devices will be added to your site and network config applied.

[View site settings](#)

Add and Deploy devices

The screen will display the progress of adding the device.

Adding Device

Adding Devices

About **0 second** remaining



ciscoAp
Serial No. FGL2418L85F



Device Added

100%



Mesh 4
Serial No. FGL2420L25J



Device Added

100%



Adding devices. Do not quit or minimize the app till it's done

Step 9

Click **Done**.

Add Devices



Done! Your Devices have been Deployed.

Good news! You've successfully deployed your devices.

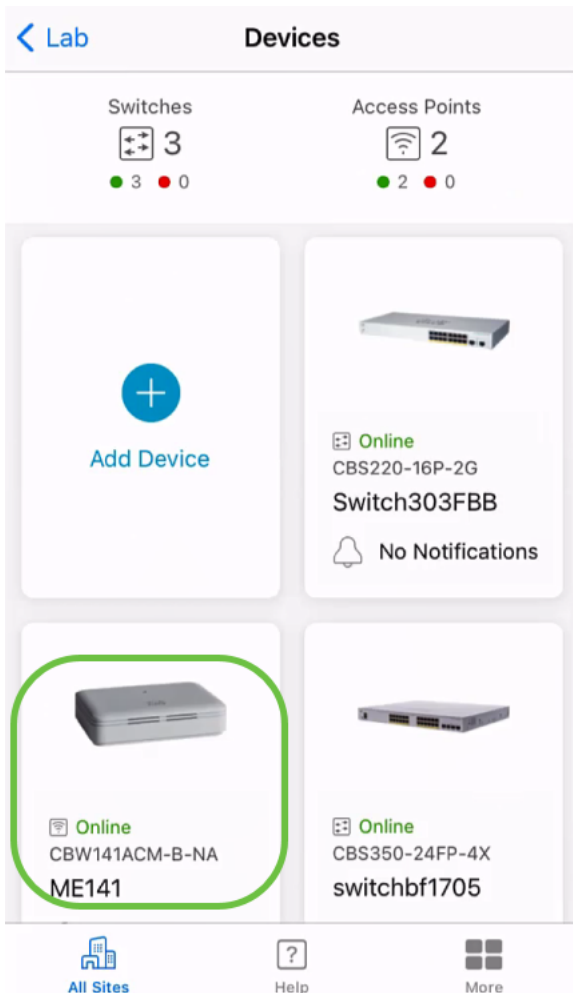
What's Next?

[See list of added devices](#)

Done

Step 10

The device will appear *Online* after several minutes.



The process can take longer if the device needs a firmware update during the configuration process.

Delete a device

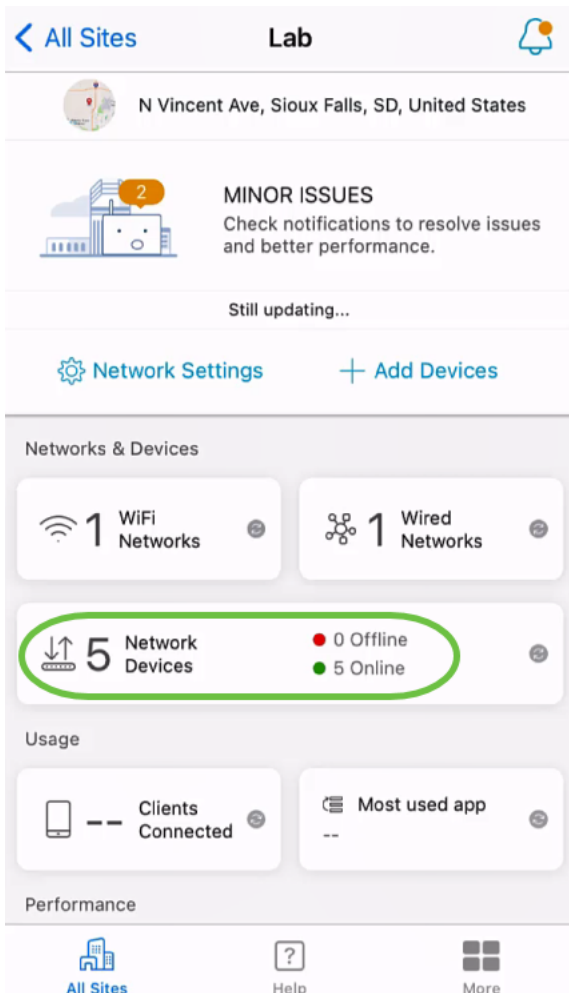
Step 1

Launch the Cisco Business Mobile app.



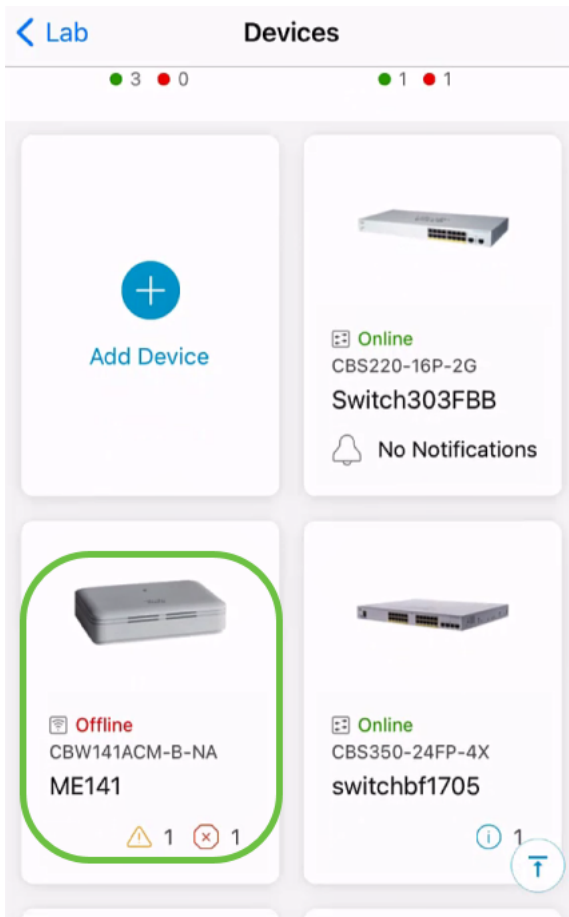
Step 2

In the *Sites* section, navigate to **Network Devices**.



Step 3

To delete a device, it should be offline. Power off your device first and wait for the app to show that it is offline. Tap on the device that you want to delete. In this example, the mesh extender is selected.



Step 4

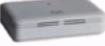
Select **Actions**.

← Devices ME141 **Actions**



Cisco Business Mobile

Getting New Data from Device

● Offline

 **Mesh Extender**
CBW141ACM-B-NA
192.168.1.132 [More](#)

Updating information...

2 Notifications  1  1

Network Connections

Connected to AP6C71.0D54.064C

Connected Via Radio 5GHz

Usage

0 Connected Devices

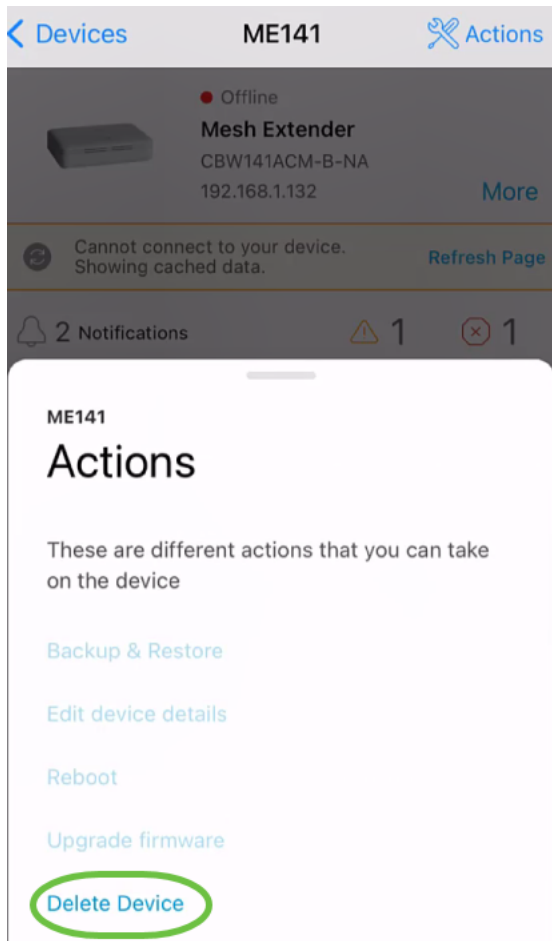
0 Bytes Over 29 minutes

2.4 GHz

5 GHz

Step 5

Select **Delete Device**.



Step 6

Click **Delete**.

Delete Device

Delete action will permanently delete **ME141** from **Lab**

ME141

Serial Number: FGL2420L25J



Cancel

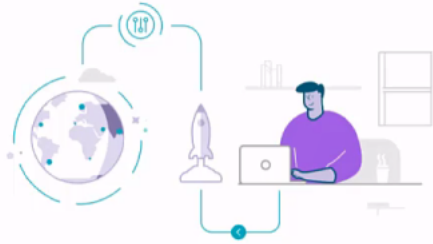
Delete

You cannot delete a device that is online.

Step 7

Click **Done**.

Delete



Done! Your device has been deleted.

Access Point - ME141

Serial Number: FGL2420L25J

What's Next?

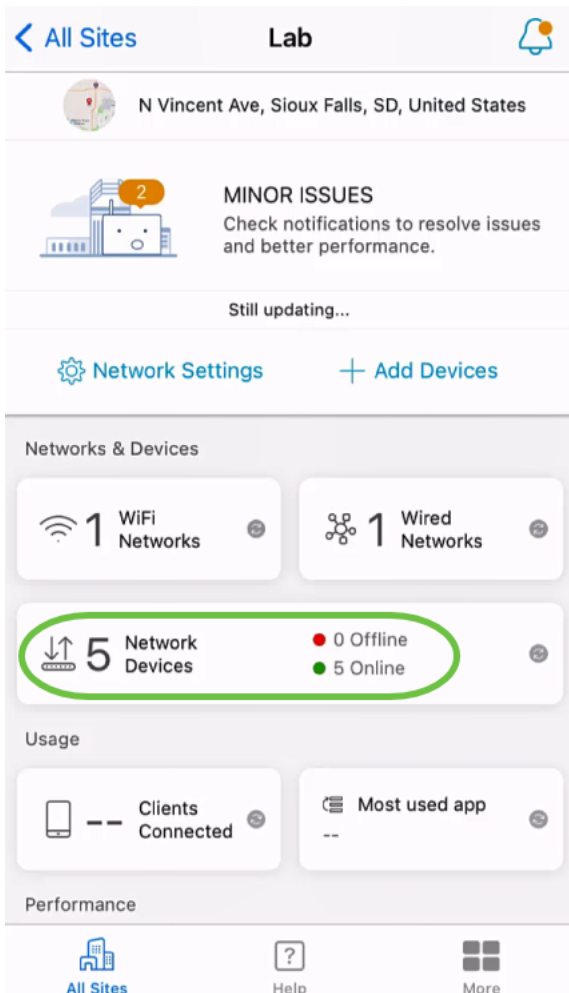
[Reset Device Factory Settings to Default](#)

Done

Edit Device Details

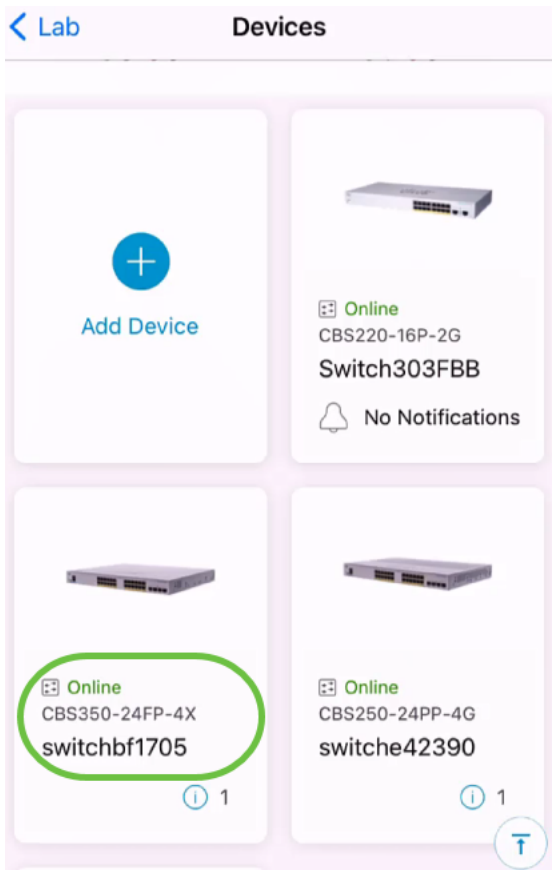
Step 1

On the main site page, click on **Network Devices**.



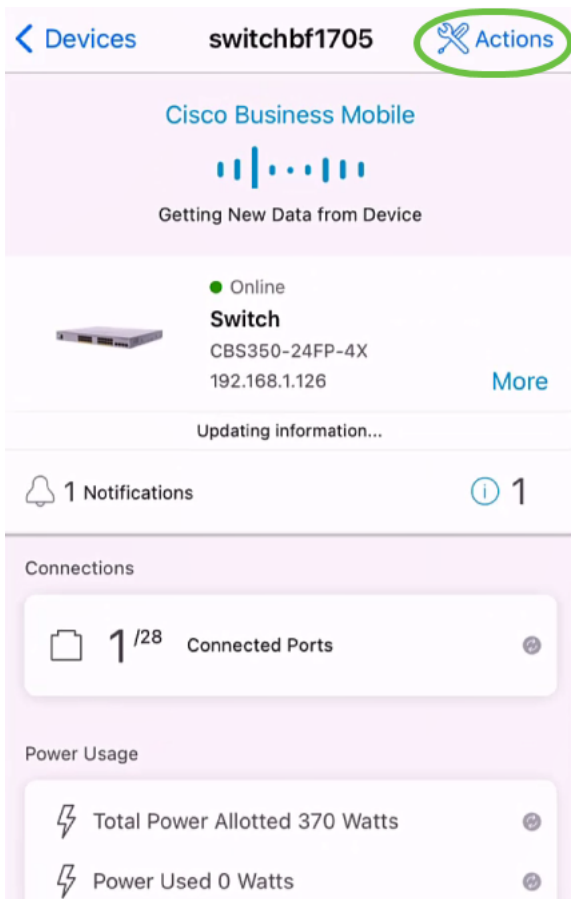
Step 2

Click on the device you want to edit. In this example, **switchbf1705** is selected.



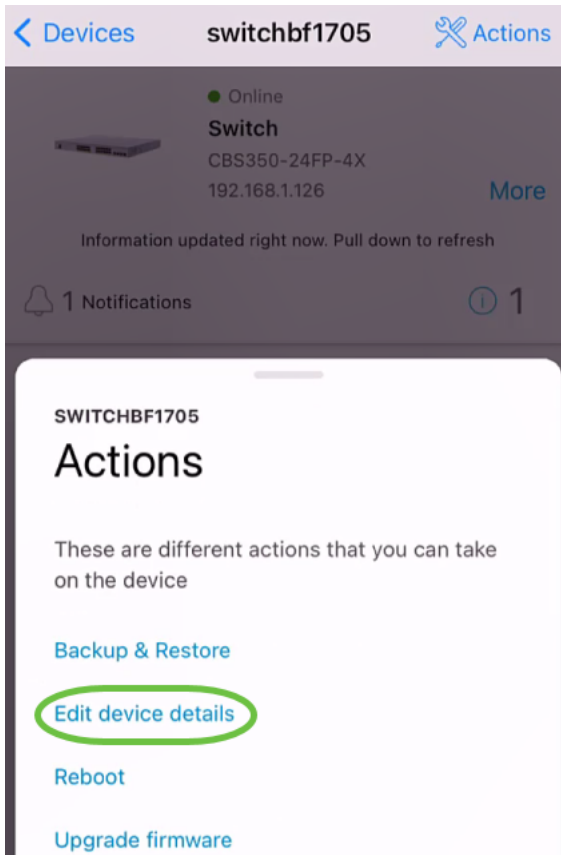
Step 3

Click on **Actions** button.



Step 4

Select **Edit device details** from the list.



Step 5

The only detail you can change is the *Hostname*. In this example, it is changed to **CBS350**. Click **done**.



SWITCH
switchbf1705

Status ● Online
Model CBS350-24FP-4X
IP Address 192.168.1.126

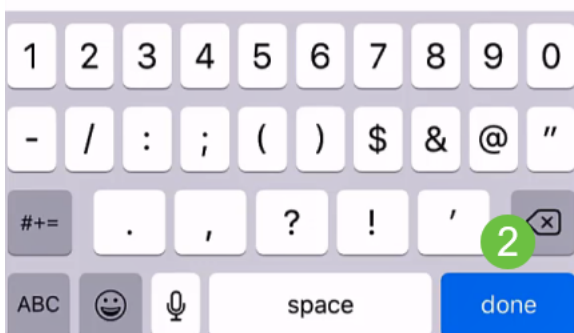
Hostname

This is the name for the device. Choose a name that will help you identify the device easily.

Hostname

CBS350

1



The new hostname will be displayed in the *Devices* section.



Add Device



Online
CBS220-16P-2G
Switch303FBB
No Notifications



Online
CBS350-24FP-4X
CBS350

1



Online
CBS250-24PP-4G
switche42390

1



Conclusion

It's that simple! With Cisco Business Mobile app you can add, delete, or edit devices in quick easy steps.

Looking for more articles on the Cisco Business Mobile application? Look no further! Click any of the tags below to be brought directly to that topic. Enjoy!

[Overview](#) [Day Zero](#) [Troubleshooting](#) [Help Page](#) [Upgrade Firmware](#) [Reboot a Device](#) [Debug Logs](#)