

# Manage Floor Plans and Devices using Cisco Business Dashboard

## Objective

The Floor Plan view on the Cisco Business Dashboard Probe allows you to keep track of the physical locations of your network devices. You can upload a plan for each floor in the building or buildings, and position each of the network devices on the plan. This helps you easily locate devices if maintenance is required.

The Floor Plan is similar in operation to the Topology Map, and devices placed on the Floor Plan can be operated in the same way as devices in the Topology Map.

This article provides instructions on how to manage Floor Plans on your Cisco Business Dashboard Network Probe and place network devices according to their locations.

## Applicable Software Version

- CBD ([Data Sheet](#)) | 2.2 ([Download latest](#))

## Manage Floor Plans using Cisco Business Dashboard Probe

### Create a New Floor Plan

Step 1. Log in to the Cisco Business Dashboard Administration User Interface.

English ▼



## Cisco Business Dashboard

User Name\*

This field is required

Password\*

Login

Step 2. Choose **Network** from the navigation pane.

# Cisco Business Dashboard



Dashboard



Network



Inventory

Step 3. Click on the **Map** option from the upper left side of the GUI.



## Cisco Business Dashboard

Map

List

Add Network

Step 4. If you have multiple networks, choose the network that you want to configure and click the **Manage** button.



Branch 1

Manage

Settings

Step 5. Choose the **Floor Plan** tab.

# ☰ Cisco Business Dashboard

Organization: All Organizations ▾ Network: Branch 1 ▾

Topology

Floor Plan

+ Add New Building

Step 6. Click on the **Add New Building** button.

# ☰ Cisco Business Dashboard

Organization: All Organizations ▾ Network: Branch 1 ▾

Topology

Floor Plan

+ Add New Building

Step 7. Enter a name for the building that houses the floor into the *New Building* field.

Topology **Floor Plan**



**Note:** In this example, Office is used as the building name.

Step 8. Click **Save**.

Topology **Floor Plan**



Step 9. Drag and drop an image file containing the floor plan onto the target area for the new floor. Supported image formats are *.png*, *.gif*, and *.jpg*. The maximum image size is up to 500 KB.



**Note:** Alternatively, you can click on the target area to upload an image from your computer.

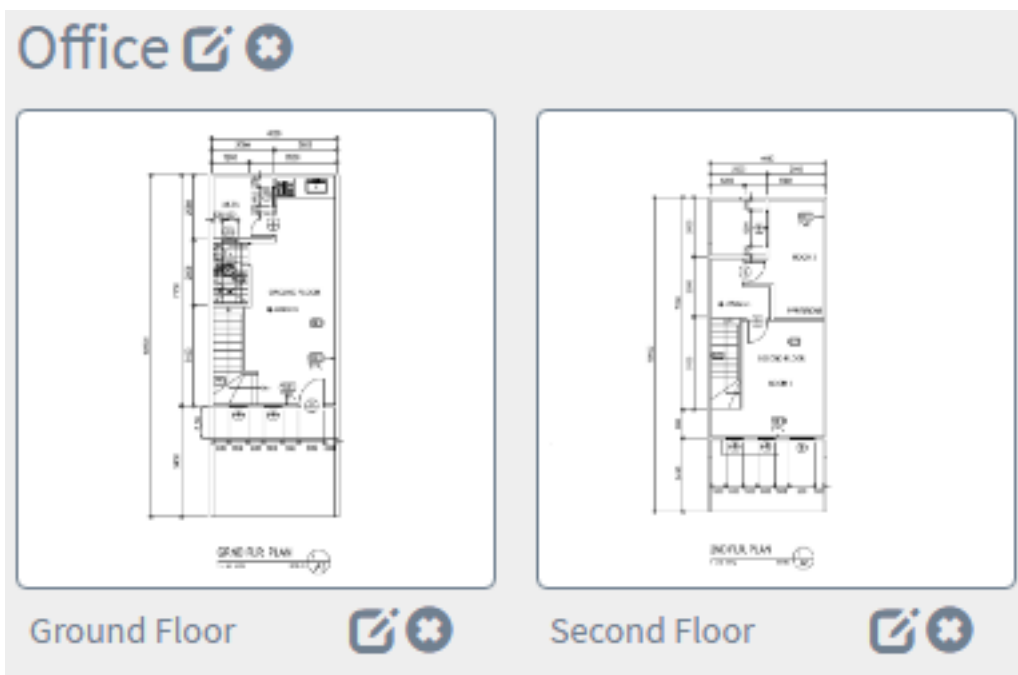
Step 10. Enter the floor name into the *New Floor* field.



**Note:** In this example, Ground Floor is used as the floor name.

Step 11. Click **Save**.

Step 12. Repeat steps 6 to 7 for each floor with network devices.

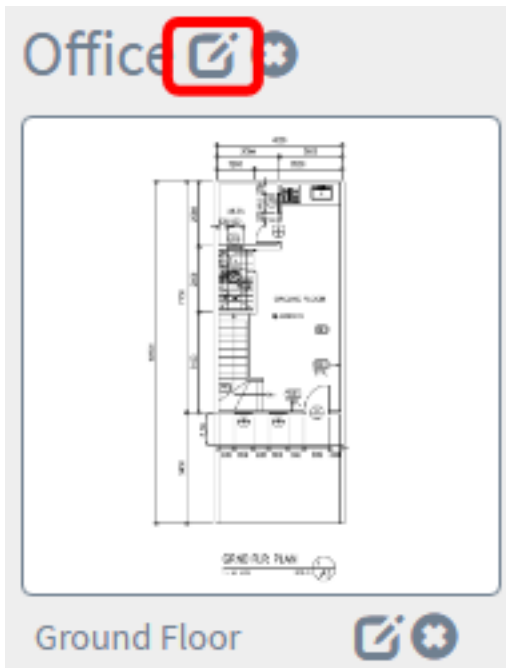


Step 13. Repeat steps 3 to 8 for each building.

You should now have created new buildings and floor plans.

## Edit the Floor Plan

Step 1. Click the **Edit** button next to the building name to edit a name.

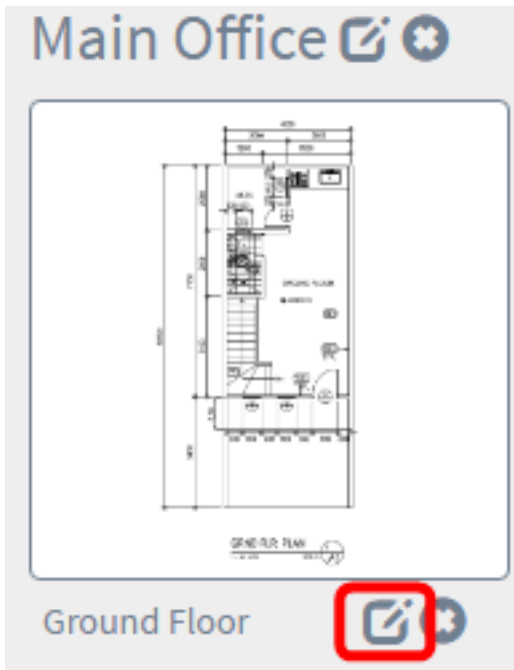


Step 2. Enter the new building name in the *Building Name* field.



Step 3. Click the **Save** button.

Step 4. Click the **Edit** button next to the floor name to edit a name.



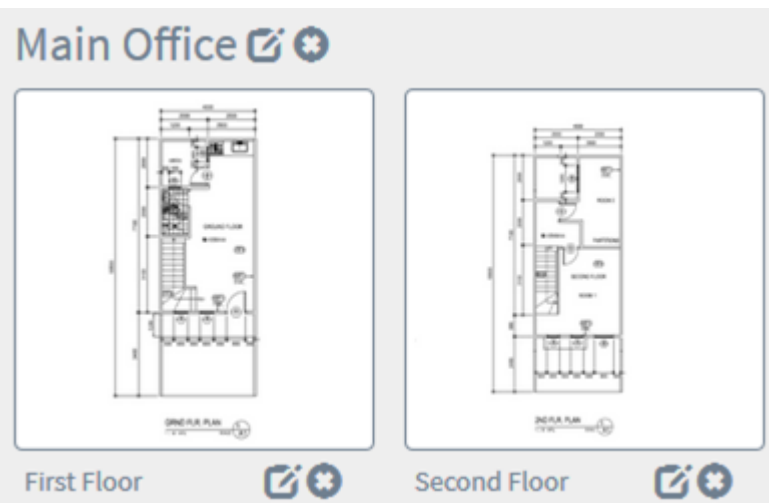
Step 5. Enter the new floor name in the *Floor Name* field.



Step 6. Click the **Save** button.

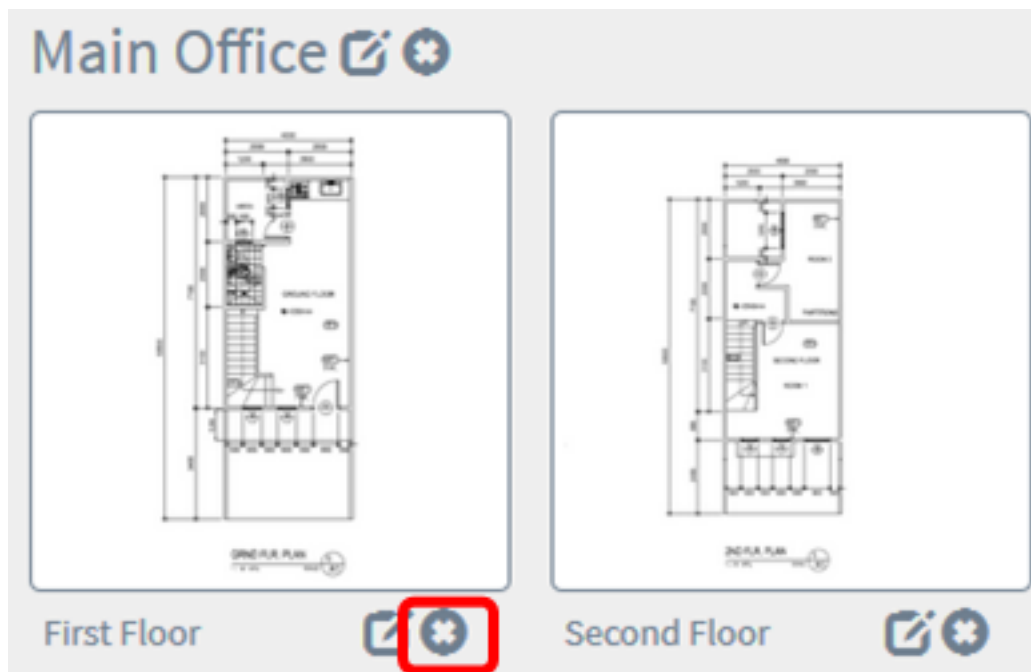
You should now have saved the changes in your floor plans.





## Remove a Floor Plan

Step 1. To delete a floor plan, click the **Delete** icon next to the floor plan name that you want to remove.



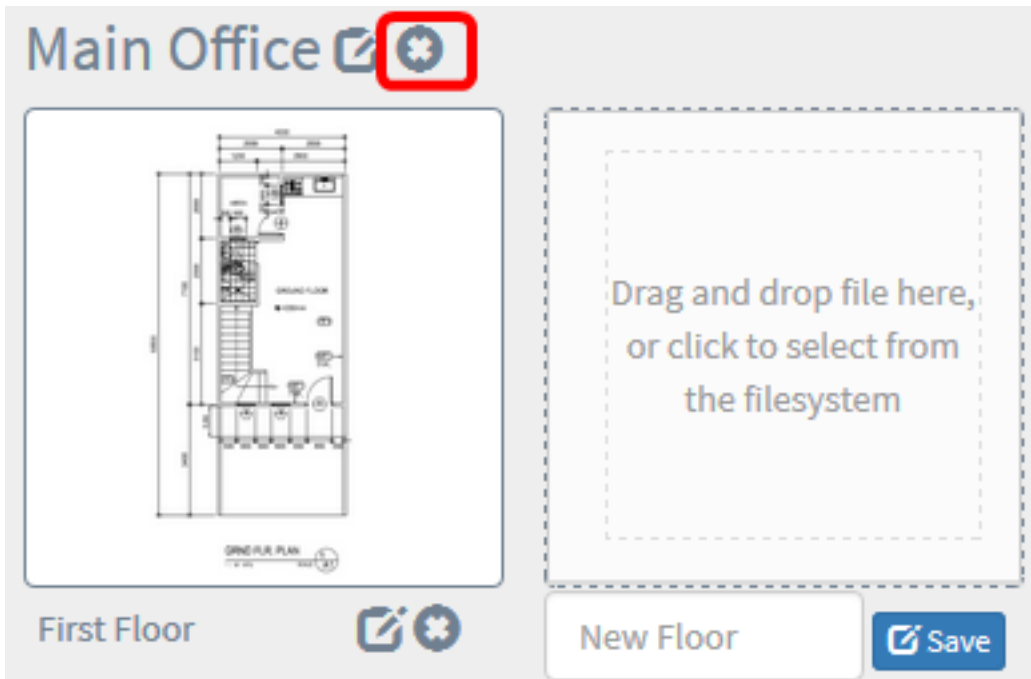
Step 2. Click **Ok** to proceed.

## Delete Building ✕

 Do you really want to delete this floor?



Step 3. To delete a building, click the **Delete** icon next to the building name that you want to remove.



Step 4. Click **Ok** to proceed.

## Delete Building



Do you really want to delete the entire building?

Ok

Cancel

You should now have removed your floor plans.

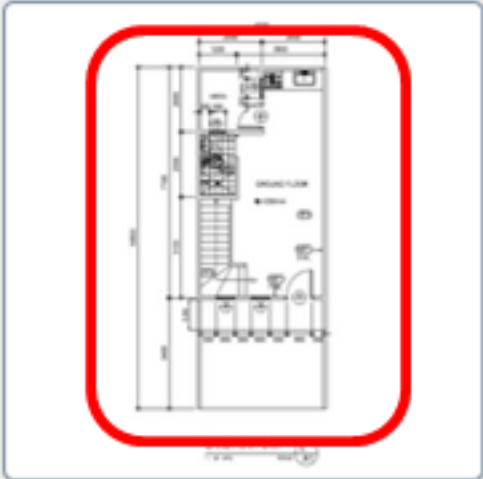
## Manage Devices in the Floor Plan

You can manage the floor plans for the site and place your network devices in order to document the location of your device. The following steps guide you through this process.

### Add Network Devices on a Floor Plan

Step 1. Click a floor plan.

## Main Office



First Floor

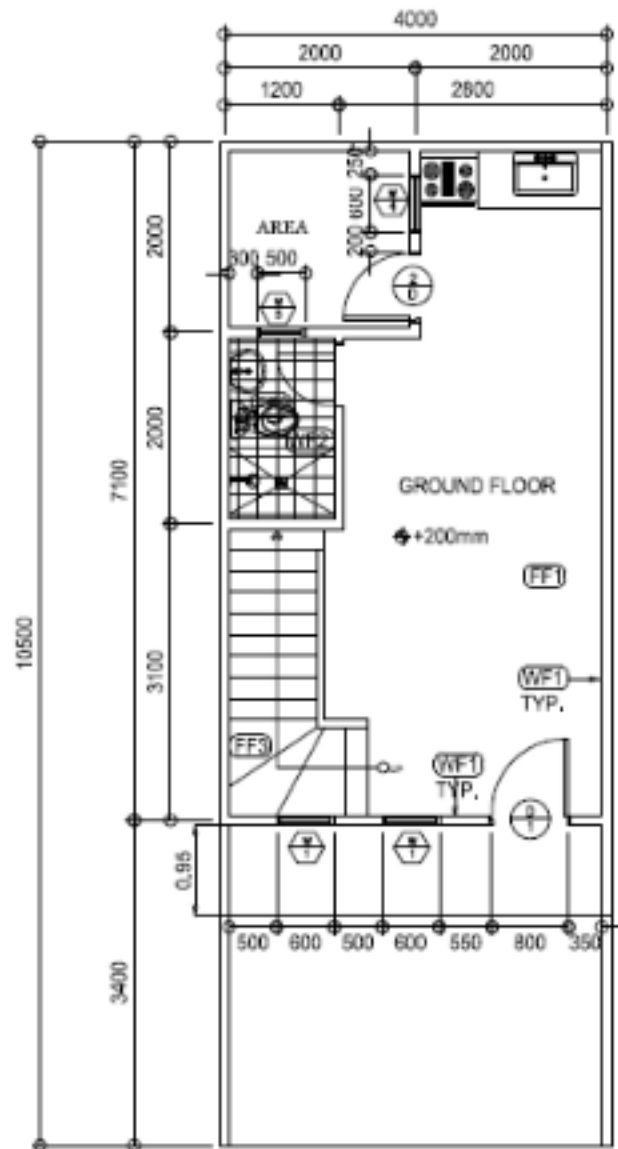


Second Floor



**Note:** In this example, First Floor in the Main Office is chosen.

Step 2. To place a device on the floor plan, enter the device name or IP address into the search box at the bottom of the screen. As you type, the matching devices will be displayed. Grayed-out device icons represent devices that have already been placed on a floor plan.



GRND FLR. PLAN

1: 80 MTS.

SCALE



switch|



[switch1f47a8](#)  
192.168.1.130



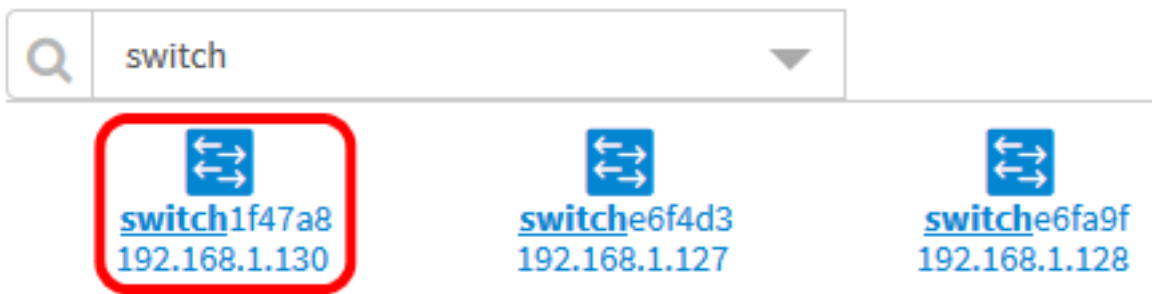
[switche6f4d3](#)  
192.168.1.127



[switche6fa9f](#)  
192.168.1.128

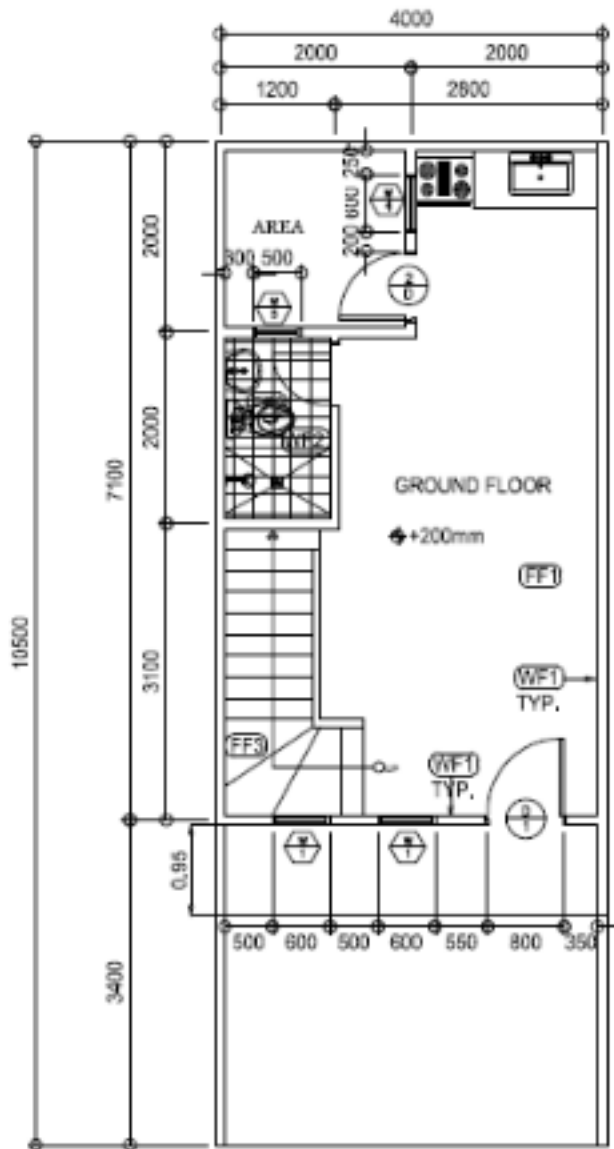
**Note:** In this example, switch is used to search.

Step 3. Click on a device to add it to the floor plan.



**Note:** In this example, switch1f47a8 is chosen.

The chosen device will be displayed in the floor plan.



GRND FLR. PLAN  
1 : 80 MTS. SCALE: 1/A1

switch



You should now have added network devices in your floor plan.

## **Position Network Devices on a Floor Plan**

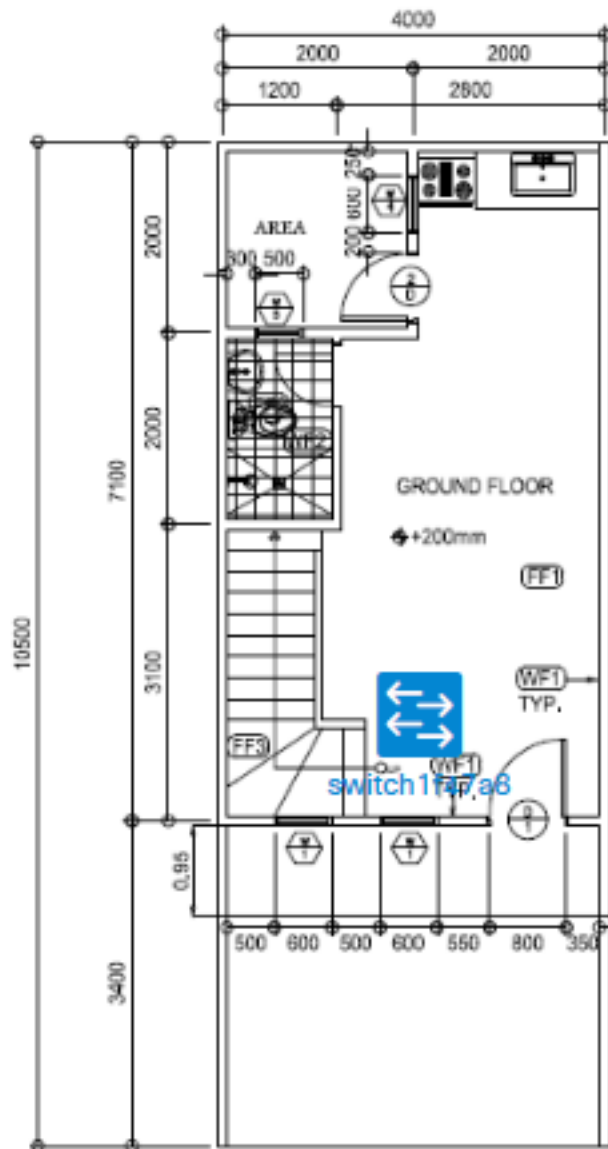
Step 1. Click on a device to add it to the floor plan.

**Important:** If you choose a device that has already been placed on another floor plan, it will be removed and added to this one.

Floor Plan / Main Office - First Floor



  
wap0a519e



GRND FLR. PLAN  
1 : 80 MTS. SCALE: 1/A1

wap

  
**wap0a519e**  
192.168.1.157

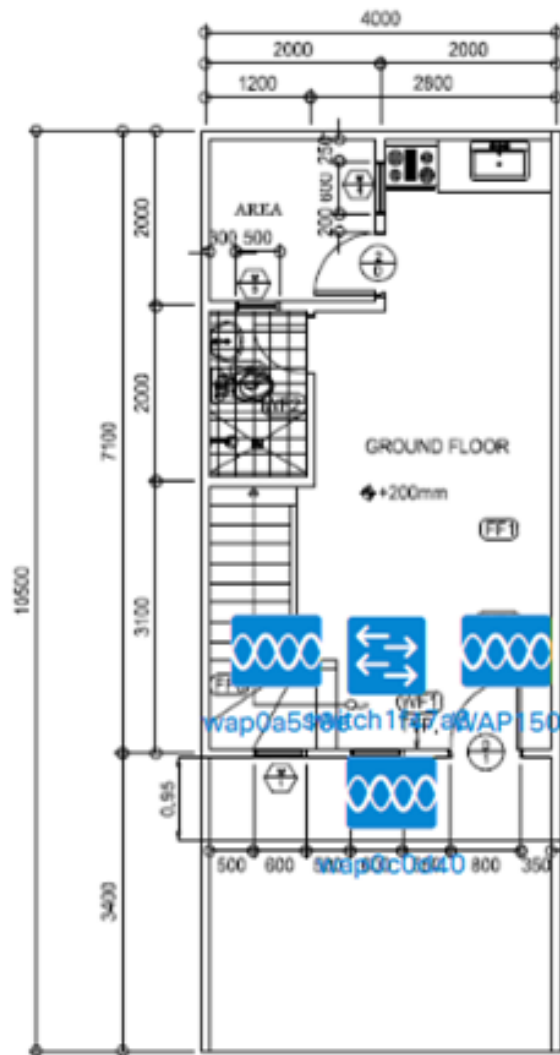
  
**wap150**  
192.168.1.123

  
**wap0c0d40**  
192.168.1.126



Step 2. Click and drag the device to move into the desired location in the floor plan.

Step 3. Repeat steps 2 and 3 until all devices have been added to the floor plan.



GRND FLR. PLAN  
1:80 MTL. SCALE: 1/A1

  
**wap0a519e**  
192.168.1.157

  
**wap150**  
192.168.1.123

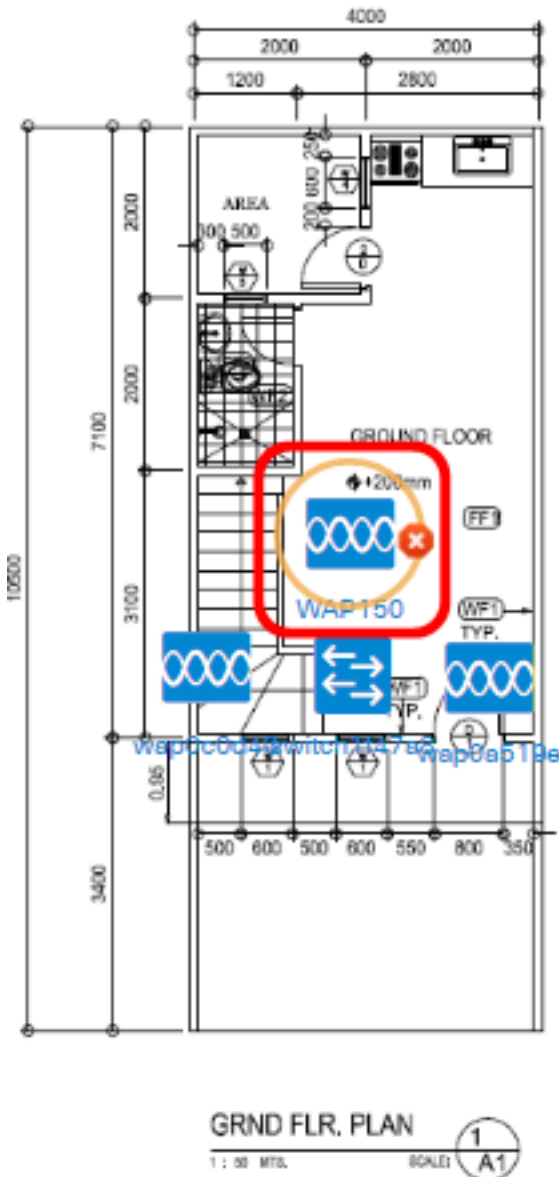
  
**wap0c0d40**  
192.168.1.126

  
**wap0c0dd0**  
192.168.1.124

You should now have positioned your network devices on your floor plan.

## Remove a Device from the Floor Plan

Step 1. Click the device that you want to remove.



WAP150  
IP address:192.168.1.123

### Basic Information:



**Model :** WAP150

**Description :** WAP150 Wireless-AC/N Dual Radio Access Point with PoE

**Firmware Version :** 1.0.1.7

**PID VID :** WAP150-E-K9-EU V01

**MAC Address :** 80:E8:6F:0A:5D:EE

**Serial Number :** DNI1951A2K3

**Status :** Online

### Notifications:

**Note:** In this example, a WAP150 is chosen.

Step 2. Click on the **Delete** button that is displayed to remove the device from the floor plan.

