

Configure System Event Log Backup Policy in UCS Manager

Contents

[Introduction](#)

[Prerequisites](#)

[Requirements](#)

[Components Used](#)

[Background Information](#)

[Configure](#)

[Verify](#)

[Troubleshoot](#)

[Related Information](#)

Introduction

This document describes how to configure the System Event Log (SEL) Backup policy in Cisco Unified Computing System (UCS) Manager and how it works.

Prerequisites

Requirements

Cisco recommends that you have knowledge of these topics:

- UCS Manager software knowledge
- Policies management in UCS

Components Used

The information in this document is based on these software and hardware versions:

- UCS Manager 2.0 (x) - 4.0(x)
- Fabric Interconnect 6200 - 6400 series

The information in this document was created from the devices in a specific lab environment. All of the devices used in this document started with a cleared (default) configuration. If your network is live, ensure that you understand the potential impact of any command.

Background Information

SEL Backup Policy automatically backs up the SEL log when certain conditions are met. The available conditions are:

1. Log Full - Different from other logs, the SEL log does not automatically rollover. When the SEL logs fill up, no new logs are captured until they are manually cleared. An informational message on a blade server prompts this message, 'logging capacity is very low'. In order to avoid the loss of any important information configure a SEL policy to automatically backup and clear the SEL when the log capacity is full.
2. On Change of Association - SEL logs can be kept separated for different service profiles. When Service Profiles (SP) are changed, the SEL log is backed up and optionally cleared for the new one.
3. On Clear - A copy of all SEL logs can be kept when this option is selected. The system backs up any information it had before the clear option is selected.
4. Timer - Select this option for weekly/daily/hourly backup.

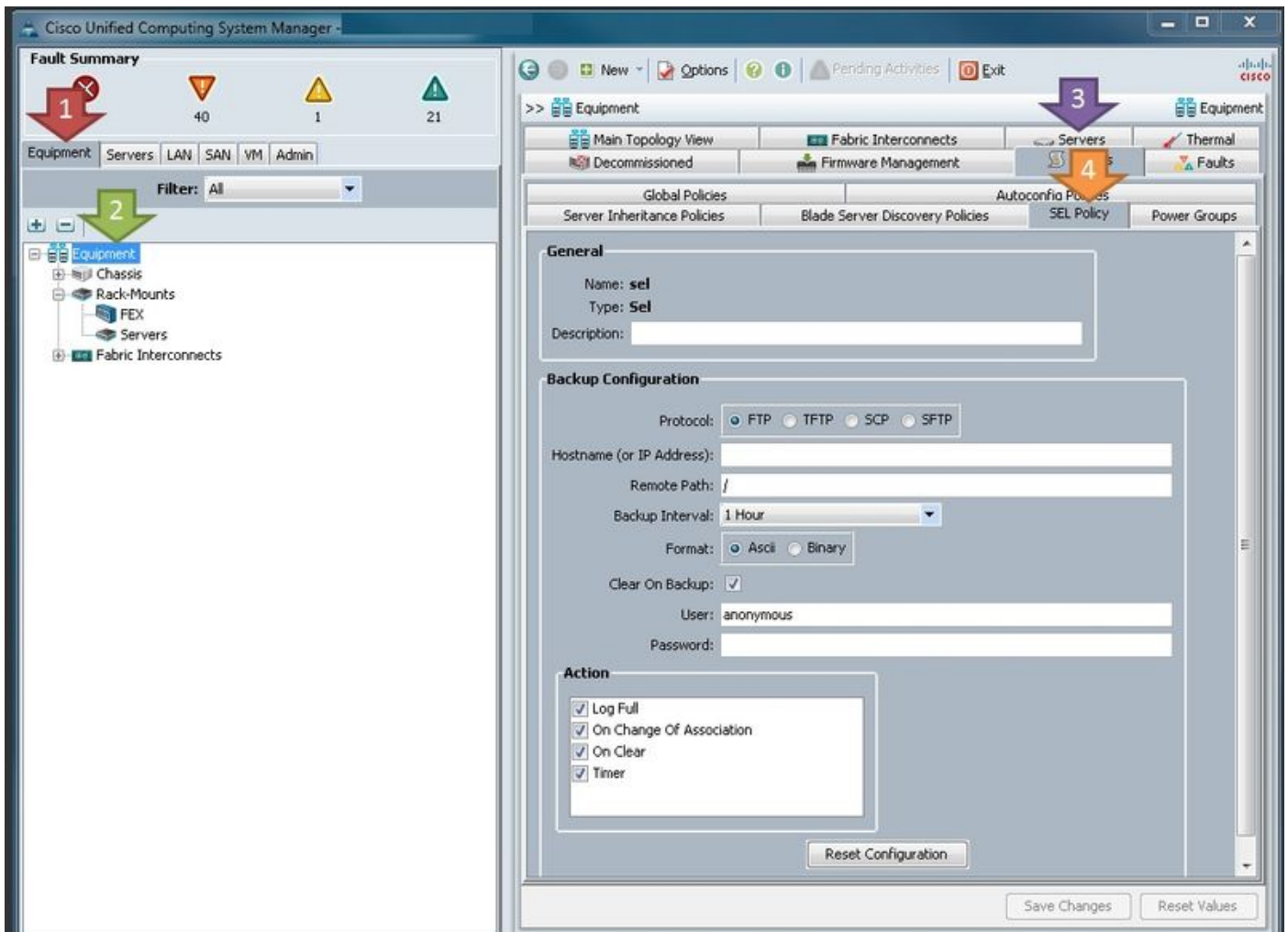
You can select any number of these and when any of them are met, the SEL log backs up.

Configure

In order to configure SEL Backup Policy, navigate to **CUCM**, then:

- Step 1. In the Navigation pane, select **Equipment**.
- Step 2. Select the **Equipment** node.
- Step 3. In the Work pane, select the **Policies** tab.
- Step 4. Select the **SEL Policy** sub-tab.

Here you can find an example of a SEL Log Policy as shown in the image:



Parameters definition:

Protocol: The type of file transfer to use for SEL backup.

Hostname (or IP address): The remote server's location. If you don't have DNS configured on the UCS, ensure to use the IP address.

Remote Path: The path to the folder on the server where the backups are stored.

Backup Interval: The interval to use if the **timer** option is used.

Format: ASCII so that humans can read it, binary if you have a specific need.

Clear on Backup: Unless you have a specific need, this must be checked as the SEL policy is one of the few ways that the SEL logs are automatically be cleared. Plus, any information that is cleared is backed up to the server beforehand.

User: Username for the server.

Password: Password for the server.

Action: Conditions under which the SEL policy executes.

Once the configuration is ready, the SEL policy takes effect immediately. The SEL logs are back up to the server once the selected actions are met.

Verify

There is currently no verification procedure available for this configuration.

Troubleshoot

There is currently no specific troubleshooting information available for this configuration.

Related Information

- [Cisco UCS Manager System Monitoring Guide](#)
- [Technical Support & Documentation - Cisco Systems](#)