

VM-FEX with Hyper-V Configuration Example

TAC

Document ID: 116374

Contributed by Shankar Prasath R, Cisco TAC Engineer.
Aug 25, 2014

Contents

Introduction

Prerequisites

Requirements

Components used

Background information

VM-FEX

SR-IOV

Configure

Verify

Troubleshoot

Related Information

Introduction

This beginner-level document describes the minimum settings required in order to configure the Cisco Virtual Machine Fabric Extender (VM-FEX) with Hyper-V on Windows Server 2012 with Unified Computing System (UCS) Release 2.1. It does not explain all the options in detail. Refer to the Cisco UCS Manager VM-FEX for Hyper-V GUI Configuration Guide, Release 2.1 for more information.

In order to configure VM-FEX with Hyper-V on UCS Release 2.2, refer to Cisco UCS Manager VM-FEX for Hyper-V GUI Configuration Guide, Release 2.2.

Prerequisites

Requirements

Cisco recommends that you have a working knowledge of these topics:

- Cisco UCS and UCS Manager (UCSM)
- Windows Server 2012 and Hyper-V Version 3.0

Components used

These are the minimum prerequisites needed in order to configure VM-FEX with Hyper-V:

- UCS Version 2.1(1a) or later
- Server that Contains a Cisco VIC Adapter
- Windows Server 2012 or later

The information in this document was created from the devices in a specific lab environment. All of the devices used in this document started with a cleared (default) configuration. If your network is live, make sure that you understand the potential impact of any command.

Background information

VM-FEX

Cisco VM-FEX technology allows you to extend the switching fabric to the virtual machine level. The regular software-based switching done at the hypervisor layer for the virtual machine is bypassed, and the switching is performed directly in the fabric interconnect. VM-FEX is implemented in a Windows Hyper-V environment with the use of Single Root I/O Virtualization (SR-IOV) and Intel Virtualization Technology for Directed I/O (VT-d) technologies.

SR-IOV

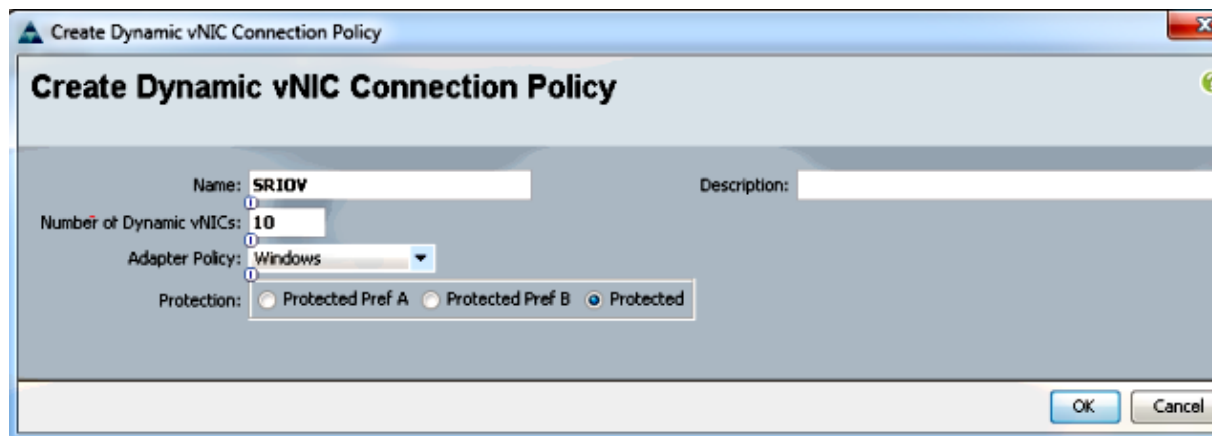
SR-IOV allows multiple Virtual Machines (VMs) to share a single Peripheral Component Interconnect Express (PCIe) network adapter inside a host. SR-IOV defines these functions:

- Physical function (PF) – PFs are full PCIe functions that include the SR-IOV capabilities. These appear as regular static Virtual Network Interface Controllers (vNICs) on the UCS.
- Virtual function (VF) – VFs are lightweight PCIe functions that help in data transfer. A VF is derived from, and managed through, a PF.

Configure

1. Create a Dynamic vNIC connection policy.

- ◆ Navigate to **LAN > Policies**.
- ◆ Create a **Dynamic vNIC connection Policy** with the required number of dynamic vNICs (VF).
- ◆ Use the predefined **Windows adapter policy**.



2. Create a service profile to be used for VM-FEX.

- ◆ Create a Service profile from **Servers > Service Profiles**. Choose the **Create Service Profile (expert)** option.
- ◆ When you create the static vNICs (PF):
 - ◇ Choose the predefined **SRIOV adapter policy**.
 - ◇ Choose the **Dynamic vNIC connection policy** that you created in Step 1.

Fabric ID: Fabric A Fabric B Enable Failover

VLANs

Select	Name	Native VLAN
<input type="checkbox"/>	VLAN155	<input type="radio"/>
<input type="checkbox"/>	VLAN156Primary	<input type="radio"/>
<input checked="" type="checkbox"/>	VLAN_10	<input checked="" type="radio"/>
<input type="checkbox"/>	Vlan101	<input type="radio"/>

[+ Create VLAN](#)

MTU:

Pin Group: [+ Create LAN Pin Group](#)

Operational Parameters

Adapter Performance Profile

Adapter Policy: [+ Create Ethernet Adapter Policy](#)

Dynamic vNIC Connection Policy: [+ Create Dynamic vNIC Connection Policy](#)

QoS Policy: [+ Create QoS Policy](#)

Network Control Policy: [+ Create Network Control Policy](#)

- ◆ Choose the predefined *SRIOV BIOS policy*. This mandatory step enables these settings under the BIOS settings:
 - ◇ Virtualization Technology (VT) and Direct Cache Access enabled under *Advanced > Processor*.
 - ◇ Interrupt Remap and VT for Directed I/O enabled under *Advanced > Intel Directed IO*.

Create Service Profile (expert)

1. [Identify Service Profile](#)
2. [Networking](#)
3. [Storage](#)
4. [Zoning](#)
5. [vNIC/vHBA Placement](#)
6. [Server Boot Order](#)
7. [Maintenance Policy](#)
8. [Server Assignment](#)
9. [Operational Policies](#)

Operational Policies

Optionally specify information that affects how the system operates.

BIOS Configuration

If you want to override the default BIOS settings, select a BIOS policy that will be associated with this service profile.

BIOS Policy: [+ Create BIOS Policy](#)

External IPMI Management Configuration

Management IP Address

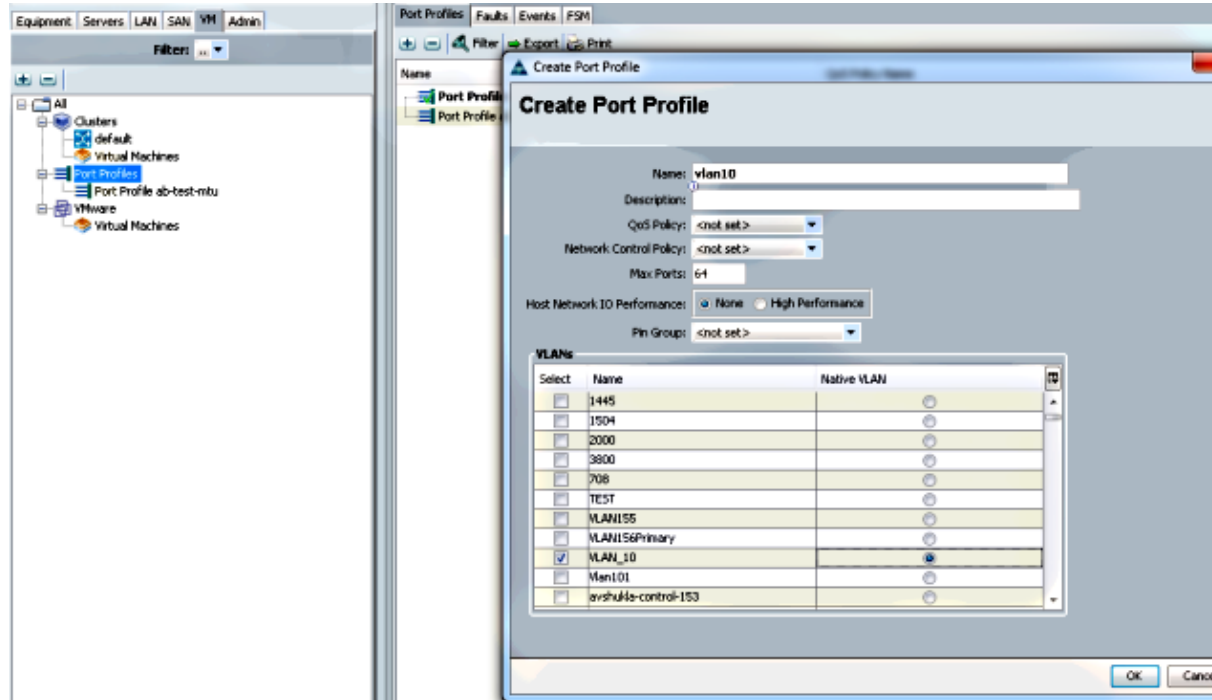
Monitoring Configuration (Thresholds)

Power Control Policy Configuration

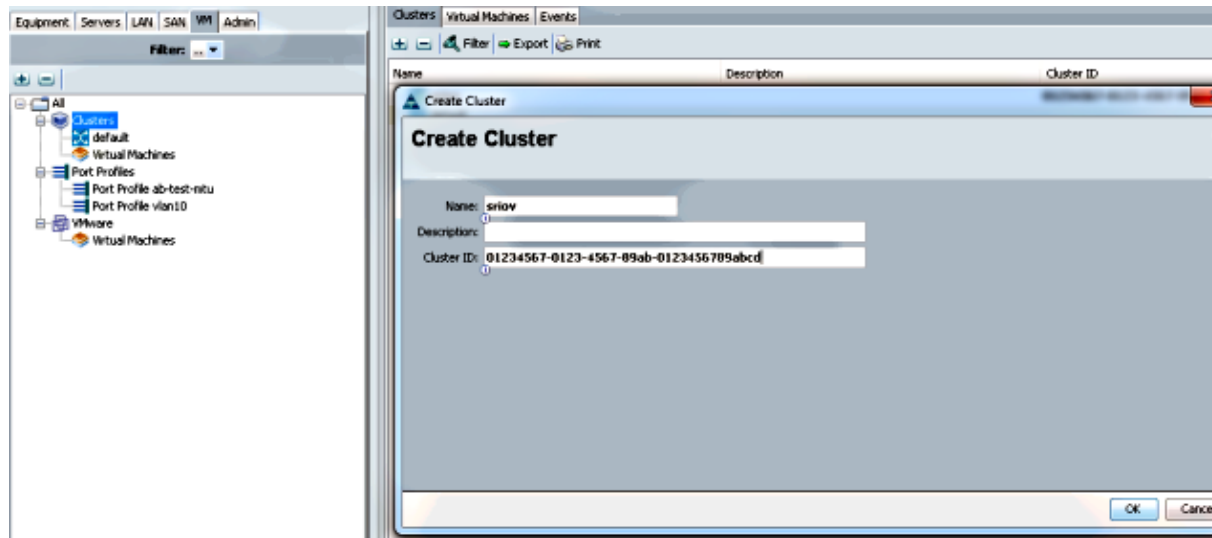
Scrub Policy

3. *Create a port-profile, cluster, and a port-profile client.*
 - ◆ Navigate to *VM > Port Profiles*.

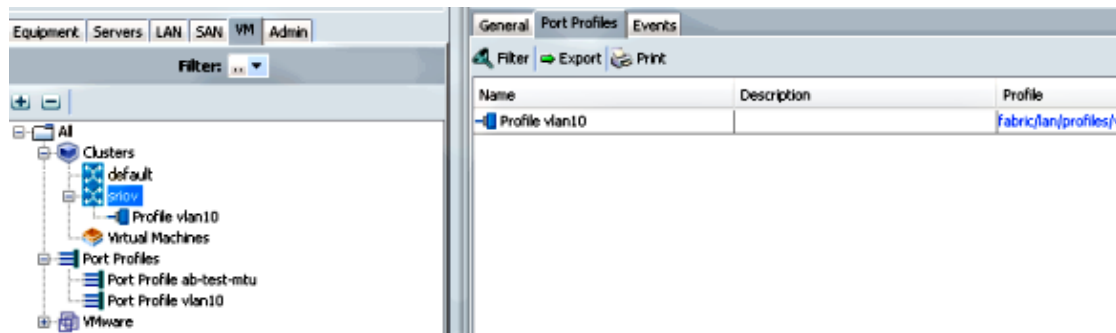
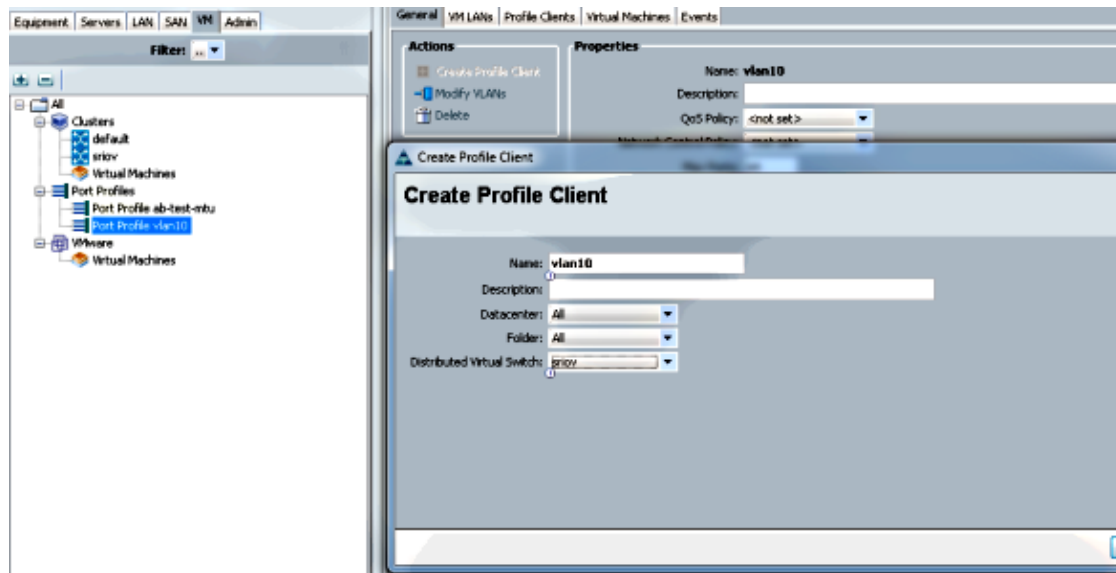
- ◆ Create a *Port Profile*. This defines the configuration for the port that connects to the VM.



- ◆ Create a separate *cluster* to be used with Hyper-V (recommended step).

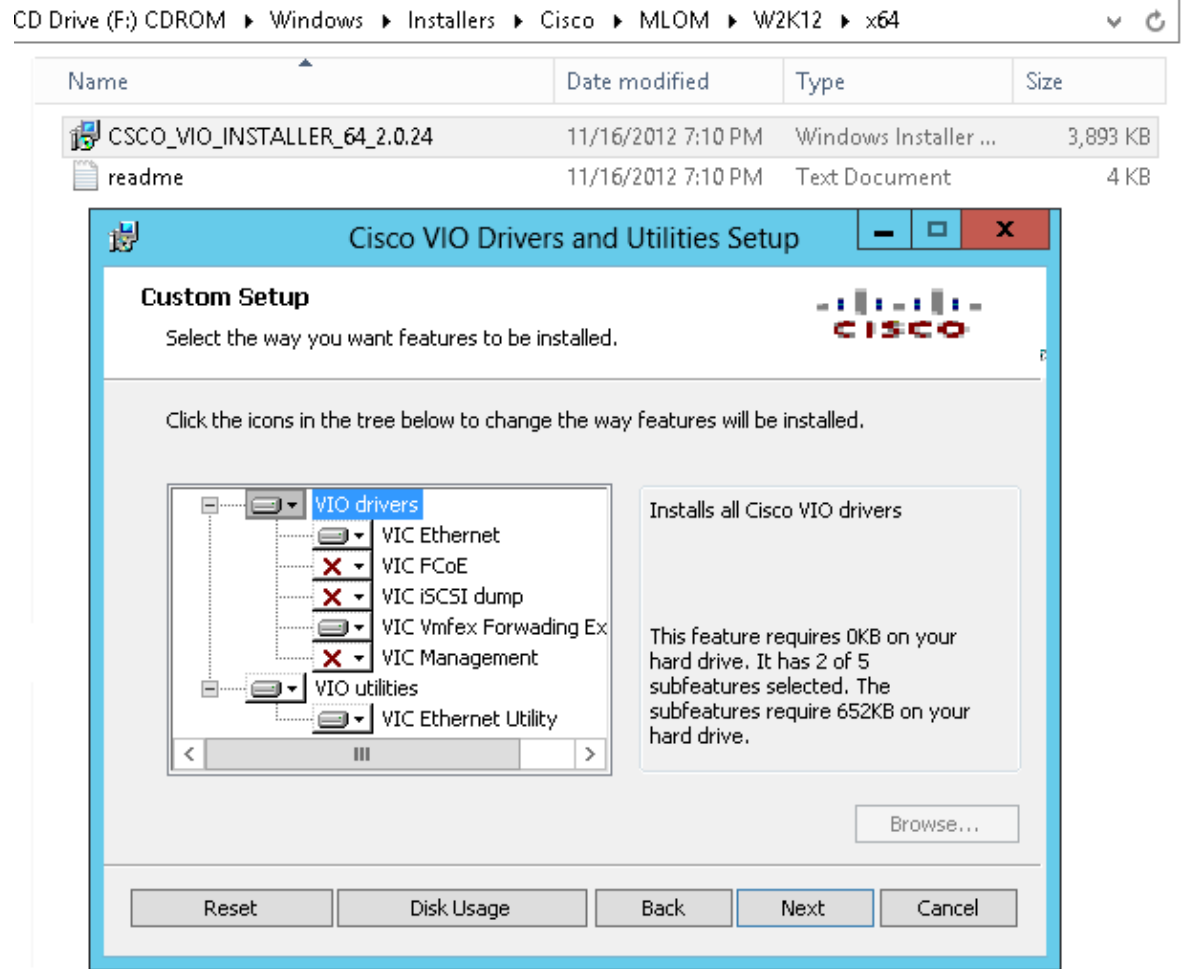


- ◆ Associate the required port-profiles to this cluster.
 - ◇ Right-click the port-profile, and choose the *Create Profile Client*.
 - ◇ Choose the *cluster* that you created for the Distributed Virtual Switch. The port-profile appears under the cluster.

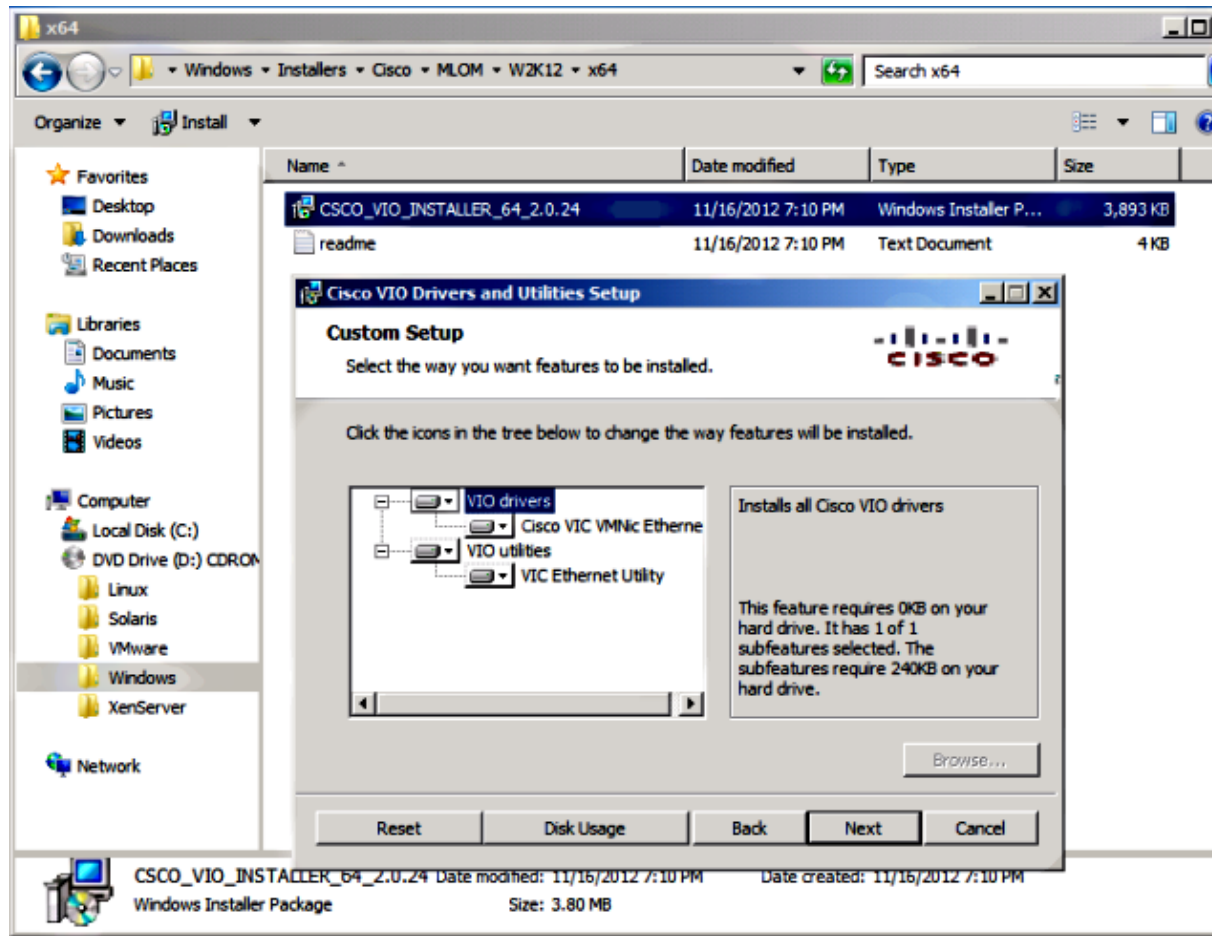


4. Install the PF, VF, and VM-FEX switch drivers.

- ◆ On the Windows 2012 host, install the PF drivers and the VM-FEX switching extension.
- ◆ Download the *B-series drivers bundle*. Use the *CSCO_VIO_INSTALLER_version.msi* file for this purpose. For example, with the 2.1(1a) drivers bundle, look for *CSCO_VIO_INSTALLER_64_2.0.24.msi* at */Windows/Installers/Cisco/<adapter>/W2k12/x64*.
- ◆ Run the file as an *administrator*, and install the *VIC Ethernet and VIC VMFex* forwarding extension.

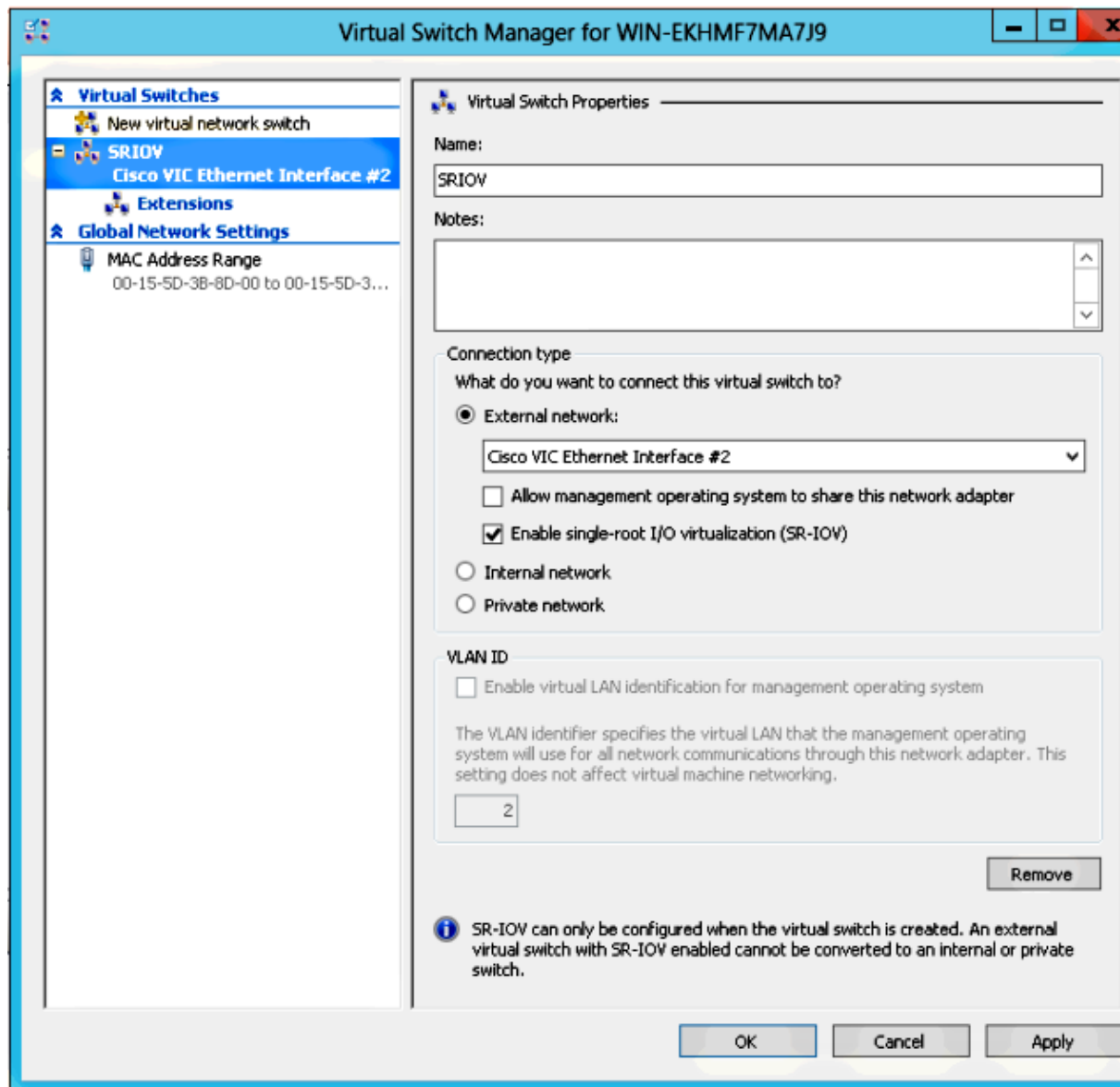


- ◆ Use the *same msi file* on the VM, and install the *VIC VMNic Ethernet driver*.

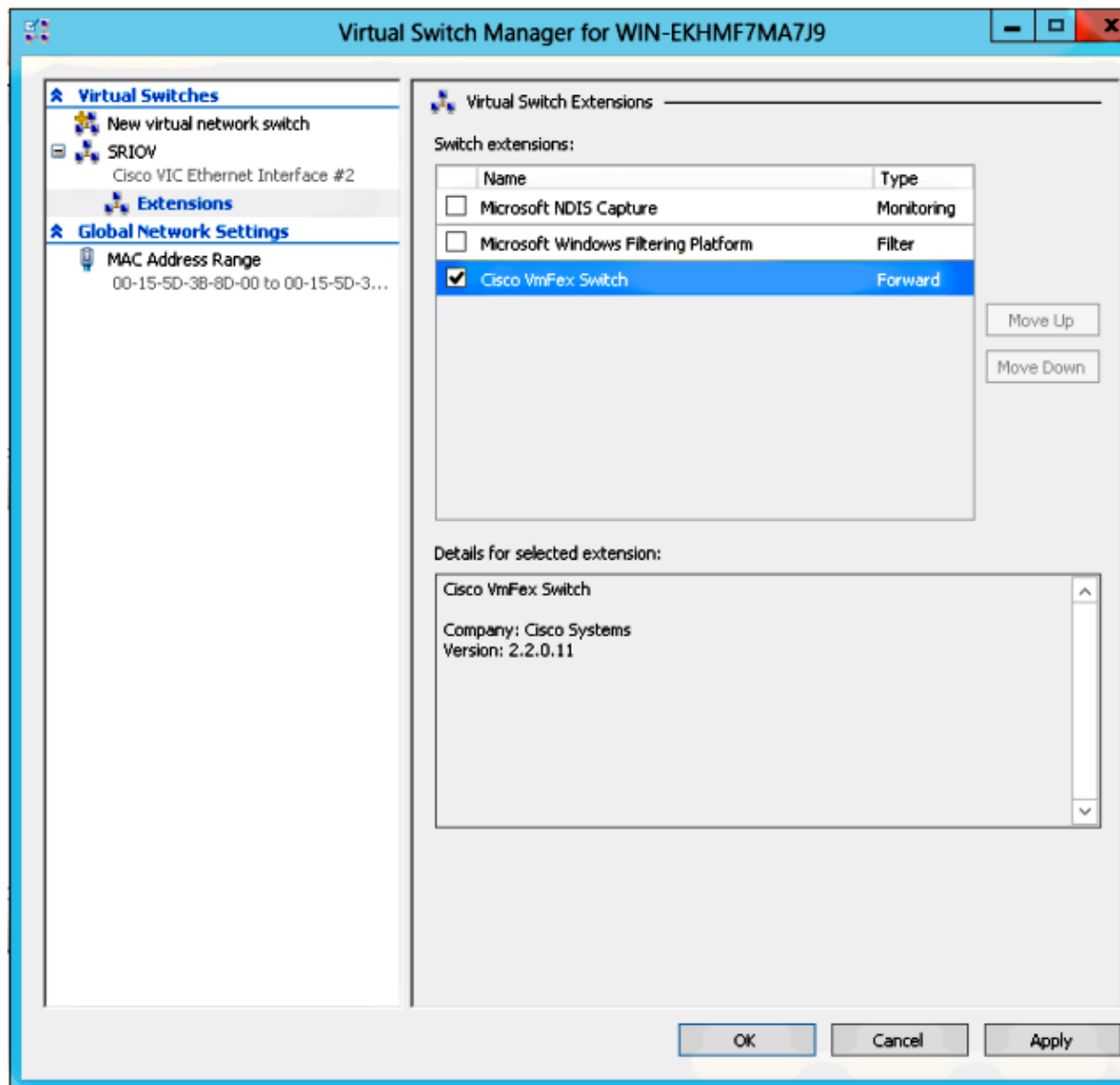


5. Create the Virtual Switch with the Hyper-V manager.

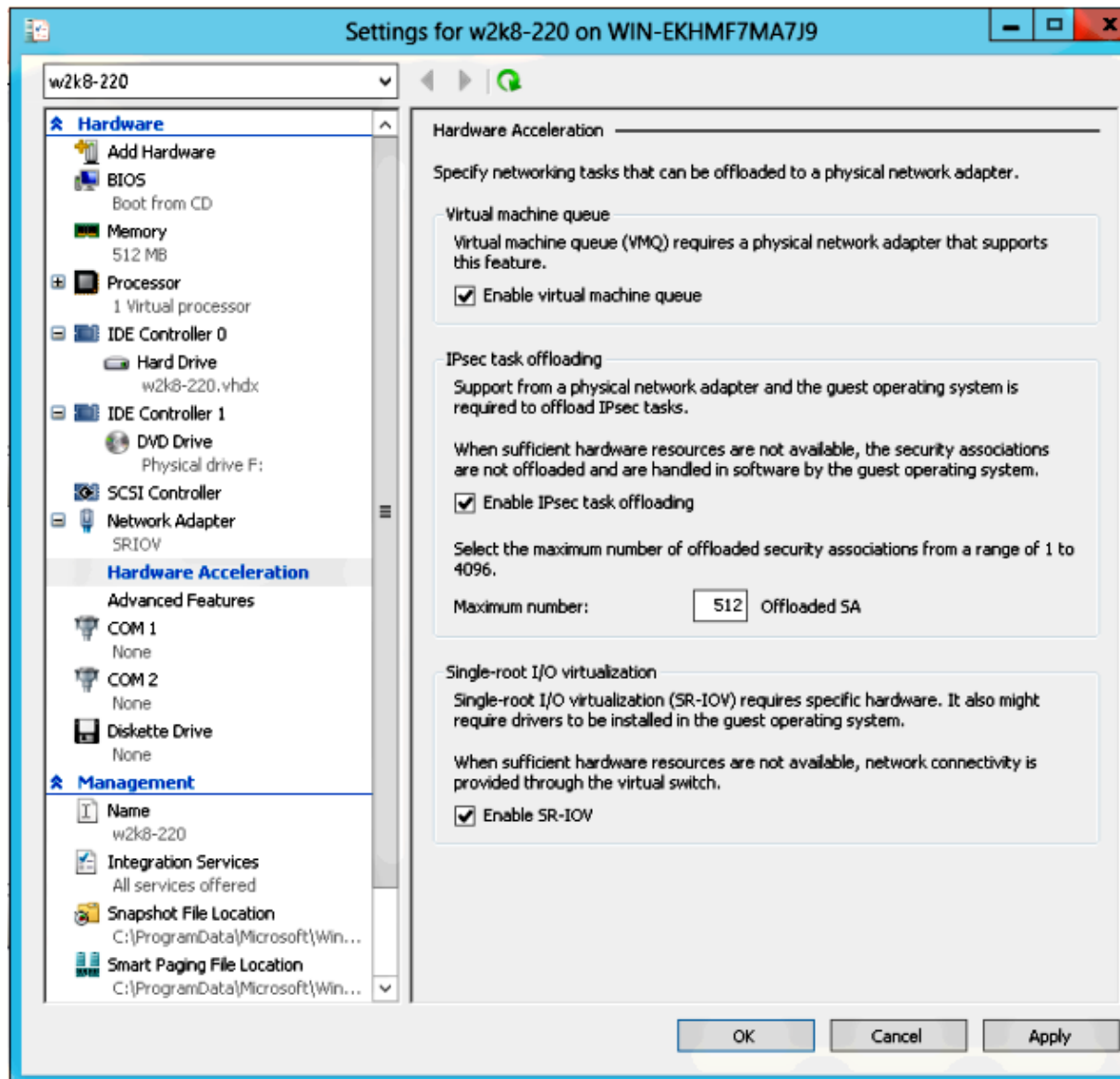
- ◆ On the Windows 2012 host, create a *virtual switch* with the Virtual Switch manager. This switch is used for SR-IOV.
- ◆ When you create the switch, choose *Enable single-root I/O virtualization (SR-IOV)*. This setting is enabled only when you create the virtual switch.



- ◆ From the Extensions section, enable the *Cisco VMFex Switch* forwarding extension.



- ◆ Attach the *network adapter* of the VM that is going to be on VM-FEX to this newly-created virtual switch. Also, from the Hardware Acceleration section, check the *Enable SR-IOV* check box.

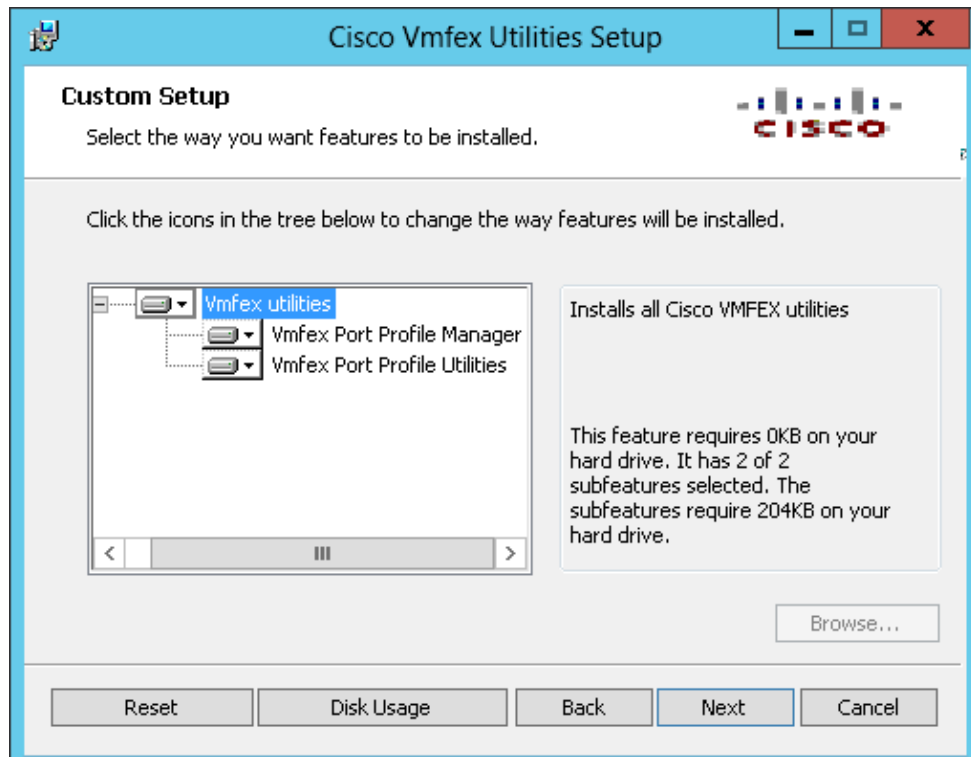


6. Install the port-profile utility and the port-profile management snap-in.

- ◆ Install the *VM-FEX port-profile utility* on the Hyper-V host.
- ◆ As an option, you can install the *port-profile manager* as well. This is essentially a Microsoft Management Console (MMC) snap-in. It can be installed on any machine that can talk to the UCS manager and the Hyper-V host. Use either the MS Powershell or the port-profile management snap-in in order to add *VM NICs* to the VM-FEX port-profiles.

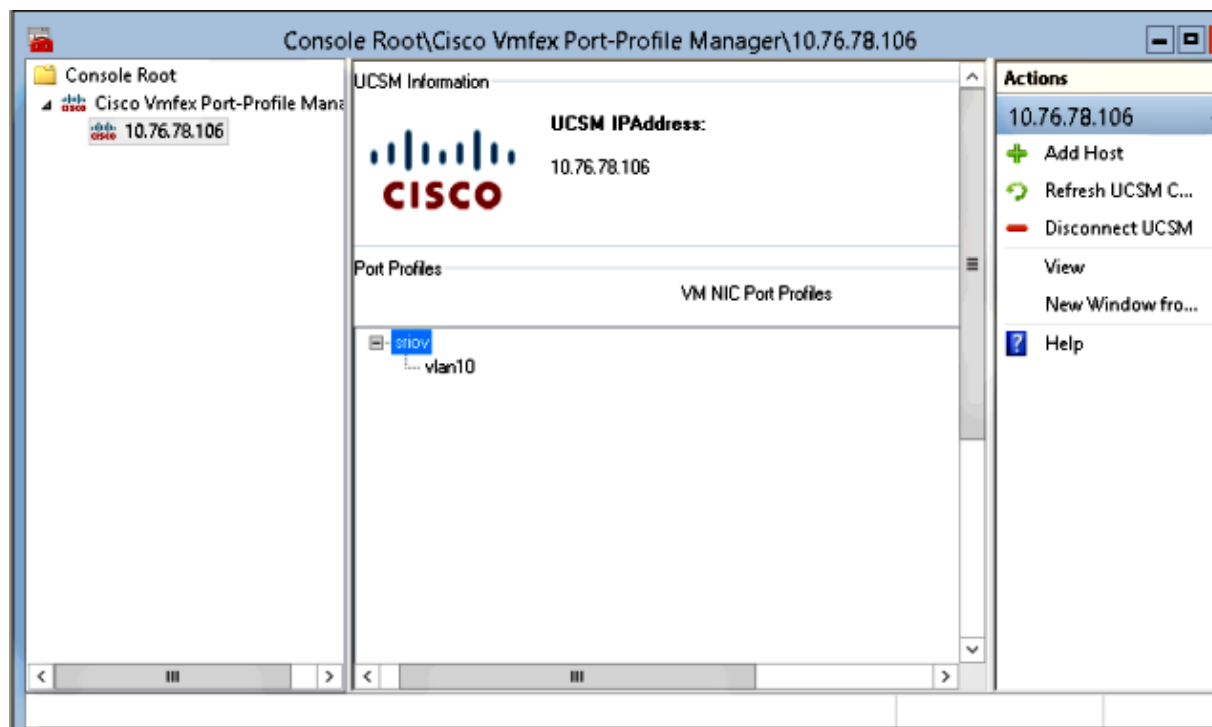
Note: In this document, only the port-profile management snap-in option is explained.

- ◆ Currently, these files are available in the Cisco Developer Network site. Download *VM-FEX Tools for Development* from the Unified Computing UCS Manager Developer Center.
- ◆ The zip bundle contains a file named *VMFEX_TOOLS_64_2.0.18.msi*. Run it as an *administrator*, and install the necessary tools. An install of the port-profile utility requires a host reboot.

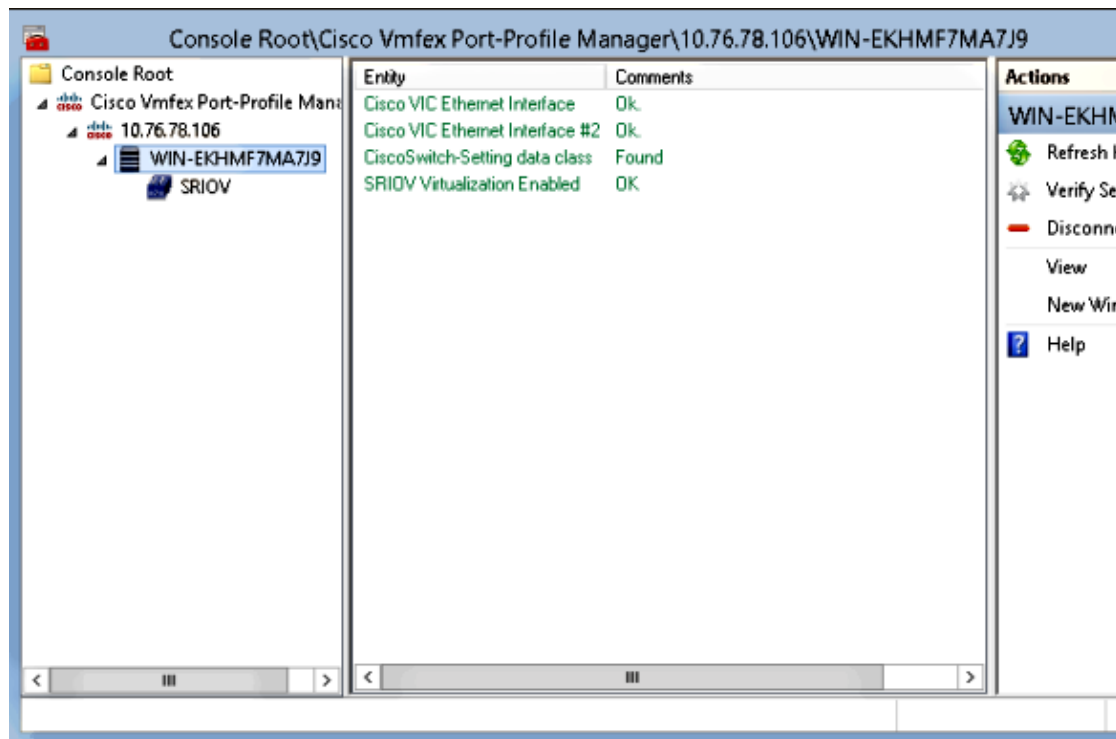


7. Attach the VM to VM-FEX (with the port-profile management snap-in here).

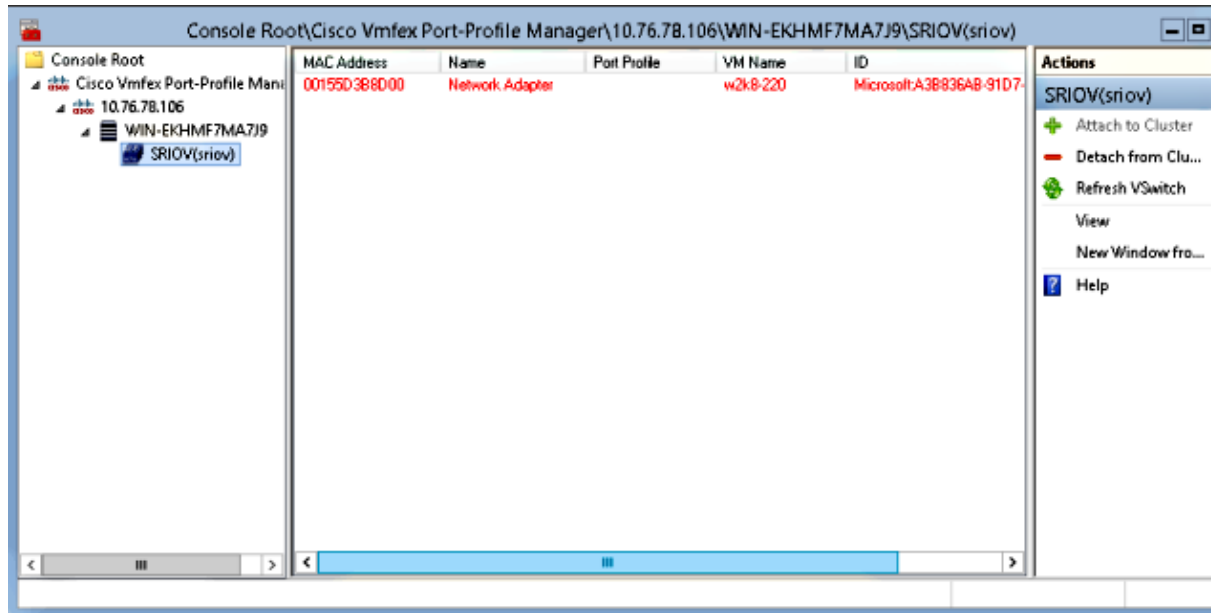
- ◆ Open *Cisco Vmfex Port-Profile Manager* from the shortcut on the desktop or from `|Program Files\Cisco Systems\VIO Software\Utilities\Ethernet Utilities\Vmfex Utilities\Snapin` as well.
- ◆ In order to attach it to the UCSM, click *Add UCSM*, and enter the *IP address*, *username*, and *password*. Once added, it lists the available clusters and the port-profiles under each cluster.



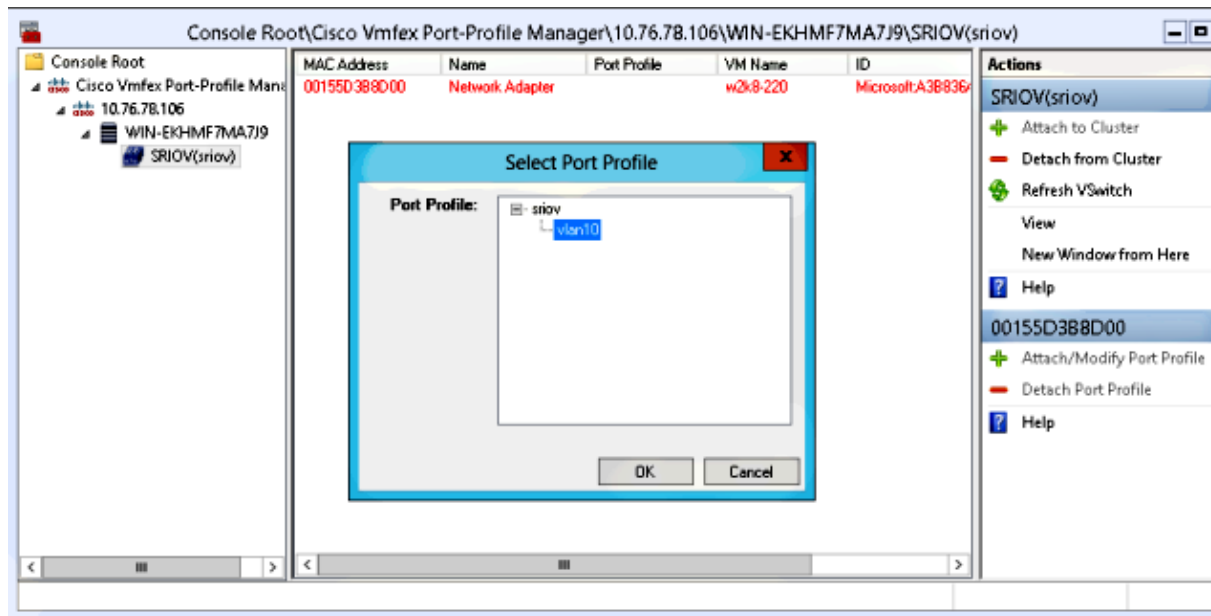
- ◆ Add the Hyper-V host with *Add Host*, which gives you the option to add a local computer or a remote computer.
 - ◇ When you add a remote computer, the host name can be used if the machine that runs the port-profile manager snap-in and the Hyper-V host are in the same domain.
 - ◇ If not, add it with the IP address. The credentials entered here should be in the form of *username@domain* for domain users and *hostname\user* for local users.
 - ◇ Once added, all virtual switches that have SR-IOV enabled in the host are displayed as well.



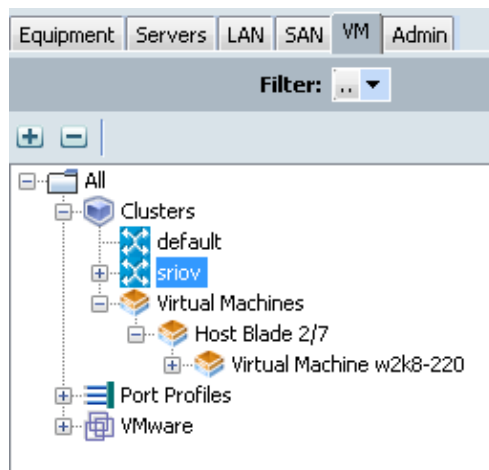
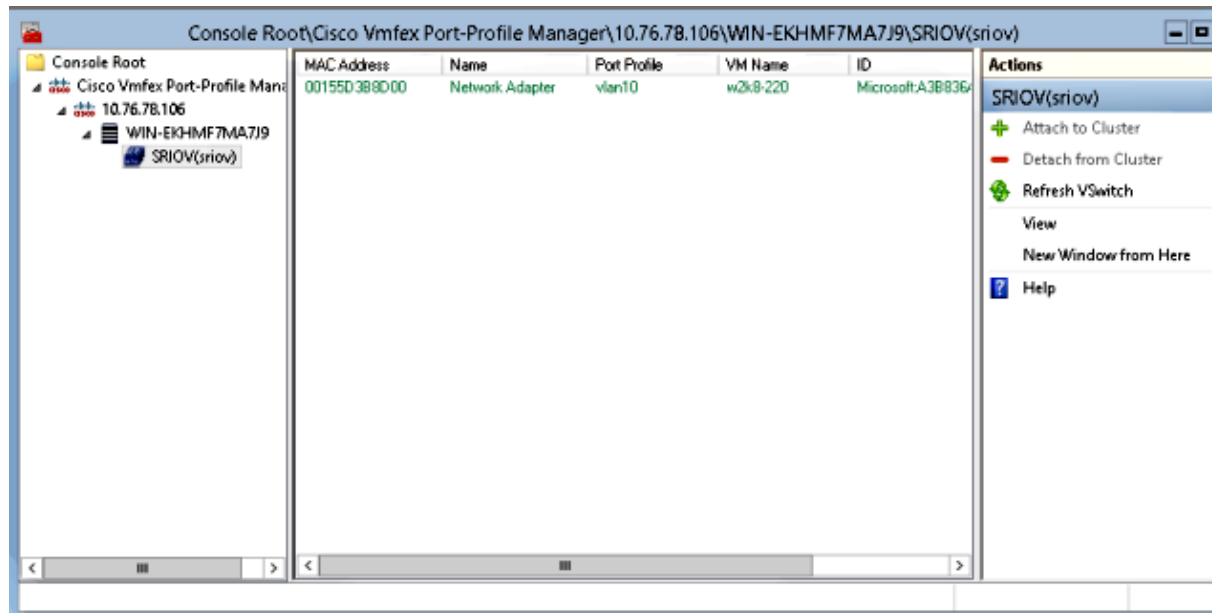
- ◆ Attach the port-profile to a cluster with the *Attach to Cluster* option. Once attached, the cluster name appears next to the port-profile name. The cluster name is not displayed in the case of the default cluster.



- ◆ In order to attach a VM, select the *VM (VM NIC)* that appears in the middle pane, and click *Attach/Modify Port profile*. The available port-profiles under the cluster are displayed. Choose the appropriate *port-profile*.



- ◆ Once added, the display turns from Red to Green for the Network Adapter. Also, the VM shows as attached from the UCSM GUI.



Verify

There is currently no verification procedure available for this configuration.

Troubleshoot

Here is a list of common issues encountered when you configure VM-FEX with Hyper-V:

- **The virtual switch does not show up when you add the host with the port-profile management snap-in:** SR-IOV is not enabled for the virtual switch inside Hyper-V.
- **The cluster name does not appear next to the virtual switch after you add it to the cluster:** If the cluster name is >38 characters (including hyphen), Cisco bug ID CSCue71661 can cause this problem.
- **You are not able to add UCSM with the management snap-in:** Verify that the UCSM is reachable from the snap-in client and that HTTPS is enabled on the UCS. You can verify this on the GUI from *Admin > Communication Management > Communication Services*.

Related Information

- *Cisco UCS Manager VM-FEX for Hyper-V GUI Configuration Guide, Release 2.1*
- *PCI-SIG SR-IOV Primer: An Introduction to SR-IOV Technology*
- *Everything you wanted to know about SR-IOV in Hyper-V. Part 1*
- *Technical Support & Documentation – Cisco Systems*

Updated: Aug 25, 2014

Document ID: 116374
