

Install Cluster Container License on FMC

Contents

[Introduction](#)

[What's New](#)

[Prerequisites, Supported Platforms, Licensing](#)

[Minimum Software & Hardware Platforms](#)

[Devices Displayed as Containers in Smart Licensing Page](#)

[Feature Details](#)

[Functional Feature Description](#)

[Contrasting Previous to This Release](#)

[Firewall Management Center Walkthrough](#)

[Smart Licensing Page](#)

[Edit Licenses Pre-7.4](#)

[Edit Licenses in 7.4](#)

[Edit Performance Tier \(FTDv\)](#)

[SLR Page in FMC](#)

[FMC REST APIs](#)

[REST APIs](#)

[Troubleshooting / Diagnostics](#)

[Licensing Troubleshooting and Serviceability](#)

Introduction

This document describes the Smart License Cluster container configuration of Firepower Management Center.

What's New

- You can update the feature licenses on all cluster nodes at once from the Smart Licensing page of FMC.
- You can update the performance tier for all nodes in a cluster at once from the Licensing page of FMC.
- Cluster Container License and Tier update support from the FMC REST API.

Prerequisites, Supported Platforms, Licensing

Minimum Software & Hardware Platforms

Application and Minimum Version	Supported Managed Platform(s) and Version	Manager(s)
---------------------------------	---	------------

Secure Firewall 7.4	All which support FTD 7.4 cluster	FMC 7.4
---------------------	-----------------------------------	---------

Devices Displayed as Containers in Smart Licensing Page

FTD	
Multi-instances devices	No
HA devices	Yes
Clustered devices	Yes

- FTD HA'd devices have always been displayed as container and there is no change in that behavior.
- Multi Instance devices are displayed as standalone by default, unless they are part of HA / Cluster.
- New to FMC 7.4 are Clustered devices, which would appear as Container in the Smart Licensing page.

Feature Details

Functional Feature Description

- From the FMC licensing page, you can select the cluster and assign licenses and, for FTDv, performance tier.
- From the FMC REST API, you can assign feature licenses to the entire cluster by giving a single node's UUID from both device license and device records endpoints.



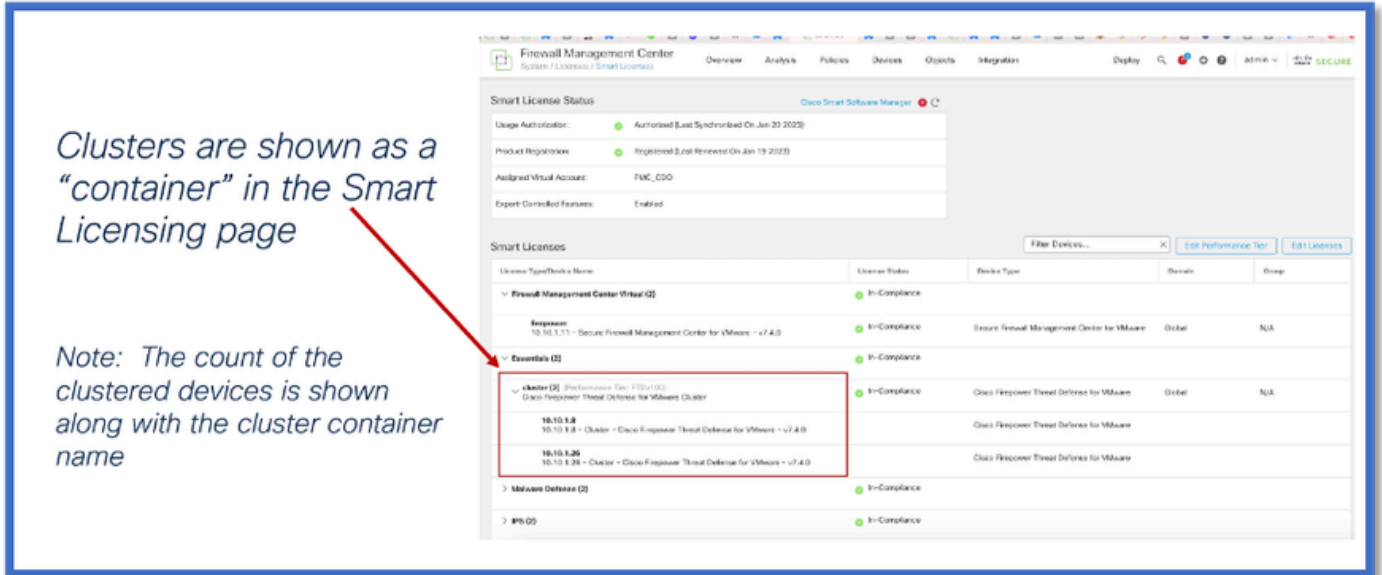
Note: The number of entitlements consumed has not changed. Each chassis continues to consume one license. FMC shows the number of devices and the number of licenses consumed.

Contrasting Previous to This Release

In Secure Firewall 7.3 and before		New to Secure Firewall 7.4
<ul style="list-style-type: none">• Only HA'd devices are shown as a container.• Clustered nodes are listed as standalone devices in the Smart Licensing page.		<ul style="list-style-type: none">• Clustered, as well as HA'd devices, are shown as a container in the Smart Licensing page.

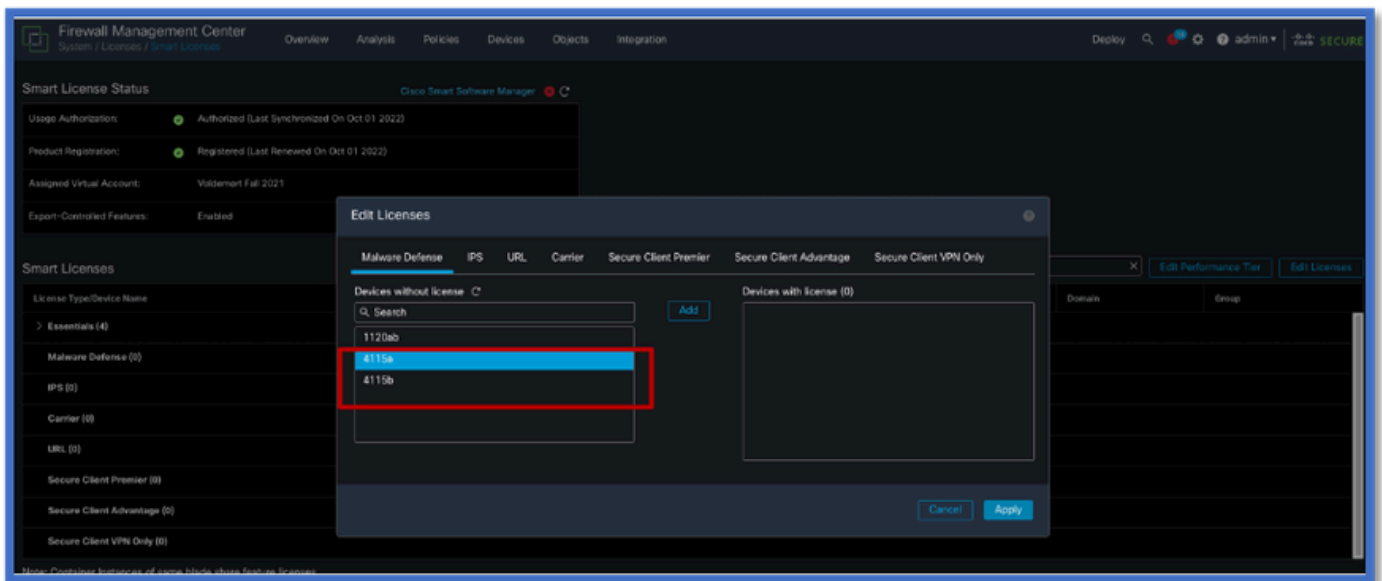
Firewall Management Center Walkthrough

Smart Licensing Page



Edit Licenses Pre-7.4

This image shows the Edit Licenses dialog on a 7.3 FMC where the 4115 devices are in a cluster. Notice that the devices show up individually.



Edit Licenses in 7.4

From 7.4, you can select the Cluster name for assigning licenses.

Firewall Management Center
System / Licenses / Smart Licenses

Overview Analysis Policies Devices Objects Integration Deploy admin **SECURE**

Smart License Status Cisco Smart Software Manager

Usage Authorization: Authorized (Last Synchronized On Jan 20 2023)

Product Registration: Registered (Last Renewed On Jan 19 2023)

Assigned Virtual Account:

Export-Controlled Features:

Smart Licenses

License Type/Device Name

- Firewall Management Center VM
- firepower 10.10.1.11 - Secure Firewall
- Essentials (2)
- cluster (2) (Performance Tier) Cisco Firepower Threat Defense
 - 10.10.1.8 10.10.1.8 - Cluster - Cisco Firepower Threat Defense for VMware
 - 10.10.1.26 10.10.1.26 - Cluster - Cisco Firepower Threat Defense for VMware - v7.4.0
- Malware Defense (2) In-Compliance
- IPS (2) In-Compliance

Edit Licenses

Malware Defense **IPS** URL Carrier Secure Client Premier Secure Client Advantage Secure Client VPN Only

Devices without license Clear

Search Add

cluster

Devices with license (2)

cluster Remove

Cancel Apply



Note: The count of the clustered devices is shown along with the cluster name.

Edit Performance Tier (FTDv)

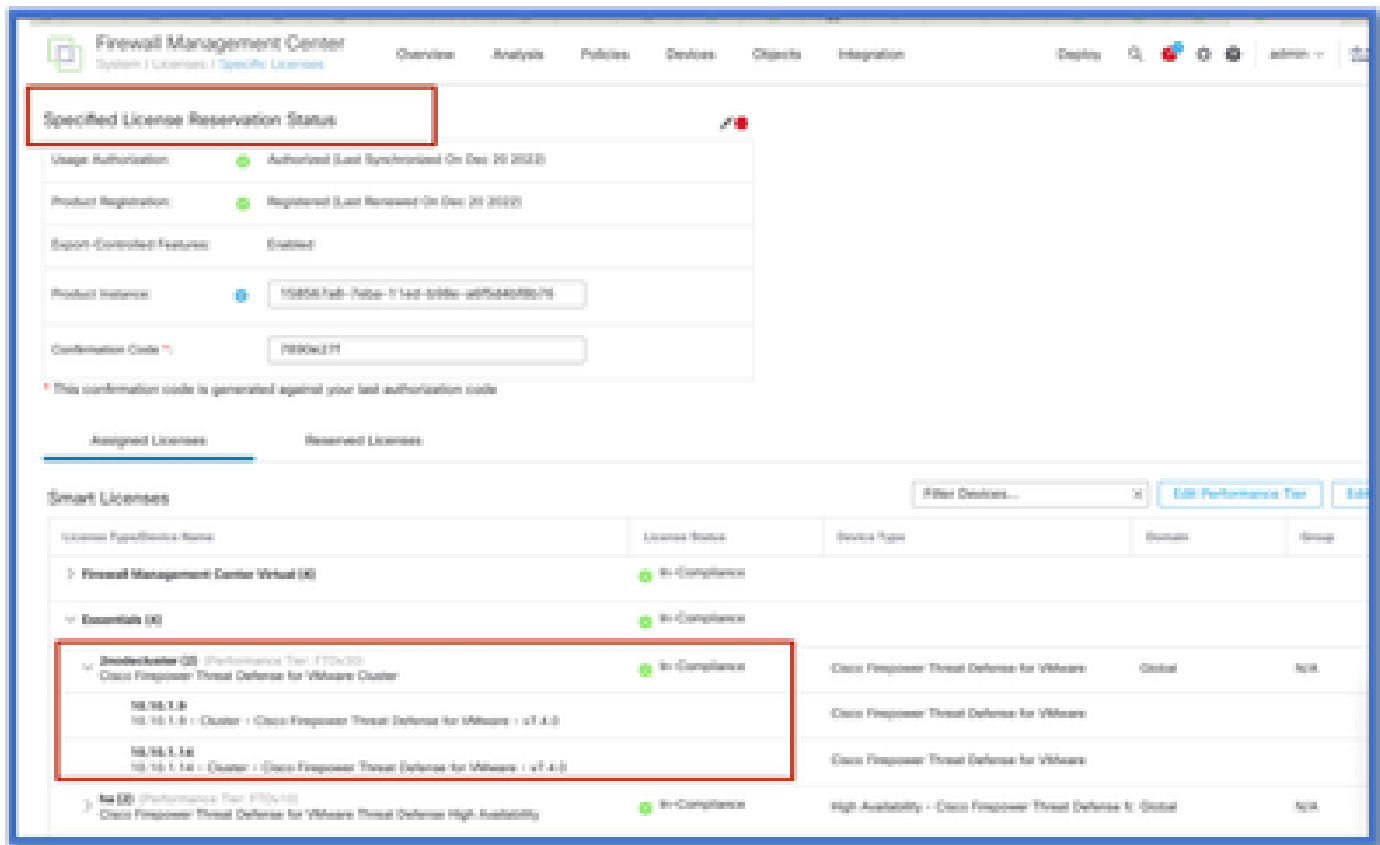
For FTDv clusters, you can select all nodes of the cluster and assign performance tier.



Note: The count of the clustered devices is shown along with the cluster container name.

SLR Page in FMC

Cluster is shown in SLR page of FMC.



FMC REST APIs

REST APIs

GETALL : /api/fmc_platform/v1/license/devicelicense
Fetch a list of all licenses of all the nodes of cluster device.

GET : /api/fmc_platform/v1/license/devicelicense/{objectId}/
Fetch a list of all licenses of a particular node of the cluster device.

PUTALL : /api/fmc_platform/v1/license/devicelicense
Edit licenses of all the nodes of the cluster.

PUT : //api/fmc_platform/v1/license/devicelicense/{objectId}
Edit licenses of a particular node of the cluster.

PUT : /api/fmc_config/v1/domain/{domainUUID}/devices/devicerecord/{objectId}
Edit Licenses of a particular node of the cluster.

GET : /api/fmc_config/v1/domain/{domainUUID}/devices/devicerecord/{objectId}
Edit Fetch a list of licenses of a particular node of the cluster.

Troubleshooting / Diagnostics

Licensing Troubleshooting and Serviceability

- Troubleshooting and serviceability for licensing in FMC is unchanged.
- FMC uses the same scripts and logs as before:

sch.log

sam.log

sa_process_logs.log

smart_agent.log