

# Configuring IPSec Redundancy over ISDN Using Dialer Watch

Document ID: 23100

## Contents

### Introduction

#### Prerequisites

- Requirements
- Components Used
- Conventions

#### Configure

- Network Diagram
- Configurations

#### Verify

- Sample Command Output

#### Troubleshoot

- Troubleshooting Commands

#### Related Information

## Introduction

This document provides a sample configuration how to encrypt traffic from the network behind Router 1 to the network behind Router 2 (the Loopback 0s are used as networks in this example). If the primary link (Ethernet) between Router 1 and Router 2 goes down, IP Security (IPSec) traffic continues to flow through the secondary link (ISDN). There are several ways to achieve this objective; you can use dialer watch, backup interface, demand circuit, and floating static. This sample configuration demonstrates the dialer watch mechanism. For more information on other features, refer to Evaluating Backup Interfaces, Floating Static Routes, and Dialer Watch for DDR Backup.

## Prerequisites

### Requirements

There are no specific requirements for this document.

### Components Used

The information in this document is based on these software and hardware versions:

- Cisco 2621 and 3640 Routers
- Cisco IOS® Software Release 12.3(3)

The information presented in this document was created from devices in a specific lab environment. All of the devices used in this document started with a cleared (default) configuration. If your network is live, make sure that you understand the potential impact of any command before you use it.

## Conventions

For more information on document conventions, refer to the Cisco Technical Tips Conventions.

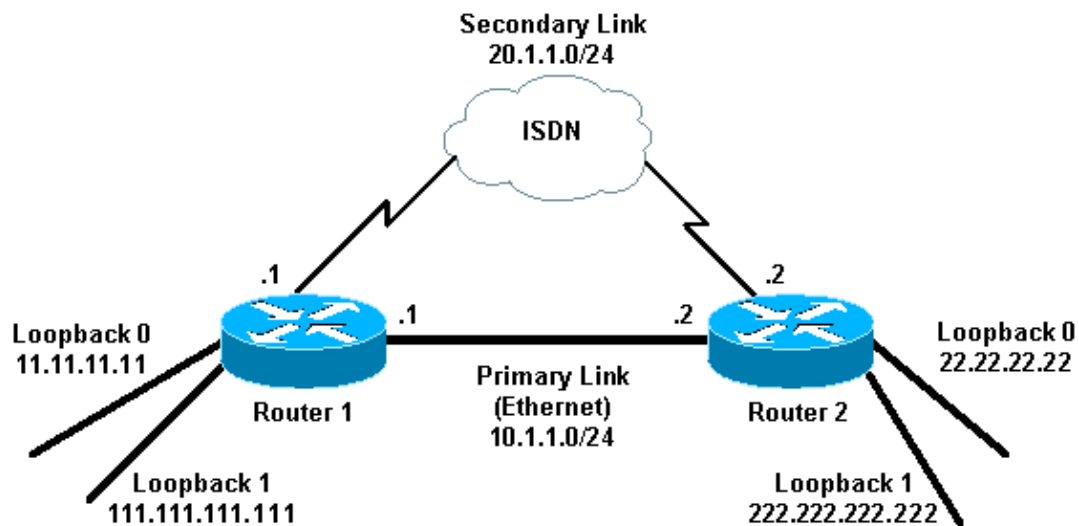
## Configure

In this section, you are presented with the information to configure the features described in this document.

**Note:** To find additional information on the commands used in this document, use the Command Lookup Tool (registered customers only) .

## Network Diagram

This document uses the network setup shown in the diagram here:



## Configurations

This document uses the configurations shown here:

- Router 1 (2621)
- Router 2 (3640)

Router 1 (2621)
<pre>r1#show running-config Building configuration...  Current configuration : 2244 bytes ! version 12.3 service timestamps debug uptime service timestamps log uptime no service password-encryption ! hostname r1 ! boot-start-marker boot-end-marker ! !</pre>

```
username r2 password 0 cisco

!--- This is the username for remote router (Router 2)
!--- and shared secret. Shared secret (used for Challenge Handshake
!--- Authentication Protocol [CHAP]) must be the same on both sides.

no aaa new-model
ip subnet-zero
ip tcp synwait-time 5
!
!
no ip domain lookup
!
ip audit notify log
ip audit po max-events 100
ip ssh break-string
no ftp-server write-enable
!
!
!
crypto isakmp policy 10
  hash md5
  authentication pre-share
crypto isakmp key cisco address 222.222.222.222
!
!
  crypto ipsec transform-set abc esp-des esp-md5-hmac
!
crypto map cisco local-address Loopback1
crypto map cisco 10 ipsec-isakmp
  set peer 222.222.222.222

!--- Peer address, Loopback 1 of Router 2

  set transform-set abc
  match address 101

!--- Networks to encrypt (Loopback 0 on both ends)

!
isdn switch-type basic-ts013
!
!
!
!
!
!
!
!
!
no voice hpi capture buffer
no voice hpi capture destination
!
!
!
!
!
interface Loopback0

!--- Network to encrypt

  ip address 11.11.11.11 255.255.255.0
!
interface Loopback1
```

```
!--- Used for peer address for IPSec

ip address 111.111.111.111 255.255.255.0
!
interface FastEthernet0/0

!--- Primary link

ip address 10.1.1.1 255.255.255.0
no ip route-cache

!--- Enable process switching

no ip mroute-cache
duplex auto
speed auto
crypto map cisco

!--- Apply crypto map on primary interface

!
interface BRI0/0
no ip address
encapsulation ppp
no ip route-cache
no ip mroute-cache
dialer pool-member 1
isdn switch-type basic-ts013
no cdp enable
!
interface Dialer1

!--- Backup link

ip address 20.1.1.1 255.255.255.0
encapsulation ppp
no ip route-cache

!--- Enable process switching

ip ospf cost 9999

!--- Increase the cost so that when primary comes up again,
!--- Open Shortest Path First (OSPF) routes are
!--- preferred using the primary link (due to better cost).

no ip mroute-cache
dialer idle-timeout 180
dialer pool 1
dialer string 94134028
dialer watch-group 1

!--- Enable dialer watch on this backup interface.
!--- Watch the route specified with the dialer watch-list 1 command.

dialer-group 1

!--- Apply interesting traffic defined in dialer list 1.

no peer neighbor-route
ppp authentication chap
crypto map cisco

!--- Apply crypto map on backup interface.

!
```

```

router ospf 1

!--- OSPF advertising Loopback 0, Loopback 1,
!--- primary, and secondary links.

log-adjacency-changes
network 10.1.1.0 0.0.0.255 area 0
network 11.11.11.0 0.0.0.255 area 0
network 20.1.1.0 0.0.0.255 area 0
network 111.111.111.0 0.0.0.255 area 0
!
ip http server
no ip http secure-server
ip classless
!
!
access-list 101 permit ip host 11.11.11.11 host 22.22.22.22

!--- Access control list (ACL) 101 is the
!--- IPSec traffic used in match address.

access-list 110 deny ip any any

!--- ACL 110 is for the dialer list to mark
!--- all IP traffic uninteresting. The dialer watch will
!--- trigger the ISDN backup when the route is lost.

dialer watch-list 1 ip 222.222.222.222 255.255.255.255

!--- This defines the route(s) to be watched.
!--- This exact route (including subnet mask)
!--- must exist in the routing table.
!--- Use the dialer watch-group 1 command to apply this
!--- list to the backup interface.

dialer watch-list 1 delay route-check initial 10
dialer-list 1 protocol ip list 110

!--- Interesting traffic is defined by ACL 110.
!--- This is applied to Dialer1 using dialer group 1.

!
!
!
dial-peer cor custom
!
!
!
!
!
line con 0
  exec-timeout 0 0
  logging synchronous
  escape-character 27
line aux 0
line vty 0 4
  login
!
end

```

### Router 2 (3640)

```

r2#show running-config
Building configuration...

```

```
Current configuration : 2311 bytes
!
version 12.3
service timestamps debug datetime msec
service timestamps log datetime msec
no service password-encryption
!
hostname r2
!
boot-start-marker
boot-end-marker
!
username r1 password 0 cisco

!--- This is the username for remote router (Router 1)
!--- and shared secret. Shared secret (used for CHAP)
!--- must be the same on both sides.

no aaa new-model
ip subnet-zero
ip tcp synwait-time 5
!
!
no ip domain lookup
!
ip audit notify log
ip audit po max-events 100
ip ssh break-string
no ftp-server write-enable
!
!
!
crypto isakmp policy 10
  hash md5
  authentication pre-share
crypto isakmp key cisco address 111.111.111.111
!
!
  crypto ipsec transform-set abc esp-des esp-md5-hmac
!
!
crypto map cisco local-address Loopback1
crypto map cisco 10 ipsec-isakmp
  set peer 111.111.111.111

!--- Peer address, Loopback 1 of Router 1

  set transform-set abc
  match address 101

!--- Networks to encrypt (Loopback 0 on both ends)

!
isdn switch-type basic-ts013
!
!
!
!
!
!
!
!
!
no voice hpi capture buffer
no voice hpi capture destination
!
```

```
!  
!  
!  
!  
!  
interface Loopback0  
  ip address 22.22.22.22 255.255.255.0  
  
!--- Network to encrypt  
  
!  
interface Loopback1  
  ip address 222.222.222.222 255.255.255.0  
  
!--- Used for peer address for IPSec.  
  
!  
interface BRI0/0  
  no ip address  
  encapsulation ppp  
  no ip route-cache  
  no ip mroute-cache  
  dialer pool-member 1  
  isdn switch-type basic-ts013  
!  
interface Ethernet0/0  
  
!--- Primary link  
  
  ip address 10.1.1.2 255.255.255.0  
  no ip route-cache  
  
!--- Enable process switching.  
  
  no ip mroute-cache  
  half-duplex  
  crypto map cisco  
  
!--- Apply crypto map on primary interface.  
  
!  
interface Dialer1  
  ip address 20.1.1.2 255.255.255.0  
  encapsulation ppp  
  no ip route-cache  
  ip ospf cost 9999  
  no ip mroute-cache  
  dialer pool 1  
  dialer idle-timeout 600  
  dialer remote-name r1  
  
!--- Dialer for the BRI interface of the remote router  
!--- without a dial string.  
  
  dialer-group 1  
  
!--- Apply interesting traffic defined in dialer list 1.  
  
  ppp authentication chap  
  crypto map cisco  
  
!--- Apply crypto map on backup interface.  
  
!  
router ospf 1  
  log-adjacency-changes
```

```

network 10.1.1.0 0.0.0.255 area 0
network 20.1.1.0 0.0.0.255 area 0
network 22.22.22.0 0.0.0.255 area 0
network 222.222.222.0 0.0.0.255 area 0
!
no ip http server
no ip http secure-server
ip classless
!
!
access-list 101 permit ip host 22.22.22.22 host 11.11.11.11
access-list 110 deny  ospf any any

!--- Mark OSPF as uninteresting.
!--- This will not allow OSPF hellos
!--- to try to bring the link up.

access-list 110 permit ip any any
dialer-list 1 protocol ip list 110

!--- Interesting traffic is defined by ACL 110.
!--- This is applied to Dialer1 using dialer group 1.

!
line con 0
  exec-timeout 0 0
  logging synchronous
  escape-character 27
line aux 0
line vty 0 4
  login
!
end

```

## Verify

This section provides information you can use to confirm whether your configuration functions properly.

## Sample Command Output

Certain **show** commands are supported by the Output Interpreter Tool (registered customers only) , which allows you to view an analysis of **show** command output.

- Routing table of Router 1 (2621) primary link up

```
r1#show ip route
```

```

Codes: C - connected, S - static, R - RIP, M - mobile, B - BGP
       D - EIGRP, EX - EIGRP external, O - OSPF, IA - OSPF inter area
       N1 - OSPF NSSA external type 1, N2 - OSPF NSSA external type 2
       E1 - OSPF external type 1, E2 - OSPF external type 2
       I - IS-IS, su - IS-IS summary, L1 - IS-IS level-1,
       L2 - IS-IS level-2, ia - IS-IS inter area,
       * - candidate default, U - per-user static route,
       o - ODR, P - periodic downloaded static route

```

```
Gateway of last resort is not set
```

```

      222.222.222.0/32 is subnetted, 1 subnets
O       222.222.222.222 [110/2] via 10.1.1.2, 00:00:25, FastEthernet0/0
      20.0.0.0/24 is subnetted, 1 subnets
C       20.1.1.0 is directly connected, Dialer1

```



```

22.0.0.0/32 is subnetted, 1 subnets
O    22.22.22.22 [110/2] via 10.1.1.2, 00:00:25, FastEthernet0/0
111.0.0.0/24 is subnetted, 1 subnets
C    111.111.111.0 is directly connected, Loopback1
10.0.0.0/24 is subnetted, 1 subnets
C    10.1.1.0 is directly connected, FastEthernet0/0
11.0.0.0/24 is subnetted, 1 subnets
C    11.11.11.0 is directly connected, Loopback0

```

• Routing table of Router 2 (3640) primary link up

```
r2#show ip route
```

```

Codes: C - connected, S - static, R - RIP, M - mobile, B - BGP
       D - EIGRP, EX - EIGRP external, O - OSPF, IA - OSPF inter area
       N1 - OSPF NSSA external type 1, N2 - OSPF NSSA external type 2
       E1 - OSPF external type 1, E2 - OSPF external type 2
       I - IS-IS, su - IS-IS summary, L1 - IS-IS level-1,
       L2 - IS-IS level-2, ia - IS-IS inter area,
       * - candidate default, U - per-user static route,
       o - ODR, P - periodic downloaded static route

```

Gateway of last resort is not set.

```

C    222.222.222.0/24 is directly connected, Loopback1
    20.0.0.0/24 is subnetted, 1 subnets
C    20.1.1.0 is directly connected, Dialer1
    22.0.0.0/24 is subnetted, 1 subnets
C    22.22.22.0 is directly connected, Loopback0
111.0.0.0/32 is subnetted, 1 subnets
O    111.111.111.111 [110/11] via 10.1.1.1, 00:06:22, Ethernet0/0
    10.0.0.0/24 is subnetted, 1 subnets
C    10.1.1.0 is directly connected, Ethernet0/0
11.0.0.0/32 is subnetted, 1 subnets
O    11.11.11.11 [110/11] via 10.1.1.1, 00:06:23, Ethernet0/0

```

• OSPF neighbor of Router 1 (2621) primary link up

```
r1#show ip ospf neighbor
```

Neighbor ID	Pri	State	Dead Time	Address	Interface
222.222.222.222	1	FULL/DR	00:00:33	10.1.1.2	<b>FastEthernet0/0</b>

• OSPF neighbor of Router 2 (3640) primary link up

```
r2#show ip ospf neighbor
```

Neighbor ID	Pri	State	Dead Time	Address	Interface
111.111.111.111	1	FULL/BDR	00:00:31	10.1.1.1	<b>Ethernet0/0</b>

• Routing table of Router 1 (2621) primary link down

```
r1#show ip route
```

```

Codes: C - connected, S - static, I - IGRP, R - RIP, M - mobile, B - BGP
       D - EIGRP, EX - EIGRP external, O - OSPF, IA - OSPF inter area
       N1 - OSPF NSSA external type 1, N2 - OSPF NSSA external type 2
       E1 - OSPF external type 1, E2 - OSPF external type 2, E - EGP
       I - IS-IS, L1 - IS-IS level-1, L2 - IS-IS level-2,
       ia - IS-IS inter area, * - candidate default,
       U - per-user static route, o - ODR,
       P - periodic downloaded static route

```

Gateway of last resort is not set.

```

222.222.222.0/32 is subnetted, 1 subnets
O    222.222.222.222 [110/10000] via 20.1.1.2, 00:00:09, Dialer1
    20.0.0.0/24 is subnetted, 1 subnets
C    20.1.1.0 is directly connected, BRI0/0
    20.0.0.0/24 is subnetted, 1 subnets
C    20.1.1.0 is directly connected, Dialer1
22.0.0.0/32 is subnetted, 1 subnets

```

```

O      22.22.22.22 [110/10000] via 20.1.1.2, 00:00:09, Dialer1
      111.0.0.0/24 is subnetted, 1 subnets
C      111.111.111.0 is directly connected, Loopback1
      10.0.0.0/24 is subnetted, 1 subnets
O      10.1.1.0 [110/10009] via 20.1.1.2, 00:00:09, Dialer1
      11.0.0.0/24 is subnetted, 1 subnets
C      11.11.11.0 is directly connected, Loopback0

```

• Routing table of Router 2 (3640) primary link down

```
r2#show ip route
```

```

Codes: C - connected, S - static, I - IGRP, R - RIP, M - mobile, B - BGP
       D - EIGRP, EX - EIGRP external, O - OSPF, IA - OSPF inter area
       N1 - OSPF NSSA external type 1, N2 - OSPF NSSA external type 2
       E1 - OSPF external type 1, E2 - OSPF external type 2, E - EGP
       I - IS-IS, L1 - IS-IS level-1, L2 - IS-IS level-2,
       ia - IS-IS inter area, * - candidate default,
       U - per-user static route, o - ODR,
       P - periodic downloaded static route

```

```
Gateway of last resort is not set.
```

```

C      222.222.222.0/24 is directly connected, Loopback1
      20.0.0.0/8 is variably subnetted, 2 subnets, 2 masks
C      20.1.1.0/24 is directly connected, Dialer1
C      20.1.1.1/32 is directly connected, Dialer1
      22.0.0.0/24 is subnetted, 1 subnets
C      22.22.22.0 is directly connected, Loopback0
      111.0.0.0/32 is subnetted, 1 subnets
O      111.111.111.111 [110/10000] via 20.1.1.1, 00:00:07, Dialer1
      10.0.0.0/24 is subnetted, 1 subnets
C      10.1.1.0 is directly connected, Ethernet0/0
      11.0.0.0/32 is subnetted, 1 subnets
O      11.11.11.11 [110/10000] via 20.1.1.1, 00:00:08, Dialer1

```

• OSPF neighbor of Router 1 (2621) primary link down

```
r1#show ip ospf neighbor
```

Neighbor ID	Pri	State	Dead Time	Address	Interface
222.222.222.222	0	FULL/	- 00:00:32	20.1.1.2	<b>Dialer1</b>

• OSPF neighbor of Router 2 (3640) primary link down

```
r2#show ip ospf neighbor
```

Neighbor ID	Pri	State	Dead Time	Address	Interface
111.111.111.111	0	FULL/	- 00:00:31	20.1.1.1	<b>Dialer1</b>

The **debug dialer** and several **show** command outputs displayed here show the primary link as failed, and dialer watch recognizes the lost route. The router then initiates the backup link and OSPF converges through the secondary link. Each time the idle timeout expires, the router checks whether the primary link is down. If the primary link is found to be up, dialer watch disconnects the backup link after the disable timer expires and tears down the call, and OSPF converges by way of the primary link as usual.

These are the **debug** and **show** command outputs of Router one (2621), when the primary link goes down and is brought up again.

```
r1#show debug
```

```
Dial on demand:
```

```
Dial on demand events debugging is on
```

```
r1#
```

```
03:00:21: %LINEPROTO-5-UPDOWN: Line protocol on Interface FastEthernet0/0,  
changed state to down
```

```
!--- Primary link was brought down manually when you disable the switch ports.
```

03:00:21: %OSPF-5-ADJCHG: Process 1, Nbr 222.222.222.222 on FastEthernet0/0  
from FULL to DOWN, Neighbor Down: Interface down or detached

*!--- Primary link goes down.  
!--- OSPF loses neighbor adjacency.*

r1#

*!--- Dialer watch kicks in.*

03:00:21: DDR: **Dialer Watch: watch-group = 1**  
03:00:21: DDR: **network 222.222.222.222/255.255.255.255 DOWN,**  
03:00:21: DDR: **primary DOWN**  
03:00:21: DDR: Dialer Watch: Dial Reason: Primary of group 1 DOWN  
03:00:21: DDR: Dialer Watch: watch-group = 1,  
03:00:21: BR0/0 DDR: rotor dialout [best]  
least recent failure is also most recent failure  
03:00:21: BR0/0 DDR: rotor dialout [best] also has most recent failure  
03:00:21: BR0/0 DDR: rotor dialout [best]  
03:00:21: DDR: dialing secondary by dialer string 94134028 on Di1  
03:00:21: BR0/0 DDR: **Attempting to dial 94134028**  
03:00:21: DDR: Dialer Watch: watch-group = 1

r1#

03:00:21: DDR: **network 222.222.222.222/255.255.255.255 DOWN,**  
03:00:21: DDR: **primary DOWN**  
03:00:21: DDR: Dialer Watch: Dial Reason: Secondary of group 1 AVAILABLE  
03:00:21: DDR: Dialer Watch: watch-group = 1,  
03:00:21: DDR: Dialer Watch: watch-group = 1  
03:00:21: DDR: **network 222.222.222.222/255.255.255.255 DOWN,**  
03:00:21: DDR: **primary DOWN**  
03:00:21: DDR: Dialer Watch: Dial Reason: Secondary of group 1 AVAILABLE  
03:00:21: DDR: Dialer Watch: watch-group = 1,  
03:00:21: %ISDN-6-LAYER2UP: Layer 2 for Interface BR0/0, TEI 82 changed to up  
03:00:94489280514: %LINK-3-UPDOWN: Interface BRI0/0:1, changed state to up  
03:00:94489280516: BR0/0:1 DDR: Dialer Watch: resetting call in progress  
03:00:94489280512: BR0/0:1: interface must be fifo queue, force fifo  
03:00:94489280512: %DIALER-6-BIND: Interface BR0/0:1 bound to profile Di1  
r1#  
03:00:22: BR0/0:1 DDR: Remote name for r2  
03:00:22: BR0/0:1 DDR: dialer protocol up  
03:00:23: %LINEPROTO-5-UPDOWN: Line protocol on Interface BRI0/0:1,  
changed state to up

r1#

03:00:28: %ISDN-6-CONNECT: **Interface BRI0/0:1 is now connected to 94134028 r2**

*!--- Backup link is now connected to Router 2.*

r1#

03:00:31: %OSPF-5-ADJCHG: Process 1, Nbr 222.222.222.222 on Dialer1  
from LOADING to FULL, Loading Done

*!--- OSPF converges over the backup link.*

r1#

r1#show dialer

BRI0/0 - dialer type = ISDN

Dial String Successes Failures Last DNIS Last status  
0 incoming call(s) have been screened.  
0 incoming call(s) rejected for callback.

BRI0/0:1 - dialer type = ISDN

Idle timer (180 secs), Fast idle timer (20 secs)  
Wait for carrier (30 secs), Re-enable (15 secs)

Dialer state is data link layer up  
**Dial reason: Dialing on watched route loss**

*!--- Dial reason is the lost route.*

Interface bound to profile Dil  
**Time until disconnect 154 secs**

*!--- Idle timeout is ticking.*

Current call connected 00:00:25  
Connected to 94134028 (r2)

BRI0/0:2 - dialer type = ISDN  
Idle timer (120 secs), Fast idle timer (20 secs)  
Wait for carrier (30 secs), Re-enable (15 secs)  
Dialer state is idle

Dil - dialer type = DIALER PROFILE  
Idle timer (180 secs), Fast idle timer (20 secs)  
Wait for carrier (30 secs), Re-enable (15 secs)  
Dialer state is data link layer up  
Number of active calls = 1

Dial String	Successes	Failures	Last DNIS	Last status	Default
94134028	45	24	00:00:27	successful	Default

r1#show isdn active

-----  
ISDN ACTIVE CALLS  
-----

Call Type	Calling Number	Called Number	Remote Name	Seconds Used	Seconds Left	Seconds Idle	Charges Units/Currency
Out	---N/A---	94134028	r2	37	142	37	0

-----

r1#show dialer

BRI0/0 - dialer type = ISDN

Dial String	Successes	Failures	Last DNIS	Last status
0 incoming call(s) have been screened.				
0 incoming call(s) rejected for callback.				

BRI0/0:1 - dialer type = ISDN  
Idle timer (180 secs), Fast idle timer (20 secs)  
Wait for carrier (30 secs), Re-enable (15 secs)  
Dialer state is data link layer up  
Dial reason: Dialing on watched route loss  
Interface bound to profile Dil  
**Time until disconnect 47 secs**

*!--- Idle timeout is ticking.*

Current call connected 00:02:12  
Connected to 94134028 (r2)

BRI0/0:2 - dialer type = ISDN  
Idle timer (120 secs), Fast idle timer (20 secs)  
Wait for carrier (30 secs), Re-enable (15 secs)  
Dialer state is idle

Dil - dialer type = DIALER PROFILE  
Idle timer (180 secs), Fast idle timer (20 secs)  
Wait for carrier (30 secs), Re-enable (15 secs)  
Dialer state is data link layer up  
Number of active calls = 1

```
Dial String      Successes   Failures   Last DNIS   Last status
94134028         45          24        00:02:14   successful   Default
```

r1#show dialer

BRI0/0 - dialer type = ISDN

```
Dial String      Successes   Failures   Last DNIS   Last status
0 incoming call(s) have been screened.
0 incoming call(s) rejected for callback.
```

BRI0/0:1 - dialer type = ISDN

Idle timer (180 secs), Fast idle timer (20 secs)  
Wait for carrier (30 secs), Re-enable (15 secs)

Dialer state is data link layer up  
Dial reason: Dialing on watched route loss  
Interface bound to profile Dil

**Time until disconnect 0 secs**

*!-- Idle timeout is ticking.*

Current call connected 00:02:59

Connected to 94134028 (r2)

BRI0/0:2 - dialer type = ISDN

Idle timer (120 secs), Fast idle timer (20 secs)  
Wait for carrier (30 secs), Re-enable (15 secs)

Dialer state is idle

Dil - dialer type = DIALER PROFILE

Idle timer (180 secs), Fast idle timer (20 secs)  
Wait for carrier (30 secs), Re-enable (15 secs)

Dialer state is data link layer up

Number of active calls = 1

```
Dial String      Successes   Failures   Last DNIS   Last status
94134028         45          24        00:03:05   successful   Default
```

r1#

**03:03:22: BR0/0:1 DDR: idle timeout**

*!-- Idle timed out.*

*!-- Dialer watch checks lost routes*

*!-- again and reset the idle time since primary is not up yet.*

03:03:22: DDR: Dialer Watch: watch-group = 1

03:03:22: DDR: network 222.222.222.222/255.255.255.255 UP,

03:03:22: DDR: **primary DOWN**

*!-- Primary link is still down.*

r1#

r1#show dialer

BRI0/0 - dialer type = ISDN

```
Dial String      Successes   Failures   Last DNIS   Last status
0 incoming call(s) have been screened.
0 incoming call(s) rejected for callback.
```

BRI0/0:1 - dialer type = ISDN

Idle timer (180 secs), Fast idle timer (20 secs)  
Wait for carrier (30 secs), Re-enable (15 secs)

Dialer state is data link layer up  
Dial reason: Dialing on watched route loss  
Interface bound to profile Dil

**Time until disconnect 154 secs**

*!--- Idle timeout was reset by dialer watch.*

Current call connected 00:03:25  
Connected to 94134028 (r2)

BRI0/0:2 - dialer type = ISDN  
Idle timer (120 secs), Fast idle timer (20 secs)  
Wait for carrier (30 secs), Re-enable (15 secs)  
Dialer state is idle

Dil - dialer type = DIALER PROFILE  
Idle timer (180 secs), Fast idle timer (20 secs)  
Wait for carrier (30 secs), Re-enable (15 secs)  
Dialer state is data link layer up  
Number of active calls = 1

Dial String	Successes	Failures	Last DNIS	Last status
94134028	45	24	00:03:28	successful Default

r1#

03:04:59: %LINEPROTO-5-UPDOWN: Line protocol on Interface **FastEthernet0/0**,  
**changed state to up**

*!--- Primary link was brought up manually when the switch ports are enabled.*

r1#

r1#

03:05:50: %OSPF-5-ADJCHG: Process 1, Nbr **222.222.222.222** on **FastEthernet0/0**  
**from LOADING to FULL, Loading Done**

r1#

r1#show ip ospf neigh

Neighbor ID	Pri	State	Dead Time	Address	Interface
222.222.222.222	0	FULL/	- 00:00:02	20.1.1.2	Dialer1

*!--- OSPF over secondary link is still up because*

*!--- the call is not terminated yet, waiting for idle timeout.*

222.222.222.222	1	FULL/DR	00:00:38	10.1.1.2	FastEthernet0/0
-----------------	---	---------	----------	----------	-----------------

*!--- OSPF is now starts to converge over primary link.*

r1#

r1#show ip route 222.222.222.222

*!--- The watched route is now learned through the primary link.*

*!--- Check the cost.*

Routing entry for 222.222.222.222/32

Known via "ospf 1", distance 110, metric 2, type intra area

**Last update from 10.1.1.2 on FastEthernet0/0, 00:00:16 ago**

Routing Descriptor Blocks:

\* 10.1.1.2, from 222.222.222.222, 00:00:16 ago, via FastEthernet0/0

Route metric is 2, traffic share count is

r1#

03:06:22: BR0/0:1 DDR: idle timeout

*!--- Idle timed out.*

*!--- Dialer watch checks lost routes. Since primary is up,*

*!--- it tears down the call.*

03:06:22: DDR: Dialer Watch: watch-group = 1

03:06:22: DDR: network 222.222.222.222/255.255.255.255 UP,

03:06:22: DDR: **primary UP**

03:06:22: BR0/0:1 DDR: disconnecting call

03:06:22: BR0/0:1 DDR: **Dialer Watch: resetting call in progress**

```

03:06:22: DDR: Dialer Watch: watch-group = 1
03:06:22: DDR:      network 222.222.222.222/255.255.255.255 UP,
03:06:22: DDR:      primary UP
03:06:22: %ISDN-6-DISCONNECT: Interface BRI0/0:1
      disconnected from 94134028 r2,
      call lasted 360 seconds
03:06:96677768412: %LINK-3-UPDOWN: Interface BRI0/0:1, changed state to down
03:06:94489281195: BR0/0 DDR: has total 0 call(s), dial_out 0, dial_in 0
r1#
03:06:94489280544: %DIALER-6-UNBIND: Interface BR0/0:1
      unbound from profile Di1
03:06:23: %LINEPROTO-5-UPDOWN: Line protocol on Interface BRI0/0:1,
      changed state to down
r1#
03:06:37: %ISDN-6-LAYER2DOWN: Layer 2 for Interface BR0/0,
      TEI 82 changed to down
r1#
03:07:01: %OSPF-5-ADJCHG: Process 1, Nbr 222.222.222.222 on Dialer1
      from FULL to DOWN, Neighbor Down: Dead timer expired

!--- OSPF neighbor is down because the secondary link is down.
!--- Dead timer has expired.

r1#
r1#show ip ospf neigh

Neighbor ID      Pri   State           Dead Time   Address      Interface
222.222.222.222  1     FULL/DR         00:00:38   10.1.1.2    FastEthernet0/0

!--- OSPF neighbor is through the primary link only.

r1#u all
All possible debugging has been turned off
r1#

```

## Troubleshoot

This section provides information you can use to troubleshoot your configuration. For information on troubleshooting general issues with ISDN Layers 1, 2, and 3, refer to Using the show isdn status Command for BRI Troubleshooting.

## Troubleshooting Commands

Certain **show** commands are supported by the Output Interpreter Tool (registered customers only) , which allows you to view an analysis of **show** command output.

**Note:** Before you issue **debug** commands, refer to Important Information on Debug Commands.

These **debug** commands can be run on both IPSec peers.

- **debug crypto isakmp** Displays errors during Phase 1.
- **debug crypto ipsec** Displays errors during Phase 2.
- **debug crypto engine** Displays information from the crypto engine.

These **show** commands can be run on both IPSec peers.

- **show crypto isakmp sa** Displays all current Internet Key Exchange (IKE) security associations (SAs) at a peer.
- **show crypto ipsec sa** Displays the settings used by current [IPSec] SAs.

- **show crypto engine connections active** Displays current connections and information regarding encrypted and decrypted packets.

These **clear** commands can be used to clear SAs.

- **clear crypto isakmp** Clears the Phase one security associations.
- **clear crypto sa** Clears the Phase two security associations.

## Related Information

- [IPSec Support Page](#)
  - [Configuring and Troubleshooting DDR Backup](#)
  - [Evaluating Backup Interfaces, Floating Static Routes, and Dialer Watch for DDR Backup](#)
  - [Configuring Dial Backup Using Dialer Watch](#)
  - [Using the show isdn status Command for BRI Troubleshooting](#)
  - [Technical Support – Cisco Systems](#)
- 

[Contacts & Feedback](#) | [Help](#) | [Site Map](#)

© 2014 – 2015 Cisco Systems, Inc. All rights reserved. [Terms & Conditions](#) | [Privacy Statement](#) | [Cookie Policy](#) | [Trademarks of Cisco Systems, Inc.](#)

---

Updated: Jan 14, 2008

Document ID: 23100

---