

Configuring STUN with Modem–Sharing Devices

Document ID: 12280

Contents

Introduction

Prerequisites

- Requirements
- Components Used
- Conventions

Configure

- Network Diagram
- Configurations

Verify

Troubleshoot

Related Information

Introduction

This document provides a sample configuration to configure Serial Tunnel (STUN) with Modem–Sharing Devices (MSD).

Prerequisites

Requirements

There are no specific requirements for this document.

Components Used

This document is not restricted to specific software and hardware versions.

Conventions

For more information on document conventions, refer to Cisco Technical Tips Conventions.

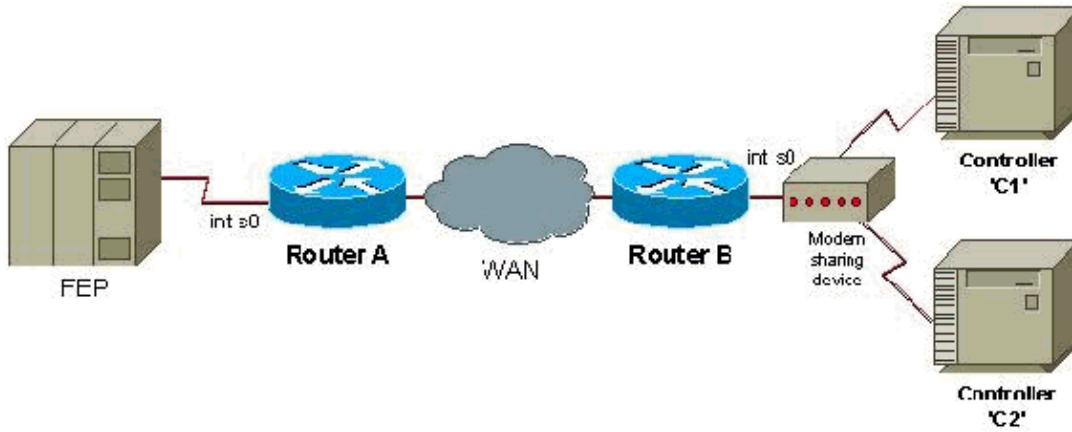
Configure

In this section, you are presented with the information to configure the features described in this document.

Note: To find additional information on the commands used in this document, use the Command Lookup Tool (registered customers only) .

Network Diagram

This document uses this network setup:



Configurations

This document uses these configurations:

- Router A
- Router B

Router A
<pre>stun peer-name 1.0.0.1 stun protocol-group 9 sdlc interface serial 0 encapsulation stun stun group 9 stun route address c1 tcp 5.0.0.1 local-ack stun route address c2 tcp 5.0.0.1 local-ack stun sdlc-role secondary sdlc address c1 sdlc address c2 interface loopback 0 ip address 1.0.0.1 255.255.255.0</pre>

Router B
<pre>stun peer-name 5.0.0.1 stun protocol-group 9 sdlc interface serial 0 encapsulation stun stun group 9 stun route address c1 tcp 1.0.0.1 local-ack stun route address c2 tcp 1.0.0.1 local-ack stun sdlc-role primary sdlc address c1 sdlc address c2 interface loopback 0 ip address 5.0.0.1 255.255.255.0</pre>

Note: Routers that attach to an MSD must use half duplex or must strap Data Terminal Ready (DTR) high, if the router serves as a DCE device. Also, IP routing and WAN configurations do not appear, for simplicity. For more details, refer to the document Configuring and Troubleshooting Serial Tunneling (STUN).

Verify

There is currently no verification procedure available for this configuration.

Troubleshoot

There is currently no specific troubleshooting information available for this configuration.

Related Information

- **STUN/BSTUN Support**
 - **Technical Support – Cisco Systems**
-

[Contacts & Feedback](#) | [Help](#) | [Site Map](#)

© 2014 – 2015 Cisco Systems, Inc. All rights reserved. [Terms & Conditions](#) | [Privacy Statement](#) | [Cookie Policy](#) | [Trademarks of Cisco Systems, Inc.](#)

Updated: Sep 09, 2005

Document ID: 12280
