

Reinitialize Replication (Subscription) on CCMP

Contents

[Introduction](#)

[Prerequisites](#)

[Requirements](#)

[Components Used](#)

[Background Information](#)

[Reinitialize Replication \(Subscription\)](#)

Introduction

This document describes the steps to reinitialize replication on Contact Center Management Portal (CCMP).

Prerequisites

Requirements

Cisco recommends that you have knowledge of these topics:

- CCMP
- Microsoft SQL Server Management Studio

Components Used

The information in this document is based on CCMP 12.5.

The information in this document was created from the devices in a specific lab environment. All of the devices used in this document started with a cleared (default) configuration. If your network is live, ensure that you understand the potential impact of any command.

Background Information

CCMP replication can break due to some data specific issue.

When you know side A database is the most accurate one and everything works fine from side A CCMP (Publisher), you can reinitialize the subscription with a new snapshot, where the new snapshot of side A database is generated and applied on the side B CCMP.

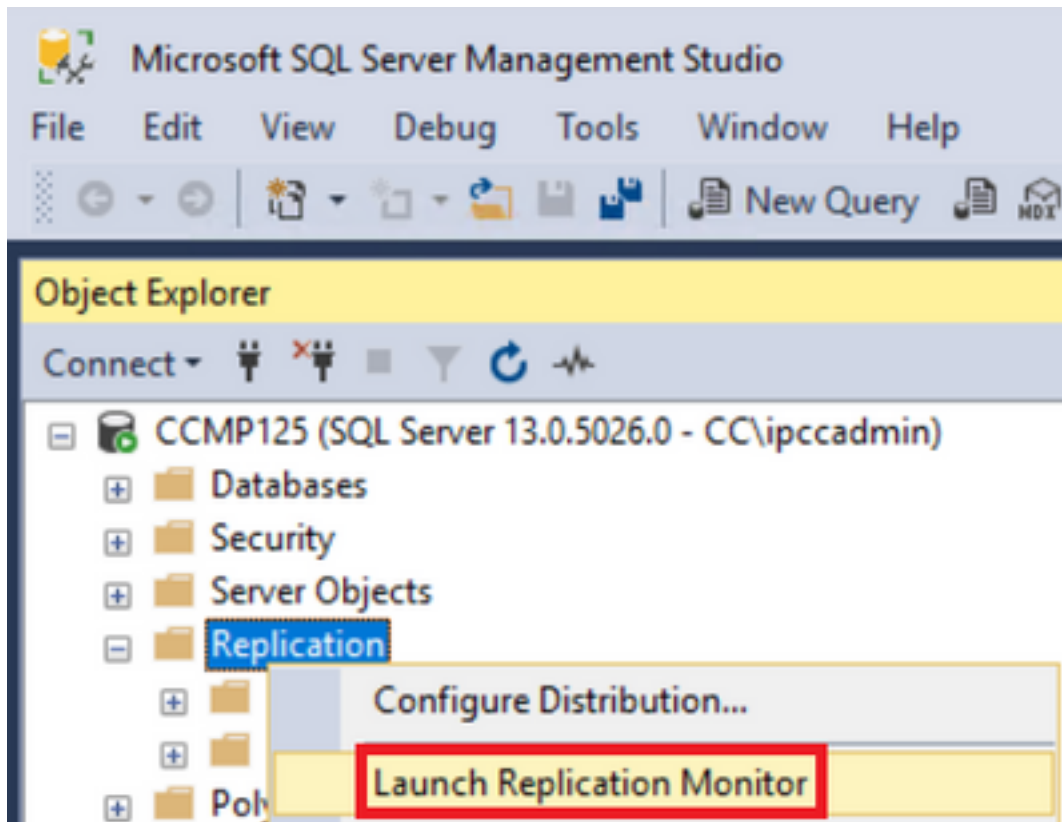
Reinitialize Replication (Subscription)

When you reinitialize the subscription, ensure that all the application services on side B are in stopped state.

These are the steps:

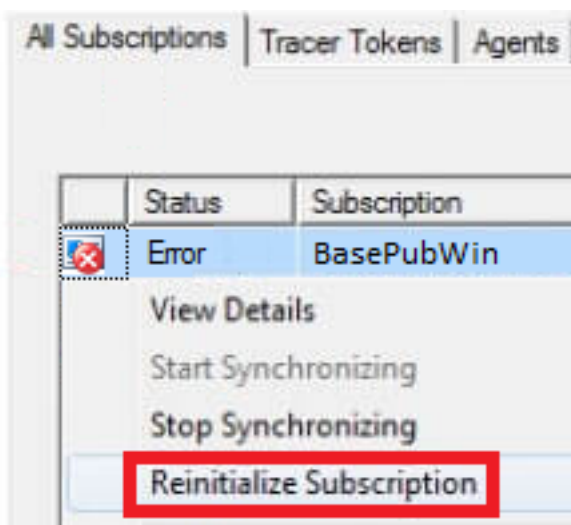
Step 1. Log in to side A CCMP (Publisher) database server and connect to side A database with Microsoft SQL Server Management Studio.

Step 2. In solution explorer, right click **Replication** folder and click **Launch Replication Monitor**.



Step 3. In the left pane, select the failed replication (for example BasePubWin).

Step 4. Right click the subscription under **All Subscriptions** tab and select **Reinitialize Subscription**.



Step 5. Select **Use a new snapshot** and then click **Mark For Reinitialization**.



Reinitialize Subscription(s)



This action marks each subscription to be reinitialized from a snapshot the next time its Distribution Agent runs.

What snapshot should be used to reinitialize the subscription(s)?

Use the current snapshot

Use a new snapshot

Generate the new snapshot now

Mark For Reinitialization

Cancel

Help