

Configure and Manage a Standalone Server from Intersight

Contents

[Introduction](#)

[Prerequisites](#)

[Requirements](#)

[Components Used](#)

[Background Information](#)

[Procedure](#)

Introduction

This document describes how to claim, create and deploy a UCS Server Profile for a standalone Server.

Prerequisites

Requirements

Components Used

This procedure can be done for M5, M6, and M7 series standalone servers.

The information in this document was created from the devices in a specific lab environment. All of the devices used in this document started with a cleared (default) configuration. If your network is live, ensure that you understand the potential impact of any command.

Background Information

This procedure can be done for M5, M6, and M7 series standalone servers.

Procedure

Navigate to the Cisco IMC web page for the device that can be claimed.

Server Properties

Product Name: UCS C220 M6S
Serial Number: WZP24430N7K
PID: UCSC-C220-M6S
UUID: 3ADAE7CA-DEBC-4118-80E9-F5FCA72545E2
BIOS Version: C220M6.4.2.2d.0.0610220138
Description:
Asset Tag:

Cisco Integrated Management Controller (Cisco IMC) Information

Hostname: C220-WZP24430N7K
IP Address: 10.31.123.34
MAC Address: BC:4A:56:59:3D:FC
Firmware Version: 4.2(2a)
Current Time (UTC): Mon Oct 31 23:36:48 2022
Local Time: Mon Oct 31 23:36:48 2022 UTC +0000 (Local)
Timezone: UTC [Select Timezone](#)

Chassis Status

- Power State: ● On
- Post Completion Status: ● Not-Completed
- Overall Server Status: ✘ Severe Fault
- Temperature: ✔ Good
- Overall DIMM Status: ✔ Good
- Power Supplies: ✔ Good
- Fans: ✔ Good
- Locator LED: ● Off
- Overall Storage Status: ✘ Severe Fault

Server Utilization

- Overall Utilization (%): N/A
- CPU Utilization (%): N/A
- Memory Utilization (%): N/A
- IO Utilization (%): N/A

Server Site

Next, navigate to **Admin > Device Connector**.

Cisco Integrated Management Controller

Admin / Device Connector

The Device Connector is an embedded management controller that enables the capabilities of Cisco Intersight, a cloud-based management platform. For detailed information about configuring the device connector, please visit [Help Center](#).

Device Connector

Device Connector

Not Claimed

The connection to the Cisco Intersight Portal is successful, but device is still not claimed. To claim the device open Cisco Intersight, create a new account and follow the guidance or go to the Targets page and click Claim a New Device for existing account.

1.0.11-2316

Device Connector

Verify that the Server can reach Intersight Cloud or the Intersight appliance.

Under **Settings**, modify the **Proxy Configuration** and **Certificate Manager**.

Admin / Device Connector

Refresh | Host Power | Launch vKVM | Ping | CIMC Reboot | Locator LED

The Device Connector is an embedded management controller that enables the capabilities of Cisco Intersight, a cloud-based management platform. For detailed information about configuring the device connector, please visit [Help Center](#).

Device Connector

ACCESS MODE: ALLOW CONTROL

Device Connector — Internet — Intersight

Not Claimed

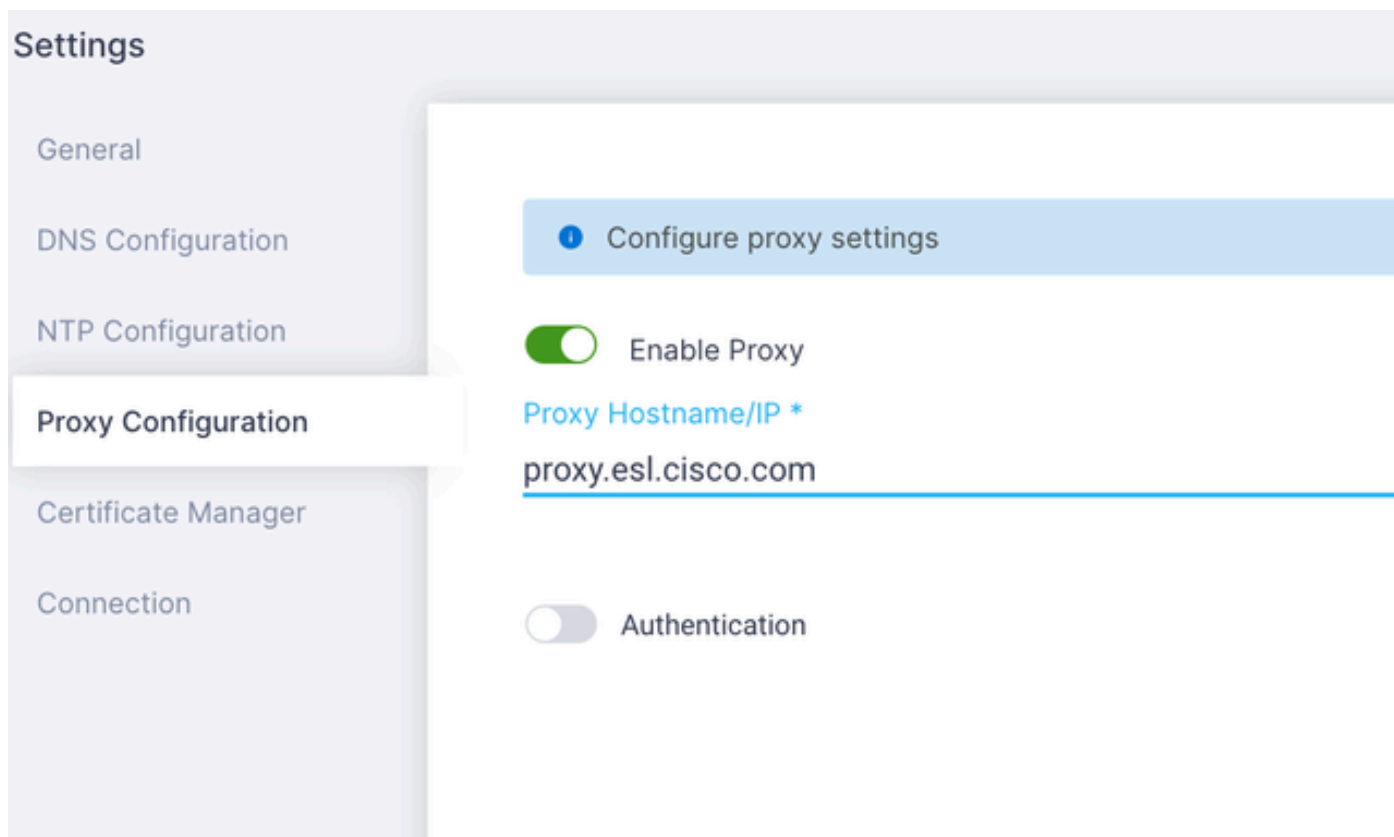
The connection to the Cisco Intersight Portal is successful, but device is still not claimed. To claim the device open Cisco Intersight, create a new account and follow the guidance or go to the Targets page and click Claim a New Device for existing account.

[Settings](#) [Refresh](#)

Device ID: WZP24430N7K

Claim Code: 169464073EA4

1.0.11-2316



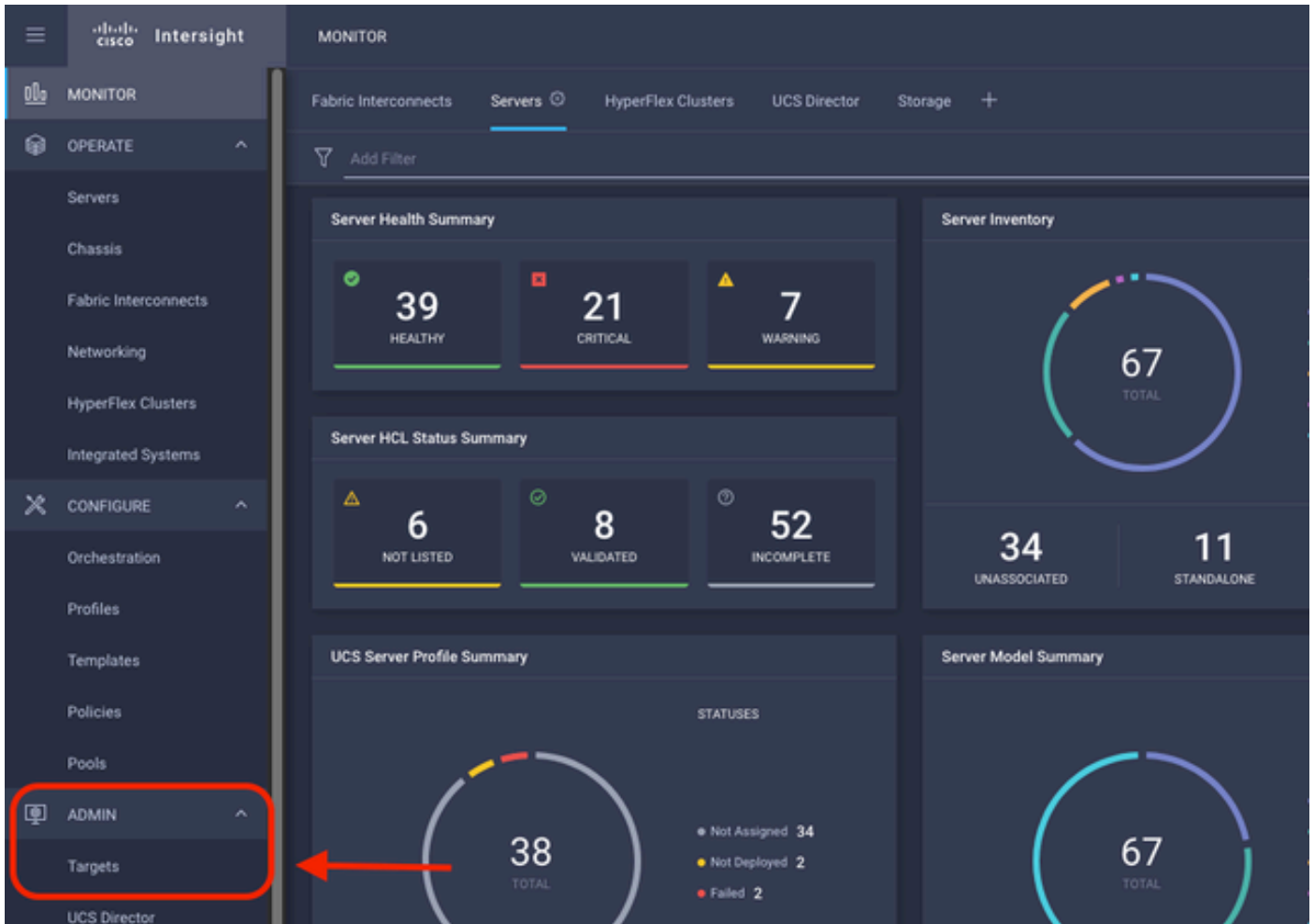
Proxy configuration

Once the connection to the Cisco Intersight Portal is successful, you can claim the device. To do this, copy both the **Device ID** and **Claim Code** and then log into your Intersight Account.

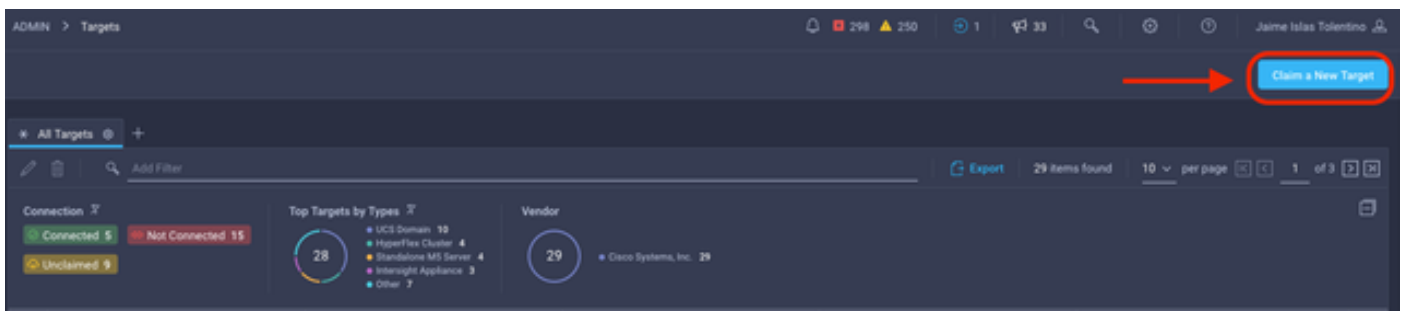


Device ID and Claim Code

At the Intersight Portal, navigate to **Admin > Targets**.

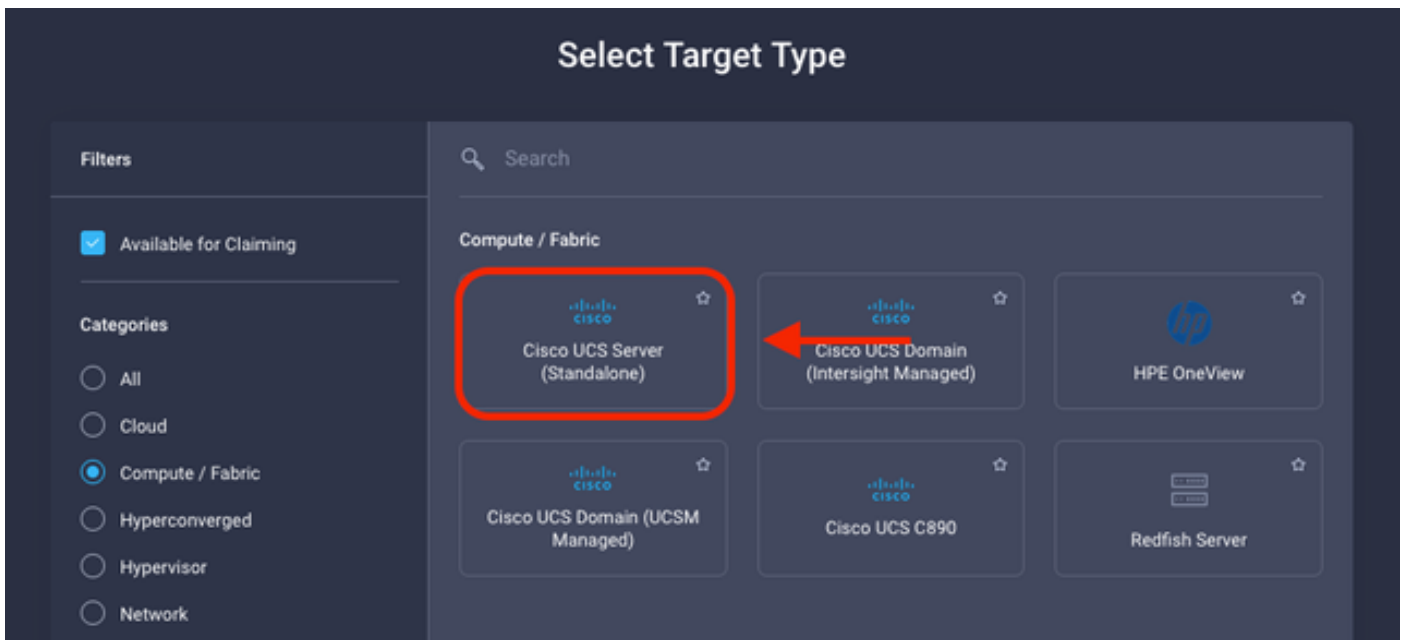


Click **Claim a New Target**.



Claim a New Target

Under **Compute/Fabric**, select **Cisco UCS Server (Standalone)** and click **Start**.



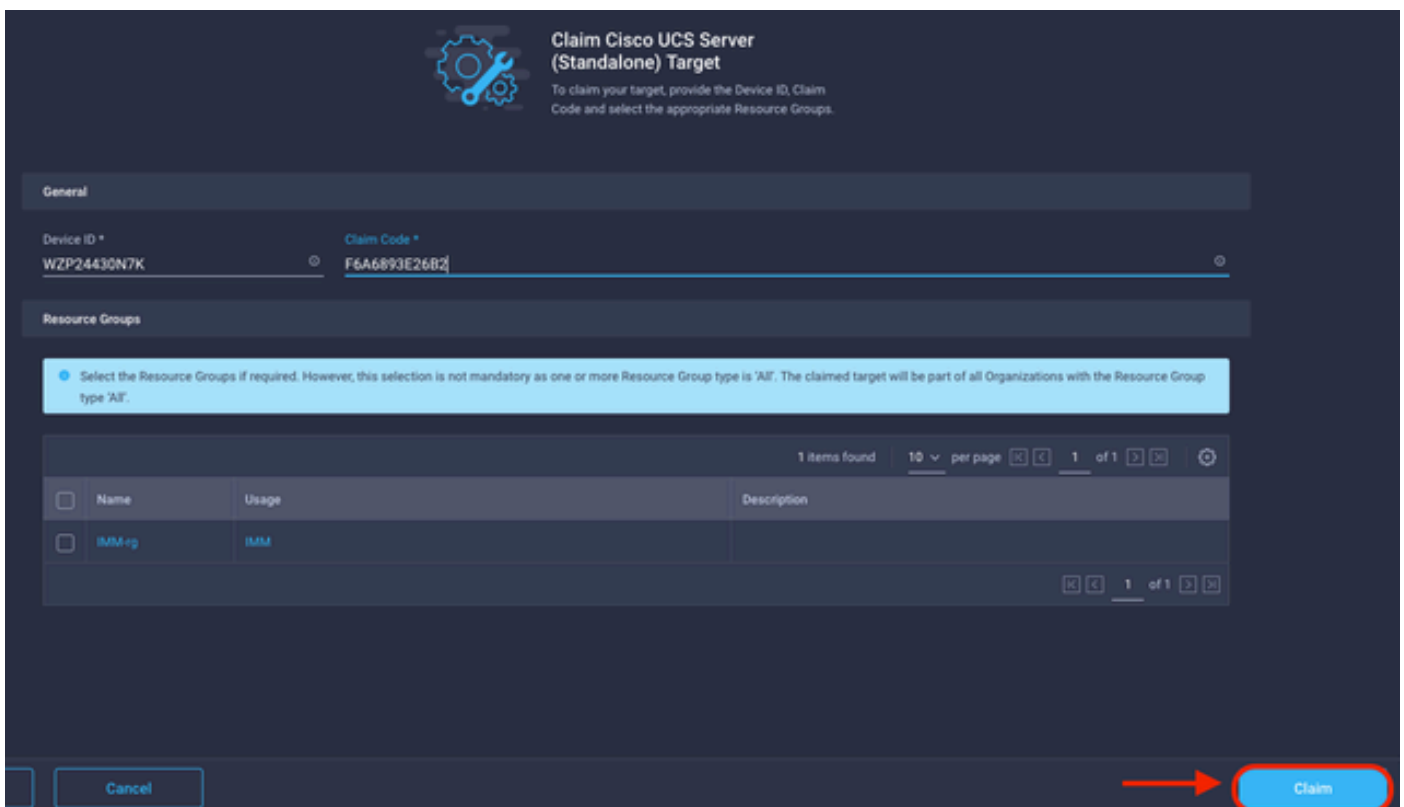
Cisco UCS Server

On the **General** page, paste both the **Device ID** and the **Claim Code**.

If you select the **Resource Group**, you can specify the **Organizations** to add the device to. This is not mandatory.

By default, the **Resource Group** = **All**.

Click **Claim**.



General page

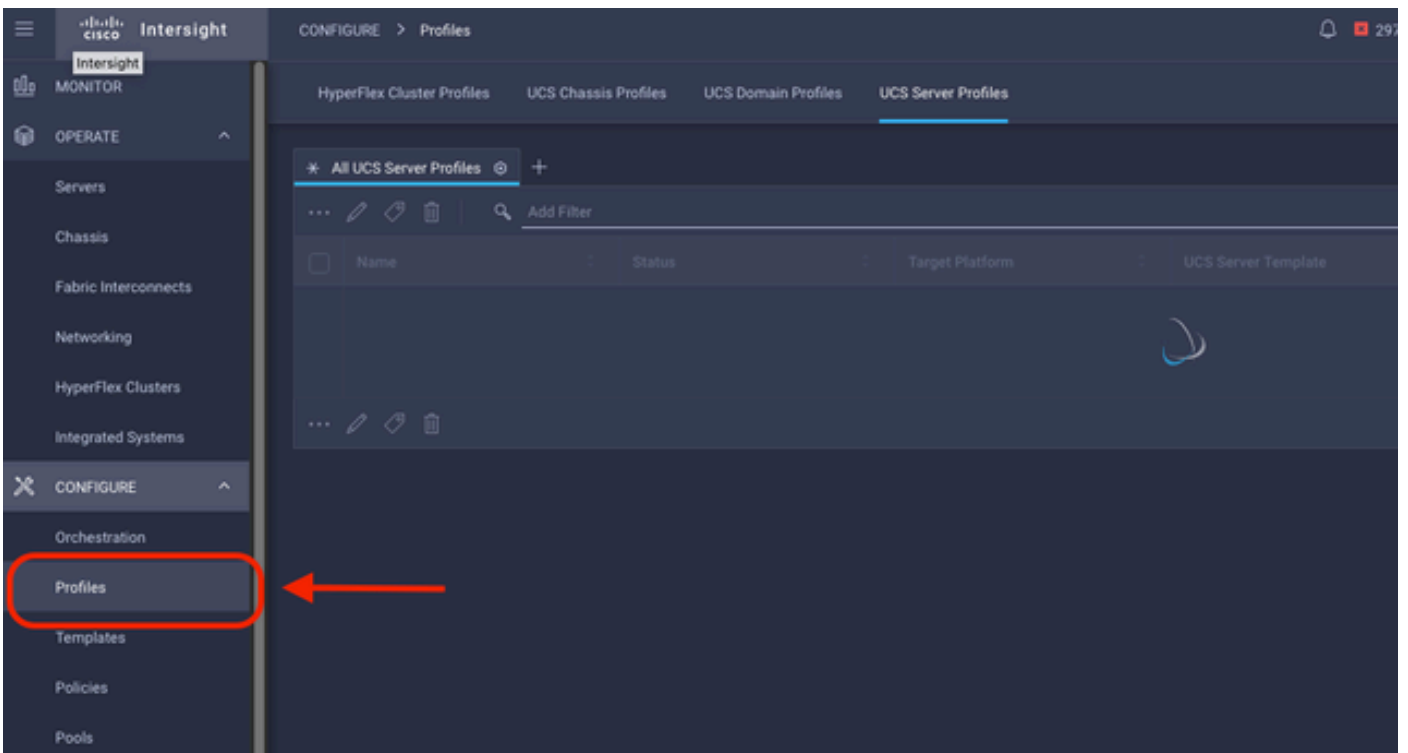
If successful, you can see the device under **Targets**.

Name	Status	Type	Claimed Time	Claimed By
C220-WZP24430N7K	Connected	Standalone M6 Server	a few seconds ago	jslasto@cisco.com

All Targets

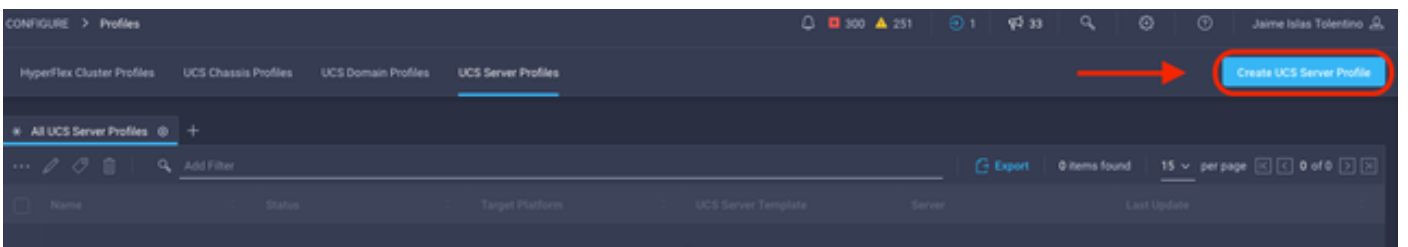
Now that the Server is correctly added to Intersight, you can create a UCS Server Profile.

Click **Configure > Profiles** and then **UCS Server Profiles**.



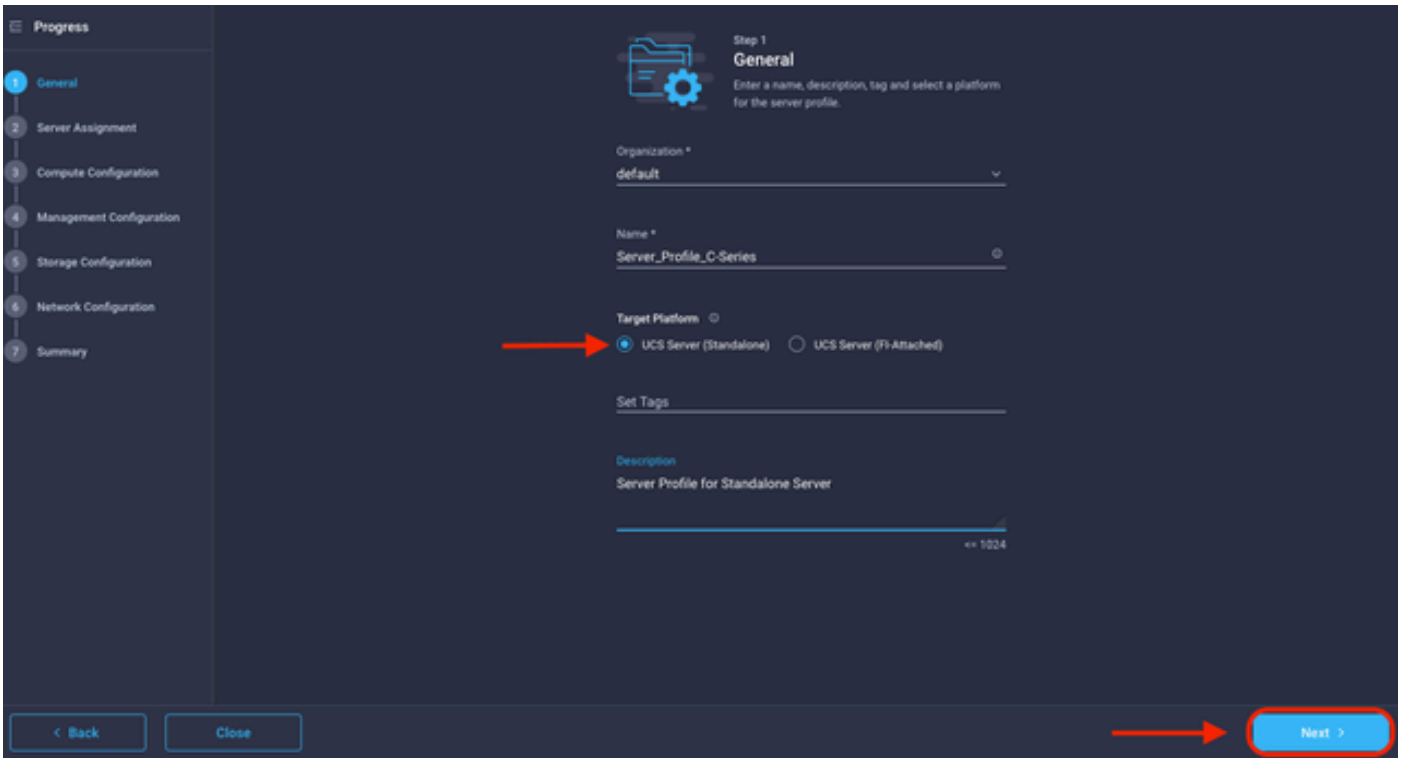
UCS Server Profiles

Click **Create UCS Server Profile**.



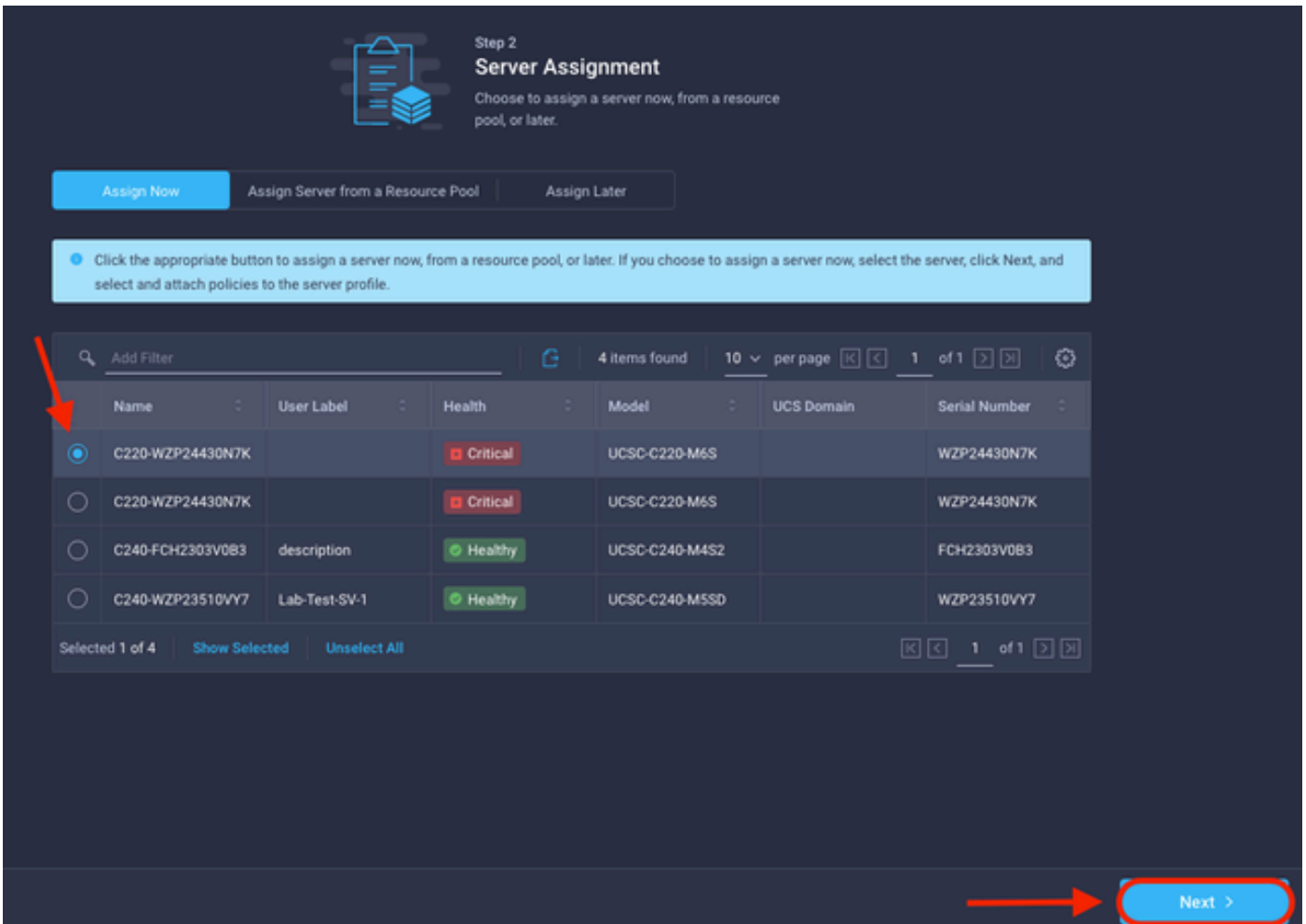
Create UCS Server Profile

Name the **Server Profile** and select **Standalone Server** on **Target Platform**, and then click **Next**.



Standalone Server Assignment

At the **Server Assignment** screen, select the **Standalone Server** and click **Next**.



Server Assignment Screen

In the next five steps, assign the **Server Policies** based on your requirements. Click **Summary** and **Deploy** to finish.

The screenshot shows a configuration wizard at Step 7, Summary. The left sidebar lists steps 1 through 7, with Step 7 highlighted. The main content area shows a 'General' section with the following details:

Property	Value	Property	Value
Organization	default	Status	Not Deployed
Name	Server_Profile_C-Series	Management IP	10.31.123.34
Assigned Server	C220-WZP24430N7K		
Target Platform	UCS Server (Standalone)		

Below this is a 'Description' section: 'Server Profile for Standalone Server'. There are tabs for 'Compute Configuration', 'Management Configuration', 'Storage Configuration', 'Network Configuration', and 'Errors/Warnings (0)'. The 'Compute Configuration' tab is active, showing a 'BIOS' section with a policy named '.27-bios-policy'. At the bottom right, a red arrow points to a 'Deploy' button.

Server Summaries Deploy

Intersight can validate the configuration and, if correct, verify the status.

The screenshot shows a table of UCS Server Profiles. The table has columns for Name, Status, Target Platform, UCS Server Template, Server, and Last Update. The 'Server_Profile_C-Series' row has a status of 'OK', while the 'Standalone_M6_Server' row has a status of 'Not Assigned'.

Name	Status	Target Platform	UCS Server Template	Server	Last Update
Server_Profile_C-Series	OK	UCS Server (Standalone)		C220-WZP24430N7K	a few seconds ago
Standalone_M6_Server	Not Assigned	UCS Server (Standalone)			an hour ago

Final Profiles

You can now manage your UCS Standalone Server from Intersight.