

Measuring Delay, Jitter, and Packet Loss with Cisco IOS SAA and RTTMON

Document ID: 24121

Contents

Introduction

Measuring Delay, Jitter, and Packet Loss for Voice-enabled Data Networks

- The Importance of Measuring Delay, Jitter, and Packet Loss
- Defining Delay, Jitter, and Packet Loss
- SAA and RTTMON

Deploying Delay and Jitter Agent Routers

- Where to Deploy
- Simulating a Voice Call
- Delay and Jitter Probe Deployment Example

Sample Data Collections

- Polling the MIB Tables

Proactive Monitoring of Thresholds

- SAA threshold Command
- RMON Alarm and Event

Appendix

- Jitter Calculations in Cisco SAA Delay Jitter Probes
- Delay and Jitter Probe Router Hardware and Software Configurations

Related Information

Introduction

This document describes methods for measuring delay, jitter, and packet loss on the data network using Cisco IOS® Service Assurance Agent (SAA) and Round Trip Time Monitor (RTTMON) features and Cisco routers.

Measuring Delay, Jitter, and Packet Loss for Voice-enabled Data Networks

The Importance of Measuring Delay, Jitter, and Packet Loss

With the emergence of new applications on data networks, it is becoming increasingly important for customers to accurately predict the impact of new application rollouts. Not long ago, it was easy to allocate bandwidth to applications and let the applications adapt to the exploding nature of traffic flows through timeout and retransmission functions of the upper layer protocols. Now, however, new world applications, such as voice and video, are more susceptible to changes in the transmission characteristics of data networks. It is imperative to understand the traffic characteristics of the network before deployment of new world applications to ensure successful implementations.

Defining Delay, Jitter, and Packet Loss

Voice over IP (VoIP) is susceptible to network behaviors, referred to as delay and jitter, which can degrade the voice application to the point of being unacceptable to the average user. Delay is the time taken from point-to-point in a network. Delay can be measured in either one-way or round-trip delay. One-way delay calculations require expensive sophisticated test gear and are beyond the budget and expertise of most

enterprise customers. However, measuring round-trip delay is easier and requires less expensive equipment. To get a general measurement of one-way delay, measure round-trip delay and divide the result by two. VoIP typically tolerates delays up to 150 ms before the quality of the call is unacceptable.

Jitter is the *variation* in delay over time from point-to-point. If the delay of transmissions varies too widely in a VoIP call, the call quality is greatly degraded. The amount of jitter tolerable on the network is affected by the depth of the jitter buffer on the network equipment in the voice path. The more jitter buffer available, the more the network can reduce the effects of jitter.

Packet loss is losing packets along the data path, which severely degrades the voice application.

Prior to deploying VoIP applications, it is important to assess the delay, jitter, and packet loss on the data network in order to determine if the voice applications work. The delay, jitter, and packet loss measurements can then aid in the correct design and configuration of traffic prioritization, as well as buffering parameters in the data network equipment.

SAA and RTTMON

The SAA and RTTMON MIB are Cisco IOS software features available in versions 12.0 (5)T and higher. These features enable you to test and collect delay, jitter, and packet loss statistics on the data network. Internetwork Performance Monitor (IPM) is a Cisco network management application that can configure the features and monitor the SAA and RTTMON data. The SAA and RTTMON features can be used to measure delay, jitter, and packet loss by deploying small Cisco IOS routers as agents to simulate customer end stations. The routers are referred to as delay and jitter probes. Additionally, the delay and jitter probes can be configured with the remote monitoring (RMON) alarm and event triggers once baseline values have been determined. This allows the delay and jitter probes to monitor the network for predetermined delay and jitter service levels and alert network management system (NMS) stations when a threshold is exceeded.

Deploying Delay and Jitter Agent Routers

Where to Deploy

Delay and jitter can be measured by deploying Cisco routers 17xx or higher with Cisco IOS software code version 12.05T or higher, and configuring the Cisco IOS SAA features. The routers should be placed in the campus networks next to hosts. This provides statistics for end-to-end connections. Since it is not practical to measure every possible voice path in the network, place the probes in typical host locations providing for a statistical sampling of typical voice paths. Some examples include:

- a local campus-to-campus path
- a local campus-to-remote campus path via a 384 kbs Frame Relay circuit
- a local campus-to-remote campus via an ATM permanent virtual circuit (PVC)

In the case of VoIP deployments using traditional phones connected to Cisco routers using Foreign Exchange Station (FXS) ports, use the router connected to the phones to serve as the delay and jitter probes. Once deployed, the probe collects statistics and populates Simple Network Management Protocol (SNMP) MIB tables in the router. The data can then be accessed either through the Cisco IPM application or through SNMP polling tools. Additionally, once baseline values have been established, SAA can be configured to send alerts to an NMS station if thresholds for delay, jitter, and packet loss are exceeded.

Simulating a Voice Call

One of the strengths of using SAA as the testing mechanism is that a voice call can be simulated. For example, imagine you want to simulate a G.711 voice call. You know that it uses RTP/UDP ports 14384 and

above, it is approximately 64 kb/s, and the packet size is 200 bytes {(160 bytes of payload + 40 bytes for IP/UDP/RTP (uncompressed) }. You can simulate that type of traffic by setting up the SAA Delay/Jitter Probe as shown below.

The jitter operation needs to do this:

- Send the request to RTP/UDP port number 14384.
- Send 172 byte packets (160 payload + 12 byte RTP header size) + 28 bytes (IP + UDP).
- Send 3000 packets for each frequency cycle.
- Send every packet 20 milliseconds apart for a duration of 60 seconds and sleep 10 seconds before starting the next frequency cycle.

Those parameters give 64 kb/s for 60 seconds.

- $((3000 \text{ datagrams} * 160 \text{ bytes per datagram}) / 60 \text{ seconds}) * 8 \text{ bits per byte} = 64 \text{ kb/s}$

The configuration on the router appears as follows:

```
rtr 1
type jitter dest-ipaddr 172.18.179.10 dest-port 14384 num-packets 3000+
request-data-size 172*
frequency 70
rtr schedule 1 life 2147483647 start-time now
```

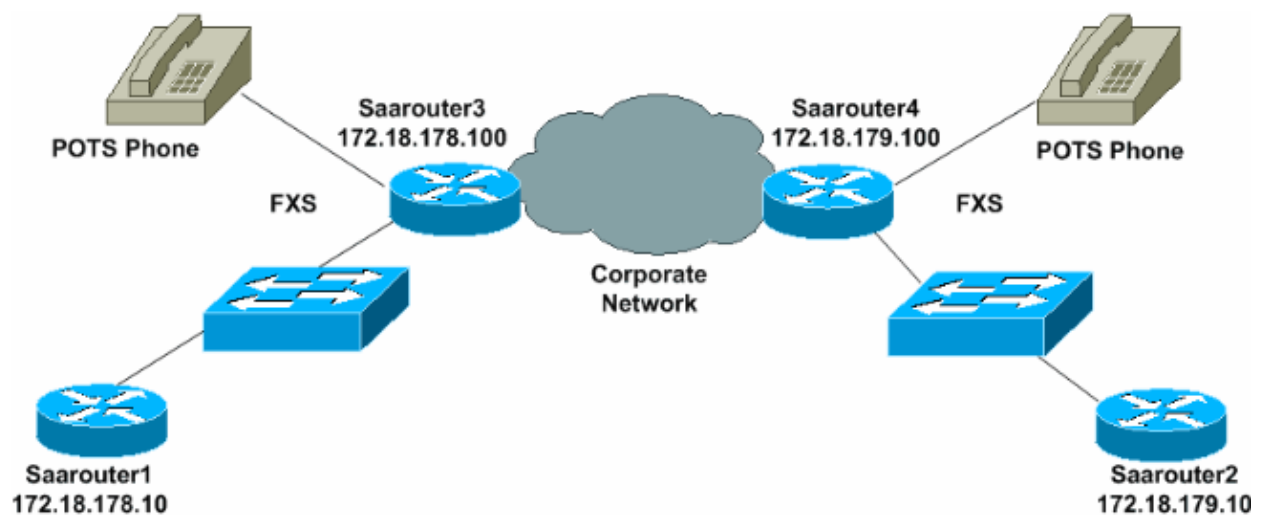
Note: IP+UDP is not considered in the request-data-size as the router adds them automatically to the size internally.

Note: Currently, Cisco IOS only supports 1000 packets per operation. This limit will be raised in a future release.

Delay and Jitter Probe Deployment Example

The routers in the following example simulate 60-second voice calls every 60 seconds and record delay, jitter, and packet loss in both directions.

Note: The delay calculations are round-trip times and must be divided by two to get the one-way delay.



```
saarouter1#
rtr responder
rtr 1
```

```
type jitter dest-ipaddr 172.18.179.10 dest-port 14384 num-packets 1000
request-data-size 492
frequency 60
rtr schedule 1 life 2147483647 start-time now
```

```
saarouter2#
rtr responder
rtr 1
type jitter dest-ipaddr 172.18.178.10 dest-port 14385 num-packets 1000
request-data-size 492
rtr schedule 1 life 2147483647 start-time now
```

```
saarouter3#
rtr responder
rtr 1
type jitter dest-ipaddr 172.18.179.100 dest-port 14385 num-packets 1000
request-data-size 492
frequency 60
rtr schedule 1 life 2147483647 start-time now
```

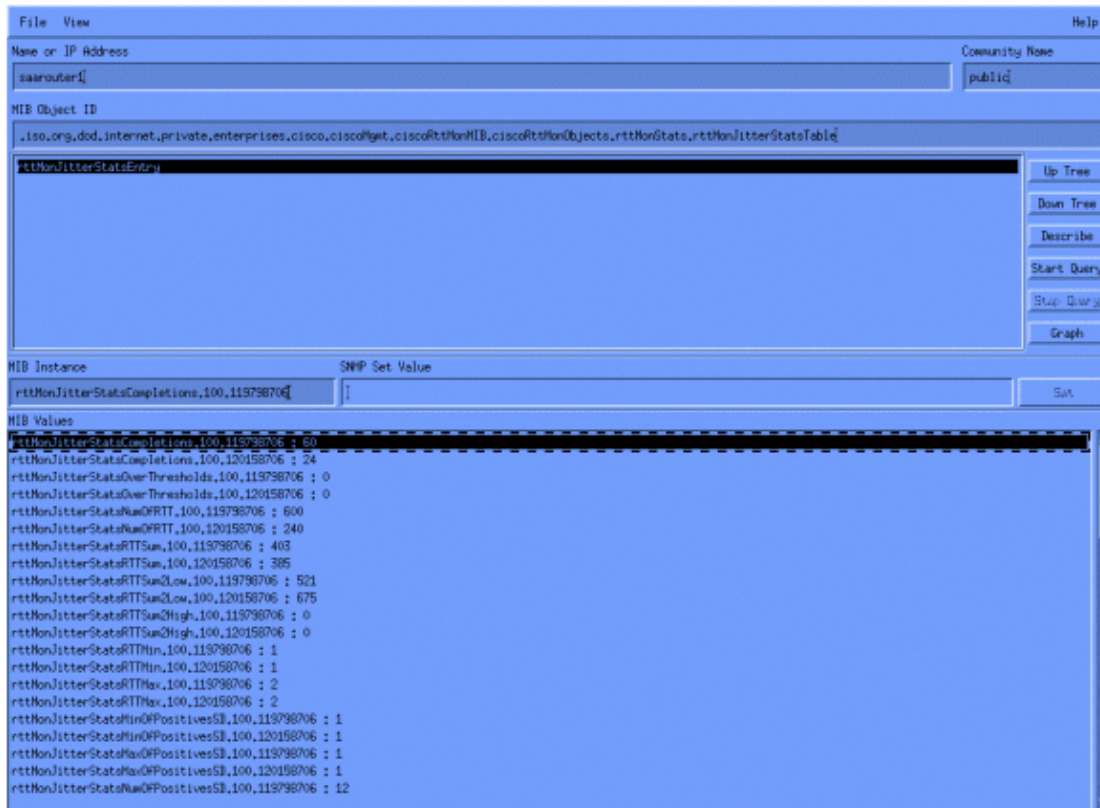
```
saarouter4#
rtr responder
rtr 1
type jitter dest-ipaddr 172.18.178.100 dest-port 14385 num-packets 1000
request-data-size 492
frequency 60
rtr schedule 1 life 2147483647 start-time now
```

Sample Data Collections

Polling the MIB Tables

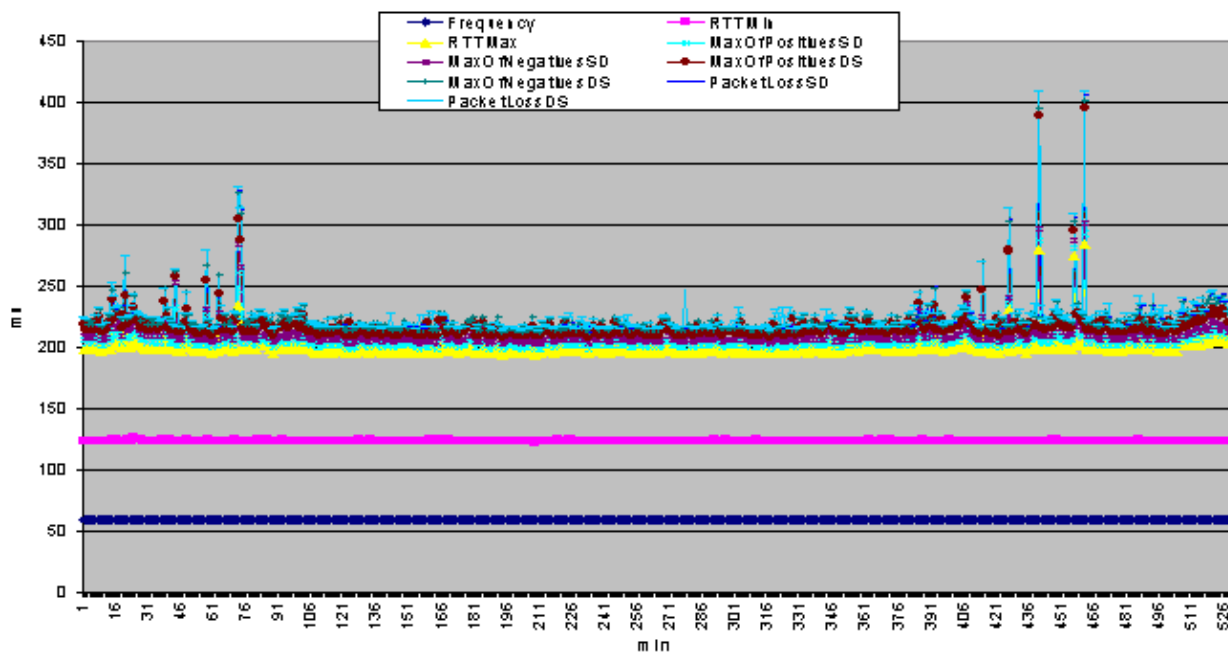
The delay and jitter probes begin collecting data that is subsequently placed in SNMP MIB tables. The `rttMonStats` table provides a one hour average of all the jitter operations for the last hour. The `rttMonLatestJitterOper` table provides the values of the last operation completed. For general statistics on delay and jitter, poll the `rttMonStats` table every hour. For more granular statistics, poll the `rttMonLatestJitterOper` table at a higher frequency level than the jitter operation. For example, if the delay and jitter probe is calculating jitter every five minutes, do not poll the MIB at any interval less than five minutes.

The following screen capture shows data from the `rttMonJitterStatsTable` gathered from an HP OpenView Network Node Manager MIB poll.



SAA Report Example

The following SAA data graph is a compilation of delay, jitter, and packet loss data points over an eight-hour period for one pair of delay and jitter probes.



Command Line Data Examples

The data can also be viewed using the Cisco IOS **show** command at the command line on the delay and jitter probes. A Perl Expect script can be used to gather data from the command line and export it to a text file for later analysis. Additionally, the command line data can also be used for real time monitoring and

troubleshooting of delay, jitter, and packet loss.

The following example shows the command output from the **show rtr collection-stats** command on the saarouter1 router.

```
#show rtr collection-stats 100
```

```
Collected Statistics
```

```
Entry Number: 100
Target Address: 172.16.71.243, Port Number: 16384
Start Time: 13:06:04.000 09:25:00 Tue Mar 21 2000
RTT Values:
NumOfRTT: 600   RTTSum: 873   RTTSum2: 1431
Packet Loss Values:
PacketLossSD: 0 PacketLossDS: 0
PacketOutOfSequence: 0 PacketMIA: 0   PacketLateArrival: 0
InternalError: 0   Busies: 0
Jitter Values:
MinOfPositivesSD: 1   MaxOfPositivesSD: 1
NumOfPositivesSD: 23   SumOfPositivesSD: 23   Sum2PositivesSD: 23
MinOfNegativesSD: 1   MaxOfNegativesSD: 1
NumOfNegativesSD: 1   SumOfNegativesSD: 1   Sum2NegativesSD: 1
MinOfPositivesDS: 1   MaxOfPositivesDS: 1
NumOfPositivesDS: 7   SumOfPositivesDS: 7   Sum2PositivesDS: 7
MinOfNegativesDS: 1   MaxOfNegativesDS: 1
NumOfNegativesDS: 18   SumOfNegativesDS: 18   Sum2NegativesDS: 18
```

```
Entry Number: 100
Target Address: 172.16.71.243, Port Number: 16384
Start Time: 14:06:04.000 09:25:00 Tue Mar 21 2000
RTT Values:
NumOfRTT: 590   RTTSum: 869   RTTSum2: 1497
Packet Loss Values:
PacketLossSD: 0 PacketLossDS: 0
PacketOutOfSequence: 0 PacketMIA: 0   PacketLateArrival: 0
InternalError: 0   Busies: 0
Jitter Values:
MinOfPositivesSD: 1   MaxOfPositivesSD: 1
NumOfPositivesSD: 29   SumOfPositivesSD: 29   Sum2PositivesSD: 29
MinOfNegativesSD: 1   MaxOfNegativesSD: 1
NumOfNegativesSD: 7   SumOfNegativesSD: 7   Sum2NegativesSD: 7
MinOfPositivesDS: 1   MaxOfPositivesDS: 1
NumOfPositivesDS: 47   SumOfPositivesDS: 47   Sum2PositivesDS: 47
MinOfNegativesDS: 1   MaxOfNegativesDS: 1
NumOfNegativesDS: 5   SumOfNegativesDS: 5   Sum2NegativesDS: 5
```

Proactive Monitoring of Thresholds

There are several ways to monitor the delay, jitter, and packet loss levels in the network once baseline values have been established through the initial data collection. One way is to use the SAA **threshold** command. Another is to use a feature in the Cisco IOS mainline code called RMON Alarm and Event.

SAA threshold Command

The SAA feature set **threshold** command sets the rising threshold (hysteresis) that generates a reaction event and stores history information for the operation. The following SAA threshold configuration on the delay and jitter probe enables the monitoring of jitter and creates an SNMP trap upon the violation of a 5 ms threshold.

```
saarouter1#
rtr 100
```

```
rtr reaction-configuration 100 threshold-falling 5 threshold-type immediate
```

RMON Alarm and Event

The delay and jitter probes monitor predetermined thresholds using either the SAA Cisco IOS features, or the Cisco IOS RMON alarm and event method. In either case, the router monitors delay, jitter, and packet loss and alerts NMS stations of threshold violations via SNMP traps.

The following RMON alarm and event trap configuration causes saarouter1 to generate an SNMP trap if the rising threshold exceeds 140 ms maximum round-trip time. It also sends another trap when the maximum round-trip time falls back below 100 ms. The trap is then sent to the log on the router, as well as to the NMS station 172.16.71.19.

```
saarouter1#  
rmon alarm 10 rttMonJitterStatsRTTMax.100.120518706 1 absolute rising-threshold 140 100 fa  
rmon event 100 log trap private description max_rtt_exceeded owner jharp  
rmon event 101 log trap private description rtt_max_threshold_reset owner jharp
```

Appendix

Jitter Calculations in Cisco SAA Delay Jitter Probes

Jitter is the variance in one-way latency and is calculated based on sending and receiving time stamps of consecutive packets sent out.

Time Stamp	Sender	Responder
T1	send pkt1	
T2		recv pkt1
T3		send back reply for pkt1
T4	recv reply for pkt1	
T5	send pkt2	
T6		recv pkt2
T7		send back reply for pkt2
T8	recv reply for pkt2	

For packet 1 and packet 2 above, use the following source and destination calculations.

- Jitter from source to destination (JitterSD) = (T6-T2) - (T5-T1)
- Jitter from destination to source (JitterDS) = (T8-T4) - (T7-T3)

Jitter is calculated using time stamps of every two consecutive packets. For example:

```
Router1 send packet1 T1 = 0  
Router2 receives packet1 T2 = 20 ms  
Router2 sends back packet1 T3 = 40 ms  
Router1 receives packet1 response T4 = 60 ms  
Router1 sends packet2 T5 = 60 ms  
Router2 receives packet2 T6 = 82 ms  
Router2 sends back packet2 T7 = 104 ms  
Router1 receives packet2 response T8 = 126 ms
```

Jitter from source to destination (JitterSD) = (T6-T2) - (T5-T1)
Jitter from source to destination (JitterSD) = (82 ms - 20 ms) - (60 ms - 0 ms) = 2 ms pos

Jitter from destination to source (JitterDS) = (T8-T4) - (T7-T3)
Jitter from destination to source (JitterDS) = (126 ms - 60 ms) - (104 ms - 40 ms) = 2 ms pos

Delay and Jitter Probe Router Hardware and Software Configurations

- **CISCO1720;0/100BaseT** Modular Router with two WAN slots and Cisco IOS IP Software
- **MEM1700-16U24D** Cisco 1700 16 MB to 24 MB DRAM Factory Upgrade
- **MEM1700-4U8MFC** Cisco 1700 4 MB to 8 MB Mini-Flash Card Factory Upgrade
- **CAB-AC** Power Cord, 110V
- **S17CP-12.1.1T** Cisco 1700 IOS IP PLUS

Related Information

- [SAA User Guide](#)
 - [Technical Support – Cisco Systems](#)
-

[Contacts & Feedback](#) | [Help](#) | [Site Map](#)

© 2014 – 2015 Cisco Systems, Inc. All rights reserved. [Terms & Conditions](#) | [Privacy Statement](#) | [Cookie Policy](#) | [Trademarks of Cisco Systems, Inc.](#)

Updated: Oct 25, 2005

Document ID: 24121
