



## Data Sheet

# Cisco Catalyst 6500 Series Wireless LAN Services Module

## PRODUCT OVERVIEW

The Wireless LAN Services Module (WLSM) for the Cisco® Catalyst® 6500 Series of multilayer switches enables scalable wireless LAN network deployments. The Cisco Catalyst 6500 Series WLSM is ideal for enterprises, midsize businesses, universities, and service providers that have deployed [Cisco Aironet®](#) autonomous access points. The Cisco Catalyst 6500 Series WLSM:

- Uses existing network infrastructure investments that do not force changes to the underlying wireline infrastructure and do not require special client devices
- Enables secure campus-wide Layer 3 roaming
- Supports up to 6000 wireless LAN users and 600 Cisco Aironet Series autonomous access points spread throughout the campus using a single Cisco Catalyst 6500 Series WLSM deployed in a Cisco Catalyst 6500 Series chassis located anywhere in the network
- Allows network managers to segment and individually authenticate, control access to, and manage disparate wireless user groups such as “guest” and “employee” by enabling wireless mobility groups
- Simplifies management and deployment of wireless networks by unifying wireless and wireline networks, providing consistent application of policies for all wireless traffic via a single point of ingress and providing “out-of-box” access point configuration
- Extends Cisco Catalyst 6500 Series rich intelligent network services to the wireless edge, including enterprise-class security (denial of service [DoS] prevention access control lists [ACLs], firewall, intrusion detection, and IP Security [IPSec] VPN), high availability (Layer 2 and Layer 3 nonstop forwarding [NSF] with stateful switchover [SSO] of the control and data planes in a supervisor failover, and Cisco EtherChannel®), and quality of service (QoS) mechanisms

**Note:** The Cisco Catalyst 6500 Series WLSM supports autonomous access point deployments. Cisco IOS Software releases in the 12.2.SX series for Cisco Catalyst 6500 Series switches are the last software releases to support the Cisco Catalyst 6500 Series WLSM. Customers are encouraged to migrate to the Cisco Catalyst 6500 Series Wireless Services Module (WiSM) and transition to Cisco lightweight access points and the [Cisco Unified Wireless Network](#). The Cisco Catalyst 6500 Series WiSM is a key component of the Cisco Unified Wireless Network and a member of the Cisco Wireless LAN Controller family. The Cisco Catalyst 6500 Series WiSM works in conjunction with Cisco Aironet lightweight access points, the Cisco Wireless Control System (WCS) and the Cisco Wireless Location Appliance to support mission-critical wireless data, voice, and video applications. Learn more about the Cisco Catalyst 6500 Series WiSM visit <http://www.cisco.com/go/wism>.

**Figure 1.** Cisco Catalyst 6500 Series WLSM



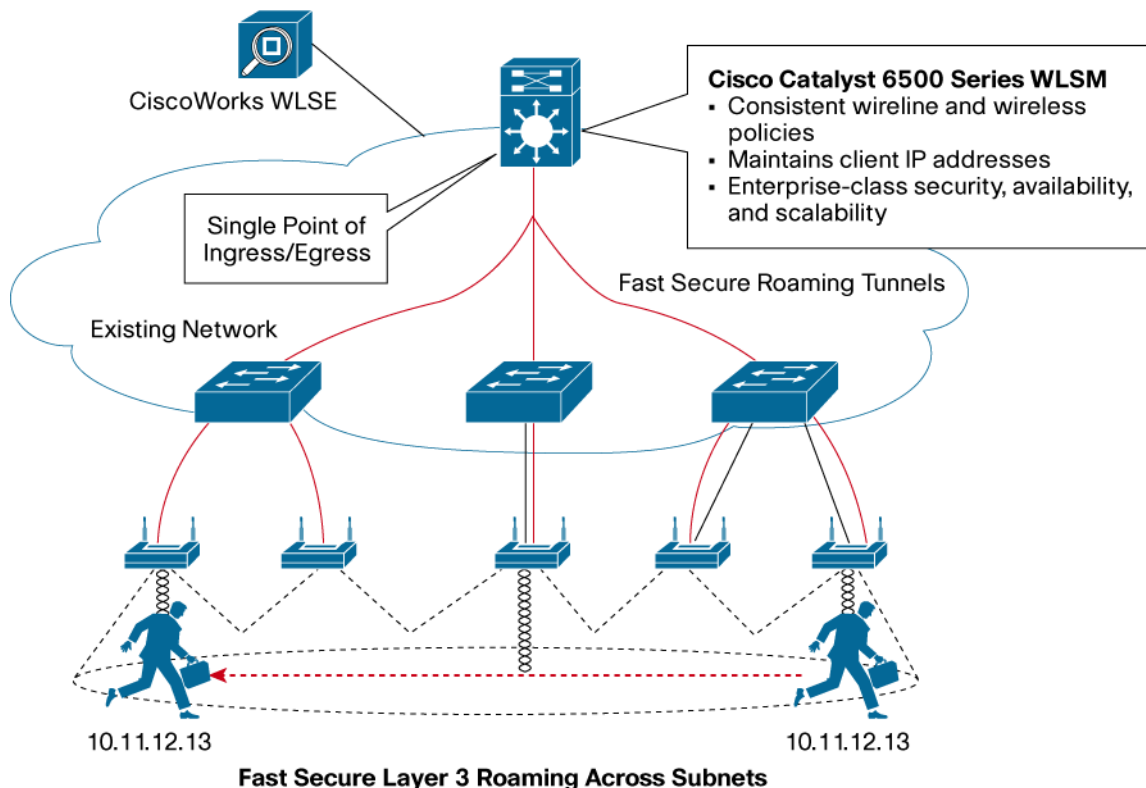
The Cisco Catalyst 6500 Series WLSM (Figure 1) can be configured in any open slot of a 3-, 6-, 9-, or 13-slot Cisco Catalyst 6500 Series switch equipped with a Supervisor Engine 720. The Cisco Catalyst 6500 Series WLSM works with Cisco Aironet autonomous access points and the CiscoWorks Wireless LAN Solution Engine (WLSE). All industry standards-based IEEE 802.11 a, b and g client devices are supported. Additionally, a broad-range of [Cisco Compatible Extensions](#) wireless devices offered by leading PC, network interface card (NIC), and wireless handheld device vendors provides even greater usability and wireless network optimization that is transparent to the user (if desired).

## APPLICATIONS AND DEPLOYMENT SCENARIOS

### Enterprise Campus Environment

The Cisco Catalyst 6500 Series WLSM can be flexibly deployed anywhere in the network—from the wiring closet to the core, to the data center to the WAN edge, or as a services switch. Figure 2 illustrates how the Cisco Catalyst 6500 Series WLSM can be deployed in an enterprise campus environment.

**Figure 2.** Cisco Catalyst 6500 Series WLSM Enterprise Campus Deployment



In this example, the Cisco Catalyst 6500 Series WLSM can be deployed in the distribution layer or the data center; it does not have to be deployed in the wiring closet. An autonomous access point can connect to any switch port on any subnet. Upstream switches or routers do not have to be configured, and no specific VLAN assignment or trunks are required. Prior to actively passing traffic, the autonomous access point can be authenticated as a trusted network device. Once the autonomous access point is registered and has received its configuration from the CiscoWorks WLSE, fast secure roaming tunnels (FSRTs) are established between the autonomous access point and the Cisco Catalyst 6500 Series WLSM-equipped Cisco Catalyst 6500 Series switch. An FSRT is established for each service set identifier (SSID) of a given autonomous access point.

Using this configuration, wireless LAN users are provided with fast secure roaming, both within and between subnets. No special client software is required, which gives network administrators maximum flexibility on network access policies. Clients can be authenticated and placed in mobility groups prior to accessing network resources. Wireless LAN client handoff between autonomous access points, including IEEE 802.1X reauthentication and rekeying (if used), occurs in less than 50 ms—well below the ability of a user to detect a disruption on a voice call. The Cisco Catalyst 6500 Series WLSM preserves the client IP address regardless of the access point association; any established VPNs or open connections continue to function, even through a roam.

## FEATURES AND BENEFITS

### Fast Secure Campus-Wide Mobility

Network administrators can provide campus-wide fast secure roaming services to wireless users without sacrificing security, implementing campus-spanning VLANs, or modifying client software or hardware. The Cisco Catalyst 6500 Series WLSM delivers a secure Layer 3 mobility system with autonomous access point handoff times as low as 50 ms, based upon the selected deployment scenario and the IEEE 802.1X authentication type. Cisco Catalyst 6500 Series WLSM fast secure roaming characteristics and benefits include:

- Dynamic configuration of FSRTs to facilitate campus-wide mobility on a per-mobility-group basis, from each access point to the Cisco Catalyst 6500 Series switch equipped with the Cisco Catalyst 6500 Series WLSM
- No data traffic allowed beyond the access point and into the FSRT until client IEEE 802.1X authentication is successfully completed
- Support for latency-sensitive applications such as voice over IP (VoIP), video streaming, VPN over wireless, and client/server-based applications
- Checking secure authentication credentials every time a client roams, while maintaining 50-ms handoff times
- Support for multicast and broadcast applications
- Support for Wireless Fidelity (Wi-Fi) certified client devices, Cisco Aironet Series WLAN client adapters, and Cisco Compatible client devices

Enterprise-Class Wire-Rate Intelligent Network Services

As an integrated part of the widely deployed Cisco Catalyst 6500 Series switch, the Cisco Catalyst 6500 Series WLSM uses the full range of Cisco Catalyst 6500 Series hardware- and software-based intelligent switching services. These services can be applied on a per-mobility-group basis using the same management interface that is used for all other traffic. Important Cisco Catalyst 6500 Series network services that are immediately available to wireless traffic include, but are not limited to:

- Full range of ACLs for traffic inspection, filtering, and rate limiting based on Layers 2 through 4 header information
- Hardware-based denial of service (DoS) protection mechanisms such as control plane rate limiters and Unicast Reverse Path Forwarding (uRPF)
- RADIUS-based mobility assignment for administrators looking to support a single SSID with the capability for a centralized RADIUS server to determine network connectivity based on authentication
- QoS preservation and policy enforcement of wireless traffic from the access points through the FSRTs to the Cisco Catalyst 6500 Series switch equipped with a Cisco Catalyst 6500 Series WLSM
- IEEE 802.1X and authentication, authorization, and accounting (AAA) services
- Interoperability with integrated Cisco services modules such as the Firewall Services Module (FWSM), Intrusion Detection Services Module (IDSM), Network Analysis Module (NAM), and IPSec VPN Services Module (VPNSM), which can be applied on a per-mobility-group basis (Figure 3)

**Note:** The multigigabit FWSM capabilities far exceed extended ACL functions that are sometimes described as “firewall” features.

Additional Cisco Catalyst 6500 Series features that enhance wireless network deployments include:

- An integrated Time Domain Reflectometer (TDR) for simplified cable fault troubleshooting of any directly connected autonomous access points—supported by any Cisco Catalyst 6500 Series chassis equipped with a 48-port 10/100/1000-Mbps Ethernet interface module
- Field-upgradeable IEEE 802.3af power over Ethernet daughter cards can power access points, IP phones, and other directly connected devices—supported on various Cisco Catalyst 6500 Series 48-port 10/100 and 10/100/1000-Mbps Ethernet interface modules

For a complete list of the Cisco Catalyst 6500 Series switching capabilities, visit:

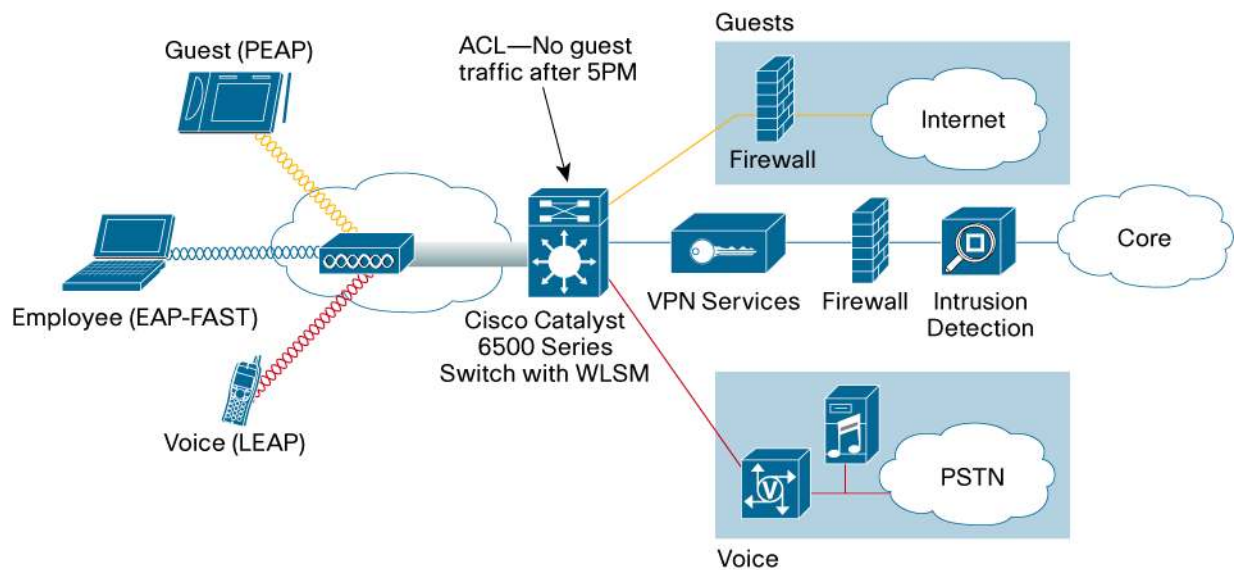
<http://www.cisco.com/en/US/products/hw/switches/ps708/index.html>

## Up to 240 Mobility Groups for Traffic Segmentation and Policy Enforcement

Network managers can segment wireless users into one of up to 240 logical mobility groups across all autonomous access points without configuring VLANs on the underlying network infrastructure. Cisco Catalyst 6500 Series WLSM mobility characteristics and benefits include:

- A single Cisco Catalyst 6500 Series management interface per mobility group that supports all direct or network-attached autonomous access points, automatically applying all defined configurations and policies to the roaming user
- Flexibility to define IEEE 802.1X authentication types on a per-mobility-group basis
- Each mobility group can be assigned its own policies and services, including direction to and through IPSec VPN, firewall, intrusion detection and network analysis modules for services chaining

**Figure 3.** Application of Cisco Catalyst 6500 Series WLSM Services to Wireless Traffic



As shown in Figure 3, wireless LAN traffic is segmented and tunneled on a per-mobility-group basis using separate FSRTs from the access point to a unique interface on the Cisco Catalyst 6500 Series switch. This allows for the application of distinct network admission control and bandwidth management policies to each group as it enters or leaves the wireless network. Intelligent switching services such as time of day ACLs and QoS policies can be individually applied to each mobility group (for example, a guest mobility group, a voice mobility group, or an employee mobility group).

## Simplified Deployment and Management

By unifying wireless and wireline capabilities, initial deployment and ongoing network management activities are greatly simplified. Network managers can use the existing infrastructure and management tools, simplifying initial and ongoing management activities. Cisco Catalyst 6500 Series WLSM deployment and management benefits include:

- Dynamically established FSRTs
- A single point of ingress and management for each mobility group to greatly simplify the application of wireless services and policies to each mobility group, independent of the number of autonomous access points
- Separate data and control planes for deterministic, predictable performance
- Common command line interface (CLI) and management tools across the wireless and wireline infrastructure
- Switched Port Analyzer (SPAN) and Remote SPAN (RSPAN) capabilities to allow remote monitoring of traffic and troubleshooting

- Maximum flexibility to deploy anywhere in the network (the wiring closet, the core, the data center) based upon customer business requirements
- Noninvasive monitoring of wireless traffic with full protocol decoding on a real-time and historical basis, allowing for the validation of QoS policies, as well as the identification of application response delays when used with the optional Cisco Catalyst 6500 Series Network Analysis Module

### **Maximum Network Uptime**

Cisco Catalyst 6500 Series switches are deployed in many networks requiring the highest levels of availability and reliability. By integrating the Cisco Catalyst 6500 Series WLSM into the Cisco Catalyst 6500 Series, the Cisco Catalyst 6500 Series' rich set of high-availability and network resiliency features can be extended to wireless users. These capabilities are complemented by additional high-availability and resiliency features maximizing wireless and wireline network uptime in a systemic approach. As a result, mission-critical applications such as IP telephony and other latency-sensitive, connection-oriented applications can be made available to wireless client devices. The following features highlight some of the enterprise-class high-availability and resiliency capabilities that the Cisco Catalyst 6500 Series WLSM, within the Cisco Catalyst 6500 Series switch, supports in a unified wireless and wireline network.

- Critical baseline features such as Per-VLAN Spanning Tree (PVST), Cisco EtherChannel, IEEE 802.1w Rapid Spanning Tree (RST), and redundant system components enhance overall network uptime, reducing the time required for network topology convergence.
- Fast stateful Layer 2 and Layer 3 control and data plane failover of redundant Cisco Catalyst 6500 Series supervisor engines help to ensure that wireless traffic will continue to be forwarded across the network with no loss of connectivity for wireless users. Cisco Catalyst 6500 Series NSF with Stateful Switchover (NSF/SSO) features prevent faults from being propagated to adjacent network devices. As a result, there are no route flaps or spanning tree reconvergence issues.
- Hot Standby Router Protocol (HSRP) failover protects Cisco Catalyst 6500 Series WLSMs to help ensure rapid service restoration for wireless users.
- Interoperability with the CiscoWorks WLSE and Cisco Aironet Series autonomous access points to support features such as self-healing WLANs and assisted site surveys, helping to ensure that optimal wireless coverage is provided across the campus.
- Graceful tunnel resiliency for maintaining network connectivity for existing wireless clients during a WLSM failure.
- Active and standby WLSM in a Catalyst 6500 chassis providing failover capabilities within a single chassis.

### **Wireless and Wireline Integration**

The Cisco Catalyst 6500 Series WLSM integrates wireless and wireline networks to deliver superior security, management, and mobility. Benefits and highlights of this solution include:

- Extends traditional wireline policies to wireless traffic, enabling unified management
- Separates control and data planes, ensuring scalable, predictable performance across an entire campus
- No changes to the underlying network infrastructure. Uses existing switches, routers, and Cisco Aironet autonomous access points that are already deployed in the network
- No configuration changes to wireless LAN clients
- Delivering Layer 2 and Layer 3 roaming services to the end user that is both fast and secure
- Active participation of multiple network elements (clients, access points, management tools, and network infrastructure platforms) maximize the power of the network as a system, rather than as a point product with limited efficacy

The Cisco Catalyst 6500 Series WLSM is an advanced services module for the Cisco Catalyst 6500 Series switch. It incorporates Wireless Domain Services (WDS) for the enterprise and performs the following important functions:

- Aggregation of access point radio management information for delivery to the CiscoWorks WLSE
- Cisco Centralized Key Management to help ensure security of client roams
- Authentication of Cisco Aironet autonomous access points into the network infrastructure
- Layers 2 and 3 roaming and client mobility management

The Cisco Catalyst 6500 Series WLSM is not in the forwarding path for wireless data traffic. The 8-Gbps (Full Duplex) switch fabric connection is specifically reserved for aggregated access point radio management information, as well as mobility-related protocols and client IEEE 802.1X authentication traffic.

The Cisco Catalyst 6500 Supervisor Engine 720 is responsible for all forwarding decisions for both wireless and wireline traffic. It supports hardware-accelerated FSRT encapsulation and data plane forwarding. ACLs, rate limiters, QoS, and other services are applied to wireless traffic on the Supervisor Engine 720, helping to ensure common configuration and behavior across the wireless and wireline networks.

## SUMMARY

The Cisco Catalyst 6500 Series Switch equipped with the Cisco Catalyst 6500 Series WLSM delivers an enterprise-class wireless/wireline network system for autonomous access points. This solution extends the Cisco Catalyst 6500 Series' rich set of intelligent network services such as security, QoS, and reliability features that users expect in their wireless networks to the wired network. By integrating the Cisco Catalyst 6500 Series WLSM into a Cisco Catalyst 6500 series chassis, the Cisco Catalyst 6500 Series WLSM offers the scalability required to support hundreds of autonomous access points and thousands of users.

## PRODUCT SPECIFICATIONS

Tables 1 and 2 provide product specifications for the Cisco Catalyst 6500 Series WLSM.

**Table 1.** Performance, Scalability, and Protocol Support

Feature	Description
<b>Number of Access Points Supported</b>	Up to 600 Cisco Aironet Series autonomous access points
<b>Number of Wireless Clients Supported</b>	Up to 6000 Cisco Aironet WLAN client adapters, Cisco Compatible client devices, or Wi-Fi certified client devices
<b>Performance</b>	Up to 10 mpps for wireless traffic in hardware (centralized forwarding mode)
<b>Layer 3 Roam Times</b>	As low as 50 ms, depending upon authentication type, client, and network topology
<b>IEEE 802.1X Authentication Types Supported</b>	Cisco LEAP, Protected EAP (PEAP), EAP-Flexible Authentication via Secure Tunneling (EAP-FAST), EAP Tunneled Transport Layer Security (EAP-TTLS) and EAP-Transport Layer Security (EAP-TLS)
<b>Security</b>	Network Admission Control (NAC) Layer 2 support; WPA; WPA2
<b>Protocols Supported</b>	IPv4, IPSec, IP Broadcast, and IP Multicast

**Table 2.** Physical Characteristics and Certifications

Feature	Description
Physical Dimensions (H x W x D)	1.6 x 15.3 x 16.3 in. (4.0 x 37.9 x 40.3 cm)
Power	123.48W AC, 527.11 BTU
Environmental Operating Conditions	<ul style="list-style-type: none"> <li>Operating temperature: 32 to 104°F (0 to 40°C)</li> <li>Storage temperature: -40 to 167°F (-40 to 75°C)</li> <li>Relative humidity: 10 to 90 percent, noncondensing</li> </ul>
Certifications	<ul style="list-style-type: none"> <li>UL 1950</li> <li>EN 60950</li> <li>CSA-0C22.2 No. 950</li> <li>IEC 950</li> <li>FCC 15J Class A (FCC Part 15 [CFR 47] Class A)</li> <li>ICES-003 Class A</li> <li>VCCI CE II (VCCI Class A)</li> <li>CE mark</li> <li>EN 55022 Class B (EN 55022 Class A)</li> <li>CISPR 22 Class B (CISPR 22 Class A)</li> <li>EN 55024</li> </ul>

## SYSTEM REQUIREMENTS

Tables 3 lists the hardware components interoperable with the Cisco Catalyst 6500 Series WLSM.

**Table 3.** Hardware Components Interoperable with the Cisco Catalyst 6500 Series WLSM

Part Number	Product Description	Minimum Software Required
<b>WS-SUP720</b>	Cisco Catalyst 6500 Series Supervisor Engine 720 (required for switches equipped with the Cisco Catalyst 6500 Series WLSM)	Cisco IOS Software Release 12.2(18)SXD
<b>AIR-BR1310G</b>	Cisco Aironet 1300 Series outdoor access point/bridge (Supported in access point mode only)	Cisco IOS Software Release 12.3(4)JA or later
<b>AIR-AP1242AG</b>	Cisco Aironet 1240AG Series access point	Cisco IOS Software Release 12.3.(7)JA or later
<b>AIR-AP1232AG</b>	Cisco Aironet 1230AG Series access point	Cisco IOS Software Release 12.3.(2)JA or later
<b>AIR-AP1210, AIR-AP1230A, AIR-AP1230B, or AIR-AP1231G</b>	Cisco Aironet 1200 Series access point	Cisco IOS Software Release 12.2.(15)XR or later
<b>AIR-AP1131AG</b>	Cisco Aironet 1130AG Series access point	Cisco IOS Software Release 12.3.(2)JA or later
<b>AIR-AP1121B or AIR-AP1121G</b>	Cisco Aironet 1100 Series access point	Cisco IOS Software Release 12.2.(15)XR or later
<b>CWWLSE-1130-19-K9</b>	CiscoWorks WLSE (optional)	CiscoWorks WLSE Version 2.7 or later



## ORDERING INFORMATION

Table 4 provides ordering information for the Cisco Catalyst 6500 Series WLSM. To place an order, visit the [Cisco Ordering](#) Website.

**Table 4.** Ordering Information for the Cisco Catalyst 6500 Series WLSM

Part Number	Product Description	Minimum Software Required
WS-SVC-WLAN-1-K9	Cisco Catalyst 6500 Series WLSM	Cisco CAT6000-WLSM Software Release 1.1.2. or later*

\* Cisco IOS Software releases 12.2.SX for Cisco Catalyst 6500 Series switches are the last software releases to support the Cisco Catalyst 6500 Series WLSM.

## SERVICE AND SUPPORT

Cisco offers numerous innovative services programs to accelerate customer success. These programs are delivered through a unique combination of people, processes, tools, and partners, resulting in high levels of customer satisfaction. Cisco services help you to protect your network investment, optimize network operations, and prepare your network for new applications to extend network intelligence and the power of your business. For more information about Cisco services, see [Cisco Technical Support Services](#) or [Cisco Advanced Services](#).

## FOR MORE INFORMATION

For more information about the Cisco Catalyst 6500 Series WLSM, contact your local account representative or visit:

<http://www.cisco.com/en/US/products/ps5865/index.html>



### Corporate Headquarters

Cisco Systems, Inc.  
170 West Tasman Drive  
San Jose, CA 95134-1706  
USA  
[www.cisco.com](http://www.cisco.com)  
Tel: 408 526-4000  
800 553-NETS (6387)  
Fax: 408 526-4100

### European Headquarters

Cisco Systems International BV  
Haarlerbergpark  
Haarlerbergweg 13-19  
1101 CH Amsterdam  
The Netherlands  
[www-europe.cisco.com](http://www-europe.cisco.com)  
Tel: 31 0 20 357 1000  
Fax: 31 0 20 357 1100

### Americas Headquarters

Cisco Systems, Inc.  
170 West Tasman Drive  
San Jose, CA 95134-1706  
USA  
[www.cisco.com](http://www.cisco.com)  
Tel: 408 526-7660  
Fax: 408 527-0883

### Asia Pacific Headquarters

Cisco Systems, Inc.  
168 Robinson Road  
#28-01 Capital Tower  
Singapore 068912  
[www.cisco.com](http://www.cisco.com)  
Tel: +65 6317 7777  
Fax: +65 6317 7799

Cisco Systems has more than 200 offices in the following countries and regions. Addresses, phone numbers, and fax numbers are listed on [the Cisco Website at www.cisco.com/go/offices](#).

Argentina • Australia • Austria • Belgium • Brazil • Bulgaria • Canada • Chile • China PRC • Colombia • Costa Rica • Croatia • Cyprus  
Czech Republic • Denmark • Dubai, UAE • Finland • France • Germany • Greece • Hong Kong SAR • Hungary • India • Indonesia • Ireland • Israel  
Italy • Japan • Korea • Luxembourg • Malaysia • Mexico • The Netherlands • New Zealand • Norway • Peru • Philippines • Poland • Portugal  
Puerto Rico • Romania • Russia • Saudi Arabia • Scotland • Singapore • Slovakia • Slovenia • South Africa • Spain • Sweden • Switzerland • Taiwan  
Thailand • Turkey • Ukraine • United Kingdom • United States • Venezuela • Vietnam • Zimbabwe

Copyright © 2006 Cisco Systems, Inc. All rights reserved. CCSP, CCVP, the Cisco Square Bridge logo, Follow Me Browsing, and StackWise are trademarks of Cisco Systems, Inc.; Changing the Way We Work, Live, Play, and Learn, and iQuick Study are service marks of Cisco Systems, Inc.; and Access Registrar, Aironet, BPX, Catalyst, CCDA, CCDP, CCIE, CCIP, CCNA, CCNP, Cisco, the Cisco Certified Internetwork Expert logo, Cisco IOS, Cisco Press, Cisco Systems, Cisco Systems Capital, the Cisco Systems logo, Cisco Unity, Enterprise/Solver, EtherChannel, EtherFast, EtherSwitch, Fast Step, FormShare, GigaDrive, GigaStack, HomeLink, Internet Quotient, IOS, IP/TV, iQ Expertise, the iQ logo, iQ Net Readiness Scorecard, LightStream, Linksys, MeetingPlace, MGX, the Networkers logo, Networking Academy, Network Registrar, Packet, PIX, Post-Routing, Pre-Routing, ProConnect, RateMUX, ScriptShare, SlideCast, SMARTnet, The Fastest Way to Increase Your Internet Quotient, and TransPath are registered trademarks of Cisco Systems, Inc. and/or its affiliates in the United States and certain other countries.

All other trademarks mentioned in this document or Website are the property of their respective owners. The use of the word partner does not imply a partnership relationship between Cisco and any other company. (0601R)

