

So wählen Sie die AAA-Liste basierend auf dem Domännennamen im Intelligent Services Gateway (ISG) aus

Inhalt

[Einführung](#)

[Voraussetzungen](#)

[Anforderungen](#)

[Verwendete Komponenten](#)

[Konfigurieren](#)

[Netzwerkdiagramm](#)

[Konfigurationen](#)

[Überprüfen](#)

[Fehlerbehebung](#)

[Beispielausgabe für Debugging](#)

Einführung

Dieses Dokument bietet die Möglichkeit, eine Gruppe für Authentifizierung, Autorisierung und Abrechnung (Authentication, Authorization, Accounting - AAA) und alle ihr zugeordneten Funktionen (Quell-IP, Radius-Server usw.) auszuwählen, indem Sie einfach eine Auswahl für die abgerufene Domäne des PPP-Teilnehmers treffen.

Voraussetzungen

Anforderungen

Cisco empfiehlt, über Kenntnisse in folgenden Bereichen zu verfügen:

- Virtual Private Dial-up Networks (VPDNs)
- Intelligent Service Gateway (ISG)

Tipp: : Weitere Informationen zum ISG finden Sie im [Konfigurationshandbuch für das Intelligent Services Gateway](#).

Tipp: Im [VPDN-Konfigurationsleitfaden](#) erfahren Sie mehr über die grundlegenden VPDN-Funktionen.

Verwendete Komponenten

Die Informationen in diesem Dokument basieren auf den folgenden Software- und Hardwareversionen:

- ASR1K mit IOS-XE Version 03.17.01.S
- Freier Radius-Server.

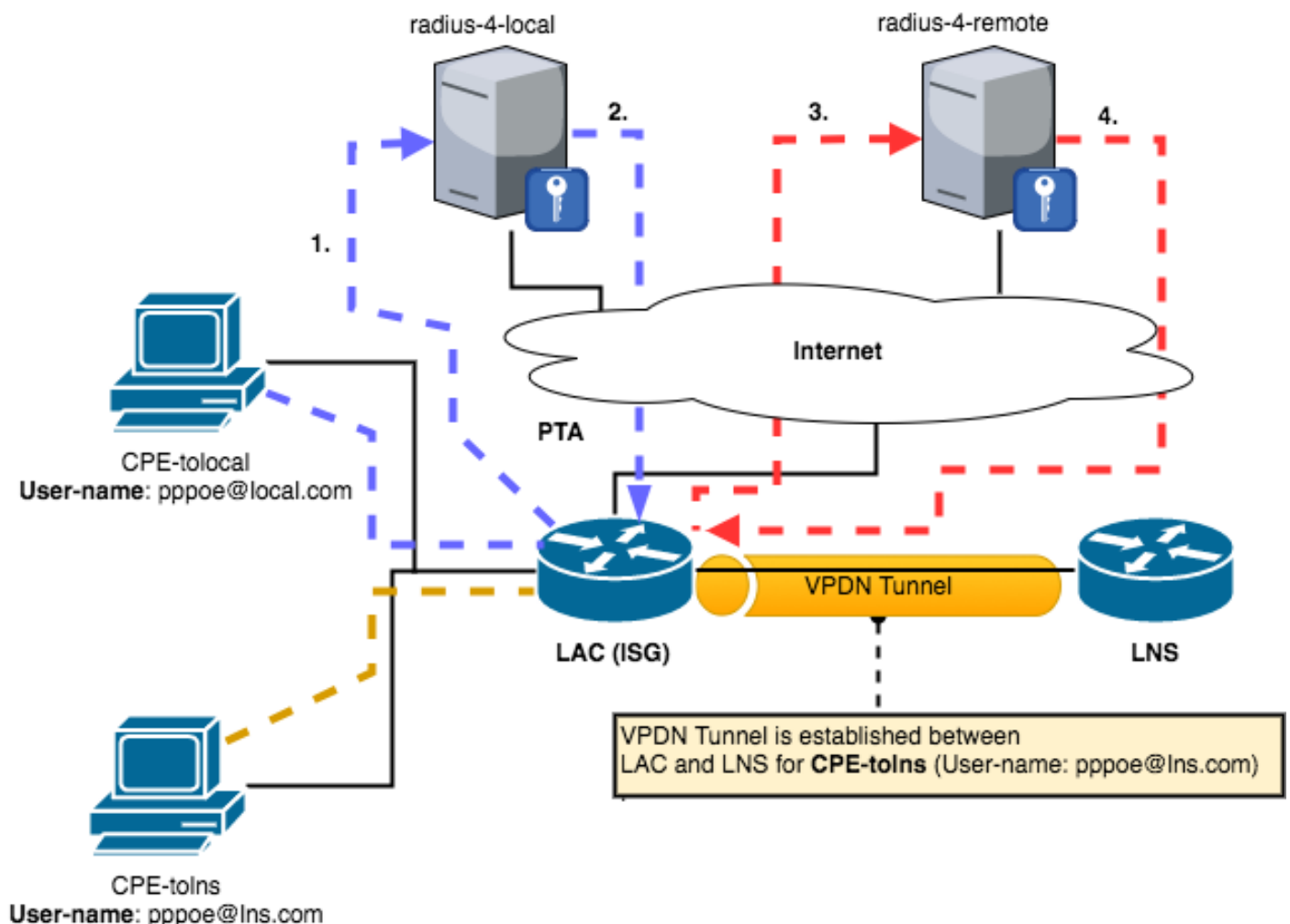
Die Informationen in diesem Dokument wurden von den Geräten in einer bestimmten Laborumgebung erstellt. Alle in diesem Dokument verwendeten Geräte haben mit einer leeren (Standard-)Konfiguration begonnen. Wenn Ihr Netzwerk in Betrieb ist, stellen Sie sicher, dass Sie die potenziellen Auswirkungen eines Befehls verstehen.

Konfigurieren

Mithilfe der in diesem Abschnitt beschriebenen Informationen können Sie die in diesem Dokument beschriebenen Funktionen konfigurieren.

Hinweis: Dies gilt nur für PPP-Abonnenten.

Netzwerkdiagramm



Konfigurationen

Hinweis: Bei dieser Konfiguration werden zwei PPPoE-Clients (PPP over Ethernet) simuliert, indem zwei Subschnittstellen mit unterschiedlichen dot1q-Tags auf dem CPE-Router

(Customer Premise Equipments) erstellt und zwei Dialer-Schnittstellen mit unterschiedlichen PPP-Benutzernamen erstellt werden. So könnten zwei verschiedene Clients in der Topologie simuliert werden.

Dies ist die Konfiguration, die auf dem CPE-Router verwendet wird.

```
interface Ethernet0/1.101
  description ppp using isg
  encapsulation dot1Q 101
  pppoe enable group global
  pppoe-client dial-pool-number 2
!
interface Ethernet0/1.102
  description ppp using isg
  encapsulation dot1Q 102
  pppoe enable
  pppoe-client dial-pool-number 3
!
!--- Following dialer will be used for first CPE with user name pppoe@local.com.
! interface Dialer2
  ip address negotiated
  encapsulation ppp
  shutdown
  dialer pool 2
  ppp pap sent-username pppoe@local.com password 0 cisco !--- Following dialer will be used for
second CPE with user name pppoe@lms.com.
! interface Dialer3
  ip address negotiated
  encapsulation ppp
  shutdown
  dialer pool 3
  ppp pap sent-username pppoe@lms.com password 0 cisco
```

Dies ist die Konfiguration, die auf dem LAC (ISG)-Gerät verwendet wird.

```
!
hostname lac
!
aaa new-model
!
!
aaa group server radius AAA-4-LOCAL ! => Group that will treat the user with domain local.com
  server name RAD-4-LOCAL
  ip radius source-interface Ethernet0/0
!
aaa group server radius AAA-4-FORWARD ! => Group that will treat the user with domain lms.com
  server name RAD-4-FORWARD
  ip radius source-interface Loopback1
!
aaa authentication login default local
aaa authentication ppp default group radius
aaa authentication ppp AAA-4-LOCAL group AAA-4-LOCAL ! => List will call the right group
aaa authentication ppp AAA-4-FORWARD group AAA-4-FORWARD ! => List will call the right group
aaa authorization exec default local
aaa authorization network default group radius
!
aaa session-id common
```

```

!
vpdn enable
!
class-map type control match-all PPP-4-FORWARD  !=> class to match the domain to forward to lns
  match unauthenticated-domain lns.com
  match protocol ppp
!
class-map type control match-all PPP-4-LOCAL  !=> class to match the domain for local
termination
  match unauthenticated-domain local.com
  match protocol ppp
!
class-map type control match-all PPP  !=> class to match ppp packets.
  match protocol ppp
!
policy-map type control PPPOE  !=> All pppoe will first hit this control
policy
  class type control PPP event session-start
    11 collect identifier unauthenticated-domain
    12 service-policy type control DOMAIN  !=> Now we forward to another policy that will
make the selection
!
!
policy-map type control DOMAIN
  class type control PPP-4-LOCAL event session-start  !=> If domain is local.com we use this
    20 authenticate aaa list AAA-4-LOCAL
!
  class type control PPP-4-FORWARD event session-start  !=> If domain is lns.com we use this
    20 authenticate aaa list AAA-4-FORWARD
!
!
bba-group pppoe ppp-isg
  virtual-template 2
!
!
!
interface Loopback0
  ip address 172.19.1.2 255.255.255.255
!
interface Loopback1
  ip address 172.17.21.6 255.255.255.255  !=> radius request for domain lns.com use this
!
interface Ethernet0/0
  ip address 172.16.21.6 255.255.255.252  !=> radius request for domain local.com use
this
!
interface Ethernet0/1
  no ip address
!
interface Ethernet0/1.101
  encapsulation dot1Q 101
  pppoe enable group ppp-isg
!
interface Ethernet0/1.102
  encapsulation dot1Q 102
  pppoe enable group ppp-isg
!
interface Virtual-Template2
  ip unnumbered Loopback0
  ppp authentication pap
  service-policy type control PPPOE
!
radius server RAD-4-LOCAL

```

```

address ipv4 172.16.21.5 auth-port 32645 acct-port 32646
key cisco
!
radius server RAD-4-FORWARD
address ipv4 172.16.21.5 auth-port 11645 acct-port 11646
key cisco
!

```

Dies ist die Konfiguration, die auf dem LNS-Gerät verwendet wird.

```

! hostname lns ! aaa new-model ! ! aaa authentication login default local aaa
authentication ppp default group radius aaa authorization exec default local aaa
authorization network default group radius ! vpdn enable ! vpdn-group default ! Default
L2TP VPDN group accept-dialin protocol l2tp virtual-template 1 l2tp tunnel password
0 cisco ! interface Virtual-Templat1 ip unnumbered Loopback10 peer default ip address
pool allppp ppp mtu adaptive ppp authentication pap ! radius server IOL-alanssie2
address ipv4 172.16.21.9 auth-port 32645 acct-port 32646 key cisco !

```

Überprüfen

Dieser Abschnitt enthält Informationen, mit denen Sie überprüfen können, ob Ihre Konfiguration ordnungsgemäß funktioniert und eine PPPoE-Sitzung auf LAC beendet wird und eine andere Sitzung basierend auf dem Domännennamen an das LNS weitergeleitet wird.

```

lac#show subscriber ses
Codes: Lterm - Local Term, Fwd - forwarded, unauth - unauthenticated, authen -
authenticated, TC Ct. - Number of Traffic Classes on the main session

```

```

Current Subscriber Information: Total sessions 2
Uniq ID Interface State Service Up-time TC Ct. Identifier
39 Vi2.1 authen Lterm 00:38:54 0 pppoe@local.com
40 PPPoE authen Fwd 00:38:01 0 pppoe@lns.com

```

Dieser Befehl zeigt an, dass zwischen LAC und LNS ein VPDN-Tunnel für **pppoe@lns.com** Subscriber eingerichtet wird.

```

lac#sh vpdn tunnel

```

```

L2TP Tunnel Information Total tunnels 1 sessions 1

```

```

LocTunID RemTunID Remote Name State Remote Address Sessn L2TP Class/
Count VPDN Group
7085 24548 lns est 172.19.1.1 1 VPDN ip addr 17
lac#

```

Fehlerbehebung

Dieser Abschnitt enthält Informationen, die Sie zur Fehlerbehebung in Ihrer Konfiguration verwenden können.

Hinweis: Informationen zur Fehlerbehebung bei ISG-Sitzungen finden Sie im Artikel [Troubleshooting ISG with Session Monitoring and Distributed Conditional Debugging](#) Cisco ([Fehlerbehebung für ISG mit Sitzungsüberwachung und verteiltes bedingtes Debuggen](#)).

Beispielausgabe für Debugging

Diese Debug-Ausgabe zeigt an, wie **lokaler Benutzer** auf Grundlage des Domänennamens **local.com** auf dem LAC-Gerät authentifiziert und terminiert wird.

```
*Jan 17 14:36:24.339: SSS PM [uid:39][B4728100][AAA ID:50]: Authen status update; is now
"unauthen"
*Jan 17 14:36:24.339: SSS PM [uid:39][B4728100][AAA ID:50]: IDMGR: assert authen status
"unauthen"
*Jan 17 14:36:24.339: SSS PM [uid:39][B4728100][AAA ID:50]: IDMGR: send event Session Update
*Jan 17 14:36:24.339: SSS PM [uid:39][B4728100][AAA ID:50]: Username key not found in set domain
key API
*Jan 17 14:36:24.339: SSS PM [uid:39][B4728100][AAA ID:50]: Username key not found in set domain
key API
*Jan 17 14:36:24.339: SSS PM [uid:39][B4728100][AAA ID:50]: Updated NAS port for AAA ID 50
*Jan 17 14:36:24.339: SSS PM [uid:39][B4728100][AAA ID:50]: IDMGR: send event Session Update
*Jan 17 14:36:24.339: SSS PM [uid:39][B4728100][AAA ID:50]: Client block is NULL in get client
block with handle D8000027
*Jan 17 14:36:24.339: SSS PM [uid:39][B4728100][AAA ID:50]: Updated key list:
*Jan 17 14:36:24.339: SSS PM [uid:39][B4728100][AAA ID:50]: Input Interface =
"Ethernet0/1.101"
*Jan 17 14:36:24.339: SSS PM [uid:39][B4728100][AAA ID:50]: Access-Type = 3 (PPPoE)
*Jan 17 14:36:24.339: SSS PM [uid:39][B4728100][AAA ID:50]: Protocol-Type = 0 (PPP Access
Protocol)
*Jan 17 14:36:24.339: SSS PM [uid:39][B4728100][AAA ID:50]: Media-Type = 1 (Ethernet)
*Jan 17 14:36:24.339: SSS PM [uid:39][B4728100][AAA ID:50]: Authen-Status = 1
(Unauthenticated)
*Jan 17 14:36:24.339: SSS PM [uid:39][B4728100][AAA ID:50]: Nasport = PPPoEoVLAN: slot 0
adapter 0 port 1 sub-interface 101 IP 0.0.0.0 VPI 0 VCI 0 VLAN 101
*Jan 17 14:36:24.339: SSS PM [uid:39][B4728100][AAA ID:50]: Username key not found in set domain
key API
*Jan 17 14:36:24.339: SSS PM [uid:39][B4728100][AAA ID:50]: Username key not found in set domain
key API
*Jan 17 14:36:24.339: SSS PM [uid:39][B4728100][AAA ID:50]: Client block is NULL in get client
block with handle D8000027
*Jan 17 14:36:24.339: SSS PM [uid:39][B4728100][AAA ID:50]: Updated key list:
*Jan 17 14:36:24.339: SSS PM [uid:39][B4728100][AAA ID:50]: Input Interface =
"Ethernet0/1.101"
*Jan 17 14:36:24.339: SSS PM [uid:39][B4728100][AAA ID:50]: Access-Type = 3 (PPPoE)
*Jan 17 14:36:24.339: SSS PM [uid:39][B4728100][AAA ID:50]: Protocol-Type = 0 (PPP Access
Protocol)
*Jan 17 14:36:24.339: SSS PM [uid:39][B4728100][AAA ID:50]: Media-Type = 1 (Ethernet)
*Jan 17 14:36:24.339: SSS PM [uid:39][B4728100][AAA ID:50]: Authen-Status = 1
(Unauthenticated)
*Jan 17 14:36:24.339: SSS PM [uid:39][B4728100][AAA ID:50]: Nasport = PPPoEoVLAN: slot 0
adapter 0 port 1 sub-interface 101 IP 0.0.0.0 VPI 0 VCI 0 VLAN 101
*Jan 17 14:36:24.339: SSS PM [uid:39][B4728100][AAA ID:50]: Session-Handle = 1358954575
(5100004F)
*Jan 17 14:36:24.339: SSS PM [uid:39][B4728100][AAA ID:50]: SM Policy invoke - Service Selection
Request
*Jan 17 14:36:24.339: SSS PM [uid:39][B4728100][AAA ID:50]: Access type PPPoE
*Jan 17 14:36:24.339: SSS PM [uid:39][B4728100][AAA ID:50]: Successfully added key
SUBTYPE_CONVERTED as FALSE
*Jan 17 14:36:24.339: SSS PM [uid:39][B4728100][AAA ID:50]: RULE: Looking for a rule for event
session-start
*Jan 17 14:36:24.339: SSS PM [uid:39][B4728100][AAA ID:50]: RULE: Intf CloneSrc Vt2: service-
rule any: PPPOE
*Jan 17 14:36:24.339: SSS PM [uid:39][B4728100][AAA ID:50]: RULE: Evaluate "PPPOE" for
session-start
*Jan 17 14:36:24.340: SSS PM [uid:39][B4728100][AAA ID:50]: RULE: Match keys against "PPPOE":
*Jan 17 14:36:24.340: SSS PM [uid:39][B4728100][AAA ID:50]: RULE: Input Interface =
"Ethernet0/1.101"
*Jan 17 14:36:24.340: SSS PM [uid:39][B4728100][AAA ID:50]: RULE: Converted-Session = 0 (NO)
*Jan 17 14:36:24.340: SSS PM [uid:39][B4728100][AAA ID:50]: RULE: Protocol-Type = 0 (PPP
```

Access Protocol)

```
*Jan 17 14:36:24.340: SSS PM [uid:39][B4728100][AAA ID:50]: RULE:      Media-Type = 1 (Ethernet)
*Jan 17 14:36:24.340: SSS PM [uid:39][B4728100][AAA ID:50]: RULE:      Authen-Status = 1
(Unauthenticated)
*Jan 17 14:36:24.340: SSS PM [uid:39][B4728100][AAA ID:50]: RULE:      Nasport = PPPoEoVLAN: slot
0 adapter 0 port 1 sub-interface 101 IP 0.0.0.0 VPI 0 VCI 0 VLAN 101
*Jan 17 14:36:24.340: SSS PM [uid:39][B4728100][AAA ID:50]: RULE:      Session-Handle =
1358954575 (5100004F)
*Jan 17 14:36:24.340: SSS PM [uid:39][B4728100][AAA ID:50]: CONTROL-CLASS-MAP: : [0] match-all
PPP
*Jan 17 14:36:24.340: SSS PM [uid:39][B4728100][AAA ID:50]: CONTROL-CLASS-MAP: : [0] match
identifier protocol ppp [TRUE]
*Jan 17 14:36:24.340: SSS PM [uid:39][B4728100][AAA ID:50]: CONTROL-CLASS-MAP: : [0] match-all
PPP
*Jan 17 14:36:24.340: SSS PM [uid:39][B4728100][AAA ID:50]: CONTROL-CLASS-MAP: : PPP [TRUE]
*Jan 17 14:36:24.340: SSS PM [uid:39][B4728100][AAA ID:50]: RULE:      Matched "PPPOE/PPP event
session-start"
*Jan 17 14:36:24.340: SSS PM [uid:39][B4728100][AAA ID:50]: RULE:      Matched "PPPOE/PPP event
session-start/11 collect identifier unauthenticated-domain "
*Jan 17 14:36:24.340: SSS PM [uid:39][B4728100][AAA ID:50]: RULE[0]: Start
*Jan 17 14:36:24.340: SSS PM [uid:39][B4728100][AAA ID:50]: RULE[0]: PPPOE/PPP event session-
start/11 collect identifier unauthenticated-domain
*Jan 17 14:36:24.340: SSS PM [uid:39][B4728100][AAA ID:50]: SIP [PPPoE] can provide more keys
*Jan 17 14:36:24.340: SSS PM [uid:39][B4728100][AAA ID:50]: RULE[0]: Need key Unauth-Domain
*Jan 17 14:36:24.340: SSS PM [uid:39][B4728100][AAA ID:50]: RULE[1]: Start
*Jan 17 14:36:24.340: SSS PM [uid:39][B4728100][AAA ID:50]: RULE[1]: PPPOE/PPP event session-
start/11 collect identifier unauthenticated-domain
*Jan 17 14:36:24.340: SSS PM [uid:39][B4728100][AAA ID:50]: Event <need keys>, State: initial-
req to need-init-keys
*Jan 17 14:36:24.340: SSS PM [uid:39][B4728100][AAA ID:50]: Policy reply - Need More Keys
*Jan 17 14:36:24.340: SSS PM [uid:39][B4728100][AAA ID:50]: IDMGR: Need:  Unauth-Domain
*Jan 17 14:36:24.340: SSS PM [uid:39][B4728100][AAA ID:50]: Asking client for more keys
*Jan 17 14:36:24.340: SSS PM [uid:39][B4728100][AAA ID:50]: Policy reply - Need More Keys
*Jan 17 14:36:24.340: PPP: Alloc Context [B174CE60]
*Jan 17 14:36:24.340: ppp39 PPP: Phase is ESTABLISHING
*Jan 17 14:36:24.341: SSS PM: ANCP not enabled on 'Ethernet0/1.101' - not retrieving default
shaper value
*Jan 17 14:36:24.341: ppp39 PPP: Using vpn set call direction
*Jan 17 14:36:24.341: ppp39 PPP: Treating connection as a callin
*Jan 17 14:36:24.341: ppp39 PPP: Session handle[99000027] Session id[39]
*Jan 17 14:36:24.341: ppp39 LCP: Event[OPEN] State[Initial to Starting]
*Jan 17 14:36:24.341: ppp39 PPP LCP: Enter passive mode, state[Stopped]
*Jan 17 14:36:24.342: ppp39 LCP: I CONFREQ [Stopped] id 1 len 10
*Jan 17 14:36:24.342: ppp39 LCP:      MagicNumber 0xBCD9A1B6 (0x0506BCD9A1B6)
*Jan 17 14:36:24.343: ppp39 LCP: O CONFREQ [Stopped] id 1 len 18
*Jan 17 14:36:24.343: ppp39 LCP:      MRU 1492 (0x010405D4)
*Jan 17 14:36:24.343: ppp39 LCP:      AuthProto PAP (0x0304C023)
*Jan 17 14:36:24.343: ppp39 LCP:      MagicNumber 0x010DA1F7 (0x0506010DA1F7)
*Jan 17 14:36:24.343: ppp39 LCP: O CONFACK [Stopped] id 1 len 10
*Jan 17 14:36:24.343: ppp39 LCP:      MagicNumber 0xBCD9A1B6 (0x0506BCD9A1B6)
*Jan 17 14:36:24.343: ppp39 LCP: Event[Receive ConfReq+] State[Stopped to ACKsent]
*Jan 17 14:36:24.343: ppp39 LCP: I CONFNAK [ACKsent] id 1 len 8
*Jan 17 14:36:24.343: ppp39 LCP:      MRU 1500 (0x010405DC)
*Jan 17 14:36:24.343: ppp39 LCP: O CONFREQ [ACKsent] id 2 len 18
*Jan 17 14:36:24.343: ppp39 LCP:      MRU 1500 (0x010405DC)
*Jan 17 14:36:24.343: ppp39 LCP:      AuthProto PAP (0x0304C023)
*Jan 17 14:36:24.343: ppp39 LCP:      MagicNumber 0x010DA1F7 (0x0506010DA1F7)
*Jan 17 14:36:24.343: ppp39 LCP: Event[Receive ConfNak/Rej] State[ACKsent to ACKsent]
*Jan 17 14:36:24.343: ppp39 LCP: I CONFACK [ACKsent] id 2 len 18
*Jan 17 14:36:24.343: ppp39 LCP:      MRU 1500 (0x010405DC)
*Jan 17 14:36:24.343: ppp39 LCP:      AuthProto PAP (0x0304C023)
*Jan 17 14:36:24.343: ppp39 LCP:      MagicNumber 0x010DA1F7 (0x0506010DA1F7)
*Jan 17 14:36:24.343: ppp39 LCP: Event[Receive ConfAck] State[ACKsent to Open]
*Jan 17 14:36:24.366: ppp39 PPP: Queue PAP code[1] id[1]
```

*Jan 17 14:36:24.369: ppp39 PPP: Phase is AUTHENTICATING, by this end
*Jan 17 14:36:24.369: ppp39 PAP: Redirect packet to ppp39
***Jan 17 14:36:24.369: ppp39 PAP: I AUTH-REQ id 1 len 26 from "pppoe@local.com"**
***Jan 17 14:36:24.370: ppp39 PAP: Authenticating peer pppoe@local.com**
***Jan 17 14:36:24.370: ppp39 PPP: Phase is FORWARDING, Attempting Forward**
*Jan 17 14:36:24.370: ppp39 LCP: State is Open
*Jan 17 14:36:24.370: SSS PM [uid:39][B4728100][AAA ID:50]: Username key not found in set domain key API
*Jan 17 14:36:24.370: SSS PM [uid:39][B4728100][AAA ID:50]: Client block is NULL in get client block with handle D8000027
*Jan 17 14:36:24.370: SSS PM [uid:39][B4728100][AAA ID:50]: Updated key list:
*Jan 17 14:36:24.370: SSS PM [uid:39][B4728100][AAA ID:50]: Access-Type = 0 (PPP)
*Jan 17 14:36:24.370: SSS PM [uid:39][B4728100][AAA ID:50]: Input Interface = "Ethernet0/1.101"
*Jan 17 14:36:24.370: SSS PM [uid:39][B4728100][AAA ID:50]: Converted-Session = 0 (NO)
*Jan 17 14:36:24.370: SSS PM [uid:39][B4728100][AAA ID:50]: Media-Type = 1 (Ethernet)
*Jan 17 14:36:24.370: SSS PM [uid:39][B4728100][AAA ID:50]: Authen-Status = 1 (Unauthenticated)
*Jan 17 14:36:24.370: SSS PM [uid:39][B4728100][AAA ID:50]: Nasport = PPPoEoVLAN: slot 0 adapter 0 port 1 sub-interface 101 IP 0.0.0.0 VPI 0 VCI 0 VLAN 101
*Jan 17 14:36:24.370: SSS PM [uid:39][B4728100][AAA ID:50]: Session-Handle = 1358954575 (5100004F)
*Jan 17 14:36:24.370: SSS PM [uid:39][B4728100][AAA ID:50]: Protocol-Type = 0 (PPP Access Protocol)
*Jan 17 14:36:24.370: SSS PM [uid:39][B4728100][AAA ID:50]: Unauth-User = "pppoe@local.com"
*Jan 17 14:36:24.370: SSS PM [uid:39][B4728100][AAA ID:50]: Unauth-Domain = "local.com"
*Jan 17 14:36:24.370: SSS PM [uid:39][B4728100][AAA ID:50]: SM Policy invoke - Got More Keys
*Jan 17 14:36:24.370: SSS PM [uid:39][B4728100][AAA ID:50]: Access type PPP
*Jan 17 14:36:24.370: SSS PM [uid:39][B4728100][AAA ID:50]: RULE[0]: Start
*Jan 17 14:36:24.370: SSS PM [uid:39][B4728100][AAA ID:50]: RULE[0]: PPPOE/PPP event session-start/11 collect identifier unauthenticated-domain
*Jan 17 14:36:24.370: SSS PM [uid:39][B4728100][AAA ID:50]: State: need-init-keys to initial-req
*Jan 17 14:36:24.370: SSS PM [uid:39][B4728100][AAA ID:50]: RULE[0]: Have key Unauth-Domain
*Jan 17 14:36:24.370: SSS PM [uid:39][B4728100][AAA ID:50]: RULE[1]: Start
*Jan 17 14:36:24.370: SSS PM [uid:39][B4728100][AAA ID:50]: RULE[1]: PPPOE/PPP event session-start/11 collect identifier unauthenticated-domain
*Jan 17 14:36:24.370: SSS PM [uid:39][B4728100][AAA ID:50]: RULE[2]: Start
*Jan 17 14:36:24.370: SSS PM [uid:39][B4728100][AAA ID:50]: RULE[2]: PPPOE/PPP event session-start/12 service-policy type control DOMAIN
*Jan 17 14:36:24.370: SSS PM [uid:39][B4728100][AAA ID:50]: RULE: Match keys against "DOMAIN":
*Jan 17 14:36:24.370: SSS PM [uid:39][B4728100][AAA ID:50]: RULE: Input Interface = "Ethernet0/1.101"
*Jan 17 14:36:24.370: SSS PM [uid:39][B4728100][AAA ID:50]: RULE: Converted-Session = 0 (NO)
*Jan 17 14:36:24.370: SSS PM [uid:39][B4728100][AAA ID:50]: RULE: Media-Type = 1 (Ethernet)
*Jan 17 14:36:24.370: SSS PM [uid:39][B4728100][AAA ID:50]: RULE: Authen-Status = 1 (Unauthenticated)
*Jan 17 14:36:24.370: SSS PM [uid:39][B4728100][AAA ID:50]: RULE: Nasport = PPPoEoVLAN: slot 0 adapter 0 port 1 sub-interface 101 IP 0.0.0.0 VPI 0 VCI 0 VLAN 101
*Jan 17 14:36:24.370: SSS PM [uid:39][B4728100][AAA ID:50]: RULE: Session-Handle = 1358954575 (5100004F)
*Jan 17 14:36:24.370: SSS PM [uid:39][B4728100][AAA ID:50]: RULE: Protocol-Type = 0 (PPP Access Protocol)
*Jan 17 14:36:24.370: SSS PM [uid:39][B4728100][AAA ID:50]: RULE: Unauth-User = "pppoe@local.com"
*Jan 17 14:36:24.370: SSS PM [uid:39][B4728100][AAA ID:50]: RULE: Unauth-Domain = "local.com"
*Jan 17 14:36:24.370: SSS PM [uid:39][B4728100][AAA ID:50]: CONTROL-CLASS-MAP: : [0] match-all PPP-4-LOCAL
*Jan 17 14:36:24.370: SSS PM [uid:39][B4728100][AAA ID:50]: CONTROL-CLASS-MAP: : [0] match identifier unauthenticated-domain local.com [TRUE]
*Jan 17 14:36:24.370: SSS PM [uid:39][B4728100][AAA ID:50]: CONTROL-CLASS-MAP: : [0] match identifier protocol ppp [TRUE]
*Jan 17 14:36:24.370: SSS PM [uid:39][B4728100][AAA ID:50]: CONTROL-CLASS-MAP: : [0] match-all

PPP-4-LOCAL

```
*Jan 17 14:36:24.370: SSS PM [uid:39][B4728100][AAA ID:50]: CONTROL-CLASS-MAP: : PPP-4-LOCAL
[TRUE]
*Jan 17 14:36:24.370: SSS PM [uid:39][B4728100][AAA ID:50]: RULE:      Matched "DOMAIN/PPP-4-LOCAL
event session-start"
*Jan 17 14:36:24.371: SSS PM [uid:39][B4728100][AAA ID:50]: RULE[3]: Start
*Jan 17 14:36:24.371: SSS PM [uid:39][B4728100][AAA ID:50]: RULE[3]: DOMAIN/PPP-4-LOCAL event
session-start/20 authenticate aaa list AAA-4-LOCAL
*Jan 17 14:36:24.371: SSS PM [uid:39][B4728100][AAA ID:50]: SIP [PPP] can provide more keys
*Jan 17 14:36:24.371: SSS PM [uid:39][B4728100][AAA ID:50]: RULE[3]: Using AAA-Authen-Method-
List AAA-4-LOCAL
*Jan 17 14:36:24.371: SSS PM [uid:39][B4728100][AAA ID:50]: RULE[3]: Need key Auth-User
*Jan 17 14:36:24.371: SSS PM [uid:39][B4728100][AAA ID:50]: RULE[4]: Start
*Jan 17 14:36:24.371: SSS PM [uid:39][B4728100][AAA ID:50]: RULE[4]: DOMAIN/PPP-4-LOCAL event
session-start/20 authenticate aaa list AAA-4-LOCAL
*Jan 17 14:36:24.371: SSS PM [uid:39][B4728100][AAA ID:50]: Event <need keys>, State: initial-
req to need-init-keys
*Jan 17 14:36:24.371: SSS PM [uid:39][B4728100][AAA ID:50]: Policy reply - Need More Keys
*Jan 17 14:36:24.371: SSS PM [uid:39][B4728100][AAA ID:50]: IDMGR: Need:  Auth-User
*Jan 17 14:36:24.371: SSS PM [uid:39][B4728100][AAA ID:50]: IDMGR: ask for authen status
*Jan 17 14:36:24.371: SSS PM [uid:39][B4728100][AAA ID:50]: IDMGR:  request, Query Session
Authenticated Status
*Jan 17 14:36:24.371: SSS PM [uid:39][B4728100][AAA ID:50]: IDMGR: reply, Query Session
Authenticated Status = no-record-found
*Jan 17 14:36:24.371: SSS PM [uid:39][B4728100][AAA ID:50]: IDMGR:  session NOT authenticated
*Jan 17 14:36:24.371: SSS PM [uid:39][B4728100][AAA ID:50]: Event <idmgr didn't get keys>,
State: need-init-keys to need-init-keys
*Jan 17 14:36:24.371: SSS PM [uid:39][B4728100][AAA ID:50]: Asking client for more keys
*Jan 17 14:36:24.371: SSS PM [uid:39][B4728100][AAA ID:50]: Policy reply - Need More Keys
*Jan 17 14:36:24.371: ppp39 PPP: Phase is AUTHENTICATING, Unauthenticated User
*Jan 17 14:36:24.371: AAA/AUTHEN/PPP (00000032): Pick method list 'AAA-4-LOCAL'  <= Correct list
for local.com
*Jan 17 14:36:24.371: RADIUS/ENCODE(00000032):Orig. component type = PPPoE
*Jan 17 14:36:24.371: RADIUS: DSL line rate attributes successfully added
*Jan 17 14:36:24.371: RADIUS(00000032): Config NAS IP: 172.16.21.6
*Jan 17 14:36:24.371: RADIUS(00000032): Config NAS IPv6: ::
*Jan 17 14:36:24.371: RADIUS/ENCODE(00000032): acct_session_id: 40
*Jan 17 14:36:24.371: RADIUS(00000032): sending
*Jan 17 14:36:24.371: RADIUS(00000032): Send Access-Request to 172.16.21.5:32645 id 1645/50, len
137
*Jan 17 14:36:24.371: RADIUS:  authenticator E2 2A B0 15 24 CA 79 8C - A5 61 E4 1E C5 52 BC EF
*Jan 17 14:36:24.371: RADIUS:  Framed-Protocol      [7]  6  PPP                               [1]
*Jan 17 14:36:24.371: RADIUS:  User-Name           [1]  17  "pppoe@local.com"
*Jan 17 14:36:24.371: RADIUS:  User-Password       [2]  18  *
*Jan 17 14:36:24.371: RADIUS:  NAS-Port-Type       [61] 6  Virtual                               [5]
*Jan 17 14:36:24.371: RADIUS:  NAS-Port           [5]  6  0
*Jan 17 14:36:24.371: RADIUS:  NAS-Port-Id        [87] 11  "0/0/1/101"
*Jan 17 14:36:24.371: RADIUS:  Vendor, Cisco      [26] 41
*Jan 17 14:36:24.371: RADIUS:  Cisco AVpair       [1]  35  "client-mac-address=aabb.cc00.d210"
*Jan 17 14:36:24.371: RADIUS:  Service-Type       [6]  6  Framed                               [2]
*Jan 17 14:36:24.371: RADIUS:  NAS-IP-Address     [4]  6  172.16.21.6  <= Correct Nas for
Local.com
*Jan 17 14:36:24.371: RADIUS(00000032): Sending a IPv4 Radius Packet
*Jan 17 14:36:24.372: RADIUS(00000032): Started 5 sec timeout
*Jan 17 14:36:24.372: RADIUS: Received from id 1645/50 172.16.21.5:32645, Access-Accept, len 60
*Jan 17 14:36:24.372: RADIUS:  authenticator 1A EE FC 44 78 8A 56 DF - 41 57 45 27 4C A7 59 C6
*Jan 17 14:36:24.372: RADIUS:  Vendor, Cisco      [26] 34
*Jan 17 14:36:24.372: RADIUS:  Cisco AVpair       [1]  28  "ip:ip-unnumbered=loopback0"
*Jan 17 14:36:24.372: RADIUS:  Framed-IP-Address  [8]  6  179.1.1.1
*Jan 17 14:36:24.372: RADIUS(00000032): Received from id 1645/50
*Jan 17 14:36:24.373: ppp39 PPP: Phase is FORWARDING, Attempting Forward
*Jan 17 14:36:24.373: SSS PM [uid:39][B4728100][AAA ID:50]: Authen status update; is now
"authen"
*Jan 17 14:36:24.373: SSS PM [uid:39][B4728100][AAA ID:50]: IDMGR: assert authen status "authen"
```

```

*Jan 17 14:36:24.373: SSS PM [uid:39][B4728100][AAA ID:50]: IDMGR: send event Session Update
*Jan 17 14:36:24.373: SSS PM [uid:39][B4728100][AAA ID:50]: IDMGR: with username
"pppoe@local.com"
*Jan 17 14:36:24.373: SSS PM [uid:39][B4728100][AAA ID:50]: Session activation: ok
*Jan 17 14:36:24.373: SSS PM [uid:39][B4728100][AAA ID:50]: Client block is NULL in get client
block with handle D8000027
*Jan 17 14:36:24.373: SSS PM [uid:39][B4728100][AAA ID:50]: Updated key list:
*Jan 17 14:36:24.373: SSS PM [uid:39][B4728100][AAA ID:50]:   AAA-Attr-List = FB0003D0
*Jan 17 14:36:24.373: SSS PM [uid:39][B4728100][AAA ID:50]:   ip-unnumbered      0
"loopback0"
*Jan 17 14:36:24.373: SSS PM [uid:39][B4728100][AAA ID:50]:   addr                0
179.1.1.1
*Jan 17 14:36:24.373: SSS PM [uid:39][B4728100][AAA ID:50]:   Access-Type = 0 (PPP)
*Jan 17 14:36:24.373: SSS PM [uid:39][B4728100][AAA ID:50]:   Unauth-User = "pppoe@local.com"
*Jan 17 14:36:24.373: SSS PM [uid:39][B4728100][AAA ID:50]:   Unauth-Domain = "local.com"
*Jan 17 14:36:24.373: SSS PM [uid:39][B4728100][AAA ID:50]:   Input Interface =
"Ethernet0/1.101"
*Jan 17 14:36:24.373: SSS PM [uid:39][B4728100][AAA ID:50]:   Converted-Session = 0 (NO)
*Jan 17 14:36:24.373: SSS PM [uid:39][B4728100][AAA ID:50]:   Media-Type = 1 (Ethernet)
*Jan 17 14:36:24.373: SSS PM [uid:39][B4728100][AAA ID:50]:   Authen-Status = 0 (Authenticated)
*Jan 17 14:36:24.373: SSS PM [uid:39][B4728100][AAA ID:50]:   Nasport = PPPoEoVLAN: slot 0
adapter 0 port 1 sub-interface 101 IP 0.0.0.0 VPI 0 VCI 0 VLAN 101
*Jan 17 14:36:24.373: SSS PM [uid:39][B4728100][AAA ID:50]:   Session-Handle = 1358954575
(5100004F)
*Jan 17 14:36:24.373: SSS PM [uid:39][B4728100][AAA ID:50]:   AAA-Authen-Method-List = "AAA-4-
LOCAL"
*Jan 17 14:36:24.373: SSS PM [uid:39][B4728100][AAA ID:50]:   Protocol-Type = 0 (PPP Access
Protocol)
*Jan 17 14:36:24.373: SSS PM [uid:39][B4728100][AAA ID:50]:   Final = 1 (YES)
*Jan 17 14:36:24.373: SSS PM [uid:39][B4728100][AAA ID:50]:   Auth-User = "pppoe@local.com"
*Jan 17 14:36:24.373: SSS PM [uid:39][B4728100][AAA ID:50]:   Auth-Domain = "local.com"
*Jan 17 14:36:24.373: SSS PM [uid:39][B4728100][AAA ID:50]: SM Policy invoke - Got More Keys
*Jan 17 14:36:24.373: SSS PM [uid:39][B4728100][AAA ID:50]: Access type PPP: final key
*Jan 17 14:36:24.373: SSS PM [uid:39][B4728100][AAA ID:50]: Must apply config before continuing
*Jan 17 14:36:24.373: SSS PM [uid:39][B4728100][AAA ID:50]: Handling Config Request from Client
*Jan 17 14:36:24.373: SSS PM [uid:39][B4728100][AAA ID:50]: Event <got process config req>,
State: need-init-keys to need-init-keys
*Jan 17 14:36:24.373: SSS PM [uid:39][B4728100][AAA ID:50]: Handling Process Config
*Jan 17 14:36:24.373: SSS PM [uid:39][B4728100][AAA ID:50]: Apply config request set to AAA list
Config: ip-unnumbered      0 "loopback0"
Config: addr                0 179.1.1.1
*Jan 17 14:36:24.373: SSS PM [uid:39][B4728100][AAA ID:50]: Sending pppoe@local.com request to
AAA
*Jan 17 14:36:24.373: SSS PM [uid:39][B4728100][AAA ID:50]: SSS PM: Allocating per-user profile
info
*Jan 17 14:36:24.373: SSS PM [uid:39][B4728100][AAA ID:50]: SSS PM: Add per-user profile info to
policy context
*Jan 17 14:36:24.373: SSS AAA AUTHOR [uid:39][AAA ID:50]: Root SIP PPPoE
*Jan 17 14:36:24.373: SSS AAA AUTHOR [uid:39][AAA ID:50]: Enable PPPoE parsing
*Jan 17 14:36:24.373: SSS AAA AUTHOR [uid:39][AAA ID:50]: Enable PPP parsing
*Jan 17 14:36:24.373: SSS PM [uid:39][B4728100][AAA ID:50]: ACTIVE HANDLE[0]: Snapshot captured
in Active context
*Jan 17 14:36:24.373: SSS PM [uid:39][B4728100][AAA ID:50]: ACTIVE HANDLE[0]: Active context
created
*Jan 17 14:36:24.373: SSS AAA AUTHOR [uid:39][AAA ID:50]: Event <make request>, state changed
from idle to authorizing
*Jan 17 14:36:24.373: SSS AAA AUTHOR [uid:39][AAA ID:50]: Active key set to Auth-User
*Jan 17 14:36:24.373: SSS AAA AUTHOR [uid:39][AAA ID:50]: Authorizing key pppoe@local.com
*Jan 17 14:36:24.373: SSS AAA AUTHOR [uid:39][AAA ID:50]: Spoofed AAA reply sent for key
pppoe@local.com
*Jan 17 14:36:24.373: SSS AAA AUTHOR [uid:39][AAA ID:50]: Received an AAA pass
*Jan 17 14:36:24.373: SSS AAA AUTHOR [uid:39][AAA ID:50]: [B4728100]:Reply message not exist
Initial attr ip-unnumbered      0 "loopback0"
Initial attr addr                0 179.1.1.1

```

*Jan 17 14:36:24.373: SSS PM: PARAMETERIZED-QoS: QoS parameters
*Jan 17 14:36:24.374: SSS PM [uid:39][B4728100][AAA ID:50]: RULE: VRF Parsing routine:
ip-unnumbered 0 "loopback0"
addr 0 179.1.1.1
*Jan 17 14:36:24.374: SSS PM: No VPDN attributes or policy found
*Jan 17 14:36:24.374: SSS PM LTERM [uid:39][AAA ID:50]: Process Attr: ip-unnumbered 0
"loopback0"
*Jan 17 14:36:24.374: SSS AAA AUTHOR [uid:39][AAA ID:50]: Parsed service; Local
*Jan 17 14:36:24.374: SSS AAA AUTHOR [uid:39][AAA ID:50]: SIP PPP[A4700F0] parsed as Success
*Jan 17 14:36:24.374: SSS AAA AUTHOR [uid:39][AAA ID:50]: SIP PPP[B009900] parsed as Ignore
*Jan 17 14:36:24.374: SSS AAA AUTHOR [uid:39][AAA ID:50]: SIP PPPoE[A501AC0] parsed as Success
*Jan 17 14:36:24.374: SSS AAA AUTHOR [uid:39][AAA ID:50]: Event <found service>, state changed
from authorizing to complete
*Jan 17 14:36:24.374: SSS AAA AUTHOR [uid:39][AAA ID:50]: Found service info for key
pppoe@local.com
*Jan 17 14:36:24.374: SSS AAA AUTHOR [uid:39][AAA ID:50]: Active Handle present - AC000006
*Jan 17 14:36:24.374: SSS PM [uid:39][B4728100][AAA ID:50]: Apply config handle [AF0003D3] now
set to [270003DA]
*Jan 17 14:36:24.374: SSS PM [uid:39][B4728100][AAA ID:50]: ACTIVE HANDLE[0]: Snapshot reverted
from Active context to policy context
*Jan 17 14:36:24.374: SSS AAA AUTHOR [uid:39][AAA ID:50]: Freeing Active Handle; SSS Policy
Context Handle = D8000027
*Jan 17 14:36:24.374: SSS PM [uid:39][B4728100][AAA ID:50]: ACTIVE HANDLE[2829]: Released active
handle
*Jan 17 14:36:24.374: SSS AAA AUTHOR [uid:39][AAA ID:50]: PM directive AAA:Local maps to
PM:Local Terminate
*Jan 17 14:36:24.374: SSS PM [uid:39][B4728100][AAA ID:50]: PROFILE: store profile
"pppoe@local.com"
*Jan 17 14:36:24.374: SSS PM: PROFILE-DB: is profile "pppoe@local.com" in DB
*Jan 17 14:36:24.374: SSS PM: PROFILE-DB: Computed hash value = 353387640
*Jan 17 14:36:24.374: SSS PM: PROFILE-DB: No, add new list
*Jan 17 14:36:24.374: SSS PM: PROFILE-DB: create "pppoe@local.com"
*Jan 17 14:36:24.374: SSS PM: PROFILE-DB: create "pppoe@local.com"/B48191BC hdl C80003DC ref
1
*Jan 17 14:36:24.374: SSS PM [uid:39][B4728100][AAA ID:50]: PROFILE: create B481B90C, ref 1
*Jan 17 14:36:24.374: SSS AAA AUTHOR [uid:39][AAA ID:50]: Event <free request>, state changed
from complete to terminal
*Jan 17 14:36:24.374: SSS AAA AUTHOR [uid:39][AAA ID:50]: Cancel request
*Jan 17 14:36:24.374: SSS PM [uid:39][B4728100][AAA ID:50]: Handling Author Found Event
*Jan 17 14:36:24.374: SSS PM [uid:39][B4728100][AAA ID:50]: Plumbing proposed by FSP
*Jan 17 14:36:24.374: SSS PM [uid:39][B4728100][AAA ID:50]: Policy reply - Local Terminate
*Jan 17 14:36:24.374: SSS PM [uid:39][B4728100][AAA ID:50]: FSP info: B45EC130/Local data:
B45EC0E0 SVM: 00000000
*Jan 17 14:36:24.374: SSS PM [uid:39][B4728100][AAA ID:50]: Feature info: B4814320 Type: IP
Config
*Jan 17 14:36:24.374: SSS PM [uid:39][B4728100][AAA ID:50]: : Config level: Per-user
*Jan 17 14:36:24.374: SSS PM [uid:39][B4728100][AAA ID:50]: : IDB type: Sub-if or
not required
*Jan 17 14:36:24.374: SSS PM [uid:39][B4728100][AAA ID:50]: Apply of config finished; provide
the found network service
*Jan 17 14:36:24.374: SSS PM [uid:39][B4728100][AAA ID:50]: Network service found; continuing
rule
*Jan 17 14:36:24.374: SSS PM [uid:39][B4728100][AAA ID:50]: RULE[0]: Continue
*Jan 17 14:36:24.374: SSS PM [uid:39][B4728100][AAA ID:50]: RULE[0]: DOMAIN/PPP-4-LOCAL event
session-start/20 authenticate aaa list AAA-4-LOCAL
*Jan 17 14:36:24.374: SSS PM [uid:39][B4728100][AAA ID:50]: RULE[0]: Run action with no altered
name
*Jan 17 14:36:24.374: SSS PM [uid:39][B4728100][AAA ID:50]: State: need-init-keys to initial-req
*Jan 17 14:36:24.374: SSS PM [uid:39][B4728100][AAA ID:50]: RULE[0]: Have key Auth-User
*Jan 17 14:36:24.374: SSS PM [uid:39][B4728100][AAA ID:50]: RULE[1]: Continue
*Jan 17 14:36:24.374: SSS PM [uid:39][B4728100][AAA ID:50]: RULE[1]: DOMAIN/PPP-4-LOCAL event
session-start/20 authenticate aaa list AAA-4-LOCAL
*Jan 17 14:36:24.374: SSS PM [uid:39][B4728100][AAA ID:50]: RULE[1]: Back to parent rule
*Jan 17 14:36:24.374: SSS PM [uid:39][B4728100][AAA ID:50]: RULE[1]: Run next parent action

*Jan 17 14:36:24.374: SSS PM [uid:39][B4728100][AAA ID:50]: RULE[2]: Continue
*Jan 17 14:36:24.374: SSS PM [uid:39][B4728100][AAA ID:50]: RULE[2]: PPPOE/PPP event session-start/12 service-policy type control DOMAIN
*Jan 17 14:36:24.374: SSS PM [uid:39][B4728100][AAA ID:50]: Client block is NULL in get client block with handle D8000027
*Jan 17 14:36:24.374: SSS PM [uid:39][B4728100][AAA ID:50]: RULE[2]: No more actions to run
*Jan 17 14:36:24.374: SSS PM [uid:39][B4728100][AAA ID:50]: RULE[3]: Continue
*Jan 17 14:36:24.374: SSS PM [uid:39][B4728100][AAA ID:50]: RULE[3]: PPPOE/PPP event session-start/12 service-policy type control DOMAIN
*Jan 17 14:36:24.374: SSS PM [uid:39][B4728100][AAA ID:50]: RULE[3]: Using previously offered directive Local Terminate
*Jan 17 14:36:24.374: SSS PM [uid:39][B4728100][AAA ID:50]: RULE[4]: Continue
*Jan 17 14:36:24.374: SSS PM [uid:39][B4728100][AAA ID:50]: RULE[4]: PPPOE/PPP event session-start/12 service-policy type control DOMAIN
*Jan 17 14:36:24.374: SSS PM [uid:39][B4728100][AAA ID:50]: Client block is NULL in get client block with handle D8000027
*Jan 17 14:36:24.374: SSS PM [uid:39][B4728100][AAA ID:50]: Event <srvf found>, State: initial-req to wait-for-events
*Jan 17 14:36:24.374: SSS PM [uid:39][B4728100][AAA ID:50]: Handling Service Direction
*Jan 17 14:36:24.374: SSS PM [uid:39][B4728100][AAA ID:50]: Policy reply - Local Terminate
*Jan 17 14:36:24.374: SSS PM [uid:39][B4728100][AAA ID:50]: Plumbing proposed by FSP
*Jan 17 14:36:24.374: SSS PM [uid:39][B4728100][AAA ID:50]: Policy reply - Local Terminate
*Jan 17 14:36:24.374: SSS PM [uid:39][B4728100][AAA ID:50]: RULE: Looking for a rule for event session-service-found
*Jan 17 14:36:24.374: SSS PM [uid:39][B4728100][AAA ID:50]: RULE: Intf CloneSrc Vt2: service-rule any: PPPOE
*Jan 17 14:36:24.374: SSS PM [uid:39][B4728100][AAA ID:50]: RULE: Evaluate "PPPOE" for session-service-found
*Jan 17 14:36:24.374: SSS PM [uid:39][B4728100][AAA ID:50]: RULE: Not matched "PPPOE/PPP event session-start"
*Jan 17 14:36:24.374: SSS PM [uid:39][B4728100][AAA ID:50]: RULE: No match for "PPPOE"
*Jan 17 14:36:24.375: SSS PM [uid:39][B4728100][AAA ID:50]: RULE: Intf InputI/f Et0/1.101: service-rule any: None
*Jan 17 14:36:24.375: SSS PM [uid:39][B4728100][AAA ID:50]: RULE: Glob: service-rule any: None
*Jan 17 14:36:24.377: SSS PM [uid:39][B4728100][AAA ID:50]: SM Policy invoke - Apply Config Success
*Jan 17 14:36:24.377: SSS PM [uid:39][B4728100][AAA ID:50]: [PARAMETERIZED-QoS]: No rabapol context created yet for handle [D8000027], returning compatible
*Jan 17 14:36:24.377: SSS PM [uid:39][B4728100][AAA ID:50]: Event <got apply config success>, State: wait-for-events to wait-for-events
*Jan 17 14:36:24.377: SSS PM [uid:39][B4728100][AAA ID:50]: Handling Apply Config; SUCCESS
*Jan 17 14:36:24.377: SSS PM [uid:39][B4728100][AAA ID:50]: session start done
*Jan 17 14:36:24.377: SSS PM [uid:39][B4728100][AAA ID:50]: Removed attribute list just processed
*Jan 17 14:36:24.377: SSS PM [uid:39][B4728100][AAA ID:50]: no callback for callback north
*Jan 17 14:36:24.377: SSS PM [uid:39][B4728100][AAA ID:50]: Client block is NULL in get client block with handle D8000027
*Jan 17 14:36:24.377: SSS PM [uid:39][B4728100][AAA ID:50]: Null client block; Can't update RP
*Jan 17 14:36:24.377: SSS PM [uid:39][B4728100][AAA ID:50]: Client block is NULL in get client block with handle D8000027
*Jan 17 14:36:24.377: SSS PM [uid:39][B4728100][AAA ID:50]: No pending events to process
*Jan 17 14:36:24.377: SSS PM [uid:39][B4728100][AAA ID:50]: No pending eventstst
*Jan 17 14:36:24.377: AAA/BIND(00000032): Bind i/f Virtual-Access2.1
*Jan 17 14:36:24.377: Vi2.1 PPP: Phase is AUTHENTICATING, Authenticated User
*Jan 17 14:36:24.377: Vi2.1 PAP: O AUTH-ACK id 1 len 5
*Jan 17 14:36:24.378: Vi2.1 PPP: No AAA accounting method list
*Jan 17 14:36:24.378: Vi2.1 PPP: Phase is UP
*Jan 17 14:36:24.378: Vi2.1 IPCP: Protocol configured, start CP. state[Initial]
*Jan 17 14:36:24.378: Vi2.1 IPCP: Event[OPEN] State[Initial to Starting]
*Jan 17 14:36:24.378: Vi2.1 IPCP: O CONFREQ [Starting] id 1 len 10
*Jan 17 14:36:24.378: Vi2.1 IPCP: Address 172.19.1.2 (0x0306AC130102)
*Jan 17 14:36:24.378: Vi2.1 IPCP: Event[UP] State[Starting to REQsent]
*Jan 17 14:36:24.379: Vi2.1 IPCP: I CONFREQ [REQsent] id 1 len 10
*Jan 17 14:36:24.379: Vi2.1 IPCP: Address 0.0.0.0 (0x030600000000)

```
*Jan 17 14:36:24.379: Vi2.1 IPCP AUTHOR: Start. Her address 0.0.0.0, we want 0.0.0.0
*Jan 17 14:36:24.379: Vi2.1 IPCP AUTHOR: Done. Her address 0.0.0.0, we want 179.1.1.1
*Jan 17 14:36:24.379: Vi2.1 IPCP: O CONFNAK [REQsent] id 1 len 10
*Jan 17 14:36:24.379: Vi2.1 IPCP: Address 179.1.1.1 (0x0306B3010101)
*Jan 17 14:36:24.379: Vi2.1 IPCP: Event[Receive ConfReq-] State[REQsent to REQsent]
*Jan 17 14:36:24.379: Vi2.1 CDPCP: I CONFREQ [UNKNOWN] id 1 len 4
*Jan 17 14:36:24.379: Vi2.1 LCP: O PROTREJ [Open] id 3 len 10 protocol CDPCP (0x01010004)
*Jan 17 14:36:24.379: Vi2.1 IPCP: I CONFACK [REQsent] id 1 len 10
*Jan 17 14:36:24.379: Vi2.1 IPCP: Address 172.19.1.2 (0x0306AC130102)
*Jan 17 14:36:24.379: Vi2.1 IPCP: Event[Receive ConfAck] State[REQsent to ACKrcvd]
*Jan 17 14:36:24.380: Vi2.1 IPCP: I CONFREQ [ACKrcvd] id 2 len 10
*Jan 17 14:36:24.380: Vi2.1 IPCP: Address 179.1.1.1 (0x0306B3010101)
*Jan 17 14:36:24.380: Vi2.1 IPCP: O CONFACK [ACKrcvd] id 2 len 10
*Jan 17 14:36:24.380: Vi2.1 IPCP: Address 179.1.1.1 (0x0306B3010101)
*Jan 17 14:36:24.380: Vi2.1 IPCP: Event[Receive ConfReq+] State[ACKrcvd to Open]
*Jan 17 14:36:24.401: Vi2.1 IPCP: State is Open
*Jan 17 14:36:24.401: Vi2.1 Added to neighbor route AVL tree: topoid 0, address 179.1.1.1
*Jan 17 14:36:24.401: Vi2.1 IPCP: Install route to 179.1.1.1
```

Diese Debug-Ausgabe gibt an, wie **Remote-Benutzer** basierend auf dem Domännennamen **Ins.com** authentifiziert und an das LNS-Gerät weitergeleitet werden.

```
*Jan 17 14:37:17.353: SSS PM [uid:40][B4728388][AAA ID:51]: Authen status update; is now
"unauthen"
*Jan 17 14:37:17.353: SSS PM [uid:40][B4728388][AAA ID:51]: IDMGR: assert authen status
"unauthen"
*Jan 17 14:37:17.353: SSS PM [uid:40][B4728388][AAA ID:51]: IDMGR: send event Session Update
*Jan 17 14:37:17.353: SSS PM [uid:40][B4728388][AAA ID:51]: Username key not found in set domain
key API
*Jan 17 14:37:17.353: SSS PM [uid:40][B4728388][AAA ID:51]: Username key not found in set domain
key API
*Jan 17 14:37:17.353: SSS PM [uid:40][B4728388][AAA ID:51]: Updated NAS port for AAA ID 51
*Jan 17 14:37:17.353: SSS PM [uid:40][B4728388][AAA ID:51]: IDMGR: send event Session Update
*Jan 17 14:37:17.354: SSS PM [uid:40][B4728388][AAA ID:51]: Client block is NULL in get client
block with handle 1D000028
*Jan 17 14:37:17.354: SSS PM [uid:40][B4728388][AAA ID:51]: Updated key list:
*Jan 17 14:37:17.354: SSS PM [uid:40][B4728388][AAA ID:51]: Input Interface =
"Ethernet0/1.102"
*Jan 17 14:37:17.354: SSS PM [uid:40][B4728388][AAA ID:51]: Access-Type = 3 (PPPoE)
*Jan 17 14:37:17.354: SSS PM [uid:40][B4728388][AAA ID:51]: Protocol-Type = 0 (PPP Access
Protocol)
*Jan 17 14:37:17.354: SSS PM [uid:40][B4728388][AAA ID:51]: Media-Type = 1 (Ethernet)
*Jan 17 14:37:17.354: SSS PM [uid:40][B4728388][AAA ID:51]: Authen-Status = 1
(Unauthenticated)
*Jan 17 14:37:17.354: SSS PM [uid:40][B4728388][AAA ID:51]: Nasport = PPPoEoVLAN: slot 0
adapter 0 port 1 sub-interface 102 IP 0.0.0.0 VPI 0 VCI 0 VLAN 102
*Jan 17 14:37:17.354: SSS PM [uid:40][B4728388][AAA ID:51]: Username key not found in set domain
key API
*Jan 17 14:37:17.354: SSS PM [uid:40][B4728388][AAA ID:51]: Username key not found in set domain
key API
*Jan 17 14:37:17.354: SSS PM [uid:40][B4728388][AAA ID:51]: Client block is NULL in get client
block with handle 1D000028
*Jan 17 14:37:17.354: SSS PM [uid:40][B4728388][AAA ID:51]: Updated key list:
*Jan 17 14:37:17.354: SSS PM [uid:40][B4728388][AAA ID:51]: Input Interface =
"Ethernet0/1.102"
*Jan 17 14:37:17.354: SSS PM [uid:40][B4728388][AAA ID:51]: Access-Type = 3 (PPPoE)
*Jan 17 14:37:17.354: SSS PM [uid:40][B4728388][AAA ID:51]: Protocol-Type = 0 (PPP Access
Protocol)
*Jan 17 14:37:17.354: SSS PM [uid:40][B4728388][AAA ID:51]: Media-Type = 1 (Ethernet)
*Jan 17 14:37:17.354: SSS PM [uid:40][B4728388][AAA ID:51]: Authen-Status = 1
(Unauthenticated)
*Jan 17 14:37:17.354: SSS PM [uid:40][B4728388][AAA ID:51]: Nasport = PPPoEoVLAN: slot 0
adapter 0 port 1 sub-interface 102 IP 0.0.0.0 VPI 0 VCI 0 VLAN 102
```

*Jan 17 14:37:17.354: SSS PM [uid:40][B4728388][AAA ID:51]: Session-Handle = 385876049 (17000051)

*Jan 17 14:37:17.354: SSS PM [uid:40][B4728388][AAA ID:51]: SM Policy invoke - Service Selection Request

*Jan 17 14:37:17.354: SSS PM [uid:40][B4728388][AAA ID:51]: Access type PPPOE

*Jan 17 14:37:17.354: SSS PM [uid:40][B4728388][AAA ID:51]: Successfully added key SUBTYPE_CONVERTED as FALSE

*Jan 17 14:37:17.354: SSS PM [uid:40][B4728388][AAA ID:51]: RULE: Looking for a rule for event session-start

*Jan 17 14:37:17.354: SSS PM [uid:40][B4728388][AAA ID:51]: RULE: Intf CloneSrc Vt2: service-rule any: PPPOE

*Jan 17 14:37:17.354: SSS PM [uid:40][B4728388][AAA ID:51]: RULE: Evaluate "PPPOE" for session-start

*Jan 17 14:37:17.354: SSS PM [uid:40][B4728388][AAA ID:51]: RULE: Match keys against "PPPOE":

*Jan 17 14:37:17.354: SSS PM [uid:40][B4728388][AAA ID:51]: RULE: Input Interface = "Ethernet0/1.102"

*Jan 17 14:37:17.354: SSS PM [uid:40][B4728388][AAA ID:51]: RULE: Converted-Session = 0 (NO)

*Jan 17 14:37:17.354: SSS PM [uid:40][B4728388][AAA ID:51]: RULE: Protocol-Type = 0 (PPP Access Protocol)

*Jan 17 14:37:17.354: SSS PM [uid:40][B4728388][AAA ID:51]: RULE: Media-Type = 1 (Ethernet)

*Jan 17 14:37:17.354: SSS PM [uid:40][B4728388][AAA ID:51]: RULE: Authen-Status = 1 (Unauthenticated)

*Jan 17 14:37:17.354: SSS PM [uid:40][B4728388][AAA ID:51]: RULE: Nasport = PPPoEoVLAN: slot 0 adapter 0 port 1 sub-interface 102 IP 0.0.0.0 VPI 0 VCI 0 VLAN 102

*Jan 17 14:37:17.354: SSS PM [uid:40][B4728388][AAA ID:51]: RULE: Session-Handle = 385876049 (17000051)

*Jan 17 14:37:17.354: SSS PM [uid:40][B4728388][AAA ID:51]: CONTROL-CLASS-MAP: : [0] match-all PPP

*Jan 17 14:37:17.354: SSS PM [uid:40][B4728388][AAA ID:51]: CONTROL-CLASS-MAP: : [0] match identifier protocol ppp [TRUE]

*Jan 17 14:37:17.354: SSS PM [uid:40][B4728388][AAA ID:51]: CONTROL-CLASS-MAP: : [0] match-all PPP

*Jan 17 14:37:17.354: SSS PM [uid:40][B4728388][AAA ID:51]: CONTROL-CLASS-MAP: : PPP [TRUE]

*Jan 17 14:37:17.354: SSS PM [uid:40][B4728388][AAA ID:51]: RULE: Matched "PPPOE/PPP event session-start"

*Jan 17 14:37:17.354: SSS PM [uid:40][B4728388][AAA ID:51]: RULE: Matched "PPPOE/PPP event session-start/11 collect identifier unauthenticated-domain "

*Jan 17 14:37:17.354: SSS PM [uid:40][B4728388][AAA ID:51]: RULE[0]: Start

*Jan 17 14:37:17.354: SSS PM [uid:40][B4728388][AAA ID:51]: RULE[0]: PPPOE/PPP event session-start/11 collect identifier unauthenticated-domain

*Jan 17 14:37:17.354: SSS PM [uid:40][B4728388][AAA ID:51]: SIP [PPPoE] can provide more keys

*Jan 17 14:37:17.354: SSS PM [uid:40][B4728388][AAA ID:51]: RULE[0]: Need key Unauth-Domain

*Jan 17 14:37:17.354: SSS PM [uid:40][B4728388][AAA ID:51]: RULE[1]: Start

*Jan 17 14:37:17.354: SSS PM [uid:40][B4728388][AAA ID:51]: RULE[1]: PPPOE/PPP event session-start/11 collect identifier unauthenticated-domain

*Jan 17 14:37:17.354: SSS PM [uid:40][B4728388][AAA ID:51]: Event <need keys>, State: initial-req to need-init-keys

*Jan 17 14:37:17.354: SSS PM [uid:40][B4728388][AAA ID:51]: Policy reply - Need More Keys

*Jan 17 14:37:17.354: SSS PM [uid:40][B4728388][AAA ID:51]: IDMGR: Need: Unauth-Domain

*Jan 17 14:37:17.354: SSS PM [uid:40][B4728388][AAA ID:51]: Asking client for more keys

*Jan 17 14:37:17.354: SSS PM [uid:40][B4728388][AAA ID:51]: Policy reply - Need More Keys

*Jan 17 14:37:17.355: PPP: Alloc Context [B174D034]

*Jan 17 14:37:17.355: ppp40 PPP: Phase is ESTABLISHING

*Jan 17 14:37:17.355: SSS PM: ANCP not enabled on 'Ethernet0/1.102' - not retrieving default shaper value

*Jan 17 14:37:17.355: ppp40 PPP: Using vpn set call direction

*Jan 17 14:37:17.355: ppp40 PPP: Treating connection as a callin

*Jan 17 14:37:17.355: ppp40 PPP: Session handle[8E000028] Session id[40]

*Jan 17 14:37:17.355: ppp40 LCP: Event[OPEN] State[Initial to Starting]

*Jan 17 14:37:17.355: ppp40 PPP LCP: Enter passive mode, state[Stopped]

*Jan 17 14:37:17.357: ppp40 LCP: I CONFREQ [Stopped] id 1 len 10

*Jan 17 14:37:17.357: ppp40 LCP: MagicNumber 0xBCDA70F0 (0x0506BCDA70F0)

*Jan 17 14:37:17.357: ppp40 LCP: O CONFREQ [Stopped] id 1 len 18

*Jan 17 14:37:17.357: ppp40 LCP: MRU 1492 (0x010405D4)

*Jan 17 14:37:17.357: ppp40 LCP: AuthProto PAP (0x0304C023)
*Jan 17 14:37:17.357: ppp40 LCP: MagicNumber 0x010E7131 (0x0506010E7131)
*Jan 17 14:37:17.357: ppp40 LCP: O CONFACK [Stopped] id 1 len 10
*Jan 17 14:37:17.357: ppp40 LCP: MagicNumber 0xBCDA70F0 (0x0506BCDA70F0)
*Jan 17 14:37:17.357: ppp40 LCP: Event[Receive ConfReq+] State[Stopped to ACKsent]
*Jan 17 14:37:17.357: ppp40 LCP: I CONFNAK [ACKsent] id 1 len 8
*Jan 17 14:37:17.357: ppp40 LCP: MRU 1500 (0x010405DC)
*Jan 17 14:37:17.357: ppp40 LCP: O CONFREQ [ACKsent] id 2 len 18
*Jan 17 14:37:17.357: ppp40 LCP: MRU 1500 (0x010405DC)
*Jan 17 14:37:17.357: ppp40 LCP: AuthProto PAP (0x0304C023)
*Jan 17 14:37:17.357: ppp40 LCP: MagicNumber 0x010E7131 (0x0506010E7131)
*Jan 17 14:37:17.357: ppp40 LCP: Event[Receive ConfNak/Rej] State[ACKsent to ACKsent]
*Jan 17 14:37:17.357: ppp40 LCP: I CONFACK [ACKsent] id 2 len 18
*Jan 17 14:37:17.357: ppp40 LCP: MRU 1500 (0x010405DC)
*Jan 17 14:37:17.357: ppp40 LCP: AuthProto PAP (0x0304C023)
*Jan 17 14:37:17.357: ppp40 LCP: MagicNumber 0x010E7131 (0x0506010E7131)
*Jan 17 14:37:17.357: ppp40 LCP: Event[Receive ConfAck] State[ACKsent to Open]
*Jan 17 14:37:17.361: ppp40 PPP: Phase is AUTHENTICATING, by this end
*Jan 17 14:37:17.361: ppp40 LCP: State is Open
***Jan 17 14:37:17.388: ppp40 PAP: I AUTH-REQ id 1 len 24 from "pppoe@lns.com"**
***Jan 17 14:37:17.388: ppp40 PAP: Authenticating peer pppoe@lns.com**
*Jan 17 14:37:17.388: ppp40 PPP: Phase is FORWARDING, Attempting Forward
*Jan 17 14:37:17.388: SSS PM [uid:40][B4728388][AAA ID:51]: Username key not found in set domain
key API
*Jan 17 14:37:17.388: SSS PM [uid:40][B4728388][AAA ID:51]: Client block is NULL in get client
block with handle 1D000028
*Jan 17 14:37:17.388: SSS PM [uid:40][B4728388][AAA ID:51]: Updated key list:
*Jan 17 14:37:17.388: SSS PM [uid:40][B4728388][AAA ID:51]: Access-Type = 0 (PPP)
*Jan 17 14:37:17.388: SSS PM [uid:40][B4728388][AAA ID:51]: Input Interface =
"Ethernet0/1.102"
*Jan 17 14:37:17.388: SSS PM [uid:40][B4728388][AAA ID:51]: Converted-Session = 0 (NO)
*Jan 17 14:37:17.388: SSS PM [uid:40][B4728388][AAA ID:51]: Media-Type = 1 (Ethernet)
*Jan 17 14:37:17.388: SSS PM [uid:40][B4728388][AAA ID:51]: Authen-Status = 1
(Unauthenticated)
*Jan 17 14:37:17.388: SSS PM [uid:40][B4728388][AAA ID:51]: Nasport = PPPoEoVLAN: slot 0
adapter 0 port 1 sub-interface 102 IP 0.0.0.0 VPI 0 VCI 0 VLAN 102
*Jan 17 14:37:17.388: SSS PM [uid:40][B4728388][AAA ID:51]: Session-Handle = 385876049
(17000051)
*Jan 17 14:37:17.388: SSS PM [uid:40][B4728388][AAA ID:51]: Protocol-Type = 0 (PPP Access
Protocol)
*Jan 17 14:37:17.388: SSS PM [uid:40][B4728388][AAA ID:51]: Unauth-User = "pppoe@lns.com"
*Jan 17 14:37:17.388: SSS PM [uid:40][B4728388][AAA ID:51]: Unauth-Domain = "lns.com"
*Jan 17 14:37:17.388: SSS PM [uid:40][B4728388][AAA ID:51]: SM Policy invoke - Got More Keys
*Jan 17 14:37:17.388: SSS PM [uid:40][B4728388][AAA ID:51]: Access type PPP
*Jan 17 14:37:17.388: SSS PM [uid:40][B4728388][AAA ID:51]: RULE[0]: Start
*Jan 17 14:37:17.388: SSS PM [uid:40][B4728388][AAA ID:51]: RULE[0]: PPPOE/PPP event session-
start/11 collect identifier unauthenticated-domain
*Jan 17 14:37:17.388: SSS PM [uid:40][B4728388][AAA ID:51]: State: need-init-keys to initial-req
*Jan 17 14:37:17.389: SSS PM [uid:40][B4728388][AAA ID:51]: RULE[0]: Have key Unauth-Domain
*Jan 17 14:37:17.389: SSS PM [uid:40][B4728388][AAA ID:51]: RULE[1]: Start
*Jan 17 14:37:17.389: SSS PM [uid:40][B4728388][AAA ID:51]: RULE[1]: PPPOE/PPP event session-
start/11 collect identifier unauthenticated-domain
*Jan 17 14:37:17.389: SSS PM [uid:40][B4728388][AAA ID:51]: RULE[2]: Start
*Jan 17 14:37:17.389: SSS PM [uid:40][B4728388][AAA ID:51]: RULE[2]: PPPOE/PPP event session-
start/12 service-policy type control DOMAIN
*Jan 17 14:37:17.389: SSS PM [uid:40][B4728388][AAA ID:51]: RULE: Match keys against
"DOMAIN":
*Jan 17 14:37:17.389: SSS PM [uid:40][B4728388][AAA ID:51]: RULE: Input Interface =
"Ethernet0/1.102"
*Jan 17 14:37:17.389: SSS PM [uid:40][B4728388][AAA ID:51]: RULE: Converted-Session = 0 (NO)
*Jan 17 14:37:17.389: SSS PM [uid:40][B4728388][AAA ID:51]: RULE: Media-Type = 1 (Ethernet)
*Jan 17 14:37:17.389: SSS PM [uid:40][B4728388][AAA ID:51]: RULE: Authen-Status = 1
(Unauthenticated)
*Jan 17 14:37:17.389: SSS PM [uid:40][B4728388][AAA ID:51]: RULE: Nasport = PPPoEoVLAN: slot

0 adapter 0 port 1 sub-interface 102 IP 0.0.0.0 VPI 0 VCI 0 VLAN 102

*Jan 17 14:37:17.389: SSS PM [uid:40][B4728388][AAA ID:51]: RULE: Session-Handle = 385876049 (17000051)

*Jan 17 14:37:17.389: SSS PM [uid:40][B4728388][AAA ID:51]: RULE: Protocol-Type = 0 (PPP Access Protocol)

*Jan 17 14:37:17.389: SSS PM [uid:40][B4728388][AAA ID:51]: RULE: Unauth-User = "pppoe@lns.com"

*Jan 17 14:37:17.389: SSS PM [uid:40][B4728388][AAA ID:51]: RULE: Unauth-Domain = "lns.com"

*Jan 17 14:37:17.389: SSS PM [uid:40][B4728388][AAA ID:51]: CONTROL-CLASS-MAP: : [0] match-all PPP-4-LOCAL

*Jan 17 14:37:17.389: SSS PM [uid:40][B4728388][AAA ID:51]: CONTROL-CLASS-MAP: : [0] match identifier unauthenticated-domain local.com [FALSE] [DONE]

*Jan 17 14:37:17.389: SSS PM [uid:40][B4728388][AAA ID:51]: CONTROL-CLASS-MAP: : [0] match-all PPP-4-LOCAL

*Jan 17 14:37:17.389: SSS PM [uid:40][B4728388][AAA ID:51]: CONTROL-CLASS-MAP: : PPP-4-LOCAL [FALSE]

*Jan 17 14:37:17.389: SSS PM [uid:40][B4728388][AAA ID:51]: RULE: No match "DOMAIN/PPP-4-LOCAL event session-start"

*Jan 17 14:37:17.389: SSS PM [uid:40][B4728388][AAA ID:51]: CONTROL-CLASS-MAP: : [0] match-all PPP-4-FORWARD

*Jan 17 14:37:17.389: SSS PM [uid:40][B4728388][AAA ID:51]: CONTROL-CLASS-MAP: : [0] match identifier unauthenticated-domain lns.com [TRUE]

*Jan 17 14:37:17.389: SSS PM [uid:40][B4728388][AAA ID:51]: CONTROL-CLASS-MAP: : [0] match identifier protocol ppp [TRUE]

*Jan 17 14:37:17.389: SSS PM [uid:40][B4728388][AAA ID:51]: CONTROL-CLASS-MAP: : [0] match-all PPP-4-FORWARD

*Jan 17 14:37:17.389: SSS PM [uid:40][B4728388][AAA ID:51]: CONTROL-CLASS-MAP: : PPP-4-FORWARD [TRUE]

*Jan 17 14:37:17.389: SSS PM [uid:40][B4728388][AAA ID:51]: RULE: Matched "DOMAIN/PPP-4-FORWARD event session-start"

*Jan 17 14:37:17.389: SSS PM [uid:40][B4728388][AAA ID:51]: RULE[3]: Start

*Jan 17 14:37:17.389: SSS PM [uid:40][B4728388][AAA ID:51]: RULE[3]: DOMAIN/PPP-4-FORWARD event session-start/20 authenticate aaa list AAA-4-FORWARD

*Jan 17 14:37:17.389: SSS PM [uid:40][B4728388][AAA ID:51]: SIP [PPP] can provide more keys

*Jan 17 14:37:17.389: SSS PM [uid:40][B4728388][AAA ID:51]: RULE[3]: Using AAA-Authen-Method-List AAA-4-FORWARD

*Jan 17 14:37:17.389: SSS PM [uid:40][B4728388][AAA ID:51]: RULE[3]: Need key Auth-User

*Jan 17 14:37:17.389: SSS PM [uid:40][B4728388][AAA ID:51]: RULE[4]: Start

*Jan 17 14:37:17.389: SSS PM [uid:40][B4728388][AAA ID:51]: RULE[4]: DOMAIN/PPP-4-FORWARD event session-start/20 authenticate aaa list AAA-4-FORWARD

*Jan 17 14:37:17.389: SSS PM [uid:40][B4728388][AAA ID:51]: Event <need keys>, State: initial-req to need-init-keys

*Jan 17 14:37:17.389: SSS PM [uid:40][B4728388][AAA ID:51]: Policy reply - Need More Keys

*Jan 17 14:37:17.389: SSS PM [uid:40][B4728388][AAA ID:51]: IDMGR: Need: Auth-User

*Jan 17 14:37:17.389: SSS PM [uid:40][B4728388][AAA ID:51]: IDMGR: ask for authen status

*Jan 17 14:37:17.389: SSS PM [uid:40][B4728388][AAA ID:51]: IDMGR: request, Query Session Authenticated Status

*Jan 17 14:37:17.389: SSS PM [uid:40][B4728388][AAA ID:51]: IDMGR: reply, Query Session Authenticated Status = no-record-found

*Jan 17 14:37:17.389: SSS PM [uid:40][B4728388][AAA ID:51]: IDMGR: session NOT authenticated

*Jan 17 14:37:17.389: SSS PM [uid:40][B4728388][AAA ID:51]: Event <idmgr didn't get keys>, State: need-init-keys to need-init-keys

*Jan 17 14:37:17.389: SSS PM [uid:40][B4728388][AAA ID:51]: Asking client for more keys

*Jan 17 14:37:17.389: SSS PM [uid:40][B4728388][AAA ID:51]: Policy reply - Need More Keys

*Jan 17 14:37:17.389: ppp40 PPP: Phase is AUTHENTICATING, Unauthenticated User

***Jan 17 14:37:17.389: AAA/AUTHEN/PPP (00000033): Pick method list 'AAA-4-FORWARD' <== correct method**

***Jan 17 14:37:17.389: RADIUS/ENCODE(00000033):Orig. component type = PPPoE**

***Jan 17 14:37:17.389: RADIUS: DSL line rate attributes successfully added**

*Jan 17 14:37:17.390: RADIUS(00000033): Config NAS IP: 172.17.21.6

*Jan 17 14:37:17.390: RADIUS(00000033): Config NAS IPv6: ::

*Jan 17 14:37:17.390: RADIUS/ENCODE(00000033): acct_session_id: 41

*Jan 17 14:37:17.390: RADIUS(00000033): sending

*Jan 17 14:37:17.390: RADIUS(00000033): Send Access-Request to 172.16.21.5:11645 id 1645/51, len


```

135
*Jan 17 14:37:17.390: RADIUS: authenticator 76 AF BF 7B 54 7B 38 A7 - 2A BB EF 93 CB BA 0A 45
*Jan 17 14:37:17.390: RADIUS: Framed-Protocol [7] 6 PPP [1]
*Jan 17 14:37:17.390: RADIUS: User-Name [1] 15 "pppoe@lns.com"
*Jan 17 14:37:17.390: RADIUS: User-Password [2] 18 *
*Jan 17 14:37:17.390: RADIUS: NAS-Port-Type [61] 6 Virtual [5]
*Jan 17 14:37:17.390: RADIUS: NAS-Port [5] 6 0
*Jan 17 14:37:17.390: RADIUS: NAS-Port-Id [87] 11 "0/0/1/102"
*Jan 17 14:37:17.390: RADIUS: Vendor, Cisco [26] 41
*Jan 17 14:37:17.390: RADIUS: Cisco AVpair [1] 35 "client-mac-address=aabb.cc00.d210"
*Jan 17 14:37:17.390: RADIUS: Service-Type [6] 6 Framed [2]
*Jan 17 14:37:17.390: RADIUS: NAS-IP-Address [4] 6 172.17.21.6 <=== Correct NAS
(source ip)
*Jan 17 14:37:17.390: RADIUS(00000033): Sending a IPv4 Radius Packet
*Jan 17 14:37:17.390: RADIUS(00000033): Started 5 sec timeout
*Jan 17 14:37:17.391: RADIUS: Received from id 1645/51 172.16.21.5:11645, Access-Accept, len 105
*Jan 17 14:37:17.391: RADIUS: authenticator 3C 38 A2 16 EA 26 BE 4A - FD 69 49 CA E5 69 E7 04
*Jan 17 14:37:17.391: RADIUS: Service-Type [6] 6 Outbound [5]
*Jan 17 14:37:17.391: RADIUS: Tunnel-Type [64] 6 00:L2TP [3]
*Jan 17 14:37:17.391: RADIUS: Framed-Protocol [7] 6 PPP [1]
*Jan 17 14:37:17.391: RADIUS: Tunnel-Medium-Type [65] 6 00:IPv4 [1]
*Jan 17 14:37:17.391: RADIUS: Tunnel-Client-Auth-I[90] 16 "lac-via-radius"
*Jan 17 14:37:17.391: RADIUS: Tunnel-Password [69] 21 00:*
*Jan 17 14:37:17.391: RADIUS: Tunnel-Server-Endpoi[67] 12 "172.19.1.1"
*Jan 17 14:37:17.391: RADIUS: Tunnel-Client-Endpoi[66] 12 "172.19.1.2"
*Jan 17 14:37:17.391: RADIUS(00000033): Received from id 1645/51
*Jan 17 14:37:17.391: ppp40 PPP: Phase is FORWARDING, Attempting Forward
*Jan 17 14:37:17.391: SSS PM [uid:40][B4728388][AAA ID:51]: Authen status update; is now
"authen"
*Jan 17 14:37:17.391: SSS PM [uid:40][B4728388][AAA ID:51]: IDMGR: assert authen status "authen"
*Jan 17 14:37:17.391: SSS PM [uid:40][B4728388][AAA ID:51]: IDMGR: send event Session Update
*Jan 17 14:37:17.391: SSS PM [uid:40][B4728388][AAA ID:51]: IDMGR: with username
"pppoe@lns.com"
*Jan 17 14:37:17.391: SSS PM [uid:40][B4728388][AAA ID:51]: Session activation: ok
*Jan 17 14:37:17.391: SSS PM [uid:40][B4728388][AAA ID:51]: Client block is NULL in get client
block with handle 1D000028
*Jan 17 14:37:17.391: SSS PM [uid:40][B4728388][AAA ID:51]: Updated key list:
*Jan 17 14:37:17.392: SSS PM [uid:40][B4728388][AAA ID:51]: AAA-Attr-List = F50003F4
*Jan 17 14:37:17.392: SSS PM [uid:40][B4728388][AAA ID:51]: service-type 0 5
[Outbound]
*Jan 17 14:37:17.392: SSS PM [uid:40][B4728388][AAA ID:51]: tunnel-type 0 3
[l2tp]
*Jan 17 14:37:17.392: SSS PM [uid:40][B4728388][AAA ID:51]: Framed-Protocol 0 1 [PPP]
*Jan 17 14:37:17.392: SSS PM [uid:40][B4728388][AAA ID:51]: tunnel-medium-type 0 1
[IPv4]
*Jan 17 14:37:17.392: SSS PM [uid:40][B4728388][AAA ID:51]: tunnel-id 0 "lac-
via-radius"
*Jan 17 14:37:17.392: SSS PM [uid:40][B4728388][AAA ID:51]: tunnel-password 0
<hidden>
*Jan 17 14:37:17.392: SSS PM [uid:40][B4728388][AAA ID:51]: tunnel-server-endpoi 0
"172.19.1.1"
*Jan 17 14:37:17.392: SSS PM [uid:40][B4728388][AAA ID:51]: tunnel-client-endpoi 0
"172.19.1.2"
*Jan 17 14:37:17.392: SSS PM [uid:40][B4728388][AAA ID:51]: Access-Type = 0 (PPP)
*Jan 17 14:37:17.392: SSS PM [uid:40][B4728388][AAA ID:51]: Unauth-User = "pppoe@lns.com"
*Jan 17 14:37:17.392: SSS PM [uid:40][B4728388][AAA ID:51]: Unauth-Domain = "lns.com"
*Jan 17 14:37:17.392: SSS PM [uid:40][B4728388][AAA ID:51]: Input Interface =
"Ethernet0/1.102"
*Jan 17 14:37:17.392: SSS PM [uid:40][B4728388][AAA ID:51]: Converted-Session = 0 (NO)
*Jan 17 14:37:17.392: SSS PM [uid:40][B4728388][AAA ID:51]: Media-Type = 1 (Ethernet)
*Jan 17 14:37:17.392: SSS PM [uid:40][B4728388][AAA ID:51]: Authen-Status = 0 (Authenticated)
*Jan 17 14:37:17.392: SSS PM [uid:40][B4728388][AAA ID:51]: Nasport = PPPoEoVLAN: slot 0
adapter 0 port 1 sub-interface 102 IP 0.0.0.0 VPI 0 VCI 0 VLAN 102
*Jan 17 14:37:17.392: SSS PM [uid:40][B4728388][AAA ID:51]: Session-Handle = 385876049

```

(17000051)

```
*Jan 17 14:37:17.392: SSS PM [uid:40][B4728388][AAA ID:51]: AAA-Authen-Method-List = "AAA-4-FORWARD"
*Jan 17 14:37:17.392: SSS PM [uid:40][B4728388][AAA ID:51]: Protocol-Type = 0 (PPP Access Protocol)
*Jan 17 14:37:17.392: SSS PM [uid:40][B4728388][AAA ID:51]: Final = 1 (YES)
*Jan 17 14:37:17.392: SSS PM [uid:40][B4728388][AAA ID:51]: Auth-User = "pppoe@lns.com"
*Jan 17 14:37:17.392: SSS PM [uid:40][B4728388][AAA ID:51]: Auth-Domain = "lns.com"
*Jan 17 14:37:17.392: SSS PM [uid:40][B4728388][AAA ID:51]: SM Policy invoke - Got More Keys
*Jan 17 14:37:17.392: SSS PM [uid:40][B4728388][AAA ID:51]: Access type PPP: final key
*Jan 17 14:37:17.392: SSS PM [uid:40][B4728388][AAA ID:51]: Must apply config before continuing
*Jan 17 14:37:17.392: SSS PM [uid:40][B4728388][AAA ID:51]: Handling Config Request from Client
*Jan 17 14:37:17.392: SSS PM [uid:40][B4728388][AAA ID:51]: Event <got process config req>, State: need-init-keys to need-init-keys
*Jan 17 14:37:17.392: SSS PM [uid:40][B4728388][AAA ID:51]: Handling Process Config
*Jan 17 14:37:17.392: SSS PM [uid:40][B4728388][AAA ID:51]: Apply config request set to AAA list
Config: service-type 0 5 [Outbound]
Config: tunnel-type 0 3 [l2tp]
Config: Framed-Protocol 0 1 [PPP]
Config: tunnel-medium-type 0 1 [IPv4]
Config: tunnel-id 0 "lac-via-radius"
Config: tunnel-password 0 <hidden>
Config: tunnel-server-endpoi 0 "172.19.1.1"
Config: tunnel-client-endpoi 0 "172.19.1.2"
*Jan 17 14:37:17.392: SSS PM [uid:40][B4728388][AAA ID:51]: Sending pppoe@lns.com request to AAA
*Jan 17 14:37:17.392: SSS PM [uid:40][B4728388][AAA ID:51]: SSS PM: Allocating per-user profile info
*Jan 17 14:37:17.392: SSS PM [uid:40][B4728388][AAA ID:51]: SSS PM: Add per-user profile info to policy context
*Jan 17 14:37:17.392: SSS AAA AUTHOR [uid:40][AAA ID:51]: Root SIP PPPoE
*Jan 17 14:37:17.392: SSS AAA AUTHOR [uid:40][AAA ID:51]: Enable PPPoE parsing
*Jan 17 14:37:17.392: SSS AAA AUTHOR [uid:40][AAA ID:51]: Enable PPP parsing
*Jan 17 14:37:17.392: SSS PM [uid:40][B4728388][AAA ID:51]: ACTIVE HANDLE[0]: Snapshot captured in Active context
*Jan 17 14:37:17.392: SSS PM [uid:40][B4728388][AAA ID:51]: ACTIVE HANDLE[0]: Active context created
*Jan 17 14:37:17.392: SSS AAA AUTHOR [uid:40][AAA ID:51]: Event <make request>, state changed from idle to authorizing
*Jan 17 14:37:17.392: SSS AAA AUTHOR [uid:40][AAA ID:51]: Active key set to Auth-User
*Jan 17 14:37:17.392: SSS AAA AUTHOR [uid:40][AAA ID:51]: Authorizing key pppoe@lns.com
*Jan 17 14:37:17.392: SSS AAA AUTHOR [uid:40][AAA ID:51]: Spoofed AAA reply sent for key pppoe@lns.com
*Jan 17 14:37:17.392: SSS AAA AUTHOR [uid:40][AAA ID:51]: Received an AAA pass
*Jan 17 14:37:17.392: SSS AAA AUTHOR [uid:40][AAA ID:51]: [B4728388]:Reply message not exist
Initial attr service-type 0 5 [Outbound]
Initial attr tunnel-type 0 3 [l2tp]
Initial attr Framed-Protocol 0 1 [PPP]
Initial attr tunnel-medium-type 0 1 [IPv4]
Initial attr tunnel-id 0 "lac-via-radius"
Initial attr tunnel-password 0 <hidden>
Initial attr tunnel-server-endpoi 0 "172.19.1.1"
Initial attr tunnel-client-endpoi 0 "172.19.1.2"
*Jan 17 14:37:17.392: SSS PM [uid:40][B4728388][AAA ID:51]: policy key list doesn't have IPv4 address
*Jan 17 14:37:17.392: SSS PM: PARAMETERIZED-QoS: QoS parameters
*Jan 17 14:37:17.392: SSS PM [uid:40][B4728388][AAA ID:51]: RULE: VRF Parsing routine:
service-type 0 5 [Outbound]
tunnel-type 0 3 [l2tp]
Framed-Protocol 0 1 [PPP]
tunnel-medium-type 0 1 [IPv4]
tunnel-id 0 "lac-via-radius"
tunnel-password 0 <hidden>
tunnel-server-endpoi 0 "172.19.1.1"
tunnel-client-endpoi 0 "172.19.1.2"
```

*Jan 17 14:37:17.392: SSS AAA AUTHOR [uid:40][AAA ID:51]: Parsed service; VPDN
*Jan 17 14:37:17.393: SSS AAA AUTHOR [uid:40][AAA ID:51]: SIP PPP[A4700F0] parsed as Success
*Jan 17 14:37:17.393: SSS AAA AUTHOR [uid:40][AAA ID:51]: SIP PPP[B009900] parsed as Ignore
*Jan 17 14:37:17.393: SSS AAA AUTHOR [uid:40][AAA ID:51]: SIP PPPoE[A501AC0] parsed as Success
*Jan 17 14:37:17.393: SSS AAA AUTHOR [uid:40][AAA ID:51]: Event <found service>, state changed
from authorizing to complete
*Jan 17 14:37:17.393: SSS AAA AUTHOR [uid:40][AAA ID:51]: Found service info for key
pppoe@lns.com
*Jan 17 14:37:17.393: SSS AAA AUTHOR [uid:40][AAA ID:51]: Active Handle present - FB000007
*Jan 17 14:37:17.393: SSS PM [uid:40][B4728388][AAA ID:51]: Apply config handle [750003F8] now
set to [180003FE]
*Jan 17 14:37:17.393: SSS PM [uid:40][B4728388][AAA ID:51]: ACTIVE HANDLE[0]: Snapshot reverted
from Active context to policy context
*Jan 17 14:37:17.393: SSS AAA AUTHOR [uid:40][AAA ID:51]: Freeing Active Handle; SSS Policy
Context Handle = 1D000028
*Jan 17 14:37:17.393: SSS PM [uid:40][B4728388][AAA ID:51]: ACTIVE HANDLE[2829]: Released active
handle
*Jan 17 14:37:17.393: SSS AAA AUTHOR [uid:40][AAA ID:51]: PM directive AAA:VPDN maps to
PM:Forwarding
*Jan 17 14:37:17.393: SSS PM [uid:40][B4728388][AAA ID:51]: PROFILE: store profile
"pppoe@lns.com"
*Jan 17 14:37:17.393: SSS PM: PROFILE-DB: is profile "pppoe@lns.com" in DB
*Jan 17 14:37:17.393: SSS PM: PROFILE-DB: Computed hash value = 2347614612
*Jan 17 14:37:17.393: SSS PM: PROFILE-DB: No, add new list
*Jan 17 14:37:17.393: SSS PM: PROFILE-DB: create "pppoe@lns.com"
*Jan 17 14:37:17.393: SSS PM: PROFILE-DB: create "pppoe@lns.com"/B48191D8 hdl 4D000400 ref 1
*Jan 17 14:37:17.393: SSS PM [uid:40][B4728388][AAA ID:51]: PROFILE: create B481B924, ref 1
*Jan 17 14:37:17.393: SSS AAA AUTHOR [uid:40][AAA ID:51]: Event <free request>, state changed
from complete to terminal
*Jan 17 14:37:17.393: SSS AAA AUTHOR [uid:40][AAA ID:51]: Cancel request
*Jan 17 14:37:17.393: SSS PM [uid:40][B4728388][AAA ID:51]: Handling Author Found Event
*Jan 17 14:37:17.393: SSS PM [uid:40][B4728388][AAA ID:51]: Plumbing proposed by FSP
*Jan 17 14:37:17.393: SSS PM [uid:40][B4728388][AAA ID:51]: Policy reply - Forwarding
*Jan 17 14:37:17.393: SSS PM [uid:40][B4728388][AAA ID:51]: FSP info: B45F7020/VPDN data:
B460E1C8 SVM: 00000000
*Jan 17 14:37:17.393: SSS PM [uid:40][B4728388][AAA ID:51]: Apply of config finished; provide
the found network service
*Jan 17 14:37:17.393: SSS PM [uid:40][B4728388][AAA ID:51]: Network service found; continuing
rule
*Jan 17 14:37:17.393: SSS PM [uid:40][B4728388][AAA ID:51]: RULE[0]: Continue
*Jan 17 14:37:17.393: SSS PM [uid:40][B4728388][AAA ID:51]: RULE[0]: DOMAIN/PPP-4-FORWARD event
session-start/20 authenticate aaa list AAA-4-FORWARD
*Jan 17 14:37:17.393: SSS PM [uid:40][B4728388][AAA ID:51]: RULE[0]: Run action with no altered
name
*Jan 17 14:37:17.393: SSS PM [uid:40][B4728388][AAA ID:51]: State: need-init-keys to initial-req
*Jan 17 14:37:17.393: SSS PM [uid:40][B4728388][AAA ID:51]: RULE[0]: Have key Auth-User
*Jan 17 14:37:17.393: SSS PM [uid:40][B4728388][AAA ID:51]: RULE[1]: Continue
*Jan 17 14:37:17.393: SSS PM [uid:40][B4728388][AAA ID:51]: RULE[1]: DOMAIN/PPP-4-FORWARD event
session-start/20 authenticate aaa list AAA-4-FORWARD
*Jan 17 14:37:17.393: SSS PM [uid:40][B4728388][AAA ID:51]: RULE[1]: Back to parent rule
*Jan 17 14:37:17.393: SSS PM [uid:40][B4728388][AAA ID:51]: RULE[1]: Run next parent action
*Jan 17 14:37:17.393: SSS PM [uid:40][B4728388][AAA ID:51]: RULE[2]: Continue
*Jan 17 14:37:17.393: SSS PM [uid:40][B4728388][AAA ID:51]: RULE[2]: PPPOE/PPP event session-
start/12 service-policy type control DOMAIN
*Jan 17 14:37:17.393: SSS PM [uid:40][B4728388][AAA ID:51]: Client block is NULL in get client
block with handle 1D000028
*Jan 17 14:37:17.393: SSS PM [uid:40][B4728388][AAA ID:51]: RULE[2]: No more actions to run
*Jan 17 14:37:17.393: SSS PM [uid:40][B4728388][AAA ID:51]: RULE[3]: Continue
*Jan 17 14:37:17.393: SSS PM [uid:40][B4728388][AAA ID:51]: RULE[3]: PPPOE/PPP event session-
start/12 service-policy type control DOMAIN
*Jan 17 14:37:17.393: SSS PM [uid:40][B4728388][AAA ID:51]: RULE[3]: Using previously offered
directive Forwarding
*Jan 17 14:37:17.393: SSS PM [uid:40][B4728388][AAA ID:51]: RULE[4]: Continue
*Jan 17 14:37:17.393: SSS PM [uid:40][B4728388][AAA ID:51]: RULE[4]: PPPOE/PPP event session-

```
start/12 service-policy type control DOMAIN
*Jan 17 14:37:17.393: SSS PM [uid:40][B4728388][AAA ID:51]: Client block is NULL in get client
block with handle 1D000028
*Jan 17 14:37:17.393: SSS PM [uid:40][B4728388][AAA ID:51]: Event <srvf found>, State: initial-
req to wait-for-events
*Jan 17 14:37:17.393: SSS PM [uid:40][B4728388][AAA ID:51]: Handling Service Direction
*Jan 17 14:37:17.393: SSS PM [uid:40][B4728388][AAA ID:51]: Policy reply - Forwarding
*Jan 17 14:37:17.393: SSS PM [uid:40][B4728388][AAA ID:51]: Plumbing proposed by FSP
*Jan 17 14:37:17.393: SSS PM [uid:40][B4728388][AAA ID:51]: Policy reply - Forwarding
*Jan 17 14:37:17.393: SSS PM [uid:40][B4728388][AAA ID:51]: RULE: Looking for a rule for event
session-service-found
*Jan 17 14:37:17.393: SSS PM [uid:40][B4728388][AAA ID:51]: RULE: Intf CloneSrc Vt2: service-
rule any: PPPOE
*Jan 17 14:37:17.393: SSS PM [uid:40][B4728388][AAA ID:51]: RULE: Evaluate "PPPOE" for
session-service-found
*Jan 17 14:37:17.393: SSS PM [uid:40][B4728388][AAA ID:51]: RULE: Not matched "PPPOE/PPP
event session-start"
*Jan 17 14:37:17.393: SSS PM [uid:40][B4728388][AAA ID:51]: RULE: No match for "PPPOE"
*Jan 17 14:37:17.393: SSS PM [uid:40][B4728388][AAA ID:51]: RULE: Intf InputI/f Et0/1.102:
service-rule any: None
*Jan 17 14:37:17.393: SSS PM [uid:40][B4728388][AAA ID:51]: RULE: Glob: service-rule any: None
*Jan 17 14:37:17.393: SSS PM: ANCP not enabled on 'Ethernet0/1.102' - not retrieving default
shaper value
*Jan 17 14:37:17.393: SSS PM: ANCP not enabled on 'Ethernet0/1.102' - not retrieving default
shaper value
*Jan 17 14:37:17.394: ppp40 PPP: No AAA accounting method list
*Jan 17 14:37:17.397: SSS PM: ANCP not enabled on 'Ethernet0/1.102' - not retrieving default
shaper value
*Jan 17 14:37:17.397: SSS PM: ANCP not enabled on 'Ethernet0/1.102' - not retrieving default
shaper value
*Jan 17 14:37:17.397: SSS PM [uid:40][B4728388][AAA ID:51]: SM Policy invoke - Apply Config
Success
*Jan 17 14:37:17.397: SSS PM [uid:40][B4728388][AAA ID:51]: [PARAMETERIZED-QoS]: No rabapol
context created yet for handle [1D000028], returning compatible
*Jan 17 14:37:17.397: SSS PM [uid:40][B4728388][AAA ID:51]: Event <got apply config success>,
State: wait-for-events to wait-for-events
*Jan 17 14:37:17.397: SSS PM [uid:40][B4728388][AAA ID:51]: Handling Apply Config; SUCCESS
*Jan 17 14:37:17.397: SSS PM [uid:40][B4728388][AAA ID:51]: session start done
*Jan 17 14:37:17.397: SSS PM [uid:40][B4728388][AAA ID:51]: Removed attribute list just
processed
*Jan 17 14:37:17.397: SSS PM [uid:40][B4728388][AAA ID:51]: no callback for callback north
*Jan 17 14:37:17.397: SSS PM [uid:40][B4728388][AAA ID:51]: Client block is NULL in get client
block with handle 1D000028
*Jan 17 14:37:17.397: SSS PM [uid:40][B4728388][AAA ID:51]: Null client block; Can't update RP
*Jan 17 14:37:17.397: SSS PM [uid:40][B4728388][AAA ID:51]: Client block is NULL in get client
block with handle 1D000028
*Jan 17 14:37:17.397: SSS PM [uid:40][B4728388][AAA ID:51]: No pending events to process
*Jan 17 14:37:17.397: SSS PM [uid:40][B4728388][AAA ID:51]: No pending eventstst
*Jan 17 14:37:17.397: ppp40 PPP: Phase is FORWARDED, Session Forwarded
```