

# WLC 5760/3850 ىلج بيولا رورم ةملك نيوكت

## المحتويات

[المقدمة](#)

[المتطلبات الأساسية](#)

[المتطلبات](#)

[المكونات المستخدمة](#)

[مرور الويب على وحدات التحكم في الشبكة المحلية \(LAN\) اللاسلكية](#)

[التكوين](#)

[التكوين باستخدام CLI \(واجهة سطر الأوامر\)](#)

[التكوين باستخدام واجهة المستخدم الرسومية \(GUI\)](#)

[مثال العميل](#)

[التحقق من الصحة](#)

[استكشاف الأخطاء وإصلاحها](#)

## المقدمة

يوضح هذا المستند كيفية تكوين ميزة مرور الويب على وحدة تحكم شبكة محلية لاسلكية (WLC).

## المتطلبات الأساسية

### المتطلبات

يفترض هذا المستند أن المكونات الأولية قد اكتملت بالفعل على عنصر التحكم في الشبكة المحلية اللاسلكية (WLC).

### المكونات المستخدمة

تستند المعلومات الواردة في هذا المستند إلى إصدارات البرامج والمكونات المادية التالية:

• WLC 5760 A أن يركض صيغة 3.3 رمز

• نقطة وصول خفيفة الوزن للسلسلة Cisco Aironet 3600 Series

• نظام التشغيل Microsoft Windows 7 Native Wireless Solution

تم إنشاء المعلومات الواردة في هذا المستند من الأجهزة الموجودة في بيئة معملية خاصة. بدأت جميع الأجهزة المستخدمة في هذا المستند بتكوين ممسوح (افتراضي). إذا كانت شبكتك مباشرة، فتأكد من فهمك للتأثير المحتمل لأي أمر.

## مرور الويب على وحدات التحكم في الشبكة المحلية (LAN) اللاسلكية

مرور الويب هو حل يتم استخدامه عادة للوصول إلى الضيوف. عملية مرور الويب مماثلة لعملية مصادقة الويب، إلا أنه لا يتطلب أي بيانات اعتماد للمصادقة من أجل مرور الويب.

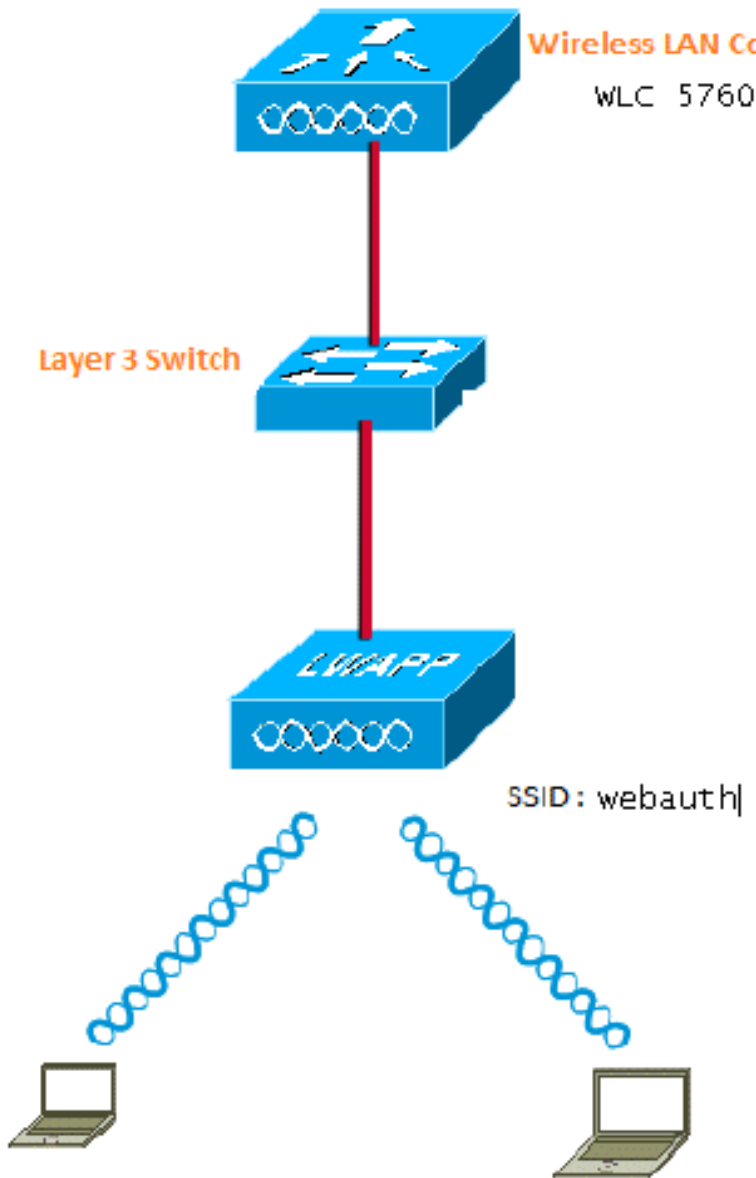
في مرور الويب، تتم إعادة توجيه المستخدمين اللاسلكيين إلى صفحة نهج الاستخدام عند محاولتهم استخدام الإنترنت لأول مرة. بمجرد قبول المستخدمين للنهج، يمكنهم استعراض الإنترنت. تتم معالجة عملية إعادة التوجيه هذه إلى صفحة السياسة بواسطة عنصر التحكم في الشبكة المحلية اللاسلكية (WLC).

في هذا المثال، يتم إنشاء واجهة شبكة VLAN على شبكة فرعية منفصلة على عنصر التحكم في الشبكة المحلية اللاسلكية (WLC). بعد ذلك، يتم إنشاء معرف مجموعة الخدمة (SSID)/شبكة محلية لاسلكية منفصلة (WLAN) وتكوينه باستخدام كلمة مرور ويب، وتخصيصه لواجهة شبكة VLAN هذه.

ملاحظة: لا يوفر المرور عبر الويب أي تشفير للبيانات.

## التكوين

هنا الرسم التخطيطي للشبكة:



أنت تستطيع أتمت هذا تشكيل مع ال CLI أو ال gui.

## التكوين باستخدام CLI (واجهة سطر الأوامر)

شكلت DHCP يتطفل ل VLANs أن أنت تستعمل لزبون. في هذا المثال، يتم استخدام شبكة VLAN20 للعملاء. تم تكوين التجمع على عنصر التحكم في الشبكة المحلية اللاسلكية (WLC) نفسه.

يتصل TenGigabitEthernet1/0/1 من WLC 5760 بمحول الوصلة. إذا كان لديك خادم DHCP الذي تم تكوينه على الخادم خارج عنصر التحكم في الشبكة المحلية اللاسلكية (WLC) أو على خادم DHCP خارجي، فيجب عليك الوثوق في معلومات التطفل على بروتوكول DHCP وترجيلها.

```

ip device tracking
ip dhcp snooping vlan 12,20,30,40
ip dhcp snooping
!
ip dhcp pool vlan20
network 20.20.20.0 255.255.255.0

```

```
default-router 20.20.20.1

interface Vlan20
ip address 20.20.20.1 255.255.255.0

interface TenGigabitEthernet1/0/1
switchport trunk native vlan 12
switchport mode trunk
ip dhcp relay information trusted
ip dhcp snooping trust

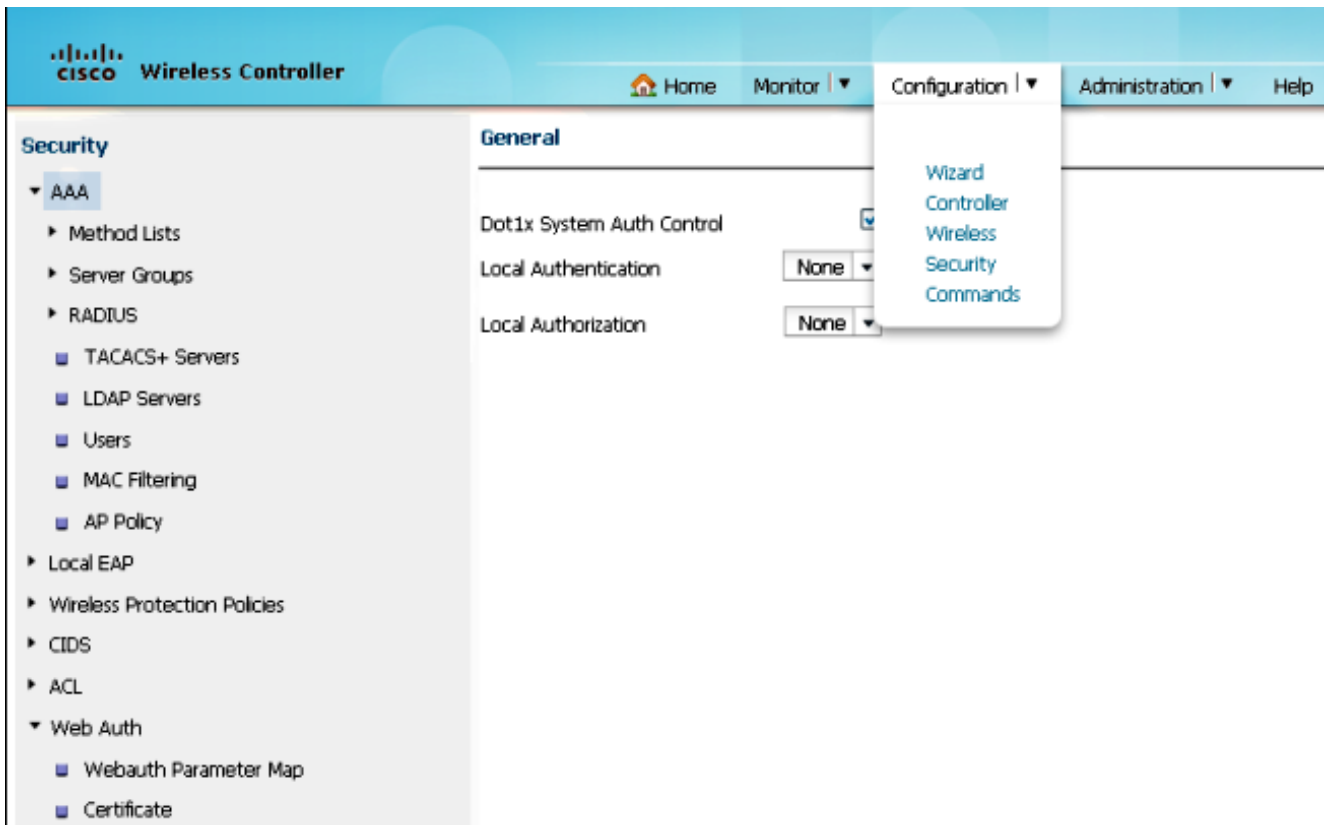
parameter-map type webauth global
type consent
virtual-ip ipv4 192.168.200.1
!
!
parameter-map type webauth web
type consent

wlan Webauth 9 Webauth
client vlan VLAN0020
no security wpa
no security wpa akm dot1x
no security wpa wpa2
no security wpa wpa2 ciphers aes
security web-auth
security web-auth parameter-map web
session-timeout 1800
```

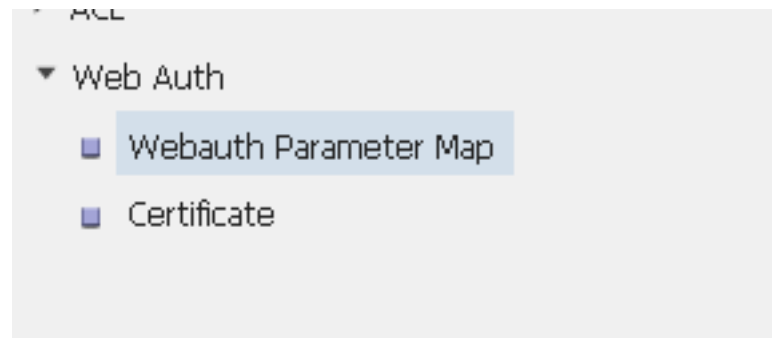
## التكوين باستخدام واجهة المستخدم الرسومية (GUI)

أتمت هذا steps in order to شكلت على ال gui.

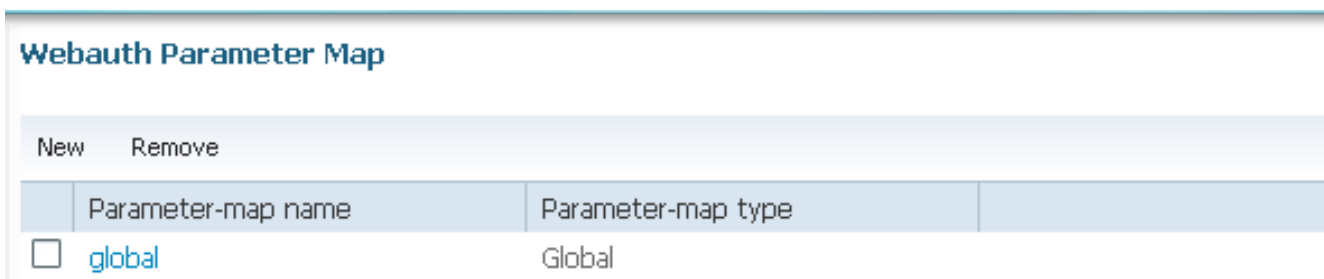
من واجهة المستخدم الرسومية (GUI) عنصر التحكم في الشبكة المحلية اللاسلكية (WLC)، انتقل إلى التكوين.  
< الأمان:



2. في أسفل يمين صفحة الأمان، انتقل إلى WebAuth < خريطة معلمات WebAuth:



3. اختر عمومي لخريطة المعلمة الافتراضية:




انتقل إلى خريطة معلمة WebAuth < تحرير لتكوين عنوان IP الظاهري. هو 192.169.200.1 في هذا المثال. قم بتغيير النوع إلى الموافقة، بحيث تصبح المعلمة العمومية موافقة (مرور ويب).

ملاحظة: ليس إلزاميا تكوين خريطة المعلمة العامة للموافقة.

## Webauth Parameter Map


Webauth Parameter Map > Edit

Parameter-map name	global
Banner	
Maximum HTTP connections(1-200)	<input type="text" value="30"/>
Timeout (1-65535 in minutes)	<input type="text" value="2"/>
Type	<input type="text" value="consent"/>
Turn-on Consent with Email	<input type="checkbox"/>
Virtual IPv4 Address	<input type="text" value="192.168.200.1"/>
Virtual IPv4 hostname	<input type="text"/>

قم بإنشاء خريطة المعلمة، واختر الموافقة للنوع. يستخدم هذا المثال الويب كاسم خريطة المعلمة، والذي يتم استخدامه أسفل الشبكة المحلية اللاسلكية (WLAN) للمستخدمين للوصول إلى صفحة الموافقة.

## Webauth Parameter Map

Webauth Parameter Map > Edit

Parameter-map name	web
Banner	
Maximum HTTP connections(1-200)	<input type="text" value="30"/>
Timeout (1-65535 in minutes)	<input type="text" value="2"/>
Type	<input type="text" value="consent"/>
Turn-on Consent with Email	<input type="checkbox"/>

هنا إلتقاط شاشة من المعلم خريطة على ال gui:

## Webauth Parameter Map

New	Remove		
	Parameter-map name	Parameter-map type	
<input type="checkbox"/>	global	Global	
<input type="checkbox"/>	web	Named	

من واجهة المستخدم الرسومية (GUI) عنصر التحكم في الشبكة المحلية اللاسلكية (WLC)، انتقل إلى التكوين > لاسلكي > WLAN لإنشاء شبكة WLAN جديدة. يحتوي هذا المثال على WebAuth كالشبكة المحلية اللاسلكية (WLAN) التي تم تعيينها على VLAN20:

**WLAN**  
WLAN > Edit

General Security QOS AVC Advanced

Profile Name: Webauth  
Type: WLAN  
SSID: Webauth  
Status:   
Security Policies: Web-Auth  
(Modifications done under security tab will appear after applying the changes.)  
Radio Policy: All  
Interface/Interface Group(G): VLAN0020  
Broadcast SSID:   
Multicast VLAN Feature:

انتقل إلى شبكة WLAN > تحرير > التأمين > الطبقة 2، وحدد لا شيء لتأمين الطبقة 2: 7.

**WLAN**  
WLAN > Edit

General Security QOS AVC Advanced

Layer2 Layer3 AAA Server

Layer 2 Security

MAC Filtering

Fast Transition

Over the DS

Reassociation Timeout

8. انتقل إلى شبكة WLAN > Edit (تحرير) < الأمان > الطبقة 3، واختر الإعداد المناسب لمخطط معلمات WebAuth. في هذا المثال، هو الويب.

**WLAN**  
WLAN > Edit

General Security QOS AVC Advanced

Layer2 Layer3 AAA Server

Web Policy

Conditional Web Redirect

Webauth Profile

Webauth Parameter Map

Webauth On-mac-filter Failure

Preauthentication IPv4 ACL

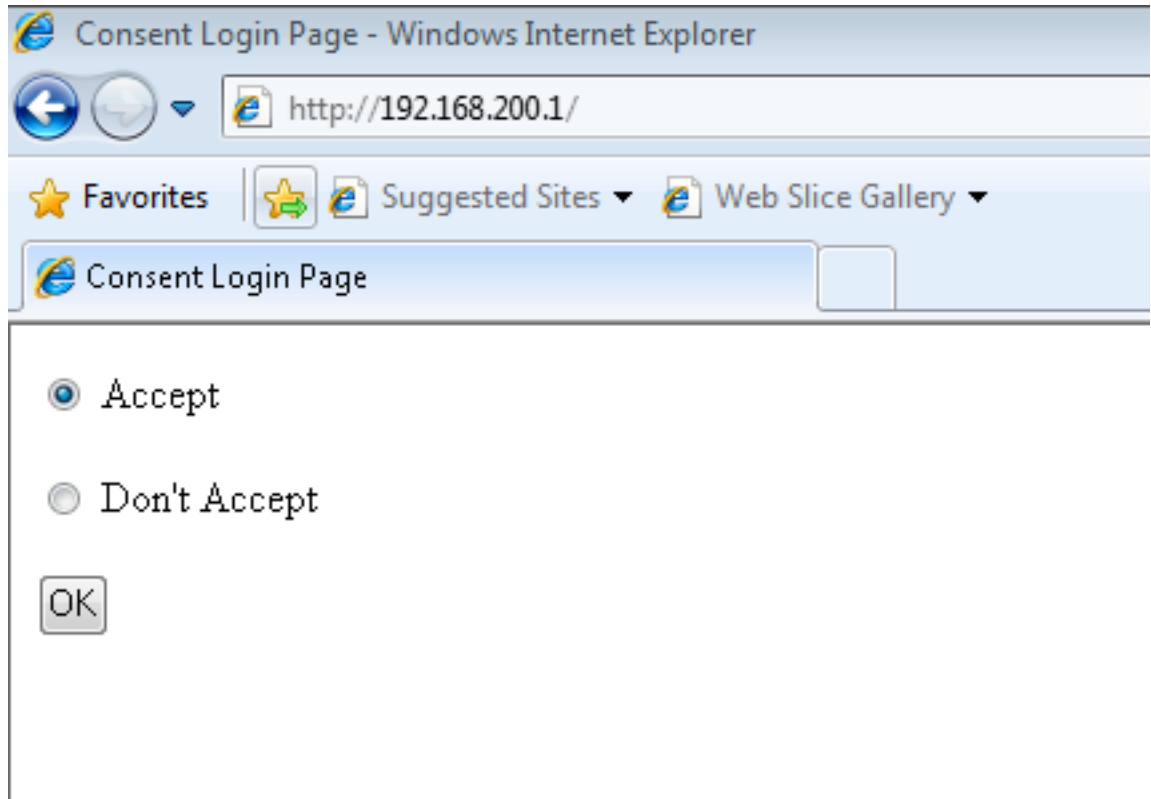
Preauthentication IPv6 ACL

9. قم بحفظ التكوين، وهو جاهز للاختبار.

10. بعد الاتصال بالشبكة المحلية اللاسلكية (WLAN)، يستقبل العميل عنوان IP. عندما تحاول فتح المستعرض باستخدام عنوان IP الظاهري، تظهر صفحة تسجيل الدخول بالموافقة، ويجب عليك النقر فوق الزر قبول الاختيار.

ملاحظة: إذا كان لديك تكوين خادم اسم المجال (DNS) الصحيح، فلن تحتاج إلى إدخال عنوان IP الظاهري يدويًا على المستعرض.





11. بمجرد النقر فوق **قبول**، يتم تشغيل صفحة المصادقة الناجحة، مما يوفر لك خيار الانتقال إلى الصفحة المطلوبة.

Consent Login Page - Windows Internet Explorer

http://192.168.200.1/

Favorites Suggested Sites Web Slice Gallery

Consent Login


Accept

Don't Accept

OK

Certificate Error: Navigation Blocked - Wi...

https://192.168.200.1/

 There is a problem with this webpage.

The security certificate presented by this webpage is not trusted.

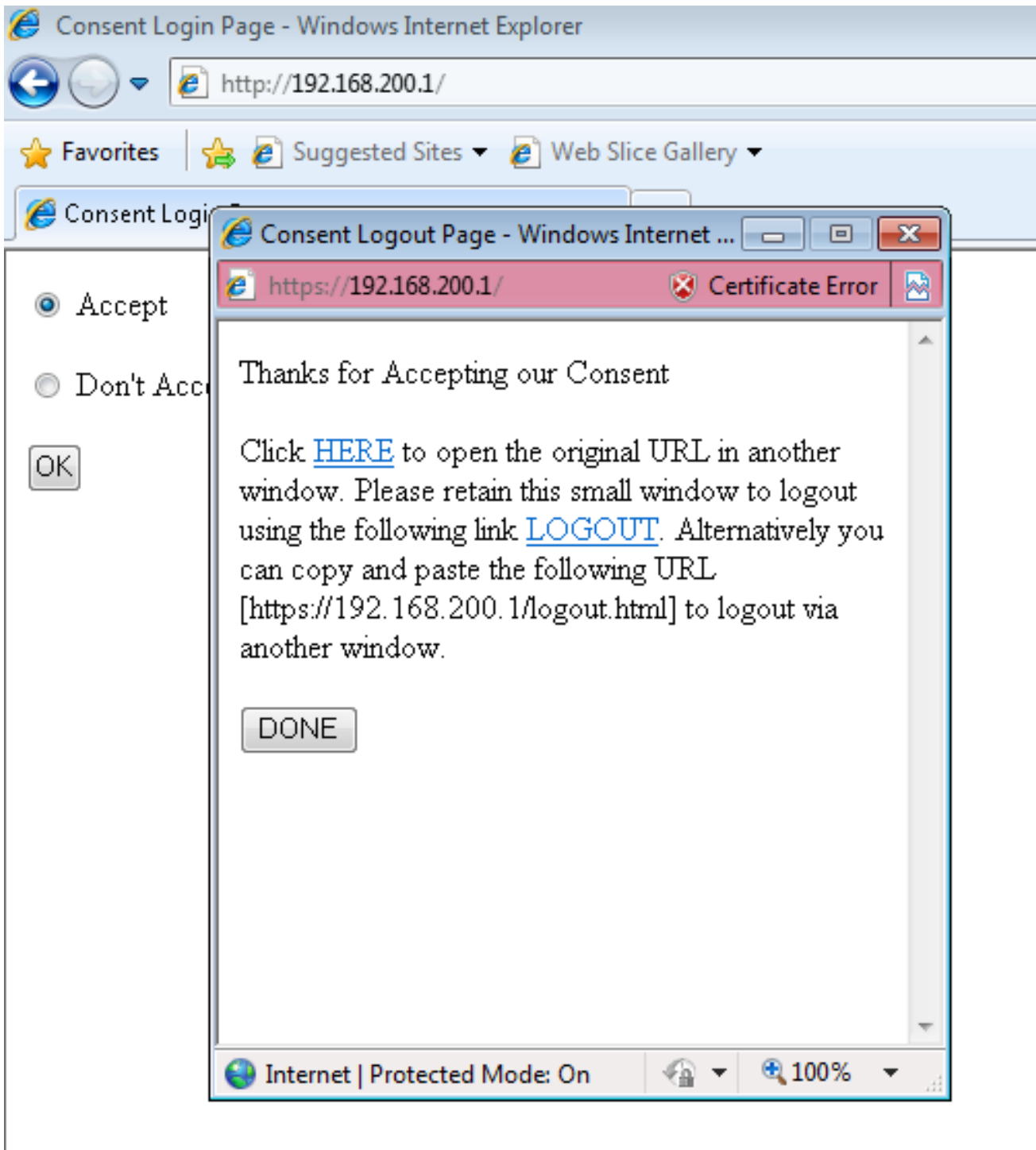
The security certificate presented by this webpage is not trusted.

Security certificate problems may indicate a security problem with the server.

**We recommend that you close this webpage.**

- Click here to close this webpage.
- Continue to this website (not recommended)
- More information

Internet | Protected Mode: On 100%



## مثال العميل

فيما يلي التقاط الحزمة من كمبيوتر محمول العميل عندما يستقبل العميل بروتوكول DHCP:

No.	Time	Source	Destination	Protocol	Length	Source Port	Destination Port	Info
1	09:35:55.540590000	0.0.0.0	255.255.255.255	DHCP	346	68	67	DHCP Request - Transaction ID 0xd73023c4
2	09:35:55.548600000	20.20.20.1	20.20.20.6	DHCP	342	67	68	DHCP ACK - Transaction ID 0xd73023c4

بعد أن يستلم العميل عنوان IP، يفتح العميل المستعرض ويصنف عنوان IP الظاهري.

ملاحظة: إذا تم تكوين DNS بشكل صحيح، فلن تحتاج إلى إدخال عنوان IP الظاهري على المستعرض.

162	09:36:09.57004000	20.20.20.6	20.20.20.255	BROWSER	220	138	138	Request Announcement CALO-PC
163	09:36:09.680160000	20.20.20.6	192.168.200.1	TCP	66		50128	> http [SYN] Seq=0 Wln=8192 Len=0 MSS=1460 WS=4 SACK_PERM=1
164	09:36:09.684532000	192.168.200.1	20.20.20.6	TCP	60		50128	> http [SYN, ACK] Seq=0 Ack=1 Wln=8128 Len=0 MSS=1460
165	09:36:09.684634000	20.20.20.6	192.168.200.1	TCP	54		50128	> http [ACK] Seq=1 Ack=1 Wln=64240 Len=0
166	09:36:09.692903000	20.20.20.6	192.168.200.1	HTTP	462			GET / HTTP/1.1
167	09:36:09.701041000	192.168.200.1	20.20.20.6	TCP	1514			[TCP segment of a reassembled PDU]
168	09:36:09.913060000	20.20.20.6	192.168.200.1	TCP	54		50128	> http [ACK] Seq=409 Ack=1461 Wln=64240 Len=0
169	09:36:09.92031000	192.168.200.1	20.20.20.6	HTTP	234			HTTP/1.0 200 OK (text/html)
170	09:36:09.920862000	192.168.200.1	20.20.20.6	TCP	60		50128	> http [FIN, PSH, ACK] Seq=1641 Ack=409 Wln=3720 Len=0
171	09:36:09.920918000	20.20.20.6	192.168.200.1	TCP	54		50128	> http [ACK] Seq=409 Ack=1642 Wln=64060 Len=0
172	09:36:09.921315000	20.20.20.6	192.168.200.1	TCP	54		50128	> http [FIN, ACK] Seq=409 Ack=1642 Wln=64060 Len=0
173	09:36:09.924874000	192.168.200.1	20.20.20.6	TCP	60		50128	> http [ACK] Seq=1642 Ack=410 Wln=3720 Len=0
174	09:36:10.630917000	Fe80::11096:8168:c7df:92::112		DHCPv6	349	546	547	soffict xdr: 0x9c330 cid: 0001000118e580a6027136531f6

```

Internet Protocol version 4, Src: 20.20.20.6 (20.20.20.6), Dst: 192.168.200.1
Transmission Control Protocol, Src Port: 50128 (50128), Dst Port: 80
Hypertext Transfer Protocol
  GET / HTTP/1.1\r\n
  Accept: image/jpeg, application/x-ms-application, image/gif, application/x-ms-wml, image/png, */*\r\n
  Accept-Language: en-US\r\n
  User-Agent: Mozilla/4.0 (compatible; MSIE 8.0; windows NT 6.1; Trident/4.0; rv:1.9G)\r\n
  Accept-Encoding: gzip, deflate\r\n
  Host: 192.168.200.1\r\n
  Connection: Keep-Alive\r\n
\r\n
[Full request URI: http://192.168.200.1/]
[HTTP request 1/1]
[Response in frame: 169]

```

لأن هذا التكوين لا يستخدم أي شهادات مصادقة ويب، هناك أخطاء CERT في التقاط الحزمة هذا:

175	09:36:14.096708000	20.20.20.6	192.168.200.1	TCP	66		50130	> https [SYN] Seq=0 Wln=8192 Len=0 MSS=1460 WS=4 SACK_PERM=1
176	09:36:14.096706000	192.168.200.1	20.20.20.6	TCP	60		50130	> https [SYN, ACK] Seq=0 Ack=1 Wln=8128 Len=0 MSS=1460
177	09:36:14.096802000	20.20.20.6	192.168.200.1	TCP	54		50130	> https [ACK] Seq=1 Ack=1 Wln=64240 Len=0
178	09:36:14.091283000	20.20.20.6	192.168.200.1	SSLv3	142			Client hello
179	09:36:14.096903000	192.168.200.1	20.20.20.6	SSLv3	739			Server hello, Certificate, Server Hello Done
180	09:36:14.097876000	20.20.20.6	192.168.200.1	SSLv3	262			Client key exchange, Change Cipher Spec, Encrypted Handshake Message
181	09:36:14.107044000	192.168.200.1	20.20.20.6	SSLv3	125			Change Cipher Spec, Encrypted Handshake Message
182	09:36:14.117824000	20.20.20.6	192.168.200.1	TCP	54		50130	> https [FIN, ACK] Seq=297 Ack=757 Wln=63484 Len=0
183	09:36:14.119365000	20.20.20.6	192.168.200.1	TCP	66		50131	> https [SYN] Seq=0 Wln=8192 Len=0 MSS=1460 WS=4 SACK_PERM=1
184	09:36:14.125083000	192.168.200.1	20.20.20.6	TCP	60		50130	> https [ACK] Seq=757 Ack=298 Wln=3832 Len=0
185	09:36:14.125245000	20.20.20.6	192.168.200.1	TCP	54		50130	> https [ACK] Seq=298 Ack=759 Wln=63484 Len=0
186	09:36:14.125447000	192.168.200.1	20.20.20.6	TCP	60		50131	> https [SYN, ACK] Seq=0 Ack=1 Wln=8128 Len=0 MSS=1460
187	09:36:14.125506000	20.20.20.6	192.168.200.1	TCP	54		50131	> https [ACK] Seq=1 Ack=1 Wln=64240 Len=0
188	09:36:14.126314000	20.20.20.6	192.168.200.1	SSLv3	142			Client hello
189	09:36:14.132508000	192.168.200.1	20.20.20.6	SSLv3	739			Server hello, Certificate, Server Hello Done
190	09:36:14.133515000	20.20.20.6	192.168.200.1	SSLv3	262			Client key exchange, Change Cipher Spec, Encrypted Handshake Message
191	09:36:14.142340000	192.168.200.1	20.20.20.6	SSLv3	125			Change Cipher Spec, Encrypted Handshake Message
192	09:36:14.152330000	20.20.20.6	192.168.200.1	SSLv3	633			Application Data
193	09:36:14.160281000	192.168.200.1	20.20.20.6	TCP	1514			[TCP segment of a reassembled PDU]
194	09:36:14.166494000	192.168.200.1	20.20.20.6	SSLv3	186			Application Data
195	09:36:14.166546000	20.20.20.6	192.168.200.1	TCP	54		50131	> https [ACK] Seq=376 Ack=2350 Wln=64240 Len=0
196	09:36:14.167248000	20.20.20.6	192.168.200.1	TCP	54		50131	> https [FIN, ACK] Seq=876 Ack=2350 Wln=64240 Len=0
197	09:36:14.172153000	192.168.200.1	20.20.20.6	TCP	60		https	> 50131 [ACK] Seq=2350 Ack=877 Wln=3253 Len=0

بعد المصادقة الناجحة، يكون العميل في حالة RUN على واجهة المستخدم الرسومية (GUI) الخاصة بواجهة مستخدم الرسومات (WLC).

## Client

Client > Detail

General

AVC Statistics

### ▼ Client Properties

Mac Address	00:21:6A:89:51:CA
IPv4 Address	20.20.20.6
IPv6 Address	None
User Name	0021.6a89.51ca
Port Number	1
Interface	VLAN0020
Vlan ID	20
COX Version	4
E2E Version	1
Mobility State	Local
Policy Manager State	RUN
Management Frame Protection	Disabled
Uptime(sec)	33
Power Save Mode	OFF
Current TxRateSet	None
Data RateSet	6.0,9.0,12.0,18.0,24.0,36.0,48.0,54.0

### ▼ AP Properties

AP Address	C8:F9:F9:83:42:60
AP Name	SURBG-3602
AP Type	802.11n
Wlan Profile	Webauth
Status	Associated
Association ID	1
802.11 Authentication	Open System
Reason Code	1
Status Code	0
CF Pollable	Not implemented
CF Pollable Request	Not implemented
Short Preamble	Not implemented
PBCC	Not implemented
Channel Agility	Not implemented
Fast BSS Transition	Not implemented
FT Reassociation Timeout	20
Session Timeout	1800
WEP state	Disabled

### ▼ Security Information

Security Policy Completed	Enabled
Policy Type	N/A
Encryption Cypher	None
EAP type	Not Applicable
SNMP Nac State	None

### ▼ Client Statistics

Bytes Received	0
Bytes Sent	0
Packets Received	0
Packets Sent	0
Policy Errors	0

## التحقق من الصحة

لا يوجد حالياً إجراء للتحقق من صحة هذا التكوين.

## استكشاف الأخطاء وإصلاحها

ملاحظة: نظراً لأن تصحيح الأخطاء يعتمد على المعالج، يجب تشغيل تصحيح الأخطاء في نافذة صيانة مجدولة.

دخلت هذا يضبط in order to تحررت تشكيك:

```
debug client mac-address 00:21:6A:89:51:CA
debug ip http all
debug access-session all
```

```
All Auth Manager debugging is on
SURBG-5760#debug ip admission all
All IP admission debugging is on
```

5760#show debugging

```
:IP admission
  IP admission AAA event debugging is on
  IP admission ACL event debugging is on
  IP admission session-mgr debugging is on
  IP admission development debugging is on
  IP admission denial-of-service debugging is on
  IP admission EAPoUDP posture validation debugging is on
  IP admission error debugging is on
  IP admission HTTP proxy daemon debugging is on
  IP admission L3 idle-timer debugging is on
  IP admission input-feature debugging is on
  IP admission io debugging is on
  IP admission page debugging is on
  IP admission qualify debugging is on
  IP admission session debugging is on
  IP admission state debugging is on
  IP admission timer debugging is on
  IP admission client debugging is on
  IP admission high-availability debugging is on
:HTTP Server
  HTTP Server transaction debugging is on
  HTTP Server tokens debugging is on
  HTTP Server EZSetup debugging is on
  HTTP Server URL debugging is on
  HTTP Server Authentication debugging is on
  HTTP Server Side Includes debugging is on
  HTTP Application Inout debugging is on
  HTTP Application Detail debugging is on
  HTTP Server Error debugging is on
  HTTP SSL Error debugging is on
:Nova Platform
  dot11/state debugging is on
  pem/events debugging is on
  ft/events debugging is on
  client/mac-addr debugging is on
  dot11/detail debugging is on
  mac/ filters[string 00:21:6A:89:51:C] debugging is on
  dot11/error debugging is on
  dot11/mobile debugging is on
  pem/state debugging is on
```

SURBG-5760#

```
Oct  9 04:16:37.962: %IOSXE-7-PLATFORM: 1 process wcm: Processing assoc-req*
      station: 0021.6a89.51ca AP: c8f9.f983.4260 -01 thread:-114119824
Oct  9 04:16:37.962: %IOSXE-7-PLATFORM: 1 process wcm: 0021.6a89.51ca Adding*
      (mobile on LWAPP AP c8f9.f983.4260 (1
Oct  9 04:16:37.962: %IOSXE-7-PLATFORM: 1 process wcm: 0021.6a89.51ca Creating*
      WL station entry for client - rc 0
Oct  9 04:16:37.962: %IOSXE-7-PLATFORM: 1 process wcm: 0021.6a89.51ca Association*
      received from mobile on AP c8f9.f983.4260
Oct  9 04:16:37.962: %IOSXE-7-PLATFORM: 1 process wcm: 0021.6a89.51ca qos*
      upstream policy is unknown and downstream policy is unknown
Oct  9 04:16:37.962: %IOSXE-7-PLATFORM: 1 process wcm: 0021.6a89.51ca ap*
Changed 0 wlanChanged 0 mscb ipAddr 0.0.0.0, apf RadiusOverride 0x0, numIPv6Addr=0
Oct  9 04:16:37.962: %IOSXE-7-PLATFORM: 1 process wcm: 0021.6a89.51ca Applying*
      .WLAN policy on MSCB
Oct  9 04:16:37.963: %IOSXE-7-PLATFORM: 1 process wcm: 0021.6a89.51ca Applying*
      WLAN ACL policies to client
Oct  9 04:16:37.963: %IOSXE-7-PLATFORM: 1 process wcm: 0021.6a89.51ca No*
      (Interface ACL used for Wireless client in WCM(NGWC
```

```
Oct 9 04:16:37.963: %IOSXE-7-PLATFORM: 1 process wcm: 0021.6a89.51ca Applying*
site-specific IPv6 override for station 0021.6a89.51ca - vapId 9, site
'default-group', interface 'VLAN0020'
Oct 9 04:16:37.963: %IOSXE-7-PLATFORM: 1 process wcm: 0021.6a89.51ca Applying*
,local bridging Interface Policy for station 0021.6a89.51ca - vlan 20
'interface 'VLAN0020
Oct 9 04:16:37.963: %IOSXE-7-PLATFORM: 1 process wcm: 0021.6a89.51ca STA - rates*
0 0 0 0 0 0 0 108 96 72 176 36 152 18 140 :(8)
Oct 9 04:16:37.963: %IOSXE-7-PLATFORM: 1 process wcm: 0021.6a89.51ca new*
capwap_wtp_iif_id 45e7800000000c, sm capwap_wtp_iif_id 0
:Oct 9 04:16:37.963: %IOSXE-7-PLATFORM: 1 process wcm: 0021.6a89.51ca WCDB_ADD*
Radio IIFID 0x6025800000000e, BSSID IIF Id 0x498f800000001b, COS 4
,Oct 9 04:16:37.963: %IOSXE-7-PLATFORM: 1 process wcm: Load Balancer: Success*
,Resource allocated are: Active Switch number: 1, Active Asic number : 0
Reserve Switch number
Reserve Asic number 0. AP Asic num 0 2
:Oct 9 04:16:37.963: %IOSXE-7-PLATFORM: 1 process wcm: 0021.6a89.51ca WCDB_ADD*
Anchor Sw 1, Doppler 0
Oct 9 04:16:37.963: %IOSXE-7-PLATFORM: 1 process wcm: 0021.6a89.51ca*
.(WCDB_ALLOCATE: Client IIF Id alloc SUCCESS w/ client 58b5800000001c (state 0
Oct 9 04:16:37.963: %IOSXE-7-PLATFORM: 1 process wcm: 0021.6a89.51ca iifid*
Clearing Ack flag
:Oct 9 04:16:37.963: %IOSXE-7-PLATFORM: 1 process wcm: 0021.6a89.51ca WCDB_ADD*
Platform ID allocated successfully ID:10
:Oct 9 04:16:37.963: %IOSXE-7-PLATFORM: 1 process wcm: 0021.6a89.51ca WCDB_ADD*
Adding opt82 len 0
:Oct 9 04:16:37.963: %IOSXE-7-PLATFORM: 1 process wcm: 0021.6a89.51ca WCDB_ADD*
Clearing Ack flag
:Oct 9 04:16:37.963: %IOSXE-7-PLATFORM: 1 process wcm: 0021.6a89.51ca WCDB_ADD*
(ssid Webauth bssid c8f9.f983.4260 vlan 20 auth=ASSOCIATION(0) wlan(ap-group/global
client 0 assoc 1 mob=Unassoc(0) radio 1 m_vlan 20 ip 0.0.0.0 src 9/9
0x45e7800000000c dst 0x0 cid 0x58b5800000001c glob rsc id 10dhcpsrv 0.0.0.0
:Oct 9 04:16:37.963: %IOSXE-7-PLATFORM: 1 process wcm: 0021.6a89.51ca WCDB_ADD*
mscb iifid 0x58b5800000001c msinfo iifid 0x0
Oct 9 04:16:37.963: %IOSXE-7-PLATFORM: 1 process wcm: 0021.6a89.51ca 0.0.0.0*
START (0) Initializing policy
Oct 9 04:16:37.963: %IOSXE-7-PLATFORM: 1 process wcm: 0021.6a89.51ca Change state*
(to AUTHCHECK (2) last state START (0
Oct 9 04:16:37.963: %IOSXE-7-PLATFORM: 1 process wcm: 0021.6a89.51ca Change*
(state to L2AUTHCOMPLETE (4) last state AUTHCHECK (2
Oct 9 04:16:37.963: %IOSXE-7-PLATFORM: 1 process wcm: 0021.6a89.51ca*
WCDB_CHANGE: Client 1 m_vlan 20 Radio iif id 0x6025800000000e bssid iif id
0x498f800000001b, bssid c8f9.f983.4260
:Oct 9 04:16:37.963: %IOSXE-7-PLATFORM: 1 process wcm: 0021.6a89.51ca WCDB_AUTH*
Adding opt82 len 0
:Oct 9 04:16:37.963: %IOSXE-7-PLATFORM: 1 process wcm: WCDB_IIF: Ack Message ID*
0x58b5800000001c code 1001
:Oct 9 04:16:37.963: %IOSXE-7-PLATFORM: 1 process wcm: 0021.6a89.51ca WCDB_LLM*
NoRun Prev Mob 0, Curr Mob 0 llmReq 1, return False
Oct 9 04:16:37.963: %IOSXE-7-PLATFORM: 1 process wcm: 0021.6a89.51ca auth state 1*
mob state 0 setWme 0 wme 1 roam_sent 0
Oct 9 04:16:37.964: %IOSXE-7-PLATFORM: 1 process wcm: 0021.6a89.51ca*
WCDB_CHANGE: auth=L2_AUTH(1) vlan 20 radio 1 client_id 0x58b5800000001c
mobility=Unassoc(0) src_int 0x45e7800000000c dst_int 0x0 ackflag 0 reassoc_client
llm_notif 0 ip 0.0.0.0 ip_learn_type 0 0
Oct 9 04:16:37.964: %IOSXE-7-PLATFORM: 1 process wcm: 0021.6a89.51ca*
WCDB_CHANGE: In L2 auth but l2ack waiting lfag not set,so set
Oct 9 04:16:37.964: %IOSXE-7-PLATFORM: 1 process wcm: 0021.6a89.51ca 0.0.0.0*
L2AUTHCOMPLETE (4) DHCP Not required on AP c8f9.f983.4260 vapId 9 apVapId 9for
this client
Oct 9 04:16:37.964: %IOSXE-7-PLATFORM: 1 process wcm: 0021.6a89.51ca Not Using*
WMM Compliance code qosCap 00
Oct 9 04:16:37.964: %IOSXE-7-PLATFORM: 1 process wcm: 0021.6a89.51ca 0.0.0.0*
L2AUTHCOMPLETE (4) Plumbed mobile LWAPP rule on AP c8f9.f983.4260 vapId 9
```

apVapId 9  
Oct 9 04:16:37.964: %IOSXE-7-PLATFORM: 1 process wcm: 0021.6a89.51ca Change state\*  
(to DHCP\_REQD (7) last state L2AUTHCOMPLETE (4  
Oct 9 04:16:37.964: %IOSXE-7-PLATFORM: 1 process wcm: 0021.6a89.51ca\*  
WCDB\_CHANGE: Client 1 m\_vlan 20 Radio iif id 0x602580000000e bssid iif id  
0x498f800000001b, bssid c8f9.f983.4260  
:Oct 9 04:16:37.964: %IOSXE-7-PLATFORM: 1 process wcm: 0021.6a89.51ca WCDB\_AUTH\*  
Adding opt82 len 0  
:Oct 9 04:16:37.964: %IOSXE-7-PLATFORM: 1 process wcm: 0021.6a89.51ca WCDB\_CHANGE\*  
Suppressing SPI (Mobility state not known) pemstate 7 state LEARN\_IP(2) vlan  
client\_id 0x58b5800000001c mob=Unassoc(0) ackflag 1 dropd 0 20  
Oct 9 04:16:37.964: %IOSXE-7-PLATFORM: 1 process wcm: 0021.6a89.51ca Incrementing\*  
(the Reassociation Count 1 for client (of interface VLAN0020  
Oct 9 04:16:37.964: %IOSXE-7-PLATFORM: 1 process wcm: 0021.6a89.51ca\*  
apfPemAddUser2 (apf\_policy.c:161) Changing state for mobile 0021.6a89.51ca on AP  
c8f9.f983.4260 from Idle to Associated  
Oct 9 04:16:37.964: %IOSXE-7-PLATFORM: 1 process wcm: 0021.6a89.51ca\*  
Reason code 0, Preset 4, AAA cause 1  
Oct 9 04:16:37.964: %IOSXE-7-PLATFORM: 1 process wcm: 0021.6a89.51ca Scheduling\*  
deletion of Mobile Station: (callerId: 49) in 1800 seconds  
= Oct 9 04:16:37.964: %IOSXE-7-PLATFORM: 1 process wcm: 0021.6a89.51ca Ms Timeout\*  
Session Timeout = 1800 ,1800  
:Oct 9 04:16:37.964: %IOSXE-7-PLATFORM: 1 process wcm: Sending assoc-resp station\*  
0021.6a89.51ca AP: c8f9.f983.4260 -01 thread:-114119824  
Oct 9 04:16:37.964: %IOSXE-7-PLATFORM: 1 process wcm: 0021.6a89.51ca Sending Assoc\*  
Response to station on BSSID c8f9.f983.4260 (status 0) ApVapId 9 Slot 1  
Oct 9 04:16:37.964: %IOSXE-7-PLATFORM: 1 process wcm: 0021.6a89.51ca\*  
apfProcessAssocReq (apf\_80211.c:6224) Changing state for mobile 0021.6a89.51ca  
on AP c8f9.f983.4260 from Associated to Associated  
Oct 9 04:16:37.964: %IOSXE-7-PLATFORM: 1 process wcm: 0021.6a89.51ca 0.0.0.0\*  
.DHCP\_REQD (7) pemAdvanceState2: MOBILITY-INCOMPLETE with state 7  
Oct 9 04:16:37.964: %IOSXE-7-PLATFORM: 1 process wcm: 0021.6a89.51ca 0.0.0.0\*  
.DHCP\_REQD (7) pemAdvanceState2: MOBILITY-INCOMPLETE with state 7  
Oct 9 04:16:37.965: %IOSXE-7-PLATFORM: 1 process wcm: 0021.6a89.51ca 0.0.0.0\*  
.DHCP\_REQD (7) pemAdvanceState2: MOBILITY-COMPLETE with state 7  
Oct 9 04:16:37.965: %IOSXE-7-PLATFORM: 1 process wcm: 0021.6a89.51ca 0.0.0.0\*  
DHCP\_REQD (7) State Update from Mobility-Incomplete to Mobility-Complete, mobility  
role=Local, client state=APF\_MS\_STATE\_ASSOCIATED  
Oct 9 04:16:37.965: %IOSXE-7-PLATFORM: 1 process wcm: 0021.6a89.51ca 0.0.0.0\*  
DHCP\_REQD (7) pemAdvanceState2 3649, Adding TMP rule  
Oct 9 04:16:37.965: %IOSXE-7-PLATFORM: 1 process wcm: 0021.6a89.51ca 0.0.0.0\*  
DHCP\_REQD (7) Adding Fast Path rule^M on AP c8f9.f983.4260 , slot 1 802.1P = 0^M  
Oct 9 04:16:37.965: %IOSXE-7-PLATFORM: 1 process wcm: 0021.6a89.51ca 0.0.0.0\*  
DHCP\_REQD (7) Successfully plumbed mobile rule  
**Oct 9 04:16:37.965: %IOSXE-7-PLATFORM: 1 process wcm: 0021.6a89.51ca\***  
**WEBAUTH: Using method list Local\_webauth**  
**Oct 9 04:16:37.965: %IOSXE-7-PLATFORM: 1 process wcm: 0021.6a89.51ca\***  
**WEBAUTH: Using webAuth profile name web**  
:Oct 9 04:16:37.965: %IOSXE-7-PLATFORM: 1 process wcm: 0021.6a89.51ca WEBAUTH\*  
Using webAuth Max Logins 3  
:Oct 9 04:16:37.965: %IOSXE-7-PLATFORM: 1 process wcm: 0021.6a89.51ca WEBAUTH\*  
Calling Auth Mgr to authenticate client 58b5800000001c  
:Oct 9 04:16:37.965: %IOSXE-7-PLATFORM: 1 process wcm: 0021.6a89.51ca WEBAUTH\*  
apfMsWebAuthInitiated is not true. So not updating SM  
:Oct 9 04:16:37.965: %IOSXE-7-PLATFORM: 1 process wcm: 0021.6a89.51ca WEBAUTH\*  
At the End of webAuthClientAuthNotify mscb->apfMsOldSmwtp\_iif\_id = 0  
Oct 9 04:16:37.965: %IOSXE-7-PLATFORM: 1 process wcm: 0021.6a89.51ca\*  
WCDB\_CHANGE: Client 1 m\_vlan 20 Radio iif id 0x602580000000e bssid iif id  
0x498f800000001b, bssid c8f9.f983.4260  
:Oct 9 04:16:37.965: %IOSXE-7-PLATFORM: 1 process wcm: 0021.6a89.51ca WCDB\_AUTH\*  
Adding opt82 len 0  
:Oct 9 04:16:37.965: %IOSXE-7-PLATFORM: 1 process wcm: 0021.6a89.51ca WCDB\_LLM\*  
NoRun Prev Mob 0, Curr Mob 1 llmReq 1, return False  
Oct 9 04:16:37.965: %IOSXE-7-PLATFORM: 1 process wcm: 0021.6a89.51ca\*



(WCDB\_CHANGE: Suppressing SPI (ACK message not recvd) pemstate 7 state LEARN\_IP(2  
vlan 20 client\_id 0x58b5800000001c mob=Local(1) ackflag 1 dropd 1  
Oct 9 04:16:37.965: %IOSXE-7-PLATFORM: 1 process wcm: 0021.6a89.51ca Error\*  
updating wcdb on mobility complete  
Oct 9 04:16:37.965: %IOSXE-7-PLATFORM: 1 process wcm: PEM rcv processing\*  
(msg Epm spi response(12  
Oct 9 04:16:37.965: %IOSXE-7-PLATFORM: 1 process wcm: 0021.6a89.51ca aaa\*  
attribute list length is 79  
Oct 9 04:16:37.965: %IOSXE-7-PLATFORM: 1 process wcm: 0021.6a89.51ca\*  
Sending SPI spi\_epm\_epm\_session\_create successfull  
Oct 9 04:16:37.965: %IOSXE-7-PLATFORM: 1 process wcm: PEM rcv processing msg\*  
(Add SCB(3  
,Oct 9 04:16:37.965: %IOSXE-7-PLATFORM: 1 process wcm: 0021.6a89.51ca 0.0.0.0\*  
!!! auth\_state 7 mmRole Local  
,Oct 9 04:16:37.965: %IOSXE-7-PLATFORM: 1 process wcm: 0021.6a89.51ca 0.0.0.0\*  
auth\_state 7 mmRole Local, updating wcdb not needed  
Oct 9 04:16:37.965: %IOSXE-7-PLATFORM: 1 process wcm: 0021.6a89.51ca Tclas\*  
Plumb needed: 0  
Oct 9 04:16:37.966: %IOSXE-7-PLATFORM: 1 process wcm: 0021.6a89.51ca WCDB\*  
SPI response msg handler client code 0 mob state 0  
Oct 9 04:16:37.966: %IOSXE-7-PLATFORM: 1 process wcm: 0021.6a89.51ca\*  
WcdbClientUpdate: L2 Auth ACK from WCDB  
Oct 9 04:16:37.966: %IOSXE-7-PLATFORM: 1 process wcm: 0021.6a89.51ca\*  
WCDB\_L2ACK: wcdbAckRecvdFlag updated  
Oct 9 04:16:37.966: %IOSXE-7-PLATFORM: 1 process wcm: 0021.6a89.51ca\*  
WCDB\_CHANGE: Client 1 m\_vlan 20 Radio iif id 0x6025800000000e bssid iif id  
0x498f8000000001b, bssid c8f9.f983.4260  
Oct 9 04:16:37.966: %IOSXE-7-PLATFORM: 1 process wcm: 0021.6a89.51ca\*  
WCDB\_AUTH: Adding opt82 len 0  
Oct 9 04:16:37.966: %IOSXE-7-PLATFORM: 1 process wcm: 0021.6a89.51ca\*  
WCDB\_LLM: NoRun Prev Mob 0, Curr Mob 1 llmReq 1, return False  
Oct 9 04:16:37.966: %IOSXE-7-PLATFORM: 1 process wcm: 0021.6a89.51ca\*  
auth state 2 mob state 1 setWme 0 wme 1 roam\_sent 0  
Oct 9 04:16:37.966: %IOSXE-7-PLATFORM: 1 process wcm: 0021.6a89.51ca\*  
WCDB\_CHANGE: auth=LEARN\_IP(2) vlan 20 radio 1 client\_id 0x58b5800000001c  
mobility=Local(1) src\_int 0x45e7800000000c dst\_int 0x0 ackflag 2  
reassoc\_client 0 llm\_notif 0 ip 0.0.0.0 ip\_learn\_type 0  
Oct 9 04:16:37.967: %IOSXE-7-PLATFORM: 1 process wcm: EPM: Session\*  
create resp - client handle 58b5800000001c session 10000015  
Oct 9 04:16:37.967: %IOSXE-7-PLATFORM: 1 process wcm: EPM: Netflow\*  
session create  
resp - client handle 58b5800000001c sess 10000015  
Oct 9 04:16:37.967: %IOSXE-7-PLATFORM: 1 process wcm: PEM rcv processing\*  
(msg Epm spi response(12  
Oct 9 04:16:37.967: %IOSXE-7-PLATFORM: 1 process wcm: 0021.6a89.51ca Received\*  
session\_create\_response for client handle 24969359310979100  
Oct 9 04:16:37.967: %IOSXE-7-PLATFORM: 1 process wcm: 0021.6a89.51ca Received\*  
session\_create\_response with EPM session handle 268435477  
Oct 9 04:16:37.967: %IOSXE-7-PLATFORM: 1 process wcm: 0021.6a89.51ca Web-Auth\*  
client, checking if pre-auth policies are needed to be plumbed  
Oct 9 04:16:37.967: %IOSXE-7-PLATFORM: 1 process wcm: 0021.6a89.51ca Trying to\*  
create a preauth policy for the client  
Oct 9 04:16:37.967: %IOSXE-7-PLATFORM: 1 process wcm: 0021.6a89.51ca Send\*  
request to EPM  
Oct 9 04:16:37.967: %IOSXE-7-PLATFORM: 1 process wcm: 0021.6a89.51ca aaa\*  
attribute list length is 34  
Oct 9 04:16:37.967: %IOSXE-7-PLATFORM: 1 process wcm: 0021.6a89.51ca Sending\*  
Activate request for session handle 268435477 successful  
Oct 9 04:16:37.967: %IOSXE-7-PLATFORM: 1 process wcm: 0021.6a89.51ca Pre-auth\*  
policy request sent! Now wait for pre-auth policy ACK from EPM  
Oct 9 04:16:37.967: %IOSXE-7-PLATFORM: 1 process wcm: 0021.6a89.51ca Setting\*  
.the epmSendAcldone flag  
,Oct 9 04:16:37.968: %IOSXE-7-PLATFORM: 1 process wcm: EPM: Init feature\*  
client handle 58b5800000001c session 10000015 authz 1f000015

```
Oct 9 04:16:37.968: %IOSXE-7-PLATFORM: 1 process wcm: EPM: Activate feature*
      client handle 58b5800000001c sess 10000015 authz 1f000015
Oct 9 04:16:37.968: %IOSXE-7-PLATFORM: 1 process wcm: PEM rcv processing msg*
      (Epm spi response(12
Oct 9 04:16:37.968: %IOSXE-7-PLATFORM: 1 process wcm: 0021.6a89.51ca Received*
      activate_features_resp for client handle 24969359310979100
Oct 9 04:16:37.968: %IOSXE-7-PLATFORM: 1 process wcm: 0021.6a89.51ca Received*
      activate_features_resp for EPM session handle 268435477
:Oct 9 04:16:38.019: %IOSXE-7-PLATFORM: 1 process wcm: 0021.6a89.51ca WCDB_IP_BIND*
      w/ IPv4 20.20.20.6 ip_learntype DHCP add_delete 1,options_length 0
      Oct 9 04:16:38.019: %IOSXE-7-PLATFORM: 1 process wcm: 0021.6a89.51ca*
      WcdbClientUpdate: IP Binding from WCDB ip_learntype 1, add_or_delete 1
:Oct 9 04:16:38.019: %IOSXE-7-PLATFORM: 1 process wcm: 0021.6a89.51ca IPv4 Addr*
      20:20:20:6
      Oct 9 04:16:38.019: %IOSXE-7-PLATFORM: 1 process wcm: 0021.6a89.51ca MS got*
      the IP, resetting the Reassociation Count 0 for client
Oct 9 04:16:38.019: %IOSXE-7-PLATFORM: 1 process wcm: 0021.6a89.51ca Change state*
      (to WEBAUTH_REQD (8) last state DHCP_REQD (7
:Oct 9 04:16:38.019: %IOSXE-7-PLATFORM: 1 process wcm: 0021.6a89.51ca WCDB_CHANGE*
      ,Client 1 m_vlan 20 Radio iif id 0x60258000000000e bssid iif id 0x498f8000000001b
      bssid c8f9.f983.4260
:Oct 9 04:16:38.019: %IOSXE-7-PLATFORM: 1 process wcm: 0021.6a89.51ca WCDB_AUTH*
      Adding opt82 len 0
:Oct 9 04:16:38.019: %IOSXE-7-PLATFORM: 1 process wcm: 0021.6a89.51ca WCDB_LLM*
      NoRun Prev Mob 1, Curr Mob 1 llmReq 5, return False
Oct 9 04:16:38.019: %IOSXE-7-PLATFORM: 1 process wcm: 0021.6a89.51ca auth state 3*
      mob state 1 setWme 0 wme 1 roam_sent 0
:Oct 9 04:16:38.019: %IOSXE-7-PLATFORM: 1 process wcm: 0021.6a89.51ca WCDB_CHANGE*
      auth=L3_AUTH(3) vlan 20 radio 1 client_id 0x58b58000000001c mobility=Local(1) src_int
      0x45e78000000000c dst_int 0x0 ackflag 2 reassoc_client 0 llm_notif 0 ip 20.20.20.6
      ip_learntype DHCP
:Oct 9 04:16:38.019: %IOSXE-7-PLATFORM: 1 process wcm: 0021.6a89.51ca WEBAUTH*
      Using method list Local webauth
:Oct 9 04:16:38.019: %IOSXE-7-PLATFORM: 1 process wcm: 0021.6a89.51ca WEBAUTH*
      Using webAuth profile name web
:Oct 9 04:16:38.019: %IOSXE-7-PLATFORM: 1 process wcm: 0021.6a89.51ca WEBAUTH*
      Using webAuth Max Logins 3
:Oct 9 04:16:38.019: %IOSXE-7-PLATFORM: 1 process wcm: 0021.6a89.51ca WEBAUTH*
      Calling Auth Mgr to authenticate client 58b58000000001c
:Oct 9 04:16:38.019: %IOSXE-7-PLATFORM: 1 process wcm: 0021.6a89.51ca WEBAUTH*
      Called SM start with apfMswtp_iif_id 45e78000000000c, mscb->apfMswtp_iif_id
      58b58000000001c
:Oct 9 04:16:38.019: %IOSXE-7-PLATFORM: 1 process wcm: 0021.6a89.51ca WEBAUTH*
      At the End of webAuthClientAuthNotify mscb->apfMsOldSmwtp_iif_id = 45e78000000000c
Oct 9 04:16:38.019: %IOSXE-7-PLATFORM: 1 process wcm: 0021.6a89.51ca 20.20.20.6*
      WEBAUTH_REQD (8) pemAdvanceState2 4382, Adding TMP rule
Oct 9 04:16:38.019: %IOSXE-7-PLATFORM: 1 process wcm: 0021.6a89.51ca 20.20.20.6*
      WEBAUTH_REQD (8) Replacing Fast Path rule^M on AP c8f9.f983.4260 , slot 1
      802.1P = 0^M
Oct 9 04:16:38.019: %IOSXE-7-PLATFORM: 1 process wcm: 0021.6a89.51ca 20.20.20.6*
      WEBAUTH_REQD (8) Successfully plumbed mobile rule
      Oct 9 04:16:38.019: %IOSXE-7-PLATFORM: 1 process wcm: 0021.6a89.51ca Plumbing*
      web-auth redirect rule due to user logout
Oct 9 04:16:38.019: %IOSXE-7-PLATFORM: 1 process wcm: 0021.6a89.51ca Sending*
      IPv4 update to Controller 10.105.135.178
Oct 9 04:16:38.019: %IOSXE-7-PLATFORM: 1 process wcm: 0021.6a89.51ca Assigning*
      Address 20.20.20.6 to mobile
Oct 9 04:16:38.020: %IOSXE-7-PLATFORM: 1 process wcm: PEM rcv processing msg*
      (Add SCB(3
      Oct 9 04:16:38.020: %IOSXE-7-PLATFORM: 1 process wcm: 0021.6a89.51ca*
      !!! auth_state 8 mmRole Local ,20.20.20.6
      Oct 9 04:16:38.020: %IOSXE-7-PLATFORM: 1 process wcm: 0021.6a89.51ca*
      auth_state 8 mmRole Local, updating wcdb not needed ,20.20.20.6
      Oct 9 04:16:38.020: %IOSXE-7-PLATFORM: 1 process wcm: 0021.6a89.51ca Tclas*
```

Plumb needed: 0

```
Oct 9 04:16:38.020: AUTH-EVENT: [0021.6a89.51ca, Ca1] Received session event*
    SESSION_START' from client'
    Oct 9 04:16:38.020: AUTH-EVENT: [0021.6a89.51ca, Ca1] Session start for*
        0021.6a89.51ca
    Oct 9 04:16:38.020: AUTH-EVENT: [0021.6a89.51ca, Ca1] Using stored AAA ID*
        0x00000015
Oct 9 04:16:38.020: AUTH-EVENT: [0021.6a89.51ca, Ca1] Retrieved Client IIF ID*
    58B5800000001C
    Oct 9 04:16:38.020: AUTH-EVENT: [0021.6a89.51ca, Ca1] Allocated new Auth*
        Manager context
        (handle 0x10000016)
,Oct 9 04:16:38.020: AUTH-DETAIL: [0021.6a89.51ca, Ca1] Client 0021.6a89.51ca*
    'Initialising Method state to 'Not run
    Oct 9 04:16:38.020: AUTH-DETAIL: [0021.6a89.51ca, Ca1] Adding method Session*
        Mgr IPDT Shim to runnable list for session 0x10000016
,Oct 9 04:16:38.020: AUTH-DETAIL: [0021.6a89.51ca, Ca1] Client 0021.6a89.51ca*
    'Initialising Method SVM state to 'Not run
    Oct 9 04:16:38.020: AUTH-DETAIL: [0021.6a89.51ca, Ca1] Adding method SVM to*
        runnable list for session 0x10000016
,Oct 9 04:16:38.020: AUTH-DETAIL: [0021.6a89.51ca, Ca1] Client 0021.6a89.51ca*
    'Initialising Method state to 'Not run
    Oct 9 04:16:38.020: AUTH-DETAIL: [0021.6a89.51ca, Ca1] Adding method Switch*
        PI to runnable list for session 0x10000016
,Oct 9 04:16:38.020: AUTH-DETAIL: [0021.6a89.51ca, Ca1] Client 0021.6a89.51ca*
    'Initialising Method state to 'Not run
    Oct 9 04:16:38.020: AUTH-DETAIL: [0021.6a89.51ca, Ca1] Adding method Session*
        Mgr SISF Shim to runnable list for session 0x10000016
,Oct 9 04:16:38.020: AUTH-DETAIL: [0021.6a89.51ca, Ca1] Client 0021.6a89.51ca*
    'Initialising Method iaf state to 'Not run
    Oct 9 04:16:38.020: AUTH-DETAIL: [0021.6a89.51ca, Ca1] Adding method iaf to*
        runnable list for session 0x10000016
,Oct 9 04:16:38.020: AUTH-DETAIL: [0021.6a89.51ca, Ca1] Client 0021.6a89.51ca*
    'Initialising Method Tag state to 'Not run
    Oct 9 04:16:38.020: AUTH-DETAIL: [0021.6a89.51ca, Ca1] Adding method Tag to*
        runnable list for session 0x10000016
,Oct 9 04:16:38.020: AUTH-DETAIL: [0021.6a89.51ca, Ca1] Client 0021.6a89.51ca*
    'Initialising Method dct state to 'Not run
    Oct 9 04:16:38.020: AUTH-DETAIL: [0021.6a89.51ca, Ca1] Adding method dct to*
        runnable list for session 0x10000016
,Oct 9 04:16:38.020: AUTH-DETAIL: [0021.6a89.51ca, Ca1] Client 0021.6a89.51ca*
    'Initialising Method SM Reauth Plugin state to 'Not run
    Oct 9 04:16:38.020: AUTH-DETAIL: [0021.6a89.51ca, Ca1] Adding method SM*
        Reauth Plugin to runnable list for session 0x10000016
,Oct 9 04:16:38.020: AUTH-DETAIL: [0021.6a89.51ca, Ca1] Client 0021.6a89.51ca*
    'Initialising Method SM Accounting Feature state to 'Not run
    Oct 9 04:16:38.020: AUTH-DETAIL: [0021.6a89.51ca, Ca1] Adding method SM*
        Accounting Feature to runnable list for session 0x10000016
,Oct 9 04:16:38.020: AUTH-DETAIL: [0021.6a89.51ca, Ca1] Client 0021.6a89.51ca*
    'Initialising Method state to 'Not run
    Oct 9 04:16:38.020: AUTH-DETAIL: [0021.6a89.51ca, Ca1] Adding method Session*
        Mgr FFCP Shim to runnable list for session 0x10000016
,Oct 9 04:16:38.020: AUTH-DETAIL: [0021.6a89.51ca, Ca1] Client 0021.6a89.51ca*
    'Initialising Method state to 'Not run
    Oct 9 04:16:38.020: AUTH-DETAIL: [0021.6a89.51ca, Ca1] Adding method AIM to*
        runnable list for session 0x10000016
,Oct 9 04:16:38.020: AUTH-DETAIL: [0021.6a89.51ca, Ca1] Client 0021.6a89.51ca*
    'Initialising Method dotlx state to 'Not run
    Oct 9 04:16:38.020: AUTH-DETAIL: [0021.6a89.51ca, Ca1] Adding method dotlx to*
        runnable list for session 0x10000016
,Oct 9 04:16:38.020: AUTH-DETAIL: [0021.6a89.51ca, Ca1] Client 0021.6a89.51ca*
    'Initialising Method mab state to 'Not run
    Oct 9 04:16:38.020: AUTH-DETAIL: [0021.6a89.51ca, Ca1] Adding method mab to*
        runnable list for session 0x10000016
```

```
,Oct 9 04:16:38.020: AUTH-DETAIL: [0021.6a89.51ca, Cal] Client 0021.6a89.51ca*
      'Initialising Method webauth state to 'Not run
Oct 9 04:16:38.020: AUTH-DETAIL: [0021.6a89.51ca, Cal] Adding method webauth*
      to runnable list for session 0x10000016
Oct 9 04:16:38.020: AUTH-EVENT: [0021.6a89.51ca, Cal] Processing SM CB request*
      (for 0x10000016: Event: New client notification (201
,Oct 9 04:16:38.020: AUTH-DETAIL: [0021.6a89.51ca, Cal] Create attr list*
      :session 0x10000016
      Oct 9 04:16:38.020: AUTH-DETAIL: [0021.6a89.51ca, Cal] - adding MAC*
          0021.6a89.51ca
      Oct 9 04:16:38.020: AUTH-DETAIL: [0021.6a89.51ca, Cal] - adding Swidb*
          0x9745F750
      Oct 9 04:16:38.020: AUTH-DETAIL: [0021.6a89.51ca, Cal] - adding AAA_ID=15*
=Oct 9 04:16:38.020: AUTH-DETAIL: [0021.6a89.51ca, Cal] - adding Audit_sid*
          0a6987b25254d8a500000015
      =Oct 9 04:16:38.020: AUTH-DETAIL: [0021.6a89.51ca, Cal] - adding IIF ID*
          0x58B5800000001C
- Oct 9 04:16:38.020: AUTH-EVENT: [0021.6a89.51ca, Cal] New client 0021.6a89.51ca*
      client handle 0x00000001 for SVM
Oct 9 04:16:38.020: AUTH-EVENT: [0021.6a89.51ca, Cal] Added record to DB - hdl*
      0x10000016 / 0021.6a89.51ca. 1 session(s) on IDB
Oct 9 04:16:38.020: AUTH-DETAIL: [0021.6a89.51ca, Cal] Add record - adding MAC*
      0021.6a89.51ca
Oct 9 04:16:38.020: AUTH-DETAIL: [0021.6a89.51ca, Cal] Add record - adding*
      SWIDB Capwap1
Oct 9 04:16:38.020: AUTH-DETAIL: [0021.6a89.51ca, Cal] Add record - adding*
      AAA-ID 15
Oct 9 04:16:38.020: AUTH-DETAIL: [0021.6a89.51ca, Cal] Add record - adding*
      AUDIT-ID 0a6987b25254d8a500000015
Oct 9 04:16:38.021: AUTH-DETAIL: [0021.6a89.51ca, Cal] Add record - adding*
      IIF-ID 0x58B5800000001C
Oct 9 04:16:38.021: AUTH-DETAIL: [0021.6a89.51ca, Cal] Add record - adding*
      (TARGET_SCOPE (Client
      Oct 9 04:16:38.021: AUTH-EVENT: [0021.6a89.51ca, Cal] No policy handle to*
          bind session
Oct 9 04:16:38.021: AUTH-DETAIL: [0021.6a89.51ca, Cal] Create attr list, session*
      :0x10000016
Oct 9 04:16:38.021: AUTH-DETAIL: [0021.6a89.51ca, Cal] - adding MAC 0021.6a89.51ca*
Oct 9 04:16:38.021: AUTH-DETAIL: [0021.6a89.51ca, Cal] - adding Swidb 0x9745F750*
      Oct 9 04:16:38.021: AUTH-DETAIL: [0021.6a89.51ca, Cal] - adding AAA_ID=15*
=Oct 9 04:16:38.021: AUTH-DETAIL: [0021.6a89.51ca, Cal] - adding Audit_sid*
          0a6987b25254d8a500000015
      =Oct 9 04:16:38.021: AUTH-DETAIL: [0021.6a89.51ca, Cal] - adding IIF ID*
          0x58B5800000001C
Oct 9 04:16:38.021: AUTH-EVENT: [0021.6a89.51ca, Cal] Processing SM CB request for*
      (0x10000016: Event: Start a method (200
      Oct 9 04:16:38.021: WA-SM : Cal [0.0.0.0 ] Start CB, info hdl*
          0x0], SM hdl 10000016, flags 0x0] 00000000
      Oct 9 04:16:38.021: WA-SM : Cal [0.0.0.0 ] Start CB, Rcvd ID*
      attrs mac 0021.6a89.51ca, IIF 58B5800000001C , audit-ID 0a6987b25254d8a500000015
(Oct 9 04:16:38.021: WA-SM : Cal Creating idb subblock (1*
Oct 9 04:16:38.021: WA-SESSN: [0.0.0.0 ] Create session, hdl*
      [3D00000B [0x96FD5A50
      Oct 9 04:16:38.021: WA-STATE: [0.0.0.0 ] State Invalid*
          State -> INIT
Oct 9 04:16:38.021: WA-SESSN: Cal [0.0.0.0 ] Create session, Add*
      [address 0.0.0.0 [0021.6a89.51ca
Oct 9 04:16:38.021: WA-STATE: Cal [0.0.0.0 ] State INIT -> INIT*
      Oct 9 04:16:38.021: WA-TIMER: Cal [0.0.0.0 ] State timer start*
          (secs 120)
,Oct 9 04:16:38.021: WA-SM : Cal [0.0.0.0 ] Initiate session*
      SM initd sessions 1
      Oct 9 04:16:38.021: WA-STATE: Cal [0.0.0.0 ] State INIT -> INIT*
Oct 9 04:16:38.021: WA-TIMER: Cal [0.0.0.0 ] State timer restart*
```

(secs 120)

```
Oct 9 04:16:38.021: WA-ACL : Cal [0.0.0.0 ] Add IPv4 intercept*
ACL via FFM, name "IP-Adm-V4-Int-ACL-global", pri 50, IIF 58B5800000001C
Oct 9 04:16:38.021: WA-ACL : Cal [0.0.0.0 ] Add IPv6 intercept*
ACL via FFM, name "IP-Adm-V6-Int-ACL-global", pri 52, IIF 58B5800000001C
,Oct 9 04:16:38.021: AUTH-EVENT: [0021.6a89.51ca, Cal] Client 0021.6a89.51ca*
'Context changing state from 'Idle' to 'Running
,Oct 9 04:16:38.021: AUTH-EVENT: [0021.6a89.51ca, Cal] Client 0021.6a89.51ca*
'Method webauth changing state from 'Not run' to 'Running
Oct 9 04:16:38.021: AUTH-EVENT: [0021.6a89.51ca, Cal] Received internal event*
(SINGLE_ID_UPDATE (handle 0x10000016
,Oct 9 04:16:38.021: WA-SM : Cal [0.0.0.0 ] Change notif CB*
ADD, info hdl 3D00000B, SM hdl 10000016
,Oct 9 04:16:38.021: WA-SM : Cal [20.20.20.6 ] Change notif CB*
Add IPv4 address
,Oct 9 04:16:38.021: WA-SESSN: Cal [20.20.20.6 ] Change notif CB*
Add address
[0021.6a89.51ca] 20.20.20.6
Oct 9 04:16:38.021: WA-SESSN: Cal [20.20.20.6 ] Adding ARP Table*
entry [Notify CB] Vlan20 20.20.20.6 0021.6a89.51ca
Oct 9 04:16:38.021: AUTH-SYNC: [0021.6a89.51ca, Cal] Delay add sync of addr*
for 0021.6a89.51ca / 0x10000016
Oct 9 04:16:38.021: AUTH-EVENT: Handling client event SESSION_STARTED (8) for*
PRE, handle 0x10000016
Oct 9 04:16:38.021: AUTH-EVENT: [0021.6a89.51ca, Cal] SM will not apply policy*
for SESSION_STARTED on 0x10000016 / 0021.6a89.51ca
(Oct 9 04:16:38.021: AUTH-EVENT: [0021.6a89.51ca, Cal] Processing default action(s*
.for event SESSION_STARTED for session 0x10000016
.Oct 9 04:16:38.021: AUTH-DETAIL: No default action(s) for event SESSION_STARTED*
Oct 9 04:16:38.472: AUTH-EVENT: Raising ext evt Template Activated (8) on session*
0x10000015, client (unknown) (0), hdl 0x00000000, attr_list 0x41000336
Oct 9 04:16:38.472: AUTH-EVENT: SM will not send event Template Activated to PRE*
for 0x10000015
- Oct 9 04:16:38.472: %IOSXE-7-PLATFORM: 1 process wcm: EPM: Policy enforcement*
client handle 58b5800000001c session 7600000b authz 1f000015
Oct 9 04:16:38.472: %IOSXE-7-PLATFORM: 1 process wcm: EPM: Netflow policy*
enforcement - client handle 58b5800000001c sess 7600000b authz 1f000015 msg_type
policy_status 0 attr len 0 0
Oct 9 04:16:38.472: %IOSXE-7-PLATFORM: 1 process wcm: PEM rcv processing*
(msg Epm spi response(12
Oct 9 04:16:38.472: %IOSXE-7-PLATFORM: 1 process wcm: 0021.6a89.51ca*
Received policy_enforcement_response for client handle 24969359310979100
Oct 9 04:16:38.472: %IOSXE-7-PLATFORM: 1 process wcm: 0021.6a89.51ca*
Received policy_enforcement_response for EPM session handle 1979711499
Oct 9 04:16:38.472: %IOSXE-7-PLATFORM: 1 process wcm: 0021.6a89.51ca*
Received response for _EPM_SPI_ACTIVATE_FEATURES request sent for client
Oct 9 04:16:38.472: %IOSXE-7-PLATFORM: 1 process wcm: 0021.6a89.51ca*
Received _EPM_SPI_STATUS_SUCCESS for request sent for client
Oct 9 04:16:38.472: %IOSXE-7-PLATFORM: 1 process wcm: 0021.6a89.51ca*
Pre-auth policy ACK recvd from EPM, unset flag on MSCB
,Oct 9 04:16:51.143: WA-QLFY : Cal [20.20.20.6 ] Ingress qlfy*
Session found, ACL in-place, mac [0021.6a89.51ca], intercept
,[Oct 9 04:16:51.143: WA-INFT : Cal [20.20.20.6 ] 50164 TCP SYN [1*
dport 80, INIT state
,Oct 9 04:16:51.147: WA-QLFY : Cal [20.20.20.6 ] Ingress qlfy*
Session found, ACL in-place, mac [0021.6a89.51ca], intercept
Oct 9 04:16:51.147: WA-HTTPD: Cal [20.20.20.6 ] 50164/0 HTTP*
[Intercept, New fd 0, sport [50164], info hdl [0x3D00000B], mac [0021.6a89.51ca
Oct 9 04:16:51.147: WA-HTTPD: Cal [20.20.20.6 ] 50164/0 Create*
IO ctx, id [6B00002B], pid 208
Oct 9 04:16:51.147: WA-CLNT : Cal [20.20.20.6 ] 50164 Client*
conn add [0021.6a89.51ca] ioctx [6B00002B] #1 pid 208
Oct 9 04:16:51.147: WA-IO : Cal [20.20.20.6 ] 50164/0 IO state*
NEW -> READING
```

```
,Oct 9 04:16:51.147: WA-IO : Cal [20.20.20.6 ] 50164/0 Read event*
read buffer addr 0x97546DF4, length 2048, cursor 0
,Oct 9 04:16:51.147: WA-IO : Cal [20.20.20.6 ] 50164/0 Read event*
Read blocked, cursor 0
,Oct 9 04:16:51.147: WA-QLFY : Cal [20.20.20.6 ] Ingress qlfy*
Session found, ACL in-place, mac [0021.6a89.51ca], intercept
,Oct 9 04:16:51.147: WA-IO : Cal [20.20.20.6 ] 50164/0 Read event*
read buffer addr 0x97546DF4, length 2048, cursor 0
,Oct 9 04:16:51.147: WA-IO : Cal [20.20.20.6 ] 50164/0 Read event*
Read blocked, cursor 416
,Oct 9 04:16:51.147: WA-IO : Cal [20.20.20.6 ] 50164/0 Read event*
Message ready
'Oct 9 04:16:51.147: HTTP: token [STRING] len 3: 'GET*
' ' :Oct 9 04:16:51.147: HTTP: token [SPACE ] len 1*
'/' :Oct 9 04:16:51.147: HTTP: token [OTHER ] len 1*
'Oct 9 04:16:51.147: HTTP: token [STRING] len 8: 'wireless*
' ' :Oct 9 04:16:51.147: HTTP: token [SPACE ] len 1*
'Oct 9 04:16:51.147: HTTP: token [STRING] len 4: 'HTTP*
'/' :Oct 9 04:16:51.147: HTTP: token [OTHER ] len 1*
'Oct 9 04:16:51.148: HTTP: token [STRING] len 1: '1*
'.' :Oct 9 04:16:51.148: HTTP: token [OTHER ] len 1*
'Oct 9 04:16:51.148: HTTP: token [STRING] len 1: '1*
'Oct 9 04:16:51.148: HTTP: token [CRLF ] len 2: '\15\12*'
'Oct 9 04:16:51.148: HTTP: token [STRING] len 6: 'Accept*
':' :Oct 9 04:16:51.148: HTTP: token [OTHER ] len 1*
' ' :Oct 9 04:16:51.148: HTTP: token [SPACE ] len 1*
'Oct 9 04:16:51.148: HTTP: token [STRING] len 5: 'image*
'/' :Oct 9 04:16:51.148: HTTP: token [OTHER ] len 1*
'Oct 9 04:16:51.148: HTTP: token [STRING] len 4: 'jpeg*
',' :Oct 9 04:16:51.148: HTTP: token [OTHER ] len 1*
' ' :Oct 9 04:16:51.148: HTTP: token [SPACE ] len 1*
'Oct 9 04:16:51.148: HTTP: token [STRING] len 11: 'application*
'/' :Oct 9 04:16:51.148: HTTP: token [OTHER ] len 1*
'Oct 9 04:16:51.148: HTTP: token [STRING] len 1: 'x*
'-' :Oct 9 04:16:51.148: HTTP: token [OTHER ] len 1*
'Oct 9 04:16:51.148: HTTP: token [STRING] len 2: 'ms*
'-' :Oct 9 04:16:51.148: HTTP: token [OTHER ] len 1*
'Oct 9 04:16:51.148: HTTP: token [STRING] len 11: 'application*
',' :Oct 9 04:16:51.148: HTTP: token [OTHER ] len 1*
' ' :Oct 9 04:16:51.148: HTTP: token [SPACE ] len 1*
'Oct 9 04:16:51.148: HTTP: token [STRING] len 5: 'image*
'/' :Oct 9 04:16:51.148: HTTP: token [OTHER ] len 1*
'Oct 9 04:16:51.148: HTTP: token [STRING] len 3: 'gif*
',' :Oct 9 04:16:51.148: HTTP: token [OTHER ] len 1*
' ' :Oct 9 04:16:51.148: HTTP: token [SPACE ] len 1*
'Oct 9 04:16:51.148: HTTP: token [STRING] len 11: 'application*
'/' :Oct 9 04:16:51.148: HTTP: token [OTHER ] len 1*
'Oct 9 04:16:51.148: HTTP: token [STRING] len 4: 'xaml*
'+' :Oct 9 04:16:51.148: HTTP: token [OTHER ] len 1*
'Oct 9 04:16:51.148: HTTP: token [STRING] len 3: 'xml*
',' :Oct 9 04:16:51.148: HTTP: token [OTHER ] len 1*
' ' :Oct 9 04:16:51.148: HTTP: token [SPACE ] len 1*
'Oct 9 04:16:51.148: HTTP: token [STRING] len 5: 'image*
'/' :Oct 9 04:16:51.148: HTTP: token [OTHER ] len 1*
'Oct 9 04:16:51.148: HTTP: token [STRING] len 5: 'jpeg*
',' :Oct 9 04:16:51.148: HTTP: token [OTHER ] len 1*
' ' :Oct 9 04:16:51.148: HTTP: token [SPACE ] len 1*
'Oct 9 04:16:51.148: HTTP: token [STRING] len 11: 'application*
'/' :Oct 9 04:16:51.148: HTTP: token [OTHER ] len 1*
'Oct 9 04:16:51.148: HTTP: token [STRING] len 1: 'x*
'-' :Oct 9 04:16:51.148: HTTP: token [OTHER ] len 1*
'Oct 9 04:16:51.148: HTTP: token [STRING] len 2: 'ms*
'-' :Oct 9 04:16:51.148: HTTP: token [OTHER ] len 1*
'Oct 9 04:16:51.148: HTTP: token [STRING] len 4: 'xbap*
```

' ,' :Oct 9 04:16:51.148: HTTP: token [OTHER ] len 1\*  
' ' :Oct 9 04:16:51.148: HTTP: token [SPACE ] len 1\*  
'\*' :Oct 9 04:16:51.148: HTTP: token [OTHER ] len 1\*  
'/' :Oct 9 04:16:51.148: HTTP: token [OTHER ] len 1\*  
'\*' :Oct 9 04:16:51.148: HTTP: token [OTHER ] len 1\*  
'Oct 9 04:16:51.148: HTTP: token [CRLF ] len 2: '\15\12\*  
'Oct 9 04:16:51.148: HTTP: token [STRING] len 6: 'Accept\*  
'-' :Oct 9 04:16:51.148: HTTP: token [OTHER ] len 1\*  
'Oct 9 04:16:51.148: HTTP: token [STRING] len 8: 'Language\*  
' ':' :Oct 9 04:16:51.148: HTTP: token [OTHER ] len 1\*  
' ' :Oct 9 04:16:51.148: HTTP: token [SPACE ] len 1\*  
'Oct 9 04:16:51.148: HTTP: token [STRING] len 2: 'en\*  
'-' :Oct 9 04:16:51.148: HTTP: token [OTHER ] len 1\*  
'Oct 9 04:16:51.148: HTTP: token [STRING] len 2: 'US\*  
'Oct 9 04:16:51.148: HTTP: token [CRLF ] len 2: '\15\12\*  
'Oct 9 04:16:51.148: HTTP: token [STRING] len 4: 'User\*  
'-' :Oct 9 04:16:51.148: HTTP: token [OTHER ] len 1\*  
'Oct 9 04:16:51.148: HTTP: token [STRING] len 5: 'Agent\*  
' ':' :Oct 9 04:16:51.148: HTTP: token [OTHER ] len 1\*  
' ' :Oct 9 04:16:51.148: HTTP: token [SPACE ] len 1\*  
'Oct 9 04:16:51.148: HTTP: token [STRING] len 7: 'Mozilla\*  
'/' :Oct 9 04:16:51.148: HTTP: token [OTHER ] len 1\*  
'Oct 9 04:16:51.148: HTTP: token [STRING] len 1: '4\*  
'.' :Oct 9 04:16:51.148: HTTP: token [OTHER ] len 1\*  
'Oct 9 04:16:51.148: HTTP: token [STRING] len 1: '0\*  
' ' :Oct 9 04:16:51.148: HTTP: token [SPACE ] len 1\*  
' )' :Oct 9 04:16:51.148: HTTP: token [OTHER ] len 1\*  
'Oct 9 04:16:51.148: HTTP: token [STRING] len 10: 'compatible\*  
' ;' :Oct 9 04:16:51.148: HTTP: token [OTHER ] len 1\*  
' ' :Oct 9 04:16:51.148: HTTP: token [SPACE ] len 1\*  
'Oct 9 04:16:51.148: HTTP: token [STRING] len 4: 'MSIE\*  
' ' :Oct 9 04:16:51.148: HTTP: token [SPACE ] len 1\*  
'Oct 9 04:16:51.148: HTTP: token [STRING] len 1: '8\*  
'.' :Oct 9 04:16:51.148: HTTP: token [OTHER ] len 1\*  
'Oct 9 04:16:51.148: HTTP: token [STRING] len 1: '0\*  
' ;' :Oct 9 04:16:51.148: HTTP: token [OTHER ] len 1\*  
' ' :Oct 9 04:16:51.148: HTTP: token [SPACE ] len 1\*  
'Oct 9 04:16:51.148: HTTP: token [STRING] len 7: 'Windows\*  
' ' :Oct 9 04:16:51.148: HTTP: token [SPACE ] len 1\*  
'Oct 9 04:16:51.148: HTTP: token [STRING] len 2: 'NT\*  
' ' :Oct 9 04:16:51.148: HTTP: token [SPACE ] len 1\*  
'Oct 9 04:16:51.148: HTTP: token [STRING] len 1: '6\*  
'.' :Oct 9 04:16:51.148: HTTP: token [OTHER ] len 1\*  
'Oct 9 04:16:51.148: HTTP: token [STRING] len 1: '1\*  
' ;' :Oct 9 04:16:51.148: HTTP: token [OTHER ] len 1\*  
' ' :Oct 9 04:16:51.148: HTTP: token [SPACE ] len 1\*  
'Oct 9 04:16:51.148: HTTP: token [STRING] len 7: 'Trident\*  
'/' :Oct 9 04:16:51.148: HTTP: token [OTHER ] len 1\*  
'Oct 9 04:16:51.148: HTTP: token [STRING] len 1: '4\*  
'.' :Oct 9 04:16:51.148: HTTP: token [OTHER ] len 1\*  
'Oct 9 04:16:51.148: HTTP: token [STRING] len 1: '0\*  
' ;' :Oct 9 04:16:51.148: HTTP: token [OTHER ] len 1\*  
' ' :Oct 9 04:16:51.148: HTTP: token [SPACE ] len 1\*  
'Oct 9 04:16:51.148: HTTP: token [STRING] len 5: 'SLCC2\*  
' ;' :Oct 9 04:16:51.148: HTTP: token [OTHER ] len 1\*  
' ' :Oct 9 04:16:51.148: HTTP: token [SPACE ] len 1\*  
'.' :Oct 9 04:16:51.148: HTTP: token [OTHER ] len 1\*  
'Oct 9 04:16:51.148: HTTP: token [STRING] len 3: 'NET\*  
' ' :Oct 9 04:16:51.148: HTTP: token [SPACE ] len 1\*  
'Oct 9 04:16:51.148: HTTP: token [STRING] len 3: 'CLR\*  
' ' :Oct 9 04:16:51.148: HTTP: token [SPACE ] len 1\*  
'Oct 9 04:16:51.148: HTTP: token [STRING] len 1: '2\*  
'.' :Oct 9 04:16:51.148: HTTP: token [OTHER ] len 1\*  
'Oct 9 04:16:51.148: HTTP: token [STRING] len 1: '0\*

```
'.' :Oct 9 04:16:51.148: HTTP: token [OTHER ] len 1*
'Oct 9 04:16:51.148: HTTP: token [STRING] len 5: '50727*
';' :Oct 9 04:16:51.148: HTTP: token [OTHER ] len 1*
' ' :Oct 9 04:16:51.148: HTTP: token [SPACE ] len 1*
'.' :Oct 9 04:16:51.148: HTTP: token [OTHER ] len 1*
'Oct 9 04:16:51.148: HTTP: token [STRING] len 3: 'NET*
' ' :Oct 9 04:16:51.148: HTTP: token [SPACE ] len 1*
'Oct 9 04:16:51.149: HTTP: token [STRING] len 3: 'CLR*
' ' :Oct 9 04:16:51.149: HTTP: token [SPACE ] len 1*
'Oct 9 04:16:51.149: HTTP: token [STRING] len 1: '3*
'.' :Oct 9 04:16:51.149: HTTP: token [OTHER ] len 1*
'Oct 9 04:16:51.149: HTTP: token [STRING] len 1: '5*
'.' :Oct 9 04:16:51.149: HTTP: token [OTHER ] len 1*
'Oct 9 04:16:51.149: HTTP: token [STRING] len 5: '30729*
';' :Oct 9 04:16:51.149: HTTP: token [OTHER ] len 1*
' ' :Oct 9 04:16:51.149: HTTP: token [SPACE ] len 1*
'.' :Oct 9 04:16:51.149: HTTP: token [OTHER ] len 1*
'Oct 9 04:16:51.149: HTTP: token [STRING] len 3: 'NET*
' ' :Oct 9 04:16:51.149: HTTP: token [SPACE ] len 1*
'Oct 9 04:16:51.149: HTTP: token [STRING] len 3: 'CLR*
' ' :Oct 9 04:16:51.149: HTTP: token [SPACE ] len 1*
'Oct 9 04:16:51.149: HTTP: token [STRING] len 1: '3*
'.' :Oct 9 04:16:51.149: HTTP: token [OTHER ] len 1*
'Oct 9 04:16:51.149: HTTP: token [STRING] len 1: '0*
'.' :Oct 9 04:16:51.149: HTTP: token [OTHER ] len 1*
'Oct 9 04:16:51.149: HTTP: token [STRING] len 5: '30729*
';' :Oct 9 04:16:51.149: HTTP: token [OTHER ] len 1*
' ' :Oct 9 04:16:51.149: HTTP: token [SPACE ] len 1*
'Oct 9 04:16:51.149: HTTP: token [STRING] len 5: 'Media*
' ' :Oct 9 04:16:51.149: HTTP: token [SPACE ] len 1*
'Oct 9 04:16:51.149: HTTP: token [STRING] len 6: 'Center*
' ' :Oct 9 04:16:51.149: HTTP: token [SPACE ] len 1*
'Oct 9 04:16:51.149: HTTP: token [STRING] len 2: 'PC*
' ' :Oct 9 04:16:51.149: HTTP: token [SPACE ] len 1*
'Oct 9 04:16:51.149: HTTP: token [STRING] len 1: '6*
'.' :Oct 9 04:16:51.149: HTTP: token [OTHER ] len 1*
'Oct 9 04:16:51.149: HTTP: token [STRING] len 1: '0*
'(' :Oct 9 04:16:51.149: HTTP: token [OTHER ] len 1*
'Oct 9 04:16:51.149: HTTP: token [CRLF ] len 2: '\15\12*
'Oct 9 04:16:51.149: HTTP: token [STRING] len 6: 'Accept*
'-' :Oct 9 04:16:51.149: HTTP: token [OTHER ] len 1*
'Oct 9 04:16:51.149: HTTP: token [STRING] len 8: 'Encoding*
':' :Oct 9 04:16:51.149: HTTP: token [OTHER ] len 1*
' ' :Oct 9 04:16:51.149: HTTP: token [SPACE ] len 1*
'Oct 9 04:16:51.149: HTTP: token [STRING] len 4: 'gzip*
',' :Oct 9 04:16:51.149: HTTP: token [OTHER ] len 1*
' ' :Oct 9 04:16:51.149: HTTP: token [SPACE ] len 1*
'Oct 9 04:16:51.149: HTTP: token [STRING] len 7: 'deflate*
'Oct 9 04:16:51.149: HTTP: token [CRLF ] len 2: '\15\12*
'Oct 9 04:16:51.149: HTTP: token [STRING] len 4: 'Host*
':' :Oct 9 04:16:51.149: HTTP: token [OTHER ] len 1*
' ' :Oct 9 04:16:51.149: HTTP: token [SPACE ] len 1*
'Oct 9 04:16:51.149: HTTP: token [STRING] len 3: '192*
'.' :Oct 9 04:16:51.149: HTTP: token [OTHER ] len 1*
'Oct 9 04:16:51.149: HTTP: token [STRING] len 3: '168*
'.' :Oct 9 04:16:51.149: HTTP: token [OTHER ] len 1*
'Oct 9 04:16:51.149: HTTP: token [STRING] len 3: '200*
'.' :Oct 9 04:16:51.149: HTTP: token [OTHER ] len 1*
'Oct 9 04:16:51.149: HTTP: token [STRING] len 1: '1*
'Oct 9 04:16:51.149: HTTP: token [CRLF ] len 2: '\15\12*
,Oct 9 04:16:51.149: WA-HTTPD: Cal [20.20.20.6 ] Parse GET*
[src [20.20.20.6] dst [192.168.200.1] url [http://192.168.200.1/wireless
Oct 9 04:16:51.149: WA-STATE: Cal [20.20.20.6 ] State*
INIT -> LOGIN
```



```
Oct 9 04:16:51.149: WA-TIMER: Cal [20.20.20.6 ] State timer*
(restart (120 secs
Oct 9 04:16:51.149: WA-PAGE : Cal [20.20.20.6 ] 50164 Sending*
Consent login form, len 1477
Oct 9 04:16:51.149: WA-IO : Cal [20.20.20.6 ] 50164/0 IO*
state READING -> WRITING
Oct 9 04:16:51.149: WA-IO : Cal [20.20.20.6 ] 50164/0 Write*
event, buffer addr 0x975629F0, length 1641, cursor 0
Oct 9 04:16:51.149: WA-IO : Cal [20.20.20.6 ] 50164/0 Write*
event, Write blocked, cursor 1460
,Oct 9 04:16:51.353: WA-QLFY : Cal [20.20.20.6 ] Ingress qlfy*
Session found, ACL in-place, mac [0021.6a89.51ca], intercept
Oct 9 04:16:51.353: WA-IO : Cal [20.20.20.6 ] 50164/0 Write*
event, buffer addr 0x975629F0, length 1641, cursor 1460
Oct 9 04:16:51.354: WA-IO : Cal [20.20.20.6 ] 50164/0 IO state*
WRITING -> END
Oct 9 04:16:51.354: WA-HTTPD: Cal [20.20.20.6 ] 50164/0 Remove*
[IO ctx and close socket, id [6B00002B
Oct 9 04:16:51.354: WA-CLNT : Cal [20.20.20.6 ] 50164 Client conn*
[timer start [0021.6a89.51ca] ioctx [6B00002B
,Oct 9 04:16:51.360: WA-QLFY : Cal [20.20.20.6 ] Ingress qlfy*
Session found, ACL in-place, mac [0021.6a89.51ca], intercept
,Oct 9 04:16:51.360: WA-QLFY : Cal [20.20.20.6 ] Ingress qlfy*
Session found, ACL in-place, mac [0021.6a89.51ca], intercept
,Oct 9 04:16:51.361: WA-INFT : Cal [20.20.20.6 ] 50164 TCP FIN*
dport 80
,Oct 9 04:16:53.460: WA-QLFY : Cal [20.20.20.6 ] Ingress qlfy*
Session found, ACL in-place, mac [0021.6a89.51ca], intercept
,[Oct 9 04:16:53.460: WA-INFT : Cal [20.20.20.6 ] 50165 TCP SYN [2*
dport 443, LOGIN state
,Oct 9 04:16:53.464: WA-QLFY : Cal [20.20.20.6 ] Ingress qlfy*
Session found, ACL in-place, mac [0021.6a89.51ca], intercept
Oct 9 04:16:53.464: WA-HTTPD: Cal [20.20.20.6 ] 50165/0 HTTP*
[Intercept, New fd 0, sport [50165], info hdl [0x3D00000B], mac [0021.6a89.51ca
Oct 9 04:16:53.464: WA-HTTPD: Cal [20.20.20.6 ] 50165/0 Create*
IO ctx, id [AB00002C], pid 208
Oct 9 04:16:53.464: WA-CLNT : Cal [20.20.20.6 ] 50165 Client*
conn add [0021.6a89.51ca] ioctx [AB00002C] #2 pid 208
Oct 9 04:16:53.464: WA-IO : Cal [20.20.20.6 ] 50165/0 IO state*
NEW -> SSL_HANDSHAKING
,Oct 9 04:16:53.470: WA-QLFY : Cal [20.20.20.6 ] Ingress qlfy*
Session found, ACL in-place, mac [0021.6a89.51ca], intercept
,Oct 9 04:16:53.474: WA-QLFY : Cal [20.20.20.6 ] Ingress qlfy*
Session found, ACL in-place, mac [0021.6a89.51ca], intercept
Oct 9 04:16:53.478: WA-IO : Cal [20.20.20.6 ] 50165/0 IO state*
SSL_HANDSHAKING -> READING
,Oct 9 04:16:53.478: WA-IO : Cal [20.20.20.6 ] 50165/0 Read event*
read buffer addr 0x97546DF4, length 2048, cursor 0
,Oct 9 04:16:53.478: WA-IO : Cal [20.20.20.6 ] 50165/0 Read event*
Read blocked, cursor 0
Oct 9 04:16:53.622: WA-QLFY : Cal [20.20.20.6 ] Ingress qlfy, Session*
found, ACL in-place, mac [0021.6a89.51ca], intercept
,Oct 9 04:16:53.622: WA-INFT : Cal [20.20.20.6 ] 50165 TCP FIN*
dport 443
,Oct 9 04:16:53.622: WA-IO : Cal [20.20.20.6 ] 50165/0 Read event*
read buffer addr 0x97546DF4, length 2048, cursor 0
(Oct 9 04:16:53.622: %HTTPS: SSL read fail (-6992*
,Oct 9 04:16:53.622: WA-ERROR: Cal [20.20.20.6 ] 50165/0 Read event*
Socket read error [ERROR] errno=5
Oct 9 04:16:53.622: WA-HTTPD: Cal [20.20.20.6 ] 50165/0 Remove IO*
ctx and close
[socket, id [AB00002C
Oct 9 04:16:53.622: WA-HTTPD: Cal [20.20.20.6 ] 50165/0 Remove IO*
ctx - Closed
```

```

                                SSL connection
Oct  9 04:16:53.623: WA-CLNT : Cal      [20.20.20.6      ] 50165 Client conn*
                                timer start
                                [0021.6a89.51ca] ioctx [AB00002C]
,Oct  9 04:16:53.635: WA-QLFY : Cal      [20.20.20.6      ] Ingress qlfy*
                                Session found, ACL in-place, mac [0021.6a89.51ca], intercept
,Oct  9 04:16:54.943: WA-QLFY : Cal      [20.20.20.6      ] Ingress qlfy*
                                Session found, ACL in-place, mac [0021.6a89.51ca], intercept
,[Oct  9 04:16:54.943: WA-INFT : Cal      [20.20.20.6      ] 50166 TCP SYN [3*
                                dport 443, LOGIN state
,Oct  9 04:16:54.947: WA-QLFY : Cal      [20.20.20.6      ] Ingress qlfy*
                                Session found, ACL in-place, mac [0021.6a89.51ca], intercept
Oct  9 04:16:54.947: WA-HTTPD: Cal      [20.20.20.6      ] 50166/0 HTTP*
[Intercept, New fd 0, sport [50166], info hdl [0x3D00000B], mac [0021.6a89.51ca
Oct  9 04:16:54.947: WA-HTTPD: Cal      [20.20.20.6      ] 50166/0 Create*
                                IO ctx, id [E300002D], pid 208
Oct  9 04:16:54.947: WA-CLNT : Cal      [20.20.20.6      ] 50166 Client conn add*
                                0021.6a89.51ca] ioctx [E300002D] #3 pid 208]
Oct  9 04:16:54.947: WA-IO   : Cal      [20.20.20.6      ] 50166/0 IO state*
                                NEW -> SSL_HANDSHAKING
,Oct  9 04:16:54.947: WA-QLFY : Cal      [20.20.20.6      ] Ingress qlfy*
                                Session found, ACL in-place, mac [0021.6a89.51ca], intercept
,Oct  9 04:16:54.952: WA-QLFY : Cal      [20.20.20.6      ] Ingress qlfy*
                                Session found, ACL in-place, mac [0021.6a89.51ca], intercept
Oct  9 04:16:54.955: WA-IO   : Cal      [20.20.20.6      ] 50166/0 IO state*
                                SSL_HANDSHAKING -> READING
,Oct  9 04:16:54.955: WA-IO   : Cal      [20.20.20.6      ] 50166/0 Read event*
                                read buffer addr 0x97577F50, length 2048, cursor 0
,Oct  9 04:16:54.956: WA-IO   : Cal      [20.20.20.6      ] 50166/0 Read event*
                                Read blocked, cursor 0
,Oct  9 04:16:54.971: WA-QLFY : Cal      [20.20.20.6      ] Ingress qlfy*
                                Session found, ACL in-place, mac [0021.6a89.51ca], intercept
,Oct  9 04:16:54.971: WA-INFT : Cal      [20.20.20.6      ] 50166 TCP FIN*
                                dport 443
,Oct  9 04:16:54.971: WA-IO   : Cal      [20.20.20.6      ] 50166/0 Read event*
                                read buffer addr 0x97577F50, length 2048, cursor 0
                                (Oct  9 04:16:54.971: %HTTPS: SSL read fail (-6992*
,Oct  9 04:16:54.971: WA-ERROR: Cal      [20.20.20.6      ] 50166/0 Read event*
                                Socket read error [ERROR] errno=5
Oct  9 04:16:54.971: WA-HTTPD: Cal      [20.20.20.6      ] 50166/0 Remove IO*
                                [ctx and close socket, id [E300002D]
Oct  9 04:16:54.971: WA-HTTPD: Cal      [20.20.20.6      ] 50166/0 Remove IO*
                                ctx - Closed SSL connection
Oct  9 04:16:54.971: WA-CLNT : Cal      [20.20.20.6      ] 50166 Client conn*
                                [timer start [0021.6a89.51ca] ioctx [E300002D]
,Oct  9 04:16:54.972: WA-QLFY : Cal      [20.20.20.6      ] Ingress qlfy*
                                Session found, ACL in-place, mac [0021.6a89.51ca], intercept
,[Oct  9 04:16:54.972: WA-INFT : Cal      [20.20.20.6      ] 50167 TCP SYN [4*
                                dport 443, LOGIN state
,Oct  9 04:16:54.978: WA-QLFY : Cal      [20.20.20.6      ] Ingress qlfy*
                                Session found, ACL in-place, mac [0021.6a89.51ca], intercept
,Oct  9 04:16:54.978: WA-QLFY : Cal      [20.20.20.6      ] Ingress qlfy*
                                Session found, ACL in-place, mac [0021.6a89.51ca], intercept
Oct  9 04:16:54.978: WA-HTTPD: Cal      [20.20.20.6      ] 50167/0 HTTP*
[Intercept, New fd 0, sport [50167], info hdl [0x3D00000B], mac [0021.6a89.51ca
Oct  9 04:16:54.978: WA-HTTPD: Cal      [20.20.20.6      ] 50167/0 Create IO*
                                ctx, id [3B00002E], pid 208
Oct  9 04:16:54.978: WA-CLNT : Cal      [20.20.20.6      ] 50167 Client conn*
                                add [0021.6a89.51ca] ioctx [3B00002E] #4 pid 208
Oct  9 04:16:54.978: WA-IO   : Cal      [20.20.20.6      ] 50167/0 IO state*
                                NEW -> SSL_HANDSHAKING
,Oct  9 04:16:54.978: WA-QLFY : Cal      [20.20.20.6      ] Ingress qlfy*
                                Session found, ACL in-place, mac [0021.6a89.51ca], intercept
,Oct  9 04:16:54.985: WA-QLFY : Cal      [20.20.20.6      ] Ingress qlfy*
```

```
          Session found, ACL in-place, mac [0021.6a89.51ca], intercept
Oct 9 04:16:54.988: WA-IO : Cal [20.20.20.6 ] 50167/0 IO state*
          SSL_HANDSHAKING -> READING
,Oct 9 04:16:54.988: WA-IO : Cal [20.20.20.6 ] 50167/0 Read event*
          read buffer addr 0x97546DF4, length 2048, cursor 0
,Oct 9 04:16:54.989: WA-IO : Cal [20.20.20.6 ] 50167/0 Read event*
          Read blocked, cursor 0
,Oct 9 04:16:55.004: WA-QLFY : Cal [20.20.20.6 ] Ingress qlfy*
          Session found, ACL in-place, mac [0021.6a89.51ca], intercept
,Oct 9 04:16:55.004: WA-IO : Cal [20.20.20.6 ] 50167/0 Read event*
          read buffer addr 0x97546DF4, length 2048, cursor 0
,Oct 9 04:16:55.004: WA-IO : Cal [20.20.20.6 ] 50167/0 Read event*
          Read blocked, cursor 555
,Oct 9 04:16:55.004: WA-IO : Cal [20.20.20.6 ] 50167/0 Read event*
          Message ready
          'Oct 9 04:16:55.004: HTTP: token [STRING] len 4: 'POST*
Oct 9 04:16:55.004: WA-CLNT : Cal [20.20.20.6 ] 50167 Client conn*
          [set authc ctx [0021.6a89.51ca] ioctx [3B00002E
          ' ' :Oct 9 04:16:55.004: HTTP: token [SPACE ] len 1*
          '/' :Oct 9 04:16:55.004: HTTP: token [OTHER ] len 1*
          ' ' :Oct 9 04:16:55.004: HTTP: token [SPACE ] len 1*
          'Oct 9 04:16:55.004: HTTP: token [STRING] len 4: 'HTTP*
          '/' :Oct 9 04:16:55.004: HTTP: token [OTHER ] len 1*
          'Oct 9 04:16:55.004: HTTP: token [STRING] len 1: '1*
          '.' :Oct 9 04:16:55.004: HTTP: token [OTHER ] len 1*
          'Oct 9 04:16:55.004: HTTP: token [STRING] len 1: '1*
          'Oct 9 04:16:55.004: HTTP: token [CRLF ] len 2: '\15\12*'
          'Oct 9 04:16:55.004: HTTP: token [STRING] len 6: 'Accept*
          ':' :Oct 9 04:16:55.004: HTTP: token [OTHER ] len 1*
          ' ' :Oct 9 04:16:55.004: HTTP: token [SPACE ] len 1*
          'Oct 9 04:16:55.004: HTTP: token [STRING] len 5: 'image*
          '/' :Oct 9 04:16:55.004: HTTP: token [OTHER ] len 1*
          'Oct 9 04:16:55.004: HTTP: token [STRING] len 4: 'jpeg*
          ',' :Oct 9 04:16:55.004: HTTP: token [OTHER ] len 1*
          ' ' :Oct 9 04:16:55.004: HTTP: token [SPACE ] len 1*
          'Oct 9 04:16:55.004: HTTP: token [STRING] len 11: 'application*
          '/' :Oct 9 04:16:55.004: HTTP: token [OTHER ] len 1*
          'Oct 9 04:16:55.004: HTTP: token [STRING] len 1: 'x*
          '-' :Oct 9 04:16:55.004: HTTP: token [OTHER ] len 1*
          'Oct 9 04:16:55.004: HTTP: token [STRING] len 2: 'ms*
          '-' :Oct 9 04:16:55.005: HTTP: token [OTHER ] len 1*
          'Oct 9 04:16:55.005: HTTP: token [STRING] len 11: 'application*
          ',' :Oct 9 04:16:55.005: HTTP: token [OTHER ] len 1*
          ' ' :Oct 9 04:16:55.005: HTTP: token [SPACE ] len 1*
          'Oct 9 04:16:55.005: HTTP: token [STRING] len 5: 'image*
          '/' :Oct 9 04:16:55.005: HTTP: token [OTHER ] len 1*
          'Oct 9 04:16:55.005: HTTP: token [STRING] len 3: 'gif*
          ',' :Oct 9 04:16:55.005: HTTP: token [OTHER ] len 1*
          ' ' :Oct 9 04:16:55.005: HTTP: token [SPACE ] len 1*
          'Oct 9 04:16:55.005: HTTP: token [STRING] len 11: 'application*
          '/' :Oct 9 04:16:55.005: HTTP: token [OTHER ] len 1*
          'Oct 9 04:16:55.005: HTTP: token [STRING] len 4: 'xaml*
          '+' :Oct 9 04:16:55.005: HTTP: token [OTHER ] len 1*
          'Oct 9 04:16:55.005: HTTP: token [STRING] len 3: 'xml*
          ',' :Oct 9 04:16:55.005: HTTP: token [OTHER ] len 1*
          ' ' :Oct 9 04:16:55.005: HTTP: token [SPACE ] len 1*
          'Oct 9 04:16:55.005: HTTP: token [STRING] len 5: 'image*
          '/' :Oct 9 04:16:55.005: HTTP: token [OTHER ] len 1*
          'Oct 9 04:16:55.005: HTTP: token [STRING] len 5: 'jpeg*
          ',' :Oct 9 04:16:55.005: HTTP: token [OTHER ] len 1*
          ' ' :Oct 9 04:16:55.005: HTTP: token [SPACE ] len 1*
          'Oct 9 04:16:55.005: HTTP: token [STRING] len 11: 'application*
          '/' :Oct 9 04:16:55.005: HTTP: token [OTHER ] len 1*
          'Oct 9 04:16:55.005: HTTP: token [STRING] len 1: 'x*
```

'-' :Oct 9 04:16:55.005: HTTP: token [OTHER ] len 1\*  
'Oct 9 04:16:55.005: HTTP: token [STRING] len 2: 'ms\*  
'-' :Oct 9 04:16:55.005: HTTP: token [OTHER ] len 1\*  
'Oct 9 04:16:55.005: HTTP: token [STRING] len 4: 'xbap\*  
' ,' :Oct 9 04:16:55.005: HTTP: token [OTHER ] len 1\*  
' ' :Oct 9 04:16:55.005: HTTP: token [SPACE ] len 1\*  
'\*' :Oct 9 04:16:55.005: HTTP: token [OTHER ] len 1\*  
'/' :Oct 9 04:16:55.005: HTTP: token [OTHER ] len 1\*  
'\*' :Oct 9 04:16:55.005: HTTP: token [OTHER ] len 1\*  
'Oct 9 04:16:55.005: HTTP: token [CRLF ] len 2: '\15\12\*  
'Oct 9 04:16:55.005: HTTP: token [STRING] len 4: 'User\*  
'-' :Oct 9 04:16:55.005: HTTP: token [OTHER ] len 1\*  
'Oct 9 04:16:55.005: HTTP: token [STRING] len 5: 'Agent\*  
' : ' :Oct 9 04:16:55.005: HTTP: token [OTHER ] len 1\*  
' ' :Oct 9 04:16:55.005: HTTP: token [SPACE ] len 1\*  
'Oct 9 04:16:55.005: HTTP: token [STRING] len 7: 'Mozilla\*  
'/' :Oct 9 04:16:55.005: HTTP: token [OTHER ] len 1\*  
'Oct 9 04:16:55.005: HTTP: token [STRING] len 1: '4\*  
' .' :Oct 9 04:16:55.005: HTTP: token [OTHER ] len 1\*  
'Oct 9 04:16:55.005: HTTP: token [STRING] len 1: '0\*  
' ' :Oct 9 04:16:55.005: HTTP: token [SPACE ] len 1\*  
' )' :Oct 9 04:16:55.005: HTTP: token [OTHER ] len 1\*  
'Oct 9 04:16:55.005: HTTP: token [STRING] len 10: 'compatible\*  
' ;' :Oct 9 04:16:55.005: HTTP: token [OTHER ] len 1\*  
' ' :Oct 9 04:16:55.005: HTTP: token [SPACE ] len 1\*  
'Oct 9 04:16:55.005: HTTP: token [STRING] len 4: 'MSIE\*  
' ' :Oct 9 04:16:55.005: HTTP: token [SPACE ] len 1\*  
'Oct 9 04:16:55.005: HTTP: token [STRING] len 1: '8\*  
' .' :Oct 9 04:16:55.005: HTTP: token [OTHER ] len 1\*  
'Oct 9 04:16:55.005: HTTP: token [STRING] len 1: '0\*  
' ;' :Oct 9 04:16:55.005: HTTP: token [OTHER ] len 1\*  
' ' :Oct 9 04:16:55.005: HTTP: token [SPACE ] len 1\*  
'Oct 9 04:16:55.005: HTTP: token [STRING] len 7: 'Windows\*  
' ' :Oct 9 04:16:55.005: HTTP: token [SPACE ] len 1\*  
'Oct 9 04:16:55.005: HTTP: token [STRING] len 2: 'NT\*  
' ' :Oct 9 04:16:55.005: HTTP: token [SPACE ] len 1\*  
'Oct 9 04:16:55.005: HTTP: token [STRING] len 1: '6\*  
' .' :Oct 9 04:16:55.005: HTTP: token [OTHER ] len 1\*  
'Oct 9 04:16:55.005: HTTP: token [STRING] len 1: '1\*  
' ;' :Oct 9 04:16:55.005: HTTP: token [OTHER ] len 1\*  
' ' :Oct 9 04:16:55.005: HTTP: token [SPACE ] len 1\*  
'Oct 9 04:16:55.005: HTTP: token [STRING] len 7: 'Trident\*  
'/' :Oct 9 04:16:55.005: HTTP: token [OTHER ] len 1\*  
'Oct 9 04:16:55.005: HTTP: token [STRING] len 1: '4\*  
' .' :Oct 9 04:16:55.005: HTTP: token [OTHER ] len 1\*  
'Oct 9 04:16:55.005: HTTP: token [STRING] len 1: '0\*  
' ;' :Oct 9 04:16:55.005: HTTP: token [OTHER ] len 1\*  
' ' :Oct 9 04:16:55.005: HTTP: token [SPACE ] len 1\*  
'Oct 9 04:16:55.005: HTTP: token [STRING] len 5: 'SLCC2\*  
' ;' :Oct 9 04:16:55.005: HTTP: token [OTHER ] len 1\*  
' ' :Oct 9 04:16:55.005: HTTP: token [SPACE ] len 1\*  
' .' :Oct 9 04:16:55.005: HTTP: token [OTHER ] len 1\*  
'Oct 9 04:16:55.005: HTTP: token [STRING] len 3: 'NET\*  
' ' :Oct 9 04:16:55.005: HTTP: token [SPACE ] len 1\*  
'Oct 9 04:16:55.005: HTTP: token [STRING] len 3: 'CLR\*  
' ' :Oct 9 04:16:55.005: HTTP: token [SPACE ] len 1\*  
'Oct 9 04:16:55.005: HTTP: token [STRING] len 1: '2\*  
' .' :Oct 9 04:16:55.005: HTTP: token [OTHER ] len 1\*  
'Oct 9 04:16:55.005: HTTP: token [STRING] len 1: '0\*  
' .' :Oct 9 04:16:55.005: HTTP: token [OTHER ] len 1\*  
'Oct 9 04:16:55.005: HTTP: token [STRING] len 5: '50727\*  
' ;' :Oct 9 04:16:55.005: HTTP: token [OTHER ] len 1\*  
' ' :Oct 9 04:16:55.005: HTTP: token [SPACE ] len 1\*  
' .' :Oct 9 04:16:55.005: HTTP: token [OTHER ] len 1\*

'Oct 9 04:16:55.005: HTTP: token [STRING] len 3: 'NET\*  
' ':Oct 9 04:16:55.005: HTTP: token [SPACE ] len 1\*  
'Oct 9 04:16:55.005: HTTP: token [STRING] len 3: 'CLR\*  
' ':Oct 9 04:16:55.005: HTTP: token [SPACE ] len 1\*  
'Oct 9 04:16:55.005: HTTP: token [STRING] len 1: '3\*  
' ':Oct 9 04:16:55.005: HTTP: token [OTHER ] len 1\*  
'Oct 9 04:16:55.005: HTTP: token [STRING] len 1: '5\*  
' ':Oct 9 04:16:55.005: HTTP: token [OTHER ] len 1\*  
'Oct 9 04:16:55.005: HTTP: token [STRING] len 5: '30729\*  
' ';':Oct 9 04:16:55.005: HTTP: token [OTHER ] len 1\*  
' ':Oct 9 04:16:55.005: HTTP: token [SPACE ] len 1\*  
' ':Oct 9 04:16:55.005: HTTP: token [OTHER ] len 1\*  
'Oct 9 04:16:55.005: HTTP: token [STRING] len 3: 'NET\*  
' ':Oct 9 04:16:55.005: HTTP: token [SPACE ] len 1\*  
'Oct 9 04:16:55.005: HTTP: token [STRING] len 3: 'CLR\*  
' ':Oct 9 04:16:55.005: HTTP: token [SPACE ] len 1\*  
'Oct 9 04:16:55.005: HTTP: token [STRING] len 1: '3\*  
' ':Oct 9 04:16:55.005: HTTP: token [OTHER ] len 1\*  
'Oct 9 04:16:55.005: HTTP: token [STRING] len 1: '0\*  
' ':Oct 9 04:16:55.005: HTTP: token [OTHER ] len 1\*  
'Oct 9 04:16:55.005: HTTP: token [STRING] len 5: '30729\*  
' ';':Oct 9 04:16:55.005: HTTP: token [OTHER ] len 1\*  
' ':Oct 9 04:16:55.005: HTTP: token [SPACE ] len 1\*  
'Oct 9 04:16:55.005: HTTP: token [STRING] len 5: 'Media\*  
' ':Oct 9 04:16:55.005: HTTP: token [SPACE ] len 1\*  
'Oct 9 04:16:55.005: HTTP: token [STRING] len 6: 'Center\*  
' ':Oct 9 04:16:55.005: HTTP: token [SPACE ] len 1\*  
'Oct 9 04:16:55.005: HTTP: token [STRING] len 2: 'PC\*  
' ':Oct 9 04:16:55.005: HTTP: token [SPACE ] len 1\*  
'Oct 9 04:16:55.005: HTTP: token [STRING] len 1: '6\*  
' ':Oct 9 04:16:55.005: HTTP: token [OTHER ] len 1\*  
'Oct 9 04:16:55.005: HTTP: token [STRING] len 1: '0\*  
' (':Oct 9 04:16:55.005: HTTP: token [OTHER ] len 1\*  
'Oct 9 04:16:55.005: HTTP: token [CRLF ] len 2: '\15\12\*  
'Oct 9 04:16:55.005: HTTP: token [STRING] len 7: 'Content\*  
' -:Oct 9 04:16:55.005: HTTP: token [OTHER ] len 1\*  
'Oct 9 04:16:55.005: HTTP: token [STRING] len 4: 'Type\*  
' ':Oct 9 04:16:55.006: HTTP: token [OTHER ] len 1\*  
' ':Oct 9 04:16:55.006: HTTP: token [SPACE ] len 1\*  
'Oct 9 04:16:55.006: HTTP: token [STRING] len 11: 'application\*  
' /':Oct 9 04:16:55.006: HTTP: token [OTHER ] len 1\*  
'Oct 9 04:16:55.006: HTTP: token [STRING] len 1: 'x\*  
' -:Oct 9 04:16:55.006: HTTP: token [OTHER ] len 1\*  
'Oct 9 04:16:55.006: HTTP: token [STRING] len 3: 'www\*  
' -:Oct 9 04:16:55.006: HTTP: token [OTHER ] len 1\*  
'Oct 9 04:16:55.006: HTTP: token [STRING] len 4: 'form\*  
' -:Oct 9 04:16:55.006: HTTP: token [OTHER ] len 1\*  
'Oct 9 04:16:55.006: HTTP: token [STRING] len 10: 'urlencoded\*  
'Oct 9 04:16:55.006: HTTP: token [CRLF ] len 2: '\15\12\*  
'Oct 9 04:16:55.006: HTTP: token [STRING] len 6: 'Accept\*  
' -:Oct 9 04:16:55.006: HTTP: token [OTHER ] len 1\*  
'Oct 9 04:16:55.006: HTTP: token [STRING] len 8: 'Encoding\*  
' ':Oct 9 04:16:55.006: HTTP: token [OTHER ] len 1\*  
' ':Oct 9 04:16:55.006: HTTP: token [SPACE ] len 1\*  
'Oct 9 04:16:55.006: HTTP: token [STRING] len 4: 'gzip\*  
' ',':Oct 9 04:16:55.006: HTTP: token [OTHER ] len 1\*  
' ':Oct 9 04:16:55.006: HTTP: token [SPACE ] len 1\*  
'Oct 9 04:16:55.006: HTTP: token [STRING] len 7: 'deflate\*  
'Oct 9 04:16:55.006: HTTP: token [CRLF ] len 2: '\15\12\*  
'Oct 9 04:16:55.006: HTTP: token [STRING] len 4: 'Host\*  
' ':Oct 9 04:16:55.006: HTTP: token [OTHER ] len 1\*  
' ':Oct 9 04:16:55.006: HTTP: token [SPACE ] len 1\*  
'Oct 9 04:16:55.006: HTTP: token [STRING] len 3: '192\*  
' ':Oct 9 04:16:55.006: HTTP: token [OTHER ] len 1\*

'Oct 9 04:16:55.006: HTTP: token [STRING] len 3: '168\*  
'.' :Oct 9 04:16:55.006: HTTP: token [OTHER ] len 1\*  
'Oct 9 04:16:55.006: HTTP: token [STRING] len 3: '200\*  
'.' :Oct 9 04:16:55.006: HTTP: token [OTHER ] len 1\*  
'Oct 9 04:16:55.006: HTTP: token [STRING] len 1: '1\*  
'Oct 9 04:16:55.006: HTTP: token [CRLF ] len 2: '\15\12\*  
'Oct 9 04:16:55.006: HTTP: token [STRING] len 7: 'Content\*  
'-' :Oct 9 04:16:55.006: HTTP: token [OTHER ] len 1\*  
'Oct 9 04:16:55.006: HTTP: token [STRING] len 6: 'Length\*  
'.' :Oct 9 04:16:55.006: HTTP: token [OTHER ] len 1\*  
' ' :Oct 9 04:16:55.006: HTTP: token [SPACE ] len 1\*  
'Oct 9 04:16:55.006: HTTP: token [STRING] len 2: '52\*  
'Oct 9 04:16:55.006: HTTP: token [CRLF ] len 2: '\15\12\*  
'Oct 9 04:16:55.006: HTTP: token [STRING] len 10: 'Connection\*  
'.' :Oct 9 04:16:55.006: HTTP: token [OTHER ] len 1\*  
' ' :Oct 9 04:16:55.006: HTTP: token [SPACE ] len 1\*  
'Oct 9 04:16:55.006: HTTP: token [STRING] len 4: 'Keep\*  
'-' :Oct 9 04:16:55.006: HTTP: token [OTHER ] len 1\*  
'Oct 9 04:16:55.006: HTTP: token [STRING] len 5: 'Alive\*  
'Oct 9 04:16:55.006: HTTP: token [CRLF ] len 2: '\15\12\*  
'Oct 9 04:16:55.006: HTTP: token [STRING] len 5: 'Cache\*  
'-' :Oct 9 04:16:55.006: HTTP: token [OTHER ] len 1\*  
'Oct 9 04:16:55.006: HTTP: token [STRING] len 7: 'Control\*  
'.' :Oct 9 04:16:55.006: HTTP: token [OTHER ] len 1\*  
' ' :Oct 9 04:16:55.006: HTTP: token [SPACE ] len 1\*  
'Oct 9 04:16:55.006: HTTP: token [STRING] len 2: 'no\*  
'-' :Oct 9 04:16:55.006: HTTP: token [OTHER ] len 1\*  
'Oct 9 04:16:55.006: HTTP: token [STRING] len 5: 'cache\*  
'Oct 9 04:16:55.006: HTTP: token [CRLF ] len 2: '\15\12\*  
'Oct 9 04:16:55.006: HTTP: token [STRING] len 6: 'Accept\*  
'-' :Oct 9 04:16:55.006: HTTP: token [OTHER ] len 1\*  
'Oct 9 04:16:55.006: HTTP: token [STRING] len 8: 'Language\*  
'.' :Oct 9 04:16:55.006: HTTP: token [OTHER ] len 1\*  
' ' :Oct 9 04:16:55.006: HTTP: token [SPACE ] len 1\*  
'Oct 9 04:16:55.006: HTTP: token [STRING] len 2: 'en\*  
'-' :Oct 9 04:16:55.006: HTTP: token [OTHER ] len 1\*  
'Oct 9 04:16:55.006: HTTP: token [STRING] len 2: 'US\*  
'Oct 9 04:16:55.006: HTTP: token [CRLF ] len 2: '\15\12\*  
'Oct 9 04:16:55.006: HTTP: token [CRLF ] len 2: '\15\12\*  
'Oct 9 04:16:55.006: HTTP: token [STRING] len 2: 'au\*  
'\_' :Oct 9 04:16:55.006: HTTP: token [OTHER ] len 1\*  
'Oct 9 04:16:55.006: HTTP: token [STRING] len 10: 'pxytimetag\*  
'=' :Oct 9 04:16:55.006: HTTP: token [OTHER ] len 1\*  
'Oct 9 04:16:55.006: HTTP: token [STRING] len 10: '1023410187\*  
'&' :Oct 9 04:16:55.006: HTTP: token [OTHER ] len 1\*  
'Oct 9 04:16:55.006: HTTP: token [STRING] len 7: 'consent\*  
'\_' :Oct 9 04:16:55.006: HTTP: token [OTHER ] len 1\*  
'Oct 9 04:16:55.006: HTTP: token [STRING] len 6: 'status\*  
'=' :Oct 9 04:16:55.006: HTTP: token [OTHER ] len 1\*  
'Oct 9 04:16:55.006: HTTP: token [STRING] len 6: 'accept\*  
'&' :Oct 9 04:16:55.006: HTTP: token [OTHER ] len 1\*  
'Oct 9 04:16:55.006: HTTP: token [STRING] len 2: 'ok\*  
'=' :Oct 9 04:16:55.006: HTTP: token [OTHER ] len 1\*  
'Oct 9 04:16:55.006: HTTP: token [STRING] len 2: 'OK\*  
Oct 9 04:16:55.006: WA-HTTPD: Cal [20.20.20.6 ] 50167 Parse Consent\*  
[POST, au\_pxytimetag [0x3D00000B  
Oct 9 04:16:55.006: WA-HTTPD: Cal [20.20.20.6 ] 50167 Parse Consent\*  
[POST, consent status [accept  
Oct 9 04:16:55.006: WA-HTTPD: Cal [20.20.20.6 ] Convey consent result\*  
to SM, Attr mac: 0021.6a89.51ca  
**Oct 9 04:16:55.006: AUTH-EVENT: [0021.6a89.51ca, Cal] Authc success from\***  
**(WebAuth (3), status OK (0) / event success (0**  
:Oct 9 04:16:55.006: AUTH-EVENT: [0021.6a89.51ca, Cal] Highest prio method\*  
INVALID, Authz method: INVALID, Conn hdl: webauth

Oct 9 04:16:55.006: AUTH-EVENT: Raised event APPLY\_USER\_PROFILE (13) on handle\*  
0x10000016  
(Oct 9 04:16:55.006: AUTH-EVENT: Raised event RX\_METHOD\_AUTHC\_SUCCESS (3\*  
on handle 0x10000016  
Oct 9 04:16:55.006: AUTH-EVENT: [0021.6a89.51ca, Cal] Queued AUTHC SUCCESS\*  
(from WebAuth for session 0x10000016 (0021.6a89.51ca  
Oct 9 04:16:55.006: WA-HTTPD: Cal [20.20.20.6 ] Convey consent result\*  
[to SM, [OK  
**<- Oct 9 04:16:55.006: WA-STATE: Cal [20.20.20.6 ] State LOGIN\*  
AUTHC\_SUCCESS**  
Oct 9 04:16:55.006: WA-TIMER: Cal [20.20.20.6 ] State timer stop\*  
Oct 9 04:16:55.006: WA-IO : Cal [20.20.20.6 ] 50167/0 IO state\*  
READING -> AUTHENTICATING  
Oct 9 04:16:55.006: AUTH-EVENT: [0021.6a89.51ca, Cal] Received internal event\*  
(APPLY\_USER\_PROFILE (handle 0x10000016  
:Oct 9 04:16:55.006: AUTH-EVENT: [0021.6a89.51ca, Cal] Clearing AAA data for\*  
0021.6a89.51ca  
Oct 9 04:16:55.006: AUTH-SYNC: [0021.6a89.51ca, Cal] Delay add/update sync of\*  
username for 0021.6a89.51ca / 0x10000016  
Oct 9 04:16:55.006: AUTH-EVENT: [0021.6a89.51ca, Cal] Received User-Name\*  
0021.6a89.51ca for client 0021.6a89.51ca  
Oct 9 04:16:55.007: AUTH-SYNC: [0021.6a89.51ca, Cal] Delay add/update sync of\*  
auth-domain for 0021.6a89.51ca / 0x10000016  
Oct 9 04:16:55.007: AUTH-SYNC: [0021.6a89.51ca, Cal] Delay add/update sync of\*  
target-scope for 0021.6a89.51ca / 0x10000016  
Oct 9 04:16:55.007: AUTH-EVENT: [0021.6a89.51ca, Cal] Existing AAA ID: 0x00000015\*  
,Oct 9 04:16:55.007: AUTH-EVENT: [0021.6a89.51ca, Cal] Client 0021.6a89.51ca\*  
'Method webauth changing state from 'Running' to 'Authc Success  
,Oct 9 04:16:55.007: AUTH-EVENT: [0021.6a89.51ca, Cal] Client 0021.6a89.51ca\*  
'Context changing state from 'Running' to 'Authc Success  
Oct 9 04:16:55.007: AUTH-EVENT: [0021.6a89.51ca, Cal] Non-SM policy applied for\*  
0x10000016. Authz\_attrs not freed  
Oct 9 04:16:55.007: AUTH-EVENT: Handling client event RX\_METHOD\_AUTHC\_SUCCESS\*  
for PRE, handle 0x10000016 (3)  
Oct 9 04:16:55.007: AUTH-SYNC: [0021.6a89.51ca, Cal] Delay add/update sync of method\*  
for 0021.6a89.51ca / 0x10000016  
Oct 9 04:16:55.007: AUTH-EVENT: [0021.6a89.51ca, Cal] SM will not apply policy for\*  
RX\_METHOD\_AUTHC\_SUCCESS on 0x10000016 / 0021.6a89.51ca  
(Oct 9 04:16:55.007: AUTH-EVENT: [0021.6a89.51ca, Cal] Processing default action(s\*  
.for event RX\_METHOD\_AUTHC\_SUCCESS for session 0x10000016  
Oct 9 04:16:55.007: AUTH-EVENT: [0021.6a89.51ca, Cal] Executing default action\*  
(handler for AUTHC SUCCESS (0x10000016  
- Oct 9 04:16:55.007: AUTH-EVENT: [0021.6a89.51ca, Cal] AUTHC\_SUCCESS\*  
authorize by default  
Oct 9 04:16:55.007: AUTH-EVENT: [0021.6a89.51ca, Cal] Signalling Authz success for\*  
client 0021.6a89.51ca  
,Oct 9 04:16:55.007: AUTH-EVENT: [0021.6a89.51ca, Cal] Client 0021.6a89.51ca\*  
'Context changing state from 'Authc Success' to 'Authz Success  
Oct 9 04:16:55.007: AUTH-EVENT: [0021.6a89.51ca, Cal] Processing SM CB request for\*  
(0x10000016: Event: Authorize request (216  
:Oct 9 04:16:55.007: %IOSXE-7-PLATFORM: 1 process wcm: 0021.6a89.51ca WEBAUTH\*  
received authentication response, status=0 AAA ID=0 protocol=0  
:Oct 9 04:16:55.007: %IOSXE-7-PLATFORM: 1 process wcm: 0021.6a89.51ca WEBAUTH\*  
Received message from webauth queue: 1  
:Oct 9 04:16:55.007: %IOSXE-7-PLATFORM: 1 process wcm: 0021.6a89.51ca WEBAUTH\*  
!IOS Auth Event - Authentication Success  
Oct 9 04:16:55.007: %IOSXE-7-PLATFORM: 1 process wcm: 0021.6a89.51ca Final flag\*  
values are, epmSendAcl 1, epmSendAclDone 0  
Oct 9 04:16:55.007: %IOSXE-7-PLATFORM: 1 process wcm: 0021.6a89.51ca client\*  
incoming attribute size are 43  
:Oct 9 04:16:55.007: %IOSXE-7-PLATFORM: 1 process wcm: 0021.6a89.51ca WEBAUTH\*  
received RADIUS attr type 450  
Oct 9 04:16:55.007: %IOSXE-7-PLATFORM: 1 process wcm: 0021.6a89.51ca Username\*  
entry (0021.6a89.51ca) created for mobile

:Oct 9 04:16:55.007: %IOSXE-7-PLATFORM: 1 process wcm: 0021.6a89.51ca WEBAUTH\*  
Requesting post-auth policy application to EPM  
Oct 9 04:16:55.007: %IOSXE-7-PLATFORM: 1 process wcm: 0021.6a89.51ca Send\*  
request to EPM  
Oct 9 04:16:55.007: %IOSXE-7-PLATFORM: 1 process wcm: 0021.6a89.51ca aaa\*  
attribute list length is 43  
Oct 9 04:16:55.007: %IOSXE-7-PLATFORM: 1 process wcm: 0021.6a89.51ca Sending\*  
Activate request for session handle 268435477 successful  
Oct 9 04:16:55.007: %IOSXE-7-PLATFORM: 1 process wcm: 0021.6a89.51ca Post-auth\*  
policy request sent! Now wait for post-auth policy ACK from EPM  
Oct 9 04:16:55.007: %IOSXE-7-PLATFORM: 1 process wcm: 0021.6a89.51ca Setting the\*  
.epmSendAcldone flag  
Oct 9 04:16:55.007: %IOSXE-7-PLATFORM: 1 process wcm: 0021.6a89.51ca Change state\*  
(to WEBAUTH\_NOL3SEC (14) last state WEBAUTH\_REQD (8  
Oct 9 04:16:55.007: %IOSXE-7-PLATFORM: 1 process wcm: 0021.6a89.51ca\*  
PEM\_UPDATE\_STATE to RUN, EPM POLICY ACK not received yet, moving client to  
AUTHZ\_WAIT state  
Oct 9 04:16:55.007: %IOSXE-7-PLATFORM: 1 process wcm: 0021.6a89.51ca Change state\*  
(to AUTHZ\_WAIT (19) last state WEBAUTH\_NOL3SEC (14  
Oct 9 04:16:55.007: %IOSXE-7-PLATFORM: 1 process wcm: wcdb\_is\_auth\_changed: Client\*  
in AUTHZ\_WAIT state, Not changing WCDB auth state  
Oct 9 04:16:55.007: %IOSXE-7-PLATFORM: 1 process wcm: 0021.6a89.51ca Stopping\*  
(deletion of Mobile Station: (callerId: 74  
Oct 9 04:16:55.007: %IOSXE-7-PLATFORM: 1 process wcm: 0021.6a89.51ca Session\*  
Timeout is 1800 - starting session timer for the mobile  
Oct 9 04:16:55.007: %IOSXE-7-PLATFORM: 1 process wcm: 0021.6a89.51ca 20.20.20.6\*  
AUTHZ\_WAIT (19) Reached PLUMBFASPATH: from line 4289  
Oct 9 04:16:55.007: %IOSXE-7-PLATFORM: 1 process wcm: 0021.6a89.51ca 20.20.20.6\*  
= AUTHZ\_WAIT (19) Replacing Fast Path rule^M on AP c8f9.f983.4260 , slot 1 802.1P  
M^0  
Oct 9 04:16:55.007: %IOSXE-7-PLATFORM: 1 process wcm: 0021.6a89.51ca 20.20.20.6\*  
AUTHZ\_WAIT (19) Successfully plumbed mobile rule  
:Oct 9 04:16:55.007: %IOSXE-7-PLATFORM: 1 process wcm: 0021.6a89.51ca WEBAUTH\*  
callback status - authentication succeeded  
Oct 9 04:16:55.007: %IOSXE-7-PLATFORM: 1 process wcm: PEM rcv processing msg\*  
(Add SCB(3  
,Oct 9 04:16:55.007: %IOSXE-7-PLATFORM: 1 process wcm: 0021.6a89.51ca 20.20.20.6\*  
!!! auth\_state 19 mmRole Local  
,Oct 9 04:16:55.007: %IOSXE-7-PLATFORM: 1 process wcm: 0021.6a89.51ca 20.20.20.6\*  
auth\_state 19 mmRole Local, updating wcdb not needed  
Oct 9 04:16:55.007: %IOSXE-7-PLATFORM: 1 process wcm: 0021.6a89.51ca Tclas Plumb\*  
needed: 0  
Oct 9 04:16:55.008: AUTH-EVENT: Raising ext evt Template Deactivated (10) on\*  
session 0x10000015, client (unknown) (0), hdl 0x00000000, attr\_list 0x5A00033F  
Oct 9 04:16:55.008: AUTH-EVENT: SM will not send event Template Deactivated\*  
to PRE for 0x10000015  
Oct 9 04:16:55.008: %IOSXE-7-PLATFORM: 1 process wcm: EPM: Init feature, client\*  
handle 58b5800000001c session 10000015 authz 1f000015  
Oct 9 04:16:55.008: %IOSXE-7-PLATFORM: 1 process wcm: EPM: Activate feature\*  
client handle 58b5800000001c sess 10000015 authz 1f000015  
Oct 9 04:16:55.008: %IOSXE-7-PLATFORM: 1 process wcm: EPM: Policy\*  
enforcement - client handle 58b5800000001c session 7600000b authz 1f000015  
Oct 9 04:16:55.008: %IOSXE-7-PLATFORM: 1 process wcm: EPM: Netflow policy\*  
enforcement - client handle 58b5800000001c sess 7600000b authz 1f000015 msg\_type 0  
policy\_status 0 attr len 0  
Oct 9 04:16:55.008: %IOSXE-7-PLATFORM: 1 process wcm: PEM rcv processing msg\*  
(Epm spi response(12  
Oct 9 04:16:55.008: %IOSXE-7-PLATFORM: 1 process wcm: 0021.6a89.51ca Received\*  
activate\_features\_resp for client handle 24969359310979100  
Oct 9 04:16:55.008: %IOSXE-7-PLATFORM: 1 process wcm: 0021.6a89.51ca Received\*  
activate\_features\_resp for EPM session handle 268435477  
Oct 9 04:16:55.008: %IOSXE-7-PLATFORM: 1 process wcm: PEM rcv processing msg Epm\*  
(spi response(12  
Oct 9 04:16:55.008: %IOSXE-7-PLATFORM: 1 process wcm: 0021.6a89.51ca Received\*



```
policy_enforcement_response for client handle 24969359310979100
Oct 9 04:16:55.008: %IOSXE-7-PLATFORM: 1 process wcm: 0021.6a89.51ca Received*
policy_enforcement_response for EPM session handle 1979711499
Oct 9 04:16:55.008: %IOSXE-7-PLATFORM: 1 process wcm: 0021.6a89.51ca Received*
response for _EPM_SPI_ACTIVATE_FEATURES request sent for client
Oct 9 04:16:55.008: %IOSXE-7-PLATFORM: 1 process wcm: 0021.6a89.51ca Received*
EPM_SPI_STATUS_SUCCESS for request sent for client_
Oct 9 04:16:55.008: %IOSXE-7-PLATFORM: 1 process wcm: 0021.6a89.51ca Post-auth*
policy ACK recvd from EPM, unset flag on MSCB
Oct 9 04:16:55.008: %IOSXE-7-PLATFORM: 1 process wcm: 0021.6a89.51ca Client in*
AUTHZ_WAIT state, advance to RUN
Oct 9 04:16:55.008: %IOSXE-7-PLATFORM: 1 process wcm: 0021.6a89.51ca Change*
(state to RUN (20) last state AUTHZ_WAIT (19
Oct 9 04:16:55.008: %IOSXE-7-PLATFORM: 1 process wcm: 0021.6a89.51ca*
WCDB_CHANGE: Client 1 m_vlan 20 Radio iif id 0x6025800000000e bssid iif id
0x498f800000001b, bssid c8f9.f983.4260
:Oct 9 04:16:55.009: %IOSXE-7-PLATFORM: 1 process wcm: 0021.6a89.51ca WCDB_AUTH*
Adding opt82 len 0
:Oct 9 04:16:55.009: %IOSXE-7-PLATFORM: 1 process wcm: 0021.6a89.51ca WCDB_LLM*
prev Mob state 1 curr Mob State 1 llReq flag 0
Oct 9 04:16:55.009: %IOSXE-7-PLATFORM: 1 process wcm: 0021.6a89.51ca auth state 4*
mob state 1 setWme 0 wme 1 roam_sent 0
:Oct 9 04:16:55.009: %IOSXE-7-PLATFORM: 1 process wcm: 0021.6a89.51ca WCDB_CHANGE*
auth=RUN(4) vlan 20 radio 1 client_id 0x58b5800000001c mobility=Local(1) src_int
0x45e7800000000c dst_int 0x0 ackflag 2 reassoc_client 0 llm_notif 0 ip 20.20.20.6
ip_learn_type DHCP
Oct 9 04:16:55.009: %IOSXE-7-PLATFORM: 1 process wcm: 0021.6a89.51ca 20.20.20.6*
RUN (20) Reached PLUMBFASPATH: from line 3862
Oct 9 04:16:55.009: %IOSXE-7-PLATFORM: 1 process wcm: 0021.6a89.51ca 20.20.20.6*
RUN (20) Replacing Fast Path rule^M on AP c8f9.f983.4260 , slot 1 802.1P = 0^M
Oct 9 04:16:55.009: %IOSXE-7-PLATFORM: 1 process wcm: 0021.6a89.51ca 20.20.20.6*
RUN (20) Successfully plumbed mobile rule
Oct 9 04:16:55.009: %IOSXE-7-PLATFORM: 1 process wcm: PEM recv processing msg*
(Add SCB(3
,Oct 9 04:16:55.009: %IOSXE-7-PLATFORM: 1 process wcm: 0021.6a89.51ca 20.20.20.6*
!!! auth_state 20 mmRole Local
,Oct 9 04:16:55.009: %IOSXE-7-PLATFORM: 1 process wcm: 0021.6a89.51ca 20.20.20.6*
auth_state 20 mmRole Local, updating wcdb not needed
Oct 9 04:16:55.009: %IOSXE-7-PLATFORM: 1 process wcm: 0021.6a89.51ca Tclas Plumb*
needed: 0
(Oct 9 04:16:55.010: AUTH-EVENT: [0021.6a89.51ca, Cal] Authz complete (SUCCESS*
for client 0021.6a89.51ca/0x10000016 reported
Oct 9 04:16:55.010: AUTH-EVENT: Raised event AUTHZ_SUCCESS (10) on handle*
0x10000016
Oct 9 04:16:55.010: AUTH-EVENT: [0021.6a89.51ca, Cal] Received internal event*
(AUTHZ_SUCCESS (handle 0x10000016
Oct 9 04:16:55.010: AUTH-EVENT: [0021.6a89.51ca, Cal] Processing AUTHZ_CB RESULT*
(success) for 0x10000016)
Oct 9 04:16:55.010: AUTH-EVENT: [0021.6a89.51ca, Cal] Processing SM CB request for*
(0x10000016: Event: Authz result processed (215
,Oct 9 04:16:55.010: AUTH-EVENT: [0021.6a89.51ca, Cal] Authz result processed*
result: 0
,Oct 9 04:16:55.010: WA-SM : Cal [20.20.20.6 ] AAA result procd*
SUCCESS] [NO FAILURE], info hdl 3D00000B, SM hdl 10000016]
:Oct 9 04:16:55.010: AUTH-EVENT: [0021.6a89.51ca, Cal] SM Reauth Plugin*
Client authz change, result=Success
Oct 9 04:16:55.010: AUTH-EVENT: [0021.6a89.51ca, Cal] Signalling Authz complete*
(success) for client 0x10000016)
,[Oct 9 04:16:55.010: WA-HTTPD: Cal [20.20.20.6 ] 50167/0 AAA result [7*
info hdl 3D00000B
Oct 9 04:16:55.010: WA-AAA : Cal [20.20.20.6 ] 50167/0 AAA reply*
Successful
Oct 9 04:16:55.010: WA-STATE: Cal [20.20.20.6 ] State*
AUTHC_SUCCESS -> HTTP_FIN_WAIT
```

```
Oct 9 04:16:55.010: WA-TIMER: Cal [20.20.20.6 ] FIN-wait timer*
                                (start (3 secs
Oct 9 04:16:55.011: WA-PAGE : Cal [20.20.20.6 ] 50167 Sending Consent*
                                [-] logout page, logout [https://192.168.200.1/logout.html] final
Oct 9 04:16:55.011: WA-IO : Cal [20.20.20.6 ] 50167/0 IO state*
                                AUTHENTICATING -> WRITING
,Oct 9 04:16:55.011: WA-IO : Cal [20.20.20.6 ] 50167/0 Write event*
                                buffer addr 0x97577F9C, length 1567, cursor 0
Oct 9 04:16:55.011: WA-IO : Cal [20.20.20.6 ] 50167/0 IO state*
                                WRITING -> END
Oct 9 04:16:55.011: WA-HTTPD: Cal [20.20.20.6 ] 50167/0 Remove IO*
                                ,ctx and close socket
                                [id [3B00002E
Oct 9 04:16:55.011: WA-HTTPD: Cal [20.20.20.6 ] 50167/0 Remove IO*
                                ctx - Closed SSL connection
Oct 9 04:16:55.011: WA-CLNT : Cal [20.20.20.6 ] 50167 Client conn*
                                [timer start [0021.6a89.51ca] ioctx [3B00002E
,Oct 9 04:16:55.017: WA-QLFY : Cal [20.20.20.6 ] Ingress qlfy*
                                Session found, ACL in-place, mac [0021.6a89.51ca], intercept
,Oct 9 04:16:55.017: WA-QLFY : Cal [20.20.20.6 ] Ingress qlfy*
                                Session found, ACL in-place, mac [0021.6a89.51ca], intercept
,Oct 9 04:16:55.017: WA-INFT : Cal [20.20.20.6 ] 50167 TCP FIN*
                                dport 443
Oct 9 04:16:58.010: WA-TIMER: Cal [20.20.20.6 ] FIN-wait timer timeout*
                                Oct 9 04:16:58.010: WA-STATE: Cal [20.20.20.6 ] State*
                                HTTP_FIN_WAIT -> AUTHZ
Oct 9 04:16:58.010: WA-ACL : Cal [20.20.20.6 ] Remove IPv4*
                                intecept ACL via FFM, name
                                IP-Adm-V4-Int-ACL-global", pri 50, IIF 58B5800000001C"
Oct 9 04:16:58.011: WA-ACL : Cal [20.20.20.6 ] Remove IPv6*
                                intecept ACL via FFM, name
                                IP-Adm-V6-Int-ACL-global", pri 52, IIF 58B5800000001C"
Oct 9 04:16:58.011: WA-ACL : Cal [20.20.20.6 ] Add IPv4 logout*
                                ACL via FFM, name
                                IP-Adm-V4-LOGOUT-ACL-1027", pri 51, IIF 58B5800000001C"
Oct 9 04:17:01.354: WA-CLNT : [20.20.20.6 ] 50164 Client conn*
                                [timer exp [0021.6a89.51ca] ioctx [6B00002B
Oct 9 04:17:01.354: WA-CLNT : [20.20.20.6 ] 50164 Client conn*
                                del [0021.6a89.51ca] ioctx [6B00002B] #3
Oct 9 04:17:03.623: WA-CLNT : [20.20.20.6 ] 50165 Client conn timer exp*
                                [0021.6a89.51ca] ioctx [AB00002C]
Oct 9 04:17:03.623: WA-CLNT [20.20.20.6 ] 50165 Client conn del*
                                0021.6a89.51ca] ioctx [AB00002C] #2]
Oct 9 04:17:04.971: WA-CLNT : [20.20.20.6 ] 50166 Client conn*
                                [timer exp [0021.6a89.51ca] ioctx [E300002D
Oct 9 04:17:04.971: WA-CLNT : [20.20.20.6 ] 50166 Client conn*
                                del [0021.6a89.51ca] ioctx [E300002D] #1
Oct 9 04:17:05.012: WA-CLNT : [20.20.20.6 ] 50167 Client conn*
                                [0021.6a89.51ca] ioctx [3B00002E]
Oct 9 04:17:05.012: WA-CLNT : [20.20.20.6 ] 50167 Client conn*
                                del [0021.6a89.51ca] ioctx [3B00002E] #0
```

ةمچرتل هذه لوج

ةللأل تاي نقتل نم ةومچم مادختساب دن تسمل اذه Cisco تچرت  
ملاعلاء انءمچ يف نيمدختسمل معدى وتحم مي دقتل ةيرشبلاو  
امك ةقيد نوك تنل ةللأل ةمچرت لصف أن ةظحال مچرئ. ةصاغل مهتغب  
Cisco يلخت. فرتحم مچرت مامدقي يتل ةيفارتحال ةمچرتل عم لالحل وه  
ىلإ أمئاد عوچرلاب يصوت وتامچرتل هذه ةقد نع اهتيلوئسم Cisco  
Systems (رفوتم طبارلا) يلصلأل يزي لچنلإل دن تسمل