

Ø^ÙfÙ^ÙŠÙ† Ø§Ù,,Ø^Ø³Ø-ÙŠÙ,, Ù^Ø§Ù,,Ø^Ø-Ø-ÙŠØ- Ø§Ù,,Ø^Ù,,Ù,Ø§Ø!ÙŠ Ù,,Ù,,Ø^Ù†Ø§Ø-Ø§Ø^ Ù...Ù† Ø®Ù,,Ø§Ù,, CAPF Online CA

Ø§Ù,,Ù...ØØ^Ù^ÙŠØ§Ø^

- [Ø§Ù,,Ù...Ù,Ø-Ù...Ø©](#)
- [Ø§Ù,,Ù...Ø^Ø-Ù,,Ø^Ø§Ø^ Ø§Ù,,Ø£Ø³Ø§Ø³ÙŠØ©](#)
- [Ø§Ù,,Ù...Ø^Ø-Ù,,Ø^Ø§Ø^](#)
- [Ø§Ù,,Ù...ÙfÙ^Ù†Ø§Ø^ Ø§Ù,,Ù...Ø³Ø^Ø®Ø-Ù...Ø©](#)
- [Ù...Ø^Ù,,Ù^Ù...Ø§Ø^ Ø£Ø³Ø§Ø³ÙŠØ©](#)
- [Ø§Ù,,Ø^ØÙ,,Ù, Ù...Ù† Ø®Ø© Ù^Ù,Ø^ Ø§Ù,,Ø®Ø§Ø-Ù... Ù^Ø^Ø§Ø±ÙŠØ®Ù†
Ø^ØØ-ÙŠØ« Ø§Ø³Ù... ÙfÙ...Ø^ÙŠÙ^Ø^Ø± Ø§Ù,,Ø®Ø§Ø-Ù...](#)
- [Ø§Ù,,Ø^ÙfÙ^ÙŠÙ†](#)
- [Ù,Ø§Ù,,Ø^ Ø®Ø-Ù...Ø§Ø^ Ø§Ù,,Ø¥Ø^Ù,,Ø§Ù†Ø§Ø^ Ù^Ø§Ù,,Ù...Ø³Ø^Ø®Ø-Ù... Ù^Ø§Ù,,Ø^Ù†Ø§Ø-Ø©](#)
- [Ù...Ø®Ø§Ø-Ù,Ø© IIS Ù^Ø^ÙfÙ^ÙŠÙ† Ø±Ø^Ø. SSL](#)
- [Ø^ÙfÙ^ÙŠÙ† CUCM](#)
- [Ø§Ù,,Ø^ØÙ,,Ù, Ù...Ù† Ø§Ù,,Ø®Ø©](#)
- [Ø§Ù,,Ø^ØÙ,,Ù, Ù...Ù† Ø^Ù†Ø§Ø-Ø§Ø^ IIS](#)
- [Ø§Ù,,Ø^ØÙ,,Ù, Ù...Ù† Ø^ÙfÙ^ÙŠÙ† CUCM](#)
- [Ø±Ù^Ø§Ø-Ø. Ø^Ø§Ø^ Øµ,,Ø©](#)

Ø§Ù,,Ù...Ù,Ø-Ù...Ø©

ÙŠØµ ♦ Ù†Ø°Ø§ Ø§Ù,,Ù...Ø³Ø^Ù†Ø- Ø§Ù,,Ø^Ø³Ø-ÙŠÙ,, Ù^Ø§Ù,,Ø^Ø-Ø-ÙŠØ-
Ø§Ù,,Ø^Ù,,Ù,Ø§Ø!ÙŠ Ù,,Ù,,Ø^Ù†Ø§Ø-Ø§Ø^ Ù...Ù† Ø®Ù,,Ø§Ù,, Ù...ÙŠØ²Ø© "Ù^Ø,ÙŠÙ ♦ Ø©
Ù^ÙfÙŠÙ,, Ø§Ù,,Ù...Ø±Ø-Ø¹ Ø§Ù,,Ù...ØµØ-Ù, (CAPF)" Ø¹Ø^ Ø± Ø§Ù,,Ø¥Ù†Ø^Ø±Ù†Ø^ Ù,, Cisco
Unified Communications Manager (CUCM).

Ø³Ø§Ù†Ù... Ø^Ù† Ù...Ø§ÙŠÙfÙ,, Ù...Ù†Ø-Ù^Ø²Ø§ØÆ Ù...Ù†Ù†Ø-Ø³ Ù...Ø±ÙfØ²
Ø§Ù,,Ù...Ø³Ø§Ø¹Ø-Ø© Ø§Ù,,Ù ♦ Ù†ÙŠØ© Ù...Ù† Cisco.

Ø§Ù,,Ù...Ø^Ø-Ù,,Ø^Ø§Ø^ Ø§Ù,,Ø£Ø³Ø§Ø³ÙŠØ©

Ø§Ù,,Ù...Ø^Ø-Ù,,Ø^Ø§Ø^

Ø^Ù^ØµŠ Cisco Ø^Ø£Ù† Ø^ÙfÙ^Ù† Ù,,Ø-ÙŠÙf Ù...Ø¹Ø±Ù ♦ Ø© Ø^ Ø§Ù,,Ù...Ù^Ø§Ø¶ÙŠØ¹
Ø§Ù,,Ø^Ø§Ù,,ÙŠØ©:

- Ù...Ø-ÙŠØ± Ø§Ù,,Ø§Ø^Ø§Ù,,Ø§Ø^ Ø§Ù,,Ù...Ù^ØØ-Ø© Ù...Ù† Cisco
- Ø^Ù†Ø§Ø-Ø§Ø^ X.509
- Ø®Ø§Ø-Ù... Windows
- Windows Active Directory (AD)
- Ø®Ø-Ù...Ø§Ø^ Ù...Ø¹Ù,,Ù^Ù...Ø§Ø^ Ø§Ù,,Ø¥Ù†Ø^Ø±Ù†Ø^ Ù,, Windows (IIS)
- Ù...Ø®Ø§Ø-Ù,Ø© Ù...Ø-ÙŠØ± LAN (NTLM) NT (Ø§Ù,,Ø^Ù,Ù†ÙŠØ© Ø§Ù,,Ø-Ø-ÙŠØ-Ø©)

Ø§Ù,,Ù...ÙfÙ^Ù†Ø§Øª Ø§Ù,,Ù...Ø³ØªØ®Ø-Ù...Ø©

ØªØ³ØªÙ†Ø- Ø§Ù,,Ù...Ø¹Ù,,Ù^Ù...Ø§Øª Ø§Ù,,Ù^Ø§Ø±Ø-Ø© Ù❖ÙŠ Ù‡Ø°Ø§ Ø§Ù,,Ù...Ø³ØªÙ†Ø- Ø¥Ù,,Ù% Ø¥ØµØ-Ø§Ø±Ø§Øª Ø§Ù,,Ø-Ø±Ø§Ù...Ø- Ù^Ø§Ù,,Ù...ÙfÙ^Ù†Ø§Øª Ø§Ù,,Ù...Ø§Ø-ÙŠØ© Ø§Ù,,ØªØ§Ù,,ÙŠØ©:

- CUCM Ø§Ù,,Ø¥ØØ-Ø§Ø± 12.5.1.1000-22
- Ù†Ø,Ø§Ù... Ø§Ù,,ØªØ-Ø°ÙŠÙ,, Windows Server 2012 R2
- Ù‡Ø§ØªÙ❖ IP Ø-Ø±Ø§Ø² CP-8865 / Ø§Ù,,Ø-Ø±Ù†Ø§Ù...Ø- Ø§Ù,,Ø«Ø§Ø-Øª: Ø-Ø±Ù^ØªÙ^ÙfÙ^Ù,, SIP 12-1-1SR1-4 Ù^12-5-1SR2.

ØªÙ... Ø¥Ù†Ø-Ø§Ø; Ø§Ù,,Ù...Ø¹Ù,,Ù^Ù...Ø§Øª Ø§Ù,,Ù^Ø§Ø±Ø-Ø© Ù❖ÙŠ Ù‡Ø°Ø§ Ø§Ù,,Ù...Ø³ØªÙ†Ø- Ù...Ù† Ø§Ù,,Ø£Ø-Ù‡Ø²Ø© Ø§Ù,,Ù...Ù^Ø-Ù^Ø-Ø© Ù❖ÙŠ Ø-ÙŠØ|Ø© Ù...Ø¹Ù...Ù,,ÙŠØ© Ø®Ø§ØµØ©. Ø-Ø-Ø£Øª Ø-Ù...ÙŠØ¹ Ø§Ù,,Ø£Ø-Ù‡Ø²Ø© Ø§Ù,,Ù...Ù❖Ø³ØªØ®Ø-Ù...Ø© Ù❖ÙŠ Ù‡Ø°Ø§ Ø§Ù,,Ù...Ø³ØªÙ†Ø- Ø-ØªÙfÙ^ÙŠÙ† Ù...Ù...Ø³Ù^Ø (Ø§Ù❖ØªØ±Ø§Ø¶ÙŠ). Ø¥Ø°Ø§ ÙfØ§Ù†Øª Ø-Ø-ÙfØªÙf Ù,ÙŠØ- Ø§Ù,,ØªØ-Ø°ÙŠÙ,,Ø© Ù❖ØªØ£ÙfØ- Ù...Ù† Ù❖Ù‡Ù...Ùf Ù,,Ù,,ØªØ£Ø«ÙŠØ± Ø§Ù,,Ù...ØªÙ...Ù,, Ù,,Ø£ÙŠ Ø£Ù...Ø±.

Ù...Ø¹Ù,,Ù^Ù...Ø§Øª Ø£Ø³Ø§Ø³ÙŠØ©

ÙŠØ°·ÙŠ Ù‡Ø°Ø§ Ø§Ù,,Ù...Ø³ØªÙ†Ø- ØªÙfÙ^ÙŠÙ† Ø§Ù,,Ù...ÙŠØ²Ø© Ù^Ø§Ù,,Ù...Ù^Ø§Ø±Ø- Ø°Ø§Øª Ø§Ù,,Øµ,,Ø© Ù,,Ù,,ØØµ^Ù,, Ø¹Ù,,Ù% Ø£Ø-Ø§Ø§Ø« Ø¥Ø¶Ø§Ù❖ÙŠØ©.

Ø§Ù,,ØªØÙ,,Ù, Ù...Ù† ØØØ© Ù^Ù,,Øª Ø§Ù,,Ø®Ø§Ø-Ù... Ù^ØªØ§Ø±ÙŠØ®Ù‡

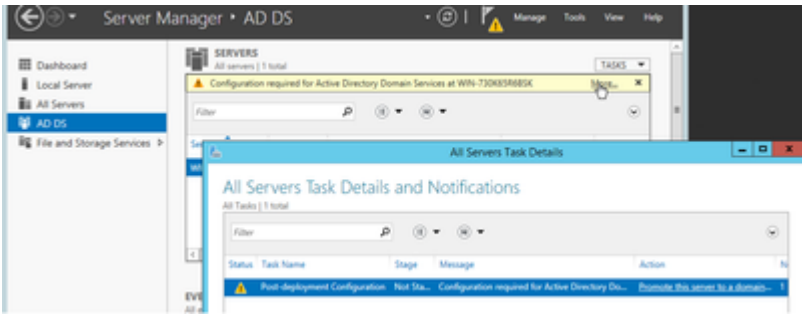
ØªØ£ÙfØ- Ù...Ù† Ø£Ù† Ø®Ø§Ø-Ù... Windows ÙŠØªÙ^ÙŠ Ø¹Ù,,Ù% Ø§Ù,,ØªØ§Ø±ÙŠØ® Ù^Ø§Ù,,Ù^Ù,,Øª Ù^Ø§Ù,,Ù...Ù†Ø·Ù,,Ø© Ø§Ù,,Ø²Ù...Ù†ÙŠØ© Ø§Ù,,ØØÙŠØØ© Ø§Ù,,ØªÙŠ ØªÙ... ØªÙfÙ^ÙŠÙ†Ù‡Ø§ Ù,,Ø£Ù†Ù‡Ø§ ØªØ«Ø«Ø± Ø¹Ù,,Ù% Ø£Ù^Ù,,Ø§Øª Ø§Ù,,Øµ,,Ø§ØÙŠØ© Ù,,Ø-Ù‡Ø§Ø-Ø© Ø§Ù,,Ù...Ø±Ø-Ø¹ Ø§Ù,,Ù...ØØ-Ù, (CA) Ø§Ù,,Ø-Ø°Ø± Ø§Ù,,Ø®Ø§ØØ© Ø-Ø§Ù,,Ø®Ø§Ø-Ù... Ø-Ø§Ù,,Ø¥Ø¶Ø§Ù❖Ø© Ø¥Ù,,Ù% Ø§Ù,,Ø'Ù‡Ø§Ø-Ø§Øª Ø§Ù,,ØªÙŠ ØªÙ... Ø¥ØµØ-Ø§Ø±Ù‡Ø§ Ù...Ù†Ù‡.

ØªØØ-ÙŠØ« Ø§Ø³Ù... ÙfÙ...Ø-ÙŠÙ^ØªØ± Ø§Ù,,Ø®Ø§Ø-Ù...

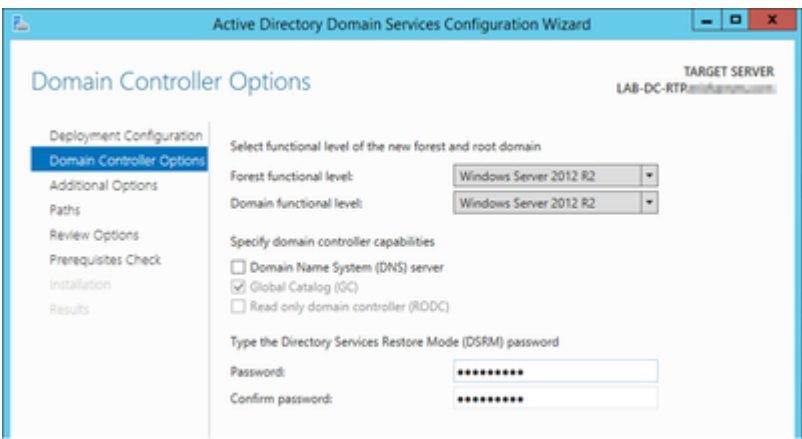
Ø-Ø-ÙfÙ,, Ø§Ù❖ØªØ±Ø§Ø¶ÙŠØ© Ø§Ø³Ù... ÙfÙ...Ø-ÙŠÙ^ØªØ± Ø§Ù,,Ø®Ø§Ø-Ù... Ù,,Ù‡ Ø§Ø³Ù... Ø¹Ø-Ù^Ø§Ø|ÙŠ Ù...Ø«Ù,, WIN-730K65R6BSK. Ø£Ù^Ù,, Ø'ÙŠØ; ÙŠØ-Ø- Ø§Ù,,Ù,ÙŠØ§Ù... Ø-Ù‡ Ù,,Ø-Ù,, ØªÙ...ÙfÙŠÙ† Ø®Ø-Ù...Ø§Øª Ù...Ø-Ø§Ù,, AD Ù‡Ù^ Ø§Ù,,ØªØ£ÙfØ- Ù...Ù† ØªØØ-ÙŠØ« Ø§Ø³Ù... ÙfÙ...Ø-ÙŠÙ^ØªØ± Ø§Ù,,Ø®Ø§Ø-Ù... Ø¥Ù,,Ù% Ù...Ø§ ØªØ±ÙŠØ- Ø£Ù† ÙŠÙfÙ^Ù† Ø§Ø³Ù... Ø§Ù,,Ù...Ø¶ÙŠÙ❖ Ù^Ø§Ø³Ù... Ù...ØµØ-Ø± CA Ø§Ù,,Ø-Ø°Ø± Ù,,Ù,,Ø®Ø§Ø-Ù... Ø-Ù†Ù‡Ø§ÙŠØ© Ø§Ù,,ØªØ«Ø-ÙŠØªØ© Ù^Ø¥Ù,,Ø§ Ù❖Ø¥Ù†Ù‡ ÙŠØªØ·Ù,,Ø- Ø§Ù,,ÙfØ«ÙŠØ± Ù...Ù† Ø§Ù,,Ø®Ø-Ù^Ø§Øª Ø§Ù,,Ø¥Ø¶Ø§Ù❖ÙŠØ© Ù,,ØªØ°ÙŠÙŠØ± Ù‡Ø°Ø§ Ø-Ø¹Ø- ØªØ«Ø-ÙŠØª Ø®Ø-Ù...Ø§Øª AD.

- Ø§Ù†ØªÙ,,Ù,, Ø¥Ù,,Ù% Ø§Ù,,Ø®Ø§Ø-Ù... Ø§Ù,,Ù...ØÙ,,ÙŠØ© ØØ-Ø- Ø§Ø³Ù... Ø§Ù,,ÙfÙ...Ø-ÙŠÙ^ØªØ± Ù,,Ù❖ØªØ Ø®Ø¶Ø§Ø;ØµØ§Ù,,Ù†Ø,Ø§Ù... ØØ-Ø- Ø²Ø± Ø§Ù,,ØªØ°ÙŠÙŠØ± Ù^Ø§ÙfØªØ- Ø§Ø³Ù... Ø§Ù,,ÙfÙ...Ø-ÙŠÙ^ØªØ± Ø§Ù,,Ø-Ø-ÙŠØ-

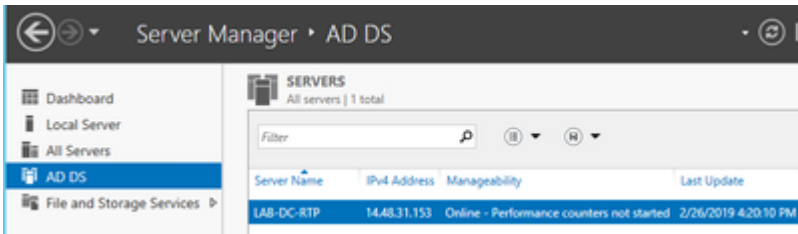
- ØªØ¸Ù‡Ø± Ø¹Ù,,Ø§Ù...Ø© Ø§Ù,,ØªØ·Ù^ÙšØ· "ØªØ°ÙšØ±" ØªØª **Server Manager > AD DS** Ù...Ø¹ "ØªÙfÙ^ÙšÙ† Ø§Ù,,Ø¹Ù†Ù^Ø§Ù†" Ø§Ù,,Ù...Ø·Ù,,Ù^Ø· Ù,, "Ø©Ø-Ù...Ø§Øª Ù...Ø-Ø§Ù,, Active Directory"Øœ ØØ-Ø- Ø§Ù,,Ù...Ø²ÙšØ- Ù...Ù† Ø§Ù,,Ø§Ø±ØªØ·Ø§Ø-Ø§Øª Ø«Ù... ÙšØªÙ^Ù ♦Ø± Ø§Ù,,Ø¥Ø-Ø±Ø§Ø¡ Ù,,Ø· Ø-Ø¡ Ù...Ø¹Ø§Ù,,Ø- Ø§Ù,,Ø¥Ø¹Ø-Ø§Ø-



- Ø§ØªØ·Ø¹ Ø§Ù,,Ù...Ø-Ø§Ù,,Ø·Ø§Øª Ù ♦Ùš Ù...Ø¹Ø§Ù,,Ø- Ø¥Ø¹Ø-Ø§Ø- Ø§Ù,,Ù...Ø-Ø§Ù,,Øœ Ù^Ù,,Ù... Ø·Ø¥Ø¶Ø§Ù ♦Ø© Ø°Ø§Ø· Ø© Ø-Ø-ÙšØ-Ø© Ø·Ø§Ø³Ù... Ø§Ù,,Ù...Ø-Ø§Ù,, Ø§Ù,,Ø-Ø°Ø± Ø§Ù,,Ù...Ø±Ø^Ø· (ÙšØ³ØªØ©Ø-Ù... michamen.com Ù,,Ù‡°Ø§ Ø§Ù,,Ù...Ø®ØªØ·Ø±) Ù^Ù,,Ù... Ø·Ø¥Ù,,Ø°Ø§Ø¡ ØªØØ-ÙšØ- Ù...Ø±Ø·Ø¹ DNS Ø¹Ù†Ø- ØªÙ^Ù ♦Ø±Ù‡Øœ Ù,,Ù... Ø· ØªØ¹Ø±ÙšÙ ♦ ÙfÙ,,Ù...Ø© Ù...Ø±Ù^Ø± DSRM (ØªØ³ØªØ©Ø-Ù... C1sc0123! Ù,,Ù‡°Ø§ Ø§Ù,,Ù...Ø®ØªØ·Ø±):

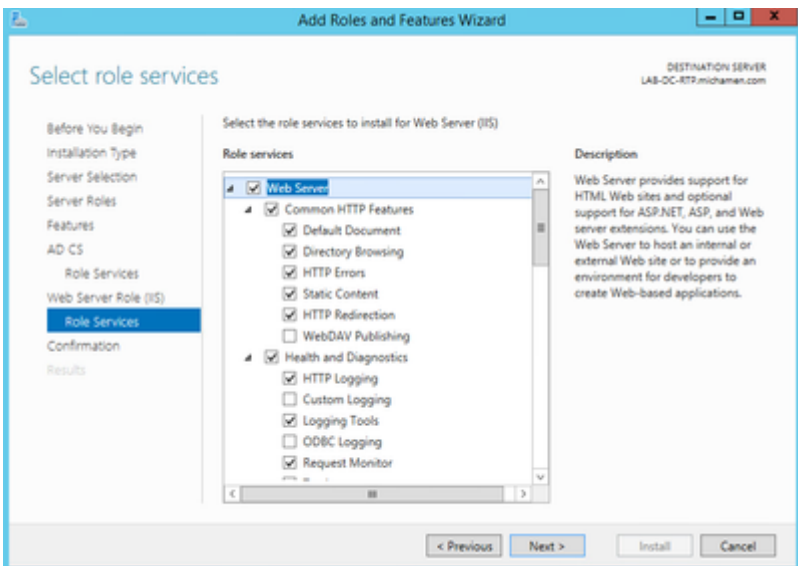
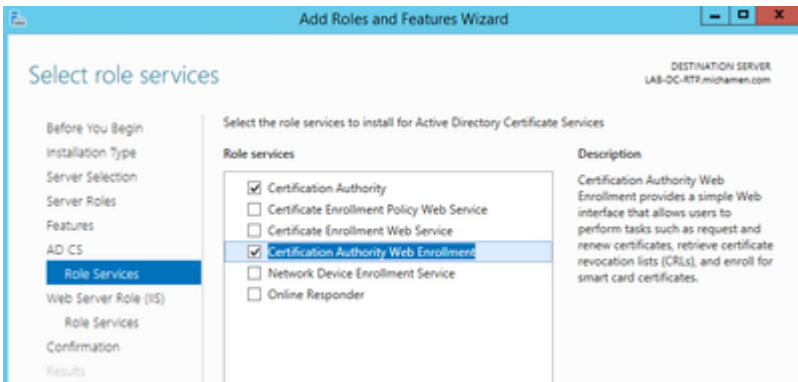


- Ø§Ù,,ØØ§Ø-Ø© Ø¥Ù,,Ù% ØªØØ-ÙšØ- Ø§Ø³Ù... Ù...Ø-Ø§Ù,, NetBIOS (ÙšØ³ØªØ©Ø-Ù... MICHAMEN1 Ù ♦Ùš Ù‡°Ø§ Ø§Ù,,Ù...Ø®ØªØ· Ø±).
- Ø§ØªØ·Ø¹ Ø§Ù,,Ù...Ø¹Ø§Ù,,Ø- Ø¥Ù,,Ù% Ø§Ù,,Ø§ÙfØªÙ...Ø§Ù,, Ø«Ù... ÙšÙ,,Ù^Ù... Ø§Ù,,Ø©Ø§Ø-Ù... Ø·Ø¥Ø¹Ø§Ø-Ø© Ø§Ù,,ØªØ·Ø¹ÙšÙ,, Ù,,Ø¥ÙfÙ...Ø§Ù,, Ø§Ù,,ØªØ«Ø·ÙšØª.
- Ø«Ù... ÙšØ-Ø· ØªØØ-ÙšØ- Ø§Ø³Ù... Ø§Ù,,Ù...Ø-Ø§Ù,, Ø§Ù,,Ø-Ø-ÙšØ- Ø¹Ù†Ø- ØªØ³Ø-ÙšÙ,, Ø§Ù,,Ø-Ø©Ù^Ù,, Ù ♦Ùš Ø§Ù,,Ù...Ø±Ø© Ø§Ù,,Ù,,Ø§Ø-Ù...Ø©. Ø¹Ù,,Ù% Ø³Ø· ÙšÙ,, Ø§Ù,,Ù...Ø«Ø§Ù,,Øœ MICHAMEN1\Administrator.

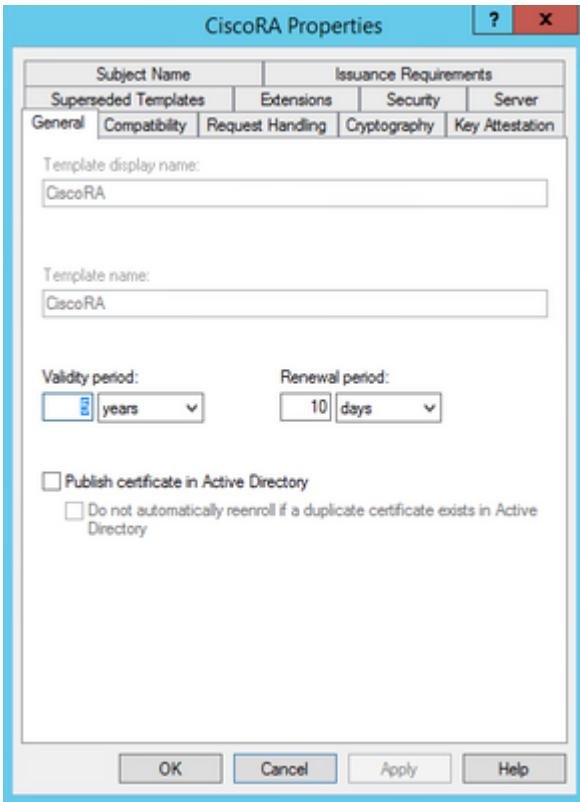


0^U...UfUŠU† 0@0-U...0\$0^ 0\$U,,0-U‡0\$0-0\$0^ U^0^UfUŠU†U‡0\$

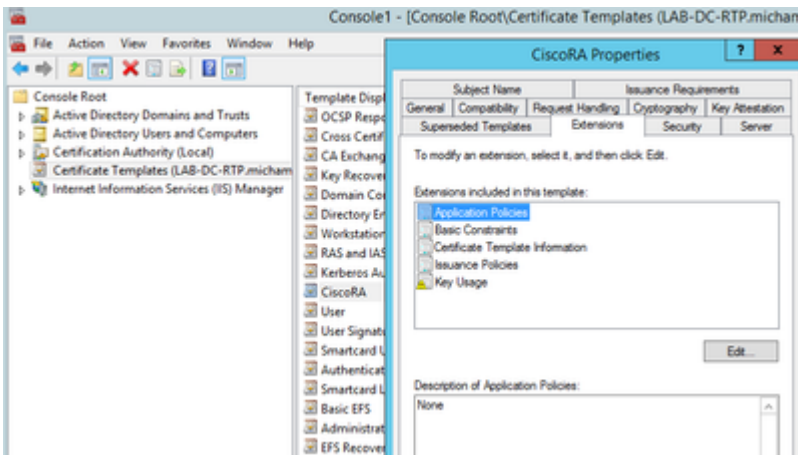
- U^UŠ U...0-UŠ0± 0\$U,,0@0\$0-U... 00-0- 0¥0¶0\$U^0@ 0E0-U^0\$0± U^U...UŠ0^0\$0^
- 00-0- "0@0-U...0\$0^ 0-U‡0\$0-0\$0^ Active Directory" U^0\$0^0^0^ 0\$U,,U...0-0\$U,,0^0\$0^ U,,0¥0¶0\$U^0@ 0\$U,,U...UŠ0^0\$0^ 0\$U,,U...0-U,,U^0- 0@ (0^U... 0^00-UŠ0- 0-U...UŠ0^ 0\$U,,U...UŠ0^0\$0^ 0\$U,,U...0^U-U^0±0@ U...U† 0@0-U...0\$0^ 0\$U,,0-U^0± 0\$U,,0^UŠ 0^U... 0^U...UfUŠU†U‡0\$ U,,U‡0^0\$ 0\$U,,U...0@0^0- 0±)
- 0^0^0-UŠU,, U^UŠ0- U,, Role Services Check Certificate Authority



- UŠ0-0- 0£U† 0^0- U‡0± 0^U,,0\$U...0@ 0^0-U-UŠ0- 0\$U,,0^00-UŠ0± 0^00^ 0¥0-0\$0±0@ 0\$U,,0@0\$0-U... >AD DS U...0^ 0^U‡UŠ0^0@ 0\$U,,0^U†U^0\$U† 0\$U,,U...0-U,,U^0-0@ U,,0@0-U...0\$0^ 0-U‡0\$0-0\$0^ Active Directory0E 00-0- 0\$U,,0\$0±0^0-0\$0- 0\$U,,0£Uf0«0± 0«U... 0\$U,,0¥0-0±0\$0; 0\$U,,U...0^0\$0:



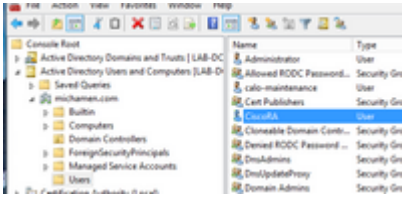
- ØØ-Ø- Ø¹Ù,,Ø§Ù...Ø© Ø§Ù,,ØªØ·Ù¹ÙŠØ· Ø§Ù,,Ù...Ù,,ØÙ,,Ø§ØªØÆ Ù,,Ù... Ø·ØªÙ...ÙŠÙŠØ² Ù†Ù‡Ø- Ø§Ù,,ØªØ·Ù¹ÙŠÙ,,ØÆ Ø«Ù... ØØ-Ø- ØªØØ±ÙŠØ±



- Ø£Ø²Ù,,Øª Ø£ÙŠ Ù†Ù‡Ø- Ø£Ù† ÙŠÙ†Ù¹Ù† Ù...Ø¹Ø±Ù¹Ø¶ Ù«ÙŠ Ø§Ù,,Ù†Ø§Ù«Ø°Ø© Ø£Ù† ÙŠØÙ†Ø±
- ØØ-Ø- Ø¹Ù,,Ø§Ù...Ø© Ø§Ù,,ØªØ·Ù¹ÙŠØ· Ø§Ø³Ù... Ø§Ù,,Ù...Ù¹Ø¶Ù¹Ø¹ Ù¹ØØ-Ø- Ø²Ø± Ø§Ù,,ØªÙ¹ÙŠØ- Ù«ÙŠ Ø·Ù,,Ø· Ø§Ù,,Ø§Ø®ØªÙŠØ§Ø±
- ØØ-Ø- Ø¹Ù,,Ø§Ù...Ø© Ø§Ù,,ØªØ·Ù¹ÙŠØ· Ø§Ù,,Ø£Ù...Ø§Ù† Ù¹Ù...Ù†Ø Ø-Ù...ÙŠØ¹ Ø§Ù,,Ø£Ø²Ù¹Ù†Ø§Øª Ù,,Ø-Ù...ÙŠØ¹ Ø§Ù,,Ù...Ø-Ù...Ù¹Ø¹Ø§Øª/Ø£Ø³Ù...Ø§Ø¶; Ø§Ù,,Ù...Ø³ØªØ®Ø-Ù...ÙŠÙ† Ø§Ù,,ØªÙŠ ÙŠØªÙ... Ø¹Ø±Ø¶Ù‡Ø§

0850,,08030... 0^0850,,0+0^0^1 0^0850,,0^0μ0

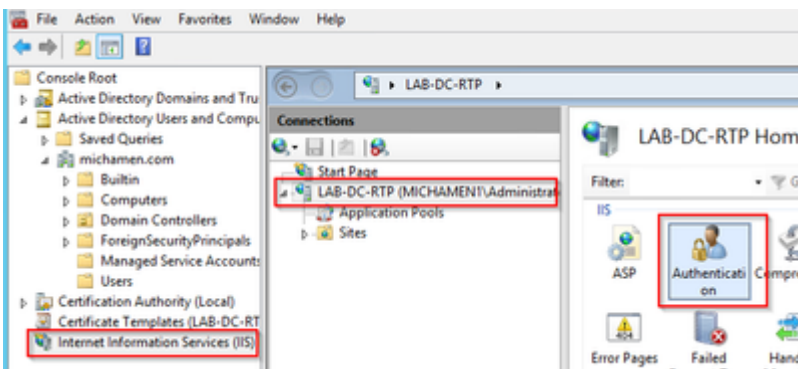
- 0^00-0š0- 0-0-0š0- 0- 0...0^0^000-0-0...
- 0,0... 0^0850+0^0850; 00^0850 CiscoRA 0^08500^0... 0850,,0...0^0^000-0-0.../0f0,,0...00 0850,,0...0+0^0± (0^0... 0850^0^000-0850... Cisco/Cisco123 0,,0+0^0850 0850,,0...000^0^0±) 0^00-0- 000850+00 0850,,0850000^0š0850± 0f0,,0...00 0850,,0...0+0^0± 0,,0850 0^0+0^0^0š 0850-0-0850 0^0+0-0...0850 0š0^0... 0^0±0^0+0850



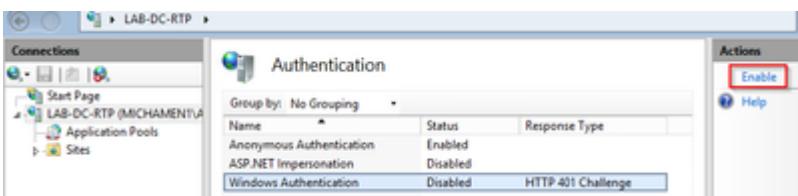
IIS 0^0f0^0š0+ 0850,,0...00850-0,00 0^0±0^0-0- SSL

0^0...0f0š0+ 0+0^0,,0... 0850,,0...00850-0,00

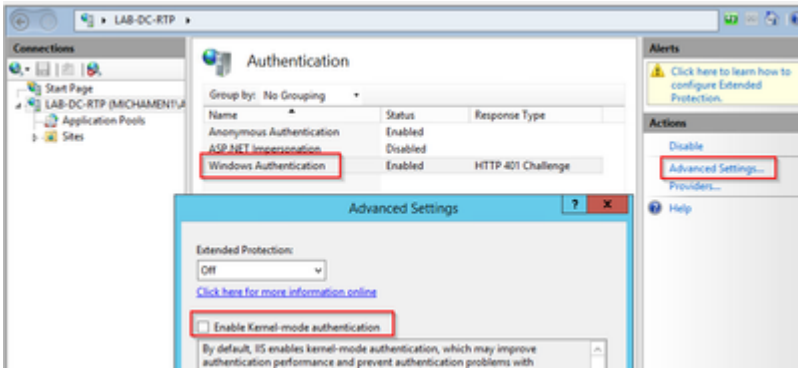
- 0850+0^0,0,, 0850,,0%0 0850,,0850-0^0850^0 0850,,0850+0850 0š00 MMC 0«0... 00-0- 0850^0... 0850,,000850-0... 0850,,000850μ 0^0f 0^0+0...0+ 0850,,0850-08500 0850,,0850+0850 0š00 0,,0850-0850±00 000-0...0850^0 0...0^0,,0^0...0850^0 0850,,0850+0^0±0+0^0 (IIS)
- 0^0,0+0± 0,0850+0...00 0850,,0...0š0^0850^0 0š0š 0850,,0850-0850± 0850,,0^0850,,0š. 0850+0,0± 0+0,0±0850 0...0^0-0-0850 0^0,,0%0 0±0...0^2 0...0š0^00 0850,,0...00850-0,00



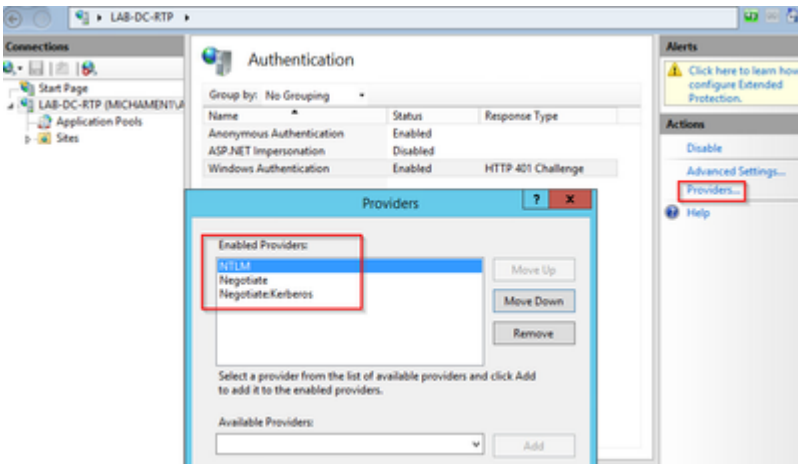
- 0,0... 0^0850-0±0850^2 0...00850-0,00 **Windows** 0^0...0+ 0850-0850± 0850,,0850-0±0850;0850^0 (0850,,0,,0-000 0850,,0š0...0+0%0) 00-0- 000š0850± 0850,,0^0...0f0š0+



- 0š0^0±0^0 0-0^0; 0850,,0850-0±0850;0850^0 000š0850± 0850,,0850-0850-0850^0 0850,,0...0^0,0-0...0000 0š00-0-0+ 0^0š0,,0^0š 0^00-0š0- 0^0...0f0š0+ 0...00850-0,00 0^0^0^0 **kernel**



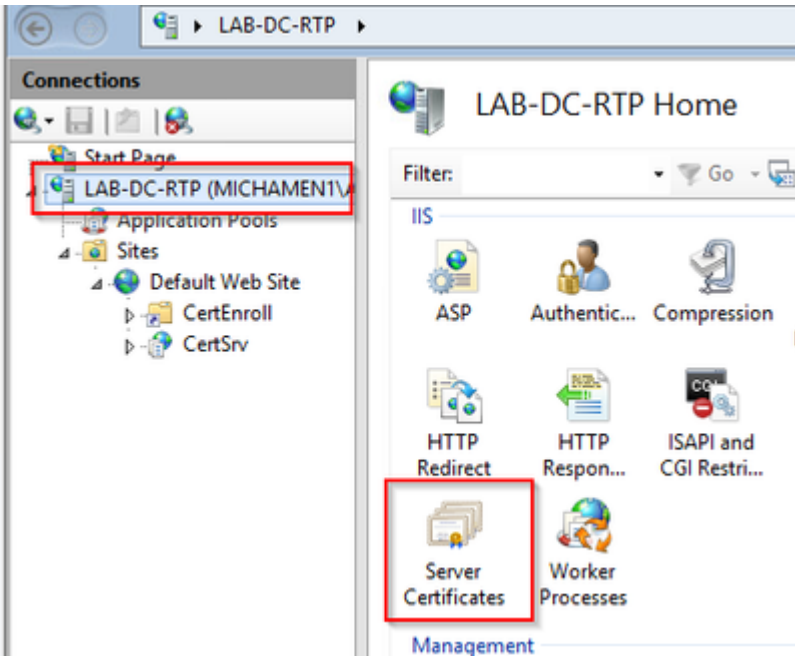
- 00-0-0\$U,,U...U^U 0±UŠU† 0«U... 0¶0¹ 0ª0±0ªUŠ0· NTML 0«U... 0ªU 0\$U^0¶.



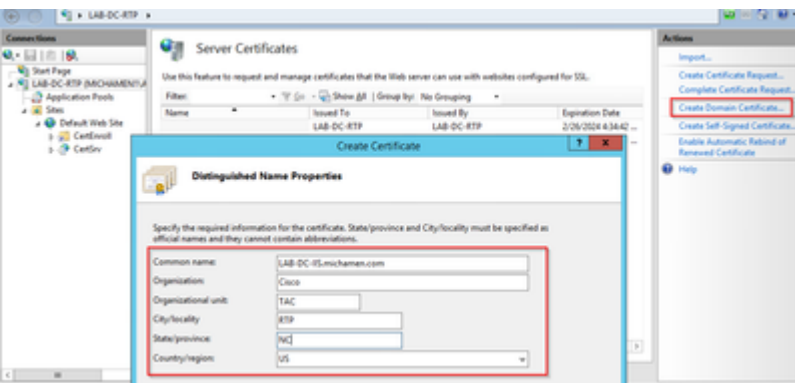
0YU†0'0\$0; 0'U‡0\$0-0© U‡U^UŠ0© U,,0@0\$0-U... U^UŠ0·

0YU† U,,U... 0ªUfU† 0\$U,,0\$U,,0© U...U^U-U^U-0© 0'0\$U,,U 0¹U,,0E UŠU,,0²U...Uf 0YU†0'0\$0; 0'U‡0\$0-0© U‡U^UŠ0© U,,0@0-U...0© 0\$U,,U^UŠ0· 0\$U,,0@0\$0µ0© 0'Uf 0\$U,,U...U^U,0¹0© U...U† U,0'U,, CA U,,0E U† CiscoRA 0°UŠ0± U,0\$0-0±0© 0¹U,,U%0 0\$U,,0\$0ª0µ0\$U,, 0'U‡0\$ 0Y0°0\$ Uf0\$U†0ª 0'U‡0\$0-0© 0@0\$0-U... 0\$U,,U^UŠ0· U...U^U,0¹0© 0°0\$0ªUŠ0\$:

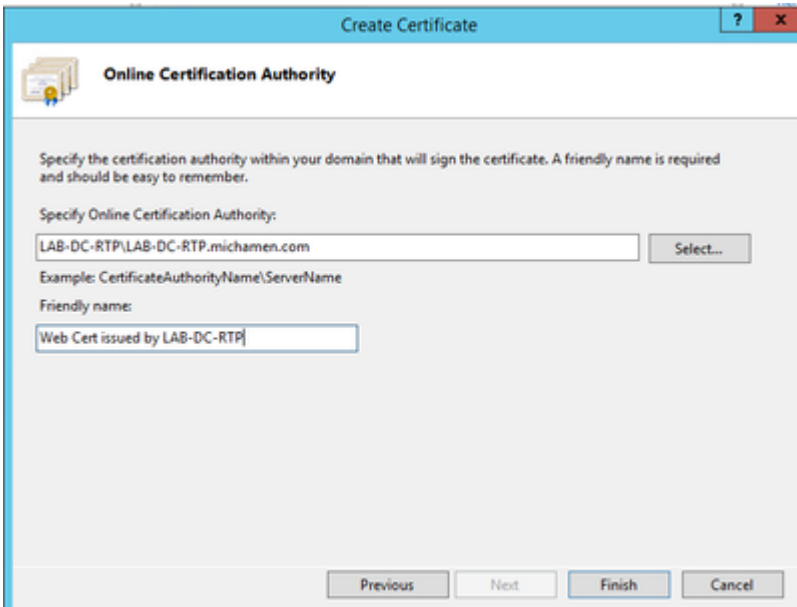
- 00-0-0@0\$0-U... 0\$U,,U^UŠ0· 0\$U,,0@0\$0µ0'Uf U...U† 0\$U,,0E-0\$0© 0\$U,,0Y0¶0\$U 0¹UŠ0© IIS U'0\$U†U,0± U†U,0±0\$ U...0²0-U^U-0\$ 0¹U,,U%0 0E UŠU,,U^U†0© U...UŠ0²0© 0'U‡0\$0-0\$0ª 0\$U,,0@0\$0-U...:



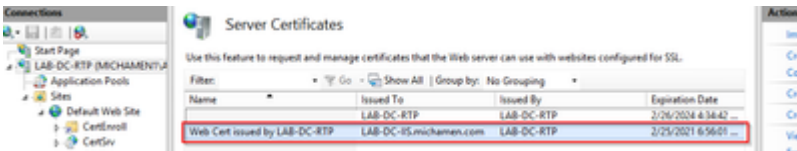
- 0-0-0-f0,, 0\$0-0±0\$00||0\$00E 0\$0...0f0+0f 0E0+ 0°0±0%0 0'0±0\$0-00 0^0\$00-00 0...0-0±0-00 0±0+0\$0f0E 0^0±0\$ 0\$0,,0...0±0-0' 0\$0,,0...000-0,, 0\$0,,0-0°0± 0\$0,,0...0^0,0' 0°0\$0°0\$0\$0E 0^0...0+ 0,0\$0!0...00 0\$0,,0\$0-0±0\$0;0\$0° 00-0- 0\$0,,000\$0\$0± 0\$0+0'0\$0; 0'0±0\$0-00 0...0-0\$0,, 0\$0-000,, 0\$0,,0,0\$0... 0-0\$0 0...0'0\$0,,0- 0\$0,,0°0f0^0\$0+ 0,,0\$0+0'0\$0; 0\$0,,0'0±0\$0-00 0\$0,,0-0-0\$0-00. 0°0E0f0- 0...0+ 0E0+ 0\$0,,0\$0³0... 0\$0,,0'0\$0!0' 0±0^ FQDN 0,0\$0-0,, 0,,0,,00,, (0\$0³0... 0...0-0\$0,, 0...0±0±0,, 0' 0\$0,,0f0\$0...0,,) 0«0... 00-0- 0\$0,,0°0\$0,,0\$0:



- 00-0- 0'0±0\$0-00 0\$0,,0...0±0-0' 0\$0,,0...00-0,, 0\$0,,0-0°0± 0\$0,,000\$000 0'0f 0,,0°0f0^0+ 0\$0,,0...00-0± 0-00-0- 0\$0+0'0\$0;

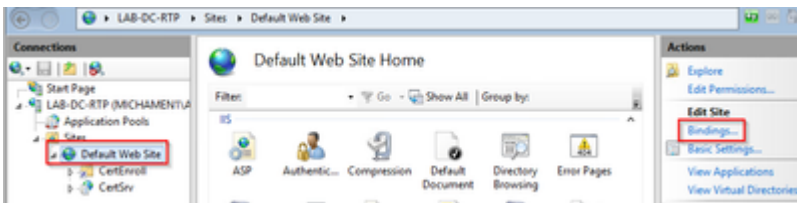


- ðšð...ðfð†ðf ð£ð† ðªð±ð% ðfð,,ðš ð...ð† ð´ð‡ðšð-ð© CA ð´ð´ð‡ðšð-ð© ðªð¹ð±ðšð ððððð-ð... ðšð,,ð´ðšð´ ð...ð-ð±ð-ð©:

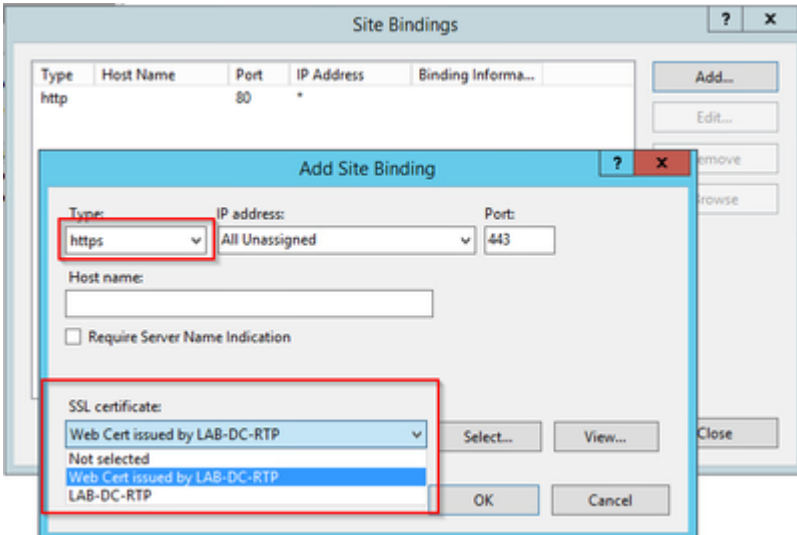


ð±ð´ð· SSL ð,,ððððð-ð... ðšð,,ð´ðšð´

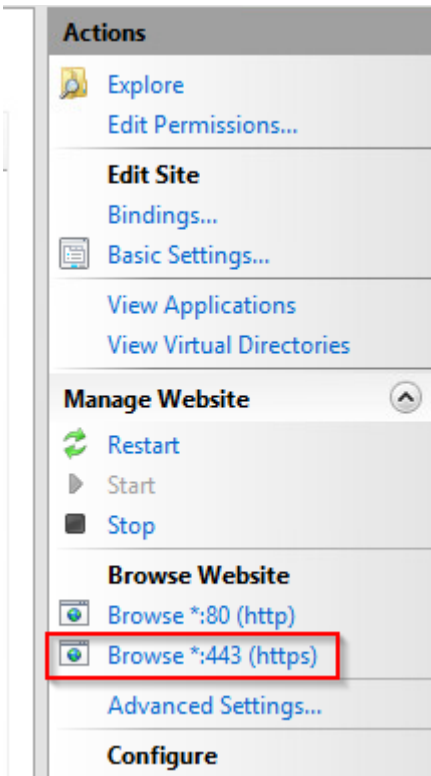
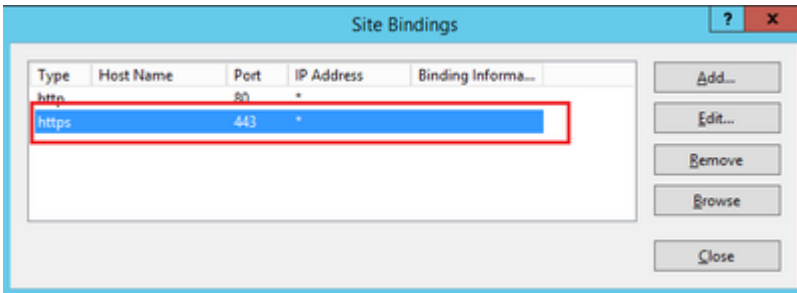
- ððð-ð...ð´ð,ð¹ðš ððš ð·ð±ðšð,ð© ð¹ð±ð¶ ðšð,,ð´ð-ð±ð© (ðšð...ðfð†ðf ð¥ð³ðªððð-ðšð... ð...ð´ð,ð¹ ð´ðšð´ ðšð,,ðšðððªðð¶ðš ð£ð´ ð-ð¹ð,,ð‡ ð£ðfð«ð± ð-ð,ð© ððš ð...ð´ðšð,ð¹ ð...ððð-ð©) ð´ððð-ð´ ð±ð´ðšð´ð· ð...ð† ð-ð²ð; ðšð,,ð¥ð-ð±ðšð;ðšðª. ðšððð-ðšð´ ð±ð,,ðf ð¥ð,,ð% ð¥ð,ð‡ðšð± ð...ðð±ð± ðšð,,ðšð±ðªð´ðšð·ðšðª ðšð,,ð´ðš ðšð³ð...ð ð,,ðf ð´ð¥ð†ð´ðšð; ð±ð´ðšð´ð· ð,,ð...ð´ð,ð¹ ð´ðšð´ ð´ðªðð±ðšð±ð‡ðš ð´ðððð´ðð±ðšð. ðððð´ ð¥ð¶ð¶ðšððð ð,,ð¥ð¶ð¶ðšððð ð±ð´ð· SSL ðšð,,ð-ð´ðšð´ ð¥ð,,ð% ðšð,,ð...ð´ð,ð¹.



- ðšðªð... ðªð¹ðšðšð† ðšð,,ð¥ð¹ð-ðšðð-ðšðª ðšð,,ðšðððªðð¶ðšð© ð,,ð,,ð±ð´ð· ð· ðšð,,ð-ð´ðšð´ ð¹ð,,ð% HTTP ð¹ð,,ð% ðšð,,ð...ð†ðððð° 80. ðððð´ https ððšð,,ð,ðšðð!ð...ð© ðšð,,ð...ð†ð³ðð-ð,ð© ðšð,,ð†ð´ð¹. ðððð´ ðšð,,ð´ð‡ðšðð-ð© ðšð,,ð...ð´ð,ð¹ð© ððððªðšððð ðšð,,ðªðð ð£ð†ð´ð£ðªð±ðšð ððšð,,ð,ð³ð... ðšð,,ð³ððð´ð, ð...ð† ðšð,,ð,ðšðð!ð...ð© ðšð,,ð...ð†ð³ðð-ð,ð© ð´ð‡ðšðð-ð© SSL ððð... ðððð´ OK.



- Ø§Ù,,Ø¸Ù† Ù,,Ø-ÙŠÙ¸ Ø±Ø·Ø· SSL Ø-Ø-ÙŠØ- Ø¹Ù,,Ù% Ù...Ù^Ù,,Ø¹Ù¸Ù Ù-Ù¸Ù,, Ù...Ø§ Ø¹Ø·Ù,,Ù% Ù‡Ù^ Ø§Ù,,Ø¹ØÙ,, Ù...Ù† Ø¸Ù†Ù‡ ÙŠØ¹Ù...Ù,, Ø¹Ù† Ø·Ø±ÙŠÙ,, Ø¹ØØ-ÙŠØ- Ø@ÙŠØ§Ø± Ø¥Ø³Ø¹Ø¹Ø±Ø§Ø¶ *:**443 (https)** Ù...Ù† Ø§Ù,,Ù,,Ø§Ø:Ù...Ø@ Ù¹Ø¹Ø¸Ù¸Ù- Ù...Ù† Ø¸Ù† Ø¶ ØØØ@ Ù^ÙŠØ· Ø§Ù,,Ø§Ù¸Ø¹Ø±Ø§Ø¶ÙŠØ@ Ù,, IIS Ø¹Ø³Ø¹ØØÙ... HTTPS:

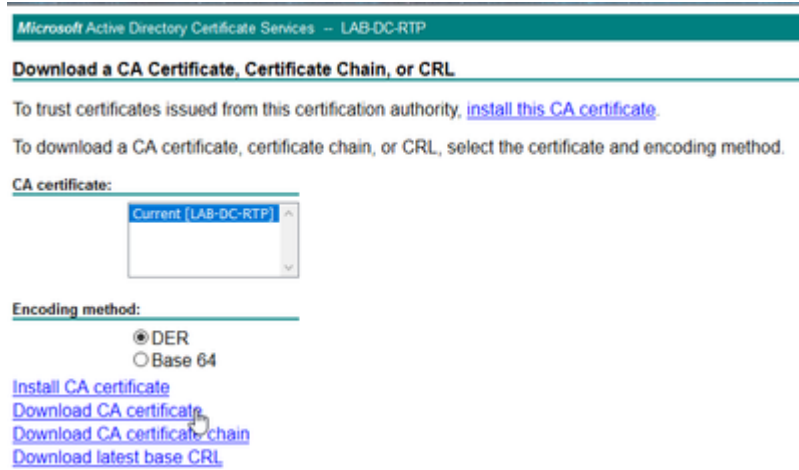


- Ø¹Ø¹Ù¸Ø± Ø¥Ø¹Ø§Ø-Ø@ Ø¹Ø¹ÙŠÙ,, Ø@Ø-Ù...Ø@ IIS Ø¹Ø¹Ø¹ Ø¹Ø¹ÙŠÙŠØ±Ø§Ø¹ Ø§Ù,,Ø¹Ù¸ÙŠÙ†. Ø¸Ø³Ø¹Ø@Ø-Ù... Ø@ÙŠØ§Ø± Ø¥Ø¹Ø§Ø-Ø@ Ø§Ù,,Ø¹Ø¹ÙŠÙ,, Ù...Ù†

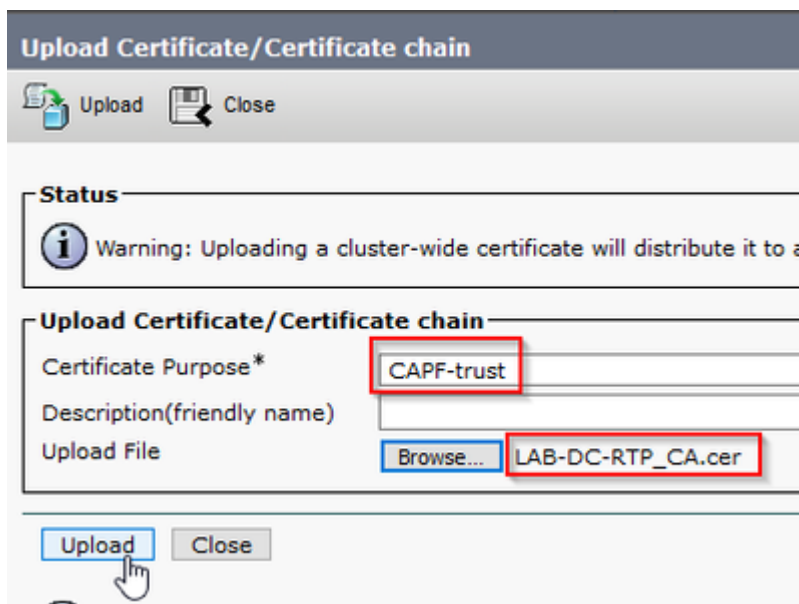
Ø-Ø²Ø; Ø§Ù,,Ø¥Ø-Ø±Ø§Ø;Ø§Øª.

ØªÙfÙ^ÙŠÙ† CUCM

- Ø§Ù†ØªÙ,,Ù,, Ø¥Ù,,Ù% Øµ ØØØ AD CS Ø¹Ù,,Ù% Ø§Ù,,Ù^ÙŠØ´´
(https://YOUR_SERVER_FQDN/certsrv/) Ù^Ù,,Ù... ØªÙ†Ø²ÙŠÙ,, Ø´Ù†Ø§Ø-ØØ CA



- Ø§Ù†ØªÙ,,Ù,, Ø¥Ù,,Ù% Ø§Ù,,Ø£Ù...Ø§Ù† > Ø¥Ø-Ø§Ø±ØØ Ø§Ù,,Ø´Ù†Ø§Ø-Ø§Øª Ù...Ù†
Øµ ØØØ Ø¥Ø-Ø§Ø±ØØ Ù†Ø§Ø§Ù... Ø§Ù,,ØªØ´Ø°ÙŠÙ,, Ù^ØØ-Ø²Ø± ØªØÙ...ÙŠÙ,,
Ø§Ù,,Ø´Ù†Ø§Ø-ØØ/Ø³Ù,,Ø³Ù,,ØØ Ø§Ù,,Ø´Ù†Ø§Ø-Ø§Øª Ù,,ØªØÙ...ÙŠÙ,, Ø´Ù†Ø§Ø-ØØ CA
Ù...Ø¹ ØªØ¹ÙŠÙŠÙ† Ø§Ù,,Ø°Ø±Ø¶ Ø¹Ù,,Ù% CAPF-Trust.



... ÙªÙ†Ø´ Ù†Ø°Ù† Ø§Ù,,Ù†Ù,,Ø-ØØØØ ØªÙfÙ^Ù† Ø£ÙŠØ¶Ø§ Ù ÙfØ±ØØ Ø-ÙŠØ-ØØ
ØªØÙ...ÙŠÙ,, Ù†Ù Ø³ Ø´Ù†Ø§Ø-ØØ CA Ù...Ø«Ù,, CallManager-trust Ù,,Ø£Ù†Ù†Ø§
Ù...Ø-Ù,,ÙªØØ Ù ÙŠ Ø§Ù,,ØØ ØªÙ...ÙfÙŠÙ† ØªØ´Ù ÙŠØ± Ø§Ù,,Ø¥Ø´Ø§Ø±Ø§Øª
Ø§Ù,,ØçÙ...Ù† (Ø£Ù^ ØªÙ...ÙfÙŠÙ†Ù†) Ù,,Ù†Ù,,Ø§Ø· Ø§Ù,,Ù†Ù†Ø§ÙŠØØØØ Ù^Ù†Ù^ Ù...Ø§
ÙŠØªÙ...Ù,, Ø£Ù† ÙŠÙfÙ^Ù† Ø¥Ø°Ø§ ÙfØ§Ù† Ù†Ø§Ø§Ù... Ø§Ù,,Ù...Ø-Ù...ÙªØØ Ù ÙŠ
Ø§Ù,,Ù^Ø¶Ø¹ Ø§Ù,,Ù...ØØØªÙ,,Ø.

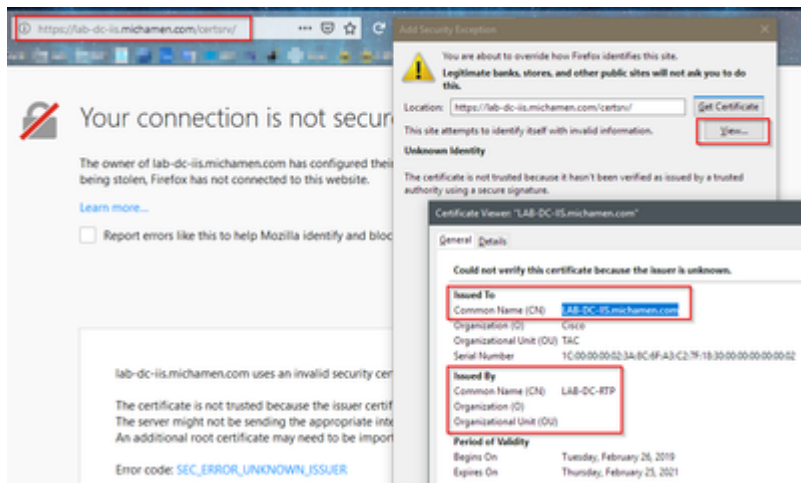
- Ø§Ù†ØªÙ,,Ù,, Ø¥Ù,,Ù% Ø§Ù,,Ù†Ø§Ø§Ù... > Ù...Ø¹Ù,,Ù...Ø§Øª Ø§Ù,,ØØØ-Ù...ØØ. ØØ-Ø´
ØØØ§Ø-Ù... Unified CM Publisher Ù ÙŠ ØÙ,,Ù,, Ø§Ù,,ØØØ§Ø-Ù... Ù^ÙªÙŠÙØØØ

Ø§Ù,,ØªØÙ,,Ù, Ù...Ù† Ø`Ù‡Ø§Ø-Ø§Øª IIS

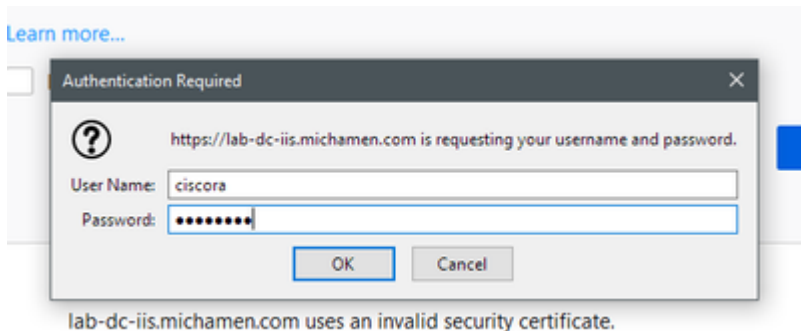
- Ù...Ù† Ù...ØªØµØµ Ø`Ù‡Ø§Ø-Ø§Øª Ù`Ù‡Ø§Ø-Ø§Øª Ø`Ø@ØµÙ‡ Ù,,Ù‡ Ø§ØªØµØ§Ù,, Ø`Ø§Ù,,Ø@Ø§Ø-Ù... (Ù‡Ù`ØµØ¶Ù,, Ù`Ù‡Ø§Ø-Ø§Øª Ø`Ø`Ù`Ø@ Ù†Ø§Ø-Ø± CUCM) Ø§Ù†ØªÙ,,Ù,, Ø¥Ù,,Ù% URL:

https://YOUR_SERVER_FQDN/certsrv/

- Ù‡ØªÙ... Ø¹Ø±Ø¶ ØªÙ†Ø`Ù‡Ù‡ Ø`Ù‡Ø± Ù...Ù`Ø«Ù`Ù, Ø`Ù‡ Ù,,Ù,,Ø`Ù‡Ø§Ø-Ø@. Ø£Ø¶Ù`Ø§Ù,,Ø§Ø³ØªØ«Ù†Ø§Ø; Ù`ØªØÙ,,Ù, Ù...Ù† Ø§Ù,,Ø`Ù‡Ø§Ø-Ø@. ØªØ£Ù`Ø- Ù...Ù† Ù...Ø-Ø§Ø`Ù,ØªÙ‡Ø§ Ù,,Ø`Ø`Ù`Ø@ FQDN Ø§Ù,,Ù...ØªÙ`Ù,Ø¹Ø@:



- Ø`Ø¹Ø- Ù,Ø`Ù`Ù,, Ø§Ù,,Ø§Ø³ØªØ«Ù†Ø§Ø;Ø£ Ù‡Ù,,Ø²Ù...Ù`Ø§Ù,,Ù...ØØ§Ø-Ù,Ø@Ø£ Ù`ØªÙ†Ø- Ù‡Ø`Ù‡ Ø§Ù,,Ù†Ù,Ø-Ø@ Ù‡Ù,,Ø²Ù...Ù`Ø ¥Ø³ØªØ@Ø-Ø§Ù... Ø`Ù‡Ø§Ù†Ø§Øª Ø§Ù,,Ø§Ø¹ØªÙ...Ø§Ø- Ø§Ù,,ØªÙ‡ ØªÙ... ØªÙ`Ù`Ù‡Ù†Ù‡Ø§ Ù,,Ø³Ø§Ø` CiscoRA Ù`Ù‡ Ù`Ù,Øª Ø³Ø§Ø`Ù,;



- Ø`Ø¹Ø- Ø§Ù,,Ù...ØØ§Ø-Ù,Ø@ Ù‡Ø-Ø` Ø£Ù† ØªÙ`Ù`Ù† Ù,Ø§Ø-Ø±Ø§ Ø¹Ù,,Ù% Ø±ØµÙ‡Ø@ ØµØµØ@ Ø§Ù,,ØªØ±ØÙ‡Ø` Ø` AD CS (Ø@Ø-Ù...Ø§Øª Ø`Ù‡Ø§Ø-Ø§Øª Active Directory):

Welcome

Use this Web site to request a certificate for your Web browser, e-mail client, or other program. By using a certificate, you can verify with over the Web, sign and encrypt messages, and, depending upon the type of certificate you request, perform other security tasks.

You can also use this Web site to download a certificate authority (CA) certificate, certificate chain, or certificate revocation list (CRL).

For more information about Active Directory Certificate Services, see [Active Directory Certificate Services Documentation](#).

Select a task:

- [Request a certificate](#)
- [View the status of a pending certificate request](#)
- [Download a CA certificate, certificate chain, or CRL](#)

Ø§Ù,,ØªØÙ,,Ù, Ù...Ù† ØªÙ†Ù^Ù§Ù† CUCM

Ù,Ù... Ø·Ø§Ù,,Ø®Ø·Ù^Ø§Ùª Ø§Ù,,ØªÙ§ ØªªØ·Ø¹Ù†Ø§ Ø¹Ø§Ø-Ø© Ù,,ØªØ«Ø·Ù§Øª Ø¹Ù†Ø§Ø-Ø© LSC Ø¹Ù,,Ù% Ø£ØØ- Ø§Ù,,Ù†Ù^Ø§ÙªÙ.

Ø§Ù,,Ø®Ø·Ù^Ø© 1. Ù ØªØ ØµÙ ØØØ Ø¥Ø-Ø§Ø±Ø© Ø§Ù,,Ù...Ù†Ø§Ù,,Ù...Ø§Øª Ù^Ø§Ù,,Ø£Ø-Ù†Ø²Ø© Ø«Ù... Ø§Ù,,Ù†Ø§ÙªÙ.

Ø§Ù,,Ø®Ø·Ù^Ø© 2. ØØ-Ø- Ø§Ù,,Ø²Ø± Ø·ØØ« Ù,,Ø¹Ø±Ø¶ Ø§Ù,,Ù†Ù^Ø§ÙªÙ.

Ø§Ù,,Ø®Ø·Ù^Ø© 3. ØØ-Ø- Ø§Ù,,Ù†Ø§ÙªÙ Ø§Ù,,Ø°Ù§ ØªØ±Ø°Ø· Ù ØÙ§ ØªØ«Ø·Ù§Øª LSC Ø¹Ù,,Ù§Ù†

Ø§Ù,,Ø®Ø·Ù^Ø© 4. Ø§Ù,,ØªÙ...Ø±Ù§Ø± Ù,,Ø£Ø³Ù ØÙ,, Ø¥Ù,,Ù% Ù...Ø¹Ù,,Ù^Ù...Ø§Øª Ù^Ø,Ù§Ù ØØØ Ù^Ù†Ù§Ù,, Ø§Ù,,Ù...Ø±Ø-Ø¹ Ø§Ù,,Ù...ØµØ-Ù, (CAPF)

Ø§Ù,,Ø®Ø·Ù^Ø© 5. ØØ-Ø- Ø§Ù,,ØªØ«Ø·Ù§Øª/Ø§Ù,,ØªØ±Ù,Ù§Ø© Ù...Ù† Ø¹Ù...Ù,,Ù§Ø© Ø§Ù,,Ø¹Ù†Ø§Ø-Ø©.

Ø§Ù,,Ø®Ø·Ù^Ø© 6. ØØ-Ø- Ù^Ø¶Ø¹ Ø§Ù,,Ù...ØØ§Ø-Ù,Ø©. (ØØ³Ø· Null String Ø-Ù§Ø- Ù,,Ø£Ø°Ø±Ø§Ø¶ Ø§Ù,,Ø§Ø®ØªØ-Ø§Ù±)

Ø§Ù,,Ø®Ø·Ù^Ø© 7. Ù,Ù... Ø·Ø§Ù,,ØªÙ...Ø±Ù§Ø± Ø¥Ù,,Ù% Ø£Ø¹Ù,,Ù% Ø§Ù,,Ø¶ ØØØ Ù^ØØ-Ø- ØÙ ØØ, Ø«Ù... ØªØ·Ø·Ù§Ù, Ø§Ù,,ØªÙ†Ù^Ù§Ù† Ø¹Ù,,Ù% Ø§Ù,,Ù†Ø§ÙªÙ.

Ø§Ù,,Ø®Ø·Ù^Ø© 8. Ø·Ø¹Ø- Ø¥Ø¹Ø§Ø-Ø© ØªØ°ØÙ§Ù,, Ø§Ù,,Ù†Ø§ÙªÙ Ù^Ø¥Ø¹Ø§Ø-Ø© Ø§Ù,,Øª³Ø-Ù§Ù,,Ø£ Ø£Ø³ØªØ®Ø-Ù... Ø¹Ø§Ù...Ù,, ØªØµÙ ØÙ§Ø ØØ§Ù,,Ø© LSC Ù,,ØªØ£Ù†Ù§Ø- ØªØ«Ø·Ù§Øª LSC Ø·Ù†Ø-Ø§Ø.

- Ù...Ù† Ø-Ø§Ù†Ø· Ø®Ø§Ø-Ù... AD Ø§Ù ØªØ MMC Ù^Ù^Ø³Ø¹ Ø§Ù,,Ø£Ø-Ø§Ø© Ø§Ù,,Ø¥Ø¶Ø§Ù ØÙ§Ø Ù,,Ù†Ù§Ø!Ø© Ø§Ù,,Ø§Ø¹ØªÙ...Ø§Ø- Ù,,ØªØØ-Ù§Ø- Ù...Ø-Ù,,Ø- Ø§Ù,,Ø¹Ù†Ø§Ø-Ø§Øª Ø§Ù,,ØµØ§Ø-Ø±Ø©
- Ù§ØªÙ... Ø¹Ø±Ø¶ Ø¥Ø-Ø®Ø§Ù,, Ø§Ù,,Ù†Ø§ÙªÙ Ø-Ø§Ø®Ù,, Ø·Ø±Ù§Ù,Ø© Ø§Ù,,Ø¹Ø±Ø¶ Ø§Ù,,Ù...Ù^Ø-Ø²Ø©Ø£ Ù^Ù†Ø°Ù† Ù†Ù§ Ø·Ø¹Ø¶ Ø§Ù,,ØªÙ Ø§ØµÙ§Ù,, Ø§Ù,,Ù...Ø¹Ø±Ù^Ø¶Ø©:
 - Ù...Ø¹Ø±Ù Ø§Ù,,Ø·Ù,,Ø: Ø±Ù,Ù... Øª³Ù,,Ø³Ù,,Ù§ Ù Ø±Ù§Ø-
 - Ø§Ø³Ù... Ø§Ù,,Ø-Ø§Ù,,Ø: Ù§Ø-Ø· Ø¹Ø±Ø¶ Ø§Ø³Ù... Ø§Ù,,Ù...Ø³ØªØ®Ø-Ù... Ù,,ØØ³Ø§Ø· CiscoRA Ø§Ù,,Ø°Ù§ ØªÙ... ØªÙ†Ù^Ù§Ù†Ù†
 - Ù,Ø§Ù,,Ø- Ø§Ù,,Ø¹Ù†Ø§Ø-Ø©: Ù§Ø-Ø· Ø¹Ø±Ø¶ Ø§Ø³Ù... Ù,Ø§Ù,,Ø· CiscoRA Ø§Ù,,Ø°Ù§ ØªÙ... Ø¥Ù†Ø·Ø§ØªÙ†
 - Ø§Ù,,Ø§Ø³Ù... Ø§Ù,,Ø-Ø§Ø¹Ø¹ Ø§Ù,,Ø°Ù§ ØªÙ... Ø¥ØØ-Ø§Ø±Ù†: Ù§Ø-Ø· Ø¹Ø±Ø¶ Ù†Ù...Ù^ØØ- Ø§Ù,,Ù†Ø§ÙªÙ Ø§Ù,,Ù...Ø±Ù ØÙ, Ø· Ø§Ø³Ù... Ø§Ù,,Ø-Ù†Ø§Ø²

- [Request ID 2: Administrator](#)
- [Request ID 3: LAB-DC-RTPS](#)
- [Request ID 4: ciscora](#)

Request ID	Requester Name	Binary Certificate	Certificate Template	Issued Common Name
2	MICHAMEN1\Administrator	-----BEGIN CERTI...	Web Server (WebSer...	LAB-DC-IIS.michamen....
3	MICHAMEN1\LAB-DC-RTPS	-----BEGIN CERTI...	Domain Controller (...	LAB-DC-RTP.michame...
4	MICHAMEN1\ciscora	-----BEGIN CERTI...	CiscoRA (1.3.6.1.4.1.3...	CP-8865-SEP74A02FC0...

Request ID 4: ciscora

- [Request ID 4: ciscora](#)
- [Request ID 4: ciscora](#)

ةمچرتل هذه لوج

ةللأل تاي نقتل نمة ومة مادختساب دن تسمل اذة Cisco تمةرت
ملاعلاء انء مء مء نء مء دختسمل معد و تمة مء دقتل ةر شبل او
امك ةق قء نوك ت نل ةللأل ةمچرت لصف أن ةظحال مء ءء. ةصاأل مء تءل ب
Cisco ةللخت. فرتمة مچرت مء دق ةل ةل ةل ةل ةل ةل ةل ةل ةل ةل ةل
ىل ةل ةل ةل ةل ةل ةل ةل ةل ةل ةل ةل ةل ةل ةل ةل ةل ةل ةل ةل
(رفوتم طبارل) ةل ةل ةل ةل ةل ةل ةل ةل ةل ةل ةل ةل ةل ةل ةل